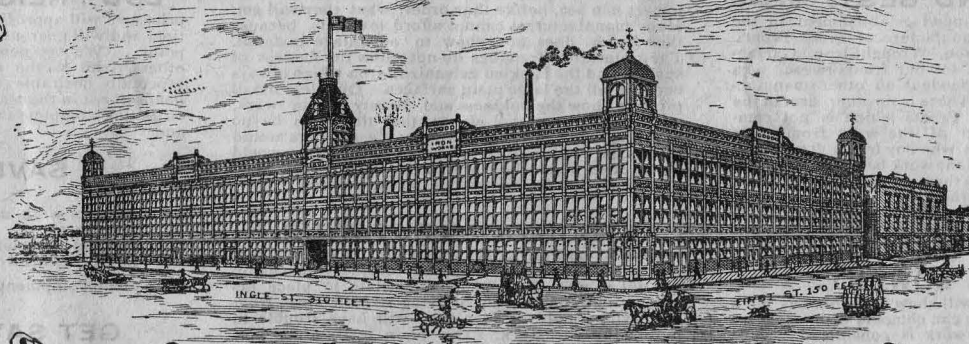


GEO. L. MESKER & CO.

ARCHITECTURAL · IRON · WORKS ·



**· THE LARGEST AND MOST COMPLETE ·
· ESTABLISHMENT IN THE ·
· UNITED STATES ·**

**MODERN
STORE FRONTS,
HANDSOMEST DESIGNS,
LOWEST
PRICES.**

**CAST IRON,
WROUGHT IRON,
GALVANIZED IRON,
WOOD WORK & GLASS
FOR STORE FRONTS.**

EVANSVILLE, IND.

U. S. A.

THE LARGEST AND MOST COMPLETE
ARCHITECTURAL FOUNDRY AND GALVANIZED-IRON WORKS
IN THE UNITED STATES.

GEO. L. MESKER & CO.
EVANSVILLE, IND.

MANUFACTURERS OF

CAST-IRON, WROUGHT-IRON, GALVANIZED-IRON AND WOODWORK FOR STORE FRONTS.

LARGEST AND BEST. We have the largest and best equipped establishment in the United States for the manufacture of Store Fronts. We make all the Cast-Iron, Wrought-Iron, Galvanized-Iron and Wood work for our fronts in our own factories, and are not dependent on other manufacturers for our supplies. There is no other firm in the country furnishing Store Fronts which is not compelled to buy some part of the work from other manufacturers. Persons who buy fronts from us get them from first hands, all the work being made under one supervision, and thus they are sure to get work accurately fitted and harmonious in construction. This cannot be assured by parties furnishing fronts who are compelled to buy some parts of the work from other factories.

PRICES THE LOWEST. A careful comparison of prices will show that there is not a firm in the country which can compete with us when quality and quantity of work is considered. It is simply impossible for them to do it, because we have the finest special machinery in each department, and can turn out the highest grade of work in immense quantities and at the lowest cost.

WE SEND DETAILS. With all estimates, when practicable, we send detail drawings

of the work we propose to furnish, so that our customers can see, before they order, what they will get. Many manufacturers cannot afford to do this, because their work does not show to advantage in detail. Their elevation drawings do not show the flatness of surface and the buckled galvanized-iron which always occur in all the large plain surfaces. Our clear detail pictures show the boldness and beauty of our work, and it can be seen at a glance that there can be no buckling in the galvanized-iron. If customers would always get full details before ordering, they would not so often place their orders for work which must prove unsatisfactory when put on the building.

ANYBODY CAN PUT IT UP. Our work is so carefully and systematically constructed, measured and marked that any ordinary mechanic can put it up. No one need hesitate to place his order with us on account of living at a distance from Evansville, and for fear they will have trouble in putting up the work. Our plain instructions and details render it impossible to put it up wrong. Notice our claim that the cost of putting up our work will not exceed one-half the cost of putting up the work of other manufacturers. *Don't forget this when you compare prices!* We have sold fronts North, South, East and West, and our customers are always gratified at the ease with which they are able to put up our work

LOW FREIGHT RATES. In quoting prices we will approximate cost of freight to destination, and will guarantee to equalize freights with any point. We compete with home factories and all others, and as the quality of our work makes it especially desirable, and our designs the latest and handsomest in the market, our customers can depend on getting complete satisfaction. Send us your order and

SAVE MONEY!

GET superior work, made and finished up by special machinery;
GET full and complete details and instructions for putting up the work;
GET prompt shipments and accurate measurements.

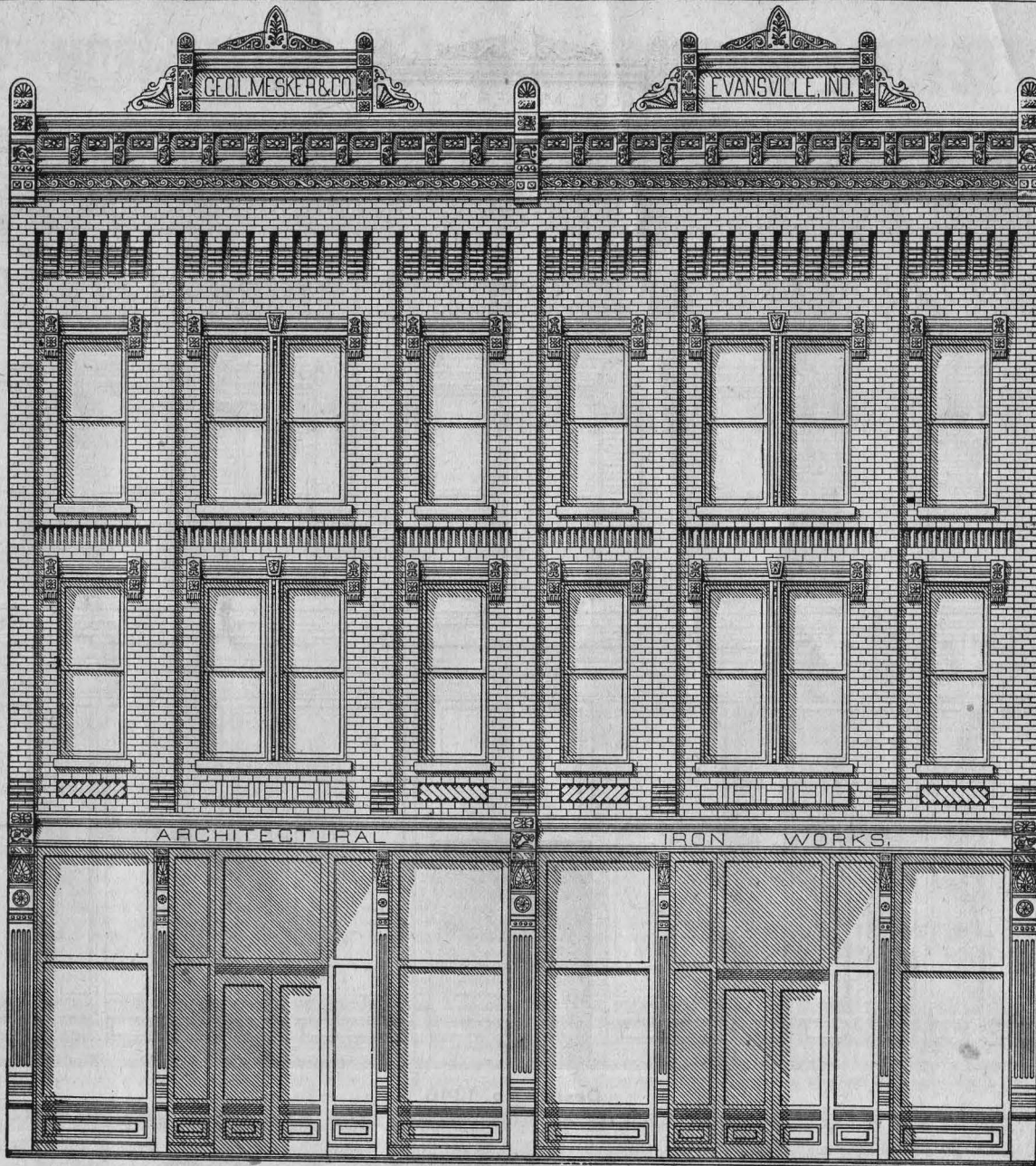
GET SATISFACTION!

Write us for prices and give accurate measurements of proposed building, and state which of our designs you prefer, and we will give you close figures. If the first story of one design and the second story of another is desired, they can be so arranged, and we will quote prices on work desired.

In order to put our prices down to the lowest possible point, we have reduced our margin of profit to a small per cent, and cannot afford to take risks on parties who have no commercial rating. We will therefore expect from every customer who is not well rated, a letter of credit from his banker or a merchant in high standing, or he may send a draft for one-half the amount of purchase, the balance to be paid after goods are shipped, by draft attached to bill of lading. The latter method will insure prompt shipment of all orders without further reference.

BE CAREFUL WITH MEASUREMENTS, AND ADDRESS ALL LETTERS PLAINLY TO

GEO. L. MESKER & CO.,
EVANSVILLE, IND.



Design No. 1345.

A three-story brick front, with cast-iron columns, sills and lintels, and galvanized-iron lintel cornice, window caps, main cornice and pediments. Price of cast-iron and galvanized-iron work for 35 ft. front, \$379.10; 38 ft., \$392.80; 41 ft., \$406.50. Wood work and glass extra. Prices quoted on application

WRITE FOR DISCOUNTS.



Design No. 1346.

A two-story brick front, with cast-iron columns, sills and lintels, and galvanized-iron lintel cornice, main cornice, window caps and pediment. An excellent front for a public hall or office building in connection with stores. It can be furnished for any width of building, and also for three or more stories high when required. Price of cast-iron and galvanized-iron work for 40 ft. front, \$357.50; 43 ft., \$370.25; 46 ft., \$383.00; 49 ft., \$395.75. Wood work and glass extra. We will quote prices on wood work and glass for the front on application.

WRITE FOR DISCOUNTS.

WRITE FOR DISCOUNTS



Design No. 1347.

A two-story brick front, with cast-iron columns, sills and lintels, and galvanized-iron lintel cornice, window caps, main cornice and pediments. Price of cast-iron and galvanized-iron work for 40 ft. front, \$326.90; 45 ft., \$345.65; 50 ft., \$364.40. This design can be used for a front of any width or height. We will, on application, quote prices on work and glass, which are extra.

WRITE FOR DISCOUNTS.



Design No. 1348.

A two-story brick front, with brick side and division columns, and cast-iron intermediate columns, sills and lintels, and galvanized-iron lintel cornice, window caps, main cornice and pediments. Price of cast-iron and galvanized-iron work for 36 ft. front, \$238.00; 39 ft., \$248.00; 42 ft., \$258.00. Wood work and glass extra. Prices quoted on application.

WRITE FOR DISCOUNTS.

Parties who are going to build would do well to get our complete catalogue and discounts. Give us the dimensions of your proposed building and we will quote low prices on any design preferred.



Design No. 1349.

A two-story brick front, with cast-iron sills, lintels and columns, and galvanized-iron lintel cornice, window caps, main cornice and pediment, and cast-iron cresting over main cornice. This makes a very handsome front. Price of cast-iron and galvanized-iron work for 40 ft. front, \$355.65; 45 ft., \$376.30; 48 ft., \$380.05. Wood work and glass extra. Prices quoted on application.

We have a great many unsolicited testimonials from parties who have bought our fronts, and all express themselves highly pleased with the style and quality of our work.

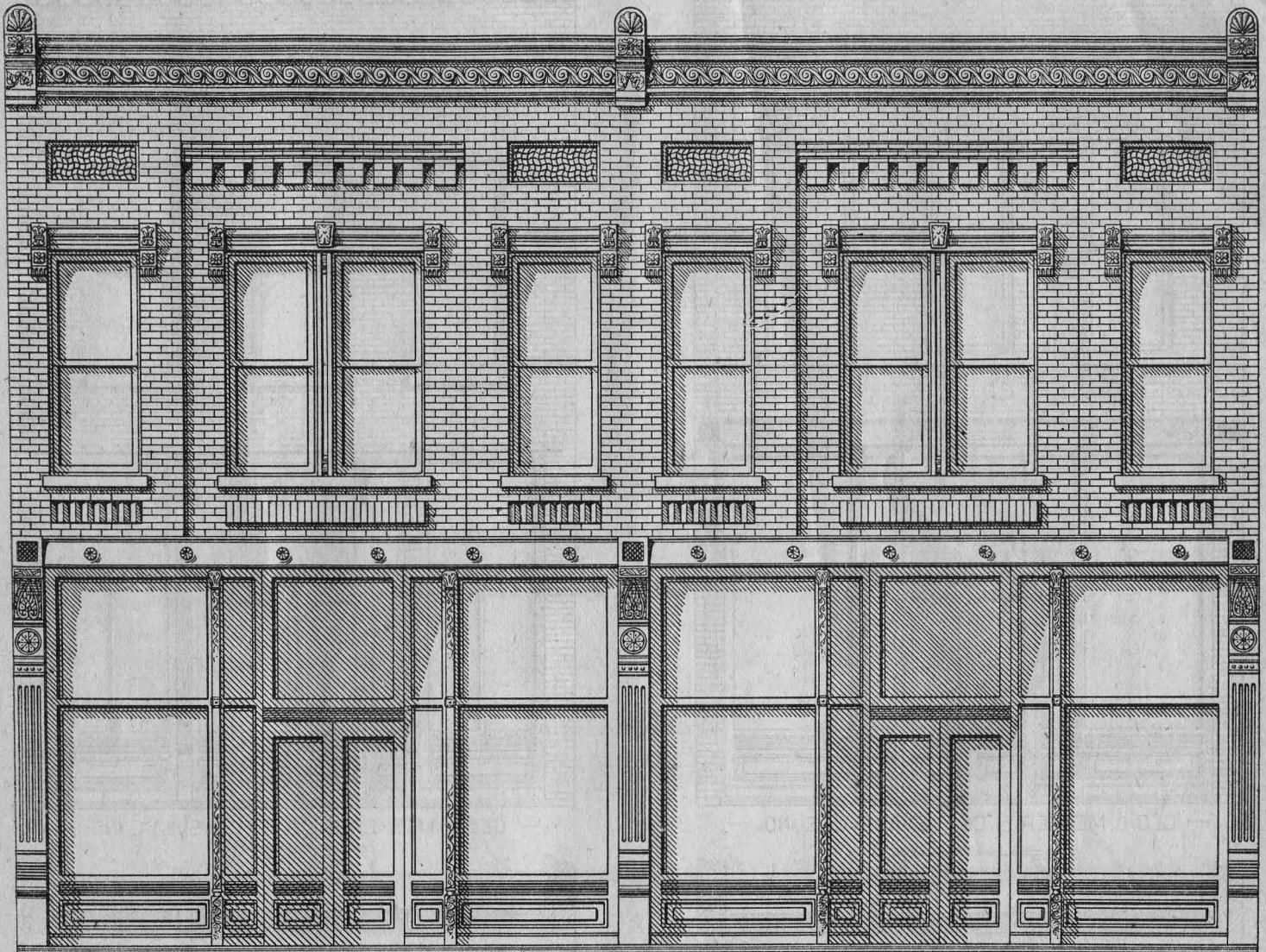
WRITE FOR DISCOUNTS.



Design No. 1350.

This is an excellent design for a large single storeroom. It represents a two-story brick building, with cast-iron sills, lintels and columns and galvanized-iron lintel cornice, window caps, main cornice and pediment. Price of cast-iron and galvanized-iron work for 35 ft. front, \$297.50; 38 ft., \$310.25; 41 ft., \$323.00. We will quote extra price for wood work and glass on application.

WRITE FOR DISCOUNTS.

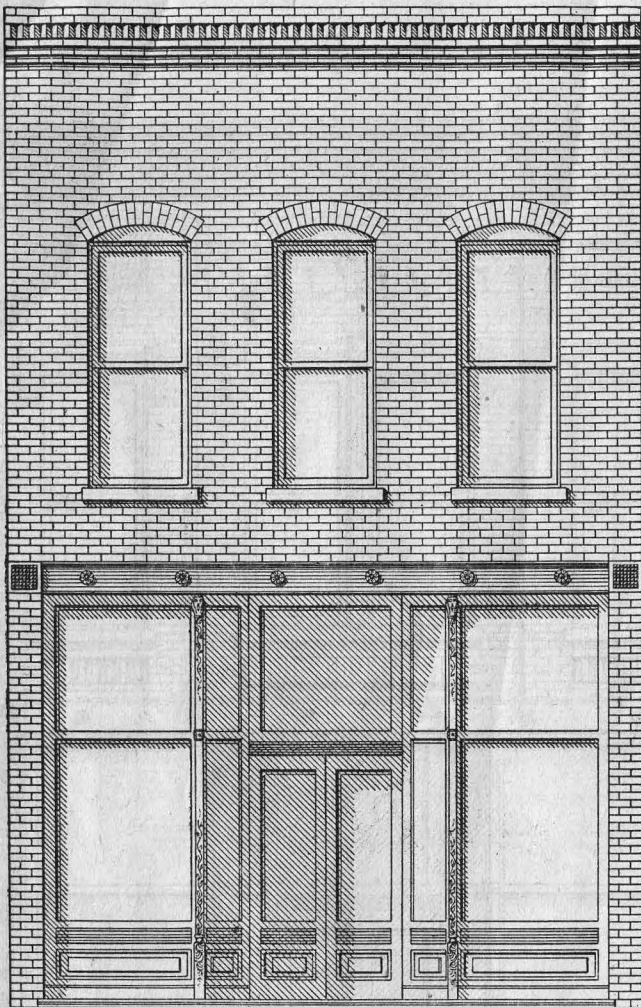


GEO. L. MESKER & CO. ARCHITECTURAL IRON WORKS EVANSVILLE, IND.

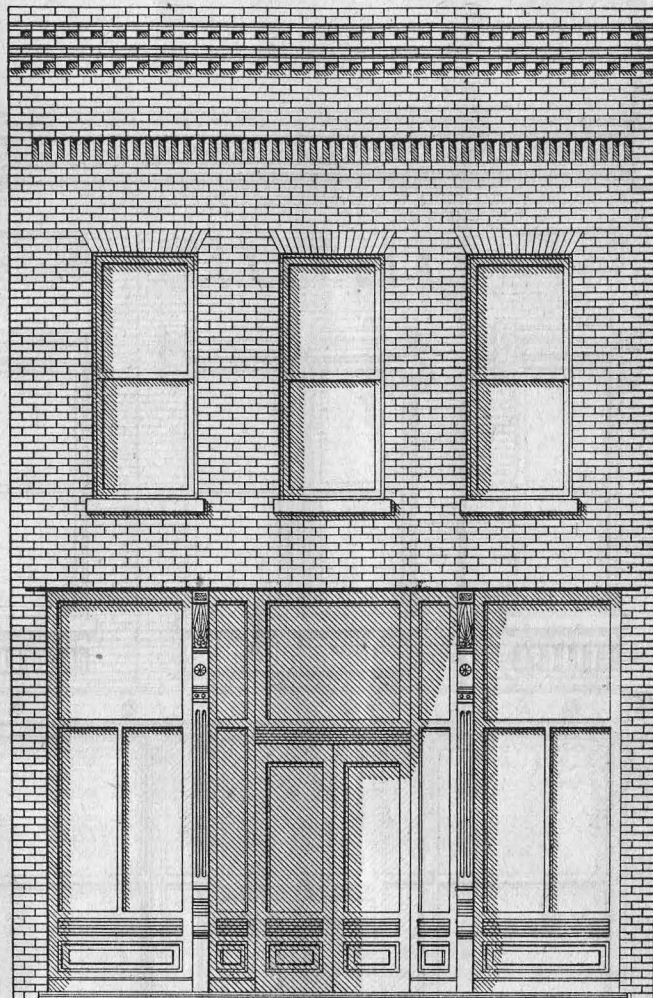
Design No. 1351.

A two-story brick front, with cast-iron sill course and cast-iron columns facing the side and division walls. The front brick wall is carried by steel beam girders, and the corners of first-story recesses are finished with our new and handsome cast-iron sash columns. The second story is finished with galvanized-iron window caps and main cornice and air grates over the single windows. Price of cast-iron work, steel beams and galvanized-iron work for 40 ft. front, \$304.40. We will quote price for building of any width on application. Wood work and glass are extra, but we can furnish them and will give prices when desired.

WRITE FOR DISCOUNTS.



— GEO. L. MESKER & CO. EVANSVILLE IND. —



— GEO. L. MESKER & CO. EVANSVILLE IND. —

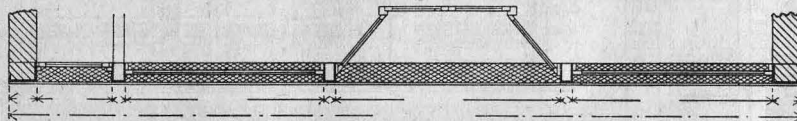
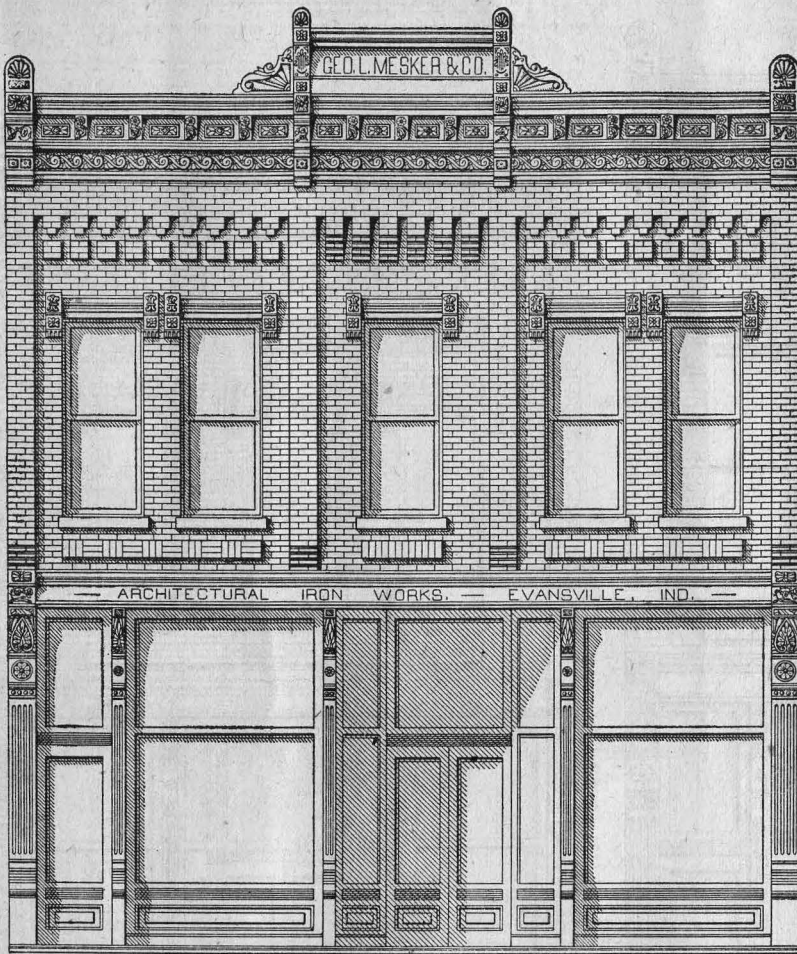
Design No. 1352.

A two-story brick front, with cast-iron sill course and sash columns. Front wall supported by a pair of steel beams. No galvanized-iron work. Price of cast-iron work and steel beams for 20 ft. front, \$93.75. Prices quoted for any width of building. Wood work and glass extra.

Design No. 1353

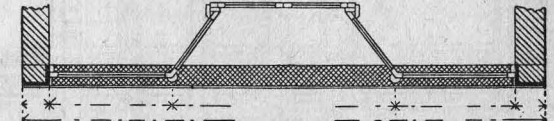
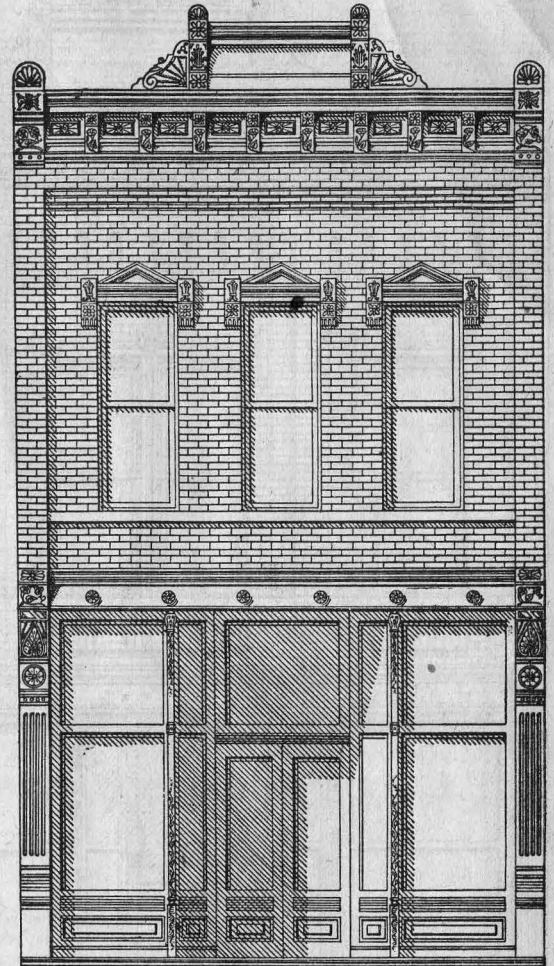
A two-story brick front, with cast-iron columns, sills and lintels. No galvanized-iron work. Price of cast-iron work for 18 ft. front, \$71.25; 20 ft., \$75.00; 22 ft., \$78.75; 24 ft., \$82.50. Wood work and glass extra. Prices quoted on application.

WRITE FOR DISCOUNTS.



Design No. 1354.

A two-story brick front, with cast-iron columns, sills and lintels, and galvanized-iron lintel cornice, window caps, main cornice and pediment. Price of cast-iron and galvanized-iron work for 22 ft. front, \$201.25; 25 ft., \$212.50; 28 ft., \$223.75. Wood work and glass extra.

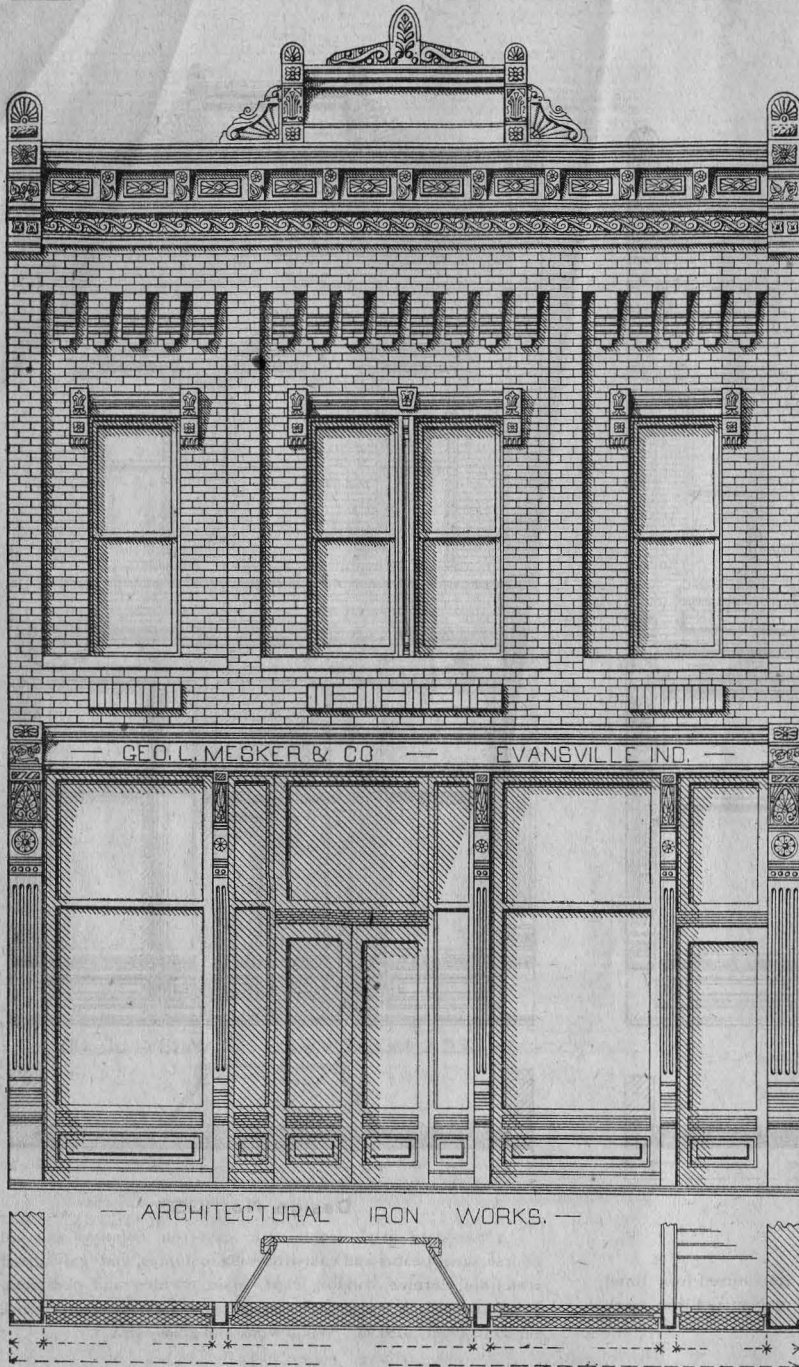


Design No. 1355.

A two-story brick front, with cast-iron columns and sill course, steel beams and cast-iron sash columns, and galvanized iron lintel cornice, window caps, main cornice and pediment. Price of cast-iron work, steel beams and galvanized-iron work for 20 ft. front, \$183.45. Wood work and glass extra.

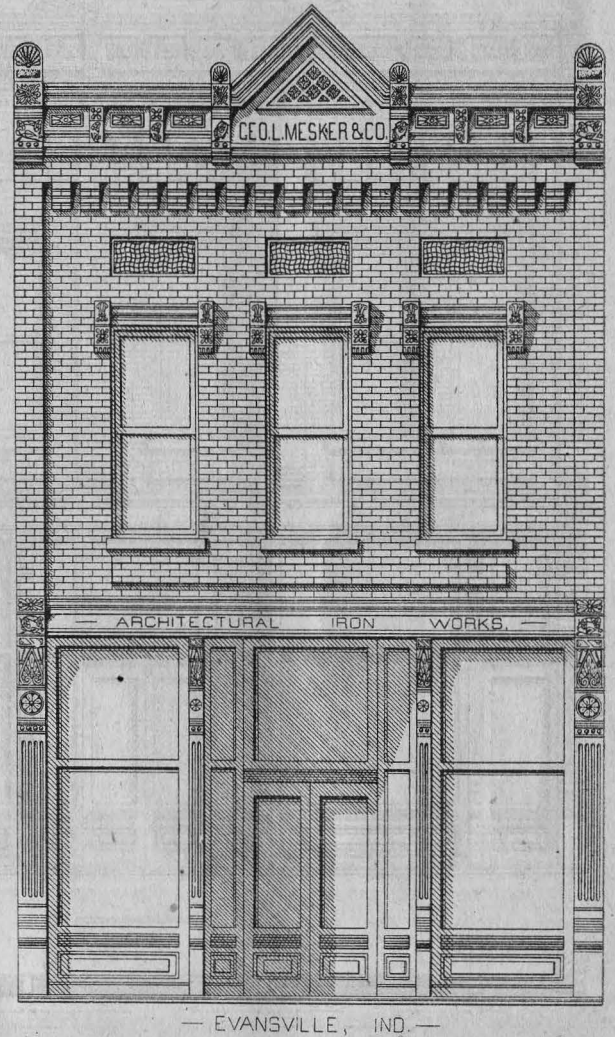
WRITE FOR DISCOUNTS.

If you are going to build, send us dimensions of your building and we will send our complete catalogue and net prices



Design No. 1356.

A two-story brick front, with cast-iron sills, lintels and columns, and galvanized-iron lintel cornice, window caps, main cornice and pediments. Price of cast-iron and galvanized-iron work for 23 ft. front, \$201.90; 26 ft., \$213.15; 29 ft., \$224.40. Wood work and glass extra. Prices quoted on application.



Design No. 1357.

A two-story brick front, with cast-iron sills, lintels and columns, and galvanized-iron lintel cornice, window caps, main cornice and pediment. Price of cast-iron and galvanized-iron work for 20 ft. front, \$172.20; 22 ft., \$180.10; 24 ft., \$188.00; 26 ft., \$195.90. Wood work and glass extra. Prices quoted on application.

WRITE FOR DISCOUNTS.



Design No. 1358.

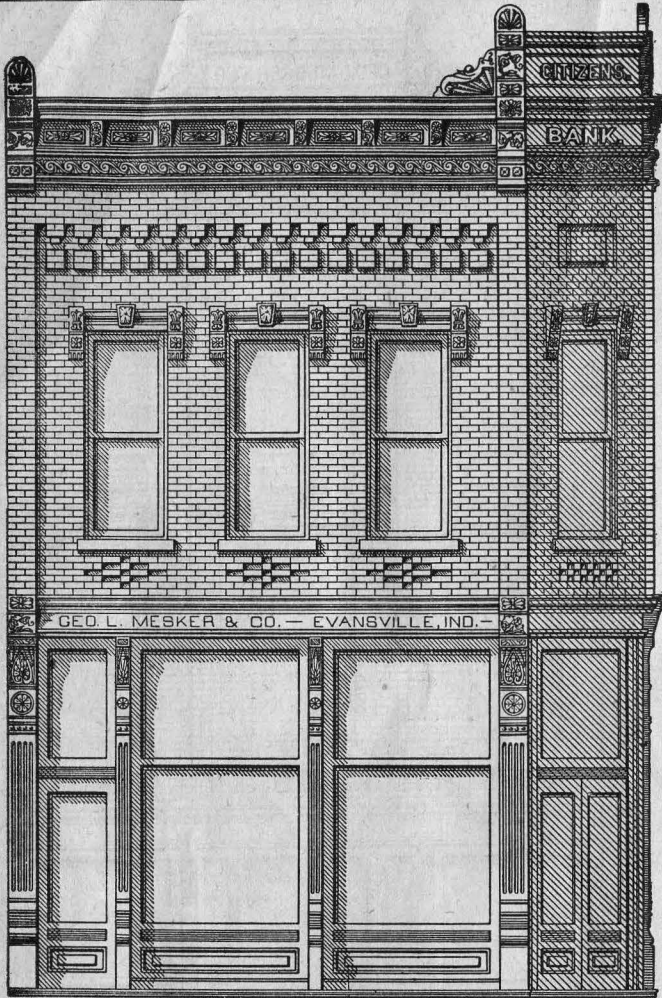
A two-story brick front, with cast-iron columns, sills and lintels, and galvanized-iron lintel cornice, window caps, main cornice and pediment. Price of cast-iron and galvanized-iron work for 23 ft. front, \$187.50; 25 ft., \$195.40; 27 ft., \$203.30; 29 ft., \$211.20. Wood work and glass extra. Price quoted on application.



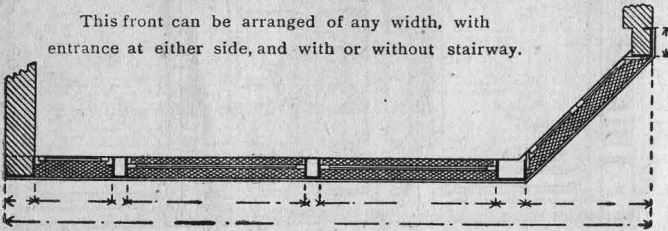
Design No. 1359.

A 2 1/2 story brick front, with cast-iron columns, sills and lintels and galvanized-iron lintel cornice, window caps, main cornice and pediment. Price of cast-iron and galvanized-iron work for 20 ft. front, \$190.00; 24 ft., \$207.00; 25 ft., \$211.25. Wood work and glass extra. We will quote prices on application.

WRITE FOR DISCOUNTS.

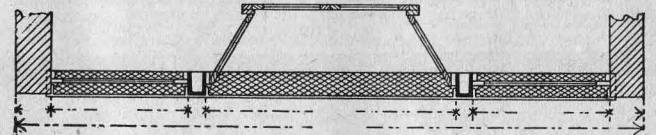
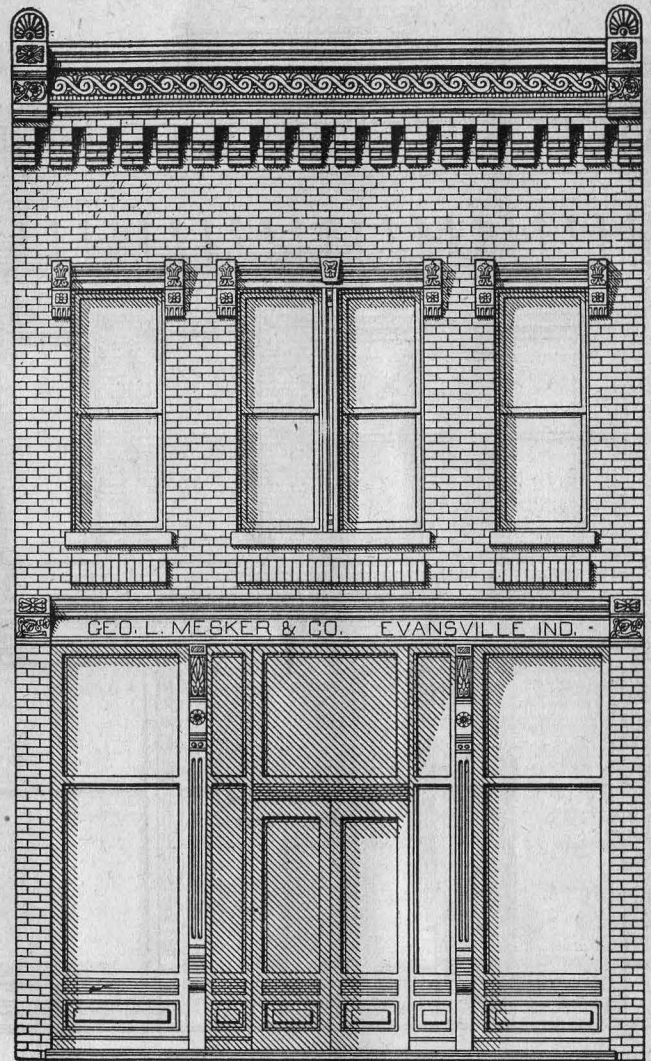


This front can be arranged of any width, with entrance at either side, and with or without stairway.



Design No. 1360.

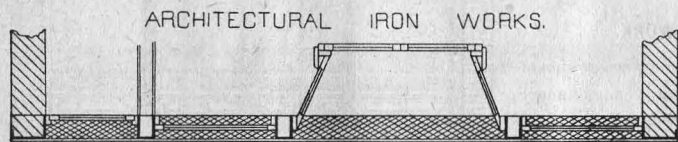
A two-story brick front, with cut-off corner, cast-iron sills, lintels and columns, and galvanized-iron lintel cornice, window caps, main cornice and pediment. Price of cast-iron and galvanized-iron work for 20 ft. width of building, \$208.75; 22 ft., \$216.25; 24 ft., \$223.75. Wood work and glass extra.



Design No. 1361.

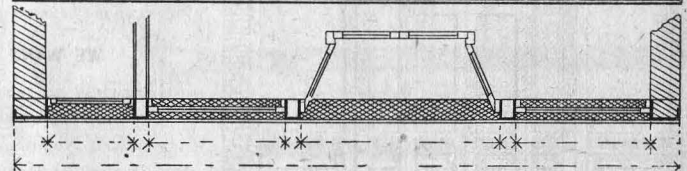
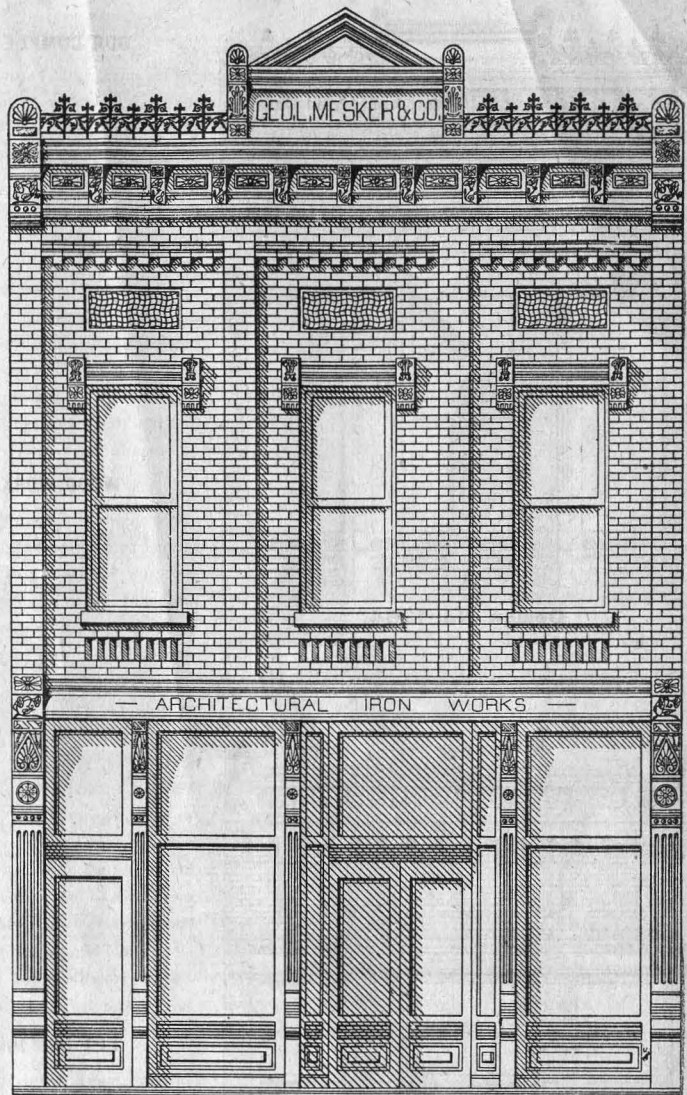
A two-story brick front, with brick side columns, cast-iron supporting columns, sills and lintels, and galvanized-iron lintel cornice, window caps and main cornice. Price of cast-iron and galvanized-iron work for 19 ft. front, \$108.10; 21 ft., \$114.50; 23 ft., \$120.90. Wood work and glass extra.

WRITE FOR DISCOUNTS.



Design No. 1362.

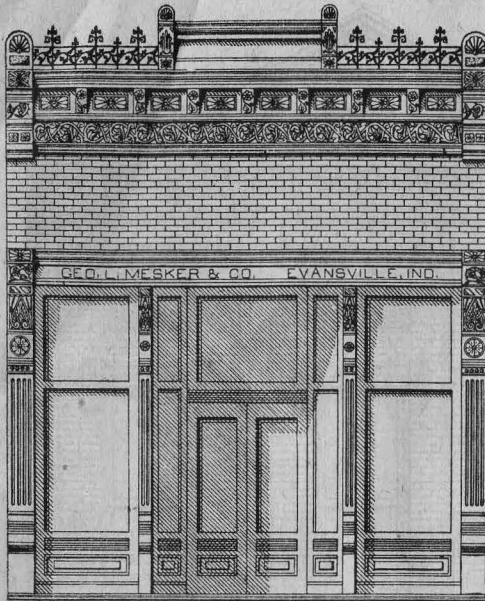
A two-story brick front, with cast-iron columns, sills and lintels, and galvanized-iron lintel cornice, bay window, window caps, main cornice and pediment. Price of cast-iron and galvanized-iron work for 23 ft. front, \$213.95; 24 ft., \$217.15; 25 ft., \$220.35. Wood work and glass extra. Prices quoted on application.



Design No. 1363.

A two-story brick front, with cast-iron columns, sills and lintels, and galvanized-iron lintel cornice, window caps, main cornice and pediment, and cast-iron cresting. Price of cast-iron and galvanized-iron work for 22 ft. front, \$209.45; 24 ft., \$217.35; 26 ft., \$225.25. Wood work and glass extra.

WRITE FOR DISCOUNTS.

**Design No. 1364.**

A one-story brick front, with cast-iron columns, sills and lintels, and galvanized-iron lintel cornice, main cornice and pediment with cast-iron cresting. Price of cast-iron and galvanized-iron work for 18 ft. front, \$135.65; 20 ft., \$142.50; 22 ft., \$149.35; 24 ft., \$156.20. Wood work and glass extra.

OUR COMPLETE CATALOGUE.

This catalogue is not large enough to show all the designs of store fronts that we publish, and we have therefore issued a larger and more complete edition, which we will be pleased to send to parties who contemplate building, if they can not find a design to suit them in this edition. Send us full particulars of your proposed building, stating width of front outside the walls, the height of stories, and which design in this catalogue comes nearest to suiting you, and we will send the general catalogue and quote best net figures on cast-iron and galvanized-iron work, and also on wood work and glass. We are able to please every taste and will make prices that can not be underbid by any firm in the country.

WOOD WORK AND GLASS.

We have a well equipped factory for the manufacture of wood work for store fronts, and as we carry a very large stock of material and buy our lumber at lowest figures during the dull season, we are prepared to quote very low prices. We use good white pine lumber, and furnish all work properly fitted, so that it is very easily placed in position. We can furnish either plate or double strength glass for the show windows, plate of course being more expensive than double strength. We also furnish window frames, sash and glass for second-story front windows. In writing for prices on wood work and glass give height of story and height of columns, and state also whether the doors are to be recessed or straight and state whether plate or double strength glass is wanted in the show windows. If wanted for an old front send a rough ground plan with measurements showing the present arrangement of openings.

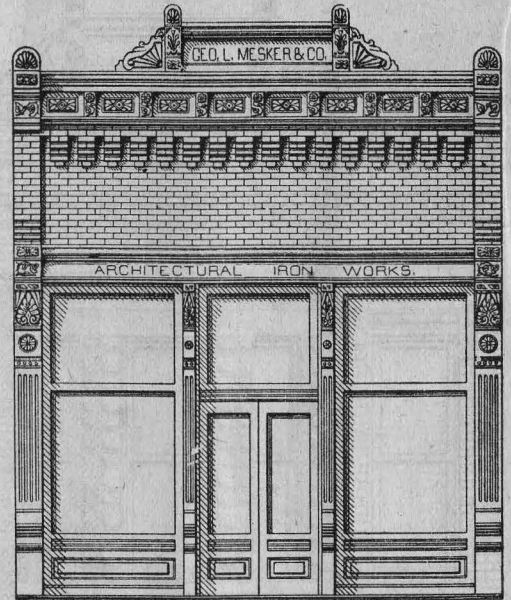
LET US FIGURE WITH YOU

On your work. Our work is the best and our prices can not be beaten.

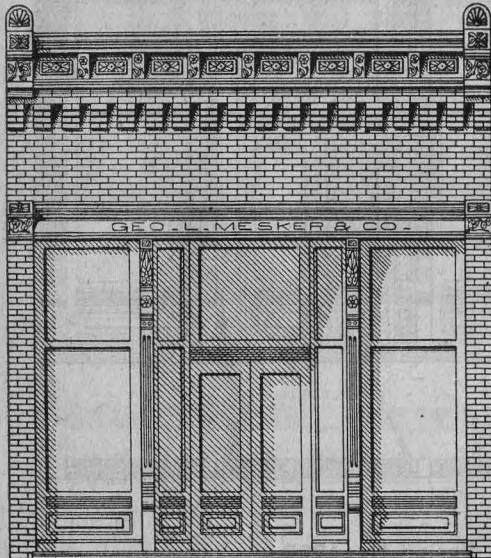
WE WANT YOUR WORK.

Write us fully in regard to your requirements and give us an opportunity to quote you net figures on the work. No firm in the country can underbid us on an equal quantity and quality of material. Hundreds of our customers have given us voluntary testimonials to the satisfaction we have given them both in prices and material. Give us a chance to please you as we have pleased others.

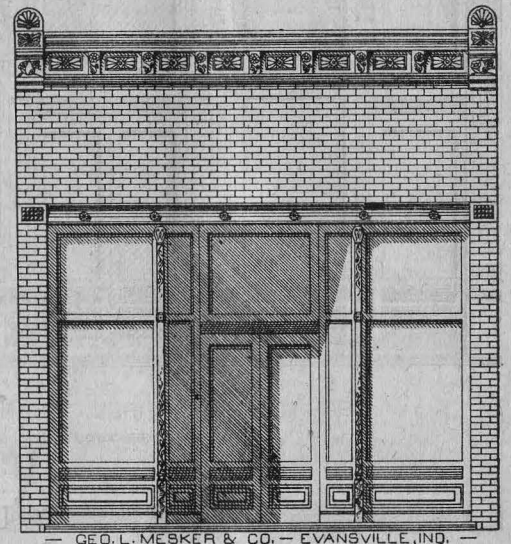
WRITE FOR DISCOUNTS.

**Design No. 1366.**

A one-story brick front, with cast-iron columns, sills and lintels, and galvanized-iron lintel cornice, main cornice and pediment. Price of cast-iron and galvanized-iron work for 19 ft. front, \$125.75; 21 ft., \$131.75; 23 ft., \$137.75; 25 ft., \$143.75. Wood work and glass extra.

**Design No. 1365.**

A one-story brick front, with brick side columns, cast-iron supporting columns, sills and lintels and galvanized-iron lintel cornice and main cornice. Price of cast-iron and galvanized-iron work for 16 ft. front, \$79.25; 19 ft., \$83.25; 22 ft., \$97.25. Wood work and glass extra.

**Design No. 1367.**

A one-story brick front, with cast-iron sill course and sash columns, steel beam girder to support brick work and galvanized-iron cornice. Price of cast-iron, galvanized-iron work and steel beams for 20 ft. front, \$91.00. Other widths quoted on application. Wood work and glass extra.

IN WRITING FOR PRICES

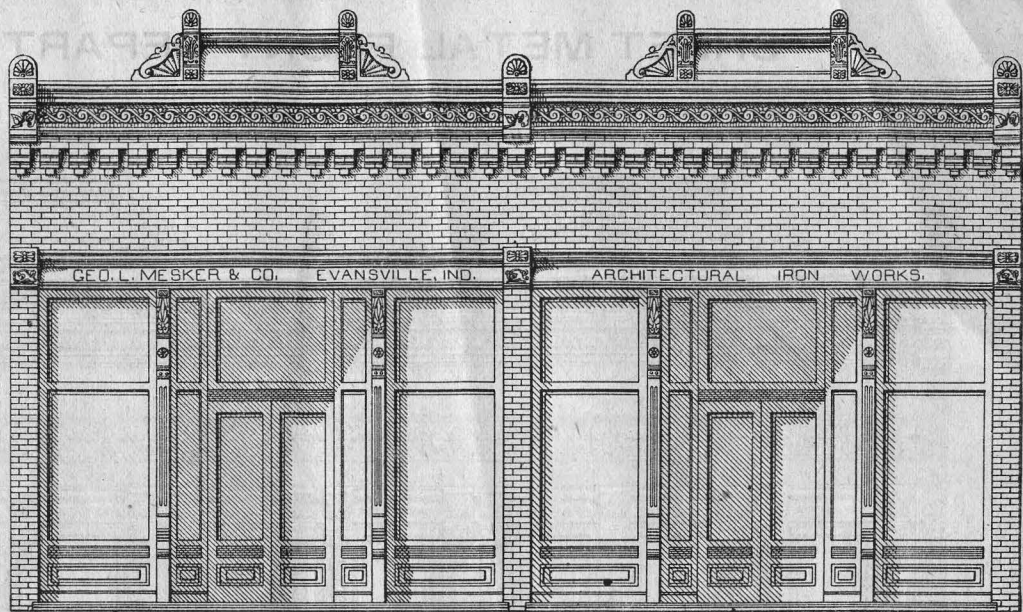
Don't fail to send complete dimensions of building, giving width of front outside the walls, and the height of stories. State whether the building is brick or frame, and whether it is to be one or two stories high, and state also which design in the catalogue is preferred. This will enable us to give our best figures promptly. When we fully understand the conditions, we will guarantee that no firm in the country can quote lower prices. We always quote first-class material, but when parties prefer cheap substitutes such as are furnished by many firms, we can accommodate them and will figure accordingly.

IF YOU ARE GOING TO BUILD

Send for our complete catalogue of store fronts and get our discounts or special net figures on your work.

Design No. 1368.

A one-story brick front, with brick side columns and cast-iron sills, lintels and supporting columns, and galvanized-iron lintel cornice, main cornice and pediments. Price of cast-iron and galvanized-iron work for 36 ft. front, \$178.50; 39 ft., \$187.15; 42 ft., \$195.80, 45 ft., \$204.45. Wood work and glass extra.



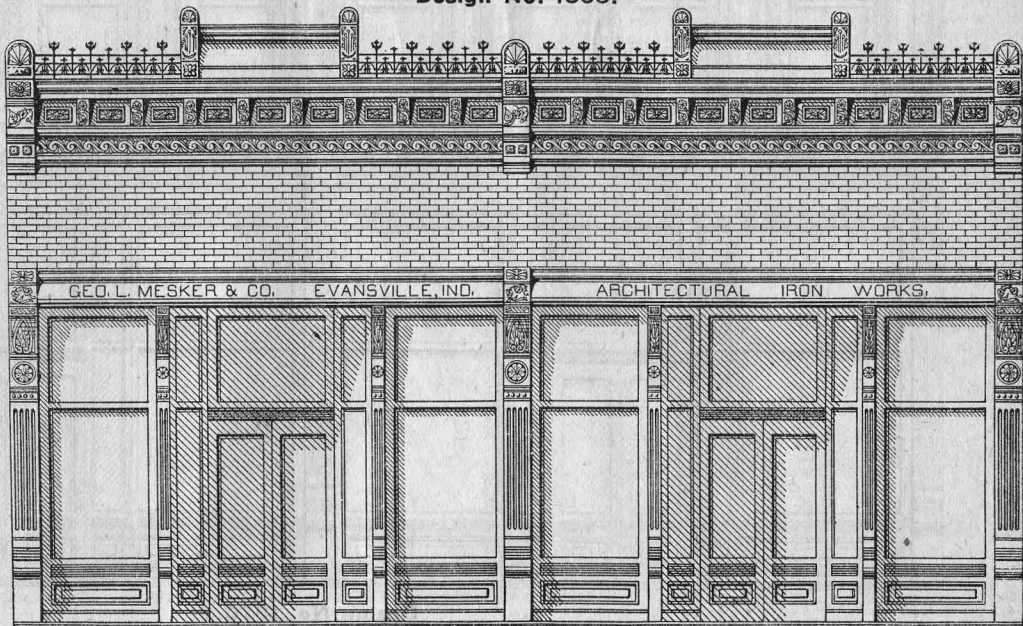
Design No. 1368.

PROMPT DELIVERIES.

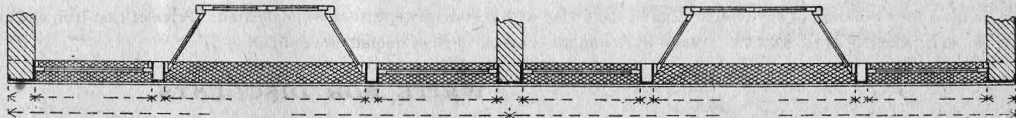
We make a specialty of shipping work quickly. We carry a large stock of columns, sills, lintels and steel beams, as well as a complete line of galvanized-iron cornices, and are prepared to fill most orders at short notice. If you are in a hurry and think you haven't time to wait for an iron front, write us in regard to the matter and give us all necessary dimensions, etc., as per directions above given, and see how quick we can fill your order. Nothing pleases us better than to see our work going out on hurried orders, and we take especial pains to accommodate all those who have but little time to wait. No matter how great your haste may be. Give us a trial and get a good front for your store.

Design No. 1369.

A one-story brick front, with cast-iron sills, lintels and columns, galvanized-iron lintel cornice, main cornice and pediments and cast iron cresting. Price of cast-iron and galvanized-iron work for 35 ft. front, \$253.45; 38 ft., \$263.80; 41 ft., \$274.15. Wood work and glass extra.



Design No. 1369.



WRITE FOR DISCOUNTS.

SHEET METAL FRONT DEPARTMENT.

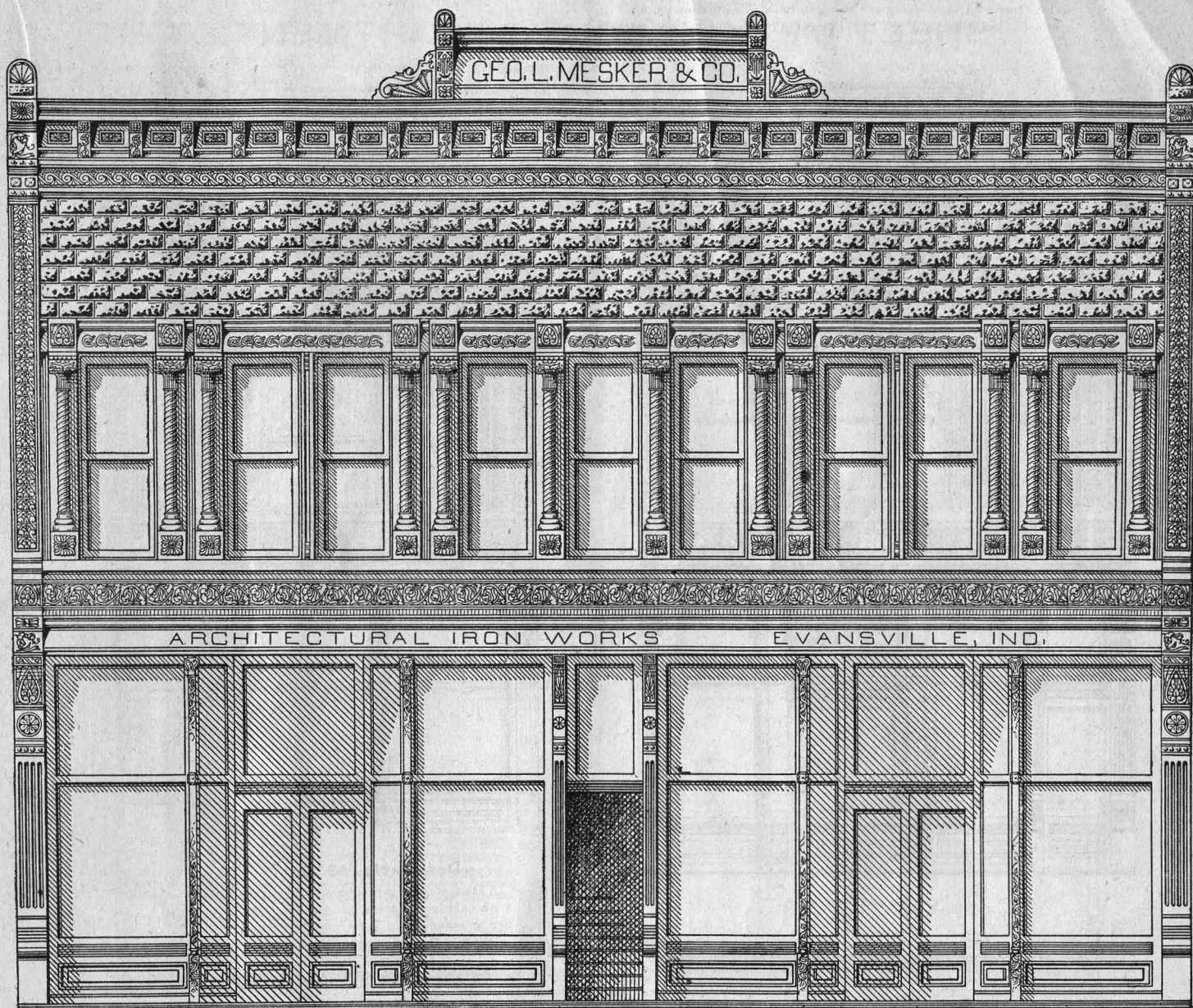
All the designs from pages 18 to 25, inclusive, have iron columns and sills in first story and complete galvanized-steel fronts above, and they can be used for either frame or brick buildings. It will be seen that they are superior in beauty and attractiveness to any other sheet metal fronts in the market.



Design No. 1370.

A double two-story galvanized-steel front, with cast-iron sill course and columns in first story, and our new cast-iron sash columns at corners of recesses. This design can be used for a building of any width. Can be used also with a stairway entrance when desired. Price of cast-iron and galvanized-steel front, 38 ft. wide, \$300.00; 40 ft., \$311.25; 42 ft., \$322.50; 44 ft., \$333.75. Wood work and glass extra. Prices quoted on application.

WRITE FOR DISCOUNTS.

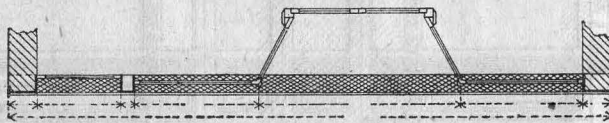
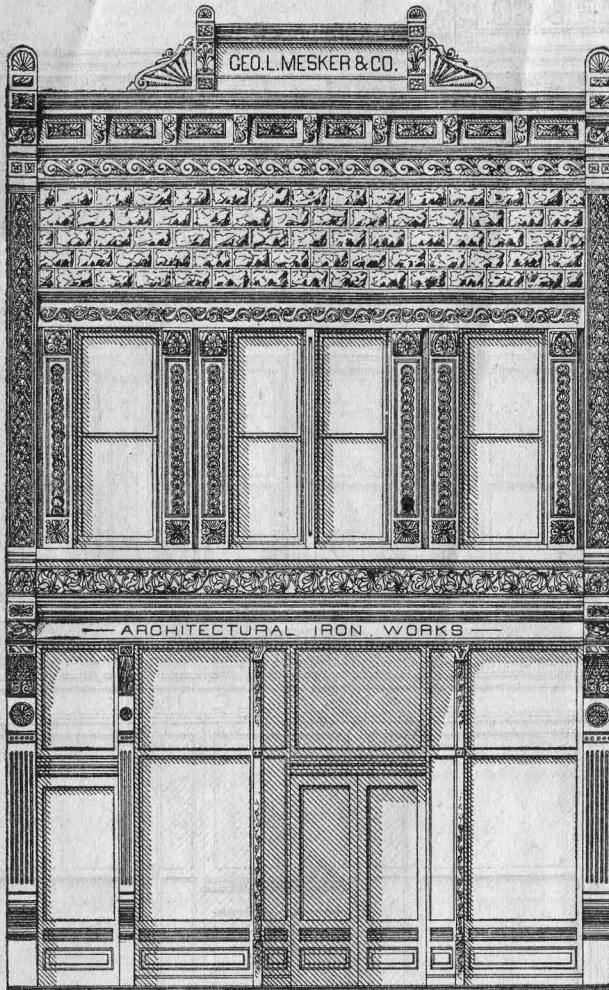


Design No. 1371.

A double two-story galvanized-steel front, with cast-iron sill course and columns in first story, including the new and handsome cast-iron sash columns at the corners of recesses. This design can be arranged to suit any building, and can be used with or without the stairway. Price of cast-iron and galvanized-steel front 40 ft. wide, \$325.00; 43 ft., \$341.90; 46 ft., \$358.80; 49 ft., \$375.70. Wood work and glass not included. Prices quoted on application.

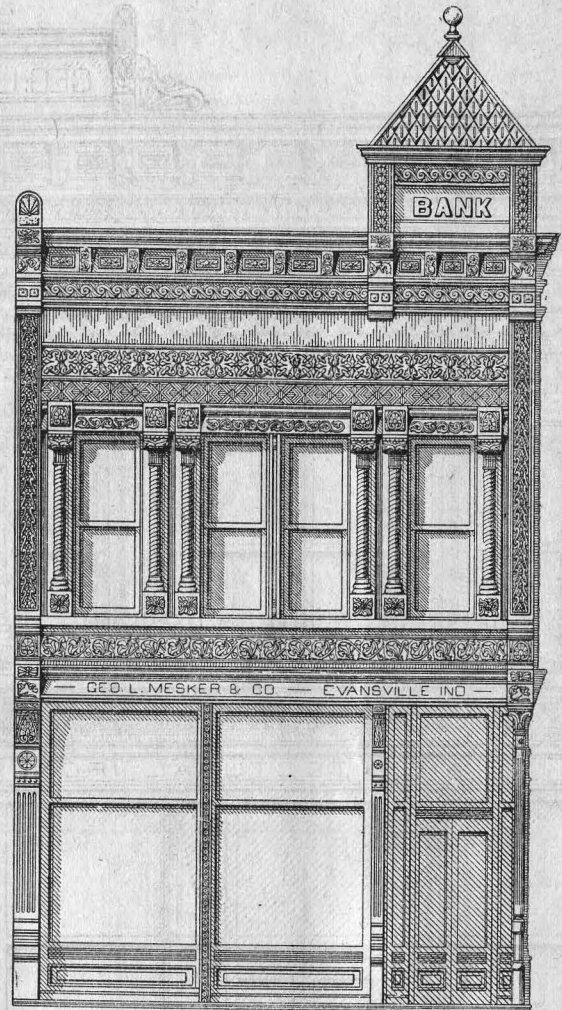
WRITE FOR DISCOUNTS.

We want to figure with you if you are going to build. Send dimensions of your proposed building and get our complete catalogue and bottom figures.



Design No. 1372.

A two-story front, with cast-iron columns and sills, and cast-iron ornamented sash columns at corners in recess. Galvanized-iron front complete in second story. Makes a handsome building. Price of cast-iron and galvanized-iron work for 22 ft. front, \$182.50; 25 ft., \$198.45; 28 ft., \$214.40. Wood work and glass extra. Prices quoted on application.



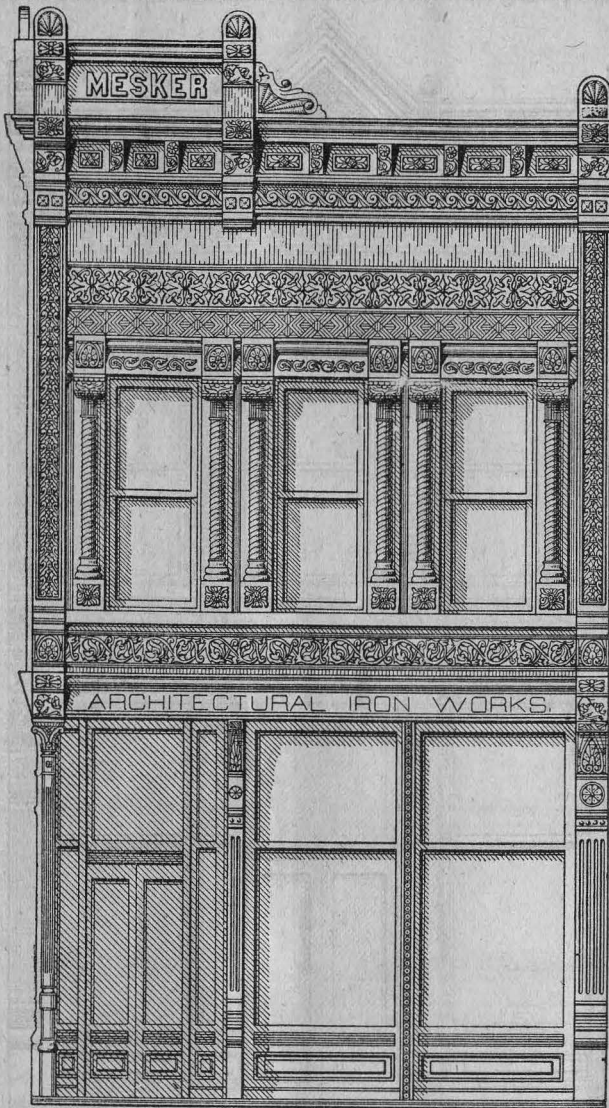
Design No. 1373.

A two-story galvanized-iron front, with cast-iron columns and sills. Corner entrance and large double show window. This makes an elegant front.

Price of cast-iron and galvanized-iron work for 20 ft. front and 7 ft. return, \$240.65. This front can be made for a building of any width, and the corner entrance may be made large or small, as desired. Wood work and glass are not included in the price given above, but we will quote prices on same when desired.

WRITE FOR DISCOUNTS.

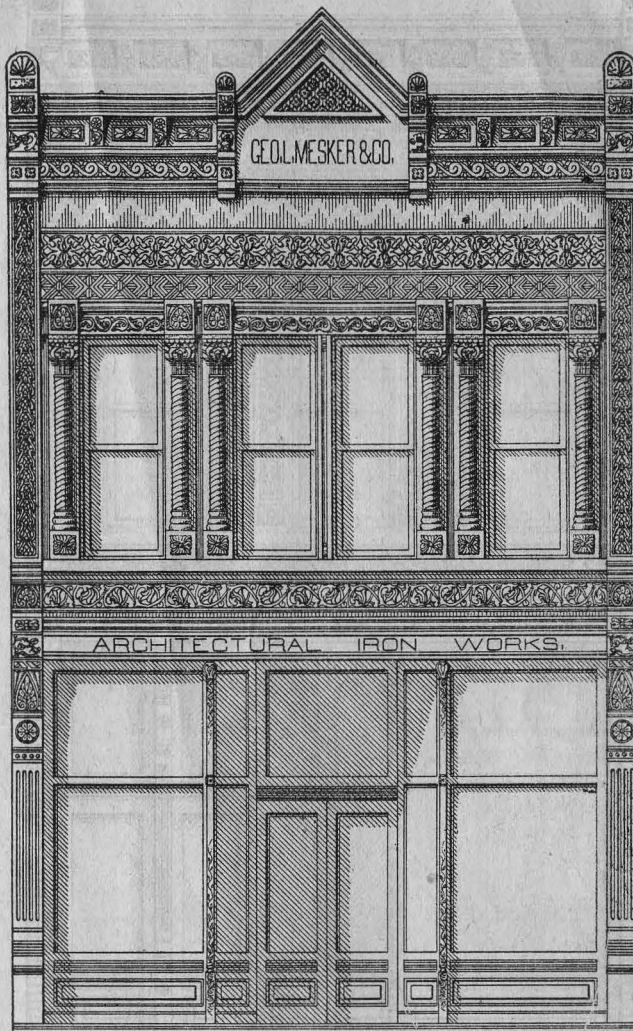
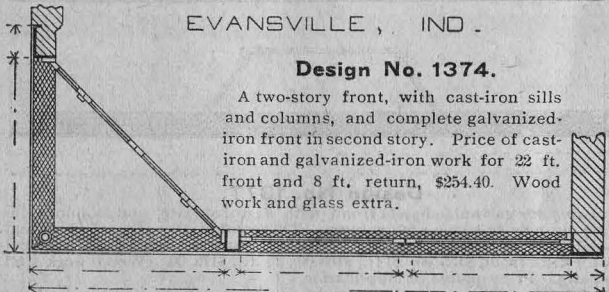
Are you going to build? If so, send for complete catalogue and bottom prices.



EVANSVILLE, IND.

Design No. 1374.

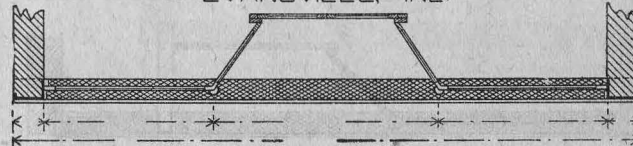
A two-story front, with cast-iron sills and columns, and complete galvanized-iron front in second story. Price of cast-iron and galvanized-iron work for 23 ft. front and 8 ft. return, \$254.40. Wood work and glass extra.

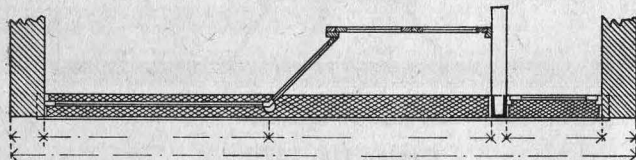
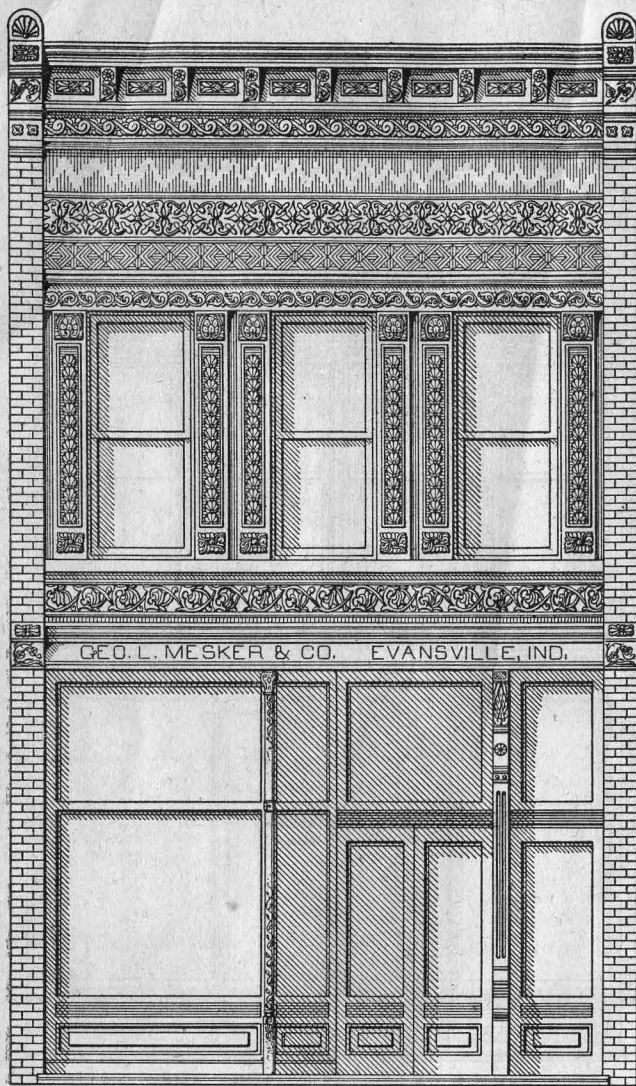


EVANSVILLE, IND.

Design No. 1375.

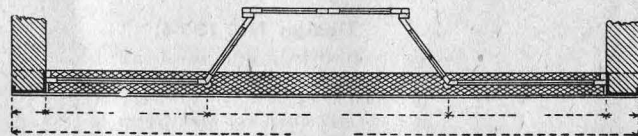
A two-story front, with cast-iron sills and side columns, and fancy cast-iron sash columns at corners of recess, and complete galvanized-iron front in second story. Price of cast-iron and galvanized-iron work for 21 ft. front, \$168.15; 23 ft., \$179.40; 25 ft., \$190.65. Wood work and glass extra.





Design No. 1376.

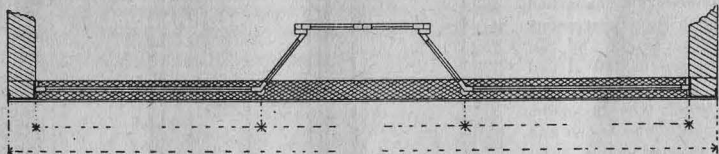
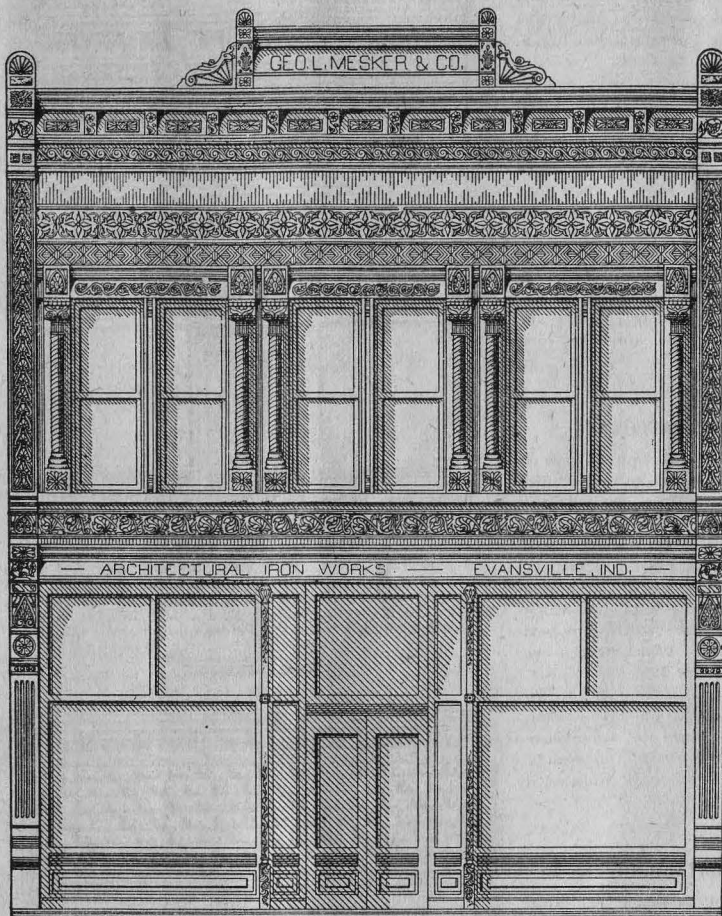
A two-story galvanized-steel front, with cast-iron sill course, one cast-iron box column, and one cast-iron sash column. If cast-iron side columns are wanted to cover side brick walls, they will be quoted on application. Price of cast-iron and galvanized-steel work for 20 ft. front, \$112.50; 22 ft., \$121.25; 24 ft., \$130.00. Wood work and glass extra.



Design No. 1377.

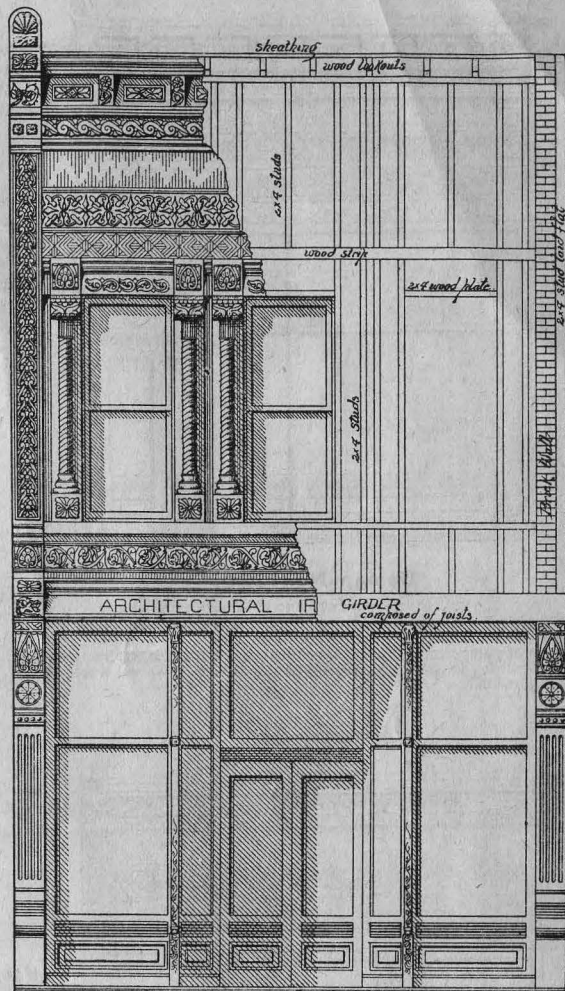
A two-story galvanized-steel front, with cast-iron sills and columns, including our new cast-iron sash columns. This combination of steel brick and stamped work is much admired. Price of cast-iron and galvanized-steel work for 21 ft. front, \$155.00; 23 ft., \$165.00; 25 ft., \$175.00. Wood work and glass extra. Price quoted on application.

WRITE FOR DISCOUNTS.

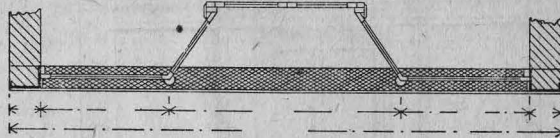


Design No. 1378.

A two-story galvanized-steel front, with cast-iron sills and columns, including our new cast-iron sash columns. A splendid design for a wide storeroom. Price of cast-iron and galvanized-steel work for 26 ft. front, \$196.25; 28 ft., \$207.50; 30 ft., \$218.75. Wood work and glass extra. Prices quoted on application.



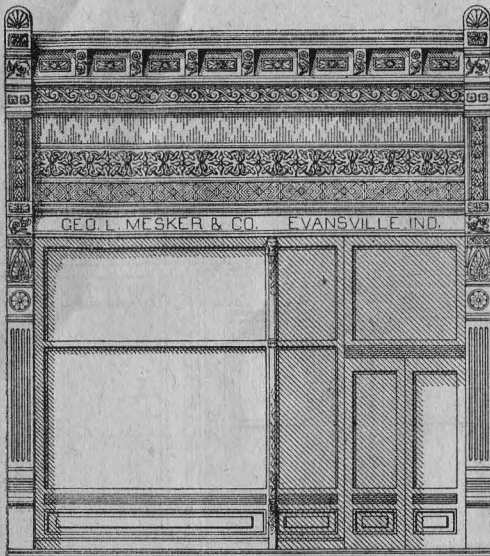
— GEO. L. MESKER & CO. EVANSVILLE IND. —



Design No. 1379.

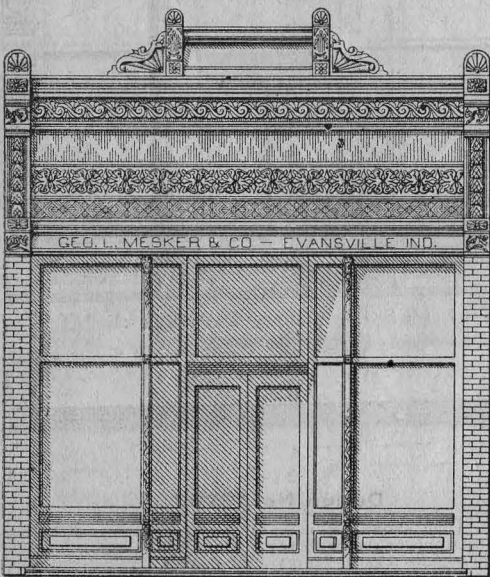
This drawing shows the manner of placing our modern galvanized-steel fronts on the buildings. This work is so easily accomplished that no reason exists for making mistakes. We will guarantee that the cost of putting up one of our galvanized steel fronts will be but little more than one-half the cost of putting up a front made by other parties. We send with each front complete detail drawings and explanations, so that any mechanic can put up the work.

WRITE FOR DISCOUNTS.



Design No. 1380.

A one-story front, with cast-iron side columns and cast-iron sash column and sill course, and galvanized-iron front. This makes a good arrangement for narrow store buildings. Price of cast-iron and galvanized-iron work for 16 ft. front, \$87.65; 18 ft., \$93.55; 20 ft., \$99.45; 22 ft., \$105.35. Wood work and glass extra.



Design No. 1381.

A one-story front, with brick side walls, cast-iron sill course and sash columns and stamped galvanized-iron front. Price of cast-iron and galvanized-iron work for 19 ft. front, \$87.65; 21 ft., \$94.90; 23 ft., \$102.15. Wood work and glass extra.

WE LEAD

All manufacturers in sheet steel stamped work for store fronts. Having the finest facilities and handsome and well proportioned patterns, we are able to place on the market the finest line of galvanized-steel fronts that can be found. We do not use the same old styles year after year, giving to our customers this year the same style of work that we sold ten or a dozen years ago, as most manufacturers do, but we are continually producing new ideas and improvements. Our customers may therefore rest assured that when they purchase our fronts they will not get the same designs that their neighbors may have bought years ago. We call particular attention to our new cast-iron sash columns. They are handsomely ornamented, and make an elegant finish for recessed show windows and doors. They are superior to gas-pipe or wood finish, and are sure to prove satisfactory.

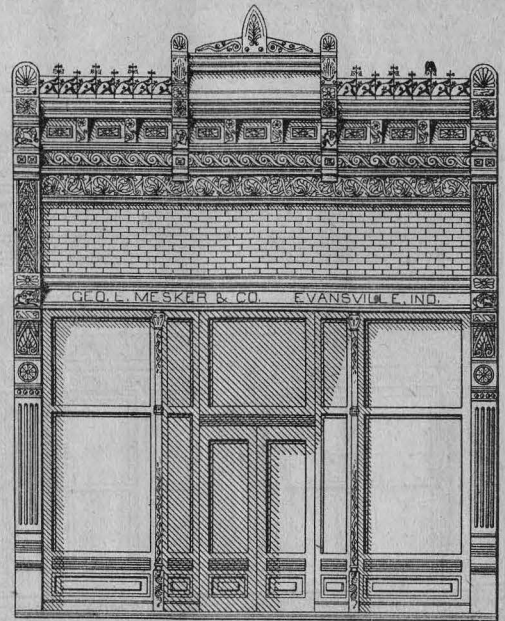
WE WANT YOUR PATRONAGE

And will give you every inducement to give us your orders. All we want is the opportunity to figure on your work, and if we can not save you money, and furnish better material and handsomer fronts than other firms, then we will not expect to get your order. Send us full particulars, giving the width of the proposed building, the height of stories, and state which design is preferred, and we will quote best net figures on the front. When figures are given by other firms that are lower than ours, we would like to have an opportunity to estimate on the same list of work quoted by them, or upon the same design, and we will clearly show that our prices are lower than any firm in the United States. Don't order any work until you have our prices.

COMPLETE CATALOGUE.

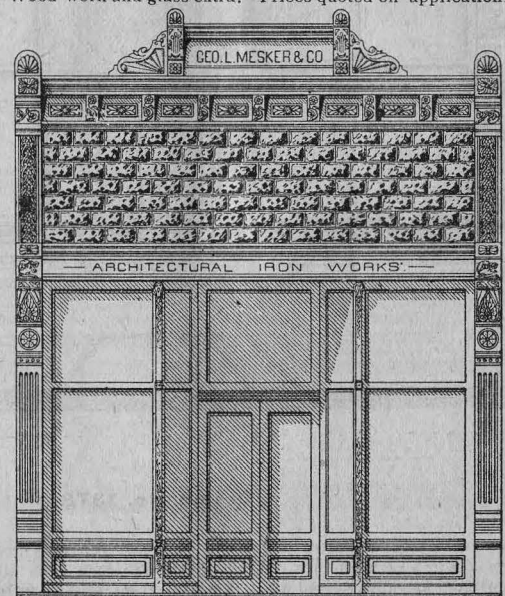
If you do not find in this catalogue a suitable design for your building, if you are going to build, send for our complete catalogue and best discounts. We publish the largest variety of designs of any firm in the country and can suit any taste. Our prices are the lowest and our work is beyond comparison. In addition to the designs shown, changes can be made, such as using the upper part of one design and the lower part of another, and one-half of a double front can be used for a single front, and two single fronts can be put together to form a double front, etc. With these changes in view it will be seen that our catalogue gives a very great variety of designs. If it is found that the catalogue contains nothing which suits your requirements, then you have only to write us fully in regard to the matter and describe your wants, and we will send a special drawing. It is our aim to please all in our designs and our prices, and we will spare no efforts to do so.

WRITE FOR DISCOUNTS.



Design No. 1382.

A one-story front, with cast-iron sill course, angle columns, and sash columns and galvanized-iron front, with cast-iron cresting. Price of cast-iron and galvanized-iron work for 20 ft. front, \$131.25; 22 ft., \$138.75; 24 ft., \$146.25. Wood work and glass extra. Prices quoted on application.



Design No. 1383.

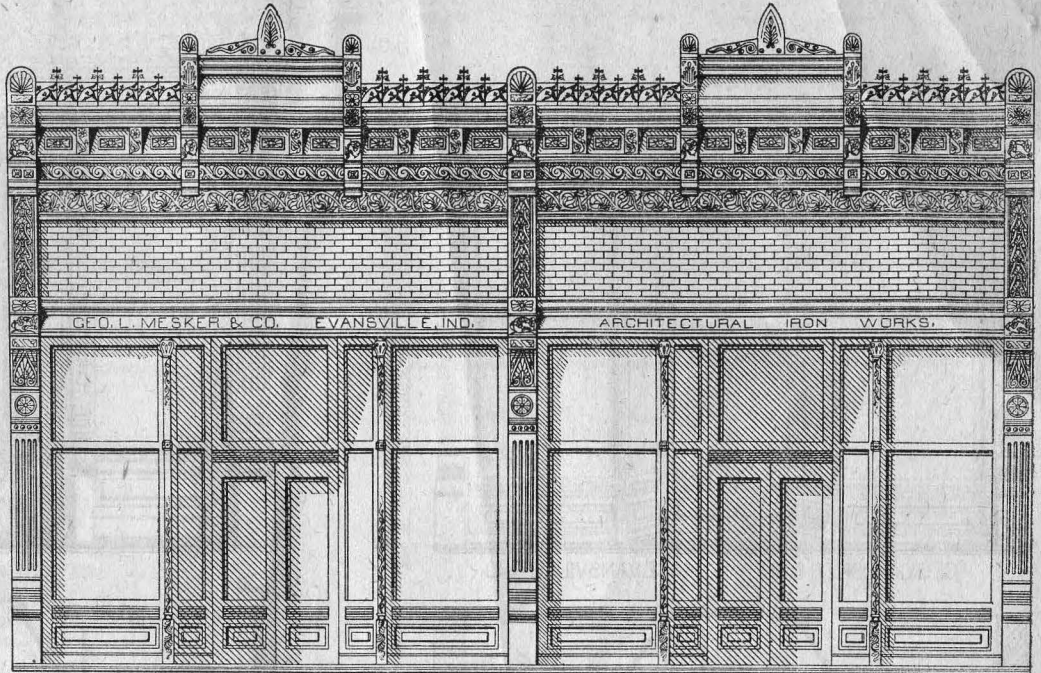
A one-story front, with cast-iron sill course, side columns and ornamented sash columns, and galvanized-iron rock face front with handsome cornice, pilasters, etc. Price of cast-iron and galvanized-iron work for 20 ft. front, \$116.25; 23 ft., \$126.20; 26 ft., \$138.15. Wood work and glass extra.

GALVANIZED IRON AND STEEL.

The public is not generally well informed in regard to this material and there are opportunities for unscrupulous manufacturers to deceive their customers in furnishing this class of work. The terms "galvanized-iron" and "galvanized-steel" are used synonymously and for the same material. All galvanized sheets are made of steel, but as there are many grades of steel the galvanized sheets may be good or bad. The railroads classify only galvanized-iron and therefore all galvanized-steel work is shipped as galvanized-iron, and this leads to the general use of this name. We can buy at a low price galvanized-steel of poor quality which is brittle and to which the coating of zinc does not adhere closely, but while some firms make use of this kind of material and are thus able to quote low prices, we still believe that it pays us and gives better satisfaction to our customers to use the best. We therefore use in all our galvanized work the best quality of soft steel, all carefully worked and galvanized by the best patent process, which gives it an even and durable coating. Our customers can depend on getting the best material made.

Design No. 1384.

One-story galvanized-steel front, with cast-iron columns and sill course. The combination of stamped work and galvanized-steel brick with cast-iron cresting makes a handsome front. Price of cast-iron and galvanized-steel front, 33 ft. wide, \$240.65; 40 ft., \$248.15; 42 ft., \$255.65. Wood work and glass extra.



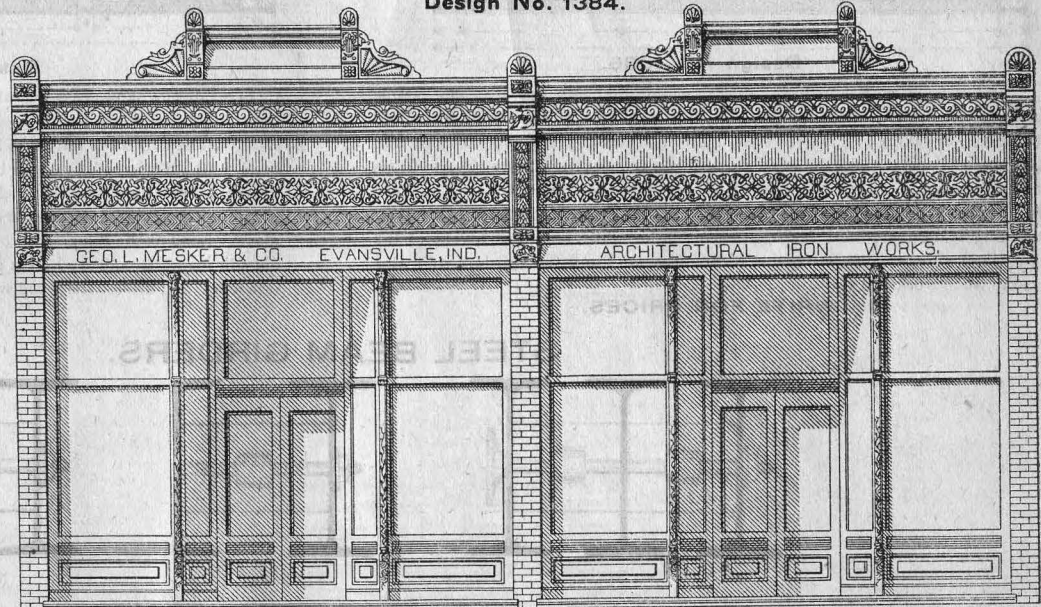
Design No. 1384.

CAST-IRON SASH COLUMNS.

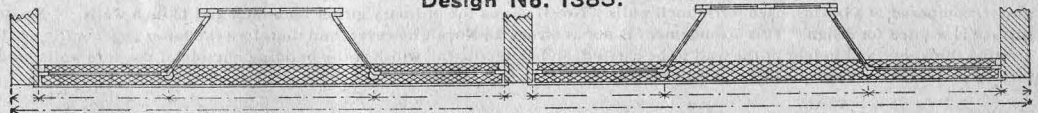
We wish to call particular attention to our new cast-iron sash columns for the corners of recess show windows. They not only protect the corners of the wood work, but being handsomely ornamented and having a carved base and capital, they are much more ornamental than the gas-pipe columns which have heretofore been in use. We show a cut of one of these columns on page 27. It costs us more to make these columns than we would pay for gas pipe, but in pursuance of our desire to give our customers the best fronts in the market we are furnishing these at the same prices we formerly charged for gas pipe columns. They can be placed on old recess fronts which have no protection. We will be pleased to quote prices to parties who have need of such protection for their wood work.

Design No. 1385.

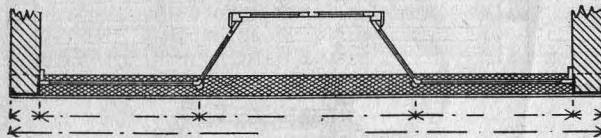
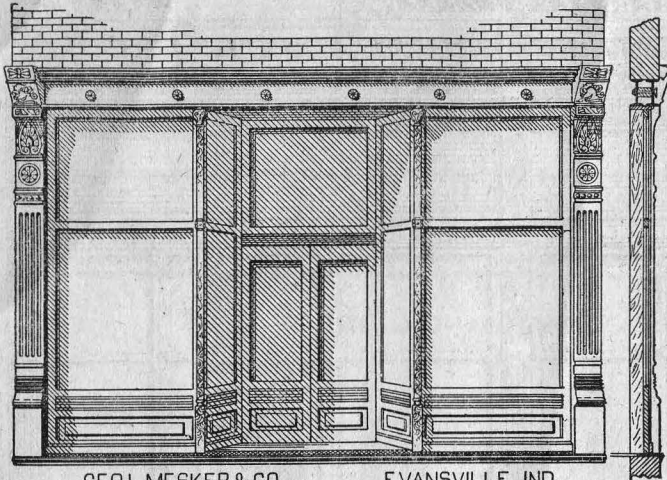
One-story galvanized-steel front, with cast-iron sills and sash columns. The brick side and division walls not faced with iron columns. Price of cast-iron and galvanized-steel front, 34 feet wide, \$160.75; 37 ft., \$171.65; 40 ft., \$182.55.



Design No. 1385.



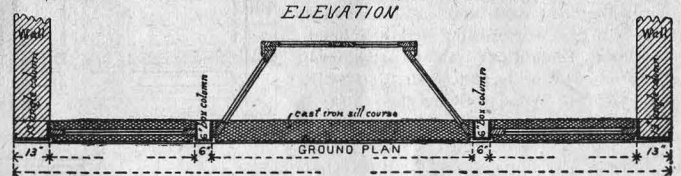
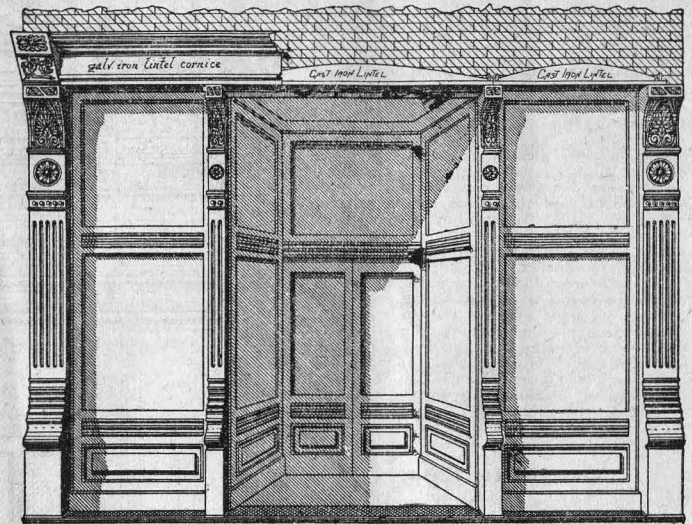
WRITE FOR DISCOUNTS.



Design No. 1386.

An arrangement for the lower story of a building, with cast-iron sill course and columns, and a steel beam girder. This arrangement can be used for old buildings, by taking out the old style, light-obstructing piers and columns, and putting in this neat and handsome work. Upon request we will send instructions for taking out old fronts and putting in one of these handsome and modern fronts, without taking down the entire front walls. Give us dimensions of your building, stating width of the front outside the walls, and the height of the story, and we will quote best prices for the iron work and steel girders, and also on the wood work and glass.

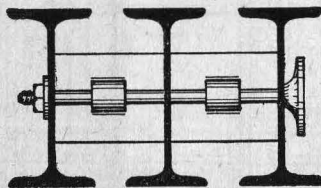
WRITE FOR PRICES.



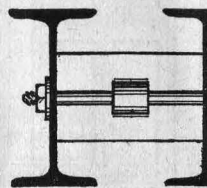
Design No. 1387.

This design shows cast-iron side columns, and also intermediate or supporting columns, with cast-iron sills and lintels, and galvanized-iron lintel cornice. A part of the cornice is left off to show the cast-iron lintels which support the brick wall. The wood work can be arranged with transom bars as shown in this design, or with light bars as in design No. 1386. This front can be used for an old building by taking out the old front and putting this handsome work in its place. Send us the dimensions of your building, stating the width of the front outside the walls, and the height of story, and we will quote best prices on the iron work, and also on the wood work and glass.

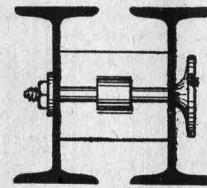
STEEL BEAM GIRDERS.



No. 45.



No. 46.



No. 47.

These three sections show the arrangement of steel beam girders for store fronts. It will be seen that it is very easy to place them in position. No. 45 shows a heavy girder, composed of 3 beams, used for 18-inch walls. No. 47 shows the ordinary girder for 9-inch and 13-inch walls. No. 46 shows a beam and channel, used where a flat surface is wanted for a sign. This arrangement is not as strong as No. 47, however, and therefore the latter is generally used. When writing for estimates on steel beams, give the thickness and height of the wall to be carried, and state also the width of the building outside of the side walls, and we will quote on beams of suitable size. See further particulars in regard to steel beams on page 27.

ROOFING TIN.

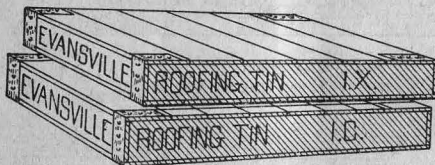
Having experienced much difficulty in procuring uniform roofing plates of high grade, we have concluded to put our special brands on the market, so that we can guarantee to our customers the best and most reliable roofing material. We call the attention of tanners and roofers to these excellent brands.

LAMASCO OLD STYLE,



This plate is manufactured with palm oil flux without the use of deleterious chemicals. It is evenly and heavily coated with the most approved terne mixture. The metal is soft and ductile, and it will stand under conditions which have ruined other brands. It works admirably under the double seamer, and can be depended on to make the best roof that can be put on a building. With reasonable care a roof covered with Lamasco Old Style will last thirty years or longer. If you want to use the finest grade of tin, write us for prices on Lamasco Old Style.

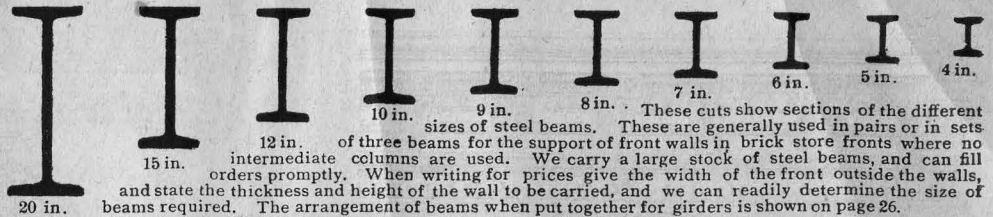
EVANSVILLE ROOFING TIN.



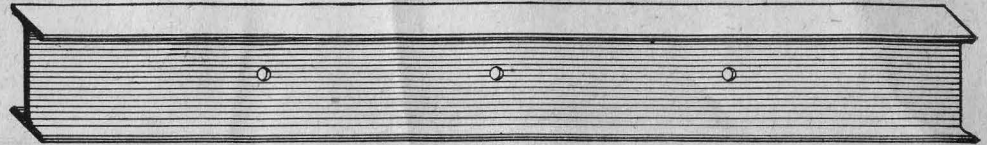
This is an excellent roofing plate of medium grade. It is much superior to the light, thinly coated plates which are being sold by other parties for medium grades. It is evenly and carefully coated, and is certain to give satisfactory results. If you want a good roofing tin at reasonable price, don't fail to try our popular brand, "Evansville Roofing Tin." Write for prices.

STEEL ROOFING.

We carry a large stock of corrugated, V crimped and standing seam steel roofing, and also steel brick and rock face siding, which we can furnish at low prices. Send for our Roofing Catalogue, in which the different kinds of steel roofing and siding are fully described. Prices quoted on application.

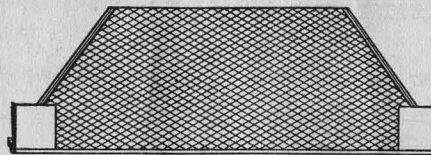


These cuts show sections of the different sizes of steel beams. These are generally used in pairs or in sets of three beams for the support of front walls in brick store fronts where no intermediate columns are used. We carry a large stock of steel beams, and can fill orders promptly. When writing for prices give the width of the front outside the walls, and state the thickness and height of the wall to be carried, and we can readily determine the size of beams required. The arrangement of beams when put together for girders is shown on page 26.



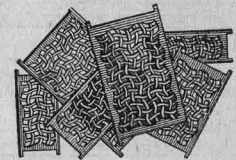
No. 48.

STEEL BEAMS AND GIRDERS.



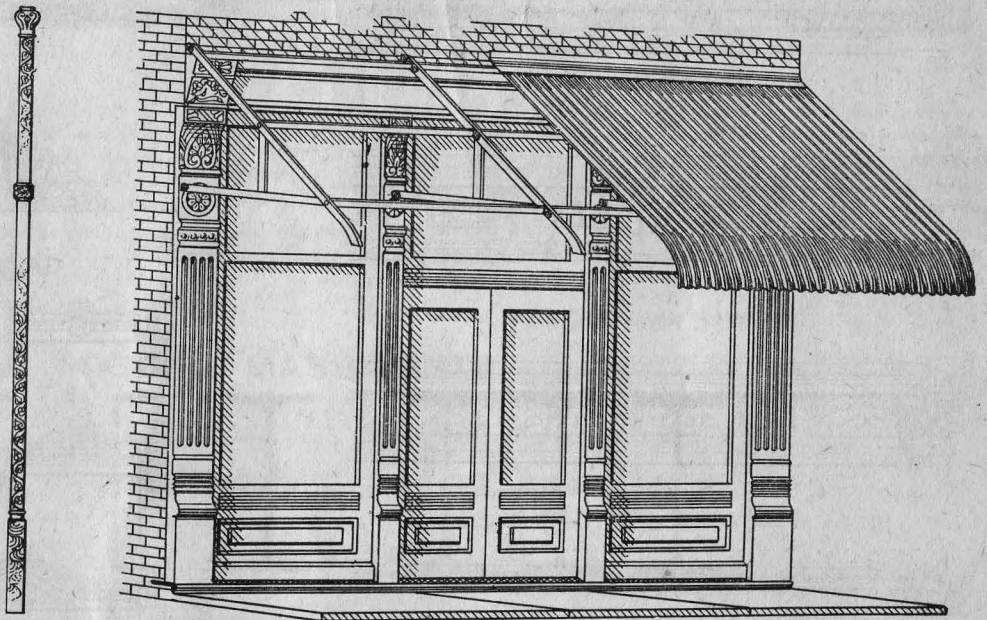
No. 49.

CAST-IRON VESTIBULE SILLS.



No. 50.

CAST-IRON AIR GRATES.

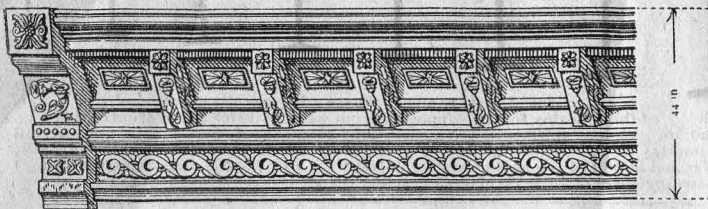


No. 51.
Cast-Iron
Sash Column

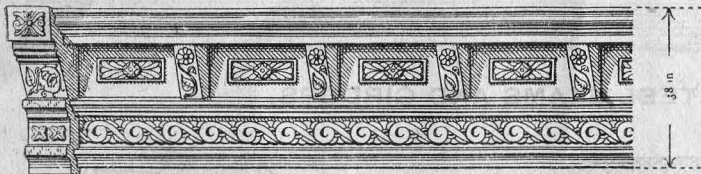
No. 52

WROUGHT-IRON AWNING FRAMES.

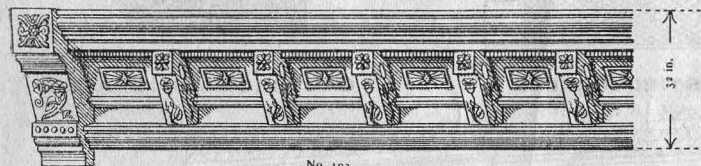
We will quote prices on application, on wrought-iron awning frames, self-supporting or supported by posts, and also on corrugated iron covering. Give us the width and length required, and state whether wanted with gas-pipe posts or self-supporting. WRITE FOR PRICES.



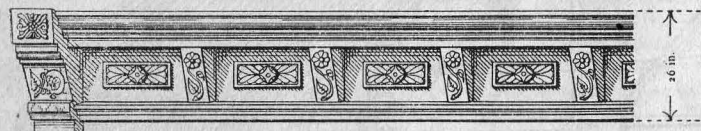
No. 100.
44 in. high.
Price, \$1.88 per ft., including brackets and head blocks.



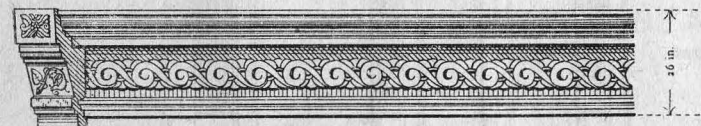
No. 101.
38 in. high.
Price, \$1.38 per ft., including brackets and head blocks.



No. 102.
32 in. high.
Price, \$1.57 per ft., including brackets and head blocks.



No. 103.
26 in. high.
Price, 95¢ per ft., including brackets and head blocks.

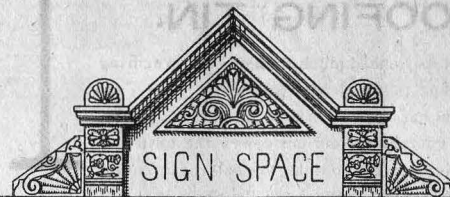


No. 104.
26 in. high.
Price, 82¢ per ft., including head blocks.



No. 105.
18 in. high.
Price, 50¢ per ft., including head blocks.

GALVANIZED IRON CORNICES.



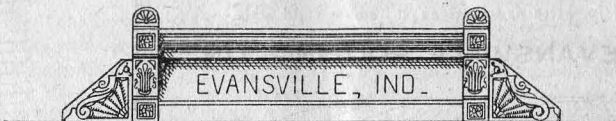
No. 106.
Price, \$15.65 and upwards.



No. 107.
Price, \$12.50 and upwards.



No. 108.
Price, \$10.65 and upwards.

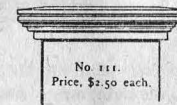


No. 109.
Price, \$9.40 and upwards.

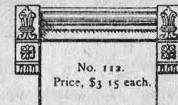
GALVANIZED IRON PEDIMENTS.



No. 110.
Price, \$3.45 each.



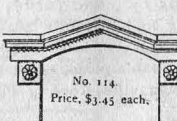
No. 111.
Price, \$2.50 each.



No. 112.
Price, \$3.15 each.



No. 113.
Price, \$3.75 each.



No. 114.
Price, \$3.45 each.



No. 115.
Price, \$3.75 each.



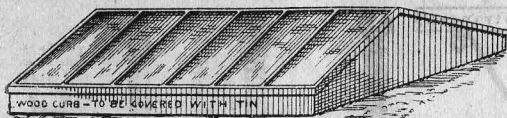
No. 116.
Price, \$7.50 each.



No. 117.
Price, \$6.25 each.

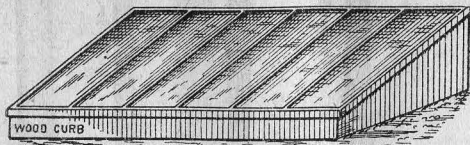
GALVANIZED IRON WINDOW CAPS.

WRITE FOR DISCOUNTS.



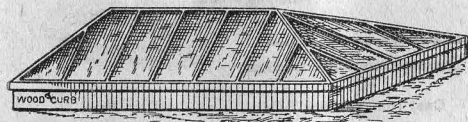
No. 118

We will quote prices on application for galvanized iron non-leaking skylight frames and rough plate glass.



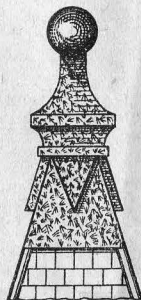
No. 119.

We furnish glass cut to exact sizes, carefully packed in boxes.

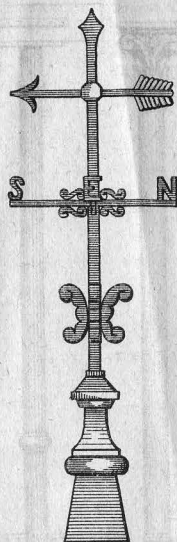


No. 120.

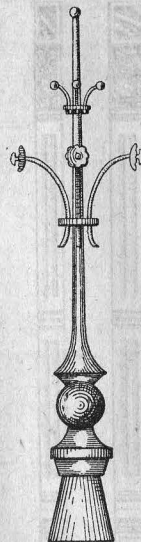
Galvanized Iron Skylight Frames.



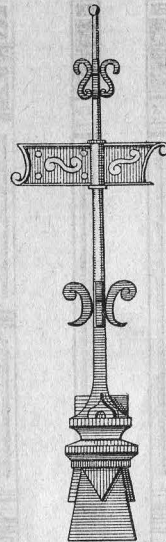
No. 121.
Price, \$6.25.



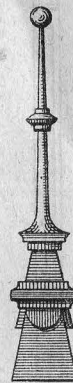
No. 122.
Price, \$12.50.



No. 123.
Price, \$10.00.



No. 124.
Price, \$13.75.



No. 125.
Price, \$8.15.

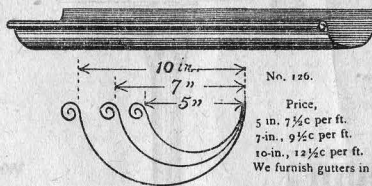
Galvanized Iron Finials.



No. 130.
Finials, 63c each.



No. 131.
Stamped Blocks, 10c each.



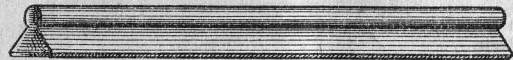
No. 126.
Price,
5 in., 7½c per ft.
7-in., 9½c per ft.
10-in., 12½c per ft.
We furnish gutters in 8 ft. lengths, securely nested and bundled

Galvanized Iron Hanging Gutter.

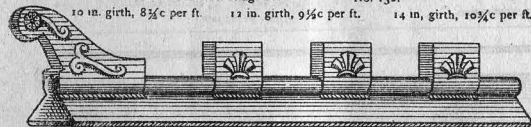


No. 127
Price,
4 in. 8¾c per ft.
6 in. 10c per ft.
8 in. 11¼c per ft.

Galvanized Iron Box Gutters.



Galvanized Iron Ridge Roll. No. 132.
10 in. girth, 8½c per ft. 12 in. girth, 9½c per ft. 14 in. girth, 10¾c per ft.



No. 133.

Adjustable Galvanized Iron Cresting.

Composed of 14 in. Ridge Roll and stamped finials and blocks. (See prices above.)



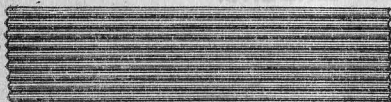
No. 128.
3-in., 7½c per ft. 4-in., 10c per ft.
5 in., 12½c per ft. 6 in., 15c per ft.

Galvanized Iron Conductor Pipe.

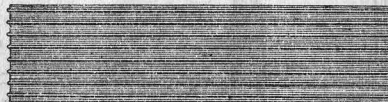


No. 129.
14 in. girth, 10¾c per ft. 18 in. girth, 14c per ft.

Galvanized Iron Roof Gutters.



No. 134.
Corrugated Steel Roofing and Siding.
Prices quoted on application.



No. 136.
Beaded Steel Ceiling.
Prices quoted on application.



No. 135.
Rock Face Steel Brick Siding.
Prices quoted on application.



No. 135.
V Crimped Steel Roofing.
Prices quoted on application.



No. 137.
Plain Sheet Steel Brick Siding.
Prices quoted on application.

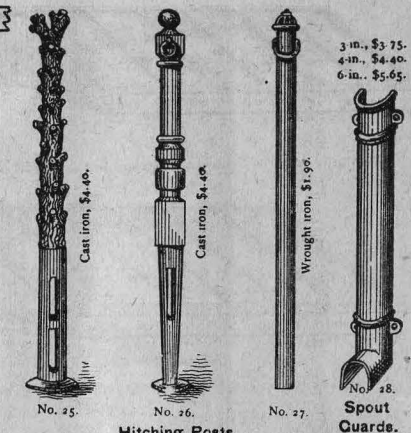
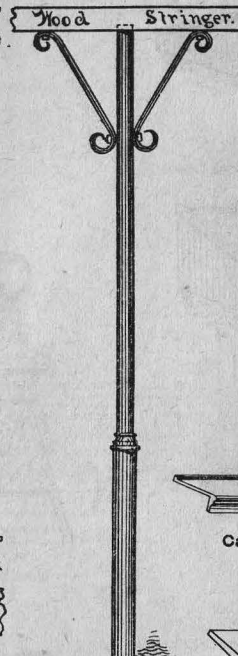
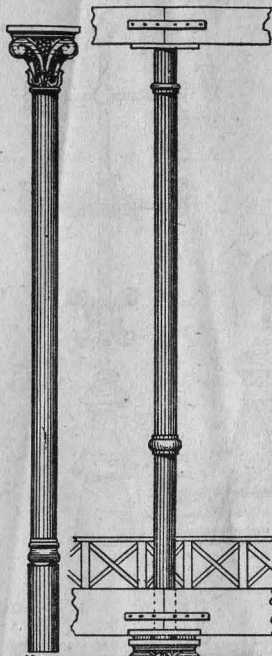
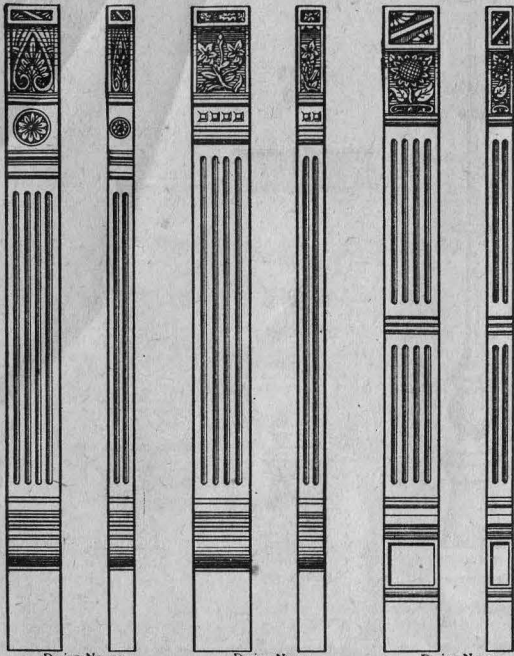


No. 139.
Rock Face Steel Siding.
Prices quoted on application.

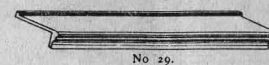
Send for Catalogue.

Send for Catalogue

WRITE FOR DISCOUNTS.



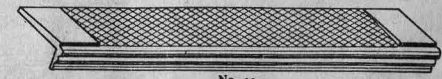
3 in. \$3.75
4 in. \$4.40
6 in. \$5.65



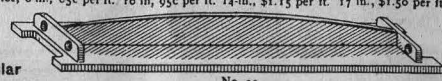
No. 29.
Cast Iron Window Sills.
Price, 6 2/4c per ft.



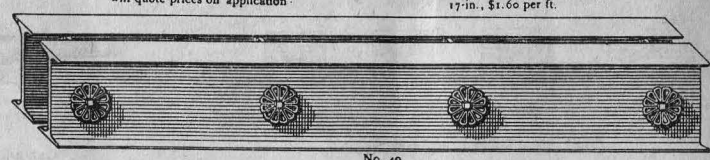
No. 30.
Drip Pans.
Price, \$1.60 each.



No. 31.
Cast Iron Sills.
Price, 8-in., 85c per ft. 10 in, 95c per ft. 14-in., \$1.15 per ft. 17 in., \$1.50 per ft.

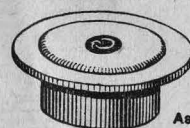


No. 32.
Cast Iron Lintels.
Price, 9-in., 95c per ft. 13 in., \$1.10 per ft. 17-in., \$1.60 per ft.

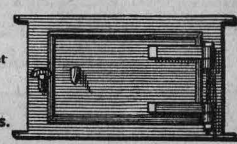


STEEL BEAM GIRDEES.

In writing for prices on steel beams, give width of span, full length of beams, and the height and thickness of wall to be supported, and we will quote beams of proper size.



Cistern and Coal Hole Rings and Covers.
Extra heavy, suitable for street manholes.



Ash Pit and Furnace Doors.

Prices quoted on application.

Prices quoted on application.

We will take pleasure in quoting prices on any iron work for buildings on application.

Write for prices, and also for discounts on catalogue prices.

GEO. L. MESKER & CO.
EVANSVILLE, IND.

Cast Iron Columns.

Price of Square Columns:

| | 6-in. face. | 8-in. face. | 10-in. face. | 12-in. face. |
|---------------------|-------------|-------------|--------------|--------------|
| Box columns . . . | \$20.65 | \$21.88 | \$23.75 | \$26.35 |
| Angle columns . . . | 20.65 | 21.25 | 21.88 | 23.75 |

Round Cast Iron Columns:
Price, 5-in., \$16.88; 6-in., \$18.75; 8-in., \$25.00.

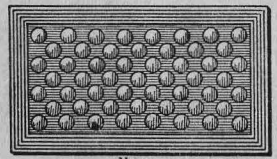
All our square columns are cast in one piece, including base, capital and ornaments



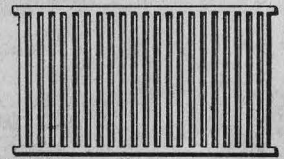
No. 33. Cast Iron Area Grates.



No. 34.



No. 35. Concrete Pavement Lights.



No. 36. Wrought Iron Grates.



Sash Weights.

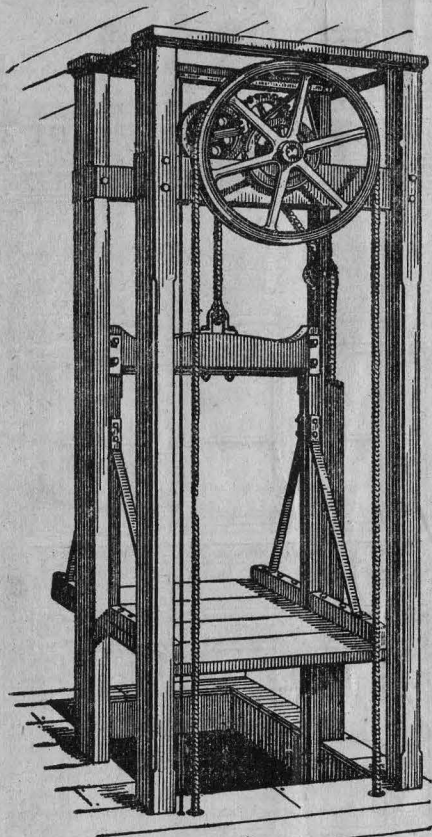
Stock sizes:

| | | | |
|------------|--------------------|-------------|--------------------|
| 4 lb . . . | 1 3/8 x 10 1/2 in. | 12 lb . . . | 1 3/4 x 20 1/2 in. |
| 5 " . . . | 1 3/8 x 13 1/2 " | 13 " . . . | 1 3/4 x 21 1/2 " |
| 6 " . . . | 1 3/8 x 16 " | 14 " . . . | 1 3/4 x 22 1/2 " |
| 7 " . . . | 1 3/8 x 15 " | 15 " . . . | 1 3/4 x 24 " |
| 8 " . . . | 1 3/8 x 16 1/2 " | 16 " . . . | 1 3/4 x 25 1/2 " |
| 9 " . . . | 1 3/8 x 19 " | 17 " . . . | 1 3/4 x 27 1/2 " |
| 10 " . . . | 1 3/8 x 22 " | 18 " . . . | 1 3/4 x 29 " |
| 11 " . . . | 1 3/8 x 17 " | | |

No. 39.
Cast Iron Columns.
arranged for support of girders and roof trusses.
Prices on application.

We will furnish special weights, either round or square, of iron or lead. Prices on application.

Air Grates.
The following are some of our stock sizes:
5 x 16 in. . . 6 lbs. 9 1/2 x 16 in. 9 1/2 lbs.
6 x 12 " . . . 5 " 10 x 19 1/2 " 12 "
8 x 12 " . . . 6 1/2 " 10 1/2 x 22 1/2 " 14 "
8 x 15 1/2 " . . . 7 " 13 x 20 " 17 "
8 1/2 x 18 " . . . 9 " 16 1/2 x 30 " 34 "
special sizes made to order.



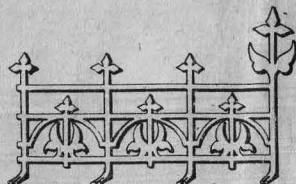
ELEVATORS.

We issue a special catalogue of elevators, containing descriptions and cuts of

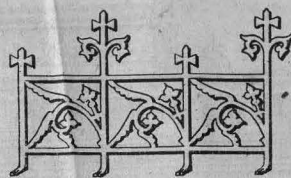
- Hand Elevators,
- Dumb Waiters,
- Belt Elevators,
- Hatchway Hoists,
- Carriage Elevators,
- Outrigger Hoists,
- Pavement Lifts,
- and Portable Hoists,

Suitable for Factories, Stores, Warehouses, Private Houses, Hospitals, etc. They are simple, safe and strong, and have latest improvements. We will take pleasure in quoting prices on complete elevators or machinery only. Let us know what you want to use an elevator for and we will give price of a suitable machine.

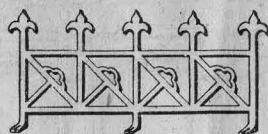
SEND FOR SPECIAL CATALOGUE.



No. 45
17 in. high, 25c per ft.



No. 46
18 in. high, 31 1/2c per ft.

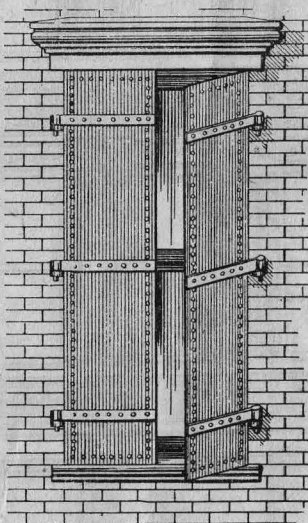


No. 47
14 in. high, 22c per ft.

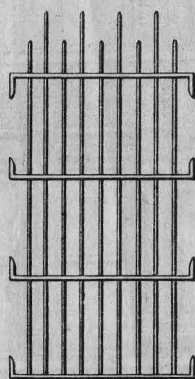


No. 48
21 in. high, 35c per ft.

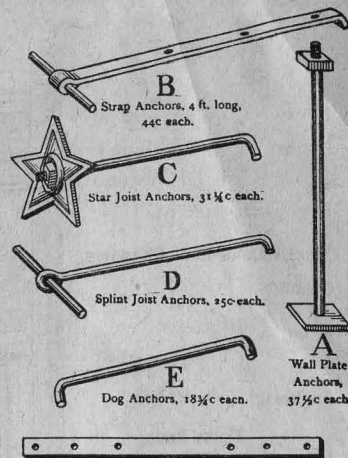
Cast Iron Roof Cresting.



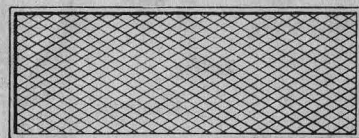
No. 41
Wrought Iron Doors and Shutters.
Prices quoted on application



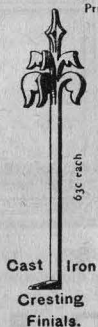
No. 42
Wrought Iron Window Guards.
Prices quoted on application.



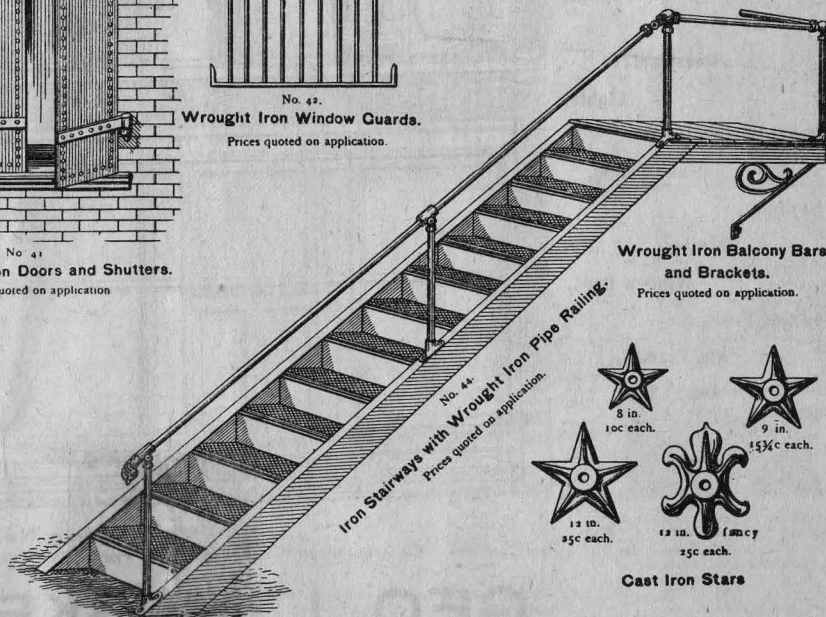
F
Straps, 25c each.
Wrought Iron Anchors.



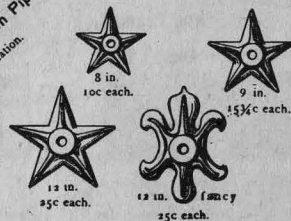
No. 43
Crimped Wire Window Guards.
Prices quoted on application.



Cast Iron
Cresting
Finials.
63c each



No. 44
Iron Stairways with Wrought Iron Pipe Railing.
Prices quoted on application.



Cast Iron Stars

Wrought Iron Balcony Bars and Brackets.
Prices quoted on application.

WRITE FOR DISCOUNTS.

MODERN STORE FRONTS.

We will take pleasure in quoting low prices on all kinds of architectural iron work, such as

**Steel Beams and Channels,
Columns,**

Sills,

Lintels,

Anchors,

Truss Rods,

Post Caps,

Plates,

Bolts,

Iron Stairs,

Railing,

Crestings,

Iron Shutters,

Window Guards,

Gratings,

Concrete

Pavement

Lights,

Metal Roofing

and Siding,

Skylights,

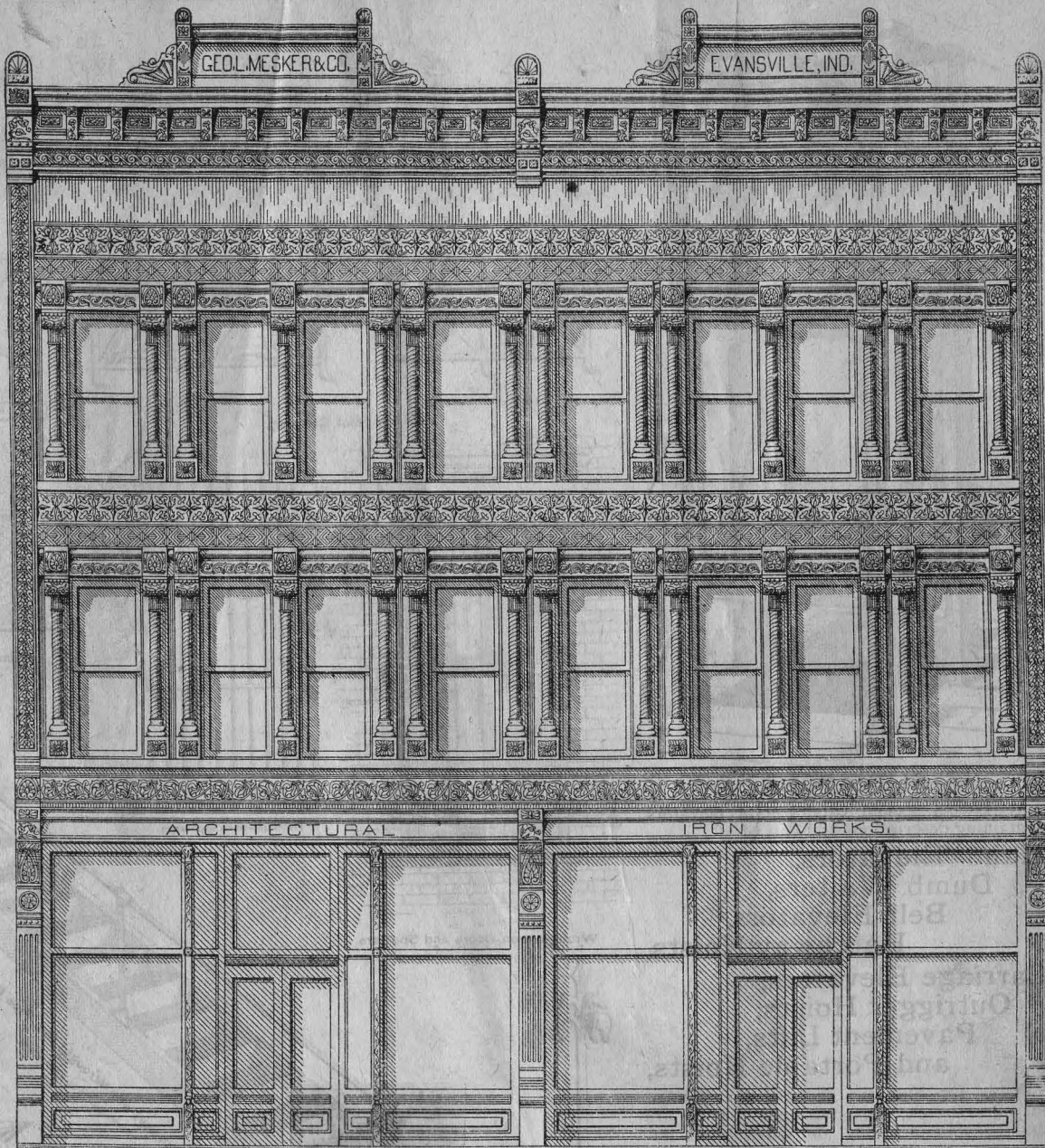
Cornices

Window Caps,

Awning Posts,

and Frames,

Etc., Etc., Etc.



Design No. 1388.

Get our prices. Don't buy until we have had an opportunity to figure on your work. We will send our complete catalogue to parties who intend to build, and quote bottom figures.

GEO. L. MESKER & CO.

ARCHITECTURAL IRON WORKS,

EVANSVILLE, IND.