

8600
UNIVERSITY
BOULEVARD



Volume 6 No. 3
July 1978

In This Issue

Director of Development Joins Staff 2

Art Critic Lauds ISUE Art Program 3

Commencement 1978. 4

Alumni Association Honors Two. 5

Foundation Aids Speech Team. 5

After Most Successful Year, Eagles Look to Next Season. . . . 6,7

Graduate Roundup. 8,9,10

Shetler Heads City Council. 11



DIRECTOR OF DEVELOPMENT JOINS ISUE STAFF

Ann Padberg, a native of St. Louis, Missouri, has been appointed Director of Development at ISUE. Her appointment was approved by the Indiana State University Board of Trustees at an April 7 meeting in Terre Haute.

Padberg comes to ISUE from the Villa Duchesne/Oak Hill School in St. Louis. At Villa/Oak Hill, an independent secondary school, she was Director of Development and Public Relations. In this capacity, she worked closely with the members of the Development Committee of the Board of Trustees, and was responsible for the school's annual fund drive. She also handled public information for the school and was editor of the school's alumni publication.

Previously, Padberg worked in the pub-

lishing field where she gained experience in writing, design and production. She was with Allyn and Bacon, Inc. of Boston, Massachusetts and with Boston Educational Research Company. In both posts, she was an editor and engaged in research. She also was an editor and production specialist with Cemrel, Inc., a national educational laboratory in St. Louis. The new Director of Development has teaching experience at both the secondary and elementary levels from schools in Ft. Madison, Iowa and St. Louis, Missouri.

Padberg holds the B.A. degree from Notre Dame College in St. Louis and has taken additional study at St. Louis University and the University of Missouri at St. Louis.

8600 UNIVERSITY BOULEVARD

8600 University Boulevard is published Winter, Spring, Summer, and Fall by the Office of the President, Indiana State University Evansville, Evansville Indiana 47712. Second class postage paid at Evansville, Indiana. Please send form 3579 to the Office of the President, ISUE, 8600 University Boulevard, Evansville, Indiana.

Volume 6, No. 3
July 1978

Readers are invited to respond to content in the form of letters signed and addressed to the editor.

EDITOR

Sherianne Standley

CONTRIBUTING EDITORS

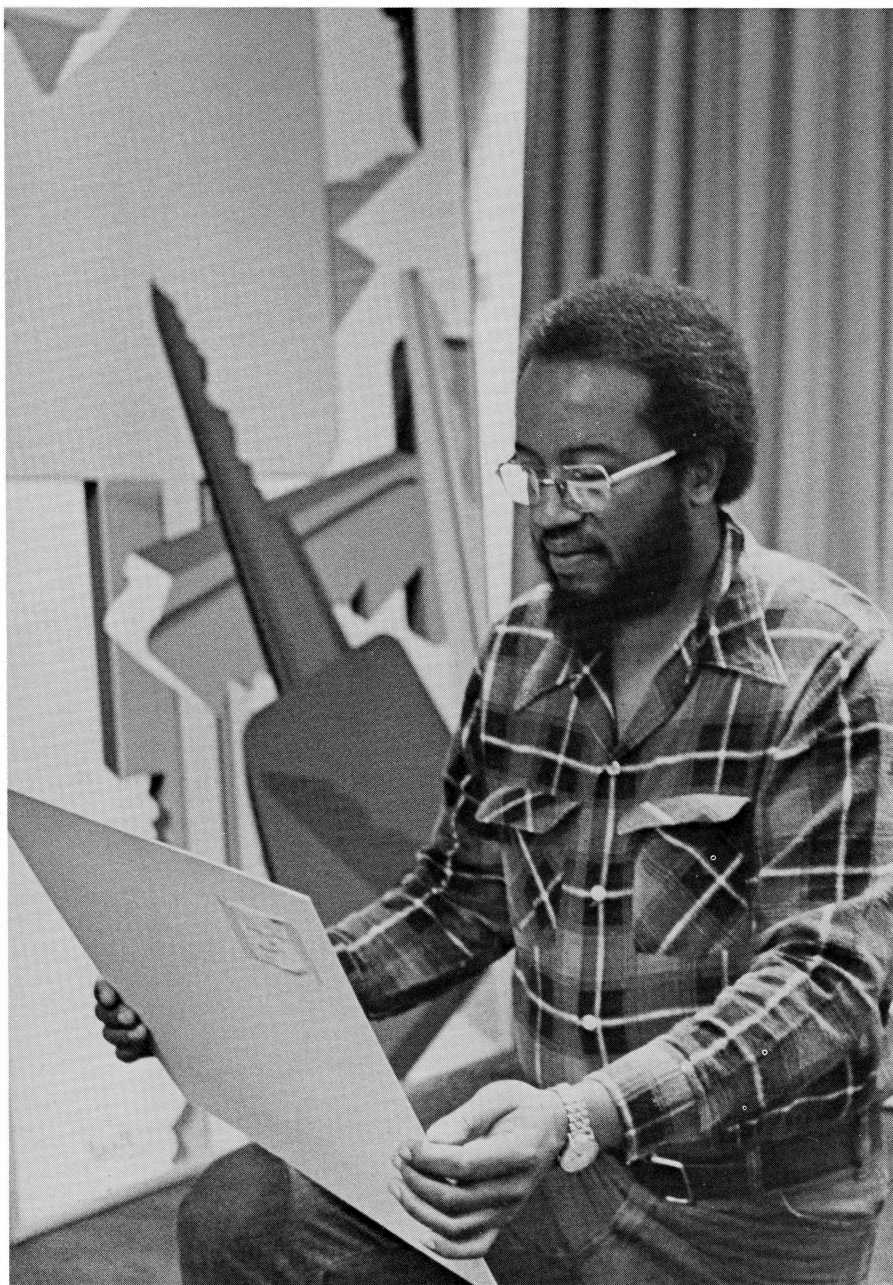
*Ralph Kent
Ann Humphrey*

ARTICLES

*Tim Ethridge
Debbie Lottes*

PHOTOGRAPHY

*Debbie Lottes
Pat Snell
Brad Whipple*



Dr. Floyd Coleman, art critic

ART CRITIC LAUDS ISUE ART PROGRAM

by Debbie Lottes

According to art critic Dr. Floyd Coleman, art students at Indiana State University Evansville are producing exceptional work.

Coleman, professor of art and art history at Southern Illinois University-Edwardsville, was on campus for three days to judge the 1978 Student Art Exhibition which opened at ISUE Sunday, April 16. The art professor has judged many university art shows and has also been a judge for professional exhibitions. In his judging critiques, Coleman looks for originality, execution of media, and whether the student has completely understood what he or she is after.

Coleman not only was impressed with the quality of the work judged, but also with the attitudes of the faculty and the Evansville community. "ISUE has some very fine art students...they are producing exceptional work," he stated. Coleman also noted that

the number of awards given and the amounts of the awards are far more than most universities. "SIU is about four times as large as ISUE, and ISUE gives about eight times as many cash awards. The \$2,225.00 in awards donated says a lot about the cooperation between the University, the business community, and the community in general." He also lauded the "esprit de corps" of the ISUE art teachers, saying they respond well to the needs of the individual students.

When questioned about what media ISUE students excel in, Coleman said, "I feel their strong works are drawing, sculpture, and prints. There are also some fine ceramic pieces." He was particularly impressed with the work of the ISUE freshman art students. "The freshman are very competitive both in two and three dimensional works."

He laughed, "It has been a most difficult task to judge these art works. Most of the works are really outstanding."



Members of the Class of 1978 listen intently to the message of Evansville Mayor Russell Lloyd's Commencement address.

COMMENCEMENT 1978

Indiana State University Evansville awarded 369 baccalaureate and associate degrees to students in the University's eighth Commencement Exercise held Saturday, May 13, at the ISUE Arena.

Four men in public service were awarded

honorary degrees during the ceremony. They are William H. Miller, Judge of the Vanderburgh County Circuit Court; Robert Fair, President of the Indiana Bar Association and President Pro Tem of the Indiana Senate; George Ashworth, Superintendent

of the Metropolitan School District of Mt. Vernon, Indiana; and Russell Lloyd, Mayor of the City of Evansville, Indiana.

In addition to receiving an honorary degree, Mayor Lloyd delivered the Commencement address. He spoke of the potential of the 1978 graduating class and said "each generation has its role in building a better world and an improved society."

He issued a challenge to the class in saying, "I would hope that you, in your growing role, become not blame-placers but policy-makers — positive policy-makers. Choose a path marked by compassion, patience, and understanding, bolstered by conscience."

According to Lloyd, "to reject participation in government on the basis that politics is a dirty business and degrading in some way

in to pass control of the political process and government to those who don't mind the dirt or degradation."

He urged graduates to take an active interest in government because of the important role it plays in their lives, and stated that government "requires the nourishment of your ideas and your participation."

Gregory Brown, 5120 Oak Hill Road, received the highest academic honors at Commencement. He graduated with a perfect 4.0 scholastic index and was awarded the distinction of Summa Cum Laude.

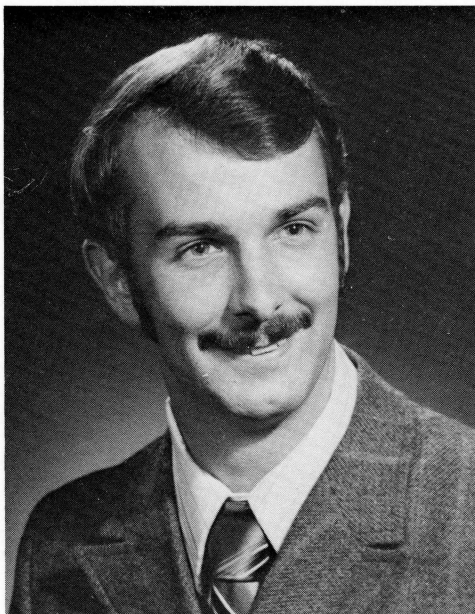
Sixteen ISUE degree candidates graduated Magna Cum Laude, which requires a scholastic index of 3.8 or higher and 19 degree candidates graduated Cum Laude, requiring a 3.6 to 3.79 grade point average.



Robert J. Fair, President of the Indiana Bar Association and President Pro Tem of the Indiana Senate, receives his honorary degree and doctoral hood from University officials. On the left is ISU President Richard Landini and on the right is ISUE Academic Vice President Robert L. Reid.

ISUE ALUMNI ASSOCIATION

HONORS TWO

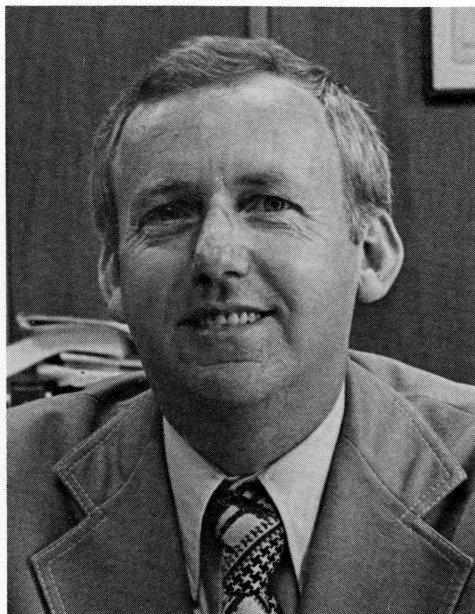


Robert Roeder

The Alumni Association of Indiana State University Evansville honored two persons for outstanding service at the organization's annual reception and dinner dance given to welcome members of the Class of 1978 May 6.

Robert Roeder, a 1971 graduate of ISUE who is Personnel Director for the State of Indiana, and Dr. Donald D. Bennett, Vice President for Administration at ISUE, received recognition for their outstanding contributions.

At thirty years of age, Robert Roeder is the youngest personnel director of any of the fifty states. Roeder graduated from



Donald D. Bennett

ISUE with a degree in business management. While a student, he organized and for two years served as President of the Student Union Board. Prior to being named Personnel Director for the State of Indiana in 1976, Roeder worked as an employment counselor, a job analyst, and supervisor of job classification for the State. He has served on numerous governmental panels and as a speaker on statewide and national programs. Last year, he was named to "Who's Who in Government," was elected President of the Indiana Society for Public Administration, and was chosen to serve on the Executive Council of the National Association

of State Personnel Executives. Roeder was awarded the first Distinguished Alumnus Award.

Dr. Donald Bennett, in his capacity as ISUE Vice President for Administration, serves as administrator over all student services areas. He joined ISUE in 1968 as Assistant Dean of the Evansville campus. He was promoted to Dean of Academic and Student Services in 1971 and was named Vice President in 1974. In addition, Bennett is an Associate Professor of Education.

Bennett received his B.S., M.S. and Ed.D. from Indiana University. He serves as secretary of the Statewide Health Coordinating

Council and was recently appointed to a three-year term on that Council by Governor Otis Bowen. He also is a member of the Southern Indiana Health Systems Agency Board of Directors, a council member of the Indiana Hospital Advisory Council, a member of the Coordinating Council for Indiana Tele-Communications, and Chairman of the North Central Visitation teams. Bennett was recognized for his role in establishing and guiding the Alumni Association during its early years.

Sharon Johnson, and Marcy Martin, both of Evansville, were chairpersons of the event.

FOUNDATION AIDS SPEECH TEAM

Six ISUE students were able to attend the spring Otis J. Aggrett Memorial Oral Interpretation Festival at Indiana State University in Terre Haute, thanks to assistance from the ISUE Foundation Forensic Fund.

At the festival, students listened to lectures on developing grammar for performance of oral interpretation and on travel literature for interpretation. They also participated in prose, poetry and free choice reading events. Critics and observers were on hand from various colleges. ISUE students shared views with other student participants and, as a result, broadened their knowledge and became more aware of developing their skills.

The ISUE students who attended were Kirby Robinson, Rick Phillips, Barbara Haas, Randy Pursley, Rita Schroeder and Karen Wakeland. They were accompanied by Assis-

tant Professor Mary Schroeder and Associate Professor Helen Sands, who both worked to organize the speech team and coach students for the festival.

According to Dr. Sands, "One of the greatest advantages of such a festival is that it builds confidence in the student. It is a real opportunity for our students to exchange ideas with students from other universities as well."

Dr. Sands feels that significant speaking experiences outside the classroom are important to the student.

Contributions made to the ISUE Foundation Forensic Fund paid for travel expenses for the ISUE speech team. The Forensic Fund was established to provide opportunities for communications students to participate in debate, speech tournaments, and oral interpretation festivals.

AFTER MOST SUCCESSFUL YEAR...

by Tim Ethridge

Indiana State University Evansville's basketball Eagles were three games away from the national title this year. Though they did not win the Great Lakes Regional title, the attention they brought to the University will mark them as champions in ISUE's history. Here, in a chronological order, are a few of the team's accomplishments.

Oct. 15—As the practices began, Eagle coach Wayne Boultinghouse knew he had a talented team. But he also knew how young his charges were, and knew the season could go either way.

Nov. 16—During three preseason scrimmages, the Eagles displayed the balanced attack which would lead them through the year. In one of the scrimmages, nine of the 13 players hit for double figures.

Nov. 26—The Eagles opened their season at ISUE Arena with a 110-72 romp over Oakland City College. Senior Randy Curl led the team with 21 points and 15 rebounds.

Dec. 3—The Eagles won their own River City Tip-Off Classic as freshman Ken Mask hit a fallaway jumper at the final buzzer to edge Oakland City 69-68. Mask's heroic foreshadowed things to come as the Eagles won several games on last-second shots.

Dec. 11—ISUE finished second in a tournament at St. Joseph, Ind. The Eagles also

had their first bout with winter weather being snowed in for two days at a Remington, Indiana motel.

Dec. 20—The Eagles showed they were a high caliber Division II team with a victory over former national champion Roanoke College in Virginia. The win gave Coach Boultinghouse's squad the school's best record ever going into the Christmas break, 5-3.

Jan. 7—The cagers returned to ISUE Arena for their first home game in 35 days, responding to a crowd of 2,215 for 93-56 victory over Missouri Baptist.

Jan. 14—ISUE began its run for a tournament bid with a 77-73 road win over Great Lakes Regional rival SIU-Edwardsville. The Eagles stood at 7-5 following the game.

Jan. 21—Cortez Collins hit a jumper at the buzzer as ISUE won their second straight test, 57-56 over Tennessee State University.

Jan. 25—The Eagles grabbed their third straight road win with a 96-64 rout of IU Southeast, then spent three days in a Sellersburg, Indiana motel, trapped by the "Blizzard of '78."

Feb. 1—Jim Schmidt sank two pressure free throws with 24 seconds to play in overtime as the Eagles edged Kentucky Wesleyan 84-82 in Owensboro, Ky. ISUE charged from a 16 point first half deficit to raise their record to 11-5.

Feb. 4—Cyndi Schultz was named homecoming queen as the Eagles won their fifth straight game. The 88-76 win over SIU-Edwardsville came before a crowd of 2,715 at ISUE Arena.

Feb. 13—Dan Labhart sank two free throws with 15 seconds to play and the Eagles hung on for a 67-66 win over nationally-ranked Northern Kentucky University. The win gave the Eagles a big push toward receiving a tournament bid.

Feb. 22—Brad Bolling pumped in a 20-footer with four seconds left as the Eagles defeated Kentucky Wesleyan 91-89. ISUE was cheered on by the largest crowd in their basketball history as 3,485 persons attended "Fill the Arena Night" to see the Eagles improve their season record to 18-7.

Feb. 26—The Eagles flew high after learning they had received an NCAA tournament bid. Coach Boultinghouse celebrated at home with his family, as did Dan Labhart. Jim Schmidt pelted other players' cars with snowballs, while Randy Curl called his mother in Arkansas with the good news. The Eagles had done what they had set out to do, they had won their way into the NCAA tournament.

March 3—The Eagles are given a rousing send-off to Charleston, Illinois, the site of the Great Lakes Regional Tournament. A

pep assembly conducted by the students, faculty and administration gave the team a boost going into a re-match game with Northern Kentucky University.

March 5—An 86-78 win over the Northern Kentucky Norsemen projected the Eagles into championship play versus the host Eastern Illinois Panthers. Brad Bolling and Ken Mask provided the firepower for ISUE, who was spurred on by over 1,000 chanting Blue Crew fans. The win placed ISUE among the top 16 and final nine Division II teams in the nation.

March 6—The Eagles' season ended with tears, but also with a feeling of team unity. A 79-67 loss to Eastern Illinois University ended ISUE's most successful season. But, with time for reflection, the Eagles realized what they had accomplished—an NCAA tournament bid with the recognition for their school coming along with it, and a 19-9 record, tying the school's record for most victories in one season. Cortez Collins was named to the tournament all star-team, while Randy Curl, Emanuel Rowser and Dan Labhart all won similar honors during in-season tourneys. And then there was the team unity. Though in the record book their season was ended that night, the players knew it would live for a long time in many hearts at ISUE.

EAGLES LOOK TO NEXT SEASON

Encouraged by their first NCAA post-season basketball appearance, the ISUE Eagles have released their 1978-79 basketball schedule. It represents the strongest schedule ever for the Eagles as 18 of the 26 games are NCAA Division I or Division II opponents.

Appearing on the Eagles' schedule for the first time are Central State, Southwest Missouri, Oral Roberts, Tiffin and the University of Illinois Chicago-Circle. The latter is coached by Tom Meyer whose father Ray Meyer is the legendary coach at DePaul.

ISUE will play home and home dates with Indiana Central, Bellarmine, Transylvania, Oakland City, Kentucky Wesleyan, S.I.U. Edwardsville, IU Southeast and St. Joseph. Of the 26 games, the Eagles will play 14 at home. This is the first time the balance of the schedule has favored the Eagles.

ISUE is defending champion in the Third

Annual River City Tip-Off Classic. The four-team field includes Indiana Tech, Oakland City and Chicago-Circle. Pairings for the two-day tournament will be announced at a later date.

"We have worked hard at building our schedule to the point where we play mostly Division I and Division II opponents. This has always been a concern of the NCAA selection committee so we have now eliminated this problem," cited ISUE Athletic Director and Coach Wayne Boultinghouse. "The schedule presents a tremendous challenge for us next year, but the enthusiasm created by our tournament participation this year should provide us with a winning image. Definitely, we want to set our sights on another tournament appearance."

Coach Boultinghouse has indicated that an additional game is being sought to give the Eagles a full slate of 27 games.



1978-79 BASKETBALL SCHEDULE

Dec. 1 & 2	RIVER CITY TIP-OFF CLASSIC (ISUE, Indiana Tech, Chicago-Circle, Oakland City)	6:30 PM 8:30 PM
Dec. 7	at Southwest Missouri	8:00 PM
Dec. 9	at Oral Roberts	8:00 PM
Dec. 13	at Indiana Central	7:30 PM
Dec. 16	TIFFIN	8:00 PM
Dec. 20	MISSOURI BAPTIST	8:00 PM
Dec. 30	at Northern Kentucky	8:00 PM
Jan. 3	at IU Southeast	7:30 PM
Jan. 6	CENTRAL STATE (OHIO)	8:00 PM
Jan. 9	at Bellarmine	8:00 PM
Jan. 11	KENTUCKY WESLEYAN	8:00 PM
Jan. 13	SOUTHERN ILLINOIS U.—EDWARDSVILLE	8:00 PM
Jan. 20	TENNESSEE STATE	8:00 PM
Jan. 24	at Transylvania	7:30 PM
Jan. 27	INDIANA CENTRAL	8:00 PM
Jan. 31	at Oakland City	7:30 PM
Feb. 3	ST. JOSEPH	8:00 PM
Feb. 6	at Southern Illinois U.-Edwardsville	8:00 PM
Feb. 10	OAKLAND CITY	8:00 PM
Feb. 13	BELLARMINE	8:00 PM
Feb. 15	IU SOUTHEAST	8:00 PM
Feb. 17	TRANSYLVANIA	8:00 PM
Feb. 21	at Kentucky Wesleyan	8:00 PM
Feb. 24	at St. Joseph	8:00 PM
Feb. 26	at Chicago-Circle	8:00 PM

Home games are those capitalized.

the GRADUATE ROUNDUP

The Graduate Round-Up features alumni of Indiana State University Evansville who are making noteworthy contributions in their respective fields. Information is gleaned from the Alumni Information Card, friends of alumni, and the Alumni Association officers and Executive Board. Alumni are invited and encouraged to record their accomplishments on the Alumni Information Card (found on the next page) and return it to the ISUE Office of Alumni Affairs.

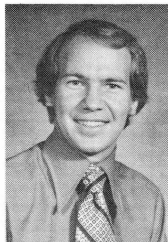
1972

ROCKY GOTTMAN is a sales representative with Continental Emsco in New Harmony, Indiana. He was a history major at ISUE.

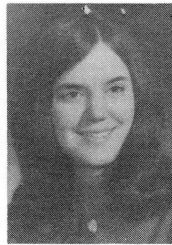
GARY LONG has completed his Ph.D. and is a scientist at the University of Chicago. Gary was a biology and life science major at ISUE.

1973

CHARLES E. EFFINGER was recently married to Joan Rexing. Charles is a teacher at Heritage Hills High School in Lincoln City, Indiana.



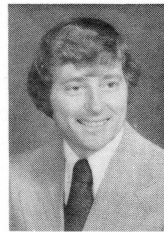
MARY KASTER was recently married to Tony Settles. Mary is senior marketing coordinator of consumer products at Ball Plastics Division.



DANIEL KING was recently married to Sandra Sides. He is employed at Klenck Masonry.

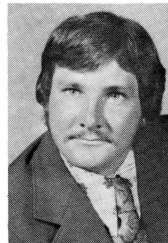
KEN SPRINGER is working in research at Indiana University-Purdue University, Indianapolis for the Riley Research Wing.

PHILLIP THOMAS has been promoted to director of student services at Indiana Vocational Technical College in Evansville.



1974

STAN COVEY teaches sixth grade and coaches junior high football and, high school golf in Waynetown, Indiana.



RICK ELLIOTT has been promoted to manager of general accounting at Welborn Hospital in Evansville.

BARBARA FISHER and **TIMOTHY CRUISE**, both ISUE graduates, were recently married. Barbara is employed at Bucyrus Erie and Tim is employed at Staples Foundry in Mt. Vernon.



CINDY HARTIG has been hired in the Radar & Digital Systems Department of Texas Instruments in Austin, Texas.

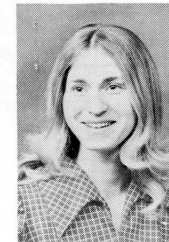
LYGIA MAUDLIN was recently married to William King. Lygia is a dental hygienist working in Columbus, Indiana.

GARY RUSSELL has successfully completed the Uniform Certified Public Accountant Examination.

NANCY E. FELKER SABATINI is a first grade teacher in the Carroll Consolidated School System, Logansport, Indiana.



NANCY TYREE is teaching hearing impaired handicapped students in the Evansville Vanderburgh School Corporation.

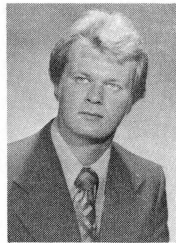


1975

JAMES A. CRISP and **SUSAN C. BRANDSASSEE**, both ISUE graduates, were recently married.

JOHN A. HAMILTON is an attorney with Bunner, John & Heathcotte in Evansville, Indiana. John received his law degree from Indiana University School of Law.

CLIFF PREHER, an accounting major, has accepted a position as controller with Black Equipment Company in Evansville, Indiana.



1976

VIRGINIA ALEXANDER was recently married to Tim Wathen. She is a dental assistant for Dr. McConnell in Evansville.

SUSAN BUSS, an elementary education major, has accepted a position as director of the Central United Methodist Church Day Nursery in Evansville.



VERA CHANLEY was recently married to Groce Marshall Jr. Vera is a teacher at Culver Elementary School in Evansville.

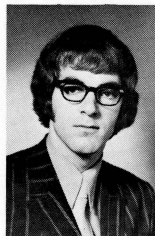
RONALD COULTAS is a staff auditor with the University of Texas System in Austin, Texas.

SUSAN EATON is a laboratory technician with General Electric in Mt. Vernon.

MARY ANN HOEHN is a packaging technician at General Electric in Mt. Vernon.

ELLEN LURKER was recently married to Steven Mitchell. Ellen is a dental assistant in the office of Dr. Glenn Norton.

MELVIN NIEMEIER is the purchasing manager for Welborn Hospital in Evansville.



KATHERINE DERR LLOYD received the Master of Religious Education degree from the Southern Baptist Theological Seminary in Commencement Exercises June 2.

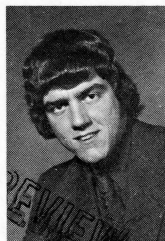
TIMOTHY SCHMITT, a finance major, has accepted a position with Hunt Wesson Foods Inc. as a sales representative.

KENNETH SENDELWECK, an accounting major, has been promoted from assistant controller to data processing manager with the Kimball Piano and Organ Company.

SCOTT SERMERSHEIM has been promoted to manager of the Liberty Loan Corporation in St. Louis, Missouri.

ALAN STABENFELDT has successfully completed the Uniform Certified Public Accountant Examination.

SCOTT THORNBURGH, a chemistry major, was recently married to Donna Sims. Scott is in graduate school at Purdue University.



GREG E. WEDDING is a management trainee at Citizens National Bank in Evansville.

1977

STEVEN ALVEY has been promoted to senior auditor for Burroughs Computer Corporation in San Gabriel, California.

DEBRA BOWERS was recently married to Mike Taylor, Debra is a dental hygienist in Mayfield, Kentucky.

ALLEN K. EICHER was recently married to Kathryn Weinert. Alan, a life science graduate, is employed by Peckenpaugh's Garden Center.

LELA M. FOSS, an elementary education major, is a third grade teacher at St. Francisville Attendance Center in St. Francisville, Illinois.



C. WAYNE KINNY was recently married to Beth Gulledege. Wayne is a computer operator at Mead Johnson & Company in Evansville.

LT. JOHN W. MILLER is stationed at Wurtsmith Air Force Base and is assigned to the 379th Security Police Squadron.

THOMAS E. PFISTER was recently married to Vicki Cameron. Tom graduated from ISUE with a communications major and is employed by the Henderson Broadcasting Company.

KATHY REPEE SCHMITT was recently married to Tim Schmitt. Kathy, an elementary education major, now teaches at Holy Rosary in Evansville.

GINA ZEHNGUT is working as a dental hygienist for an orthodontic practice in Newport Beach, California.

1978

EDWARD ALLISON has accepted a position with Continental Grain Company in Mt. Vernon, Indiana as a buyer.

ROBERT BALBACH, a finance major, has accepted a position as claims adjustor with State Farm Insurance Company in Evansville.

JERRY BLACK, a psychology major, is a case worker for Big Brothers Association in Evansville.

FRANK CUSTER III, a marketing major, has accepted a position as a claims adjustor for Allstate Insurance in Evansville.

LISA DITTMER is a dental hygienist with Dr. Warren's office in Huntingburg.



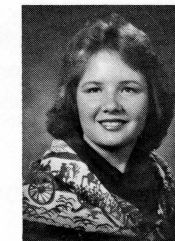
VIRGINIA EMBRY, a finance major, has accepted a position as an accountant with Cyanele Plastics in Henderson, Kentucky.

BRENDA GREENWELL, a dental assisting major, is working for Dr. Max Lingo in Evansville.

BUNNY HANCOCK was recently married to Daniel Fulkerson. Bunny is an employee of Sears Roebuck Credit Central.

BETTY S. HEATH, an accounting major, has accepted a position as an accountant with Mead Johnson & Company in Evansville.

NORA KITTRIDGE has accepted a position with National City Bank as a management trainee.



Graduate Roundup continues on next page . . .

Alumni Information Card

Please complete the Alumni Information Card with updated material and send to Director, Alumni Affairs, ISUE.

NAME _____

ADDRESS _____

CITY _____ State ____ Zip _____

Present position (list title and date you started this position):

Recent personal information (Include marriage, births, awards received, business promotions, and other pertinent personal information.)

Year graduated and major field of study.

Graduate Roundup, continued from preceding page.

PAUL W. KOESTER, a general business and economics major, has accepted a production management position with Baker Incorporated in Evansville.



ROBERT N. KORRESSEL, a management major, is a production supervisor with Packaging Corporation of America in Grand Rapids, Michigan.

REGINA LANE is working as a dental assistant in Vincennes.

JEFFERY LOCKER, a marketing major, has accepted a position as assistant manager at Woolworth's Company in Evansville. Jeff was recently married to Jeanne Sander.

CHRISTOPHER MAY was recently married to Lynn Halbig. Chris graduated from ISUE with a degree in elementary education.

DAVID OSTERMAN, an accounting major, has accepted a position as an accountant with Medco in Evansville.

WARREN PAPENMEIER, an economics major, was recently married to Starnette Seibert.

KATHY SIMPSON was recently married to Kevin Kraemer. Kathy is secretary to the Vice President for Business Affairs at ISUE. She received her degree in Office Management.

WILL SMITH, a communications major, has accepted a position as special projects coordinator with the Volunteer Action Center in Evansville.

THOMAS PEERMAN, an accounting major, has accepted a position as an accountant with Medco in Evansville.

GLORIA WELCH, an accounting major, is an auditor with Umbach and Vowels in Evansville.

JEFFERY WOLF, an accounting and finance major, is an accountant with Umbach & Vowels in Evansville.



ALUMNI OFFICE ON THE MOVE...Ralph Kent, Director of Alumni Affairs and Career Placement and his secretary, Marilyn Barefoot, carry out the last few boxes of materials from their former offices in the Administration Building. Alumni Affairs and Career Placement will once again be headquartered in the University Center. Though the office location has changed, the telephone number is still 464-1865.

SHETLER HEADS CITY COUNCIL

by Debbie Lottes

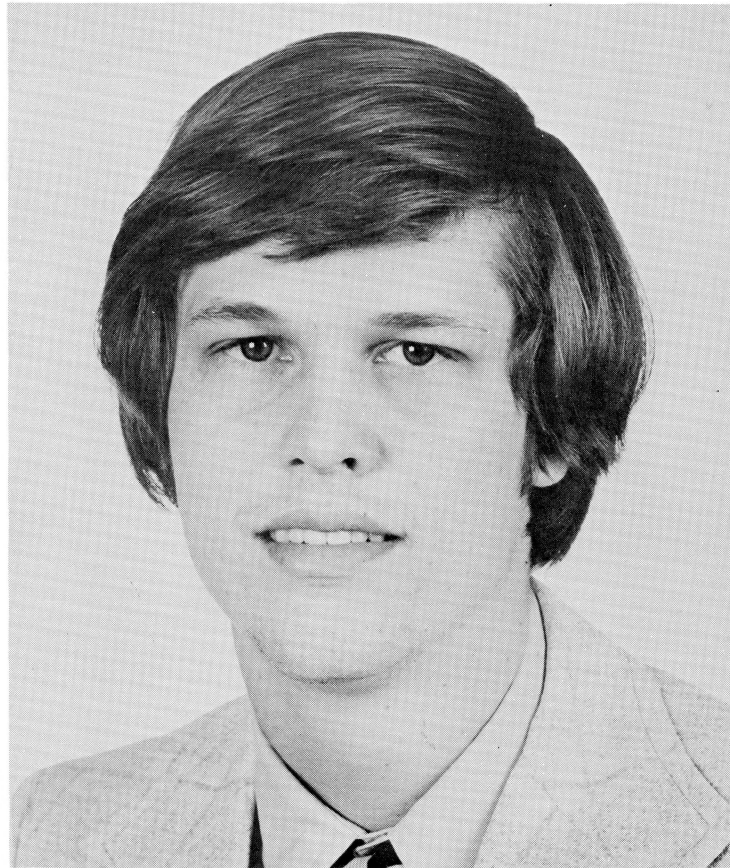
Thomas Shetler, Jr., a 1975 graduate of Indiana State University Evansville, is President of the Evansville City Council. At age 23, he is the youngest Council President ever to be elected in the history of the City of Evansville.

Though he is only 23, Shetler has plenty of political and governmental experience under his belt. As a 17-year-old high school senior, Shetler, a Republican, became involved in local politics when he was appointed by Mayor Russell Lloyd to the City Parks Board in 1972. He held this post until the end of 1975. That year, Shetler was elected to serve a four-year term as City-Councilman-at-large and was one of the top vote-getters in that race. He became Vice-President of the Council in 1977 and President in 1978.

Shetler believes his experience at ISUE was important to his advancement. "Going to a university like ISUE allows you to stay at home and become involved in politics and local government. You have the time to get your education and still meet the right people who can help you," Shetler muses.

He received the bachelor's degree from ISUE with a major in political science, but he also has learned that public office "has a lot to do with marketing," and that "skills in marketing are a valuable asset."

After six months at the helm of City Council, Shetler has changed his perspective about issues which come before the body.



He discovered that problems of city government and decisions of the Council affect all levels of government, not just local government. "You not only must view decisions as they affect city government, but also must think of the implications on state government. The problems are not as clearly defined as you might think," Shetler says.

When he was elected Council President,

he set two goals for the legislative body—to encourage more involvement by Council members in the decision-making process, particularly on financial issues, and to work toward unification among members of the different political parties.

Shetler also is concerned with improving the responsiveness of government to taxpayers' complaints and problems. "I get four to five calls a week from citizens com-

plaining about job performance in the various departments and divisions of city government," he states.

Shetler also reflects the attitude of many young persons involved in government when he tells of his concern about the Hoosier political system. "The days of the 'two-percent' club are gone. The license branches need to be in the hands of the taxpayers, not run by Republicans or Democrats," he emphasizes.

Shetler has been the prime example cited by city administration officials to show that there is a place in local government for young people.

And Shetler agrees with that philosophy. "Youth definitely have an advantage. People admire the qualities of youth—freshness, enthusiasm, new ideas, and they expect you to follow through with new ideas because you are young and fresh. They want you to have a new perspective," he says.

He is working on projects related to young people in the community, attempting to have salaries of young people increased and spending time working on the city internship program. "I feel there is a definite correlation between the high number of youths unemployed in the summer and the increase in the crime rate. We need to take a positive approach and find more summer jobs for young people," states the young leader.

Shetler is married and lives in Evansville at 4713 Weaver Road. He is working in sales at the family-owned moving and storage company.

