

8600 university boulevard



Students Cast New Light on Theatre Program

IN THIS ISSUE

Alumni Achiever3
 Campus News4,5,10,11
 New Support for ISUE Theatre6
 Graduate Roundup8
 Alumni Additions9
 Letter from Placement Office12

Cover Photos by John Humpert

8600 University Boulevard is published three times annually by the Office of the President, Indiana State University Evansville, Evansville, Indiana 47712. Please send form 3579 to the office of the President, ISUE, 8600 University Boulevard, Box #6227, Evansville, Indiana 47712.

Volume 11, No.2
1983

Readers are invited to respond to content in the form of letters signed and addressed to the editor.

Editor

Sherianne Standley

Contributing Editors

Ralph Kent
Ann Humphrey
Wayne Boultinghouse

Photography

Media Services

Reporters

Nancy Allen
John Humpert

Graphics

John Humpert

Typesetting

Terri Stierley

THANKS FOR TELEFUND '83 SUCCESS

by David Bunner, President
ISUE Alumni Association

The 10th Annual ISUE Alumni Association Telefund Drive was conducted March 14-24, 1983 and was, once again, a successful fund raising event.

For each of the three prior telefund drives, the Alumni Association has been the recipient of a challenge grant whereby new dollars contributed to the Association during the annual telefund would be matched from the challenge grant dollar for dollar. For Telefund 1983 the Alumni Association did not have a challenge grant available and the Association's Executive Board was concerned that the lack of a challenge grant coupled with the generally poor economic condition would result in fewer dollars being pledged to this year's telefund drive. This did not, however prove to be the case.

This year 111 volunteer callers contacted 2,736 Alumni Association members and 61% of those persons contacted indicated they would be making a contribution to the Association. Specific pledges were made by 1301 graduates during the telefund totaling \$24,842.50. Additionally, there were 364 unspecified pledges received. The \$24,842.50 in specific pledges represents an approximate 11% increase in specific pledges over Telefund 1982. In fact, the \$24,842.50 in specific pledges this year exceeds the amount raised in 1982 including last year's challenge grant of \$2,400.

The increase in pledges this year, considering the adverse overall economic situation, once again demonstrates that ISUE graduates appreciate the activities of their Alumni Association and shows that they intend to continue their outstanding support of the Association.

I would like to extend special appreciation to the volunteers who gave of their time and patience in making the telephone calls this year and without whom such fund raising activities would not be possible. Additionally Ralph Kent, Director of Alumni Affairs, and Ralph's secretary, Rita Ritchie, worked many overtime hours in preparing for the telefund and assisting us again in having a successful fund drive. This year's telefund chairpersons were David Gray and Pam Martin and we thank them for their cooperation and participation.

The Indiana State University Evansville Alumni Association would like to thank the following for their generous support during the ISUE Annual Fund Drive conducted during March, 1983:

- | | |
|--|---|
| ABC Hobbycraft | Memory Makers |
| Ace Hardware | Midwest Federal Savings & Loan |
| Alvers Jewelers | Moutoux Furniture & Appliances |
| American Food Management | Mrs. D's Cake Supplies |
| Anonymous Donors | National City Bank |
| Arkla | Old National Bank |
| Automotive Wholesalers, Inc. | Osco Drugs, Inc. |
| The Bouquet Shoppe | Park Place |
| Butterfield's Restaurant | Peckenpaugh's Garden Center |
| Coca-Cola Bottling Works | People's Bank & Trust |
| Gus Doerner Sports, Inc. | Pine Mountain |
| Droste's | Pour House |
| Evansville Sunday Courier & Press | Record Bar, Inc. |
| Finishing Touches | Red Spot Paint & Varnish |
| First Federal Savings & Loan Association | Red Wing Shoe Store |
| The Frame-It Shop | Royal Crown Bottling Corp. |
| Franklin Shoe Store | Scuffletown Saloon |
| Hardee's of Evansville | Shamrock Liquors |
| Helen's Fine Foods | Shetler Moving & Storage, Inc. |
| ISUE Bookstore | Sound of Music |
| Kruckemeyer & Cohn | Stocker's Landscaping & Garden Center, Inc. |
| Kuebler Flower Shop | Turoni's Pizza |
| Leather Man | Union Federal Savings & Loan Association |
| Mead Johnson | West Side Pharmacy |

WORLDS OF SCIENCE AND BUSINESS ATTRACT GRAD

by John Humpert

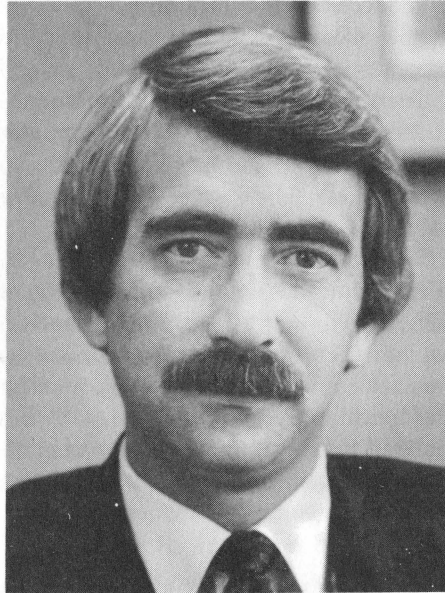
Steve Dezember likes challenges. The 1971 ISUE marketing graduate finds high aspirations an enjoyable part of his life: "I am eventually going to run a company," he proclaims. Though he doesn't know which company or how big it's going to be, Steve is convinced he has what it takes.

The former senior class vice-president of ISUE's first graduating class, Steve now works in Roswell, Georgia, as director of marketing for nonwoven business for the Kimberly-Clark Corporation. He handles the marketing responsibilities in four main product lines including the medical supply market—the company's biggest.

Steve says he's always had an interest in the developments of science, and his work history shows his devotion to business in medical markets. "By picking the proper industry, you can marry the two disciplines pretty well," he says, adding that an appreciation of science helps him perform in the business area. Since February 1981, he's worked for Kimberly-Clark. Within a year he advanced from a position as director of marketing, New Business Development, Nonwoven Business, to his present position. In January 1973, soon to be graduated with an MBA degree from ISU, Steve replied to a *Wall Street Journal* ad and began his professional career as a market research analyst in Kalamazoo for the Upjohn Company. Since then he has served in a director's capacity at Searle Pharmaceuticals and Westwood Pharmaceuticals (a Bristol-Myers subsidiary), before coming to Kimberly-Clark.

Steve's responsibilities entail planning, development—including international development—licensing, and new product acquisitions as well as marketing. He has helped chart projected growth for a company five years down the line and set goals and then strategies to achieve them. He has observed the international business

ALUMNI ACHIEVER: 8



Steve Dezember '71

community, noting in general, "there's often a very protective nationalism. Other countries' businesses frown upon U.S. business directly competing with homeland firms." According to Steve, competition on an international level runs about the same level as domestic competition, though it can be compounded by cultural differences. He notes that pharmaceuticals are not as sensitive to these differences since every civilized culture has a need for medicine. Steve has dealt with other businesses in purchasing the rights, trademarks, patents, and other entities of their products. He agrees product licensing and acquisition is a bold step, but businesses are usually willing to listen to his proposal. Before a proposal is advanced, Steve explains, "products are chosen according to the company's need for x-amount of sales volume, x-amount of profitability. It must be producible on current manufacturing operations and fit into current distribution channels. The usually very strategic criteria lead to a list of product categories. Though I may have a list of 200 opportunities, I'd be lucky to get one or two products." He emphasizes when one company acquires another, it

is to the buying company's advantage to hold on to the human resources of the other; but with a product acquisition only the legal rights to manufacture are transferred, not human resources, and that's what makes for a challenge to keep newly purchased products profitable.

Before graduating from North High School Steve had decided on a business career. His decision was based on the work environment which suited him best and his anticipated performance in the discipline. After serving three years in the Army in California and gaining a year and a half of sales experience, Steve realized a master's degree was a nearly essential tool to help him compete for market research and product management jobs. He enrolled in the year-long MBA program at ISU-Terre Haute.

Steve attended Bakersfield Junior College and Pepperdine University before he transferred to ISUE. He reflects on ISUE: "It was an enjoyable thing. It was totally different from my earlier experience in California schools where you're in an auditorium setting. Basically it (ISUE) was a dedicated group of professors and administrators who had a definite game plan to build a university environment." He attended classes in the Old Centennial School building, "The physical structure was nothing to take postcard pictures of"; and played on the university golf team and served as vice-president of the youthful Alpha Kappa Psi, a social/professional fraternity of business students. A Dean's List student, Steve graduated *magna cum laude*.

"I know the campus has grown a lot more—the humble beginnings weren't that long ago—but I get the impression that the same stimulating environment has remained with the university." Steve reports, "I'm competing for promotions with those who have MBAs from established kingpin universities, and people ask where ISUE is. I learned skills I'm using now from ISUE."

DIVISION OF BUSINESS OFFERS NEW C.I.S. DEGREE

Beginning this fall, Indiana State University Evansville will offer a new Bachelor of Science degree program in Computer Information Systems (CIS). Approved in December 1982 by the Commission for Higher Education, the program's thrust is to train graduates to be programmer/analysts for area businesses.

Two professors will be added to the faculty to accommodate the expected increase in enrollment. It is projected that about 140 students will be enrolled in the new CIS program after four years of operation.

The program is unique in Indiana in that it is the only program which meets curricular guidelines for both the Data Processing Management Associa-

tion and the American Assembly of Collegiate Schools of Business. Students in the baccalaureate program will take the same 42-hour core of business and economics courses required of all business majors. It is an application-oriented course of study in computer systems which is designed specifically for the business and administrative sector.

According to Dr. Kenneth B. Settle, chairman of the ISUE Division of Business, computer information systems represent the largest application area of computing. The new Computer Information Systems program at ISUE is geared to educating developers of information systems utilizing computers in a business or administrative environment.

"It is clear that over the next decade the greatest demand in data processing/information systems field will be for persons who have computer know-how supported by a solid understanding of the business framework for computer applications," says Dr. Settle.

"Our new Computer Information Systems bachelor's degree program will provide high quality education designed to meet this growing need for developers and managers of computer-based information systems," says the business chairman.

The ISUE program is career oriented, and students will receive a rigorous background in the applications area, training them as programmer/analysts for the business sector. With experience, graduates may advance along several career paths leading to positions in systems analysis, systems design, programming and systems project leadership, and systems management.

Prior to the approval of this program, ISUE offered only an Associate of Science in Computer Information Systems (formerly Associate of Science in Data Processing). Graduates of that program interested in advanced study will be able to enroll in the CIS program to upgrade the associate degree to a baccalaureate degree.

SERIES HOSTS BOSTON GLOBE EDITOR

Thomas Winship, editor of *The Boston Globe*, spoke on the ISUE campus February 8 in the first of an annual Distinguished Editor Series. The new series, sponsored by *The Sunday Courier and Press* in cooperation with ISUE and UE, has been established to enhance the education of communications students.

In a two-hour session at ISUE attended by more than 100 students, faculty and interested persons from the community, Winship talked about numerous issues ranging from the *Globe's* controversial publication of the Pentagon Papers, to fellow-Bostonian Ted Kennedy's political aspirations, to the future of newspapers in an increasingly-electronic world. The *Globe's* editor of 18 years intently paced the floor while thoughtfully fielding the unending series of questions. Reflecting on the major changes in the newspaper business, Winship predicted that page-long stock market quotations and listings of community calendar items will someday leave newspapers and become accessible electronically. He also said newspapers need to become more creative in their coverage of civic concerns if they are to meet the challenge of the electronic media. He pointed to the new science section of

the *New York Times* as an example of journalistic creativity and predicted a trend in science reporting will begin among the larger newspapers because the computer age will demand it. Winship is impressed with the national newspaper *USA Today* and its "bright graphics and clear writing".

And how can newspapers improve themselves? Winship wants to see newspapers become more involved with their readers. He wants to see better, more accurate writing with less hype and sensationalism. He is shocked by the industry's record in minority hiring, saying it affects the newspaper's ability to adequately cover societies' concerns. Winship feels that the newspaper's greatest responsibility and challenge is to help its community survive economically, socially, and culturally. He thinks this can be achieved by helping communities establish priorities, simplifying complex issues affecting the community, and providing fair and accurate reporting of the highest caliber to keep the community informed.

A day filled with activities was scheduled for the editor. In addition to his meeting with ISUE students, there was a luncheon at ISUE, as well as a student session, dinner, and public forum at UE.

STUDENTS NAMED TO '82-'83 WHO'S WHO

The 1982-83 edition of *Who's Who Among Students in American Universities and Colleges* will carry the names of twelve students from ISUE who have been selected as being among the country's most outstanding campus leaders.

Those named are Terence A. Alvey, Karen S. Begle, Ronald R. Bonger, Donna Jean Cook, Kathleen E. Craney, Ronda L. Cutteridge, Darrell G. Fritz, Emily J. Gartner, Gregory T. Hall, John Humpert, Martin R. Miracle, and Tamara J. Wheaton.

Selection was based on academic achievement, community service, extracurricular activities leadership, and future potential.

FOUNDATION ADDS NINE BOARD MEMBERS, ELECTS OFFICERS

Nine new members have been appointed to the Indiana State University Evansville Foundation Board for 1982-83. They are Steven E. Chancellor, Joseph Patrick Coslett, Herbert A. Cox, Bettie G. Engelbrecht, Donald R. Hazeltine, L. Bernard Powers, Aline Nunn Renner, James A. Sanders, and Bernard E. Schnacke.

Steven E. Chancellor, president of Black Beauty Coal Company, Inc., is a business administration graduate from the University of Evansville. He serves as director for the Indiana Coal Council and the Indiana Coal Mining Institute. He has held numerous offices with Ducks Unlimited, Inc.

Joseph Patrick Coslett, owner of Promotional Associates, Inc., holds a bachelor of business administration from the University of Cincinnati. He is active in the Metropolitan Evansville

Chamber of Commerce, United Way of Southwestern Indiana, Evansville Vanderburgh Airport Authority District, and the Kennel Club.

Herbert A. Cox, chairman of the Board of Farmers Bank & Trust Company, is a business administration graduate from Indiana University. He is the commander of the American Legion Post in Poseyville and active in the Poseyville Chamber of Commerce.

Bettie G. Engelbrecht, co-owner of South Central Broadcasting Corporation, instituted and is in charge of the public service program for WIKY Radio. Mrs. Engelbrecht is a former teacher and recreation director for the Evansville-Vanderburgh School Corporation. She is active with non-profit organizations in fund-raising.

Donald R. Hazeltine is the president of Southern Indiana Operating

Company, Inc. He is a director of Morris Securities LTD, Chicago, Illinois, and of the Old National Bank in Evansville.

L. Bernard Powers is a retired photofinisher. He is a member of the West Side Professional and Business Association, the West Side Nut Club and the ISUE Varsity Club. He is a charter member of the Evansville Central Lions Club.

Aline Nunn Renner is retired treasurer of Nunn Milling Company, Inc. She is active in social and philanthropic endeavors such as the Vanderburgh Chapter of the Daughters of the American Revolution, Evansville Museum, Gamma Beta Chapter of the Sigma Alpha sorority, and the Aldersgate Methodist Church.

James A. Sanders earned his bachelor of science degree in business administration and marketing from the University of Evansville and his MBA in business from Indiana State University. He is a teacher and coordinator of marketing and distributive education at North High School. He is active as president of Harmonie Associates, on the Evansville Museum Board, on the Indiana Vocational Technology Advisory Committee in Evansville, and the Indiana State University Advisory Committee for Vocational Education.

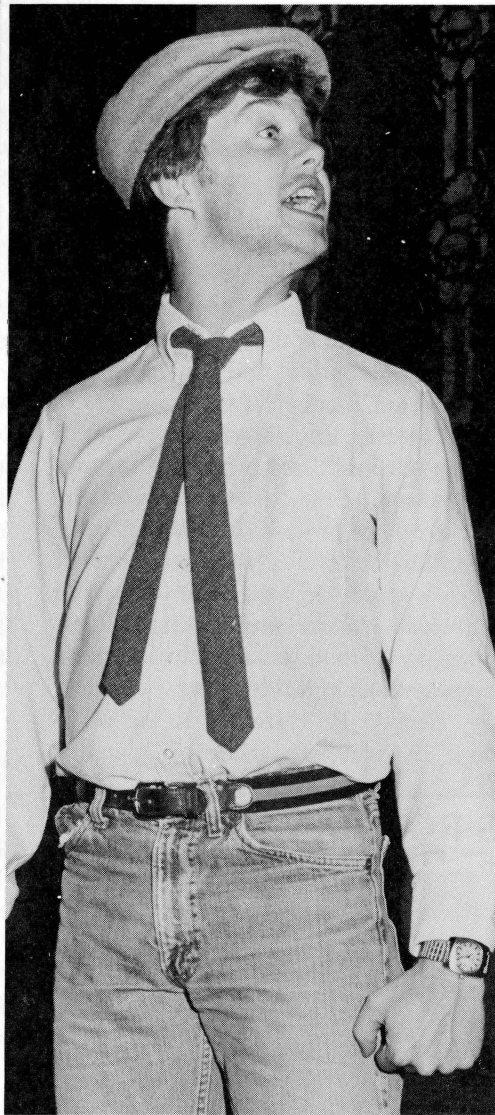
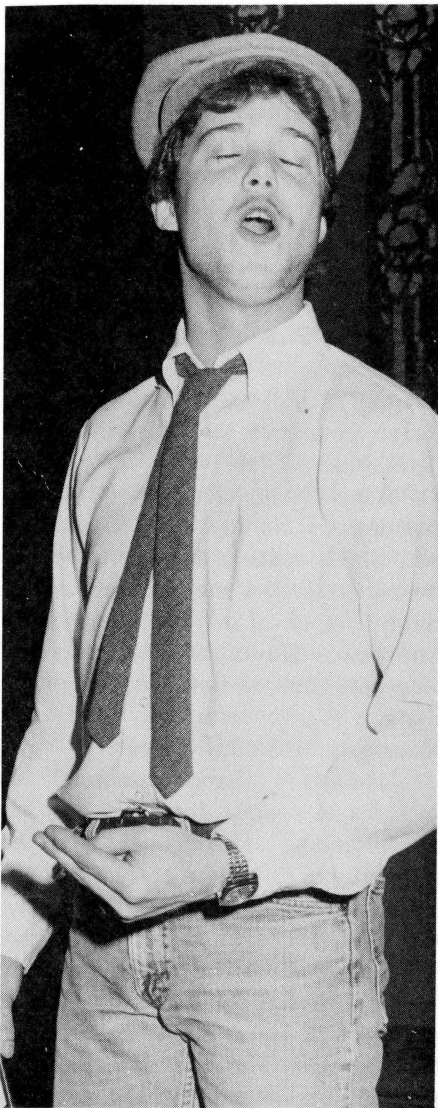
Bernard E. Schnacke, president of North Star Corporation, holds an A.B. and M.B.A. from University of Michigan. In 1982, ISUE conferred the honorary Doctor of Laws degree on him. He is a member of the Board of Directors and past president of Deaconess Hospital. He also is chairman of the Deaconess Development Corporation and active in the Evansville Chamber of Commerce and on the Evansville Philharmonic Board.

Foundation Board officers for 1982-83 are Joseph E. O'Daniel, Chairman of the Board; E. Donald Elliott, President; Frank F. McDonald, Vice President; Irene McDonald, Vice President; William J. Moutoux, Treasurer; Byron C. Wright, Assistant Treasurer; Bettye McCutchan, Secretary; Richard G. Landini, Administrative Advisor Officer; and David L. Rice, Administrative Advisor Officer.

HOMECOMING ROYALTY



At halftime during the ISUE Homecoming basketball game against Lewis University, Karen Wehmeier was named Queen and Kevin Mischler was named King. Karen was sponsored by Delta Zeta sorority and Kevin was sponsored by Sigma Tau Gamma fraternity.



Communications major Mike Nalin tells what he thinks of people's constant struggle to be first in "Line," one of four short plays in ISUE Theatre's One ACTion production.

at 3001 Igleheart Avenue about four miles east of the campus facing Highway 62.

Hubbell deems this a year of "firsts." More one-act plays and an improvisational marathon were added to the theatre lineup this season. The one-acts allow students to produce and direct the shows and offer a respite for the resident stage crafter. During a chilly Friday evening in March, the APO group kept an act together one way or another for twelve nonstop hours of stage antics in what they call a "Freeze-A-Thon."

We'd like to make the Freeze-A-Thon an annual event," claims Hubbell. "It was a fundraising project of APO sponsored by the ISUE Theatre. Members went out and collected pledges for each hour of the marathon. The year before, the Freeze-A-Thon didn't go over so well—probably because we did it a week before finals—but interest in it carried over to this year."

While enjoying a revival of student interest, the theatre program has not been without its struggles. When Hubbell was made director, he set three goals. First, he wanted to refine his inheritance from previous director Ted Wendt, tailoring procedures to introduce students to the lighting operation, the box office, and the publicity duty. He also stressed accountability from the box office, a goal of which he is ever mindful. Folders stuffed with box office records and business charts are a constant reminder of trends in attendance. Improvements and expansion of the physical resources stood as his third goal. "I like the size and intimate nature of the theatre, but I don't like the fact that it is away from the campus. It has good acoustics and sight lines—every seat in the house is a good one. It's a very comfortable place to watch a play," he feels.

A Year of 'Firsts'

Theatre Benefits from New Surge of Student Support

by John Humpert

To its director, the ISUE Theatre is a laboratory, and with a recent redoubling in student interest, Dr. Douglas Hubbell's laboratory has discovered new life. The theatre's performance schedule this year has increased, and so has the pace of students learning all aspects of theatre involvement.

Hubbell reports "a real turnaround" this past year. Alpha Psi Omega, which Hubbell serves as faculty

sponsor, initiated fourteen members this fall and plans to initiate more in the spring. "The support has been incredible," says the director, who first arrived at ISUE three and a half years ago as an adjunct instructor in theatre.

To drum up student interest, he says the theatre department needs "a core group of people who are a little fanatical—willing to take the extra step to find out where the theatre is, drive there for classes, and then come back to campus." The ISUE Theatre is located

Behind the scenes at the theatre, Hubbell has worked toward his goal of improving theatre facilities. "When I arrived at ISUE, we were striking the set left over from the musical *A Funny Thing Happened on the Way to the Forum*. The only tools we had were in an army footlocker—a hammer, a circular saw, and a couple of screwdrivers. For almost two years, the way we put sets together was that everyone backed their cars up in the parking lot, opened their trunks, and what they had was what we used," he relates with amusement.

The lighting and sound system currently are receiving some attention. A windfall for the costume department came in March with the purchase of the inventory of a local resale shop which was going out of business. "For the theatre these items were really great. You could just pull out a dress and say 'Hey, we've got to do *The Inspector Called*, by J. B. Priestly,'" Hubbell said, pleased about the variety and authenticity of the costumes.

But according to Hubbell, selecting the plays for a season of theatre is not that simple. There are bigger considerations like royalties (especially for musicals), the talent available for the semester, how the play will fit with the season, and how appropriate it is in light of local social interests. For example, he explains, "David Rabe's *Sticks and Bones*' is a beautiful script, but deals with the return of the Vietnam Vet. We could do it. A single set interior. There's a slight challenge for costumes. A relatively small cast of six or eight. Some very good scenes and good acting, but I sense the Vietnam issue is now in another stage of development."

There have been few musicals presented at ISUE since they typically require more financial and planning resources than other works, according to Hubbell. In technical areas, the crew usually can synthesize scenes and maintain a high level of quality, but on stage there is a problem finding room to accommodate a group of musicians. The director also points out that musicals in the Evansville community have tradi-

tionally been the domain of Civic Theatre.

Hubbell says he tries to be a good generalist—keeping alive dramatic theatre's relationship to other aspects of literature, to technical theatre, and to research. He likes to think he has eclectic tastes, seeing each theatrical piece as if it were a biological organism with elements common to other works, yet with an inherent individuality. "For better or worse, I am more personable, more informal. I see distance between director and theatre talent leading to a lot of tension which doesn't help the overall cast morale. That can create animosity out of simple misunderstandings," Hubbell says reflectively.

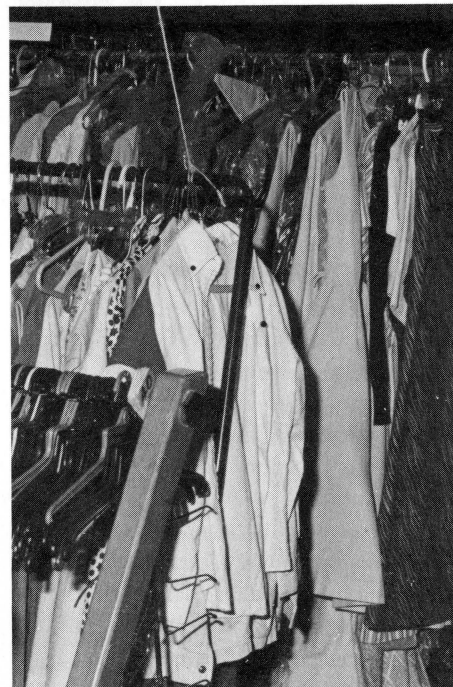
"What doesn't work well in theatre is 'winging it' all the time because the program is run on more than strong feelings or overemphasis of one element of a piece at the expense of others. The theatre down the road is my laboratory and production is a very direct extension of what students learn in the classroom," the theatre director explains.

"In fact, most of the teaching takes place outside the confines of the ninety-minute class meeting," he emphasizes. Asked how theatre fits with his personality and pleasures, he answers, "Schizophrenically. At times, it drives me nuts. And at other times, I couldn't think of anything I'd rather be doing—enjoying—as much as working with students. Theatre people need dedication, confidence, and openmindedness. A director has to keep an open mind and listen to what students have to say," Hubbell feels.

In a friendly spirit, students at the theatre sometimes call Hubbell "Boss". One student came up with the nickname "Dougward", and thus in tribute to their director, students have created the Dougward Award for the one among them who contributes the most to a production.

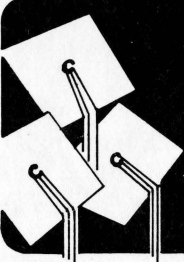
ISUE student Chris Tate recalls that a few years ago students wanted to produce a monthly or bimonthly variety show. When it became obvious that the demands of a regular show were more than they could handle, the students

sought Hubbell's advice. Their resolution was to add one-acts to the beginning of the fall season and to the end of the spring season. Tate recently had his first opportunity to direct with other students in the spring season's *One ACTION* production. While attempting to reconcile a stage layout situation with student colleagues, he said as an aside, "Doug helped the program grow and built student interest when he encouraged members of his acting class to become involved in the theatre."

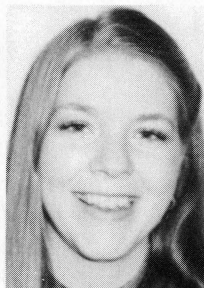


The costume department is happy with the larger wardrobe. The additions came when a local resale shop sold the theatre its inventory.

Hubbell would like to guide the theatre program into a gradual expansion. He cites student scholarships as a first priority in development. No theatre scholarships are now available and most students must share their devotion to theatre with a necessary part-time job. Next in line is installing an outdoor marquee, grading and paving the parking lot, providing easier access for the handicapped, improving the lighting, building a library of resources such as play anthologies and craft books, buying a sewing machine, and perhaps offering a musical.



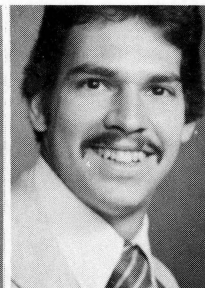
GRADUATE Roundup



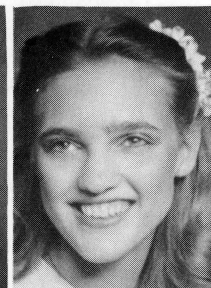
Weinzapfel '78



Aleksiak '81



Brown '82



Hollinden '82

Class of 1975

Carolyn E. Farris, an elementary education graduate, and Willie Ford were married December 18, 1982.

Neil Thomas, English graduate, has been appointed chief deputy prosecutor for Vanderburgh County.

Class of 1976

Steve Craven, a social science graduate, has joined WGBF Radio as an account executive in the station's advertising sales department. Before joining WGBF, Craven held an account executive position with WEHT television station.

Psychology graduate **Bradley G. John** was recently elected president of the Town Center Mall Merchants Association for the coming year.

Lana Rae Rademacher is the restaurant manager of F's Steak House. She was named one of the Outstanding Young Women of America for 1982. Lana majored in chemistry at ISUE.

Class of 1977

Accounting graduate **Thomas R. Farrar** has become associated with The Abercrombie Company in Houston, Texas. He is active in real estate development and tax shelters, personal financial planning and tax planning. He received a Master of Business Administration degree from Indiana University in 1981.

Tom Heckman, elementary education, married Alice Grondahl in March. Tom teaches at Marrs Elementary School and Alice is employed in the ISUE Security Office.

Dr. Thomas J. Koewler, biology, married Marilee A. Hankins in February. Dr. Koewler is a resident physician in family practice at St. Michael's Hospital in Milwaukee, Wisconsin.

Michael Resing, a mathematics graduate, has been promoted to branch manager at Peoples Bank in Evansville.

Thomas E. Williams recently married Nancy Lee DeVore. A communications graduate, Thomas is a sales specialist at KWKH Radio in Shreveport, Louisiana.

Class of 1978

Brian L. Devers, a general business graduate, is employed in the computer department of Chemicals, Fertilizers and Services in Vincennes.

Art graduate **Connie A. Weinzapfel** has been promoted to coordinator of the Chicago International Art Exposition. The world-class art show will be held May 19-24 at Navy Pier. Ms. Weinzapfel will serve as liaison with more than 120 U.S. and European art galleries which have been selected as exhibitors for the upcoming show. She formerly was director of publications for the Exhibition.

Class of 1979

Myra Shutz Parrott, a marketing graduate, is director of Happy Times Nursery School and Day Care Center in Princeton.

Class of 1980

General business graduate **Keith Grossman** is employed as an account executive for Smith Barney Harris

Upham Company in Evansville. He recently passed the New York Stock Exchange National Association of Security Dealers registered representative examination.

Mary Lou Myers, a dental laboratory technology graduate, has married Keith Peyton. She is a dental lab technologist in Madisonville, Kentucky.

Harold E. Tepoch, Jr., a communications graduate, joined the staff of the Posey Circuit Court in Mt. Vernon as court administrator and deputy probation officer. Harold and his wife, Amy, are owners of Tepoch's Market in Wadesville.

Thomas Uebelhor, a marketing graduate, and Jennifer Paxson were married April 23. He is a sales representative for Computerland in Evansville.

Class of 1981

Nancy S. Aleksiak, a general business graduate, recently married Robert Pigott II.

In January, dental assisting graduate **Terri Lynn Benton** and Frederick Michael Frisse IV were married.

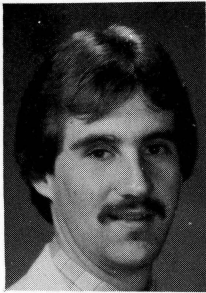
Elementary education graduate **Brian Hester** is a salesman for Farm Bureau Insurance in Evansville.

General business graduate **Richard F. Higgins** is the district executive for the Lincoln Trails District of the Buffalo Trace Council, Boy Scouts of America.

Deborah M. Paul, a data processing technology graduate, is working toward



Schutte '82



Schutz '82

a Bachelor of Science degree in computer science at Indiana State University, Terre Haute.

Nancy E. Refett, an accounting graduate, and **Steven L. Dixon** were married March 1.

Class of 1982

Marketing graduate **Joan Robin Bowles** married **John Dennis Nelligan** in March.

John Brown, a marketing graduate, is a salesman for Farm Bureau Insurance in Evansville.

Margaret A. Hollinden, a mathematics graduate, accepted a position in computer operations with CrediThrift in Evansville.

Accounting graduate **Michael Kelley** is employed by Sanders and Company in Evansville.

Management graduate **Kent Kern** is a loan representative for Colwell Financial Services in Phoenix, Arizona.

Greg Martyn, a communications graduate, is a production assistant with WNIN Television station.

Business education graduate **Mary Notter** is a teacher with Lockyear Business College.

Mark Pate, a communications graduate, is the director of catering for American Food Management on the ISUE campus.

John L. Schutz has been employed as a landman for Mid-Central Land Ser-

vices. John was a general business major while attending ISUE.

Elementary education graduate **Elizabeth J. Schutte** is a teacher in Haubstadt.

Julie Ann Shourds, accounting graduate, and **Terry Scott Culiver**, a class of 1983 finance major, were married in January. Julie is an employee of Kotis, Nass & Company and Terry is employed by CrediThrift Financial, Inc.

English graduate **Joe Stuteville** has been named news editor of the *Mount Vernon Democrat*. Stuteville received a third-place award in December 1982 from the Better Newspaper Contest of the Hoosier State Press Association. His winning effort was a three-part series on drunk driving.

Darlene J. Swope, a graduate in health services, is an employee of the Institute of Health Management in St. Louis and has been contracted to provide health care and counseling for employees and their families at Peabody Coal Camp Complex in Morganfield, Kentucky.

Communications graduate **Theresa Wolf** is an employee of WEHT television station. Theresa hosts the Women's Corner news segment which airs at noon daily.

Class of 1983

Kathy George, an accounting graduate, is a staff accountant with George S. Olive and Company in Evansville.

Accounting graduate **Donald Horst-ketter** has accepted a position as staff accountant with Ernst and Whinney in Indianapolis. He will begin in August.

Jill McGregor, an accounting graduate, has accepted a position with George S. Olive and Company in Indianapolis as a staff accountant.

Secondary education graduate **Janet E. Michel** is a chemistry and math teacher for the East Gibson School Corporation in Oakland City.

Accounting major **Marty Miracle** has accepted a position as staff accountant with Ernst and Whinney in Indianapolis. He will begin his work in August.

Phu H. Tran, a senior majoring in electrical engineering technology, has been accepted as a graduate student in electrical engineering at the Pennsylvania State University.

ALUMNI ADDITIONS

Dr. James R. and Ruth E. Zimmerman Baize, a son, John Robert.

Richard C. and Carliss A. Becker, a son, Adam Richard.

Mr. and Mrs. Richard Z. Bennitt, a son, Adam Richard.

Mr. and Mrs. Larry W. Bohleber, a daughter, Vanessa Marie.

Timothy and Vicky L. Burton Bridges, a daughter, Ashley Fallen.

Mr. and Mrs. Brian L. Devers, a son, Bradford Levan.

James F. and Carol J. Droege, a daughter, Christine Carol.

Mr. and Mrs. Ronald R. Duckworth, a son, Andrew Jason.

Mr. and Mrs. Steven Craig Duke, a son, Benjamin Eric.

Kenneth E. and Gayle Buraker Eaton, a son, Kenneth Eldon III.

Dr. and Mrs. Steven K. Elliott, a son, Andrew Steven.

Michael A. and Ann Seaman Flittner, a son, Andrew Michael.

Ray and Kathy Will Funke, a daughter, Elizabeth Ray.

Jim and Rebecca M. Weber Hadley, a son, Jason David.

Mr. and Mrs. Larry J. Horn, a son, Matthew James.

Mr. and Mrs. Rick J. Kissel, a daughter, Lindsey Nichol.

Groce and Vera A. Chanley Marshall, a son, Matthew Groce.

Christopher A. and Loretta Moers, a son, Christopher Travis.

Anthony D. and Cynthia M. Fleck Richardt, a daughter, Kathryn Olivia.

Mr. and Mrs. Alan D. Rodgers, a son, Jeffrey Alan.

Terry and Angie Lodato Stumpf, a son, Kenneth Patrick.

Brian and Peggy L. Gray Terrell, a son, Dustin Barclay.

Joel A. and Linda L. West, a son, Joshua Anthony.

Joseph T. and Susan Fulkerson Wright, a son, Joseph Timothy II.

CAROLE RUST ASSUMES NEW ROLE AT DEACONESS

Carole Rust, Class of 1977, has been named director of planning at Deaconess Hospital of Evansville. She formerly was administrative director for the hospital's Office of Oncology, a position she has held since 1981.

In her new capacity, Carole coordinates planning, market research and services development in conjunction with identifying and developing long- and short-range needs and objectives of the hospital. This includes liaison responsibilities with community, state, and national health planning organizations. She retains administrative responsibilities for the oncology program.

Before joining Deaconess, Carole was executive director of the Vanderburgh County Medical Society from 1970-1980 and then served as executive director of the Vanderburgh Foundation for Medical Care.

The hospital administrator is active in several health care organizations. She is chairman of the by-laws committee of the nationally known Association of Community Cancer Centers, vice president of Ohio Valley Hospice and secretary of the Posey County Emergency Medical Services Council. Carole also is on the board of directors of the Southern Indiana Health Systems Agency and of the Vanderburgh County Cancer Society and is a member of the American Medical Writers Association.

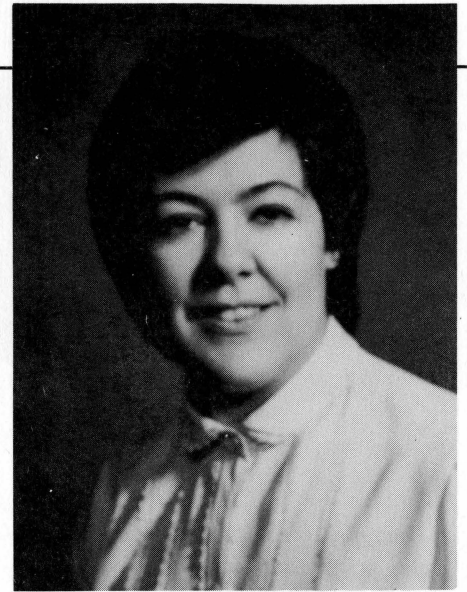


Carole Rust

OUTSTANDING YOUNG WOMAN AWARD GOES TO GRADUATE

Glenda LaVerne Miller, Class of 1975, instructor in dental assisting at Indiana State University Evansville, has been named Indiana's Outstanding Young Woman of 1982.

Ms. Miller has several years' experience as a chairside and reception dental assistant. She received her training at ISUE and is currently a candidate for a Bachelor of Science degree in health services. She is a member of the American Dental Assistant Association and was a delegate to the national convention in 1977 and 1982. She has held many leadership positions in the Indiana Dental Assistant Association, as well as in the Evansville Dental Assistant Society. Her humanitarian interests include the Muscular Dystrophy Association Telethon and working as a new member of Infa-Life Seekers. Many of her works have been published, and she



Glenda Miller

has won several awards in the Indiana Dental Assistant Association.

Ms. Miller's biography and record of accomplishments appear in the 1982 awards volume *Outstanding Young Women of America*. The Outstanding Young Women of America program, sponsored annually by leaders of women's organizations, honors young women between the ages of 21 and 36 for civic and professional achievement.

OUT OF CANNAN ENJOYS POSITIVE REVIEWS

Keith Rice, a 1972 political science graduate of Indiana State University Evansville, is the author of *Out of Canaan*, a novel that was published March 31 by Charles Scribner's Sons of New York. According to advanced reviews, the novel reflects an emerging talent of great potential.

Out of Canaan is about an afternoon in 1963 when some grandparents tell their grandson a story out of their own family history that goes back to 1890. According to *Publishers Weekly*, the pieces of a family puzzle are arranged and reassembled to satisfy long-standing unasked questions. Why did Daliah Faye Brownlee Mead desert her husband, John Burley, leaving him and their eight children on a dirt-poor Kentucky farm? More important, why did she return within a year, with a ninth child, and a carpetbag of gaudy chattels she enjoyed as mistress of a Florida millionaire? Generations later, the grandson of that ninth child, Otho, who

still lives on the Kentucky soil, is given a significant letter in Daliah's hand and comes to an acceptance of his tangled, uncertain lineage.

Publishers Weekly says that this first novel of Rice's is imbued with the heritage of southern letters. The reader gets an intensely studied picture of life, times, dress and speech of the east central Kentucky region. "Certainly, this novel is far above the level of most first novels, and indeed superior to that of many writers' subsequent efforts," stated Bill Greer of the *Sunday Courier and Press*.

Keith has been an accountant for New-Kro Oil Company for six years. He presently is working on a book about the Evansville area during World War II and plans to write a sequel to *Out of Canaan*. This first novel may be found in area bookstores. An autograph party for the author is set for Saturday, May 14 at B. Dalton bookstore in Evansville's Eastland Mall.

PLACEMENT SERVICES COME TOGETHER, DEVELOPMENT AND ALUMNI OFFICES MERGE

In an effort to centralize all aspects of student employment and alumni placement, several services have been merged. The Office of Placement now will serve both students and graduates at a central location for all placement services including on-campus student employment, off-campus employment in both full- and part-time jobs, and for co-op placement.

Doug Claybourn, Class of 1977, has been named director of placement. He formerly was coordinator of cooperative professional practices. His new position entails working with the ISUE Personnel Office and Financial Aids Office coordinating student employment in addition to seeking opportunities for ISUE graduates. The Placement Office is located in the University Center. The phone number is 812/464-1865.

Claybourn says great strides have been made in informing local employers about ISUE's pool of employees and that the total service concept is providing continuity of contact with those

employers. "Placement for full-time positions for graduates is lagging behind the peak year, but we expect it to improve, not just because of the economy, but because the new system gives us more opportunities to discover openings for our graduates," he says. Claybourn is bringing old files up to date, revamping forms, and instituting new procedures. Graduates with active files are being asked to assist in getting their files current and will be asked to re-apply each year.

Reflecting the growth in the Alumni Association and its role in University development activities, the Office of Alumni Affairs has been merged with the Development Office. Ralph Kent, Class of 1971, who has directed alumni affairs and placement in the past, is director of alumni affairs. He will be assisting in fundraising activities for the campus in addition to overseeing alumni activities. The Alumni Office has moved to the Administration Building, Room 111. The new phone number is 812/464-1924.

Alumni Information Card

Clip and Mail to Office of Alumni Affairs,
Indiana State University Evansville, Box 6227, Evansville, IN 47712

Name _____

Address _____

City _____ State _____ Zip _____

Present Position (list title and date named to position) _____

Recent personal information (marriages, births, awards, promotions, etc.) _____

ISUE GRADUATES EARN MASTERS' DEGREES

Thirteen students who earned bachelors' degrees at Indiana State University Evansville were awarded masters' degrees by the University of Evansville in 1982. The following are recipients:

Pamela Sue Miller Boutaugh, Class of 1979, Master of Science in Counseling

Carol Schneider Koewler, Class of 1976, Master of Arts in Education

Joseph Michael Mason, Class of 1977, Master of Business Administration

Carlita Coyle Mayne, Class of 1972, Master of Arts in Education

Richard Michael McKasson, Class of 1975, Master of Arts in Continuing Studies

Daniel Lee Schenk, Class of 1976, Master of Business Administration

Roger Eugene Sills, Class of 1977, Master of Arts in Education

Linda Schmitt Stilwell, Class of 1976, Master of Arts in Education

Angela Lodato Stumpf, Class of 1975, Master of Science in Counseling

Cathy J. Suhrheinrich, Class of 1980, Master of Science in Counseling

Robert Edward West, Class of 1978, Master of Business Administration

Christine Detjen Westendorf, Class of 1978, Master of Science in Psychology

Joyce A. Zak, Class of 1979, Master of Arts in Continuing Studies

MORE CHEMISTRY GRADS ENTER TOP PROGRAMS

Class of 1981 classmates and chemistry majors Randy Blanton and Deborah Main are enrolled in doctoral programs at institutions whose chemistry programs rank among the top eleven in the country. Randy is a student at Texas A & M University and Debbie is studying at University of Illinois, Champaign-Urbana. The last issue of *8600 University Boulevard* carried a story about other graduates in similar programs; Debbie and Randy were inadvertently omitted from the story.

Message from the Placement Office

Dear Alum:

Greetings from your alma mater! We at ISUE are in the process of creating an exciting new service to our students — The Alumni Counseling Board. Because of the success you have experienced since your graduation, we feel you can be instrumental in making this service a reality. We are NOT asking for your money, we are only asking for a few minutes of your time, to meet and talk with students seeking information about a career in your field. In brief, the program would be set up like this: Students would meet with working alumni on a one-to-one basis to learn about their fields of work, and more importantly, their individual jobs. The format would be simple and low key. Students would contact alumni counselors and set up appointments. Hopefully, alumni members would not be contacted for more than four or five appointments per year. Ideally, the meetings would be held at their place of work.

The student is usually familiar with the description of the graduate's job, but not that familiar with the various day-to-day activities. Students need to know the frustrations as well as the satisfactions of various careers. Working conditions, contact with people, hours required, duties and rewards — all aspects of the job are important to know. The nitty-gritty is every bit as important as the big picture, and no textbook can relay the information you have gained in your job.

Please accept our invitation to participate as an alumni counselor for ISUE students. You will be making a contribution that money cannot buy. Thank you in advance, we hope to hear from you soon!

Sincerely,

Douglas F. Claybourn
Director of Placement

Address Correction Requested

INDIANA STATE UNIVERSITY EVANSVILLE
8600 University Boulevard
Evansville, Indiana 47712

Non-profit Organization
U. S. Postage
PAID
Evansville, IN
Permit No. 1675

TO:

MRS GINA WALKER
RR 1 BOX 203
ELBERFELD IN 47613