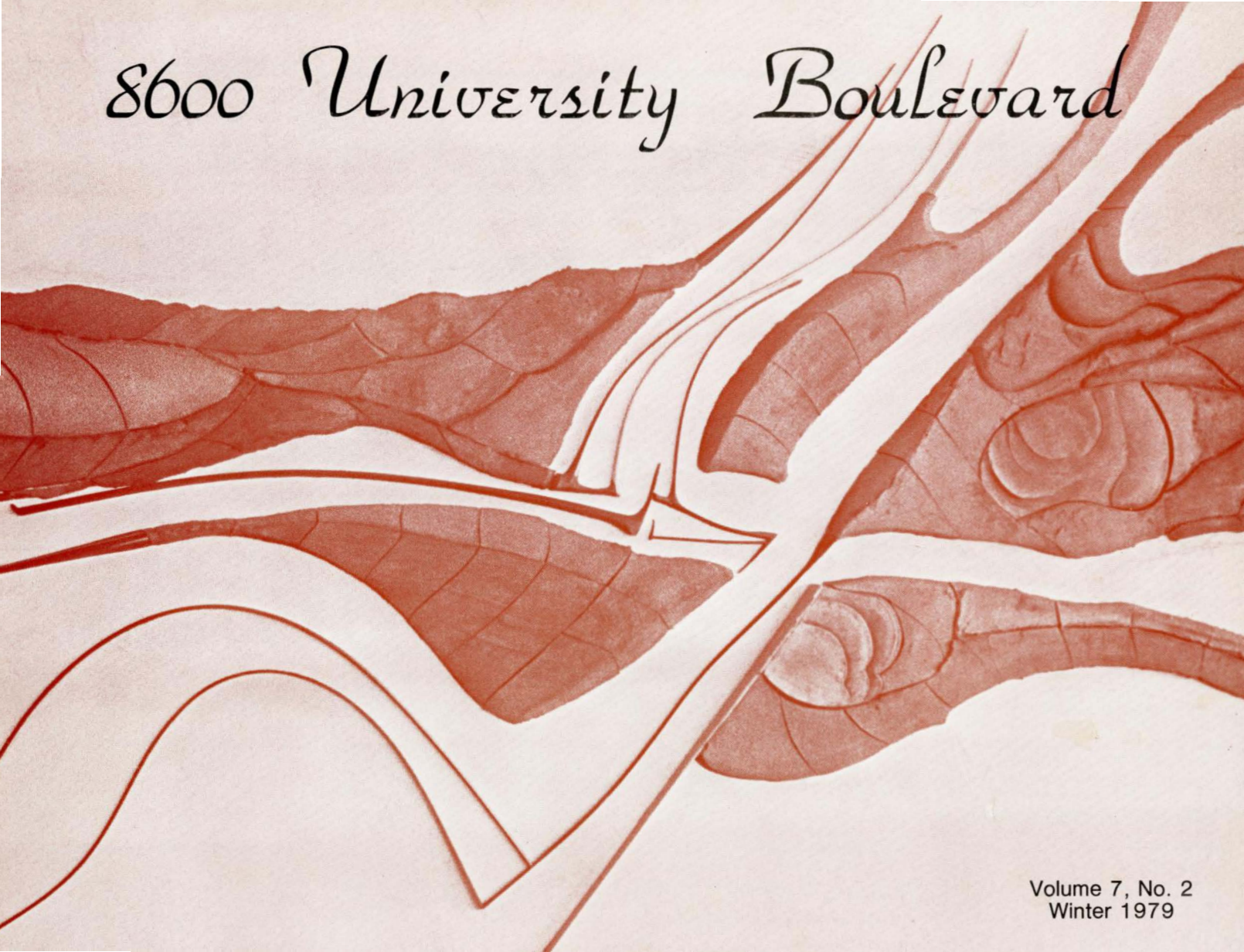


8600 University Boulevard



Volume 7, No. 2
Winter 1979

ON THE COVER

Though it may appear to be an attractive abstract design, the photograph on the cover is actually a new wall sculpture which has been installed in the ISUE University Center Dining Room. Normally, living plants and students seated at tables obscure part of the wall, but we had ISUE student Brad Whipple put his photographic skills to work to capture the massive work for you. You can read more about artist Dan Engelke's earth sculpture on page three.

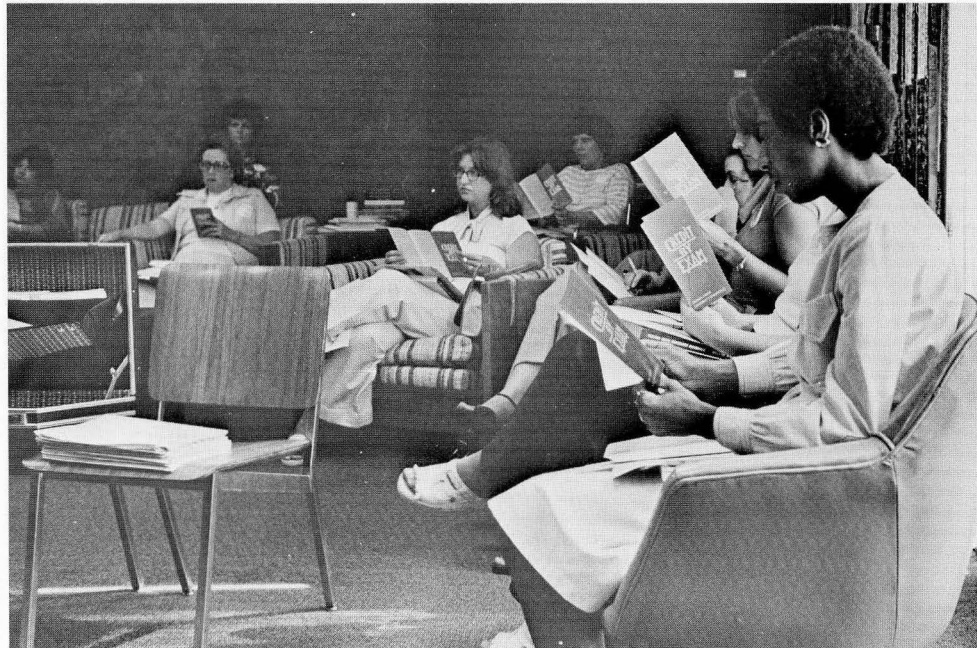
ISU OFFERS AGENCY COUNSELING MASTERS IN EVANSVILLE

Persons in Southwestern Indiana interested in obtaining a Master's degree in Agency Counseling will now be able to take all the courses in Evansville through a program offered by Indiana State University.

Intended primarily for persons who wish to engage in counseling in non-school settings, the program is of interest to persons employed in counseling positions in social service agencies or correctional programs. The program does not meet the requirements for the Indiana School Counselor Certification, although some courses will apply to the certification pattern.

Two courses are being taught in Evansville this spring semester, and it is anticipated that additional courses will be available in the summer session.

This is the third graduate program offered by ISU on the Evansville campus. The Master's degree program in Public Administration and the Master's degree program in Education have been underway for more than a year. Additional information may be obtained by Dr. Robert Mays at ISUE who is coordinator of graduate programs on the Evansville campus.



Women considering beginning or resuming college study attended a free seminar at ISUE entitled "Everything Women Have Wanted to Know About Going To College (but didn't know who to ask!)" Presentations covered such topics as admission requirements, the availability of financial aid, academic counseling, job opportunities, and obtaining college credit through examination. According to Sylvia Weinzapfel, Coordinator of Programs for Women, the annual program is intended to serve women students age 25 and over, who now compose 18% of ISUE's student body.

8600 UNIVERSITY BOULEVARD

8600 University Boulevard is published three times annually by the Office of the President, Indiana State University Evansville, Evansville, Indiana 47712. Please send form 3579 to the Office of the President, ISUE, 8600 University Boulevard, Evansville, IN 47712.

Volume 7, No. 2
Winter 1979

Readers are invited to respond to content in the form of letters signed and addressed to the editor.

EDITOR

Sherianne Standley

CONTRIBUTING EDITORS

Ann Humphrey

Ralph Kent

ARTICLES

Julie Hinderliter

Mary Lou Maxwell

Mary Lue Russler

Aided by Foundation Grant...

Engelke Creates Earth Sculpture



By Mary Lue Russler

More than 150 pieces of terracotta clay are used in a new wall sculpture created by Daniel Engelke, former ISUE Associate Professor of Art. The artwork is a faculty research and development project of the Humanities Division funded by contributions received by the ISUE Foundation Art Fund.

Engelke was chosen to design, construct and install a wall sculpture and was awarded a grant for construction supplies

and expenses.

Engelke began the project in June 1977. He selected a wall in the University dining room for the location of the sculpture and then began a pencil-sketch of his design that would highlight the wall and the surrounding area. He laid out the design in full scale on a classroom floor, then shaped large pieces of clay to create the overall three-dimensional design. The underneath side of each piece was

scooped out and marked. They were then fired, stained and readied to be glued to the wall.

To prepare the dining room wall for the sculpture, part of the drywall was removed and plywood sheets were bolted to the wall to support the clay pieces. The artist secured the pieces one by one to the wall using a special glue and supporting pegs.

Engelke spent many hours working on what he calls, "the largest artwork I ever created." He is pleased about it even though it took much longer and cost much more than he estimated.

Engelke feels fortunate that he was awarded the Foundation grant because it gave him an opportunity to use his skills and to construct a permanent art piece for the University. Engelke says, "the project gives me a certain confidence to go on to even larger works." The artist says that the overall feeling he intended to bring forth was "land and land formation . . . to bring the earth indoors." And it can be clearly seen in the line, form and texture of this unique work of art. The variegated earthtone colors blend well with the decor of the dining area.

Engelke adds, "I had complete freedom in carrying out the project in every detail. I could choose my own style and materials and therefore present what I liked best. It is my own complete statement."

Dan Engelke has also been very active in the Evansville community. An example of his work is displayed in the Emge Realty Office. He was commissioned by Emge to create a series of ceramic wall reliefs

that would depict a variety of styles and concepts in the realty business. The reliefs represent various house styles such as Cape Cod, ranch, and Tudor, as well as commercial buildings.

Emge came to Engelke because a unique problem in the Emge office design made decorating the office walls with regular hanging artwork impossible. The sloping mansard roof of the building created a slanted wall inside the building. Engelke was commissioned to create artwork that would be appropriate for the unusually-shaped walls.

Unlike the clay sculpture he created for the ISUE dining room, the Emge sculptures were made out of stoneware, and each relief is surrounded by tile to reflect the style of that building. For example, the ranch style house is surrounded by simple horizontal tiles while the Tudor, a more elaborate structure, is completed with a more deliberate tile design.

The Emge wall reliefs took about six months to complete. In addition to the challenge of creating a work especially suited to the sloped wall, the sculptures were also Engelke's first attempt at using a combination of glazes that would give an earthy quality to the reliefs and also make use of intense colors.

Engelke feels that being approached by Emge Realty to do this work is an example of the positive attitude of the Evansville community toward the arts. He finds Evansville's private sector very supportive of the arts and says this is reflected in other public art displays throughout the city.

ON CAMPUS

ENGINEERING TECHNOLOGY DEGREE PROGRAM APPROVED

The Indiana Commission for Higher Education has approved a baccalaureate degree program in engineering technology at ISUE. The approval was granted at a meeting of the Commission in Indianapolis on December 8, 1978.

ISUE has been offering a bachelor's degree in mining engineering technology since approval was given for that program in 1977. With the Commission's action, ISUE students will also be able to receive the Bachelor of Science degree in engineering technology with options in civil engineering technology, electrical engi-

neering technology, mechanical engineering technology or industrial supervision.

Many of the third year courses in engineering technology have been offered this year in the mining engineering technology program. The new baccalaureate degree program will become effective in the fall semester, 1979 with students currently enrolled in engineering technology courses eligible to begin either the third or fourth year of study at that time.

ISUE President David L. Rice said the engineering technology program has been developed with the advice of the

ISUE Industrial Advisory Board which identified local industrial needs. "When the community leaders of Evansville studied the problems of the regional economy in the late 1950s and early 1960s, they saw the need to strengthen the scientific and manpower bases of the community as a necessary component to any regional development. This program is in response to those needs, is in tune with current and future needs, and should have an important impact on the economy of Southwestern Indiana," he said.

ISUE Receives Grant for Pollution Education Project

Indiana State University Evansville, through its office of continuing education, has received a grant in the amount of \$11,481 from the Indiana Commission for Higher Education to conduct a community outreach program entitled "Pollution Education Update." The grant is made possible through Title I of the Higher Education Act of 1965.

The project, aimed at educating the public about pollution problems and alternative solutions, began in February and will run through July, 1979. The topic was chosen, according to the grant proposal, because Southwestern Indiana has experienced a significant industrial and population growth in the past two decades and the growth has been coupled with a growing concern about significant environmental questions in four areas—water, air, coal mining, and nuclear energy.

According to Sylvia Weinzapfel, project director, "This project is designed to ad-

dress the issue of community understanding of environmental problems and to suggest ways in which individuals can contribute to the problem-solving process. There is a general lack of understanding about the technical aspects of the problems, their origins, and the magnitude of possible health effects; the alternative solutions to the problems; and participation of the individual citizen in the problem-solving and policy-making processes."

Three methods will be used to communicate with residents of 8 Southwestern Indiana counties. Six half-hour television programs will be broadcast on Channel 9 public television; a series of community forums will be held in Evansville and Rockport; and a pollution resource guide, simplifying technical and scientific information about pollution, will be developed.

The office of continuing education will be assisted in the program by ISUE facul-

ty members from the divisions of science and mathematics and engineering technology who will act as consultants and discussion leaders.

Tom Zeller, instructor of geology and physics, will serve as technical advisor for the grant project. Zeller is well-known throughout the tri-state as an expert on pollution issues and alternatives.

Local agencies cooperating in the program are the Evansville Environmental Protection Agency, the Evansville Audubon Society, the Citizens Action Coalition, the Metropolitan Evansville Chamber of Commerce, the Regional Council of Governments, the Nuclear Waste Action Committee and the Southwestern Indiana League of Women Voters.

A brochure detailing broadcast dates and meeting times may be obtained from the office of continuing education.

Education Programs Re-Accredited

At its October meeting in Nashville, Tennessee, the National Council for Accreditation of Teacher Education (NCATE) voted to renew accreditation of Indiana State University Evansville's baccalaureate degree programs to prepare elementary and secondary teachers. The re-accreditation also includes a K-12 program in art education.

This action of NCATE extends accreditation of these programs until September 1, 1985. The Council, in extending the accreditation, cited several strengths in the ISUE program including the quality of instruction, availability of faculty to students, and conditions of faculty service.

"The small size and intimate nature of the program promotes continuous communication. Faculty are available and demonstrate interests in the needs and concerns of students," the report continued.

The report also lauded the "excellent" conditions of faculty service, and said, "The institution regularly provides for sabbatical leaves, supports faculty research and maintains a quality instructional program."

Dr. Robert Reid, Vice President for Academic Affairs at ISUE, commented on the renewal of accreditation, saying, "The preparation of teachers is an important component of the educational mission of ISUE. NCATE is the national organization most concerned with the professional integrity of teacher training. Approval for the maximum seven-year period speaks to the excellence of the University programs in this field, and our faculty and students are to be congratulated for this significant accomplishment."

Alumni to Launch Sixth Annual Telefund

By Julie C. Hinderliter

The ISUE Alumni Association is gearing up for the Sixth Annual Telefund Campaign which will be conducted on the evenings of March 12-15 and on the morning of March 17. During these times, over 75 alumni will gather to call the 3000 graduates of ISUE to ask for their contributions to the Annual Fund. A goal of \$12,000 has been set for the Sixth Annual Telefund, the largest goal set in the history of the fund-raising campaign.

PURPOSES OF THE TELEFUND

Proceeds from the telefund, the Alumni Association's only fund-raiser, are used to support several annual alumni programs and events, including the scholarship program, Homecoming, and the Alumni Banquet; to aid the New Student Orientation Program; to maintain the Alumni Association; and to contribute to special University projects.

Julie C. Hinderliter, a 1974 graduate of ISUE, is a member of the Executive Council of the Alumni Association. Along with John Heard, a 1973 graduate, she is co-chairman of the 1979 Alumni Telefund Campaign.

SCHOLARSHIPS

The Alumni Association will sponsor the seventh annual ISUE Alumni Scholarship program this spring, through which eight students will be selected as recipients of \$250 scholarships. To be eligible for the scholarships, students must be in good standing with the University, must have a minimum grade point average of 3.0, and must have completed between 63 and 93 hours of university credit. The final selection is then based on academic achievement, service to the university and the community, and financial need. (The 1978 ISUE Alumni Association Scholarship recipients are featured on page of this issue.)



HOMECOMING

Homecoming, a traditional college event anticipated by both students and alumni, has given birth to the Alumni Association Post-Game Reception. Hosted immediately after the Homecoming game in the Varsity Club Room at Central Arena, the annual event provides alumni with an opportunity to renew college friendships and acquaintances. The post-game reception will enter its fifth year of tradition in 1979.

please turn the page



ALUMNI BANQUET

The Alumni Banquet, the largest annual event sponsored by the Alumni Association, is hosted each spring in honor of new graduates who are inducted that evening into the Alumni Association. The evening traditionally begins with a reception and banquet at the Executive Inn, followed by the induction ceremony, presentation of special recognition awards, and introduction of the newly-elected Alumni Association officers. Dancing, with music provided by a popular local band, concludes the evening.

YOUR ALUMNI OFFICE

Funds from the telefund also provide general maintenance for the Alumni Association, including alumni supplies, meeting expenses, travel expenses, and professional alumni development, and help underwrite events such as the annual Teacher Education Breakfast and the reception for Indianapolis alumni.

NEW STUDENT ORIENTATION

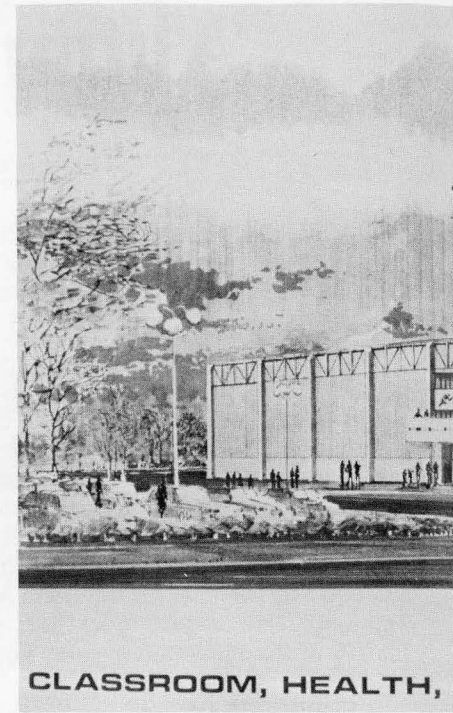
The Alumni Association not only provides services to ISUE's graduates, but also aids new students through the stu-



dent orientation program. Coordinated by the Office of Admissions, the student orientation program is conducted each fall for the benefit of incoming freshmen and transfer students. Several ISUE students are selected to assist with the week's activities, which range from meetings with faculty and tours of the campus to various types of entertainment designed to help the newcomers get better acquainted. These hand-picked ISUE students, called AMIGOS ("Ask Me, I Give Orientation"), are co-sponsored by the Alumni Association. Our donations provide the AMIGOS with sweaters so they are easily recognizable to new students, and fund their travel expenses on recruitment trips to tri-state high schools.

SPECIAL UNIVERSITY PROJECTS

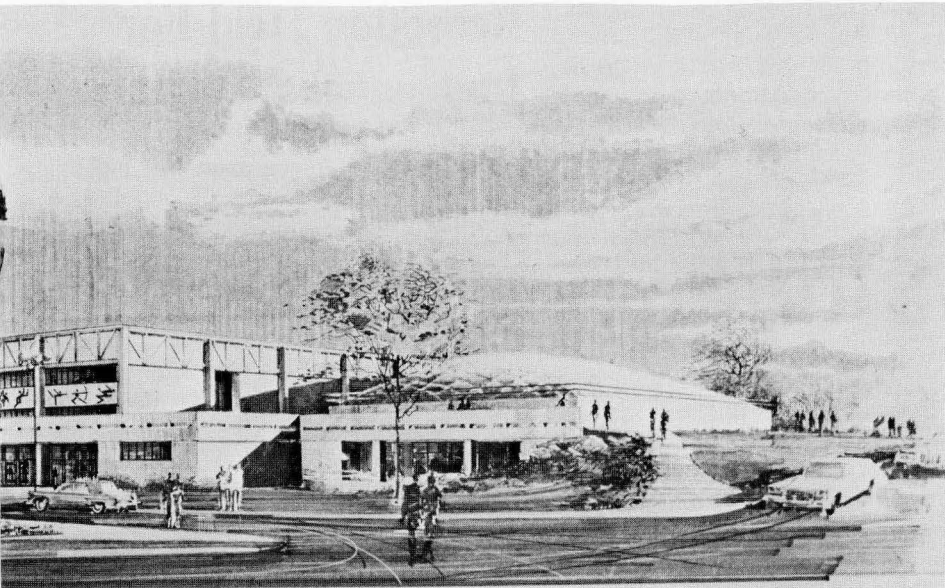
In addition to these ongoing projects and events, the Alumni Association also provides support, whenever possible, to



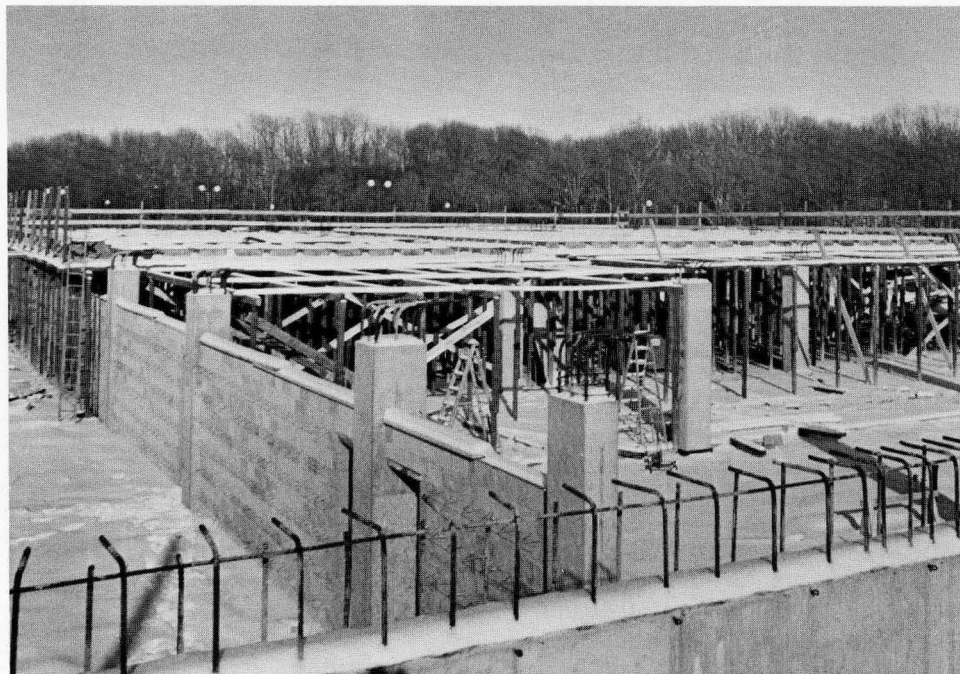
special university projects. Presently, the association has taken on the responsibility of fulfilling a \$25,000 pledge to the Health, Physical Education and Recreation (HPER) Building Campaign. Although obligated to provide only \$2,500 per year for 10 years, the Alumni Association hopes to fulfill the pledge at a rate of \$5,000 per year for five years.

HPER BUILDING

Construction began on the Health, Physical Education and Recreation Building during the summer of 1978. This building is one of five in the original campus plan, and is oriented toward lifetime physical activity. The three-level structure will contain classrooms, a multipurpose activity center, a gymnastics area, faculty offices, a physical therapy area, and a



PHYSICAL EDUCATION & RECREATION BUILDING



swimming pool.

For ISUE students, the HPER Building will mean that all physical education classes will be held on campus rather than at the ISUE Arena, a building six miles away; shower and locker facilities will be available on campus; adequate facilities will be available for recreation and extracurricular physical activity to supplement the students' academic life; intramurals, concerts, and convocations will be a possibility for the entire student body; and the home court for the ISUE Eagles will be on campus and will have a seating capacity of 3,000.

For ISUE alumni and other citizens of the area, the new facility will mean that public recreational facilities will be available when not being used for university classes and events; continuing education courses, such as swimming, racquetball, archery, gymnastics, handball, judo, dance, and a variety of other physical activities and conditioning courses will be offered; and an assembly hall for sporting events, concerts, public forums, and other activities will be available.

The \$3.3 million bonding authorization given by the State for the HPER Building will provide a "bare bones" structure, scheduled for completion by fall, 1980. To fund the underdeveloped features of the building, the Board of Trustees has requested additional funds from the current General Assembly.

The legislative request for additional funds includes amounts needed for enclosing the pool; purchasing equipment; developing office space, storage areas, and outdoor educational areas; interior painting and floor covering; landscaping, and architects' fees.

Regardless of any additional amount which might be received from the State, the spectator seating for the building, costing \$303,920, will not be funded with State appropriations. To develop this

building into a total facility for the student body and the community, ISUE needs the help of the Alumni Association.

TAX ADVANTAGES

In planning your level of giving to the ISUE telefund, don't forget that your contribution is tax deductible. The 1978 Indiana General Assembly enacted legislation which allows you to receive a 50% tax credit each year on contributions to Indiana institutions of higher education. For example, if you make a pledge of \$50 to ISUE through the telefund, your tax credit for that gift will be \$25.

If you are married and file a joint State of Indiana income tax return, you can receive a 50% state tax credit of up to \$200 per year. Similarly, if you are single and file an individual return, you can claim a 50% state tax credit of up to \$100 per year.

In addition to the state tax credit, your contribution to ISUE is deductible on your U.S. federal income tax return. Your federal deduction, of course, depends on your tax bracket.

YOUR GIFT WILL HELP

Regardless of whether you make a \$10 contribution or a \$100 contribution, your gift will help. The amount you give is not as important as the fact that you *do* give, and share in our responsibility to our Alma Mater. Plan to make a contribution during the 1979 telefund, March 12-17. The gift you pledge will aid ISUE as it continues to strive toward excellence as a provider of quality public higher education, and will benefit you as its tradition of excellence becomes increasingly known.

DANIEL SCHOEDER teaches at Maconaquah School Corporation in Bunker Hill, Indiana.

GREG SMITH has accepted a position as a transmission specialist at Aamco Transmissions in Fort Wayne, Indiana.

GARY WALTON is administrative assistant for the Indiana XV Regional Planning Commission in Jasper, Indiana.

JEAN WIGGINS was recently married to Scott Blessinger. Jean teaches at Crestview Elementary School in Huntingburg, Indiana.

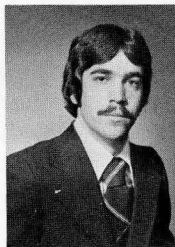
THOMAS E. WILLIAMS is the program director of WDXI Radio in Jackson, Tennessee.

1978

JOY ADAMS, an elementary education graduate, has accepted a position with International Films Company. She will appear in educational films.



ED ALLISON works in computer services for Reynolds & Reynolds Corporation in Dayton, Ohio.



WILLIAM ALVEY has accepted a position as staff accountant with the Ralph V. Michel CPA firm in Jasper, Indiana.

STEPHEN BACKES is a cost accountant with Sunbeam Plastics Corporation in Evansville.

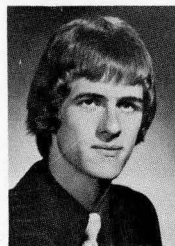
JAN BASNETT, a psychology major, is a vocational evaluator for Wabash Area Vocational Enterprises, Inc. in Mt. Carmel, Illinois.

DEBORAH BEASTALL is an art teacher with the Vanderburgh Vocational Teaching Center.

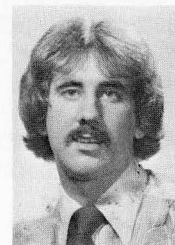
HAROLD BEUMEL is attending Thomas Colley Law School in Lansing, Michigan.

IDA BLOCK is a dental assistant with Dr. H. W. Campbell in Henderson, Kentucky.

GREGORY BROWN is a teacher for the Benton Harbor (Michigan) School Corporation.



WILLIAM D. BURNS teaches for the Warrick County School Corporation in Boonville, Indiana.



RUSS CATON is the assistant manager of Osco Drugs in Owensboro, Kentucky.

SEPTEMBER CROUCH is an analyst with Products Acceptance & Research Corporation in Evansville.

FRANK CUSTER was recently married to Vickie Taylor. He is a claims adjuster for Allstate Insurance Company.

JULIE DEMPERSMIER is a dental assistant in Dr. Frank Tuber's office in Mt. Vernon, Indiana.

PAT DOUGAN is a management trainee with the Shoe Corporation of America—Woolco in Evansville.

SISTER KAREN DURLIAT teaches at Washington High School in Washington, Indiana.

JACK ELLIOTT, a dental technology major, is a ceramist and owner of the Elliott Dental Laboratory.

JOHN P. ELLIOTT, a social science major, is a teacher and coach at North Posey Metro School District in Poseyville, Indiana.

ROBERT FENWICK is pre-trial services officer for the Administration Office of the Courts in Owensboro, Kentucky.

WILLIAM E. FENWICK is a revenue agent with the Internal Revenue Service in Phoenix, Arizona.

ANN SEAMAN FLITTNER is the shop decorator for Rose Marie's Gift Shop.

PHYLLIS FOWLER a general business graduate, is an expeditor for Mead Johnson & Company in Evansville.

MARY M. FOX, a chemistry graduate, is a teaching assistant at the University of Illinois.

DAN GREEN, a psychology major, is a loan officer with Midwest Federal Savings & Loan Company. Dan recently married Kathy Norman.

SHERRY HAJEK is a dental hygienist for Dr. C. Merrell Hudson, Anderson, Indiana.

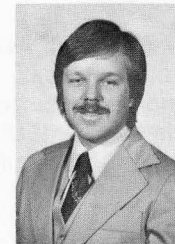


DEBORAH HELFRICH worked with the Human Relations Institute at ISUE this fall.

CHRISTOPHER MAY is an elementary education teacher for the Catholic Schools of Evansville.

JAMES MCCRACKEN has accepted a position as a marketing representative with National Cash Register in Evansville.

BARBER DALE MCGUISTON teaches social science at Princeton (Indiana) High School.



MARK MCCURDY is a ramp agent for Eastern Airlines at Dress Regional Airport in Evansville.

BEVERLY MCMANAWAY is a dental hygienist for Dr. Stephen Cosgrove in Evansville.

STEVE MITCHELL teaches math at Castle High School in Newburgh, Indiana.

BERNARD MONTGOMERY is a staff accountant with Kemper, Fisher, Faust, Lawrence and Company in Vincennes, Indiana.

GRANT B. OLDS, a marketing major, has accepted the position of machinery sales representative with Feldhaus Schwartz & Company.

WARREN PAPANMEIER, JR. has accepted the position of operation controller at Merrill Lynch in Evansville.

MARTHA POTTS is a secretary with Biagi Hannan & Associates, Inc. in Evansville.

SHERRI REYNOLDS teaches first grade in the Chandler Christian School.



DEBBIE STIPLER is a third grade teacher at Holy Spirit School.

THERESA WEBER, a math major, is a systems analyst for Research Systems Corporation.

TOM WILHITE, a political science major, has accepted a position as sales representative with R & S Supply company in Evansville.

RANDY WILL is a field representative with Equifax Services in Evansville.

MICHELE WINTERNHEIMER teaches kindergarten at the Evansville Day School.

ALUMNI SURVEY UNDERWAY

Indiana State University Evansville is one of 19 institutions in the country chosen to participate in Project Choice, a federally-funded project to improve information colleges give to prospective students.

As a part of that program, a survey of all graduates is being conducted in an attempt to find out more about the careers they have entered, the relationship of their career to their academic preparation,

and their satisfaction with ISUE. It is hoped that sharing this information with students considering entering ISUE will help those students make better choices about their education, their major, and their future.

Graduates who have not completed and returned their survey are urged to do so. All information is treated anonymously; the University is interested only in seeing overall trends among its graduates.

GARY SAMMET was recently married to Judith Boekout in Jacksonville, Florida. Gary is a statistician with the State of Florida Public Health Statistics Department.

ROBERT SANDERS has accepted a position as material control supervisor at Zenith Electronics Corporation.

CHRISTINE SCHLENSKER works as a dental assistant for Dr. Glen Norton in Evansville.

DEE A. SCHMITZ is a respiratory therapist at Welborn Hospital in Evansville.

KEITH SCHNELL has accepted a position with Kimball International Piano Company in Jasper, Indiana.

ANN SHANK, a finance major, is a management trainee at First Federal Savings & Loan in Evansville.

Alumni Additions



1972

Mr. and Mrs. Lawrence Foerster, a son, David Peter.

Mr. and Mrs. Steven Bohleber, a daughter, Kristina Sue, November 30, 1978.

1973 & 1974

Mr. and Mrs. Ronald Romain, a son, Jeffrey David, August 27, 1978. They also have a daughter, Amy Beth.

Mr. and Mrs. Paul Greenwell, a son, Neil Norbert, November 9, 1978.

Mr. and Mrs. Ernest Hicks, a daughter, Megan, December, 1978.

1975

Mr. and Mrs. Dennis Lacefield, a son, Dennis Eric, October 23, 1978.

1977

Mr. and Mrs. Mick Deckard, a daughter, Julie Ann, April 10, 1978.

1978

Mr. and Mrs. Michael Pinson, a daughter, Candace Danielle, September 11, 1978.

Alumni Information Card

Please complete the Alumni Information Card with updated material and send to Director, Alumni Affairs, ISUE.

NAME _____

ADDRESS _____

CITY _____ State ____ Zip _____

Present position (list title and date you started this position):

Recent personal information (Include marriage, births, awards received, business promotions, and other pertinent personal information.)

Year graduated and major field of study.

THE ALUMNI OFFICE NEEDS CURRENT ADDRESSES FOR THE FOLLOWING GRADUATES OF ISUE. WILL YOU PLEASE CHECK YOUR ADDRESS LIST AND SEND US ADDRESSES FOR ANY YOU HAVE? A CLIP AND MAIL FORM IS PROVIDED FOR YOUR USE. THANKS FOR HELPING YOUR ALUMNI ASSOCIATION.

PLEASE HELP!

Daniel K. Aussenbaugh
 Edwin S. Bailey
 Kelly T. Beaven
 Frederick W. Bawel
 Donna Sue Bayer
 Nancy C. Benedict
 John F. Berry
 Cathy J. Besing
 August J. Blaxton
 Brian G. Brown
 Joann Bruce
 Nancy Bugg
 Kenneth M. Bunton
 Richard M. Burkhardt
 Stephen G. Butze
 Donald L. Cargill
 Karen J. Carr
 Tommie G. Chumbley
 Rebecca L. Condis
 Catherine M. Conner
 Ruth Conway
 Cynthia A. Cook
 Catherine C. Crabtree
 Mark C. Dalton
 Judith A. Daves
 Mr. & Mrs. David Deeg
 Janesville, Wisconsin
 Marvin Dremstedt
 Clara B. Easley
 Susan L. Eaton
 Stephen W. Egan
 William A. Fairchild
 Gail Feaster
 Timmy E. France
 Sue Ann Franks
 Carl P. Gerding
 Catherine F. Gibbs

Robert L. Glines
 Jerry K. Goebel
 David E. Gunn
 Christine A. Hartig
 John A. Hedinger
 Sara A. Hendrickson
 John S. Heumann
 Thomas E. Hodges
 Mary Hoeflinger
 Steve R. Hopkins
 George Howard
 Rebecca J. Hufnagel
 Alan R. Julian
 Michael Keith
 Kurt Koenig
 Carolyn B. Loveless
 Stephen C. Lutz
 Portia M. Martinson
 Ida L. McDowell
 Donald E. Miller
 Sheryl D. Moore
 Kent C. Mosier

Debra J. Mueth
 Suellen Mumma
 Richard Neitzke
 John S. Niggel
 Jerry J. Patterson
 Danny R. Phillips
 Paula G. Pierce
 Rebecca Pierce
 Gay Pittman
 Florence A. Purcell
 Harvey Quick
 Thelma Jean Rice
 Carol Robb
 James Robinson
 James Rochele
 Peggy J. Roedel
 Louis W. Roth
 James E. Ray
 Eddy Rushing
 George L. Russell
 Edward J. Scheibel
 Terri L. Schwaderer

Raymond L. Seitz
 Lona Sharp
 Jennifer L. Smith
 Gayle Buroker Springer
 Claudia A. Stocking
 Albert Strader
 Pamela Stunkel
 Robert W. Swan
 Juliana E. Topper
 Robert L. Urbanek
 Elizabeth J. Walter
 Michael J. Waterman
 Jan Weidenbach
 Kenneth E. Weinzapfel
 Robert E. West
 Lorraine R. Wheelock
 Charles L. Williams
 Michael S. Williams
 Debra A. Willis
 William J. Wright
 Kendrick W. Yates
 Bonnie S. Zint

Address Correction Requested
 INDIANA STATE UNIVERSITY EVANSVILLE
 8600 University Boulevard
 Evansville, IN 47712

TO: MARTHA I WILLETT
 25 W OREGON ST

EVANSVILLE IN 47710

Non-profit Organization
 U. S. Postage
PAID
 Evansville, IN
 Permit No. 1675

clip and mail

LOST ALUMNI

Name _____

Address _____

Name _____

Address _____

Name _____

Address _____

Mail this card to the Alumni Office, ISUE,
 8600 University Boulevard, Evansville, IN 47712