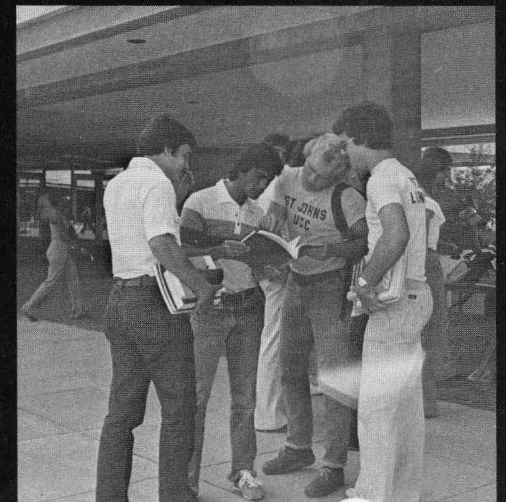
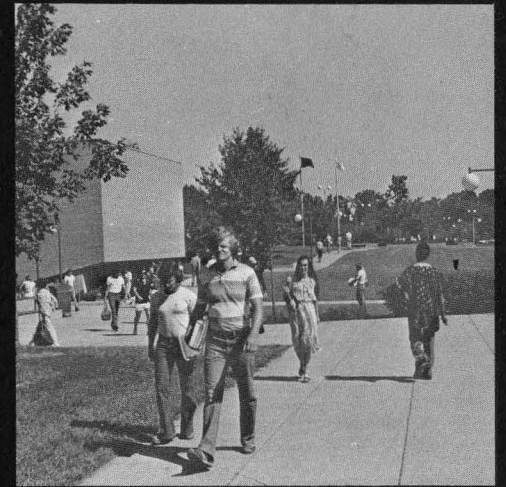
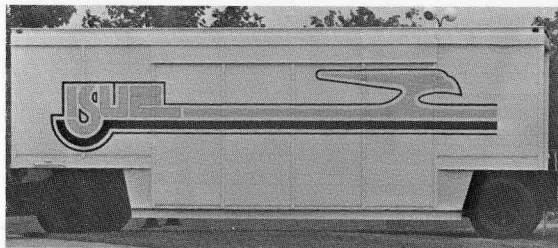


# 8600 UNIVERSITY BOULEVARD

Volume 8, No. 1  
Fall 1979

## *Enrollment Tops 3000 Mark As ISUE Enters 15th Year*





**PEPSI BACKS EAGLES** . . . Evansville's Pepsi-Cola Company has outfitted one of its delivery trucks in Eagle attire to show support for ISUE's athletic program. The school logo decorates the side of the truck and the mascot and motto appear on the rear. Pepsi officials joined ISUE athletic director Wayne Boultinghouse for the unveiling. Pictured are: Paul Keller, marketing manager; Boultinghouse; Norman Miller, vice president and general manager; and Steve O'Bryan, sales manager.

# 8600 UNIVERSITY BOULEVARD

8600 University Boulevard is published three times annually by the Office of the President, Indiana State University Evansville, Evansville, Indiana 47712. Please send form 3579 to the Office of the President, ISUE, 8600 University Boulevard, Evansville, IN 47712.

Volume 8, No. 1  
Fall 1979

Readers are invited to respond to content in the form of letters signed and addressed to the editor.

**EDITOR:**

Sherrianne Standley

**CONTRIBUTING EDITORS:**

Ralph Kent

Ann Humphrey

**ARTICLES:**

Mary Lou Maxwell

Steve Costello

Mary Lue Russler

**PHOTOGRAPHS:**

Tom Lilly

Paula Cockrum

# Record Enrollment

## 3018 Students

### Register at ISUE

Despite predictions of declining enrollments at colleges and universities across the nation, Indiana State University Evansville reached a record enrollment of 3018 this fall, surpassing for the first time the 3,000-student mark.

University officials concurred that a key to the increase was the increased awareness by the public of ISUE and its programs combined with the affordability of those programs.

Admissions director Tim Buecher call the increased awareness of ISUE "the most important factor in our enrollment increase" and commended students and graduates for "building community awareness of their university." Buecher thinks it has been easy for current and past students to speak well of their university because of the efforts of faculty and staff who, through their day-to-day contact with students, have built respect and pride in the institution.

Buecher also surmised that factors such as

the growing academic reputation of ISUE, the relative cost of ISUE, bus service to the campus, and the computerized car-pooling program have contributed to making ISUE a desirable university to attend.

ISUE President David L. Rice listed four main reasons he feels the school experienced an increase. He cited "good quality educational programs, a curriculum attuned to employment realities, an increased proportion of women developing their competencies through educational programs, and the renewed realization that in addition to the cultural and intellectual dimension, studies are reaffirming the economic value of a college education."

Rice pointed to the economy as another factor, saying, "there is a consumer price advantage that goes with public higher education. The pricing is attainable for low and moderate income families who would not have an opportuni-

ty if ISUE was not here. This means that these families may obtain a baccalaureate degree program that is within their economic means.

Dr. Donald D. Bennett, vice president for administration, echoed that sentiment when he spoke of the effect the economy has had on the enrollment at ISUE. "ISUE provides a less expensive alternative than a private or a residence campus," he said. But this factor did not head Bennett's list of reasons for the increase.

He feels that the continued development of specialized programs such as engineering technology and other such programs which are related to occupational success is a factor in attracting students to ISUE. He also thinks that the visible advantage of ISUE's physical facilities make the school attractive to prospective students and that the addition of the new Health, Physical Education and Recreation Building will

make the campus even more attractive by adding a new dimension to student life on a commuter campus.

Bennett also lauded the work of the admissions office for their recruitment efforts and the "faculty and staff who have dedicated themselves to helping students on a one-to-one basis."

According to the Registrar's Office, the increase was a combination of new and transfer students. Not only is there a higher head count, but also a greater percentage of full-time students, making an increase in the number of credit hours produced. Bennett attributes this trend to the orientation and pre-registration programs for new students on campus. "These programs allow students more opportunity to get the course and number of courses they desire," he says.

## 10-YEAR ACCREDITATION GRANTED

"Indiana State University Evansville has demonstrated its ability to provide solid, imaginative programs at the certificate, associate, and baccalaureate degree levels within the constraints imposed upon it," states the report of Commission on Institutions of Higher Education of the North Central Association of Colleges and Schools.

On July 23, the commission approved the continued accreditation of ISUE, granting it 10-year accreditation, the highest level possible.

ISUE President David L. Rice responded with pleasure to the news, saying, "The 10-year accreditation is a milestone made possible by the concerted effort of community leadership, faculty, administrative and staff commitments to building a fine institution."

The evaluation team's report was based on several conferences held with members of ISUE's Faculty Council, Student Government, Board of Trustees, President's Planning Group, and a sampling of individuals. The team also reviewed an institutional self-study, institutional data, catalogs, and supplementary data.

Cited as ISUE's areas of strength were an outstanding physical plant including develop-

ment plan; an effective administrative and academic organization; imaginative yet realistic leadership; judicious fiscal management; a strong faculty dedicated to the institution; involvement of students in institutional government; sound academic programs; and good services sensitive to student needs.

The evaluation team complimented ISUE on the progress it had made in following the suggestions to further strengthen the school's programs. Among those suggestions were to: increase developmental services for night students, to increase library holdings in support of graduate programs, and to continue in the efforts to attract minorities in accordance with the guidelines of affirmative action.

According to the evaluating team, "The institution is highly regarded within the community largely because of its responsiveness to local needs."

Pointing to the support the University receives from the southwestern Indiana community it serves, President Rice added, "The University is fortunate to be located in a community alive with life, art, industry, education, excitement, and warmth."



Teresa Dick of Evansville was the 3,000th student to register at ISUE for the fall 1979 semester. She was presented an engraved ISUE mug by President David L. Rice.

# ON CAMPUS

## STUDENT EDUCATION ASSOCIATION HONORS J. MAXWELL DAVIS

ISUE's Student Education Association has been renamed in honor of J. Maxwell Davis, professor of life science and teacher certification director who retired in August.

Announcement of the honor was made at a reception given for Davis by the ISUE Division of Education. Davis received a plaque from the SEA commemorating the event and the renaming of the organization.

Davis, who has taught science and science education at ISUE since 1968, has compiled a distinguished record of service to education and to the University.

Also acknowledging that record of service, the ISU Board of Trustees took official action giving him the title professor of life science and teacher certification director emeritus.

## ENERGY CONSERVATION MEASURES WIN AWARD FOR ISUE

Indiana State University Evansville has been awarded \$1,000 in recognition of its winning proposal in the fourth annual Cost Reduction Incentive Awards Program, which is jointly sponsored by the National Association of College and University Business Officers (NACUBO) and the U.S. Steel Foundation.

ISUE was honored for saving over \$9,000 last year by implementing a retrofit system which

converts single-glazed windows to insulating thermal pane windows.

The award was presented by William A. Gregory, assistant executive director of the U.S. Steel Foundation, during the NACUBO annual meeting in Atlanta. There were 30 winning proposals which were recognized in the awards. Those proposals represent a total annual savings on their campuses of well over \$5 million.



ISU Board of Trustees members visited the site of the new Health, Physical Education and Recreation building during their October Board meeting on the ISUE Campus.



More than 120 area educators and alumni of ISUE attended the annual teacher education breakfast October 25 at ISUE. Sponsored by the alumni association, the event featured entertainment by the Mid-America Singers and a keynote talk by ISUE athletic director and basketball coach Wayne Boultinghouse.

## NEW FACULTY JOIN ISUE

Eight new faculty members have joined ISUE this fall. They are: **Ann Brandt**, assistant professor of psychology, who holds the B.A. in psychology from the University of Maine and the Ph.D. from Texas Women's University; **Kenneth Creech**, assistant professor of communications, who holds the Ph.D. from Wayne State University and who has taught at Wayne State and the University of Cincinnati; **Augustine Jay Fredrich**, professor of civil engineering technology, a 19-year employee of the Army Corps of Engineers and former director of the Institute for Water Resources at Ft. Belvoir, Virginia who holds the masters in civil engineering from California State University; **William C. Henderson**, instructor of economics, formerly on the faculty at East Ten-

nessee State University who holds the B.A. from Western Kentucky University and the M.A. from the University of Kentucky; **Kwangok Kim**, assistant professor of business, who has studied at Hankuk University (Seoul, Korea), University of Wisconsin and University of Oklahoma where he earned the Ph.D.; **Melody Lewis**, instructor in art, a 1973 graduate of ISUE who has taught in the Mt. Vernon schools; **Charles L. Price**, assistant professor of science education, who holds the B.S. and M.S. in education from Eastern Illinois University and the Ph.D. from Ohio State University where he also taught; **Thomas Koziel**, instructor in biology, a former management employee at Seagram's Distillers who holds the B.A. from the University of Miami and the M.S. from the University of Louisville.

# ISUE FOUNDATION TEN YEARS OLD . . . AND STILL GROWING

by Mary Lue Russler

The Indiana State Evansville Foundation began ten years ago with the first official meeting on September 8, 1969. Mr. Joseph E. O'Daniel and Mayor Frank McDonald spearheaded the project of organizing a nonprofit foundation for the Evansville campus of Indiana State University and invited John McCutchan, Alan Rankin, Jack Hahn, David Rice, William Hitch, Donald Elliott, and James Fields to participate in organizational meetings as early as November 1, 1968.

The ISUE Foundation's first effort was to recruit 100 contributors to donate \$100 each who would become members of its Century Club. By

August 1970, 95 members had been recruited. Today there are over 200 Century Club members whose annual and sustaining support provides funds for student and faculty research and development projects, scholarships for students, travel expenses for faculty attending professional meetings, activities to promote the campus, and general operating expenses of the Foundation.

Other special needs became evident as the campus began to develop. The Book Club was initiated by the Jaycees and contributors helped to bring the ISUE Library holdings up to accreditation standards. More than \$15,000 was received from several hundred individuals,

businesses and industries in this second important Foundation fund-raising activity.

The Foundation's growth encompassed not only the Century Club and the Book Club, but also the Varsity Club supporting the ISUE athletic program; the ISUE Alumni Association fund for alumni-related projects, the Scholarship Fund providing assistance to students, the Bent Twig Outdoor Education Center fund for development of natural areas on campus, special scholarship funds, memorial funds, and other funds established as needs were perceived. At the end of the Foundation's first fiscal year, contributions totaled \$24,965 compared to \$259,709

received during the 1978-79 fiscal year.

During the past ten years, the Foundation has also engaged in several capital campaigns to aid the University. The Book Club and Decade of Opportunities campaigns found new donors interested in the University's development. The Donor Recognition program raised funds to purchase furnishings and equipment for the newly-constructed University Center. Gifts made to the HPER Building campaign will provide spectator capabilities for the University's new Health, Physical Education and Recreation Building.

Through the work of Foundation leaders and the genuine support and loyalty of more than 1,000 friends and alumni of ISUE, the young campus has been allowed to render greater service to its students and the entire community.

At a meeting of the Foundation on October 19, 1979, officers of the Foundation were re-elected. They are: Joseph E. O'Daniel, Development Chairman; E. Donald Elliott, President and Chairman; Frank McDonald, Vice President; Irene McDonald, Vice President; William J. Moutoux, Treasurer; Byron C. Wright, Assistant Treasurer; James E. Fields, Secretary; Richard G. Landini and David L. Rice, Administrative Advisor Officers. Alan C. Rankin was named Distinguished Director Emeritus, and Steven L. Bohleber was elected to the Board as the ISUE Alumni Association's representative. Board members re-appointed to three-year terms were: R. Jack Brunton, Walter J. Goeltz, Keith W. Goss, Donald E. Paro, Thomas G. Scheitlin, Albert A. Woll, and C. Wayne Worthington.

Other Foundation Board members are: Leroy Anderson, H. Donald Bryant, Edward E. Fritz, Alan B. Graf, Kenneth Jack Hahn, Robert E. Hampel, Loren D. Herrli, William L. Hitch, Fred J. Kent, Clifford A. Kley Meyer, E. Jerry Main, Bettye McCutchan, Harold O. McCutchan, Paul Seibenmorgen, Robert B. Slade, Marvin L. Smith, Kenneth W. Weyerbacher, and Ted C. Ziemer, Jr.

These officers and members of the ISUE Foundation give their time and talents in directing this growing and important organization so that educational opportunities at ISUE may be broadened. The past decade has been one of growth and development for the Foundation and for the University it nurtures and supports.



**FIRST FOUNDATION BOARD OF DIRECTORS . . .** Ten years ago this fall, these Southwestern Indiana community leaders met to map out plans for a foundation for the Evansville campus of Indiana State University. From left, they are the late John McCutchan; Alan Rankin, then president of ISU; Jack Hahn; Frank McDonald, then mayor of Evansville; David L. Rice, president of ISUE; William Hitch; E. Donald Elliot; and James Fields. Joseph O'Daniel, one of the organizers of the ISUE Foundation, was absent when the photo was taken.

# ISUE

## COACH BOULTINGHOUSE PREDICTS TOUGH BUT EXCITING SEASON

"It's an exciting time to be involved in the ISUE basketball program," says ISUE athletic director and basketball coach Wayne Boultinghouse, as he points to the many positive developments making the Eagles' basketball program the center of attention.

And to what does Boultinghouse attribute all the excitement? He ticks off these reasons as quickly as counting his fingers. "First, ISUE has emerged as an NCAA Division II basketball power with three straight winning seasons as proof of their success. Second, ISUE charter membership in the Great Lakes Valley Conference has aligned the University with five other institutions with a rich athletic tradition. Third, the new HPER Building will provide an excellent campus facility for Eagle contests. Fourth, 7'6" John Hollinden has been a media bonanza for us, bringing national attention to our campus. And fifth, and most important, the support from our students, faculty, alumni, fans and Varsity Club has reached record proportions. This enthusiasm from our fans has come to the attention of the media and the result is that the Eagles are reaping the benefits of press, radio and television coverage.

But Boultinghouse points out that the 1979-80 Eagles face a stiff challenge in their 26-game schedule that includes a complete round-robin slate in the Great Lakes Valley Con-

ference. "The talent is evident, but success will depend on finding the right players to become a cohesive unit," emphasizes Boultinghouse, whose 1979 squad includes 9 returnees from last season plus four new recruits and 7'6" "Big John".

The big question mark facing the coaching staff is at the forward position vacated by four-year letterman Cortez Collins and Emanuel Rowser, who graduated. Pre-season practice will determine which forward candidates emerge at the top for this position.

The coaching staff feels this is the best shooting team in the Eagles' history and Boultinghouse promises the Eagles will "delight the fans with their fast break style of offense and pressure defenses."

"We urge the alumni to assume an active role in supporting the athletic programs," says the coach. "An active and supportive alumni association can become a major building block in our continuing athletic development and in maintaining athletic excellence."

In return, Boultinghouse promises to work toward rewarding the fans with a banner year and an NCAA post-season tournament appearance. "We look forward to seeing a large contingent of alumni among our fans this year," says Boultinghouse.



### 1979-80 SCREAMING EAGLES

**Back row, left to right:** Charlie Sininger (student manager), Leonard Nelson, George Macon, Cully Nander, Rick Kissel, Odell Hopkins, John Brown, Gary Zigenfus (trainer), Bill Green (student trainer).  
**Front row, left to right:** Wayne Boultinghouse (athletic director and head coach), Dave Collins, John A. Ortega Irwin, Clovis McDowell, Lynwood Cowan, Bucky Walters, Kae Moore (assistant coach).  
**Foreground:** "Archibald Eagle" Kevin Mattingly.



# TEAMWORK WILL MAKE A DIFFERENCE

by Steve Costello

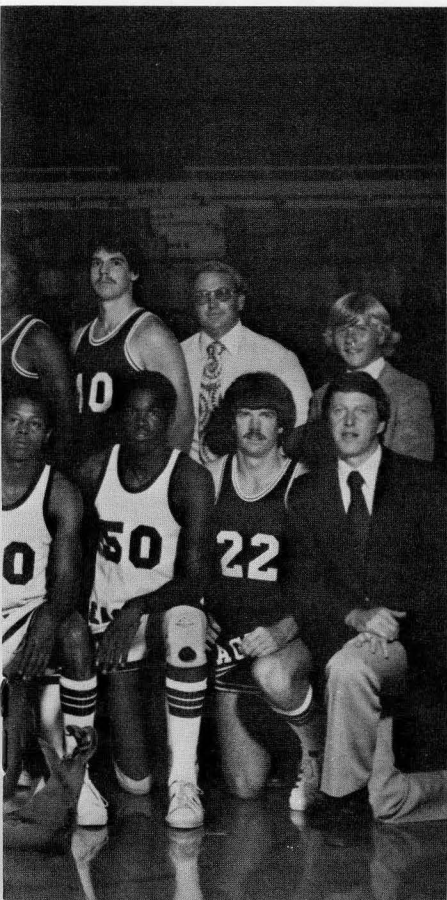
John Hollinden, 7 foot, 6½ inch center for the Screaming Eagles, is an important key to this year's success. However, as John puts it, "In order to work, there will have to be team unison. Most of the time, when the team is together watching the World Series or something, everyone gets along just great. We just hope the same effect can be carried onto the floor."

His concern is mainly to be a team player. "People cannot just expect for me to score 30 points a game and grab 30 rebounds; there are other categories which help you win ballgames, such as picks and assists," he says of those play techniques which are not stressed in box scores and record books.

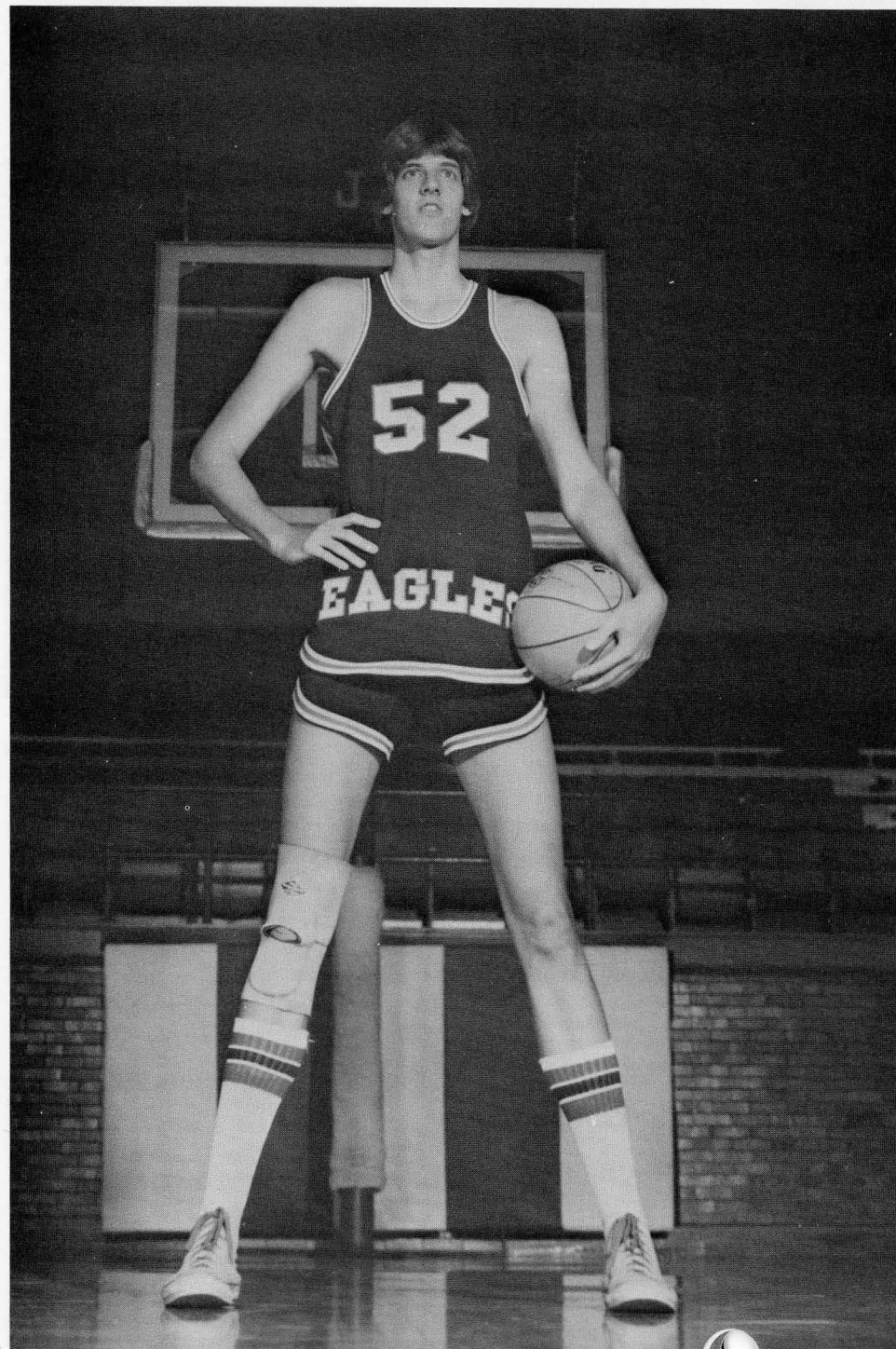
When asked about his future at ISUE, John enthuses, "I really love it. The coaches are great, everything is fine, and I'll most definitely finish up here."

When the season is underway, the fans should be looking at John Hollinden as a total player; looking at the rebounds and the passes, not just the point totals, and remembering one of the proverbs of intercollegiate competition: You play as a team, you win as a team.

*"Big John" Hollinden, the second tallest basketball player in the nation, transferred to ISUE in 1978 from Oral Roberts University. He was redshirted last season, but has two years of eligibility left. The son of Mr. and Mrs. Joseph J. Hollinden of 1300 Woodbine Lane, he began playing basketball late in elementary school. He won all-city and all-conference honors at Central High School his senior year. Hollinden is pursuing a degree in communications.*



son, Kelly Williams, John Hollinden, Doug Alexander, Mark Block, Dan Labhart, Thurber Davis,

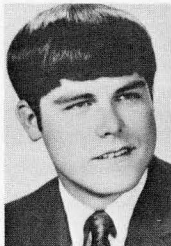


# the GRADUATE ROUNDUP

The Graduate Round-Up features alumni of Indiana State University Evansville who are making noteworthy contributions in their respective fields. Information is gleaned from the Alumni Information Card, friends of alumni, and the Alumni Association officers and Executive Board. Alumni are invited and encouraged to record their accomplishments on the Alumni Information Card and return it to the ISUE Office of Alumni Affairs.

1971

**James F. Jaquess**, a management graduate, has been promoted to associate international project manager with the Nuclear Power Generation Division of Babcock & Wilcox in Lynchburg, Virginia. Mr. Jaquess holds an MBA degree from ISU (Terre Haute). His initial assignment in this new position is with the Meulheim-Kaerlich Nuclear Power Station near Koblenz, West Germany.



1972

**Lee J. Begle**, an elementary education graduate, recently became principal at Ferdinand Consolidated School. Lee and his wife Ginny reside at Ferdinand with their two children.

**Karen L. Jaquess**, a business education graduate, is vocational business education counselor for Heritage High School and an evening instructor of business at Central Virginia Community College at Lynchburg. She holds a Master of Science degree from University of Evansville.



**J. Martin Patterson**, who graduated with a degree in social science, has recently completed his Master's degree in secondary education social studies at ISU (Terre Haute). He is teaching in Loogootee, Indiana.

**Jerome Wargel**, a marketing graduate, is store manager of Hendrickson Electronics & Appliances in Boonville, Indiana.

**Charles Wittmer**, a marketing graduate, has been promoted to senior marketing analyst at *The Chicago Tribune*. He resides in Downer's Grove, Illinois.

1973

**Michael Holmes**, an education graduate, is a park ranger in Missouri.

**Karen Nuebling** was married in October to Daniel J. Paul. Karen, an alumni of Delta Phi Epsilon, graduated with a degree in business education and has her master's degree from ISU (Terre Haute). She is employed at Mater Dei High School in Evansville.



**Jane A. Snow**, who graduated with a degree in English and history, has completed the master's degree in library science at Indiana University and is now employed in Brimfield, Illinois as the district school librarian.

1974

**Thelma Gable Maxwell** recently completed her master's degree in guidance at the University of Tennessee. An ISUE mathematics graduate, she and her husband Greg reside in Lafayette, Indiana where she teaches.

**Sharon Rueber** was recently married to Keith Kutzler. Sharon received a degree in education from ISUE and has a master's degree from University of Evansville. She is currently employed by the South Gibson School Corporation.

1975

**Carolyn Cochren**, a business education graduate, has recently accepted a position as public relations coordinator with Dolly Madison

Industries Furniture, Inc., in Huntingburg, Indiana.

**Ted R. Riggs**, an accounting graduate, has been named vice president and general manager of Hoosier Liquors, Inc. in Evansville.

**Anthony Schmitt** was married in September to Mary Anne McCallister. He holds an associate degree in respiratory therapy and is currently employed by Deaconess Hospital.

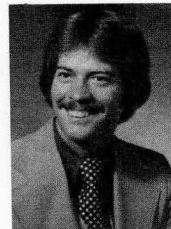
1976

**Matthew Dillman** was recently married to the former Debra Wilson. Matt, who holds a degree in biophysics from ISUE, is now majoring in electrical engineering at the University of Evansville and is a project engineer at Wabash Plastics.

**Pamela Sue Foster** recently became the bride of Eddie Howard. A mathematics graduate, she is math and science teacher and girls basketball coach at Mt. Vernon Junior High School.

**Dave Herrenbruck**, a marketing graduate, is an account executive with Van Ausdall & Farrar, Inc. in Evansville.

**Melvin Niemeier**, a management graduate, is working for Welborn Hospital as purchasing manager. Mel, his wife Cissy, and son, Darrel reside in Evansville.



**David Schmitt**, who graduated with a degree in mathematics, is a math teacher at Southwestern High School in Shelbyville, Indiana.

**James Stuteville**, an accounting graduate, was recently promoted to vice president of Evansville Plating Works.

1977

**Mark Bosecker** was recently married to Debra Samples. Mark majored in marketing and communications and was active in Alpha Omega Psi.

**Rhonda Brenton** was recently married to Brad Harrison. A dental hygienist, she is employed by Drs. John B. Schymik and Stanley R. Nevill in Evansville.

**Thomas R. Farrar**, an accounting graduate, has assumed the position of controller of the Environmental Systems Division of Boehringer Mannheim Corporation of America in Indianapolis.

**Regina Schroeder** became the bride of Richard Witte in August. Regina, an accounting graduate, is employed at Citizens National Bank.

**Theresa Shelton** is teaching at Providence High School in Providence, Kentucky.

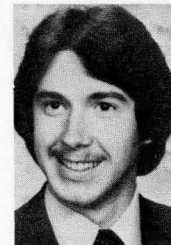
**Phillip S. Smith**, a marketing graduate, is a sales representative for Master Builders of Evansville.

**Dave Stratman**, a life science graduate, is now working in Gaston, Indiana for the Bethel Home for Boys.

**Jean Carol Wiggins** was recently married to Scot Alan Blessinger. Jean received her degree in elementary education and is teaching at Crestview Elementary School in Huntingburg, Indiana.

1978

**Brian Devers**, a general business graduate, is in management training with J.C. Penney Co. in Vincennes, Indiana.



**Michael Dick** was recently married to Diane Bell. A mathematics major, he is employed by United Parcel Service.

**Nora Kittridge** recently married John Dezember. The Dezembers reside in Virginia Beach, Virginia, where Nora is employed at General Electric. John works for Eastern Airlines in Norfolk.





**Jan Ellen McCoy**, an accounting graduate, accepted a position as cost accountant with Sunbeam Plastics in Evansville.

**Janie Mesker**, an elementary education graduate, is teaching in Evansville at St. Agnes School.

**Elizabeth Miller**, an elementary education graduate, is teaching first grade in Tennyson, Indiana.

**Jane Mohr Moad**, an allied health graduate, is a dental hygienist for Dr. Mike Dean in Evansville and Dr. A. Braun of Rockport.



**Jay C. Paro**, an engineering technology graduate, has accepted a position with Peabody Coal Company.

**Beverly Rowe** recently became the bride of David Pleiss. An alumna of Alpha Sigma Alpha, she holds a degree in secretarial administration and is a legal secretary for Caine, Welborn, and Banks of Evansville.

**David Schenk**, a chemistry major, is employed by Red Spot Paint & Varnish Co. in Evansville.

**Frank Stephanus**, a business management graduate, is an associate broker with B & S Realty Inc. in Evansville, and is an active member of the National Association of Realtors and the Evansville Board of Realtors. He is married to the former Linda G. Rooms.

**1979**

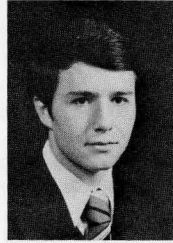
**Jeffrey Adler**, a chemistry graduate, is assistant lab technician with AMAX Midwest Labs in Evansville.



**Tom Barnes** was recently married to Janice Goetz. Tom is an accounting graduate employed with Harding & Shymanski Co. in Evansville.

**Todd Bohrer**, an accounting graduate, has accepted a position with Eaton Corporation in Marion, Ohio.

**John Burris**, a marketing graduate, is production planner at Potter & Brumfield in Princeton, Indiana.



**Kevin Gallagher**, a finance graduate, is customer service representative with National Sharedata Corporation in Evansville.

**Leslie Geiselman**, an art education graduate, is teaching at Elberfeld Elementary School.

**Gregory Heldman**, an accounting and finance graduate, is working for Eastern Airlines as customer service agent in Evansville.

**Rebecca Hergenrother**, an accounting graduate, is a cost accountant with Potter & Brumfield in Princeton, Indiana.

**Richard Hurt**, an elementary education graduate, has accepted a teaching position with Warrick County Schools in Boonville, Indiana.

**Juanita Jochim**, an allied health graduate, has accepted a position with Dr. Mark Smith in Bloomington, Indiana as a dental hygienist.



**Joseph Kastle, Jr.**, an art education graduate, has accepted a teaching position at Castle High School in Newburgh, Indiana.

**Marci Jones**, a business graduate, is an accounts clerk with the Southwestern Indiana Mental Health Association in Evansville.

**Karen Kuester**, an elementary education graduate, is reading specialist at North Daviess Junior/Senior High School in Elora, Indiana.

**Randall Leonard**, an accounting graduate, is accounts receivable manager at Imperial Plastics in Evansville.

**Julie McCalment and Gary Pfister** were recently married. Gary graduated from ISUE with an associate degree in civil engineering technology and obtained his bachelor's degree from University of Evansville. Julie is working with Dr. George Compton as a dental hygienist. The Pfisters reside in Hammond, Indiana.

**Stephen McDonald**, a mining engineering graduate, has accepted a position with Peabody Coal Company.

**Cheryl McLevain**, an accounting graduate, has accepted a position with Firestone in Henderson, Kentucky as junior accountant.

**Greg Mehringer**, a mining engineering graduate, is associate engineer with Texas Utilities Generating Company in Tatum, Texas.

**Terry Mullins**, a marketing graduate, is retail sales manager for Goodyear in Evansville.

**Ted Richardt**, an accounting graduate, has accepted a position with PPG Industries in Creighton, Pennsylvania. He is in PPG's controller training program.

**Michael Rogier** was married in September to Mary Nalin. Michael, an alumnus of Tau Upsilon Sigma, received his associate degree in business from ISUE and is employed by George Koch Sons.

**Melissa Shoulders**, a management graduate, is personnel assistant at Chayes Virginia, Inc., in Evansville.

**Michael Spellum**, an accounting graduate, is an accountant with Turner Tire, Inc. in Evansville.

**Ann Vaughn**, a mathematics graduate, is a math teacher at Evansville Day School.



**Randy Woodall**, a psychology graduate, is district advisor for the Evansville Printing Corporation.

**Alice Wooten**, an elementary education graduate, has accepted a teaching position with St. John's Catholic School in Newburgh, Indiana, teaching first grade and primary music.

**Brenda Young**, a communications graduate, is office manager at Patrick Communications in Evansville.

### Alumni Information Card

Please complete the Alumni Information Card with updated material and send to Director, Alumni Affairs, ISUE.

NAME \_\_\_\_\_

ADDRESS \_\_\_\_\_

CITY \_\_\_\_\_ State \_\_\_\_ Zip \_\_\_\_\_

Present position (list title and date you started this position):

Recent personal information (Include marriage, births, awards received, business promotions, and other pertinent personal information.)

Year graduated and major field of study.

# Alumni Additions



1971

**Coburn and Phyllis Hunt Jacobs**, a son, Jonathon Scott, August 31, 1979.

1973

**John and Joyce Heard**, a daughter, Jaclyn Rose, May 24, 1979.

**Mr. and Mrs. Kerry Higgs**, a daughter, Julie Carol, May 31, 1979.

**Michael and Barbara Kares Holmes**, a daughter, Rachel Lynn, April 3, 1979.

**Steve and Marci Egli Martin**, a daughter, Stephanie Elaine, August 12, 1979.

**George and Pamela Russell**, a son, Colin Andrew, August 2, 1979.

**Steve and Stevanna Seng Schnell**, a son, Steven Matthew, September 21, 1978.

1974

**Rick and Becky Breivogle Brack**, a daughter, Kelly Marie, July 28, 1979.

**Ken and LuAnn Will**, a daughter, Kelley Lynn, July 3, 1979.

1975

**Carol and Jim Claybourn**, a son, James Parker, July 29, 1979.

**Patricia and Alton Roedel**, a daughter, Carolyn Sue, June 23, 1979.

1976

**James and Marilou McGregor Borries**, a son, Paul Benjamin, May 19, 1979.

**David and Rhonda Watkins Knight**, a daughter, Sally Irene, July 2, 1979.

**Frederick and Mary Kittridge Spahn**, a daughter, Angela Michelle, December 8, 1978.

**James and Becky Stuteville**, a son, Ryan Robert, January 16, 1979.

1977

**Mr. and Mrs. Philip S. Smith**, a daughter, Lori Lynn, September 25, 1978.



**ALUMNI ASSOCIATION GIFT . . .** The ISUE Alumni Association has pledged \$25,000 to the Health, Physical Education and Recreation Building Fund to be paid over a 10-year period. The first payment of \$2,500 was recently presented to ISUE President David Rice (center) by Alumni Association Treasurer Rose Zigenfus and Director of Alumni Affairs Ralph Kent.

# Her Goal: The Practice of Medicine

by Mary Lou Maxwell

Cynthia D. Alexander, a 1973 biology graduate, knows a lot about goal-setting and working to achieve her goals. According to Cynthia, "somewhere between high school and college, I decided I wanted to be a doctor. I also decided that I could do it."

This year, she achieved her goal when she was awarded the Doctor of Medicine degree from the Medical College of Wisconsin, which is the medical school of Marquette University.

She is black and a woman, but that did not cause her to hesitate. "I got scholarships, but I had to work very hard for what I got."

Being a black woman has not necessarily been a help or a hindrance, she said. "I know from some of the subtle indications I got from professors in college that they thought, 'You are black and a woman, so why don't you get married and get a job? But minority persons should realize that you can do it. I did,'" she emphasized.

The daughter of Helen Alexander, 818 S.E. 8th Street in Evansville, Cynthia worked in a mental health center in Milwaukee while attending medical school. During the summer, she returned to Evansville where she worked in the office of Dr. C. K. Newsome. In 1977, she served an externship at Detroit's Mt. Sinai Hospital in anesthesiology, and she is currently serving a residency in anesthesiology at Providence Hospital in Southfield, Michigan.

Because of these experiences, helping people and reacting to emergency situations has become instinctive for Dr. Alexander. According to a story in the *Evansville Courier and Press*, while on her way to a mental health seminar at the University of Chicago last year, she had stopped at a service station for directions when she noticed two men arguing across the street. The argument ended and, as one man ran, the other slumped to the ground. He had been shot.

Dr. Alexander ran across the street to the

victim. She applied cardiopulmonary resuscitation as another man helped to keep the victim's air passage open. Soon they were joined by another pedestrian who happened to be a doctor. Their efforts kept the victim alive until an ambulance arrived to take him to a hospital.

Dr. Alexander is planning to become an anesthesiologist and practice in the South. But none of it will come before she takes time to go overseas for missionary work with the Seventh Day Adventist Church. "I'm thinking about becoming a missionary and working in a hospital in Africa for a few years before coming back here," she said. "I've talked it over with church officials who asked me if I would take on the missionary service. All I have to do is decide."

She attributes her greatest source of help and encouragement through her school years to her family. "I could not have done it without their support," she said, "It is frightening to step out and take the years to get to your goal--but they were always there behind me."

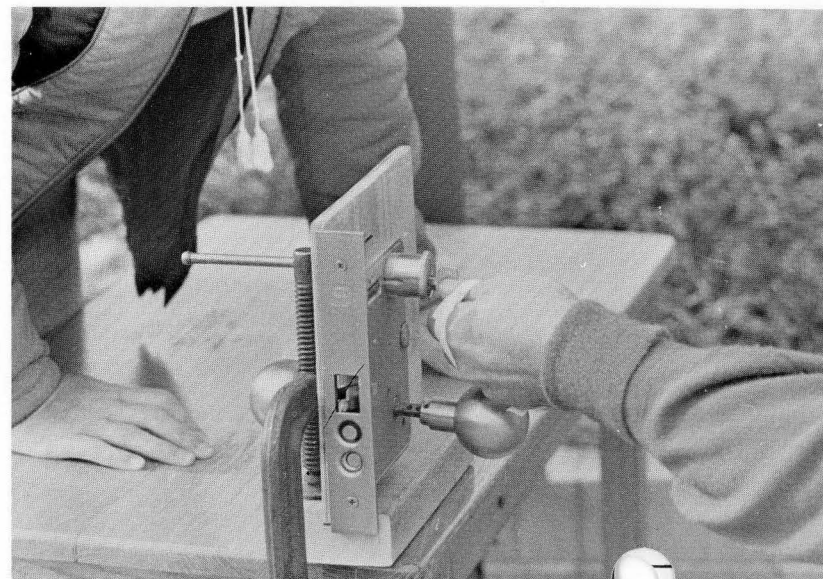
**Mark Your Calendar  
Homecoming  
Game and Reception**

**Saturday, February 9  
ISUE vs. Indiana Central**

**watch for details of special  
events coming to you from  
the ISUE Alumni Association**

# It's tough!

*It's tough to be handicapped. That was the consensus of participants in Handicapped Awareness Day on the ISUE campus. The event, sponsored by the Handicapped Students Advisory Committee and the Social Work Club, was held to increase the awareness of students, faculty, and community persons to the special problems of handicapped persons. An obstacle course included maneuvering a wheelchair on an incline, across a rubber mat and through two sets of double doors without assistance; unlocking a door with the limited use of one hand; pouring water into a glass from a pitcher while blindfolded; and asking for directions while holding the tongue to simulate speech impairment. Among the persons attempting the obstacle course was area weather reporter Marcia Yockey.*



# PLEASE HELP!

THE ALUMNI OFFICE NEEDS CURRENT ADDRESSES FOR THE FOLLOWING GRADUATES OF ISUE. WILL YOU PLEASE CHECK YOUR ADDRESS LIST AND SEND US ADDRESSES FOR ANY YOU HAVE? A CLIP AND MAIL FORM IS PROVIDED FOR YOUR USE. THANKS FOR HELPING YOUR ALUMNI ASSOCIATION.

Richard Adams  
Pamela Fitzgerald Baker  
Charlotte A. Barber  
Robert A. Barnett  
Connie Barton  
Ann Bengert  
Victor Brinksneider  
Douglas S. Bristow  
Nancy Bugg  
Donald Cargill  
Ringo Hoi-Ling Chan  
Marcus Roland Chappell  
Debra Kaye Chipps  
Tommie Gene Chumbley  
Rebecca L. Condis  
Alan F. Cook  
Marilyn J. Duncan  
Daniel R. Engler  
Sherry L. Engler  
Billy J. Fairless  
Karen Gill  
Jerry Wolf Goebel  
Lynn E. Griese  
Mark H. Griese  
Daniel P. Hartz  
Pam Hawkins  
John A. Hedinger  
Diane R. Herring  
John L. Hertweck  
Judith A. Hertweck  
Sandra K. Higginbotham  
Barbara A. Himsel  
Steve R. Hopkins  
Joseph L. Howard  
Anna L. Johnson  
Robin Johnson  
Nancy E. Koch  
Linda Walker Kroeger  
James R. Lambert  
Keith R. Lechner

Beth B. Lockwood  
Michell L. Majors  
Jennifer M. Mayhall  
Ronald W. McDonald  
Becky Allison Miller  
Cheryl S. Cable Miller  
Paul R. Miller  
Richard C. Neitzke  
Kathy D. Oberring  
Sally A. Pecker  
Rebecca Pierce  
Bernard G. Reisz  
Linda Richards  
James Robinson  
Diana Herring Salyers  
Edward J. Scheibel  
Pamela J. Schmidt  
Anita T. Schneider  
David Schoenbaechler  
Randall C. Shumate  
Greg Smith  
Jennifer M. Smith  
Gayle Buroker Springer  
Alan Tucker  
Co T Vu  
Sarah C. Wannemuehler  
Robert A. Waters

Richard Weber  
Jan Weidenbach  
Kenneth E. Weinzapfel  
Robert West  
Deborah L. Whicker  
Sue E. Wiggins

Michael S. Williams  
Ronald G. Williams  
Valerie L. Swangren Wisnosky  
Constance Wright  
George Wright  
William J. Wright



Please notify the alumni office of any address changes so that we can correct our records.

*clip and mail*

## LOST ALUMNI

Name \_\_\_\_\_

Address \_\_\_\_\_

Name \_\_\_\_\_

Address \_\_\_\_\_

Name \_\_\_\_\_

Address \_\_\_\_\_

Mail this card to the Alumni Office, ISUE,  
8600 University Boulevard, Evansville, IN 47712

Address Correction Requested  
INDIANA STATE UNIVERSITY EVANSVILLE  
8600 University Boulevard  
Evansville, IN 47712

TO:

Non-profit Organization  
U. S. Postage  
**PAID**  
Evansville, IN  
Permit No. 1675