



HOUSING BRINGS A NEW DIMENSION TO CAMPUS LIFE...

8600 university boulevard

Photo by David Perigo

Dear Friends and Alumni,

The need for an independent state-supported university in Southwestern Indiana has been confirmed by the analysis of the Board of Incorporators. Consequently, the Board has prepared a blueprint for the establishment and orderly development of a fully autonomous university in Evansville.

The bill establishing a free-standing university that can address directly the higher education and economic development concerns unique to the region and state will be submitted to the 1985 session of the Indiana General Assembly.

But independence has not yet been achieved. Legislators need to know that the community and alumni advocate an independent university.

As legislators consider the final step in separation, alumni support will be a vital force of influence. In mid-January, you may be called on to aid the Alumni Association by contacting your legislators with an expression of support.

In 1985, ISUE will celebrate its 20th year of service. With community and alumni support, it can also celebrate its independence.

Sincerely,

David E. Gray '74
President, ISUE Alumni Association



COMING..... THE ANNUAL ALUMNI TELEFUND

March 11-15, 18-22

During March 11 through 22, your fellow alumni, faculty and students will be working nightly to reach you, asking for your support of the Alumni Association.

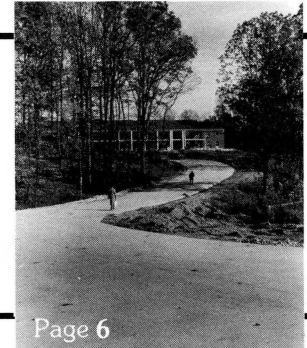
Your alumni donations enable the Alumni Association to aid students with scholarships, help fund the orientation program, and provide support for important university projects which can not be supported with state funds.

Your past support of the Alumni Telefund is greatly appreciated and your future support will allow continuing growth.

Volunteers are always needed...

If you live in the Greater Evansville area and can help make calls, phone the Alumni Office at 464-1924 to sign up.

in this issue



8600 University Boulevard is published three times annually by the Office of the President, Indiana State University Evansville, Evansville, Indiana 47712. Please send form 3579 to the Office of the President, ISUE, 8600 University Boulevard, Evansville, Indiana 47712.

Volume 13, No. 1
1984 - 85

Readers are invited to respond to content in the form of letters signed and addressed to the editor.

Alumni Today	8-11
Alumni Additions	11
Housing Comes to Campus	6
Mid America Memories	5
On Campus	3-4
Report of the Board of Incorporators	3

Alumni Editorial Board

Nancy Allen '83
Augustina M. Kern '83
Carolyn M. Klassy '79
Julie C. Simpkins '74

Photography

John Dawson
Sherianne Standley

Editor

Sherianne Standley

Typesetting

Tracy Deal
Terri Koch

Art Directors

Scott Adams
William Kirtley
David Stephens

Articles

Janice Perkins
Nancy Allen

Board of Incorporators Makes Final Report

Following an intensive four-month study, the Board of Incorporators for an Independent University in Southwestern Indiana has recommended the Evansville campus of Indiana State University become a free-standing university with its own governing board.

The Board of Incorporators, appointed by Gov. Robert D. Orr last spring to study separation and submit operational recommendations, made its final report November 9 to the Indiana Commission on Higher Education.

Dr. John Pruis, the board chairman, told the commission, "I have no hesitancy to say that all of the ingredients are there" for a full, independent University.

"If I were to say which area of the state would probably benefit from independence, I think I would conclude that Evansville is the one. There is no question but that some will see this as a precedent. But I don't think there is any question on this one. I think this should rise and fall on its merits."



Dr. John Pruis, Chairman

Dr. Richard Landini, ISU president, told the commission that ISUE's administrative structure was designed for independence from the beginning. "It was not whether the university would be independent, but only when," he said.

The commission took the board's report under advisement. Final action is expected at the December meeting and will be incorporated into the bill that Southwestern Indiana legislators will introduce in the General Assembly.

Governor Orr had urged the Board of Incorporators to be innovative and exciting, to catch the attention of the Legislature. Thus, included in the recommendations for a future ISUE are some unique concepts—an outreach program of college instruction for outlying parts of the region, a distinctive bachelor's degree program for Ivy Tech graduates who want to continue formal education, and an Institute for Community Resources Development to help area communities with economic and small business development.

The outreach program would use new instructional methods, possibly including a two-way microlink television system. Classes would be taught by university faculty members, with local coordinators assisting in scheduling and counseling. Plans are for the program to begin with 12 courses at three sites in 1985-86, and be expanded to 36 courses in six locations by 1989-90.

The new university—which is to be named the University of Southern Indiana — will require an additional \$25,000 annually for governing expenses of a nine-member board of trustees, to be appointed by the governor. Membership will include students, alumni and regional representatives.

The 1985-86 operating budget will be \$12.1 million and the 1986-87 budget will be \$13.7 million. New programs recommended by the Board of Incorporators would account for \$337,600 the first year of the biennium, and \$601,777 the second.

Other Board recommendations include:

— The university's programs will emphasize regional higher education needs. Attention will be given to the adult population, increasing opportunities for occupational students, offering more off-campus instruction and innovative teaching programs, and developing adult master's degree programs.

— The university will be broad-based, centering on a liberal arts and science undergraduate curriculum leading to careers in business, government, engineering, technology, health professions, education and related fields.

— Graduate programs will focus on professional and technical studies related to regional and state needs, specifically industrial management and health psychology.

— The university will develop and strengthen partnerships with other colleges and regional organizations of government, health, economic development, labor resources, cultural development and philanthropy.

8600

ISUE FOUNDATION GETS TWO NEW DIRECTORS

Two new members have been appointed to the Board of Directors of the Indiana State University Evansville Foundation.

Named to three-year terms were Dale Sights of Henderson, Kentucky, president of Ohio Valley Bank, and Walter Brunton of Mt. Vernon, Indiana, president of the Posey County National Bank there. Brunton is an ISUE graduate and was an alumni representative on the Board of Incorporators studying ISUE separation.

The Foundation also has re-elected its officers, including:

Joseph O'Daniel, chairman of the board; Donald Elliott, president; Frank McDonald, vice president; Irene McDonald, vice president; William Moutoux, treasurer; Byron Wright, assistant treasurer; Bettye McCutchan, secretary, and Richard Landini and David Rice, administrative advisors.

Coomes Leads Eagles, Directs Athletic Program



Mark Coomes

The ISUE Screaming Eagles men's basketball team is under new leadership this year. Mark D. Coomes, formerly coach at Wabash Valley Junior College, has been working diligently with team members this fall, teaching them his brand of basketball and helping them learn a new system.

Coomes was named to the position in May after a successful three years at Wabash Valley, where he led his team to a 31-7 win-loss record in 1983-84 and a 32-7 record in 1982-83. His team posted an 18-0 record in the Great Rivers Athletic Conference to win the championship last year.

A former assistant coach for New Mexico University, University of Illinois, and Northern Illinois University, Coomes was named Coach of the Year for both Region XXIV and Section IV of the National Junior College Athletic Association. Coomes received the Master of Arts degree from New Mexico State University in 1975, and the Bachelor of Science degree in secondary education from Western Illinois University in 1974, graduating with high honors. He also was honored as one of the two top students in the physical education department at Western Illinois in 1973.

Coomes was born in Freeport, Illinois. He and his wife Linda are the parents of two children, Anthony and Andrew. **8600**

Fall Sports Fare Well

ISUE athletes turned in more than credible performances for the 1984 fall sports seasons. Here is a brief summary of how the various teams fared:

The Women's Tennis Team, coached by the Great Lakes Valley Conference (GLVC) Coach of the Year, Dr. Jane Davis-Brezette, won 10 matches and lost three. The women, led by their No. 1 player, Debbie Floyd, won the GLVC Tournament for the third straight year.

The Women's Volleyball Team compiled a 9-30 record with their first-year head coach, Stephani Zahn.

This was the first season of competition for the ISUE Women's Cross-Country Team. Coached by Jane Carlson and led by Kim Doup, the team won the ISUE Classic and the Kentucky Wesleyan Invitational.

The Men's Cross-Country Team won its fifth consecutive GLVC title, dominating the other teams by placing five runners in the top seven. The runners missed qualifying for Nationals by one place at the Regionals, with a fourth-place finish. Senior Art Georges and juniors Tom Rehl and Garrick Walton were consistently Coach William Stegemoller's top runners.

The Golf Team finished its season with a 38-49 record, 35-29 against non-Division I schools. Coach Jim Brown's team finished fourth in the GLVC. Dave McAtee led the Eagles with a 78-stroke average.

The Soccer Team compiled a 11-5-2 record. The Eagles won their fourth GLVC title in a row, attained a top-10 national ranking, and defeated UE in an exhibition match. The Eagles narrowly missed their goal of returning to the NCAA Tourney. Mike Ferrell was the new coach for the team, which was led by seniors Moulton Cato, Greg Tassios and Steward Dowds. **8600**

Enlow Endowment Fund Established at ISUE

Susan Roberta Enlow and Elizabeth Enlow Albon have announced that *The Evansville Courier* will con-

tribute \$50,000 to Indiana State University Evansville to establish an endowment fund in memory of their parents, Robert Cooke Enlow and Rossanna McGinnis Enlow.

Robert C. Enlow was president and chairman of the board of *The Evansville Courier* until his death in 1968. Rossanna M. Enlow assumed the chairmanship of the board of *The Courier* in 1968 and added the responsibilities of president in 1980; which she performed until her death in 1983. Mrs. Enlow was awarded an honorary Doctor of Laws degree from Indiana State University Evansville in 1982 in recognition of her many contributions to the advancement of the arts and her leadership in publishing. Mrs. Enlow had been interested in humanities programs at ISUE and had provided funds for the Liberal Arts Award, given annually to an ISUE student who had excelled in several criteria. Both Mr. and Mrs. Enlow had been vitally interested in higher education during their lifetimes.

Dr. David Rice, president of ISUE said the contribution "will continue the interest that Rossanna Enlow had in the liberal studies program. It is a generous gift and significant step forward for the humanities," he said.

At ISUE, the annual interest from the endowment will be used for the benefit of the fine arts program. **8600**

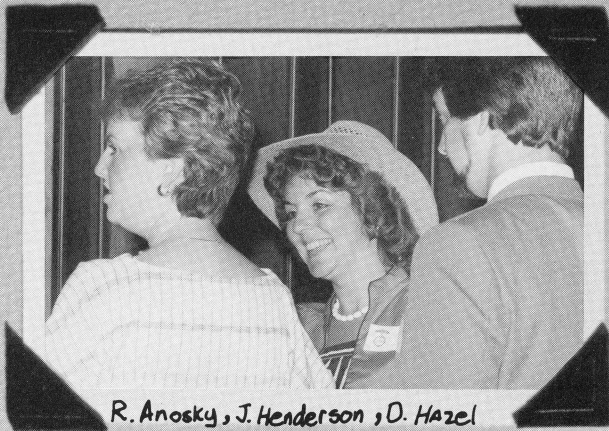
MARK YOUR CALENDAR

Alumni Association
Annual Reception—Dinner Dance

Saturday, April 27, 1985
University Center Dining Room

6:00 p.m. Annual Board Meeting
6:30 p.m. Reception
7:30 p.m. Dinner and Program
Induction of the Class of '85
9:00 p.m. Dancing

Mid-America Memories



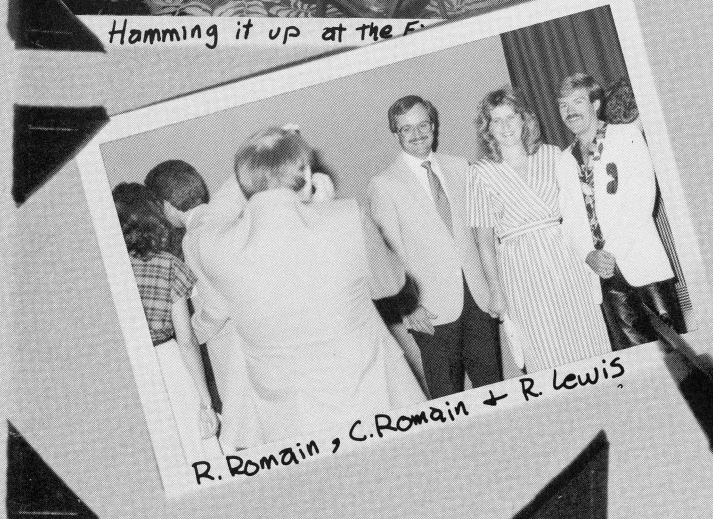
R. Anosky, J. Henderson, D. Hazel



Hamming it up at the F



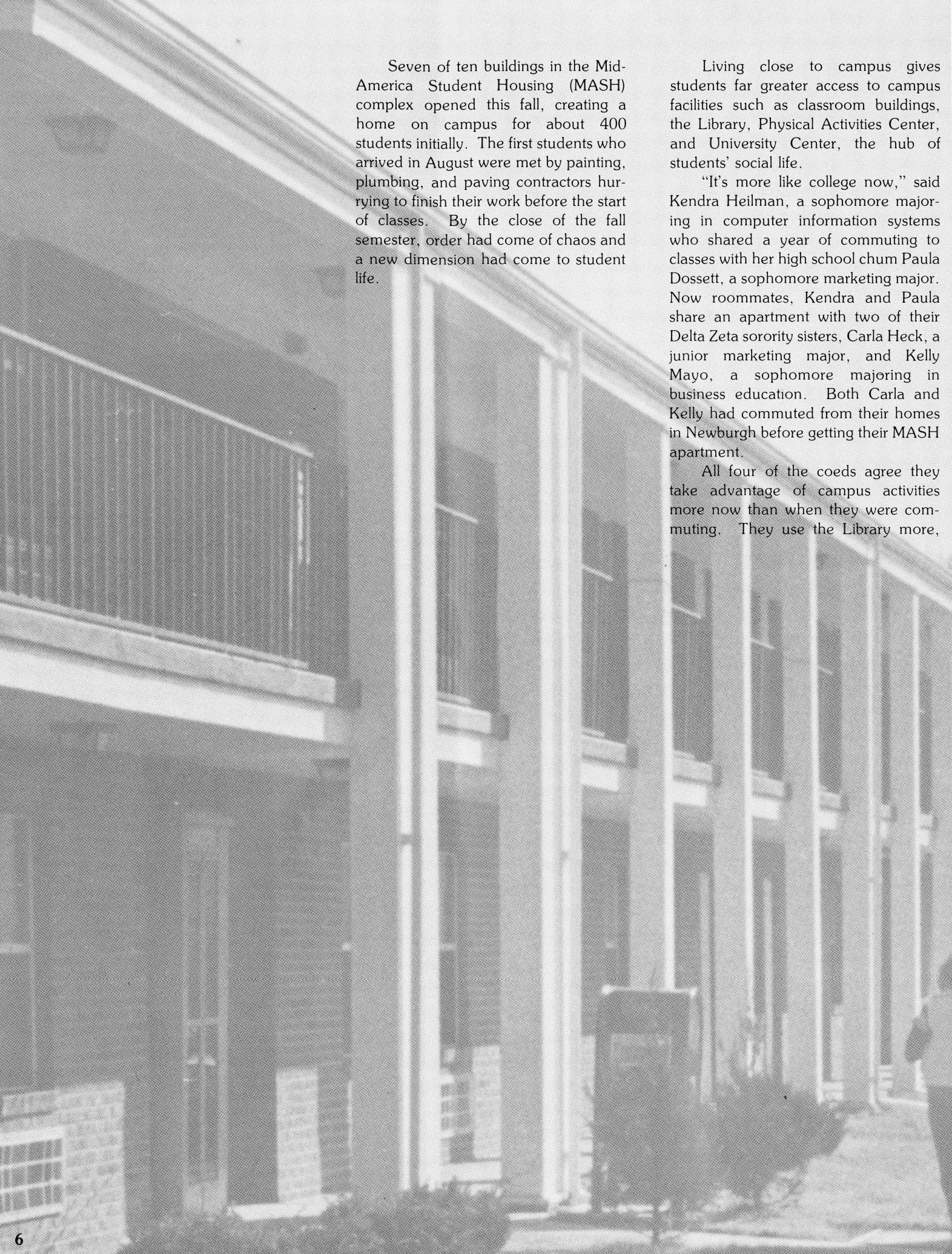
Former Director David Deeg



R. Romain, C. Romain + R. Lewis



Former members of the Mid-America Singers gathered at Evansville's Executive Inn July 28 for a reunion. More than 80 people came from all over the United States to share memories of their days in the singing troupe and renew acquaintances with fellow singers from the first group (1969) onward. Another reunion is planned in 1989.



Seven of ten buildings in the Mid-America Student Housing (MASH) complex opened this fall, creating a home on campus for about 400 students initially. The first students who arrived in August were met by painting, plumbing, and paving contractors hurrying to finish their work before the start of classes. By the close of the fall semester, order had come of chaos and a new dimension had come to student life.

Living close to campus gives students far greater access to campus facilities such as classroom buildings, the Library, Physical Activities Center, and University Center, the hub of students' social life.

"It's more like college now," said Kendra Heilman, a sophomore majoring in computer information systems who shared a year of commuting to classes with her high school chum Paula Dossett, a sophomore marketing major. Now roommates, Kendra and Paula share an apartment with two of their Delta Zeta sorority sisters, Carla Heck, a junior marketing major, and Kelly Mayo, a sophomore majoring in business education. Both Carla and Kelly had commuted from their homes in Newburgh before getting their MASH apartment.

All four of the coeds agree they take advantage of campus activities more now than when they were commuting. They use the Library more,

especially when studying for a "big" test, get to sorority meetings with greater ease, and in warmer weather, they swam in the pool in the Physical Activities Center. Because this group likes to cook, they do not take advantage of special services offered to resident students by American Food Management, which operates ISUE's food service. To accommodate students who do not prepare their own meals, evening "plate lunch" specials are available in the Snack Bar, and a pizza delivery service has been added. Meal tickets at discount prices also are sold by American Food Management.

These are not the only changes student housing has brought to campus. The Activities Programming Board (formerly Student Union Board) has made an effort to plan activities which will appeal to resident students and evening and weekend hours have been extended in the University Center and Physical Activities Center. "The APB is aware of the need for additional programming and is experimenting with new ideas to see what the resident students respond to," said Barry Schonberger, director of student activities. Schonberger feels the resident students are seeking more traditional "collegiate" kinds of activities, and thinks the response to spring events such as Homecoming, Spring Week, and the Eagle Gran Prix will reflect this. Campus clubs and organizations have

experienced increased interest and membership this fall, possibly attributable to student housing. "A large percentage of the students living in MASH are interested in sorority and fraternity affiliation, and have chosen to participate in groups such as Cheerleaders and Feathershakers," explained the student activities director, saying there has been a general increase in club and organization membership on campus this fall.

There is no question that living near campus gives students access to opportunities for extracurricular activities. It also gives students time to participate.

"Even though I came here on an academic scholarship, I might not have stayed all four years without housing," asserted Kendra, who wanted to experience being on campus and participating in as wide a range of activities as possible. Her roommates share her positive attitude about making the most of college and are enthusiastic about their new home on campus.

They rarely go home on weekends, as about half the MASH students do, and they intend to keep their apartment during the summer months. "This is our **home** now, they chorused. And they have decorated their first student apartment as they would a permanent home. They purchased matching bedspreads for the bunk beds and set the dining table with quilted placemats, china and crystal. A silk floral centerpiece on the table and other decorating touches carry out the earth tones of upholstered furniture which MASH provides.

MASH also provides either bunk or twin beds, mattresses, a large couch and matching chair, coffee table, study desks, dressers, and a kitchen table and four chairs. The kitchen is equipped with a stove and refrigerator, but students are expected to bring their own

cooking utensils and dishes. "I'll bet we could feed an army with all the dishes we brought," says Carla, speaking of one detail the group overlooked.

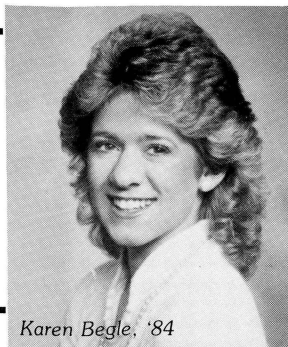
They all admit they brought too much from their parents' homes to their apartment, but so far storage has not been an insurmountable problem for this agreeable foursome. Every shelf is well used and though two coeds share one closet, no difficulties have been encountered. "We all switch clothes, and some days we stand in front of the closet and swear we have **nothing** to wear, even when the two closets and four shelves are **full**," laughed Paula.

The spirit of cooperation evident in this group of roommates is necessary for living in a student housing complex such as MASH. Space will be available for nearly a hundred more students in spring semester, and MASH officials are hopeful more students take advantage of an opportunity to live "next door" to campus. As prospective students visit campus, many incoming freshmen, especially those from counties too distant for daily travel, are expressing an interest in housing for fall semester 1985.

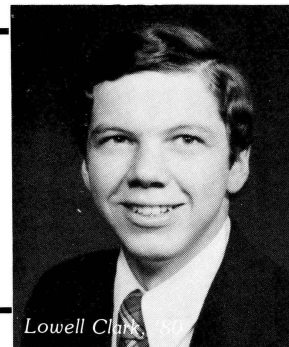
The student housing project, constructed by Southern Indiana Higher Education, Inc., operates on a not-for-profit basis. Students now pay \$495 each per semester for a two-bedroom unit designed to be shared by four students. Some one-bedroom units are available for married students and there are a few units designed for handicapped students.

The MASH project stands as a monument to the dedication of Southern Indiana Higher Education, Inc., which has been seeing to the needs of the campus since 1967 when it raised nearly a million dollars from the community to obtain the land for the Mid-America University Center. Three hundred acres were given to Indiana State University for the Evansville campus, and 110 acres have been held in trust for future development. The MASH project and Sigma Tau Gamma, which constructed the first fraternity house on a fraternity row, both were recipients of donations of land from Southern Indiana Higher Education. The leadership of the community has truly brought a sense of community to ISUE.

Alumni today



Karen Begle, '84



Lowell Clark, '84

Class of 1973

Darryl W. Dassel, CPA, has become a shareholder of Clem, Broerman & Co. at Poseyville, Indiana. An accounting graduate, he spent 2½ years with a regional CPA firm and 6½ years in private industry before joining Clem, Broerman & Co. in July 1982. He and his wife, Susan, have two sons, Wayne and Eric.

John Lawrence, an accounting graduate, has been appointed to a three-year term on the State Committee on Taxation for the Ohio Society of Certified Public Accountants. A resident of Wooster, Ohio, he is employed by the Internal Revenue Service in Canton, Ohio, as examiner, supervisor and instructor.

Tom Lux, a biology graduate, was married in September to Kathy Berg. He is employed as a production supervisor at Colorcraft.

Alen Malott, a marketing graduate, is assistant professor of photo-journalism at the University of Kentucky, Lexington. He teaches at the School of Journalism in the College of Communications, and his students have won honors in college photographer of the year contests.

Class of 1974

John W. Besing, MD, was honored in June as the outstanding resident in the Cardiology Department at East Tennessee State University, Johnson City, Tennessee. He has opened a private practice in internal medicine in Cleveland, Tennessee.

William C. Hirsch, Jr., a management graduate, was married in June to Pamela Sue Tester. He is employed as a salesman at Swanson-Nunn Electric Co.

Chris Skelton, an English major, is an editor in the Publications Department at Home Federal Savings & Loan Association in San Diego, California, and expects to complete a master's degree in English in December at San Diego State University.

Class of 1975

Cathy J. Williams Besing finished work on her master's in business education in June, while employed part-time as an instructor at Milligan College, Tri-Cities Vocational Institute, and East Tennessee State University. She now is office manager for her husband, Dr. John W. Besing, in Cleveland, Tennessee.

Floyd R. Hertweck, Jr., a social science graduate, is employed as a geologist with the U.S. Bureau of Mines, Division of Helium Operations, in Texas. He lives in Amarillo, Texas, and recently completed a publication entitled, "Analyses of Natural Gases, 1983," a Bureau of Mines information circular.

Gary Perkins, an art graduate, has been promoted to art director at Keller-Crescent.

Glen F. Reisinger, a business graduate, has been promoted to district sales manager of Rohm & Haas Co. He is relocating to Illinois from Ohio, where he had been with the company since 1980. He is married to Debra Lovell Reisinger, RN.

John L. Warner, an elementary education graduate, now is employed by RCA Corp. in Indianapolis as a program instrument specialist.

Class of 1976

Wendell Crim, a biophysics graduate, has accepted the position of associate scientist in the cardiovascular biochemistry laboratory of Schering-Plough in Bloomfield, New Jersey. Also in 1984, he was selected as one of the Outstanding Young Men of America, placed sixth in spring cycling at the 1984 Olympic Trials, and established his own company, Nissen Crim Management, for the training and support of competitive cyclists.

Gary L. Gatewood, a sociology graduate, was married in September to Linda L. Streicher. He is a real estate salesman with Steve Thompson Realty.

Catherine Crabtree, a business management graduate who is employed at Wilson-Fiberfil International, was married June 15 to James M. Simmons.

James R. Stuteville, an accounting graduate who now is general manager of Evansville Plating Works, was married in October to Tracy Kristine Starkey.

Class of 1977

Steve Alvey, an accounting graduate, has been promoted from staff consultant to senior consultant in high technology manufacturing at Deloitte Haskins & Sells, Los Angeles office. DeLoitte will merge in January 1985 with Price Waterhouse, to become Price Waterhouse Deloitte.

Thomas R. Farrar, an accounting graduate and CPA, has opened an office in Houston, Texas, offering tax, real estate and investment advisory services. He lives in Deer Park, Texas.

Debra Winslow Mitchell, an elementary education graduate, currently is living with her husband, Gary, and two daughters in Tokyo, Japan, where he will be stationed with the U.S. Air Force until June 1986. She teaches English to Japanese adults, and does volunteer work on the air base.

Class of 1978

Mark Dalton, a respiratory therapy graduate, was married in October to Kimberly A. Cook, former ISUE student who now is a project engineer at Crescent Plastics. He is employed as a respiratory therapist at St. Mary's Hospital.

Patrick L. Dunigan, DDS, a biology graduate, now has a general practice in dentistry in Mt. Vernon, Indiana.

Kevin J. Weil, a life science graduate, is employed as an assistant lab supervisor with Coalfield Research Inc. of Evansville, a Division of Core Laboratories Inc. He was married September 29 to Cindy Claybaugh.

Class of 1979

Sharon K. Bogan, a dental assisting graduate, now is office coordinator for pedodontist David M. Miller, DDS, Newburgh. She was married September 29 to Robert J. Fuchs Jr.

Patty Polen Ingle, a sociology graduate who now is administrator-in-training at Medco Center in Huntingburg, Indiana, is teaching an "Introduction to Gerontology" course this fall at ISUE. She also is a gerontological consultant for nursing homes.

Class of 1980

F. Michelle Ashby, a dental assisting graduate, was married in late September to Donald D. Hopper. She is a dental assistant for Drs. Trover, Altekrose and Pogue.

Laura A. Barker, a mathematics graduate, has been named a representative by Metropolitan Insurance Co. and is associated with the Tim J. Hammersmith agency in Evansville. She formerly taught school in Illinois.

Lisa K. Boblitt, a dental hygiene graduate, was married in July to William J. Galipault, head soccer coach and physical education instructor at Nyack College, New York. She is employed by Dr. Harry Bloomfield, DDS, in New York City.

Mike Elliott recently accepted a position as controller of Atlas Fuels Inc. He is an accounting graduate.

Donna K. Englert, a mathematics graduate, was promoted in September from computer programmer to associate systems analyst at Whirlpool Corp. She was married in April to Greg A. Burger.

Lowell T. Clark, a business administration graduate, has been promoted from computer operator to systems/analysis programmer at Deaconess Hospital. He and his wife, Jeanne, have one son and expect a second child in March.

Joseph A. Laugel, a biology-life science graduate, was graduated in May from the Indiana University School of Optometry, receiving a Doctor of Optometry Degree.

Marian F. Schauss, an accounting graduate, was married recently to John C. Spinks. She is employed by George S. Olive & Co.

Phillip Scott Spradley, a marketing graduate, was married in October to Susan Marie Tieken. He is employed by Wabash Plastics.

Class of 1981

Diane E. David, a marketing graduate, was married in September to Jay B. Houston. She is manager and buyer for Colonial Garden Centers.

Christine R. Deering, an accounting graduate, was married in August to Jeffery K. Kell, an ISUE student and Citizens Information Systems employee. She is an auditor for the Indiana Department of Revenue.

Joseph A. (Tony) Hernandez, a marketing graduate, was married in October to Brenda M. Barney, who also attended ISUE as a psychology major. He is a sales representative for Nabisco Brands in the specialty sales division.

Richard F. Higgins, a business administration graduate, is employed as night quality control supervisor with Zenith Corporation, Evansville.

Marsha Mullens, an elementary education graduate, now operates her own nursery school in Vincennes. She also recently completed a correspondence course in "Writing To Sell Fiction," and has sold one non-fiction and five fictional stories.

Nancy A. Neale, who received her masters in elementary education, has accepted a position with General Electric at Mt. Vernon in the brine recovery plant. She had taught at St. Matthews Grade School, Mt. Vernon, for 14 years.

Rick Rexing, a marketing graduate, was married July 7 to Debbie DeWald. He has been a sales specialist with General Foods Corporation since February and lives at Powell, Ohio.

Tracy A. Smith, a dental assisting graduate, was married in September to Grant L. Gerling.

Kathy Lynn Welborn and **Jay Craig** were married in late July. She is a biology graduate and is employed as a laboratory technician at Indiana University School of Medicine. He is a 1982 biology graduate and is enrolled in the IU School of Dentistry.

Class of 1982

Jayne Brandsasse, an education graduate, has accepted a position with Harwood Middle School, coaching volleyball, basketball and track.

Lori Beth Carroll and **Kevin Ray Bryant** were married in August. She is an art and communications graduate and now is an ISUE admissions counselor. A 1983 history and social science graduate, he is employed in legal research for local attorneys and as a security person at Sears, pending his return to law school.

Kathleen M. Gwaltney, a management graduate, was married in September to Richard J. Paterson. She is employed as a management trainee in the shoe department at Snyder's.

Gregory Keith Hostetler and **Leslie Pauline Qualls** were married in July. He is an elementary education graduate and is employed by the Evansville-Vanderburgh School Corporation. She is a 1984 computer information systems graduate.

Don Ingle, a management graduate, has accepted the position as administrator at Medco Center in Huntingburg. He also is enrolled in the public administrator masters program at ISU. He and his wife, Patty, live at Jasper.

Michael Kuhn, a social science graduate, was married in July to Theresa Seibert. He is employed as a social science teacher and coach at North Posey High School.

Daniel Sollman and **Leigh Ewin** were married in September. He is a management graduate now employed by Wendco Enterprises Inc. in Evansville. She is a 1980 dental assisting graduate and is employed by Dr. Jed Inman.

Class of 1983

Karen Sue Altstadt, an accounting graduate, was married in September to Scott E. Miller, an ISUE student who is employed by Pepsi Cola General Bottlers. She is employed by the Indiana State Board of Accounts.

Catherine Marie Baehl, an accounting graduate, was married in September to Kevin Joseph Glass. She is employed as a general accountant at Essex in Vincennes, where her husband also works.

Mark Bradley Gerst, a business administration graduate, was married in August to Mary Lyn Bell. He is employed with Hickory Farms of Ohio as a manager and lives in Portage, Michigan.

Cheryl Ann Gist, a communications graduate, was married in July to Rick James Vance. She is a program specialist with the Private Industry Council of Southwestern Indiana.

Mark Hipp, an electrical engineering technology graduate, was married in June to Jan Huther, an ISUE student who is employed in the ISUE Placement Office. He is an electrical development engineer at Potter and Brumfield at Princeton.

Gerard Jacobs, a business administration graduate, has joined Emge Realty Co., Newburgh office, as a real estate agent.

Lawrence Andrew Nall, an accounting graduate, was married in August to Julee Marie Williams. He is employed by George S. Olive & Co.

Michael John Rust and **Cheryl Ann Steffe** were married in July. He is a management graduate, a real estate agent with Century 21-Mullen Realty and a United Parcel Service employee. She is an elementary education graduate.

Michelle Stevens, an elementary education graduate, now is teaching sixth grade at Marrs Elementary School at Mt. Vernon.

Bruce A. Stewart, a marketing graduate, has been assigned to the Evansville area as a sales representative for Smith Kline & French Laboratories, the pharmaceutical division of Smith Kline Beckman Corporation of Philadelphia.

Alan W. Tompkins, an economics graduate, has received his MBA, with concentration in real estate finance, from Southern Methodist University in Dallas. He has accepted a position as investment analyst with Property Company of America at Tulsa, one of the 20 largest commercial real estate developers in the nation.

Carla Valier, a mathematics graduate, was married in August to John Breiner, a 1984 ISU graduate who now is a Lafayette Health Department inspector.

David Vaught, an accounting graduate, has accepted a job with the Trust Department of National City Bank.

Timothy Joseph Wagner, an accounting graduate, was married in September to Jane Anne Hutchison. He is a staff accountant at CrediThrift Financial Management Corp.

Class of 1984

Sara Ann Aufderhar, a management graduate, was married in July to Mark Kenneth Loechel. She is assistant manager at the Pierced Ear.

Karen S. Begle, a marketing graduate, has accepted a position as sales coordinator for Kimball International Office Furniture Division in Jasper. She will be living with her parents in Huntingburg.

Julie Campbell, a computer information systems graduate, was married in September to Jeffrey Kempf. She is assistant manager of Carrols Twin Cinema and a sales clerk at deJong's in Eastland Mall.

Rock Arlyn Clouser and **Lori Ann Goodman** were married in September. He is a communications graduate now employed by Don's Music Center; he also is lead guitarist for the Network band and plays bass guitar for a jazz band. She is a marketing graduate, company manager of the Evansville Dance Theatre and a free-lance harpist.

Janice M. Cotton, a business education graduate, accepted a position in August with Kahn Dees Donovan and Kahn. She was married in October to Mark McGiff.

Michael A. Craig, an accounting graduate, was married in September to Stacy L. Schaefer.

Larry Crouch, a computer information systems graduate, has accepted a position as district executive for the W.D.Boyse Council, Boy Scouts of America, in Princeton, Illinois.

Joe Fritch, a marketing graduate, has accepted a position as an industrial compressed air salesman with EVAPAR.

Sharon Ann Froehle, an accounting graduate, was married in June to Keith Andrew Selby.

Greg Hall and **Ronda Lynette Cutteridge** were married in October. He is a political science graduate and has accepted a position as a management trainee for J.C.Penney's in Evansville. He was the first student from ISUE to be appointed to the ISU Board of Trustees. She is a psychology graduate and is employed at Second Chance Community Correctional Facility.

on campus

Gayla Sue Hodges, an accounting graduate, has passed the Certified Public Accountant examination. She is employed at Mead Johnson & Co. and is a student assistant at ISUE.

Jeffery Scott Johnson, a communications graduate, was married recently to Lisa Lynne Brown. He is employed in the production department at WFIE-Channel 14.

E.J. Meier, a management graduate, is employed as an employment/labor personnel assistant with the Evansville Printing Corp.

Rick Gene Rainey, a radiologic technology graduate, was married in September to Jodi Leigh Small. He is employed by Hardin Memorial Hospital at Elizabethtown, Kentucky, as a radiological technologist.

Scott Toelle, a mechanical engineering graduate, has accepted a position as engineer with C. Gott and Associates in Evansville.

Connie S. Wellmeyer, an accounting graduate, has accepted a position with George S. Olive & Co. in Indianapolis.

Michael M. Yon, a public relations graduate, has accepted a position as sales representative with TGG Photographic Industries, Roswell, Georgia.

Stephani Lynn Zahn, data processing technology graduate, has been appointed women's volleyball coach at ISUE. She is employed at UNISEAL in Evansville.

GRADUATE AIDS YOUTH

Frank McKissic, a 1975 graduate of ISUE, has returned to Evansville after nine years in social work in St. Louis and has become broadly involved in services to aid youth in Evansville's inner city.

He is a family and substance-abuse therapist with the Youth Service Bureau, and recently has been supervising a "house arrest" program designed as an alternative to jail while allowing parents to regain control in the family. He has helped organize an Inner City Youth Task Force to help youth solve problems.

McKissic also has been writing a weekly column in the Family/Leisure section of *The Evansville Press* which he hopes will reach those who need help but either are reluctant to seek it or are not aware of the scope of help available.

The Evansville native, who acknowledges with a laugh that he has changed some since his days at ISUE, earned his master's degree in social work from Webster University while he was employed as a St. Louis social worker.

8600

Alumni additions

Joseph and Kathryn Bigge, a daughter, Elaine Janelle.

Rodney and Cindy Sparks Bishop, a daughter, Brittany Brooke.

Jeffrey and Debra Bosley, a daughter, Rachel Lynne.

Thomas and Cathy Bredhold, a son, Robert Andrew.

John and Kathrine Brown, a son, Nicholas Daniel.

Mr. and Mrs. Michael Patrick Craney, a daughter, Allison Christine.

Dennis and Sara Dodds, a daughter, Kimberly Deal.

Mr. and Mrs. Mark Anthony Duckworth, a son, Scott Michael.

Mr. and Mrs. Ronald R. Duckworth, a son, Adam Michael.

Mr. and Mrs. Allen K. Eicher, a daughter, Lea Anne.

Michael and Charlene Fielder, a son, Joseph Charles.

Thomas and Christine Franke, a daughter, Laura Antionette.

Michael and Vicky Hasenour, a son, Clinton Michael.

Keith and Sharon Kutzler, a daughter, Emily Ann.

Gregg and Thelma Maxwell, a son, Matthew Michael.

Frank and Nancy McDonald II, a son, Kep Shroeder Marshall.

John and Robyn Musgrave, a daughter, Elizabeth Anne.

Rodger and Myra Parrot, a son, Gregory Wayne.

Gaylon and Rebecca Pfeiffer, a daughter, Kelsey Marie.

Donald and Mary Ellen Rice, a son, Clint Edward.

Anthony and Cynthia Richart, a son, Brandon Michael.

Mr. and Mrs. Kim Edward Schiff, a daughter, Ashley Rose.

Mr. and Mrs. Morris E. Schmidt, a son, Jonathon Henry.

Mark and Debra Settle, a daughter, Fallon Brooke.

Mr. and Mrs. Chris D. Skelton, a daughter, Arlyn Davis.

William and Kay Smith III, a daughter, Lauren Nicole.

Mr. and Mrs. Frank R. Stephanus, a daughter, Lauren Lee.

Deaths

Mrs. Wilda Lee (Reynolds) Klingelhoefer, 45, who graduated from ISUE in 1977 with a bachelor's degree in sociology, died November 30 after an illness.

The Central High School graduate had done work for Volunteers In Service To America. She also had been a crisis line volunteer, had worked for the City Directory and had been a nurse's aide at Deaconess Hospital and St. Mary's Medical Center.

Survivors include two daughters, Terri Klingelhoefer, an ISUE student, and Lucy Zahnle of Clarksville, Tennessee; a son, Brian, and her mother, Mrs. Gladys Reynolds, both of Evansville; a sister, Mrs. Janet Gould of Florida, and a granddaughter.

Services were held December 3, with burial in Slaughters, Kentucky.

Homecoming 1985

Saturday, February 2, 1985

Alumni Old-Timer's Game	3:00 p.m.
Women's Basketball Game	
ISUE vs. IU-PU-Ft. Wayne	5:00 p.m.
Alumni Old-Timer's Gathering	5:45 p.m.
Homecoming Game	
ISUE vs. IU-PU-Ft. Wayne	7:30 p.m.

Alumni and Faculty Reception
immediately following the game,
hosted by President and Mrs. Rice at
the University Home.

Homecoming Dance
in the University Center Dining Room.
Sponsored by the Activities Programming
Board, tickets will be available at the door.

Address Correction Requested
INDIANA STATE UNIVERSITY EVANSVILLE
8600 University Boulevard
Box #6227
Evansville, IN 47712

Non-profit Organization
U. S. Postage
PAID
Evansville, IN
Permit No. 1675

TO:

MRS GINA WALKER
RR 1
WINSLOW IN

47598