

8600
UNIVERSITY
BOULEVARD



Volume 5 No. 2
Winter 1977

In This Issue

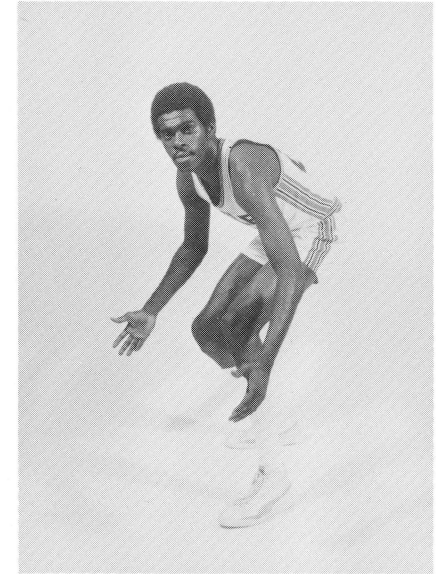
Eagles Place Three on Tournament Team	2
Reaching Out to Women	3
Elizabethan Christmas Dinners	4
Her Office is a Zoo	5
Graduate Roundup	6
Alumni Additions	7
Telefund Planned	7
Harper Joins ISUE As University Counselor	8
Homecoming 1977	8

Eagles Place Three On River City Tip-Off Tournament Team

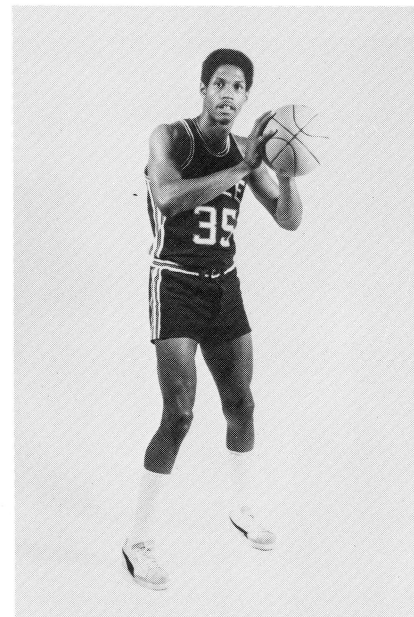
By Ron Lyles

On November 26 and 27, ISUE hosted and won the first annual River City Tip-Off Classic by defeating Missouri Baptist 96-69 in the opening round and eliminating St. Francis College of Ft. Wayne, Indiana in the championship game by a score of 95-84.

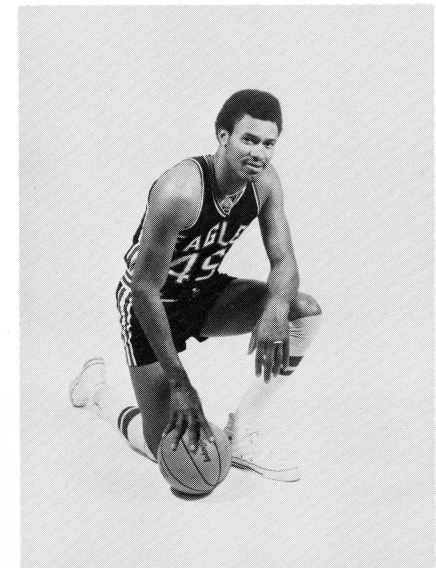
That same evening, the Screaming Eagles posted three starters on the All-Tournament Team which was selected by local sports writers and broadcasters. Randy Curl, Curtis Richards and Dejuan "Spider" Rowser were named to the Team, and Rowser was named the Team's Most Valuable Player. Rowser is currently leading his team in scoring. Curl is leading the ball club in rebounds.



Dejuan "Spider" Rowser



Curtis Richards



Randy Curl

8600 UNIVERSITY BOULEVARD

8600 University Boulevard is published Winter, Spring, Summer, and Fall by the Office of the President, Indiana State University Evansville, Evansville, Indiana 47712. Second class postage paid at Evansville, Indiana. Please send form 3579 to the Office of the President, ISUE, 8600 University Boulevard, Evansville, Indiana 47712.

Volume 5 No. 2
Winter 1977

Readers are invited to respond to content in the form of letters signed and addressed to the editor.

EDITOR

Sherianne Standley

ARTIST AND PHOTOGRAPHER

John Dawson

CONTRIBUTING EDITORS

*Kathy W. Funke
Ralph Kent
Karen Walker
Ron Lyles*

Attitude adjustment could well be a phrase applied to society today as it changes its position toward the roles being played by women. Bringing about such dramatic change is the re-entry of many women to the world of work and continuing education.

And, bringing about a change in the programming of continuing education at ISUE is a woman who has just re-entered the world of work. Sylvia Weinzapfel, ISUE Continuing Education Specialist, in her first year with the University is establishing a comprehensive program to meet the educational needs of women in the Tri-State area.

The impetus for this programming came last year from Dr. Edward Jones, Director of Continuing Education at ISUE, who relates that a great deal of interest had been expressed over the last two years by women for expansion of their educational opportunity, both in credit and noncredit courses.

"There is not extensive programming for women or minority groups in the Evansville area," says Mrs. Weinzapfel. "I see a need, particularly for career awareness programs for women, for programs preparing women to re-enter the job market; and a need to encourage and support women who have anxieties about entering or returning to college. It is also necessary for the University to make programs available to citizens who have economic and transportation problems," she states when speaking of her goals.

Whether it be through cultural enrichment, a career, or a more creative home life, a broad range of courses is being developed in an effort to reach out to every woman. "When a woman decides to re-enter the world of employment," says Mrs. Weinzapfel, "she may find her skills antiquated. She must learn to operate new machines and acquaint herself with new practices and technology which have developed since her previous working days. Career Awareness, Business Update, and Assertiveness Training are three courses offered at ISUE this winter that are designed for that woman," she continues. For example, in the Business Update course, the

REACHING OUT TO WOMEN

by Karen Walker



Counseling women students returning to college is just part of Sylvia Weinzapfel's job as Continuing Education Specialist.

student is given a review of letter styles, punctuation, employment laws, personnel practices, job opportunities, resume writing, and interviewing. Students also will have the opportunity to become acquainted with modern office equipment. Each student will work independently on skill improvement, and finally, will receive skill assessment.

For the person who wants to enrich her personal life and the lives of her family, there are courses in Yoga, French, Spanish, Anthropology, and Parenting. The latter is designed to help parents develop self-confidence in their parental roles. In class, groups are formed to discuss growth and development of pre-schoolers, school-age children, and adolescents. Special attention is given to methods of discipline and behavior change, and to the needs also of single parents and remarried parents.

Another innovative program planned by the Office of Continuing Education is *University Outreach*. Funded by a grant from

the Indiana Committee for the Humanities, the program, which is to begin during spring semester, will present contemporary social issues. ISUE professors will travel to several different locations in Indiana including Tell City, Petersburg, Newburgh, Mt. Vernon, and Evansville during the series to speak on timely subjects. Some of the lecture-discussions in Evansville are expected to be held during the lunch hour in the downtown area. By taking the lectures to the student and offering alternative times to traditional day or evening programs, the *Outreach* program should reach numerous persons not usually able to take advantage of such a series.

In early November, Mrs. Weinzapfel was awarded a grant by UCLA to attend a conference on that campus funded by a grant from the U.S. Department of Health, Education, and Welfare. The UCLA program brought together specialists in diversified fields of vocational counseling from all over

the United States. By sharing in their ideas, she found reinforcement for the program which has been established at ISUE.

Searching out the needs of women as they pertain to continuing education has been one of the facets of Mrs. Weinzapfel's new position. To guide ISUE in this search, an Advisory Board on Programs for Women was created by the Office of Continuing Education. Composed of twenty-one area women representing a variety of interests and backgrounds, the Board will advise the University in planning and developing educational programs and services for women of Southwestern Indiana. Members of the Board are Sadelle Berger, Polly Bigham, Nancy Bizal, Helen Boettcher, Barbara Brothers, Kay Forbes, Ann Frellick, Frances King, Donna Leader, Sondra Matthews, Barbara Newman, Judy Perhach, Marvaline Prince, Carole Shull, Alberta Stevenson, Judy Wilke, Gayle Williams, Pearl Woll, and Janet Wyatt, all of Evansville; Ann Greenfield of Poseyville; and Margaret Vogel of Mt. Vernon.

Because Mrs. Weinzapfel has shared many of the experiences of the women she is seeking to serve through educational programming, she is uniquely qualified to guide the program. She holds both the bachelor's and master's degrees, and has already had one career as a teacher, from which she paused long enough to raise six children. During that period of "unemployment", she extended her talents in community service to civic organizations such as the League of Women Voters, the Young Women's Christian Association, HOPE of Evansville, and Youth Attention Projects.

With more involvement in employment and education, women have found it necessary to place emphasis on defining priorities. As Mrs. Weinzapfel re-enters the world of work and education, she reflects on her experience in juggling home, family, and career: "I believe some things are unnecessary," she laughs, "things like gourmet dinners and sewn-on buttons".

Elizabethan Christmas Dinner:

A CAMPUS TRADITION

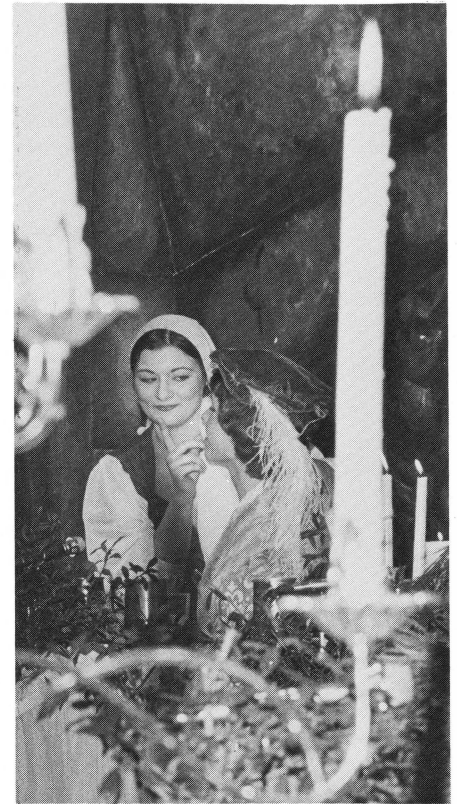
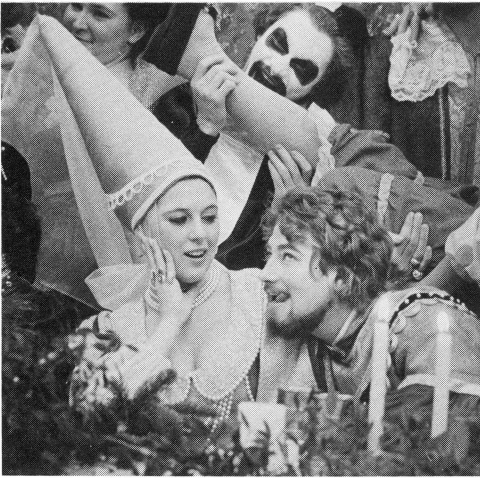
The ISUE campus was transformed into a traditional 16th Century English manor as guests gathered for the Elizabethan Christmas Dinners held December 3, 4, and 5. The Christmas Dinners, which have become a tradition in the Tri-State area during the past six years, portrayed the colorful pomp and ceremony of *Merrie Olde England*.

Guests dined on wassail, beef and barley soup, roast beef, baked potato, green beans, cranberry salad, and plum pudding.

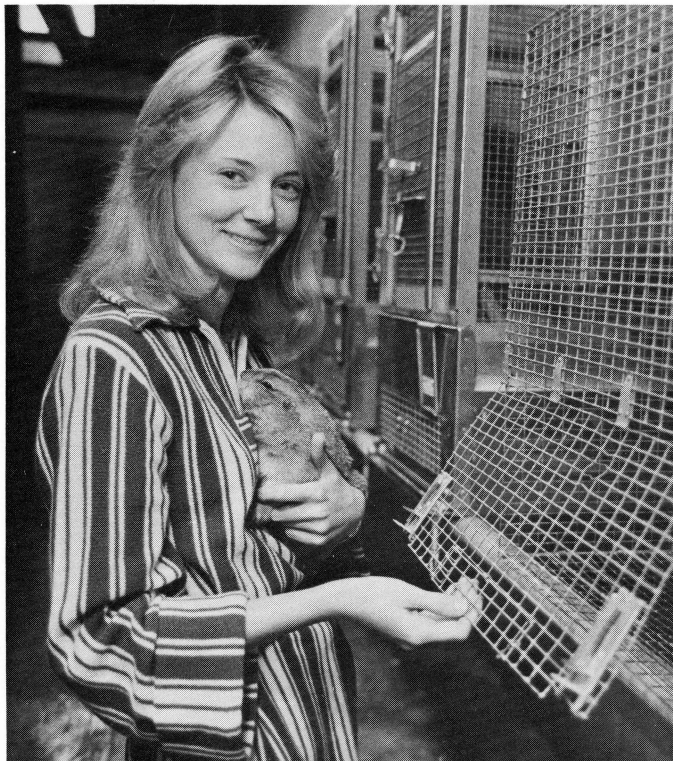
A brass quintet heralded each course, as the audience was treated to the splendor of

the entrance of the wassail and toasts, procession of the boar's head, entrance of the flaming pudding, and the singing of carols and madrigals drawn from the Medieval and Renaissance periods.

The Elizabethan Christmas Dinners were presented by the ISUE Mid-America Singers costumed in elegant finery of the period. The Dinners are directed by Jon Carlson, Assistant Professor and Director of Music. Decorations were provided by the Evansville Women's Club.



HER OFFICE IS A ZOO



Rhonda Figg, Associate Curator of Education at Mesker Zoo.

By Kathy Funke

Persons may claim their office is a "zoo" at times, when harried individuals and deadlines make up their day. Rhonda Figg's office actually is a zoo, for she serves as Associate Curator of Education at Mesker Zoo in Evansville, Indiana. And she wouldn't want to be in any other environment.

Rhonda is a 1975 graduate of ISUE who majored in biology. With her science degree, Rhonda was planning for a job associated with animals. When the position of Associate Curator of Education at Mesker Zoo became available last September, Rhonda was interviewed and eagerly accepted the position.

Despite an allergy to animal fur and feathers, (Rhonda is on a daily dose of

allergy pills) she likes the close association with animals which her position allows.

As Associate Curator of Education, Rhonda is responsible for the educational aspects of Mesker Zoo. She prepares the copy for the information signs which accompany each animal exhibit. She also prepares and maintains educational displays throughout the zoo. An exhibit in the Kley building, with which Rhonda assisted, shows the food prepared for the animals in the zoo's kitchen. The display carries the various types of food prepared for the zoo's baby animals and the varieties of meal and grain on which the mature animals feast. A monitor set up in the display allows visitors to see how the food is prepared in the

kitchen facilities. She also has completed a display about amphibians.

Her current project is arranging a display showing the similarities between the arm of a man, the wing of a bat, the fin of a porpoise, and the front leg of a Shetland pony. To illustrate the bone structure, Rhonda is constructing bones out of Playdough. Rhonda explains, "The Playdough dries white, and is ready for display. Any clay I would use would have to be painted to simulate bones." When asked about her artistic talents, Rhonda laughed and said, "I am a terrific tracer. I develop the ideas for the displays, but the staff artist, Kathy Jourdan does the actual art work."

Display signs will be even more in demand when areas currently under renovation are finished and animals are re-grouped according to geographic areas rather than in categories or species.

In her capacity, Rhonda is also responsible for keeper-training classes, which she organizes and helps teach. Zoo keepers are trained in how to feed the animals and methods of cleaning the cages. They also are trained to watch the social behavior of the animals, especially to note when mating behaviors develop. Keepers maintain a daily log on the animals.

Does Rhonda have much actual contact with the animals at Mesker Zoo? Almost more than she wants at times. When a zoo keeper called her office in the middle of the afternoon one day, with the news there were tapeworms in the Celebes Ape's cage, Rhonda went to the building to get samples from the ape's cage, seriously doubting the existence of tapeworms.

Neighboring monkeys in cages next to the Celebes Ape became excited when Rhonda went into the ape's cage. Monkeys do not like women, according to Rhonda. The Wanderoo Monkey grabbed her hair and the Capuchin Monkey her trouser leg, leaving Rhonda in the middle calling for help.

Another zoo professional, extremely tickled at the site of Rhonda and the monkeys, rescued her after seeing the

dilemma by slapping the Wanderoo's hands. Both monkeys let go of their grip. Rhonda explained that little real danger existed, but she might have been bitten by one of the monkeys if she had tried to pull away.

Rhonda acquaints school children with the animals in the zoo through slide presentations she prepares. Recent shows concentrated on endangered species and the difference between horns and antlers. Rhonda also works with Girl Scouts and Boy Scouts in projects related to the zoo.

In other educational activities, Rhonda works with the Junior League of Evansville to update material about the zoo which is used for tour guide information. Members of the Junior League give tours for interested groups and school children.

The zoo's busiest times are quite naturally in the spring and summer. One of the popular spots in the season is the Children's Contact Area, a special section of the zoo where children have the opportunity to pet and feed certain animals. Rhonda assists with the coordination of the Children's Contact Area and often is on duty helping children learn about the animals.

Other special days arranged at Mesker Zoo are the Children's Art Fair, an activity of the Ohio River Arts Festival and Milk Day, sponsored by American Dairy. Both activities are centered around children, giving them an awareness of the zoo animals.

One of the first requirements for working at a zoo is a love of animals. And Rhonda is no exception. Her contact with animals began at her grandfather's farm. "But the animals on his farm were domestic animals. The zoo is a totally different world."

The love of animals is easy to spot in Rhonda Figg, whether she is petting the prairie dogs or watching the female Hoolock Gibbon Ape swing from wooden poles with her three-week old baby clutching her. "I just love to watch the animals. People enjoy the zoo, and come mostly for entertainment. If we can teach them something while they are here, then that's the extra bonus I like to see."

the GRADUATE ROUNDUP

The Graduate Round-Up features alumni of Indiana State University Evansville who are making noteworthy contributions in their respective fields. Information is gleaned from the Alumni Information Card, friends of alumni, and the Alumni Association officers and Executive Board. Alumni are invited and encouraged to record their accomplishments on the Alumni Information Card (found on the next page) and return it to the ISUE Office of Alumni Affairs.

1971

JERRY AUSENBAUGH, who majored in marketing, is now employed with Globe Master Tools as a Sales Representative.

1973

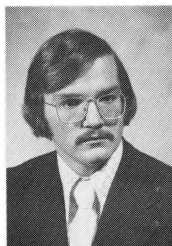
KERRY HIGGS, a marketing major, is a Buyer for Anaconda Aluminum.

DEBBIE DUNNING JOHNSON, who majored in communications, is now employed as the Public Relations Coordinator at Welborn Hospital.

LOLA STUCKI recently became the bride of Greg K. Baumgart. Lola is a Dental Assistant for Drs. Nevill and Schymick in Evansville.

SAMUEL E. SETTLEMOIRE, a business graduate, and the former **LYNNE SWAILS** were recently married. Lynne is employed as a teacher with the Evansville-Vanderburgh School Corporation.

MIKE WOODS, a management major, has accepted a position with the Burroughs Corporation as a Marketing Representative.



1974

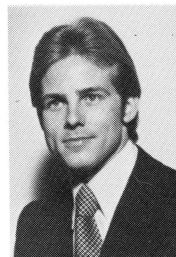
DEBORAH BRACK, an elementary education major, has accepted a teaching position at Newburgh Elementary School.



KENNETH A. HENSON has completed the requirements for a M.S. degree in psychology at the University of Evansville. He is currently employed by the Vanderburgh County Circuit Court as Supervisor of the Work-Release Program.

JOHN W. HOGGARD has completed all four parts of the May uniform CPA exam in Indiana. John is a Profit Planning Analyst for the American Fletcher National Bank in Indianapolis.

SCOTT R. NOAH is an Account Executive for Keller Crescent Advertising Company. Scott is married to the former Janis Yeiser.



JAMES B. SCARLETT was recently married to the former Connie Blesch. Jim is employed as a teacher and coach at Slaughter Elementary School in Kentucky.

KATHY SITZMAN was recently married to Robert W. Scheller. Kathy received a dental assisting certificate from ISUE.

1975

LINDA DOGAN BAILEY, a Spanish major, has accepted a teaching position in the Omaha Public School System.

DEBRA CANTERBURY has married Gary L. Virgin. Debra is a substitute teacher with the Evansville-Vanderburgh School Corporation.

THOMAS CLINTON was recently promoted to Managing Editor of *The Evansville Courier*. Tom was a political science major at ISUE.

SHERRI HARTZ was recently married to Michael Allgood. Sherri is an elementary education teacher in the Evansville-Vanderburgh School Corporation.

BRUCE L. McCAIN, a marketing major, is employed at Gold Medal Wholesale Company. He and the former Patricia Wolf have married.

ROBERT G. MEYERS was recently married to the former Pamela Robards. Robert is employed by George S. Olive & Company as an Accountant.



JOHN D. MORRIS was married in late summer to Fonda Huntsman. John was a member of Tau Kappa Epsilon fraternity.

CINDY HENDRICKSON PHILLIPS is a Certified Dental Assistant and is employed by W.H. Damm, D.D.S.

RONALD M. STEWART was recently married to the former Karen Bitz. Ron is employed with Burroughs Corporation in Antioch, Tennessee.

DELORES PRITCHETT STRUPP, a management major, is employed in production control at Bernardin, Inc.

1976

CARLISS BECKER, a secondary education major, was married to Richard C. Rust.

RICHARD CAMPBELL, an accounting graduate, has accepted the position of Assistant Controller at the First City Bank in Hopkinsville, Kentucky.

CHARLES CRABTREE, a communications graduate, has accepted a position with John Hancock Insurance as an Insurance Agent.

SANDRA GLASCOCK, a psychology major, is a Counselor at the Alcoholic Recovery Center in Evansville.

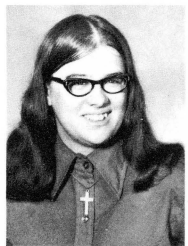
LAUREL HESS and David A. Gibson were recently married. Laurel was an elementary education major.

JANE GOEDDE, a chemistry major, has accepted a position as Quality Control person with Fiberfil Corporation.

JAN GORDON, a psychology major, has accepted a position with the Human Relations Commission of Evansville as a Human Relations Specialist.

DANIEL L. GREER recently married the former Kimberly Jones. Dan was a marketing major and is employed by Sears Roebuck and Company.

BRENDA HANES was recently married to Gary Waters. Brenda graduated with a degree in elementary education.



DANIEL L. HOESLI, who majored in psychology and management, has the title of Operations Manager-Treasurer for Ted Hoesli Diesel Service, Inc.

JACK KEEGAN, a general business graduate, is a Sales Representative for Lincoln National Sales.

GAIL KELLEY, an accounting graduate, has accepted a position with Umbach & Vowells CPA firm.

CLAUDETTE KIRTLEY, an elementary education major, has accepted a position with Mead Johnson & Company as a Contract Manufacturer Auditor.

KATHY KOCHERSPERGER, an accounting graduate, has taken a position with Peat Marwick Mitchell accounting firm in Indianapolis.

RICHARD McKASSON was married to the former Vicki Yunker. Richard was a sociology major at ISUE.

DEBRA MOORE was married to Werner A. Mueth on September 26, 1976. Debra is a Teller at National City Bank in Evansville.

MARTHA L. PETERS, a chemistry major, has accepted a position at ISUE as Science Storeroom Supervisor.



LANA RADEMACHER, a chemistry major, has accepted a position as Assistant Scientist at Mead Johnson & Company.

LINDA RUEGER was recently married to Dale Strupp. Linda received a degree in accounting and is employed with Umbach & Vowells CPA firm.



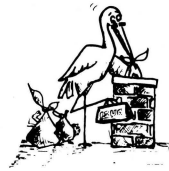
PHIL SMITH, a marketing major, has accepted a position as Territorial Manager with the Burroughs Corporation.

ALAN STABENFELDT, an accounting major, has accepted a position with Kotis, Stephens, Naus & Company accounting firm in Evansville.

JEFFREY WELLS, a graduate in marketing, is a Sales Representative for the Xerox Corporation.

MONSERRATE WOELER, a Spanish major, has accepted a position at Bosse High School teaching Spanish.

Alumni Additions



IMOGENE SCHMITT KURRE '73 and husband Donald, a daughter, Jessica Ann, born October 22, 1976.

KERRY W. HIGGS '73 and wife Janis, a son, Brandon Wayne, born December 2, 1976.

PAULETTE WILSMAN MILLER '73, and husband Michael, a daughter, Michelle Elizabeth, born May 31, 1976.

BEVERLY ZEHR '73 and husband DWAIN '71, a daughter, Emily Rebecca, born December 27, 1976.

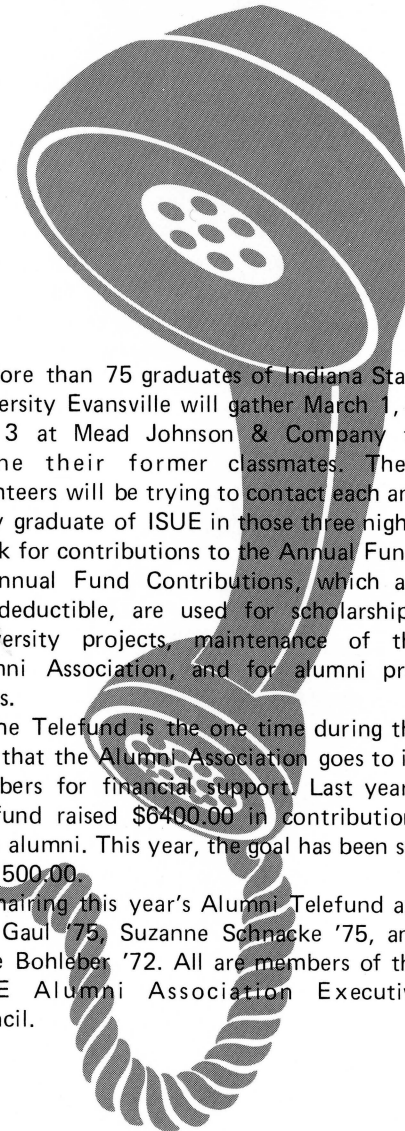
ROGER BUENTE '73 and wife Peggy, a son, Jarod Matthew, born July 21, 1976.

PAULETTE CLEVINGER '75 and husband Bruce, a son, Bryan Billups, born July 1, 1976.

OMA HART '75 and wife Mary, a daughter, Emily Ruth, born July 2, 1976.

MELBOURNE M. KREMER '73 and wife Linda Sue, a son, Ryan Michael, born July 1, 1976.

TELEFUND PLANNED BY ALUMNI ASSOCIATION



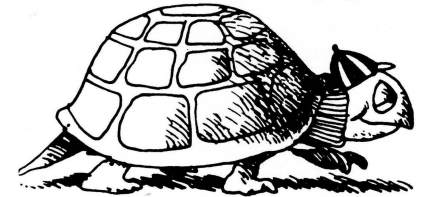
More than 75 graduates of Indiana State University Evansville will gather March 1, 2, and 3 at Mead Johnson & Company to phone their former classmates. These volunteers will be trying to contact each and every graduate of ISUE in those three nights to ask for contributions to the Annual Fund.

Annual Fund Contributions, which are tax deductible, are used for scholarships, University projects, maintenance of the Alumni Association, and for alumni programs.

The Telefund is the one time during the year that the Alumni Association goes to its members for financial support. Last year's Telefund raised \$6400.00 in contributions from alumni. This year, the goal has been set at \$7500.00.

Chairing this year's Alumni Telefund are Jeff Gaul '75, Suzanne Schnacke '75, and Steve Bohleber '72. All are members of the ISUE Alumni Association Executive Council.

MOVING?



LET US KNOW!

Please notify the alumni office of any address changes so that we can correct our records.

Alumni Information Card

Please complete the Alumni Information Card with updated material and send to Director, Alumni Affairs, ISUE.

NAME _____

ADDRESS _____

CITY _____ State _____ Zip _____

Present position (list title and date you started this position):

Recent personal information (Include marriage, births, awards received, business promotions, and other pertinent personal information.)

Year graduated and major field of study.

HARPER JOINS ISUE AS UNIVERSITY COUNSELOR

Robert Thomas Harper assumed the post of University Counselor at ISUE January 3, filling a vacancy created in September when Timothy Buecher resigned to become ISUE Director of Admissions.

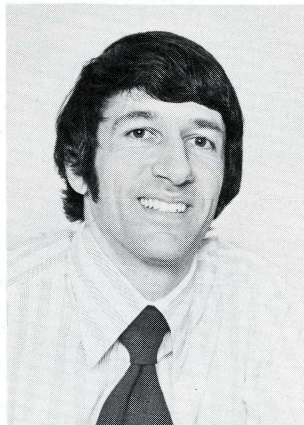
Harper, age 30, comes to Indiana State University Evansville from the University of Evansville, where he had been coordinator of the Harlaxton Admissions and Associate Director of Admissions. He had served in other capacities there, including Assistant Director of Admissions and Admissions Counselor. Except for a two-year interruption to serve in the United States Army as a personnel specialist in Alaska, Harper has been employed by the University of Evansville since July 1968.

He holds the Bachelor of Science in Business Marketing and the Master of Arts in Education, with a concentration in guidance and counseling, from the University of Evansville. While an undergraduate student, Harper was a member of Pi Sigma Epsilon business marketing honorary fraternity and of Lambda Chi Alpha social fraternity, which he presently serves as Chapter Advisor and Alumni President.

Active professionally, Harper is a member of both the Indiana and the National Associations of College Admissions Counselors. He has worked with the Volunteer Court Counseling Program and as a Group Leader for the Transactional Analysis Court Counseling Group.

As University Counselor, Harper will direct activities of the ISUE Counseling Center which provides professional counseling services to students of the University. The services include academic counseling, career guidance, personal counseling, and psychological testing programs. In addition, the Counselor works with other administrators in planning programs such as orientation and career development.

Dr. Donald Bennett, Vice President for



Administrative Services, said of Harper's appointment, "We feel indeed fortunate to be able to fill this position with an individual who has such a strong background in counseling and experience in working with college students."



8600 University Boulevard

ISUE Magazine
8600 University Boulevard
Evansville, Indiana 47712

HOMECOMING 1977

SATURDAY, FEBRUARY 12
ISUE ARENA

5:45 p.m. — ALUMNI PLAYERS vs. TV 25 ALL-STARS

8:00 p.m. — ISUE SCREAMING EAGLES vs. OAKLAND CITY
Queen Coronation during Half-time Ceremonies

POST-GAME RECEPTION FOR ISUE ALUMNI AND
GUESTS IN THE VARSITY CLUB ROOM

10:00 p.m. to 1:00 a.m. — HOMECOMING DANCE AT
EXECUTIVE INN FLORIDA ROOM

Music by Sweet Thunder

Tickets available at door

Non-Profit Org.
U. S. POSTAGE
PAID
EVANSVILLE, IND
PERMIT NO. 1675

Address Correction
Requested