

Indiana State University Evansville Magazine

Volume IV No. 1 September 1975

8600 UNIVERSITY BOULEVARD

In This Issue

ON THE COVER. An aerial view of the campus from the southeast corner shows in a grand sweep the campus complex. A campus open house, scheduled for October 12, 1975, will allow visitors to see the campus facilities first hand.

Student Leaders Plan Busy Year	3
New Alumni Staff	4
Alumni Association Committees	4
First Reunion Planned	5
Seniors Receive Scholarships	5
"To Maintain Persons At Their Best Potential"	6
Engineering Technology Curriculum Approved	7
Non-credit Community Service Courses	7
The Graduate Round-Up	8
Alumni Additions	9
Institute Begins Third Year	10
Sports Notes	11
Your Rights As A Former Student	11
News Around Campus	12

8600 UNIVERSITY BOULEVARD

8600 University Boulevard is published Winter, Spring, Summer, and Fall by the Office of the President, Indiana State University Evansville, Evansville, Indiana 47712. Second class postage paid at Evansville, Indiana. Please send form 3579 to the Office of the President, ISUE, 8600 University Boulevard, Evansville, Indiana 47712.

Volume 4 No. 1 September, 1975

Readers are invited to respond to content in the form of letters signed and addressed to the editor.

EDITOR

Kathy Will

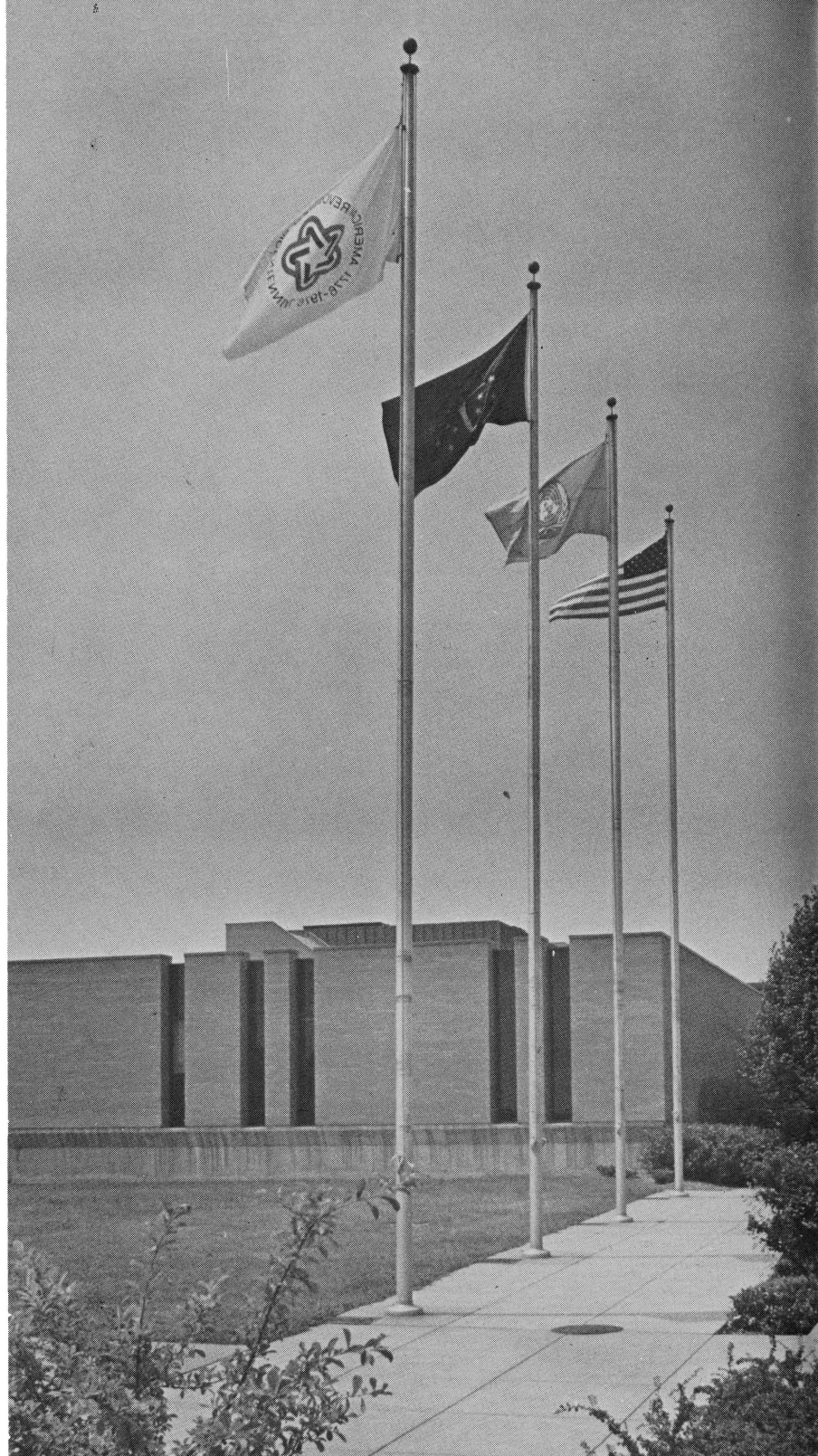
ARTIST AND PHOTOGRAPHER

John Dawson

CONTRIBUTING EDITORS

*Julie Gaul
Ralph Kent*

ISUE Celebrates the Bicentennial. The Bicentennial flag flies over the campus along with the United States flag, the United Nations flag and the Indiana flag. The flag display, a gift of VFW Post 1114 when the Mid America University Center was opened in 1969, symbolizes the goal of public higher education to serve the state, the nation, and the world.



STUDENT LEADERS PLAN BUSY YEAR

by Julie Gaul

As August rolls around on the calendar each summer, college students across the country begin to prepare for the upcoming school year. There are clothes to buy, books to purchase, courses to register in, and classmates to get back in touch with after a long summer vacation. However, while the majority of students are enjoying their summer break with very few thoughts of school, there are a handful of students devoting much of their time to planning for the future academic year. At Indiana State University Evansville, three students have key roles in shaping student activities and student life for this year. They are Billie Kuester, President of the Student Government Association, Will Smith, Editor of the Shield, the student newspaper, and Terry Stumpf, President of the Student Union Board.

A very active member of the student body, Billie Kuester has participated in many campus organizations. She presently holds the offices of President of the Student Government Association and President of the Accounting Club. She is also a member of the Management Club, a student member of the National Accounting Association, and has served on the Committee on Accounting Seminar. In addition to her University related activities, Billie is a member of The Southwestern Indiana Status of Women Association.

Billie, an Accounting major at ISUE, plans to graduate in May, 1976. Since the beginning of her academic career, she has been awarded three scholarships: the Indiana State Scholarship, the Women of ISUE Scholarship, and the American Business Women Association Scholarship. She has also been a recipient of the Educational Opportunity Grant.

Billie and her husband, Pat, who is self-employed and a part-time student, hope to move to Indianapolis soon after graduation, where Billie plans to seek employment as an accountant. Her career goal is to eventually have an accounting firm of her own.



Active in ISUE student life, Terry Stumpf, (left) President of the ISUE Student Union Board, Will Smith, Editor of the Shield, and Billie Kuester, President of the Student Body work together to organize activities and student affairs at ISUE.

When asked about the Student Government Association and its plans for 1975-76, Billie commented that the main objective of the organization is "to give the students a chance to voice their opinions about the management of the University. It gives them a channel through which to make changes in the administration." Some of the goals set by the S.G.A. for the upcoming year include placing a marquee near the entrance of the University, which would advertise events taking place at ISUE, and establishing a suggestion box, so that S.G.A. will be more aware of the ideas of the student body. Billie feels it is important to post S.G.A. activities and meetings, so that students are well-informed of the organization's activities. She also plans to initiate a drive to involve more students in committee work.

Shield editor, Will Smith, a Communications major, plans to graduate from ISUE in May, 1976. After graduation, he intends to begin working on a Masters degree in Communications. Will was named Editor of the Shield, a position which he comes to with considerable experience. Will was a staff

member and writer for the Shield during the 1974-75 year, and prior to that, was a reporter for the Shield.

Will perceives the Shield as a "vehicle for getting timely events to the student body." He finds it an important task to keep students up-to-date on events involving them at the University. Will's main objective for this year is to "spur an interest in the student body to initiate more events."

Terry Stumpf holds a very important position as President of the Student Union Board, as he has the final say on all activities planned for the students this year. Terry will graduate in May, 1977 with a major in Sociology and a minor in Psychology.

Terry served as Recreation Chairman of the Student Union Board last year and has been active in intramural basketball and baseball for the past two years. In addition to his extracurricular activities at school, Terry has coached the fifth and sixth grade basketball teams at West Side Consolidated School for the last five seasons.

Terry's future career plans point toward law enforcement. He intends to enroll in the law enforcement program at Indiana University after graduation, and later work with juvenile delinquents as a parole officer.

"With an increase in the budget for 1975-76, the Student Union Board has a variety of activities planned," comments Terry. "Some of the events you'll see happening on campus will include Coffee Houses at the Pyramid Lounge, the Yellow Pages Series involving twenty career speakers, two major lectures or art programs, Halloween Madness, Homecoming, films, concerts, dances, the Eagle Gran Prix, Spring Week, and Spring Formal."

With student leaders like Billie, Will, and Terry, who are very devoted to their responsibilities as student leaders, 1976 should prove to be a very good year!

INTRODUCING A NEW ALUMNI STAFF

Elementary School in Mt. Vernon, Indiana. Dr. Emhuff organized the first alumni office and implemented many programs for Indiana State University Evansville Alumni, including Homecoming activities and the annual Alumni Banquet.

Ralph Kent, formerly Assistant Registrar at ISUE, has been named Director of the office. Mr. Kent has been associated with alumni affairs since 1971. He was the first president of the ISUE Alumni Association, having graduated in the first class at the University in 1971. Mr. Kent received his masters degree from the University of Evansville. Active in community affairs, Mr. Kent is serving on the Bicentennial Tribute Committee, and is a member of the Tri-State Health Planning Council. He is past president of University Jaycees. He holds membership in many professional organizations including College Placement Council, American

The Office of Alumni Affairs and Career Placement has a new director and secretary. Dr. John Emhuff, Director of Alumni Affairs and Career Placement since 1973 and with ISUE since 1970, resigned to accept the position of principal at Hedges



ISUE Alumni Association President Dennis Orsburn, left, presents President David Rice with a check, the third installment on a pledge of the Alumni Association to the ISUE Donor Recognition Program. Alumni raised \$3,000 to support the fund.

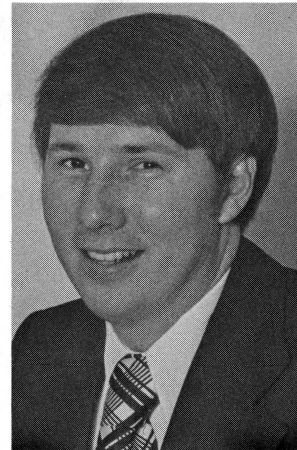


Dr. and Mrs. John Emhuff participate in Alumni Banquet applause. Dr. Emhuff resigned as Director of Alumni Affairs and Career Placement to accept the position of Principal at Hedges Elementary School in Mt. Vernon, Indiana. The Alumni Association recognizes the quality leadership and service Dr. Emhuff gave to the young organization, and wishes him well in his new position.

Management Association, American Society for Personnel Administration and Evansville Personnel Association to name a few.

Mrs. Elizabeth Buck, former secretary to Dr. Emhuff, has also resigned. She has worked at the University for two years. Mrs. Marilyn Barefoot has

accepted the position of secretary to Mr. Kent. A native of Lafayette, Indiana, Marilyn and her husband, Thomas, a legal aid attorney moved to Evansville in the spring of this year.



Ralph Kent

OFFICERS NAME COMMITTEES

ISUE Alumni Association President, Dennis Orsburn, has named nine alumni to the 1975-76 Executive Council. Those appointed to positions are Carol Claybourne, Steve Collins, Charlie Farmer, Pat Hinkle, Jim Jaquess, Tom Kaiser, Frank McDonald, Jr., and Robert Roeder. The Executive Council determines policies and procedures for the Alumni Association.

An Advisory Board, made up of ISUE faculty-staff, was also appointed by Mr. Orsburn. Persons serving in that capacity are Donald Bennett, Vice-President for Administration; Sam Blankenship, Assistant Professor of Business; John Deem, Registrar; John Gottcent, Associate Professor of English; Janet Greer, Instructor of Education; Gordon Kelley, Director and Associate Professor of Allied Health Science, and Director of Dental Auxiliary Programs; Daniel Miller, Chairman of the Division of Social Science and Professor of History; Robert Reid, Vice-President for Academic Affairs; David Rice, President of Campus; Frank Stanonis, Chairman of the Division of Science and Math, and Professor of Geology/Geography; Tony Tillmans, Director of Technology Programs, and Professor of Technology; Kathy Will, Assistant to the President; and Byron Wright, Vice-President for Business Affairs. Persons on the Advisory Board serve as resource persons for the Alumni Association officers and Executive Council.

Elected to terms of office along with Mr. Orsburn were Bill Burgdorf, Vice-President, Connie Romain, Secretary, and Joyce Crabtree, Treasurer.

FIRST REUNION PLANNED

The ISUE Alumni Association officers anticipate an activity-filled year with the first five-year class reunion highlighting the year in the spring semester. Details of reunion activities will be available in future issues of **8600 University Boulevard**.

Monthly activities include an alumni breakfast, Homecoming, area receptions, the annual fund campaign, and the annual alumni banquet.

In October the ISUE Alumni Association, the Division of Education, and the ISUE Foundation will sponsor the Teachers Breakfast. The breakfast provides the opportunity for teaching alumni to tour new facilities on campus, to meet new personnel, and get reacquainted with some of their former classmates. ISUE faculty will be available to discuss teaching trends and classroom techniques.

In early November a reception is being held for ISUE alumni living in the Indianapolis area. Hosts

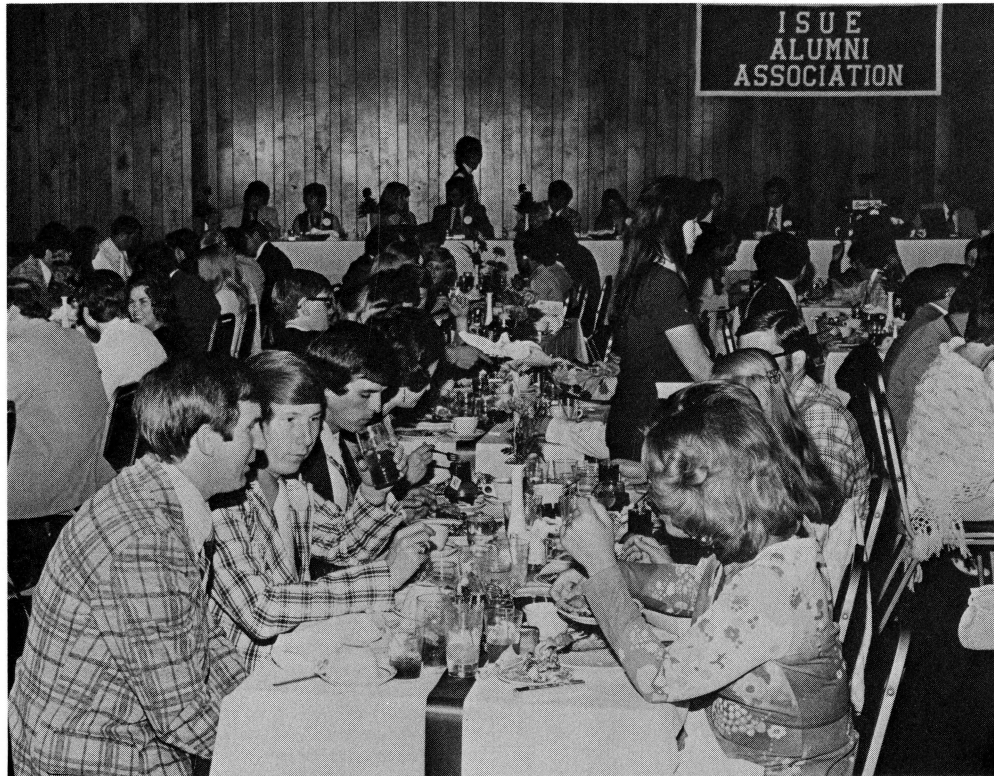
for the reception are Bob and Mary Ann Roeder of Indianapolis.

December will take the ISUE Alumni Association to Chicago for a reception for the Chicago area alumni. Alumni living in the Chicago area have increased in the last year. Officers and members of the Executive Council will be at the Chicago reception.

In January a proposed athletic trip for alumni and friends is being planned. If an alumnus has suggestions as to a place or event, please drop the Alumni Office a letter.

This year's Homecoming activities are scheduled for February 14, 1976. The ISUE Eagles will meet the Oaks of Oakland City College in ISUE Central Arena. The Homecoming reception will follow the game.

The Athletic Department will provide one free



New Alumni Feted. Graduates were honored at the Annual Alumni Banquet and inducted into the ISUE Alumni Association. Over three hundred alumni, friends, and faculty attended the evening dinner dance.



Miss Brenda Lee, popular recording artist, entertained alumni and friends at the Annual Alumni Banquet held last May at the Executive Inn. In Brenda Lee fashion, she made an important evening very special.

ticket to the Homecoming game to each alumnus. Take advantage of this opportunity to see the Screaming Eagles in action!

March brings the Annual Fund drive which will be kicked off by the Telefund. Area Alumni will be asked to help telephone other alumni for contributions. The campaign will be launched from the Alumni Office on the ISUE campus. The Annual Fund Drive this year was a tremendous success, and we are anticipating another outstanding year.

In April we will have a joint Officers, Executive Council and Advisory Board meeting to evaluate the year's progress.

May will wind up the year's activities with the Annual Alumni Association banquet at the Executive Inn.

Alumni will receive special mailings on each event, giving full details as to time and place.

SENIORS RECEIVE SCHOLARSHIPS

Two ISUE seniors, Richard Galbreath and Louie Wildeman, have been named recipients of the Alumni Fund Scholarships for 1975-76.

Richard Galbreath, a Political Science major, plans to graduate in December, 1975. Maintaining an outstanding grade point average, Richard has been named to the Honors List consecutively for the past five semesters.

A very active member of the student body, Richard presently holds the office of Chief Justice of the ISUE Supreme Court. He has formerly held the offices of Freshman Senator and President of the Political Science Forum, and has served on the Residents Appeals Committee and the Student Conduct Appeals Committee. Richard was active in Alpha Omega Psi fraternity for two years and is presently a member of the History Club.

Besides being very active in service to the University, Richard was a member of the Tri-State Mental Health Planning Commission in 1971, and is presently working as an intern for the Evansville Police Department.

Richard's plans for the future will include either law school or graduate work in Political Science, as he is interested in both the professions of law and teaching.

Louie Wildeman will also graduate from ISUE in December, 1975 with a major in Accounting and a minor in Management. Some of the honors he has received during his academic career include being named to the Honors List, being awarded an Educational Opportunity Grant for 1972, and being named to Who's Who Among Students in American Universities and Colleges for 1974-75.

Louie has been active in intramural sports, both football and basketball, for the past three years, and plans to play football again this season. He has devoted a great deal of time to the Student Union Board, serving as Co-Chairman of the Eagle Gran Prix in 1973, Vice-President for 1973-74, Films Chairman for 1974-75, and has been appointed Co-Chairman for Halloween Madness this fall. Louie is also affiliated with the Accounting Club and the University Jaycees.

Following his graduation in December, Louie plans to seek an accounting position in Evansville, while beginning work on a Masters degree in Business Administration.

Each year the Alumni Association awards two scholarships to outstanding ISUE students. The students must be in good standing with the University, have a minimum grade point average of 3.0, and must have completed between 63 and 93 hours of credit. The Alumni Association Executive Council chooses students on the basis of academic achievement, service to the University and community, and financial need.

"TO MAINTAIN PERSONS AT THEIR BEST POTENTIAL"

Service to students is the goal of the entire university, but two offices, above others, exist directly for the well-being of students. These offices are Health Services and the Counseling Center.

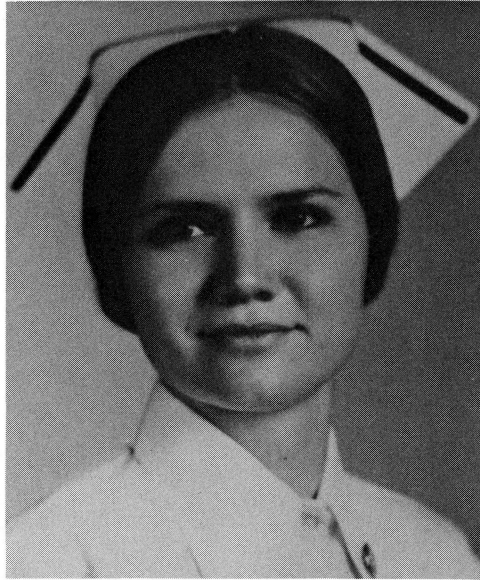
The majority of colleges and universities have health care arrangements, ranging from a part-time licensed practical nurse to a comprehensive health program. ISUE is one of the few regional campuses that has a Health Service.

The main objective of the Health Service is to maintain an individual student, faculty member or staff member at his or her best potential. This includes all areas of physical, emotional, intellectual and social well-being. In order for the Health Service to attain this goal, it must be an intimate part of the university and its basic mission.

The ISUE Health Service plays various roles in health care. First aid and emergency treatment make up a large percentage of the activities of the Health Service. Many people do not realize the amount and variety of accidents that occur on a campus the size of ISUE. The ISUE Health Service has administered first aid for falls from stairs, lacerations or fractures from machinery parts, burns from chemicals or heat, to list just a few instances.

The Health Service also treats minor illnesses such as cold, flu, sore throat, and earache. Specific procedures such as suture removal, cast care, dressing changes and routine allergy injections are performed. A preventative program of immunizations has been initiated so that an individual can, upon request, up-date his immunizations, such as tetanus toxoid. A variety of screening tests are available such as tuberculin skin tests, audiology and speech evaluation, and blood pressure readings. Evaluation and tentative diagnosis with resulting referral to the correct community agencies or appropriate physician may be obtained. Referral to the university physician will be made when necessary, and advice concerning treatments of conditions such as rashes, burns, and blisters, is available in Health Service. Educational materials and referral information concerning such topics as dieting, care of diabetes, abortion, and venereal disease may be obtained through Health Service.

The Health Service is staffed by Mrs. Pat Like, a registered nurse with a Bachelor of Science degree in Nursing. The clinic hours are 8:00 a.m. to 4:30 p.m. Monday through Friday.



Patricia Like
Director of Health Services

Mrs. Like discussed plans of the Health Service. "Whenever I relate to someone the types of services that are available at ISUE, I begin by explaining three principles that are integral to any health service. The first of these is the basic structure of the service. ISUE is a commuter campus, and we do not deal with resident students. This fact limits the needs of our students, because the majority already have an established family physician.

"Secondly, one must consider the populations served by the Clinic. All health service is free to students, faculty, staff, campus visitors, and any children of these persons. Therefore the ages served range from three years to seventy years essentially.

"The third fact one must consider is the type of facilities available, and the personnel staffing those facilities. As the Health Service changes, so will the responsibilities and capabilities of those working there.

"In the future there are plans for the Health Service to become directly involved in the aca-

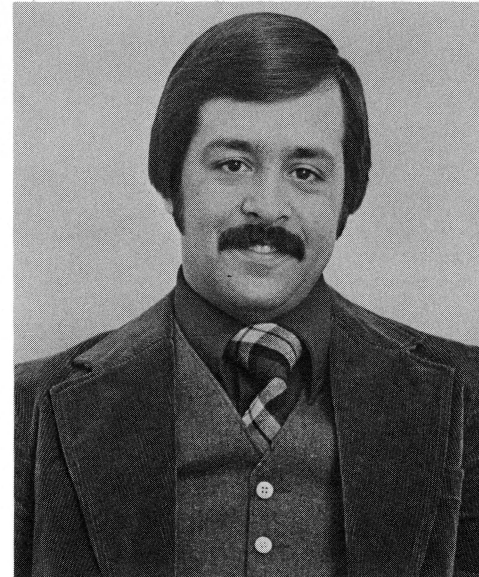
dem portions of the university. The director will endeavor to participate, upon request, in any classes, symposiums, etc., which involve health subjects, first aid and advanced procedures. In addition a 'Dental and Medical Emergencies' Course will be taught, an In-service program for safety officers will be presented, and any other first aid courses deemed necessary will be conducted."

Mrs. Like added, "Personally, I feel that the Health Service has progressed considerably. Since coming to ISUE in Spring of 1973, many new services have been added and an individual student approach has been adopted. The future for the Health Service is continued growth and improvement."

The Counseling Center is involved with providing for professional counseling services, career information and planning, academic advisement and study skills assistance, testing and interpretation, personal/social development group workshops, graduate school information, referral service

to community agencies, consulting service to student organizations and faculty, and ongoing development of other counseling/guidance programs which reflect and serve the needs of individuals and groups within the student body. One example of such a program is the new career-planning course being offered this fall semester, primarily for "non-preference" students and others who may benefit from increased awareness of our various curricula, self-exploration, decision-making skills, and improvement and familiarization with the variety of careers available to them. The University is offering the course on an experimental basis, but if it proves successful, it is hoped that it can become a regular part of the curriculum.

The number of students visiting the Counseling Center and participating in its services is encouraging. The office is making every effort to build an image of student acceptance and confidence in the services they offer, so as not to become stigmatized as some other counseling facilities have inadvertently done. Tim Buecher, Director of Counseling, explains, "We want students to see their participation in the services we offer as evidence of their own motivation for self-improvement and direction in life. This is not only the positive view, but I am convinced that it is also the most effective approach to self-growth and responsible actions." In the Counseling Center, students explore their present and plan their future. They find an accepting, concerned atmosphere which too often is missing, at least temporarily, from daily life. The interviews are held in the strictest confidence, and with that trust, meaningful thoughts and feelings can be expressed more freely. Mr. Buecher added, "Students visit the Counseling Center for a variety of reasons, and each reason is as unique as the person himself. When individuals are treated as individuals, they begin to sense that uniqueness about themselves — and to understand that people can make things happen in their lives instead of letting their lives happen to them."



Tim Buecher
Director of Counseling

ENGINEERING TECHNOLOGY CURRICULUM APPROVED

Student engineering technologists at Indiana State University Evansville will enroll in courses leading to the Associate Degree in civil engineering technology, mechanical engineering technology, electrical engineering technology, and mining engineering technology. The programs received approval on August 8 from the Indiana Commission for Higher Education. Each two-year technology program includes a solid foundation in physics, chemistry, mathematics, and communications. To complement the student's technical education, the programs also require courses in business, humanities, and social sciences.

Students majoring in technology will study the theory and philosophy of technology with emphasis on the practical application of engineering processes and procedures used in industry. The engineering technology program, being an application oriented engineering program, uses both the laboratory and an engineering experienced faculty to attain practical application. The newly opened Technology Center includes these laboratories — strength of materials, soils, concrete, electrical and electronics, fluids, instrumentation, pneumatics and hydraulics, computer, drafting room, wood-working, metal-working, and plastics.

Students in the mechanical engineering technology program will be prepared to assist engineers in the design, production, maintenance and sales of equipment. A mechanical engineering technician solves problems relating to mechanisms and transfer of mechanical power, conversion of energy and other areas relating to energy.

Students of mining engineering technology will be prepared to accept positions between the highly skilled mine technician and the engineer who designs, operates and manages the mines.

The civil engineering technology program will prepare students for careers in the construction industry, public works, consulting firms, and land surveying firms.

The electrical engineering technology program is designed to prepare students to work as engineering technicians in the areas of design, manufacture, service, and sales of equipment related to the power and electronic fields.

Recent employment projects by responsible agencies like the Engineering Manpower Commission indicate that the demand for graduates will continue at about 70,000 per year, whereas less than 45,000 per year will be graduated.

Graduates in the technology field are qualified to accept such jobs as an estimator, detailer, sur-

veyor, inspector, project designer, automatic controls technician, computer technician, technical sales representative, mechanical technician, and intermediate level supervisory positions in areas such as water and wastewater control, coal preparation, mine ventilation, and mineral sampling, to name a few.

Upon completion of the Associate Degree, a student can elect to seek employment or continue an education toward a four-year baccalaureate degree.

In addition to the early return on an educational experience after a relatively short time, associate degree engineering technology programs have a number of strengths: they are diverse in structure, they are application oriented, they appeal to individuals who desire "hands-on" approach, they supply the needs for the nation's technical personpower projections, they provide an educational program with upward mobility as the main goal, they offer courses preparing the student to understand the technology which is responsible for our way of life, and they support many other technological activities.

Engineering Technology will offer courses in day and evening sessions. Although all courses will be part of the curriculum leading to the Associate Degree, it is not necessary to be a degree seeking student to enroll. Persons interested in either upgrading the state-of-the-art, taking a course for general interest, trying a course on-for-size with possible interest in degree seeking status, or enrolling in the degree status from the outset, can enroll in Engineering Technology at ISUE.

Dr. Anthony Tilmans has been appointed Director of Engineering Technology Programs and Professor of Engineering Technology at ISUE. A native of Pennsylvania, Dr. Tilmans received his Ph.D. in civil engineering from Carnegie-Mellon University and his masters and baccalaureate degree from the University of Pittsburgh. Before joining ISUE, Dr. Tilmans was head of civil engineering technology and assistant to associate dean for

engineering technology at University of Pittsburgh at Johnstown.

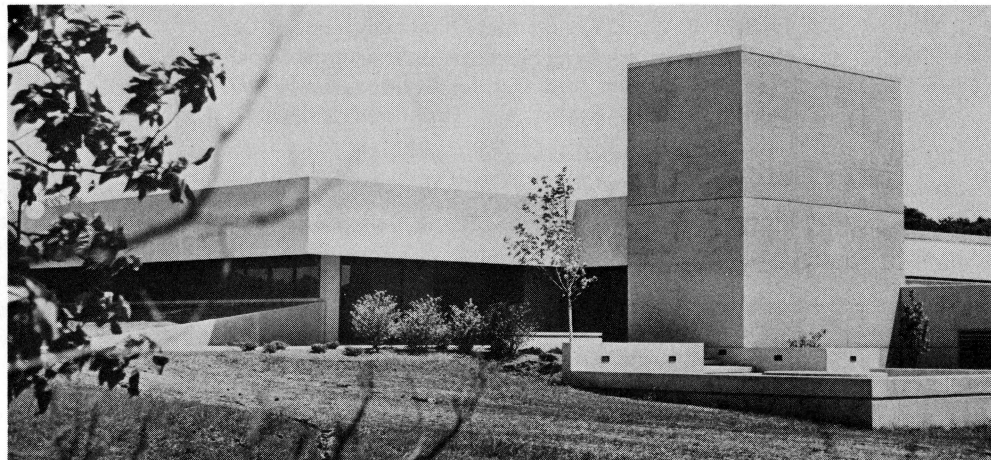
Three faculty members have been appointed to positions on the Engineering Technology faculty. They are Leonard Cook, Assistant Professor of Engineering Technology; Larry Goss, Associate Professor of Engineering Technology; and Andrew Tershak, Associate Professor of Engineering Technology.

A graduate of University of Pittsburgh with a Master of Science in Mechanical Engineering degree, Mr. Cook's experience includes fifteen years of work with PPG Industries with most recent experience as Senior Engineer. A native of Ford City, Pennsylvania, the Cook family is moving from New Kensington, Pennsylvania. Mr. Cook will be teaching mechanical engineering technology.

Mr. Goss, of Chesapeake, West Virginia, was Chairman of the Department of Engineering Graphics at West Virginia Institute of Technology prior to coming to ISUE. His teaching experience also included a faculty position at Oklahoma State University for five years. Mr. Goss received his bachelor's degree from the Illinois Institute of Technology in production design and his masters degree from Purdue University in household equipment design. Mr. Goss will be teaching in the area of drafting and design.

Andrew Tershak has joined the Engineering Technology faculty in the electrical area. Prior to his acceptance of this position, Mr. Tershak was coordinator of Electrical Engineering Technology and Associate Professor at the University of Toledo where he taught since 1967. Since 1968, Mr. Tershak has also been self-employed as a consultant working primarily in the electrical-electronic control area as applied to transportation systems.

Mr. Tershak received the bachelor's degree in electrical engineering from Tri-State College in Angola, Indiana. In 1971, he graduated with a masters degree in electrical engineering from the University of Toledo.



The Technology Center houses classrooms and laboratories for the engineering technology curriculum, along with Media Services, broadcasting equipment and studios, and institutional printing.

non credit community service courses

"In its first ten years of operation, Indiana State University Evansville has been intent on establishing the traditional academic program for the four-year degree-seeking student. Although ISUE will continue to modify existing programs and add new programs in response to the needs of the region, that initial phase of program development has stabilized. We are now into the next phase of development which includes increasing the college-level educational opportunities for others in the community through programs in continuing education," explains M. Edward Jones, Director of Continuing Education at ISUE. "We are planning to reach the housewives, working adults, senior citizens, members of professional groups, or anyone not classified as a traditional student."

Continuing Education offerings this fall include community service classes, classes designed for women, a special inter-disciplinary Bicentennial course, credit courses by television, and a number of workshops.

The community service classes are offered on a non-credit basis. Non-credit classes provide an opportunity to learn in an area of specific interest without the formal admissions procedures or the pressures of testing and grading of regular credit courses. Open to anyone, regardless of educational background, the courses are presented in a non-competitive, informal atmosphere where interest in learning is the primary consideration.

Community services courses offered this fall include House Plants, Beginning Tennis, Understanding The Metric System, Judging Woman's Gymnastics, Basic Interior Design, Reading Improvement, Genealogy, Children's Gymnastics, Consumer Economics: Making Money Work For You, Officiating Men's/Women's Basketball, Silk-screen Your Own Christmas Cards, Black And White Photography, Death and Dying, Transactional Analysis, Communication, Family Financial Planning, Getting The Most For Your Food Dollar, and Creative Writing. Courses will begin in late September or early October. Descriptive brochures and mail registration forms are available upon request from ISUE Office of Continuing Education.



the GRADUATE ROUNDUP

The Graduate Round-Up features alumni of Indiana State University Evansville who are making noteworthy contributions in their respective fields. Information is gleaned from the Alumni Information Card, friends of alumni, and the Alumni Association officers and Executive Board. Alumni are invited and encouraged to record their accomplishments on the Alumni Information Card (found on page 9) and return it to the ISUE Office of Alumni Affairs.

1971

RICHARD MAYNE received an American Institute of Banking certificate on May 15, 1975. Richard is employed at Farmers Bank of Rockport, Indiana.

C. DENNIS WEGNER graduated from law school in January 1974 and was admitted to the Bar in May 1974. He is now in private practice at 2930 East 10th Street, Indianapolis, Indiana.

1972

TOM E. FIELDS is in the family practice residency program at St. Mary's Hospital. He is in the only program south of Indianapolis.

ROGER W. HANSEN, of Moore Business Forms, Inc., received a trip to Florida to attend the company's Annual Achievement Club convention for out-

standing sales performance in 1974.

MICHAEL E. PETTY was named public relations director of the United Way of Southwestern Indiana, Inc. last spring.

1973

ROBERT CHARLES ALSTADT was married to the former Miss Karen M. Garvey. Robert and Karen will reside at 1292 Western Hills Avenue.

STEVEN K. ELLIOTT, a Life Science major, is in his 4th year of Medical school at St. Mary's Hospital. He will complete medical school in December of 1975.

MELODY LEWIS, a Mt. Vernon, Indiana elementary Art teacher, was chosen as general chairman of the 1975 Children's Art Fair last spring.

DANIEL W. RANGER was recently promoted to Assistant Cashier with The Arizona Bank.

SISTER ROSE MARY REXING, O.S.B., took final vows as a Benedictine nun. She is working on her Master's degree at Notre Dame University.

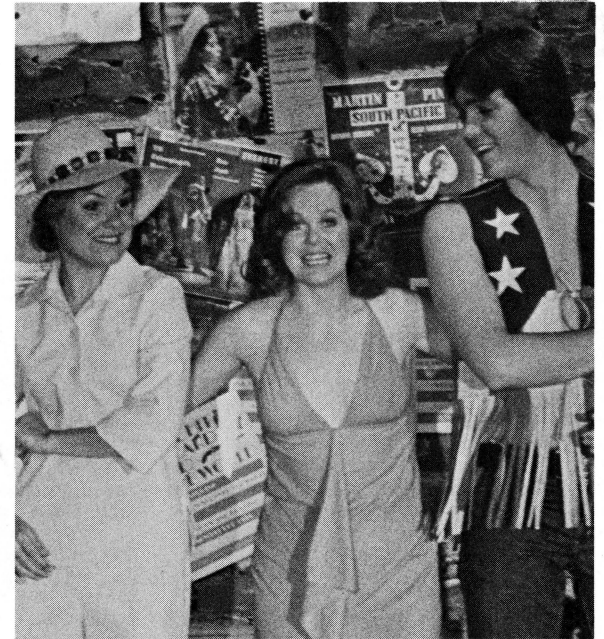
JULIANA ELLEN TOPPER became the bride of Michael Wayne McFall. The couple will reside in Evansville.

LARRY C. WILDT, a graduate in Management of Des Moines, Iowa, has been promoted to Personnel Supervisor, A MF Lawn and Garden Division. Larry was previously with Potter and Brumfield, Princeton, Indiana.

BONNIE S. ZINT became the bride of Roger D. Ambrose on July 11, 1975 in Nativity Catholic Church.

1974

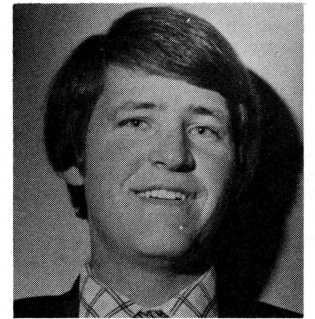
CHARLES A. BECK is entering law school at Indiana University this fall.



Lillian Giello, center, played the lead in Evansville Civic Theater's summer production, "Applause." The play ran an additional week due to response to tickets.

JANE ELDRIDGE, a Sociology major, has accepted a position as Human Rights Coordinator for the city of Henderson, Kentucky.

THELMA R. GABLE was married on June 7, 1975 to Gregory Maxwell, a graduate student in Nuclear Engineering. Thelma and Greg will live in West Lafayette, Indiana.



DAVID GRAY will be attending law school at Indiana University in Fall, 1975.

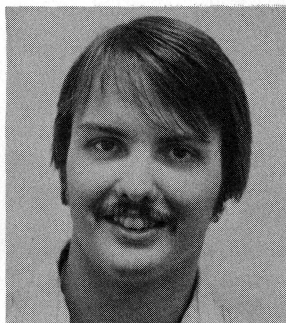
DAVID C. HERRENBRUCK was appointed Supervisor of Accounting at Medco Incorporated. There are twenty-four persons in his new department.

JOSEPH CLARK KENDALL has accepted a position with DHEW in Chicago, Illinois. His position is Social Insurance Representative.

BEAU MEYER is a dental assisting graduate working for Dr. Richard Seib, a children's dentist.

DARYLE WAYNE MOTTLEY was married to the former Miss Beth Ann Becker on May 17, 1975. He is a member of the faculty of the Lindbergh High School in St. Louis, Missouri.

DAVID G. RICHARDS has accepted a position with the Social Security Administration as a Benefit Authorizer.



GARY A. RUSSELL was married to the former Miss Barbara Wiseman. Gary is an accountant with Gaither, Horton and Koewler. Mr. and Mrs. Russell reside in Evansville.

DAVID F. WILLIAMSON is a teacher at South Montgomery School Corporation in Crawfordsville, Indiana.

1975

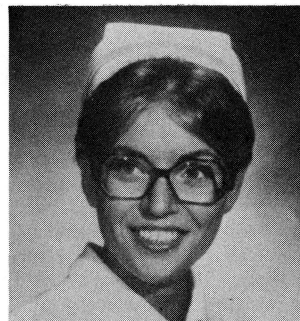
STEPHEN O. DELANCY has taken a position with General Adjustment Bureau as an insurance adjustor. Steve is living in DeSoto, Illinois.

LILLIAN GIELLO, an English major, recently starred in the Evansville Civic Theatre presentation "Applause", and received rave reviews. She will teach in Petersburg, Indiana this fall.

KEITH THOMAS HENDERSHOT and Brenda Kaye Caton were married July 19, 1975. Brenda is working on her Master's degree at ISU-Terre Haute. Keith is employed at Cork n' Cleaver.

JOE JAQUEMAI has won a \$10,000 scholarship from the Rotary Foundation of Rotary International. He will study for one year in India at Madurai University.

CATHY NIEDERHAUS, a dental hygiene graduate, has accepted a position with Dr. Hammelman in Poseyville, Indiana.



ROBERT CRAIG SCHEAFNOCKER was married to the former Miss Peggy Suzanne Wulff. Mr. and Mrs. Scheafnocker will reside in Fort Lauderdale, Florida.

RANDAL R. WAHL has accepted a position as Inventory Management specialist with Naval Avionics Facility in Indianapolis, Indiana.

Alumni Information Card

Please complete the Alumni Information Card with updated material and send to Director, Alumni Affairs, ISUE.

NAME _____

ADDRESS _____

CITY _____ State _____ Zip _____

Present position (list title and date you started this position):

Recent personal information (Include marriage, births, awards received, business promotions, and other pertinent personal information.)

Year graduated and major field of study.

Alumni Additions



The Office of Alumni Affairs is happy to announce births in this column, **ALUMNI ADDITIONS**. To keep us informed of your new baby, write to the Office of Alumni Affairs, or complete the Alumni Information Card found on page 9.

PHILIP BENDER '75 and **MARY BENDER '74**, a daughter Jennifer Frances, born June 5, 1975.

STEPHEN DELANCY '75 and Cynthia, a son Stephen Bruce, born February 2, 1975.

CARL DIEDRICH '71 and Carol, a son Curt Warren, born June 13, 1975.

CHARLES FARMER '74 and Carolyn, a daughter Chotsoni Takiyah, born March 8, 1975.

ROBERT GLINES '74 and Judy, a son Robert Andrew, born April 8, 1975.

CHARLES HALTERMAN '74 and Janet, a son Charles Howard, born May 7, 1975.

JOSEPH HIGGINS '75 and Debra, a son Chad Ryan, born June 30, 1975.

MICHAEL HOLMES '73 and **BARBARA HOLMES '74**, a son Aaron Michael, born July 3, 1975.

GARY KEMPER '73 and Mary Ann, a son Mark Andrew, born July 6, 1975.

SANDRA RIVERS '73 and husband Thomas, a daughter Amy Sarah, born July 8, 1975.

1975.

PEGGY ROEDEL '71 and husband Alton, a son Christopher Ray, born May 21, 1975.

JOSEPH SCHNAPF '73 and Constance, a daughter Holly Louise, born April 28, 1975.

1975

EARL STIFF '74 and Georgia, a daughter Tracey Dawn, born March 10, 1975

ROBERT WATERS '71 and Karen, a son Brian Robert, born April 3, 1975.

KENDRICK YATES '71 and Barbara, a daughter Margaret Anne, born May 10, 1975.

From the
PRESIDENTS' DESK

With a new year starting, the Alumni Association is looking forward to the most active year yet. With the help of many dedicated active members, all scheduled functions and activities will be carried out.

Among some new activities scheduled are: special meeting to revise the constitution, formation of an Indianapolis Alumni Club; open the way for mail-in votes for officers; special mailings for active members only; and most important, the fifth year reunion.

Frank McDonald and Robert Roeder, both of Indianapolis, have become the first out-of-town members to be appointed to the Executive Council. Hopefully this will help make the Association aware of the needs and expectations of members that have moved from our area, as well as acquaint others with ISUE.

With the help and cooperation of all concerned, we hope to make this the biggest and best year yet.

Sincerely,

Dennis Orsburn

OCTOBER 12 — CAMPUS OPEN HOUSE

Indiana State University Evansville is planning a campus open house on Sunday, October 12 from 1:00 p.m. to 5:00 p.m. Parents of ISUE students will have the opportunity to see the classrooms and modern laboratory equipment as well as meet faculty and other students.

The University Center "Sunday Buffet" will be open at 11:00 a.m. A full line of good food attractively served will be offered in the Sunday Buffet.

The newest campus building, The Technology Center, will be open for tours. With vibrant fall colors in the wooded area around the campus, visitors will see Southern Indiana in its best color.

INSTITUTE BEGINS THIRD YEAR

by Judy Hummel, Co-Director

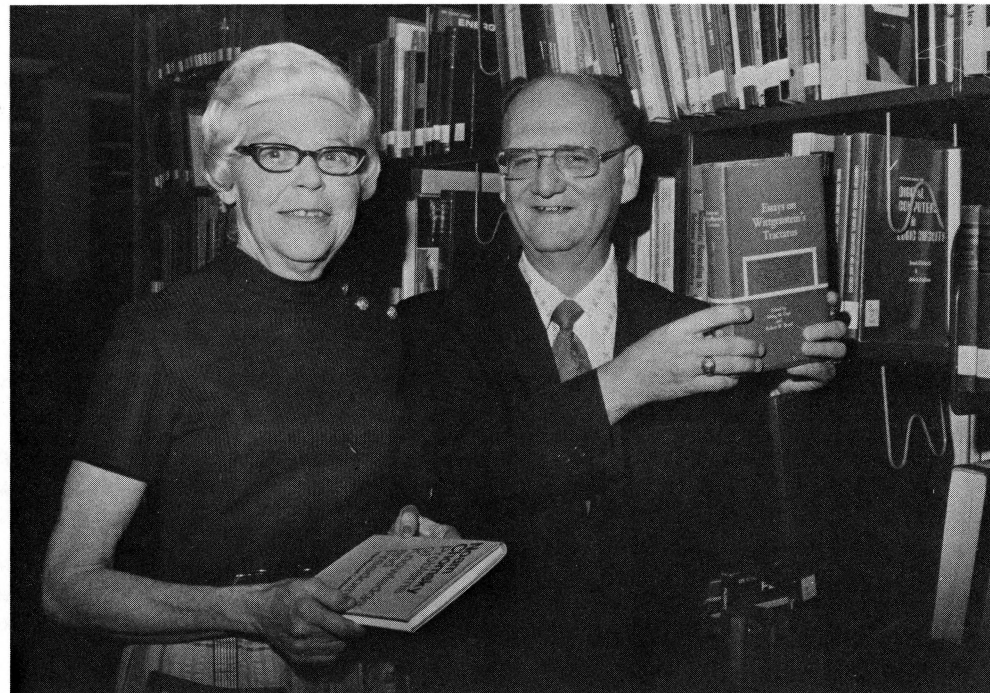
The Human Relations Institute of Indiana State University Evansville was created in 1973 by a Title IV grant under provision of the 1964 Civil Rights Act. Funded initially to serve only the Evansville-Vanderburgh School Corporation, the Institute has steadily enlarged its program and scope of services. The Human Relations Institute now provides service to the Evansville, East Chicago, Gary and Hammond School Corporations.

The activities and work scope of the 1975-76 Human Relations Institute provide participating school corporations with teachers trained in curriculum, methods, human relations, and conflict resolution. Each school city will have its own highly trained facilitator team, as well as a trained team within each high school feeder district and an experienced staff member to serve their evolving needs. The total number of educators participating directly in the Institute is 115.

The facilitators, one representing each of the high school feeder districts, have been trained in leadership skills, group dynamics, problem solving, value strategies, and consensus seeking during a two-week workshop (July 7 - July 18, 1975). Following the two-week workshop, the four-week Summer Institute commenced (July 21, 1975) at two sites, Evansville and Gary. During this period, facilitators met with their feeder teams to determine needs, develop strategies, and begin implementation for the academic school year.

Major emphasis have been placed in three areas: racism, sexism, and bilingual programs, with regard to text book analysis, curriculum revision, workshop implementation (building-level), and on-going human relations projects. To meet these identified needs, the Institute will receive funds of \$215,904.00 during the 1975-76 fiscal year.

Throughout the three-year tenure of the Institute, research has indicated that most communities, including the schools which are an integral part of the entire community, are not prepared to deal with the area of human relations as it refers to desegregation. Too often, school personnel have associated low socio-economic and minority students with "slow learners," and this stereotyping often prevents equal educational opportunity from being available to students that may be classified into one or both of these groups. Therefore, a major test confronting the educator is to demonstrate and promote a positive human relations attitude. In order for the desegregation



Mrs. Elmo Holder helps Charles Lonnberg, Director of ISUE Library, shelve some of her philosophy collection, a recent gift to the ISUE Library. The collection includes over 1000 philosophy and literature books.

plan, voluntary or involuntary, to be successful, the human relations program must then permeate the total school program.

Admittedly, there is strong evidence of institutional racism throughout many school systems. Such a condition mitigates student retention and success. However, in spite of such racism, when properly trained, teachers can have a positive effect on student attitude toward the total school experience.

Research by this Institute has indicated that minority isolation and feelings of negative self-concept can be reduced dramatically when teachers are properly trained.

It is contended that teacher retraining have a positive effect on alleviating racial tensions, poor student self-concept, and isolation. It is further contended that these factors are primary causes of student frustrations and failure.

Oftentimes, it is these feelings of frustration and failure which cause students to rebel against the school organization, and may result in their eventual withdrawal or expulsion.

Teachers must be able to diagnose and structure classroom activities to meet the needs of every child regardless of race and sex. To meet these

needs, Institute staff have devised a series of on-going projects, i.e. sociometric studies, and interaction analysis awareness experiences. The objective of such projects is to provide participating teachers with data and appropriate activities, so as to achieve an accepting environment where each student can grow intellectually, socially, and emotionally.

Therefore, Institute services are on-going throughout the entire academic year. Institute staff meet with participants on a regular basis to discuss and explore problems and projects/activities. Participants also attend ten (10) academic year workshops, wherein new ideas are presented and further reinforcement is given to insure that Institute objectives are met.

SPORTS NOTES

ISUE's baseball program has a new coach. He is former professional player, Larry Shown. Coach Shown replaces Jim Brown who is remaining at ISUE to teach full time in the Education Department.

Coach Shown is a former pitcher-outfielder who graduated from Owensboro, Kentucky Senior High School. He was drafted by the New York Yankees in the first major league draft in 1965. Larry spent a total of six years in professional baseball playing in the instructional league, the Carolina League and the Florida State League. His final year was at Ft. Lauderdale, spent as a player-coach for the Yankee Farm Club.

The Eagles new coach is married, and he and his wife, Charlotte have two children, Lisa (7) and Lori (3).

The 1975-76 Basketball Eagles will face a stiff test in their 26 scheduled games next season. It is the most attractive and strongest schedule ever to challenge the Eagles.

Nationally known Southeastern Conference opponent, University of Mississippi, Ohio Valley Conference opponent, Austin Peay, along with Kentucky Wesleyan, Tennessee State and Mercer University headline the teams on this year's schedule.

The schedule includes 11 home dates and 15 road games. The home dates will be played at ISUE Central Arena. The Eagles will play a December 20 game against Marion College at 1:30 in the afternoon as an experiment to see how the fans respond to an afternoon contest.

Coach Boultinghouse had an excellent basketball recruiting year. The basketball picture will surely brighten with the addition of 6'7½" Joe Simms of Olney Central College, 6'6" Gary Burdshall of Cumberland Junior College, 6'6" Cortez Collins from St. Louis, Missouri, 6' Paul Werner of Panola Junior College, and 6'7" Lawrence Knight, an All-State performer from Detroit. All the recruits have excellent credentials and should assure the basketball program it's first winning season.

While plenty of attention is being given the prize recruits, the Eagles retained some outstanding performers. Last season leading scorer, Ernie Brothers, (18.3) and second leading scorer and leading rebounder, "Spider" Rowser, return to head the Eagles for another season. Lettermen Mark Osterman, Mike Torain, Tony Williams and Terry Kirchoff will further strengthen the team. The Eagles also gain the services of guard, Lenny Baccus, and forward, Emanuel Rowser.

The ISUE Varsity Club elected their new directors during their annual May meeting. Elected at the meeting were: "Lefty" Alstadt, Roland Eckels, Jim Helfrich, Barney Hubbard, Chairman, Ed Johnson, Bill Leedy, Bill Moutoux, Bob Ossenberg, Bernie Powers, Treasurer, Joe Stewart, Charlie Weaver, and Jim Will, Secretary.

Family Educational Rights and Privacy Act of 1974

YOUR RIGHTS AS A FORMER STUDENT

Public Law 93-380

The Family Educational Rights and Privacy Act of 1974, as amended, requires that you be advised of your rights concerning your education records and of certain categories of public information which the University has designated "directory information". This article, in question and answer format, was compiled by the ISUE committee on access to student records chaired by John Deem, Registrar.

YOUR RIGHTS:

1. As a former student on the Indiana State University Evansville campus, what rights do I have regarding my University records?

You have the right to inspect and review all your records which meet the Act's definition of "education records."

2. What is the definition of "education records?"

Education records are all the records maintained by the University about you. There are six exceptions:

- personal notes of Indiana State University Evansville staff and faculty.
- employment records
- medical and counseling records used solely for treatment
- financial records of your parents
- confidential letters and statements of recommendation placed in your records prior to January 1, 1975.
- confidential letters and statements of recommendation for admission, employment or honorary recognition placed in your records after January 1, 1975, for which you have waived the right to inspect and review.

3. Is there any situation in which the University may insist that I waive my rights? Under no condition may you be required to waive your rights under this Act before receiving University services or benefits.

4. Where are my records kept?

Records are not maintained in a central location on the campus. Requests to review your records must be made to each office which maintains your records. Your request must be made in writing and presented to the appropriate office. That office will have up to 45 days to honor your request. For most students, these offices will include the Registrar, placement office, alumni affairs, and any other campus offices with which you have been in contact.

5. What if I do not agree with what is in my records?

You may challenge any information contained in your "education records" which

you believe to be inaccurate, misleading, or inappropriate. You may insert a statement in your record to explain any such material from your point of view. If you wish to challenge information in your file, you must make a written request for a hearing to the director of the appropriate office. In most cases, the decision of the director will be final. However, you may elect to file an appeal in writing to the President who will review the decision only if a significant question to policy or compliance with the law appears to be raised by the case. If necessary, the President may appoint a hearing panel to review a challenge of the records.

6. May I determine which third parties can view my education records? Under the Act, your prior written consent must be obtained before information may be disclosed to third parties unless they are exempted from this provision. These exemptions include:

- requests from Indiana State University Evansville faculty and staff with a legitimate educational "need to know"
- requests in accordance with a lawful subpoena or court order
- requests from representatives of agencies or organizations from which you have received financial aid
- requests from officials of the educational institutions in which you intend to enroll
- requests from other persons specifically exempted from the prior consent requirement by the Act (certain federal and state officials, organizations conducting studies on behalf of the University, accrediting organizations)
- parents of a dependent student as defined by the Internal Revenue Code
- request for directory information (please refer to the next question for an explanation)

7. What is meant by the term "directory information"?

The University, in accordance with the Act, has designated the following categories of information about you as public unless you choose to exercise your right to have this information withheld. This information will be routinely released to any inquirer unless you request that the items be withheld. These categories are:

- name
- home address
- telephone listing
- date and place of birth
- major field of study - includes teacher certification majors and minors
- participation in officially recognized

activities and sports

- weight and height of members of athletic teams
- dates of attendance (including current classification and year, matriculation and withdrawal dates)
- degrees and awards received (type of degree and date granted) including honor roll designation
- the most recent previous educational institution attended
- enrollment status

8. What kinds of inquiries does the University receive for "directory information"?

The University receives many inquiries for "directory information" from a variety of sources including friends, parents, relatives, prospective employers, graduate school, honor societies, licensing agencies, and news media. Please consider very carefully the consequences of any decision by you to remove these items from the list of "directory information". Should you decide to inform the University not to release this "directory information", any future requests for such information from non-University persons or organizations will be refused. For example, a prospective employer requesting confirmation of your major field of study, address or date of birth would also be denied access to such items should you withdraw them from the list of "directory information". The University will honor your request to withhold the items listed above but cannot assume responsibility to release them. Regardless of the effect upon you, the University assumes no liability for honoring your instructions that such information be withheld.

If you wish to file a form withdrawing information in the "directory" classification, you should complete the form developed for this purpose which is available for your use in the Registrar's Office. After you have filed this form, the Registrar will notify the appropriate University offices and begin to comply with your wishes as soon as possible.

9. Where can I find out more information about the provisions of the Act?

If you have questions regarding the provisions of the Act, you may contact the Registrar, 118 Administration Building, Extension 261.

10. Whom should I contact if I wish to make a complaint?

If you believe that the University is not complying with the Act, please direct your comments to the Committee on Access to Student Records, Room 118, Administration Building.

News Around Campus

INTRAMURALS INCREASED

This year's intramural program at Indiana State University Evansville will include additional sports. A bowling league, a golf tournament, and a decathlon event will be added to the present lineup of men's activities. The women's program will also be expanded to include six team sports and five special events.

Intramural sports provides quality recreation and competition to ISUE students, faculty and staff members. People desiring to exercise their seldom used muscles have the opportunity to participate in the ISUE intramural program and experience the excitement of team spirit and competition.

According to Don Ramsden, Director of Intramurals, "The main goal of intramural sports is to satisfy the ISUE community's need for physical exercise and competition. By providing a challenging array of sporting events, this goal will be easily reached."

NEW BACCALAUREATE DEGREE OFFERED

Persons who have completed a certification or training program in a health care field, and would like to complete a four year degree program, can do so at Indiana State University Evansville. The Allied Health Sciences area is offering a new baccalaureate degree program, Bachelor of Science in Health Services. The principle aim of the degree program is to allow the student to develop competencies required for advancement in a chosen health occupation. Students will select courses from a variety of minors to supplement basic health training. They will be allowed to concentrate in such areas as education, biology, management or any field available at ISUE.

Up to thirty semester hours of credit may be granted to a student who has developed technical competency and has been certified or licensed in one of the health care occupations through completion of an accredited or recognized program of training. Ten additional semester hours may be granted for completion of a minimum of three years validated occupational experience in a health occupational specialty.

"In addition to the basic health care training and University general education requirements, plus the minor area requirements, the student of health services will take 15 hours of core courses in Allied Health Sciences," explained Dr. Gordon Kelley, Director of Allied Health Sciences. "Courses will be offered in the evening, allowing the working student to take advantage of this degree program."

"This is the first four year degree program of its kind in Indiana," according to Dr. Kelley.

ISUE GARDENS



On available University land, the Physical Plant plowed fifty 25' x 40' garden plots for use by ISUE faculty, staff and students. Twenty-four energetic persons planted gardens and many realized fine vegetables. Crops harvested include cucumbers, zucchini, beans, tomatoes, corn, egg plant, potatoes, broccoli, peanuts, vegetable spaghetti squash, watermelons and cantelopes.

Charles Petranek (pictured at left) Assistant Professor of Sociology and Community Garden Plots Coordinator expects to see the project again next year. "Many people who bought plots didn't realize the amount of work necessary to have a successful garden; at least 2-3 hours a week are necessary for good gardens."

RECREATION ROOM OPEN

The Recreation Room in the ISUE University Center is open seven days a week. Hours are 9:00 a.m. to 10:00 p.m. Monday through Thursday, 9:00 a.m. to 11:00 p.m. Friday, and 1:00 p.m. to 11:00 p.m. Saturday and Sunday.

The facility is open to the public. The recreation room equipment includes pool, ping pong, pinball machines, air hockey, foosball, chess and card games. The Recreation Room is located in the lower level of the University Center.



8600 University Boulevard

ISUE Magazine

8600 University Boulevard

Evansville, Indiana 47712

FALL FILM SERIES

Fifteen movies will be featured in the 1975 Fall Film Series to be shown at ISUE. The films are

Sept. 9 – MAGNIFICENT AMBERSONS

Sept. 16 – BIRTH OF A NATION

Sept. 23 – MR. SMITH GOES TO WASHINGTON

Sept. 30 – MR. DEEDS GOES TO TOWN

Oct. 7 – IT HAPPENED ONE NIGHT

Oct. 14 – 8 1/2

Oct. 21 – LA STRADA

Oct. 28 – I VITELLONI

Nov. 4 – FELLINI: A DIRECTOR'S NOTEBOOK

Nov. 11 – THE 400 BLOWS

Nov. 18 – SHOOT THE PIANO PLAYER

Nov. 25 – DAY FOR NIGHT

Dec. 2 – MEAN STREETS

Dec. 9 – DELIVERANCE

Dec. 16 – WHO'S AFRAID OF VIRGINIA WOOLF

General admission is \$1.00 per show payable at the door. The movie of the week is shown two times, at 2:00 p.m. and 8:00 p.m. in Room 126. The films are open to the public.

Non-Profit Org.

U. S. POSTAGE

PAID

EVANSVILLE, IND

PERMIT NO. 1675

Address Correction
Requested