

8600

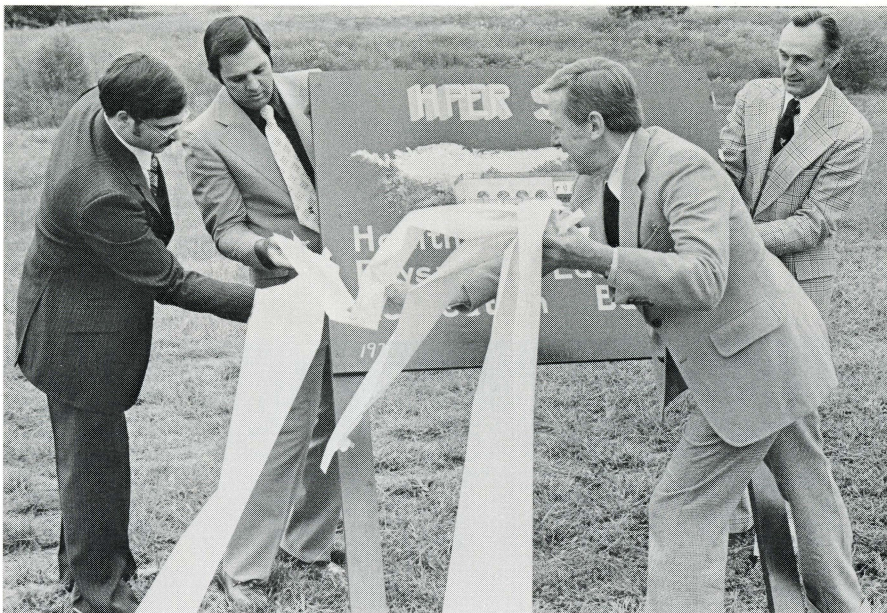
UNIVERSITY BOULEVARD

Volume 6, No. 1

Fall 1977

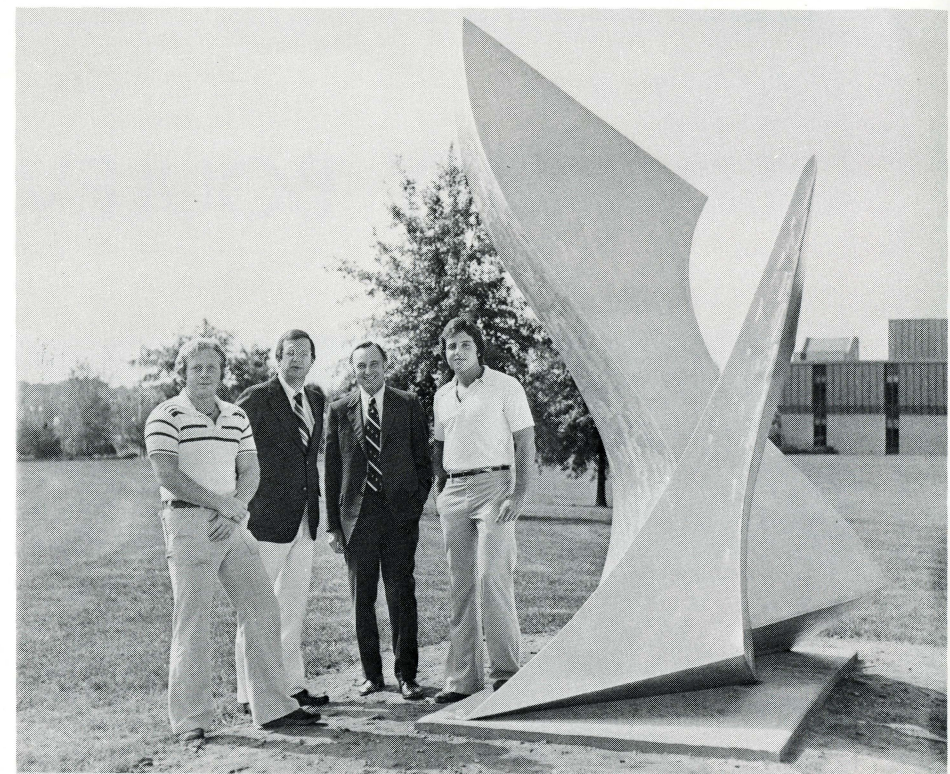






When the Board of Trustees of Indiana State University met on the Evansville campus October 7, it was the perfect opportunity to unveil the sign on the site of the Health, Physical Education and Recreation Building. Groundbreaking for the building is expected to take place during the spring of 1978. Pictured above are (left to right) Harold Beumel, President of the ISUE Student Government; Wayne Boultinghouse, ISUE Athletic Director and Basketball Coach; Charles Ainlay (Goshen), President of the ISU Board of Trustees, and David Rice, President of the Evansville campus.

Pictured below are the members of the Board of Trustees (left to right) George G. Johnson (Anderson); Paul Siebenmorgen, Secretary (Terre Haute); Albert A. Woll, Assistant Secretary (Evansville); Alfred F. Brames (Indianapolis); Charles W. Ainlay, President (Goshen); Rex E. Breeden, Vice President (Columbus); David Rice, President of Evansville campus, Nancye T. Mitchell (Gary); Richard G. Landini, President of Indiana State University; and Steven C. Runyon (Terre Haute). Absent when the photo was taken was James T. Morris (Indianapolis).



*Sunbird*, one of the sculptures shown on our cover, provides a good setting for a congratulatory exchange between (left to right) John McNaughton, Associate Professor of Art; Dr. Richard Landini, President of Indiana State University; Dr. David Rice, president of Indiana State University Evansville; and Greg Folz, ISUE student who worked with McNaughton on the Alcoa Sculpture project.

## 8600 UNIVERSITY BOULEVARD

8600 University Boulevard is published Winter, Spring, Summer, and Fall by the Office of the President, Indiana State University Evansville, Evansville Indiana 47712. Second class postage paid at Evansville, Indiana. Please send form 3579 to the Office of the President, ISUE, 8600 University Boulevard, Evansville, Indiana.

Volume 6, No. 1  
Fall 1977

Readers are invited to respond to content in the form of letters signed and addressed to the editor.

### EDITOR

*Sherianne Standley*

### CONTRIBUTING EDITORS

*Ralph Kent  
Ann Humphrey  
Mary Lue Russler*

### ARTICLES

*Tim Will  
Tim Ethridge  
Peggy Newton*

### PHOTOGRAPHY

*Debbie Lottes  
Tim McCracken  
Brad Whipple*



# Community Benefits From Professor's Efforts

Because John McNaughton takes seriously Indiana State University Evansville's encouragement to extend his professional competencies to community efforts, the people of Evansville have been enriched culturally.

McNaughton, an associate professor of art at ISUE since 1970, has located four separate grants from industry and state organizations to facilitate the development and construction of five large outdoor sculptures for the Evansville community.

His latest contribution was funded by a national grant from the Alcoa Foundation for \$5000. The grant, made possible by McNaughton's creativity and the doggedness of Alcoa's Warrick Operation Public Relations Manager Don Paro, stipulated that two large Alcoa Aluminum sculptures would be developed for Evansville.

One sculpture, erected at the entrance to the ISUE campus, was constructed by an ISUE student and the other, placed on the lawn of the Vanderburgh Auditorium, was developed by McNaughton. The sculptures were officially presented to the community in August.

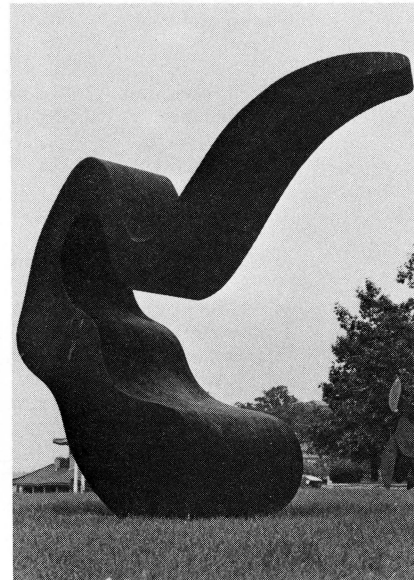
The idea for these two sculptures began when Paro invited representatives from Alcoa central headquarters to Evansville to view the campus and the programs Alcoa was sponsoring. During the brief visit, art laboratories were visited and the Alcoa officials were impressed with student and faculty art work. Subsequent conversations produced interest on the part of Alcoa to have sculptures fabricated from aluminum for display in the Evansville area. The idea came to McNaughton to combine Alcoa's interest with his interest in metal sculpture for the cultural enrichment of the community.

Through Paro's coordination and hard work, the grant was funded and the project was underway.



*"Untitled"*

*"Flowing River"*



Greg Folz, an ISUE junior and the son of Mr. and Mrs. C. A. Folz of 3600 Keck Avenue, Evansville, was chosen as the outstanding student for the project and was awarded a \$460 scholarship. Professor and student worked together from May to August, putting in an estimated 300 hours each. Folz's sculpture, titled "Sunbird" stands 12 feet tall, weighs approximately 800 pounds and has its entire surface polished to achieve a startling effect in sunlight.

McNaughton's sculpture, titled "The World's Largest," measures 12 feet by 10 feet and weighs 800 pounds. According to the sculptor, it is designed to poke fun at society's preoccupation for the largest of everything. "I'm trying to give Evansville, in a fun way, the largest . . . but I'm not saying what," McNaughton confessed with a grin.

*"Tequila Sunrise"*



McNaughton's efforts to obtain sculpture for the community began in the summer of 1974 when the construction firm of Holtzman and Silverman made possible a \$4000 grant to be used by McNaughton. The firm stipulated that the ISUE professor would coordinate several students in the project. The sculpture was installed in September 1974 at the Parkside Terrace Development. It is 15 feet tall and constructed of Alcoa Aluminum.

During the winter of 1975, Globe Industrial Contractors of Henderson, Kentucky, contacted McNaughton and offered to work with the University in developing a large welded steel sculpture for the campus. McNaughton again picked a talented student named Jim Greer and together they developed a small model of the future sculpture. This model and blue prints were turned over to Globe Industrial Contractors and then fabricated in Henderson under the direction of Greer. This sculpture, fabricated from steel and painted, is entitled "Tequila Sunrise," stands 17½ feet tall and weighs two tons. It is located on the ISUE campus near the Technology Center.

In July, 1976, McNaughton won an \$8000 award for the construction of a sculpture which will rest permanently on the lawn of the Evansville Museum. His winning entry was titled "Flowing River" and was constructed on Cor-ten steel. This sculpture stands 11½ feet tall. Its profile depicts the meandering of the Ohio River as it curves around Evansville.

The prolific sculptor is spending this academic year as visiting professor of art at the School of Architecture of Ball State University. He will return to ISUE in the fall of 1978.

*"The World's Largest" and "Sunbird" are featured on the cover.*



# EAGLES EXPECTED TO BE FAST, EXCITING, WINNING TEAM

by  
Tim Ethridge

"I'm generally pleased with the way the team has performed thus far, though I'd like to see more defensive intensity," said ISUE head basketball coach Wayne Boultinghouse following the Eagles pre-season scrimmage Nov. 10 at ISUE Arena. "You can see that we're not a big team, but we are going to be a fast, exciting winning basketball squad."

The reasons for Boultinghouse's pre-season confidence are many, not the least of which is the return of lettermen Randy Curl, Dan Labhart, Emanuel Rowser and Cortez Collins. "Our lettermen should provide the team leadership," Boultinghouse commented. "Dan Labhart is a tremendous floor general, and Randy Curl may be our first All-American candidate playing at a forward position."

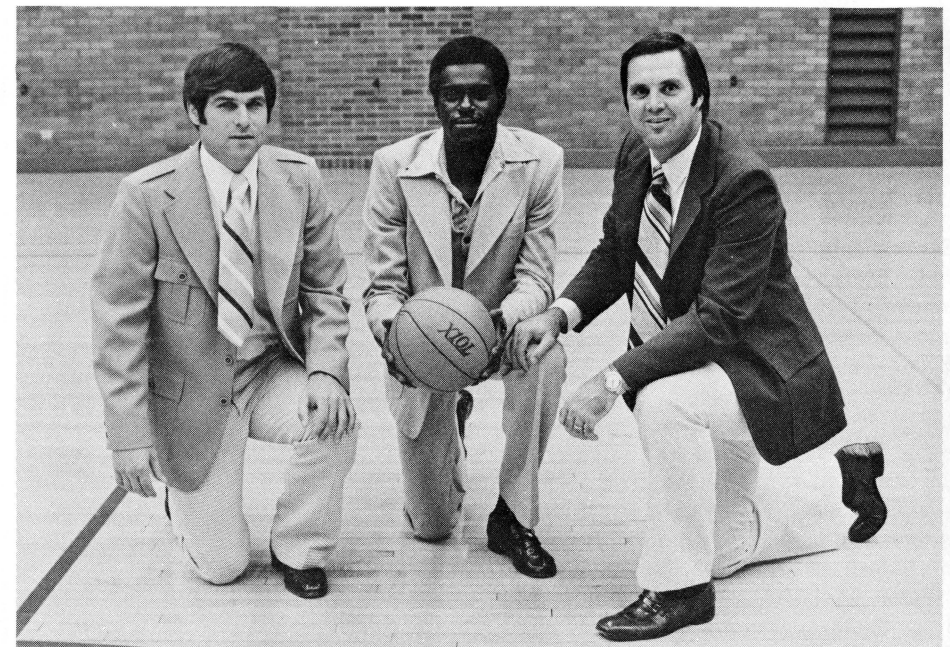
Also on the scene for the Eagles this year will be Joe Simms, 6'7" senior from Tell City who was red-shirted last season; Jim Schmidt, an all-around athlete from Evansville North who transferred to ISUE from Morehead State University; and Brad Bolling, former Southridge ball-handler who is attending ISUE on a golf scholarship

after spending two years at Olney (Ill.) Central College.

"If Joe Simms can improve defensively, he may just be the first 'true' center we've ever had," Boultinghouse said. "I've also been impressed with Jim Schmidt, who I've always considered a great athlete."

Boultinghouse also conducted a successful recruiting year, picking up six freshmen athletes from around the Midwest. They are George Macon, 6'4" guard-forward from Cincinnati, Ohio; Barry Collins, 6'1" guard who starred at Castle High School last year; Ken Mask, 6'4" guard-forward from Martinsville who passed up a football scholarship from the University of Mississippi to attend ISUE; Larry Simmons, a pure shooting guard from Linton, Indiana; Rick Kissel 6'6" forward from Ramsey, Indiana; and Tim Townsend, an imposing 6'6" 230 pound forward from Cincinnati, Ohio.

Tickets for ISUE home games are \$2 for general admission or \$2.50 for chair-back, with season tickets going for \$20 and \$25.



**EAGLES COACHING STAFF:** (left to right) Assistant Coach Don Ramsden, Student Assistant Coach DeJuan "Spider" Rowser, and Athletic Director and Basketball Coach Wayne Boultinghouse.

Sat. Nov. 26	OAKLAND CITY	8:00 p.m.	Sat., Jan. 21	at Tennessee State	8:00 p.m.
Mon. Nov. 28	TRANSYLVANIA	8:00 p.m.	Wed., Jan. 25	at IU—Southeast	8:00 p.m.
Fri. Dec. 2	RIVER CITY TIP-OFF CLASSIC	6:30 p.m.	Sat., Jan. 28	I.U.P.U.—INDIANAPOLIS	8:00 p.m.
Saturday, Dec. 3	ISUE, Union, Marian, Oakland City	8:30 p.m.	Wed., Feb. 1	at Kentucky Wesleyan	8:00 p.m.
Fri. Dec. 9	at Rensselaer, Ind.	7:00 p.m.	Sat., Feb. 4	S.I.U.—EDWARDSVILLE (Homecoming)	8:00 p.m.
Saturday, Dec. 10	Pre-Christmas Tourney. ISUE St. Joseph, SIU—Edwardsville, Wisconsin-Milwaukee	9:00 p.m.	Thurs., Feb. 9	CAMPBELLSVILLE	8:00 p.m.
Sat. Dec. 17	at Wake Forest	8:00 p.m.	Sat., Feb. 11	at Oakland City	2:30 p.m.
Tue., Dec. 20	at Roanoke	8:00 p.m.	Mon., Feb. 13	NORTHERN KY.	8:00 p.m.
Thurs., Dec. 29	at Franklin Holiday Tourney	7:00 p.m.	Thurs., Feb. 16	ST. FRANCIS	8:00 p.m.
Fri., Dec. 30	ISUE, Franklin, Manchester, Wisconsin-Whitewater	9:00 p.m.	Sat., Feb. 18	at Transylvania	7:30 p.m.
Saturday, Jan. 7	MISSOURI BAPT.	8:00 p.m.	Monday, Feb. 20	IU—SOUTHEAST	8:00 p.m.
Tue., Jan. 10	At Bellarmine	8:00 p.m.	Wed., Feb. 22	KENTUCKY WESLEYAN	8:00 p.m.
Sat., Jan. 14	at S.I.U.—Edwardsville	8:00 p.m.	Tue., Feb. 28	at I.U.P.U.—Indianapolis	8:00 p.m.



# Elizabethan Dinners Receive National Attention

by Peggy Newton

The Mid-America Singers have learned sacrificing part of their Christmas vacation has its benefits.

Last winter, while most of the students at ISUE recovered from final exams, the Mid-America Singers were busy preparing a program called "An Elizabethan Christmas Celebration," which was seen locally on Channel 9. The program featured the Madrigal Dinner, which is given annually at ISUE.

The half-hour program, presented on WNIN's Collage series, received "very favorable" response, according to Dr. Jon Carlson, musical director of the Mid-America Singers, and Vincent F. Saele, President and General Manager of WNIN.

The Public Broadcasting Service was also impressed. On December 18, PBS will feed the program to 278 public stations nationwide.

The broadcasting of "An Elizabethan Christmas Celebration" will mean national exposure for the Mid-America Singers, ISUE, and WNIN.

The Madrigal Dinner, as depicted in the program and in its annual recreation by the Mid-America Singers, is an authentic reproduction of the madrigals of Elizabethan England.

"We drink 'wassail,'" says Dr. Carlson. A wassail is hot ale with roasted apples.

"There's a procession," Dr. Carlson continues, "in which the singers carry holly which is hung around the hall while we sing "Deck the Halls with Boughs of Holly." We bring in the Boar's Head—after which the main course is served and followed by entertainment.

"In Elizabethan England, following the main course, the lords and ladies would have gathered around the table and sung madrigals for their own enjoyment. We

have an audience, of course."

The Mid-America Singers discovered that performing on tape differed from performing live.

"The students had to adjust to wearing costumes for long periods of time, under very, very hot lights," explains Dr. Carlson.

"And we had technical problems. We

had candles lit on the set. We would tape different segments at different times, and the candles kept burning down."

"It's like making a movie. A camera would foul up or a cameraman would make a mistake, or somebody would mouth the wrong words at the wrong time. It was very, very hard work."



However, Dr. Carlson adds, "(Producer-director) Dave Wilson and the Channel 9 staff were very easy to work with. It was a great experience."

According to Vincent Saele, the idea of taping the Madrigal Dinner began over a year ago, when Saele, Dr. Carlson, and David Wilson saw the need to broadcast "a Christmas event here in the Evansville area that was somewhat significant and unusual."

A cassette of the program was sent to PBS in the spring of 1977. In October, WNIN was notified, says Saele, "that the show was acceptable technically and in terms of content."

"This is the first program that we have submitted to them for consideration," says Saele.

The program will be seen on most of the public TV stations across the country, "including Alaska, Hawaii, Puerto Rico, the Virgin Islands, and even Pogo-Pogo on American Samoa."

What does the nationwide broadcast mean to the Mid-America Singers, ISUE, and WNIN?

"I think it means exposure for the school," says Dr. Carlson. "It's a credit to the work that we've done, to the university for supporting the group, and to the students who took part of their Christmas vacation to work on it."

Vincent Saele says, "It pleases us to have the recognition of PBS."

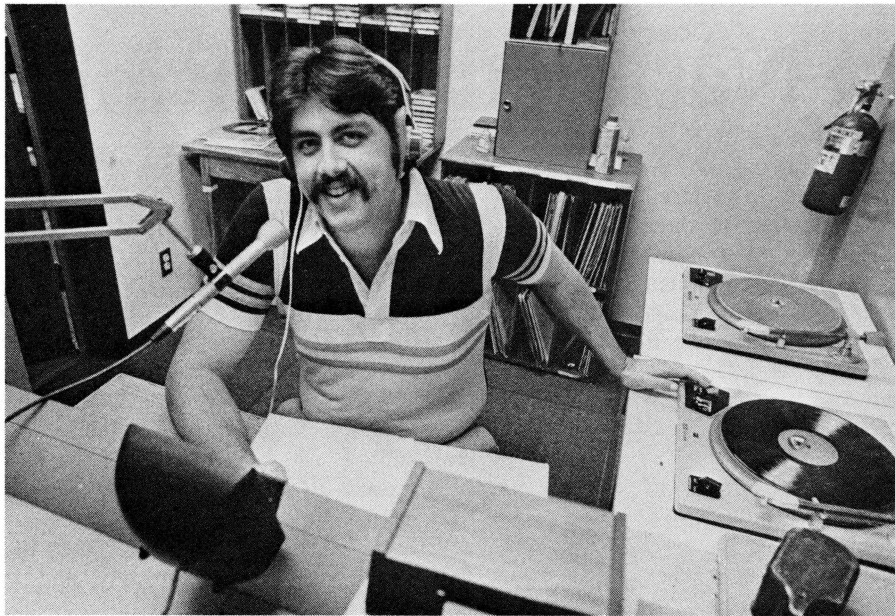
"The fact that Channel 9 programs are now receiving national as well as regional and statewide recognition demonstrates the calibre of production at this tri-state production station."

Dr. David L. Rice, speaking for ISUE, says, "This campus is pleased to have this honor bestowed upon one of our student groups. We are proud of the achievement of the Mid-America Singers, of Jon Carlson, and of WNIN."

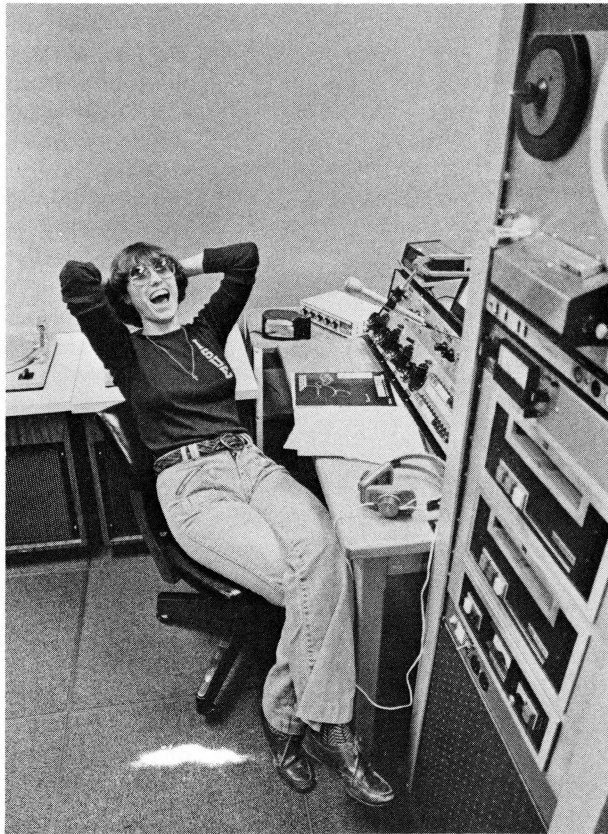


# WSWI "ON THE AIR"

by Ann Humphrey



*Hal Lowrance, program director of WSWI, is a junior communications major from Henderson, Kentucky.*



*WSWI news director Lana Goffinet obviously enjoys her work.*

The closed circuit radio programs now being heard in the University Center are the result of almost a half year's planning and tedious work.

Most of the work is the combined effort of Jim Watterson, a junior from Evansville; Hal Lowrance, a junior from Henderson, Kentucky; Lana Goffinet, a senior from Evansville and Seymour Brodsky, assistant professor of communications who is advising the group.

What is hoped to be eventually a full scale broadcasting station heard throughout the tri-state area began last May with the writing of a standard operating procedure manual.

The manual, written not only for the present, but with future plans considered, covers Federal Communication Commission and National Association of Broadcasters rules and regulations that would govern the station if it was broadcasting over public airways at present.

In addition, the manual outlines procedures for using the control board as well as a basic introduction to radio broadcasting. Overall, the manual is directed toward an academic introduction for students entering radio as a career.

According to Brodsky, the present operation is a test run in preparation for a possible license so ISUE can eventually have a live radio station. Still, several factors must be completed before this becomes a reality.

"First," says Brodsky, "we would conduct a feasibility study to determine what benefits ISUE might derive from live broadcasting. Then we would retain a consulting engineer to determine if there is a channel available between 82 - 92 megahertz on the FM dial. The latter is essential before an application can be submitted.

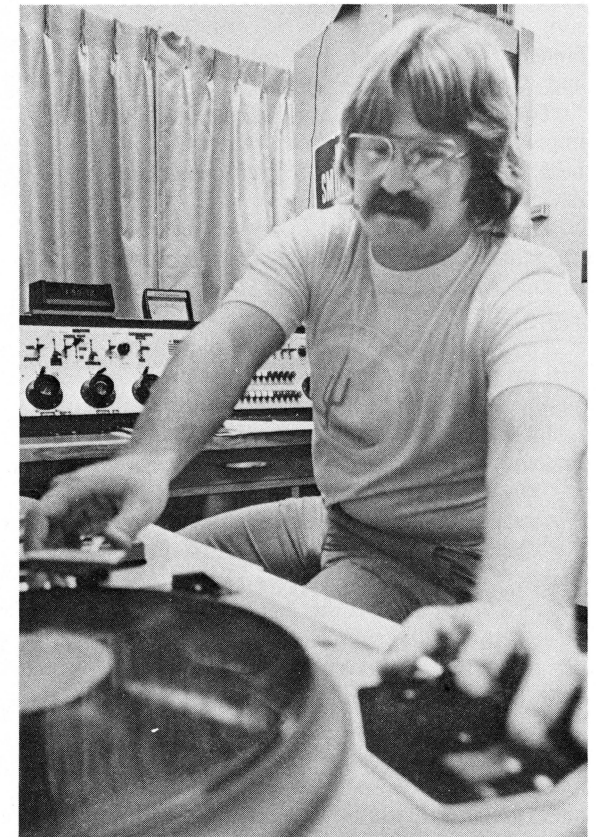
"Cost-wise in our favor," Brodsky stresses, "is the studio and professional equipment already on campus. Also the new television tower could be further utilized for a radio

antenna."

The detailed steps necessary to finalize a campus radio station are involved and time consuming, but if and when the present goals are reached, ISUE will be prepared to utilize the station within its broadcasting curriculum.

Meanwhile, students are taping three hours of programs including music, news, and campus announcements.

They are also recruiting other students to work as disc jockeys for the station which operates under the call letters of WSWI.

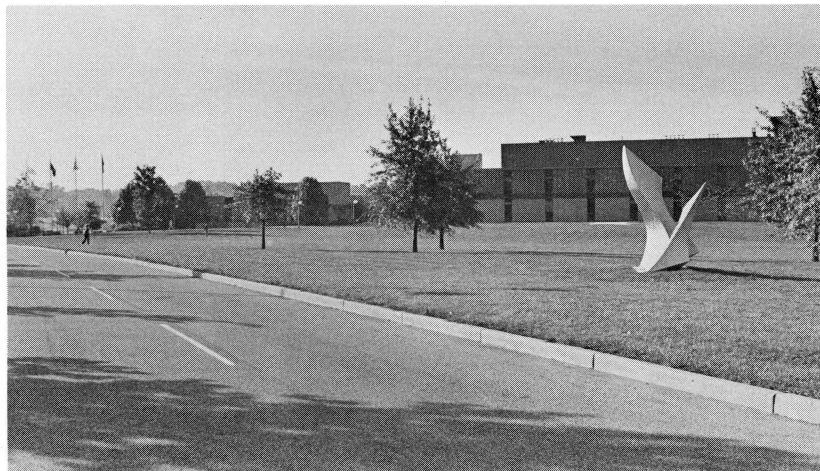


*Jim Watterson has many tasks to perform as station manager.*



# CENTURY CLUB

100



## WORKING FOR YOU.



### CENTURY CLUB GIFTS HELP SUPPORT ISUE

The Century Club is an association of many special friends in the community who support public higher education at ISUE by contributing \$100 or more annually to the ISUE Foundation. The ISUE Foundation is a non-profit organization established in 1969 by leading citizens "to provide support for Indiana State University Evansville, its faculty and students, and to promote, sponsor and carry out scientific and related activities and objectives at ISUE."

Century Club members know the important economic, cultural, and educational contribution the University makes to the community and recognize the need to support campus projects not funded by State appropriations. They enjoy a sense of satisfaction from helping the growth of public higher education in Southwestern Indiana.

Century Club membership gifts are used for scholarships for promising young people, research for faculty and for many special programs needed to continue educational excellence at ISUE.

To give your support to higher education at ISUE through the Foundation Century Club, complete the membership form provided and mail it with your tax deductible contribution to ISUE Foundation, 8600 University Boulevard, Evansville, IN 47712.

Membership is open throughout the year and renewal statements are sent 30 days prior to the member's Century Club anniversary date. If you are currently a member, share with a friend this opportunity to join.

### MATCHING GIFTS PROGRAM

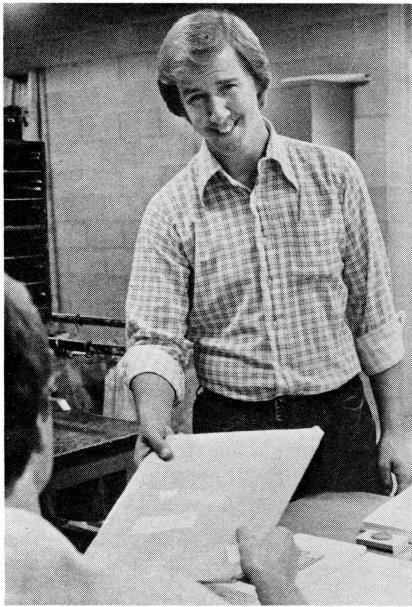
Many companies encourage their employees to make financial contributions to aid educational institutions. They believe education plays an important role in society and desire to support those institutions where a good many professional and management personnel are trained for future employment in the community. For these reasons, numerous industries and corporations provide direct contributions to educational institutions by matching gifts given by its employees. For example, if an employee contributes \$100 to the Century Club, the employer can make a matching gift through the company's Matching Gift Program. The total contribution would be doubled to \$200, thus widening the base of educational giving. Find out about your employer's program and obtain the appropriate forms to send along with your gift.



# Meet the people of ISUE

One of the most familiar and cheerful faces on the ISUE campus is that of Paul Wright, a student worker for the campus mail service. Paul makes his rounds more than once a day, leaving mail and optimistic thoughts at each stop.

Paul is a junior majoring in Economics. He is attending ISUE because, "being married, the University serves a purpose of convenience and I get an education at a fair price."



"The department of my major gives a good selection of courses and the professors are well-educated in their field and show an interest in my self-development," Paul adds.

His career goals are aimed toward an area in marketing and sales with a local industrial firm. Aside from his studies, his family and his work, Paul is active in Chi Gamma Iota fraternity.



Kimberly Jo Hinton enjoys attending ISUE so much she wishes she could live right on the campus grounds to make it more convenient not only for class, but also for attending dances, lectures, movies, and other events sponsored for the students.

Kim is a 19-year old junior majoring in Sociology who wants to specialize in criminal justice. She is interested in probation, parole, and prison reform. Of her educational experience at ISUE, she boasts, "Since I have been attending the University, I have found the system to be very satisfactory . . . the Social Science Division has a well-functioning program."

A recipient of the Century Club's professional development scholarship, Kimberly acknowledges, "the financial aid I received at ISUE has helped me tremendously."

In addition to her classes and campus activities, Kim works part time as a supervisor for the Evansville Youth Employment Program and is a member of Evansville's Human Relations Commission.

## Students who benefit from Century Club Gifts . . .



The lilting voice of Nancy Ruth Allen greets callers to campus each afternoon with a pleasant "Good Afternoon, Indiana State University Evansville!" As a student worker at the ISUE switchboard, Nancy keeps busy acting as a receptionist for the administrative offices and studying. With caring for her three children, there is little time for outside activities because she concentrates on "getting a real education."

The senior English major says of ISUE, "I love it, I love it," and puts emphasis on the fact that "it is much less expensive . . . and close to my home."

Nancy believes "the faculty are really interested in the individual student."

Her goal is to graduate with a degree in secondary education and become an English teacher in one of the local Christian schools.



# . . . And those who help provide educational services for the community.

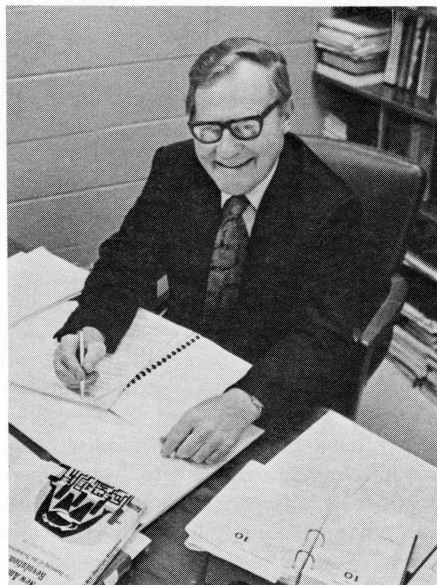


As a seven-year employee of ISUE's maintenance department, Jim Baumeyer likes the "contact with people" on campus. He says his job "puts me in every department of the University where I personally come in contact with people and this has always been very important to me."

After serving 20 years on the Evansville Police Department, he felt fortunate when selected to work at ISUE because "this is a growing university where I can expand my knowledge and meet and work with people of all walks of life."

As an employee of the campus, he has had the opportunity to attend seminars to broaden his knowledge in the electrical and air-conditioning field and says, "My job at ISUE has been very educational as well as fulfilling."

Jim participates in numerous civic and professional organizations and is currently President of the Hadi Shrine Motor Corps.



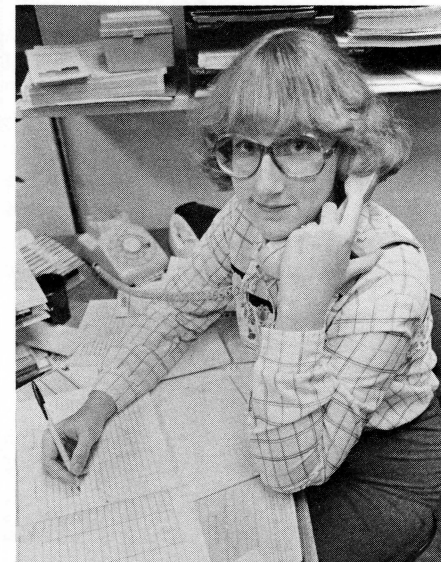
One of ISUE's senior faculty members, Dr. Daniel Miller, Professor of History, has been Chairman of the Social Science Division for 11 years. His career at ISUE began in 1965 as a part-time faculty member. He was named Division Chairman in 1966.

Dr. Miller enjoys working at ISUE as a teacher and as a division chairman and admits "both aspects of my job are challenging."

"ISUE is a comparatively new institution, without the traditional straitjacket of long-established procedures and concepts . . . it is one dedicated to serving this community, which happens to be my home. As a chairman, it has been my good fortune to have a role in helping to build a sound academic base for the area of social sciences. As a teacher, I have tried to exemplify these attitudes and standards which I feel ISUE must expect of its faculty."

"The pursuit of these goals gives me a great deal of personal satisfaction. I wouldn't trade places with anyone on this earth." Dr. Miller says emphatically.

If you want to know what is happening on campus at any given time, Linda Cleek can tell you. A large part of her responsibility in the Office of Continuing Education is the scheduling of the University Center facilities. Many student events and off-campus group meetings take place in the University Center, and Linda assists in coordinating these activities.



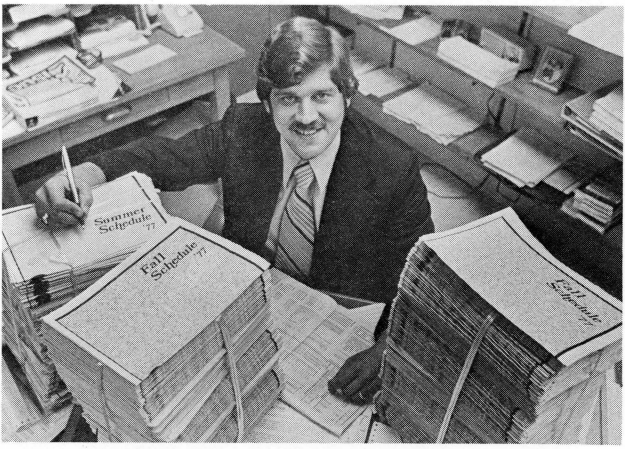
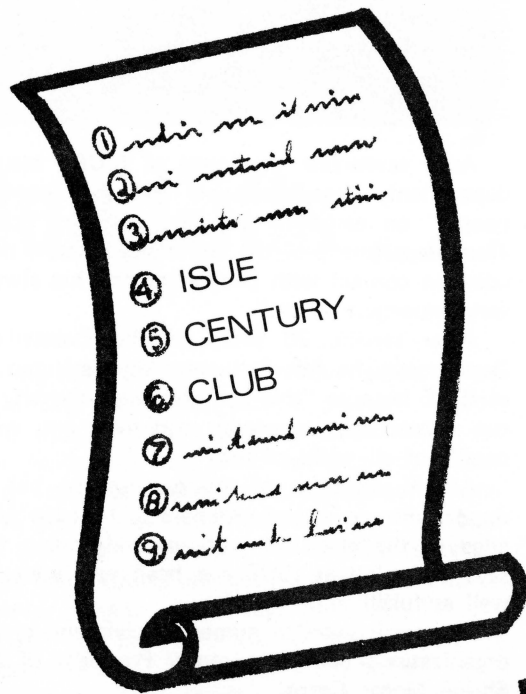
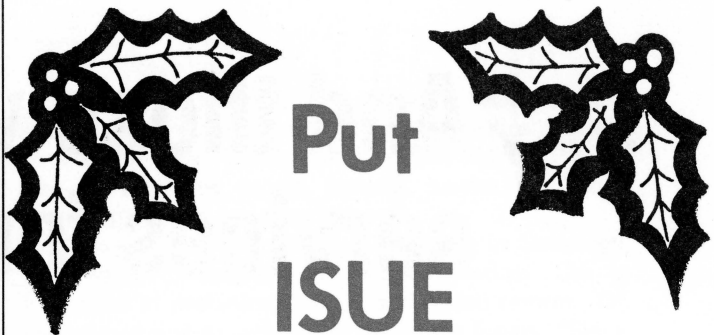
She has been employed at ISUE for three years and as an administrative secretary, she works with community service programs, noncredit classes, conferences on the campus, and sees to the details of special events in the University Center.

When the Office of Continuing Education opened its doors on campus, Linda was there to help get the programs started. Of her work at ISUE, she says, "one of the most satisfying experiences in life is to be a part of the growth and development of a worthwhile entity, whether it's a child, a garden or an institution. For me, working at ISUE is such an experience."

Aside from her full-time employment at ISUE, Linda is working toward her college degree by taking evening classes each semester at ISUE.



# Put ISUE on your Gift List



Getting classes scheduled, rooms assigned, bulletins printed, and students registered is no easy task, but John Deem, ISUE's Registrar, pulls it off each semester with apparent ease.

As Registrar, he is responsible for the academic records and the registration of all students.

"My employment at ISUE has afforded me an opportunity to meet and know thousands of individuals—students, employees, and community leaders—all of whom have played an important part in the growth and development of my life," says Deem.

He feels, "Getting to know the student personally, and being able to help them meet their goals, brings a great deal of personal satisfaction."

One of his greatest rewards during the decade since 1967, when he joined ISUE, has been "being a part in bringing public higher education to those in the Evansville and surrounding areas who might not otherwise have been able to attend a university."

Away from ISUE, John is active as a lay leader and Sunday school teacher in his church. He serves as a director of the Volunteer Action Program, is a member of the West Side Nut Club, and is involved in other civic organizations.

He looks forward to the day when his two sons will attend ISUE.

For information concerning gifts for other purposes, call or write:  
 Foundation Office  
 Indiana State University Evansville  
 8600 University Boulevard  
 Evansville, Indiana 47712  
 812 / 464-1918

INDIANA STATE UNIVERSITY EVANSVILLE FOUNDATION

MEMBERSHIP FORM

I (we) wish to contribute \$ \_\_\_\_\_ to the ISUE Foundation for current membership in the CENTURY CLUB. By doing this we will assist the campus and the students in reaching important goals they have set for themselves.

Name \_\_\_\_\_  
 Address \_\_\_\_\_  
 City—State—Zip \_\_\_\_\_

This membership is:  
 an individual membership  
 a husband/wife membership  
 an institution/company membership  
 company will match membership gift

Additional gift possibilities:  
 \$ \_\_\_\_\_ Varsity Club  
 \$ \_\_\_\_\_ Book Club  
 \$ \_\_\_\_\_ Scholarships  
 \$ \_\_\_\_\_ Memorial Giving  
 \$ \_\_\_\_\_ Where the need is greatest

Make checks payable and send this form to:  
 Indiana State University Evansville Foundation  
 8600 University Boulevard  
 Evansville, Indiana 47712  
 The Foundation Office will provide an official receipt and acknowledgement.



# Masters of Public Administration Program Offered at ISUE

The Masters of Public Administration degree program is being offered by Indiana State University on the Evansville campus this fall.

The program is designed primarily to meet the in-service needs of professionals and administrators in governmental and governmental-related agencies and organizations. It also will prepare students for administrative careers in government service. All course work necessary for the completion of the degree is expected to be made available in the Evansville area. The MPA program at ISU was approved by the Indiana Commission on Higher Education in December 1976.

The program requires 42 semester hours, including a one-semester full-time internship, for which work experience may be substituted if approved by the MPA faculty committee. Other requirements include a core of three courses of three semester hours each, 21 hours of elective courses to be selected by the student and his ad-

visory committee, combined with from three to 12 hours of internship or experiential credit.

Two courses are being offered this fall. They are the introductory course, Seminar in Public Administration, taught by Dr. William P. Maxam, Director of the Program; and a management course, Organization Theory, taught by Dr. Harlan Van Over, ISUE Professor of Business.

Persons who have completed a bachelor's degree, and as a part of that degree work, have completed the equivalent of 12 semester hours in social science and/or business administration courses with an acceptable grade point average will have sufficient preparation for successful completion of the MPA program.

Four MPA classes are expected to be offered on the ISUE campus in the spring semester. Questions regarding the program should be directed to Dr. Edward Jones, Director of Continuing Education at ISUE.

## ISUE TO OFFER AMA EXTENSION INSTITUTE COURSES

Indiana State University Evansville, through its Office of Continuing Education and Division of Business, will offer courses this spring in cooperation with the American Management Associations Extension Institute.

Beginning in January 1978, a certificate in management program will be offered on the campus using ISUE business faculty and AMA Extension Institute's textbooks and structure for the course.

According to Dr. Larry Arp, Associate Professor of Business and Director of the program, the program will "bring quality management training to the practicing manager of local companies." He explained that the program is especially beneficial because it combines AMA Extension Institute's nationally recognized training series

with expert university instruction.

"Since many of our faculty have been in professional positions in both the education and business worlds, they have a blend of expertise that will benefit the student," Arp said.

The AMA Extension Institute university program was begun in 1976 and is currently offered at 75 campuses in 39 states.

Beginning in January, four classes, "What Managers Do," "Planning and Control for Managers," "Accounting for Managers," and "Modern Marketing and Company Objectives," will be offered. Students may enroll in only one course or may take the entire series, depending on their interests and needs.

For further information, call the Office of Continuing Education at 464-1863.



**1977-78 VARSITY CLUB BOARD OF DIRECTORS . . .** Members of the ISUE Varsity Club Board of Directors are left to right (seated) David Kinsey, Chris May, Lana Brunson, Jane Davis, Barney Hubbard, and Dan Miller. Standing are Donald Bennett, Larry Arp, Charles Bertram, Wayne Boultinghouse, Howard Dunn, Jim Will, Ernie Brothers, Bill Kothe, and Byron Wright.

## GRANT TO LIBRARY SERVICES

ISUE Library Services has received a grant award in the amount of \$3,855.00 under the College Library Resources Program of the Department of Health, Education, and Welfare (HEW).

Bette Walden, Director of Library Services, will act as the grant administrator. The grant will permit the strengthening of library collections in all academic areas. This year, special emphasis will be given to the newly-established four-year mining engineering program and the technical publications necessary to its effective support.



# the GRADUATE ROUNDUP

The Graduate Round-Up features alumni of Indiana State University Evansville who are making noteworthy contributions in their respective fields. Information is gleaned from the Alumni Information Card, friends of alumni, and the Alumni Association officers and Executive Board. Alumni are invited and encouraged to record their accomplishments on the Alumni Information Card (found on the next page) and return it to the ISUE Office of Alumni Affairs.

## 1971

**PAUL PEARCE** and LeeAnn Brakie were recently married in Mt. Vernon, Indiana. Paul is a production sponsor at Babcock & Wilcox in Mt. Vernon.

## 1972

**KENDAL BRYAN**, who majored in accounting, has accepted an accounting position with Ellis Grain Company in Henderson, Kentucky.

**DENNIS HERRENBRUCK** was recently married to Susanne Hambury. Dennis is employed by Old National Bank.

## 1973

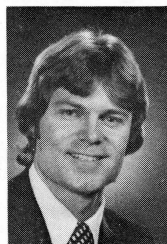
**JOYCE CRABTREE**, an accounting graduate, has accepted a position with Laketon Asphalt Refining, Inc. in Evansville.



**KENNETH DOSSETT**, an accounting graduate, is enrolled in the Graduate School of Business at Loyola University in Chicago.

**FIRST LIEUTENANT BOBBY L. FAIRLESS** has received a regular commission in the United States Air Force, and is assigned at March Air Force Base, California, as a stratofortress instructor copilot with a unit of the Strategic Air Command. He completed an M.B.A. degree in 1977 at Southern Illinois University at Carbondale.

**TERRY R. HITCH**, a technical sales representative for Eastman Kodak's Graphics Marketing Division, was recently married to Pamela J. Fisher. They will live in the Hartford, Connecticut, area.



**CHRISTINE PAYNE** has accepted a position as physical education teacher at the University of Evansville.

**LARRY M. WOODALL** was recently married to **ROSALIE LODATO**; both are ISUE graduates. Rosalie teaches at Plaza Park School and Larry is employed by Bernardin, Inc.

## 1974

**JOHN BESING** is attending medical school at the Universitat del Este Central in the Dominican Republic.

**ERNIE HICKS**, a communications major, is Chief News Photographer for WFIE-TV, Channel 14 in Evansville.

**CHARLES C. JOCHIM** was recently married to MariLynn Corney. Charles, who received a B.S. degree in marketing from ISUE, is employed by D. Patrick Imports in Evansville.

**CHERYL L. STROUD** is a substitute teacher with Evansville-Vanderburgh School Corporation.

**MONICA M. WEINZAPFEL** has accepted a position as costume/teacher with the University of Alabama in Birmingham. She received her M.F.A. degree from Northwestern University this past summer.

**RUTH E. ZIMMERMAN** was recently married to James R. Baize. Ruth and Jim are living in Ashland, Ohio, where Jim attends Ashland Theological Seminary. Ruth received her master's degree in education from Texas Christian University in Ft. Worth, Texas.

## 1975

**ROBERT A. BIPPUS**, an accounting major, has accepted a position with the Raytheon Company in Lexington, Maryland.

**MICHAEL DUNCAN**, a business education major, has accepted a teaching position with Clarksville High School in Clarksville, Indiana.

**ROBERT G. MEYERS** is the district controller for Hertz Corporation Truck Division in Evansville.

**JEFFREY A. WYBER**, an accounting graduate, has accepted the position of controller at Mesker Steel Corporation in Evansville.

## 1976

**CATHY BESING** has accepted a position as Executive Secretary to the Vice President of Jarretts.

**LEE C. BERG, Jr.**, a social science major, is teaching in the St. Bernard Elementary School in Rockport, Indiana.



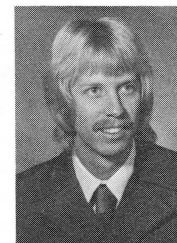
**MARTHA DEWES**, an allied health graduate, has accepted a position as radiological technician at Deaconess Hospital.

**ANN DICKS**, a sociology graduate, has accepted a position as rehabilitation therapist assistant at the Evansville State Hospital.

**LYNN MASSIE** was recently married to **MARK GRIESE**. Both Lynn and Mark are ISUE graduates. Lynn is a bookkeeper for Ziedler Floral Company and Mark is an assistant chemist at the Evansville Waterworks Department.

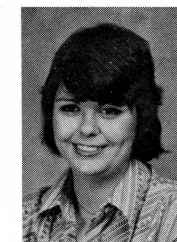
**NANCY NEALE**, an elementary education major, has accepted a teaching position with the Catholic Diocese of Evansville.

**ROBERT O'TAIN**, a psychology graduate, has accepted a position with the Vanderburgh County Welfare Department in Evansville.



**CLEMENTINE PETERS**, a marketing graduate, has accepted the position of account supervisor in the Commercial Sales Division at Bernardins.

**CINDY POEHLEIN**, an English / communication graduate, has accepted a position with Larco Associates in Evansville.



**LEROY** and **CAROLE PRANGE**, both ISUE graduates, make their home in Evansville. Leroy is a senior customer engineer with IBM Corporation.



**JAMES PROBERT**, a general business major, has accepted the position of claims representative for Transamerica Insurance Corporation.

**NICHOLAS RUSH**, an accounting graduate, is working as a receiving agent for Riverside Supply in Evansville.

**MICHAEL SCHAEFER**, an elementary education graduate, has accepted a teaching and coaching position with Knox Community Schools in Knox, Indiana.



**DEBBIE SCHMUCK**, an office management graduate, has accepted a confidential secretary position with Bucyrus Erie.



**DR. TERRY UNFRIED** was recently married to **LUCY SENSMEIER**, who is also a graduate of ISUE. Lucy is employed by Fiberfil and Terry is in private dentistry practice in Ft. Branch, Indiana.

**1977**

**MICHAEL ASHCRAFT**, a political science/sociology graduate, is attending graduate school at Purdue University in the Masters in Public Administration program.

**TIM BORN** is attending Law School at Pepperdine University in California.

**DEBORAH L. BRACK** was recently married to Steven W. Byrun. Deborah is employed by the Warrick County School Corporation.



**YVONNE DRAPER**, an elementary education major, has accepted a teaching position with the Henderson County School Corporation.

**DAVID DUNNIGAN** is attending graduate school at the University of Connecticut in the bio-chemistry program.

**LARRY ELLERBROOK** was recently married to Kathy Dixon, who is an ISUE student. Larry is an accountant with John T. Ferrell Accountancy Corporation.

**ROSEMARY FISCHER**, an elementary education graduate, is currently employed as a Spanish teacher at Southwest Dubois County School Corporation in Huntingburg, Indiana.



**KENNETH R. FISHER**, a life science major, has accepted a position with Jack Bamer Construction Company.

**CINDY FLECK**, a business major, has accepted a position with PBS Chemical Company in Evansville.

**ANGELA GREBE**, a dental hygiene major, is currently working for a dentist in Boonville, Indiana.

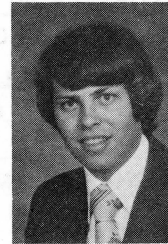


**BECKY WEBER** was recently married to Jim Hadley. They will be living in Germany.

**PAMELA HESEMAN**, an elementary education major, is a fourth grade teacher at Evansville Christian School.

**MARY MELISSA ALCORN** was recently married to David D. Macke. Mary was promoted to media director for the R.M.F. Communications Company.

**LEE MAGLINGER**, a psychology graduate, has accepted the position of social worker with Medco Center in Owensboro, Kentucky.



**MIKE MASON**, an accounting graduate, has accepted a position with ISUE as coordinator of cooperative professional programs.

**PATRICIA PARKINSON** was recently married to **MARK W. POWERS**. Both Patricia and Mark are graduates of ISUE. They will live in Washington, Indiana, where Mark is manager of the Daviess County Farm Bureau Co-op.

**WILLIAM SEARL**, an accounting major, has accepted a position as an accountant with the U.S. Army at Ft. Benjamin Harrison Finance Center in Indianapolis.

**GREG A. SMITH** has accepted a position in advertising, promotion, and sales with Strange Engineering in Evanston, Illinois.

**JAN ROMERHAUSEN SMITH** graduated as a dental hygienist. She now lives in Vincennes, Indiana where she is employed by Dr. Whaley.



**LISA BENTON SMITH** became the bride of Thomas D. Smith recently. Lisa received her B.S. degree in elementary education.



**L. DWIGHT SONNERS**, a finance major, has accepted a position as marketing and sales analyst with Kimball International in Jasper, Indiana.

**DEBRA BOWERS** was recently married to Michael E. Taylor. Debbie is a dental hygienist in Mayfield, Kentucky.

*Graduate Roundup continues on next page . . .*

**Alumni Information Card**

Please complete the Alumni Information Card with updated material and send to Director, Alumni Affairs, ISUE.

NAME \_\_\_\_\_

ADDRESS \_\_\_\_\_

CITY \_\_\_\_\_ State \_\_\_\_ Zip \_\_\_\_\_

Present position (list title and date you started this position):

Recent personal information (Include marriage, births, awards received, business promotions, and other pertinent personal information.)

\_\_\_\_\_

\_\_\_\_\_

Year graduated and major field of study.



*Graduate Roundup, continued from preceding page.*

**JUDITH L. WEIR**, a psychology major, now lives in Villa Park, California.

**JANE L. WOLF** is currently working for St. Vincent's Day Care Center as a kindergarten teacher.

**GINA L. ZEHNGUT**, a dental hygiene graduate, is a receptionist at Hollywood General Studios in Los Angeles, California.

**DIXIE A. WEST**, an accounting major, is working for the Federal Energy Administration. She works and lives in Amade, Nebraska.

**THOMAS E. WILLIAMS**, a communication major, is now enrolled at the University of Evansville in graduate school. Tom is working as a disc jockey at the Holiday Inn North in Evansville.

## Alumni Additions



**MARY BETH BENDER**, '74 and husband **PHILIP**, '74 a son, Matthew Valentine, born September 8, 1977.

**KENDAL BRYAN**, '72 and wife Rita, a daughter, Elizabeth Devereaux, born September 1, 1977.

**JAMES LEVELL**, '71 and wife Patricia, a son, Michael Gene, born August 2, 1977.

**MARSHA MILLER**, '74 and husband **LLOYD**, '74 a son, Jason Kyle, born April 22, 1977.

**MICHAEL WEMPE**, '76 and wife Linda, a daughter, Jill Renee, born September 5, 1977.

**ARTHUR WERNER**, '74 and wife Mary Jo, a son, David, born September 11, 1977.

## RAD TECH SCORES BEST IN INDIANA

Graduates of Indiana State University Evansville's radiologic technology program compiled the highest composite certification exam score in Indiana. Nationwide, only eleven programs scored higher than ISUE's score of 94%.

The examination, required of all radiologic technology graduates wishing to be certified to practice, is administered by the Educational Testing Service for the American Registry of Radiologic Technologists. Students from approximately 1,000 programs were tested; 21 of those programs are located in Indiana.

Dr. Robert L. Reid, Vice President for Academic Affairs at ISUE said the test results indicate the quality of the ISUE program. "It is gratifying to know that when our students leave ISUE to assume health service careers, they are among the

best prepared students in the nation," he said.

Indiana State University Evansville has been offering radiologic technology in cooperation with Deaconess Hospital since 1974 when the program formerly offered at Deaconess was transferred to ISUE. A restricted enrollment program, it accepts only 10 to 12 students each year. Upon completion of the radiologic technology program, students are granted the Associate of Science degree. A radiologic technologist assists in operating x-ray equipment.

Seven graduates took the certification examination given in November, 1976. They are: Deborah Clements, Martha Dewes, Rita Fine France, Cathy Heath, Randy Englebright, and Vicki Tramel Jones. One student asked that the name not be released.

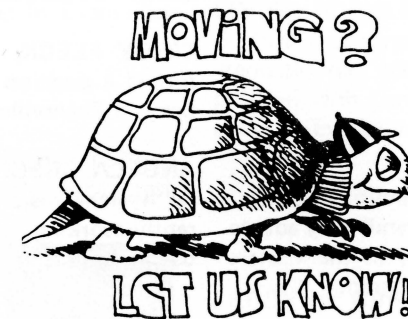


### ALUMNI FUND BOOK DROP

On the boulevard in front of the Library, something new has been added—a book return available 24 hours a day. The book return, or book drop, will enable people to return books and other non-breakable materials from their car at any time.

ISUE's Alumni Association funded the purchase of the book drop at the request of Bette Walden, director of library services. Ms. Walden said that students have long needed the means of returning materials when they are on campus and the Library is closed. She is sure all current and future students will benefit from this gift of the alumni.

Ralph Kent, director of alumni affairs and career placement, is shown here making good use of the book drop.



Please notify the alumni office of any address changes so that we can correct our records.



# ISUE ALUMNUS OF THE YEAR AWARD

**Eligibility:**

Any ISUE alumnus shall be eligible to receive the "ISUE Alumnus of the Year Award," except those members of the Alumni Board and their spouses. The Award shall be given for humanitarian, heroic, civic or other noteworthy activities deemed commendable by the award committee.

**Selection and Responsibility of Awards Committee:**

The newly-elected President of the Board will appoint a chairman of the Awards Committee and as many committee members as he deems appropriate to fulfill the committee's responsibilities. It will be the committee's responsibility to solicit candidates for the award, judge the candidates on their merits and submit three finalists to the entire board for selection of the recipient. The recipient shall be selected by a plurality of the members of the board present at the March meeting of the Alumni Association Board of Directors.

**Deadline for Entries:**

All entries must be postmarked no later than February 1, 1978, or delivered in person to the Office of Alumni Affairs on or before that date.

Mail Entries to: Ralph Kent  
Alumni Affairs Office  
Indiana State University Evansville  
8600 University Boulevard  
Evansville, IN 47712

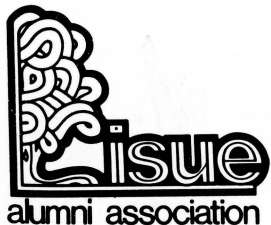
Name and Address of Nominee: \_\_\_\_\_

Class Of: \_\_\_\_\_

Personal Biography: \_\_\_\_\_  
\_\_\_\_\_  
\_\_\_\_\_  
\_\_\_\_\_  
\_\_\_\_\_  
\_\_\_\_\_  
\_\_\_\_\_  
\_\_\_\_\_  
\_\_\_\_\_  
\_\_\_\_\_  
\_\_\_\_\_

Family Information: \_\_\_\_\_  
\_\_\_\_\_  
\_\_\_\_\_  
\_\_\_\_\_

Reason for Submitting Nomination: \_\_\_\_\_  
\_\_\_\_\_  
\_\_\_\_\_  
\_\_\_\_\_  
\_\_\_\_\_  
\_\_\_\_\_  
\_\_\_\_\_



Submitted by: \_\_\_\_\_  
Signature