

See it to **BELIEVE IT**

University of Southern Indiana

**GLVC Champions**  
1980 • 1981 • 1985  
1994 • 1996  
1997

**NCAA II Elite Eight 1994 • 1995**

**NCAA II  
Champions**  
1995



**NCAA** 1978 • 1980 • 1981 • 1985 • 1987 • 1990 • 1993  
**Tournament** 1994 • 1995 • 1996 • 1997 • 1998 • 1999 • 2000

**Men's Basketball MEDIA GUIDE**



S  
C  
R  
E  
A  
M  
I  
N  
G  
E  
A  
G  
L  
E  
S



S  
C  
R  
E  
A  
M  
I  
N  
G  
E  
A  
G  
L  
E  
S



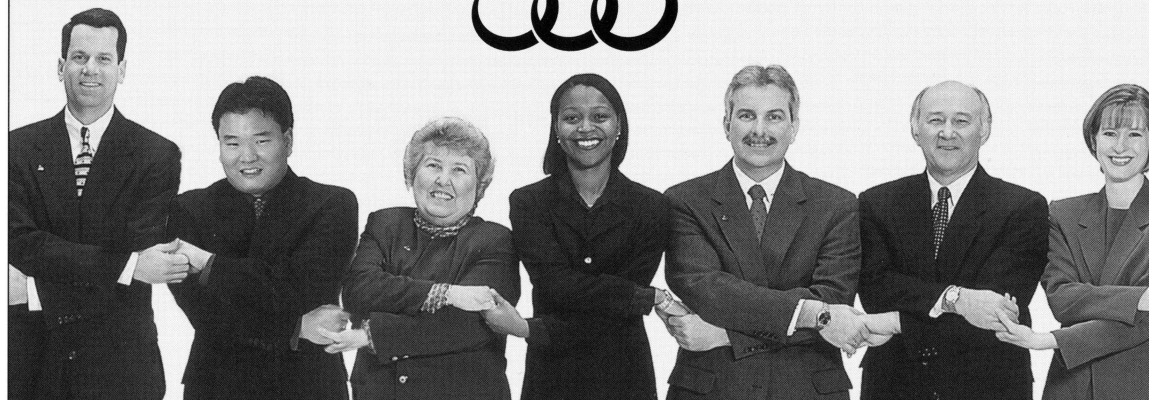
GO  
SCREAMING  
EAGLES

## Team play is our game plan.

From one Evansville institution  
to another – Go Team!

Thank you for making us your bank in Evansville.  
For over 150 years, we've delivered personal and  
business financial solutions to the tri-state area.  
Today, we're proud to be a part of many great teams.

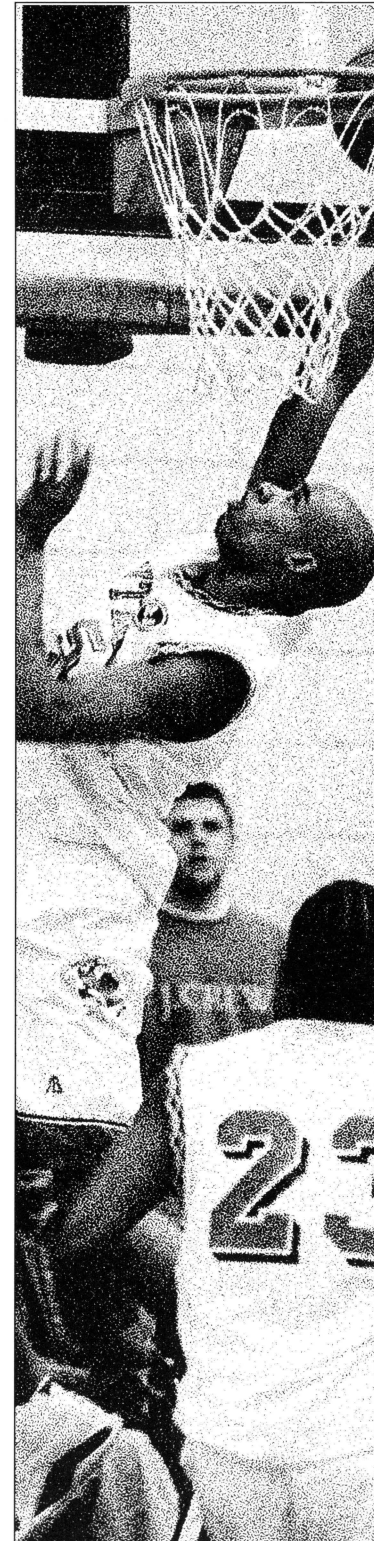
Stop by your neighborhood Integra Bank today  
or call us at 800-467-1928



Together works...for you.

[integrabank.com](http://integrabank.com)

Member FDIC

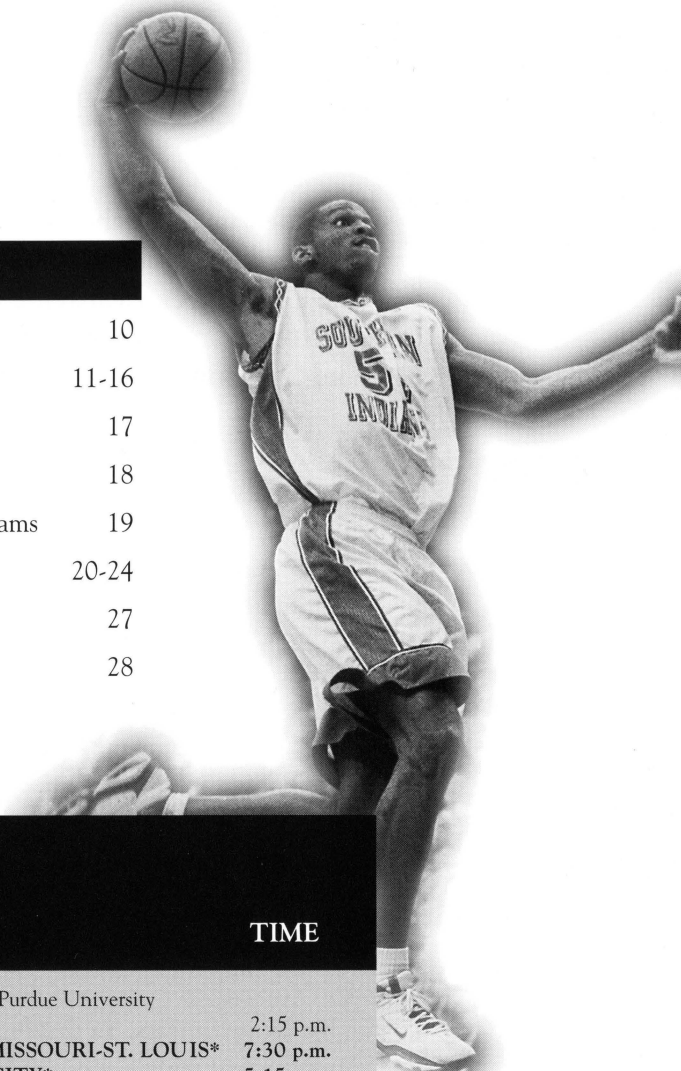




# 2000-2001 USI Men's BASKETBALL SEASON

## Table of Contents

About USI	2-3	2000-01 Team Roster	10
USI Administration	4	Meet the Screaming Eagles	11-16
About USI from the Student Athletes	5	2000-01 USI Opponents	17
Men's Basketball Outlook	6	1999-2000 USI Statistics/Results	18
Men's Basketball Coaching Staff	7-9	1999-2000 GLVC Standings and All-GLVC Teams	19
USI Head Coach Bruce Pearl	7-8	USI Record Book	20-24
Associate Head Coach Rick Herdes	9	2001 GLVC Tournament Schedule	27
Assistant Coach Ken Johnson	9	Screaming Eagles Travel the USA	28



SCREAMING EAGLES

## 2000-2001 Men's Basketball Schedule

DATE	OPPONENTS	TIME	DATE	OPPONENTS	TIME
Sat., November 18	HUNTINGTON COLLEGE	7:30 p.m.	Sat., February 3	@ Indiana University/Purdue University Ft. Wayne*	2:15 p.m.
Sat., November 25	MISSOURI SOUTHERN STATE COLLEGE	3:15 p.m.	Thu., February 8	UNIVERSITY OF MISSOURI-ST. LOUIS*	7:30 p.m.
Thu., November 30	INDIANA UNIVERSITY/PURDUE UNIVERSITY FT. WAYNE*	7:30 p.m.	Sat., February 10	QUINCY UNIVERSITY*	5:15 p.m.
Sat., December 2	SAINT JOSEPH'S COLLEGE*	3:00 p.m.	Tue., February 13	@ Southern Illinois University Edwardsville*	7:45 p.m.
Tue., December 5	@ Henderson State University	7:30 p.m.	Thu., February 15	@ University of Wisconsin-Parkside*	7:45 p.m.
Sat., December 9	SOUTHERN ILLINOIS UNIVERSITY EDWARDSVILLE*	7:30 p.m.	Sat., February 17	@ Lewis University*	3:15 p.m.
Sat., December 16	OAKLAND CITY UNIVERSITY	3:15 p.m.	Thu., February 22	KENTUCKY WESLEYAN COLLEGE*	7:30 p.m.
Tue., December 19	ABILENE CHRISTIAN UNIVERSITY	7:30 p.m.	Sat., February 24	BELLARMINE UNIVERSITY*	7:30 p.m.
Fri., December 29	FERRIS STATE UNIVERSITY	7:30 p.m.	<b>Great Lakes Valley Conference Tournament</b> (Roberts Stadium, Evansville, Indiana) Wed., February 28 – Sat., March 3		
Thu., January 4	@ University of Indianapolis*	6:45 p.m.	<b>NCAA Division II Tournament</b> Thu., March 8 – Sun., March 11: Great Lakes Regional (site to be determined) Wed., March 21 – Sat., March 24: Elite Eight (site: Bakersfield, California)		
Sat., January 6	NORTHERN KENTUCKY UNIVERSITY*	7:30 p.m.	*GLVC Games; HOME GAMES IN CAPS AND BOLD; Road Games in Italics; All Times are CST; 10/20/00		
Thu., January 11	@ Quincy University*	7:30 p.m.			
Mon., January 15	@ University of Missouri-St. Louis*	5:15 p.m.			
Thu., January 18	LEWIS UNIVERSITY*	7:30 p.m.			
Sat., January 20	UNIVERSITY OF WISCONSIN-PARKSIDE*	3:15 p.m.			
Thu., January 25	@ Bellarmine University*	7:00 p.m.			
Sat., January 27	@ Kentucky Wesleyan College*	7:30 p.m.			
Thu., February 1	@ Saint Joseph's College*	7:30 p.m.			



# About the University of **SOUTHERN INDIANA**

SCREAMING EAGLES

## **Location.**

Founded in 1965, the University of Southern Indiana is located in Evansville, the state's third largest city. From its picturesque site on the Ohio River, Evansville is a comfortable drive from the major metropolitan areas of Indianapolis, Cincinnati, Louisville, Nashville, and St. Louis.

## **Academic Life.**

The University enrolls over 9,000 students and offers undergraduate majors in 60 areas of study. Several graduate degree programs also are available.

## **Campus Life.**

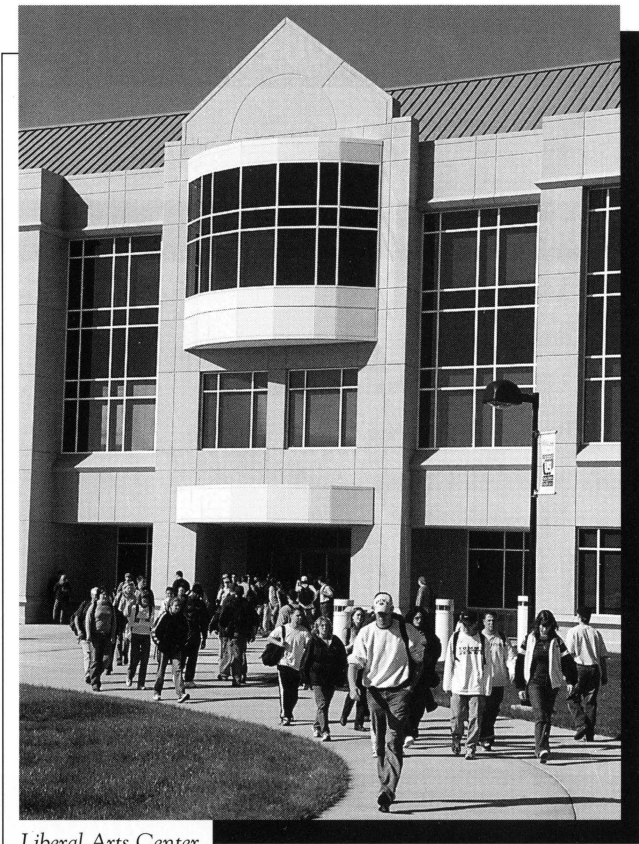
Beyond the classroom, students have opportunities to participate in more than 80 organizations offering co-curricular and extracurricular activities. Special interest clubs, student government, sororities and fraternities, music and drama groups, and other organizations enable the student to enjoy and contribute to campus life.

## **Residence Life.**

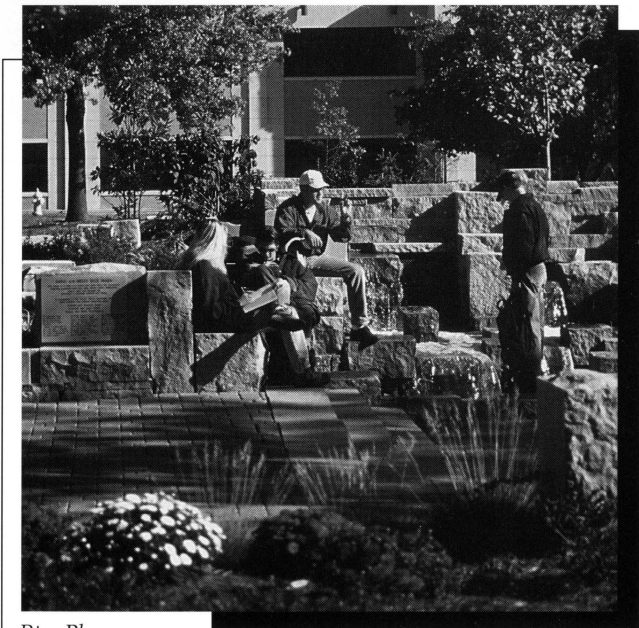
USI offers two kinds of housing. One is the conventional apartment and the other is suite-style housing in a residence hall. Computer labs, laundromats, a convenience store, outdoor recreational areas, and student lounges contribute to an efficient living environment that has proven overwhelmingly popular with students. A meal plan is available in the University Center. More than 2,500 students live on campus.

## **Financial Assistance.**

Since USI is the most affordable four-year institution in the state of Indiana, many families find that they can handle the cost of a USI education without financial aid. Many others qualify for need-based financial aid packages, including grants, loans, and jobs.



*Liberal Arts Center*



*Rice Plaza*



## Degrees offered at USI

### Undergraduate Degree Programs

The University of Southern Indiana confers eight undergraduate degrees: Bachelor of Arts, Bachelor of Science in Nursing, Bachelor of Science, Bachelor of General Studies, Bachelor of Social Work, Associate of Arts, Associate of Science in Nursing, and Associate of Science.

### Baccalaureate Degree Programs

#### School of Business

Accounting, Business Administration (students may concentrate in the following areas of interest: Accounting, Computer Information Systems, Entrepreneurship/Small Business, Finance/Economics, Management, Marketing, or Office Information Systems), Business Education, Computer Information Systems, Economics, and Marketing.

#### Bower-Suhrheinrich School of Education and Human Services

Elementary Education (includes Coaching, Computers, Junior High/Middle School and Kindergarten endorsements), Exercise Science, Physical Education, Secondary Education (high school/middle school [grades 5-12] certification is available for most majors), and Social Work.

#### School of Liberal Arts

Advertising/Public Relations, Computer Publishing/Journalism, English, French, German, History, Interpersonal-Organizational Communications, Philosophy, Political Science, Psychology, Radio-Television, Sociology (concentration in Criminal Justice available), Spanish, and Theatre Arts.

#### School of Nursing and Health Professions

Dental Hygiene Education, Health Occupations Education, Health Services, Nursing, Occupational Therapy.

#### Pott School of Science and Engineering Technology

Biology, Biophysics, Chemistry, Civil Engineering Technology, Electrical Engineering Technology, General Science, Geology, Industrial Supervision, Mathematics, Mechanical Engineering Technology.

#### Division of Extended Services

General Studies

### Associate Degree Programs\*

#### School of Business

Administrative Support Systems, Business, and Computer Information Systems.

#### Bower-Suhrheinrich School of Education and Human Services

Early Childhood Education.



#### School of Liberal Arts

Communications, Social Science.

#### School of Nursing and Health Professions

Dental Assisting, Dental Hygiene, Nursing, Occupational Therapy Assisting, Radiologic Technology, and Respiratory Therapy.

\*Note: Normally require less than 4 years of full-time study.

#### Pre Professional Curricula\*\*

Pre-Chiropractic, Pre-Dentistry, Pre-Engineering, Pre-Forestry, Pre-Law, Pre-Medical Technology, Pre-Medicine, Pre-Optometry, Pre-Osteopathy, Pre-Pharmacy, Pre-Physician Assistant, Pre-Physical Therapy, Pre-Podiatry, Pre-Veterinary.

\*\*Note: Require from 1 to 4 years of study at USI prior to applying for admission to appropriate school.

### Graduate Programs

Master of Arts in Liberal Studies  
Master of Business Administration  
Master of Science in Accountancy  
Master of Science in Education (Elementary and Secondary)  
Master of Science in Industrial Management  
Master of Science in Nursing  
Master of Social Work





**H. Ray Hoops, President**

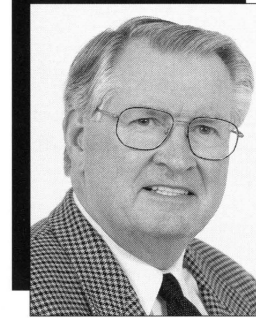
A native of Illinois, H. Ray Hoops received his undergraduate degree from Eastern Illinois University and master's and doctoral degrees in Audiology and Speech Sciences from Purdue University. He also completed an M.B.A. at Moorhead State University.

His career as a scientist and educator has included a faculty appointment jointly at the University of Michigan and Wayne State University. He published extensively and was nationally recognized for his contributions in the areas of rehabilitation of post-surgical patients with cancer of the larynx and in the analysis of language dynamics resulting from brain damage. Among his numerous publications in a variety of behavioral and medical journals was the report on a study which received the National Research Award, the highest honor of the American Speech and Hearing Association. Dr. Hoops also was named Fellow of the Association.

His administrative appointments included the directorship of the Division of Marketing in the U.S. Department of Health, Education, and Welfare. He received two national service awards for that work. He also was a Senior Fulbright-Hayes Research Scholar in the College of Medicine at the University of the Philippines. Other appointments included dean of the Graduate College of the University of Northern Iowa, associate vice chancellor for Academic Affairs for the Oregon State System of Higher Education, vice president for Academic Affairs at North Dakota State University and president of South Dakota State University.

In the six years prior to becoming the second president of the University of Southern Indiana in 1994, Dr. Hoops served as the vice chancellor for Academic Affairs at the University of Mississippi. While at "Ole Miss," Dr. Hoops received the National Council of State Governments Association Award for his pioneering work on Project '95, a blueprint for the reform of education in the state of Mississippi. He also received the Peterson's Guide Award for contributions to the education of minority students in the innovative and highly successful graduate participation initiative.

Dr. Hoops and his wife Linda, academic marketing leader for the Educational Foundation of the National Restaurant Association, are the parents of a daughter Victoria, an M.B.A. graduate of Ole Miss who is a marketing professional for the trust division of an investment firm in Louisville, Ky.



**Steve Newton  
USI Director of Athletics**

Steve Newton, a native of Terre Haute, Ind., was appointed athletic director in 1995.

Named to the NCAA II Great Lakes Regional Advisory Committee in 1997, Newton has brought enthusiasm and pride to the University and to the Athletic Department. With an emphasis on community service, he has directed the creation of the Eagle Math program for grade school students, the Letterwinners Club, the Coaches Club and the Screaming Eagle Scholarship program.

Newton also has placed an importance on assisting student athletes to reach their full potential both academically and athletically. To help the student athlete, he has overseen the creation of the extended aid program for fifth-year students.

Prior to taking the position at USI, Newton was serving as an assistant athletic director at the University of South Carolina. He was the head basketball coach at South Carolina from 1991 to 1993.

His duties at South Carolina included serving as the university representative for pre-Olympic preparations for the 1996 Olympic Games in Atlanta and the South Carolina steering committee for the Olympics.

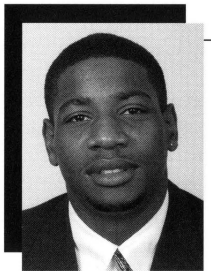
Newton served as head coach at Murray State University from 1985 to 1991. During his eight seasons as head coach, he was 136-100 (.576). His Murray State team's best run in the NCAA Tournament was in 1988 when it defeated North Carolina State University before losing to eventual national champion University of Kansas, 61-58.

As a head coach, Newton was named the Ohio Valley Conference Coach of the Year in 1988 and 1990 and National Association of Basketball Coaches District VII Coach of the Year in 1988. He led Murray State to four consecutive Ohio Valley Conference championships and post-season tournament appearances (1988-91).

Newton received a bachelor's degree in physical education and master's in education from Indiana State University. He was named a member of the Indiana Basketball Hall of Fame Silver Anniversary team in 1984. Newton and his wife Kathy have four children—daughter LeAyer, and sons Harv, Jay, and Royce.

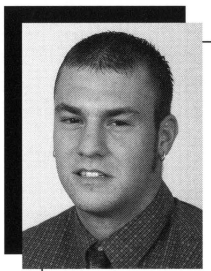


## What USI players think about **USI**



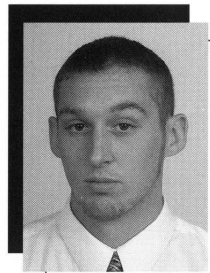
“ The coaching staff is the main reason why I’m here at USI. They really care about you and that’s A-plus in my book. ”

— Derrick Lyons, Senior



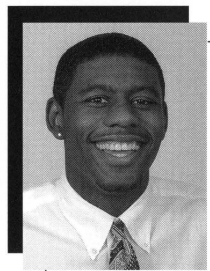
“ Everyone, from the faculty and coaches to the support staff is very supportive of all of the student athletes in helping us reach our goals. ”

— Matt Carter, Junior



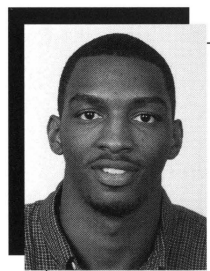
“ The fans at USI are one of the things that set the University apart from all other teams in the country. We have one of the best programs in the nation and the fans are a large part of our success. ”

— Drake Roberts, Senior



“ USI is a great school because of the great people. The University has produced quality graduates who have come back to help it grow. Great people make a great school. ”

— LaJuan Christon, Junior



“ USI has the three things which make it number one in my book. Expanding academic programs, a modern campus, and *great basketball*. ”

— Kimon Green, Senior



# Men's Basketball **OUTLOOK**

**F**or the past seven years, the road to the NCAA Division II Tournament Championship has gone through the Great Lakes Valley Conference. In 2000-01, the University of Southern Indiana men's basketball team wants the road to start in Evansville, Indiana, and end in Bakersfield, California, the site of the NCAA II Elite Eight.

The Screaming Eagles, ranked fourth in the preseason by *Preview Sports College Basketball* and *Division II Bulletin*, have been on the road to the championship more than any team in the NCAA II the last eight seasons, making it to the regional finals six times in the last eight seasons. *USI's eight consecutive appearances in the national tournament is the longest current streak in the NCAA II.*

The designer of the team's success since 1992-93 is **USI Head Coach Bruce Pearl**. Pearl, the quickest coach at any level in NCAA history to 200 victories, has an eight-year record of 205-42 (.830 winning percentage). He also led USI to the NCAA II Championship in 1995 and the NCAA II finals in 1994.

Pearl will face a tough challenge this year, losing five important seniors, three of them starters, from last year's team which was 25-6 overall. The team took second in the GLVC at 17-3, and second in the NCAA II Great Lakes Regional. Gone from last season are first team All-GLVC guard Brandun Hughes, who led the team in assists and was second on the team in scoring, and second team All-GLVC center Habib Ademi, who was second on the team in scoring and rebounding.

To ease the loss of the five seniors that accounted for nearly 50 percent (44 points a contest) of the Eagles scoring in 1999-2000, Pearl will look to three seniors to lead an athletic roster that appears two-deep at every position.

Seniors **Derrick Lyons** (Albany, Georgia), a guard, **Drake Roberts** (Nashville, Indiana), a guard, and **Kimion Green** (East St. Louis, Illinois), a forward/center, return for their final season in 2000-01.

Lyons, a *Street & Smith* Preseason All-American, led the Eagles with 14.5 ppg. The second team All-GLVC and All-Great Lakes Region guard became the most valuable offensive weapon in the final 10 contests of last season, averaging 15.6 ppg.

Green, a GLVC All-Tournament team member, was an intimidating force on the inside for the Eagles, leading the GLVC and ranked 18th nationally with 2.3 blocks a game. He also led the league with a 66.9 field goal percentage (113-169) while dropping in 9.2 ppg and grabbing 5.3 rebounds a game.

Roberts will compete to fill Hughes' shoes at the point. He averaged 2.8 points and 2.8 assists in 17 games as a junior transfer.

The Eagles have four letter winners returning to support the seniors.

In the backcourt as an understudy to Lyons is junior shooting guard **Matt Carter** (Cannelton, Indiana). Carter missed much of 1999-2000 with knee surgery, averaged 1.8 ppg in eight games.

New to the backcourt are a native of Arkansas and three residents from the tri-state. Transferring to USI as juniors are **Lajuan Christon** (Hot Springs, Arkansas), **Wes Attebury** (Evansville, Indiana), and **Cory Brunson** (Evansville, Indiana). Evansville Central High School point guard **Chavon Farmer** (Evansville, Indiana) joins the team as a freshman.

Christon, a strong, physical point guard who will challenge for the starting spot at the point, averaged 11.6 ppg and 6.4 assists as a sophomore at Three Rivers Community College. Attebury, who also could see time at the forward position, averaged 15.0 ppg on his way to being named the Great Rivers Athletic Conference Player of the Year at Olney Central College.

Brunson redshirted last season to get stronger and improve his all around game after transferring to USI from the University Missouri-Rolla, while Farmer was second team All-Metro last year, averaging 14.6 points and 5.9 assists at Central High School.

One of the most exciting freshman players in the GLVC a year ago will join Green in the frontcourt. Sophomore forward **Diondre Givens** (Mt. Vernon, Indiana), who started 14 contests, led the Screaming Eagles with 6.1 rebounds a contest and was fifth on the team with 9.5 ppg. Givens will have to pick up the void left by sophomore swingman **Billy Harris** (Carbondale, Indiana), who will be out for the year with a knee injury. Harris, an Academic All-GLVC performer, played much bigger than his 6'4" frame as a

freshman, averaging 8.6 ppg and 3.9 rpg off the bench.

The biggest additions to the team in 2000-01 may be in the Eagles frontcourt.

Junior forward/center **Shirica Shy** (Gordon, Georgia) will see his first action in an Eagles' uniform after red-shirting last season. Shy, who joined Lyons in transferring to USI, averaged 10.0 ppg and 13.8 rpg as a sophomore at Georgia Perimeter College and will give USI a strong physical presence on the inside.

New to the squad in 2000-01 is junior guard/forward **Marlowe Currie** (St. Louis, Missouri), who transferred to USI from Florissant Valley Community College, and junior center **Kevin Robinson** (Largo, Maryland), a transfer from Butler County Community College.

Currie, the Region XVI Player of the Year and the NJCAA Division II first team All-American, averaged 25.5 ppg, to rank fourth nationally, and 12.8 rpg, to rank third. He gives Pearl flexibility by having the offensive skills to be successful from the outside as well as in the paint.

At 6'10", Robinson is the biggest Eagle who fans may see contribute more and more as the season progresses. He averaged just under 10 points and over six rebounds a game in two seasons at BCCC.

With the number of new faces and starters missing from last year's squad, Pearl will have to have all the pistons firing early in 2000-01. The Eagles will open 2000-01 with an NAIA Final Four team, Huntington College on November 18, and an NCAA II final four team, Missouri Southern State College on November 25.

The Eagles will play archrival Kentucky Wesleyan College in a home-and-home series again this season. The Panthers, ranked second in the preseason magazines, only lost three games last season, two during in the regular season to USI.

## USI Head Coach Bruce Pearl



When it comes to winning, University of Southern Indiana men's basketball Head Coach Bruce Pearl does it better — and more often — than anyone else. During his eight years as head coach, Pearl's teams have a combined record of 205-42 (.830), making him one of the winningest active college basketball coach in America. His teams have won at least 22 games every season he's been a head coach, including a school-record 29 games in 1994-95.

On February 19, 2000, Pearl became the head coach to win 200 games in the quickest time, shattering the original NCAA mark held by Everett Case (North Carolina State, 1947-54), who reached 200 victories in 250 games. Pearl did it in 240 games.

In 1999-2000, the Eagles finished 25-6 overall, placed second in the Great Lakes Valley Conference Tournament and GLVC regular season, and advanced to the NCAA II Regional Finals (Sweet Sixteen) for the sixth time in the past eight seasons. His efforts were rewarded by being named NABC Great Lakes Regional Coach of the Year.

Pearl's Eagles have been to the NCAA II National Tournament for eight straight seasons, the longest such streak in Division II and the fourth longest ever in Division II. In addition, USI was ranked number one nationally at some point from 1994-99, also an NCAA Division II record.

During his tenure, Pearl — who at age 40 has proven to be one of the brightest young coaches in the nation — has coached two players named national Player of the Year, four players selected All-American, two players named GLVC Player of

## Pearl at USI

1992-93	22- 7	NCAA II Tournament Best turnaround in GLVC history
1993-94	28- 4	NCAA II National Runner-up GLVC Championship GLVC Coach of the Year
1994-95	29- 4	<b>NCAA II National Championship</b> NABC Great Lakes Region Coach of the Year NABC NCAA II National Coach of the Year Best season in school history Ranked number one nationally
1995-96	25- 4	GLVC Championship NCAA Regional Finalist Ranked number one nationally
1996-97	23- 5	GLVC Championship NCAA II Tournament Ranked number one nationally
1997-98	27- 6	Walt Disney Division II Tip-off Classic Championship NCAA II Great Lakes Regional Finalist Ranked number one nationally
1998-99	26-6	NCAA II Great Lakes Regional Finalist Ranked number one nationally
1999-2000	25-6	Great Lakes Regional Finalist NABC Great Lakes Region Coach of the Year
<b>8 Years</b>	<b>205-42</b>	<b>(.830)</b>

the Year, three players elected GLVC Newcomer of the Year, 10 players chosen first team All-GLVC, and 15 players named Academic All-GLVC.

In 1994-95, Pearl was named the NABC National Coach of the Year after leading the Screaming Eagles to the University's first NCAA Division II National Championship. Pearl's Eagles also captured their second straight Great Lakes Regional championship, finished the regular season ranked fifth nationally, and had a 29-4 overall record.

In his first season as head coach, Pearl led USI to the biggest turnaround in GLVC history. He inherited a squad which finished the previous season with a 10-18 overall record, 4-14 GLVC. Under Pearl's tutelage, the Eagles completed the 1992-93 season with a 22-7 overall record and a 15-4 conference mark.

### QUICKEST TO 100 WINS

Ray Harper, Ky. Wesleyan	112 games
Jim Boheim, Syracuse	117 games
<b>Bruce Pearl, USI</b>	<b>118 games</b>
Everett Case, N. Carolina State	125 games
Roy Williams, Kansas	128 games

### QUICKEST TO 200 WINS IN EIGHT SEASONS

*(only three coaches have ever won 200 games in eight seasons or less)*

<b>Bruce Pearl, USI</b>	<b>240 games</b>
Everett Case, North Carolina State	250 games
Roy Williams, Kansas	252 games

### WINNINGEST ACTIVE COACHES

*(records current as of March 14, 2000, minimum of five years as head coach)*

Coach, Team	W-L	Pct.
<b>Bruce Pearl, USI</b>	<b>205-42</b>	<b>.830</b>
Danny Kaspar, Incarnate Word	219-52	.808
Jerry Tarkanian, Fresno State	733-179	.804
Dave Robbins, Virginia Union	537-132	.803
John Kreese, College of Charleston	517-127	.803
Bo Ryan, Wisconsin-Milwaukee	368-90	.803
Roy Williams, Kansas	328-81	.802

### MOST WINS AFTER EIGHT SEASONS

Coach, Team (Years)	W - L	Pct.
Everett Case, NC State (1947-54)	213-52	.804
Roy Williams, Kansas (1989-96)	213-56	.792
<b>Bruce Pearl, USI (1993-2000)</b>	<b>205-42</b>	<b>.830</b>
Jerry Tarkanian, Long Beach St. & UNLV (1969-76)	195-33	.855
Tubby Smith, Georgia & Kentucky (1992-99)	187-75	.714
Denny Crum, Louisville (1972-79)	186-52	.782





Pearl, who also serves as coordinator of athletics development at USI, has spurred unparalleled growth in scholarship contributions to the Varsity Club. This fan support has revived basketball enthusiasm at the PAC.

Prior to coming to USI, Pearl was an assistant coach at the University of Iowa, where he was responsible for implementing full-court pressure defensive tactics. He also was responsible for the performance of Iowa's inside players, particularly the offensive and defensive post players. Coach Pearl taught many current and former pro basketball players, including Brad Lohaus (ex-San Antonio Spur), Acie Earl (ex-Milwaukee Buck), B.J. Armstrong (Orlando Magic), Kevin Gamble (ex-Sacramento King), and Matt Bullard (Houston Rockets).

During Pearl's six-year stay at Iowa, the Hawkeyes received five tournament berths, one final eight appearance (1987), one final 16 appearance (1988), and placed eight players in the National Basketball Association. Pearl helped head coach Dr. Tom Davis to a 129-63 (.672) record. For his efforts, Pearl was recognized in 1988 as one of the top Division I assistants in the country by *Basketball Weekly*.

Upon leaving Iowa, Pearl ended 14 years as an assistant and right-hand man to Dr. Davis. Prior to joining Davis at Iowa, Pearl was Davis' assistant coach (1982-83) and an associate head coach (1983-86) at Stanford University. As an undergraduate, Pearl was Davis' administrative assistant at Boston College (1978-82).

Pearl received his bachelor's degree in business administration from Boston College in 1982, graduating *cum laude*.

Pearl and his wife Kim have two daughters, Jacqui and Leah, and two sons, Steven and Michael.

## What they say about **Coach Pearl**

“ I have known and competed against Bruce since he got his start in coaching at Stanford. He worked hard and learned from a very successful coach in Tom Davis. He has paid his dues, and now he is showing that he is truly one of the bright young coaches in the country. ”

— Lute Olson, University of Arizona Head Basketball Coach

“ From the time I met him he was able to get the most out of me as a player. He understood my personality and knew how to motivate me. He believed in me when others did not. He still stays in touch, offering his friendship and advice. ”

— Brad Lohaus, Former NBA Player

“ Southern Indiana is fortunate to have him as their head coach. At Iowa, he was a great coach, a great friend, and he made me feel like I was a part of his family. ”

— B.J. Armstrong of the Chicago Bulls

“ Pearly was always there for me. When I needed somebody to push me or when I just needed advice, he was the coach I went to see. After my playing days at Iowa were over, Pearly helped me reach my goal of playing in the NBA. ”

— Kevin Gamble, Former NBA Player

“ I wouldn't have made it to the NBA if it wasn't for him. He showed great patience with me, taught me to improve, and motivated me to do it. ”

— Acie Earl, Former NBA Player

## Associate Head Coach

### Rick Herdes



Rick Herdes starts his ninth season as Bruce Pearl's top assistant coach, and he is widely known as one of the best recruiters in Division II basketball. The Eagles successes since Herdes' arrival reflect his abilities.

In the previous eight seasons at USI, Herdes has helped direct the Eagles to a 205-42 overall record (.833), the 1995 NCAA II National Championship, finalist in the 1994 NCAA II National Championship game, three Great Lakes Valley Conference championships, eight consecutive NCAA II Tournament appearances, and eight straight 20-win seasons.

He is also director of the highly successful Southern Indiana summer basketball camps.

Herdes came to USI from Southern Illinois University at Edwardsville, where he was an assistant from 1986 to 1992. While at SIUE, Herdes helped Head Coach Larry Graham lead the Cougars to a 127-56 record and three NCAA tournament appearances. He was responsible for coordinating recruiting. He also was academic advisor to the basketball team and director of summer camps and fund-raising events.

In 1991 and 1992 at SIUE, he was the head coach for the Illinois Prairie State Games, Southern Open Men's Division. His 1992 team received the silver medal.

Prior to working at SIUE, Herdes was an assistant basketball coach and physical education instructor at Lawrenceville (Illinois) High School, where he worked for current Indiana University assistant coach Ron Felling. LHS was the Illinois Class A State Champion in 1982 and 1983 and had a 68-game winning streak. Herdes was inducted into the Illinois High School Athletic Association Hall of Fame in 1998.

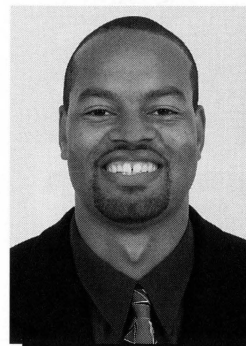
Herdes graduated from Graceland College in 1980 with a bachelor's degree in education. He is completing a master's in secondary education at USI.

As a player, Herdes led Lincoln Trail College to a ninth-place finish in the national tournament and helped lead Graceland to its first-ever appearance in the NAIA Tournament.

Herdes has two children, a daughter Taylor and a son Connor.

## Assistant Coach

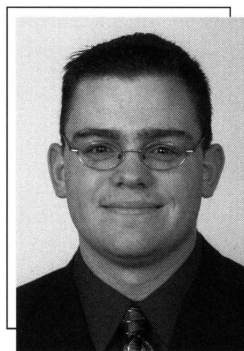
### Ken Johnson



Ken Johnson enters his second season as assistant coach for the Screaming Eagles. He is responsible for video breakdown and Coach Pearl relies heavily on Johnson for scouting opposing teams and individual player development.

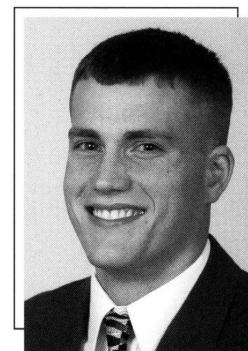
Johnson comes to USI from the Idaho Stampede, where he was a Continental Basketball Association assistant coach. Along with his coaching duties in the CBA, Johnson is the founder, director, and instructor of Hoopin' it Up One on One Training Camp, working with basketball players of all ages.

As a player, Johnson played basketball for two seasons at Albertson College of Idaho, where he also received a bachelor's degree in physical education. An NAIA District II All-Conference performer, he was a member of the ACI team which was the NAIA's District II Champion and played for the NAIA national championship in 1991.



## Manager

### Mark Hinkey

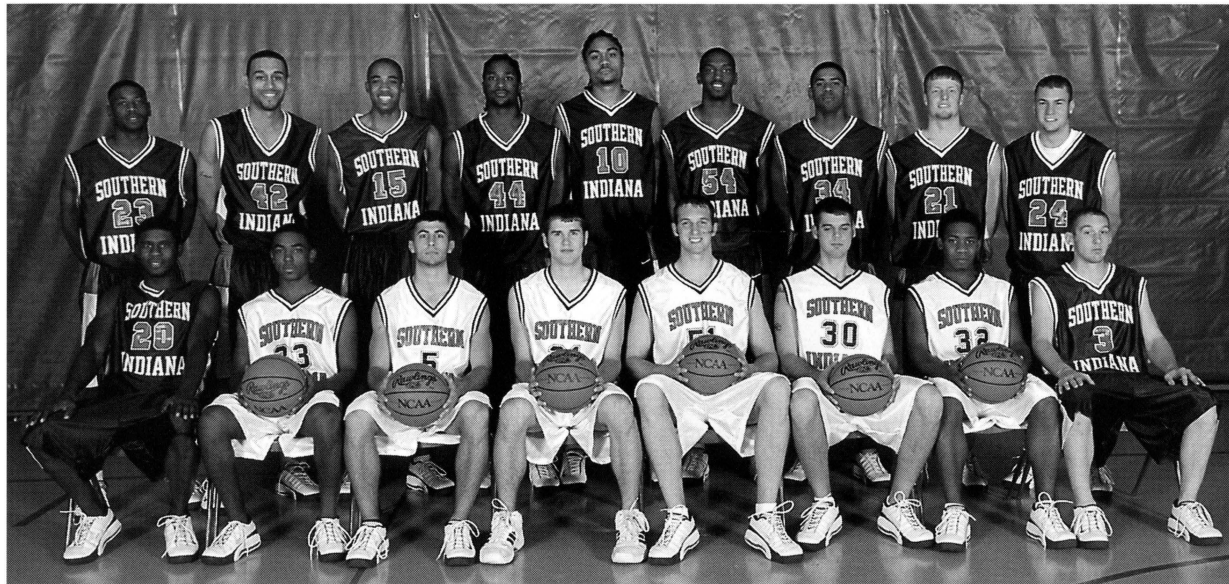


## Manager

### Josh Kain



# 2000/2001 SCREAMING EAGLES



**Back Row (L-R):** Derrick Lyons, Marlowe Currie, Diond're Givens, Shirica Shy, Kevin Robinson, Kimon Green, Billy Harris, Wes Attebury, Matt Carter.

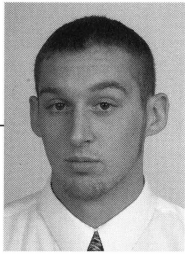
**Front Row (L-R):** LuJuan Christon, Mike Arnold, Cory Brunson, T.J. Zurliene, Travis Farmer, Kyle Howard, Chavon Farmer, Drake Roberts.

## 2000/2001 Roster

NO.	NAME	POS.	CL.	HT.	WT.	HOMETOWN (H.S./Previous School)	NO.	NAME	POS.	CL.	HT.	WT.	HOMETOWN (H.S./Previous School)
3	Drake Roberts	G	Sr.	6'1"	185	Nashville, IN (Brown County/Olney Central)	30	Kyle Howard	G/F	Fr.	6'4"	190	Mt. Vernon, IN (Mount Vernon)
5	Cory Brunson	G	Jr.	6'1"	190	Evansville, IN (Reitz/Missouri-Rolla)	32	Chavon Farmer	G	Fr.	5'10"	170	Evansville, IN (Central)
10	Kevin Robinson	C	Jr.	6'10"	230	Largo, Maryland (Largo/Butler CC)	33	Mike Arnold	G	Fr.	6'1"	170	Indianapolis, IN (Lawrence North)
15	Diond're Givens	F	So.	6'6"	205	Mt. Vernon, IN (Mt. Vernon)	34	Billy Harris	G/F	So.	6'4"	200	Carbondale, IL (Carbondale)
20	LaJuan Christon	G	Jr.	6'2"	185	Hot Springs, AR (Arkansas/Three Rivers CC)	42	Marlowe Currie	F	Jr.	6'7"	210	St. Louis, MO (Gateway Tech./Florissant CC)
21	Wes Attebury	G/F	Jr.	6'5"	190	Evansville, IN (Reitz/Olney Central College)	44	Shirica Shy	F/C	Jr.	6'7"	228	Gordon, GA (Wilkins Co./Georg. Perim.)
23	Derrick Lyons	G	Sr.	6'3"	209	Albany, GA (Dougherty Co./Georg. Perim.)	51	Travis Farmer	C	Fr.	6'8"	240	Wadesville, IN (North Posey)
24	Matt Carter	G	Jr.	6'2"	180	Cannelton, IN (Perry Central)	54	Kimon Green	F/C	Sr.	6'7"	227	East St. Louis, IL (Lincoln/Southeast College)

**HEAD COACH:** Bruce Pearl (9th season) **ASSOCIATE HEAD COACH:** Rick Herdes (9th season) **ASSISTANT COACH:** Ken Johnson (2nd season) **MANAGERS:** Mark Hinkey, Josh Kain

# Meet the 2000-2001 SCREAMING EAGLES



## Drake Roberts #3

6'1" 185 lb. Senior

Guard

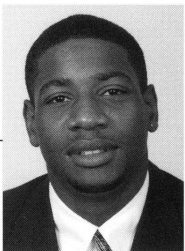
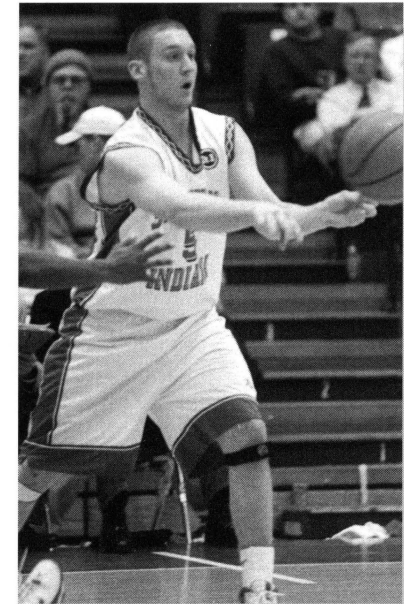
Nashville, Indiana

MAJOR: Elementary Education

**1999-00:** Played in 23 games in his first season with the Eagles, started five games...averaged 2.7 ppg and 2.1 assists...had a season-high nine points against Oakland City University and seven assists against Saint Joseph's College. **TRANSFER:** Transferred to USI from Olney Central Community College...averaged 9.3 ppg and 5.3 apg as the starting point guard for OCCC...had a season-high 22 points versus Southeastern Illinois for OCCC...transferred to OCCC from Division I Campbell University where he averaged 5.3 ppg, 3.0 assists, and 2.5 rpg as a freshman. **HIGH SCHOOL:** Named All-State by *Hoosier Basketball* as a senior at Brown County High School...named to the Top 15 All-State squad by *Bloomington Times-Herald*...averaged 27 points, 6.0 rpg, and 6.0 assists per game in his final season at BCHS. **PERSONAL:** Born July 27, 1979.

### Career Statistics

	G/GS	FGM/FGA	PCT.	3FGM/FGA	PCT.	FTM/FTA	PCT.	REB.	AVG.	AST.	STL.	BLK.	TP.	AVG.	MIN.
99-00	23/5	17/50	.340	6/16	.375	22/33	.667	21	1.8	48	22	3	62	2.7	243



## Derrick Lyons #23

6'3" 209 lb. Senior

Guard

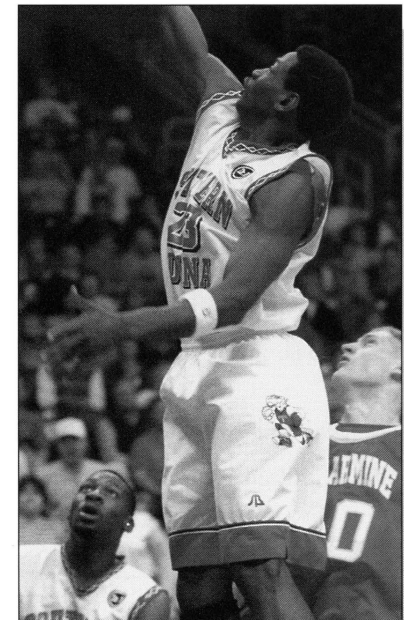
Albany, Georgia

MAJOR: Business

**1999-2000:** Named second team All-Great Lakes Region and All-GLVC in his first season with the Eagles...led the team in scoring with 14.5 ppg...shot over 50 percent from the field (189/375)...played in all 31 games as a junior, starting 30...had a season-high 25 points against Kentucky Wesleyan College in the GLVC Tournament...had a season-high nine rebounds against Central Washington University and six assists against Kentucky Wesleyan College at the PAC...named *Blue Ribbon Basketball* NCAA Division II Newcomer of the Year. **TRANSFER:** Transferred to USI from Georgia Perimeter College...named Naismith Junior College Player of the Year in 1999...also named second team NJCAA Division I All-American and the Region XVII Player of the Year...finished second in the nation in scoring and field goal percentage after averaging 27.8 ppg and shooting 70 percent from the field (253-361)...averaged 8.1 rebounds, 4.9 assists, and 4.5 steals as a sophomore at GPC. **HIGH SCHOOL:** Lettered in basketball and track at Dougherty High School in Albany, Georgia. **PERSONAL:** Born May 30, 1972.

### Career Statistics

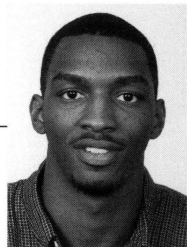
	G/GS	FGM/FGA	PCT.	3FGM/FGA	PCT.	FTM/FTA	PCT.	REB.	AVG.	AST.	STL.	BLK.	TP.	AVG.	MIN.
99-00	31/30	189/375	.504	21/70	.300	49/110	.445	100	3.2	80	64	9	448	14.5	671



SCREAMING EAGLES



# Meet the 2000-2001 **SCREAMING EAGLES**

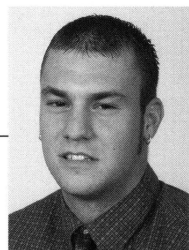


**Kimon Green #54**  
 6'7" 227 lb. Senior  
 Forward/Center  
 East St. Louis, Missouri  
 MAJOR: Education

**1999-2000:** Named to the GLVC All-Tournament team after turning 29 points, 13 rebounds, and six blocks in three games...led the GLVC and ranked 18<sup>th</sup> nationally with 2.3 blocks per contest...also led the GLVC by hitting 66.9 percent from the field (113/169)...averaged 9.2 ppg and was third on the team with 5.3 rpg. **1998-99:** Became a force in the middle for the Eagles in January and February after Leighton Nash went down with an injury...appeared in 32 games with 15 starts, averaging 9.6 ppg and 5.0 rpg... had a season-high 21 points against Saint Joseph's College...reached a season-high nine rebounds at the University of Missouri-St. Louis...second in the GLVC with 54 blocked shots, four coming against Northern Kentucky University and SIU Edwardsville. **TRANSFER:** Transferred to USI from Southeastern Community College in West Burlington, Iowa...averaged 10.7 ppg and 6.1 rpg in 30 games as a freshman... had 69 blocked shots in his first year as a collegiate player. **HIGH SCHOOL:** Earned letters in basketball, track, and football at East St. Louis (Illinois) Lincoln High School...averaged 19.0 ppg, 12.0 rpg, and 7.0 blocks as a senior...had a triple double against Madison High School, which included 15 blocks. **PERSONAL:** Born July 3, 1978.

### Career Statistics

	G/GS	FGM/FGA	PCT.	3FGM/FGA	PCT.	FTM/FTA	PCT.	REB.	AVG.	AST.	STL.	BLK.	TP.	AVG.	MIN.
98-99	32/15	117/205	.571	0/0	.000	73/109	.670	159	5.0	16	32	54	307	9.6	563
99-00	31/2	113/169	.669	0/0	.000	59/95	.621	165	5.3	27	40	72	285	9.2	606
TOT.	63/41	230/374	.615	0/0	.000	132/204	.647	324	5.1	43	72	126	592	9.4	—

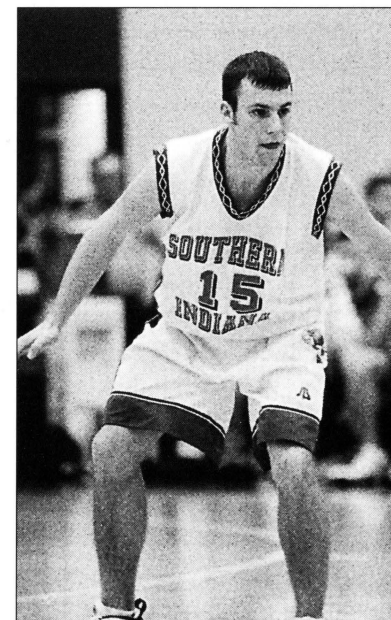


**Matt Carter #24**  
 6'2" 180 lb. Junior  
 Guard  
 Cannelton, Indiana  
 MAJOR: Elementary Education

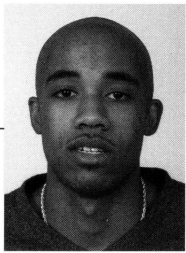
**1999-2000:** Saw limited action as a sophomore due to a knee injury...appeared in eight games, averaging 1.6 ppg... had a season-high six points at Saint Joseph's College. **1998-99:** Averaged 6.6 ppg in his first season with the Eagles...appeared in 27 games with two starts...had a season-high 15 points against Saint Joseph's College...sank five three-point field goals from beyond the arc against Oakland City University and Saint Joseph's...was third on the team in three-point field goal percentage, hitting 43.1 percent (44/102). **1997-98:** Redshirted. **HIGH SCHOOL:** Lettered in basketball at Perry Central High School in Leopold, Indiana...finished his career at PCHS as the school's and the county's all-time leading scorer with 1,797 points in four seasons...named Southwestern Indiana Player of the Year by the *Evansville Courier*, County Most Valuable Player, and All-Conference in 1996-97...also named first team All-State by the *Louisville Courier Journal* and second team All-State by the *Associated Press*...was honorable mention All-American in *Street and Smith's Basketball Yearbook* prior to his senior year...holds the Indiana all-time record for three-point field goals in a game with 14. **PERSONAL:** Born September 17, 1979.

### Career Statistics

	G/GS	FGM/FGA	PCT.	3FGM/FGA	PCT.	FTM/FTA	PCT.	REB.	AVG.	AST.	STL.	BLK.	TP.	AVG.	MIN.
97-98	REDSHIRTED														
98-99	27/2	57/130	.477	44/102	.431	21/27	.778	20	0.7	24	6	0	179	6.6	412
99-00	8/0	4/8	.500	3/7	.429	2/2	1.000	1	0.1	2	1	0	13	1.6	20
TOT.	35/2	61/138	.442	47/109	.431	23/29	.793	21	0.6	26	7	0	192	5.5	—



# Meet the 2000-2001 SCREAMING EAGLES

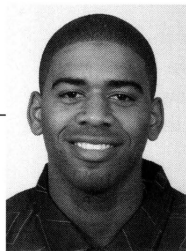
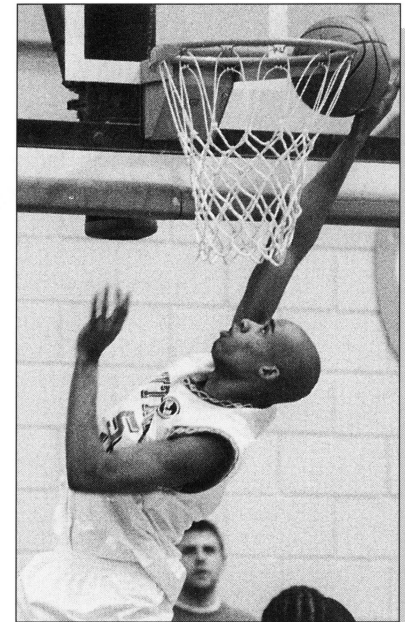


**Diond're Givens #15**  
 6'6" 205 lb. Sophomore  
 Forward  
 Mt. Vernon, Indiana  
 MAJOR: Communications

**1999-2000:** One of USI's most exciting freshman players, averaging 9.5 ppg and a team-leading 6.1 rpg... saw action in all 31 games, started 14...had a season-high 25 points against Lincoln University at the PAC and 12 rebounds at Northern Kentucky University...ranked third in the GLVC, hitting 65.2 percent from the field (131/201), and 13<sup>th</sup> in rebounding. **1998-99:** Redshirted. **HIGH SCHOOL:** Lettered three seasons at Mt. Vernon (Indiana) High School...averaged 21.4 ppg and 8.7 rpg as a senior...named first team All-Big Eight Conference three consecutive seasons, first team All-Sectional as a sophomore and junior, and *Hoosier Basketball Magazine* second team All-State as a senior. **PERSONAL:** Born January 24, 1980.

### Career Statistics

	G/GS	FGM/FGA	PCT.	3FGM/FGA	PCT.	FTM/FTA	PCT.	REB.	AVG.	AST	STL.	BLK.	TP.	AVG.	MIN.
99-00	31/14	131/201	.652	0/0	.000	32/63	.508	189	6.1	46	16	13	294	9.5	710

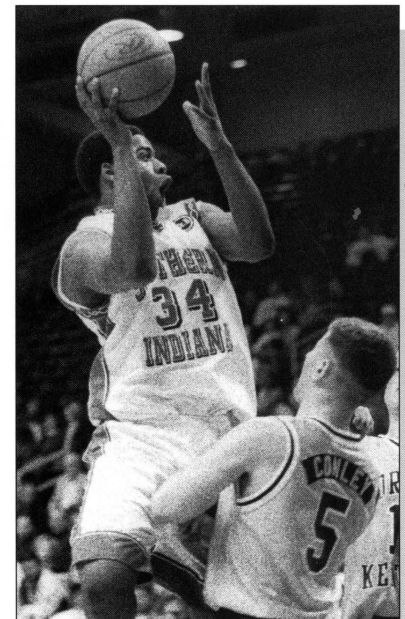


**Billy Harris #34**  
 6'4" 200 lb. Sophomore  
 Guard/Forward  
 Carbondale, Illinois  
 MAJOR: Business

**2000-01:** May miss season with knee surgery. **1999-2000:** Had an explosive impact on the Eagles as a freshman...saw action in 31 games and averaged 8.6 ppg and 3.9 rpg...shot 60.5 percent from the field (101/167)...had a season-high 20 points on the road against Indiana University/Purdue University Ft. Wayne and nine rebounds against Oakland City University and Central Washington University. **HIGH SCHOOL:** A second team All-State by the Illinois Basketball Coaches Association and third team All-State by *Associated Press* selection as a senior at Carbondale (Illinois) High School...named first team All-South Seven Conference and to the All-South team...averaged 21.7 ppg, 9.5 rpg, and 1.4 assists in 1998-99...shot 60 percent from (212/356) as a senior...honor student at CHS. **PERSONAL:** Born May 19, 1981.

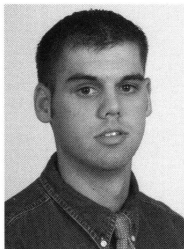
### Career Statistics

	G/GS	FGM/FGA	PCT.	3FGM/FGA	PCT.	FTM/FTA	PCT.	REB.	AVG.	AST	STL.	BLK.	TP.	AVG.	MIN.
99-00	31/2	101/167	.605	1/5	.200	63/96	.656	120	3.9	38	16	2	266	8.6	540





# Meet the 2000-2001 **NEWCOMERS**



## Kyle Howard #30

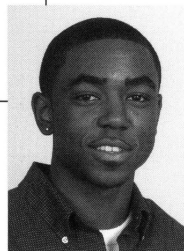
6'4" 190 lb. Freshman

Guard/Forward

Mt. Vernon, Indiana

MAJOR: Physical Education

1999-2000: Redshirted. **HIGH SCHOOL:** Lettered in basketball, baseball, golf, and cross country at Mt. Vernon High School... named honorable mention All-State and team Most Valuable Player as a senior...led the team in three-point field goal and free throw shooting. **PERSONAL:** Born May 10, 1981.



## Mike Arnold #33

6'1" 170 lb. Freshman

Guard

Indianapolis, Indiana

MAJOR: Secondary Education

1999-2000: Redshirted. **HIGH SCHOOL:** A member of the 1999 Lawrence North High School sectional championship team and 1998-99 Metropolitan Interscholastic Conference Champions... won four varsity basketball letters and one track and field letter at LNHS. **PERSONAL:** Born April 10, 1981.



## Shirica Shy #44

6'7" 228 lb. Junior

Forward/Center

Gordon, Georgia

MAJOR: Computer Inform. Systems

1999-2000: Redshirted. **TRANSFER:** Transferred to USI from Georgia Perimeter College... second in the NJCAA Division I in rebounding with 13.8 rpg...also averaged 10.0 ppg and ranked 12<sup>th</sup> nationally in field goal percentage, hitting 54 percent of his shots (97-179) as a sophomore...named to the 1999 Region XVII All-Tournament team. **HIGH SCHOOL:** Collected letters in basketball and football at Wilkins County High School...named team Most Valuable Player each of his four seasons at WCHS. **PERSONAL:** Born June 11, 1978.

# Meet the 2000-2001 **NEWCOMERS**



## Cory Brunson # 5

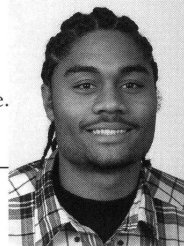
6'1" 190 lb. Junior

Guard

Evansville, Indiana

MAJOR: Physical Education

1999-2000: Redshirted. **TRANSFER:** Transferred to USI from the University of Missouri-Rolla...averaged 7.9 ppg and 1.9 assists as a sophomore...hit 43 three-point field goals...had a career-high 31 points against Montevallo University and six assists against Arkansas Baptist College...ended the 1998-99 season with four 20-point games the last month of the season. **HIGH SCHOOL:** Attended Reitz High School in Evansville...averaged 18.9 ppg, 2.1 rpg, and 3.8 assists...named second team All-State and first team All-Metro and All-Conference as a senior...scored 1,408 career points, ranking fifth among all-time prep scorers in Evansville. **PERSONAL:** Born September 9, 1978.



## Kevin Robinson #10

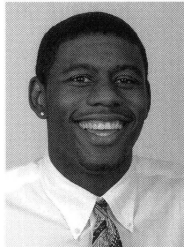
6'10" 230 lb. Junior

Center

Largo, Maryland

MAJOR: Art

**TRANSFER:** Transferred to USI from Butler County Community College where he played in 1997-98 and 1998-99...averaged 9.8 points and six rebounds as a freshman and 9.7 points and 6.3 rebounds as a sophomore...shot 45.5 percent from the field and 68.0 percent from the line in his career at BCCC...helped lead BCCC to 49 victories in two seasons (24-10 in 1997-98 and 25-7 in 1998-99). **HIGH SCHOOL:** Graduated from Largo High School where he participated in basketball. **PERSONAL:** Born May 14, 1979.



## LaJuan Christon #20

6'2" 185 lb. Junior

Guard

Hot Springs, Arkansas

MAJOR: Physical Education

**TRANSFER:** Selected USI over the University of Nebraska and Arkansas State University...played for two seasons at Three Rivers Community College in Poplar Bluff, Missouri...helped lead the Raiders to a 23-8 overall record, averaging 11.9 ppg, 6.4 assists, and 3.0 rpg...was an All-MCCAC selection as a sophomore...played under the legendary Gene Bess, who is 860-207 (.806) at TRCC. **HIGH SCHOOL:** Attended Arkansas Technical High School. **PERSONAL:** Born February 5, 1980.



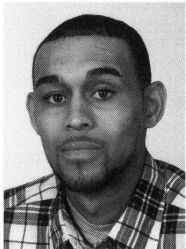
# Meet the 2000-2001 **NEWCOMERS**



**Wes Attebury #21**  
6'5" 190 lb. Junior  
Guard/Forward  
Evansville, Indiana  
MAJOR: Business Administration

**TRANSFER:** Transferred to USI after two seasons at Olney Central College in Olney, Illinois... named the Great Rivers Athletic Conference Player of the Year and first team All-GRAC in 1999-2000...averaged 15.0 ppg, 3.9 rpg, and 2.8 assists as a sophomore. **HIGH SCHOOL:** Graduated from Reitz High School in Evansville. **PERSONAL:** Born April 11, 1979.

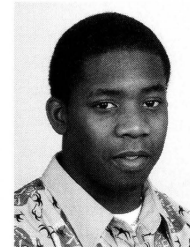
**HIGH SCHOOL:** Graduated from Central High School in Evansville...averaged 14.6 ppg, 4.0 rpg, and 5.9 assists per game as a senior...also boasted a five-to-one assist-to-turnover ratio in 1999-2000... named second team All-Metro by the *Evansville Courier & Press* and selected as a Hoosier Basketball All-Star. **PERSONAL:** Born November 6, 1981.



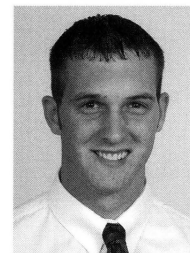
**Marlowe Currie #42**  
6'7" 210 lb. Junior  
Forward  
St. Louis, Missouri  
MAJOR: Sociology

**TRANSFER:** Came to USI after two seasons at Florissant Valley Community College in St. Louis, Missouri...led Florissant Valley to a 26-6 record in 1999-2000, averaging 25.5 ppg, 12.8 rpg, and 3.0 assists per game...ranked fourth in scoring and third in rebounding in the NJCAA Division II... named Missouri Collegiate Conference Player of the Year, Region 16 Player of the Year, and NJCAA Division II first team All-American. **HIGH SCHOOL:** Attended Gateway Technical High School. **PERSONAL:** Born June 10, 1978.

**1999-2000:** Attended USI, but did not play basketball. **HIGH SCHOOL:** Participated in basketball, baseball, cross country, football, and track at North Posey High School in Poseyville, Indiana...named All-County and All-PAC as senior...recognized as one of the top 40 big men in 1998. **PERSONAL:** Born June 9, 1981.



**Chavon Farmer #32**  
5'10" 170 lb. Freshman  
Guard  
Evansville, Indiana  
MAJOR: Computer  
Information Systems



**Travis Farmer #51**  
6'8" 240 lb. Freshman  
Center  
Wadesville, Indiana  
MAJOR: Speech Communications

SCREAMING EAGLES

# 2000-2001 Screaming Eagles **OPPONENTS**

*Saturday, Nov. 18: at the PAC*  
**HUNTINGTON COLLEGE**  
 Location: Huntington, IN  
 Enrollment:  
 Affiliation: NAIA Division II  
 (United Brethren in Christ)  
 Nickname: Foresters  
 Conference: Mid-Central Conference  
 Head Coach: Steve Platt  
 1999-00 Record: 34-5 (NAIA Tournament)

*Saturday, Nov. 25: at the PAC*  
**MISSOURI SOUTHERN STATE COLLEGE**  
 Location: Joplin, MO  
 Enrollment: 5,487  
 Affiliation: NCAA II  
 Nickname: Lions  
 Conference: MIAA  
 Head Coach: Robert Corn  
 1999-00 Record: 30-3 (NCAA Tournament)

*Tuesday, Dec. 5: at Arkadelphia, AR*  
**HENDERSON STATE UNIVERSITY**  
 Location: Arkadelphia, AR  
 Enrollment:  
 Affiliation: NCAA Division II  
 Conference: Gulf South  
 Nickname: Reddies  
 Head Coach: Rand Cappell  
 1999-00 Record: 23-10 (NCAA Tournament)

*Saturday, Dec. 16: at the PAC*  
**OAKLAND CITY UNIVERSITY**  
 Location: Oakland City, IN  
 Enrollment: 1,107  
 Nickname: Mighty Oaks  
 Affiliation: NCAAI  
 Conference: Independent  
 Head Coach: John Hayes  
 1999-00 Record: 12-17

*Tuesday, Dec. 19: at the PAC*  
**ABILENE CHRISTIAN UNIVERSITY**  
 Location: Abilene, TX  
 Enrollment: 4,700  
 Nickname: Wildcats  
 Affiliation: NCAA II  
 Conference: Lone Star  
 Head Coach: Mike Martin  
 1999-00 Record: 12-14

*Friday, Dec. 29: at the PAC*  
**FERRIS STATE UNIVERSITY**  
 Location: Big Rapids, MI  
 Enrollment: 9,651  
 Affiliation: NCAA II  
 Conference: GLIAC  
 Nickname: Bulldogs  
 Conference: GLIAC  
 Head Coach: Edgar Wilson  
 1999-00 Record: 5-21

## Great Lakes Valley Conference

*Thursday, Jan. 25: at Louisville, KY*  
*Saturday, Feb. 24: at the PAC*  
**BELLARMINE UNIVERSITY**  
 Location: Louisville, KY  
 Enrollment: 2,300  
 Nickname: Knights  
 Head Coach: Charlie Just  
 1999-00 Record: 13-14  
 1999-00 GLVC Record/Finish: 8-12/T-6th  
 GLVC Tournament Finish: Lost in First Round

*Wednesday, Jan. 3: at Indianapolis, IN*  
**UNIVERSITY OF INDIANAPOLIS**  
 Location: Indianapolis, IN  
 Enrollment: 4,000  
 Nickname: Greyhounds  
 Head Coach: Todd Sturgeon  
 1999-00 Record: 18-10  
 1999-00 GLVC Record/Finish: 13-7/T-4th  
 GLVC Tournament Finish: Lost in Semifinals

*Thursday, Nov. 30: at Ft. Wayne, IN*  
*Saturday, Feb. 3: at the PAC*  
**INDIANA UNIVERSITY/  
 PURDUE UNIVERSITY AT FT. WAYNE**  
 Location: Ft. Wayne, IN  
 Enrollment: 11,500  
 Nickname: Mastodons  
 Head Coach: Doug Noll  
 1998-99 Record: 11-16  
 1998-99 GLVC Record/Finish: 8-12/t-6th  
 GLVC Tournament Finish: Lost in First Round

*Saturday, Jan. 27: at Owensboro*  
*Thursday, Feb. 22: at the PAC*  
**KENTUCKY WESLEYAN COLLEGE**  
 Location: Owensboro, KY  
 Enrollment: 800  
 Nickname: Panthers  
 Head Coach: Ray Harper  
 1999-00 Record: 31-3 (NCAA II Finalist)  
 1999-00 GLVC Record/Finish: 18-2/1st  
 GLVC Tournament Finish: Champions

*Thursday, Jan. 18: at the PAC*  
*Saturday, Feb. 17: at Romeoville, IL*  
**LEWIS UNIVERSITY**  
 Location: Romeoville, IL  
 Enrollment: 4,300  
 Nickname: Flyers  
 Head Coach: Jim Whitesell  
 1999-00 Record: 19-8  
 1999-00 GLVC Record/Finish: 13-7/T-4th  
 GLVC Tournament Finish: Lost in First Round

*Monday, Jan. 15: at St. Louis, MO*  
*Thursday, Feb. 8: at the PAC*  
**UNIVERSITY OF MISSOURI-ST. LOUIS**  
 Location: St. Louis, MO  
 Enrollment: 15,880  
 Nickname: Rivermen  
 Head Coach: Mark Bernsen  
 1999-00 Record: 12-15  
 1999-00 GLVC Record/Finish: 7-13/T-8th  
 GLVC Tournament Finish: Lost in First Round

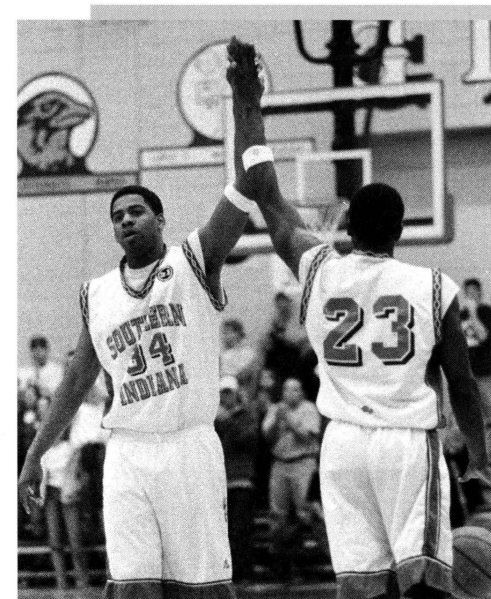
*Saturday, Jan. 6: at the PAC*  
**NORTHERN KENTUCKY UNIVERSITY**  
 Location: Highland Heights, KY  
 Enrollment: 11,600  
 Nickname: Norse  
 Head Coach: Ken Shields  
 1999-00 Record: 26-7 (NCAA Tournament)  
 1999-00 GLVC Record/Finish: 16-4/3rd  
 GLVC Tournament Finish: Lost in semifinals

*Thursday, Jan. 11: at Quincy, IL*  
*Saturday, Feb. 10: at the PAC*  
**QUINCY UNIVERSITY**  
 Location: Quincy, IL  
 Enrollment: 1,175  
 Nickname: Hawks  
 Head Coach: Steve Hawkins  
 1999-00 Record: 10-16  
 1998-99 GLVC Record/Finish: 7-13/T-8th

*Saturday, Dec. 2: at the PAC*  
*Thursday, Feb. 1: at Rensselaer, IN*  
**SAINT JOSEPH'S COLLEGE**  
 Location: Rensselaer, IN  
 Enrollment: 1,800  
 Nickname: Pumas  
 Head Coach: Dave Balza  
 1999-00 Record: 8-18  
 1999-00 GLVC Record/Finish: 4-16/T-11th

*Saturday, Dec. 19: at the PAC*  
*Tuesday, Feb. 13: at Edwardsville, IL*  
**SOUTHERN ILLINOIS UNIVERSITY EDWARDSVILLE**  
 Location: Edwardsville, IL  
 Enrollment: 11,000  
 Nickname: Cougars  
 Head Coach: Jack Margenthaler  
 1999-00 Record: 9-17  
 1999-00 GLVC Record/Finish: 5-15/10th

*Saturday, Jan. 20: at the PAC*  
*Thursday, Feb. 15: at Kenosha, WI*  
**UNIVERSITY OF WISCONSIN-PARKSIDE**  
 Location: Kenosha, WI  
 Enrollment: 5,000  
 Nickname: Rangers  
 Head Coach: Jeff Rutter  
 1999-00 Record: 8-18  
 1999-00 GLVC Record/Finish: 4-16/11th





# 1999-2000 STATISTICS & RESULTS

SCREAMING EAGLES

Player	GP-GS	MIN-AVG	TOTAL		3 POINT		FT-FTA	PCT	REBOUNDS				PF	FO	A	TO	BLK	STL	PTS	AVG
			FG-FGA	PCT	3FG-FGA	PCT			OFF	DEF	TOT	AVG								
23 Derrick Lyons	30-29	649 21.6	183-364	.503	18-65	.277	47-108	.435	59	38	97	3.2	103	8	78	74	9	63	431	14.4
3 Habib Ademi	26-20	680 26.2	117-222	.527	13-36	.361	119-143	.832	40	115	155	6.0	71	3	29	59	15	28	366	14.1
11 Brandun Hughes	29-23	735 25.3	140-322	.435	44-128	.344	60-89	.674	8	45	53	1.8	54	0	132	61	1	40	384	13.2
33 Ryan Kelley	0-29	727 24.2	98-223	.439	51-131	.389	61-80	.762	16	72	88	2.9	58	1	66	52	1	19	308	10.3
15 Diond're Givens	30-14	689 23.0	128-195	.656	0-0	.000	32-63	.508	57	128	185	6.2	45	1	44	38	13	16	288	9.6
54 Kimon Green	30-25	583 19.4	110-163	.675	0-0	.000	59-95	.621	56	106	162	5.4	95	7	27	55	70	38	279	9.3
34 Billy Harris	30-2	521 17.4	99-164	.604	1-5	.200	63-94	.670	55	62	117	3.9	55	2	36	48	2	16	262	8.7
22 Josh Kain	30-1	543 18.1	38-90	.422	32-78	.410	19-25	.760	20	28	48	1.6	37	0	42	14	1	19	127	4.2
5 Drake Roberts	22-5	242 11.0	16-49	.327	5-15	.333	22-33	.667	0	21	21	1.0	22	0	48	31	3	22	59	2.7
31 Rod Berry	24-0	233 9.7	21-51	.412	13-32	.406	7-11	.636	10	45	55	2.3	18	0	16	14	2	5	62	2.6
13 Henderson, LaKeith	14-0	127 9.1	14-37	.378	3-16	.188	3-7	.429	15	23	38	2.7	15	0	9	11	2	5	34	2.4
32 Kevin Herdes	27-2	308 11.4	21-51	.412	14-38	.368	7-12	.583	6	28	34	1.3	38	0	65	25	1	18	63	2.3
14 Carter, Matt	8-0	20 2.5	4-8	.500	3-7	.429	2-2	1.000	0	1	1	0.1	0	0	2	3	0	1	13	1.6
10 Stackhouse, Kent	3-0	12 4.0	1-3	.333	1-2	.500	1-2	.500	1	0	1	0.3	0	0	1	1	0	0	4	1.3
12 Elliott, Brad	4-0	6 1.5	0-1	.000	0-1	.000	0-0	.000	0	1	1	0.2	0	0	0	0	0	0	0	0.0
4 Luse, Dan	6-0	25 4.2	0-3	.000	0-0	.000	0-0	.000	3	3	6	1.0	1	0	0	4	0	2	0	0.0
Team Rebounds										54	58	112	3.7			2				
Southern Indiana	30	6100	990-1946	.509	198-554	.357	502-764	.657	400	774	1174	39.1	612	22	595	492	120	292	2680	89.3
Opponents	30	6100	824-1884	.437	171-527	.324	491-708	.694	404	724	1128	37.6	659	-	481	578	67	242	2310	77.0

DATE	OPPONENT	W/L	SCORE	DATE	OPPONENT	W/L	SCORE
11/22/99	LEMOYNE-OWEN	W	89-80	*1/29/00	at INDIANAPOLIS	L	OT 77-80
*12/2/99	at INDIANA \ PURDUE FT. WAYNE	W	101-86	*2/3/00	SAINT JOSEPH'S	W	117-102
*12/04/99	at SAINT JOSEPH'S	W	106-84	*2/5/00	INDIANA \ PURDUE FT. WAYNE	W	102-93
12/8/99	OAKLAND CITY	W	97-81	*2/10/00	at WISCONSIN-PARKSIDE	W	61-52
*12/11/99	at SIU EDWARDSVILLE	W	84-81	*2/12/00	at LEWIS	L	66-75
12/18/99	vs ABILENE CHRISTIAN	W	89-64	*2/15/00	SIU EDWARDSVILLE	W	86-62
12/19/99	vs CENTRAL WASHINGTON	L	78-93	*2/17/00	at #2 KENTUCKY WESLEYAN	W	81-78
12/30/99	FERRIS STATE	W	99-49	*2/19/00	at BELLARMINE	W	93-78
1/3/00	LINCOLN	W	117-59	*2/24/00	INDIANAPOLIS	W	84-80
*1/6/00	at MISSOURI-ST. LOUIS	W	96-69	*2/26/00	#19 NORTHERN KENTUCKY	W	75-60
*1/8/00	QUINCY	W	OT 96-93	3/2/00	vs BELLARMINE	W	87-81
*1/13/00	#17 LEWIS	W	94-82	3/3/00	vs NORTHERN KENTUCKY	W	100-89
*1/15/00	WISCONSIN-PARKSIDE	W	78-52	3/4/00	vs KENTUCKY WESLEYAN	L	88-90
*1/20/00	BELLARMINE	W	OT 84-73	3/11/00	vs MICHIGAN TECH	W	83-66
*1/22/00	#3 KENTUCKY WESLEYAN	W	OT 93-92	3/12/00	at KENTUCKY WESLEYAN	L	79-88
*1/27/00	at #10 NORTHERN KENTUCKY	L	79-87				

\*denotes conference game

# 1999-2000 FINAL GLVC RESULTS



## Great Lakes Valley Conference 1999-2000 FINAL Men's Basketball Standings www.siue.edu/ATHLETIC/glvchome.html

	W-L	Pct.	W-L	Pct.	Home	Away	Neut.	Streak
Kentucky Wesleyan	18-2	.900	31-3	.912	17-1	9-1	5-1	L-1
<b>Southern Indiana</b>	<b>17-3</b>	<b>.850</b>	<b>25-6</b>	<b>.806</b>	<b>14-1</b>	<b>8-4</b>	<b>2-1</b>	<b>L-1</b>
Northern Kentucky	16-4	.800	26-7	.788	14-0	7-4	4-2	L-1
Indianapolis	13-7	.650	18-10	.643	9-2	7-6	1-1	L-1
Lewis	13-7	.650	19-8	.704	12-2	7-5	0-0	L-1
Bellarmino	8-12	.400	13-14	.481	8-5	5-8	0-0	L-1
IUPUI Ft. Wayne	8-12	.400	11-16	.407	5-7	5-9	0-0	L-1
Missouri-St. Louis	7-13	.350	12-15	.462	9-6	3-8	0-0	L-7
Quincy	7-13	.350	10-16	.385	7-5	2-10	1-1	W-1
SIU Edwardsville	5-15	.250	9-17	.346	5-8	4-8	0-1	L-7
Saint Joseph's	4-16	.200	8-18	.308	7-7	1-11	0-0	W-2
Wisconsin-Parkside	4-16	.200	8-18	.308	4-9	4-9	0-0	L-2

## 1999-2000 All-GLVC Teams

### First Team

Player, School	Pos.	Ht.	Year	Hometown
LeRoy John, KWC	C	6-8	Sr.	Port of Spain, Trinidad
Tarrie Monroe, Lewis	F	6-7	Sr.	Rantoul, IL
Lorico Duncan, KWC	G	6-2	Jr.	Memphis, TN
Andy Foster, Indianapolis	G	6-4	Sr.	Frankfort, IN
<b>Brandun Hughes, USI</b>	<b>G</b>	<b>6-2</b>	<b>Sr.</b>	<b>Peoria, IL</b>
Steve Griffin, IPFW	G	6-3	Sr.	South Bend, IN

### Second Team

Derrick Lyons, USI	G/F	6-4	Jr.	Albany, GA
Habib Ademi, USI	F	6-9	Sr.	Krsko, Slovenia
Willie Robinson, UWP	C	6-8	Sr.	Chicago, IL
Albert Richardson, KWC	G	6-9	Sr.	New Orleans, LA
Jared McCurry, BU	G	6-3	So.	Elizabethtown, KY

### Honorable Mention

Craig Sanders, NKU; Craig Conley, NKU; Terence Herbert, UMSL; Chris Martin, Indianapolis; Kevin Listerman, NKU; Brad Bixler, Indianapolis; Brian Coffman, UWP; Romano Dees, Saint Joseph's; Jeremy Warner, Lewis; **Ryan Kelley, USI**

### Player-of-the-Year

LeRoy John, KWC

### Coach-of-the-Year

Ray Harper, KWC

### Freshman-of-the-Year

Brian McNeil, Quincy

## USI MEN'S BASKETBALL ALL-TIME RECORDS

### Career: Leading Scorers

1. Stephen Jackson (1983-87) ..... 2,216
2. Chris Bowles (1990-94) ..... 2,169
3. Stan Gouard (1993-96) ..... 1,619
4. Ilo Mutombo (1987-91) ..... 1,352
5. Ernie Brothers (1973-76) ..... 1,268
6. DeJuan Rowser (1974-77) ..... 1,226
7. Cully Nelson (1979-83) ..... 1,198
8. Cortez Collins (1975-79) ..... 1,140
9. John Brown (1978-82) ..... 1,105
10. Kelly Williams (1979-83) ..... 1,094
11. Craig Martin (1990-94) ..... 1,066
12. Robin Clark (1985-90) ..... 1,058
13. Dan Labhart (1976-80) ..... 1,041
14. Chad Gilbert (1994-96) ..... 1,011
15. Jeremy Pearson (1996-98) ..... 972
16. Ryan Kelley (1996-00) ..... 967
17. Scott Taylor (1992-96) ..... 967
18. Andre Jackson (1985-87) ..... 965
19. Tyrone Tate (1992-94) ..... 948
20. Dave Williamson (1970-74) ..... 948

### Career: Leading Rebounders

1. Chris Bowles (1990-94) ..... 1,129
2. Ilo Mutombo (1987-91) ..... 917
3. Cully Nelson (1979-83) ..... 790
4. Stan Gouard (1993-96) ..... 702
5. DeJuan Rowser (1974-77) ..... 691
6. Julian Hall III (1985-87) ..... 565
7. Cortez Collins (1975-79) ..... 564
8. John Brown (1978-82) ..... 540
9. Dennis Humphrey (1987-91) ..... 487
10. Bob Grannan (1970-74) ..... 485
11. John Hollinden (1979-81) ..... 485
12. Emanuel Rowser (1975-79) ..... 460
13. Terry Kirchoff (1972-76) ..... 457
14. Kelly Williams (1979-83) ..... 445
15. Randy Curl (1976-78) ..... 440
16. Chad Gilbert (1994-96) ..... 431
17. Joel Thomas (1995-99) ..... 412
18. Jim Crisp (1971-75) ..... 410

### Career: Leaders in Games Played

1. Ryan Kelley (1996-00) ..... 123
2. Marc Hostetter (1993-97) ..... 117
3. Craig Martin (1990-94) ..... 115
4. Chris Bowles (1990-94) ..... 114
5. Ilo Mutombo (1987-91) ..... 114

### Career: Most Field Goals Made

1. Stephen Jackson (1983-87) ..... 954
2. Chris Bowles (1990-94) ..... 901
3. Stan Gouard (1993-96) ..... 634
4. Ilo Mutombo (1987-91) ..... 537
5. Ernie Brothers (1973-76) ..... 527

### Career: Most Field Goals Attempted

1. Stephen Jackson (1983-87) ..... 1,930
2. Chris Bowles (1990-94) ..... 1,238
3. DeJuan Rowser (1974-77) ..... 1,134
4. Cortez Collins (1975-79) ..... 1,196
5. Ernie Brothers (1973-76) ..... 1,096

### Career: Most Free Throws Made

1. Chris Bowles (1990-94) ..... 333
2. Stan Gouard (1993-96) ..... 326
3. Wayne Houston (1996-98) ..... 298
4. Tyrone Tate (1992-94) ..... 287
5. Neil Coyle (1991-96) ..... 266

### Career: Most Free Throws Attempted

1. Chris Bowles (1990-94) ..... 520
2. Stan Gouard (1993-96) ..... 503
3. Wayne Houston (1996-98) ..... 420
4. DeJuan Rowser (1974-77) ..... 388
5. Tyrone Tate (1992-94) ..... 363

### Career: Most Three-point Goals Made

1. Robin Clark (1985-90) ..... 170
2. Ryan Kelley (1996-00) ..... 164
3. Craig Martin (1990-94) ..... 132
4. Jeremy Pearson (1996-98) ..... 124
5. John Schellenberg (1987-91) ..... 122

### Career: Most Three-point Field Goals Attempted

1. Ryan Kelley (1996-00) ..... 409
2. Robin Clark (1985-90) ..... 395
3. Craig Martin (1990-94) ..... 329
4. Jeremy Pearson (1996-98) ..... 323
5. John Schellenberg (1987-91) ..... 292

### Career: Most Assists

1. Marc Hostetter (1993-97) ..... 498
2. Tyrone Tate (1992-94) ..... 431
3. Kent Payne (1982-84) ..... 425
4. Jeff Embrey (1984-86) ..... 403
5. P.K. Falkenstein (1986-89) ..... 306

### Career: Most Steals

1. Stan Gouard (1993-96) ..... 175
2. Stephen Jackson (1983-87) ..... 168
3. Marc Hostetter (1993-97) ..... 153
4. Robin Clark (1985-90) ..... 130
5. Scott Taylor (1992-97) ..... 127

### Career: Most Blocks

1. John Hollinden (1979-81) ..... 365
2. Chris Bowles (1990-94) ..... 149
3. Ilo Mutombo (1987-91) ..... 128
4. Kimon Green (1998-Present) ..... 126
5. Julian Hall, III (1985-87) ..... 123

## GAME & SEASON RECORD BOOK

### INDIVIDUAL RECORDS

#### Most Points

- Game:** (45) Chris Bowles at Northern Kentucky, 1990-91  
**Season:** (623) Stan Gouard, 1994-95

#### Most Field Goals Made

- Game:** (19) Chris Bowles at Northern Kentucky, 1990-91  
**Season:** (256) Stephen Jackson, 1984-85

#### Most Field Goals Attempted

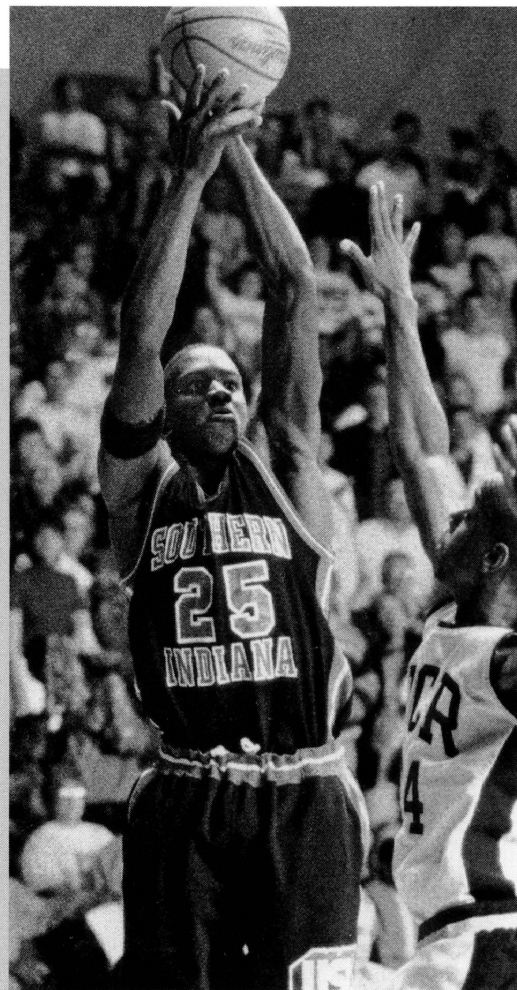
- Game:** (30) Stephen Jackson vs. St. Joseph's, 1983-84  
**Season:** (500) Stephen Jackson, 1983-84

#### Most Free Throws Made

- Game:** (20) Duron Hebron vs. Kentucky State, 1992-93  
**Season:** (147) Tyrone Tate, 1993-94  
**Consecutive Free Throws Made:** (33) Chad Gilbert, 1994-95

#### Most Free Throws Attempted

- Game:** (26) Duron Hebron vs. Kentucky State, 1992-93  
**Season:** (219) Stan Gouard, 1994-95





## Most Three-point Field Goals Made

**Game:** (8) Jeremy Pearson vs. Puerto Rico-Mayaquez, 11-18-97; Robin Clark vs. IPFW, 2-24-90

**Season:** (79) Robin Clark, 1989-90

## Most Three-point Field Goals Attempted

**Game:** (12) Stephen Jackson vs. Indianapolis, 1986-87 and vs. Ashland, 1986: 87

**Season:** (199) Cortez Barnes, 1994-95

## Best Three-point Field Goal Percentage

**Game:** (1.000, 5-5) Junior Bond vs. SIUE, 12-12-98; vs. Saint Joseph's, 1-14-99

**Season:** (.558, 29-52) Brian Huebner, 1993-94\*

**Career:** (.440, 114-259) Todd Jones, 1991-94  
\*Jones (.533, 56/105) won the NCAA II Three-Point Field Goal Percent Championship in 1993-94 because Huebner did not have enough attempts to qualify

## Best Field Goal Percentage

**Game:** (1.000, 8-8) Bobby Burns vs. Bellarmine, 1984-85

(1.000, 6-6) Tim Tooley vs. Oakland, 11-21-97

(1.000, 6-6) Ryan Kelley vs. IPFW, 12-4-97

(1.000, 6-6) Leighton Nash vs. Kentucky Wesleyan, 2-27-99

**Season:** (.678, 242-357) Stan Gouard, 1993-94

**Career:** (.616, 537/860) Ilo Mutombo, 1987-91

## Best Free Throw Percentage

**Game:** (1.000, 11-11) Stephen Jackson vs. Lewis, 1985-86

**Season:** (.882, 75-85) Ernie Brothers, 1975-76

**Career:** (.847, 116/137) John Schellenberg, 1987-91

## Most Rebounds

**Game:** (23) Ralph Schickel vs. Purdue North Central, 1974

**Season:** (303) Julian Hall III, 1985-86

## Highest Rebound Average

**Season:** (10.8) Julian Hall III, 1985-86

**Career:** (10.1) Julian Hall III, 1985-87

## Most Blocked Shots

**Game:** (17) John Hollinden vs. KWC, 1980-81

**Season:** (200) John Hollinden, 1980-81

## Most Steals

**Game:** (8) Stan Gouard vs. Bellarmine, Jan. 27, 1994

(8) Stan Gouard vs. Indianapolis, March 8, 1996

(8) Scott Boyden vs. Lewis, Feb. 24, 1995

**Season:** (66) Stan Gouard, 1994-95

## Highest Scoring Average

**Season:** (21.4) Stephen Jackson, 1984-85

**Career:** (19.6) Stephen Jackson, 1983-87

## Most Assists

**Game:** (17) Tyrone Tate vs. IPFW, Feb. 10, 1994

**Season:** (270) Tyrone Tate, 1993-94

## TEAM RECORDS

### Most Points

**Game:** (139) vs. Indiana Central (113), 1983

**Game/Both Teams:** (259, 134-125) vs. Northern State, 11-15-97

**Season:** (3,255) 1993-94

### Most Field Goals Made

**Game:** (57) vs. Indiana Central, 1983

**Season:** (1,171) 1993-94

### Most Field Goals Attempted

**Game:** (103) vs. St. Francis, 1975

**Season:** (2,244) 1994-95

### Most Free Throws Made

**Game:** (40) vs. St. Joseph's, January 11, 1997

**Season:** (745) 1994-95

### Most Free Throws Attempted

**Game:** (57) vs. Denver, December 19, 1996

**Season:** (1,043) 1994-95

## Most Three-point Field Goals Made

**Game:** (18) vs. Indiana/Purdue Ft. Wayne, February 15, 1997

**Season:** (250) 1998-99

## Most Three-point Field Goals Attempted

**Game:** (34) vs. Wisconsin-Parkside, January 4, 1997

**Season:** (627) 1998-99

## Best Field Goal Percentage

**Game:** (.770, 57-74) vs. Indiana Central, 1983

**Season:** (.547, 1,171-2,142) 1993-94\*  
\*Best in Nation

## Best Free Throw Percentage

**Game:** (.960, 24-25) vs. Campbellsville, 11-26-91

**Season:** (.751, 459-611) 1984-85

## Best Three-Point Field Goal Percentage

**Game:** (.778, 7-9) vs. Ashland, Jan. 13, 1994  
(.778, 7-9) vs. St. Joseph's, 1990

**Season:** (.437, 215-492) 1993-94

## Most Rebounds

**Game:** (84) vs. Marian, 1978

**Season:** (1,421) 1997-98

## Most Assists

**Game:** (35) vs. Lincoln, Jan. 3, 2000

**Season:** (651) 1993-94

## MISCELLANEOUS

**Widest Winning Margin:** (75) vs. Manchester (111-36), 1986-87

**Most 100-point Games:** (18) 1993-94

**Most Victories in One Season:** (29) 1994-95

**Longest Winning Streak:** (14) 1993-94  
(14) 1994-95

**Best Season Record:** (29-4, .879) 1994-95

**Most Wins in The GLVC:** (18) 1995-96

**Best GLVC Season Record:** (18-2, .900) 1997-98

**Highest Scoring Average:** (101.7) 1993-94

**Lowest Score in a Victory:** (46, 46-34) vs. Roanoke, 1978

**Lowest Opponent Score:** (34, 46-34) vs. Roanoke, 1978

## INDIVIDUAL HONORS

### All-Americans

Cortez Collins

- NABC District 4, 1979

- NABC All-American, 1979

John Hollinden

- NABC (Third Team) 1981

- *Basketball Weekly Magazine*, (Second Team) 1981

Cully Nelson

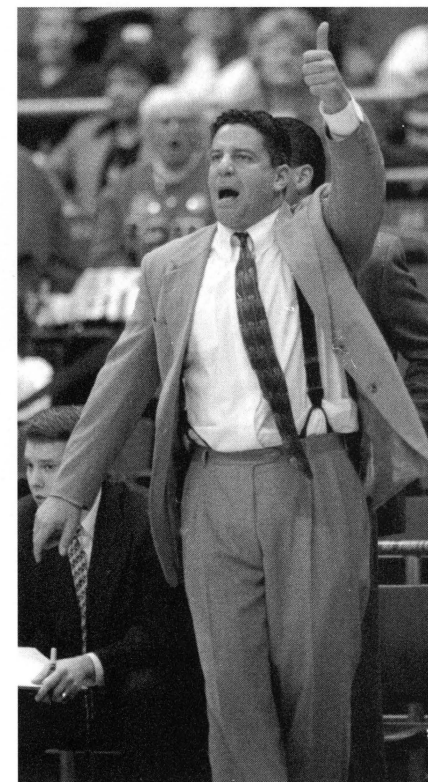
- NABC, Honorable Mention, 1983

- NABC, All-Great Lakes Region (First Team), 1983

Robin Clark

- Honorable Mention, 1990

- All-Great Lakes Region (Second Team), 1990



## All-Americans, continued

### Chris Johnson

- Honorable Mention, 1990
- All-Great Lakes Region (Second Team), 1990

### Chris Bowles

- *Division II Bulletin* NCAA Division II Player of the Year 1994
- *Division II Bulletin*, (First Team) 1994
- *Basketball Times* (First Team) 1994
- *USA Today/Don Hansen's Weekly Basketball Gazette*, 1994
- NABC (Third Team) 1994
- *Basketball Times* (Second Team) 1993
- NABC (Third Team) 1993
- Honorable Mention, *Division II Bulletin*, 1993
- Honorable Mention, 1992

- All-Great Lakes Region (First Team), 1991, 1992, 1993, 1994
- NCAA Great Lakes Regional All-Tournament, 1993, 1994
- NCAA Great Lakes Regional Most Outstanding Player, 1994
- GLVC Player of the Year, 1994
- GLVC Newcomer of the Year, 1991
- First team All-GLVC 1991, 1992, 1993, 1994

### Tyrone Tate

- *USA Today Weekly Basketball Gazette* (2nd Team) 1994
- *Division II Bulletin* (3rd Team) 1994
- NCAA II Elite Eight All-Tournament, 1994
- NCAA II Great Lakes Regional All-Tournament, 1994
- All-Great Lakes Region (First Team) 1994
- All-GLVC 1993 (Second Team), 1994 (First Team)
- GLVC Newcomer of the Year 1993

### Stan Gouard

- NABC Player of the Year and First Team All-American, 1995 & 1996
- *USA Today/Don Hansen's Weekly Basketball Gazette* (Honorable Mention) 1994
- *Division II Bulletin* (Honorable Mention) 1994
- NCAA II Elite Eight Most Outstanding Player, 1994
- NCAA II Great Lake Regional All-Tournament, 1994, 1995
- GLVC Newcomer of the Year, 1994
- All-GLVC 1994 (First Team), 1995 (First Team), 1996 (First Team)
- All-Great Lakes Region (Second Team) 1994, 1995 (First Team), 1996 First Team

### Chad Gilbert

- First Team All-American (*Basketball Times and College Sports*), 1996
- Second Team All-American (CoSIDA), 1996
- First Team All-Great Lakes Region (NABC), 1996
- GLVC Player of the Year, 1996
- All-GLVC, 1995 (Honorable Mention), 1996 (First Team)

- NCAA II Great Lakes Regional Most Outstanding Player, 1995
- NCAA II Elite Eight All-Tournament Team, 1995

### Jeremy Pearson

- Honorable mention All-American *Division II Bulletin*
- First Team All-GLVC, 1998
- Second Team All-GLVC, 1997
- Disney Division II Tip-Off Classic All-Tournament team

### Sertoma Charities All-Star Classic Participants

- DeJuan "Spider" Rowser, 1977
- Cortez Collins, 1979
- John Hollinden, 1981

### Eagles Who Entered the Pro Ranks

- Randy Curl (Class of '78)**
  - Helsinki, Finland (Europe), 1979-83
- Cortez Collins (Class of '79)**
  - Drafted by Chicago Bulls (NBA)
- John Hollinden (Class of '81)**
  - Drafted by Dallas Mavericks (NBA)
- Clarence James (Class of '83)**
  - Drafted by Detroit Spirits (CBA)
- Kelly Williams (Class of '83)**
  - Sweden (Europe), 1983
- Mike Wright (Class of '86)**
  - Adelaide (Australia)
- Julian Hall III (Class of '87)**
  - Club Corres (Mexico)
- Chris Bowles (Class of '94)**
  - Columbia (1999-Present)
- Cortez Barnes (Class of '95)**
  - Sweden (1998)
- Stan Gouard (Class of '96)**
  - Portland (USBL) (Drafted 3rd Round)
  - Sweden (Europe)
  - Idaho Stampede (CBA)
  - Columbia (1998-Present)
- Jeremy Pearson (Class of '98)**
  - South America
  - Australia
  - Israel

### NABC NCAA II Player of the Year

- Stan Gouard-1995, 1996

### NCAA Elite Eight All-Tournament Selections

- Tyrone Tate-1994
- Stan Gouard-1994
- Chad Gilbert-1995
- Brian Huebner-1995

### NCAA Elite Eight Most Outstanding Players

- Stan Gouard-1994

### CBS/Chevrolet Most Valuable Players

- Stan Gouard-1994
- Cortez Barnes-1995\*
- \*USI won NCAA II National Championship

### NCAA Great Lakes Regional All-Tournament Selections

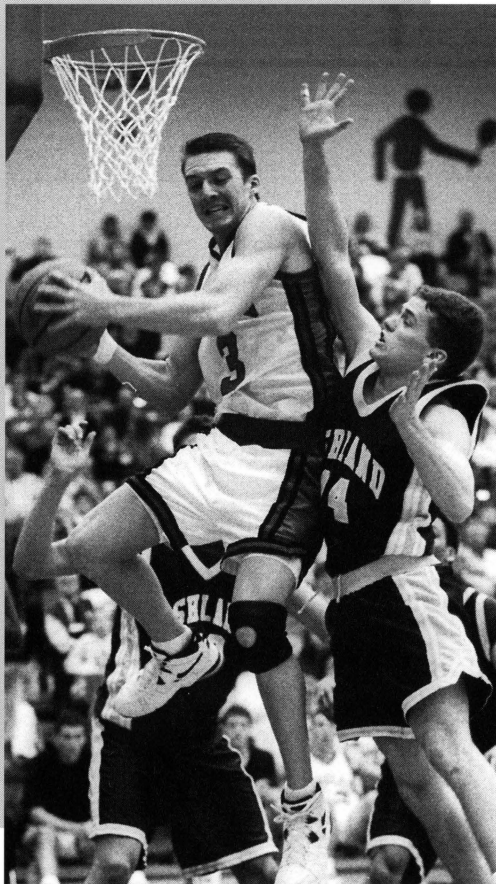
- Cortez Collins-1978
- John Hollinden-1980
- Dan Labhart-1980
- John Brown-1981
- Stephen Jackson-1985
- Jeff Embrey-1985
- Julian Hall III-1987
- Chris Bowles-1993, 1994
- Tyrone Tate-1994
- Stan Gouard-1994, 1995, 1996
- Chad Gilbert-1995
- Brian Huebner-1995
- Marc Hostetter-1997
- Brandun Hughes-2000
- Derrick Lyons-2000

### NCAA Great Lakes Regional Most Outstanding Players

- Chris Bowles-1994
- Chad Gilbert-1995

### All-Great Lakes Valley Conference Team

- Cortez Collins-1979 (First Team)
- John Hollinden-1980 (First Team), 1981 (First Team)
- John Brown-1980 (Second Team), 1981 (First Team)
- Cully Nelson-1982 (Second Team), 1983 (First Team)
- Stephen Jackson-1984 (First Team), 1985 (First Team), 1986 (First Team), 1987 (First Team)
- Julian Hall III-1987 (First Team)
- Robin Clark-1990 (Second Team)
- Chris Johnson-1990 (Second Team)



## All-Great Lakes Valley Conference Team, continued

Ilo Mutombo—1990 (Honorable Mention),  
1991 (Hon. Mention)  
John Schellenberg—1991 (Honorable Mention)  
Chris Bowles—1991 (First Team),  
1992 (First Team),  
1993 (First Team),  
1994 (First Team)  
Tyrone Tate—1993 (Second Team),  
1994 (First Team)  
Stan Goaurd—1994 (First Team),  
1995 (First Team),  
1996 (First Team)  
Chad Gilbert—1995 (Honorable Mention),  
1996 (First Team)  
Brian Huebner—1995 (Honorable Mention)  
Cortez Barnes—1995 (Honorable Mention)  
Marc Hostetter—1996 (Honorable Mention),  
1997 (Honorable Mention)  
Johnny Moore—1997 (First Team)  
Jeremy Pearson—1997 (Second Team),  
1998 (First Team)  
Scott Taylor—1997 (Honorable Mention)  
Wayne Houston—1998 (Second Team)  
Leighton Nash—1999 (First Team)  
Junior Bond—1999 (First Team)  
Brandun Hughes—2000 (First Team)  
Habib Ademi—2000 (Second Team)  
Derrick Lyons—2000 (Second Team)

## GLVC Player-of-the-Year

John Hollinden—1981  
Stephen Jackson—1985  
Chris Bowles—1994  
Chad Gilbert—1996

## GLVC Newcomer-of-the-Year

(\*changed to Freshman of the Year)  
Stephen Jackson—1983  
Jeff Embrey—1985  
Julian Hall III—1986  
Chris Bowles—1991  
Tyrone Tate—1993  
Stan Gouard—1994  
Cortez Barnes—1995

## GLVC All-Tournament Team

Leighton Nash—1999  
Kimon Green—2000  
Derrick Lyons—2000

## All-Great Lakes Region Team

Stephen Jackson—1985 (First Team),  
1986 (First Team),  
1987 (Second Team)  
Jeff Embrey—1985 (Second Team)  
Julian Hall III—1986 (First Team),  
1987 (First Team)  
Robin Clark—1990 (Second Team)  
Chris Johnson—1990 (Second Team)  
Chris Bowles—1991 (First Team),  
1992 (First Team),  
1993 (First Team),  
1994 (First Team)  
Tyrone Tate—1994 (First Team)  
Stan Gouard—1994 (Second Team),  
1995 (First Team)  
Chad Gilbert—1996 (First Team)  
Leighton Nash—1999 (Second Team)  
Brandun Hughes—2000 (Second Team *Daktronics*)  
Habib Ademi—2000 (Second Team *Daktronics*)  
Derrick Lyons—2000 (Second Team *Daktronics*)

## GLVC All-Academic Team

Dave Moran—1986-87  
P.K. Falkenstein—1987  
Antonio Reyes—1987  
Chris Schafer—1988  
Craig Martin—1992, 1993, 1994  
Chris Bowles—1993, 1994  
Todd Jones—1993  
Stu Sheets—1993  
Neil Coyle—1994, 1995, 1996  
Jeff Doyle—1994  
Scott Taylor—1994  
Marc Hostetter—1995, 1997  
Jason Dominick—1996  
Tim Tooley—1997, 1998, 1999  
**RYAN KELLEY—1998, 1999**  
**HABIB ADEMI—1999**  
**JOHN BUCHER—1999**  
**JOSH KAIN—1999**  
**KENT STACKHOUSE—1999**

## Coach-of-the-Year

Wayne Boultinghouse: GLVC, 1980, NABC  
District 4, 1981  
Mark Bial: GLVC, 1987  
**BRUCE PEARL: GLVC, 1993, 1994,**  
**NABC NCAA Division II**  
**Coach of the Year; 2000**  
**NABC NCAA II District**  
**Coach of the Year**

## TEAM HONORS

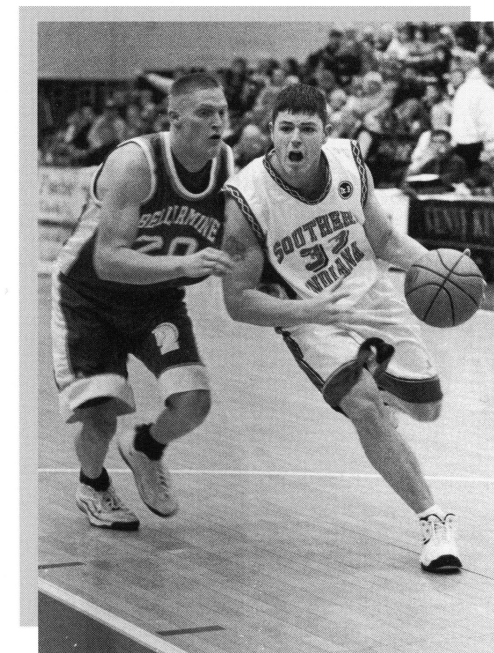
1978-NCAA Great Lakes Regional (Runner-up)  
1980-Nationally Ranked (10th NCAA poll)  
1980-GLVC Champions  
1980-NCAA Great Lakes Regional (4th place)  
1981-Nationally Ranked (4th place)  
1981-GLVC Champions  
1981-NCAA Great Lakes Regional (4th place)  
1982-Nationally Ranked (13th NCAA poll)  
1985-GLVC Tri-Championship  
1985-NCAA Great Lakes Regional (3rd place)  
1987-Nationally Ranked (12th NCAA poll)  
1987-GLVC Co-Champions  
1987-NCAA Great Lakes Regional (3rd place)  
1990-Nationally Ranked (12<sup>th</sup> NCAA poll)  
1990-NCAA South Central Regional (4th place)  
1990-Nationally Ranked 20th (pre-Season poll)  
1990-Nationally Ranked 18th  
*NCAA Basketball Preview Magazine*  
1993-Nationally Ranked 11th, Ranked 2nd  
Great Lakes Region  
1993-NCAA Great Lakes Regional (3rd place)  
**(HOSTED BY USI)**  
1993-Pre-Season Poll Ranked 5th NCAA  
*Basketball Preview*  
1994-Nationally Ranked 4th NCAA,  
Ranked 3rd *Don Hansen Basketball Gazette*  
1994-Great Lakes Valley Conference Champions  
1994-NCAA Great Lakes Regional (1st place)  
**(HOSTED BY USI)**  
1994-NCAA Division II Elite Eight  
(Springfield, Mass.) **(National Finalist)**

## 1995-Ranked NUMBER ONE Nationally

1995-NCAA Great Lakes Regionals (1<sup>st</sup> place)  
**1995-NCAA DIVISION II NATIONAL**  
**CHAMPIONS (LOUISVILLE, KY.)**  
1996-Great Lakes Valley Conference Champions  
1996-Finished ranked fourth nationally  
1996-NCAA Great Lakes Regional (2nd place)  
**(HOSTED BY USI)**  
1996-Ranked NUMBER ONE nationally  
1997-Great Lakes Valley Conference  
(Three-way tie)  
1997-NCAA II Great Lakes Regional berth

## All-Great Lakes Valley Conference Team

1997-Ranked NUMBER ONE  
in second poll of the season.  
1997-Disney Division II Tip-Off Classic  
Champion 1998-Ranked NUMBER ONE  
nationally  
1998-Second Place GLVC Tournament  
(@ Kentucky Wesleyan)  
1998-NCAA Great Lakes Regional (2nd place)  
1999-Ranked NUMBER ONE nationally  
for one week (ranked number one five  
straight years)  
1999-Second in GLVC Tournament  
(@ Roberts Stadium)  
1999-NCAA Great Lakes Region (2nd place)  
1999-500th USI victory vs. LeMoyné Owen  
(Nov. 22, 1999)  
2000-Ranked fifth nationally  
(six straight seasons in the top five)  
2000-GLVC Tournament (2nd)  
2000-NCAA II Tournament  
(8th straight season)  
2000-NCAA II Great Lakes Regional (2nd)  
2000-Ranked 4th nationally  
in *Preview Sports College Basketball*





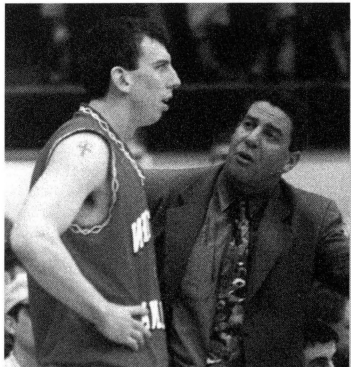
## ALL-TIME COACHING RECORDS

1970-71 ... 6-10	Jerry Altstadt (30-59)
1971-72 ... 4-20	Jerry Altstadt
1972-73 ... 8-15	Jerry Altstadt
1973-74 ... 12-14	Jerry Altstadt
1974-75 ... 6-19	Wayne Boultinghouse (111-79)
1975-76 ... 11-15	Wayne Boultinghouse
1976-77 ... 19-8	Wayne Boultinghouse
1977-78 ... 19-9	Wayne Boultinghouse
1978-79 ... 15-11	Wayne Boultinghouse
1979-80 ... 20-9	Wayne Boultinghouse
1980-81 ... 21-8	Wayne Boultinghouse
1981-82 ... 15-12	Creighton Burns (40-43)
1982-83 ... 15-13	Creighton Burns
1983-84 ... 10-18	Creighton Burns
1984-85 ... 18-11	Mark Coomes (18-11)
1985-86 ... 19-9	Mark Bial (56-30)
1986-87 ... 24-6	Mark Bial
1987-88 ... 13-15	Mark Bial
1988-89 ... 15-13	Lionel Sinn (64-50)
1989-90 ... 20-10	Lionel Sinn
1990-91 ... 19-9	Lionel Sinn
1991-92 ... 10-18	Lionel Sinn
1992-93 ... 22-7	Bruce Pearl (205-42)
1993-94 ... 28-4*	Bruce Pearl
1994-95 ... 29-4!	Bruce Pearl**
1995-96 ... 25-4	Bruce Pearl
1996-97 ... 23-5	Bruce Pearl
1997-98 ... 27-6	Bruce Pearl
1998-99 ... 26-6	Bruce Pearl
1999-00 ... 25-6	Bruce Pearl
<b>30 Years</b>	<b>524-314</b>

\*NCAA II National Finalist

\*\*NABC Coach of the Year

NCAA II NATIONAL CHAMPIONS



## 1970-99 ALL-TIME MEN'S BASKETBALL SERIES RECORDS

OPPONENTS	W	L	OPPONENTS	W	L	OPPONENTS	W	L
Abilene Christian	1	0	Indiana Wesleyan	1	0	St. Francis	4	1
Armstrong State	2	1	Johnson C. Smith	1	0	St. Mary's (Michigan)	1	0
Ashland	19	13	Kentucky State	15	3	Saint Joseph's (Indiana)	29	15
Assumption	1	0	Kentucky Wesleyan	24	35	St. Meinrad	2	0
Augusta	2	0	Lande	1	0	St. Xavier	1	0
Austin Peay	1	1	LeMoyn Owen	1	0	Siena Heights	1	0
Bellarmine	31	23	Lewis	23	17	South Dakota	2	0
Belmont	1	1	Lincoln	1	0	South Carolina-Spartanburg	1	0
Bethel (Tennessee)	1	1	Manchester	3	0	Southern Illinois	0	3
Brescia	1	0	Marian	2	1	SIU Edwardsville	32	15
Butler	0	3	Marion	3	1	Southern Mississippi	0	1
California Riverside	1	1	Mars Hill	1	0	Southeast Missouri	2	3
California St. Bakersfield	0	1	McKendree	1	6	Southwest Baptist	1	1
California St.			Mercer	0	1	Southwest Missouri	0	1
San Bernardino	1	0	Michigan Tech	1	0	Stonehill	1	0
Cameron	1	0	Milton	1	0	Tampa	1	0
Central Michigan	0	1	Minnesota-Duluth	1	0	Taylor	0	1
Central Missouri	0	1	Mississippi	0	1	Tennessee-Martin	3	5
Central Oklahoma	1	1	Missouri	0	2	Tennessee State	3	1
Central State	2	4	Missouri-Baptist	3	1	Tennessee Wesleyan	1	0
Central Washington	0	1	Missouri-Rolla	1	2	Tiffin	1	0
Charleston	1	0	Missouri-St. Louis	11	9	Thomas College	1	0
Columbus State	1	0	Missouri Southern	0	2	Thomas Moore	0	4
Cumberland	0	1	Morehouse	1	0	Transylvania	8	18
David Lipscomb	1	5	Morris Brown	1	0	Tri-State (Indiana)	1	0
Delta State	1	0	Mount St. Clare	1	0	Troy State	0	1
Eastern Illinois	2	1	New Hampshire	3	0	Truman State (NEMO)	1	0
Franklin	6	5	Norfolk State	1	0	Tusculum	1	0
Ferris State	3	0	North Alabama	1	0	Union	2	0
Florida Southern	0	2	North Central	2	0	Urbana	2	0
Florida Tech	1	0	Northeast Illinois	1	0	Virginia Union	0	1
Fontbonne	1	0	Northern Kentucky	30	12	Wake Forest	0	1
Furman	0	1	Northern Michigan	0	2	Washburn	1	0
Georgetown (D.C.)	0	1	Northwood Institute	1	4	Wayne State (Nebraska)	1	0
Grace	1	0	Oakland	2	0	Wayne State (Michigan)	2	0
Grand Canyon	1	0	Oakland City	28	10	West Georgia	1	2
Hanover	6	0	Oklahoma City	1	0	Western Illinois	1	2
Heidelberg	1	0	Olivet	2	0	Western Michigan	1	1
Hillsdale	2	0	Olivet Nazarene	2	0	West Texas State	0	1
UI-Chicago Circle	2	2	Oral Roberts	0	1	Winona State	1	0
Indianapolis	32	13	Pikeville	1	0	Wisconsin	1	0
Indiana Tech	2	0	Purdue-Calumet	5	1	Wisconsin-Parkside	11	4
Indiana-Kokomo	3	0	Puerto Rico-Mayaguez	2	0	Wisconsin-Platteville	1	0
Indiana/Purdue Ft. Wayne	25	12	Quincy	8	4	Wisconsin-Whitewater	0	1
Indiana/Purdue Indianapolis	12	4	Rio Grande	1	0	Wright State	1	5
Indiana Northwest	2	0	Roanoke	2	1	Wyoming	0	1
Indiana South Bend	2	0	Rose-Hulman	3	0			
Indiana Southeast	16	7	Saginaw Valley	2	0			

## PLATINUM SPONSORS

Evansville Courier & Press  
G.E. Plastics  
Integra Bank  
Master Tire & Accessories

Pepsi Cola General Bottlers  
Shyler's Bar-B-Q  
West Side Nut Club

## GOLD SPONSORS

Casino Aztar  
Deaconess Hospital  
Denny's Classic Diner  
Old National Bank  
in Evansville  
Schultheis Insurance Agency  
Tri-State Athletic Club

## BRONZE SPONSORS

Advantage Court & Fitness  
American General Finance  
Arby's  
Burger King  
Cameron Springs  
Cass Communications  
DiLegge's Restaurant  
D-Patrick Downtown Ford  
Elbrink Electric, Inc.  
Evansville Teachers Federal  
Credit Union  
Eye Mart  
Fischer Candy Co.  
Golden Corral  
Hacienda Mexican Restaurants  
Haynie Travel  
Kight Home Center  
MAI Technologies  
Mattress Factory Showroom  
Mead Johnson Nutritionals  
Mulzer Crushed Stone  
O'Charley's Restaurant  
& Lounge  
Rafferty's Restaurant  
Rally's Hamburgers  
G.D. Ritzy's  
Superior Concrete  
Tucker/Huber Realtors  
Turoni's Pizzeria & Brewery  
Wendy's Old Fashioned  
Hamburgers  
Zeidler Floral Co.

## VARSIITY CLUB ALL-AMERICAN EAGLES

ARC Construction  
Terry & Susan Babb  
William & Mary Jane Baechle  
Bruce & Carol Baker  
Ray & Cindy Bippus  
Bonnie Brill  
Ed & Holley Brundick  
Jack & Bert Burgdorf  
Steve & Terri Chancellor  
Bob & Pam Clayton  
Jerry & Mike Crawford  
David Deig  
Wayne & Patti Deig  
Ed & Gayle Derringer  
Gene & Genie Eades  
Craig & Peg Ehlen  
Vic & Dot Feix  
Dan & Sondra Felker  
Jim & Judy Fleck  
Jef & Neal Franklin  
Ed & June Frederking  
Vic & Pam Gallagher  
Patrick J. Goen  
John & Helen Hamilton  
Joe & Sandy Hatfield  
Dan & Kim Hermann

Ron & Theresa Herrenbruck  
Loren Herrli  
Mark & Joyce Hubbard  
Industrial Contractors, Inc.  
Ken & Dorothy Kaiser  
Rick & Jody Kissel  
Ralph & Judy Koressel  
Steven & Judi Kuric  
Mike & Debra Laster  
Aimee Luebben & Keith South  
Steve & Nancy McCullough  
Garey Patmore  
Bruce & Kim Pearl  
Jim & Jackie Pender  
Steve & Kim Pike  
Bernie Powers  
Rose Rexing  
Jay & Kate Rhodes  
Jack & Kate Siemers  
Earl & Ruth Smith  
Marvin & Joan Smith  
Larry & Kathy Vonderahe  
Paul & Eleanor Werner  
Jim & Eileen Will  
Jim & Karen Will  
John & Linda Willis  
Jeff & Laurie Wilmes  
Mark & Annette Wright  
Ray & Marilyn Wright

## SILVER SPONSORS

ABC/25 WEHT TV  
Dausmann Chrysler Plymouth  
Dodge Jeep Eagle  
Expressway Dodge  
Fairfield Inn  
Fifth Third Bank  
Grandy's Restaurant  
Gerteisen Electric  
Hilliard Lyons of Evansville  
Ideal American Dairy  
Kenny Kent Toyota  
Lexus Mitsubishi  
Lewis Bakeries  
Lindsey Lincoln-Mercury Isuzu  
Shoe Carnival  
United Leasing  
Working Distributors

# USI QUICK FACTS

## USI Screaming Eagles Quick Facts

**Location:** Evansville, Ind. (population 279,000)  
**Enrollment:** 9,012 (Fall 2000)  
**Conference:** Great Lakes Valley Conference  
**Affiliation:** NCAA II  
**Nickname:** Screaming Eagles  
**Colors:** Red, White, and Blue  
**Home Court:** Physical Activities Center (cap. 3,300)  
**Web site:** www.usi.edu

## USI Board of Trustees

James L. Will, Sr., Evansville ..... Chair  
 Bruce H. Baker, Boonville ..... Vice Chair  
 Tina M. Kern, Evansville ..... Vice Chair  
 Louise S. Bruce, Tell City ..... Secretary  
 G. Patrick Hoehn, Jeffersonville  
 Thomas F. McKenna, Carmel  
 Ryan Helzerman, Newburgh  
 Harolyn G. Torain, Indianapolis

## USI Officers

Dr. H. Ray Hoops, President  
 Dr. John W. Byrd, Vice President for Student Affairs  
 Dr. Robert L. Reid, Vice President for Academic Affairs  
 Richard W. Schmidt, Vice President for Business Affairs  
 Sherrienne M. Standley, Vice President for Advancement

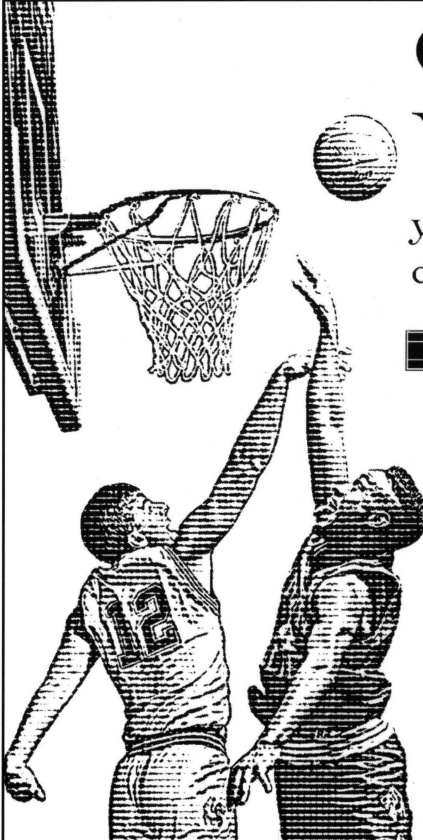

## USI Athletics

Steve Newton  
 Athletic Director .....812/464-1846  
**Jon Mark Hall**  
 Asst. Athletic Director/Men's Tennis Coach  
 NCAA Compliance Coordinator .....812/465-7164  
**Dr. Jack Marr**  
 Faculty Representative .....812/464-1814  
**Mike Goedde**  
 Baseball Coach .....812/464-1943  
**Bruce Pearl**  
 Men's Basketball Coach .....812/464-1908  
**Rick Herdes**  
 Assoc. Men's Basketball Coach .....812/465-1639  
**Ken Johnson**  
 Asst. Men's Basketball Coach .....812/465-1083

**Rick Stein**  
 Women's Basketball Coach .....812/465-7108  
**LeAnn Freeland**  
 Asst. Women's Basketball Coach .....812/464-1895  
**Randa Gatling**  
 Asst. Women's Basketball Coach .....812/465-1050  
**Mike Hillyard**  
 Cross Country Coach .....812/464-1846  
**Jim Brown**  
 Men's Golf Coach  
 and Athletic Academic Advisor .....812/464-1898  
**Don Bisesi**  
 Women's Golf Coach .....812/435-6075  
**Dan Hogan**  
 Men's Soccer Coach .....812/464-1946

**Bill Wilkins**  
 Women's Soccer Coach .....812/465-1041  
**Beth Watson**  
 Women's Softball Coach .....812/465-1664  
**Keely Porter**  
 Women's Tennis Coach .....812/465-1678  
**Katie Loyer**  
 Women's Volleyball Coach .....812/465-1789  
**Chris Johnston**  
 Head Athletic Trainer .....812/465-1298  
**Ray Simmons**  
 Sports Information Director  
 812/465-1622 • 812/475-0373-H • 812/465-7094-Fax

Ticket Information 812/465-7165

## Community

When the people of our community come together to support our teams, your friends at Old National are there to cheer them on.

**OLD NATIONAL BANK**  
*Your bank for life*  
MEMBER OLD NATIONAL BANCORP MEMBER FDIC



# BE A PART OF THE EXCITEMENT of the **PEPSI/GLVC** BASKETBALL TOURNAMENT

Presented by Kenny Kent Toyota & Old National Bank



## Basketball Tournament



February 28, March 1-3, 2001  
Roberts Stadium • Evansville, IN

### Sessions

Wed., Feb. 28	Session 1	Game 1	Women's Quarterfinals	12:00 pm
		Game 2	Women's Quarterfinals	2:30 pm
	Session 2	Game 3	Women's Quarterfinals	6:00 pm
		Game 4	Women's Quarterfinals	8:30 pm
Thurs., March 1	Session 3	Game 5	Men's Quarterfinals	12:00 pm
	Session 4	Game 6	Men's Quarterfinals	2:30 pm
		Game 7	Men's Quarterfinals	6:00 pm
		Game 8	Men's Quarterfinals	8:30 pm
Fri., March 2	Session 5	Game 9	Women's Semifinals	12:00 pm
	Session 6	Game 10	Women's Semifinals	2:30 pm
		Game 11	Men's Semifinals	6:00 pm
		Game 12	Men's Semifinals	8:30 pm
Sat., March 3	Session 7	Game 13	Women's Finals	5:00 pm
		Game 14	Men's Finals	8:00 pm



For More Details Call  
812-476-1383

or visit our web site at [www.siu.edu/ATHLETIC/glvchome.html](http://www.siu.edu/ATHLETIC/glvchome.html)



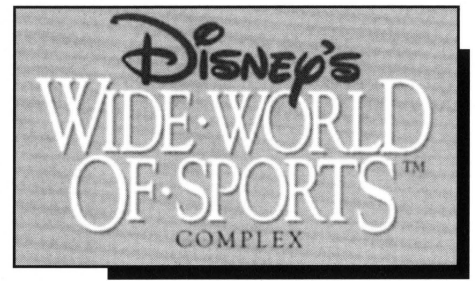
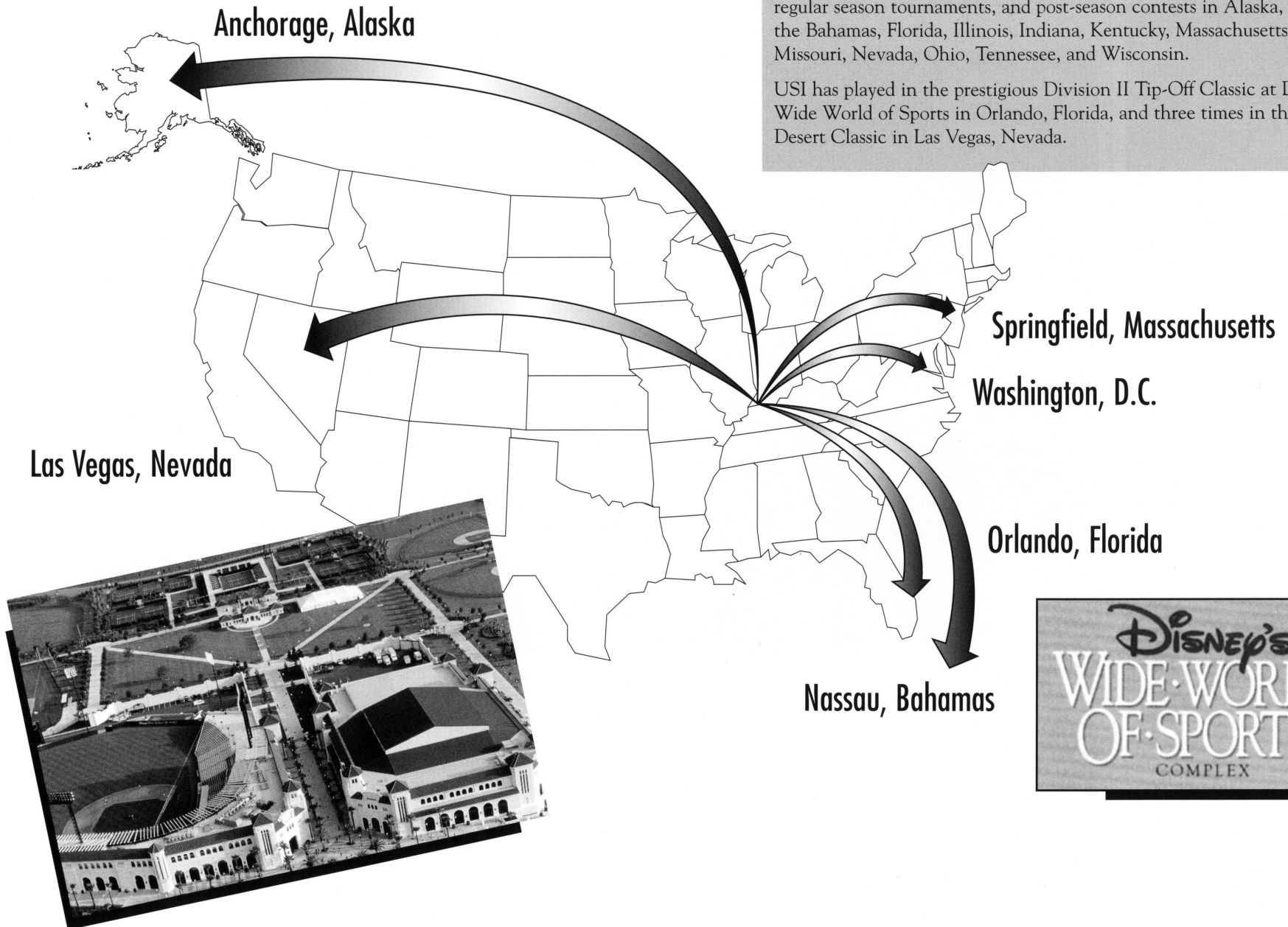
TOYOTA LEXUS Used Car SuperStore

5600 Division Street - Evansville, Indiana 47715  
(812) 473-5600 - 1-800-321-KENT - [www.kennykent.com](http://www.kennykent.com)

**Screaming Eagles fly around the USA**

The University of Southern Indiana men's basketball has traveled the continental United States and beyond since 1990. USI has played regular games, regular season tournaments, and post-season contests in Alaska, Arkansas, the Bahamas, Florida, Illinois, Indiana, Kentucky, Massachusetts, Maryland, Missouri, Nevada, Ohio, Tennessee, and Wisconsin.

USI has played in the prestigious Division II Tip-Off Classic at Disney's Wide World of Sports in Orlando, Florida, and three times in the High Desert Classic in Las Vegas, Nevada.



S  
C  
R  
E  
A  
M  
I  
N  
G  
E  
A  
G  
L  
E  
S

# GE People

*Family. Friends. Neighbors*

Committed to the  
continued prosperity  
and safety of  
our community  
and the  
environment



---

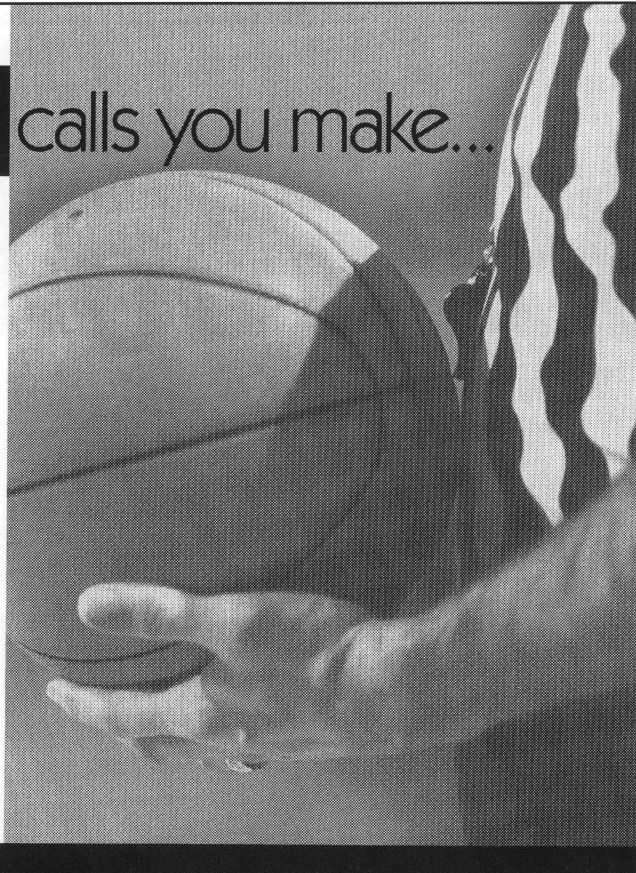
***GE Plastics***  
***Mt. Vernon, In.***





for the tough

calls you make...



 **Schultheis**  
INSURANCE  
for what matters most



# GE People

*Family. Friends. Neighbors*

Committed to the  
continued prosperity  
and safety of  
our community  
and the  
environment



---

**GE Plastics**  
**Mt. Vernon, In.**

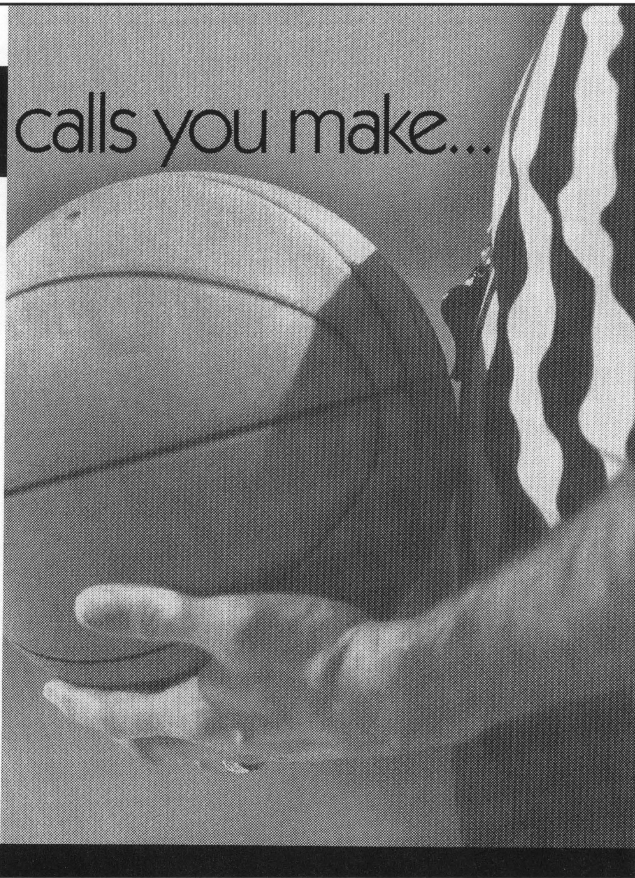


SCREAMING EAGLES



for the tough

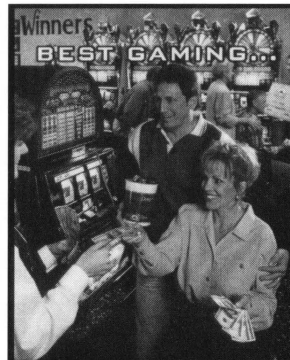
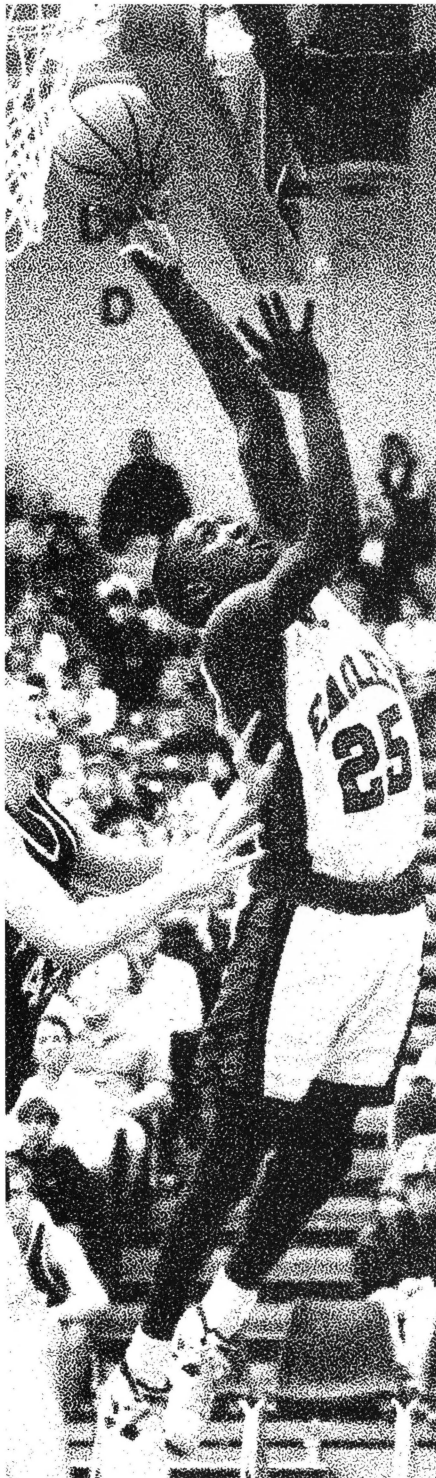
calls you make...



 **Schultheis**  
**INSURANCE**  
for what matters most







Winners...  
**BEST GAMING...**

Listen, life's too short to settle for anything less than the best. Which is why you should be playing at Casino Aztar. We've got the best of everything. And you can get it all right now. High-energy slots cranking out giant jackpots.



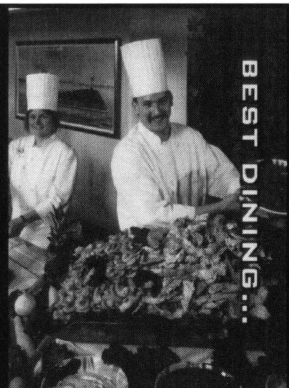
**1-800-DIAL FUN**

421 NW RIVERSIDE DRIVE  
EVANSVILLE, IN  
www.casinoaztar.com



**BEST SERVICE...**

Explosive table games action. A luxurious 250-room hotel. Five incredible restaurants offering a place for every taste. And FREE live headline entertainment all year long. Casino Aztar, we're the Best In The Midwest.. Just ask our players.



**BEST DINING...**

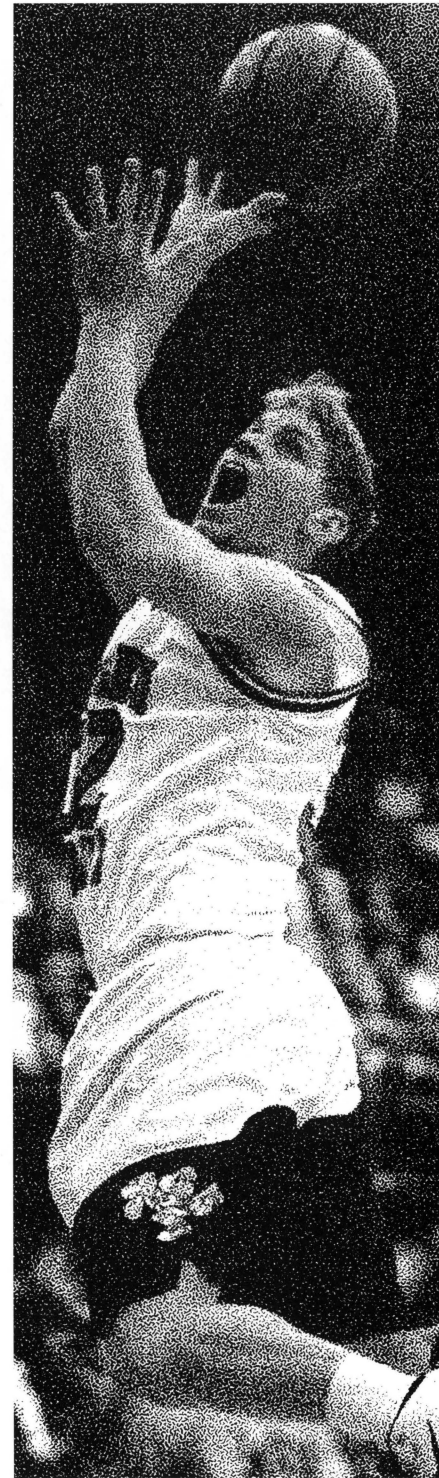


**BEST HOTEL...**

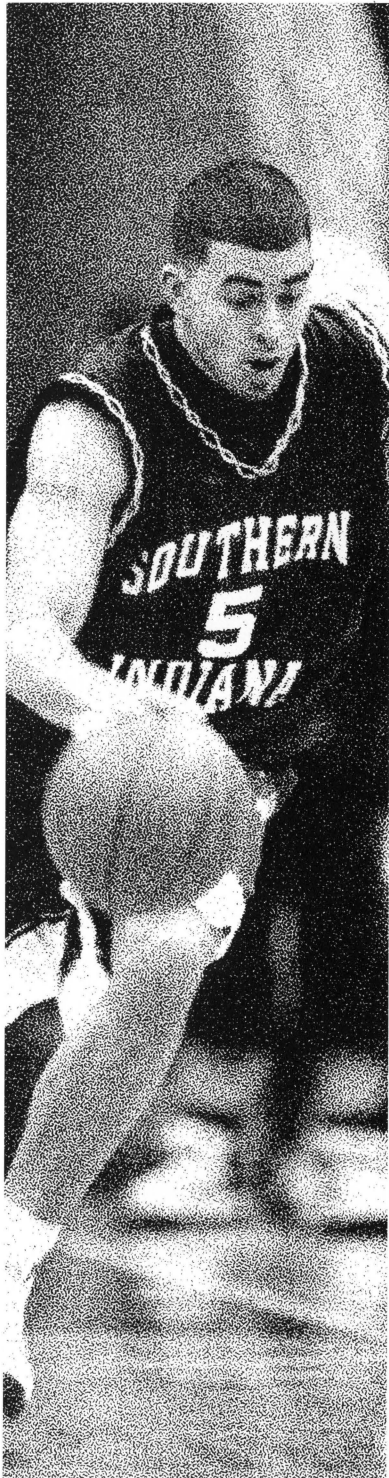
**www.deaconess.com**

**Your information link to Deaconess Hospital.**

Browse our Web pages to learn all that Deaconess has to offer. From our services to special events, you'll find it at [www.deaconess.com](http://www.deaconess.com).



SCREAMING EAGLES



**OPEN  
24 HOURS**

*The Food's always Finer  
at Denny's Classic Diner.™*

**No Time To Cook?**

**Grandy's®**

**BREAKFAST • LUNCH • DINNER**

**WE CATER: 1-800-274-5849**







# The Winning Game Plan!

For all your pre-game & post-game party plans, make the break to Shyler's Memphis Pit Bar-B-Q. Come on in for a delicious meal or carry-out a complete party for your entire crew.

## Shyler's Pick-Up Party

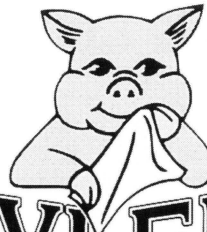
Everything you need for the perfect party. Enjoy tender pulled pork & two delicious side dishes, complete with bread, pickles, onions, paper supplies & utensils.

Approx.

# \$3.95

Per Person

Also, ask about Shyler's Complete Catering. We deliver & serve all-you-can-eat pulled pork & two sides for groups of 100-3,000 for approximately \$4.95 per person.



# SHYLER'S

MEMPHIS PIT BAR-B-Q

Green River Road, just south of Lloyd Expressway • 476-4599

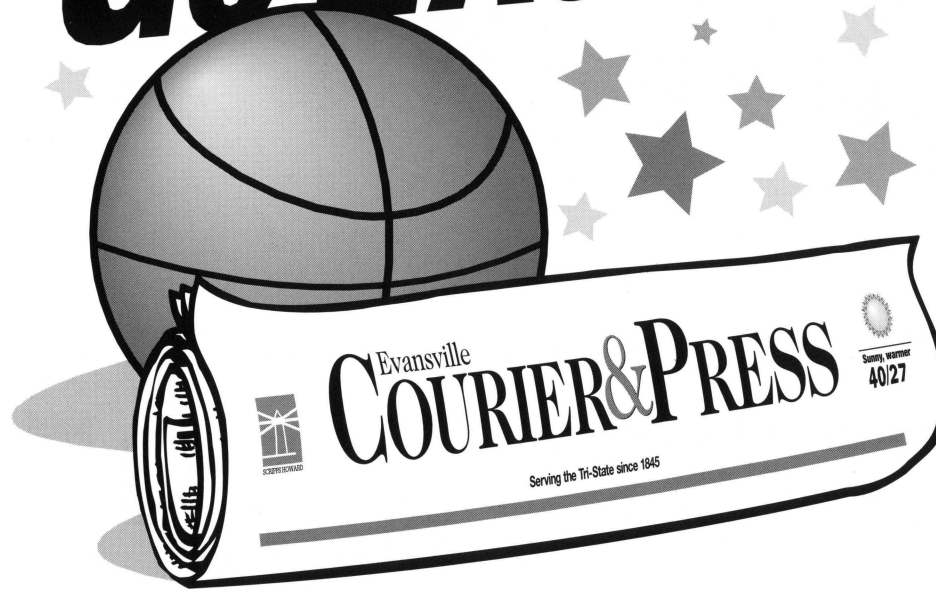


SCREAMING EAGLES





# GO EAGLES!



## Look for coverage of today's game in tomorrow's Courier & Press

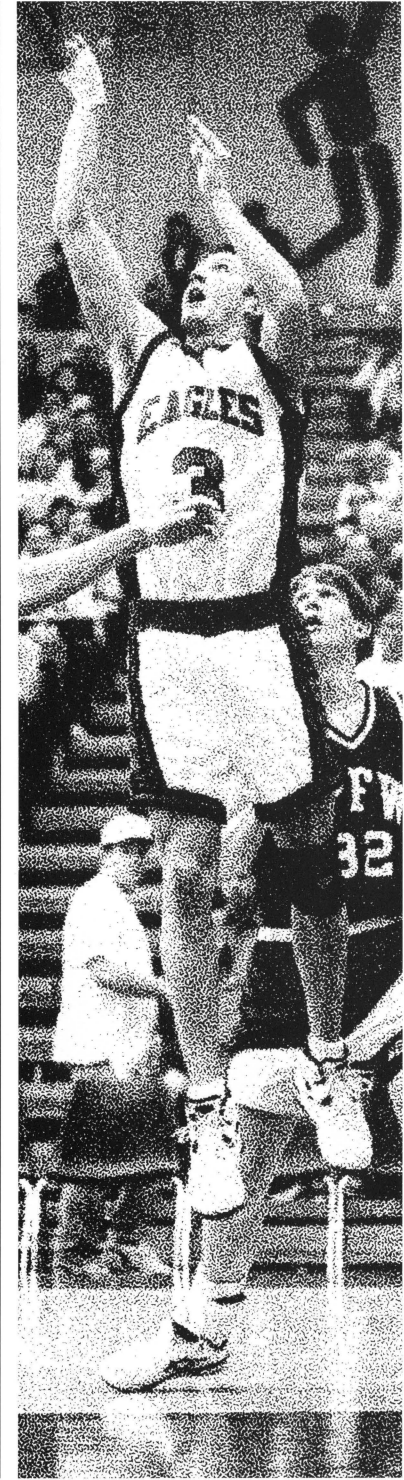
Each time the USI Eagles storm the court, the Evansville Courier & Press will be there to bring you every slam dunk, fast break and buzzer-beating 3 pointer.

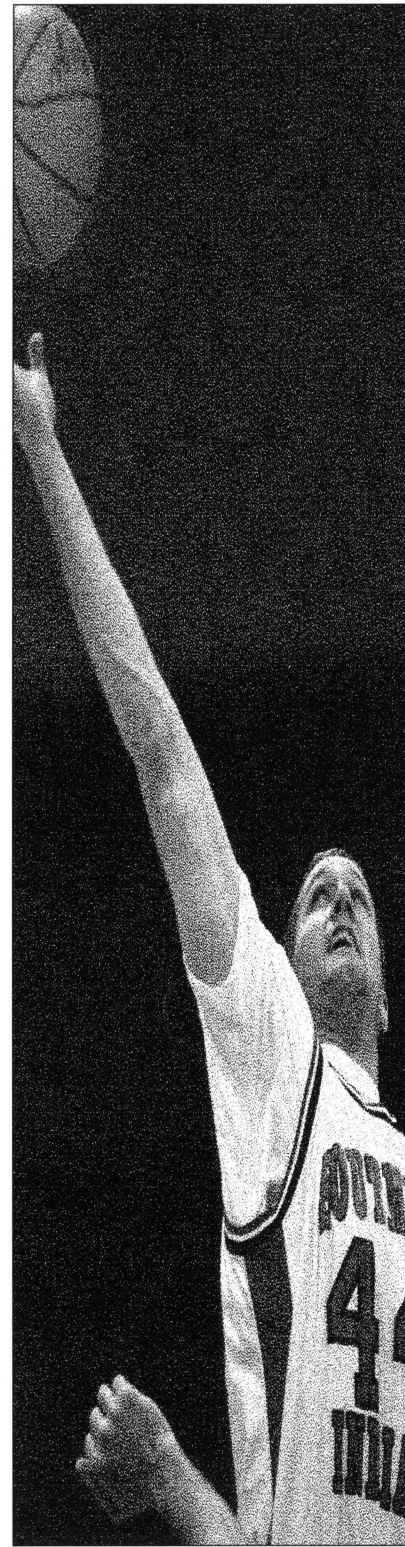
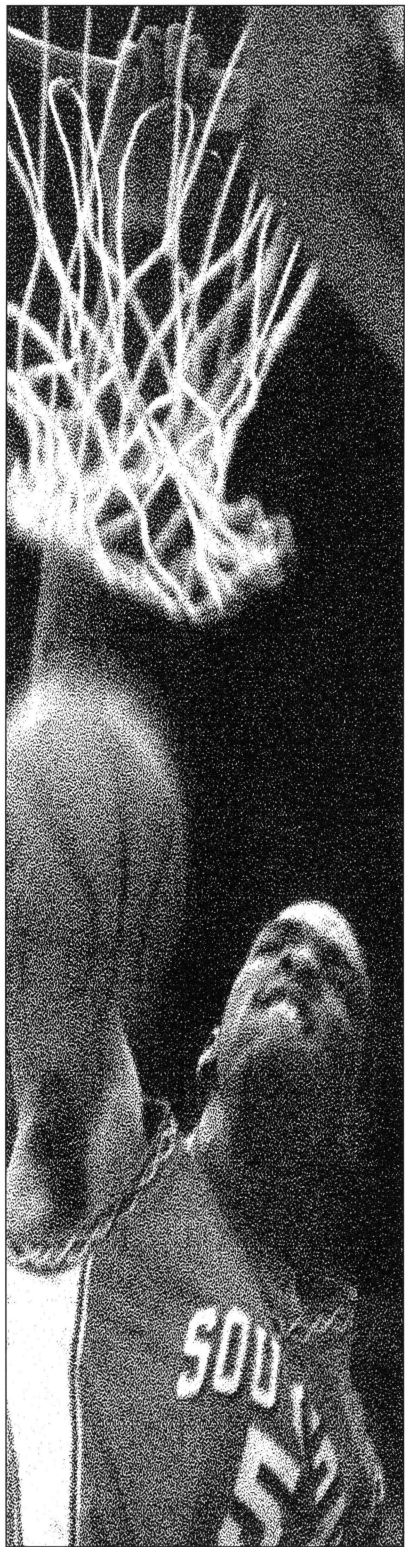
You'll find features on your favorite players, game

recaps and all the vital stats that basketball fans expect.

Whether it's sports, local and world news, weather or entertainment, the Evansville Courier & Press provides the news that touches you.

Evansville  
**COURIER & PRESS**





S  
C  
R  
E  
A  
M  
I  
N  
G  
E  
A  
G  
L  
E  
S



# 2000-2001 MEN'S BASKETBALL TEAM



University of Southern Indiana