

# Orr Appoints Independence Board of Incorporators

by Shannon Harper

Activities will soon commence for the nine appointees of the ISUE board of incorporators with their first meeting scheduled for 2 p.m., April 28 on the ISUE campus. Gov. Robert Orr will attend.

Orr recently disclosed his selections for the board, and according to John Whitaker, administrative assistant to the governor, they represent a "broad-based group of people" with a "cross section of all viewpoints."

Under the ISUE independence bill recently enacted into law, the incorporators will draft an independence plan for ISUE to be completed by Oct. 1, with revisions being made from Oct. to Dec. The plan will be presented to the 1985 legislature and its passage could result in independence for ISUE.

The board's chairman will be John Pruis, vice president of corporate affairs for Ball Corp. in Muncie, Ind. With 30 years in education, he served as president of Ball State University from 1968-78.

According to Whitaker, the main factor in Pruis' appointment was his experience in the higher education system which would enable him to better work with other universities.

Four board members who have voiced support for ISUE autonomy are:

Robert Fair, a Princeton, Ind., attorney and former state Senate president pro tem. He was sponsor of an unsuccessful independence bill in 1978.

Carolyn Georgette, commercial manager of Indiana Bell in Evansville.

Joseph O'Daniel, president of O'Daniel Ranes Oldsmobile Inc. in Evansville.

Rolland Eckels, a Mead Johnson executive and president of Southern Indiana Higher Education.

Eckels says it is his hope that the board can put "together a mission statement and plan for incorporation which will result in independence for this campus." He

Continued on page 8

## Empty Seats in New Student Senate

by Ken Harper

Contrary to earlier reports, the 1984-85 senate does not have a full membership. One upper division senate seat and the Allied Health seat are vacant. The vacancies occurred because only three candidates applied for the four upper division senate seats and no one applied for the Allied Health seat in the senate.

The new SGA president will be responsible for making appointments to fill the two vacancies. Students interested in applying for the empty senate seats must qualify under SGA constitutional requirements.

The 1984-85 student Senate will take office April 27th. The new Senate will be sworn in during the regular 8 am SGA meeting in UC 118.

The first major task facing the new Senate is selecting the SGA president. A senate selection committee will be formed to screen presidential candidates. The committee will provide the Senate with nominations for SGA president. The Senate will elect a nominee by a two-thirds vote of approval. The office of SGA president is open to all students qualified under the SGA Constitution.

Protests from students about this year's electoral process have died to a murmur. One official complaint, submitted to the Election Board by junior George Morgan, has been responded to by SGA officials. In a two-page document made available to the public, the Election Board defends the election format used this year.

Continued on page 8

## Freshmen SAT Scores Above National Average

by Blair Benford

Nationwide, Scholastic Aptitude Test (SAT) scores have been on a decline, but according to Admissions Director Tim Buecher ISUE's scores have been going up for the past nine years, yet these scores were still below the national level. Now, for the first time in ISUE's history, SAT scores were turned in only for students who had just graduated from high school, and the results were astounding.

Compared to the previous years scores, incoming freshmen improved by 78 points; they im-

proved to a point where they were 40 points over the average of all Indiana schools, including IU and Purdue, and they were 11 points over the national average.

Why has this happened? The major reason, said Admissions Director Buecher, is that almost all of the schools in the U.S.A. use the SAT scores for students who have just graduated high school. ISUE has been using SAT scores for all of their first-year students. This included all students who had enrolled for the first time, whether they had been out of school for a number of years or just out of high

school. According to Buecher, the longer a person is out of school the less validity the scores have, and of the approximately 700 students that enrolled at ISUE this past fall, 150-200 had been out of school a year or more.

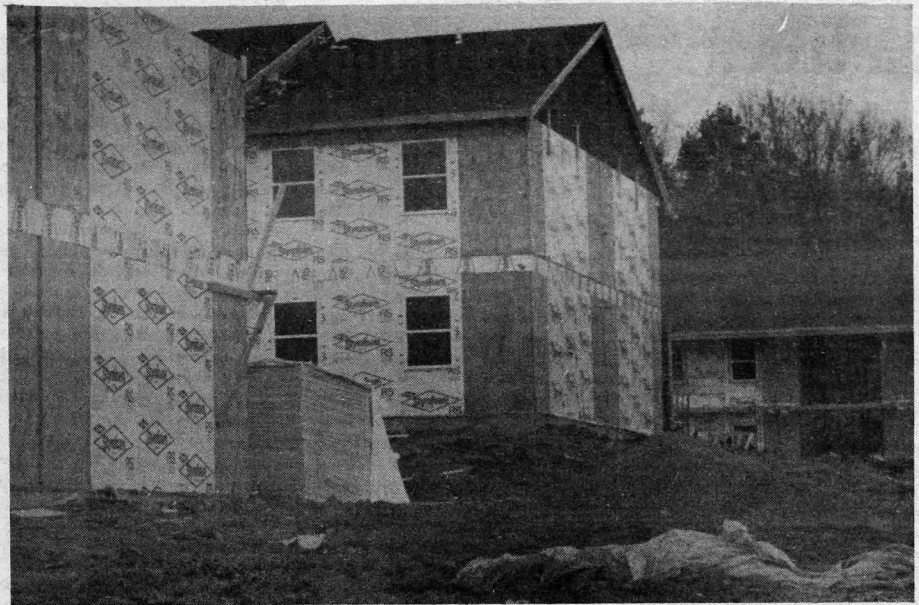
Why are these students coming to ISUE? ISUE is not the largest school in Indiana, being only 19th in population among undergraduate colleges, yet these students who are above the national SAT score average have

chosen ISUE as their school. When students fill out an application of

admittance they list some of their reasons why they have chosen this school, and the top three reasons are consistently the same: Low cost, location, and academic credibility. The low cost in times when college tuitions are skyrocketing is a major incentive, but Paul Lefler, a transfer student from Vincennes, said that ISUE's location and reputation (for academics) were the main reasons he chose ISUE. Gordon Barnett, a freshman from Oakland City, said that it was mainly the closeness of the school to family and friends that brought him to ISUE. As

ISUE continues to get more and varied programs, the chances of more and better students coming here increases. Already ISUE's pre-medical and certified public accounting programs have gained wide-spread attention, and with independence and new housing going up, more students will come in, bringing with them the need for more and still better programs.

The figures used in deciding the SAT scores are from the Admissions Testing Program of the College Board Report of College-Bound Seniors.



Echoes from pounding hammers remind students that the hill adjacent to the main parking lot is being crowned with student housing. The first apartments are expected to be completed by mid-August.

April 12, 1984

# THE SHIELD

Founded October, 1968

Volume 12, Number 15

INDIANA STATE UNIVERSITY EVANSVILLE

## Fall Semester Tuition Hike

by Ken Harper

Tuition fees for ISUE students have been increased to \$41.00 per credit hour for Indiana residents and \$100.00 per credit hour for non-residents. The increase represents a \$2.50 increase for Indiana residents and \$7.50 increase for non-residents. The change in credit-hour-cost was approved by the Indiana State University Board of Trustees and will be effective with the 1984 fall semester.

"Inflationary costs, salaries and healthcare costs" are some of the reasons for the tuition increase, according to Mr. Byron Wright, Vice-President for Business Affairs at ISUE. Wright pointed out that the new masters program and new

computer service programs also reflect the need for additional operating funds. He added that with "more students (enrolled), we need more money" to provide the university services.

Tuition increases during the last 18 years represent a 5.4 percent annualized rate according to Wright. In 1965 when ISUE first opened the doors to students the tuition was \$5.00 per credit hour. Since then, the university has had 12 tuition increases. Tuition increases during the past 5 years represent a 9.5 per cent annualized rate.

University officials are currently working on the 1985-87 budget and are not planning to recommend an increase in tuition, according to Wright, but anticipate a possible increase in tuition during the next three years.

# Letters

## IMPACT Replies to Criticisms

To the Editor of the *Shield*:

This letter is in regard to the articles in the March 29, 1984, issue of the *Shield* concerning IMPACT.

1. IMPACT is a political party, in agreement with the ISUE Student Government Election Board who oversees the election process on campus. Political parties are allowed on the ballot in national, state, and local elections, and do not exceed the limits of the Student Government Association Constitution. At ISUE in the 1976-77 SGA election a PROGRESSIVE party ran and its name was placed on the ballot. This concept is not new, radical, or questionable as your stories suggest.

2. The purpose of political parties is to get voter interest up and to get their candidates elected. IMPACT was formed to get qualified candidates elected for the 1984-85 Senate. This venture was successful, therefore for all practical purposes IMPACT has done its job. The qualifications of IMPACT members are unquestionable. They have served in various Senate seats this year, served on numerous campus organization committees, and in general will provide the leadership necessary for a strong SGA to represent ALL students. This leadership experience is imperative since the President and Vice-President will not be returning next year.

3. Next I take disagreement on certain passages made in stories by Ken Harper that lacked concrete facts behind them:

a) It was stated that IMPACT was "factionalism within the student body." How so? It is not. The students who elected them apparently didn't think so either, otherwise they would not have been elected. For the apathetic people who didn't vote and are making such statements: words are cheap. Why didn't you vote? Voting was easily accessible, being in the UC Lounge for daytime students, at the Redwood Area for evening students, and at Deaconess School of Nursing for the nursing students. You could vote Monday night through Thursday night so time was not a factor. The election process was set up to get the most voter turnout. The voters decided that the IMPACT candidates were the best qualified for the job.

b) Contrary to the report that IMPACT has not made public any specific goals, it has. In an interview with Eric Williams and Mike Meeks, both IMPACT party members, Ken Harper acting as editor of the *Shield*, the public student newspaper, asked what specific goals IMPACT had. They were presented to him, namely being close monitoring of the Board of Incorporators, having a leadership conference for area high school student councils, and more student awareness of the function of Student Government on campus. These goals were omitted from the story. Why, I do not know, but I think the readers were misled.

4. Next I take disagreement on the errors of Pat Foster, the Sports Editor, for his editorial opinion on IMPACT found on page 2.

a) Democracy was not "slapped in the face." A political party was formed (its legality established above) that ran a slate of candidates in a secret ballot election that was open to all students in the university. The students who voted selected who they wanted to represent them next year. If this is a slap at democracy then what is democracy?

b) IMPACT did not propose "changes in the student government's benefits to its members, brushing aside fifty percent of tuition fees for the President and his Vice." With only a slight effort on your part to pick up the telephone you could have found out from the Director of Student Activities or from other administrative sources that this has been a policy of ISUE for at least the past eleven years. IMPACT had nothing to do with it. It is interesting to note that in the *Shield* proposed budget that came out last week the Sports Editor would be getting a \$10 per hour fee waiver on top of getting paid for each issue of the *Shield* cranked out. Who's getting the benefits?

c) IMPACT could not pass any legislation favorable to it. First of all let me restate that IMPACT was formed only to get qualified candidates to run for SGA elections. The voters decided who they wanted to represent them. Therefore IMPACT has served its intended purpose so there is no need for IMPACT to remain active. Second, the Student Government Association is based on three branches of government, with checks and balances similar to our national government system. The Ex-

## Basketball Foolishness

To the Editor:

I really believe that Rae Johnson could have done a better story reporting the ISUE vs. Lewis game. The headline "Basketball Is Foolishness" could have been a light hearted joke to some sports fans but I was upset and offended by it.

Basketball is my favorite seasonal sport, I don't play the game but I watch the games closely (UK, IU, and ISUE). We (ISUE) did not have a terrific season but I supported them all the way.

Rae Johnson's article could have easily stated the score, included highlights and come up with an interesting, informative story without such "foolishness" and dumbness on his/her part. Sports stories don't have to be written on a sophisticated level, but this appeared to be written on the third grade level.

The reporter's recounting of personal experiences, i.e. "When I first arrived at the game I didn't even know where to sit..." seemed juvenile to me, a college student. When recounting personal experiences, I think Johnson should keep in mind the audience who is reading the article. Johnson may not know much about basketball, but this is basketball country, and I think the article was written and printed in poor taste.

Kim Phillips

## Spring Break Travel

To the Editor:

In response to the article "Florida Trip Full of Problems & Poor Communications" in the March 29 issue, I would like to tell the facts that I was given by John Behlke, Travel Associate agent.

The bus would arrive between 8:30 and 9:00 p.m. Friday, March 9. Since I was concerned that the bus might be running late, I told John to have the bus driver call at 8 p.m. and tell two of the trip's participants if the bus was on time or running late.

One of the students was given a free trip and was to act as the group leader. Because the group leader was driving down she said she would make sure her friends knew that the bus driver would call them at 8 p.m.

Mr. Behlke said he could not find a bus with 19 seats open, and since I could not fill a bus, Mr. Behlke said I could give everyone the option to drive down themselves or cancel the trip. Six people said they could go in their own cars. Mr. Behlke was able to get the other 13 students on the Iowa bus.

Since I was concerned about the problems I have had with Mr. Behlke and Travel Associates, I wrote a letter to the President of Travel Associates,

executive branch can veto acts of the Senate, the Senate can override the veto of the Executive branch, and the Supreme Court can rule acts of the Senate or Executive branch unconstitutional and order them to cease. If any of these safeguards fail then action could be taken through university channels where the ultimate decision rests in the Board of Trustees, who derive their power from the State of Indiana. The interests of the whole student population is protected by such checks and balances.

d) Mr. Foster, you demand that new elections be held. Please do so, except not just in the newspaper, but through official channels. The elections were held properly and legal, but don't take my word. The Student Government Election Board has unanimously ruled that the elections were "run according to the rules and procedures set down by the present constitution." That Mr. Foster means that one official channel has found the elections proper and legal. Your next avenue of appeal is the Student Supreme Court. I encourage you to do so to put your mind to rest so that the fear of conspiracy and doubt about the validity of this election does not linger. Next year's Senate does not deserve to be doubted. It will do an outstanding job.

e) Also in your opinion you state that "the student government need represent only the separate organizations and groups within the university system...by a member amongst their own, not a group of individuals promising to work for everyone...." The whole purpose of the Student Government Association is to represent all students, not just those who happen to belong to an organization or group. If representation was dependent on club membership what of the student who doesn't belong to a club?

Ms. Susan Horn. Ms. Horn apologized for the problems with the trip, and she said the problems should not have happened. She said it must have been easier for the people (of Travel Associates) in Florida to blame everything on me and that the Problems were not my fault.

I hope that my letter explains my feelings about the trip. I did not want the students to wait hours for a bus to arrive, nor did I want them to get put into any hotel other than the King's Inn. Everyone driving down themselves was told that they would not be able to check into the hotel until 4 or 5 p.m. Saturday.

In conclusion, I would like to say that individuals can coordinate trips; I have done a ski trip and the Florida trip. However, from my experience I do not feel that I have the clout that the university would have to get things done. Due to the student interest, the university and the Activities Programming Board should sponsor these trips.

Sincerely,

Lori Muehlbauer

## APB Entertainment

To the Editor:

I would like to take this opportunity to say that I think the A.P.B. usually does an excellent job of providing entertainment for the Student Lounge. However, I don't think that this was the case when the Comic/Magician played in the lounge on April 4, 1984.

I only got to see approximately thirty minutes of his show, but during those thirty minutes, I feel that I saw enough. In that short time, he made three offending remarks to innocent people who were either entering or leaving the lounge. On the first occasion, he pointed out two girls entering the lounge, and called them "lesbians". The second time, he picked out a handicapped guy leaving the lounge and proceeded to harass him about his injuries. The last incident, he pointed out a young girl who was attending school with her mother, and offered her a doll that spouted off obscene language. Her mother was obviously embarrassed and took her out. The sad thing is, until he made these remarks, he had an excellent show going.

From the remarks I heard later in the day, I was not the only one offended by these comments. I enjoy the programs offered in the Student Lounge very much, and I want to see them continued, but I hope that in the future, acts are more closely scrutinized before being booked.

J. King

f) Mr. Foster, stick with sports. You do a better job than writing political stories.

5. Finally I think that all of the stories presented on the elections were biased.

a) It was implied that I control IMPACT (reference "...They will not let me down."). I do not and have no desire to. Besides, I couldn't even if I wanted to. The checks and balances mentioned above prevent such abuse. Also there are seventeen Senators, each with his or her own opinion and the opinions of their constituents. It would be impossible to control such a group for personal gain. I am not going to be active in Student Government next year. I intend to devote my spare time to homework. Graduate schools like to see good grades.

b) The final results of the election was not even reported. Why not? It would be nice for the student body to know who was elected.

c) Reporters are supposed to keep personal feelings and emotions out of their stories. I believe that you have failed to do that. If you feel emotional about an issue then write an editorial. That is what an editorial is for. Front page news is for facts from both sides of the story. If you read the facts presented here and then read the front page from March 29 you will see the one-sidedness that was presented. Please prevent this from happening again.

Respectfully yours,

Ed White  
Science and Math Division junior  
Biology Major

# Spring Week Is Going Bananas

Go bananas with Spring Week this year April 19-28 and enjoy some spring-like activities from the annual Eagle Gran Prix to the banana olympics.

Steve Dealph, APB Spring Week Chairman, wants to emphasize that Spring Week is designed for independent students. "It's for everybody, and we hope all students get out and take part and enjoy Spring," stated Dealph. Go bananas is the theme for this year's

## Spring Week.

Kicking off Spring Week April 19 at 9 p.m. is the "Spring Fling" semi-formal dance. With the "Footloose" theme, the U.C. dining room will be rolling with the sound system of the disc jockey, videos on the large screen TV, and a live camera on the dance floor. The tickets are \$3 per person or \$5 per couple unless you BYOB (bring your own bananas). This en-

titles fifty cents off of each person's ticket and also entitles you to the banana split bar where you are supplied with ice cream and all the works.

Also at the "Spring Fling", two out of the 14 candidates will be chosen for Bachelor and Coed of the Year. Candidates were chosen by any organization wishing to sponsor a male and/or female. Voting for the candidates will take place April 16-19 at 10 a.m. - 2 p.m. in the U.C. Any student can vote but must show their student I.D. card. At 10 p.m. winners and runners-up will be announced at the dance.

Also planned for Spring Week is a canoe race, guitarist Parker MacDonnell, the annual Gran Prix, a visit from comedian Tim Settimi, and the banana olympics. Rules and entry forms can be picked up at the U.C. information desk for any of these events. Also planned is an art club sale and demonstration in the U.C. mall on April 24, 25, and 26.

The banana olympics will be held April 24-27 which includes the banana toss, banana eating contest, banana derby, and banana punt, pass, and kick.

The canoe race will be held on Reflection Lake on Thursday, April 26. The annual Eagle Gran Prix will be held on April 28.

Comedian Tim Settimi will be appearing the U.C. on Wednesday, April 25 at 11 a.m. and noon. According to Dealph, Settimi also does mime and is very diversified. He believes Settimi will make a tremendous appearance at ISUE. On Friday, April 27, Parker MacDonnell will be performing with his guitar in the U.C. at 11 a.m. and noon.

So why don't you quit monkeying around; pick up your applications and go bananas with Spring Week this year and get a taste of Spring.



Bachelor and Coed of the Year Candidates  
Front row (L to R) Brian Trimborn, David Woods, Scott Titzer. Second row: Mary Barthel, Trenton Hall, Jana Simpson, Tina Jackson, John Johnson, Kim Phillips, Angie Wittmer, Pat Bittner, Tonja Pitzer, Kathy Brady. Candidate absent: Kelli Seddon.

## Deposit Needed for Housing Contracts

by Ken Harper

Hundreds of Mid-American Student Housing (MASH) applicants will be busy submitting housing contracts next week. MASH officials plan the first housing contract mailing to be sent "out by the 15th" of April, according to Dr. Donald Bennett, Vice-President for Administration.

Over 800 applicants have requested a housing contract and more requests are being received. Bennett, ISUE liaison to the MASH board, said he hopes the students "wouldn't put it off" when they receive the contracts. The contracts will be processed according to the return postmark and require a \$100.00 deposit.

Students qualifying for one of the 36 Federal Housing Authority (FHA) apartments will be "married students or heads of households". The FHA approved one-bedroom apartments will cost \$1,305.00 per semester, \$2,610.00 per nine-month academic year, \$3,360.00 per twelve months or \$825.00 per three-month summer.

Students renting the remaining 124 apartments will have the same rental options. The two-bedroom apartments, occupied by four students, will cost each student \$495.00 per semester, \$990.00 per nine-month academic year, \$1,200.00 per 12 months or \$275.00 per three-month summer. Students interested in MASH apartments should contact the Administration office for more information.

Housing officials are hopeful that the first MASH apartments will be ready to rent by mid-August. Progress is being made to complete a model apartment at the complex located at 8150 Clarke Lane. The apartment will serve as a showcase for visitors and a temporary office.

The past two weeks of warm weather have allowed carpenters to erect the framework of the fifth apartment building. Housing officials are satisfied with the construction progress according to Bennett.

The MASH project will provide the first student housing complex for ISUE students. The project will be operated as a private enterprise and for many students the housing will be their first opportunity to live away from home. Bennett said students could best demonstrate their appreciation of the housing project by "using the apartments as if they were their own."

The apartments will have 765 feet of space with living room, efficiency kitchen, and private baths for each bedroom. The apartments will be fully furnished by students will be required to provide their own linens, culinary utensils and private reading lamps.

## Honors Day Set

Honors Day will be celebrated this year on Thursday, April 19 beginning at 9:30 a.m. in the Physical Activities Center. Faculty and students should plan schedules according to the following changes that morning:

8:00 a.m. classes meet from 8:00-8:40 a.m.

9:30 a.m. classes meet from 8:45-9:25 a.m.

11:00 a.m. classes meet as usual

### Congratulations To:

Tau Kappa Epsilon

1984-85 Officers

President—Scott Wright

Vice President—Scott Heneisen

Treasurer—Jae Aldridge

Secretary—Pat Peach

Historian—John Johnson

Chaplain—Jim Quehl

Educator—Steve Grammer

Doorkeeper—Dave Hammelman

TKE Little Sisters

1984-85 Officers

President—Tami Cassidy

Vice President—Debbie Vincent

Secretary—Phyllis Flamin

Treasurer—Lisa Simpson

## Easter Arrives Early at ISUE

What do purple eggs, warm weather, a bunch of children, bunnies, and the month of April all have in common? The annual Easter Egg Hunt to be held at ISUE April 21, that's what.

The hunt will be held from 10 a.m. to 12 p.m. on Saturday, April 21. It is open to children from 1 year old to 10 years old. Prizes and candy will be given, and the hunt is sponsored by APB.

## Strong Message Evident in "Bury the Dead"

by Debbie Kissel

While corpses were rising in their graves, the audience was scooting to the edge of their seats in ISUE's strong and powerful drama production, "Bury the Dead" that was shown April 5-7 and will continue to play April 12-14.

Not only did "Bury the Dead" by Irwin Shaw explode on the New York left-wing stage in 1936, but it still carries the capacity to explode in 1984 especially with the help of well-done acting, an ideal stage setting, and professional-looking promotion that ISUE theatre planned and succeeded in creating.

"Bury the Dead" tells the story of six dead soldiers who rise from their graves and refuse to be buried. The corpses head off to speak against war despite pleas by their women and the establishment leaders to lie down and allow themselves to be buried.

The performance, which alternates between the serious and humorous was not one that focused on actual activity but rather concentrated on a message, and it succeeded in saying it.

The message of the play was said quite well by Shaw in 1936. "I feel that life is too fragile and fine a thing to be treated as butcher's meat in the markets. What is there to fight for when next the trumpet blows and girls sell men to the army at a kiss a piece in public squares throughout the United States."

Judy Beck performed excellently in her lead role as Martha Webster, the wife of a protesting corpse. She argued, "Now, you stand up! Why couldn't you stand up before?" In the end, she convinces everybody to stand up for their rights.

Laura Hubbell and Gregg Gerling were superb in their parts as Elizabeth Dean and Jimmy Dean. Hubbell played the role of Jimmy's mother who pleaded to see dead Jimmy's 20-year-old face that was blown up by a gunshot. So dramatic was this scene that it actually gave me goosebumps.

Sherri Hoy played her leading role as the sister to dead Driscoll, portrayed by Allen French, with her usual acting talent. Terri Klingelhofer also made a great appearance when she committed suicide after talking with her dead husband.

Neil Cole does a fantastic job in his role as the main general who tries to convince the corpses to lie down and be buried. His realistic attitude and actions in his role, combined with some light humor, makes him a very enjoyable actor to watch.

The play lasts approximately 1½ hours and although some scenes may seem to be a little dragged out, it is necessary in order for the main point to come across.

If you haven't seen "Bury the Dead" you really ought to do yourself a favor and go see it. Director Doug Hubbell and the whole ISUE theatre has done a great job, and it is still showing April 12-14.

# Eagle Sports



## ISUE Drops Burns as Basketball Coach

by Patrick D. Foster

Shield Sports Editor

University officials have decided not to renew the contract of ISUE head basketball coach and athletic director, Creighton Burns, when the agreement expires June 30, 1984.

The decision was finalized by University President, Dr. David L. Rice, following a recommendation from Dr. Donald Bennett, ISUE vice-president for administrative affairs. Bennett, and athletic board director, Dr. Charles Bertram, informed Burns of the decision on Thursday, after he returned from the NCAA Division I basketball finals.

No reasons have been given for the decision. "It is the policy of the University," Bennett said, "not to discuss personnel items. But, I can say that it was in the best interest of the sports program not to renew the contract."

Burns was quoted earlier in the week, by an Evansville newspaper, as having heard of the decision while he was in Seattle, from another Great Lakes Valley Conference coach. Burns did not say who the coach was, but the coach had apparently been contacted by the University and asked if he was interested in the job.

Burns replaced Wayne Boultinghouse, as Eagle basket-

### ISUE Forms Committee to Find New Basketball Coach

A "Search Committee" to find a replacement for ISUE head basketball coach, Creighton Burns, was formed this week following a University decision denying renewal of Burns' contract which ends June 30, 1984.

The decision was finalized by ISUE president, Dr. David Rice, after a recommendation from Dr. Donald B. Bennett, vice-president for administrative affairs. Bennett and ISUE athletic board director, Dr. Charles Bertram, informed Burns of the decision last Thursday.

According to Bennett, the task of the "Search Committee" is to recommend to the University a replacement for Burns, through a quickened process in order to receive final approval from the University Trustees at their May 11, meeting.

Bennett and Bertram co-chair the committee, which has also enlisted six other members of the university establishment, including Doug Claybourn, a member of the athletic board and alumni representative; vice-president of business affairs, Byron Wright; Varsity Club member, Terry Babb; ISUE Foundation member and Varsity Club member, James Will; assistant to the President, Sherrienne Standley; and Tanja Pitzer represents the student element of the committee.



Dr. Donald D. Bennett

"It was in the best interest of the program not to renew the contract."

1984  
1985

students are present on the new committee.

Bennett said that the committee will consider all applications for the position, and that the University does not already have someone in mind for the job. "We'll get the word out to as many people as we can," Bennett remarked. "The final decision will be up to the individual whether he'll apply or not."

The committee's recommendation will go to Bennett, "and I will consider that recommendation," Bennett said. "My recommendation will then go to President Rice. The final decision will come from the Board of Trustees." The Board meets May 11, so the "Search Committee" will be pressed for time to meet the deadline.

Bennett said the decision not to renew Burns' contract could make the assistant coaches job a tentative one for Mark Bial. Bennett said that it is normal in college basketball that the head coach pick his own assistant. "I can't speak for who the new head coach will pick," Bennett remarked.

Bial said it was not normal among Division II schools to have the head coach pick his own assistant. He said it was a practice primarily adopted in the larger, Division I schools. "I'll keep recruiting and doing my job,"

Continued on page 7

ball coach in 1981. His third year as basketball mentor ended with a disappointing 10-18 season tally.

The two previous ISUE teams under Burns posted 15-12 and 15-13 season records. The majority of this year's losses were by eight points or less, with a team consisting mostly of underclassmen. The 1983-84 record was the worse record at ISUE since the 1975-76 season.

The 41-year-old Burns is a graduate of Purdue University and has been coaching basketball since 1967. As a high school coach, Burns compiled a 163-82 record. Burns then became an assistant coach at Armstrong State University for two years, and one year as assistant under Boultinghouse, before taking the reigns of the athletic programs at ISUE.

As a result of the University's decision, a "Search Committee" to find a new basketball head coach and athletic director has been formed. Bennett, and Bertram, will serve as co-chairmen on the committee, which includes six other members from the University establishment. Members from the athletic board, ISUE alumni, the foundation board, the Varsity Club, and the

## ISUE Men's Baseball is "Coming Around"

by Patrick D. Foster

Shield Sports Editor

The ISUE men's baseball team squeezed in six games over the weekend and came away with a split in three days of action. The Eagles travelled to Eastern Illinois on Friday (April 6) for a pair of games where they were defeated 8-0, and were victors in the nightcap 12-11. The Eagles split Saturday's double-header with Wright State, losing the opener 10-4, and winning the second game 5-4. Visiting Northern Kentucky on Sunday, the Eagles took the first game 4-3, but were defeated for a third split, 4-7.

ISUE junior, Kirk Traylor batted .470 over the six games, hitting safely eight times in 17 at-bats. Traylor's double in the seventh inning of the nightcap game against Eastern Illinois made Greg Stewart's single provide the margin of victory with a game winning RBI.

The Wright State Raiders clinched game one of their double-

header with ISUE when they scored five runs in the seventh inning, fixing a 10-4 Eagle loss. The Eagle men turned around in game two with five runs in the first two innings of play. Centerfielder, Dave Weaver, picked up three RBI's during that two-inning stretch scoring Traylor twice, and rightfielder, Bob Beck, once. New Harmony product, Jeff Embry, and Evansville junior, Greg Hobgood, provided the necessary hits to score two more Eagle runs, sealing their 5-4 victory over Wright State.

With two outs in the ninth inning, and the game tied at 4-4, leftfielder, Stewart, hit a double, setting up the winning run against the hosting Northern Kentucky club. Weaver provided the punch home, with a double, scoring Stewart. Weaver leads the ISUE team in Runs-batted-in, with 22. Hobgood is second in RBI's with 14.

The Eagles are supporting a fine 10-3-1 season record going into a three-day, five-game tournament



1984 ISUE men's baseball team

(Front row) Greg Stewart, Chris Berfanger, Mike Crews, Steve Colvert, Todd King, Eric Williams, Kirk Traylor, Rod May, Dave Mitchell, Dave Weaver. (Middle row) Tim Martin, Greg Hobgood, Dale Crossfield, Randy Ward, Bryon Garland, Tom Wallace, Mark LaRue, Van Hook, Dave Papariella. (Top row) John Somers, Greg Newlin, Bob Beck, Bob Sensenbrenner, Ivan Kuester, Larry Shown, Greg Merhel, Jeff Embry.

Continued on page 7

## Sports Editorial

# Fame and Fortune: A Nightmare He Never Dreamed

by Patrick D. Foster

Shield Sports Editor

A 10-year-old boy told me of his life-long dream; he wanted to be a professional baseball player. He wanted to be a pitcher for the Detroit Tigers. "I want a million dollars a year," he exclaimed. "I want to be in the World Series. I want to be in the Hall of Fame."

Two hours before I had learned a story of a man who became a professional baseball player. He was a pitcher for the Tigers who made it to the World Series. He hasn't made it to the Hall of Fame, and maybe he never will. But the story is about a man who was paid a lot of money to pitch for the Tigers. Along with the money he earned a lot of fame and recognition. Today, Denny McLain is in court, fighting for his life and respect, opposing the forces of fame and fortune which led to gambling, drugs, and eventual "loss-of-face."

McLain's meteoric rise to the elite in professional baseball culminated in 1968 when he became the first 30-game-plus winner in more than three decades. In that same year he led the Tigers to a World's Championship. McLain crested in 1968 as a professional player, but his addiction to the darker forces in man is seeing to his dis-fortune.

It is possible McLain was not aware that he was in any problem. His life became embroiled in mafia schemes and gambling rings. Had he been able to recognize that he was acting poorly, even illegally, possibly he would not be broke, like now, in court, and facing a possible jail sentence for years to come.

When the boy asked me if I thought his ideas were good, and if they were worth going after, I wasn't sure what to tell him. I said, "Be what you want to be, and always eat your vegetables. Baseball players have to be strong. And do well in school, because baseball players also have to be smart." He replied, "I'll never eat spinach."

Speaking with the boy a few more minutes, I was refreshed by his innocence of the world around him. He hadn't heard of the story of Denny McLain, the Tigers pitcher who let the fame of professional sports better him. He didn't know much about drugs, and didn't understand what the mafia was. So far, he was safe.

If only Denny was ten, again.



(Top) Lady Eagle freshman, Marcie Ashworth, delivers a pitch during recent ISUE softball action against St. Louis.

(Bottom) Freshman, Melinda Berberich, heads towards first base after hitting a grounder to the St. Louis infield. She was thrown out at first on the play.

## Sports Medicine and Student Health

### Aerobic Dance: Good for Fitness?

by Bryant Stamford, PhD

If improving cardiorespiratory fitness and losing body fat are your goals, the best approach to fitness is aerobic exercise. To produce the desired results, aerobic exercise must consist of some rhythmic activity that uses the large muscle groups of the body and sustains an elevated heart rate for a prolonged period of time. Of the exercises that qualify, the most popular are jogging, swimming, and bicycling. Unfortunately, many beginners find these activities boring, and their initial enthusiasm for fitness wanes. Until the advent of aerobic dance, it seemed that nothing could bridge the gap between enjoyment and results.

Aerobic dance is an attractive form of exercise. Participants do not encounter the harassment that many joggers do, nor do they need to deal with unpredictable weather. Putting movement patterns to music provides an opportunity for variety and creativity. Because aerobic dance is usually performed by a group of people, the camaraderie that develops adds to the fun. It is a safe bet that many people now engaged in aerobic dance would not be exercising at all if jogging were their only alternative. Although aerobic dance has traditionally appealed to women, men are starting to join in and often find the lack of competition refreshing.

Most people find aerobic dance enjoyable. But does it produce results? The answer is both yes and no. No, if you merely move around to the music. Yes, if you are dedicated to hard work and understand that aerobic dance is an aerobic exercise.

A good aerobic dance program elevates heart rate to between 70% and 85% of your maximum level for at least 15 minutes at a time. At this intensity, an aerobic training effect is likely to develop, and your cardiorespiratory fitness will improve. Intensity is the key to attaining fitness through aerobic dance, and heart rate is the key to intensity. You should learn to accurately measure your heart rate, and you should monitor it periodically to ensure that you are exercising at a sufficient intensity. To measure heart rate, find your pulse at the wrist. Count the number of beats in a 15-second period, then multiply by four. To calculate your maximum heart rate, subtract your age from 220.

Other benefits of properly performed dance routines are development of flexibility and muscle endurance. Depending on the choreography, certain muscle groups—particularly those in the legs—can be strengthened. You should select a dance program carefully; some programs may develop the muscles of the upper body to some degree while others may not have any effect. Most programs can help reduce body fat; the number of calories burned while dancing is comparable to those lost while jogging at a slow pace.

Frequency and duration of exercise are also important. The best schedule seems to be 15 to 60 minutes of continuous aerobic activity three to five times a week. Research on aerobic dance has not been plentiful, but a few studies have indicated that it can improve cardiorespiratory fitness over a period of 8 to 12 weeks. However, these short-term studies may not be appropriate means of evaluation. Longer periods of time are likely to be required for participants to learn basic movements and to lose any social inhibitions that may restrict movement.

Although aerobic dance has a low injury rate and leads to few cardiac problems, you should take some precautions when you work out. Shinsplints, tendinitis, pulled muscles, back strain, and stress fractures to bones in the feet can occur. The number of injuries could increase as more men and older individuals get involved. If you are over 35 years of age and are contemplating joining an aerobic dance class, a physical examination is recommended. The chance of injury can also be reduced by following sound exercise principles: Warm up with stretching exercises. Avoid ballistic (jerky) movements. Don't attempt too much too soon. Progress slowly. Wear shoes built for shock absorption.

It's a good idea to start a program under the supervision of a qualified professional instructor. Once you learn the basics and build a sufficient level of stamina, you can begin a program on your own or with a friend. It is difficult to put together a good routine from reading a book.

Dr. Stamford is director of the Exercise Physiology Laboratory and professor of allied health, School of Medicine, University of Louisville, Kentucky.

**TEST YOURSELF:** Are you an effective time-manager? Can you work 2-4 hrs/wk consistently? Are you success-oriented? Earn base + performance-based bonuses. 1-800-243-6679.

**UNIVERSITY  
TEXACO**

*Backs the  
Eagles*



Red Bank & Hwy 62  
Special Rates to Students  
423-7556

**THE LIBRARY LINE**

Rose Scruggs

**Final Exams Change Library Hours**

Spring has sprung and Final Exams are close on its heels. Library Services' extended hours for Finals Week, May 7-11 are as follows:

Saturday	May 5	9:00 a.m. - 4:30 p.m.
Sunday	May 6	1:00 p.m. - MIDNIGHT
Mon. - Wed.	May 7-9	7:45 a.m. - MIDNIGHT
Thursday	May 10	7:45 a.m. - 7:00 p.m.
Friday	May 11	7:45 a.m. - 4:30 p.m.

The above hours are for the main and upper levels of the library only. There will be Reference assistance all during our extended hours. The Learning Resources Center and Special Collections/University Archives will be open their regular hours.

You should also remember that the Writing and Math Clinics will not be in session during Finals Week. Tutors also need to study for finals.

If you're still working on a Research paper and need to use the Interlibrary Loan service, don't forget you are dealing with the postal service along with our efficient staff. An Interlibrary Loan request could take as long as a week for processing, depending on the distance the material has to travel. You should also remember that each request will cost you \$1.00, so be sure of your needs.

As I mentioned earlier, the Writing and Math Clinics will be closed after May 4, so if you need help you had best stop by soon. After the clinics close there will still be materials in the Learning Resources Center that can give you pointers on grammar and tips on organizing your papers.

Of course if you're all caught up, and just looking for something to do between classes and exams, you might check with Ms. Walker in the Special Collections/University Archives about new press kits. It might help you decide which new films in town you want to see first. You could come to the Learning Resources Center and listen to records. We don't have the top 20, but we do have some classical music for easy listening, or if you're into Shakespeare you might want to browse our collection of his plays. You could also read the latest issue of *Time* or *Rolling Stone* on the main floor of the library. As you can see there are any number of resources available to you.

For the first time you will be able to take a break in the Student Lounge during our extended hours. You can refresh yourselves without having to leave the building. The rules concerning the lounge haven't changed, so be advised abusers of the rules will be dealt with accordingly.

Don't forget there are TRS-80 microcomputers available in the library. During our extended hours you can work on your assignments late into the evening. You do have to supply your own paper for the printer, and remember the computers are available on a first come first serve basis.

Students may also use the Commodore 64 micros in the Computer Literacy Training Center Mon.-Thur. from 3:30-4:30, and all day Friday unless the Center is otherwise occupied. Sunday hours of 1:00-5:00 are also available. There is a printer available in the Training Center for use as well.

We in Library Services hope to make your Final Exam period as painless as possible. Please ask if you are not finding what you need.

**Humanities Offers Grant**

The National Endowment for the Humanities has announced a unique grants program consisting of working full-time for nine weeks during the summer, researching and writing a humanities paper under the close supervision of a humanities scholar. Applicants must be under 21 years of age.

The Young Scholars Program will award up to 100 grants nationally for outstanding research and writing projects in such fields as history, philosophy and the study of literature.

This is not a financial aid program; no academic credit should be sought for the projects, and competition for these grants is rigorous.

For guidelines, write to:  
 Younger Scholars Guidelines CN, RM 426  
 The National Endowment for the Humanities  
 Washington, D.C. 20506

**BALLOON EXPRESS**



**"CHECK OUR PRICES BEFORE YOU BUY"**

- BALLOONS
- STUFFED ANIMALS
- PARTIES - SHOWERS
- MUGS
- SILK FLOWERS
- BUTTERFLY BOUQUETS

425-1222 Mylars \$2.25 each

1902 W. FRANKLIN



**Lambda Chi Alpha Receives Charter**

Lambda Chi Alpha, ISUE's latest fraternity, finally received its charter after being colonized over three years ago.

The fraternity received its charter March 30, 1984 at a black-tie formal banquet in the U.C. Dining Room.

Mr. Watler Moser, the Grand High Delta of the National Fraternity, was the key-note speaker and delivered the main address. Mr. Frank Maez, director of chapter services, presented the charter. Also in attendance were Dr. and Mrs. David Rice and Mr. and Mrs. Barry Schonberger. In all, 140 people were present, according to Mike Olivaz, banquet coordinator.

Lambda Chi Alpha was first colonized March 20, 1981 with 12 boys including Mike Percel, now a graduate of ISUE, who originated the idea of the fraternity.

Membership is now up to approximately 65 people, and they are currently looking for a house.

**ARK Provides Child Relief**

The ARK: Crisis Prevention Center is a non-profit organization that operates a nursery where parents experiencing stress can bring their children when they need to separate themselves from child care responsibilities. The nursery provides intervention into a possible abuse incident. Parents can bring their children between 8:30 a.m. and 3:30 p.m. for up to four hours while they seek counseling, job hunt, apartment hunt or just need to be alone to sort out their feelings. Anonymity is guaranteed to the parents.

The ARK has more than doubled in use in the past year and has seen a need to relocate so that 24-hour service can be given.

Snyder's



**UNION BAY FASHIONS**

for Young Women and Young Men

Fun fashions by Union Bay for young women and young men at parties, in class...in style.

Jr. Fashion Denim includes check, stripes in baggy trouser, crop ankle length jeans. Thermal sheeting vest and plaid camp shirt. White, aqua, pink and indigo. S,M,L 3-13. \$12-\$36. Junior View.

Young mens cotton denim jeans in indigo pin stripe, 5-pocket sytle. 28-36 for \$28 Cotton camp shirt with knit collar in white, black, rose, electric blue. \$18 Button front sweater vest, white, graphite, teal and grape. \$24. Tops S,M,L,XL Young Mens

Continued from page 4

**Burns**

Bial remarked. "I will put in my application for head coach, though."

Bial was head basketball coach at Northland College, in Ashland, Wisconsin, for three years before coming on as assistant coach at ISUE.

The two major Evansville newspapers have speculated as to possible candidates for the position of ISUE head coach. Names such as Bosse High School head basketball coach, Joe Mullan, and former ISUE head coach and current director of development at ISUE, Boultinghouse. Boultinghouse declined to comment because of the issue's sensitivity and his position at the University.

Continued from page 4

**ball**

at Wright State this weekend. Weaver leads the team in batting with a .404 hitting percentage (19-47). Traylor and Stewart follow closely, hitting .395 and .387, respectively.

Head coach, Larry Shown, said he felt the players were "starting to come around." The season has been delayed for nearly 30 games this season because of bad weather. "I would like to have done better," Shown admitted about the 3-3 split over the weekend, "but I can't complain."

**Guitarist To Perform**

Dennis Koster, the Alcoa Foundation Affiliate Artist, will perform at Indiana State University Evansville on Sunday, April 15 at 2:00 p.m. in Forum One of the Administration Building.

Koster's earlier appearances have been "informances," where the artist establishes a lively dialogue with his audience. This appearance, more formal than the informances, will be Koster's first "performance" in Evansville.

A unique figure on today's concert and recital stage, Dennis Koster is perhaps the only guitarist to be internationally recognized as a master of both classical and flamenco guitar. He will be in the Evansville area for two weeks each month during April and May, 1984, in the series presented by the Evansville Arts and Education Council and supported by the Alcoa Foundation, with additional assistance from the National Endowment for the Arts. As the Alcoa Foundation Affiliate Artist, Koster's appearances throughout the community will be free.

Koster began his career as a flamenco guitarist in New York City, where he was the sole protégé of a renowned flamenco guitarist Mario Escudero, and one

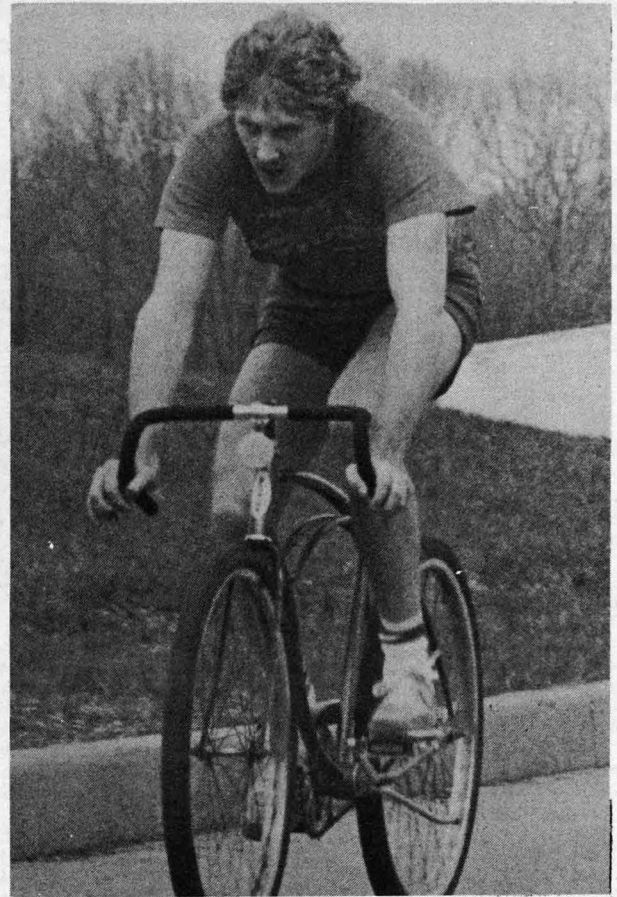
**Eagle Gran Prix Schedule**

**Time Trials:**  
 April 14, 1984  
 10-2 p.m.

**Banquet**  
 April 27, 1984  
 UC Dining Room  
 6:00 p.m.

**Race Day**  
 April 28, 1984  
 11:00 a.m.

of the few guitarists to have studied with the legendary flamenco master, Sabicas. Throughout the 1960s, he appeared as a soloist with numerous Spanish dance companies in New York's major concert halls, theatre and night clubs. He also toured throughout New England with the Maraquita Flores Spanish Ballet, and in 1971, toured Spain where he played alongside gypsy artists—the native practitioners of flamenco.



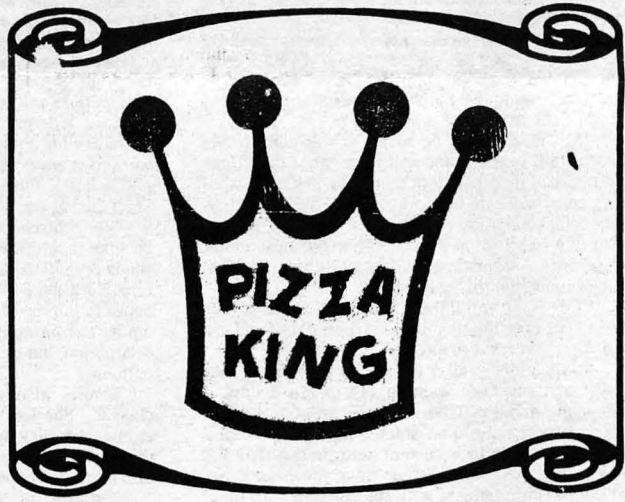
**REMEMBER** CALL **LOST AND FOUND**  
**464-1780**  
 to ask about items you may have lost on campus!

**JAKE'S**  
 217 Main (on the Walkway)  
**DARTS**  
 Import Beers, Wine & Food  
 Live music on Friday 8:30-11:30

**MARK BARBEQUE**  
 Ribs • Chicken • Pork • Beef  
 HOURS TUE-SAT: 9 A.M.-9 P.M.  
 SUN. 9 A.M.-7 P.M. CLOSED MONDAY  
 Inside Dining • Burgoo  
**COMPLETE CARRY OUT SERVICE**  
 (CATERING)  
 PLENTY OF PARKING  
 LOCATED BEHIND HILLTOP RESTAURANT  
**425-1616**  
 3119 W MARYLAND

**Divers World INC**  
 Sales-Air Service  
**423-2738** Classes Rental  
 1271 E. Morgan

**Rose Cleaners**  
 1 Day Service Monday thru Saturday  
 The Most In Dry Cleaning  
**BOB and MARLENE GEIER**  
 OWNERS  
 718 N. Sonntag Ave. Bus. 426-2318  
 Evansville, IN 47712 Home 963-3287



**Deadline for Shield Editor applications**  
**Friday, April 27, 1984**  
 Send to:  
**Ann Humphrey**  
**FWA 35**  
**Telephone 464-1893**

**FORUM FORUM FORUM FORUM**  
 Readers are invited to express their views in THE SHIELD. Letters to the Editor should be two hundred words or less and must include name, phone number, class standing and major. Readers interested in contributing to the Perspective column should limit articles to a thousand words or less. Articles must be typed double-spaced and include name, phone number, class standing and major. Address correspondence to Editor, THE SHIELD, ISUE, 8600 University Blvd., Evansville, IN, 47712. Ph: 812-464-1870.

**Editor**  
 Ken Harper

**Sports Editor**  
 Pat Foster  
**Associate Editors**  
 Shannon Harper  
 Rae Johnson  
 Debbie Kissel  
 Bryon Zint  
**Reporters**  
 Glenda Hollander  
 Terri Klinghoefer  
**Advisor**  
 Tom Rivers

**Business Manager**  
 Kathy Konrad  
**Advertising Manager**  
 Terri Case  
**Circulation Manager**  
 David Konrad  
**Typesetting**  
 Terri Koch  
**Advisor**  
 Ann Humphrey

The opinions expressed are not necessarily those of the University, its administration, its faculty or student body. By-lined columns reflect only the opinion of the writer.

**THE SHIELD**  
 Printed by the Mt. Vernon Democrat, Mt. Vernon, IN.

# Student Appointed to Board

by Shannon Harper

"I was just like a caged tiger pacing inside my house," said Nancy Malin about the time she waited to find out if she had been appointed to the student position of the ISUE board of incorporators.

After being chosen as one of the final two candidates for the position by Gov. Robert Orr, Nancy was interviewed by the governor and told she would be contacted the next day whether she was selected or not.

When the call came, the news was as she had hoped. She was Orr's choice.

"I was real ecstatic," she said. "I just almost couldn't contain myself. I really wanted to just scream and here I was talking to the governor."

Malin, a junior marketing major, said the events leading up to her appointment "all happened so fast."

After being recommended by ISUE instructor Nancy Bizal of the Business Division for the position, Malin was contacted by SGA and asked to complete an application on the deadline day.

Malin had been a student in Bizal's business communications class, and she credits Bizal and Professor Barbara Marting with much of the support and encouragement she has received during this undertaking.

She says it was Bizal who realized, "how enthusiastic I am and how motivated I can be when I have a cause."

Between the time she applied and the time she was interviewed by Orr, Malin kept busy researching the independence issue back to 1970. She concluded that the delay of independence a year with a study being done on the issue this year was the best approach. She says the more reading she did, "the more enthused" she got about it.

Malin's enthusiasm is apparent as she speaks of her hopes for her new position. She says although she has yet to meet with Dr. David Rice, ISUE President, and hear his views, she does have ideas of what she hopes her position to be.

"My idea would be to go to the department heads, talk to them and ask them what they think the board of incorporators should do, ask them what they think my role is and how I can keep in a two-way communication with them and myself. I would also like to sit in on all the major business clubs, fraternities, sororities, student activities, at least one of their monthly meetings."

"I'd of course tell them ahead of time, I want to be in your meeting this time so be prepared and ask me what you want to ask me," she said.

Malin added, "after an official meeting, if they have anything they want to say to me, I have a telephone and I'm free. I really want to be that open. I don't want to be isolated from them at all."

Because Malin is 30-years-old, is married and has a daughter some people have questioned her ability to communicate with the students, but those that know her agree there will be no problem.

Greg Hall, the only ISUE student to ever serve on the ISU board of trustees, said, "I think she's going to do a really good job. I'm really pleased with the selection."



ISUE junior Nancy Malin

Malin herself believes she communicates well with other students. "As far as not being part of the students, I don't believe that. I've tried real hard since I came back to school not to alienate myself. So I wear jeans, tennis shoes and sportsocks, whatever just to be part of the crowd...other than they're comfortable," she laughed.

"So I don't think they should think of me as a peer. I want to feel a part of them, and I think I do that pretty well. To most of the people that I've been in class with, I'm just part of the gang. I want to be like that."

She added that from another point of view, the ten years of experience she has gained in the business world will aid her in handling herself in many situations. She says when younger she would not have had this experience.

Nancy explains that after graduating from Castle High School, she attended ISUE as a communications major for a year and a half. After this time she left school and went to work as a medical secretary for a physician for seven years. She then worked in advertising for Keller Crescent for a year and a half. Currently she works for The Flower Shop during the holidays.

She returned to ISUE two years ago, and has become involved with the Personnel Club, of which she is president. She says the Personnel Club is an important aspect of public relations, the field she hopes to pursue after graduation. She believes her ability to communicate would be an asset in such an occupation, but she adds she is always open to other options.

She is also active in her creative writing classes. She has had some work published in the campus literary magazine, the *Aerie*. She also had three poems in the readers theatre during the university's women's celebration.

Outside of school, her hobbies include needlework, and swimming, boating and skiing with her husband, Gary. Mr. Malin graduated from the University of Evansville and is a pharmaceutical medical representative. They have been married seven years and have a one-year-old daughter, Cassie.

# Independence support

Continued from page 1

believes chances for independence are "good."

The sole student board position, filled by ISUE junior Nancy Malin, has held the most interest for ISUE students.

Eleven students applied for the position, although their names are being kept confidential. Six names of the eleven were presented to Orr, and he chose two whom he personally interviewed.

The Student Government Association was responsible for taking student applications and conducting interviews which included questions about the Indiana higher education system, ISUE and the students themselves.

According to Ed White, SGA president, important qualities SGA members looked for were, "how the candidate related to other people, how they presented themselves and how they spoke."

According to Dr. David Rice, ISUE President, the entire selection process was left up to SGA. The president's office did suggest that procedures followed should be the same as the legislature's for choosing a board of trustees.

White said he was pleased with Orr's selection. "She (Malin) came to the meeting prepared. She researched the independence issue, knew the issue and knew what she was getting into," he said. "She speaks clearly and she speaks exactly what she thinks."

According to Whitaker, Orr saw Malin as the best choice because "over all with her maturity and background" she could contribute the most.

"Gov. Orr was very impressed when he had spoken to her," Whitaker said.

Malin, who said she was "ecstatic" about being appointed, sees her role not as a student advocate, but as the channel through which student and faculty opinions will reach board meetings.

Regarding Orr's question of what she thought the role of student board member would be, Malin said, "I told him that I thought it was an equal position with other board members, but I thought I had a little bit more responsibility than some of the

other board members because I would be expected to have a lot of background on ISUE." She expressed her belief that as a student she will be expected to have more insight into the campus.

She added that it may be hard for her to overcome the "student title" and be an equal member.

Pruis has stated that each member will be an "equal" and "full-fledged" member though.

Other board members include ISUE graduate Walter Brunton of Mt. Vernon, president of Posey County National Bank.

Also appointed are Percy Clark of Indianapolis, superintendent of the Metropolitan School District of Lawrence, and Jack Johnson of Terre Haute, who has taught classes at ISUE and was a political science professor at ISU. He is a former administrator of Columbia and Hofstra Universities, both in New York.

Orr is currently in the process of composing a resource panel of seven to eight experts who will assist the incorporators in researching the issues and serve as a sounding board.

Whitaker said Orr will be "actively involved in monitoring the situation."

"Needless to say this has been a dream of his for a long time," he said.

## Employment

### Summer

### Opportunities

Many \$\$ easily earned. See demonstration and interviewing in UC 118, 10 am and 2 pm on April 18.

Fire Home Safety

812-838-0535

# Elections

Continued from page 1

The board justifies not publishing the final vote tabulation by saying they have "unanimously agreed in order to prevent any embarrassment or ill feelings among candidates and or friends, the results would remain confidential."

The board also defended the location of the voting table in the UC Lounge, with campaign material in sight, by saying they interpret the "immediate vicinity" to include only the "general area

around the election table." The board considers the UC Lounge as "an excellent place for candidates to take advantage of during the election periods because many students travel in and out of the snack bar and are constantly exposed to advertising."

Charges that the word "IMPACT" placed on ballots was advertising in behalf of a select group of candidates have been denied by the election board. The board maintains that IMPACT, as represented on the ballot, "is a political party, which is not only

allowed by Indiana State University Evansville, but by the United States Constitution."

According to Morgan, his complaint to the election board was called for and that "a lot of other people observed" the discrepancies cited in his complaint about the electoral process. He added that "I'm satisfied that everything has been explained" by the election board. Other students appear not to be satisfied with the board's explanation but are not willing to make any official complaints.

## ISUE PLACEMENT SERVICES

JOB	DESCRIPTION	NUMBER
Sales Person	For this north side job it would be helpful if you have some video equipment knowledge but is not necessary.	260
News Reporter	Some news reporting experience preferred for this radio job in Evansville.	261
Preschool Nursery	Help in a preschool nursery on Sunday mornings on the east side.	262
Night Auditor	One part time and one full time job available. You will be doing accounting work at a local hotel.	263

For further information on these jobs and other job listings see the Placement Office between the hours of 8:00 a.m. and 4:00 p.m. on Monday through Friday in UC 208.