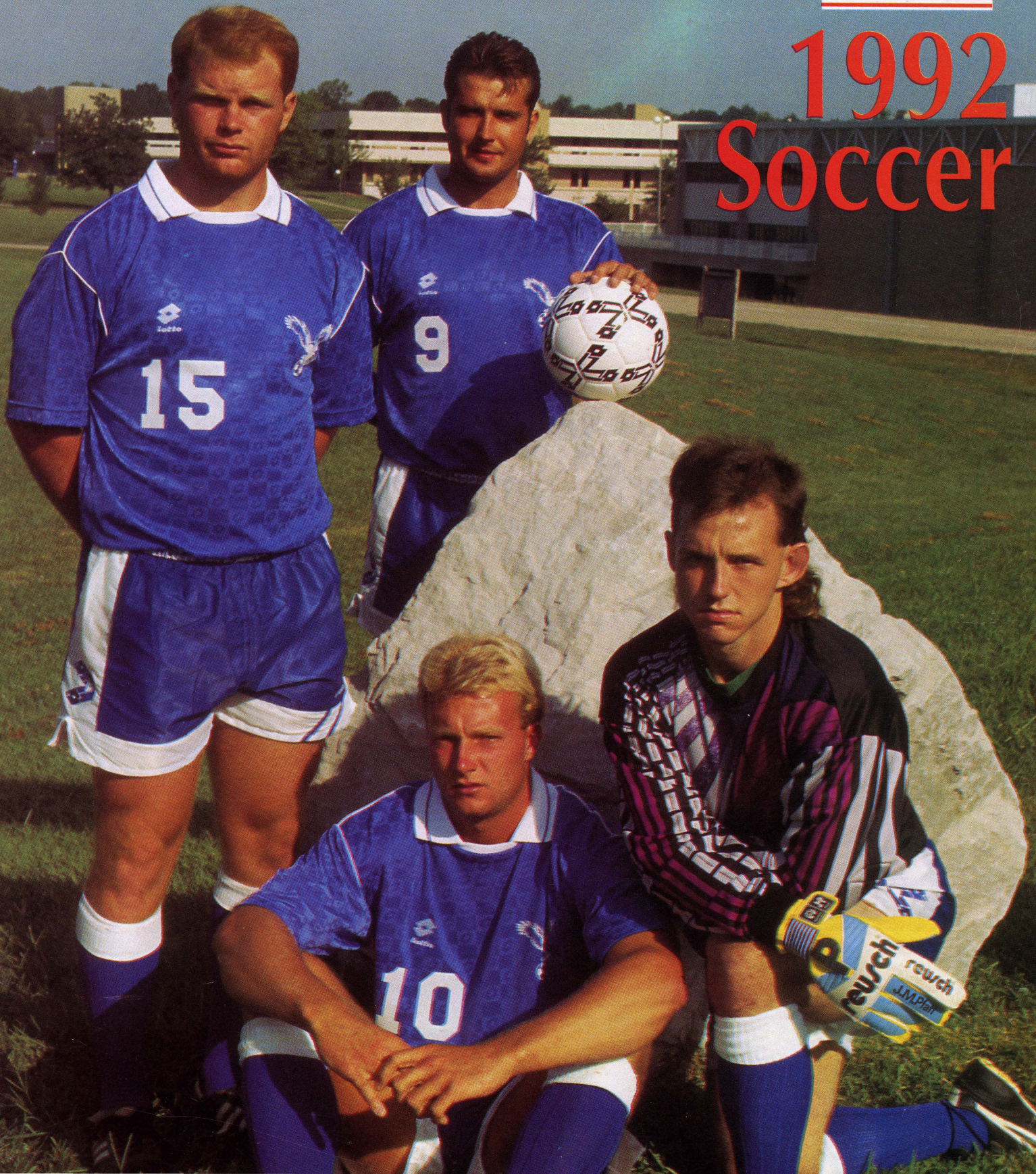




1992 Soccer



Old National Bank presents a crash course in surviving college crises!

Old National's College Survival Kit has the answers for solving the money crises you'll face in college. With free checking and other benefits, it makes paying for anything from books to burgers a real breeze.

You see, it's the complete financial package put together specifically for the college crowd.



CRISIS #1

A little cash, lots of books

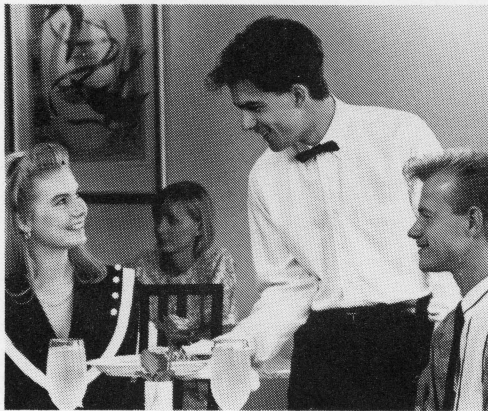
It lets you write unlimited checks with no minimum balance. The first 50 checks are free. And overdraft protection* can be included—so a mistake won't cost you embarrassment or a fee.

You get a free MoneyMover card for quick access to cash anytime. Almost anywhere. On campus



CRISIS #4

Quick cash late at night



CRISIS #2

When the dinner date gets expensive



CRISIS #3 Last-minute party clothes

or off. And there's a Visa or MasterCard with your name on it, and a \$500 credit line* to boot.

So make it easy on yourself. Apply for Collegiate Checking at any Old National Bank office today. And pass your crash course in surviving a college crisis.

*Subject to credit approval. Additionally, for the \$500 credit line, Freshmen and Sophomores need a co-signer, while Juniors and Seniors with a 3.0 or above G.P.A. from a four-year accredited college do not.

YOUR BANK FOR LIFE  **OLD NATIONAL BANK**
MEMBER OLD NATIONAL BANCORP Member FDIC



USI Quick Facts

LOCATION.....Evansville, Ind.
 FOUNDED.....1965
 ENROLLMENT.....7,021 (Fall 1991)
 NICKNAME.....Screaming Eagles
 COLORS.....Red, White, Blue
 SURFACE.....Natural Grass
 FIELD SIZE.....120 X 75
 CONFERENCE.....Independent
 AFFILIATION.....NCAA I
 1991 RECORD.....13-7-3 (NCAA II)
 1991 GLVC RECORD/FINISH.....5-0-2/First (NCAA II)
 LETTERWINNERS RETURNING/LOST.....8/3
 PRESIDENT.....David L.Rice
 VICE PRESIDENT STUDENT AFFAIRS/
 DIRECTOR OF ATHLETICS.....Donald Bennett
 FACULTY REPRESENTATIVE.....Charles Bertram
 HEAD COACH.....Tony Colavecchia
 RECORD AT USI.....57-26-6 (.674)
 CAREER RECORD.....57-26-6 (.674)
 ASSISTANT COACHES.....Robert Downs
 Brent Churchill
 ACADEMIC ADVISOR.....Jim Brown
 ATHLETIC TRAINER.....Chris Diaz

Important Telephone Numbers

TONY COLAVECCHIA.....O-(812) 464-1946
 H-(812) 476-1556
 DONALD BENNETT.....O-(812) 464-1846
 CHRIS DIAZ.....O-(812) 464-1955
 RAY SIMMONS.....O-(812) 465-1622
 H-(812) 985-0056
 FAX.....(812) 424-4910

1992 Soccer Schedule

DATE	OPPONENT	TIME
Mon., September 7	Memphis State	2:00 p.m.
QUINCY COLLEGE TOURNAMENT		
Sat., September 12	USI vs. Wisconsin-Green Bay	4:00 p.m.
Sun., September 13	Quincy vs. Valparaiso USI vs. Valparaiso Quincy vs. Wisconsin-Green Bay	6:00 p.m. 11:00 a.m. 1:00 p.m.
WED., SEPTEMBER 16	XAVIER	7:00 P.M.
Fri., September 18	Vanderbilt	7:00 p.m.
SUN., SEPTEMBER 20	WESTERN ILLINOIS	2:00 P.M.
Wed., September 23	Wright State	3:00 p.m.
SAT., SEPTEMBER 26	ALABAMA A&M	2:00 P.M.
SUN., SEPTEMBER 27	SOUTHWEST MISSOURI STATE	12:00 P.M.
Tues., September 29	Western Kentucky	7:00 p.m.

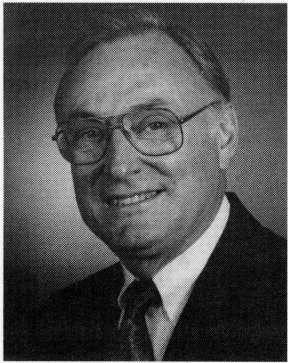
RADISSON INN/KENNY KENT TOYOTA TOURNAMENT		
FRI., OCTOBER 2	LINDSEY WILSON VS. MISSOURI-KANSAS CITY	5:30 P.M.
	USI VS. ARKANSAS-LITTLE ROCK	8:00 P.M.
SAT., OCTOBER 3	ARKANSAS-LITTLE ROCK VS. LINDSEY WILSON	5:30 P.M.
	USI VS. MISSOURI-KANSAS CITY	8:00 P.M.
Sat., October 10	SIU at Edwardsville	7:30 p.m.
Wed., October 4	Louisville	7:00 p.m.
SAT., OCTOBER 17	WISCONSIN-PARKSIDE	2:00 P.M.
MON., OCTOBER 9	ORAL ROBERTS	7:00 P.M.
Wed., October 28	Cincinnati	7:00 p.m.
Fri., October 30	Bradley	3:00 p.m.
Sun., November 1	Illinois State	1:00 p.m.
Sat., November 7	Eastern Illinois	12:00 p.m.

HOME GAMES IN BOLD AND CAPS



Official supplier of USI Soccer



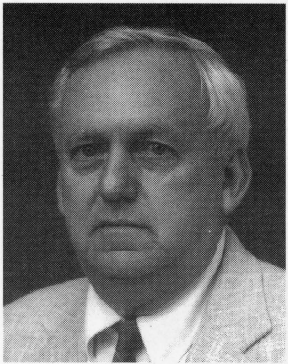


A Welcome From President David L. Rice

Welcome to the University of Southern Indiana and the inaugural season of NCAA Division I Screaming Eagles soccer. The University and the team have been looking forward to opening Division I play, which promises excitement for USI and our fans. Our men's and women's athletic programs, which grow each year, provide the opportunity for our student athletes to demonstrate their considerable skills in intercollegiate competition, while giving those of us who are spectators limitless opportunities for entertainment and fellowship.

Thank you for the support you give the University and its athletic program, but most importantly, to its student athletes whose achievements we cheer in and out of the classroom.

USI Athletic Staff



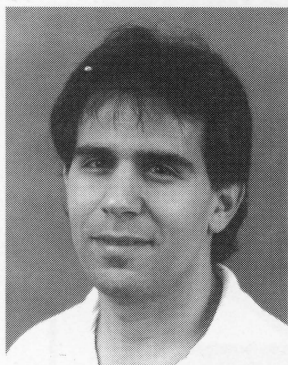
Donald Bennett,
Vice President Student Affairs/
Director of Athletics



Charles Bertram
Faculty Representative



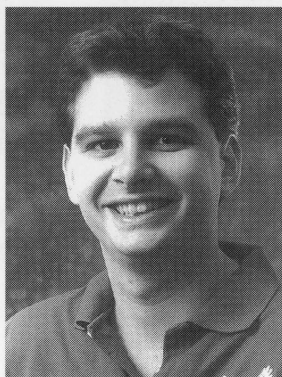
Jim Brown
Academic Advisor



Chris Diaz
Head Athletic Trainer



Lois Stevens
Equipment Manager



Ray Simmons
Sports Information Director



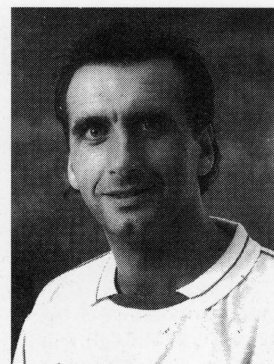
Head Coach Tony Colavecchia

Starting his fifth season, Head Coach Tony Colavecchia has brought a new enthusiasm to the USI soccer program. In four years, he has compiled a 57-26-6 record (.674 winning percentage), been named Great Lakes Valley Conference Coach-of-the-Year three times, named the Met-Life 1989 Great Lakes Regional Coach-of-the-Year, and led the team to four straight GLVC titles.

Colavecchia came to USI after a four-year association with the University of Evansville. The Skegness, England, native was the director of athletics at UE's British campus, Harlaxton College. After two years, Colavecchia was transferred to Evansville where he served as an assistant to UE Head Coach Fred Schmalz. Colavecchia credits Schmalz with influencing his career. He feels that coaching at UE helped him gain the confidence to direct the USI program.

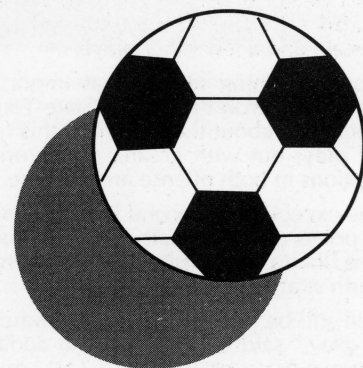
The 33-year-old coach holds a F.A. coaching license and a United States Soccer Federation B license. He has served as an instructor of the U.S.S.F. Region II Olympic Development camps, and is recognized as a state coach for both boys and girls.

Colavecchia played professionally and as a collegiate midfielder in England. He graduated from St. Paul's College, Cheetenham, England, in 1980 with a degree in physical education.



THE COLAVECCHIA YEARS AT USI

Year	Record	
1988	14-6-0	GLVC Championship GLVC Coach-of-the-Year
1989	15-8-1	GLVC Championship GLVC Coach-of-the-Year MET-Life Great Lakes Regional Coach-of-the-Year
1990	15-5-2	GLVC Championship GLVC Coach-of-the-Year
1991	13-7-3	Nationally Ranked 19th GLVC Championship
4 Years	57-26-6	(.674 Winning Percentage)



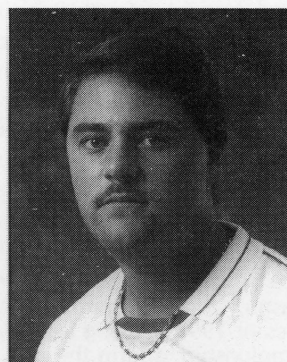
ASSISTANT COACH ROBERT DOWNS

Robert Downs joins USI as an assistant coach after spending 1991 at Earlham College in Richmond. Prior to coaching at Earlham, the Florida native was an assistant coach at Western Kentucky University in 1989-90, a staff coach at the Kentucky Olympic Development Program, and the assistant director of the WKU soccer camps. On the

field, Downs played for Robert E. Lee High School in Jacksonville, Fla., before playing for Earlham from 1985-88. While at Earlham, Downs was the co-captain in 1988 and All-Conference in 1988 and 1987.

Downs received a master's degree in physical education from WKU and a bachelor's degree in history from Earlham. He also holds a United States Soccer Federation A coaching license.

Head Coach Tony Colavecchia said, "Downs brings a wealth of experience to our soccer program. His main responsibility at USI will be coaching the goalkeepers and overseeing fitness training. Downs is a soccer fanatic who will stir enthusiasm for the season."



ASSISTANT COACH BRENT CHURCHILL

Former USI player Brent Churchill enters his first season as an assistant coach after working with the team the last two seasons as a student assistant coach/manager.

Churchill, who was awarded the Most Dedicated Award in the 1987, 1988, 1989, and 1990 seasons, is active in Evansville youth soccer clubs. He is a graduate of Castle High School and will graduate from USI in December.

Head Coach Tony Colavecchia said, "Churchill has been a valuable member of the coaching staff as a student assistant for the past three seasons. His appetite for the game and understanding of player needs has influenced many soccer careers at USI. He has been a part of the Evansville select and high school programs over the past four seasons, and has been instrumental in recruiting players for the USI soccer program."



USI Heading Into Division I

The 1992 soccer season will be an historic one for the University of Southern Indiana. After three years of planning and with the continued support from the community, the USI Screaming Eagles soccer team will compete at the NCAA Division I level this year.

In 1988, while competing in Division II, USI hired Head Coach Tony Colavecchia. He has led the Screaming Eagles to a 57-26-6 (.674 winning percentage) record, four straight Great Lakes Valley Conference championships, and one top 20 finish nationally.

Colavecchia said, "This has been a building year for our athletic department. I feel the school has shown a great interest in and commitment to athletics.

"The field renovation is a major commitment by the University toward the soccer program. The new playing surface will encourage quality play, and help the program in recruiting and scheduling."

With the Eagles in Division I, the fans will continue to enjoy good soccer at USI. Colavecchia said, "We are not going to overhaul the team just because we are going to Division I. It is still the same game and still the same team with the exception of Eric Schoenstien and a few other players.

"The spring training session was important because we finished undefeated and won the Illinois State Tournament. The players are now optimistic about their chances this fall. We won't change our style of play; but with greater depth on the team, we will have more options in both offense and defense."

With the exception of second leading scorer Eric Schoenstien, who had 19 points on eight goals and three assists, the Eagles will return the same lineup that finished 13-7-3 overall and won the GLVC for the fourth straight time.

"We will still be playing the long forward passes, which is a direct style of play," said Colavecchia. "In addition we must concentrate and improve our overall defense. Last season on occasions that was one of our weaknesses. Also, the recruiting has been very successful with two players coming from England, two from South Bend, Ind., one from Evansville, and one from Newburgh, Ind."

The Eagles will play only eight home games this season, with 12 games on the road. Colavecchia said, "Overall, our schedule is realistic, despite playing 60 percent of our games on the road. We are very capable of having a winning season, barring injuries."

FORWARDS

The Eagles will return the two starting forwards from last year's front line, 6-2 senior Shane Gibson and 5-11 sophomore Justin Igleheart.

Gibson led the Eagles in scoring last season, with 36 points on 15 goals and six assists. In the last six games of 1991, Gibson scored 12 goals to lead USI to the GLVC championship, and in the past two seasons, has 81 points on 32 goals and 17 assists in 41 games. Igleheart missed five games in the middle of his freshman season due to a knee injury, but finished tied for second in scoring on the team with 19 points on seven goals and five assists. Igleheart complemented Gibson well in the final six games with three goals of his own.

Joining Gibson and Igleheart on the front line will be Greg Carroll, a 5-11 freshman. Carroll played for Riley High School in South Bend, Ind. and had 30 goals as a junior and 25 goals as a senior. Carroll also played for the Indiana State Olympic Development team and is a member of the North Regional team.

After having a good spring, Craig Austill, a 6-1 forward, also will be in the hunt for a position in the lineup. Austill had a rough fall with ankle injuries, but played in ten games and had three points on one goal and one assist.

MIDFIELD

The play in the midfield will be improved over last year with the return of John Hamilton, a 5-8 sophomore, and Sean Helliwell, a 5-10 sophomore. Both were redshirted with injuries in 1991.

Also returning in the midfield is Travis Marx, a 5-11 senior three-year All-GLVC, two time All-Region, Academic All-GLVC, and the third leading scorer on the team. A four-year starter, Marx, who was voted the Most Dedicated Player in 1991 by his teammates, had 17 points on four goals and nine assists, and was only one of two players to play and start in every game in 1991.

Mike Wagner, a 5-7 sophomore, who saw action last season both as a midfielder and a back, will again come off the bench this season. Wagner filled in last season when the injuries plagued the Eagles, playing in 18 games, starting six.

Two freshmen will see action in the midfield. They are 5-11 Cary Henry and 5-10 Brad Hobgood. Henry, a graduate of Castle High School in Newburgh, Ind., was a teammate of forward Greg Carroll's on the Indiana State Olympic Development team. Hobgood was All-City last season for Reitz High School in Evansville and helped lead them into the state tournament scoring 15 goals and handing out 21 assists.

BACKS

When you talk about the USI backs, you have to talk about 6-0 junior Dean Doughty, the heart and soul of the Eagles. For the past two seasons, he has been voted the team's Most Valuable Player, and was All-GLVC and All-Region in 1991.

Doughty directs the defense from the sweeper position, but is a dangerous ball handler. He was able to push the ball up and score one goal and give five assists last season.

Joining him in the back is All-GLVC performer Mark Schlachter, a 6-0 junior, who played and started in all 23 games last season with Marx. Wes Wilhite, a 6-0 junior, will be on the other side of the field, but also could see action at a wide midfield position. Wilhite played in all 23 games, starting 22, and had five points on one goal and three assists.

Also returning at one of the back positions is 5-10 senior Brad Schultheis, who was All-GLVC as a freshman in 1989 and played in 21 games, starting 20 last season. He also had five points on one goal and three assists.

Fighting to get into the starting lineup is 6-0 sophomore back Keith Barnett. Barnett was hampered early last season with a knee injury, but came back to fill in for injured players and played well in six games, starting all six.

Freshmen looking to challenge the upperclassmen for a place in the lineup will be Dean Mills, a 5-10 native of Louth, England, who was captain of the North Lincolnshire College team in 1991; Christian Thorne, a 5-11 native of Gunthrope, England, who was the captain of the Repton School, which is considered one of England's top soccer schools; and Kevin Warner, a 5-10 graduate of John Adams High School in South Bend, Ind. and a member of the Indiana State Olympic Development team.

USI also has one junior college transfer in 6-3 junior Keith Anderson. Anderson was a teammate of USI goalkeeper Jim Dionne at the College of Lake County (Ill.) and was All-Region IV in 1989.

GOALKEEPERS

Leading the way between the posts for USI is 5-10 senior Jim Dionne. Dionne joined Doughty on the All-Region and All-GLVC teams in his first season at USI. He had a 0.92 Goals Against Average in 1,765 minutes with seven shutouts and 41 saves.

Larry Nohalty, a 5-11 junior, and Chad Harmon, 6-2 sophomore, will back Dionne up in goal and challenge for the starting role. Nohalty played in three games, starting two, and had a 1.29 GAA in 210 minutes. Harmon also played in three games, starting two, but had a 1.47 GAA in 245 minutes between the posts.



Back row, (left) Tony Colavecchia, head soccer coach, Bob Downs, assistant soccer coach, Craig Austill, Keith Barnett, Justin Igleheart, Keith Anderson, Brad Schultheis, Shane Gibson, Dean Doughty, Sean Helliwell, John Hamilton, Wesley Wilhite, Travis Marx, Mark Schlachter, and Brent Churchill, assistant coach. Front row, (left) Michael Wagner, Kevin Kowalewski, Kevin Warner, Cary Henry, Larry Nohalty, James Dionne, Chad Harmon, Dean Mills, Greg Carroll, Brad Hobgood, and Christian Thorne.

UNIVERSITY OF SOUTHERN INDIANA 1992 Screaming Eagles Soccer Roster

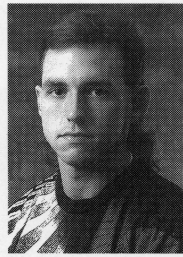
NO.	PLAYER	POS.	HT.	WGT.	CL.	HOMETOWN
GK	James Dionne	GK	5-10	170	Sr.	Waukegan, Ill.
GK	Larry Nohalty	GK	5-11	170	Jr.	Jeffersonville, Ind.
GK	Chad Harmon	GK	6-2	178	So.	Newburgh, Ind.
2	Wes Wilhite	B/M	6-0	170	Jr.	Evansville, Ind.
3	Dean Mills	B	5-10	154	Fr.	Louth, England
4	Dean Doughty	B	6-0	165	Jr.	Toronto, Canada
5	Mark Schlachter	B	6-0	160	Jr.	Evansville, Ind.
6	John Hamilton	M	5-8	166	So.	Skegness, England
7	Sean Helliwell	M	5-10	160	So.	Huddersfield, England
8	Justin Igleheart	F	5-11	165	So.	Evansville, Ind.
9	Shane Gibson	F	6-2	190	Sr.	Chesterfield, England
10	Travis Marx	M	5-11	160	Sr.	Evansville, Ind.
11	Greg Carroll	F	5-10	155	Fr.	South Bend, Ind.
12	Cary Henry	M	5-11	155	Fr.	Newburgh, Ind.
13	Kevin Warner	B	5-10	158	Fr.	Granger, Ind.
14	Christian Thorne	B	5-11	160	Fr.	Gunthrope, England
15	Brad Schultheis	B	5-10	175	Sr.	Evansville, Ind.
16	Keith Barnett	B	6-0	175	So.	Evansville, Ind.
18	Craig Austill	F	6-1	180	So.	Panama City, Fla.
19	Brad Hobgood	M	5-10	150	Fr.	Evansville, Ind.
20	Michael Wagner	M/B	5-7	145	So.	Newburgh, Ind.
21	Keith Anderson	B	6-3	165	Jr.	Libertyville, Ill.
22	Kevin Kowalewski	M	5-11	158	Fr.	South Bend, Ind.

Head Coach: Tony Colavecchia

Assistant Coaches: Robert Downs, Brent Churchill



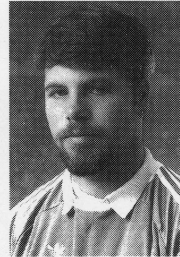
Meet The Screaming Eagles



Dionne



Harmon



Nohalty



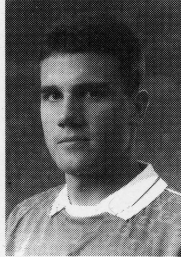
Wilhite



Mills



Doughty



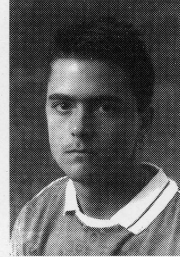
Schlachter



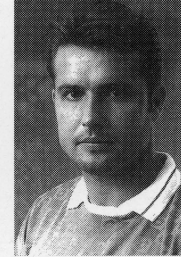
Hamilton



Helliwell



Igleheart



Gibson



Marx

Jim Dionne

GK

Goalkeeper5-10170SeniorWaukegan, Ill.
 Was named to the All-Central Region (NCAA II) and All-GLVC in 1991...had a 0.92 Goals Against Average, ranked first in the GLVC in his first season at USI, allowing only 18 goals in 1,765 minutes...a transfer to USI from the College of Lake County, where he won two letters in soccer...was named to the Junior College All-American team, won the Region A Player-of-the-Year, and the team's Most Valuable Player award at CLC 1990...Illinois Men's Select Team goalkeeper this past spring...attended Waukegan East High School where he won letters in soccer and volleyball...majoring in sociology.

Coach's Comment: "Had a hard time last year settling into our style of play and the level of competition. He is a hard worker and has become technically and tactically much better than at the start of last season. It will be very important for Dionne to make more critical saves to keep the team in contention against highly competitive teams."

	G/GS	SOC	G	SV	SHO	MIN.	GAA
1991	21/19	74	18	41	7	1765	0.92

Chad Harmon

GK

Goalkeeper6-2178SophomoreNewburgh, Ind.
 Played sparingly last season, but has a 1.47 Goals Against Average in 245 minutes...came to USI from Castle High School in Newburgh...had a 0.67 Goals Against Average and named honorable mention All-City and the Most Valuable Player at CHS as a senior...majoring in sociology.

Coach's Comment: "Harmon has grown leaps and bounds this year. He has good athletic ability and has worked hard to become tactically sound over the spring. With Harmon, our goalkeepers are as good as they have been since I came to USI."

	G/GS	SOC	G	SV	SHO	MIN.	GAA
1991	3/2	12	4	5	1	245	1.47

Larry Nohalty

GK

Goalkeeper5-11180JuniorJeffersonville, Ind.
 Saw action in three games last season, started two...had a 1.29 Goals Against Average in 210 minutes...saw limited action as a freshman in seven games, started three, as the number two goalkeeper...had a 1.48 Goals Against Average and combined with Matt Blauvelt on two shutouts in 1990...had a 32-9 record with a 0.72 GAA and 23 shutouts at Holy Cross High School in Louisville, Ky...majoring in business administration.

Coach's Comment: "Worked very hard during the spring season and the best thing he did was to get involved in the youth programs as a coach. By becoming a coach, he paid more attention to his own ability and work ethic. If he comes back this fall with a better work ethic, he will be very valuable to the program."

	G/GS	SOG	G	SV	SHO	MIN.	GAA
1990	7/3	16	7	9	0	425	1.48
1991	3/2	5	3	3	2	210	1.29
TOT.	10/5	21	10	10	11	635	1.42

Wes Wilhite

#2

Back.....6-0170JuniorEvansville, Ind.
 Was a mainstay in the USI backfield in 1991...played in 23 games and started 22...scored five points in 1991, on one goal and three assists...was named to the Academic All-GLVC team in 1990 and 1991...played in 17 games, starting six, and scored nine points on three goals and three assists last season...was a member of the Pizza Hut U14, U16, and U19 soccer programs which won state championships...was a member of the Indiana State Development teams in '85 and '86...majoring in communications.

Coach's Comment: "Wilhite was instrumental in holding us together defensively toward the end of last season. Took a leadership role and was a more confident player. We are looking forward to him operating in the wide position."

	G/GS	G	A	PTS.
1990	17/6	3	3	9
1991	23/22	1	3	5
TOT.	40/28	4	6	14

Dean Mills

#3

Back.....5-10154FreshmanLouth, England
 Played for Louth's United Senior team, the Lincolnshire School Boys and County School U19 teams in England...was the captain of the North Lincolnshire College team in 1991...majoring in physical education.

Coach's Comments: "Mills is a wide player who can operate in the mid-field. A quick player, he is a little impatient in defending but he will add composure, which we lacked in close games last season, to our defending line-up. He will be expected to overlap and complement the midfield."

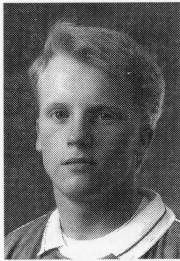
Dean Doughty

#4

Back.....6-0165JuniorOntario, Canada
 Played and started in 19 games last season despite being bothered by a broken nose early in the season...was a team co-captain, who was named to the All-Central Region and All-GLVC teams in 1991...also was named the USI Most Valuable Player (for the second straight year)...was the team leader in the backfield at the sweeper position, but had the ability to bring the ball forward into the attacking half...played and started in 20 games last year and had 10 points on five goals from the back sweeper position...major is electrical engineering.

Coach's Comment: "Doughty has been the most valuable player on the team the past two seasons. He gets better and better each year and is the most mature player we have along with Shane Gibson. Doughty has a good attitude on the field, and is a strong tackler and competitive in the air."

	G/GS	G	A	PTS.
1990	20/20	5	0	10
1991	19/19	1	5	7
TOT.	39/39	6	5	17



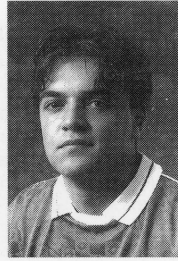
Carroll



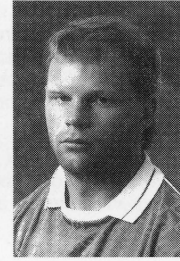
Henry



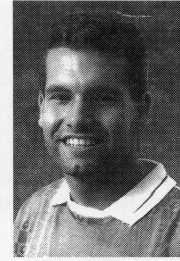
Warner



Thorne



Schultheis



Barnett



Austill



Hobgood



Wagner



Anderson

Mark Schlachter

#5

Back.....6-0160.....JuniorEvansville, Ind.
Became the most steady USI player in the backfield in 1991...started and played in all 23 games...was named to the All-GLVC team in 1991...started off slowly as a freshman in 1991, but matured as the season progressed, played in 16 games and started five...was a member of the Memorial High School teams that won state championships in 1989 and 1990...majoring in business administration.

Coach's Comment: "Schlachter has an enormous amount of potential and must be much bolder about getting forward. He likes to stay home in defense, but needs to express himself in the attacking third of the field because he has a good service of the ball."

	G/GS	G	A	PTS.
1990	16/5	0	1	1
1991	23/23	0	2	2
TOT.	39/28	0	3	3

John Hamilton

#6

Midfielder5-8166SophomoreSkegness, England
Was redshirted last season due to a shoulder injury...started 21 games for the Eagles in 1990, missed one due to injury...scored seven points on two goals and three assists as a freshman...participated in county soccer with Lincolnshire, England, Trillist and Norwich City...majoring in biology.

Coach's Comment: "Hamilton returns in much better shape than last fall. He is well complemented by the midfielders around him, but we have never really seen the best of Hamilton. We will see much more of him in defensive third this fall. He has a good shot and has a knack for free kicks."

	G/GS	G	A	PTS.
1990	21/21	2	3	7
1991	REDSHIRT			
TOT.	21/21	2	3	7

Sean Helliwell

#7

Midfielder5-10160SophomoreHuddersfield, England
Had to be redshirted last season due to a knee injury...transferred to USI from Liberty University, where he started in all 16 games and had eight points on four goals...while in England he was the captain of the West Yorkshire school's U19 team and the Huddersfield Technical College captain...majoring in physical education.

Coach's Comment: "Injured last year, Helliwell is the stitching in the seam of the team, which is critical to our makeup. He is a motivator and is capable of picking us up before the game is even started. Helliwell will be the field captain. His lack of pace is compensated by his ability to read the game and be at the right place at the right moment."

	G/GS	G	A	PTS.
1991	REDSHIRTED			

Justin Igleheart

#8

Forward5-11165SophomoreEvansville, Ind.
Scored 19 points on seven goals and five assists in 1991... played and started in 18 games... missed five games due to a knee injury, but came back to score three goals in the GLVC tournament at the end of the season...a red-shirt during the 1990 season, he is a local product of Reitz High School...was All-City, All-State, and State Finals All-Tournament in 1989...was North-South All-Star game Most Valuable Player in 1989 and was top high school goal scorer in Evansville in 1988 and was second in 1989...majoring in physical education.

Coach's Comment: "Igleheart had a very good spring and worked very effectively with Shane Gibson. Igleheart spent weeks recovering from an injury last season, but it was good to see him compete at full strength this spring. He is a natural goal scorer, who has improved receiving techniques and is prepared to take a knock from a back, but needs to be more aggressive."

	G/GS	G	A	PTS.
1991	18/18	7	5	19

Shane Gibson

#9

Forward6-2185SeniorChesterfield, England
Played and started in 20 games last season...scored 36 points on 15 goals and six assists...scored 12 goals in his last six games after splitting time between the forward and midfield positions due to injuries...was named to the All-GLVC and All-State team in 1991...named the GLVC Player-of-the-Year in 1990 and ranked tenth in the nation in scoring with 45 points on 17 goals and 11 assists...also named to the All-Central Region and All-GLVC teams...as a freshman, he was hampered midway through the season with an ankle injury, started and played in 16 games and had 12 points on four goals and four assists...leading scorer for the Chesterfield team which reached the United Kingdom National Finals...majoring in social work.

Coach's Comment: "Gibson had another impressive year. Gibson has improved all-around and can be looked to for leadership. A goal scorer, he is very good in the air and very aggressive. He will be our leader in the attacking third of the field, but will be heavily marked by the opposition, which should create chances for the other players. Gibson has been a pillar for our direct style of play."

	G/GS	G	A	PTS.
1989	16/16	4	4	12
1990	21/20	17	11	45
1991	20/20	15	6	36
TOT.	57/56	36	21	93

Travis Marx

#10

Forward5-1160SeniorEvansville, Ind.
Was named to the All-GLVC team for the third straight year and started in all 23 games last season...scored 17 points on four goals and nine assists in 1991...was Academic All-GLVC in 1990 and 1991...named to the All-Central Region in 1989 and 1990...third on the team in scoring with 19 points on six goals and seven assists in 1990...a walk-on player as a freshman, started 19 games, played in all 24 and was the team's second leading scorer with 22 points on six goals and ten assists, which ranked tenth in the nation...first team All-State in 1988...majoring in physical education.

Coach's Comment: "Arguably our best athlete and is a very good player technically with the ball. Marx had a good spring and is a very versatile midfielder, who can play the outside back when required. Marx, on his day, is as good as any wide player I've seen at the collegiate level. He needs more confidence and tactical awareness to become a polished performer."

	G/GS	G	A	PTS.
1989	24/19	6	10	22
1990	22/22	6	7	19
1991	20/20	4	9	17
TOT.	69/64	16	26	58

Greg Carroll

#11

Forward5-10155**Freshman****South Bend, Ind.**
 Played for James Whitcomb Riley High School in South Bend, Ind., where he had 25 goals and 20 assists last season as a senior in 1992...set a school and conference record for goals in a season with 30 as a junior in the spring of 1991...also had 15 assists as a junior... was named All-Conference and to the Olympic Development Program North Region and Indiana State Teams in 1992 ... was named to the All-State, All-Central Region (picked nationally by the NSCAA), ODP Region II, as an alternate, and the Indiana State teams in 1991. . . major is undecided.

Coach's Comments: "Carroll played for me on the ODP teams. He has a lot of potential and is very quick. A goal scorer by nature, his pace is a major attribute and will be charge hard for a starting position, either as a forward or a wide midfielder."

Cary Henry

#12

Midfielder5-1155**Freshman****Newburgh, Ind.**
 Played for Castle High School in Newburgh...a member of the Indiana State Olympic Development Program team in 1991 and 1992, and a member of the Indiana ODP South Regional team in 1986, 1988, 1989, 1990, and 1991...major is undecided.

Coach's Comments: "Henry was recruited as a midfielder, but played outside back for his club team, which has helped him. He is a good server of the ball and has a lot of potential. He needs to be quicker in making decisions, but will contend for a starting role as a freshman. Henry will need to learn to adjust to the pace of the college game. Although he is a good reader of the game, he needs to become much quicker in transition of the team's defending needs."

Kevin Warner

#13

Back5-1058**Freshman****Granger, Ind.**
 Played for John Adams High School in South Bend, Ind. as the team captain in 1992, was awarded the Defensive Most Valuable Player award for the Northern Indiana Soccer League and the JAHS MVP award in 1992...was named to the first team All-Conference in 1992, and to the second team All-State, second team All-Conference, and state cup All-Tournament teams in 1991...also was named the city tournament Most Valuable Player in 1991...has been a member of the Indiana State Olympic Development Program team from 1990 to 1992...majoring in business.

Coach's Comments: "A steady player, who is very calm and collected. His distribution out of the back is good and he reads the game well. Warner will be a strong contender for a starting role as a freshman, but needs to be more aggressive to succeed at this level."

Christian Thorne

#14

Back5-11 60**Freshman****Gunthrope, England**
 Has been a starter the past two years for Repton School, one of England's leading soccer-playing schools, and was the captain in 1991...was selected to play for the North Independent Schools team in 1992...major is undecided.

Coach's Comments: "For a big player, he is technically very good with the ball, and can serve the ball well. Thorne is a good reader of the game and is especially good in the air. He should add a little more stability to the defense, particularly out of the defending third when under pressure."

Brad Schultheis

#15

Back/Midfielder5-10185**Senior****Evansville, Ind.**
 Played in 21 games, started 20, and developed into one of USI's top back-field players last season...had one goal and three assists in 1991...played in 17 games, started six in 1990 with four points on one goal and two assists...as a freshman in 1990, he was named to the All-GLVC team, played in 22 games, started 19 and scored eight points on three goals and two assists...majoring in business administration.

Coach's Comment: Schultheis has worked his way into the lineup. The style we have complements his style. He will have to react in a very composed manner to have success against the quicker forwards we will see this year. He is much improved in the air and is a difficult player to play against because of his commitment. Schultheis needs to improve his distribution to become effective at the Division I level."

	G/GS	G	A	PTS.
1989	22/19	3	2	8
1990	17/6	1	2	4
1991	21/20	1	3	5
TOT.	60/45	5	7	17

Keith Barnett

#16

Back6-0175**Sophomore****Newburgh, Ind.**
 Saw action and started in only six games last season due to a pre-season knee injury, but when healthy, played a key role, filling in for injured players in 1991...had one assist in 1991...played locally for Memorial High School...was a member of the state championship teams in 1989 and 1990...majoring in civil engineering.

Coach's Comment: "Barnett did not get a lot of playing time last season, but when he did, he made an impact. He is a very strong player and very good in the air. Barnett has made giant strides and is very capable of playing against the high caliber target man. In order to find a slot in our counter attack line-up, Barnett needs to improve his distribution out of the back."

	G/GS	G	A	PTS.
1991	6/6	0	1	1

Craig Austill

#18

Forward6-1180**Sophomore****Panama City, Fla.**
 Despite suffering through an injury-plagued season, he played in ten games and started one...had two assists in 1991...played for Mosley High School in Panama City, where he earned three letters in soccer...while at MHS, he was named All-County three times, All-District twice, and honorable mention All-State once...was the team Most Valuable Player in 1990 and 1991 and had a career total of 30 goals and 28 assists at MHS...major is undecided.

Coach's Comment: Austill always has a good touch with the ball under pressure. He needs to improve his attitude toward being a little more aggressive, because he has a lot of potential. A very quiet player, who needs to become more vocal so his teammates recognize his off-the-ball movement."

	G/GS	G	A	PTS.
1991	10/1	0	2	2

Brad Hobgood

#19

Midfield5-10150**Freshman****Evansville, Ind.**
 Comes to USI from Reitz High School in Evansville...was named to the 1991 All-City team and helped lead RHS to the state tournament...had 51 points last season on 15 goals and 21 assists...also participated in basketball at RHS...majoring in business.

Coach's Comments: "Hobgood is a left-footed player who likes to get forward and can operate up front or at a wide midfield. He is a versatile player and will find that his role will probably be on the left side. Hobgood will have to work hard in the pre-season, but offers a lot of potential down the road."

Mike Wagner

#20

Back/Midfielder5-7145**Sophomore****Newburgh, Ind.**
 Saw action in 18 games, started six either as a back or as a midfielder...had one assist in the 18 games...won five letters at Castle High School in soccer and wrestling...was named to the second team All-City in 1989, honorable mention All-State in 1990, and named to the CHS Hall of Fame for soccer and wrestling...major is biology.

Coach's Comments: "Wagner is a utility player and a very versatile player who needs to be a simple player—with that he can be a very effective player for USI. He needs to improve getting into the opponent's third of the field. In addition, I feel I must spend more time developing his field awareness to complement his high work ethic."

	G/GS	G	A	PTS.
1991	18/6	0	1	1

Keith Anderson

#21

Back6-3165**Jr.****Libertyville, Ill.**
 Transferred to USI from the College of Lake County...played in 1989 and 1990 seasons for CLC and was second team All-Region IV in 1989...attended Libertyville High School and was All-Conference and All-Sectional in soccer...also participated in wrestling at LHS...majoring in communications.

Coach's Comment: "Anderson is a skillful defender, who has the ability to support the midfield and complement the attack. He also adds collegiate experience to our depth."

1991 Final Soccer Statistics

13-7-3 (GLVC 5-0-2)

GLVC Champions (4th Consecutive—1988-91)

Regionally Ranked—5th

PLAYER	G/GS	SH	SOG	G	AST	PTS
Shane Gibson, F	20/20	89	58	15	6	36
E. Schoenstein, M	23/21	57	37	8	3	19
J. Igleheart, F	18/18	61	32	7	5	19
Travis Marx, M	23/23	50	27	4	9	17
Dean Doughty, B	19/19	4	4	1	5	7
Sean Helliwell, M	5/5	8	2	2	1	5
Brad Schultheis, B	21/20	10	6	1	3	5
Wes Wilhite, M/B	23/22	12	6	1	3	5
B. Kitchens, M	21/18	7	2	1	2	4
Melvin Seitz, F	9/1	7	5	2	0	4
John Hamilton, M	5/5	11	4	1	1	3
Craig Austill, F	10/1	4	2	1	1	3
Mark Schlachter, B	23/23	4	1	0	2	2
Mike Wagner, M	18/6	3	0	0	1	1
Keith Barnett, B	6/6	0	0	0	1	1
Greg Titus, M	22/19	18	9	0	0	0
J.-M. Woodward, M	14/4	8	2	0	0	0
TEAM TOTALS:	23	353	197	45 %	43	133
OPP TEAM TOTALS:	23	155	91	25	18	68

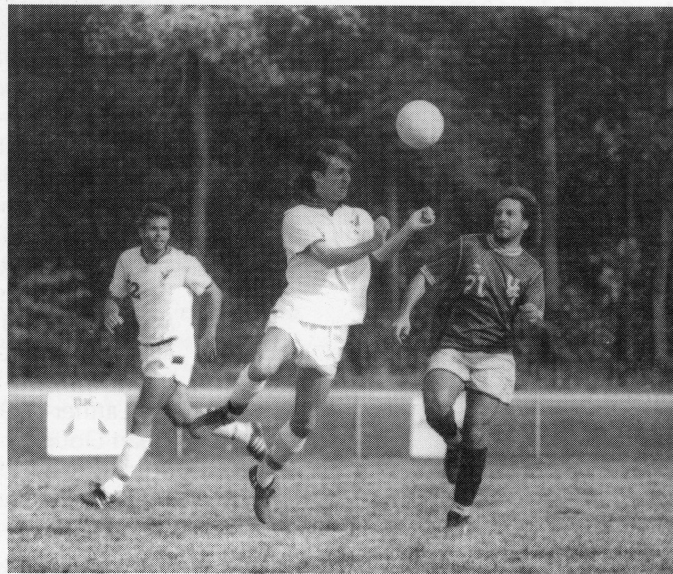
%-Includes an own goal against Gannon.

GOALKEEPING:

PLAYER	G/GS	SOG	GOALS	SV	SHO	MIN.	GA AVG.
Jim Dionne	21/19	74	18	41	7	1765	0.92
Larry Nohalty	3/2	5	3	2	1	210	1.29
Chad Harmon	3/2	12	4	5	1	245	1.47
USI TEAM TOTALS	23	91	25	48	9	2220	1.01
OPP. TEAM TOTALS	23	197	45	122	7	2220	1.82

SCORING BY PERIODS:

	1	2	OT	TOT.
USI	14	29	2	45
OPPONENTS	15	9	1	25



1990 & 1991 MVP Dean Doughty

1991 Game Results:

DATE	TEAM	SCORE	W/L/T	H/A/N	USI SCORERS
8-31-91	Mercyhurst	1-2	L	A	Igleheart
9-1-91	Gannon	2-0 (OT)	W	A	Gibson, (Gannon Own Goal)
9-8-91	DRAKE	2-3	L	H	Helliwell, Gibson
9-14-91	Oakland	0-3	L	A	
9-17-91	MISSOURI-ROLLA	3-2	W	H	Helliwell, Igleheart (2)
9-21-91	Lewis*#	1-0	W	A	Austill
9-22-91	St. Joseph's*	4-0	W	A	Hamilton, Marx (2), Schoenstein
9-25-91	Kentucky Wesleyan*	0-0 (OT)	T	A	
9-27-91	NORTHEAST MISSOURI	1-0	W	H	Kitchens
9-28-91	LONGWOOD	3-1	W	H	Gibson, Schoenstein, Igleheart
10-2-91	BELLARMINE*	2-2 (OT)	T	H	Schoenstein, Seitz
10-5-91	Missouri-Kansas City	0-0 (OT)	T	N	
10-6-91	Wisconsin-Parkside	0-2	L	N	
10-11-91	USC Spartanburg	0-3	L	A	
10-12-91	Cal. State-Chico	0-1 (OT)	L	N	
10-13-91	IUPUI Ft. Wayne*	5-0	W	H	Schoenstein (3), Marx, Schultheis
10-18-91	Northern Kentucky*	2-0	W	H	Schoenstein, Seitz
10-20-91	Indianapolis*	3-1	W	H	Gibson (2), Wilhite
10-26-91	MISSOURI SOUTHERN	4-0	W	H	Gibson (3), Schoenstein
10-30-91	ST. JOSEPH'S!	5-1	W	H	Gibson (3), Igleheart Doughty
10-2-91	NORTHERN KENTUCKY	3-1	W	H	Gibson (2), Marx
10-3-91	LEWIS!	4-0	W	H	Gibson (2), Igleheart (2)
11-9-91	Missouri-St. Louis	0-3	L	N	

*-GLVC GAMES, #-FORFEIT (Was a 2-1 loss to Lewis, but forfeited later)

!-GLVC TOURNAMENT (4 Consecutive GLVC Championships (9 in 12 Years)



Awards and Honors

ALL-AMERICAN

Stewart Dowds-1983

ALL-REGION

- Moulton Cato-1982, 1983, 1984
Michael Corday-1986
Kevin Larkin-1986
Andy McCulloch-1987, 1988
John Heerdink-1987
Kevin Swords-1988, 1989
Jamison Egler-1988
Eric Schoenstein-1988
Chris King-1989, 1990
Travis Marx-1989, 1990
Shane Gibson-1990
Dean Doughty-1991
Jim Dionne-1991

(All-Region players are also part of the All-State team)

ALL-STATE

- Jamison Egler-1989
Robert Bennett-1990
Dean Doughty-1990
Shane Gibson-1991
Travis Marx-1991

GLVC PLAYER OF THE YEAR

Shane Gibson-1990

ALL-GLVC

- Pete Poulson-1980
Moulton Cato- 1981, 1982, 1983, 1984
Stewart Dowds-1981, 1982, 1983, 1984
Troy Berkley-1982
Jim Hynd-1982
Michael Corday-1984, 1985, 1986
Greg Tassios-1984
Kevin Larkin-1985, 1986
Tim Koncki-1986
Andy McCulloch-1987, 1988
John Heerdink-1987, 1988
Kevin Swords-1987, 1988, 1989
Paul Kumar-1988
Eric Schoenstein-1988, 1990, 1991
Chris King-1988, 1989, 1990
Travis Marx-1989, 1990, 1991
Brad Schulthies-1989
Matt Blauvelt-1990
Robert Bennett-1990
Shane Gibson-1990, 1991
Joe Lattner-1990
Dean Doughty-1991
Jim Dionne-1991
Mark Schlachter-1991

MOST VALUABLE PLAYERS

- Michael Corday-1986 (Offensive)
Ken Veilands-1986 (Defensive)
John Heerdink-1988
Kevin Swords-1989
Dean Doughty-1990, 1991

MOST IMPROVED

- D.J. Rumpler-1986, 1988
Greg Frasier-1987
Melvin Seitz-1990
Mike Wagner-1991

MOST DEDICATED

- Brent Churchill-1987, 1988, 1989, 1990
Travis Marx-1991

CAPTAINS

- 1986-Michael Corday, Craig Kriska and Kevin Larkin
1987-Kevin Larkin, Kevin Swords, and John Heerdink
1988-John Heerdink and Kevin Swords
1989-Kevin Swords
1990-Robert Bennett, Shane Gibson, Chris King
1991-Shane Gibson, Dean Doughty, Eric Schoenstein

Screaming Eagles Records

TEAM RECORDS

- MOST WINS IN A SEASON.....15 (1989 & 1990)
MOST LOSSES IN A SEASON.....11 (1987)
MOST TIES IN A SEASON4 (1986)
HIGHEST WIN-LOSS PERCENTAGE15-3 (1983)
MOST CONSECUTIVE WINS8 (1983)
MOST CONSECUTIVE LOSSES4 (1981, 1987)
MOST CONSECUTIVE SHUTOUTS6 (1990)
LONGEST UNBEATEN STREAK12 (10/17/81 10/9/82)
MOST GOALS IN A SEASON.....71 (1990)
LEAST GOALS IN A SEASON21 (1981)
LEAST GOALS ALLOWED IN A SEASON.....2 (1983)
MOST SHUTOUTS IN A SEASON.....13 (1990)
MOST GOALS SCORED IN A GAME14 vs. Indianapolis (1982)
MOST GOALS CONCEDED IN A GAME8 vs. Eastern Ill. (1987)
GREATEST WINNING MARGIN14 vs. Indianapolis (1982)
GREATEST LOSING MARGIN8 vs. Eastern Ill. (1987)

INDIVIDUAL RECORDS

- MOST GOALS IN A GAME5 Michael Corday vs. St. Joseph's 1986
MOST GOALS IN A SEASON23 Michael Corday (1986)
MOST GOALS IN A CAREER.....63 Michael Corday (1983-86)
MOST ASSISTS IN A SEASON14 Chris King (1989) 14 Moulton Cato (1984)
MOST ASSISTS IN A CAREER.....52 Moulton Cato (1981-1984)
MOST SHUTOUTS IN A SEASON ..10 Matt Blauvelt (1990)
MOST SHUTOUTS IN A CAREER28 Matt Blauvelt (1987-90)
LOWEST GOALS AGAINST AVERAGE....0.70 Matt Blauvelt (1990)

(Minimum of 1,500 minutes)



Tournaments:

QUINCY COLLEGE TOURNAMENT

September 12-13 at Quincy Ill.

Quincy College.....Quincy, Ill.; 1,594 students; Independent; Head Coach Jack MacKenzie; Hawks; 1991 Overall Record 6-7-4.

Valparaiso University.....Valparaiso, Ind.; 4,000 students; Mid-Continent Conference...; Head Coach Mis Mrak; Crusaders; 1991 Overall Record 6-11-2

University of Wisconsin-Green Bay.....Green Bay, Wis.; 5,450 students; Mid-Continent Conference; Phoenix; Head Coach Dave Poggi; 1991 Overall Record 7-13.

USI/Kenny Kent Toyota Tournament October 2-3 at Strassweg Field

University of Arkansas-Little Rock.....Little Rock, Ark.; 11,300 students; Sun Belt Conference; Trojans; Head Coach Roy Stanley; 1991 Overall Record 8-12.

Lindsey Wilson College.....Columbia, Ky.; 1,000 students; NAIA Region 7; Blue Raiders; Head Coach Ray Wells; 1991 Overall Record 15-3.

University of Missouri-Kansas City.....Kansas City, Mo., 12,000 students; Independent; Kangaroos; Head Coach Kelly Ross; 1991 Overall Record 4-10-2.

Regular Season Games

September 7 at Memphis, Tenn.

Memphis State University.....Memphis, Tenn.; 22,500 students; Great Midwest Conference; Tigers; Head Coach Chris Bartels; 1991 Overall Record 7-9-2.

September 16 at Strassweg Field

Xavier University.....Cincinnati, Ohio; 6,800 students; Midwestern Collegiate Conference; Musketeers; Head Coach Jack Hermans; 1991 Overall Record 6-11-4.

September 18 at Nashville, Tenn.

Vanderbilt University.....Nashville, Tenn., 15,399 students; Independent; Commodores; Head Coach Randy Johnson, 1991 Overall Record 7-10-2.

September 20 at Strassweg Field

Western Illinois University.....Macomb, Ill; 11,000 students; Mid-Continent Conference; Leathernecks; Head Coach John MacKenzie; 1991 Overall Record 8-10.

September 23 at Dayton, Ohio

Wright State University...Dayton, Ohio; 17,000 students; Mid-Continent Conference; Raiders; Head Coach Greg Andrulis; 1991 Overall Record 10-9-1.

September 26 at Strassweg Field

Alabama A&M University.....Normal, Ala; 5,000 students Independent...Bulldogs...Head Coach Salah Yousif; 1991 Overall Record 15-4-1.

September 27 at Strassweg Field

Southwest Missouri State University.....Springfield, Mo.; 17,500 students; Missouri Valley Conference; Bears; Head Coach TBA; 1991 Overall Record 9-10.

September 29 at Bowling Green, Ky.

Western Kentucky University.....Bowling Green, Ky.; 14,788 students; Hilltoppers; Head Coach David Holmes; 1991 Overall Record 11-8-1.

October 10 at Edwardsville, Ill.

Southern Illinois University at Edwardsville.....Edwardsville, Ill.; 10,200 students; Independent; Cougars; Head Coach Ed Huneke; 1991 Overall Record 9-11.

October 14 at Louisville, Ky.

University of Louisville.....Louisville, Ky.; 23,600 students; Metro Conference; Cardinals; Head Coach Claudio Maldonado; 1991 Overall Record 5-11-2.

October 17 at Strassweg Field

University of Wisconsin-Parkside.....Kenosha, Wis.; 5,500 students; NCAA II Independent; Rangers; Head Coach Rick Kilps; 1991 Overall Record 14-2-1.

October 19 at Strassweg Field

Oral Roberts University.....Tulsa, Okla.; 4,100 students; Independent; Titans; Head Coach Doug Techanchuk; 1991 Overall Record 11-7-1.

October 28 at Cincinnati, Ohio

University of Cincinnati.....Cincinnati, Ohio; 36,000 students; Great Midwest Conference; Bearcats; Head Coach Bob Muro; 1991 Overall Record 9-12-1.

October 20 at Peoria, Ill.

Bradley University.....Peoria, Ill.; 5,000 students; Missouri Valley Conference; Braves; Head Coach Jerry Crabtree; 1991 Overall Record 6-14.

November 1 at Normal, Ill.

Illinois State University.....Normal, Ill.; 22,694 students; Missouri Valley Conference; Redbirds; Head Coach Tim Carter; 1991 Overall Record 10-12.

November 7 at Charleston, Ill.

Eastern Illinois University.....Charleston, Ill.; 10,000 students; Mid-Continent Conference; Panthers; Head Coach Cizo Mosnia; 1991 Overall Record 9-9-1.



Year-By-Year

1979 (6-6-1)

Grace College	W	2-0
Washington Univ. (Mo.)	L	0-2
at Louisville	W	1-0
Alabama-Huntsville	T	1-1
Purdue	W	1-0
Chicago-Circle	L	1-2
at Sangamon State	L	0-2
Bellarmine	W	2-0
at Wheaton College	W	2-0
at Missouri-St. Louis	L	0-1
at DePauw	W	1-0
at McKendree	L	0-5
at Wright State	L	0-1

1980 (11-7-2)

GLVC CHAMPIONS

at Wisconsin-Parkside	L	1-2
at Wisconsin-Green Bay	W	1-0
Kentucky Wesleyan	W	5-1
North Texas State (at EIU)	L	0-3
Lewis (at EIU Tourney)	W	3-0
at Western Illinois	L	0-1
Oakland	T	0-0
DePauw	W	3-1
Marquette	W	Forfeit
at Vanderbilt	W	1-0
at Washington	L	1-2
Wright State	W	1-0
Sangamon State	T	0-0
at Alabama A&M	L	0-4
at Alabama-Huntsville	L	0-2
McKendree	W	2-1
Indiana	L	0-1
St. Joseph's	W	10-0
Lewis	W	4-0
Bellarmine	W	3-1

1981 (8-9)

GLVC CHAMPIONS

at Washington Univ. (Mo.)	L	0-1
Vanderbilt	L	0-2
Bellarmine	W	5-2
at Cleveland State	L	0-1
at Kentucky Wesleyan	L	1-2
Southeast Missouri (at UMSL)	W	2-0
at Missouri-St. Louis	L	0-1
at Indiana	L	1-7
Western Illinois	L	1-3
Eastern Illinois	L	0-1
Wisconsin-Parkside (at Lewis)	W	2-0
Oakland (at Lewis)	W	1-0
Quincy	L	0-4
at Wheaton	W	4-0
Bellarmine (at KWC)	W	3-1
at Kentucky Wesleyan	W	3-1
Lewis (at KWC)	W	1-0

1982 (11-3-2)

GLVC CHAMPIONSHIP

Harris Stowe	W	3-0
at Vanderbilt	W	2-0
Wisconsin-Parkside (at Oakland)	T	1-1
at Oakland	T	0-0
at Bellarmine	W	3-0
at Wright State	W	2-0
at Xavier	W	1-0
Indianapolis	W	14-0
at Missouri-Rolla	L	1-2
Southeast Missouri	W	3-0
Kentucky Wesleyan	W	3-2
Lewis	W	3-1
Georgia State	W	3-2
Purdue	W	3-0
at Eastern Illinois	L	1-4
Indiana	L	0-1

1983 (13-3)

GLVC CHAMPIONS

Vanderbilt	W	4-0
at Harris Stowe	W	3-1
at Southeast Missouri	L	0-3
Bellarmine	W	7-0
at Georgia State	W	2-1
Emory (at GSU)	W	2-1
Wright State	W	3-1
at Indianapolis	W	7-0
Missouri-Rolla	W	3-0
at Lewis	W	2-0
at Purdue	W	4-0
at Eastern Illinois	L	1-2
Northeast Missouri	W	2-0
at Kentucky Wesleyan	W	1-0
Northern Kentucky	W	3-0
Oakland	L	1-3

1984 (12-5-2)

GLVC CHAMPIONS

Loyola	W	5-0
IUPU Ft. Wayne	W	6-0
Kentucky Wesleyan	L	0-1
at Vanderbilt	W	1-0
at Bellarmine	L	2-3
Harris Stowe	W	3-0
at Wright State	T	1-1
at Northeast Missouri	W	2-0
at Missouri-Rolla	T	1-1
Southeast Missouri	W	2-0
Lewis	W	4-1
at Eastern Illinois	L	0-2
Western Kentucky	W	4-0
Transylvania	W	7-0
at Wisconsin-Parkside	L	1-3
at Oakland	L	1-4
Indianapolis	W	3-0
IUPU Ft. Wayne	W	2-1
Kentucky Wesleyan	W	2-1

1985 (10-9)

at North Carolina	L	0-5
at Greensboro	W	2-0
at Campbell	L	0-1
at Kentucky Wesleyan	L	1-2
Vanderbilt	L	1-2 (OT)
at IUPU Ft. Wayne	W	7-4
Bellarmine	W	3-0
Wright State	L	2-3 (OT)
at Western Kentucky	W	2-0
at Lewis	L	1-4
at Louisville	L	2-3
Missouri-Rolla	W	1-0
Eastern Illinois	L	1-2
at Southeast Missouri	W	3-2
Oakland	L	0-4
at Transylvania	W	5-0
Northern Kentucky	W	2-0
Northern Kentucky	W	2-1
IUPU Ft. Wayne (at KWC)	W	2-1
Lewis (at KWC)	L	0-1

1986 (9-7-4)

at Missouri-Rolla	W	3-1 (OT)
at Lindenwood	W	4-0
Kentucky Wesleyan	W	7-0
at Vanderbilt	W	7-3
Harris Stowe	W	5-0
IUPU Ft. Wayne	T	1-1
Davis & Elkins	L	0-4
Louisville	T	0-0
Lewis	L	2-3 (OT)
at Wright State	W	2-1 (OT)
at Bellarmine	L	2-3
at Eastern Illinois	L	2-3 (OT)
Dowlan (at New York Tech)	T	1-1
at New York Tech	L	2-3
Indianapolis	W	2-1
Northern Kentucky (at Oakland)	T	1-1
at Oakland	L	0-2
St. Joseph's	W	7-0
at Bellarmine	W	3-0
at Lewis	L	0-1

1987 (8-11-1)

Missouri-Rolla	W	2-1
at Kentucky Wesleyan	L	2-4
at IUPU Ft. Wayne	W	4-0
Oakland	L	0-4
at Gannon	L	0-5
New York Tech (at Gannon)	L	0-2
at St. Joseph's	W	3-0
at Lewis	W	1-0
Eastern Illinois	L	0-8
at Missouri-St. Louis	L	0-2
Benedictine (at UMSL)	W	1-0 (OT)
Northeast Missouri	L	0-2
at Indianapolis	W	4-1
Northern Kentucky	W	3-1
DePauw	L	1-2



at Davis & Elkins	L	1-4
at Alderson Broaddus	L	0-4
Bellarmine	L	2-3

**1988 (14-6)
GLVC CHAMPIONS**

Brescia	W	7-1
at Northeast Missouri	L	3-4
at Missouri-Rolla	W	1-0
at Oakland	L	0-1
Kentucky Wesleyan	W	2-0
Rollins (at UMSL)	L	1-2
Oral Roberts (at UMSL)	W	5-0
Lewis	L	1-2 (OT)
St. Joseph's	W	9-0
at Bellarmine	W	2-1
Missouri-St. Louis	L	0-3
Louisville	W	2-0
at IUPU Ft. Wayne	W	6-0
at Indianapolis	W	5-0
Southeast Missouri	W	4-0
at Northern Kentucky	W	3-0
at DePauw	L	0-1
Indianapolis	W	7-0
Northern Kentucky (at Lewis)	W	1-0
at Lewis	W	2-1

**1989 (15-8-1)
GLVC CHAMPIONS**

National College of Education	W	6-0
at Sangamon State	L	2-4
at Louisville	T	2-2
Shippensburg (N)	W	2-0
Gannon (N)	L	2-5 (OT)
Missouri-Rolla	W	3-2
at Lewis	L	1-2
at St. Joseph's	W	2-0
at Brescia	W	2-0
Wisconsin-Parkside (N)	W	1-2
at Wilmington	L	1-2
at Kentucky Wesleyan	W	2-0
Oakland	L	0-1
East Stroudsburg	L	1-2
Bellarmine	W	5-0
IUPU Ft. Wayne	W	5-0
Indianapolis	W	7-1
Northern Kentucky	W	2-0
Northeast Missouri	W	1-0
at Missouri-St. Louis	L	0-1
at Southeast Missouri	L	0-1
IUPU Ft. Wayne*	W	5-0
Lewis*	W	3-1
Bellarmine*	W	5-0

(N)-Neutral Site

*-GLVC Tournament

**1990 (15-5-2)
GLVC CHAMPIONS**

USC Spartanburg+	T	4-4
Erskine+	W	3-2
Northern Kentucky*@	W	3-1
Lock Haven@	L	0-1
UNC-Greensboro	L	0-5
Catawba	L	0-1
Lewis*	W	4-0
St. Joseph's	W	5-0
Kentucky Wesleyan	W	9-0
Missouri-St. Louis	L	0-1
IUPU Ft. Wayne	W	7-0
Indianapolis*	W	7-0
Fontbonne	W	2-0
Southeast Missouri	W	4-0
Missouri Southern	W	2-0
Northeast Missouri	T	0-0
Missouri-Rolla	L	0-1
IUPU Ft. Wayne	W	6-0
St. Joseph's#	W	3-0
Northern Kentucky#	W	6-0

*GLVC;+USI Tournament; @Northern Kentucky Tournament;
#GLVC Tournament

Series Record vs. Opponents

Alabama A&M	0-1-0	Harris Stowe	4-0-0	Northern Kentucky	11-0-1
Alabama Huntsville	0-1-1	Indiana	0-4-0	Oakland	1-8-2
Alderson Broaddus	0-1-0	Indianapolis	10-0-0	Oral Roberts	1-0-0
Bellarmine	12-3-1	IUPU Ft. Wayne	11-0-1	Purdue	3-0-0
Benedictine	1-0-0	Kentucky Wesleyan	9-4-1	Quincy	0-1-0
Brescia	2-0-0	Lewis	13-5-0	Rollins	0-1-0
Cal State-Chico	0-1-0	Lindenwood	1-0-0	Sangamon State	1-2-1
Campbell	0-1-0	Lock Haven	0-1-0	Shippensburg	1-0-0
Catawba	0-1-0	Longwood	1-0-0	South Carolina-Spartanburg	0-1-1
Chicago Circle	0-1-0	Louisville	2-1-3	Southeast Missouri	6-2-0
Cleveland State	0-1-0	Loyola	1-0-0	St. Joseph's	9-0-0
Davis & Elkins	0-2-0	Marquette	1-0-0	Transylvania	2-0-0
DePauw	2-2-0	McKendree	1-1-0	Vanderbilt	5-2-0
Dowlan	0-0-1	Mercyhurst	0-1-0	Washington Univ. (Mo.)	0-3-0
Drake	0-1-0	Missouri-K.C.	0-1-0	Western Illinois	0-2-0
Eastern Illinois	0-6-0	Missouri-Rolla	8-1-1	Western Kentucky	2-0-0
East Stroudsburg	0-1-0	Missouri Southern	2-0-0	Wheaton	2-0-0
Emory	1-0-0	Missouri-St. Louis	0-7-0	Wilmington	0-1-0
Erskine	1-0-0	National College of Education	1-0-0	Wisconsin-Green Bay	1-0-0
Fontbonne	1-0-0	New York Tech	0-2-0	Wisconsin-Parkside	2-3-1
Gannon	1-2-0	North Carolina	0-1-0	Wright State	4-2-1
Georgia State	2-0-0	North Carolina-Greensboro	0-1-0	Xavier	1-0-0
Grace College	1-0-0	Northeast Missouri	4-2-1		
Greensboro College	1-0-0	North Texas State	0-1-0		



Soccer Terms

Chip - a high, soft kick taken to lift the ball over the heads of the opponents.

Corner Kick - a free kick from the corner of the playing field is awarded to the offensive team when the defensive team kicks the ball over the end line.

Center - to pass the ball from a wide position on the field into the penalty area.

Clear - a throw or kick by the goalkeeper or a kick by the defender in an attempt to get the ball away from the goal area.

Cross - the same type of pass as a center.

Defender or Back - primarily a defensive player who assists the goalkeeper in protecting the goal.

Dribble - a way of advancing the ball past defenders by a series of short taps with one or both feet.

Duration - the game is played in two halves of 45 minutes each, with the teams changing ends at half time.

Forward or Striker - primarily an attacking player whose responsibility is to create and score goals.

Goal - a goal is scored when the whole of the ball has crossed the goal line under the crossbar and between the goal posts, provided that the attacking team has not infringed the laws.

Goalkeeper - the last line of defense. The only player who can use his hands within the field of play. He is limited to using his hands only within the penalty area.

Goal Kick - a free kick awarded to the defensive team when the offensive team kicks the ball over the end line.

Half-volley - kicking the ball just as it is rebounding off the ground.

Hands - illegal act of intentionally touching the ball with the hands or arms.

Heading - a method of scoring, passing, and controlling the ball by making contact with the head.

Lob - a high, soft kick taken on the volley, lifting the ball over the heads of the opponents.

Marking - guarding an opponent.

Midfielder - both an offensive and defensive player who is primarily responsible for linking the forwards and defenders.

Obstructing - preventing the opponent from going around a player by standing in his path.

Pitch - another name for the field of play.

Result - the team scoring the greater number of goals wins; if the number of goals scored is equal, the result is a draw.

Save - the goalkeeper stopping an attempted goal by catching or deflecting the ball away from the goal.

Sliding Tackle - attempting to take the ball away from the opponent by sliding on the ground.

Sweeper - a defender who roams either in front of or behind the defender line to pick up stray passes.

Trap - controlling a passed ball by means of the feet, thighs, chest, or head.

Strassweg Field





The University of Southern Indiana endeavors to improve access to higher education and to serve the economic, intellectual, and cultural needs of southern Indiana. Established in 1965, the University of Southern Indiana serves over 7,000 students, of which 90 per cent are from Indiana.

USI is located seven miles west of downtown Evansville. The natural beauty of the University is a significant feature of the campus. Located on 300 acres of gently rolling hills, the University has six main buildings. Construction of a Health Professions Building is to be completed in 1994.

Academic programs in over 60 majors are offered in the School of Business, the School of Education and Human Services, the School of Liberal Arts, the School of Science and Engineering Technology, and the School of Nursing and Health Professions.

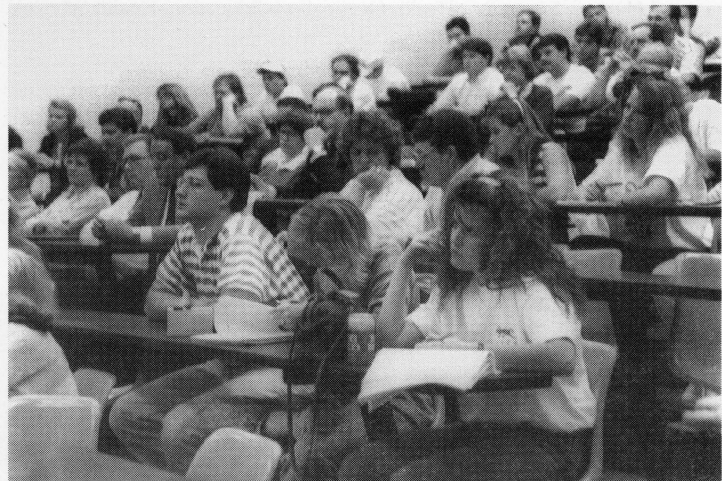
The University of Southern Indiana grants Bachelor of Arts (B.A.), Bachelor of Occupational and General Studies (B.G.S.), Bachelor of Science (B.S.), Bachelor of Science in Nursing (B.S.N.), and Bachelor of Social Work (B.S.W.) degrees at the undergraduate level. Several of the schools offer associate degrees for two or three years of full-time study. Graduate students may work toward a master's degree in business administration, education, industrial management, or liberal studies.

Through the Office of Continuing Education, USI offers seminars, workshops, short courses, and customized and in-house programs. The topic range includes business/professional development, Total Quality Management, fitness/wellness/recreation, arts and leisure, personal interest, programs for children, and travel/study programs.

Located within walking and biking distance to the campus, the Mid America Student Housing (MASH) units and Campus Apartments are home to over 1,200 students at USI.

USI sponsors 11 intercollegiate sports—men's baseball, basketball, cross country, golf, and tennis and women's basketball, softball, cross country, volleyball, and tennis—in the Great Lakes Valley Conference of NCAA Division II competition. The soccer program is independent in NCAA Division I.

Campus Housing





DEGREES

The University of Southern Indiana confers six undergraduate degrees: Bachelor of Arts, Bachelor of Science, Bachelor of General Studies, Bachelor of Social Work, Associate of Arts and Associate of Science.

BACCALAUREATE DEGREE PROGRAMS

School of Business

Accounting, Business Administration (students may concentrate in the following areas of interest: Accounting, Computer Information Systems, Finance/Economics, Management, Marketing), Business Education, Economics

School of Education & Human Services

Occupational and General Studies, Elementary Education (includes Coaching, Computers, and Kindergarten endorsements), Physical Education, Secondary Education (high school certification is available for most majors), Social Work

School of Liberal Arts

Art, Communications (emphasis in Journalism, Public Relations, Radio-Television, Speech or Theater), English, French, German, History, Philosophy, Political Science, Psychology, Sociology (concentrations in Criminal Justice and Gerontology are available), Spanish

School of Nursing & Health Professions

Dental Hygiene Education, Health Occupations Education, Health Services, Nursing, Occupational Therapy

School of Science & Engineering Technology

Biology, Biophysics, Chemistry, Civil Engineering Technology, Electrical Engineering Technology, General Science, Geology, Industrial Supervision, Mathematics, Mechanical Engineering Technology

ASSOCIATE DEGREE PROGRAMS *

School of Business

Business (2 years), Computer Information Systems (2 years), Secretarial Administration (2 years)

School of Education & Human Services

Early Childhood Education (2 years)

School of Liberal Arts

Communications (2 years), Social Science (2 years)

School of Nursing & Health Professions

Dental Assisting (1 or 2 years), Dental Hygiene (3 years), Nursing (2 years), Radiologic Technology (28 months), Respiratory Therapy (24 months)

School of Science & Engineering Technology

Civil Engineering Technology (2 years), Electrical Engineering Technology (2 years), Mechanical Engineering Technology (2 years), Science (2 years)

*NOTE: Normally require less than 4 years of full-time study.

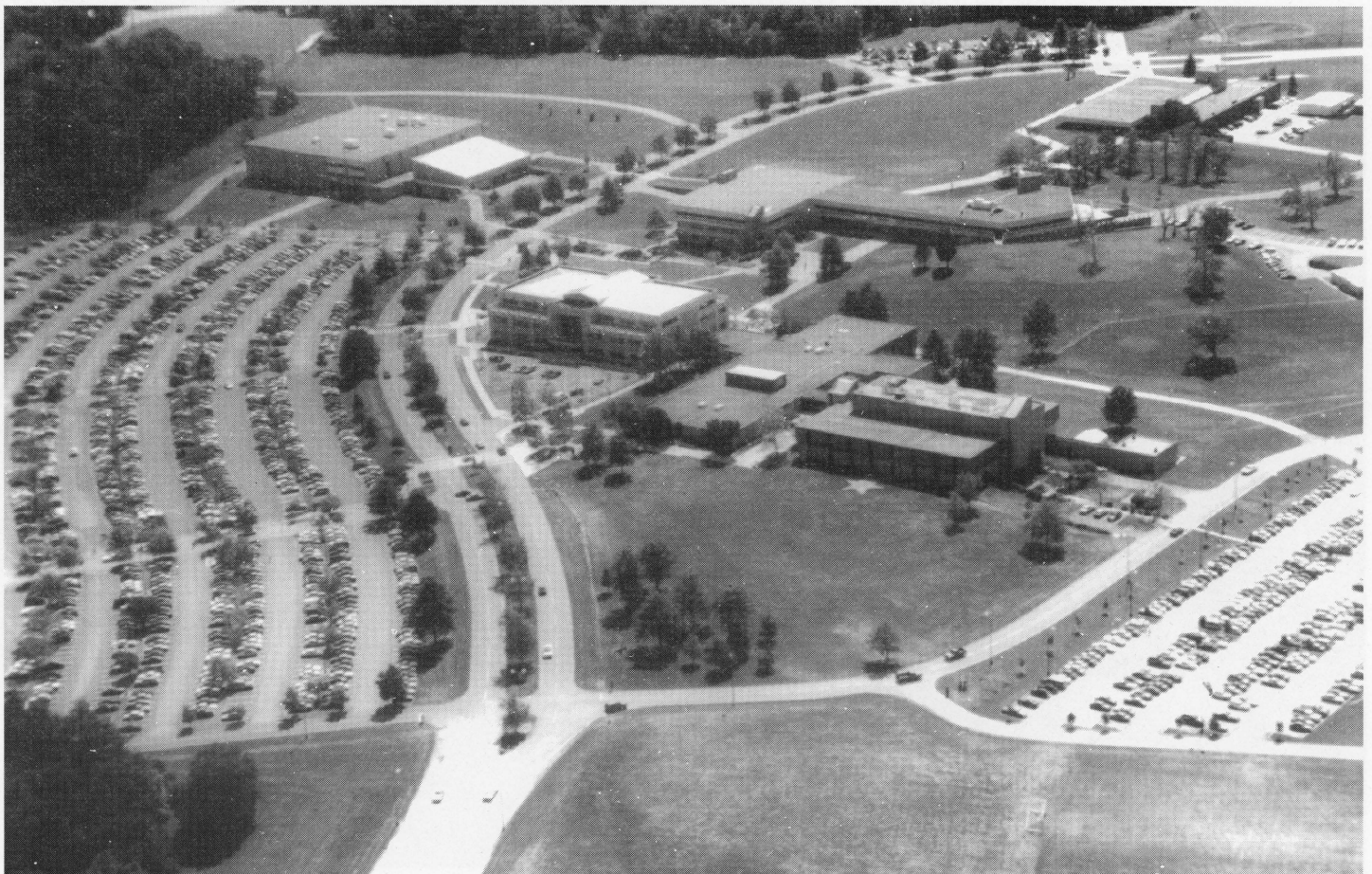
PRE-PROFESSIONAL CURRICULA **

Pre-Chiropractic, Pre-Dentistry, Pre-Engineering, Pre-Forestry, Pre-Law, Pre-Medicine, Pre-Nursing, Pre-Optometry, Pre-Osteopathy, Pre-Pharmacy, Pre-Physical Therapy, Pre-Podiatry, Pre-Veterinary

**NOTE: Require from 1 to 4 years study at USI prior to applying for admission to appropriate professional school.

GRADUATE OFFERINGS

USI master's degree programs are offered in the areas of Industrial Management, Secondary Education, Business Administration, and Liberal Studies. For more information contact the USI Graduate Studies Office at (812) 465-7015.





GE Plastics

Mt. Vernon, Indiana

Committed
to leadership
in the Plastics Industry,
and to the
continued prosperity
and safety
of our Community.

Three way tie
for thirst.

