

1997 NCAA II FINALISTS • TWO NCAA II ELITE EIGHT APPEARANCES



SIX NCAA TOURNAMENT APPEARANCES • FIVE GLVC CHAMPIONSHIPS



# A WINNING FORMULA

# GE People

*Family. Friends. Neighbors*

**Committed to the continued prosperity  
and safety of our community and the  
environment.**



---

***GE Plastics***

***Mt. Vernon, In.***

# 2002-2003 Women's BASKETBALL SEASON



## 2002-2003 Women's Basketball Schedule

DATE	OPPONENTS	TIME
Sat., November 16	Indiana State University (Exhibition Game)	4:30 p.m.
	Eagle Club Classic Jefferson City, Tennessee (Hosted by Carson-Newman College)	
Fri., November 22	at Carson-Newman College	5 p.m. (CT)
Sat., November 23	vs. Mars Hill College	3 p.m. (CT)
Sat., November 30	@ Kentucky Wesleyan College*	5:15 p.m.
Mon., December 2	@ Bellarmine College*	4:45 p.m.
Thu., December 5	UNIVERSITY OF INDIANAPOLIS*	5:15 p.m.
Sat., December 7	SAINT JOSEPH'S COLLEGE*	1 p.m.
Sat., December 14	MARIAN COLLEGE	1 p.m.
Tue., December 17	UNIVERSITY OF ILLINOIS-SPRINGFIELD	7 p.m.
Fri., December 20	@ Michigan Tech University	5 p.m.
	GLVC/GLIAC CHALLENGE Evansville, Indiana (Hosted by USI)	
Sat., December 28	NORTHWOOD UNIVERSITY	4 p.m.
Sun., December 29	FERRIS STATE UNIVERSITY	4 p.m.
Thu., January 2	@ Lewis University*	5:15 p.m.
Sat., January 4	@ Southern Illinois University Edwardsville*	1 p.m.
Thu., January 9	UNIVERSITY OF MISSOURI-ST. LOUIS*	5:15 p.m.
Thu., January 16	BELLARMINE UNIVERSITY*	5:15 p.m.
Sat., January 18	NORTHERN KENTUCKY UNIVERSITY*	1 p.m.
Thu., January 23	@ Saint Joseph's College*	5:15 p.m.
Sat., January 25	@ University of Wisconsin-Parkside*	1 p.m.
Thu., January 30	SOUTHERN ILLINOIS U. EDWARDSVILLE*	5:15 p.m.
Sat., February 1	QUINCY UNIVERSITY* (Homecoming)	5:15 p.m.
Sat., February 8	KENTUCKY WESLEYAN COLLEGE*	5:15 p.m.
Thu., February 13	@ Northern Kentucky University*	4:30 p.m.
Sat., February 15	@ University of Indianapolis*	Noon
Thu., February 20	UNIVERSITY OF WISCONSIN-PARKSIDE*	5:15 p.m.
Sat., February 22	LEWIS UNIVERSITY*	1 p.m.
Thu., February 27	@ Quincy University*	5:15 p.m.
Sat., March 1	@ University of Missouri-St. Louis*	1 p.m.
	Great Lakes Valley Conference Tournament (Roberts Stadium, Evansville, Indiana) Thursday, March 6 – Saturday, March 8	
	NCAA Division II Tournament	
	Fri., March 14 – Mon., March 17: Great Lakes Regional (Site to be determined)	
	Wed., March 26 – Sat., March 29: Elite Eight (Site: Lakeland, Florida; The Lakeland Center)	

\*GLVC Game; HOME GAMES IN BOLD AND CAPS; All times are CST

## Table of Contents

About USI .....	2-3
H. Ray Hoops, President .....	4
Jon Mark Hall, Director of Athletics .....	4
About USI from the Student Athletes .....	5
2002-03 Women's Basketball Outlook .....	6-7
<b>Women's Basketball Coaching Staff</b>	
Rick Stein, Head Coach .....	8-9
Assistant Coaches/Managers .....	10
2002-03 Women's Basketball Roster .....	11
Meet the Screaming Eagles .....	12-20
An Elite Foundation .....	21
2002-03 Women's Basketball Opponents .....	22-23
2001-02 Statistics and Results .....	24
2001-02 GLVC Standings and All-GLVC Teams ...	25
USI Record Book .....	26-30
USI Quick Facts .....	30
Varsity Club All-Americans and Super Sponsors .	31

### Credits

Layout and Design .....	Dan McDonnell
Writing .....	USI Sports Information
Photography .....	Elizabeth Courtney
	Mark Brendal
	LaVerne Jones
Editing & Printing .....	USI Publishing Services

# About the University of **SOUTHERN INDIANA**

## Location

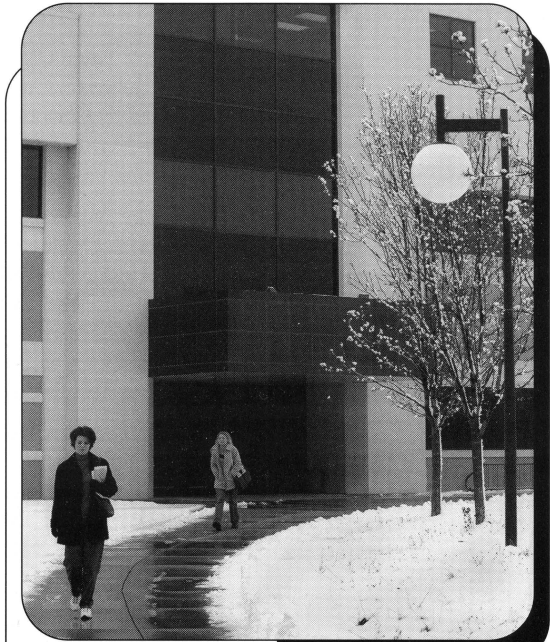
Founded in 1965, the University of Southern Indiana is located in Evansville, the state's third largest city. From its picturesque site on the Ohio River, Evansville is a comfortable drive from the major metropolitan areas of Indianapolis, Cincinnati, Louisville, Nashville, and St. Louis.

## Academic Life

The University enrolls 9,675 students and offers undergraduate majors in 60 areas of study. Several graduate degree programs also are available.

## Campus Life

Beyond the classroom, students have opportunities to participate in more than 80 organizations offering co-curricular and extra-curricular activities. Special interest clubs, student government, sororities and fraternities, music and drama groups, and other organizations enable the students to enjoy and contribute to campus life.



*Health Professions*



*Residence Life Office*

## Residence Life

USI offers two kinds of housing. One is the conventional apartment and the other is suite-style housing in a residence hall. Computer labs, laundromats, a convenience store, outdoor recreational areas, and student lounges contribute to an efficient living environment that has proven overwhelmingly popular with students. A meal plan is available in the University Center. More than 2,900 students live on campus.

## Financial Assistance

USI is the most affordable four-year institution in the state of Indiana, and some families find that they can handle the cost of a USI education without financial aid. Many others qualify for need-based financial aid packages, including grants, loans, and jobs.

## Degrees offered at USI

### Undergraduate Degree Programs

The University of Southern Indiana confers 10 undergraduate degrees: Bachelor of Arts, Bachelor of Science, Bachelor of Science in Engineering, Bachelor of Science in Nursing, Bachelor of General Studies, Bachelor of Social Work, Associate of Arts, Associate of Science, Associate of Science in Nursing, and Associate of Science in Occupational Therapy Assisting.

### Baccalaureate Degree Programs

#### School of Business

- Accounting • Accounting and Professional Services • Applied Computer Science • Business Administration (students may concentrate in the following areas of interest: Accounting, Computer Information Systems, Entrepreneurship/Small Business, Finance/Economics, Management, Marketing, or Office Information Systems) • Business Education • Computer Information Systems • Economics • Finance • Management • Marketing

#### Bower-Suhrheinrich School of Education and Human Services

- Elementary Education (includes Coaching, Computers, Junior High/Middle School, Kindergarten, Language Arts, and Reading minors and endorsements) • Exceptional Needs • Exercise Science • Physical Education • Senior High/Junior High/Middle School Education (grades 5-12)—certification is available for most majors • Social Work

#### Division of Extended Services

- General Studies

#### School of Liberal Arts

- Advertising/Public Relations • Art • Communication Studies • Computer Publishing/Journalism • English • French • German • History • Interpersonal-Organizational Communications • Philosophy • Political Science • Psychology • Radio-Television • Sociology (concentrations and/or minors in Anthropology, Criminal Justice, and Gerontology are available) • Spanish • Theatre Arts

#### School of Nursing and Health Professions

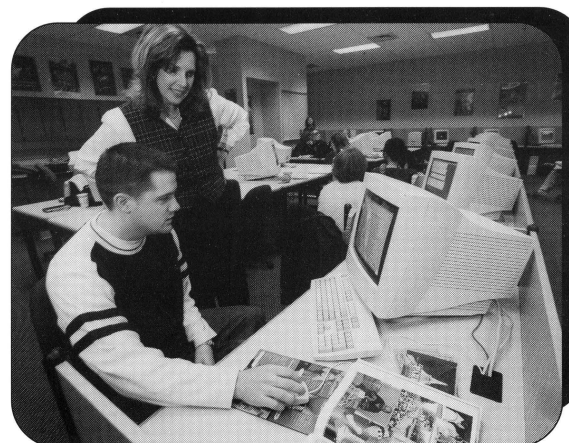
- Dental Hygiene Education • Health Services • Nursing • Occupational Therapy • Radiologic and Imaging Sciences

#### Pott School of Science and Engineering

- Biology • Biophysics • Chemistry • Engineering • Geology • Industrial Supervision • Mathematics

### Post-Baccalaureate Certificates

- Computer Information Systems • Professional Accountancy



### Associate Degree Programs

#### School of Business

- Administrative Support Systems • Business • Computer Information Systems

#### Bower-Suhrheinrich School of Education and Human Services

- Early Childhood Education

#### School of Liberal Arts

- Communications • Social Science

#### School of Nursing and Health Professions

- Dental Assisting • Dental Hygiene • Nursing • Occupational Therapy Assistant • Radiologic Technology • Respiratory Therapy

#### Pre-Professional Curricula

- Pre-Chiropractic • Pre-Dentistry • Pre-Engineering • Pre-Forestry • Pre-Law • Pre-Medical Technology • Pre-Medicine • Pre-Optometry • Pre-Osteopathy • Pre-Pharmacy • Pre-Physician Assistant • Pre-Physical Therapy • Pre-Podiatry • Pre-Veterinary

### Graduate Programs

- Master of Arts in Liberal Studies • Master of Business Administration • Master of Health Administration • Master of Public Administration • Master of Science in Education • Master of Science in Industrial Management • Master of Science in Accountancy • Master of Science in Nursing • Master of Science in Occupational Therapy • Master of Social Work

## H. Ray Hoops, *President*



**H. Ray Hoops** became the second president of the University of Southern Indiana in July 1994. During his tenure, he has forged important community partnerships and has overseen dramatic growth in the University's enrollment, facilities, and academic programs.

A native of Illinois, Dr. Hoops received his undergraduate degree from Eastern Illinois University and master's and doctoral degrees in Audiology and Speech Sciences from Purdue University. He also completed an M.B.A. at Moorhead State University.

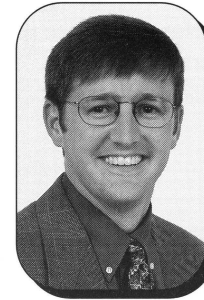
His career as a scientist and educator has included a faculty appointment jointly at the University of Michigan and Wayne State University. He published extensively and was nationally recognized for his contributions in the areas of rehabilitation of post-surgical patients with cancer of the larynx and in the analysis of language dynamics resulting from brain damage. Among his numerous publications in a variety of behavioral and medical journals was the report on a study which received the National Research Award, the highest honor of the American Speech and Hearing Association. Dr. Hoops also was named Fellow of the Association.

His administrative appointments included the directorship of the Division of Marketing in the U.S. Department of Health, Education, and Welfare. He received two national service awards for that work. He also was a Senior Fulbright-Hayes Research Scholar in the College of Medicine at the University of the Philippines. Other appointments included dean of the Graduate College of the University of Northern Iowa, associate vice chancellor for Academic Affairs for the Oregon State System of Higher Education, vice president for Academic Affairs at North Dakota State University and president of South Dakota State University.

In the six years prior to becoming the president of the University of Southern Indiana, Dr. Hoops served as the vice chancellor for Academic Affairs at the University of Mississippi. While at "Ole Miss," Dr. Hoops received the National Council of State Governments Association Award for his pioneering work on Project '95, a blueprint for the reform of education in the state of Mississippi. He also received the Peterson's Guide Award for contributions to the education of minority students in the innovative and highly successful graduate participation initiative.

President Hoops serves on the Deaconess Hospital Board of Directors, the Welborn Foundation Board of Directors, and the WNIN Board of Directors. He is a member of the Board of Directors of the American Association of State Colleges and Universities and serves as the chair of the Indiana Conference of Higher Education.

## Jon Mark Hall, *Director of Athletics*



**Jon Mark Hall** was named director of Athletics in January 2002.

Hall joined the University of Southern Indiana Athletic Department in 1995 as an assistant athletic director and men's tennis coach. As an assistant athletic director, Hall was the assistant administrator for internal affairs, oversaw budgets, was the compliance coordinator, and oversaw game management operations.

As the men's tennis coach, no one did it better in the Great Lakes Valley Conference than Hall. He was named the GLVC Coach of the Year the past five years and directed the Eagles to four GLVC regular season titles and GLVC Tournament crowns.

During his final season as head coach, Hall led the Eagles to a third straight appearance in the NCAA Division II Tournament and their first victory in the post-season. In 2000 and 2001, Hall put the Eagles on the national map with the first two invitations to the NCAA Division II Tournament in the 27-year history of the program.

Hall's Eagles have won 58 of 75 dual matches in his final three years, including 34 straight GLVC matches. USI was 16-4, 8-0 GLVC in 2001-02; 22-7, 8-1 GLVC in 2000-01; and 20-6, 9-0 GLVC in 1999-2000.

Recognized as one of the top coaches in Division II, Hall was invited to participate in the 2001 NCAA Yes Clinic at the Division II National Tennis Championships.

Hall came to USI after a tenure at the University of South Carolina-Spartanburg as an assistant athletic director, where he was the NCAA compliance coordinator, oversaw the academic support service program for student athletes, and coordinated the Athletes Can Educate (ACE) program. He also assisted in fund-raising and promotion activities.

The Murray, Kentucky, native is a 1990 cum laude graduate from Murray State University, with a bachelor's degree in business administration. While at MSU, Hall was on the tennis team for two seasons, earning Academic All-Ohio Valley Conference honors in 1987. Hall received his master's degree in sports administration from Ohio State University in 1992.

Hall and his wife Patti reside in Evansville and have a son, Nathan, and a daughter, Mary Claire.

## What the players **SAY** about USI



“USI has a beautiful campus with a great atmosphere. I have had the opportunity to play basketball in a great program that was close to home and my family.”

— *Bethany Miller, Senior*



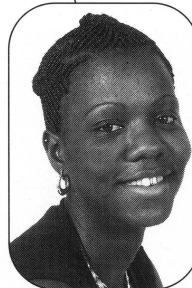
“As a Presidential Scholar, I know I will receive a first class education. It is a wonderful environment and a great place to meet new people.”

— *Meghann Schenk, Freshman*



“USI has such a warm, comfortable atmosphere that you feel the moment you step on campus. The staff goes above and beyond the call of duty to make sure everyone succeeds.”

— *April Williams, Sophomore*



“I like the living arrangements, the coaching staff, and the fact that this school has a good athletic program and all the classes I needed to take for my major.”

— *Africa Sherrod, Senior*

After two straight Great Lakes Valley Conference Tournament championships, consecutive NCAA Division II Sweet Sixteen appearances, and a trip to the NCAA II Elite Eight, expectations are high for the University of Southern Indiana women's basketball team.

However, for the Screaming Eagles to earn their third straight GLVC Tournament championships and Sweet Sixteen appearances, they will have to find a way to replace the 66.7 points and 25.7 rebounds per game that are gone from last season.

USI lost seven players from last season's squad, including two All-GLVC performers and an All-American.

For the Eagles to reach the Elite Eight for the second time in three seasons, they will have to rebuild a nucleus that posted a 55-10 record the last two seasons.

"Rebuilding," however, is one term Head Coach **Rick Stein** and his staff do not like to use.

"Reloading" is the term this staff refers to as it reflects something they have done quite well in recent years.

After losing 39.5 points, 19 rebounds, two All-GLVC players, and an All-American from a team that won the Great Lakes Regional Championship, Stein and his staff reloaded to post 27 wins and earn USI's second straight GLVC Tournament title.

This season, Stein looks to five returnees, including All-GLVC honorable mention center **Africa Sherrod** (Ft. Lauderdale, Florida), and seven newcomers to reload. Sherrod averaged 11.2 points, 6.0 rebounds per contest, and was twice named GLVC "Player of the Week."

Joining Sherrod is senior guard/forward **Sarah McIntosh** (Cabery, Illinois) and senior guard **Bethany Miller** (Princeton, Indiana).

McIntosh came on strong down the stretch for USI, recording a season-best 16 points against Bellarmine University in the last week of the regular season and 15 points against the University of Wisconsin-Parkside in the GLVC Tournament. In her last seven games, McIntosh averaged 7.3 points per game, more than double that of her season average.

Miller needs to continue her solid play at the point guard position in 2002-03. In three seasons with USI, the Eagles have counted on her to distribute the ball and play solid defense. She has not let them down as she enters the season needing 52 assists and 25 steals to crack the top five at USI in both categories.

Last season, Miller averaged 2.7 points and 2.2 assists off the bench. She was limited to just 25 games during her junior campaign due to injury.

USI will look for more production out of sophomore guards **Amber Calhoun** (Evansville, Indiana) and

**April Williams** (Lyons, Indiana). Both saw limited action in 2001-02, but gained valuable experience from their freshman campaign.

The Eagles will have seven newcomers on the 2002-03 roster. Stein has added two players from the junior college ranks, four from the high school ranks, and will add USI volleyball standout **Shannon Wells** (Merrillville, Indiana) at the end of the volleyball season.

Wells, who will have two years of eligibility, is the USI volleyball team's all-time leader in career kills, service aces, and digs. She was named the 2002 GLVC "Player of the Year" and the 2001 GLVC "Scholar Athlete of the Year" for volleyball.

In addition to Wells, the junior class will feature 5'10" forward **Shajuan Lindsey** (Midlotian, Illinois). A two-time All-Region performer at Illinois Central College, Lindsey helped ICC to a 32-3 record and



*USI returns five players from last season's squad, including All-GLVC performer **Africa Sherrod** (back row, fourth from left).*

*In 2001-02, the Eagles finished their season with a 27-6 record and their second consecutive GLVC Tournament Championship.*

*USI also reached the NCAA II Sweet Sixteen for the second straight season and the third time in school history.*



# 2002-2003 Women's BASKETBALL OUTLOOK



a third-place finish in the NJCAA II National Tournament in 2001-02. Lindsey averaged 8.3 points and 3.6 rebounds in 32 games as a sophomore. She averaged 10.1 points as a freshman.

The sophomore class includes transfer **Megan Nelson** (Clarendon Hills, Illinois). Nelson, a 6'2" forward/center, averaged 14 points and nine rebounds per game as a freshman and helped lead the College of DuPage to a 27-4 record and the 2002 NJCAA Division III National Championship.

The Eagles have added four freshmen to their 2002-03 squad. That list includes 5'11" guard/forward **Ashley Green** (Otterbein, Indiana). As a senior, Green averaged 17 points per contest, shot 82 percent from the free throw line, and led Benton Central High School with 72 steals. She was second on the team in rebounds, blocks, and assists.

Green will be joined by guard/forward **Amanda Lechlitner** (Mishawaka, Indiana), forward **Meghann Schenk** (Evansville, Indiana), and forward/center **Hollie Johnson** (Bedford, Indiana).

Lechlitner averaged 9.6 points and 4.1 rebounds per game as a senior at Penn High School and earned All-Northern Indiana Conference. Her efforts led PHS to the 2002 sectional championships.

Schenk, an Academic All-State performer, helped lead Mater Dei to a 17-7 overall record and a 6-1 mark against teams from Indiana's Class 2A. For her efforts, she earned second-team All-Metro honors.

Johnson, a graduate of Bedford North High School in Bedford, Indiana, earned All-Conference honors as a junior and a senior as well as All-State honorable mention honors as a senior. She was a Hoosier Basketball Top 100 senior in 2002.

The Eagles waste no time finding tough competition as they square off against 2002 NCAA II Elite Eight

participant Mars Hill in USI's second game of the season at the Carson-Newman Tournament in Jefferson City, Tennessee.

USI's non-conference schedule also features Carson-Newman, Michigan Tech University, Marian College, and the University of Illinois-Springfield. In addition, USI will host the GLVC/GLIAC Challenge, featuring GLVC foe Southern Illinois University Edwardsville and regional foes Ferris State University and Northwood University.

The Eagles face tough GLVC schedules as they play four of their first six league games and four of the last six conference contests on the road. USI embarks on its quest for a GLVC title on November 30 at the Sportscenter in Owensboro, Kentucky, against Kentucky Wesleyan College.

USI's first GLVC home game is on December 5 against the University of Indianapolis. USI hosts Northern Kentucky University, the Great Lakes Regional champion and 2002 Elite Eight team, on January 18. The USI Homecoming game is on February 1, when the Eagles host Quincy University.

The Eagles make their bid for a third straight GLVC Tournament title Wednesday, March 5 though Saturday, March 8.

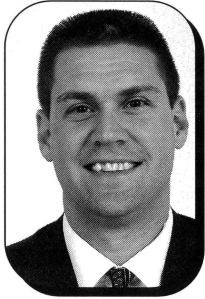


Senior guard **Bethany Miller** (center #4) has been a part of two GLVC Tournament Championship teams, a regional finalist team, and the 2001 NCAA II Elite Eight team.

In the 2001-02 season, the Eagles finished 28-4 and advanced to the NCAA II Elite Eight for the second time in school history.

Miller has been with the Eagles for three years, helping the Eagles to a 70-22 record.

## USI Head Coach Rick Stein



Rick Stein enters his fourth season at the helm of the University of Southern Indiana women's basketball program after leading the Screaming Eagles to a second straight Great Lakes Valley Conference Championship and NCAA Division II Great Lakes Regional appearance in 2001-02.

Stein also has led the Eagles into the national spotlight. His squad has been ranked nationally 32 consecutive weeks since January 3, 2001.

In his second season with the Eagles, Stein led USI to a 28-4 record and the biggest season-to-season turn around in school history (+13 wins). Stein, who earned GLVC Coach of the Year honors, directed the Screaming Eagles to the Great Lakes Valley Conference Championship, GLVC Tournament Championship, the NCAA Division II Tournament appearance, and second NCAA II Elite Eight appearance.

In his first season, Stein went 15-12 overall, tying the record for most victories for a rookie head coach and setting the record for best winning percentage for a rookie coach (.556). Stein's overall winning percentage is the best in USI women's basketball history.

Stein is a 1992 USI graduate with a Bachelor of Science degree in business administration. He joined the Eagles program in 1991-92 as a graduate assistant under former Head Coach Chancellor Dugan. He was promoted to head assistant coach in 1994 and promptly helped Dugan and the Eagles to their best season as a varsity sport at USI.

In his eight seasons, Stein helped Dugan amass a 159-73 record with four straight NCAA Division II Tournament appearances (1994-95 to 1997-98) and three Great Lakes Valley Conference titles. The Eagles were the NCAA II Tournament finalist and produced the only perfect season in GLVC history (20-0) in 1997.

Since Stein's appointment as assistant coach in 1994-95, Southern Indiana has a record of 119-28, an .809 winning percentage.

A native of Crete, Illinois, Stein was a two-year starter on the Southern Indiana

men's basketball team from 1989-91. During his tenure as a player, he helped USI to an appearance in the NCAA Division II South Central Regional in 1989-90 and a win over Division I University of Wisconsin in 1990-91. Before joining USI's team, he played basketball at Parkland College in Champaign, Illinois, and earned an associate degree. Parkland finished as the NJCAA Division II runner-up in 1988 and fourth nationally in 1989.

Stein and his wife Kari have a son, Alex, and a daughter, Mallorie.



# USI Head Coach Rick Stein

## Stein's numbers at USI

### As Assistant Coach

Year	Record	Accomplishments
1991-99	159-73	<ul style="list-style-type: none"> <li>• Eight seasons as assistant coach</li> <li>• One NCAA II Elite Eight appearance</li> <li>• Four NCAA II Tournament appearances</li> <li>• Three GLVC Championships</li> <li>• Two GLVC Tournament appearances</li> </ul>

### As Head Coach

Year	Record	Accomplishments
1999-00	15-12	<ul style="list-style-type: none"> <li>• Set USI record for winning percentage and victories by a rookie head coach</li> <li>• GLVC Tournament</li> </ul>
2000-01	28- 4	<ul style="list-style-type: none"> <li>• GLVC Coach of the Year</li> <li>• GLVC Regular Season co-Champions</li> <li>• GLVC Tournament Champions</li> <li>• NCAA II Great Lakes Regional Champions</li> <li>• NCAA II Elite Eight</li> </ul>
2001-02	27- 6	<ul style="list-style-type: none"> <li>• GLVC Tournament Champions</li> <li>• NCAA Division II Great Lakes Regional Finalist</li> </ul>
Total	70-22 (.761)	<ul style="list-style-type: none"> <li>• One NCAA II Elite Eight appearance</li> <li>• Two NCAA II Tournament appearance</li> <li>• One GLVC Championship</li> <li>• Two GLVC Tournament Championship</li> </ul>



## Assistant Coach LeAnn Freeland



Assistant Coach LeAnn Freeland begins her fourth season on the Eagles' bench. A native of Sims, Illinois, Freeland assists with recruiting, on-the-court coaching, game scouting, and individual player assessments.

In addition to her coaching duties, Freeland is the USI senior women's administrator and an instructor in physical education. She is a 1998 USI graduate with a bachelor's degree in elementary education. Freeland completed her master's degree at USI in elementary education in 2000.

Prior to coaching at USI, she spent two years in the Warrick County (Indiana) School Corporation. As a coach, Freeland had an overall record of 26-3, leading the Castle High School freshman team to a 13-1 record in 1997-98 and Castle Junior High School's eighth grade team to a 13-2 record in 1998-99.

In her four-year career at USI, Freeland was a three-time Women's Basketball Coaches Association/Kodak All-American and a two-time GTE/College Sports Information Directors Academic All-American. She holds the USI career records for scoring (2,269 points), rebounds (961), field goals made (887), free throws made (738), and blocked shots (194).

The Eagles were 91-24 (.791) during Freeland's four years as a player, including an appearance in the 1997 NCAA Division II Tournament Finals, three NCAA II Tournament berths, and two GLVC titles.

## Manager Brianna Wright



**Brianna Wright** enters her second season as the manager of the USI women's basketball team. Wright is responsible for the Lady Eagle Ball Girl Program, taping games, and daily practice responsibilities.

A native of St. Croix, Indiana, Wright is majoring in English Education. She graduated from Perry Central High School where she lettered in basketball and volleyball. Wright earned the 2001 Mental Attitude Award.

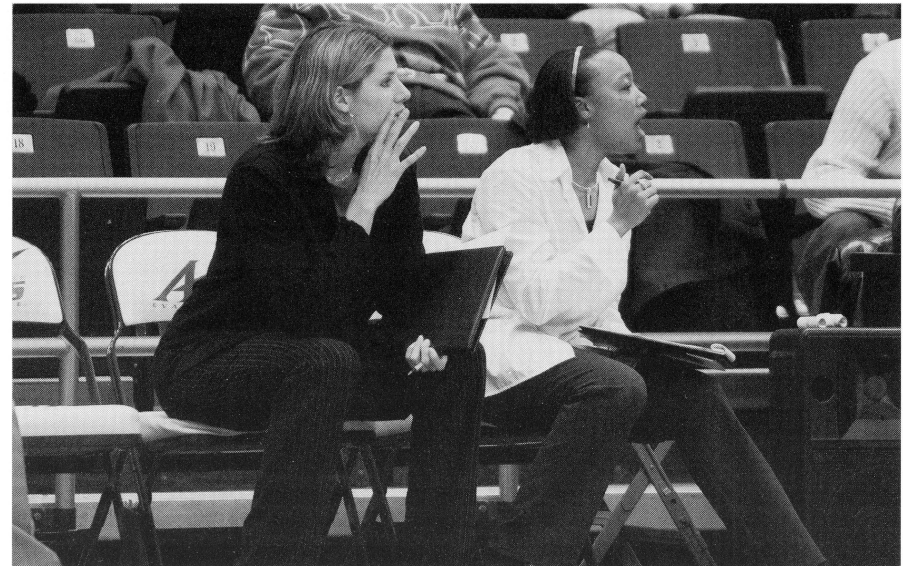
## Assistant Coach Randa Gatling



A 1999 USI graduate with a bachelor's degree in social work, Assistant Coach Randa Gatling returns for her fourth season with the Eagles. Gatling assists with game scouts, recruiting, player assessment, and on-the-court skill work with the guards.

Gatling started her career at Evansville Central High School. She served as the head coach for the first-ever Central girl's freshman basketball team and was instrumental in its creation in 1998-99. Gatling volunteered two summers as a head coach for the Evansville girls' YMCA team in the midnight basketball league and in tournaments at the University of Evansville.

During her playing days at USI, Gatling, a native of Evansville, Indiana, was a member of the 1997 NCAA Division II Tournament Finalist team; the 1995, 1996, 1997, and 1998 teams which appeared in the NCAA II Tournament; and the 1995, 1997, and 1998 Great Lakes Valley Conference Championship teams. The Eagles were a dominating 100-16 (.862) during Gatling's four years as a player, including an amazing 67-9 (.881) in the GLVC.



Head Coach **Rick Stein** and assistant coaches **LeAnn Freeland** and **Randa Gatling** (above) have led the Eagles to 55 wins and two GLVC Tournament Championships the last two seasons. The Eagles have reached the NCAA II Sweet Sixteen the last two seasons.

In six seasons together, as players and coaches, Stein, Freeland, and Gatling have led the Eagles to a 144-36 record,

# 2002-2003 SCREAMING EAGLES



*Back Row (L-R):* Assistant Coach Randa Gatling, Assistant Coach LeAnn Freeland, Kennitra Johnson, Ashley Green, Africa Sherrod, Megan Nelson, Shajuan Lindsey, Lindsey Cooper, Buffy Graves, Head Coach Rick Stein.

*Front Row (L-R):* Meghann Schenk, Amanda Lechlitner, Sarah McIntosh, Bethany Miller, April Williams, Hollie Johnson, Amber Calhoun.

## 2002-2003 Roster

No.	Name	Pos.	Cl.	Ht.	Hometown (High School)	No.	Name	Pos.	Cl.	Ht.	Hometown (High School)
4	Bethany Miller	G	Sr.	5'8"	Princeton, IN (Princeton)	33	Africa Sherrod	F/C	Sr.	6'1"	Ft. Lauderdale, FL (Boyd Anderson)
10	Hollie Johnson	F/C	Fr.	5'11"	Bedford, IN (Bedford North)	34	Meghann Schenk	F	Fr.	5'11"	Evansville, IN (Mater Dei)
11	Ashley Green	G/F	Fr.	5'11"	Otterbein, IN (Benton Central)	51	Megan Nelson	F/C	So.	6'2"	Clarendon Hills, IL (Hinsdale South)
14	April Williams	G	So.	5'7"	Lyons, IN (White River Valley)		*Kennitra Johnson	G	Jr.	5'8"	New Albany, IN (New Albany)
15	Amanda Lechlitner	G/F	Fr.	5'8"	Mishawaka, IN (Penn)		Head Coach: Rick Stein (fourth season)				
20	Amber Calhoun	G	So.	5'6"	Evansville, IN (Bosse)		Assistant Coaches: LeAnn Freeland (fourth season), Randa Gatling (fourth season)				
21	Sarah McIntosh	G/F	Sr.	5'9"	Cabery, IL (Tri-Point)		Manager: Brianna Wright (second season)				
22	Shajuan Lindsey	F	Jr.	5'10"	Midlothian, IL (Bremen)						
24	Shannon Wells	G/F	Jr.	5'8"	Merrillville, IN (Merrillville)						

\*Denotes players that are redshirting.



## Bethany Miller #4

**5'8" ...Senior...Guard...Princeton, Indiana**  
**MAJOR: Exercise Science**

**2001-02:** Limited to 25 games due to an early season injury...Averaged 2.7 ppg, 1.6 rpg, and 2.2 assists per game...had a season-high eight points against Northern Kentucky University and a season-best six assists against the University of Wisconsin-Parkside...was one steal away from tying the school record for steals in a game when she recorded nine against the University of Illinois-Springfield...needs 52 assists to crack the top 5 all-time at USI in career assists...needs 25 steals to reach top five all-time at USI in career steals. **2000-01:** Played in all 32 games for the Eagles, including a start in USI's NCAA II Elite Eight game...named Academic All-GLVC for second consecutive season...averaged 4.4 ppg, 2.4 rpg, and 3.2 assists per game as a sophomore...second on the team with 64 total steals...had a season-high 11 points at Southern Illinois University Edwardsville and at home against Kentucky Wesleyan College...also had a season-high eight assists against Purdue University-Calumet. **1999-2000:** Overcame injuries and illness at different points during the season to play in all 27 games and start the last 15 at the point guard position...led the team with 3.0 assists per contest and tied for third with 1.4 steals per game...averaged 5.1 ppg...had a career-high 16 points against Wisconsin-Parkside and 10 assists and eight rebounds against Saint Joseph's College...named Academic All-GLVC as a freshman. **HIGH SCHOOL:** Earned letters in basketball, cross country, golf, and track at Princeton Community High School... became the PCHS career leader with 1,322 points and 364 assists...averaged 21.6 ppg, 8.7 rebounds, 5.3 assists, and 5.3 steals as a senior...was a starter on the PCHS team which advanced to the Indiana High School Final Four in 1996. **PERSONAL:** Born August 17, 1981...daughter of Larry and Kim Miller.

### Eagle PROFILE

**Favorite food:** Mashed potatoes • **Favorite professional athlete:** Fernando Vina • **Favorite television show:** "Friends" • **Favorite movie:** "Remember the Titans" • **Favorite recording artist:** Kenny Chesney • **Favorite book:** Bible • **If you could go anywhere, where would you go?** Australia and Hawaii • **Most memorable moment:** Watching my niece being born • **Most important person(s) in your life:** My parents and sister

### CAREER STATISTICS

	G/GS	FGM/FGA	PCT.	3FGM/FGA	PCT.	FTM/FTA	PCT.	REB.	AVG.	AST.	STL.	BLK.	TP.	AVG.	MIN.
99-00	27/15	45/112	.402	3/16	.188	46/67	.687	74	2.7	80	38	2	139	5.1	578
00-01	32/11	43/111	.387	7/30	.233	47/70	.671	77	2.4	103	64	1	140	4.4	588
01-02	25/11	23/59	.390	5/20	.250	17/28	.607	39	1.6	56	40	0	68	2.7	428
Total	84/37	111/282	.394	15/66	.227	110/165	.667	190	2.3	239	142	3	347	4.1	—

### Career HIGHLIGHTS

**Most Points: 16**

**Against:** University of Wisconsin-Parkside  
**When:** January 15, 2000

**Most Rebounds: 8**

**Against:** Saint Joseph's College  
**When:** February 3, 2000

**Most Assists: 10**

**Against:** Saint Joseph's College  
**When:** February 3, 2000

**Most Steals: 9**

**Against:** University of Illinois-Springfield  
**When:** December 28, 2001

**Double-Digit Scoring Efforts: 6**

**Two-Time Academic All-GLVC**



# Meet the 2002-2003 SCREAMING EAGLES



## Sarah McIntosh #21

**5'9" ...Senior...Guard/Forward...Cabery, Illinois**  
**MAJOR: Communication Study**

**2001-02:** Came on strong at the end of the season, recording a season-best 16 points against Bellarmine University in the last week of the regular season and 15 points less than a week later against the University of Wisconsin-Parkside in the GLVC Tournament...played in 30 games, averaging 3.5 ppg and 2.2 rpg. **TRANSFER:** Transferred to USI from Kankakee Community College in Kankakee, Illinois...earned first-team All-Region honors and averaged 20.0 ppg (600 total points) and 5.8 rpg (174 total rebounds)...finished her career at Kankakee ranked sixth in scoring...helped Kankakee to a 55-14 record, a .797 winning percentage, and two regional finals in her career with the Lady Cavaliers. **HIGH SCHOOL:** Graduated from Tri-Point High School in Cullom, Illinois...named All-Area by the *Bloomington/Normal (Illinois) Pantagraph* in 1997-98 and 1998-99 in basketball and volleyball...*The Kankakee Journal* felt the same way about McIntosh's talents naming her All-Area in 1997-98 and 1998-99 in basketball and volleyball. **PERSONAL:** Born January 8, 1981...daughter of Jeff and Cathi Hughes.

### Career HIGHLIGHTS

**Most Points: 16**

**Against:** Bellarmine University  
**When:** February 21, 2002

**Most Rebounds: 5 (four times)**

**Against:** Grace, Ferris State, Saint Joseph's and Kentucky Wesleyan  
**When:** Dec. 15, 2001; Dec. 30, 2001; Feb. 14, 2002; and Feb. 23, 2002

**Most Assists: 4 (twice)**

**Against:** Grace and Ferris State  
**When:** December 15 and 30, 2002

**Double-Digit Scoring Efforts: 3**

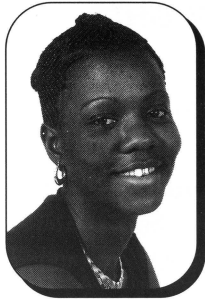
### Eagle PROFILE

**Favorite food:** Chicken nuggets • **Favorite professional athlete:** Ricky Carmichael • **Favorite television show:** "Friends" • **Favorite movie:** "Dazed and Confused" • **Favorite recording artists:** Lynyrd Skynyrd and Aerosmith • **Favorite book:** *The Outsiders* • **If you could go anywhere, where would you go?** California • **Most memorable moment:** Winning the conference championship game • **Most important person(s) in your life:** My mom

### CAREER STATISTICS

	G/GS	FGM/FGA	PCT.	3FGM/FGA	PCT.	FTM/FTA	PCT.	REB.	AVG.	AST.	STL.	BLK.	TP.	AVG.	MIN.
01-02	30/0	36/136	.265	20/64	.312	13/23	.565	65	2.2	39	19	2	105	3.5	434





## Africa Sherrod #33

**6'1" ...Senior...Forward/Center...Ft. Lauderdale, Florida**  
**MAJOR: Criminology**

**2001-02:** Earned honorable mention All-GLVC honors after averaging 11.2 ppg and 6.0 rpg, good enough for third among USI scorers and second among USI rebounders...named GLVC "Player of the Week" two straight weeks after averaging 17.5 points and 7.8 rebounds during a four-game stretch in December that saw the Eagles post regional wins against Northern Michigan University and Ferris State University...posted a season-high 24 points against Ferris State and 11 rebounds against Kentucky Wesleyan College...recorded two double-doubles and double-digit scoring outings in 19 contests, including 20 or more points twice...played in all 33 games, starting 19. **TRANSFER:** Transferred to USI from Tallahassee Community College in Florida...averaged 7.1 ppg and 7.5 rpg per contest for TCC in 2000-01... member of the 2000-01 TCC team which won the Florida State Tournament and placed third nationally. **HIGH SCHOOL:** Played basketball, volleyball, and track and field at Boyd Anderson High School and was the squad's Most Valuable Player as a junior and senior...averaged 12 ppg and 14.0 rpg as a senior. **PERSONAL:** Born January 23, 1981...daughter of Geneva Sherrod.

### Eagle PROFILE

**Favorite food:** Fried chicken • **Favorite professional athlete:** Allen Iverson • **Favorite television show:** "Everybody Loves Raymond" • **Favorite movie:** "The Wash" • **Favorite recording artist:** Eminem • **If you could go anywhere, where would you go?** Africa • **Most memorable moment:** Graduating from high school • **Most important person(s) in your life:** My mother

### CAREER STATISTICS

	G/GS	FGM/FGA	PCT.	3FGM/FGA	PCT.	FTM/FTA	PCT.	REB.	AVG.	AST.	STL.	BLK.	TP.	AVG.	MIN.
01-02	33/19	144/305	.472	7/20	.350	75/103	.728	199	6.0	39	42	10	370	11.2	805

### Career HIGHLIGHTS

**Most Points: 24**

**Against:** Ferris State University  
**When:** December 30, 2001

**Most Rebounds: 11**

**Against:** Kentucky Wesleyan College  
**When:** January 3, 2002

**Most Assists: 4**

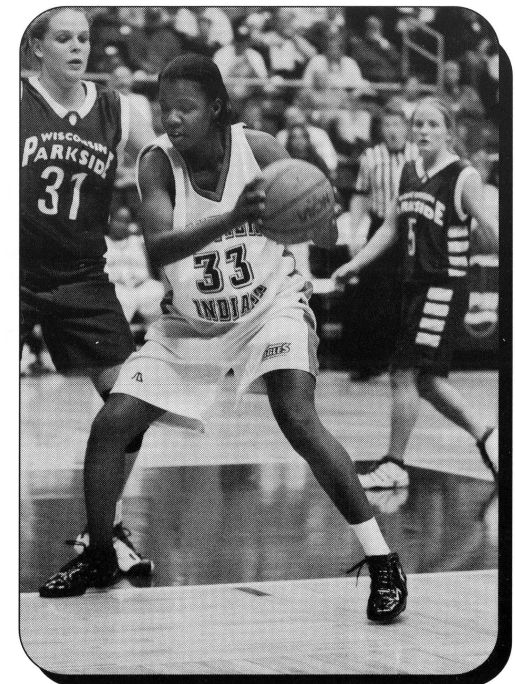
**Against:** Kentucky Wesleyan College  
**When:** January 3, 2002

**Double-Digit Scoring Efforts: 19**

**Double-Digit Rebound Efforts: 4**

**Double-Doubles: 2**

**2001-02 All-GLVC selection**





# Meet the 2002-2003 SCREAMING EAGLES



*April Williams #14*

**5'7" ...Sophomore...Guard...Lyons, Indiana**  
**MAJOR: Political Science**

2001-02: Saw limited action as a freshman, playing in 14 games...earned Academic All-GLVC honors.  
**HIGH SCHOOL:** Lettered in basketball at White River Valley High School...named Associated Press Honorable Mention All-State and *Hoosier Basketball Magazine* All-State as a senior after averaging 8.1 ppg and 3.7 assists...earned All-Conference three straight seasons...named to the *Terre Haute Tribune Star* first team All-Area in 2000-01 and to the *Bloomington Herald-Times* first team All-Area in 1999-2000. **PERSONAL:** Born April 26, 1983...daughter of Michael and Dee Williams.

## Eagle PROFILE

**Favorite food:** Prime rib • **Favorite professional athlete:** Derek Jeter • **Favorite television shows:** "Friends" and "Seventh Heaven" • **Favorite movie:** "Hoosiers" • **Favorite recording artist:** Kenny Chesney • **Favorite Book:** Bible • **If you could go anywhere, where would you go?** Italy • **Most memorable moment:** 2001 IHSSAA State Basketball Finals and getting the Mental Attitude Award • **Most important person(s) in your life:** My parents

## CAREER STATISTICS

	G/GS	FGM/FGA	PCT.	3FGM/FGA	PCT.	FTM/FTA	PCT.	REB.	AVG.	AST.	STL.	BLK.	TP.	AVG.	MIN.
01-02	14/0	1/2	.500	0/0	.000	6/10	.600	1	0.1	3	4	0	8	0.6	72

## Career HIGHLIGHTS

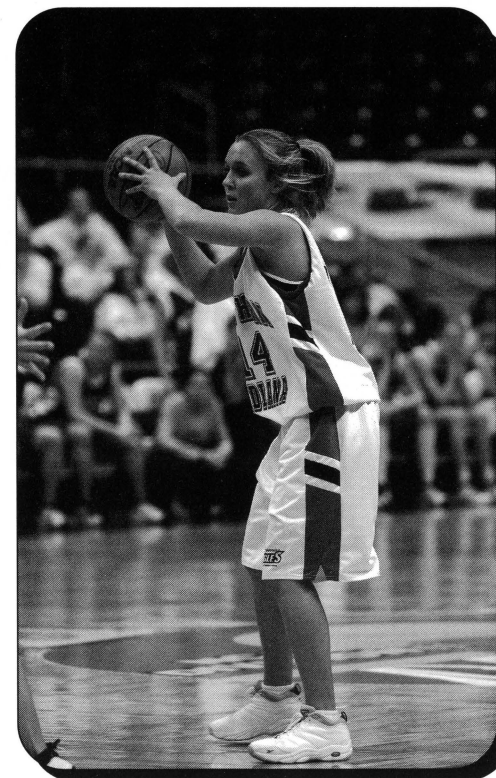
### Most Points: 4

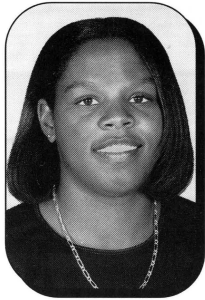
**Against:** University of Wisconsin-Parkside  
**When:** December 1, 2001

### Most Steals: 3

**Against:** South Dakota State  
**When:** November 11, 2001

### 2001-02 Academic All-GLVC





## Amber Calhoun #20

**5'6" ...Sophomore...Guard...Evansville, Indiana**  
**MAJOR: Undecided**

**2001-02:** Saw limited action as a freshman, playing in 16 games...recorded nine assists and 13 rebounds in 104 minutes of action. **HIGH SCHOOL:** Lettered in basketball at Bosse High School...averaged 25.4 ppg, 4.5 rpg, and 4.0 steals as a senior...named All-City and All-SIAC each of her four seasons at BHS...finished her four-year career at BHS with 1,295 points...member of the USA Junior National All-Star team. **PERSONAL:** Born November 7, 1982...daughter of Anthony and Valarie Calhoun.

### Career HIGHLIGHTS

**Most Points: 2 (Four times)**

**Against:** Minn.-Duluth, Lewis, Ill.-Springfield, and Kent. Wesleyan  
**When:** Nov. 10, 2001; Nov. 29, 2001; Dec. 28, 2001; and Feb. 23, 2002

**Most Rebounds: 4**

**Against:** Lewis University  
**When:** November 29, 2001

**Most Assists: 2**

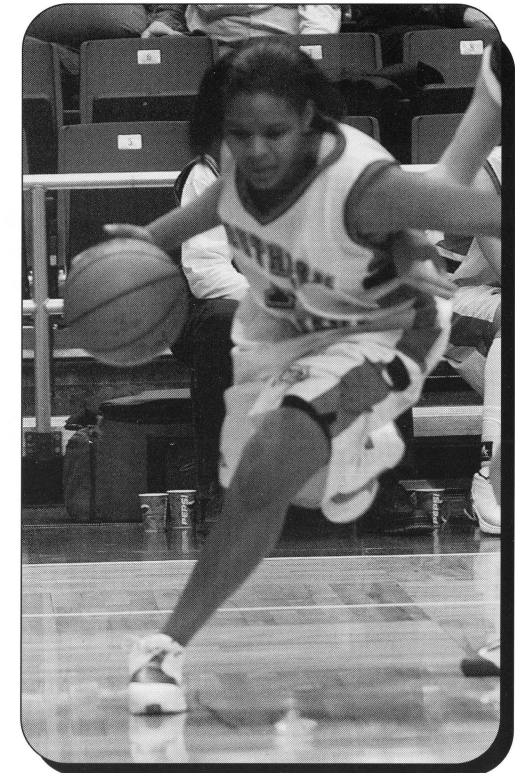
**Against:** Michigan Tech and Lewis Univ.  
**When:** Nov. 19, 2001, and Nov. 29, 2001

### Eagle PROFILE

**Favorite food:** Barbecued ribs • **Favorite professional athlete:** Marion Jones • **Favorite television show:** "Golden Girls" • **Favorite movie:** "Love and Basketball" • **Favorite recording artists:** Pastor Troy and R-Kelly • **Favorite Book:** *Green Eggs and Ham* • **If you could go anywhere, where would you go?** Bahamas • **Most memorable moment:** Going to Florida last season • **Most important person(s) in your life:** My father

### CAREER STATISTICS

	G/GS	FGM/FGA	PCT.	3FGM/FGA	PCT.	FTM/FTA	PCT.	REB.	AVG.	AST.	STL.	BLK.	TP.	AVG.	MIN.
01-02	16/0	2/15	.133	0/6	.000	5/11	.455	13	0.8	9	3	0	9	0.6	104



## Meet the 2002-2003 NEWCOMERS



### Shajuan Lindsey #22

**5'10" ...Junior...Forward...Midlothian, Illinois**  
**MAJOR: Elementary Education**

**TRANSFER:** Transferred to USI from Illinois Central College...named All-Region twice... helped ICC to a 32-3 record and a third place finish in the NJCAA Division II National Tournament in 2001-02...averaged 8.3 points, 3.6 rebounds, 1.9 assists, and 1.7 steals in 32 games as a sophomore...averaged 10.1 points as a freshman...played for the legendary Head Coach Lorene Ramsey. **HIGH SCHOOL:** Earned letters in basketball, track, and cross country at Bremen High School in Midlothian, Illinois...named honorable mention All-State and All-Area in basketball as a junior and senior...also named All-Conference in three straight seasons. **PERSONAL:** Born September 4, 1982...daughter of Michael and Sharon Lindsey.

#### Eagle PROFILE

**Favorite food:** Soul food

**Favorite professional athlete:** Sheryl Swoops

**Favorite television show:** "Friends"

**Favorite movie:** "Love and Basketball"

**Favorite recording artist:** Tank

**Favorite Book:** *The Coldest Winter*

**If you could go anywhere, where would you go?** Carribean Islands

**Most memorable moment:** Graduation

**Most important person(s) in your life:**  
My parents

#### Eagle PROFILE

**Favorite food:** Dairy Queen blizzards

**Favorite professional athlete:** Sammy Sosa

**Favorite television show:** "Real World"

**Favorite movie:** "Monster's Inc."

**Favorite recording artists:** Patty Griffin

**Favorite Book:** *Leading with the Heart*

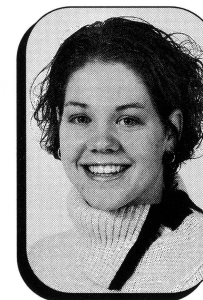
**If you could go anywhere, where would you go?** Hawaii

**Most memorable moment:** Winning the GLVC Tournament in volleyball

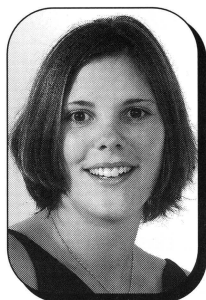
**Most important person(s) in your life:**  
My brother Zac

### Shannon Wells #24

**5'8" ...Junior...Guard/Forward...Merrillville, Indiana**  
**MAJOR: Elementary Education**



**AT USI:** Comes to basketball after four stellar years as a volleyball player...led USI volleyball team to 2002 GLVC Tournament championship, three straight GLVC Green Division championships, 2000 GLVC regular season championship, three straight 20-win seasons, and the 2002 NCAA Division II Great Lakes Regional semifinals...led USI to an 87-35 overall record and a 41-22 mark in the GLVC in four seasons...2002 GLVC "Player of the Year"...selected first-team All-GLVC three times...third player in USI history to be named AVCA All-Region...three-time *Daktronics* All-Great Lakes Region selection...named third-team Verizon Academic All-District V...voted the GLVC Scholar Athlete of the Year for volleyball...named Academic All-GLVC three straight seasons...USI's all-time leader in career service aces (319), kills (1,866), and digs (1,353)...ranks second all-time at USI in career-hitting percentage (.285)...fastest player in USI history to reach 1,000 career kills...led GLVC two straight seasons in total kills (553 and 554)...set USI single-season records for digs (458) and service aces (125). **HIGH SCHOOL:** Lettered in volleyball, basketball, and softball at Merrillville (Indiana) High School...named Most Valuable Player, first team All-Duneland Conference, and first team All-Area as a senior. **PERSONAL:** Born December 8, 1980...daughter of Thomas and Bobbi Wells.



## Megan Nelson #51

**6'2" ...Sophomore...Forward/Center...Clarendon Hills, Illinois**  
**MAJOR: International Business**

**TRANSFER:** Transferred to USI from the College of DuPage where she helped lead the Chaparrals to a 27-4 record and the 2001-02 NJCAA Division III National Championship...averaged 14 points and nine rebounds per game as a freshman...earned first-team All-Conference and All-Region honors as well as third-team All-America honors...named All-Tournament at the College of DuPage Holiday Invitational. **HIGH SCHOOL:** Graduate of Hinsdale South High School in Darien, Illinois...helped HSHS to four conference and regional championships...earned All-Conference and All-Area honors...won eight varsity letters in basketball, soccer, and volleyball...excelled in the classroom where she was a member of the National Honor Society, the French Club, and A.C.E. (Athletes Committed to Excellence). **PERSONAL:** Born May 14, 1982...daughter of Brett and Kim Nelson.

### Eagle **PROFILE**

**Favorite foods:** Mexican, ice cream, chocolate

**Favorite professional athletes:** Ray Allen and Sheryl Swoopes

**Favorite television show:** "Real World"

**Favorite movies:** "Dirty Dancing" and "Top Gun"

**Favorite recording artists:** Eve and The Dave Matthews Band

**Favorite book:** *Raise the Roof*

**If you could go anywhere, where would you go?** Australia or South Africa

**Most memorable moment:** Winning nationals

**Most important person(s) in your life:** Parents

### Eagle **PROFILE**

**Favorite food:** Pizza and Chinese

**Favorite professional athlete:** Michael Jordan

**Favorite television show:** "Friends"

**Favorite movie:** "Love and Basketball"

**Favorite recording artist:** Lois Armstrong

**Favorite book:** *The Girl who loved Tom Gordon*

**If you could go anywhere, where would you go?** Jamaica

**Most memorable moment:** Qualifying for nationals in 8th grade

**Most important person(s) in your life:** My sister

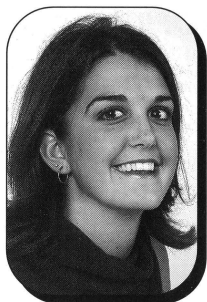
## Hollie Johnson #10

**5'11" ...Freshman...Forward/Center...Bedford, Indiana**  
**MAJOR: Psychology**



**HIGH SCHOOL:** Graduated from Bedford North High School in Bedford, Indiana...earned All-Conference honors as a junior and senior...was a Hoosier Basketball Top 100 senior in 2002...earned All-State honorable mention honors...member of the French Club, Pep Club, Lettermen's Club, and the Fellowship of Christian Athletes. **PERSONAL:** Born June 16, 1984...daughter of Shannon and John Craig.

## Meet the 2002-2003 NEWCOMERS



### Ashley Green #11

**5'11" ...Freshman...Guard/Forward...Otterbein, Indiana**  
**MAJOR: Elementary Education**

**HIGH SCHOOL:** Graduated from Benton Central High School in Oxford, Indiana, where she earned 11 varsity letters in basketball, tennis, track, and volleyball...named one of the top 50 players in the state both her junior and senior season...first-team All-Area performer...earned All-Hoosier Conference in 2001 and 2002...averaged 17 points per contest, shot 82 percent from the charity stripe, and led BCHS with 72 steals as a senior in 2001-02...second on team in field goal percentage, rebounds, blocks, and assists...helped her AAU team, the Lady Pistols, to an 11th-place showing at the 2001 state tournament and an eighth-place finish at the 1998 state tournament. **PERSONAL:** Born May 5, 1984...daughter of Dan and Gail Green.

#### Eagle PROFILE

**Favorite food:** Fettuccine alfredo

**Favorite professional athlete:** Michael Jordan

**Favorite television show:** "Friends"

**Favorite movie:** "Dumb and Dumber"

**Favorite recording artist:** Faith Hill

**Favorite books:** *The Summer Sisters* and *The Notebook*

**If you could go anywhere, where would you go?** Heaven and back

**Most memorable moment:** Graduation

**Most important person(s) in your life:** My little brother, Kordell

#### Eagle PROFILE

**Favorite food:** Authentic Mexican and Italian

**Favorite professional athlete:** Michael Jordan

**Favorite television show:** "Will and Grace"

**Favorite movies:** "Dirty Dancing" and "Meet the Parents"

**Favorite recording artist:** Anastacia

**Favorite book:** *Where the Heart Is*

**If you could go anywhere, where would you go?** Hawaii or Paris

**Most memorable moments:** Running into street signs and receiving MVP of Metro All-Star game

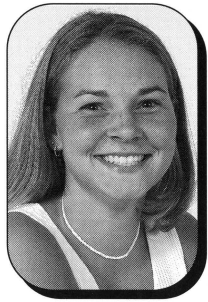
**Most important person(s) in your life:** My family and close friends

### Amanda Lechlitner #15

**5'8" ...Freshman...Guard/Forward...Mishawaka, Indiana**  
**MAJOR: Nursing**

**HIGH SCHOOL:** Graduated from Penn High School in Mishawaka, Indiana...earned Northern Indiana All-Conference honors and was selected to the 2002 *South Bend Tribune* All-Metro Team...helped lead Penn High School to a 17-7 overall record and the 2002 sectional championship as a senior in 2001-02...was named the *South Bend Tribune* All-Metro Most Valuable Player...was the Mishawaka Kiwanis Club Athlete of the Month (December) and the T.V. Channel 46 Athlete of the Month (February)...earned All-Tournament honors at the 2001 Penn Classic...averaged 9.6 points, 4.1 rebounds, 2.0 steals, and 1.9 assists per game as a senior...averaged 6.1 ppg, 2.0 rpg, 1.5 apg, and 1.5 spg as a junior in 2000-01...played in the Junior Nationals in Las Vegas, Nevada...earned All-Northern Indiana Conference honorable mention in track as a junior. **PERSONAL:** Born March 10, 1984...daughter of Craig and Lori Lechlitner.





## Meghann Schenk #34

**5'11" ...Freshman...Forward...Evansville, Indiana**  
**MAJOR: Biology**

**HIGH SCHOOL:** Graduated from Mater Dei High School...attending USI on a Presidential Scholarship...earned second-team All-Metro honors after 9.8 ppg, 5.7 rpg, and 1.4 spg as a senior in 2001-02...helped MDHS to the 2002 sectional championship...earned second-team All-Metro honors...earned Academic All-State and Academic All-City honors in both basketball and volleyball...won the 2002 Kiwanis Award and 2002 Army Scholar Athlete Award...co-valedictorian at MDHS and a member of the Student Council. **PERSONAL:** Born August 9, 1984...daughter of Brian and Karen Schenk.

### Eagle PROFILE

**Favorite food:** Buttered noodles

**Favorite professional athletes:** Scott Rolen and Jalen Rose

**Favorite television show:** "Friends"

**Favorite movie:** "Grease"

**Favorite recording artists:** Faith Hill and Kenny Chesney

**Favorite book:** *Gone with the Wind*

**If you could go anywhere, where would you go?** Hawaii

**Most memorable moment:** Spending a week in Florida with my best friends

**Most important person(s) in your life:** parents

### Eagle PROFILE

**Favorite food:** Barbecued ribs

**Favorite professional athletes:** Marion Jones and Michael Jordan

**Favorite television show:** "Friends"

**Favorite movie:** "Love and Basketball"

**Favorite recording artists:** Mary J. Blige and Musiq Soulchild

**Favorite book:** *Chicken Soup for the Teenage Soul*

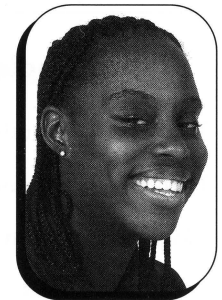
**If you could go anywhere, where would you go?** South Africa and Paris

**Most memorable moment:** Winning the national championship

**Most important person(s) in your life:** My mother

## Kennitra Johnson

**5'8" ...Junior...Guard...New Albany, Indiana**  
**MAJOR: Physical Education**



**2002-03:** Will redshirt in 2002-03. **TRANSFER:** At *Purdue*-Transferred to USI from Purdue University where she spent the first semester on the basketball team. At *UConn*-Member of the University of Connecticut's 2000 national championship team...played in all 37 games, averaging 22.4 points per game, as a freshman in 1999-00...named to Big East All-Rookie team after averaging 7.2 points, 2.5 assists, and 2.0 steals per contest...ranked second on the team in steals and third in assists as a freshman...scored in double-figures 10 times as a freshman, posting a career-high 18 points against the University of Illinois and the University of Pittsburgh...played in 34 games, starting three and averaging 17.9 minutes per game, as a sophomore for the Huskies' 2001 NCAA I Semifinalist squad...contributed 5.7 points, 1.4 rebounds, and 1.6 steals per game. **HIGH SCHOOL:** Graduated from New Albany High School where she was a first-team Parade All-American...named MVP of the 1999 Nike/WBCA All-America game...ranked the nation's No. 17 senior by Blue Star...led NAHS to the Class 4A state championship as a senior, averaging 21.0 points, 4.0 rebounds, 5.0 assists, and 5.0 steals per game...averaged 19.9 points and 6.7 rebounds as a junior...finished career with 1,837 points...one of 12 heralded Hoosier girls' basketball players named to the IHSAA First Silver Era Team. **PERSONAL:** Born December 13, 1980...daughter of Charlotte Sutton.

## Breezing through the years of success

The University of Southern Indiana women's basketball team enters the 2002-03 campaign in search of its seventh NCAA Division II Tournament appearance in nine seasons. The last eight seasons have not only produced six NCAA II Tournament appearances, but saw the Screaming Eagles make it to the NCAA II Sweet Sixteen three times and to the Elite Eight twice. USI finished as the runner-up in 1997.

In addition to its NCAA II Tournament success, USI has also been a powerhouse in the Great Lakes Valley Conference. The Eagles have won four GLVC regular season titles since 1995 and have won the GLVC Tournament a record three times.

Entering this season, the Eagles are the two-time defending GLVC Tournament Champions and will be looking for an unprecedented third consecutive GLVC Tournament Championship.

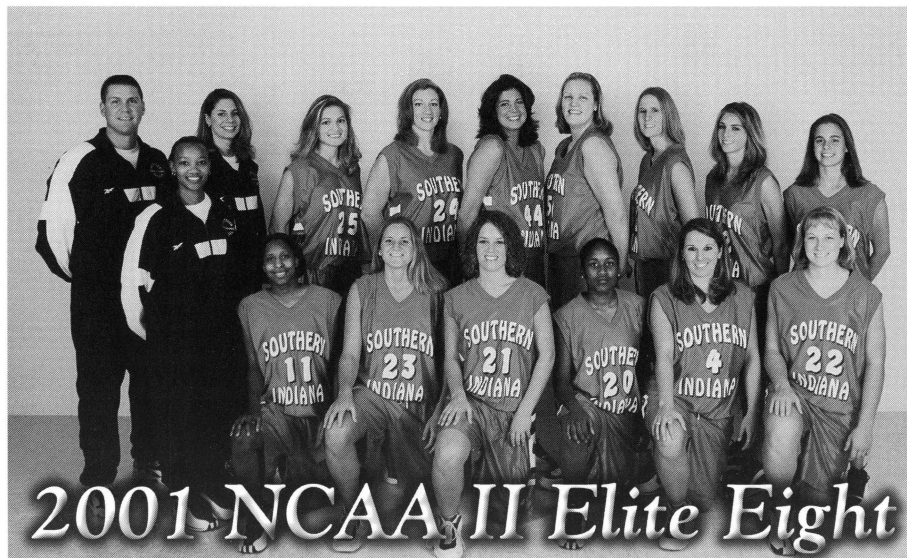
*Note: Since 1994, the Eagles have had five players earn All-America honors.*



After starting out the 1996-97 season with a 1-1 record, the Eagles won 29 straight games and won the GLVC and NCAA II Great Lakes Regional Championship. USI went on to win its first two games in the NCAA II Elite Eight, before falling in the national championship game to North Dakota. USI also became the first and only team in GLVC history to go 20-0 in conference play. USI finished the season with a school-record 30-2 mark and finished second in the national rankings.

After missing out on the NCAA II Tournament in 1999 and 2000, the Eagles exploded back onto the national stage in 2001. The Eagles finished the 2000-01 season with a 28-4 mark and won a share of the GLVC regular season title. The Eagles went on to win the GLVC Tournament championship as well as the NCAA II Great Lakes Regional Championship for the second time in school history.

*Quick fact: The Eagles have hosted the NCAA II Great Lakes Regional Tournament twice. However, the two times the Eagles have gone to the Elite Eight, they won the regional tournament in the state of Michigan.*



## NON-CONFERENCE SCHEDULE

### *Eagle Club Classic*

**Friday, November 22 – Saturday, November 23**

*Friday, Nov. 22: Jefferson City, TN*  
at **CARSON-NEWMAN COLLEGE**

Location: Jefferson City, TN

Enrollment: 2,336

Affiliation: NCAA II

Conference: South Atlantic

Nickname: Lady Eagles

Head Coach: Dean Walsh

2001-02 Record: 12-14 overall (8-6 SAC)

*Saturday, Nov. 23: Jefferson City, TN*  
vs. **MARS HILL COLLEGE**

Location: Mars Hill, NC

Enrollment: 1,200

Affiliation: NCAA II

Nickname: Lady Lyons

Conference: South Atlantic

Head Coach: Mandy Mattox

2001-02 Record: 26-5 overall (11-3 SAC)

NCAA II Elite Eight

*Saturday, Dec. 14: PAC Arena*

**MARIAN COLLEGE**

Location: Indianapolis, IN

Enrollment: 1,300

Affiliation: NAIA II

Nickname: Lady Knights

Conference: Mid-Central

Head Coach: Mike Springer

2001-02 Record: 20-11 (10-4 MCC)

*Tuesday, Dec. 17: PAC ARENA*  
**UNIVERSITY OF ILLINOIS-SPRINGFIELD**

Location: Springfield, IL

Enrollment: 4,300

Affiliation: NAIA

Nickname: Prairie Stars

*(University of Illinois-Springfield continued...)*

Conference: Region IV Independent

Head Coach: Wanda Nettles

2001-02 Record: 13-18

*Friday, Dec. 20: Houghton, MI*

at **MICHIGAN TECH UNIVERSITY**

Location: Houghton, MI

Enrollment: 6,300

Affiliation: NCAA II

Nickname: Huskies

Conference: Great Lakes Intercollegiate Athletic

Head Coach: Darla Olson

2001-02 Record: 19-10 overall (11-7 GLIAC)

### **GLIAC/GLVC Challenge**

**Saturday, December 28 – Sunday, December 29**

*Saturday, Dec. 28: PAC Arena*

**NORTHWOOD UNIVERSITY**

Location: MIDLAND, MI

*(Northwood continued...)*

Enrollment: 2,100

Affiliation: NCAA II

Conference: Timberwolves

Nickname: Great Lakes Intercollegiate Athletic

Head Coach: Kelli Parker

2001-02 Record: 6-19 overall (2-16 GLIAC)

*Sunday, Dec. 29: PAC Arena*

**FERRIS STATE UNIVERSITY**

Location: Big Rapids, MI

Enrollment: 11,074

Affiliation: NCAA II

Conference: Great Lakes Intercollegiate Athletic

Nickname: Bulldogs

Head Coach: Tracey Fisk

2001-02 Record: 14-12 overall (10-8 GLIAC)





## GREAT LAKES VALLEY CONFERENCE SCHEDULE

Monday, Dec. 2: at Louisville, KY  
 Thursday, Jan. 16: PAC ARENA  
**BELLARMINI UNIVERSITY**  
 Location: Louisville, KY  
 Enrollment: 2,600  
 Nickname: Knights  
 Head Coach: David Smith  
 2001-02 Record: 18-10  
 2001-02 GLVC Record/Finish: 12-8/t-4th  
 GLVC Tournament Finish: Lost in semi-finals

Thursday, Dec. 5: PAC ARENA  
 Sat., February 15: at Indianapolis, IN  
**UNIVERSITY OF INDIANAPOLIS**  
 Location: Indianapolis, IN  
 Enrollment: 4,000  
 Nickname: Greyhounds  
 Head Coach: Teri Moren  
 2001-02 Record: 15-11  
 2001-02 GLVC Record/Finish: 11-9/6th  
 GLVC Tournament Finish: Lost in first round

Saturday, Nov. 30: Owensboro, KY  
 Saturday, Feb. 8: PAC ARENA  
**KENTUCKY WESLEYAN COLLEGE**  
 Location: Owensboro, KY  
 Enrollment: 800  
 Nickname: Panthers  
 Head Coach: Tandy Bradford  
 2001-02 Record: 6-21  
 2001-02 GLVC Record/Finish: 2-18/11th

Thursday, Jan. 2: at Romeoville, IL  
 Sat., February 22: PAC ARENA  
**LEWIS UNIVERSITY**  
 Location: Romeoville, IL  
 Enrollment: 4,400  
 Nickname: Flyers  
 Head Coach: Brian Michalak

(Lewis University continued...)  
 2001-02 Record: 7-19  
 2001-02 GLVC Record/Finish: 4-16/10th

Thursday, Jan. 9: PAC ARENA  
 Saturday, March 1: at St. Louis, MO  
**UNIVERSITY OF MISSOURI-ST. LOUIS**  
 Location: St. Louis, MO  
 Enrollment: 9,600  
 Nickname: Riverwomen  
 Head Coach: Shelly Ethridge  
 2001-02 Record: 9-17  
 2000-01 GLVC Record/Finish: 6-14/9th

Saturday, Jan. 18: PAC ARENA  
 Thursday, Feb. 13: at Highland Heights, KY  
**NORTHERN KENTUCKY UNIVERSITY**  
 Location: Highland Heights, KY  
 Enrollment: 12,900  
 Nickname: Norse  
 Head Coach: Nancy Winstel  
 2001-02 Record: 26-7  
 2001-02 GLVC Record/Finish: 17-3/1st  
 GLVC Tournament Finish: Runner-up  
 NCAA II Elite Eight Participant

Saturday, Feb. 1: PAC ARENA  
 Thursday, Feb. 27: at Quincy, IL  
**QUINCY UNIVERSITY**  
 Location: Quincy, IL  
 Enrollment: 1,200  
 Nickname: Lady Hawks  
 Head Coach: Larry Just  
 2001-02 Record: 18-9  
 2001-02 GLVC Record/Finish: 4-16/10th  
 GLVC Tournament Finish: Lost in semi-finals

Saturday, Dec. 7: PAC ARENA  
 Thursday, Jan. 23: at Rensselaer, IN  
**SAINT JOSEPH'S COLLEGE**  
 Location: Rensselaer, IN  
 Enrollment: 1,000  
 Nickname: Pumas  
 Head Coach: John Raff  
 2001-02 Record: 9-18  
 2000-01 GLVC Record/Finish: 8-12/8th  
 GLVC Tournament Finish: Lost in first round

Saturday, Jan. 4: at Edwardsville, IL  
 Thursday, Jan. 30: PAC ARENA  
**SOUTHERN ILLINOIS UNIVERSITY EDWARDSVILLE**  
 Location: Edwardsville, IL  
 Enrollment: 11,000  
 Nickname: Cougars  
 Head Coach: Wendy Hedberg  
 2001-02 Record: 14-13  
 2001-02 GLVC Record/Finish: 12-8/t-4th  
 GLVC Tournament Finish: Lost in first round

Saturday, Jan. 25: at Kenosha, WI  
 Thursday, Feb. 20: PAC ARENA  
**UNIVERSITY OF WISCONSIN-PARKSIDE**  
 Location: Kenosha, WI  
 Enrollment: 5,400  
 Nickname: Rangers  
 Head Coach: Jenny Knight (Interim)  
 2001-02 Record: 9-16  
 2001-02 GLVC Record/Finish: 9-11/7th  
 GLVC Tournament: Lost in first round



Player	GP-GS	Min-Avg	TOTAL		3-PTS		FT-FTA	Pct	REBOUNDS				PF	FO	A	TO	Blk	Stl	Pts	Avg
			FG-FGA	Pct	3FG-FGA	Pct			Off	Def	Tot	Avg								
22 Jessica Stuckman	33-29	868-26.3	258-453	.570	3-12	.250	157-191	.822	109	135	244	7.4	100	4	51	78	8	77	676	20.5
20 Jasmine Moore	32-31	927-29.0	171-404	.423	62-149	.416	46-67	.687	22	59	81	2.5	62	0	143	107	8	108	450	14.1
33 Africa Sherrod	33-19	805-24.4	144-305	.472	7-20	.350	75-103	.728	72	127	199	6.0	78	3	39	90	10	42	370	11.2
12 Casey Hughes	33-32	896-27.2	129-324	.398	35-94	.372	66-81	.815	61	85	146	4.4	68	1	82	54	21	62	359	10.9
24 Michelle Irwin	33-18	590-17.9	85-194	.438	0-1	.000	92-150	.613	66	116	182	5.5	109	4	16	63	19	26	262	7.9
10 Erin Wall	33-23	793-24.0	77-200	.385	40-107	.374	37-53	.698	14	44	58	1.8	73	1	95	61	7	41	231	7.0
21 Sarah McIntosh	30-0	434-14.5	36-136	.265	20-64	.313	13-23	.565	26	39	65	2.2	31	0	39	30	2	19	105	3.5
04 Bethany Miller	25-11	428-17.1	23-59	.390	5-20	.250	17-28	.607	10	29	39	1.6	45	1	56	29	0	40	68	2.7
11 Mevett Wooley	33-2	441-13.4	30-75	.400	7-20	.350	13-23	.565	16	27	43	1.3	60	2	44	41	0	36	80	2.4
51 Kim Witkowiak	33-0	240-7.3	30-72	.417	0-0	.000	16-23	.696	22	37	59	1.8	51	1	8	29	16	2	76	2.3
34 Stacy Karzin	14-0	52-3.7	9-23	.391	0-0	.000	5-16	.313	4	10	14	1.0	12	0	0	6	5	1	23	1.6
15 Amber Calhoun	16-0	104-6.5	2-15	.133	0-6	.000	5-11	.455	3	10	13	0.8	18	0	9	20	0	3	9	0.6
14 April Williams	14-0	72--5.1	1-2	.500	0-0	.000	6-10	.600	0	1	1	0.1	11	0	3	5	0	4	8	0.6
TEAM									53	59	112	3.4	0		2					
Southern Indiana	33	6650	995-2262	.440	179-493	.363	548-779	.703	478	778	1256	38.1	718	17	585	615	96	461	2717	82.3
Opponents	33	6650	791-1814	.436	114-401	.284	607-836	.726	374	917	1291	39.1	641	-	459	900	64	285	2303	69.8

DATE	OPPONENT	W/L	SCORE	DATE	OPPONENT	W/L	SCORE
11/9/01^	vs. Nebraska-Omaha	W	80-77	1/19/02*	at Saint Joseph's (IN)	WOT	76-73
11/10/01^	vs. Minnesota-Duluth	W	89-70	1/24/02*	NORTHERN KENTUCKY	W	93-74
11/11/01^	vs. South Dakota State	LOT	104-106	1/26/02*	BELLARMINE	L	72-78
11/19/01	MICHIGAN TECH	W	95-79	2/2/02*	MISSOURI-ST. LOUIS*	W	90-67
11/24/01*	at Missouri-St. Louis	W	69-60	2/7/02*	at SIU Edwardsville	L	59-70
11/26/01*	at Quincy	L	72-84	2/9/02*	at Lewis	W	79-74
11/29/01*	LEWIS	W	83-53	2/14/02*	SAINT JOSEPH'S (IN)	W	91-64
12/1/01*	WISCONSIN-PARKSIDE	W	77-60	2/16/02*	INDIANAPOLIS	W	76-63
12/6/01*	at Indianapolis	W	80-68	2/21/02*	at Bellarmine	W	96-85
12/8/01*	at Northern Kentucky	L	71-81	2/23/02*	at Kentucky Wesleyan	W	91-63
12/15/01	GRACE	W	87-62	2/27/02**	vs. Wisconsin-Parkside	W	76-48
12/18/01	NORTHERN MICHIGAN	W	100-84	3/1/02**	vs. Quincy	W	90-80
12/28/01	ILLINOIS-SPRINGFIELD	W	89-56	3/2/02**	vs. Northern Kentucky	W	89-79
12/30/01	at Ferris State	W	83-78	3/8/02***	HILLSDALE	W	84-63
1/3/02*	KENTUCKY WESLEYAN	W	88-61	3/9/02***	NORTHERN KENTUCKY	L	66-69
1/10/02*	QUINCY	W	71-59				
1/12/02*	SIU EDWARDSVILLE	W	74-63				
1/17/02*	at Wisconsin-Parkside	W	77-52				

\* Denotes conference game; ^ Denotes Disney Tip-off Classic;  
 \*\* Denotes GLVC Tournament; \*\*\* Denotes NCAA II GL Regional Tournament

# 2001-2002 FINAL GLVC RESULTS



## Great Lakes Valley Conference 2001-2002 FINAL Women's Basketball Standings www.glvcsports.com

	W-L	Pct.	W-L	Pct.	Home	Away	Neut.	Streak
yz-Northern Kentucky	17-3	.850	26-7	.788	13-2	8-3	2-3	L-1
<b>z-SOUTHERN INDIANA</b>	<b>16-4</b>	<b>.800</b>	<b>27-6</b>	<b>.818</b>	<b>13-1</b>	<b>8-3</b>	<b>5-1</b>	<b>L-1</b>
Quincy	13-7	.650	18-9	.667	11-1	4-8	3-0	L-1
Bellarmine	12-8	.600	18-10	.643	10-3	7-6	1-1	L-1
SIU-Edwardsville	12-8	.600	14-13	.519	10-2	4-6	0-4	L-3
Indianapolis	11-9	.550	15-11	.577	8-5	6-5	1-1	L-1
Wisconsin-Parkside	9-11	.450	9-16	.350	6-7	3-8	0-1	L-1
St. Joseph's	8-12	.400	9-18	.333	7-5	2-9	0-2	L-1
Missouri-St. Louis	6-14	.300	9-17	.346	6-6	3-11	0-0	W-1
Lewis	4-16	.200	7-19	.269	7-7	0-12	0-0	L-5
Kentucky Wesleyan	2-18	.100	6-21	.222	5-9	1-10	0-2	L-9

y-NCAA II Elite Eight Participant; z-NCAA II Participant

## 2001-2002 All-GLVC Teams

### First Team

Player, School	Ht.	Year	Pos.	Hometown
Michelle Cottrell, NKU	6'0"	Sr.	F	Florence, KY
<b>Jessica Stuckman, USI</b>	<b>5'11"</b>	<b>So.</b>	<b>F</b>	<b>Quincy, IL</b>
Nickie Randall, BU	5'4"	Jr.	G	Washington, KY
Jill Unnerstall, Quincy	5'10"	Jr.	F	Washington, MO
<b>Jasmine Moore, USI</b>	<b>5'6"</b>	<b>Sr.</b>	<b>G</b>	<b>Chicago, IL</b>

### Second Team

Ruth Kippling, SIUE	6'1"	Jr.	F	Quincy, IL
Lynne Johnson, BU	5'11"	So.	F	Elizabeth, IN
Heather Allen, SJC	5'9"	So.	F	Frankfort, IN
Shanta Bowens, BU	6'1"	Jr.	C	Louisville, KY
Kristen Lowry, Indy	6'2"	Jr.	F	Logansport, IN
Bridget Flanagan, NKU	5'10"	Jr.	G	Cincinnati, OH

### Honorable Mention

**Casey Hughes, USI;** Lisa Farrell, Quincy; Tiffany Kelper, Quincy; Amy Mobley, NKU; Suzie Smith, NKU; **Africa Sherrod, USI;** Sammy Kromm, UWP; Erin Moran, Indy; Sara Strahm, Indy; Lynette Wellen, UMSL

### Player-of-the-Year

Michelle Cottrell, NKU

### Coach-of-the-Year

Larry Just, Quincy

### Freshman-of-the-Year

Sammy Kromm, UWP

## USI WOMEN'S BASKETBALL ALL-TIME RECORDS

### Career: Leading Scorers

1. LeAnn Freeland (1993-97) . . . . .	2,269
2. Eileen Weber (1994-98) . . . . .	1,847
3. Kathy Lauck (1990-94) . . . . .	1,573
4. Casey Hughes (1998-02) . . . . .	1,418
5. Shelly Scott (1987-92) . . . . .	1,414
6. Peggy Witsman (1982-86) . . . . .	1,267
7. Connie VanMeter (1983-87) . . . . .	1,163
8. Natalie Glaser (1998-01) . . . . .	1,076
9. Jessica Stuckman (2000-02) . . . . .	1,032
10. Deb Pope (1992-96) . . . . .	998
11. Penny Dietz (1985-87) . . . . .	945
12. Holly Billings (1978-81) . . . . .	889
13. Mindy Gingerich (1996-00) . . . . .	843
14. Elizabeth Prewett (1997-01) . . . . .	837
15. Glenna Bower (1991-94) . . . . .	819
16. Debbie Frank (1983-87) . . . . .	808
17. Jennifer Donner (1996-00) . . . . .	803
18. Adrienne Seitz (1995-99) . . . . .	780
19. Laura Perek (1990-94) . . . . .	776
20. Jasmine Moore (2000-02) . . . . .	751

### Career: Leading Rebounders

1. LeAnn Freeland (1993-97) . . . . .	961
2. Eileen Weber (1994-98) . . . . .	842
3. Kathy Lauck (1990-94) . . . . .	791
4. Shelly Scott (1987-92) . . . . .	745
5. Vicky Branson (1982-86) . . . . .	682
Debbie Frank (1983-87) . . . . .	682
6. Debbie Schutte (1975-78) . . . . .	600
7. Elizabeth Prewett (1997-01) . . . . .	589
8. Casey Hughes (1998-02) . . . . .	553
9. Mary Beaven (1978-81) . . . . .	542
10. Connie VanMeter (1983-87) . . . . .	465
11. Adrienne Seitz (1995-99) . . . . .	460
12. Annette Elkin (1991-94) . . . . .	439
13. Holly Billings (1978-81) . . . . .	425
14. Cathy Tepoch (1994-99) . . . . .	415

### Career: Leaders in Games Played

1. Adrienne Seitz (1995-99) . . . . .	120
2. Jennifer Donner (1996-00) . . . . .	117
3. Mindy Gingerich (1996-00) . . . . .	116
4. LeAnnFreeland (1993-97) . . . . .	115
Eileen Weber (1994-98) . . . . .	115

### Career: Most Field Goals Made

1. LeAnn Freeland (1993-97) . . . . .	887
2. Eileen Weber (1994-98) . . . . .	705
3. Kathy Lauck (1990-94) . . . . .	622
4. Shelly Scott (1987-92) . . . . .	504
5. Peggy Witsman (1982-86) . . . . .	496

### Career: Most Field Goals Attempted

1. LeAnn Freeland (1993-97) . . . . .	1,449
2. Eileen Weber (1994-98) . . . . .	1,317
3. Kathy Lauck (1990-94) . . . . .	1,258
4. Peggy Witsman (1982-86) . . . . .	1,245
5. Casey Hughes (1998-02) . . . . .	1,153

### Career: Most Free Throws Made

1. LeAnn Freeland (1993-97) . . . . .	491
2. Shelly Scott (1987-92) . . . . .	385
3. Eileen Weber (1994-98) . . . . .	348
4. Kathy Lauck (1990-94) . . . . .	329
5. Casey Hughes (1998-02) . . . . .	282

### Career: Most Free Throws Attempted

1. LeAnn Freeland (1993-97) . . . . .	738
2. Shelly Scott (1987-92) . . . . .	494
3. Kathy Lauck (1990-94) . . . . .	484
4. Eileen Weber (1994-98) . . . . .	474
5. Peggy Witsman (1982-86) . . . . .	387

### Career: Most Three-point Goals Made

1. Deb Pope (1992-96) . . . . .	184*
2. Jennifer Donner (1996-00) . . . . .	129
3. Glenna Bower (1991-94) . . . . .	112
4. Natalie Glaser (1998-01) . . . . .	106
5. Casey Hughes (1998-02) . . . . .	101

\*GLVC Career Record with 122 in conference play.

### Career: Most Three-point Field Goals Attempted

1. Deb Pope (1992-96) . . . . .	416*
2. Jennifer Donner (1996-00) . . . . .	334
3. Glenna Bower (1991-94) . . . . .	326
4. Casey Hughes (1998-02) . . . . .	314
5. Missy Hart (1991-95) . . . . .	287

\*GLVC Career Record with 284 in conference play.

### Career: Most Assists

1. Adrienne Seitz (1995-99) . . . . .	565
2. Connie VanMeter (1983-87) . . . . .	353
3. Sharon Agee (1986-89) . . . . .	316
4. Jasmine Moore (2000-02) . . . . .	293
5. Daria Weitekamp (1994-96) . . . . .	291

### Career: Most Steals

1. Casey Hughes (1998-02) . . . . .	214
2. Adrienne Seitz (1995-99) . . . . .	198
3. Eileen Weber (1994-98) . . . . .	188
4. Jasmine Moore (2000-02) . . . . .	177
5. LeAnn Freeland (1993-97) . . . . .	167

## GAME & SEASON RECORD BOOK

### Most Points

GAME-(50) LeAnn Freeland vs. IPFW, Jan. 28,1995  
 SEASON- (676) Jessica Stuckman, 2001-02\*  
                   (674) LeAnn Freeland, 1996-97\*\*  
 \*Played in 33 games; \*\*Played in 32 games

### Most Field Goals Made

GAME-(20) LeAnn Freeland vs. Ashland, Jan. 26, 1995  
 SEASON-(265) LeAnn Freeland, 1994-95

### Most Field Goals Attempted

GAME-(28) Holly Billings vs. Columbia College, 1979-80  
 SEASON-(453) Jessica Stuckman, 2001-02

### Most Free Throws Made

GAME-(19) Shelly Scott vs. Indianapolis, 1988-89  
 SEASON-(196) Shelly Scott, 1988-89

### Most Consecutive Free Throws

(31) Kathy Lauck, 1993-94

### Most Three-point Field Goals Made

GAME-(8) Deb Pope vs. Kentucky State, Feb. 18, 1995\*  
 SEASON-(76) Deb Pope, 1995-96

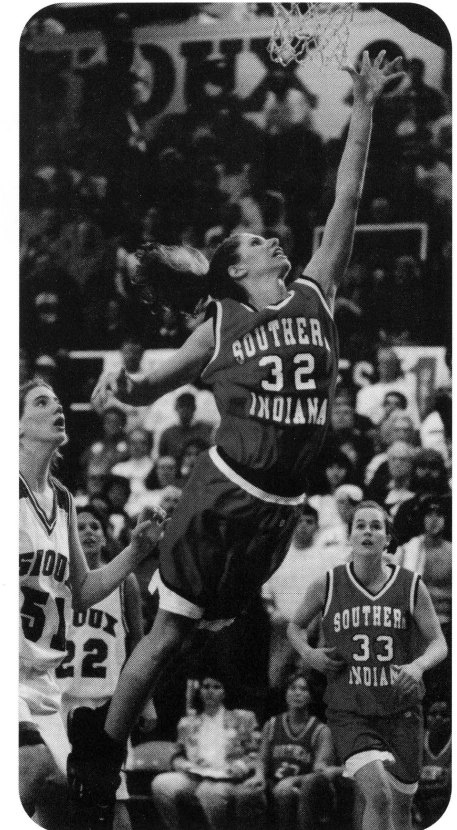
\*Tied the GLVC record

### Most Three-point Field Goals Attempted

GAME-(14) Deb Pope vs. Kentucky State, Feb. 18, 1995; vs. Lewis, Feb. 4, 1995  
 SEASON-(188) Deb Pope, 1995-96

### Most Rebounds

GAME-(21) Debbie Schutte vs. Oakland City1977; (21) Jill Padgett vs. Kentucky Wesleyan 1977  
 SEASON-(281) Shelly Scott, 1988-89



# Women's Basketball RECORD BOOK



## GAME & SEASON RECORD BOOK

### Most Steals

GAME-(10) Angie Cacello vs. Kentucky Wesleyan, Feb. 22, 1997  
SEASON-(108) Jasmine Moore, 2001-02

### Most Assists

GAME-(14) Adrienne Seitz vs. SIU Edwardsville, Feb. 9, 1999  
SEASON-(194) Adrienne Seitz, 1998-99

### Most Blocks

GAME-(10) LeAnn Freeland vs. Indianapolis, Dec. 29, 1994  
SEASON-(69) LeAnn Freeland, 1994-95  
CAREER-(194) LeAnn Freeland, 1993-97

### Best Field Goal Percentage (Minimum of 10 attempts)

GAME-(1.000, 12-12) Jessica Stuckman vs. Missouri-St. Louis, Feb. 2, 2002  
SEASON-(.652, 259-397) LeAnn Freeland, 1996-97  
CAREER-(.612, 887-1449) LeAnn Freeland, 1993-97 (Min. 300 attempts)

### Best Free Throw Percentage (Minimum of 10 attempts)

GAME-(1.000, 14-14) Shelly Scott vs. St. Joseph's, 1988-89; (1.000, 10-10) Jessica Stuckman vs. Quincy, March 1, 2002  
SEASON-(.855, 59-69) Cindy Huckabee, 1980-81  
CAREER-(.779, 385-494) Shelly Scott, 1987-92 (Min. 200 Attempts)

### Best Three-point Field Goal Percentage (Minimum of 5 attempts)

GAME-(.857, 6-7) Deb Pope vs. Bellarmine, 1-21-95  
SEASON-(.507, 74-146) Deb Pope, 1994-95 (Min. 40 Att.)  
CAREER-(.442, 184-416) Deb Pope, 1992-96 (Min. 90 Att.)

### Highest Rebounding Average

SEASON-(15.1) Debbie Schutte, 1976-77  
CAREER-(14.3) Debbie Schutte, 1975-77

### Highest Scoring Average

SEASON-(24.4) LeAnn Freeland, 1994-95  
CAREER-(19.7) LeAnn Freeland, 1993-97

## TEAM RECORDS

### Most Points

GAME-(116) vs. Kentucky State, Feb. 13, 1993  
GAME/BOTH TEAMS-(210) USI (104) vs. South Dakota State (106), November 11, 2001  
SEASON-(2844) 1996-97

### Most Field Goals Made

GAME-(48) vs. Kentucky State, Feb. 13, 1993  
SEASON-(1069) 1996-97

### Most Field Goals Attempted

GAME-(100) vs. Kentucky State, Feb. 13, 1993  
SEASON-(2262) 2001-02

### Most Free Throws Made

GAME-(38) vs. Alaska-Anchorage, Dec. 11, 1992; (38) vs. Indianapolis, Dec. 5, 1998  
SEASON-(548) 2001-02

### Most Free Throws Attempted

GAME-(50) vs. Alaska-Anchorage, Dec. 11, 1993; (50) vs. Indianapolis, Dec. 5, 1998  
SEASON-(779) 2001-02

### Most Three-point Field Goals Made

GAME-(14) VS. IUPUI Indianapolis, Dec. 4, 1992  
SEASON-(217) 1992-93

### Most Three-point Field Goals Attempted

GAME-(30) vs. Indianapolis, Jan. 30, 1993  
SEASON-(623) 1992-93

### Best Field Goal Percentage

GAME-(.609, 42-69) vs. St. Joseph's Jan. 11, 1997  
SEASON-(.487, 1069-2196) 1996-97

### Best Free Throw Percentage (Minimum of 10 attempts)

GAME-(1.000, 13-13) vs. Kentucky Wesleyan, Feb. 17, 1990  
SEASON-(.705, 488-692) 1995-96

### Best Three-Point Percentage (Minimum of 10 attempts)

GAME-(.667, 8-12) vs. Missouri-St. Louis, Feb. 13, 1999; (.667, 8-12) vs. Wisconsin-Parkside, Feb. 27, 2002  
SEASON-(.384, 175-456) 1994-95

### Most Rebounds

GAME-(67) vs. Kentucky State, Feb. 13, 1993  
SEASON-(1,418) 2000-01

### Most Steals

GAME-(29) vs. Tri-State, Dec. 29, 1998 & vs. St. Francis, Dec. 7, 1996  
SEASON-(468) vs. 1996-97

### Most Blocks

GAME-(16) vs. Bellarmine, Feb. 22, 1996  
SEASON-(157) 1995-96

### Miscellaneous

WIDEST MARGIN OF VICTORY:  
(95) vs. St. Mary's (113-18), 1978-79  
MOST VICTORIES IN A SEASON:  
(30) 1996-97  
MOST VICTORIES IN THE GLVC:  
(20) 1996-97 (Second year with a 20 game schedule)  
LONGEST WINNING STREAK: (29) 1996-97  
LONGEST WINNING STREAK  
IN A SEASON: (29) 1996-97  
BEST RECORD: (30-2, .938) 1996-97  
HIGHEST SCORING AVERAGE: (88.9)  
1996-97 (Best in the nation)

## INDIVIDUAL HONORS

### All-Americans

#### Kathy Lauck

- Kodak/WBCA 1994
- Division II Bulletin (First Team) 1994
- USA Today/Don Hansen's Weekly Basketball Gazette (Second Team) 1994
- GLVC Player of the Year, 1994
- All-GLVC 1993 (Second Team), 1994 (First Team)

#### LeAnn Freeland

- Kodak/WBCA 1995, 1996, 1997
- Division II Bulletin 1997
- College Sports All-American, 1995, 1996

LeAnn Freeland continued...

- College Sports National Player of the Year, 1995
- GLVC Player of the Year, 1995, 1997
- All-GLVC 1995 (First Team), 1996 (First Team), 1997 (First Team)
- GTE-CoSIDA Academic All-American 1996 (Third Team), 1997 (First Team)
- Academic All-GLVC, 1995, 1996, 1997

#### Eileen Weber

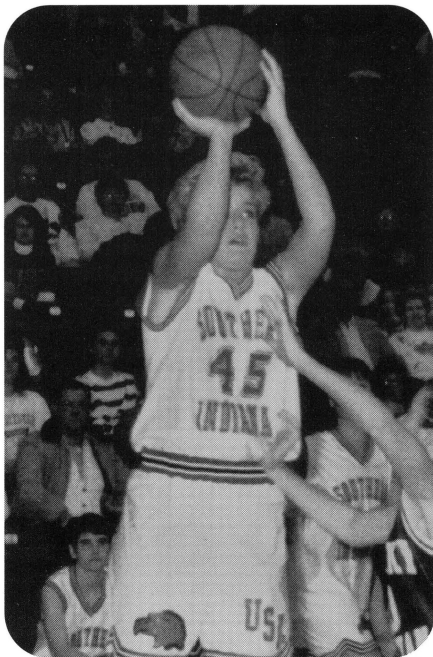
- Kodak/WBCA All-American; Daktronics All-American (Second Team), 1998
- Kodak/WBCA 1997 (Honorable Mention)
- Division II Bulletin 1997 (Honorable Mention); 1998 (Second Team)
- GLVC Player of the Year, 1998
- GLVC Newcomer of the Year, 1995
- All-GLVC 1995 (Second Team), 1996 (Second Team), 1997 (First Team); 1998 (First Team)
- Academic All-GLVC 1996, 1997, 1998

#### Elizabeth Prewett

- Daktronics All-American (Third Team), 2001
- All-Great Lakes Region (First Team), 2001
- NCAA II Great Lakes Region Tournament MVP, 2001
- All-GLVC (First Team), 2001
- GLVC All-Tournament Team, 2001
- Academic All-GLVC 1998, 1999, 2000, 2001

#### Jessica Stuckman

- Kodak/WBCA All-American (Honorable Mention), 2002
- Division II Bulletin Preseason All-American (Honorable Mention), 2001-02
- Division II Bulletin All-American (Honorable Mention), 2002
- Daktronics All-American (Honorable Mention), 2002
- Daktronics All-Region (First Team), 2002
- NCAA II Great Lakes Region All-Tournament, 2002
- GLVC Tournament MVP, 2001 and 2002
- All-GLVC (First Team), 2002; (Honorable Mention), 2001
- Verizon Academic All-District, 2002
- Academic All-GLVC, 2001, 2002



**INDIVIDUAL HONORS**

**Eagles Who Entered the Pro Ranks**

Jasmine Moore (Class of '02)  
– Macedonia (Europe), 2002

**All-IAIAW District**

Holly Billings–1981 Southern District  
All-Tournament Team  
Cindy Huckabee–1981 Southern District  
All-Tournament Team

**All-IAIAW State**

Holly Billings–1981 All-State Tournament Team  
Lisa Krieg–1982 All-State Tournament Team

**State Awards**

Holly Billings–1981 Eleanor St. John Award  
(presented to the top seven female athletes  
in Indiana)

**NCAA Division II Player of the Year**

LeAnn Freeland–1995  
(College Sports Magazine)

**Great Lakes Region**

**All-Tournament Selections**

Eileen Weber–1997  
LeAnn Freeland–1997 (MVP)  
Jasmine Moore–2001, 2002  
Elizabeth Prewett–2001 (MVP)  
Jessica Stuckman–2002

**Great Lakes Valley Conference**

**Players of the Year**

Kathy Lauck–1994  
LeAnn Freeland–1995, 1997  
Eileen Weber–1998

**Great Lakes Valley Conference**

**Newcomers/Freshman of the Year**

Eileen Weber–1995  
Jessica Stuckman–2001

**Great Lakes Valley Conference**

**All-Tournament Selections**

Jessica Stuckman–2001 (MVP), 2002 (MVP)  
Elizabeth Prewett–2001  
Jasmine Moore–2002

**Great Lakes Valley Conference**

**Players of the Week**

Connie VanMeter–1984  
Kim Pearson–1988  
Shelly Scott–1988-89 (twice)  
Kathy Lauck–1992, 1994 (twice)  
Glenna Bower–1992  
Missy Hart–1995  
LeAnn Freeland–1995 (three times), 1996  
(five times), 1997 (six times)  
Eileen Weber–1995, 1996, 1997  
Karrie Hochgesang–2000  
Nicole McDaniel–2000  
Jessica Stuckman–2001, 2002 (twice)  
Elizabeth Prewett–2001  
Casey Hughes–2001  
Natalie Glaser–2001  
Jasmine Moore–2002  
Africa Sherrod–2002 (twice)

**All-Great Lakes Valley Conference Team**

Peggy Witsman–1983-84 (Second Team)  
Penny Dietz–1985-86 (Second Team), 1986-87  
(Second Team)

Shelly Scott–1988-89 (Second Team), 1989-90  
(Honorable Mention)  
Kathy Lauck–1991-92 (Honorable Mention),  
1992-93 (Second Team), 1993-94 (First Team)  
Glenna Bower–1991-92 (Honorable Mention)  
Charlene Tinner–1992-93 (Honorable Mention)  
Lisa Wells–1992-93 (Honorable Mention),  
1993-94 (Honorable Mention)  
Laura Perek–1992-94 (Honorable Mention)  
LeAnn Freeland–1994-95 (First Team), 1995-96  
(First Team), 1996-97 (First Team)  
Eileen Weber–1994-95 (Second Team), 1995-96  
(Second Team), 1996-97 (First Team);  
1997-98 (First Team)  
Deb Pope–1994-95 (Honorable Mention),  
1995-96 (Second Team)  
Casey Hughes–1998-99 (Second Team),  
1999-00 (Honorable Mention),  
2001-02 (Honorable Mention)  
Adrienne Seitz–1998-99 (Honorable Mention)  
Stosha DeShaizer–1998-99 (Honorable Mention)  
Mindy Gingerich–1999-00 (Honorable Mention)  
Elizabeth Prewett–2000-01 (First Team)  
Natalie Glaser–2000-01 (Second Team)  
Jessica Stuckman–2000-01 (Honorable Mention),  
2001-02 (First Team)  
Jasmine Moore–2000-01 (Honorable Mention),  
2001-02 (First Team)  
Africa Sherrod–2001-02 (Honorable Mention)

**Great Lakes Valley Conference**

**Coach of the Year**

Chance Dugan, 1997  
Rick Stein, 2001

**WBCA District IV Coach of the Year**

Chance Dugan 1997  
(Finalist for National Coach of the Year)

**Great Lakes Valley Conference**

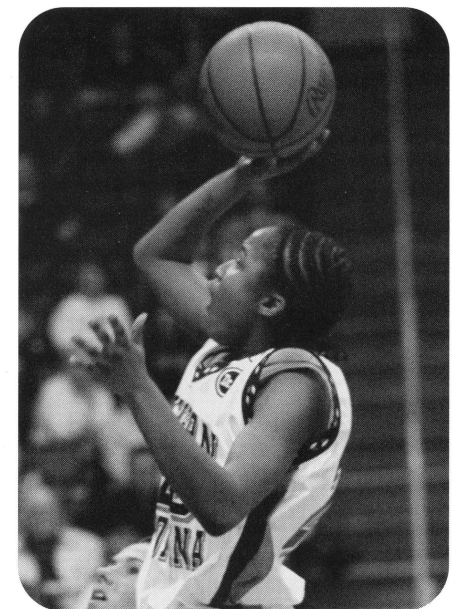
**All-Academic Team**

Jane Weaver–1988\*  
Shelly Scott–1989, 1992  
Shelly Kramer–1989  
Amy McCord–1990  
Laura Perek–1992, 1993, 1994  
Sharie Sweet–1992  
Sharon Gentry–1992  
Sheri Kaiser–1992, 1993  
Danielle Slaughter–1993, 1994  
Jeanette Elkin–1994

Daria Weitekamp–1996  
LeAnn Freeland–1995, 1996\*\*, 1997\*\*  
Eileen Weber–1996, 1997, 1998  
Adrienne Seitz–1996  
Mindy Gingerich–1997, 1998  
Darci Redenbaugh–1997, 1998  
Angie Cacello–1998  
Stosha DeShaizer–1998  
Liz Prewett–1998, 1999, 2000, 2001  
Cathy Tepool–1998, 1999  
Natalie Glaser–1999, 2000, 2001  
Karrie Hochgesang–1999, 2000, 2001  
Leah Mercer–1999  
Angi Lintker–1999  
Melinda Cunningham–2000  
Michelle Irwin–2000  
Bethany Miller–2000, 2001  
Mandy Shaff–2000  
Jessica Stuckman–2001, 2002  
April Williams–2002

\*Weaver graduated in 1989  
summa cum laude with a perfect 4.0 GPA

\*\*Freeland was named GTE/CoSIDA  
Academic All-American



# Women's Basketball RECORD BOOK



## TEAM HONORS

**1979-80** IIAAW Southern District Champions  
Final Four in IIAAW Southern District

**1980-81** Runner-up in the IIAAW Southern District  
Final Four in IIAAW State Tournament

**1994-95** Nationally Ranked third  
GLVC Co-Champions  
NCAA II Tournament Berth (Tied for fifth)

**1995-96** Preseason Ranked third (Division II Bulletin)  
NCAA II Tournament Great Lakes Regional (Tied for third)

**1996-97** Preseason Ranked 6th (Division II Bulletin)  
GLVC Champion (20-0)  
NCAA II Great Lakes Regional Champions (Marquette, MI)  
NCAA II National Finalist (Grand Forks, ND)

**1997-98** Ranked NUMBER ONE nationally for six weeks.  
GLVC regular season and tournament champions.  
NCAA II Great Lakes Regional Semi-Finalist (HOSTED BY USI)

**1998-99** Participated in the NCAA II Tip-Off Classic at Disney's Wide World of Sports (Orlando, FL)  
Third in GLVC Tournament

**1999-00** GLVC Tournament

**2000-01** NWMSU Disney Classic participant (Orlando, FL)  
GLVC Co-Champions (17-3)  
GLVC Tournament Champions  
NCAA II Great Lakes Regional Champions (Houghton, MI)  
NCAA II Elite Eight Participant (Rochester, MN)  
Ranked 6th in final WBCA Top 25 Poll

**2001-02** Second at the Disney D-II Tip-off Classic (Orlando, FL)  
GLVC Tournament Champions  
NCAA II Great Lakes Regional finalists (hosted by USI)  
Ranked as high as fourth in nation  
Ranked 10th in final WBCA Top 25 Poll

## ALL-TIME COACHING RECORD

1975-76 ..... 3-8 ..... Ruth Waller  
1976-77 ..... 7-11 ..... Ruth Waller  
1977-78 ..... 8-8 ..... Ruth Waller  
1978-79 ..... 14-6 ..... Ruth Waller  
1979-80 ..... 16-9 ..... Ruth Waller  
1980-81 ..... 14-11 ..... Ruth Waller  
1981-82 ..... 7-17 ..... Ruth Waller  
1982-83 ..... 4-24 ..... Ruth Waller  
1983-84 ..... 15-13 ..... Ruth Waller  
1984-85 ..... 14-14 ..... Ruth Waller  
(102-94, 520)

1985-86 ..... 15-13 ..... Larry Shown  
1986-87 ..... 12-15 ..... Larry Shown  
(27-28, 491)

1987-88 ..... 8-20 ..... Bob Barrett  
(8-20, 400)

1988-89 ..... 6-21 ..... Felicia Cavallini  
1989-90 ..... 2-26 ..... Felicia Cavallini  
1990-91 ..... 3-25 ..... Felicia Cavallini  
(11-72, 133)

1991-92 ..... 8-20 ..... Chancellor Dugan  
1992-93 ..... 15-15 ..... Chancellor Dugan  
1993-94 ..... 17-10 ..... Chancellor Dugan  
1994-95\*! ..... 22-5 ..... Chancellor Dugan  
1995-96! ..... 22-7 ..... Chancellor Dugan  
1996-97\*! ..... 30-2 ..... Chancellor Dugan  
1997-98\*! ..... 26-2 ..... Chancellor Dugan  
1998-99 ..... 19-12 ..... Chancellor Dugan  
(159-73, 685)

1999-00 ..... 15-12 ..... Rick Stein  
2000-01\*! ..... 28-4 ..... Rick Stein  
2001-02\*! ..... 27-6 ..... Rick Stein  
(70-23, 753)

27 YEARS+ ..... 377-336 (.529)

\*GLVC Championship  
!NCAA II Tournament Berth

## 1975-2002 ALL-TIME WOMEN'S BASKETBALL SERIES RECORDS

Abilene Christian ..... 0-1  
Anderson College ..... 2-0  
Ashland University ..... 7-15  
Angelo State ..... 1-0  
Austin Peay ..... 0-6  
Bellarmino ..... 15-29  
Brescia ..... 0-3  
Butler University ..... 1-6

Cal State Dominguez Hills ..... 1-0  
Campbellsville ..... 0-1  
California-Davis ..... 1-0  
Charleston ..... 1-0  
Central Arkansas ..... 1-0  
Central Missouri ..... 1-0  
Central State ..... 0-2  
Columbia College ..... 0-1  
Columbus State ..... 0-2  
Chicago Circle ..... 1-0  
David Lipscomb ..... 0-2  
Delta State ..... 2-0  
DePauw University ..... 2-0  
Eastern Illinois ..... 0-2  
East Texas State ..... 0-1  
Evansville ..... 7-15  
Ferris State ..... 4-0  
Florida Tech ..... 1-0  
Fort Campbell ..... 1-2  
Franklin College-A ..... 9-2  
Gannon ..... 2-0  
Georgetown ..... 1-0  
Grace ..... 1-0  
Grand Valley State ..... 1-0  
Hanover ..... 1-0  
Hillsdale ..... 1-0  
Illinois-Springfield ..... 1-0  
Indianapolis ..... 22-23  
Indiana Pa. .... 1-0  
Indiana Tech ..... 2-0  
IUPU-Ft. Wayne ..... 16-17  
IUPU-Indianapolis ..... 11-5  
IU-Southeast ..... 14-9  
Indiana State ..... 0-1  
John A. Logan ..... 4-0  
John Hopkins ..... 1-0  
Kentucky State ..... 12-3  
Kentucky Wesleyan ..... 33-21  
Lake Superior State ..... 1-0  
Lewis ..... 23-16  
Lincoln Trail ..... 6-2  
Lincoln University ..... 1-0  
Lynn ..... 0-1  
Marian ..... 0-3  
Michigan Tech ..... 4-2  
Middle Tennessee St. .... 0-2  
Minnesota-Duluth ..... 1-0  
Missouri-Kansas City ..... 1-2  
Missouri-Rolla ..... 0-2  
Missouri-St. Louis ..... 13-8  
Missouri Southern State ..... 0-1

Murray State ..... 1-4  
Nebraska-Kearney ..... 0-1  
Nebraska-Omaha ..... 1-0  
Northern Colorado ..... 1-0  
North Dakota ..... 0-1  
Northern Kentucky ..... 15-26  
Northern Michigan ..... 4-1  
NW Missouri State ..... 1-0  
Oakland University ..... 1-1  
Oakland City ..... 22-11  
Pikeville ..... 0-1  
Puerto Rico-Mayaguez ..... 1-0  
Purdue-Calumet ..... 1-0  
Quincy ..... 14-5  
Rockhurst ..... 1-0  
Scranton ..... 1-0  
School of the Ozarks ..... 0-1  
South Dakota State ..... 0-1  
Southeast Missouri ..... 1-11  
SIU-Carbondale ..... 4-2  
SIU-Edwardsville ..... 19-17  
St. Ambrose ..... 1-0  
St. Francis ..... 1-0  
St. Joseph's ..... 22-20  
St. Louis ..... 2-4  
St. Mary's (Tex.) ..... 1-0  
St. Mary's of the Woods ..... 4-0  
St. Rose ..... 0-1  
Tampa ..... 1-0  
Truman State ..... 1-1  
Tri-State ..... 1-0  
Valparaiso ..... 3-0  
Vincennes ..... 0-8  
Wayne State ..... 1-0  
Wisconsin-Parkside ..... 14-0  
Wright State ..... 2-2

## USI Screaming Eagles Quick Facts

**Location:** Evansville, Ind. (population 171,922)  
**Enrollment:** 9,675 (Fall 2002)  
**Conference:** Great Lakes Valley Conference  
**Affiliation:** NCAA II  
**Nickname:** Screaming Eagles  
**Colors:** Red, White, and Blue  
**Home Court:** Physical Activities Center (cap. 3,300)  
**Web site:** www.usi.edu

## USI Board of Trustees

J. David Huber, Cannelton ..... Chair  
 Bruce H. Baker, Boonville ..... Vice Chair  
 G. Patrick Hoehn, Floyd's Knobs ..... Vice Chair  
 Louise S. Bruce, Tell City ..... Secretary  
 Walter J. Jermakowicz III, Evansville  
 Tina M. Kern-Raibley, Evansville  
 Thomas F. McKenna, Carmel  
 Harolyn G. Torain, Indianapolis  
 James L. Will, Sr., Evansville

## USI Officers

Dr. H. Ray Hoops, President  
 Cynthia S. Brinker, Vice President  
     for Governmental Relations  
 Robert W. Parrent, Vice President for Student Affairs  
 Dr. Robert L. Reid, Vice President for Academic Affairs  
 Robert W. Ruble, Vice President for Business Affairs  
     and Treasurer  
 Sherrienne M. Standley, Vice President for Advancement

## USI Athletics

**Jon Mark Hall**  
 Athletic Director .....812/465-7164  
**Jay Newton**  
 Asst. Athletic Director  
 and NCAA Compliance Coordinator ....812/465-7164  
**Dr. Scott Gordon**  
 Faculty Athletic Representative .....812/465-7137

**Mike Goedde**  
 Baseball Coach .....812/464-1943  
**Rick Herdes**  
 Men's Basketball Coach .....812/465-1639  
**Marc Hostetter**  
 Asst. Men's Basketball Coach .....812/461-5279  
**Jesse Watkins**  
 Asst. Men's Basketball Coach .....812/465-1083  
**Rick Stein**  
 Women's Basketball Coach .....812/465-7108  
**LeAnn Freeland**  
 Asst. Women's Basketball Coach  
 and Senior Women's Administrator .....812/465-1050  
**Randa Gatling**  
 Asst. Women's Basketball Coach .....812/464-1895  
**Mike Hillyard**  
 Cross Country Coach .....812/464-1846  
**Jim Brown**  
 Men's Golf Coach .....812/464-1898  
**Don Bisesi**  
 Women's Golf Coach .....812/435-6075  
**Dan Hogan**  
 Men's Soccer Coach  
 and Athletic Academic Advisor .....812/464-1946

**Bill Wilkins**  
 Women's Soccer Coach .....812/465-1041  
**Sue Kunkle**  
 Women's Softball Coach .....812/465-1664  
**Ross Brown**  
 Men's Tennis Coach .....812/464-1814  
**Keely Porter**  
 Women's Tennis Coach .....812/464-5235  
**Craig Bere**  
 Women's Volleyball Coach .....812/465-1789  
**Chris Johnston**  
 Head Athletic Trainer .....812/465-1298  
**Ray Simmons**  
 Sports Information Director .....812/465-1622  
     812/402-6435 - (H)  
     812/465-7094 - (Fax)  
**Dan McDonnell**  
 Asst. Sports Information Director .....812/465-1622  
     812/303-4268 - (H)

Ticket Information  
 812/465-7165



University of Southern Indiana  
 click on  
**www.usi.edu/SPORTS/**  
**for the latest news and information**  
**regarding Eagle Athletics**



**PLATINUM SPONSORS**

Baymont Inn & Suites  
Fairfield Inn West  
G.E. Plastics  
Integra Bank

Master Tire & Accessories  
Pepsi Cola General Bottlers  
Sprint PCS  
West Side Nut Club

**VARSITY CLUB  
SCREAMING EAGLES**

Bruce and Carol Baker  
Bonnie Brill  
Steve and Terri Chancellor  
David Deig  
Jef and Neal Franklin  
Vic and Pam Gallagher  
Loren Herrli  
Alan and Marilyn Johnson  
Mike and Debbie Laster  
Jay and Kate Rhodes  
Earl and Ruth Smith  
Harvey and Lisa Tanner  
Paul and Eleanor Werner  
John and Linda Willis  
Mark and Annette Wright  
Ray and Marilyn Wright

**VARSITY CLUB  
ALL-AMERICAN EAGLES**

Terry and Susan Babb  
Ed and Holley Brundick  
Jack and Bertha Burgdorf  
Bob and Pam Clayton  
Jerry and Mike Crawford  
Terry and Rosie Cullum  
Wayne and Patti Deig  
Ed and Gayle Derringe  
Genie Eades  
Bettie Engelbrecht  
Deavron Farmer  
DG Fehrenbacher  
Jim and Judy Fleck  
Patrick Goen  
Ron and Theresa Herrenbruck  
David and Sarah Huber  
Industrial Contractors  
Aimee Luebben and Keith Smith  
Jim and Jackie Pender  
Steven and Kim Pike  
Jack and Kate Siemers  
Marvin and Joan Smith  
Larry and Kathy Vonderahe  
West Side Nut Club  
Jim and Karon Will  
Jim and Elieen Will  
Jeff and Laurie Wilmes

**GOLD SPONSORS**

Casino Aztar  
Denny's Restaurant  
Old National Bank  
of Evansville  
Ohio Valley Heart Care, Inc.

**SILVER SPONSORS**

ABC 25 WEHT TV  
Advantage Courts and Fitness  
Deaconess Hospital  
Evansville Courier & Press  
Expressway Dodge  
Fifth Third Bank  
Gerteisen Electric  
Hilliard Lyons of Evansville  
Kenny Kent Toyota  
Lexus Mitsubishi  
Lindsey Lincoln Mercury Isuzu  
Outback Steakhouse  
Shyler's Bar-B-Q  
United Leasing  
Working Distributors

**BRONZE SPONSORS**

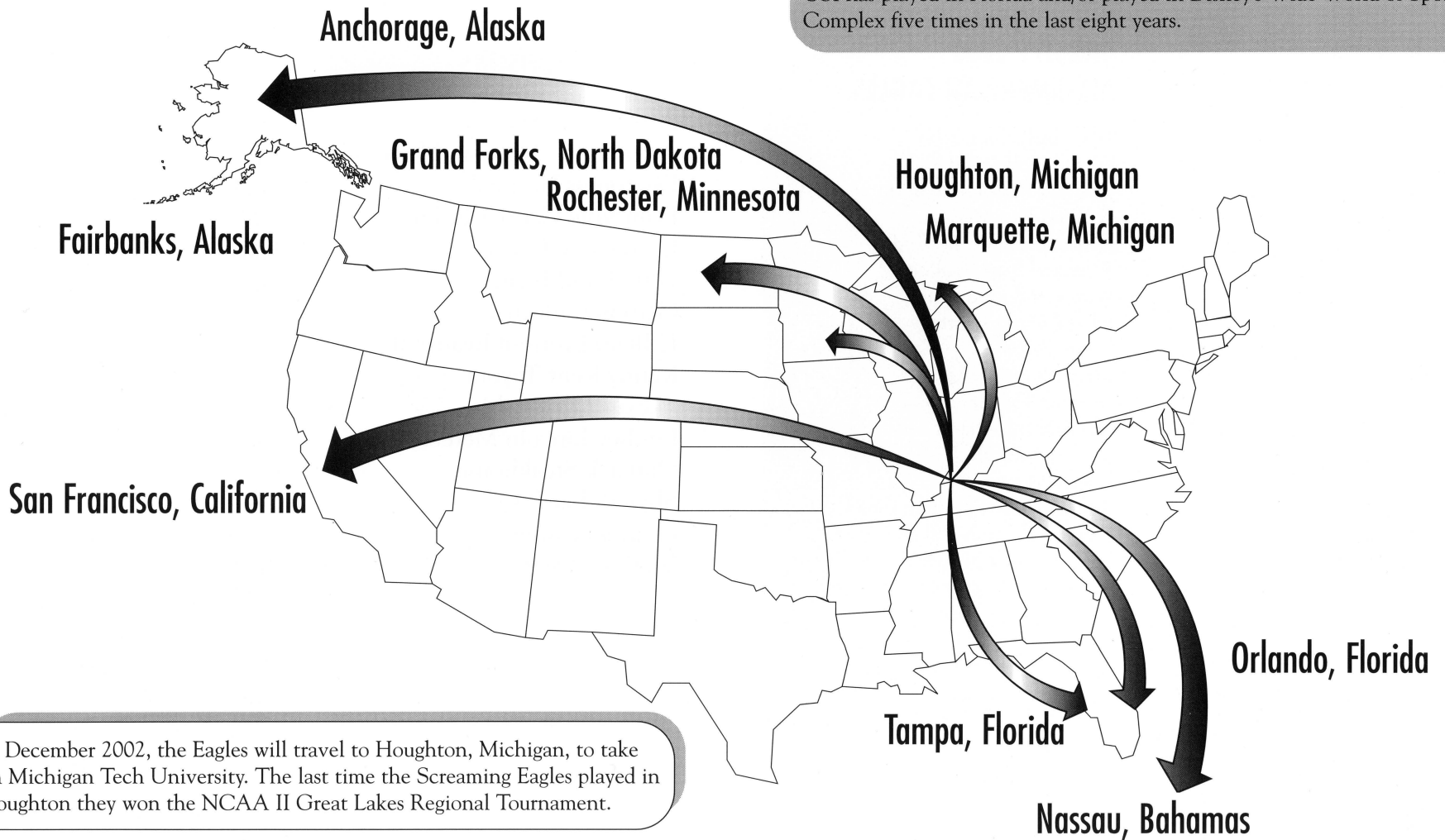
American General Finance  
Bob Evans Restaurant  
Buffalo Wild Wings  
D Patrick Downtown Ford  
Doctor Associates  
Elbrink Electric  
Empire Contractors  
Evansville Teachers Federal  
Credit Union  
Eye Mart  
Fischer Candy Company  
Golden Corral  
Hagedorn's Tavern  
Jacob's Pub & Restaurant  
Lewis Bakeries  
Moore & Associates  
Mattress Factory Showroom  
Mead Johnson Nutritionals  
Mulzer Crushed Stone  
O'Charley's Restaurant  
& Lounge  
Stratman Pharmacy  
Tri-Valley Water/  
Hinckley Springs  
Turoni's Pizzeria & Brewery  
Wendy's Old Fashioned  
Hamburgers  
Wesselman's Grocery Stores  
Western Rib-Eye & Ribs  
Restaurant  
Zeidler Floral Company

# Screaming Eagles **ACROSS THE NATION**

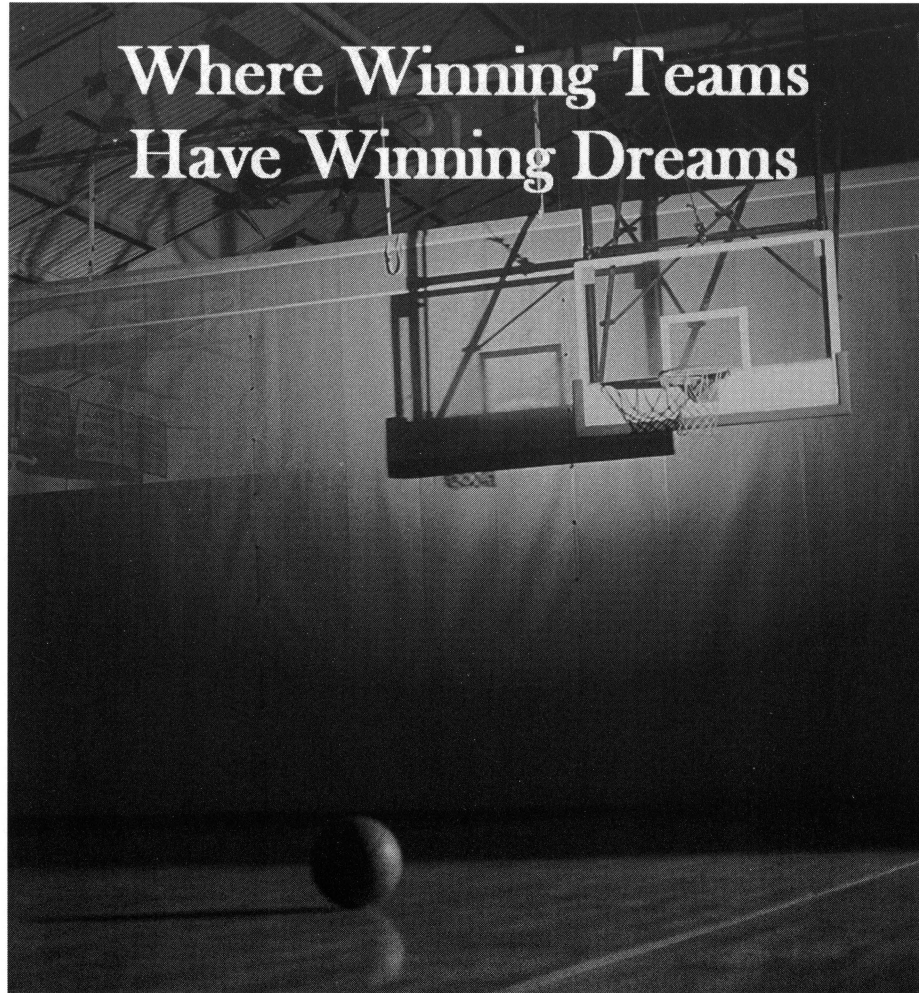
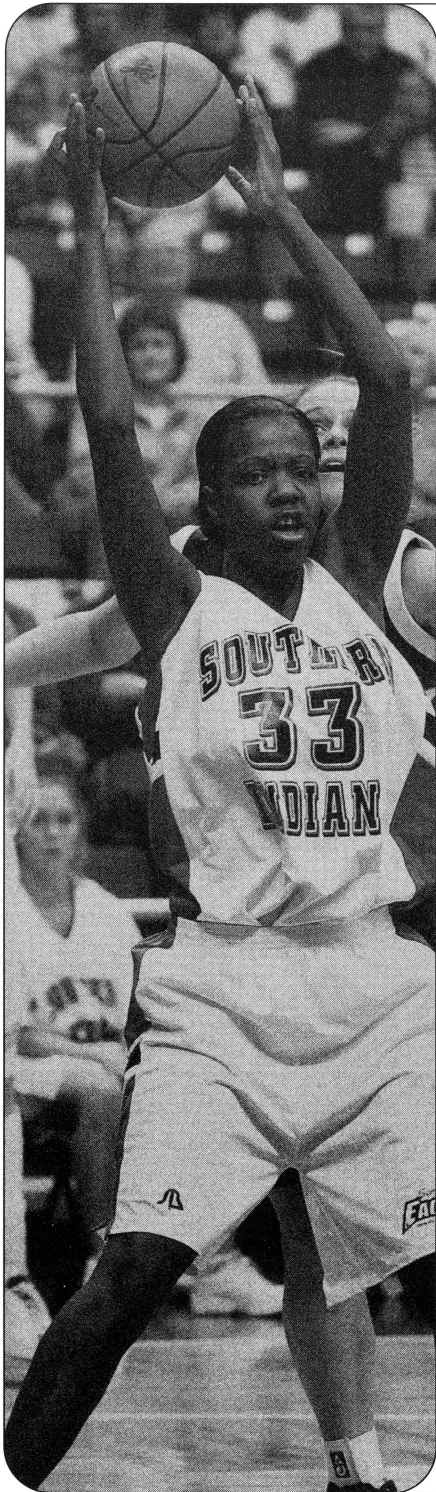
## Screaming Eagles fly around the USA

The University of Southern Indiana women's basketball teams have traveled the continental United States and beyond over the last 11 years. USI has played in regular season tournaments in Alaska, California, Florida, Missouri, and the Bahamas, and in NCAA Division II Tournaments in North Dakota, Michigan, and Minnesota.

USI has played in Florida and/or played in Disney's Wide World of Sports Complex five times in the last eight years.



In December 2002, the Eagles will travel to Houghton, Michigan, to take on Michigan Tech University. The last time the Screaming Eagles played in Houghton they won the NCAA II Great Lakes Regional Tournament.



**WEST**

5400 Weston Rd.  
Lloyd Expressway  
@ Red Bank Rd.  
429-0900

*Proudly supports*



*and all teams in the  
Great Lakes Valley Conference*

A Member of Dunn Hospitality Group - For other locations, visit our website at: [www.dunnhospitality.com](http://www.dunnhospitality.com)

www.integrabank.com



## Team play is our game plan.

From one Evansville institution  
to another – Go Team!

Thank you for making us your bank in Evansville.

For over 150 years, we've delivered personal and  
business financial solutions to the tri-state area.

Today, we're proud to be part of many great teams.

**Stop by your neighborhood Integra Bank  
today or call us at 800-467-1928.**

 **Integra Bank.**



BE A PART OF THE EXCITEMENT!



Presented by Kenny Kent Toyota & Old National Bank

PEPSI



March 5-8, 2003

Roberts Stadium  
Evansville, Indiana

SESSIONS

Wed., March 5	Session 1	Game 1	Women's Quarterfinals	12:00 pm
		Game 2	Women's Quarterfinals	2:30 pm
	Session 2	Game 3	Women's Quarterfinals	6:00 pm
		Game 4	Women's Quarterfinals	8:30 pm
Thurs., March 6	Session 3	Game 5	Men's Quarterfinals	12:00 pm
		Game 6	Men's Quarterfinals	2:30 pm
	Session 4	Game 7	Men's Quarterfinals	6:00 pm
		Game 8	Men's Quarterfinals	8:30 pm
	Session 5	Game 9	Women's Semifinals	12:00 pm
		Game 10	Women's Semifinals	2:30 pm
Fri., March 7	Session 6	Game 11	Men's Semifinals	6:00 pm
		Game 12	Men's Semifinals	8:30 pm
	Session 7	Game 13	Women's Finals	4:00 pm
		Game 14	Men's Finals	7:00 pm



For more details call 812-476-1383

or visit our web site at

[www.glvcsports.org](http://www.glvcsports.org)

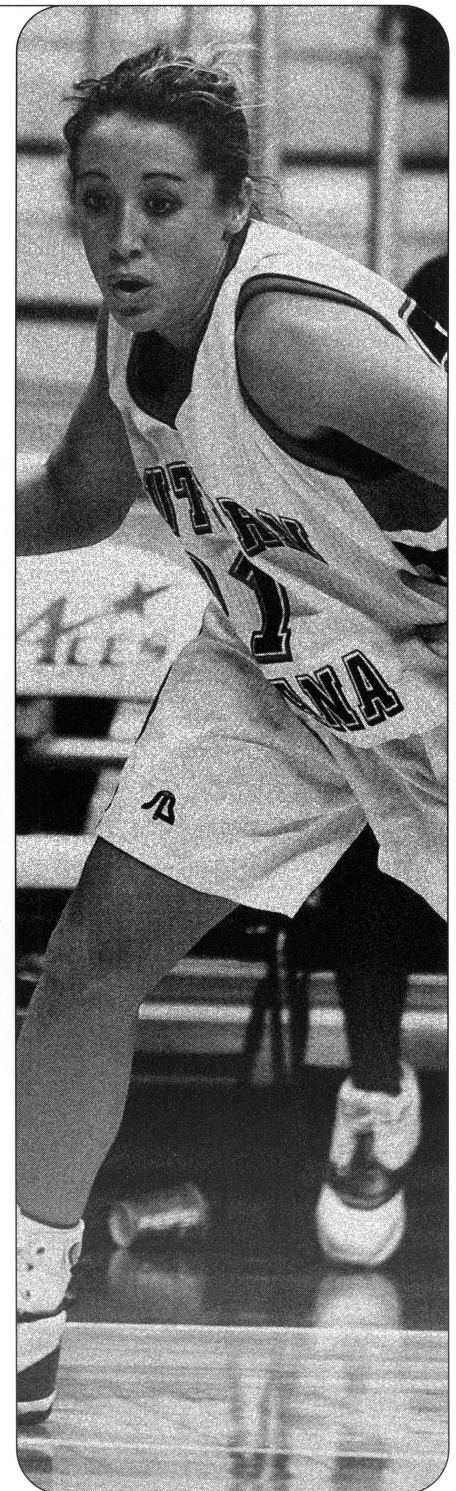


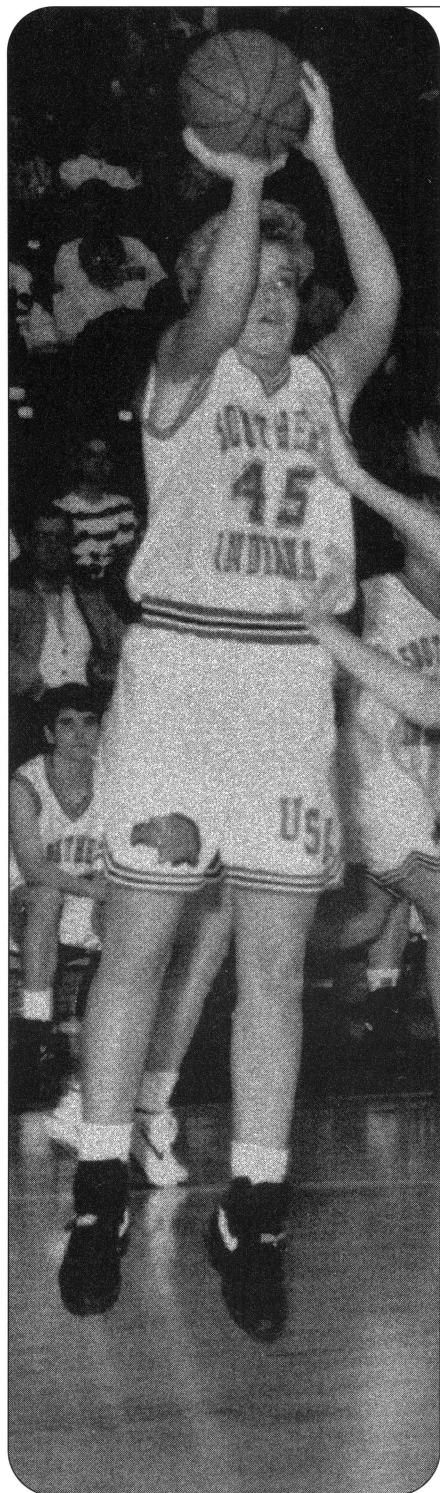
TOYOTA

LEXUS

Used Car Superstore

5600 Division Street - Evansville, Indiana 47715  
(812) 473-5600 - 1-800-321-KENT - [www.kennykent.com](http://www.kennykent.com)





# BAYMONT<sup>®</sup>

## INN & SUITES

### Baymont Inn & Suites West

5737 Pearl Drive, Evansville, IN 47712

812-421-9773

Special  
USI  
Rate:  
\$52.00

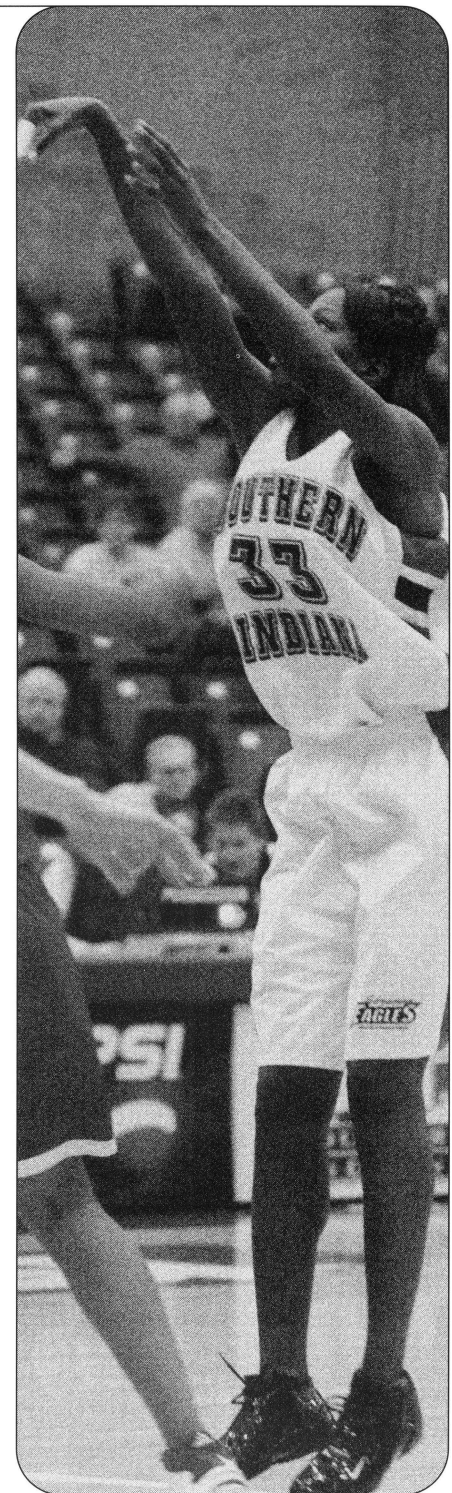
plus tax

Restriction apply,  
subject to availability,

- Indoor Heated Pool & Whirlpool
- 24 Hour Fitness Center
- Deluxe Continental Breakfast
- Hairdryers, Coffee Makers, Iron & Ironing Board in all guestrooms
- Electronic locks & Interior corridor
- And much more!

Take a virtual tour at  
[www.baymontinnevansville.com](http://www.baymontinnevansville.com)

*We're Worth Checking Into!*





**AIR CONDITIONING  
BRAKES  
TIRES & TUBES  
WHEEL ALIGNMENT**



**ZELLER'S  
MASTER TIRE**

4951 W. Lloyd Exwy • Evansville, IN

**MASTER TIRE &  
ACCESSORIES**

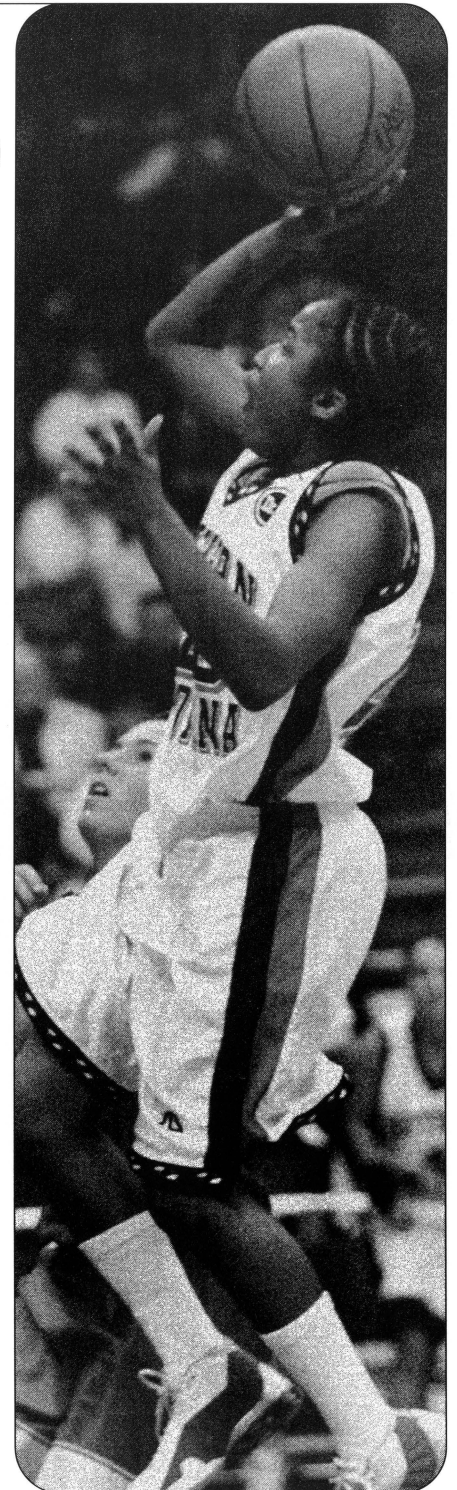
905 W. Columbia Street • Evansville, IN

*Bryan Zeller  
David Zeller  
Jim Zeller  
Chuck Zeller*

**“GO EAGLES”**



**AMERICAN OWNED • AMERICAN MADE**





**CASINO AZTAR THE REWARDS ARE ENDLESS AT CASINO AZTAR!**

**OVER 1,400 HOT SLOTS!**

WHAT COULD BE MORE REWARDING THAN ENJOYING A FULL-SERVICE CASINO RIGHT HERE IN THE MIDWEST?

*Casino Aztar continues to deliver you more!*

- ★ A place for every taste with five outstanding restaurants!
- ★ Action-packed gaming with popular new slots arriving all the time!
- ★ A luxurious 250 room hotel!
- ★ Plus, Casino Aztar offers live entertainment seven nights a week!

The rewards are endless at Casino Aztar and they're all waiting for you!

**CORNY'S RIBS & BBQ**

**CASINO AZTAR**  
An Aztar Corporation Casino

**1-800-DIAL FUN**  
421 NW Riverside Drive  
Evansville, IN 47708  
[www.casinoaztar.com](http://www.casinoaztar.com)

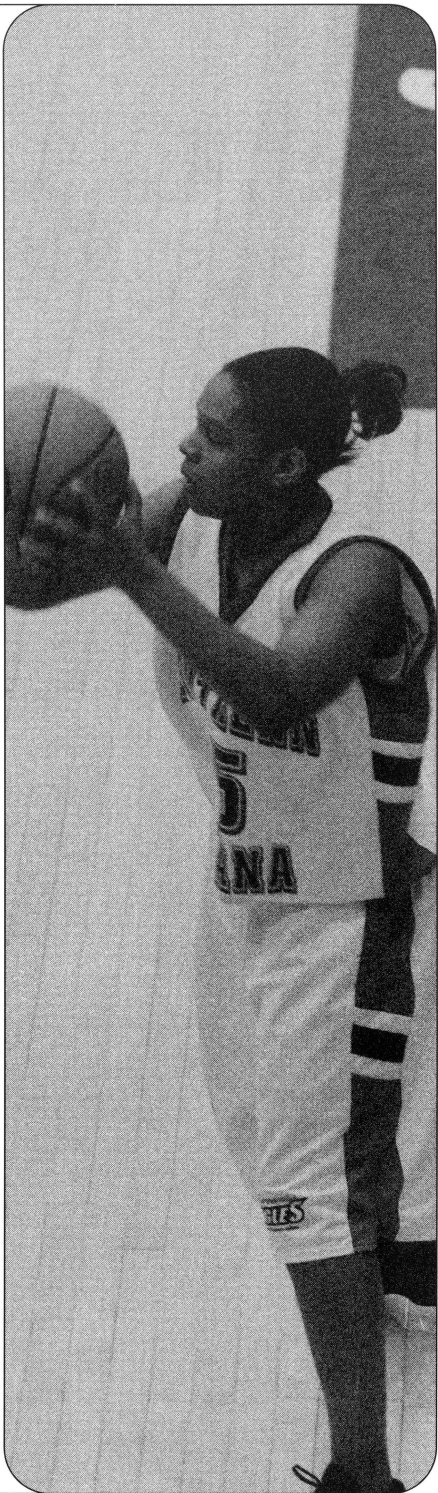
**Every Day's A PARTY!**

**Denny's**  
**OPEN 24 HOURS**

**4 Evansville Locations**

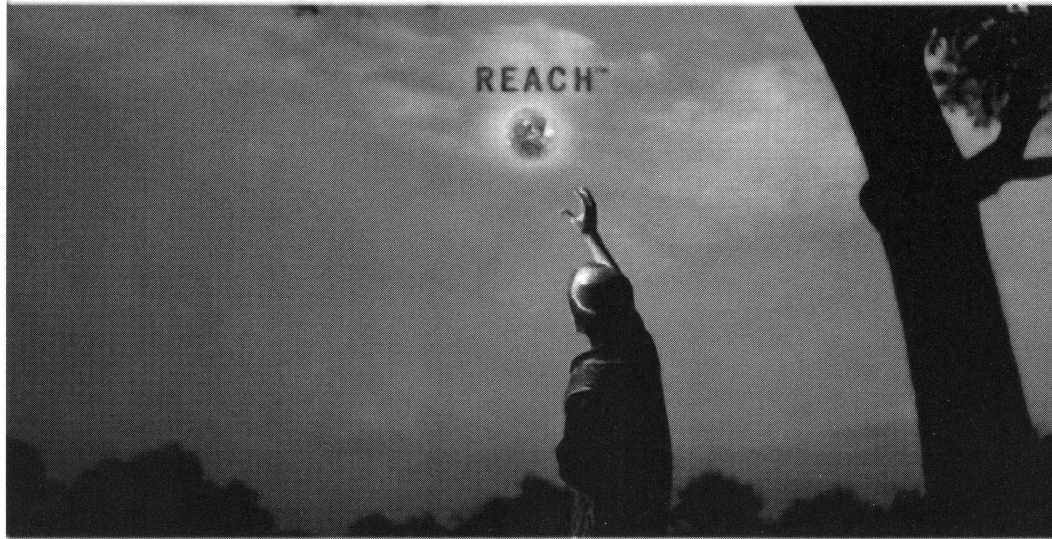
- 4301 Hwy 41 North
- 351 North Green River Road
- Lloyd Expressway & Redbank Road
- Hwy 41 & 164

**Home Of The Original Grand Slām® Breakfast**





**You know that life? The one you see in your head?  
The one you imagine when you look at your kids?  
With a little help, that life can be yours. So go ahead.**

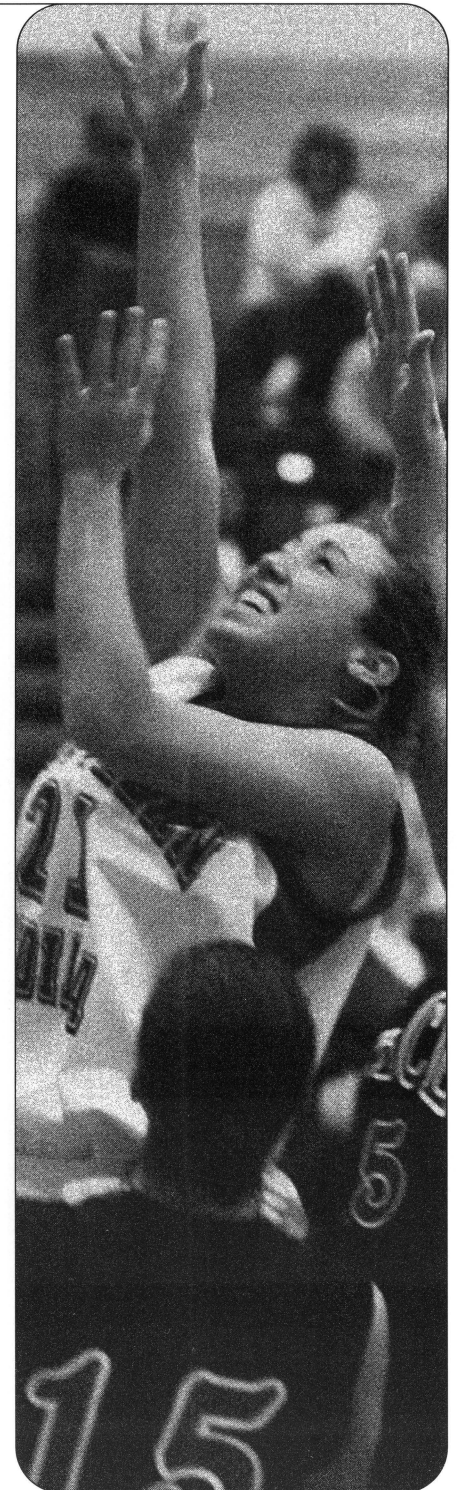
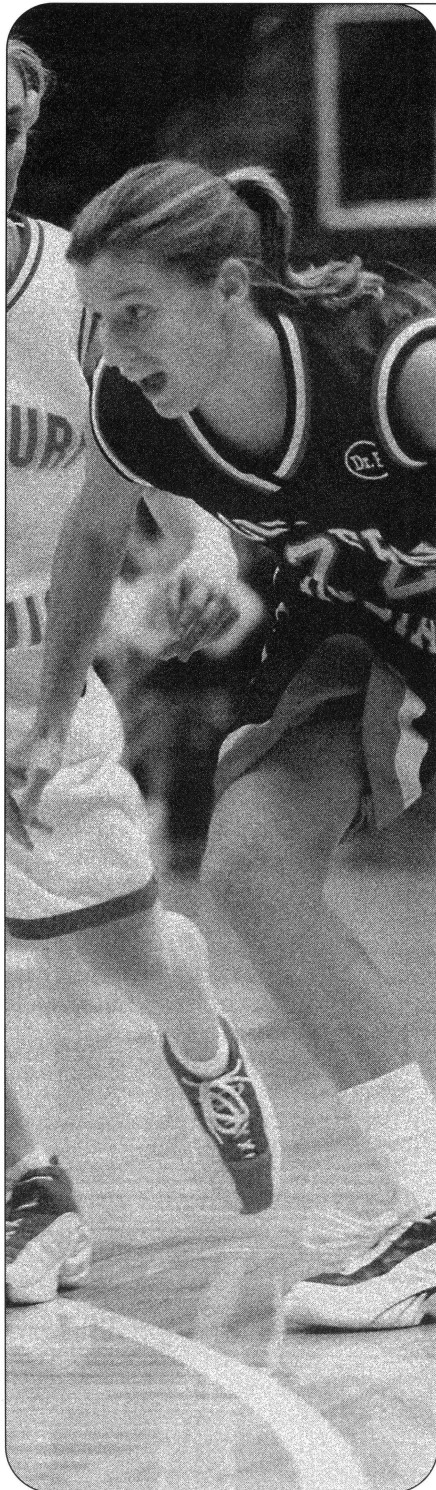


 **OLD NATIONAL**

[www.oldnational.com](http://www.oldnational.com)

Banking. Investments. Insurance.

1-800-731-BANK





## Wireless at the top of its game.

Experience wireless  
you can see and hear.

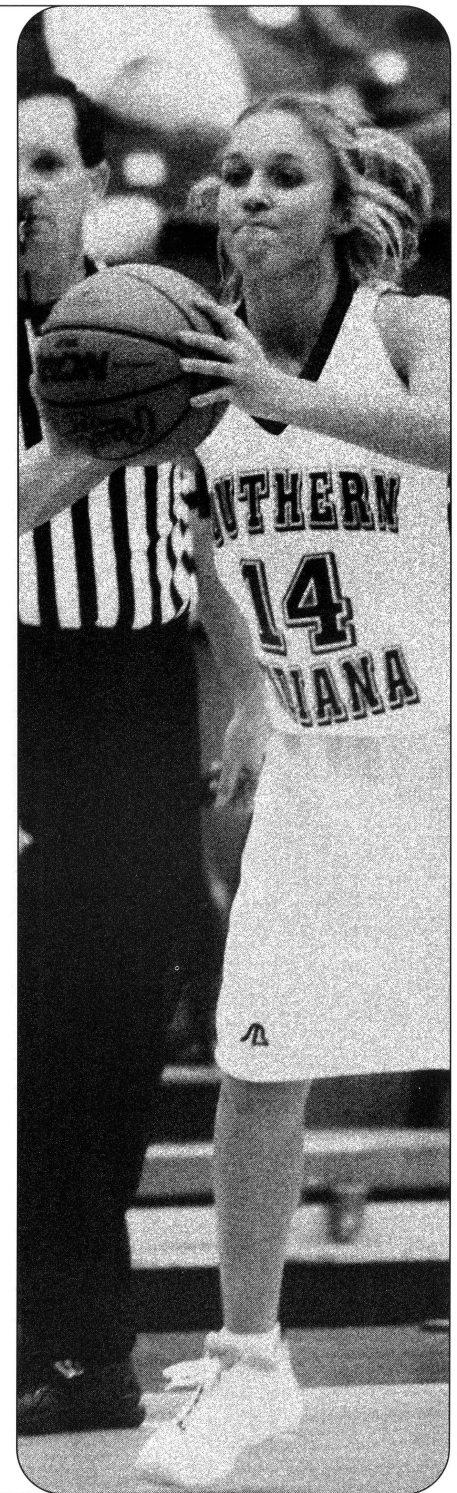
Take a picture, play a game,  
check e-mail and hear your  
favorite music every time it  
rings. PCS Vision<sup>SM</sup> is more  
than a phone call – it's  
clearly a whole new way  
to look at wireless.



PCS Phone by  
Samsung<sup>®</sup>  
(model A500)


**Evansville**  
5225 Pearl Drive  
(812) 467-0335  
M-F: 10-8 Sat: 10-5 Sun: 1-5

**Evansville**  
303 N. Green River Road  
(812) 471-2786  
M-F: 9-7 Sat: 10-5 Sun: 1-5

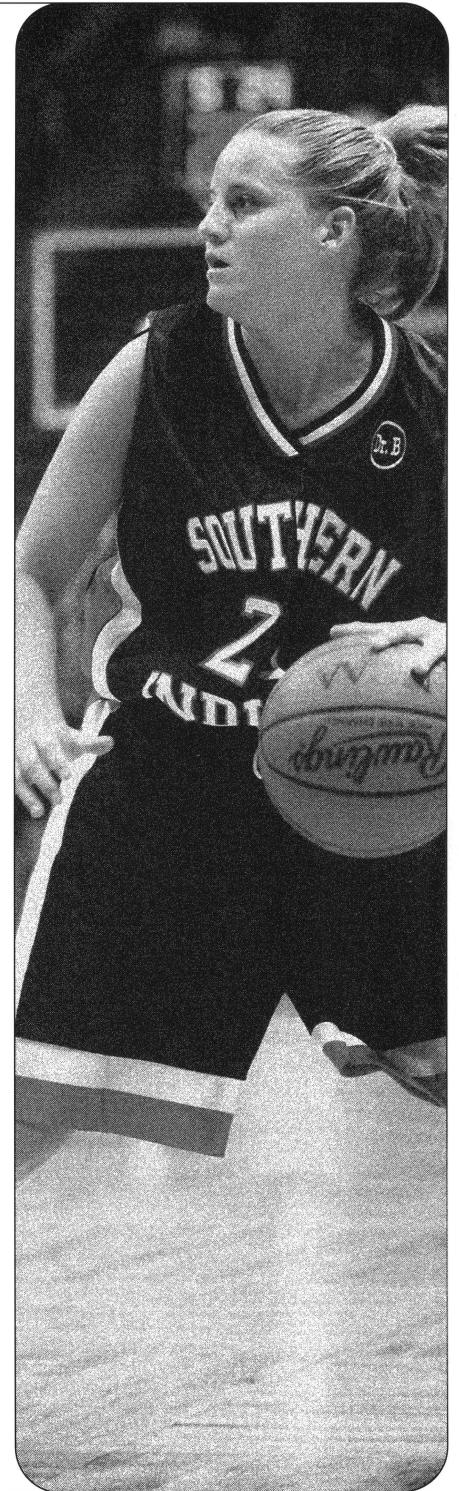




The  
**Joy of**



**PEPSI**



# UNIVERSITY OF SOUTHERN INDIANA SCREAMING EAGLES

1997 NCAA II FINALISTS • TWO NCAA II ELITE EIGHT APPEARANCES



SIX NCAA TOURNAMENT APPEARANCES • FIVE GLVC CHAMPIONSHIPS

## 2003 SENIOR CLASS

