



university notes

INDIANA STATE UNIVERSITY EVANSVILLE, EQUAL OPPORTUNITY EMPLOYER
SHERRIANNE STANDLEY, EDITOR DANA HOLDER, ASSOCIATE EDITOR

Volume XVI, Number 22
January 27, 1982

HUMANITIES FORUM SCHEDULED FOR TODAY. Rev. and Mrs. Philip Hoy, formerly of Ft. Wayne, will present a lecture today at 10:00 a.m. in UC352. Their presentation is entitled "All in a Day's Work".

Rev. Hoy graduated from the Southern Baptist Theological Seminary of Louisville with the Master of Divinity degree. From 1962 to 1972 he was pastor of Union United Church of Christ in Evansville. During that time, he worked as a private counselor and taught part-time in the Humanities Department of Brescia College. He served as executive director of the Metropolitan Evansville Youth Service Bureau, a multi-county agency providing many services to young people, from 1973 to 1975. The Indianapolis native was the pastor of the Faith United Church of Christ from 1975 to 1980. In October of 1981, he was installed as pastor of the St. Matthew's United Church of Christ in Evansville.

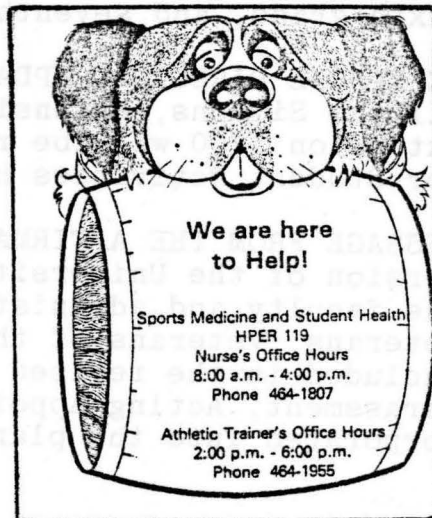
Bobbie Hoy, a lay United Church of Christ minister, served as chaplain of the Crossroad Children's Home in Ft. Wayne before the couple moved to Evansville. The two spent a year in Americus, Georgia, where Mrs. Hoy was administrative director of Habitat for Humanity, a Christian organization which finances and builds housing for needy people throughout the world. The organization is informally connected with Koinonia, an inter-racial Christian community near Americus.

The Hoys will discuss the time they spent in Americus working with Habitat during their Humanities Forum lecture. Everyone is invited to attend the lecture.

UNITED WAY. The ISUE United Way committee wishes to thank all who participated in this year's fund drive. According to campaign chairperson Chris Zlatos, contributions this year were 11% higher than in the previous year, and totaled \$4,128.73. Appreciation is extended to all who supported this worthwhile community endeavor.

SPORTS MEDICINE AND STUDENT HEALTH OPEN HOUSE.

The University community is invited to attend the SMASH Open House on Thursday, January 28, from 2:00 - 4:00 p.m., in HPER119. This will give everyone an opportunity to meet SMASH, the St. Bernard puppy, who watches over the new Health Services office. For more information about the Open House, contact Donna Myers at extension 1807 or Cindy Thomas at 1955.



EVANSVILLE MUSEUM OF ARTS AND SCIENCES MEMBERSHIP DRIVE. The annual membership drive of the Evansville Museum of Arts and Sciences is being held this month at ISUE and in the community. Members are being sent a membership renewal notice. If you have been a faithful member in the past, please send in your renewal check.

This year, more than ever, the Museum needs your help to pay for the daily operating expenses of one of Evansville's greatest assets. Start the year out right and do something for your community. The Museum and ISUE cooperate in several projects each year, including art exhibits, special guest lectures, and grant projects. In the coming year, an exhibit on DNA, prepared by Dr. Marlene Shaw, associate professor of life science, will be unveiled at the Museum.

New or renewal memberships can be sent directly to the Museum or to ISUE's fund drive representative, Mary Lue Russler. This is the third year the fund drive has been held on campus, and all faculty, administrators, staff, and students are invited to participate. For more information, call extension 1918.

IRA SEMINARS. Four seminars have been scheduled for the month of February to discuss the widely publicized IRA accounts. Employees interested in attending any or all of the sessions should contact the Personnel Office at extension 1770. The schedule for the IRA campus seminars is listed below.

February 3	Old National Bank	UC352	2:00 - 3:00 p.m.
February 9	Hilliard-Lyons	UC350	1:00 - 2:00 p.m.
February 18	Citizens National Bank	UC350	2:00 - 3:00 p.m.
February 24	National City Bank	UC350	1:00 - 2:00 p.m.

Biweekly employees interested in attending the IRA seminars should also make arrangements with their supervisors.

CHEERLEADING AND POM-PON AWARDS. The sixth annual Tri-State Cheerleading and Pom-Pon competition was held on Saturday, January 16, at ISUE. More than 200 participants took part in the day's events which were judged by the ISUE Cheerleaders and Feathershakers.

First place in the pom-pom competition went to the Plaza Park Pacerettes. The Pacerettes will perform their winning routine at the ISUE vs. Kentucky Wesleyan game on Saturday, January 30. St. John's Elementary School in Newburgh won first place in both the fifth and sixth grade, and seventh and eighth grade cheerleading competitions.

TELEPHONE DIRECTORY UPDATE. Extension 1911 has been issued to William Simmons, extension 1938 has been issued to Leon Rexing, and extension 1700 will be retained by Jim Baumeyer. Extension 1871 for Student Activities has been disconnected.

MESSAGE FROM THE AFFIRMATIVE ACTION OFFICE. In fall 1981, the revised version of the University's Affirmative Action Plan was included in the faculty and administrative handbook. Guidelines for Disabled Veterans, Veterans of the Vietnam Era and Handicapped Persons were included in the revised plan. In addition, Guidelines on Sexual Harassment, Acting Appointments and Filling Open Positions were incorporated into the plan.

AFFIRMATIVE ACTION MESSAGE (continued). Indiana State University Evansville is unequivocally pledged to principles of nondiscrimination, assuming fair and equitable treatment of all persons. The University has given assurance of compliance with national, state, and local civil rights legislation and enactments.

Indiana State University Evansville reaffirms its present policy of nondiscrimination and equal employment opportunity with respect to recruitment, hiring, training, promotion, and treatment of persons in all organizations, services, and programs under the legal control of the Trustees of Indiana State University which shall be maintained on a nondiscriminatory basis in regard to race, sex, religion, handicap, age, or national origin at all times.

Indiana State University Evansville will continue to take positive actions to ensure against discrimination directed to all persons. All members of the faculty and staff are expected to give full support to the University's commitment to equal opportunity and affirmative action.

Copies of the plan are available in the Personnel Office.

PEOPLE IN THE NEWS. Dr. Howard Dunn, professor of chemistry, has been notified by the law firm of Jenkins, Coffey, Hyland, Badger and Conrad that the U.S. Patent Office will issue his latest patent on February 9, 1982. This will be Dr. Dunn's 17th U.S. patent. His invention describes a new method for the purification of drinking water. The system will remove chloroform and other toxic organic chemicals from water, and the system is designed for commercial or home use. A paper describing the commercial system was published in the Proceedings of the Indiana Academy of Sciences, Volume 89, pp. 255-259, 1980.

Dr. Kenneth Settle, chairman of the division of business, is in Indianapolis this week serving on an accreditation team for the State Board for Vocational and Technical Education. The team is evaluating the business and data processing degree programs of the Indiana Vocational Technical College of Indianapolis.

MARKETPLACE.

For Sale

Three-bedroom brick home with 2½ car garage and 2 baths. Located at 213 Barbara Drive. Has many extras. \$77,900. Call Mrs. Richardson at 426-3339 or 985-3769.

Entertainment books selling for \$16 through January 1982. Will go up to \$20 beginning February 1. Call Mary at 1859.

1975 Buick Century. Light green, automatic, one owner. Good condition. \$1200. Call 985-2046 after 6 p.m.

1976 Chevy Suburban. All power. One owner. 52,000 miles. Trailer hitch and brakes in perfect condition. \$3495. Call 897-1340 or 897-0293.

1969 VW with rebuilt engine. Good tires. Body fair. \$795. Call 897-1340 or 897-0293.

MARKETPLACE (continued)

For Sale

1976 Superscope reciever, 15 watts per channel. \$45.
Avalon Hill bookshelf games- Panzerblitz, France 1940,
and Kriegspiel. \$5 per game. Two-man inflatable rubber
raft in good condition. \$35. Call extension 1790 or
422-4226.

White wicker bedroom furniture. Double headboard and frame,
oval mirror, night stand with double doors and shelf. Used
only in guest room. \$200. Phone 985-2958.

Accusplit model 725 digital electronic stopwatch. Use one
swimming season only. Like new. \$30. 985-3985.

FREE: Good home needed for cute, black, eight-week old
male kitten. Healthy and playful. Call Peggy at 1967.

Wanted

Any used furnishings for three softball players. Will
return items to owners. Contact Ruth Waller at 1846 or 1765.

Tenor saxophone. Call Dave at 1717.

Personal

From Rita Ritchie: I am soliciting donations of furniture
to set up housekeeping for a needy family. If you are
interested in helping, call me at extension 1865.

MENU. The University Dining Center will be open from 11:00 a.m. to
1:30 p.m. daily and features a soup and salad bar. The Sunday Buffet
is open from 11:00 a.m. to 1:30 p.m. The daily menu is subject to
change.

Thursday, January 28

Submarine Sandwich
Turkey Cutlet
Stromboli
Quesadillas

Friday, January 29

Batter-fried Fish
Pizza
Baked Ham
Macaroni and Cheese

Monday, February 1

Roast Beef w/ Mushroom gravy
Spaghetti w/Meat Sauce
Fish Basket
BBQ Beef

Tuesday, February 2

Pork Loin
Tacos
Chicken Filet Sandwich
French Dip Sandwich

Wednesday, February 3

Fried Chicken
Corned Beef and Cabbage
Pizza
Patty Melt

POSITIONS AVAILABLE. The following positions are available as of January 26, 1982. Indiana State University Evansville is subject to the requirements of Executive Order 11246 and is an Affirmative Action Employer. Interested individuals should contact the Personnel Office, AD101-A, extension 1770.

<u>Clerical Support</u>	<u>Department</u>	<u>Job Description</u>
Secretary Pay Grade 4	Security	Full-time secretarial position, 8 a.m. to 4:30 p.m., Monday through Friday in the Security office. Responsibilities include various clerical and telephone duties. Will assist in the maintenance of the daily log of all campus activities, registering autos, and issuing parking decals. Schedules University vehicles and maintains lost and found. Good typing and office skills required.
Custodial Worker Pay Grade 6	Physical Plant	Second shift custodial position available from 2:00 to 10:00 p.m., Monday through Friday. Responsibilities include the performance of general housekeeping duties, use of various types of industrial cleaning equipment and supplies. General housekeeping experience preferred.

Lost, yesterday, somewhere between Sunrise and Sunset,
two golden hours, each set with sixty diamond minutes.
No reward is offered for they are gone forever.

Horace Mann, Lost, Two Golden Hours