

University of Southern Indiana



All-Region Forward
Susan Ellsperman



All-Region and two-time All-GLVC
Forward Meagan Kempf



2010 Women's Soccer Media Guide

About USI...



Location

The University of Southern Indiana is located in Evansville, Indiana's third largest city. USI is a comfortable drive from the major metropolitan centers of Indianapolis, Cincinnati, Louisville, Nashville, and St. Louis.

The Campus

The Health Professions Center, Science Center, Wright Administration Building, the Education Center, and the Orr Center are located on the north side of campus. Rice Library, the University Center, the Liberal Arts Center, the Technology Center, and the Business and Engineering Center form the quadrangle in the center of campus. The Physical Activities Center and the Recreation and Fitness Center are located east of University Boulevard, a major thoroughfare through campus. Apartment buildings and residence halls are home to 2,700 students who live on campus.

Academic Life

The University enrolls 10,516 students and offers undergraduate majors in 70 areas of study. An ever-increasing number of post-graduate programs also are available to students who wish to continue their education. Opportunities are available for service learning, study abroad, and internships.

Campus Life

Outside the classroom, students have opportunities to participate in more than 90 organizations offering co-curricular and extra-curricular activities. Special interest clubs, student government, sororities and fraternities, music and drama groups, and other organizations enable the students to enjoy and contribute to campus life.

Residence Life

Students living on campus have their choice of two types of housing. Students can live in standard apartments or in suite-style housing in residence halls which have amenities such as Internet connections, wireless Internet, and cable television. Computer labs, laundromats, a convenience store, outdoor and indoor recreation areas, and student lounges contribute to an efficient living environment that has proven to be overwhelmingly popular to students. Meal plans also are available at the University Center, which is located in the center of campus.

Financial Assistance

USI provides families with an affordable way to higher education. While some families find that they can handle the cost of a USI education without financial assistance, others qualify for need-based financial packages, including grants, loans, and on-campus jobs.





2010 USI Soccer

2010 Women's Soccer Information

General

Name of School: University of Southern Indiana
City/Population: Evansville/280,000 (Metro area)
Founded: 1965
Enrollment: 10,516 (Fall 2009)
Nickname: Screaming Eagles
School Colors: Red, White, Blue
Field/Capacity: Strassweg Field/500
Affiliation: NCAA II
Conference: Great Lakes Valley
President: Dr. Linda L. M. Bennett
Alma Mater, Yr.: Cincinnati '74
Athletic Director: Jon Mark Hall
Alma mater, yr.: Murray State, '90
Athletic Dept. Phone: 812/464-1846
Ticket Office Phone: 812/465-7165
Athletic Trainer: David Maldonado
Trainer's Phone: 812/465-1298
Assistant Athletic Trainer: Becky McGinnis
Phone: 812/464-1955

History

Overall All-Time record: 119-123-12
Yrs. in NCAA Tournament/last: 1/1998
Last NCAA Division II post-season opponent: Ashland
Result: L 1-0 (3OT)

Coaching Staff

Head Coach: Krissy Engelbrecht
Alma mater, yr.: Evansville, 2000
Record at USI: 46-71-8 (7 years)
Career record: 46-71-8 (7 years)
GLVC record: 30-51-4 (7 years)
Soccer Office phone: 812/465-1041
Best time of day to reach coach: Mornings

2009 Team Information

2009 Overall record: 9-8-3
2009 Conference record: 7-5-2 (7th)
Starters returning/lost: 7/4
Letterwinners returning/lost: 11/10

Sports Information

Sports Information Director: Ray Simmons
SID Office Phone: 812/465-1622
Home Phone: 812/402-6435
Cell Phone: 812/760-9582
Assistant Sports Information Director: Dan McDonnell
Office Phone: 812/465-1121
Cell Phone: 812/589-2956
SID Fax: 812/465-1129
SID Mailing Address: 8600 University Blvd.
Evansville, IN 47712

2010 Women's Soccer Schedule

Date	Opponent	Time
Sept. 2	Bethel College (Tenn.)	5 p.m.
Sept. 5	at Northern Kentucky University*	Noon
Sept. 8	at Oakland City University	3 p.m.
Sept. 10	at Saint Joseph's College*	5 p.m.
Sept. 12	at University of Indianapolis*	Noon
Sept. 17	Lewis University*	7:30 p.m.
Sept. 19	University of Wisconsin-Parkside*	2:30 p.m.
Sept. 24	at Quincy University*	5 p.m.
Sept. 26	at University of Illinois at Springfield*	Noon
Oct. 1	Drury University*	7:30 p.m.
Oct. 3	Rockhurst University*	2:30 p.m.
Oct. 8	at Maryville University*	3:30 p.m.
Oct. 10	at Missouri Science & Technology*	Noon
Oct. 15	Urbana University (Ohio)	7 p.m.
Oct. 17	University of Missouri - St. Louis*	2:30 p.m.
Oct. 20	at McKendree University	6 p.m.
Oct. 22	Bellarmino University*	7:30 p.m.
Oct. 24	Kentucky Wesleyan College*	2:30 p.m.
Oct. 31-	GLVC Tournament	
Nov. 7	Site to be determined	
Nov. 12-14	NCAA II Midwest Regional	
	Site to be determined	
Nov. 19-21	NCAA II Women's Soccer Quarter-Final	
	Site to be determined	
Dec. 2-4	NCAA II Women's Soccer Final Four	
	Louisville, Kentucky	

*GLVC Games

**For the latest news and information
regarding Eagle Athletics, go to:**

gousieagles.com



2010 Preseason Notes



- The University of Southern Indiana women's soccer team earned a berth in the GLVC Tournament in 2009, the first time since 2005. USI lost to second seeded Quincy University, 1-0, in the first round of the tournament.

- The 9-8-3 mark was the second winning record since the 2000 season.

- USI was the 13th most-improved overall record in Division II in 2009. The Eagles went from 5-11-1 in 2008 to 9-8-3 in 2009.

- USI Head Coach Krissy Engelbrecht returns 11 letterwinners and seven starters, from the 2009 squad. Returning players are responsible for 72 percent of the goals scored by the Eagles last season.

- The 2010 Eagles are led by third-team All-Region junior forward Meagan Kempf and sophomore forward Susan Ellsperman. Ellsperman led USI in scoring with 18 points on a team-best seven goals and four assists. Kempf, who also was named third team All-GLVC, was second with 15 points on four goals and a team-best six assists.



Junior Meagan Kempf was named All-GLVC and All-Region as a sophomore

- Junior forward Meagan Kempf was named the GLVC Player of the Week last year for her efforts against nationally ranked University of Wisconsin-Parkside and the University of North Alabama and unranked Lewis University.



- USI's only appearance in the NCAA Division II Tournament came in 1997 when the Eagles advanced to the quarterfinals.
- The Eagles have 11 newcomers in 2010; they had eight new players in 2009.
- Third on the team in scoring last year was junior forward Nancy Newcomer, who had 12 points on five goals and two assists before her season was cut short by a knee injury.
- The returning USI junior goalkeepers, Stephanie Bodamer and Chelsea Connell, recorded shut-outs in seven of the nine wins in 2009. Bodamer, who started 19 games, had a 1.39 goals against average in 1747 minutes between the posts. Connell, who started one game, had a 0.74 GAA in three matches and 121 minutes between the posts.



Sophomore Susan Ellsperman led the team with seven goals as a freshman.



Junior Nancy Newcomer was second on the squad in goals scored.

2010 USI Roster



Numerical Roster

No.	Player	Pos.	Ht.	Cl.	Hometown/High School
0	Stephanie Bodamer	GK	5-11	Jr.	Highland, Indiana / Highland
00	Chelsea Connell	GK	5-7	Jr.	Alton, IL / Alton
1	Meagan Kempf	F	5-4	Jr.	Evansville, IN / Bosse
2	Lavonia Lewis	D	5-1	Jr.	Evansville, IN / Harrison
3	Jessica Scott	F	5-2	Fr.	Louisville, KY / Assumption
4	Susan Ellsperman	F	5-8	So.	Newburgh, IN / Memorial
5	Julia Kohnen	M	5-8	Fr.	Florissant, MO / Incarnate Word
6	Paige Nuelle	M	5-8	So.	St. Louis, MO / Kirkwood
7	Marisa Meneghetti	D	5-9	Fr.	Munster, IN / Munster
8	Mackenzie Wallace	GK	5-2	Fr.	Evansville, IN / Reitz
9	Tessa Faulkner	D	5-6	Fr.	Louisville, KY / Assumption
10	Makenzie Brinker	F	5-9	Fr.	Evansville, IN / North
11	Carrie Grochowski	D	5-7	Jr.	Homer Glen, IL / Lockport
12	Morgyn Graber	D	5-7	So.	Portage, IN / Portage
13	Brittany McCall	D	5-4	So.	Evansville, IN / Memorial
14	Jessica Gates	D	5-9	So.	Crown Point, IN / Lake Central
15	Catherine Decker	M	5-2	So.	Newburgh, IN / Memorial / Indiana
16	Brianna Whitmore	M	5-2	Fr.	Springfield, IL / Springfield
18	Samantha Houston	M/F	5-4	Fr.	Lafayette, IN / Jefferson
19	Levyn Bertram	GK	5-8	Fr.	Hazleton, IN / Princeton
20	Rachael Mayse	D	5-7	Fr.	Evansville, IN / North
21	Kelly Fitzgerald	F	5-8	So.	Fishers, IN / Cathedral
22	Samantha Smith	D	5-4	Jr.	DeSoto, IL / Carbondale
23	Lindsay Hack	D	5-7	Fr.	Sellersburg, IN / New Albany
25	Sara Garrett	D	5-8	Fr.	Corydon, KY / Henderson County
30	Nancy Newcomer	F	5-2	Jr.	Parma Heights, OH / Holy Name

Head Coach: Krissy Engelbrecht; **Assistant Coach:** Owen McCarthy; Shauni Boudia

Alphabetical Roster

No.	Player	Pos.
19	Levyn Bertram	GK
0	Stephanie Bodamer	GK
10	Makenzie Brinker	F
00	Chelsea Connell	GK
15	Catherine Decker-Ryan	M
4	Susan Ellsperman	F
9	Tessa Faulkner	D
21	Kelly Fitzgerald	F
25	Sara Garrett	D
14	Jessica Gates	D
12	Morgyn Graber	D
11	Carrie Grochowski	D
23	Lindsay Hack	D
18	Samantha Houston	M/F
1	Meagan Kempf	F
5	Julia Kohnen	M
2	Lavonia Lewis	D
20	Rachael Mayse	D
13	Brittany McCall	D
7	Marisa Meneghetti	D
30	Nancy Newcomer	F
6	Paige Nuelle	M
3	Jessica Scott	F
22	Samantha Smith	D
8	Mackenzie Wallace	D
16	Brianna Whitmore	M

Pronunciations

19	Levyn Bertram	Lev-in Bert-ram
0	Stephanie Bodamer	Bod-a-mer
10	Makenzie Brinker	Brink-er
00	Chelsea Connell	Con-L
15	Catherine Decker-Ryan	Decker
4	Susan Ellsperman	Ells-per-man
9	Tessa Faulkner	Faulk-ner
21	Kelly Fitzgerald	Fitz-ger-ald
25	Sara Garrett	Garr-ett
14	Jessica Gates	Gates
12	Morgyn Graber	Gray-ber
11	Carrie Grochowski	Grow-chow-ski
23	Lindsay Hack	Hack
18	Samantha Houston	How-ston
1	Meagan Kempf	Kem-pf
5	Julia Kohnen	Cone-n
2	Lavonia Lewis	La-von-ya Lewis
20	Rachael Mayse	Mays
13	Brittany McCall	Mc-Call
7	Marisa Meneghetti	Men-e-ghet-ee
30	Nancy Newcomer	New-comer
6	Paige Nuelle	Nell-ee
3	Jessica Scott	Scott
22	Samantha Smith	Smith
8	Mackenzie Wallace	Wall-ace
16	Brianna Whitmore	Whit-more

4

Player Biography Index

No.	Player	Page
19	Levyn Bertram	24
0	Stephanie Bodamer	7
10	Makenzie Brinker	22
00	Chelsea Connell	8
15	Catherine Decker-Ryan	23
4	Susan Ellsperman	11
9	Tessa Faulkner	22
21	Kelly Fitzgerald	17
25	Sara Garrett	26
14	Jessica Gates	16
12	Morgyn Graber	14
11	Carrie Grochowski	13
23	Lindsay Hack	25
18	Samantha Houston	24
1	Meagan Kempf	9
5	Julia Kohnen	20
2	Lavonia Lewis	10
20	Rachael Mayse	25
13	Brittany McCall	15
7	Marisa Meneghetti	21
30	Nancy Newcomer	19
6	Paige Nuelle	12
3	Jessica Scott	20
22	Samantha Smith	18
8	Mackenzie Wallace	21
16	Brianna Whitmore	23





Head Coach Krissy Engelbrecht

Krissy Engelbrecht is entering her eighth season as the head coach of the USI women's soccer program. In her first seven seasons, Engelbrecht has accumulated a record of 46-71-8 overall.

Under Engelbrecht's direction, the Eagles advanced to the GLVC Tournament for the first time since 2005, placing seventh. USI also had a GLVC regular season record of 7-5-2.

Engelbrecht also led the 2005 Eagles to their first GLVC Tournament appearance since 2000.

Engelbrecht came to USI from the University of Evansville where she was an assistant coach. Under former Evansville head coach Mick Lyon, Engelbrecht helped direct the Aces to the Missouri Valley Conference Championship in 2001.

In the community, she is the director of player development for the Blitz/Lady Blitz soccer organization.

Engelbrecht was an outstanding player for Evansville prior to becoming a coach. She was a three-time Missouri Valley Conference Player of the Year and All-Great Lakes Region team member, leading the Aces to four straight MVC titles and two NCAA Division I Tournament appearances. She was named to the MVC Hall of Fame in 2006 and the Evansville Hall of Fame in 2007.

Engelbrecht lives in Evansville with husband, Jeff, a former USI baseball player, and their son Aidan.



Engelbrecht through the Years

Year	Overall	GLVC	GLVC Finish
2003	6- 9- 1	3- 7- 0	9th
2004	6- 12- 0	3- 7- 0	9th
2005	9- 8- 2	8- 5- 0	5th
2006	4- 13- 0	2- 11- 0	12th
2007	7- 10- 1	5- 7- 1	T-10th
2008	5- 11- 1	2- 9- 1	11th
2009	9- 8- 3	7- 5- 2	7th
7 Years	46- 71- 8 (.400)	30- 51- 4 (.365)	



Assistant Coach Owen McCarthy

Owen McCarthy is in his third season at USI as an assistant coach for the women's soccer team. He began his collegiate coaching career in 2008 as a men's soccer student assistant.

McCarthy holds a USSF "D" coaching license after directing the southern Indiana district team to the Olympic Development Program. A former assistant at Memorial High School (Evansville, Indiana), he is a member of the Evansville Soccer Club coaching staff.

Prior to beginning his collegiate coaching career last year, McCarthy was a cadet at the United State Military Academy and was a member of Army's Division I soccer team in 2004-05. His collegiate soccer career was cut short after his freshman season due to injury.

McCarthy was a starting midfielder at the U.S. Military Academy Preparatory School (Mt. Monmouth, New Jersey) and spent a semester in residence training at the IMG Soccer Academy.

A Memorial High School graduate, McCarthy was a four-year member of the varsity soccer team and was a part of the Tigers' 2002 IHSA soccer championship. He also was a starter on the Indiana ODP State Team that won the ODP Region II championship.



Assistant Coach Shauni Boudia

Shauni Boudia makes the transition from student athlete to assistant coach in her first season on Head Coach Krissy Engelbrecht's staff. Boudia will assist in all facets of the team.

Boudia was a standout on the USI squad the last four seasons, leading the team in scoring as a sophomore and ranked second on the team as a junior. She finished her career with 28 career points on nine goals and 10 assists in 72 appearances.

The native of Noblesville, Indiana, is majoring in exercise science at USI.



#0 Stephanie Bodamer

Goalkeeper

5'11"...Junior

Highland, Indiana/Highland

MAJOR: Biology

2009: Recorded a career-best 1.39 goals against average with an 8-8-3 record as a sophomore...led the team with 98 saves in 19 matches and 18 starts between the posts...made a season-high 10 saves versus Western Kentucky University and Western Illinois University.

2008-09: Played in and started 16 of 17 matches as a freshman...posted a 2.03 goals against average in 1421 minutes of action...led the team with 101 saves...recorded a season-high 16 saves against Quincy University.

HIGH SCHOOL: Joins the Eagles after four seasons at Highland High School (Highland, Indiana)...was named second team All-District and All-Area and first team All-Conference...also was first team All-District, All-Area, and All-Conference at HHS as a junior.

PERSONAL: Born March 1, 1990...daughter of Ken and Pam Bodamer.



Career Statistics

	G/GS	G	SV	SHO	MIN	GAA
2008	16/16	32	101	0.0	1421:19	2.03
2009	19/18	27	98	6.0	1747:03	1.39
Total	35/34	59	199	6.0	3168:22	1.68

2010 Returning Players



#00 Chelsea Connell

Goalkeeper

5'7" ...Junior

Alton, IL/Alton

MAJOR: Health Services/Finance

2009: Appeared in three matches and made two starts as a sophomore...had a 0.74 goals against average in 121:42 minutes between the posts...made nine saves in three matches with a season-best seven saves against Urbana University.

2008: Appeared in one game as a freshman and earned her first collegiate shutout...had one save in her only start and 90 minutes of action.

HIGH SCHOOL: A four-year starter at Alton High School (Alton, Illinois) where she was the 2007 All-Alton Telegraph goalkeeper for large high schools.

CLUB SOCCER: Member of the Metro United Soccer Club.

PERSONAL: Born October 27, 1989...daughter of Andrew and Kim Connell.

Career Statistics

	G/GS	G	SV	SHO	MIN	GAA
2008	1/ 1	0	1	1	90:00	0.00
2009	3/ 2	1	7	1	121:42	0.74
Total	4/ 3	1	8	2	211:42	0.43





#1 Meagan Kempf

Forward

5'4"...Junior

Evansville, IN/Bosse

MAJOR: Health Services

2009: Named third team All-GLVC and NSCAA All-Region as a sophomore...ranked second on the team in scoring with 14 points on four goals and a team-high six assists...scored the game-winning goal against the University of Illinois-Springfield.

2008: Named third team All-GLVC after leading the team in scoring with 19 points on eight goals and three assists...scored a season-high two goals in the match with Northern Kentucky University and Oakland City University...recorded the game-winning goal against Urbana University, University of North Alabama, and Kentucky Wesleyan College...scored her first collegiate goal against Urbana.

HIGH SCHOOL: A four-time All-State soccer performer at Bosse High School (Evansville, Indiana)...finished her career as the BHS all-time leading scorer with 284 career points on 122 goals and 40 assists in four years...was a four-time All-City and All-District performer, while being honored three times as an All-SIAC player...also lettered in tennis.

CLUB SOCCER: Played for Evansville Elite Soccer Club.

PERSONAL: Born June 9, 1989...daughter of Neil and Terrie Kempf.



Career Statistics

	G/GS	G	A	PTS.
2008	17/17	8	3	19
2009	20/20	4	6	14
Total	37/37	12	9	33

2010 Returning Players



#2 Lavonia Lewis

Defender

5'1" ...Junior

Evansville, IN/Harrison

MAJOR: Social Work

2009: Started all 20 matches as a sophomore after making the transition from forward to defender...scored her only goal of the season in the tie with Bellarmine University.

2008: Scored three points as a freshman on one goal and one assist...played in 16 of the 17 matches during her first year, starting 14...assisted on the game-winning goal against Kentucky Wesleyan College.

HIGH SCHOOL: Named honorable mention All-State player at Harrison High School (Evansville, Indiana)...earned three first team All-City and All-Conference honors four seasons at HHS...was the top scorer the last three seasons for HHS...also lettered in track & field and cross country.

CLUB SOCCER: Top scorer of the Evansville Lady Courage.

PERSONAL: Born November 16, 1989...daughter of Bobby and Freda Lewis.

Career Statistics

	G/GS	G	A	PTS.
2008	16/14	1	1	3
2009	20/20	1	0	2
TOTAL	36/34	2	1	5





#4 Susan Ellsperman

Forward

5'8" ...Sophomore

Newburgh, IN/Memorial

MAJOR: Biology/ Pre-Medical Program

2009: Named NSCAA third team All-Region as a freshman...led the team with 18 points on seven goals and four assists...scored the game winning goal in the win over Saint Joseph's College and Missouri University of Science & Technology...scored a season-best two goals against Saint Joseph's and the University of Illinois-Springfield.

HIGH SCHOOL: Lettered in soccer and track at Memorial High School (Evansville, Indiana)...was a first team All-State selection and the Evansville Player of the Year in 2008...also received NSCAA All-Region honors in 2007 after posting 68 points on 22 goals and 24 assists...led the Tigers in points all four seasons...helped MHS to the 2008 Indiana State Championship, as well as three sectional titles (2005, 2006, 2008), a pair of regional crowns (2006 and 2008), and two semi-state appearances...member of the South squad for the Indiana High School All-Star Game...scored one goal and had two assists in the South's victory.

PERSONAL: Born January 28, 1991...daughter of Michael and Melody Ellsperman.

Career Statistics

	G/GS	G	A	PTS.
2009	20/19	7	4	18



2010 Returning Players



#6 Paige Nuelle

Midfielder

5'8"...Sophomore

St. Louis, MO/Kirkwood

MAJOR: Nursing

2009: Appeared in 17 matches as a freshman, starting 11...posted five points on two goals and one assist...scored the game-winning goal at Bethel College and Northern Kentucky University at home.

HIGH SCHOOL: Earned athletic letters in basketball and soccer at Kirkwood High School (St. Louis, Missouri)...named first team All-Conference in 2008 and helped KHS to a Missouri State Championship in 2006...also helped lead KHS to three straight Midwest Regional League titles...named Most Valuable Player for the South Team of the Missouri Athletic Club North-South Senior All-Star Games.

PERSONAL: Born 15, 1991...daughter of Steven and Beth Nuelle.

Career Statistics

	G/GS	G	A	PTS.
2009	17/11	2	1	5





#11 Carrie Grochowski

Defender

5'7"...Junior

Homer Glen, IL/Lockport

MAJOR: Business Administration/French

2009: Played in 14 matches as a sophomore.

2008: Scored three points on one goal and one assist in 15 matches as a freshman...made five starts during her first season... scored her first collegiate goal in the double-overtime tie with Saint Joseph's College.

HIGH SCHOOL: Lettered in soccer at Lockport Township High School (Lockport, Illinois)...was named All-Conference three straight seasons and All-Sectional in 2007 and 2008...voted LTHS Best Defender and the squad's Most Valuable Player.

CLUB SOCCER: Played for the Windy City Pride, an Illinois State Cup finalist, and the U.S. Club Soccer Regional Champion in 2007.

PERSONAL: Born September 7, 1989...daughter of Wayne and Vicki Grochowski.

Career Statistics

	G/GS	G	A	PTS.
2008	15/ 5	1	1	3
2009	14/ 0	0	0	0
TOTAL	29/ 5	1	1	3



2010 Returning Players



#12 Morgyn Graber

Defender

5'7" ...Sophomore

Portage, IN/Portage

MAJOR: Undecided

2009: Saw action in seven matches as a freshman.

HIGH SCHOOL: Lettered in soccer at Portage High School (Portage, Indiana) where she was Academic All-State in 2008 and was the PHS Scholar Athlete Award winner in 2008 and 2009...helped lead PHS to the Indiana sectional, regional, and semi-state championships in 2006 and the Duneland Athletic Conference championship in 2007.

CLUB SOCCER: Played for the MSA Mystique Premier Soccer Team in 2005-06 and the Indiana Magic since 2007.

PERSONAL: Born June 11, 1991...daughter of Scott Graber and Donalee Pontius-Graber.

Career Statistics

	G/GS	G	A	PTS.
2009	7/ 0	0	0	0





#13 Brittany McCall

Defender

5'4" ...Sophomore

Evansville, IN/Memorial

MAJOR: Biology

2009: Started all 20 matches in the USI defensive half as a freshman.

HIGH SCHOOL: Four-time All-City and All-SIAC defender for Memorial High School (Evansville, IN)...also was named All-District as a junior in 2007 and Academic All-City all four seasons...helped MHS to the 2008 Indiana State Championship as well as three sectional titles (2005, 2006, 2008), a pair of regional crowns (2006 and 2008), and two semi-state appearances...member of the South squad for the Indiana High School All-Star Game...named the Defensive Most Valuable Player in the South's shutout of the North.

CLUB SOCCER: Played for Evansville Soccer Club and the ISL League Championship team in 2006 and 2008.

PERSONAL: Born October 9, 1990...daughter of Gary and Lisa McCall.

Career Statistics

	G/GS	G	A	PTS.
2009	20/20	0	0	0



2010 Returning Players



#14 Jessica Gates

Defender

5'9"...Sophomore

Crown Point, IN/Lake Central

MAJOR: Nursing

2009: Started all 20 matches as a freshman, recording five points on one goal and three assists...scored her first collegiate goal at the University of Missouri-St. Louis...assisted on the game winning goal at Lewis University.

HIGH SCHOOL: Named third team All-State in 2008 for Lake Central High School (St. John, Indiana)...was the LCHS Defensive Most Valuable Player in 2007 and 2008...earned All-Duneland Athletic Conference and first team All-District honors the last two seasons...member of the North squad for the Indiana High School All-Star Game.

PERSONAL: Born August 9, 1990...daughter of Kevin and Linda Gates.

Career Statistics

	G/GS	G	A	PTS.
2009	20/20	1	3	5





#21 Kelly Fitzgerald

Forward

5'8" ...Sophomore

Fishers, IN/Cathedral

MAJOR: Psychology

2009: Played in six matches as a freshman.

HIGH SCHOOL: Comes to USI after lettering in soccer and track at Cathedral High School (Indianapolis, Indiana)... helped lead CHS to regional, sectional, and city soccer championships in 2007 and 2008...member of the CHS state championship team in 2007.

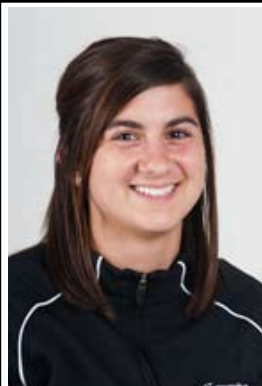
CLUB SOCCER: Played for the Indianapolis Soccer Club.

PERSONAL: Born July 5, 1990...daughter of Timothy Fitzgerald.

Career Statistics

	G/GS	G	A	PTS.
2009	6/ 0	0	0	0

2010 Returning Players



#22 Samantha Smith

Defender

5'4"...Junior

DeSoto, IL/Carbondale

MAJOR: Physical Education

2009: Appeared in all 20 matches as a sophomore, making six starts...scored her first collegiate goal in the win over Saint Joseph's College.

2008: Saw action in all 17 matches during her first season, making 16 starts in the USI backfield.

HIGH SCHOOL: Earned letters in soccer, basketball, and tennis at Carbondale Community High School...posted 45 career points at CCHS on 19 goals and seven assists...had a CCHS career-best 33 points as a freshman on 15 goals and three assists...named first team All-Conference as a freshman, junior, and senior...selected as All-Sectional as a junior and senior...CCHS Defensive Player of the Year as a senior...missed her sophomore season to a knee injury...helped CCHS to the 2004 and 2007 regional titles.

CLUB SOCCER: Played for the Southern Illinois Sting for nine seasons...also played for the Belleville Futbol Club and Metro United.

PERSONAL: Born January 11, 1990...daughter of Clifford and Judi Smith.



Career Statistics

	G/GS	G	A	PTS.
2008	17/16	0	0	0
2009	20/ 6	1	0	2
Total	37/22	1	0	2





#30 Nancy Newcomer

Forward

5'2" ...Junior

Parma Heights, OH/Holy Name

MAJOR: Engineering

2009: Played in 12 matches, starting 10, after missing eight games due to injury...ranked third on the team with 12 points on five goals and two assists...tied a career-high with two goals in a game against Bethel College and Rockhurst University...assisted on the game-winning goal in the win over Northern Kentucky University.

2008: Ranked third on the team with nine points on four goals and one assist...scored the game-winning goal in the victory over Oakland City University...posted her first collegiate goal and had a season-best two goals in the win over Urbana University...played in 16 matches during her first season, starting 11 contests.

HIGH SCHOOL: Played for Holy Name High School (Parma Heights, Ohio)...led HNHS to the Division II State Cup in 2006 and the Division I District finals in 2007...the 2005 first team All-Cleveland performer also had 165 career points on 55 goals and 55 assists.

CLUB SOCCER: Member of the Premier Whitecaps and the Premier NEOFC soccer clubs.

PERSONAL: Born September 27, 1989...daughter of Thomas and Jane Newcomer.



Career Statistics

	G/GS	G	A	PTS.
2008	16/11	4	1	9
2009	12/10	5	2	12
Total	28/21	9	3	21

2010 Newcomers



#3 Jessica Scott

Forward

5'2" ...Freshman

Louisville, KY/Assumption

MAJOR: Occupational Therapy

HIGH SCHOOL: Earned letters in soccer, winter track, and kick boxing at Assumption High School (Louisville, Kentucky)...named second team All-District in 2009 as a defender on the soccer team...scored 28 points as a sophomore midfielder on nine goal and 10 assists.

CLUB SOCCER: Member of the Kentucky Olympic Development Program and Javanon Soccer Club...has been the team captain for Javanon between 2007 and 2010.

PERSONAL: Born January 29, 1992...daughter of Jeffrey and Teri Scott.



#5 Julia Kohnen

Midfielder

5'8" ...Freshman

Florissant, MO/Incarnate Word

MAJOR: Business Administration

HIGH SCHOOL: Earned letters in soccer and basketball at Incarnate Word Academy (St. Louis, Missouri).

CLUB SOCCER: Member of the JB Marine Soccer Club which was second in 2008 and 2009 in Missouri.

PERSONAL: Born July 29, 1992...daughter of Brad and Jean Kohnen.



#7 Marisa Meneghetti

Defender
5'9" ...Freshman
Munster, IN/Munster
MAJOR: Food and Nutrition

HIGH SCHOOL: Lettered in soccer and basketball at Munster High School (Munster, Indiana)...earned three first team All-Conference honors (2007-09) and two All-Area awards (2008-09)...voted team defensive Most Valuable Player three times at MHS (2007-09).

PERSONAL: Born September 1, 1991...daughter of Mark and Lori Meneghetti...sister of Lauren Meneghetti, who plays for USI women's basketball team.



#8 Mackenzie Wallace

Defender
5'2" ...Freshman
Evansville, IN/Reitz
MAJOR: History

HIGH SCHOOL: Lettered in soccer, basketball, and track at Reitz High School (Evansville, Indiana)...four-time first team All-City selection (2006-09), while earning three first team All-Conference awards (2007-09)...named second team All-Conference once (2006)...named first team All-District four times (2006-09) and second team All-State twice (2008-09).

CLUB SOCCER: Member of the Evansville Soccer Club.

PERSONAL: Born August 21, 1991...daughter of Mark and Toni Wallace.

#9 Tessa Faulkner

Defender

5'6" ...Freshman

Louisville, KY/Assumption

MAJOR: Pre-Radiological and Imaging Sciences

HIGH SCHOOL: Lettered in soccer at Assumption High School (Louisville, Kentucky)...named All-Region in 2008 and to the Lexington Catholic All-Tournament team in 2009.

CLUB SOCCER: Member of the Kentucky Olympic Development Program and the Javanon...team captain of Javanon 2007-10.

PERSONAL: Born October 7, 1991...daughter of Peter and Susan Faulkner.



#10 Makenzie Brinker

Forward

5'9" ...Freshman

Evansville, IN/North

MAJOR: Biology

HIGH SCHOOL: Lettered in soccer and basketball at North High School (Evansville, Indiana)...first team All-SIAC and All-City in 2007...named All-Academic in 2007 and 2008.

CLUB SOCCER: Member of the Evansville Soccer Club which was the state finalist in 2008 and the ISL Premier League champions in 2006 and 2008.

PERSONAL: Born August 22, 1991...daughter of Don and Tammy Brinker.

#15 Catherine Decker

Midfielder
5'2" ...Sophomore
Newburgh, IN/Memorial
MAJOR: Journalism

TRANSFER: Transferred to USI from Indiana University...did not play soccer in two seasons at Indiana.

HIGH SCHOOL: Lettered in soccer at Memorial High School (Evansville, Indiana).

PERSONAL: Born April 12, 1990...daughter of Britt Decker and Laura Ryan.



#16 Brianna Whitmore

Midfielder
5'2" ...Freshman
Springfield, IL/Springfield
MAJOR: Pre-Radiological and Imaging Science

HIGH SCHOOL: Lettered in soccer at Springfield High School (Springfield, Illinois)...named Academic All-Conference in 2008.

PERSONAL: Born February 1, 1992...daughter of Dan Whitmore and Pam Foutch.

#18 Samantha Houston

Midfielder/Defender
5'4"...Freshman
Lafayette, IN/Jefferson
MAJOR: Special Education

HIGH SCHOOL: Lettered in soccer at Lafayette Jefferson High School (Lafayette, Indiana)...named Indiana All-District and to the Indiana All-Star team as a senior....also honored by being named LJHS Most Valuable Player, All-Conference and All-Area in 2009...earned All-Conference honors in 2007 and 2008.

CLUB SOCCER: Played for Lafayette Football Club.

PERSONAL: Born June 23, 1991...daughter of Jeff and Carol Houston



#19 Levyn Bertram

Goalkeeper
5'8"...Freshman
Hazelton, IN/Princeton
MAJOR: Undecided

HIGH SCHOOL: Earned letters in soccer and softball at Princeton High School (Princeton, Indiana)...three-time All-County and All-Conference (2007-09) performer...also named All-District in 2008.

CLUB SOCCER: Member of the Evansville Elite club soccer program.

PERSONAL: Born October 31, 1991...daughter of Tim and Angie Bertram.

#20 Rachael Mayse

Defender
5'7" ...Freshman
Evansville, IN/North
MAJOR: Undecided

HIGH SCHOOL: Earned letters in soccer at North High School (Evansville, Indiana)...named Academic All-City twice.

CLUB SOCCER: Played club soccer for Evansville United, Evansville Lady Blitz, and the Evansville Soccer Club.

PERSONAL: Born June 18, 1991...daughter of Troy and Sally Bennett.



#23 Lindsay Hack

Forward
5'7" ...Freshman
Sellersburg, IN/New Albany
MAJOR: Accounting and Professional Services

HIGH SCHOOL: Lettered in soccer and diving at New Albany High School (New Albany, Indiana)...named All-Conference in 2007 and the top defender in 2007 and 2009.

PERSONAL: Born September 10, 1991...daughter of Dean and Julie Hack.

2010 Newcomers



#25 Sara Garrett

Defender

5'8" ...Freshman

Corydon, KY/Henderson County

MAJOR: Accounting

HIGH SCHOOL: Lettered in soccer and basketball at Henderson County High School (Henderson, Kentucky)...named Academic All-State in soccer and basketball all four years...named to the All-District team in 2007 and 2009 and All-Region in 2008.

CLUB SOCCER: Played club soccer for the Owensboro United Soccer Club.

PERSONAL: Born July 11, 1992...daughter of Jim and Lisa Garrett.





2009 USI Statistics

Overall: 9-8-3 Conf: 7-5-2 Home: 4-4-1 Away: 5-4-2 Neut: 0-0-0

## Name	GP-GS				SHOTS				YC-RC	GW	PK-ATT
		G	A	Pts	Sh	Shot%	SOG	SOG%			
3 Ellsperman, Susan	20-19	7	4	18	64	.109	34	.531	0-0	2	0-0
1 Kempf, Meagan	20-20	4	6	14	65	.062	23	.354	0-0	1	0-0
30 Newcomer, Nancy	12-10	5	2	12	39	.128	22	.564	3-1	-	0-0
4 Teagarden, Katie	20-20	3	2	8	21	.143	15	.714	0-0	1	0-0
9 Georgeff, Kara	20-12	3	0	6	27	.111	12	.444	4-0	1	0-0
6 Nuelle, Paige	17-11	2	1	5	21	.095	11	.524	1-1	2	0-0
14 Gates, Jessica	20-20	1	3	5	15	.067	6	.400	1-0	1	0-0
7 Caksackkar, Rachel	18- 8	1	2	4	10	.100	9	.900	0-0	1	0-0
10 Boudia, Shauni	20-19	1	0	2	31	.032	14	.452	2-0	0	0-0
2 Lewis, Lavonia	20-20	1	0	2	6	.167	4	.667	3-0	0	0-0
22 Smith, Samantha	20-6	1	0	2	5	.200	3	.600	0-0	0	0-0
15 Conquest, Alison	19-14	0	1	1	2	.000	1	.500	2-1	0	0-0
18 Hancock, Haley	8-0	0	0	0	3	.000	1	.333	0-0	0	0-0
12 Graber, Morgyn	7-0	0	0	0	3	.000	1	.333	0-0	0	0-0
11 Grochowski, Carrie	14-0	0	0	0	2	.000	2	1.000	0-0	0	0-0
25 Keusch, Jenna	8-1	0	0	0	1	.000	0	.000	0-0	0	0-0
21 Fitzgerald, Kelly	6-0	0	0	0	1	.000	0	.000	0-0	0	0-0
13 McCall, Brittany	20-20	0	0	0	1	.000	1	1.000	0-0	0	0-0
00 Connell, Chelsea	3-2	0	0	0	0	.000	0	.000	0-0	0	0-0
0 Bodamer, Stephanie	19-18	0	0	0	0	.000	0	.000	0-0	0	0-0
Total.....	20	29	21	79	317	.091	159	.502	17-3	9	0-0
Opponents.....	20	28	23	79	298	.094	136	.456	17-1	8	1-2

## Name	GP-GS	GOAL AVERAGE			SAVES		RECORD			Shots	
		Minutes	GA	Avg	Saves	Pct	W	L	T	Sho	Faced
00 Connell, Chelsea	3-2	121:42	1	0.74	9	.900	1	0	0	1	17
0 Bodamer, Stephanie	19-18	1747:03	27	1.39	98	.784	8	8	3	6	278
Total.....	20	1868:45	28	1.35	108	.794	9	8	3	7	295
Opponents.....	20	1868:45	29	1.40	130	.818	8	9	3	5	315

Team saves: 1



2009 Results



GOALS BY PERIOD

	1st	2nd	OT	OT2	Total
Southern Indiana....	13	16	0	0	- 29
Opponents.....	13	14	1	0	- 28

SHOTS BY PERIOD

	1st	2nd	OT	OT2	Total
Southern Indiana.....	162	145	9	1	- 317
Opponents.....	139	147	8	4	- 298

SAVES BY PERIOD

	1st	2nd	OT	OT2	Total
Southern Indiana.....	49	53	3	3	- 108
Opponents.....	66	59	4	1	- 130

CORNER KICKS BY PRD

	1st	2nd	OT	OT2	Total
Southern Indiana.....	59	52	6	2	- 119
Opponents.....	49	52	2	2	- 105

Date	Opponent	Score	Overall	Conf
Aug. 28	at Western Kentucky	2-3 L	0- 1- 0	0- 0- 0
Aug. 31	at Bethel	4-3 W	1- 1- 0	0- 0- 0
*Sept. 3	#14 NORTHERN KENTUCKY	1-0 W	2- 1- 0	1- 0- 0
Sept. 6	WESTERN ILLINOIS	0-2 L	2- 2- 0	1- 0- 0
*Sept. 11	#12 INDIANAPOLIS	1-2 L	2- 3- 0	1- 1- 0
*Sept. 13	SAINT JOSEPH'S	4-0 W	3- 3- 0	2- 1- 0
Sept. 16	NORTH ALABAMA	2-2 T O2	3- 3- 1	2- 1- 0
*Sept. 18	at #17 UW-Parkside	1-1 T O2	3- 3- 2	2- 1- 1
*Sept. 20	at Lewis University	1-0 W	4- 3- 2	3- 1- 1
*Sept. 25	ILL.-SPRINGFIELD	4-0 W	5- 3- 2	4- 1- 1
*Sept. 27	QUINCY	0-2 L	5- 4- 2	4- 2- 1
*Oct. 2	at Rockhurst	2-3 L OT	5- 5- 2	4- 3- 1
*Oct. 4	at Drury Panthers	0-3 L	5- 6- 2	4- 4- 1
*Oct. 9	MISSOURI S&T	1-0 L	6- 6- 2	5- 4- 1
*Oct. 11	MARYVILLE	0-4 L	6- 7- 2	5- 5- 1
*Oct. 16	at Missouri-St. Louis	1-0 W	7- 7- 2	6- 5- 1
Oct. 18	at Urbana	2-0 W	8- 7- 2	6- 5- 1
*Oct. 23	at Kentucky Wesleyan	2-1 W	9- 7- 2	7- 5- 1
*Oct. 25	at #24 Bellarmine Univ.	1-1 T O2	9- 7- 3	7- 5- 2
>Nov. 1	at Quincy	0-1 L	9- 8- 3	7- 5- 2

*GLVC Games; >GLVC Tournament

TEAM	RECORD W-L-T	ATTEND	Dates	Total	Average
Overall:	9- 8- 3	Total:	20	3208	160
Conference:	7- 5- 2	Home:	9	1315	146
Home:	4- 4- 1	Away:	11	1893	172
Away:	5- 4- 2	Neutral:	0	0	0
Neutral:	0- 0- 0				
Overtime:	0- 1- 3				





2009 GLVC Results

2009 GLVC Women's Soccer Standings

School	GLVC	Pct.	Overall	Pct	Streak
Northern Kentucky *	12-2-0	.857	19-2-1	.886	T1
Bellarmine *	10-2-1	.808	14-4-1	.763	L1
Quincy *	10-2-1	.808	15-6-1	.705	L1
Indianapolis *	11-3-0	.786	15-6-0	.714	L2
Drury *	10-4-0	.714	13-6-0	.684	L2
UW-Parkside *	9-3-2	.714	11-4-3	.694	L1
Southern Indiana *	7-5-2	.571	9-8-3	.525	L1
Rockhurst *	6-7-1	.464	7-10-1	.417	L3
Missouri S&T	5-8-0	.385	5-9-1	.367	L3
Lewis	4-8-1	.346	5-9-2	.375	W2
Maryville #	4-9-1	.321	5-11-1	.324	L5
Missouri-St. Louis	4-9-1	.321	4-11-1	.281	L3
Kentucky Wesleyan	4-10-0	.286	7-11-1	.395	L3
Saint Joseph's	2-12-0	.143	3-14-0	.176	W1
Illinois-Springfield #	0-14-0	.000	2-14-0	.125	L14

* Clinched GLVC Tournament Berth; # Ineligible for GLVC Tournament

All-GLVC Honors

Offensive Player of the Year: Jenna Boyko, Quincy

Defensive Player of the Year: Abby Schuhmann, Bellarmine

Freshman of the Year: Shelby Spinelli, Indianapolis

Coach of the Year: Bob Sheehan, Northern Kentucky

ALL-GLVC FIRST TEAM

Forwards

Shannon Becker, UW-Parkside

Ashley Seehase, UIndy

Nicole Williams, Drury

Midfielders

Jenna Boyko, Quincy

Amanda Mason, Northern Kentucky

Meredith Novak, UW-Parkside

Backs

Sarah Colvin-Fritz, Drury,

Kristi Hofmeyer, Northern Kentucky

Abby Schuhmann, Bellarmine

Meghan Roberts, Quincy

Goalkeeper

Jessie Sanderson, Drury

ALL-GLVC SECOND TEAM

Forwards

Amy Lindley, Rockhurst.

Amanda Moore, Bellarmine

Amanda Reese, UIndy.

Shelby Spinelli, UIndy

Midfielders

Kristen Chinn, Kentucky Wesleyan

Sarah Goodman, Drury

Lauren Triplett, Bellarmine

Becky Zirlin, UW-Parkside

Backs

Cristina Fugedy, Bellarmine

Jessica McNamara, Lewis

Haley Miller, UIndy

Goalkeepers

Toni Eye, Quincy

ALL-GLVC THIRD TEAM

Forwards

Danielle Hogue, Northern Kentucky

Katie Pritchard, Drury

Aimee Ubriaco, Quincy

Midfielders

Meagan Kempf, Southern Indiana

Melia Miller, Missouri S&T

Megan Schwermer, Quincy

Backs

Lauren Dieckmann, Maryville

Caitlin Moon, UW-Parkside

Bailey Randol, Drury

Chelsey Schumacher, Rockhurst

Goalkeepers

Cassie Glodowski, UW-Parkside



USI Record Book



Team Records

Scoring

POINTS (Game): 37 vs. Oakland City (Sept. 28, 2001)

GOALS (Game): 13 vs. Oakland City (Sept. 28, 2001)
(Season): 58 (1998)

SCORING AVERAGE (Season): 2.79 (1997)

ASSISTS (Game): 6 vs. IU/PU-Ft. Wayne (Oct. 9, 1999)

Defense

SAVES (Game): 18 vs. Christian Brothers (Sept. 13, 2003)
(Season): 125 (2005)

SAVES PER GAME (Season): 7.5 (2003)

GOALS AGAINST AVERAGE (Season): 0.56 (1998)

SHUTOUTS (Season): 12 (1998)

Miscellaneous

CONSECUTIVE WINS: 7 (1998)

UNBEATEN STREAK: 12 (1998)

CONSECUTIVE HOME WINS: 6 (1998)

CONSECUTIVE HOME UNBEATEN STREAK: 11 (1998)

CONSECUTIVE CONFERENCE WINS: 6 (1998)

CONFERENCE GAMES UNBEATEN STREAK: 6 (1998)

CONSECUTIVE SHUTOUTS: 6 (2000)

WINS IN A SEASON: 18 (1998)

CONSECUTIVE WINNING SEASONS: 4 (1997 - 2000)

HIGHEST WIN-LOSS PERCENTAGE: 818 (1998)

LEAST GOALS ALLOWED IN A SEASON: 13 (1998), 13 (2000)

CONSECUTIVE SHUTOUT MINUTES: 554.34 (2000)

Individual Records

SCORING

POINTS (Game): 7 - Megan Russell vs. Gardner Webb (Sept. 5, 1998)

(Season): 38 - Megan Russell (1998)

(Career): 1. 107 - Stephanie Minor (1997-2000)

2. 91 - Megan Russell (1996-99)

3. 57 - Julie Collins (2004-07)

4. 55 - Alisann Shetler (2001-04)

5. 51 - Aisha Earle Smith (2000-03)

GOALS (Game): 3 - Courtney Reeder vs. Brescia (Oct. 9, 2002)

3 - Kristin Light vs. IPFW (Sept. 29, 2000)

3 - Kelly Lewis vs. IU/PU-Ft. Wayne (Oct. 9, 1999)

3 - Megan Russell vs. Gardner Webb (Sept. 5, 1998)

(Season): 12 - Stephanie Minor (1998),

12 - Megan Russell (1998)

(Career): 1. 39 - Stephanie Minor (1997-2000)

2. 32 - Megan Russell (1996-99)

3. 25 - Alisann Shetler (2001-04)

4. 22 - Julie Collins (2004-07)





USI Record Book

ASSISTS (Game): 3-Stephanie Minor vs. IU/PU-Ft. Wayne (Sept. 29, 2000)
vs. IU/PU-Ft. Wayne (Oct. 9, 1999)
vs. Indianapolis (Sept. 20, 1996)
3-Kristi Butler vs. Kentucky Wesleyan (Oct. 9, 1996)

(Season): 14 - Megan Russell (1998)

(Career): 1. 29 - Stephanie Minor (1997-2000)
2. 27 - Megan Russell (1996-99)
3. 16 - Jessica Pigman (1996-98)
4. 13 - Aisha Earle-Smith (2000-03)
13 - Julie Collins (2004-07)

GOALKEEPING

SAVES (Game): 17- Aude de La Salle vs. Minnesota State (Sept. 9, 2001)
vs. Northern Kentucky (Oct. 21, 2001)

(Season): 117-Meagan Homolla (2005)

(Career): 1. 325 - Meagan Homolla (2004-07)
2. 250 - Aude de La Salle (2000-02)
3. 194 - Angie Gries (1996-99)
4. 151 - Casey Hrvatin (2003-05)
5. 62 - Heather Heseman (1997-2000)

GOALS AGAINST AVERAGE

(Season, Minimum of 1,200 minutes): 0.44 Heater Heseman (2000)*

(Career, Minimum of 2,400 minutes): 1. 0.67 - Heather Heseman (1997-2000)
2. 0.77 - Angie Gries (1996-99)
3. 1.71 - Aude de La Salle (2000-2002)
4. 1.90 - Meagan Homolla (2004-07)
5. 2.11 - Casey Hrvatin (2003-05)

SOLO SHUTOUTS (Season): 9.0 - Angie Gries (1998)

(Career): 1. 27.5 - Angie Gries (1996-99)
2. 14.5 - Heather Heseman (1997-2000)
3. 8.0 - Meagan Homolla (2004-07)
4. 6.0 - Aude de La Salle (2000-02)

MISCELLANEOUS

FASTEST GOAL FROM START OF GAME

1:11 - Kristy Weber vs. Kentucky Wesleyan (Oct. 9, 1996)

FASTEST CONSECUTIVE GOALS BY USI

:14 - Jessica Pigman & Kristy Weber vs. Ashland (Sept. 21, 1996)

CONSECUTIVE GAMES WITH AT LEAST ONE GOAL

4 - Stephanie Minor (2000)

CONSECUTIVE SHUTOUT MINUTES

419.34 Heather Heseman (2000)



USI Record Book



All-Time Team Records

Year	Overall	GLVC
1996	7- 9- 1	2- 6- 1
1997	13- 6- 0	5- 4- 0
1998	18- 3- 1	9- 1- 0
1999	10- 7- 1	8- 2- 1
2000	13- 5- 1	8- 2- 1
2001	4- 12- 0	2- 7- 0
2002	8- 10- 0	3- 7- 0
2003	6- 9- 1	3- 7- 0
2004	6- 12- 0	3- 7- 0
2005	9- 8- 2	8- 5- 0
2006	4- 13- 0	2- 11- 0
2007	7- 10- 1	5- 7- 1
2008	5- 11- 1	2- 9- 1
2009	9- 8- 3	7- 5- 1
Total	119-123-13 (.492)	67-80- 7 (.458)

Team Accomplishments

- 1996: Ranked as high as 25th nationally
GLVC Tournament
- 1997: GLVC Tournament
- 1998: Ranked as high as 4th nationally;
Central Region Champion; advanced to Elite Eight
of the NCAA Tournament; GLVC Tournament Finalist
- 1999: Preseason 10th nationally
GLVC Tournament Final Four
- 2000: GLVC Tournament
- 2005: GLVC Tournament
- 2009: GLVC Tournament

ALL-TIME COACHING RECORDS

Greg Stone (1996-98)	38-18- 2 (.672)
Bill Wilkins (1999-2002)	35-34- 2 (.507)
Krissy Meek (2003-Present)	41-60- 7 (.412)

AWARDS AND HONORS

ALL-AMERICAN

- Amy Henkhaus- 1998 (1st Team)
- Megan Russell- 1998 (2nd Team)

ALL-REGION

- Megan Russell- 1996 (2nd Team), 1998 (1st Team)
- Stephanie Minor- 1997 (2nd Team), 1998 (1st Team),
1999 (1st Team), 2000 (2nd Team)
- Jessica Pigman- 1998 (1st Team)
- Amy Henkhaus- 1998 (1st Team)
- Krista Weinzapfel- 1999 (1st Team)
- Meagan Kempf- 2009 (3rd Team)
- Susan Ellsperman- 2009 (3rd Team)

ALL-GLVC

- Anne Bristol-1996 (2nd Team), 1997 (1st Team)

- Megan Russell-1997 (2nd Team), 1998 (1st Team)
1999 (1st Team)
- Angie Gries-1997 (2nd Team), 1999 (2nd Team)
- Stephanie Minor-1997 (2nd Team), 1998 (1st Team),
1999 (1st Team), 2000 (1st Team)
- Amy Henkhaus- 1998 (1st Team)
- Jessica Pigman- 1998 (2nd Team)
- Krista Weinzapfel - 1999 (1st Team), 2000 (2nd Team)
- Kelly Lewis - 1999 (2nd Team)
- Aimee Muller-2001 (2nd Team)
- Courtney Reeder-2002 (2nd Team)
- Julie Collins-2005 (2nd Team)
- Alisann Shetler-2005 (Honorable Mention)
- Meagan Homolla-2005 (Honorable Mention)
- Meagan Kempf-2008 (3rd Team), 2009 (3rd Team)

GLVC FRESHMAN OF THE YEAR

- Stephanie Minor, 1997

COACH OF THE YEAR

- Greg Stone- 1998 (Central Region Coach of the Year)

ACADEMIC ALL-GLVC

- Danielle Eli-1996
- Julie Houser-1996, 1997
- Cathy Keeping-1996
- Jessica Pigman-1996, 1997, 1998
- Megan Russell-1996, 1997, 1998, 1999
- Kristi Butler-1997, 1998, 1999
- Joanna Dean-1997
- Shelly Dixon-1997
- Amy Henkhaus-1997, 1998, 1999, 2000
- Megan Ehlers-1998, 2000
- Heather Heseman-1998, 1999, 2000
- Stephanie Minor-1998, 1999, 2000
- Kayla Scheller- 1998, 1999, 2000, 2001
- Kristy Weber- 1998
- Andrea Barchet-1999
- Pleasant Lant-1999, 2001, 2002
- Amy Zawada-1999
- Aude de La Salle-2000, 2001, 2002
- Rachel Meier-2001, 2002
- Megan Fitzler-1999, 2001, 2002
- Sarah Jones-2001
- Jill Hejlek-2002
- Aimee Muller-2002
- Robin Petty-2002
- Ali Beal-2003
- Rebeca Cripe-2003, 2004, 2005, 2006
- Katy Ferguson-2003, 2004
- Mindy Gardner-2003
- Megan Williams-2003, 2004, 2005, 2006
- Keri Land- 2004, 2005, 2006, 2007
- Jessica Stawick-2004, 2005, 2006
- Jessica Snyder-2005, 2006, 2007
- Casey Alexander-2006
- Katie Barisano-2006, 2007
- Jaclyn Clements-2006, 2007
- Julie Collins-2006
- Cara Jansen-2006, 2007, 2008





USI Record Book

Academic All-GLVC (cont.)

Serena Lowenthal-2006
Katie Teagarden-2006, 2007, 2008
Jenna Keusch-2007, 2008
Stephanie Bodamer-2008
Chelesea Connell-2008
Carrie Grochowski-2008
Kaycie Hibdon-2008

CAPTAINS

1996 Megan Russell, Jessica Pigman
1997 Megan Russell, Jessica Pigman
1998 Megan Russell, Jessica Pigman
1999 Megan Russell, Stephanie Minor, Amy Henkhaus
2000 Megan Elhers, Amy Henkhaus, Stephanie Minor
2001 Kristen Light, Kayla Scheller
2002 Aimee Muller, Jill Hejlek
2003 Aisha Earle-Smith, Lisa Stucki
2004 Brooklyn Gant, Alisann Shetler, Lisa Stuck
2005 Brooklyn Gant, Alisann Shetler
2006 Rebecca Cripe, Kara Marcum, Megan Williams
2007 Keri Land, Katie Barisano
2008 Katie Teagarden, Shauni Boudia, Jessica Snyder,
Alison Conquest
2009 Katie Teagarden, Alison Conquest

SERIES RECORD VS. OPPONENTS

Alma	1- 0- 0
Ashland	1- 2- 0
Bellarmino	6- 7- 1
Belmont Abbey	1- 1- 0
Bethel	1- 0- 0
Brescia	2- 0- 0
Christian Brothers	1- 1- 0
Davis & Elkins	1- 0- 0
Drury	0- 5- 0
Evergreen State	1- 0- 0
Ferris State	1- 3- 0
Findlay	2- 0- 1
Fontbonne	1- 0- 0
Gardner Webb	1- 0- 0
Grand Valley State	1- 5- 0
Harris Stowe	1- 0- 0
Hawaii Pacific	1- 0- 0
Hillsdale	1- 0- 0
Illinois-Springfield	1- 0- 0
Indianapolis	7- 8- 0
Indiana Wesleyan	1- 0- 0
IPFW	2- 0- 0
Kentucky Wesleyan	12- 0- 0
Lewis	10- 3- 1
Lincoln Memorial	1- 0- 0
Maryville	0- 1- 0
McKendree	4- 3- 0
Mercyhurst	1- 1- 0
Midway	0- 1- 0
Minnesota State	1- 1- 0
Missouri Baptist	2- 1- 0

Missouri S&T	5- 3- 0
Missouri-St. Louis	6- 9- 0
Montevallo	1- 0- 0
North Alabama	2- 0- 1
Northern Kentucky	4-11- 0
Northern Michigan	0- 2- 0
Oakland City	3- 0- 0
Pacific Lutheran	1- 0- 0
Presbyterian	0- 1- 0
Principia	2- 0- 0
Quincy	5- 9- 1
Rockhurst	0- 6- 0
Saginaw Valley State	0- 1- 0
St. Cloud State	0- 1- 0
Saint Joseph's	6- 9- 2
SIU-Edwardsville	2-11- 1
Southern Oregon	0- 1- 0
Tiffin	3- 0- 1
Transylvania	1- 1- 0
Truman State	0- 3- 1
Urbana	2- 0- 0
West Virginia Wesleyan	0- 0- 1
Western Illinois	1- 0- 0
Western Kentucky	0- 1- 0
Wheeling Jesuit	1- 2- 0
Wisconsin-Parkside	8- 7- 1



USI Year-by-Year



1996 (7-9-1, 2-6-1 GLVC)

MERCYHURST	W	2-0
Alma+	W	4-0
Indiana Wesleyan+	W	2-0
Wisconsin-Parkside*	W	2-0
Lewis*	L	2-3
MIDWAY	L	1-3
Ashland	W	3-1
Tiffin	W	3-0
Missouri-St. Louis*	L	2-3
SIU-Edwardsville*	L	1-4
BELLARMINE*	L	0-1
QUINCY*	T	1-1
KENTUCKY WESLEYAN*	W	7-0
Missouri-Rolla	L	0-5
Saint Joseph's*	L	1-2
Indianapolis*	L	0-2
Saint Joseph's**	L	0-4

*GLVC Games; +Indiana Wesleyan Tour.;
**GLVC Tournament

1997 (13-6-0, 5-4-0 GLVC)

MCKENDREE	W	5-0
NORTHERN KENTUCKY	W	2-0
CHRISTIAN BROTHER+	W	7-0
LINCOLN MEMORIAL+	W	2-0
HARRIS STOWE	W	2-0
LEWIS*	L	2-3
WISCONSIN-PARKSIDE*	L	1-2
Indianapolis*	W	3-1
Saint Joseph's*	L	0-1
Principia	W	4-0
Fontbonne	W	7-1
Quincy*	W	2-0
Truman State	L	0-1 (ot)
SIU-EDWARDSVILLE*	L	0-4
MISSOURI-ST. LOUIS*	W	2-0
Kentucky Wesleyan*	W	6-0
Bellarmino*	W	4-1
Wisconsin-Parkside**	W	3-0
Saint Joseph's**	L	1-3

*GLVC Games; +USI Tournament; ** GLVC Tournament

1998 (18-3-1, 9-1-0 GLVC)

Central Regional Champions		
McKendree	W	5-0
PRINCIPIA	W	3-0
GARDNER WEBB+	W	6-1
BELMONT ABBEY+	W	2-1 (ot)
TRUMAN STATE=	T	0-0 (ot)
MISSOURI-ROLLA=	W	3-2
Lewis*	W	5-0
Wisconsin-Parkside*	W	4-0
INDIANAPOLIS*	W	2-1
ST. JOSEPH'S*	W	5-1
Northern Kentucky*	W	1-0

Quincy*	W	3-0
SIU-Edwardsville*	L	1-2
MISSOURI-ST. LOUIS*	W	2-0
BELLARMINE*	W	4-0
KENTUCKY WESLEYAN*	W	3-0
TRANSLYVANIA	W	1-0
MISSOURI-ST. LOUIS#	W	3-1
St. Joseph's#	W	3-0
Northern Kentucky#	L	0-2
SIU-Edwardsville!	W	2-1 (2ot)
ASHLAND!	L	0-1 (3ot)

*GLVC Games; +USI Tournament;
=USI Classic; #GLVC Tournament;
!NCAA Tournament

1999 (10-7-1, 8-2-0 GLVC)

vs. Presbyterian<	L	0-1
Belmont Abbey<	L	1-2
Kentucky Wesleyan*	W	3-0
Bellarmino*	W	6-0
MISSOURI-ST. LOUIS*	W	4-0
SIU EDWARDSVILLE*	L	0-1
Quincy*	W	1-0
Truman State	L	0-1
NORTHERN KENTUCKY*	W	2-0
IPFW (@USI)*	W	11-0
Saint Joseph's*	L	1-2 (ot)
Indianapolis*	W	2-1
WISCONSINS-PARKSIDE*	W	1-0
LEWIS*	T	0-0 (ot)
Transylvania	L	0-1
MINNESOTA STATE	W	3-1
WISCONSIN-PARKSIDE>	W	2-0
vs. Northern Kentucky>	L	0-2

*GLVC Game; <Belmont Abbey Tournament;
>GLVC Tournament (semi-finals at SIUE)

2000 (13-5-1, 8-2-1 GLVC)

Missouri-Rolla	W	1-0
Evergreen State+	W	2-0
Pacific Lutheran+	W	1-0
Southern Oregon+	L	0-1
@ Hawaii Pacific+	W	1-0
KENTUCKY WESLEYAN*	W	2-0
BELLARMINE*	W	1-0
Lewis*	W	1-0
IUPUI-FT. WAYNE*	W	3-0
SAINT JOSEPH'S*	W	3-0
Northern Kentucky*	L	0-2
Indianapolis*	W	1-0 (ot)
QUINCY*	W	4-1
TRUMAN STATE	L	0-2
Missouri-St. Louis*	L	0-1
SIU Edwardsville*	T	2-2 (ot)
MCKENDREE	W	2-1
vs. Wisconsin-Parkside*\$	W	3-1
INDIANAPOLIS>	L	1-2

*GLVC Game; +Hawaii Pacific Tournament;
\$at St. Joseph's; >GLVC Tournament





USI Year-by-Year

2001 (4-12-0, 2-7-0 GLVC)

NORTHERN MICHIGAN	L	1-2
SIU EDWARDSVILLE	L	0-2
BRESCIA	W	7-0
vs. St. Cloud State<	L	0-2
Minnesota State<	L	1-4
Indianapolis*	L	0-2
Saint Joseph's*	L	1-2
WISCONSIN-PARKSIDE*	L	0-2
LEWIS*	W	1-0
OAKLAND CITY	W	13-2
SIU Edwardsville*	L	1-2 (2ot)
Quincy*	L	2-3
MISSOURI-ST. LOUIS*	L	0-1
BELLARMINE*	W	1-0
NORTHERN KENTUCKY*	L	0-3
McKendree	L	0-4

*GLVC; < MSU Tournament

2002 (8-10-0, 3-7-0 GLVC)

MONTEVALLO	W	3-2
vs. Hillsdale=	W	4-3
vs. Grand Valley State=	W	1-0 (ot)
MISSOURI BAPTIST	W	1-0
vs. Mercyhurst+	L	0-4
vs. Wheeling Jesuit+	L	1-3
at Northern Kentucky	L	1-3
SAINT JOSEPH'S	W	3-0
at Bellarmine*	L	0-1
KENTUCKY WESLEYAN*	W	3-0
MISSOURI-ST. LOUIS*	L	0-2
QUINCY	L	0-1
BRESCIA	W	4-0
SIU EDWARDSVILLE	L	1-3
Lewis	W	2-1
Wisconsin-Parkside	L	0-2
INDIANAPOLIS	L	2-3
MCKENDREE	L	1-4
=Indianapolis Tournament I;		
+Indianapolis Tournament II		

2003 (6-9-1, 3-7-0 GLVC)

Wheeling Jesuit	W	3-2
vs. Davis & Elkins	W	4-0
NORTHERN MICHIGAN	L	0-1 (ot)
Missouri Baptist	W	5-4
Christian Brothers	L	0-8
WISCONSIN-PARKSIDE*	L	0-3
LEWIS*	W	2-1 (2 ot)
Indianapolis*	L	3-5
Saint Joseph's*	L	1-3
BELLARMINE*	L	0-1
NORTHERN KENTUCKY*	L	1-2
WEST VIRGINIA WESLEYAN	T	2-2 (2 ot)
Kentucky Wesleyan*	W	3-0
SIU Edwardsville*	W	2-1 (2 ot)
Quincy*	L	1-2 (2 ot)
MISSOURI-ST. LOUIS*	L	0-1

2004 (6-12-0, 3-7-0 GLVC)

vs. Ferris State<	L	1-2
at Grand Valley State	L	0-4
Wheeling Jesuit	L	2-3 (2 ot)
Tiffin	W	1-0 (2 ot)
at McKendree	L	1-2
at Missouri Baptist	L	2-3
Quincy*	L	0-2
SIU Edwardsville*	L	1-2
Kentucky Wesleyan*	W	3-0
Findlay	W	1-0
at Northern Kentucky*	L	0-7
at Bellarmine*	W	1-0
Saint Joseph's*	L	1-2
Indianapolis*	W	2-1
at Lewis*	L	2-3
at Wisconsin-Parkside*	L	0-3
at Missouri-St. Louis*	L	2-4
at Oakland City	W	3-0
*GLVC; < at Grand Valley State University		

2005 (9-8-2, 8-5-0 GLVC)

vs. Ferris State<	W	2-1
at Grand Valley State<	L	0-5
Ashland	L	0-3
at Bellarmine*	L	1-3
at Northern Kentucky*	L	0-3
Missouri-Rolla*	W	6-0
Missouri-St. Louis*	W	1-0
at Quincy*	W	4-1
at SIU Edwardsville*	L	0-4
at Kentucky Wesleyan	W	3-0
Indianapolis	W	1-0
Saint Joseph's	W	3-0
at Tiffin	T	3-3 (2 ot)
at Findlay	T	2-2 (2 ot)
at Rockhurst*	L	1-3
at Drury*	L	1-3
Wisconsin-Parkside*	W	3-2
Lewis*	W	2-1
at Rockhurst+	L	0-1
*GLVC; <at Grand Valley State University;		
+GLVC Tournament		

2006 (4-13-0, 2-11-0 GLVC)

vs. Ferris State<	L	2-3
at Grand Valley State<	L	0-8
at Lewis*	W	1-0
at Wisconsin-Parkside*	L	0-2
Drury*	L	0-1 (ot)
Rockhurst*	L	1-2
McKendree	W	2-0
Findlay	W	3-1
at Saint Joseph's*	L	1-2
at Indianapolis*	L	0-1
Kentucky Wesleyan*	W	3-0
SIU Edwardsville*	L	1-3
Quincy*	L	0-1
at Missouri-St. Louis*	L	0-2



USI Year-by-Year



at Missouri-Rolla* L 1-2 (ot)
 Northern Kentucky* L 0-1
 Bellarmine* L 0-2
 *GLVC; <at Grand Valley State University

2007 (7-10-1, 5-7-1 GLVC)

at Saginaw Valley State L 1-6
 at Western Illinois L 1-2
 at Quincy* L 0-1
 at SIU Edwardsville* L 0-1
 SAINT JOSEPH'S* T 1-1 (ot2)
 INDIANAPOLIS* W 2-1
 NORTH ALABAMA W 4-3
 #1 GRAND VALLEY STATE L 0-9
 TIFFIN W 2-1
 at Drury* L 0-1
 at Rockhurst* L 0-2
 at Kentucky Wesleyan* W 4-1
 WISCONSIN-PARKSIDE* W 2-0
 LEWIS* W 4-1
 at Northern Kentucky* L 0-2
 at Bellarmine L 2-3 (ot)
 MISSOURI-ST. LOUIS L 0-2
 MISSOURI-ROLLA W 3-1

*GLVC

2008 (5-11-1, 5-7-1 GLVC)

vs. Ferris State@ L 0-1
 at #3 Grand Valley State L 0-5
 URBANA W 4-0
 OAKLAND CITY W 7-0
 at Missouri S&T* L 1-2
 at Drury* L 0-2
 ROCKHURST* L 1-2
 MISSOURI-ST. LOUIS* L 0-3
 at North Alabama W 1-0
 KENTUCKY WESLEYAN* W 3-1
 QUINCY* L 1-2 (ot)
 at Bellarmine* L 1-2 (2ot)
 at #24 Northern Kentucky* L 2-3
 INDIANAPOLIS* L 0-3
 SAINT JOSEPH'S* T 1-1 (2ot)
 at #10 Wisconsin-Parkside* L 0-5
 at Lewis* W 1-0
 *GLVC; @ at Grand Valley State University

2009 (9-8-3, 7-5-1 GLVC)

Western Kentucky L 2-3
 Bethel W 4-3
 NORTHERN KENTUCKY* W 1-0
 WESTERN ILLINOIS L 0-2
 INDIANAPOLIS* L 1-2
 SAINT JOSEPH'S* W 4-0
 NORTH ALABAMA T 2-2 (2ot)
 Wisconsin-Parkside* T 1-1 (2ot)
 Lewis* W 1-0
 ILLINOIS-SPRINGFIELD* W 4-0
 QUINCY* L 0-2

Rockhurst* L 2-3
 Drury* L 0-3
 MISSOURI S&T W 1-0
 Maryville L 0-4
 Missouri-St. Louis W 1-0
 Urbana W 1-0
 Kentucky Wesleyan* W 2-1
 Bellarmine* T 1-1 (2ot)
 Quincy > L 0-1
 *GLVC; >GLVC Tournaemnt





USI Campus



Strassweg Field

We Pledge...



We have joined institutions across 22 conferences and independents in committing to safe, fun, and entertaining sporting experiences on Division II campuses. We have signed the pledge to create and continue family-friendly experiences for everyone.



DIVISION II GAME ENVIRONMENT PLEDGE

NCAA Division II presidents and chancellors affirm that athletics events should reflect the values of higher education and the mission of each institution. Division II emphasizes learning and development in a personal setting. As chancellors and presidents, we are concerned about the uncivil behavior exhibited at college athletics contests and thereby pledge to work together to make respectful, family-friendly events a standard of the Division II experience.

Learn more at www.diicommunity.org

Evansville, Indiana

... A CITY with urban attractions and hometown friendliness



Situated on the banks of the Ohio River, Evansville is a mid-sized city that welcomes USI students and offers them plenty of things to do. Traveling Broadway shows, entertainers, and feature performances come to The Centre and the Victory Theatre. For a relaxing walk or invigorating run, the downtown riverfront features a greenway with a wonderful view of the changing river traffic and the Evansville skyline. Movie theatres (including an IMAX) and Swonder Ice Arena draw students together for fun, activity, and fellowship. Evansville's coffee shops, restaurants, and shopping areas also are places where students like to spend time. Less than three miles from campus, shopping centers and restaurants are plentiful on both sides of the Lloyd Expressway. The Eastland Mall area on Green River Road and the commercial centers off Burkhardt Road offer more restaurants and terrific shopping. USI's suburban location in western Vanderburgh County is just minutes away from all that Evansville has to offer.

www.evansvillecvb.org

Evansville FAST FACTS

- Indiana's third-largest city
(population of 126,000 persons and a metropolitan area of 300,000 residents)
- Evansville Museum of Arts, History and Science
- An activity-filled riverfront that includes Casino Aztar and the LST 325, a World War II ship
- Mesker Park Zoo
- Evansville Philharmonic Orchestra
- Evansville Otters (Frontier League baseball team)
- Westside Nut Club Fall Festival
- Entertainment venues: Roberts Stadium, Victory Theatre, and The Centre
- Hundreds of restaurants



University of Southern Indiana

