



1991 • SOCCER

The Tradition Continues

USI upsets Lewis to win GLVC title

ROMEDEVILLE, Ill. — Don Rumppler scored one goal and assisted on another to lift the University of Southern Indiana to a 2-1 victory over No. 11 Lewis in the championship match of the Great Lakes Valley Conference soccer tournament Sunday.

"At this stage, we felt that we were very capable of beating teams like Lewis who were nationally ranked," said USI coach Tony Colavecchia, who was named GLVC Coach of the Year.

"I always felt it was within our capabilities."

In the past, Colavecchia said his players tended to freeze in big game situations.

"They became very emotional and didn't really play tactically and weren't really playing very smart. Today they panicked."

Colavecchia said USI's adjustments and never panicked defense was the key to the match.

"And we scored goals when we needed it," he said. "I give the credit to our players. We've come a long way in 3 1/2 months. We made very progressive steps on and off the field. The Eagles Darren Wolf scored the first goal of the match with an assist from Rumppler. Rumppler scored with 12 minutes remaining to increase USI's lead to 2-0."

Colavecchia was surprised to be named coach of the year.

"To be honest, it was very unexpected," he said. "After the game, Alex Hernandez, the Lewis coach, said, 'Well done. I think you deserve coach of the year.' I was really flattered to hear that comment from him."

"They've been in the top 20 most of the year. I expected Alex to gain that accolade. He was equally deserving of it."

The loss may have damaged Lewis' hopes of gaining an bid to the NCAA Division II Tournament. But it is still highly unlikely that the Eagles (14-6) will get a bid. Five of their six losses were against Central Region opponents.

"Because of that factor alone, there is no way we'll get a national bid," Colavecchia said.

The GLVC champion does not get an automatic bid. USI lost to Lewis 2-1 in overtime during the regular season.

Colavecchia said Lewis, which has a 16-6 record, is not good enough to get a national bid.

"I'm not being derogating, but they are a mediocre Division II team that is tactically very sound," he said. "They are a borderline top 20 team."

He thinks Missouri-St. Louis, Gannon and Oakland will be the Central Region teams who gain bids.

"On the strength of schedule, they are the likely candidates," he said.

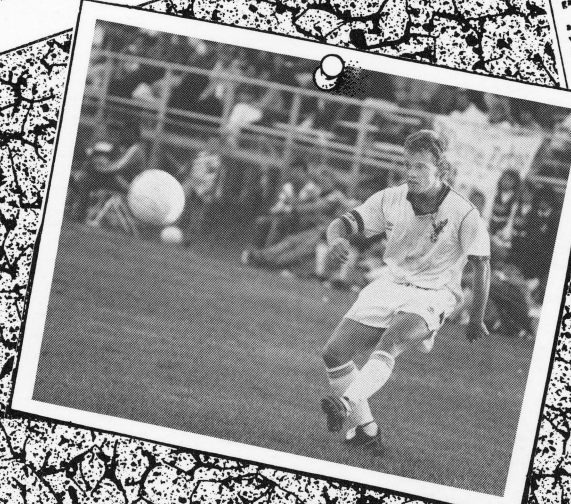
Colavecchia was pleased with the progress the Eagles made in his first season.

"We achieved our No. 1 goal — winning the GLVC title," he said. "I always knew we were capable of doing that and we succeeded."

"Looking ahead, we'll set our sights on bigger accomplishments, which is obviously a top 20 ranking and an NCAA bid. We'll take it one step at a time."

Can these goals be realistic?

"I would like to think so," he said. "The players and myself set realistic goals. It's not outside our limitations. We're very capable of reaching those goals."



Old National Bank presents a crash course in surviving college crises!

Old National's College Survival Kit has the answers for solving the money crises you'll face in college. With free checking and other benefits, it makes paying for anything from books to burgers a real breeze.

You see, it's the complete financial package put together specifically for the college crowd.



CRISIS #1

A little cash, lots of books

It lets you write unlimited checks with no minimum balance. The first 50 checks are free. And overdraft protection* can be included — so a mistake won't cost you embarrassment or a fee.

You get a free MoneyMover card for quick access to cash anytime. Almost anywhere. On campus

CRISIS #2



When the dinner date gets expensive



CRISIS #3 Last-minute party clothes

or off. And there's a Visa or MasterCard with your name on it, and a \$500 credit line* to boot.

So make it easy on yourself. Apply for Collegiate Checking at any Old National Bank office today. And pass your crash course in surviving a college crisis.



CRISIS #4

Quick cash late at night

*Subject to credit approval. Additionally, for the \$500 credit line, Freshmen and Sophomores need a co-signer, while Juniors and Seniors with a 3.0 or above G.P.A. from a four-year accredited college do not.

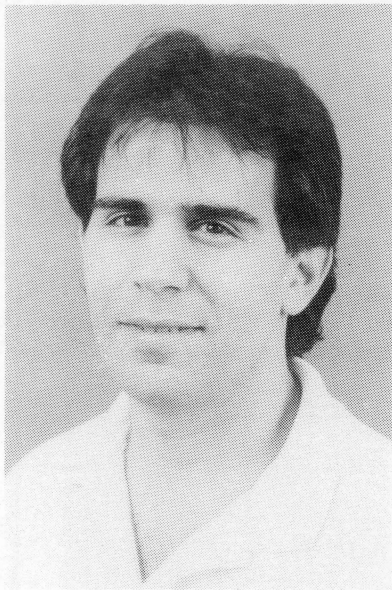
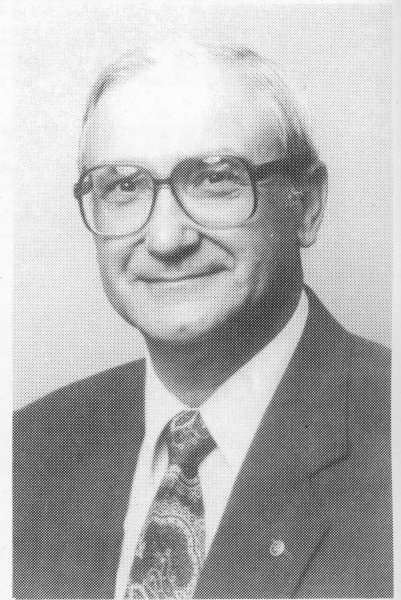
YOUR BANK FOR LIFE



OLD NATIONAL BANK

MEMBER OLD NATIONAL BANCORP

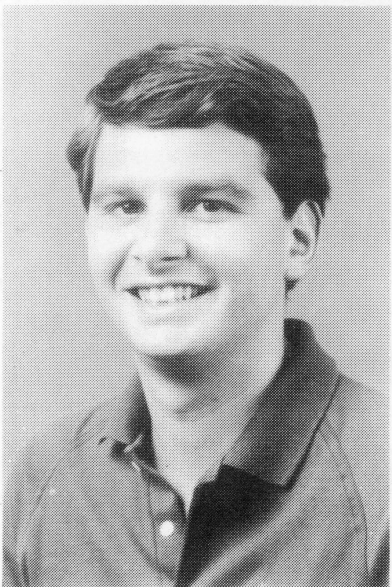
Member FDIC



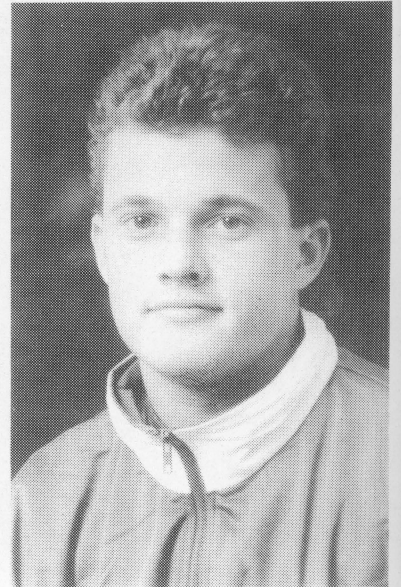
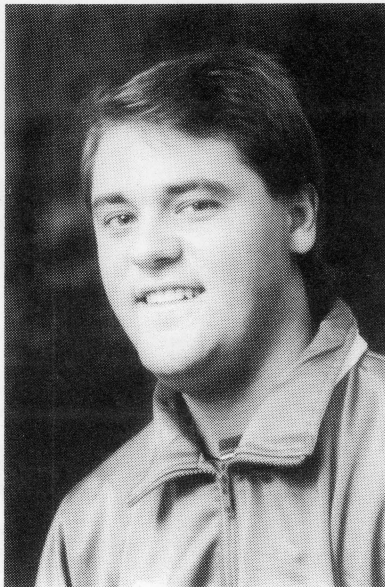
Top Row L-R
Dr. Donald Bennett
 Director of Athletics
Jim Brown
 Academic Advisor
Dr. Charles Bertram
 Faculty Representative



Middle Row L-R
Chris Diaz
 Student Trainer
Lois Stevens
 Equipment Manager



Bottom Row L-R
Ray Simmons
 Sports Information Director
Brent Churchill
 Student Assistant Coach
Chris King
 Student Assistant Coach



HEAD COACH TONY COLAVECCHIA

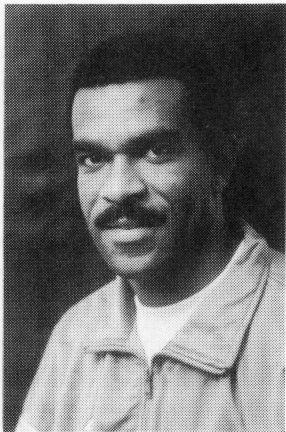
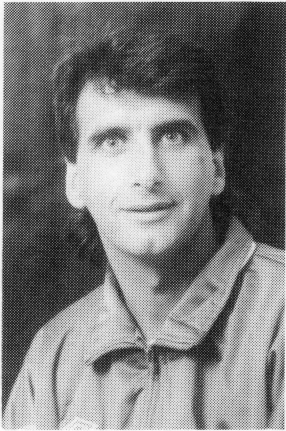
Starting his fourth season, Head Coach Tony Colavecchia has brought a new enthusiasm to the USI soccer program. In three years, he has compiled a 44-19-3 record, been named Great Lakes Valley Conference Coach-of-the-Year three times, named the Met-Life 1989 Great Lakes Regional Coach-of-the-Year, and led the team to three straight GLVC titles.

Colavecchia came to USI after a four-year association with the University of Evansville. The Skegness, England, native was the director of athletics at UE's British campus, Harlaxton College. After two years, Colavecchia was transferred to Evansville where he served as an assistant coach to UE Head Coach Fred Schmalz. Colavecchia

credits Schmalz with influencing his career. He feels that coaching at UE helped him gain the confidence to direct the USI program.

The 31-year old coach holds a F.A. coaching license and a United States Soccer Federation B License. He has served as an instructor of the U.S.S.F. Region II Olympic Development camps, and is recognized as an Indiana State Coach for both boys and girls.

Colavecchia played professionally and as a collegiate midfielder in England. He graduated from St. Paul's College, Cheltenham, England, in 1980 with a degree in physical education.



ASSISTANT COACH MOULTON CATO

Former USI player Moulton Cato is entering his third season on the USI staff. He also has played for the CONCACAF and Canadian National Team.

Cato was born in St. Vincent, West Indies, and raised in Birmingham, England, where he developed as a player. A team captain, for three years, he was on the 1982 NCAA playoff team. He graduated in 1985 with a degree in communications from USI and earned his master's degree

at Western Kentucky University while serving as an assistant coach.

During Cato's playing days at USI, he was an honorable mention All-American and was selected as both an All-Region and All-GLVC player.

Cato coordinates the team fitness program and assists in monitoring the players' academic progress.

1991 UNIVERSITY OF SOUTHERN INDIANA SOCCER OUTLOOK

The University of Southern Indiana Screaming Eagles soccer team has a new look, but hopes to combine with the winning traditions of the 1980s.

In that decade, the Eagles had ten-plus wins in a season and won the Great Lakes Valley Conference title seven times. Last season, the Eagles were 15-5-2 overall, 7-0 in the GLVC, won their third consecutive GLVC title (becoming the only GLVC team to go undefeated in the conference), and ended the year ranked 19th nationally.

Head Coach Tony Colavecchia must now attempt to meet the challenge of replacing six senior starters and one top reserve. Gone are starting backs Robert Bennett, Scott Hehr, and Chris King; midfielders Ron Sweeney and Joe Lattner; goalkeeper Matt Blauvelt; and top reserve and underclassman Vincent Houben, who transferred to Georgia State University.

The most difficult team members to replace will be King and Blauvelt. King, who gave speed to the USI backfield, played in 84 of a possible 86 games at USI and averaged seven goals and eight assists a year. Blauvelt holds the goalkeeping records of most shutouts in a season (10 in 1990) and in a career (28) and the lowest goal against average (GAA) for a season (0.70 in 1990).

Although the Eagles lost some great players, they do not need to totally rebuild the team. The team returns 13 players (eight letterwinners) from last season's team including the team's most valuable player Dean Doughty, a 6-0 sophomore back, GLVC Player-of-the-Year Shane Gibson, a 6-2 junior forward, and two time All-Central Region and All-GLVC performer Travis Marx, a 5-11 junior midfielder/forward.

The Eagles, a team with nine players from Evansville and 13 players from Indiana, also return All-GLVC player in 1988 and 1990 Eric Schoenstein, a 5-11 senior forward, and 1989 All-GLVC player Brad Schultheis, a 5-11 junior back.

THE GOALKEEPERS

With the departure of Blauvelt, the Eagles will protect the goal and fill the void with one returning player and two transfers.

Returning from last year is 5-11 sophomore Larry Nohalty. Nohalty had a 1.48 GAA in seven games, and combined with Blauvelt in two shutouts.

Transferring to USI from the junior college ranks is Jim Dionne, a 5-11 junior from College of Lake County near Chicago, Ill. Dionne, who is a very vocal goalkeeper, was an All-American at CLC and was the goalkeeper for the Illinois Select Men's team this spring.

DEFENSE

When the defense loses three starters, most teams face a major rebuilding effort. In the Eagle's case, the coach has only to look to the bench.

The one remaining starter is MVP Doughty, who became a highly visible leader during the spring. Last season, Doughty played and started in 20 games and had five goals to his credit from the back position.

Returning backs who will challenge for the other two starting spots will be Schultheis, who had one goal and two assists in 17 games, Mark Schlachter, a 6-0 sophomore who played in 16 games last season, and Brad Smith, a 5-6 sophomore who played in 12 games and had one goal and one assist.

MIDFIELD

This year's Eagle squad will enjoy the luxury of having great depth at the midfield position.

Leading the way is Marx, a two-time All-Region player. Last season, he effectively made the transfer from a forward to a midfielder. A walk-on as a freshman, he had 19 points on six goals and seven assists last year.

Playing next to Marx at midfield is 5-8 sophomore John Hamilton. After adjusting to the climate, culture, and soccer style, the native of England came on to finish strong, playing and starting in 21 games and scoring seven points on two goals and three assists.

Also returning at midfield is Wes Wilhite, a 6-0 sophomore midfielder/back who after a slow start, came on strong at the end of the season. Wilhite, while splitting time between the midfield and back positions, is expected to fill positions in the middle of the field held last year by Lattner and Sweeney. Last year he had nine points on three goals and three assists.

FORWARD

In 1990, the Eagles broke a school record for team goals in a season with 71 and outscored their GLVC opponents, 52-1.

Leading the forwards is Gibson, who had 45 points (ranked 10th nationally and first in the GLVC) on 17 goals (ranked 10th nationally and first in the GLVC) and 11 assists.

Joining Gibson, who also was named to the All-Central Region team, is the team second leading scorer and only senior, Schoenstein. Scoring 24 points last season on eight goals and eight assists, Schoenstein has averaged 8.5 goals and 6.3 assists a year.

The offense could receive a shot in the arm from newcomer Justin Iglehart, a 5-11 freshman. Iglehart, who was redshirted last season, was the Evansville area's top goal scorer in 1988 as a high school junior and second as a senior in 1989.



Back row (left to right): Brent Churchill—Student Assistant Coach, Moulton Cato—Assistant Coach, John Hamilton, Craig Austell, Keith Barnett, Larry Nohalty, Chad Harmon, Jim Dionne, Wes Wilhite, Shane Gibson, Melvin Seitz, Greg Titus, Ron Sweeny—Student Assistant, Chris King—Student Assistant
 Front row (left to right): Justin Inglehart, Brad Schultheis, Mike Wagner, John-Micheal Woodward, Brandon Kitchens, Tony Colavecchia—Head Coach, Dean Doughty, Travis Marx, Sean Helliwell, Mark Schlachter, Eric Schoenstein.

UNIVERSITY OF SOUTHERN INDIANA
 1991 SCREAMING EAGLES

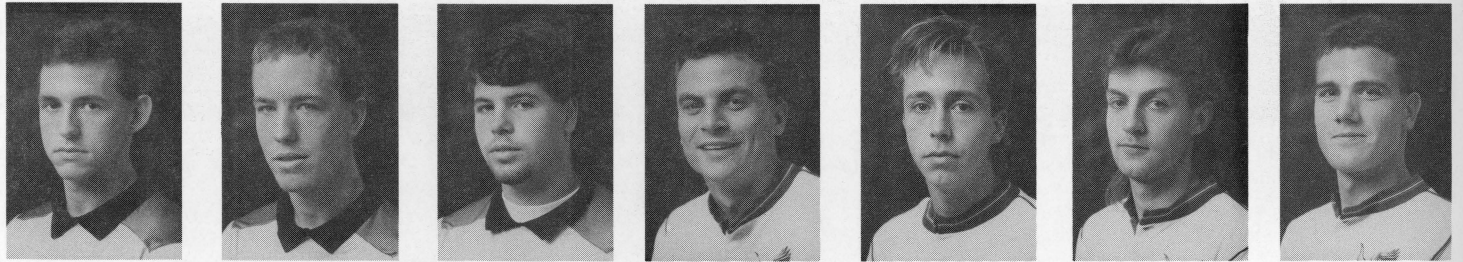
SOCCKER ROSTER

NO.	PLAYER	POS.	HT.	WGT.	CL.	HOMETOWN
GK	James Dionne	GK	5-10	170	Jr.	Waukegan, Ill.
GK	Larry Nohalty	GK	5-11	170	So.	Jeffersonville, Ind.
GK	Chad Harmon	GK	6-2	178	Fr.	Newburgh, Ind.
2	Wes Wilhite	B/M	6-0	170	So.	Evansville, Ind.
3	John Woodward	B	5-7	151	Fr.	Henderson, Ky.
4	Dean Doughty	B	6-0	165	So.	Ontario, Canada
5	Mark Schlachter	B	6-0	160	So.	Evansville, Ind.
6	John Hamilton	M	5-8	166	So.	Skegness, England
7	Sean Helliwell	M	5-10	160	So.	Huddersfield, England
8	Justin Iglehart	F	5-11	165	Fr.	Evansville, Ind.
9	Shane Gibson	B	6-2	190	Jr.	Chesterfield, England
10	Travis Marx	M	5-11	160	Jr.	Evansville, Ind.
11	Eric Schoenstein	F	5-11	150	Sr.	Evansville, Ind.
13	Brandon Kitchens	B	5-6	150	Fr.	Evansville, Ind.
15	Brad Schultheis	B	5-10	175	Jr.	Evansville, Ind.
16	Greg Titus	M	5-10	165	So.	Evansville, Ind.
18	Craig Austell	F	6-1	180	Fr.	Panama City, Fla.
19	Melvin Seitz	F	6-0	165	So.	Avon, Ind.
22	Keith Barnett	B	6-0	175	Fr.	Evansville, Ind.



Head Coach: Tony Colavecchia
 Assistant Coach: Moulton Cato
 Student Assistant Coaches: Brent Churchill, Chris King

MEET THE SCREAMING EAGLES



JIM DIONNE

GK

Goalkeeper 5-10 70 Junior Waukegan, Ill. A transfer to USI from College of Lake County, where he won two letters in soccer...was named to the Junior College All-American team, the Region A Player-of-the-Year, team Most Valuable Player at CLC last year...Illinois Men's Select Team goalkeeper this past spring...attended Waukegan East High School where he won letters in soccer and volleyball...majoring in physical education.

Coach's Comment: "An experienced goalkeeper who should have an immediate impact on and off the field, Dionne is fundamentally good and vocal on the field."

CHAD HARMON

GK

Goalkeeper 6-2 178 Freshman Evansville, Ind. Comes to USI from Castle High School in Evansville...had a 0.67 goals against average and named honorable mention All-City and the Most Valuable Player at CHS as a senior...majoring in marketing.

Coach's Comment: "Harmon is a former F.C. Spirit player, who lacks experience but has the potential to be a confident under-study for the starting goalkeeper."

LARRY NOHALTY

GK

Goalkeeper 5-11 170 Sophomore Jeffersonville, Ind. Saw limited action last season in seven games, started three, as the number two goalkeeper behind Matt Blauvelt...had a 1.48 goals against average and combined with Blauvelt on two shutouts...had a 32-9 record with a 0.72 GAA and 23 shutouts at Holy Cross High School in Jeffersonville...majoring in business administration.

Coach's Comment: "Nohalty is the only returning goalkeeper. He is a raw talent, who has made giant strides in the past year. His continued improvement may help to develop a strong pool of goalkeepers."

WES WILHITE

2

Back 6-0 170 Sophomore Evansville, Ind. Played in 17 games, starting six, and scored nine points on three goals and three assists last season...was a member of the Pizza Hut U14, U16, and U19 soccer programs which won state championships...was a member of the Indiana State Development teams in '85 and '86...majoring in communications.

Coach's Comment: "WilHITE has been gaining confidence during the spring due to participation in a weight training program and has achieved more self-confidence enhancing his play on the field."

	G/GS	G	A	PTS.
1990	17/6	3	3	6

JOHN MICHAEL WOODWARD

3

Back 5-7 151 Freshman Henderson, Ky. A transfer to USI from the University of Akron where he was a redshirt last season...was named to the Spring 1991 Dean's List at Akron...played for Henderson County High School, won four letters, was named All-State, All-Region, Regional Defensive Most Valuable Player, All-District, and District Most Valuable Player as a senior...also was Academic All-State (Ky.) in high school...won the NASA Award at the Tri-State Annual Science Fair while at HCHS...majoring in biology/pre-medicine.

Coach's Comment: A product of the F.C. Spirit soccer program and a transfer from Akron University, he possesses tremendous athletic ability and hopefully combine ability with tactical sense.

DEAN DOUGHTY

4

Back 6-0 165 Sophomore Ontario, Canada Was the Most Valuable Player for the USI squad last season...played and started in 20 games last year and had 10 points on five goals from the back sweeper position...major is biology.

Coach's Comment: "Doughty is a hard-nosed defender who established himself as a sweeper during the spring. This fall he will operate in the heart of the USI defense."

	G/GS	G	A	PTS.
1990	20/20	5	0	10

MARK SCHLACHTER

5

Back 6-0 160 Sophomore Evansville, Ind. Started off slowly last season, but matured as last season progressed, playing in 16 games, starting five...was a member of the Memorial High School teams that won state championships in 1989 and 1990...majoring in business.

Coach's Comment: "A much improved spring performance, Schlachter will be in a strong position to contend for a starting position in the backfield."

	G/GS	G	A	PTS.
1990	16/5	0	1	1

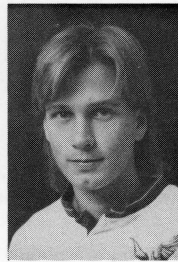
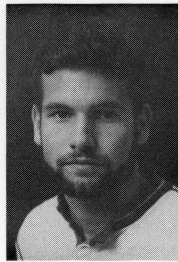
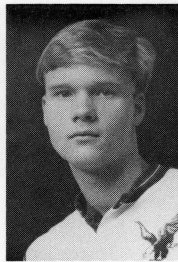
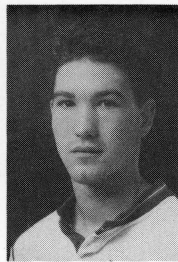
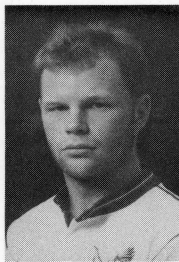
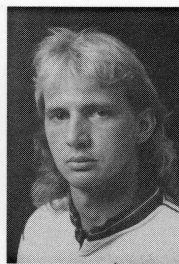
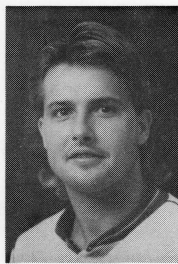
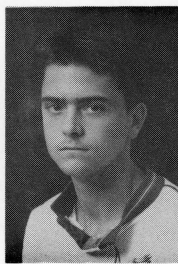
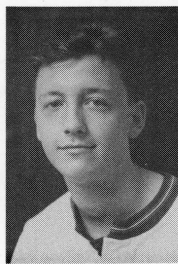
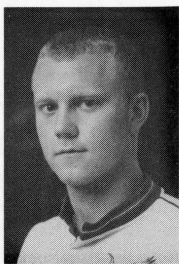
JOHN HAMILTON

6

Midfielder 5-8 166 Sophomore Skegness, England Started 21 games last season for the Eagles, missed one due to injury...scored seven points on two goals and three assists as a freshman...was involved in county soccer with Lincolnshire, England Trail list and briefly with Norwich City...majoring in physical education.

Coach's Comment: "Hamilton finally settled down and made the cultural adjustments. He was FC Spirit U19 captain in the summer and has adjusted to the American style of the game.

	G/GS	G	A	PTS.
1990	21/21	2	3	7



SEAN HELLIWELL

7

Midfielder5-10160SophomoreHuddersfield, England
A transfer to USI from Liberty University, where he started in all 16 games and had eight points on four goals...while in England he was the captain of the West Yorkshire school's U19 team and the Huddersfield Technical College captain...majoring in physical education.

Coach's Comment: "A strong academic student, who will be an inspirational player on the new USI team."

JUSTIN IGLEHEART

8

Forward5-11165FreshmanEvansville, Ind.
A redshirt last season, he is a local product from Reitz High School...was All-City, All-State, and State Finals All-Tournament in 1989...was North-South All-Star game Most Valuable Player in 1989 and was top high school goal scorer in Evansville in 1988 and was second in 1989...majoring in physical education.

Coach's Comment: "Begins as a freshman after being redshirted last season. A goal scorer by nature, he will add punch to the forward line."

SHANE GIBSON

9

Back/Forward6-2185JuniorChesterfield, England
Named the GLVC Player-of-the-Year in 1990 and ranked tenth in the nation in scoring with 45 points on 17 goals and 11 assists...also named to the All-Central Region and All-GLVC teams...as a freshman, he was hampered mid-way through the season with an ankle injury, started and played in 16 games and had 12 points on four goals and four assists...leading scorer for the Chesterfield team which reached the United Kingdom National Finals...majoring in physical education.

Coach's Comment: "Gibson was ranked 10th in goal scoring last year. This year as a junior, he will be expected to lead the attack. He will receive the respect of the opposition and be a heavily marked player."

	G/GS	G	A	PTS.
1989	16/16	4	4	12
1990	21/20	17	11	45
TOT.	37/36	21	15	57

TRAVIS MARX

10

Forward5-11160JuniorEvansville, Ind.
Named to the All-Central Region and All-GLVC for the second straight year...third on the team in scoring with 19 points on six goals and seven assists...a walk-on player as a freshman, started 19 games, played in all 24 and was the team's second leading scorer with 22 points on six goals and ten assists, which ranked tenth in the nation...first team All-State in 1988...majoring in mechanical engineering.

Coach's Comment: "A two-time All-Region selection, Marx will operate in a much wider position and his role will include more defending responsibilities along with his noted attacking role."

	G/GS	G	A	PTS.
1989	24/19	6	10	22
1990	22/22	6	7	19
TOT.	46/41	12	17	41

ERIC SCHOENSTEIN

11

Forward5-11150SeniorEvansville, Ind.
The team's only senior, was second in scoring with 24 points on eight goals and eight assists and was named to the All-GLVC team...led the team in goals scored with nine, but tied for third in scoring with 21 points in 1989...despite knee problems, he played in all 24 games and started 23...was All-GLVC and All-Region in 1988...majoring in secondary education.

Coach's Comment: "Schoenstein is the only senior on the USI soccer team and will be called upon to show some leadership qualities. His experience combined with his ability to attack from the midfield will be a big influence."

	G/GS	G	A	PTS.
1988	20/20	9	8	26
1989	24/23	9	3	21
1990	22/18	8	8	24
TOT.	66/61	26	19	71

BRANDON KITCHENS

13

Back5-6150FreshmanEvansville, Ind.
A local talent from Reitz High School...was All-City (unanimous choice) and All-State at RHS...participated in the Olympic Development Program and the Indiana State team for the past four years...majoring in business.

Coach's Comment: "A former player with the F.C. Spirit soccer program, he is versatile in the back or at the midfield and is a quick and tenacious player."

BRAD SCHULTHEIS

15

Back/Midfielder5-10175JuniorEvansville, Ind.
Played in 17 games last season starting six with four points on one goal and two assists...as a freshman he was named to the All-GLVC team, played in 22 games, starting 19 and scored eight points on three goals and two assists...majoring in business

Coach's Comment: "Schultheis will operate as an auxiliary back and he feels comfortable in this role. His experience will be a factor in the coming year."

	G/GS	G	A	PTS.
1989	22/19	3	2	8
1990	17/6	1	2	4
TOT.	39/25	4	4	12

GREG TITUS

16

Midfielder5-10165SophomoreEvansville, Ind.
Transfers to USI from Canisus College (N.Y.)...played locally for Central High School in Evansville and for the F.C. Spirit...was the Most Valuable Player in 1990 and was team captain for two years at CHS...majoring in math and physics.

Coach's Comment: "His strength is in the air and is a good header of the ball. He already has an established rapport with the returning players."

CRAIG AUSTELL

18

Forward 6-1 180 Freshman Panama City, Fla.
 Played for Mosley High School in Panama City, where he earned three letters in soccer..while at MHS, he was named All-County three times, All-District twice, and honorable mention All-State once..was the team Most Valuable Player in 1990 and 1991 and had a career total of 30 goals and 28 assists at MHS...major is undecided.

Coach's Comment: "Austell is a former Evansville resident who returns with ability and raw talent and should fit into the USI attacking style of play."

MELVIN SIETZ

19

Forward 6-0 165 Sophomore Avon, Ind.
 Won USI's Most Improved Player 1990...showed good quickness at the forward position and had one goal last season...major is undecided.

Coach's Comment: "Most improved player for the USI squad last season. He possesses, a unique style which presents problems to the opponent's defense."

	G/GS	G	A	PTS.
1990	6/0	1	0	2

KEITH BARNETT

22

Back 6-0 175 Freshman Newburgh, Ind.
 Played locally for Reitz High School..was a member of the state championship teams in 1989 and 1990..majoring in mechanical engineering technology.

Coach's Comment: "Strong and aggressive player in the air, Barnett has a lot of ability, and will need to develop his foot skills."



SOCCER TERMS

Chip—a high, soft kick taken to lift the ball over the heads of the opponents.

Corner Kick—a free kick from the corner of the playing field is awarded to the offensive team when the defensive team kicks the ball over the end line.

Center—to pass the ball from a wide position on the field into the penalty area.

Clear—a throw or kick by the goalkeeper or a kick by the defender in an attempt to get the ball away from the goal area.

Cross—the same type of pass as a center.

Defender or Back—primarily a defensive player who assists the goalkeeper in protecting the goal.

Dribble—a way of advancing the ball past defenders by a series of short taps with one or both feet.

Duration—the game is played in two halves of 45 minutes each, with the teams changing ends at halftime.

Forward or Striker—primarily an attacking player whose responsibility is to create and score goals.

Goal—a goal is scored when the whole of the ball has crossed the goal line under the crossbar and between the goal posts, provided that the attacking team has not infringed the laws.

Goalkeeper—the last line of defense. The only player who can use his hands within the field of play. He is limited to using his hands only within the penalty area.

Goal Kick—a free kick awarded to the defensive team when the offensive team kicks the ball over the end line.

Half-volley—kicking the ball just as it is rebounding off the ground.

Hands—illegal act of intentionally touching the ball with the hands or arms.

Heading—a method of scoring, passing, and controlling the ball by making contact with the head.

Lob—a high, soft kick taken on the volley, lifting the ball over the heads of the opponents.

Marking—guarding an opponent.

Midfielder—both an offensive and defensive player who is primarily responsible for linking the forwards and defenders.

Obstructing—preventing the opponent from going around a player by standing in his path.

Pitch—another name for the field of play.

Result—the team scoring the greater number of goals wins. If the number of goals scored is equal, the result is a draw.

Save—the goalkeeper stopping an attempted goal by catching or deflecting the ball away from the goal.

Sliding Tackle—attempting to take the ball away from the opponent by sliding on the ground.

Sweeper—a defender who roams either in front of or behind the defender line to pick up stray passes.

Trap—controlling a passed ball by means of the feet, thighs, chest, or head.

CUT, WAVE & SCREAM!



United *Automobile Leasing
Service, Inc.*

3700 MORGAN AVENUE · EVANSVILLE, INDIANA 47715

UNIVERSITY OF SOUTHERN INDIANA 1990 FINAL SOCCER STATISTICS

15-5-2 (GLVC 7-0-0)

GLVC CHAMPIONS (3rd Consecutive)

Regionally Ranked 6th

Nationally Ranked 19th

PLAYER	G/GS	SH	SOG	G	AST	PTS
Shane Gibson, F	21/20	91	58	17	11	45
Eric Schoenstein, F	22/18	56	37	8	8	24
Travis Marx, M/F	22/22	42	26	6	7	19
Chris King, M	21/21	29	18	7	3	17
Vincent Houben, M	18/6	26	12	4	3	11
Joe Lattner, M	20/16	40	20	5	5	13
Dean Doughty, U	20/20	12	10	5	0	10
Wes Wilhite, B	17/6	13	7	3	3	9
John Hamilton, M	21/21	31	21	2	3	7
Rob Bennett, B	20/20	4	2	2	1	5
Scott Hehr, B	22/20	18	7	1	3	5
Troy Pemberton, M	9/0	4	3	2	0	4
Brad Schulthies, B	17/6	5	3	1	2	4
Ron Sweeney, M/B	22/18	17	14	4	1	9
Brad Smith, B	12/1	4	1	1	1	3
Eric Moore, B	5/0	3	2	1	1	3
Ali Malaekah, F	4/0	2	1	1	0	2
Melvin Seitz, F	6/0	3	3	1	0	2
Mark Schlachter, B	16/5	0	0	0	1	1
Paul Gurgos, B	3/0	1	0	0	0	0
John Bordfeld, B	3/0	1	1	0	0	0
Michael Smith, B	1/0	0	0	0	0	0
Travis Kaiser, M	1/0	0	0	0	0	0
TEAM TOTALS:	22	402	246	%71	53	195
OPP TEAM TOTALS:	22	113	73	19	13	51

% School Record for a single season.

GOALKEEPING

PLAYER	G/GS	SOG	GOALS	SV	SO	MIN.	GA AVG.
Matt Blauvelt	19/19	56	12	37	0	1504	0.70
Larry Nohalty	7/3	16	7	9	0	425	1.48
Jim Morrow	3/0	1	0	1	0	81	0.00
USI TEAM TOTALS	22	73	19	47	**13	2010	0.85
OPP. TEAM TOTALS	22	246	71	139	6	2010	3.18

**Shared shutout by Blauvelt (73 minutes) and Morrow (17 minutes) vs. SJC
Shared shutout by Blauvelt (37 minutes), Nohalty (34 minutes), and
Morrow (19 minutes) vs. KWC

Shared Shutout by Blauvelt (45 minutes) and Nohalty (45 minutes)
vs. IPFW

Shared Shutout by Blauvelt (45 minutes) and Morrow (45 minutes) vs. UI
Blauvelt tied the Career Record for Shutouts (26) vs. IPFW 10-31-90

Blauvelt broke the Career Record for Shutouts (27) vs. SJC 11-3-90

The six shutouts between 10-3-90 (Bellarmine) to 10-27-90

(NEMO) is a school record.

1990 GREAT LAKES VALLEY CONFERENCE

SCORING

Player	School	GP	Goals	Assists	Total Points
1. Shane Gibson	USI	21	17	11	45
2. Dominic Latkovski	BC	20	14	10	38
3. Glen Johnson	SJC	20	10	5	25
5. Eric Schoenstein	USI	22	8	8	24
4. Henry Ahrens	SJC	23	9	5	23
6. Danny Butler	BC	16	7	6	20
Tim Lawson	NKU	15	8	4	20
Jeff Madiol	LU	17	6	8	20
9. Matt Wulkopf	BC	15	5	5	15

GOALKEEPING

Player	School	MP	GP	SH	SV	SO	GAA/ GOALS
1. Matt Blauvelt	USI	1504	19	56	37	10	0.70/12
2. Darren Kull	SJC	1400	20	119	94	4	1.09/17
3. Marshal Lonneman	NKU	1208	14	112	86	5.5	1.56/21
4. Joe Butera	LU	1480	17	207	93	4	1.82/30
5. Mark Benitez	BC	1215	13	145	82	2	1.85/25

*1990 FINAL GLVC STANDINGS

School	Overall Record	Pct.	GLVC Record	Pct.
Southern Indiana	15-5-2	.727	7-0-0	1.000
Northern Kentucky	9-9-1	.500	6-1-0	.857
St. Joseph's	14-8-2	.625	2-3-2	.429
Bellarmine	8-10-2	.450	3-4-0	.429
Lewis	8-8-1	.500	3-3-1	.500
Indianapolis	8-7-1	.531	3-3-1	.500
Kentucky Wesleyan	4-10-2	.294	1-5-1	.214
IPFW	1-15-2	.166	0-6-1	.071

GLVC TOURNAMENT GAME SCORES:

First Round: (# 1) USI-6 (# 7) IPFW-0 (at USI); (# 5) SJC-1 (# 4) Lewis-0
(at Lewis); (# 6) BC-2 (# 3) UI-0 (at Indianapolis); (# 2) NKU-3 (# 7)
KWC-2 OT (at Northern Kentucky)

FINAL FOUR AT THE UNIVERSITY OF SOUTHERN INDIANA

Semi-Finals: NKU-1 BC-0; USI-3 SJC-0

Finals (Championship Game): USI-6 NKU-0

Third Place: SJC-1 BC-0

University of Southern Indiana YEAR-BY-YEAR

1979 (6-6-1)

Grace College	W	2-0
Washington Univ. (Mo.)	L	0-2
at Louisville	W	1-0
Alabama-Huntsville	T	1-1
Purdue	W	1-0
JChicago-Circle	L	1-2
at Sangamon State	L	0-2
Bellarmino	W	2-0
at Wheaton College	W	2-0
at Missouri-St. Louis	L	0-1
at DePauw	W	1-0
at McKendree	L	0-5
at Wright State	L	0-1

1980 (11-7-2) GLVC CHAMPIONS

at Wisconsin-Parkside	L	1-2
at Wisconsin-Green Bay	W	1-0
Kentucky Wesleyan	W	5-1
North Texas State(EIU Tour.)	L	0-3
Lewis (EIU Tour.)	W	3-0
at Western Illinois	L	0-1
Oakland	T	0-0
DePauw	W	3-1
Marquette	W	* F
at Vanderbilt	W	1-0
at Washington	L	1-2
Wright State	W	1-0
Sangamon State	T	0-0
at Alabama A&M	L	0-4
at Alabama-Huntsville	L	0-2
McKendree	W	2-1
Indiana	L	0-1
St. Joseph's	W	10-0
Lewis	W	4-0
Bellarmino	W	3-1

1981 (8-9) GLVC CHAMPIONS

at Washington Univ. (Mo.)	L	0-1
Vanderbilt	L	0-2
Bellarmino	W	5-2
at Cleveland State	L	0-1
at Kentucky Wesleyan	L	1-2
Southeast Missouri (at UMSL)	W	2-0
at Missouri-St. Louis	L	0-1
at Indiana	L	1-7
Western Illinois	L	1-3
Eastern Illinois	L	0-1
Wisconsin-Parkside (at Lewis)	W	2-0
Oakland (at Lewis)	W	1-0
Quincy	L	0-4
at Wheaton	W	4-0
Bellarmino (at KWC)	W	3-1
at Kentucky Wesleyan	W	3-1
Lewis (at KWC)	W	1-0

1982 (11-3-2) GLVC CHAMPIONS

Harris Stowe	W	3-0
at Vanderbilt	W	2-0
Wisconsin-Parkside (at Oakland)	T	1-1
at Oakland	T	0-0
at Bellarmine	W	3-0
at Wright State	W	2-0
at Xavier	W	1-0
Indianapolis	W	14-0
at Missouri-Rolla	L	1-2
Southeast Missouri	W	3-0
Kentucky Wesleyan	W	3-2
Lewis	W	3-1
Georgia State	W	3-2
Purdue	W	3-0
at Eastern Illinois	L	1-4
Indiana	L	0-1

1983 (13-3) GLVC CHAMPIONS

Vanderbilt	W	4-0
at Harris Stowe	W	3-1
at Southeast Missouri	L	0-3
Bellarmino	W	7-0
at Georgia State	W	2-1
Emory (at GSU)	W	2-1
Wright State	W	3-1
at Indianapolis	W	7-0
Missouri-Rolla	W	3-0
at Lewis	W	2-0
at Purdue	W	4-0
at Eastern Illinois	L	1-2
Northeast Missouri	W	2-0
at Kentucky Wesleyan	W	1-0
Northern Kentucky	W	3-0
Oakland	L	1-3

1984 (12-5-2) GLVC CHAMPIONS

Loyola	W	5-0
IUPU Ft. Wayne	W	6-0
Kentucky Wesleyan	L	0-1
at Vanderbilt	W	1-0
at Bellarmine	L	2-3
Harris Stowe	W	3-0
at Wright State	T	1-1
at Northeast Missouri	W	2-0
at Missouri-Rolla	T	1-1
Southeast Missouri	W	2-0
Lewis	W	4-1
at Eastern Illinois	L	0-2
Western Kentucky	W	4-0
Transylvania	W	7-0
at Wisconsin-Parkside	L	1-3
at Oakland	L	1-4
Indianapolis	W	3-0
IUPU Ft. Wayne	W	2-1
Kentucky Wesleyan	W	2-1

1985 (10-9)

at North Carolina	L	0-5
at Greensboro	W	2-0
at Campbell	L	0-1
at Kentucky Wesleyan	L	1-2
Vanderbilt (OT)	L	1-2
at IUPU Ft. Wayne	W	7-4
Bellarmino	W	3-0
Wright State (OT)	L	2-3
at Western Kentucky	W	2-0
at Lewis	L	1-4
at Louisville	L	2-3
Missouri-Rolla	W	1-0
Eastern Illinois	L	1-2
at Southeast Missouri	W	3-2
Oakland	L	0-4
at Transylvania	W	5-0
Northern Kentucky	W	2-0
Northern Kentucky	W	2-1
IUPU Ft. Wayne (at KWC)	W	2-1
Lewis (at KWC)	L	0-1

1986 (9-7-4)

at Missouri-Rolla (OT)	W	3-1
at Lindenwood	W	4-0
Kentucky Wesleyan	W	7-0
at Vanderbilt	W	7-3
Harris Stowe	W	5-0
IUPU Ft. Wayne	T	1-1
Davis & Elkins	L	0-4
Louisville	T	0-0
Lewis (OT)	L	2-3
at Wright State (OT)	W	2-1
at Bellarmine	L	2-3
at Eastern Illinois (OT)	L	2-3
Dowlan	T	1-1
(at New York Tech)		
at New York Tech	L	2-3
Indianapolis	W	2-1

Northern Kentucky (at Oakland)	T	1-1
at Oakland	L	0-2
St. Joseph's	W	7-0
at Bellarmine	W	3-0
at Lewis	L	0-1

1987 (8-11-1)

Missouri-Rolla	W	2-1
at Kentucky Wesleyan	L	2-4
at IUPU Ft. Wayne	W	4-0
Oakland	L	0-4
at Gannon	L	0-5
New York Tech (at Gannon)	L	0-2
at St. Joseph's	W	3-0
at Lewis	W	1-0
Eastern Illinois	L	0-8
at Missouri-St. Louis	L	0-2
Benedictine (at UMSL) (OT)	W	1-0
Northeast Missouri	L	0-2
at Indianapolis	W	4-1
Northern Kentucky	W	3-1
DePauw	L	1-2
at Davis & Elkins	L	1-4
at Alderson Broaddus	L	0-4
Bellarmino	L	2-3

1988 (14-6) GLVC CHAMPIONS

Brescia	W	7-1
at Northeast Missouri	L	3-4
at Missouri-Rolla	W	1-0
at Oakland	L	0-1
Kentucky Wesleyan	W	2-0
Rollins (at UMSL)	L	1-2
Oral Roberts (at UMSL)	W	5-0
Lewis (OT)	L	1-2
St. Joseph's	W	9-0
at Bellarmine	W	2-1
Missouri-St. Louis	L	0-3
Louisville	W	2-0
at IUPU Ft. Wayne	W	6-0
at Indianapolis	W	5-0
Southeast Missouri	W	4-0
at Northern Kentucky	W	3-0
at DePauw	L	0-1
Indianapolis	W	7-0
Northern Kentucky (at Lewis)	W	1-0
at Lewis	W	2-1

1989 (15-8-1) GLVC CHAMPIONS

National College of Education	W	6-0
at Sangamon State	L	2-4
at Louisville	T	2-2
Shippensburg (N)	W	2-0
Gannon (N) (OT)	L	2-5
Missouri-Rolla	W	3-2
at Lewis	L	1-2
at St. Joseph's	W	2-0
at Brescia	W	2-0
Wisconsin-Parkside (N)	W	1-2
at Wilmington	L	1-2
at Kentucky Wesleyan	W	2-0
Oakland	L	0-1
East Stroudsburg	L	1-2
Bellarmino	W	5-0
IUPU Ft. Wayne	W	5-0
Indianapolis	W	7-1
Northern Kentucky	W	2-0
Northeast Missouri	W	1-0
at Missouri-St. Louis	L	0-1
at Southeast Missouri	L	0-1
IUPU Ft. Wayne*	W	5-0
Lewis*	W	3-1
Bellarmino*	W	5-0

(N) Neutral Site

* GLVC Tournament

SERIES RECORD VS. OPPONENTS

Alabama A&M	0-1-0	Harris Stowe	4-0-0	Oakland	1-7-2
Alabama Huntsville	0-1-1	Indiana	0-4-0	Oral Roberts	1-0-0
Alderson Broaddus	0-1-0	Indianapolis	9-0-0	Purdue	3-0-0
Bellarmino	12-3-0	IUPU Ft. Wayne	10-0-1	Quincy	0-1-0
Benedictine	1-0-0	Kentucky Wesleyan	9-4-0	Rollins	0-1-0
Brescia	2-0-0	Lewis	11-5-0	Sangamon State	1-2-1
Campbell	0-1-0	Lindenwood	1-0-0	Shippensburg	1-0-0
Catawba	0-1-0	Lock Haven	0-1-0	South Carolina-Spartanburg	0-0-1
Chicago Circle	0-1-0	Louisville	2-1-3	Southeast Missouri	6-2-0
Cleveland State	0-1-0	Loyola	1-0-0	St. Joseph's	7-0-0
Davis & Elkins	0-2-0	Marquette	1-0-0	Transylvania	2-0-0
DePauw	2-2-0	McKendree	1-1-0	Vanderbilt	5-2-0
Dowlan	0-0-1	Missouri-Rolla	7-1-1	Washington Univ. (Mo.)	0-3-0
Eastern Illinois	0-6-0	Missouri Southern	1-0-0	Western Illinois	0-2-0
East Stroudsburg	0-1-0	Missouri-St. Louis	0-6-0	Western Kentucky	2-0-0
Emory	1-0-0	National College of Education	1-0-0	Wheaton	2-0-0
Erskine	1-0-0	New York Tech	0-2-0	Wilmington	0-1-0
Fontbonne	1-0-0	North Carolina	0-1-0	Wisconsin-Green Bay	1-0-0
Gannon	0-2-0	North Carolina-Greensboro	0-1-0	Wisconsin-Parkside	2-2-1
Georgia State	2-0-0	Northeast Missouri	3-2-1	Wright State	4-2-1
Grace College	1-0-0	North Texas State	0-1-0	Xavier	1-0-0
Greensboro College	1-0-0	Northern Kentucky	9-0-1		



1990 GAME RESULTS

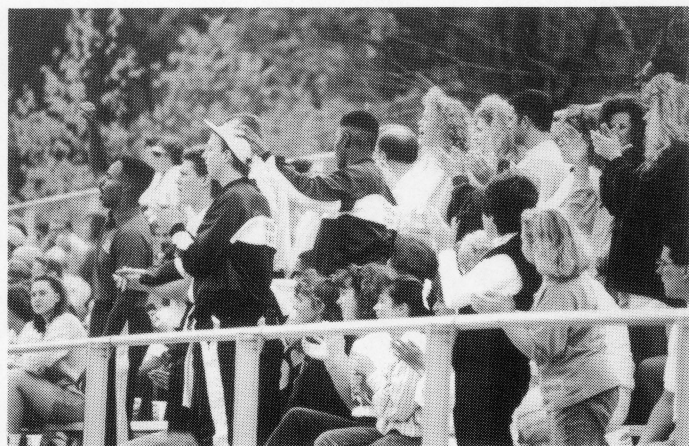
DATE	TEAM	SCORE	W/L/T	H/A/N	USI SCORERS
9-8-90	USC Spartanburg ★	4-4	T	H	Hamilton, King (2), Marx,
9-9-90	Erskine ★	3-2	W	H	Marx, Gibson, Schoenstein
9-15-90	Northern Kentucky *•	3-1	W	A	Lattner (2), Schoenstein
9-16-90	Lock Haven •	0-1	L	N	
9-19-90	UNC-Greensboro	0-5	L	A	
9-20-90	Catawba	0-1	L	A	
9-22-90	Lewis *	4-0	W	H	Hehr, Gibson, Houben (2)
9-23-90	St. Joseph's *	5-0	W	H	Schoenstein (2), Gibson, Lattner, Doughty
9-26-90	Kentucky Wesleyan *	9-0	W	H	Hamilton, Gibson (2), Doughty, Schoenstein (2), Pemberton (2), Moore
9-30-90	Missouri-St. Louis	0-1	L	H	
10-3-90	Bellarmino *	2-0	W	A	Bennett, Marx
10-11-90	Sangamon State	4-3	W	H	Schoenstein, King, Gibson, Houben
10-13-90	IPFW *	7-0	W	A	Doughty, King (2), Gibson (2), Bennett, B. Smith
10-14-90	Indianapolis *	7-0	W	A	Sweeney, Doughty, Marx, Gibson, Schultheis, Wilhite, Malaek
10-16-90	Fontbonne	2-0	W	H	Schoenstein, Wilhite
10-20-90	Southeast Missouri	4-0	W	H	Houben, Marx, Gibson (2)
10-22-90	Missouri Southern	2-0	W	A	King, Gibson
10-27-90	Northeast Missouri	0-0	T	A	
10-28-90	Missouri-Rolla	0-1	L	A	
10-31-90	IPFW ✓	6-0	W	H	Doughty, Gibson (2), Marx, King, Seitz
11-3-90	St. Joseph's ✓	3-0	W	H	Gibson (2), Lattner
11-4-90	Northern Kentucky ✓**	6-0	W	H	Sweeney (3), Gibson, Lattner, Wilhite

★ USI Tournament • NKU Tournament * GLVC ✓ GLVC Tournament ** GLVC CHAMPIONS 3RD CONSECUTIVE YEAR

SCREAMING EAGLES RECORDS

TEAM RECORDS

Most wins in a season15 (1989 & 1990)
 Most losses in a season11 (1987)
 Most ties in a season4 (1986)
 Highest win-loss percentage15-3 (1983)
 Most consecutive wins8 (1983)
 Most consecutive losses4 (1981, 1987)
 Most consecutive shutouts6 (1990)
 Longest unbeaten streak12 (10/17/81—10/9/82)
 Most goals in a season71 (1990)
 Least goals in a season21 (1981)
 Least goals allowed in a season12 (1983)
 Most shutouts in a season13 (1990)
 Most goals14 vs. Indianapolis (1982)
 scored in a game
 Most goals8 vs. Eastern IL (1987)
 conceded in a game
 Greatest winning margin14 vs. Indianapolis (1982)
 Greatest losing margin8 vs. Eastern IL (1987)



INDIVIDUAL RECORDS

Most goals in a game5 Michael Corday
 vs. St. Joseph's (1986)
 Most goals in a season23 Michael Corday (1986)
 Most goals in a career63 Michael Corday (1983-86)
 Most assists in a season14 Chris King (1989),
 14 Moulton Cato (1984)
 Most assists in a career52 Moulton Cato (1981-1984)
 Most shutouts in a season9 Greg Tassios (1984)
 Most shutouts in a career28 Matt Blauvelt (1987-90)
 Lowest goals against average ...0.70 Matt Blauvelt (1990)

(Minimum of 1,500 minutes)



AWARDS AND HONORS

ALL-AMERICAN

Stewart Dowds-1983

ALL-REGION

Moulton Cato-1982, 1983, 1984
 Michael Corday-1986
 Kevin Larkin-1986
 Andy McCulloch-1987, 1988
 John Heerdink-1987
 Kevin Swords-1988, 1989
 Jamison Egler-1988
 Eric Schoenstein-1988
 Chris King-1989, 1990
 Travis Marx-1989, 1990
 Shane Gibson-1990

All-Region Players are also part of the All-State team.

ALL-STATE

Jamison Egler-1989
 Robert Bennett-1990
 Dean Doughty-1990

GLVC PLAYER OF THE YEAR

Shane Gibson-1990

ALL-GLVC

Michael Corday-1986
 Kevin Larkin-1986
 Tim Koncki-1986
 Andy McCulloch-1987, 1988
 John Heerdink-1987, 1988
 Kevin Swords-1987, 1988, 1989
 Paul Kumar-1988
 Eric Schoenstein-1988, 1990
 Chris King-1988, 1989, 1990
 Travis Marx-1989, 1990
 Brad Schulthies-1989
 Matt Blauvelt-1990
 Robert Bennett-1990
 Shane Gibson-1990
 Joe Lattner-1990

MOST VALUABLE PLAYERS

Michael Corday-1986 (Offensive)
 Ken Veilands-1986 (Defensive)

John Heerdink-1988

Kevin Swords-1989
 Dean Doughty-1990

MOST IMPROVED

D.J. Rumpler-1986, 1988
 Greg Frasier-1987
 Melvin Seitz-1990

MOST DEDICATED

Brent Churchill-1987, 1988, 1989, 1990

CAPTAINS

1986-Michael Corday, Craig Kriska and Kevin Larkin
 1987-Kevin Larkin, Kevin Swords, and John Heerdink
 1988-John Heerdink and Kevin Swords
 1989-Kevin Swords
 1990-Robert Bennett, Shane Gibson, Chris King

1991 OPPONENTS

California State University at Chico . . . Chico, Calif.; 16,500 students; NCAA II; Northern California Athletic Conference; Wildcats; 11-7-3 overall record in 1990; Head Coach Don Batie.

Oct. 12—at Hoechst Celanese Tournament (Spartanburg, S.C.), 5:30 p.m. (ET)

Drake University . . . Des Moines, Iowa; 8,029 students; NCAA; Missouri Valley Conference; Bulldogs; 11-8-3 overall record in 1990; Head Coach Bob Wood.

Sept. 8—at Strassweg Field, 2:00 p.m.

Gannon University . . . Erie, Penn.; 4,725 students; NCAA II; Independent; Golden Knights; 15-3-0 overall record in 1990; Head Coach (TBA).

Sept. 1—at Erie, Penn.

Longwood College . . . Farmville, Va.; 3,200 students; NCAA II; Mason-Dixon Conference; Lancers; 11-6-1 overall record in 1990; Head Coach Stan Cieplinski.

Sept. 28—at Strassweg Field (USI Tournament)

Mercyhurst College . . . Erie, Penn.; 2,100 students; NCAA II; Independent; 12-7-1 overall record in 1990; Head Coach Trevor Warren.

Aug. 31—at Erie, Penn.

University of Missouri-Kansas City . . . Kansas City, Mo.; 12,000 students; NCAA I; Independent; Kangaroos; 4-11-1 overall record in 1990; Head Coach Kelly Ross.

Oct. 5—at St. Louis, Mo. (St. Louis Soccer Park)

University of Missouri-Rolla . . . Rolla, Mo.; 5,000 students; NCAA II; Independent; The Miners; 8-10-1 overall record in 1990; Head Coach (TBA).

Sept. 17—at Strassweg Field, 7:00 p.m.

University of Missouri-St. Louis . . . St. Louis, Mo.; 12,000 students; NCAA II; The Rivermen; 14-5 overall record in 1990; Head Coach Tom Redmond.

Oct. 23—at St. Louis, Mo., 7:30 p.m.

Missouri Southern State College . . . Joplin, Mo.; 6,000 students; NCAA II; Independent; The Lions; 7-9-2 overall record in 1990; Head Coach Scott Poertner.

Oct. 25—at Strassweg Field, 7:00 p.m.

Northeast Missouri State University . . . Kirksville, Mo.; 5,800 students; NCAA II; Independent; The Bulldogs; 13-4-1 overall record in 1990; Head Coach Dave Poggi.

Sept. 27—at Strassweg Field (USI Tournament), 8:00 p.m.

Oakland University . . . Rochester, Mich.; 12,000 students; NCAA II; Independent; The Pioneers; 18-3-1 overall record in 1990; Head Coach Gary Parsons.

Sept. 14—at Rochester, Mich., 2:00 p.m. (ET)

University of South Carolina Spartanburg . . . Spartanburg, S.C.; 3,501 students; NCAA II; Peach Belt Atlantic Conference; 9-8-1 overall record in 1989; Head Coach Rob Russo.

Oct. 11—Hoechst Celanese Tournament at Spartanburg, S.C., 7:30 p.m.

University of Wisconsin-Parkside . . . Kenosha, Wis.; 5,200 students; NCAA II/NAIA; Independent; Rangers; 13-7-0 overall record in 1990; Head Coach Rick Kilps.

Oct. 6—at St. Louis, Mo. (St. Louis Soccer Park)

GREAT LAKES VALLEY CONFERENCE

Bellarmino College . . . Louisville, Ky.; 1,139 students; NCAA II; The Knights; 8-10-2 overall record in 1990; 3-4-0 GLVC record in 1990; Head Coach Dan Gleeson.

Oct. 2—at Strassweg Field, 7:00 p.m.

University of Indianapolis . . . Indianapolis, Ind.; 3,300 students; NCAA II; The Greyhounds; 8-7-1 overall record in 1990; 3-3-1 GLVC record in 1990; Head Coach Mike Moore.

Oct. 20—at Strassweg Field, 2:00 p.m.

Indiana-Purdue Ft. Wayne . . . Ft. Wayne, Ind.; 10,500 students; NCAA II; The Mastodons; 1-15-2 overall record in 1990; 0-6-1 GLVC record in 1990; Head Coach Troy Rushing.

Oct. 13—at Strassweg Field, 1:00 p.m.

Kentucky Wesleyan College . . . Owensboro, Ky.; 800 students; NCAA II; The Panthers; 4-10-2 overall record in 1990; 1-5-1 GLVC record in 1990; Head Coach Roy Chai.

Sept. 25—at Owensboro, Ky., 4:00 p.m.

Lewis University . . . Romeoville, Ill.; 3,500 students; NCAA II; The Flyers; 8-8-1 overall record in 1990; 3-3-1 GLVC record in 1990; Head Coach Alex Hernandez.

Sept. 21—at Romeoville, Ill., 1:00 p.m.

Northern Kentucky University . . . Highland Heights, Ky.; 10,300 students; NCAA II; The Norsemen; 9-9-1 overall record in 1990; 6-1 GLVC record in 1990; Head Coach John Toebben.

Oct. 18—at Strassweg Field, 7:00 p.m.

St. Joseph's College . . . Rensselaer, Ind.; 900 students; NCAA II; The Pumas; 14-8-2 overall record in 1990; 2-3-2 GLVC record in 1990; Head Coach Mike Minielli.

Sept. 22—at Rensselaer, Ind., 2:00 p.m.

Radisson Inn Says "Go Eagles"

Radisson

Radisson[®]
I N N E V A N S V I L L E

Present this ad at
Cloud's Restaurant.
With purchase of 1st
entree receive 2nd
entree, of equal or
lesser value, at half
price. Expires
12/31/91.

7101 U.S. 41 North • Evansville, IN 47711
TELEPHONE (812) 867-7999

RADISSON RESERVATIONS WORLDWIDE
1-800-333-3333

Radisson[®]
I N N E V A N S V I L L E



Dear Credit Union,

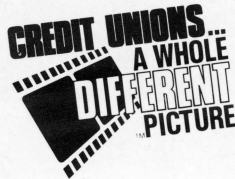
We can't picture a smarter move!

It doesn't seem possible that the years went by this fast. We started Kari's credit union savings plan when she was just a baby!

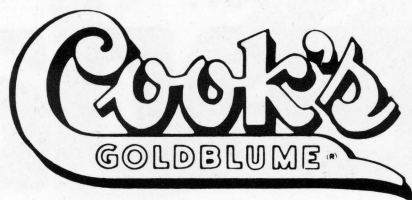
Thanks for the smart advice...and the great interest rates over the years. You taught us that "higher education" starts by enrolling as a credit union member!

Peg, Ted & "The Graduate"

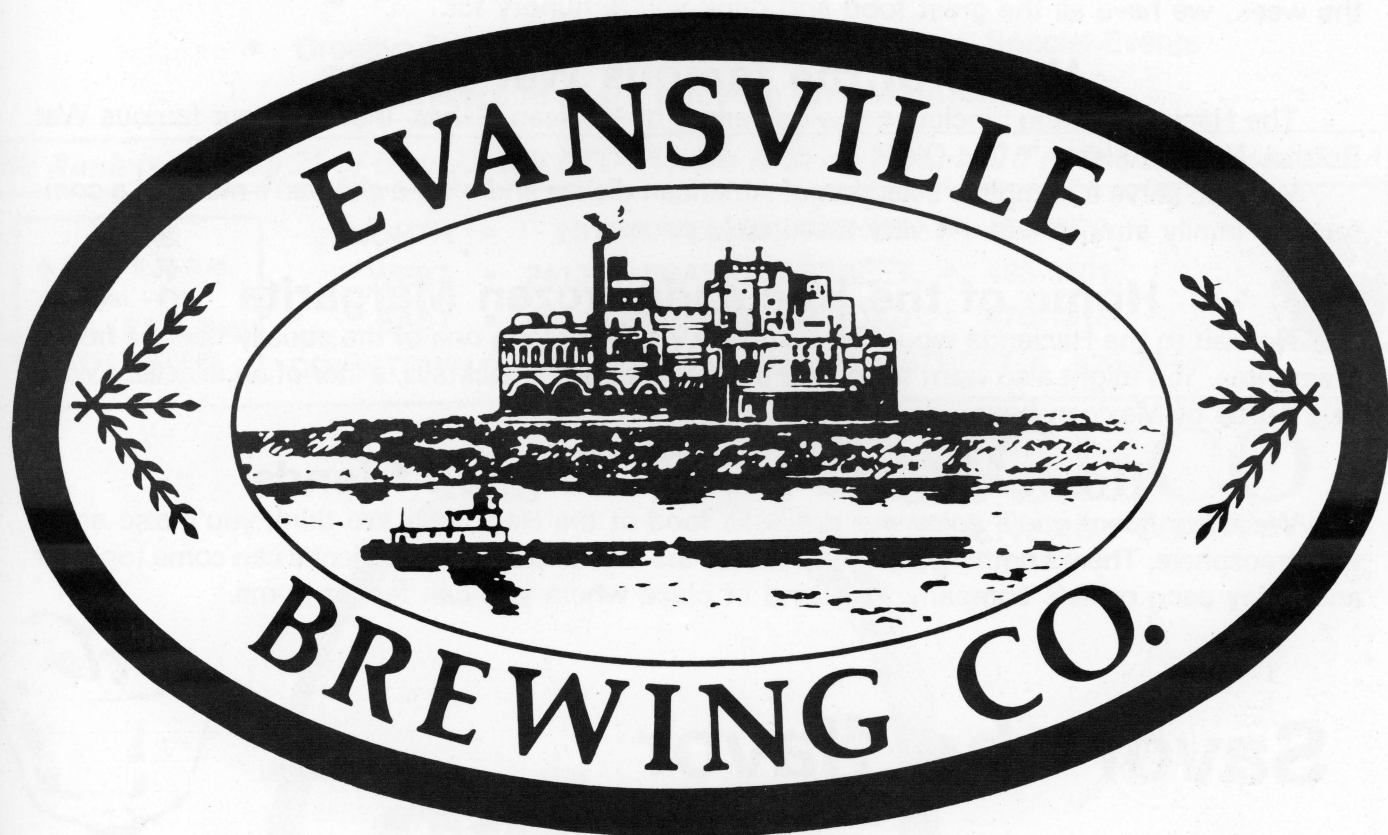
EVANSVILLE TEACHERS FEDERAL CREDIT UNION
 Main Office 477-9271 • West Evansville Office 422-8204 • "Member NCUA"



***Sterling Falls City* DREWRY'S®**



WIEDEMANN®



*Brewers of
Fine Malt Beverages*

Hacienda

MEXICAN • RESTAURANT

For the finest Mexican cuisine north of the border, come home to the Hacienda. Any day of the week, we have all the great food and drink you're hungry for.

Home of the famous Wet Burrito

The Hacienda menu includes a wide variety of Mexican dishes. Including our famous Wet Burrito, Nachos Fiesta,[™] Tac-Ole.[™]

We also serve a complete selection of American dishes and offer a children's menu in a comfortable family atmosphere. At very reasonable prices.

Home of the Hacienda frozen Margarita

No visit to the Hacienda would be complete without trying one of the equally famous frozen Margaritas. You might also want to try one of our other great cocktails, a liter of an excellent wine or a bottle of Mexican beer.

Home of good food...and good friends

We're confident you'll enjoy our delicious food at the Hacienda. We think you'll also enjoy the atmosphere. There's nothing pretentious. Just the kind of place where friends can come together and enjoy each other's company. The kind of place where you can feel at home.

Savor the flavor of old Mexico.

**Come Home
to Hacienda**

**711 North First Avenue
423-6355**

**405 S. Green River Rd.
474-1635**

Evansville

Open
11-10 Mon.-Thurs.
11-11 Fri. & Sat.
12-10 Sun.



Good Luck, Screaming Eagles!



serving all your floral needs since 1900

- Creative Designers, Consultants for Weddings, Special Events
- Commercial Plant Leasing and Maintenance

We Rank in the Top 25 of Over 22,000 FTD Florists & Send 7 Out of 10 FTD Orders from this Area

HOURS:
8 A.M. - 5:30 P.M.
Mon. - Fri.
8 A.M. - 5 P.M. Sat.
Closed Sunday

NORTH • 2011 N. FULTON AVENUE • 425-7272
WEST • 2413 W. FRANKLIN STREET • 423-6401
EAST • 401 S. GREEN RIVER ROAD • 476-1313
DOWNTOWN ON THE WALKWAY 327 MAIN STREET • 423-4448



*Live
like there's a
tomorrow*

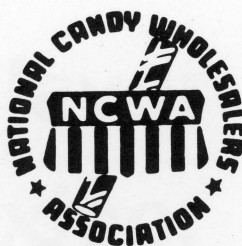
SIGECO
THE ENERGY COMPANY



**SAVE
ENERGY
TODAY!**

“ GO EAGLES! ”
FISCHER CANDY CO.
EVANSVILLE
812-425-1145
WHOLESALE
FUND — RAISING
COMPLETE VENDING

SWEETEN YOUR DAY WITH CANDY



NAMA®

National Automatic Merchandising Association



GE Plastics

Mt. Vernon, Indiana

**Committed
to leadership
in the Plastics Industry,
and to the
continued prosperity
and safety
of our Community.**

Q: WHY EAT AT DARRYL'S?

A: MULTIPLE CHOICE...

A VARIETY—From thick steaks to chocolate cakes, from light treats to decadent feasts, we make great tastes of America taste great!

B VALUE—At Darryl's, we think you'll find you always get a lot of great food for your money . . . without spending a lot of money to get it!

C REAL PEOPLE, REAL TIMES—There's no better place for being yourself with family, friends or that special someone—knowing *you'll* be treated like a special someone every time.

D ALL OF THE ABOVE

CORRECT ANSWER: D

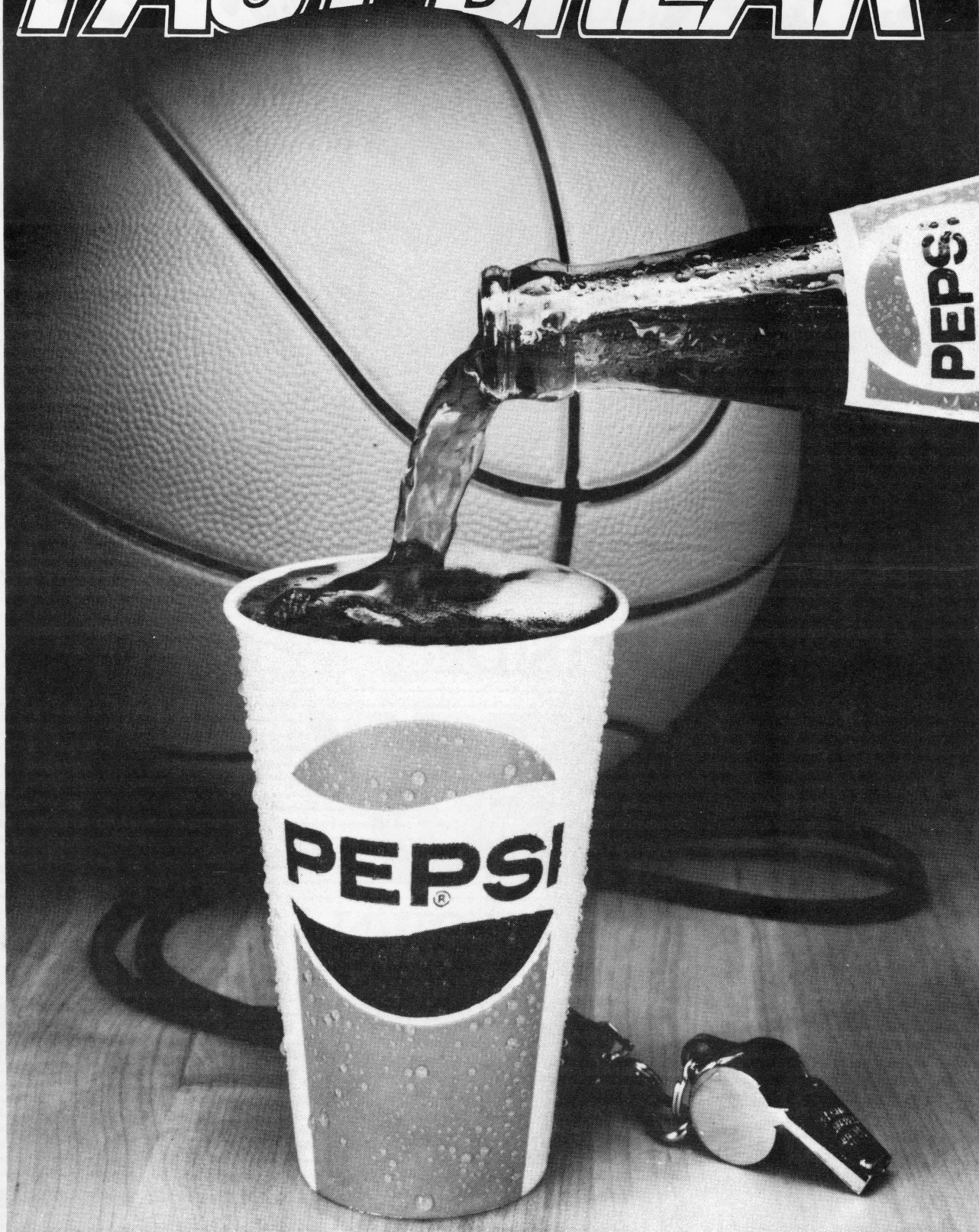
DARRYL'S[®]

YOU BELONG AT DARRYL'S

ON GREEN RIVER ROAD
ACROSS FROM EASTLAND MALL
474-1920

©1990 Gilbert/Robinson, Inc.

FAST BREAK





*Providing
Award Winning
Performance*

**KENNY
KENT**

**TOYOTA
SUBARU**

A winning performance is the product of solid preparation.

EASTSIDE

5600 DIVISION
PH. 473-5600

Kenny Kent's commitment to sales and service guarantees you great performance in both the automobile and dealer service.

**KENNY
KENT**

**CHEVROLET
MAZDA
VOLVO**

Select a new Car, Truck, or Custom Van from Kenny Kent and you'll know how it feels to be in the spotlight.

DOWNTOWN

SECOND & VINE
PH. 423-7851

**KENNY
KENT**

**TRUCKS
CUSTOM VAN
OUTLET
YUGO**

NORTHSIDE

DIAMOND & HEIDELBACH
PH. 423-6441

Holiday Inn® EVANSVILLE *East*

REMEMBER US FOR . . .



Breakfast, lunch, dinner, buffet, brunch, room service, family dining, dining alone, featuring our famous Hot Brown.



Parties, anniversaries, homecomings, parents weekends, weddings, fraternity and sorority dances.



Meetings, business travelers, secretaries, meeting planners, associations, government.



Romantic weekends, two for lunch, cocktails for two, lounge promotions, dinner for two at Zack's.



Buffets, weddings, receptions, New Year's Eve, holidays, special occasions.



Banquets, receptions, holiday office parties, dinner meetings, catering.

Holiday Inn®

Stay with someone you know.®

100 S. GREEN RIVER RD • EVANSVILLE, IND. • (812) 473-0171



EXTRA EFFORT

**MAKES THE
WINNING
DIFFERENCE!**

mecTM

Medical Center

Lawndale • North Brook • Westside
473-0307 428-6161 424-3355

Quality Medical Care, At Your Convenience!

Goal Achiever

Set your sights high, then go for your goals in adidas soccer shoes. Comfortable and supportive, these shoes are ready for your fanciest footwork. Get a kick out of adidas today.

Sports Quarters



Enter Sports Quarters

adidas 

\$15,000.00 CASH GIVEAWAY

**University Shopping Center
Evansville, Indiana 47712**

Team Up with Schnucks for All Your Party Needs!

- **Fresh Deli Meats & Fine Cheeses**
sliced to order while you wait
- **Fresh Seafood & Shellfish**
backed by our double money back guarantee
- **Fully Stocked Salad Bar**
offering hot & cold selections
- **Nancy Anne Bakery**
with custom cake decorating
- **Full Service Schnucks Florist**
with custom arrangements and
wire service delivery

We're Open 24 Hours at 3 Convenient Locations:
3700 First Ave. • 4600 Washington
4500 West Lloyd Expressway

Schnucks

The Friendliest Stores in Town

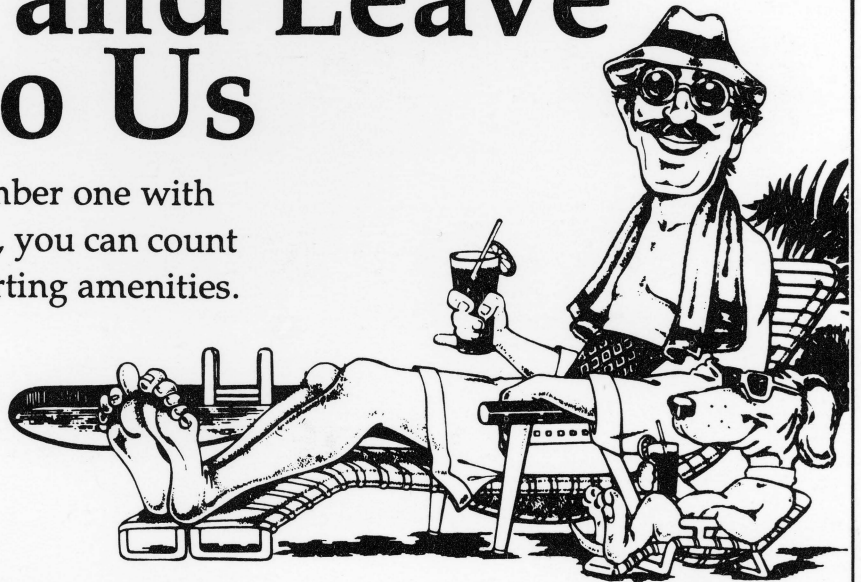
Proud sponsor of the U.S.I. Eagles

Check In and Leave the Rest to Us

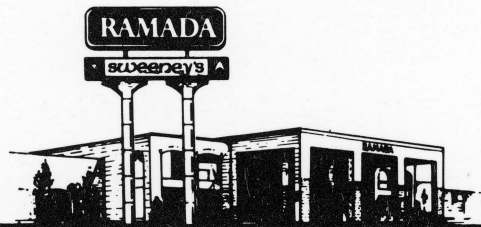
Your rest and relaxation are number one with us, so when you stay with Ramada, you can count on the best services and the comforting amenities.

Planning a party or reception?
The Ramada is the ideal choice for
all kinds of special events.

For Meetings, parties, or when
you're traveling for business or
pleasure, check in at the Ramada and let us handle
the rest.



- Deluxe Guest Rooms • Group Rates
- Sweeney's Restaurant • Sweeney's Sports Bar
- Indoor Pool • Whirlpool • Saunas
- Workout Room • Free In-room Movies



RAMADA[®] EVANSVILLE

For reservations of further information, please call (812) 424-6400
4101 U.S. Highway 41 North, Evansville, Indiana 47711

USI SCORECARD

VISITOR

Goal by	Time	Assist

Goal by	Time	Assist

Shots:

1 2 3 4 5 6 7 8 9 10
 11 12 13 14 15 16 17 18 19 20
 21 22 23 24 25 26 27 28 29 30

Shots:

1 2 3 4 5 6 7 8 9 10 11
 11 12 13 14 15 16 17 18 19 20
 21 22 23 24 25 26 27 28 29 30

Corner Kicks:

1 2 3 4 5 6 7 8 9 10
 11 12 13 14 15 16 17 18 19 20

Corner Kicks:

1 2 3 4 5 6 7 8 9 10
 11 12 13 14 15 16 17 18 19 20

Saves:

1 2 3 4 5 6 7 8 9 10
 11 12 13 14 15 16 17 18 19 20

Saves:

1 2 3 4 5 6 7 8 9 10
 11 12 13 14 15 16 17 18 19 20

Fouls:

1 2 3 4 5 6 7 8 9 10
 11 12 13 14 15 16 17 18 19 20
 21 22 23 24 25 26 27 28 29 30
 31 32 33 34 35 36 37 38 39 40

Fouls:

1 2 3 4 5 6 7 8 9 10
 11 12 13 14 15 16 17 18 19 20
 21 22 23 24 25 26 27 28 29 30
 31 32 33 34 35 36 37 38 39 40

Offsides:

1 2 3 4 5 6 7 8 9 10
 11 12 13 14 15 16 17 18 19 20

Offsides:

1 2 3 4 5 6 7 8 9 10
 11 12 13 14 15 16 17 18 19 20