

Dressed for **SUCCESS**

University of  
Southern Indiana

Women's Basketball MEDIA GUIDE



S  
C  
R  
E  
A  
M  
I  
N  
G  
E  
A  
G  
L  
E  
S



# GE People

*Family. Friends. Neighbors*

Committed to the  
continued prosperity  
and safety of  
our community  
and the  
environment



---

***GE* Plastics**  
***Mt. Vernon, In.***

# 2000-2001 USI Women's BASKETBALL SEASON

## Table of Contents

About USI	2-3	Meet the Screaming Eagles	10-14
President H. Ray Hoops	4	2000-01 USI Opponents	15
Steve Newton, Director of Athletics	4	1999-2000 Statistics and Results	16
About USI from the Student Athletes	5	1999-2000 GLVC Standings and All-GLVC Teams	17
2000-01 Women's Basketball Outlook	6	USI Record Book	18-21
Women's Basketball Coaching Staff		Varsity Club All-Americans and Super Sponsors	22
Rick Stein, Head Coach	7	USI Quick Facts	23
LeAnn Freeland, Asst. Coach	8	GLVC Tournament Schedule	24
Randa Gatling, Asst. Coach	8		



SCREAMING EAGLES

## 2000-2001 Women's Basketball Schedule

DATE	OPPONENTS	TIME	DATE	OPPONENTS	TIME
Sat., November 18	INDIANA INSTITUTE OF TECHNOLOGY	5:15 p.m.	Thu., February 1	@ Saint Joseph's College*	5:15 p.m.
Sat., November 25	PURDUE UNIVERSITY-CALUMET	1:00 p.m.	Sat., February 3	@ Indiana University/Purdue University Ft. Wayne*	12:00 p.m.
Thu., November 30	INDIANA UNIVERSITY/PURDUE UNIVERSITY FT. WAYNE*	5:15 p.m.	Thu., February 8	UNIVERSITY OF MISSOURI-ST. LOUIS*	5:15 p.m.
Sat., December 2	SAINT JOSEPH'S COLLEGE*	5:15 p.m.	Sat., February 10	QUINCY UNIVERSITY*	3:00 p.m.
Sat., December 9	SOUTHERN ILLINOIS UNIVERSITY EDWARDSVILLE*	5:15 p.m.	Tue., February 13	@ Southern Illinois University Edwardsville*	5:30 p.m.
Sat., December 16	OAKLAND CITY UNIVERSITY <i>Northwest Missouri State University Disney Classic • Orlando, Florida</i>	1:00 p.m.	Thu., February 15	@ University of Wisconsin-Parkside*	5:30 p.m.
Tue., December 19	vs. University of Northern Colorado	12:00 p.m.	Sat., February 17	@ Lewis University*	1:00 p.m.
Wed., December 20	vs. Northwest Missouri State University	8:00 a.m.	Thu., February 22	KENTUCKY WESLEYAN COLLEGE*	5:15 p.m.
Fri., December 29	FERRIS STATE UNIVERSITY	5:15 p.m.	Sat., February 24	BELLARMINE UNIVERSITY*	5:15 p.m.
Thu., January 4	@ University of Indianapolis*	4:30 p.m.			
Sat., January 6	NORTHERN KENTUCKY UNIVERSITY*	5:15 p.m.			
Thu., January 11	@ Quincy University*	5:15 p.m.			
Mon., January 15	@ University of Missouri-St. Louis*	3:00 p.m.			
Thu., January 18	LEWIS UNIVERSITY*	5:15 p.m.			
Sat., January 20	UNIVERSITY OF WISCONSIN-PARKSIDE*	1:00 p.m.			
Thu., January 25	@ Bellarmine University*	4:45 p.m.			
Sat., January 27	@ Kentucky Wesleyan College*	5:15 p.m.			

### Great Lakes Valley Conference Tournament

(Roberts Stadium, Evansville, Indiana)  
Wed., February 28-Sat., March 3

### NCAA Division II Tournament

Thu., March 8-Sun., March 11: Great Lakes Regional (site to be determined)  
Wed., March 21-Sat., March 24: Elite Eight (site: Rochester, Minnesota)

\*GLVC Games; HOME GAMES IN CAPS; Road Games in Italics; All Times are CST

# About the University of **SOUTHERN INDIANA**

## **Location.**

Founded in 1965, the University of Southern Indiana is located in Evansville, the state's third largest city. From its picturesque site on the Ohio River, Evansville is a comfortable drive from the major metropolitan areas of Indianapolis, Cincinnati, Louisville, Nashville, and St. Louis.

## **Academic Life.**

The University enrolls over 9,000 students and offers undergraduate majors in 60 areas of study. Several graduate degree programs also are available.

## **Campus Life.**

Beyond the classroom, students have opportunities to participate in more than 80 organizations offering co-curricular and extracurricular activities. Special interest clubs, student government, sororities and fraternities, music and drama groups, and other organizations enable the student to enjoy and contribute to campus life.

## **Residence Life.**

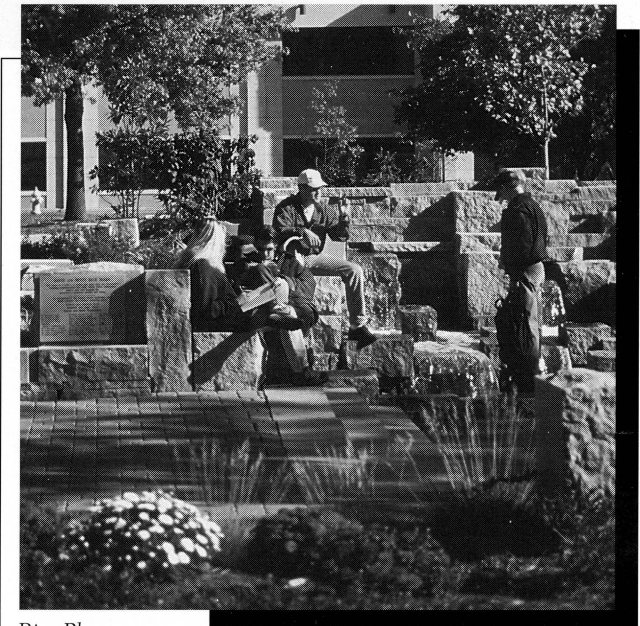
USI offers two kinds of housing. One is the conventional apartment and the other is suite-style housing in a residence hall. Computer labs, laundromats, a convenience store, outdoor recreational areas, and student lounges contribute to an efficient living environment that has proven overwhelmingly popular with students. A meal plan is available in the University Center. More than 2,500 students live on campus.

## **Financial Assistance.**

Since USI is the most affordable four-year institution in the state of Indiana, many families find that they can handle the cost of a USI education without financial aid. Many others qualify for need-based financial aid packages, including grants, loans, and jobs.



*Liberal Arts Center*



*Rice Plaza*

## Degrees offered at USI

### Undergraduate Degree Programs

The University of Southern Indiana confers eight undergraduate degrees: Bachelor of Arts, Bachelor of Science in Nursing, Bachelor of Science, Bachelor of General Studies, Bachelor of Social Work, Associate of Arts, Associate of Science in Nursing, and Associate of Science.

### Baccalaureate Degree Programs

#### School of Business

Accounting, Business Administration (students may concentrate in the following areas of interest: Accounting, Computer Information Systems, Entrepreneurship/Small Business, Finance/Economics, Management, Marketing, or Office Information Systems), Business Education, Computer Information Systems, Economics, and Marketing.

#### Bower-Suhrheinrich School of Education and Human Services

Elementary Education (includes Coaching, Computers, Junior High/Middle School and Kindergarten endorsements), Exercise Science, Physical Education, Secondary Education (high school/middle school [grades 5-12] certification is available for most majors), and Social Work.

#### School of Liberal Arts

Advertising/Public Relations, Computer Publishing/Journalism, English, French, German, History, Interpersonal-Organizational Communications, Philosophy, Political Science, Psychology, Radio-Television, Sociology (concentration in Criminal Justice available), Spanish, and Theatre Arts.

#### School of Nursing and Health Professions

Dental Hygiene Education, Health Occupations Education, Health Services, Nursing, Occupational Therapy.

#### Pott School of Science and Engineering Technology

Biology, Biophysics, Chemistry, Civil Engineering Technology, Electrical Engineering Technology, General Science, Geology, Industrial Supervision, Mathematics, Mechanical Engineering Technology.

#### Division of Extended Services

General Studies

### Associate Degree Programs\*

#### School of Business

Administrative Support Systems, Business, and Computer Information Systems.

#### Bower-Suhrheinrich School of Education and Human Services

Early Childhood Education.



#### School of Liberal Arts

Communications, Social Science.

#### School of Nursing and Health Professions

Dental Assisting, Dental Hygiene, Nursing, Occupational Therapy Assisting, Radiologic Technology, and Respiratory Therapy.

\*Note: Normally require less than 4 years of full-time study.

#### Pre Professional Curricula\*\*

Pre-Chiropractic, Pre-Dentistry, Pre-Engineering, Pre-Forestry, Pre-Law, Pre-Medical Technology, Pre-Medicine, Pre-Optometry, Pre-Osteopathy, Pre-Pharmacy, Pre-Physician Assistant, Pre-Physical Therapy, Pre-Podiatry, Pre-Veterinary.

\*\*Note: Require from 1 to 4 years of study at USI prior to applying for admission to appropriate school.

### Graduate Programs

Master of Arts in Liberal Studies

Master of Business Administration

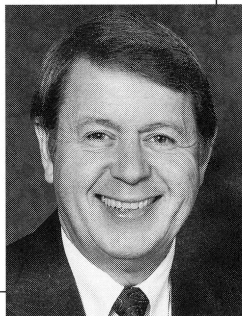
Master of Science in Accountancy

Master of Science in Education (Elementary and Secondary)

Master of Science in Industrial Management

Master of Science in Nursing

Master of Social Work



**H. Ray Hoops, President**

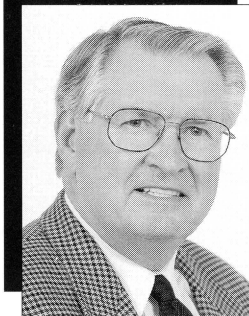
A native of Illinois, H. Ray Hoops received his undergraduate degree from Eastern Illinois University and master's and doctoral degrees in Audiology and Speech Sciences from Purdue University. He also completed an M.B.A. at Moorhead State University.

His career as a scientist and educator has included a faculty appointment jointly at the University of Michigan and Wayne State University. He published extensively and was nationally recognized for his contributions in the areas of rehabilitation of post-surgical patients with cancer of the larynx and in the analysis of language dynamics resulting from brain damage. Among his numerous publications in a variety of behavioral and medical journals was the report on a study which received the National Research Award, the highest honor of the American Speech and Hearing Association. Dr. Hoops also was named Fellow of the Association.

His administrative appointments included the directorship of the Division of Marketing in the U.S. Department of Health, Education, and Welfare. He received two national service awards for that work. He also was a Senior Fulbright-Hayes Research Scholar in the College of Medicine at the University of the Philippines. Other appointments included dean of the Graduate College of the University of Northern Iowa, associate vice chancellor for Academic Affairs for the Oregon State System of Higher Education, vice president for Academic Affairs at North Dakota State University and president of South Dakota State University.

In the six years prior to becoming the second president of the University of Southern Indiana in 1994, Dr. Hoops served as the vice chancellor for Academic Affairs at the University of Mississippi. While at "Ole Miss," Dr. Hoops received the National Council of State Governments Association Award for his pioneering work on Project '95, a blueprint for the reform of education in the state of Mississippi. He also received the Peterson's Guide Award for contributions to the education of minority students in the innovative and highly successful graduate participation initiative.

Dr. Hoops and his wife Linda, academic marketing leader for the Educational Foundation of the National Restaurant Association, are the parents of a daughter, Victoria, an M.B.A. graduate of Ole Miss who lives in Nashville, Tennessee, and is a regional vice president for a nationwide investment firm.



**Steve Newton  
USI Director of Athletics**

Steve Newton, a native of Terre Haute, Ind., was appointed athletic director in 1995.

Named to the NCAA II Great Lakes Regional Advisory Committee in 1997, Newton has brought enthusiasm and pride to the University and to the Athletic Department. With an emphasis on community service, he has directed the creation of the Eagle Math program for grade school students, the Letterwinners Club, the Coaches Club and the Screaming Eagle Scholarship program.

Newton also has placed an importance on assisting student athletes to reach their full potential both academically and athletically. To help the student athlete, he has overseen the creation of the extended aid program for fifth-year students.

Prior to taking the position at USI, Newton was serving as an assistant athletic director at the University of South Carolina. He was the head basketball coach at South Carolina from 1991 to 1993.

His duties at South Carolina included serving as the university representative for pre-Olympic preparations for the 1996 Olympic Games in Atlanta and the South Carolina steering committee for the Olympics.

Newton served as head coach at Murray State University from 1985 to 1991. During his eight seasons as head coach, he was 136-100 (.576). His Murray State team's best run in the NCAA Tournament was in 1988 when it defeated North Carolina State University before losing to eventual national champion University of Kansas, 61-58.

As a head coach, Newton was named the Ohio Valley Conference Coach of the Year in 1988 and 1990 and National Association of Basketball Coaches District VII Coach of the Year in 1988. He led Murray State to four consecutive Ohio Valley Conference championships and post-season tournament appearances (1988-91).

Newton received a bachelor's degree in physical education and master's in education from Indiana State University. He was named a member of the Indiana Basketball Hall of Fame Silver Anniversary team in 1984. Newton and his wife Kathy have four children—daughter LeAyer, and sons Harv, Jay, and Royce.

## What USI players think about **USI**



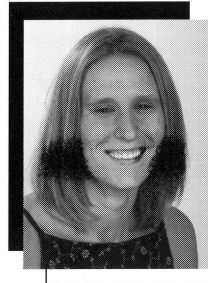
“ USI has such an inviting atmosphere. The campus is beautiful and the people are very friendly. The coaching staff has been extremely helpful. ”

— Jessica Stuckman, Freshman



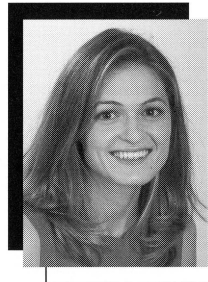
“ (USI) has a very personable attitude with both small and large class sizes. The academics are challenging and athletics stimulate school pride. ”

— Karrie Hochgesang, Senior



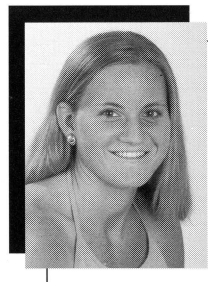
“ The University seems to be friendly and down to earth. Everyone is working toward helping the students accomplish their academic goals. ”

— Miranda Kettery, Junior transfer



“ USI is small enough that most of your professors know your name and are interested in you. ”

— Liz Prewett, Senior



“ USI offers a great education and also gave me an opportunity to play in the competitive GLVC, one of the strongest conferences in Division II. ”

— Natalie Glaser, Senior

# Women's Basketball **OUTLOOK**

**T**en years ago no one would have believed that the University of Southern Indiana women's basketball team would be among the most competitive teams in the Great Lakes Region.

Since the beginning of the decade, the Screaming Eagles have reeled off seven straight winning seasons, a 166-65 overall record, a .706 winning percentage, three GLVC Championships, four trips to the NCAA Division II Tournament, and an appearance in the 1997 NCAA II Finals. The last time the Eagles finished a decade, USI was 19-92 (.171) and finished in the cellar of the Great Lakes Valley Conference.

Second-year **Head Coach Rick Stein** is continuing the winning tradition. Stein, who led the Eagles to a 15-12 overall record in his first season, set a USI record for winning percentage by a rookie head coach, while tying a school record for wins in his first season.

Stein also directed the Eagles to a 10-10 GLVC record and a sixth place finish in a conference that had the NCAA Division II National Champion and two teams in the NCAA II Great Lakes Regional.

This year, Stein will face the challenge of merging six returning players with seven newcomers to contend for the GLVC elite in 2000-01.

The Eagles return a solid group on the perimeter with senior guards **Natalie Glaser** (Evansville, Indiana) and **Karrie Hochgesang** (St. Anthony, Indiana); junior guard/forward **Casey Hughes** (Bicknell, Indiana); and sophomore guard **Bethany Miller** (Princeton, Indiana).

In Glaser and Hughes, the Eagles have two of USI's all-time leading scorers. Hughes, whose 720 points ranks 16th all-time, led the team in scoring with 13.4 points and was third on the team with 5.1 rebounds despite missing three games with an ankle injury. Glaser, who ranks 20th at USI with 591 career points, was second on the team with 12.2 points a contest, while grabbing 4.0 rebounds and dishing out 2.9 assists a game.

Hughes also earned post-season honors for a second year, being named honorable mention All-GLVC.

Miller recovered from early season knee surgery as a freshman to start the final 15 games of the year, leading the team with 3.0 assists per game to go with 5.1 ppg.

As a starter for the Eagles, Miller averaged 7.0 points and 3.8 assists.

Hochgesang had her best season with the Eagles, averaging 4.6 points with a career-high 20 points against Spalding University and 1.8 rebounds. She was named GLVC Player of the Week for her efforts against Spalding and Kentucky State University last December.

On the inside, Stein and the Eagles have two solid returning players to look to for support.

Senior forward/center **Elizabeth Prewett** (Washington, Indiana) rejoined the team when the volleyball season ended and when injuries depleted the bench in 1999-2000. Prewett appeared in 16 games, started nine, and led the team with 7.1 rebounds, while contributing 8.0 points a game.

Also in the frontcourt, the Eagles return junior forward/center **Michelle Irwin** (Louisville, Kentucky). Irwin, who also battled back from injuries to play in 20 games as a sophomore, averaged 3.5 rpg and 3.0 ppg in her first year at USI.

To give USI depth, Stein and the USI coaching staff have added seven new players with a good mix of frontcourt and backcourt experience.

Leading influx of Division I experience is senior forward/center **Casey Nations** (O'Fallon, Illinois). Nations saw limited action at the University of New Mexico last season, but she had a great season as a sophomore, averaging 11.0 points, 9.5 rebounds, and 4.0 blocks at Belleville Area College. She also was named All-Great Rivers Athletic Conference at BAC.

Joining the team as junior forwards/centers are **Miranda Kettery** (Alexandria, Indiana) and **Kimberly Witkowiak** (Milwaukee, Wisconsin).

Kettery averaged 6.7 minutes, 1.8 points, and 1.5 rebounds a game last season for Liberty University, which was 23-8 and advanced the NCAA Division I Tournament. She averaged 15 points and 15 rebounds a game as a senior at Alexandria High School.

Witkowiak saw action in 22 games at the University of Nevada-Reno, which was 19-10 while winning the Eastern Division of the Big West Conference in 1999-2000. The 6'4" junior averaged 1.2 ppg and 1.3

rebounds last year, but tallied 14.0 ppg and 9.0 rebounds a contest as a senior at Milwaukee Vincent High School.

In the backcourt, Stein adds two junior guards, **Jasmine Moore** (Chicago, Illinois) and **Mevett Wooley** (Carbondale, Illinois), and two freshmen, guard/forward **Jessica Stuckman** (Quincy, Illinois) and guard **Erin Wall** (New Albany, Indiana).

Moore helped the Lady Vols of John A. Logan College to the Region XXIV finals, averaging 11.2 points and 3.1 assists. The Region XXIV All-Tournament team member also had 153 career steals in two seasons.

Wooley, an All-Mid Florida Conference performer, led Seminole Community College to a 27-6 record in 1999-2000. She averaged 13.0 points and 4.5 assists as a sophomore.

Stuckman starred last year at Quincy High School, averaging 17.3 ppg, 9.1 rpg, 4.0 steals, and 3.0 assists and was named to two All-State teams (first team by Illinois Basketball Coaches Association and third team by Associated Press). She finished her career at QHS as the second all-time leading scorer with 1,296 points.

Wall, a graduate of New Albany High School, averaged 9.1 points and 3.3 assists a game and was named first team All-Hoosier Hills Conference. She was selected for the Hoosier Basketball Coaches Association All-Star team in 1999-2000.

Considering that more than half of the squad will be making its first appearance in an Eagles' uniform this season, Stein will have to mold the players into a cohesive squad quickly.

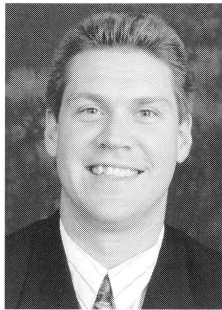
The team will play Northern Kentucky University, the Division II National Champion, at the Physical Activities Center, along with the University of Missouri-St. Louis and Ferris State University, who were in the NCAA II Great Lakes Regional in 2000.

USI also will travel to Florida to play in the Northwest Missouri State University Disney Classic in December. The Eagles will play the University of Northern Colorado, a NCAA II Tournament team, in the two-day tournament.



# Women's COACHING STAFF

## USI Head Coach Rick Stein



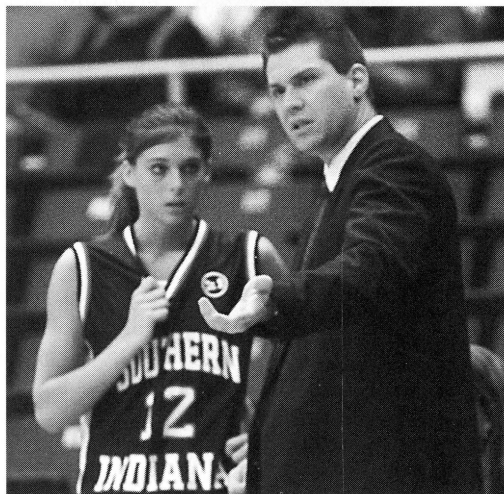
Rick Stein enters his second season at the helm of the University of Southern Indiana women's basketball program. In his first season, Stein went 15-12 overall, tying the record for most victories for a rookie head coach and setting the record for best winning percentage for a rookie coach (.556).

Stein is a 1992 USI graduate with a Bachelor of Science degree in business administration. He joined the Lady Eagles program in 1991-92 as a graduate assistant under former Head Coach Chancellor Dugan. He was promoted

to head assistant coach in 1994 and promptly helped Dugan and the Lady Eagles to their best season as a varsity sport at USI.

In his eight seasons, Stein helped Dugan amass a 159-63 record with four straight NCAA Division II Tournament appearances (1994-95 to 1997-98) and three Great Lakes Valley Conference titles. The Lady Eagles were the NCAA II Tournament finalist and produced the only perfect season in GLVC history (20-0) in 1997.

Since Stein became the assistant coach coordinating recruiting and scouting in 1994-95, Southern Indiana has a record of 119-28, an .809 winning percentage.



A native of Crete, Illinois, Stein was a two-year starter on the Southern Indiana men's basketball team from 1989-91. During his tenure as a player, he helped USI to an appearance in the NCAA Division II South Central Regional in 1989-90 and a win over Division I University of Wisconsin in 1990-91. Before joining USI's team, he played basketball at Parkland College in Champaign, Illinois, and earned an associate degree. Parkland finished as the NJCAA Division II runner-up in 1988 and fourth nationally in 1989.

Stein and his wife Kari have a son Alex and a daughter Mallorie.

## Stein at USI

<u>Year</u>	<u>Record</u>	<u>Coaching Position</u>	<u>Season Highlights</u>
1991-92	8-20	Assistant Coach	
1992-93	15-15	Assistant Coach	
1993-94	17-10	Assistant Coach	
1994-95	22-5	Assistant Coach	<b>GLVC Champions;</b> NCAA II Tournament
1995-96	22-7	Assistant Coach	NCAA II Tournament
1996-97	30-2	Assistant Coach	<b>GLVC Champions;</b> <b>NCAA II Tournament Finalist</b>
1997-98	26-2	Assistant Coach	<b>GLVC Regular Season and</b> <b>Tournament Champions;</b> NCAA II Tournament
1998-99	19-12	Assistant Coach	GLVC Tournament; Disney's Division II Tip-Off Classic
1990-00	15-12	<b>Head Coach</b>	Set USI record for winning percentage by a rookie head coach; GLVC Tournament
<b>9 seasons</b>	<b>174-85</b>	<b>8 seasons as Assistant Coach; 1 season as Head Coach;</b>	<b>1 NCAA II Elite Eight appearance; 4 NCAA II</b> <b>Tournament appearances; 3 GLVC Championships;</b> <b>and 3 GLVC Tournament appearances</b>

## Assistant Coach

### LEANN FREELAND



Assistant Coach LeAnn Freeland begins her second season on the Lady Eagles bench.

A native of Sims, Illinois, Freeland assists with recruiting, on-the-court coaching, game scouting, and individual player assessments. She has recently completed her master's degree at USI in elementary education.

Freeland, a 1998 USI graduate with a bachelor's degree in elementary education, spent two years in the Warrick County (Indiana) School Corporation.

As a coach, Freeland had an overall record of 26-3, leading the Castle High School freshman team to a 13-1 record in 1997-98 and Castle Junior High School's eighth grade team to a 13-2 record in 1998-99.

In her four year career at USI, Freeland was a three-time Women's Basketball Coaches Association/Kodak All-American and a two-time GTE/College Sports Information Directors Academic All-American. She holds the USI career records for scoring (2,269 points), rebounds (961), field goals made (887), and free throws made (738).

The Eagles were 91-24 (.791) during Freeland's four years as a player, including an appearance in the 1997 NCAA Division II Tournament Finals, three NCAA II Tournament berths, and two GLVC titles.

## Assistant Coach

### RANDA GATLING



Randa Gatling returns for her second season as assistant coach for Rick Stein.

A 1999 USI graduate with a bachelor's degree in social work, she works with victims of domestic violence in the YWCA shelter. She coached an Evansville girls' YMCA team in the midnight basketball league and in tournaments at the University of Evansville for two summers.

Gatling served as head coach for the first-ever Central girl's freshman basketball team and was instrumental in its creation in 1998-99. She also coached at Evansville Central High School as an assistant to Daria (Weitekamp) Terrell.

During her playing days at USI, Gatling, a native of Evansville, Indiana, was a member of the 1997 NCAA Division II Tournament Finalist team, 1995, 1996, 1997, 1998 teams which appeared in the NCAA II Tournament, and the 1995, 1997, and 1998 Great Lakes Valley Conference Championship teams. The Eagles were a dominating 100-16 (.862) during Gatling's four years as a player, including an amazing 67-9 (.881) in the GLVC.

# 2000/2001 SCREAMING EAGLES



**Back Row (L-R):** Head Coach Rick Stein, Asst. Coach LeAnn Freeland, Elizabeth Prewett, Michelle Irwin, Casey Nations, Kimberly Witkowiak, Miranda Kettery, Casey Hughes, Erin Wall.

**Front Row (L-R):** Asst. Coach Randa Gatling, Mevett Wooley, Natalie Glaser, Karrie Hochgesang, Jasmine Moore, Bethany Miller, Jessica Stuckman.

## 2000/2001 Roster

NO.	NAME	POS.	CL.	HT.	HOMETOWN (H.S./Previous School)	NO.	NAME	POS.	CL.	HT.	HOMETOWN (H.S./Previous School)
4	Bethany Miller	G	So.	5'8"	Princeton, IN (Princeton)	23	Natalie Glaser	G/F	Sr.	5'9"	Evansville, IN (Mater Dei, St. Louis Univ.)
10	Erin Wall	G	Fr.	5'8"	New Albany, IN (New Albany)	24	Michelle Irwin	F/C	Jr.	6'2"	Louisville, KY (Eastern, Univ. of Louisville)
11	Mevett Wooley	G	Jr.	5'6"	Carbondale, IL (Carbondale, Seminole Community College)	25	Elizabeth Prewett	F/C	Sr.	6'0"	Washington, IN (Washington)
12	Casey Hughes	G/F	Jr.	5'11"	Bicknell, IN (North Knox)	33	Miranda Kettery	F/C	Jr.	6'2"	Alexandria, IN (Alexandria Monroe, Liberty Univ.)
20	Jasmine Moore	G	Jr.	5'6"	Chicago, IL (Morgan Park, John A. Logan College)	44	Casey Nations	F/C	Sr.	6'2"	O'Fallon, IL (O'Fallon, Univ. of New Mexico)
21	Karrie Hochgesang	G/F	Sr.	5'8"	St. Anthony, IN (Forest Park)	51	Kimberly Witkowiak	F/C	Jr.	6'4"	Milwaukee, WI (Vincent, Univ. of Nevada-Reno)
22	Jessica Stuckman	G/F	Fr.	5'10"	Quincy, IL (Notre Dame HS)	<b>Head Coach:</b> Rick Stein (2nd season) <b>Assistant Coach:</b> LeAnn Freeland (2nd season) <b>Assistant Coach:</b> Randa Gatling (2nd season)					

# Meet the 2000-2001 SCREAMING EAGLES

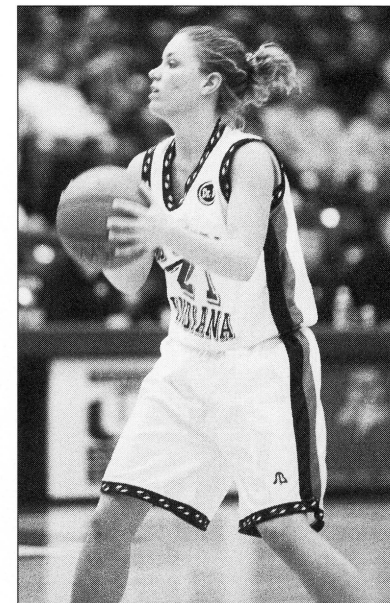


**Karrie Hochgesang #21**  
5'8" Senior, Guard/Forward  
St. Anthony, Indiana  
MAJOR: Biology

**1999-2000:** Named GLVC Player of the Week for her efforts versus Spalding University and Kentucky State University, averaging 17.5 points (0.85 points per minute of action)... named Academic All-GLVC as a junior...averaged a USI career-high 4.6 ppg and 1.8 rpg... had a career-high 20 points against Spalding and four rebounds in three different contests. **1998-99:** Named Academic All-GLVC...made 25 appearances off the bench for the Lady Eagles as a sophomore, averaging 1.3 ppg...had a season-high four points in three different contests. **TRANSFER:** Played in 26 games for the University of Indianapolis in 1997-98... averaged 7.5 ppg and 2.3 rpg...had a season-high 17 points against Kentucky State University and Indiana University/Purdue University Ft. Wayne...had a season-high eight rebounds against the University of Missouri-St. Louis. **HIGH SCHOOL:** Three-year letter winner in basketball at Forest Park High School... also lettered in cross country and track...led the team in free throw percentage and steals as a senior at FPHS. **PERSONAL:** Born July 22, 1979.

### Career Statistics

	G/GS	FGM/FGA	PCT.	3FGM/FGA	PCT.	FTM/FTA	PCT.	REB.	AVG.	AST.	STL.	BLK.	TP.	AVG.	MIN.
98-99	25/0	12/39	.308	3/19	.158	5/14	.357	13	0.5	12	9	0	32	1.3	784
99-00	27/2	39/92	.424	8/32	.250	37/55	.673	48	1.8	16	14	2	123	4.6	330
TOT.	52/2	51/131	.389	11/51	.216	42/69	.609	61	1.2	28	23	2	155	3.0	

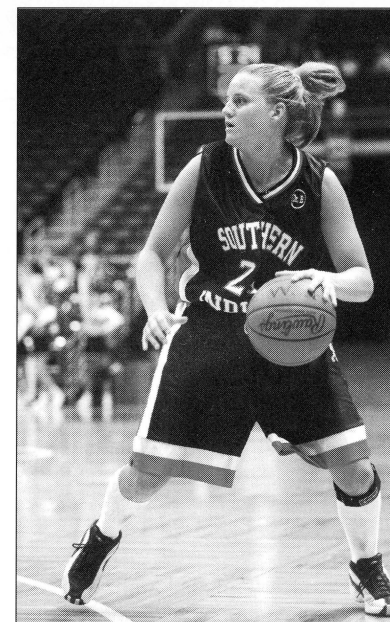


**Natalie Glaser #23**  
5'9" Senior, Guard/Forward  
Evansville, Indiana  
MAJOR: Communications

**1999-2000:** Moved into USI's top 20 all-time in scoring with 591 points in two seasons...was second on the team in scoring with 12.2 ppg, in assists with 2.9 per game, and 28 three-point field goals...ranked 20th in the GLVC in scoring...had a season-high 22 points against Saint Joseph's College and eight rebounds against nationally-ranked Northern Kentucky University...named Academic All-GLVC. **1998-99:** Named Academic All-GLVC...became a force for the Lady Eagles late in the season, despite missing three games with an ankle injury...averaged 13.4 ppg in her final 13 games of 1998-99...averaged 9.4 ppg and 4.4 rpg in 28 games for the Lady Eagles as a sophomore...had a career-high 27 points against Saint Joseph's College, eight rebounds against Southern Illinois University Edwardsville, and seven assists against Lewis University...averaged 10.9 ppg and 4.7 rpg in GLVC contests. **TRANSFER:** Transferred to USI from St. Louis University...played in 23 games and averaged 2.3 ppg and 1.3 rpg with a season high of 15 points and seven rebounds against Chicago State University. **HIGH SCHOOL:** Graduated from Mater Dei High School in Evansville...named the Southern Indiana Player of the Year during her junior season and the Southern Indiana Athletic Conference (SIAC) Player of the Year as a junior and senior...averaged 19.2 ppg, 10.1 rpg, and 4.1 assists as a senior. **PERSONAL:** Born April 8, 1978...enjoys listening to music and swimming.

### Career Statistics

	G/GS	FGM/FGA	PCT.	3FGM/FGA	PCT.	FTM/FTA	PCT.	REB.	AVG.	AST.	STL.	BLK.	TP.	AVG.	MIN.
98-99	28/14	88/231	.381	14/49	.286	72/110	.655	124	4.4	69	27	7	262	9.4	784
99-00	27/27	117/303	.386	28/69	.406	67/87	.770	109	4.0	77	42	13	329	12.2	841
TOT.	55/41	205/534	.384	42/118	.356	139/197	.706	233	4.2	146	69	20	591	10.7	



# Meet the 2000-2001 SCREAMING EAGLES

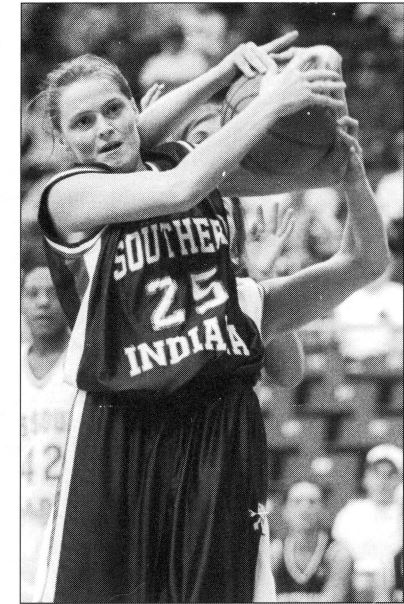


**Elizabeth Prewett #25**  
6'0" Senior, Forward/Center  
Washington, Indiana  
MAJOR: Biology

**1999-2000:** Joined the team during the season after playing volleyball in the fall for USI...played in 16 contests, started nine...averaged a career-high 8.0 ppg and a team-leading 7.1 rpg...had a career-high 18 points and 11 rebounds against the University of Indianapolis...named Academic All-GLVC for a third straight season. **1998-99:** Named Academic All-GLVC as a sophomore...played in all 31 games as a sophomore...averaged 4.6 ppg and 4.4 rebounds...tied a season-high with 15 points and 10 rebounds against the University of Wisconsin-Parkside. **1997-98:** Played in 23 games as a freshman and averaged 3.7 ppg and 2.1 rpg... had a season-high 15 points against Wayne State University and 10 rebounds against Gannon University. **HIGH SCHOOL:** Lettered in basketball, softball, and volleyball at Washington High School... averaged 15.5 ppg and 10.0 rpg as a senior...named All-Conference and to the *Evansville Courier* All-Southwest Indiana team as a junior and senior...selected by the Hoosier Basketball Coaches Association for the Indiana All-Star Team in 1997...led WHS in rebounds and blocked shots in 1996 and 1997...voted onto the sectional and regional All-Tournament teams during her final two seasons at WHS...member of the WHS team which won the Big 8 Conference between 1994 and 1997 and sectional and regional championships in 1997. **PERSONAL:** Born October 8, 1978...hobby is reading...attends USI on a Presidential Scholarship...was valedictorian of her high school graduating class.

### Career Statistics

	G/GS	FGM/FGA	PCT.	3FGM/FGA	PCT.	FTM/FTA	PCT.	REB.	AVG.	AST.	STL.	BLK.	TP.	AVG.	MIN.
97-98	23/0	32/69	.464	0/0	.000	22/37	.595	48	2.1	11	18	3	86	3.7	225
98-99	31/4	58/144	.403	0/0	.000	27/53	.509	135	4.4	21	27	10	143	4.6	471
99-00	16/9	40/110	.364	0/0	.000	48/61	.787	113	7.1	24	14	13	128	8.0	22
Tot.	70/13	130/313	.415	0/0	.000	97/151	.642	296	4.2	56	59	26	357	5.1	

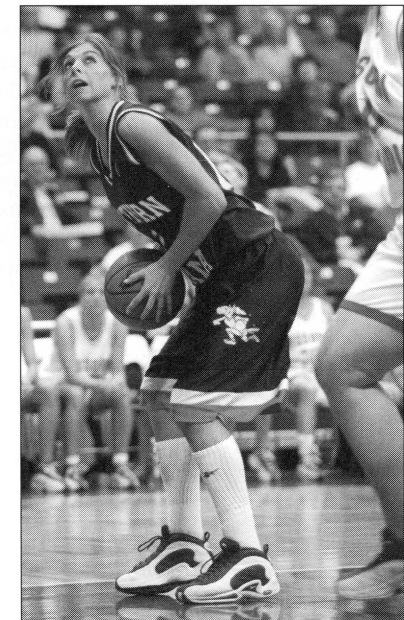


**Casey Hughes #12**  
5'11" Junior, Guard/Forward  
Bicknell, Indiana  
MAJOR: Elementary Education

**1999-2000:** Named honorable mention All-GLVC as a sophomore...led the team in scoring with 13.4 ppg and was third on the team with 5.1 rpg...also led the team by hitting 80 percent from the line (60-75)... moved into USI's top 20 all-time with 720 career points in two seasons...had a career-high 14 rebounds at home against the University of Wisconsin-Parkside...had a season-high 22 points against Saint Joseph's College. **1998-99:** Named second team All-GLVC, one of two freshmen named to the two league teams... led the Lady Eagles in scoring as a freshman, averaging 16.0 ppg, second in rebounding with 6.0 rpg, and 62 steals...ranked 12th in scoring and 16th in rebounding in the GLVC...played in 30 of 31 contests, started 28, and averaged 27.6 minutes per game...had a season-high 29 points against the University of Missouri-St. Louis and 12 rebounds against Bellarmine College...scored in double figures 25 times as a freshman...third on the team with 32 three-point field goals. **HIGH SCHOOL:** Averaged 22.8 ppg, 7.0 rpg, 3.7 assists, and 3.4 steals per game as a senior at North Knox High School...named first team All-State, Blue Chip All-Conference, All-Regional Team, sectional Most Valuable Player, Vincennes Sun-Commercial All-Area and Player of the Year, and *Evansville Courier* first team All-Southwestern Indiana...also named a first team All-Star by Hoosier Basketball Magazine. **PERSONAL:** Born June 21, 1980...enjoys softball and swimming.

### Career Statistics

	G/GS	FGM/FGA	PCT.	3FGM/FGA	PCT.	FTM/FTA	PCT.	REB.	AVG.	AST.	STL.	BLK.	TP.	AVG.	MIN.
98-99	30/28	172/361	.476	32/96	.333	103/148	.696	181	6.0	50	62	13	479	16.0	828
99-00	18/9	88/194	.454	5/20	.250	60/75	.800	91	5.1	18	26	14	241	13.4	463
TOT.	48/37	260/555	.468	37/116	.319	163/223	.731	272	5.7	68	88	27	720	15.0	



# Meet the 2000-2001 SCREAMING EAGLES

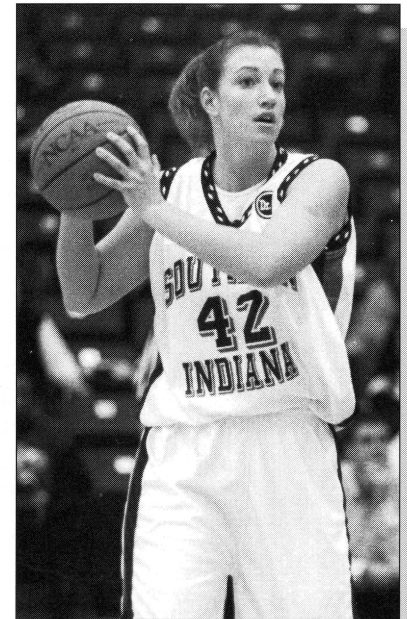


**Michelle Irwin #24**  
6'2" Junior, Forward/Center  
Louisville, Kentucky  
MAJOR: Marketing

**1999-2000:** Battled back from early-season ankle injuries to play in 20 games as a sophomore...averaged 3.0 ppg and 3.5 rpg...had a season-high nine points against Southern Illinois University Edwardsville and eight rebounds against nationally-ranked Northern Kentucky University...named Academic All-GLVC. **TRANSFER:** Transferred to USI from the University of Louisville...saw limited action in 12 contests, scoring three points and grabbing five rebounds. **HIGH SCHOOL:** Graduated from Eastern High School in Louisville...collected letters in basketball, softball, track, and volleyball...earned honorable mention All-State honors as a senior after averaging 16.0 ppg, 11.0 rpg, 2.0 steals, and 2.0 assists per game...had a career-high 23 points and 19 rebounds against Central Hardin High School...named All-Seventh Region as a senior and All-28th District as a junior and senior. **PERSONAL:** Born November 24, 1979.

### Career Statistics

	G/GS	FGM/FGA	.PCT	3FGM/FGA	.PCT	FTM/FTA	.PCT	REB.	AVG.	AST.	STL.	BLK.	TP.	AVG.	MIN.
99-00	0/2	18/75	.240	0/0	.000	25/46	.543	70	3.5	13	2	17	61	3.0	305

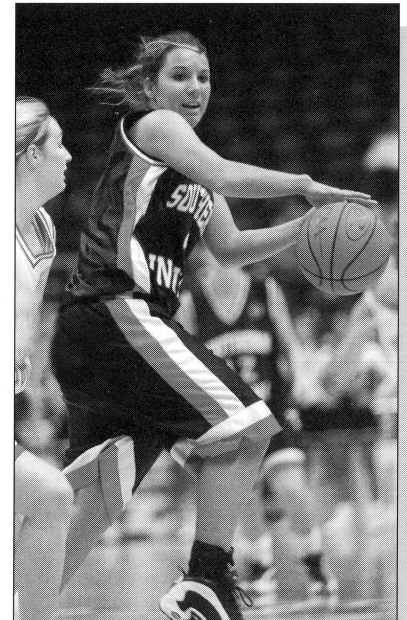


**Bethany Miller #4**  
5'8" Sophomore, Guard  
Princeton, Indiana  
MAJOR: Marketing

**1999-2000:** Overcame injuries and illness at different points during the season to play in all 27 games and start the last 15 at the point guard position ...led the team with 3.0 assists per contest and tied for third with 1.4 steals per game...averaged 5.1 ppg...had a season-high 16 points against the University of Wisconsin-Parkside and 10 assists and eight rebounds against Saint Joseph's College...named Academic All-GLVC as a freshman. **HIGH SCHOOL:** Earned letters in basketball, cross country, golf, and track at Princeton Community High School...became the PCHS career leader with 1,322 points and 364 assists...averaged 21.6 ppg, 8.7 rebounds, 5.3 assists, and 5.3 steals as a senior...was a starter on the PCHS team which advanced to the Indiana High School Final Four in 1996. **PERSONAL:** Born August 17, 1981...enjoys rollerblading and lifting weights.

### Career Statistics

	G/GS	FGM/FGA	.PCT	3FGM/FGA	.PCT	FTM/FTA	.PCT	REB.	AVG.	AST.	STL.	BLK.	TP.	AVG.	MIN.
99-00	27/15	45/112	.402	3/16	.188	46/67	.687	74	2.7	80	38	2	139	5.1	578



# Meet the 2000-2001 **NEWCOMERS**



**Casey Nations #44**  
6'2" Senior, Forward/Center  
O'Fallon, Illinois  
MAJOR: Management

**TRANSFER:** Transferred to USI from the University of New Mexico where she averaged 1.0 ppg and 1.1 rebounds in seven contests as a junior. **COLLEGE:** Played junior college basketball at Belleville Area College in Illinois...averaged 11.0 ppg, 9.5 rpg, four blocks, and three steals as a sophomore for the BAC Lady Dutchmen...named All-Great Rivers Athletic Conference in 1998 and 1999 and All-Region in 1999. **HIGH SCHOOL:** Played basketball and softball at O'Fallon Township High School. **PERSONAL:** Born July 23, 1979 in Camaro, California...hobby is scuba diving.

**TRANSFER:** Transferred to USI from Seminole Community College in Sanford, Florida... helped SCC to a 27-6 record and a 14th national ranking in 1999-2000...was named Florida Community College Activities Association All-Tournament and All-Mid Florida Conference... averaged 13.0 points, 4.5 assists, two rebounds, and two steals...had a season-high 18 points against Broward Community College and East Central Missouri College. **HIGH SCHOOL:** Lettered in basketball and track at Carbondale High School. **PERSONAL:** Born March 28, 1979...enjoys using the Internet.



**Mevett Wooley #11**  
5'6" Junior, Guard  
Carbondale, Illinois  
MAJOR: Physical Education

**TRANSFER:** Transferred to USI from John A. Logan College where she led the Lady Vols to the Region XXIV finals and finished with a 23-10 record...averaged 11.2 ppg 2.7 rpg, 3.1 assists, and 2.2 steals as a sophomore...named to the Region XXIV All-Tournament team in 1999-2000. **HIGH SCHOOL:** Lettered in basketball at Morgan Park High School...named the Chicago Defender of the Year as a senior. **PERSONAL:** Born April 27, 1980.

**TRANSFER:** Transferred to USI after two seasons at Liberty University...averaged 1.8 ppg and 1.5 rpg last season for Liberty which finished with 23-8 record and an NCAA I Tournament appearance. **HIGH SCHOOL:** Graduated from Alexandria Monroe High School...named All-Conference, All-County four consecutive seasons...also named honorable mention All-State and All-Sectional as a senior...holds school records for most rebounds in a game and career. **PERSONAL:** Born March 10, 1980...enjoys reading.



**Miranda Kettery #33**  
6'2" Junior, Center  
Alexandria, Indiana  
MAJOR: Psychology



**Jasmine Moore #20**  
5'6" Junior, Guard  
Chicago, Illinois  
MAJOR: Education

# Meet the 2000-2001 **NEWCOMERS**



## **Kimberly Witkowiak #51**

**6'4" Junior, Forward/Center**

**Milwaukee, Wisconsin**

**MAJOR: Elementary Education**

**TRANSFER:** Played two seasons at the University of Nevada-Reno...averaged 1.2 ppg and 1.3 rpg for the Wolfpack, which won the Eastern Division of the Big West Conference in 1999-2000.

**HIGH SCHOOL:** Earned eight letters competing in basketball, volleyball, and track and field at Milwaukee Vincent High School...helped MVHS to the Blue Division Championship in 1997-98.

**PERSONAL:** Born March 26, 1980...enjoys volleyball, bowling, art, animals, and listening to music.



## **Jessica Stuckman #22**

**5'10" Freshman, Guard/Forward**

**Quincy, Illinois**

**MAJOR: Undecided**

**HIGH SCHOOL:** Finished her career at Notre Dame High School as the second all-time leading scorer with 1,296 points...averaged 17.3 ppg, 9.1 rpg, 4.0 steals, and 3.0 assists as a senior at NDHS...was named All-State by the Illinois Basketball Coaches Association (first team) and the Associated Press (third team)...helped lead NDHS to a regional championship in 1999-2000 and to an appearance in the Illinois Class A Elite Eight...named first team All-State and second team All-State as a junior and senior in volleyball and first team All-State in soccer as a senior...helped lead NDHS to the volleyball state championships in 1998 and the state finals in 1999. **PERSONAL:** Born October 5, 1982.



## **Erin Wall #10**

**5'8" Freshman, Guard**

**New Albany, Indiana**

**MAJOR: Undecided**

**HIGH SCHOOL:** Graduated from New Albany High School...averaged 9.1 ppg, 2.9 rebounds, 3.3 assists, and 1.9 steals per game as a senior...helped lead NAHS to a 22-1 overall record...named to the All-Hoosier Hills Conference first team and was selected to the Hoosier Basketball Coaches Association All-Star team...holds the single-season record for free throw percentage (83 percent).

**PERSONAL:** Born April 15, 1982.



# 2000-2001 Screaming Eagles **OPPONENTS**

*Saturday, Nov. 18 at the PAC*  
**INDIANA INSTITUTE OF TECHNOLOGY**  
 Location: Fort Wayne, IN  
 Enrollment: 510  
 Nickname: Warriors  
 Affiliation: NAIA Division II  
 Conference: Wolverine-Hoosier  
 Head Coach: Gary Cobb  
 1999-00 Record: 12-18

*Saturday, Nov. 25 at the PAC*  
**PURDUE UNIVERSITY-CALUMET**  
 Location: Hammond, IN  
 Enrollment: 10,000  
 Nickname: Lady Lakers  
 Affiliation: NAIA Division I  
 Conference: Chicagoland Collegiate Athletic  
 Head Coach: Dennis Smith  
 1999-00 Record: 13-16

*Thursday, Nov. 30 at the PAC*  
*Saturday, Feb. 3 at Ft. Wayne, IN*  
**INDIANA UNIVERSITY/PURDUE UNIVERSITY AT FT. WAYNE**  
 Location: Ft. Wayne, IN  
 Enrollment: 11,500  
 Nickname: Mastodons  
 Head Coach: Karl Smesko  
 1999-00 Record: 13-14  
 1999-00 GLVC Record/Finish: 9-11/t-7th  
 GLVC Tournament Finish: Lost in First Round

*Saturday, Dec. 2 at the PAC*  
*Thursday, Feb. 1 at Rensselaer, IN*  
**SAINT JOSEPH'S COLLEGE**  
 Location: Rensselaer, IN  
 Enrollment: 1,800  
 Affiliation: NCAA II  
 Nickname: Lady Pumas  
 Head Coach: Lynn Plett  
 1999-00 Record: 6-20  
 1999-00 GLVC Record/Finish: 4-16/11th

*Saturday, Dec. 9 at the PAC*  
*Tuesday, Feb. 13 at Edwardsville, IL*  
**SOUTHERN ILLINOIS UNIVERSITY EDWARDSVILLE**  
 Location: Edwardsville, IL  
 Enrollment: 11,000  
 Nickname: Lady Cougars  
 Affiliation: NCAA II  
 Head Coach: Wendy Hedberg  
 1999-00 Record: 18-9 (NCAA Tournament)  
 1999-00 GLVC Record/Finish: 13-7/4th  
 GLVC Tournament Finish: Lost in first round

*Saturday, Dec. 16 at the PAC*  
**OAKLAND CITY UNIVERSITY**  
 Location: Oakland City, IN  
 Enrollment: 1,107  
 Nickname: Mighty Oaks  
 Affiliation: NCAA II  
 Conference: Independent  
 Head Coach: Dalonda Hayes  
 1998-99 Record: 15-15

*Northwest Missouri State University*  
*Disney Classic*  
*Hosted by NMSU at Walt Disney World in Orlando, Florida*

*Monday, Dec. 19 at Orlando, FL*  
**UNIVERSITY OF NORTHERN COLORADO**  
 Location: Greeley, CO  
 Enrollment: 10,500  
 Nickname: Bears  
 Affiliation: NCAA II  
 Conference: North Central  
 Head Coach: Erica Ledy  
 1999-00 Record: 20-9 (NCAA Tournament)

*Tuesday, Dec. 20 at Orlando, FL*  
**NORTHWEST MISSOURI STATE UNIVERSITY**  
 Location: Maryville, MO  
 Enrollment: 6,200  
 Nickname: Bearcats  
 Affiliation: NCAA II  
 Conference: MIAA  
 Head Coach: Gene Steinmeyer  
 1999-00 Record: 4-22

*Friday, Dec. 29 at the PAC*  
**FERRIS STATE UNIVERSITY**  
 Location: Big Rapids, MI  
 Enrollment: 9,651  
 Nickname: Lady Bulldogs  
 Affiliation: NCAA II  
 Conference: GLIAC  
 Head Coach: Tracey Fisk  
 1999-00 Record: 22-7 (NCAA Tournament)

*Wednesday, Jan. 3 at Indianapolis, IN*  
**UNIVERSITY OF INDIANAPOLIS**  
 Location: Indianapolis, IN  
 Enrollment: 4,000  
 Nickname: Lady Greyhounds  
 Affiliation: NCAA II  
 Head Coach: Teri Moren  
 1999-00 Record: 15-12  
 1999-00 GLVC Record/Finish: 9-11/t-7th  
 GLVC Tournament Finish: Lost in Finals

*Saturday, Jan. 6 at the PAC*  
**NORTHERN KENTUCKY UNIVERSITY**  
 Location: Highland Heights, KY  
 Enrollment: 11,600  
 Nickname: Norse  
 Affiliation: NCAA II  
 Head Coach: Nancy Winstel  
 1999-00 Record: 32-2 (NCAA Champions)  
 1999-00 GLVC Record/Finish: 19-1/1st  
 GLVC Tournament Finish: Champions

*Thursday, Jan. 8 at Quincy, IL*  
*Saturday, Feb. 10 at the PAC*  
**QUINCY UNIVERSITY**  
 Location: Quincy, IL  
 Enrollment: 1,175  
 Affiliation: NCAA II  
 Nickname: Lady Hawks  
 Head Coach: Larry Just  
 1999-00 Record: 6-20  
 1999-00 GLVC Record/Finish: 2-18/12th

*Monday, Jan. 15 at St. Louis, MO*  
*Thursday, Feb. 8 at the PAC*  
**UNIVERSITY OF MISSOURI-ST. LOUIS**  
 Location: St. Louis, MO  
 Enrollment: 15,880  
 Nickname: Riverwomen  
 Affiliation: NCAA II  
 Head Coach: Shelly Ethridge  
 1999-00 Record: 18-9 (NCAA Tournament)  
 1999-00 GLVC Record/Finish: 13-7/t-2nd  
 GLVC Tournament Finish: Lost in Semifinals

*Thursday, Jan. 18 at the PAC*  
*Saturday, Feb. 17 at Romeoville, IL*  
**LEWIS UNIVERSITY**  
 Location: Romeoville, IL  
 Enrollment: 4,300  
 Nickname: Flyers  
 Head Coach: Brian Michalak  
 1999-00 Record: 17-10  
 1999-00 GLVC Record/Finish: 14-6/t-2nd  
 GLVC Tournament Finish: Lost in Quarterfinals

*Saturday, Jan. 20 at the PAC*  
*Thursday, Feb. 15 at Kenosha, WI*  
**UNIVERSITY OF WISCONSIN-PARKSIDE**  
 Location: Kenosha, WI  
 Enrollment: 5,500  
 Nickname: Rangers  
 Head Coach: Paulette Stein  
 1999-00 Record: 9-17  
 1999-00 GLVC Record/Finish: 5-15/10th

*Thursday, Jan. 25 at Louisville, KY*  
*Saturday, Feb. 24 at the PAC*  
**BELLARMINE COLLEGE**  
 Location: Louisville, KY  
 Enrollment: 2,300  
 Nickname: Lady Knights  
 Head Coach: David Smith  
 1999-00 Record: 18-10  
 1999-00 GLVC Record/Finish: 12-8/5th  
 GLVC Tournament Finish: Lost in Semifinals

*Saturday, Jan. 27 at Owensboro, KY*  
*Thursday, Feb. 22 at the PAC*  
**KENTUCKY WESLEYAN COLLEGE**  
 Location: Owensboro, KY  
 Enrollment: 800  
 Nickname: Lady Panthers  
 Head Coach: Scott Lewis  
 1999-00 Record: 12-14  
 1999-00 GLVC Record/Finish: 9-11/T-7th



# 1999-2000 STATISTICS & RESULTS

SCREAMING EGLES

Player	GP-GS	MIN-AVG	TOTAL				3 POINT				REBOUNDS				PF-FO	A	TO	BLK	STL	PTS	AVG				
			FG-FGA	PCT	FG-FGA	PCT	FT-FTA	PCT	OFF-DEF	TOT	AVG														
12 Casey Hughes	18	9	463	25.7	88	194	.454	5	20	.250	60	75	.800	33	58	91	5.1	43	1	18	40	14	26	241	13.4
23 Natalie Glaser	27	27	841	31.1	117	303	.386	28	69	.406	67	87	.770	31	78	109	4.0	65	0	77	73	13	42	329	12.2
22 Mindy Gingerich	27	24	839	31.1	100	271	.369	20	63	.317	95	120	.792	45	102	147	5.4	66	2	78	82	24	53	315	11.7
24 Nicole McDaniel	11	10	325	29.5	41	94	.436	3	8	.375	22	32	.688	33	48	81	7.4	34	3	22	24	6	38	107	9.7
20 Jennifer Donner	27	25	681	25.2	90	238	.378	31	79	.392	32	51	.627	38	53	91	3.4	59	4	38	56	1	36	243	9.0
25 Elizabeth Prewett	16	9	422	26.4	40	110	.364	0	0	.000	48	61	.787	52	61	113	7.1	50	4	24	26	13	14	128	8.0
10 Melinda Cunningham	27	10	490	18.1	71	177	.401	6	30	.200	34	45	.756	35	52	87	3.2	41	0	17	51	8	9	182	6.7
4 Bethany Miller	27	15	578	21.4	45	112	.402	3	16	.188	46	67	.687	23	51	74	2.7	66	1	80	57	2	38	139	5.1
21 Karrie Hochgesang	27	2	330	12.2	39	92	.424	8	32	.250	37	55	.673	13	35	48	1.8	37	1	16	33	2	14	123	4.6
42 Michelle Irwiin	20	2	305	15.2	18	75	.240	0	0	.000	25	46	.543	19	51	70	3.5	55	3	13	30	17	2	61	3.0
14 Carlin Long	5	2	80	16.0	6	15	.340	1	5	.200	1	3	.333	1	6	7	1.4	8	0	7	2	0	2	14	2.8
11 Mandy Shaff	16	0	90	5.6	9	26	.346	3	13	.231	3	4	.750	6	6	12	0.8	4	0	5	1	0	3	24	1.5
33 Shavon Sork	4	0	33	8.2	2	6	.333	0	1	.000	1	3	.333	2	3	5	1.2	3	0	3	0	0	1	5	1.2
Team Rebounds														63	67	130									
Southern Indiana	27	5477			666	1713	.389	108	336	.321	471	649	.726	394	671	1065	39.4	531	19	398	476	100	278	1911	70.8
Opponents	27	5475			633	1565	.404	118	317	.372	437	632	.691	382	762	1144	42.4	560		387	620	81	234	1821	67.4

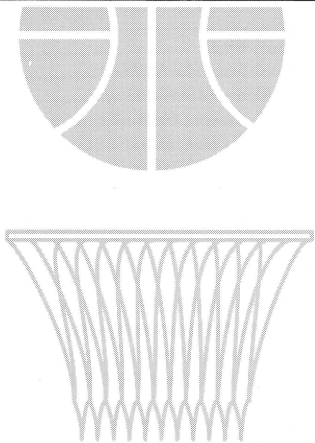
SCORE BY HALVES (and OTs):	1st	2nd	OT1	OT2	OT3	OT4	TOTAL	RECORD:	OVERALL	HOME	AWAY	NEUTRAL
Opponents	900	976	27	8	0	0	1911	ALL GAMES	(15-12)	(7-6)	(7-4)	(1-2)
SOUTHERN INDIANA	824	960	21	16	0	0	1821	CONFERENCE	(10-10)	(4-6)	(6-4)	(0-0)
								NON-CONFERENCE	(5-2)	(3-0)	(1-0)	(1-2)

# 1999-2000 FINAL GLVC RESULTS



## Great Lakes Valley Conference 1999-2000 FINAL Women's Basketball Standings www.siu.edu/ATHLETIC/glvchome.html

	W-L	Pct.	W-L	Pct.	Home	Away	Neut.	Streak
Northern Kentucky	19-1	.950	32-2	.941	15-1	11-1	6-0	W-24
Lewis	14-6	.700	17-10	.630	8-4	9-5	0-1	L-1
Missouri-St. Louis	14-6	.700	19-11	.633	8-5	8-3	3-3	L-1
SIU-Edwardsville	13-7	.650	18-9	.667	9-4	9-4	0-1	L-1
Bellarmine	12-8	.600	18-10	.643	11-2	6-7	1-1	L-1
<b>SOUTHERN INDIANA</b>	<b>10-10</b>	<b>.500</b>	<b>15-12</b>	<b>.556</b>	<b>7-6</b>	<b>7-4</b>	<b>1-2</b>	<b>L-4</b>
Indianapolis	9-11	.450	17-12	.586	9-7	6-4	2-1	L-1
IUPU Ft. Wayne	9-11	.450	13-14	.481	7-7	4-6	2-0	L-1
Kentucky Wesleyan	9-11	.450	12-14	.462	7-6	4-9	0-0	W-1
Wisconsin-Parkside	5-15	.250	9-17	.346	5-7	3-9	1-1	L-1
St. Joseph's	4-16	.200	6-20	.231	4-9	2-10	0-1	L-5
Quincy	2-18	.100	6-24	.231	2-10	4-10	0-0	L-1



## 1999-2000 All-GLVC Teams

### First Team

Player, School	Ht.	Year	Pos.	Hometown
Michelle Cottrell, NKU	5-11	So.	F/C	Florence, KY
Misi Clark, SIUE	5-10	Jr.	G	Paris, IL
Carey Jewell, Lewis	5-4	Sr.	G	Batesville, IN
Tawanda Daniel, UMSL	5-8	Sr.	G	Lilbourn, MO
Angie Hupfer, St. Joseph's	5-11	Sr.	F	Pendleton, IN

### Second Team

Michelle Tuchfarber, NKU	5-8	Jr.	G	Cincinnati, OH
Elizabeth Ramsey, Indianapolis	6-0	Jr.	C	Mt. Vernon, IN
Stephanie Hutchcraft	6-0	So.	F	Louisville, KY
Rae Keith	5-7	Sr.	G	Cincinnati, OH
Yasmina Radmanovich, UWP	6-2	So.	C	Vacaville, CA

### Honorable Mention

Jamie Holderman, IUPU Ft. Wayne; Heather Livingstone, NKU; Rachel Young, Bellarmine; Kellie Harms, Lewis; Sarah Cook, SIUE; **Casey Hughes, USI;** **Mindy Gingerich, USI;** Amanda Wentzel, UMSL; Colleen Sexton, Quincy

### Player-of-the-Year

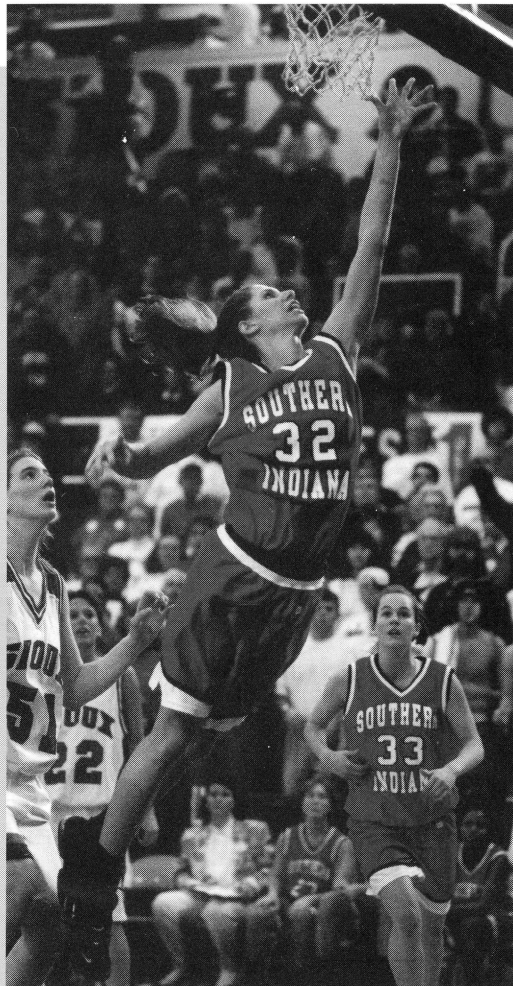
Misi Clark, SIUE and Michelle Cottrell, NKU

### Coach-of-the-Year

Nancy Winstel, Northern Kentucky

### Freshman-of-the-Year

Trish Fleming, IUPU Ft. Wayne



## USI WOMEN'S BASKETBALL ALL-TIME RECORDS

### Career: Leading Scorers

1. LeAnn Freeland (1993-97) . . . . . 2,269
2. Eileen Weber (1994-98) . . . . . 1,847
3. Kathy Lauck (1990-94) . . . . . 1,573
4. Shelly Scott (1987-92) . . . . . 1,414
5. Peggy Witsman (1982-86) . . . . . 1,267
6. Connie VanMeter (1983-87) . . . . . 1,163
7. Deb Pope (1992-96) . . . . . 998
8. Penny Dietz (1985-87) . . . . . 945
9. Holly Billings (1978-81) . . . . . 889
10. Mindy Gingerich (1996-00) . . . . . 843
11. Glenna Bower (1991-94) . . . . . 819
12. Debbie Frank (1983-87) . . . . . 808
13. Jennifer Donner (1996-00) . . . . . 803
14. Adrienne Seitz (1995-99) . . . . . 780
15. Laura Perek (1990-94) . . . . . 776
16. Casey Hughes (1998-Present) . . . . . 720
17. Sheri Kaiser (1990-93) . . . . . 694
18. Debbie Schutte (1975-78) . . . . . 675
19. Jeanette Elkin (1991-94) . . . . . 657
20. Natalie Glaser (1998-Present) . . . . . 591

### Career: Leading Rebounders

1. LeAnn Freeland (1993-97) . . . . . 961
2. Eileen Weber (1994-98) . . . . . 842
3. Kathy Lauck (1990-94) . . . . . 791
4. Shelly Scott (1987-92) . . . . . 745
5. Vicky Branson (1982-86) . . . . . 682
- Debbie Frank (1983-87) . . . . . 682
7. Debbie Schutte (1975-78) . . . . . 600
8. Mary Beaven (1978-81) . . . . . 542
9. Connie VanMeter (1983-87) . . . . . 465
10. Adrienne Seitz (1995-99) . . . . . 460
11. Annette Elkin (1991-94) . . . . . 439
12. Holly Billings (1978-81) . . . . . 425
13. Cathy Tepool (1994-99) . . . . . 415
14. Mindy Gingerich (1996-00) . . . . . 399
15. Becky Braun (1984-86) . . . . . 390
- Sheri Kaiser (1990-93) . . . . . 390

### Career: Leaders in Games Played

1. Adrienne Seitz (1995-99) . . . . . 120
2. Jennifer Donner (1996-00) . . . . . 117
3. Mindy Gingerich (1996-00) . . . . . 116
4. LeAnn Freeland (1993-97) . . . . . 115
- Eileen Weber (1994-98) . . . . . 115

### Career: Most Field Goals Made

1. LeAnn Freeland (1993-97) . . . . . 887
2. Eileen Weber (1994-98) . . . . . 705
3. Kathy Lauck (1990-94) . . . . . 622
4. Shelly Scott (1987-92) . . . . . 504
5. Peggy Witsman (1982-86) . . . . . 496

### Career: Most Field Goals Attempted

1. LeAnn Freeland (1993-97) . . . . . 1,449
2. Eileen Weber (1994-98) . . . . . 1,317
3. Kathy Lauck (1990-94) . . . . . 1,258
4. Peggy Witsman (1982-86) . . . . . 1,245
5. Shelly Scott (1987-92) . . . . . 1,127

### Career: Most Free Throws Made

1. LeAnn Freeland (1993-97) . . . . . 491
2. Shelly Scott (1987-92) . . . . . 385
3. Eileen Weber (1994-98) . . . . . 348
4. Kathy Lauck (1990-94) . . . . . 329
5. Peggy Witsman (1982-86) . . . . . 273

### Career: Most Free Throws Attempted

1. LeAnn Freeland (1993-97) . . . . . 738
2. Shelly Scott (1987-92) . . . . . 494
3. Kathy Lauck (1990-94) . . . . . 484
4. Eileen Weber (1994-98) . . . . . 474
5. Peggy Witsman (1982-86) . . . . . 387

### Career: Most Three-point Goals Made

1. Deb Pope (1992-96) . . . . . 184\*
  2. Jennifer Donner (1996-00) . . . . . 129
  3. Glenna Bower (1991-94) . . . . . 112
  4. Laura Perek (1990-94) . . . . . 94
  5. Missy Hart (1991-95) . . . . . 90
- \*GLVC Career Record with 122 in conference play.

### Career: Most Three-point Field Goals Attempted

1. Deb Pope (1992-96) . . . . . 416\*
2. Jennifer Donner (1996-00) . . . . . 334
3. Glenna Bower (1991-94) . . . . . 326
4. Missy Hart (1991-95) . . . . . 287
5. Laura Perek (1990-94) . . . . . 273

\*GLVC Career Record with 284 in conferenceplay.

### Career: Most Assists

1. Adrienne Seitz (1995-99) . . . . . 565
2. Connie VanMeter (1983-87) . . . . . 353
3. Sharon Agee (1986-89) . . . . . 316
4. Daria Weitekamp (1994-96) . . . . . 291
5. Lisa Wells (1992-94) . . . . . 247

### Career: Most Steals

1. Adrienne Seitz (1995-99) . . . . . 198
2. Eileen Weber (1994-98) . . . . . 188
3. LeAnn Freeland (1993-97) . . . . . 167
4. Laura Perek (1990-94) . . . . . 155
5. Mindy Gingerich (1996-00) . . . . . 152

## GAME & SEASON RECORD BOOK

### Most Points

- GAME-(50) LeAnn Freeland vs. IPFW, Jan. 28, 1995  
 SEASON-(674) LeAnn Freeland, 1996-97

### Most Field Goals Made

- GAME-(20) LeAnn Freeland vs. Ashland, Jan. 26, 1995  
 SEASON-(265) LeAnn Freeland, 1994-95

### Most Field Goals Attempted

- GAME-(28) Holly Billings vs. Columbia College, 1979-80  
 SEASON-(439) Penny Dietz, 1986-87

### Most Free Throws Made

- GAME-(19) Shelly Scott vs. Indianapolis, 1988-89  
 SEASON-(196) Shelly Scott, 1988-89

### Most Consecutive Free Throws

- (31) Kathy Lauck, 1993-94

### Most Three-point Field Goals Made

- GAME-(8) Deb Pope vs. Kentucky State, Feb. 18, 1995\*  
 SEASON-(76) Deb Pope, 1995-96

\*Tied the GLVC record

### Most Three-point Field Goals Attempted

- GAME-(14) Deb Pope vs. Kentucky State, Feb. 18, 1995; vs. Lewis, Feb. 4, 1995  
 SEASON-(188) Deb Pope, 1995-96



### Most Rebounds

GAME-(21) Debbie Schutte vs. Oakland City 1977; (21) Jill Padgett vs. Kentucky Wesleyan 1977  
SEASON-(281) Shelly Scott, 1988-89

### Most Steals

GAME-(10) Angie Cacello vs. Kentucky Wesleyan, Feb. 22, 1997  
SEASON-(101) Connie VanMeter, 1986-87

### Most Assists

GAME-(14) Adrienn Seitz vs. SIU Edwardsville, Feb. 9, 1999  
SEASON-(194) Adrienne Seitz, 1998-99

### Most Blocks

GAME-(10) LeAnn Freeland vs. Indianapolis, Dec. 29, 1994  
SEASON-(69) LeAnn Freeland, 1994-95  
CAREER-(194) LeAnn Freeland, 1993-97

### Best Field Goal Percentage (Minimum of 10 attempts)

GAME-(.933, 14-15) Eileen Weber vs. Kentucky Wesleyan, Feb. 17, 1998  
SEASON-(.652, 259-397) LeAnn Freeland, 1996-97  
CAREER-(.612, 887-1449) LeAnn Freeland, 1993-97 (Min. 300 attempts)

### Best Free Throw Percentage (Minimum of 10 attempts)

GAME-(1.000, 14-14) Shelly Scott vs. St. Joseph's, 1988-89  
SEASON-(.855, 59-69) Cindy Huckabee, 1980-81  
CAREER-(.779, 385-494) Shelly Scott, 1987-92 (Min. 200 Attempts)

### Best Three-point Field Goal Percentage (Minimum of 5 attempts)

GAME-(.857, 6-7) Deb Pope vs. Bellarmine, 1-21-95  
SEASON-(.507, 74-146) Deb Pope, 1994-95 (Min. 40 Att.)  
CAREER-(.442, 184-416) Deb Pope, 1992-96 (Min. 90 Att.)

### Highest Rebounding Average

SEASON-(15.1) Debbie Schutte, 1976-77  
CAREER-(14.3) Debbie Schutte, 1975-77

### Highest Scoring Average

SEASON-(24.4) LeAnn Freeland, 1994-95  
CAREER-(19.7) LeAnn Freeland, 1993-97

## TEAM RECORDS

### Most Points

GAME-(116) vs. Kentucky State, Feb. 13, 1993  
GAME/BOTH TEAMS-(205) USI (99) vs. Bellarmine (106), March 5, 1992  
SEASON-(2844) 1996-97

### Most Field Goals Made

GAME-(48) vs. Kentucky State, Feb. 13, 1993  
SEASON-(1069) 1996-97

### Most Field Goals Attempted:

GAME-(100) vs. Kentucky State, Feb. 13, 1993  
SEASON-(2196) 1996-97

### Most Free Throws Made

GAME-(38) vs. Alaska-Anchorage, Dec. 11, 1992; (38) vs. Indianapolis, Dec. 5, 1998  
SEASON-(497) 1992-93

### Most Free Throws Attempted

GAME-(50) vs. Alaska-Anchorage, Dec. 11, 1993; (50) vs. Indianapolis, Dec. 5, 1998  
SEASON-(733) 1992-93

### Most Three-point Field Goals Made

GAME-(14) VS. IUPUI Indianapolis, Dec. 4, 1992  
SEASON-(217) 1992-93

### Most Three-point Field Goals Attempted

GAME-(30) vs. Indianapolis, Jan. 30, 1993  
SEASON-(623) 1992-93

### Best Field Goal Percentage

GAME-(.609, 42-69) vs. St. Joseph's Jan. 11, 1997  
SEASON-(.487, 1069-2196) 1996-97

### Best Free Throw Percentage (Minimum of 10 attempts)

GAME-(1.000, 13-13) vs. Kentucky Wesleyan, Feb. 17, 1990  
SEASON-(.705, 488-692) 1995-96

### Best Three-Point Percentage (Minimum of 10 attempts)

GAME-(.667, 8-12) vs. Missouri-St. Louis, Feb. 13, 1999  
SEASON-(.384, 175-456) 1994-95

### Most Rebounds

GAME-(67) vs. Kentucky State, Feb. 13, 1993  
SEASON-(1,375) 1992-93

### Most Steals

GAME-(29) vs. Tri-State, Dec. 29, 1998 & vs. St. Francis, Dec. 7, 1996  
SEASON-(468) vs. 1996-97

### Most Blocks

GAME-(16) vs. Bellarmine, Feb. 22, 1996  
SEASON-(157) 1995-96

### Miscellaneous

WIDEST MARGIN OF VICTORY: (95) vs. St. Mary's (113-18), 1978-79  
MOST VICTORIES IN A SEASON: (30) 1996-97  
MOST VICTORIES IN THE GLVC: (20) 1996-97 (Second year with a 20 game schedule)  
LONGEST WINNING STREAK: (29) 1996-97  
LONGEST WINNING STREAK IN A SEASON: (29) 1996-97  
BEST RECORD: (30-2, .938) 1996-97  
HIGHEST SCORING AVERAGE: (88.9) 1996-97 (Best in the nation)

## INDIVIDUAL HONORS

### All-Americans

*Kathy Lauck*

- Kodak/WBCA 1994
- Division II Bulletin (First Team) 1994
- USA Today/Don Hansen's Weekly Basketball Gazette (Second Team) 1994
- GLVC Player of the Year, 1994
- All-GLVC 1993 (Second Team), 1994 (First Team)

(Continued on page 20)

## INDIVIDUAL HONORS

### LeAnn Freeland

- Kodak/WBCA 1995, 1996, 1997
- Division II Bulletin 1997
- College Sports All-American, 1995, 1996
- College Sports National Player of the Year, 1995
- GLVC Player of the Year, 1995, 1997
- All-GLVC 1995 (First Team), 1996 (First Team), 1997 (First Team)
- GTE-CoSIDA Academic All-American 1996 (Third Team), 1997 (First Team)
- Academic All-GLVC, 1995, 1996, 1997

### Eileen Weber

- Kodak/WBCA All-American; Daktronics All-American (Second Team), 1998
- Kodak/WBCA 1997 (Honorable Mention)
- Division II Bulletin 1997 (Honorable Mention); 1998 (Second Team)
- GLVC Player of the Year, 1998
- GLVC Newcomer of the Year, 1995
- All-GLVC 1995 (Second Team), 1996 (Second Team), 1997 (First Team); 1998 (First Team)
- Academic All-GLVC 1996, 1997, 1998

### All-IAIAW District

- Holly Billings—1981 Southern District All-Tournament Team
- Cindy Huckabee—1981 Southern District All-Tournament Team

### All-IAIAW State

- Holly Billings—1981 All-State Tournament Team
- Lisa Krieg—1982 All-State Tournament Team

### State Awards

- Holly Billings—1981 Eleanor St. John Award (presented to the top seven female athletes in Indiana)

### NCAA Division II Players of the Year

- LeAnn Freeland—1995 (College Sports Magazine)

### Great Lakes Valley Conference Players of the Year

- Kathy Lauck—1994
- LeAnn Freeland—1995, 1997
- Eileen Weber—1998

### Great Lakes Valley Conference Newcomers of the Year

- Eileen Weber—1995

### Great Lakes Valley Conference Players of the Week

- Connie VanMeter—1984
- Kim Pearson—1988
- Shelly Scott—1988-89 (Twice)
- Kathy Lauck—1992, 1994 (Twice)
- Glenna Bower—1992

### Missy Hart—1995

- LeAnn Freeland—1995 (Three Times), 1996 (Five Times), 1997 (Six Times)
- Eileen Weber—1995, 1996, 1997
- Karrie Hochgesang—2000
- Nicole McDaniel—2000

### All-Great Lakes Valley Conference Team

- Peggy Witsman—1983-84 (Second Team)
- Penny Dietz—1985-86 (Second Team), 1986-87 (Second Team)
- Shelly Scott—1988-89 (Second Team) 1989-90 (Honorable Mention)
- Kathy Lauck—1991-92 (Honorable Mention), 1992-93 (Second Team), 1993-94 (First Team)
- Glenna Bower—1991-92 (Honorable Mention)
- Charlene Tinner—1992-93 (Honorable Mention)
- Lisa Wells—1992-93 (Honorable Mention), 1993-94 (Honorable Mention)
- Laura Perek—1992-94 (Honorable Mention)
- LeAnn Freeland—1994-95 (First Team), 1995-96 (First Team), 1996-97 (First Team)
- Eileen Weber—1994-95 (Second Team), 1995-96 (Second Team), 1996-97 (First Team); 1997-98 (First Team)
- Deb Pope—1994-95 (Honorable Mention), 1995-96 (Second Team)
- Casey Hughes—1998-99 (Second Team), 1999-00 (Honorable Mention)
- Adrienne Seitz—1998-99 (Honorable Mention)
- Stosha DeShaizer—1998-99 (Honorable Mention)
- Mindy Gingerich—1999-00 (Honorable Mention)

### Great Lakes Valley Conference Coach of the Year

- Chance Dugan, 1997

### WBCA District IV Coach of the Year

- Chance Dugan 1997 (Finalist for National Coach of the Year)

### Great Lakes Valley Conference All-Academic Team

- Jane Weaver—1988\*
- Shelly Scott—1989, 1992
- Shelly Kramer—1989
- Amy McCord—1990
- Laura Perek—1992, 1993, 1994
- Sharie Sweet—1992
- Sharon Gentry—1992
- Sheri Kaiser—1992, 1993
- Danielle Slaughter—1993, 1994

### Jeanette Elkin—1994

- Daria Weitekamp—1996
- LeAnn Freeland—1995, 1996\*\*, 1997\*\*
- Eileen Weber—1996, 1997, 1998
- Adrienne Seitz—1996
- Mindy Gingerich—1997, 1998
- Darci Redenbaugh—1997, 1998
- Angie Cacello—1998
- Stosha DeShaizer—1998
- Liz Prewett—1998

\*Weaver graduated in 1989 *summa cum laude* with a perfect 4.0 GPA  
 \*\*Freeland was named GTE/CoSIDA Academic All-American

## TEAM HONORS

- 1979-80 IAIWA Southern District Champions
- Final Four in IAIWA Southern District
- 1980-81 Runner-up in the IAIWA Southern District
- Final Four in IAIWA State Tournament
- 1994-95 Nationally Ranked 3rd
- GLVC Co-Champions
- NCAA II Tournament Berth (Tied for fifth)
- 1995-96 Preseason Ranked 3rd (Division II Bulletin)
- NCAA II Tournament Great Lakes Regional (Tied for 3rd)
- 1996-97 Preseason Ranked 6th (Division II Bulletin)
- GLVC Champion (20-0)
- NCAA II Great Lakes Regional Champion (Marquette, MI)
- NCAA II National Finalist (Grand Forks, ND)
- 1997-98 Ranked NUMBER ONE nationally for six weeks.
- GLVC regular season and tournament champions.
- NCAA II Great Lakes Regional Semi-Finalist (HOSTED BY USI)
- 1998-99 Participated in the NCAA II Tip-Off Classic at Disney's Wide World of Sports (Orlando, FL)
- Third in GLVC Tournament
- 1999-00 GLVC Tournament



SCREAMING EAGLES

# Record **BOOK**

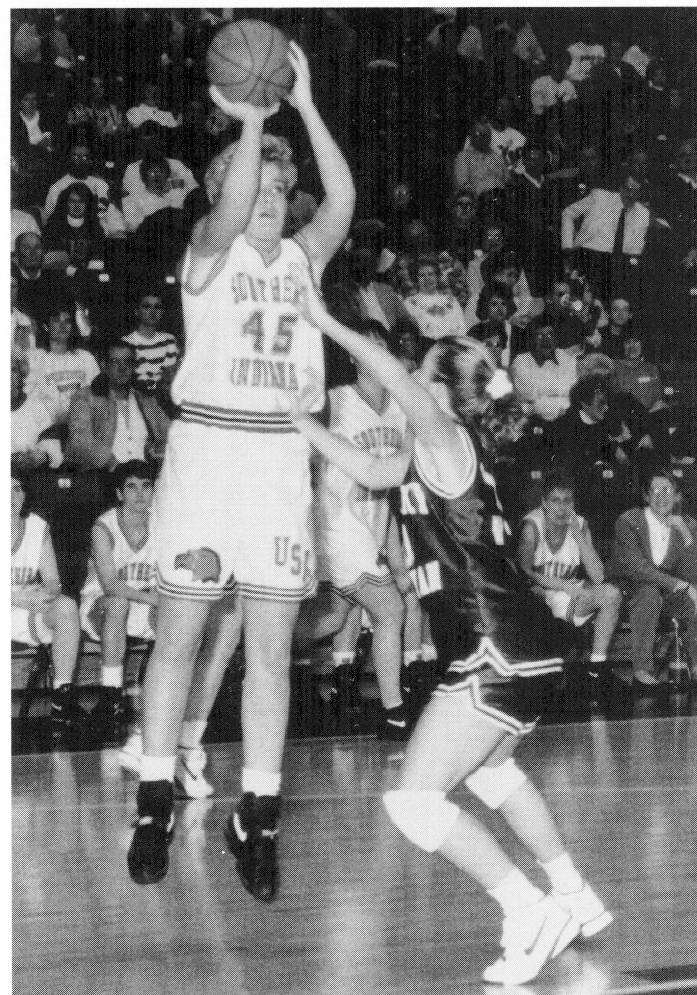
## ALL-TIME COACHING RECORDS

1975-76	3-8	Ruth Waller
1976-77	7-11	Ruth Waller
1977-78	8-8	Ruth Waller
1978-79	14-6	Ruth Waller
1979-80	16-9	Ruth Waller
1980-81	14-11	Ruth Waller
1981-82	7-17	Ruth Waller
1982-83	4-24	Ruth Waller
1983-84	15-13	Ruth Waller
1984-85	14-14	Ruth Waller
	(102-94, 520)	
1985-86	15-13	Larry Shown
1986-87	12-15	Larry Shown
	(27-28, 491)	
1987-88	8-20	Bob Barrett
	(8-20, 400)	
1988-89	6-21	Felicia Cavallini
1989-90	2-26	Felicia Cavallini
1990-91	3-25	Felicia Cavallini
	(11-72, 133)	
1991-92	8-20	Chancellor Dugan
1992-93	15-15	Chancellor Dugan
1993-94	17-10	Chancellor Dugan
1994-95*!	22-5	Chancellor Dugan
1995-96!	22-7	Chancellor Dugan
1996-97*!	30-2	Chancellor Dugan
1997-98*!	26-2	Chancellor Dugan
1998-99	19-12	Chancellor Dugan
	(159-73, 685)	
1999-00	15-12	Rick Stein
	(15-12, 556)	
25 YEARS+	322-326	(.497)
*GLVC Championship		
!NCAA II Tournament Berth		

## 1975-99 ALL-TIME WOMEN'S BASKETBALL SERIES RECORDS

Abilene Christian	0-1
Anderson College	2-0
Ashland University	7-15
Angelo State	1-0
Austin Peay	0-6
Bellarmino College	11-28
Brescia	0-3
Butler University	1-6
Cal State Dominguez Hills	1-0
Campbellsville	0-1
California-Davis	1-0

Charleston	1-0
Central Arkansas	1-0
Central Missouri	1-0
Central State	0-2
Columbia College	0-1
Columbus State	0-1
Chicago Circle	1-0
David Lipscomb	0-2
Delta State	2-0
DePauw University	2-0
Eastern Illinois	0-2
East Texas State	0-1
Evansville	7-15
Ferris State	2-0
Florida Tech	1-0
Fort Campbell	1-2
Franklin College-A	9-2
Gannon	1-0
Georgetown	1-0
Grand Valley State	1-0
Hanover	1-0
Indianapolis	20-22
Indiana Pa.	1-0
Indiana Tech	1-0
IUPU-Ft. Wayne	14-18
IUPU-Indianapolis	11-5
IU-Southeast	14-9
Indiana State	0-1
John A. Logan	4-0
John Hopkins	1-0
Kentucky State	12-3
Kentucky Wesleyan	29-21
Lake Superior State	1-0
Lewis	18-16
Lincoln Trail	6-2
Lincoln University	1-0
Lynn	0-1
Marian	0-3
Michigan Tech	2-2
Middle Tennessee St.	0-2
Missouri-Kansas City	1-2
Missouri-Rolla	0-2
Missouri-St. Louis	9-8
Missouri Southern State	0-1
Murray State	1-4
Nebraska Kearney	0-1
North Dakota	0-1
Northern Kentucky	10-25
Northern Michigan	2-1
Oakland University	1-1
Oakland City	23-9
Puerto Rico-Mayaguez	1-0
Pikeville	0-1
Quincy	11-3
Rockhurst	1-0
Scranton	1-0
School of the Ozarks	0-1
Southeast Missouri	1-11
SIU-Carbondale	4-2
SIU-Edwardsville	18-16
St. Ambrose	1-0
St. Francis	1-0
St. Joseph's	18-20
St. Louis	2-4
St. Mary's (Tex.)	1-0
St. Mary's of the Woods	4-0
St. Rose	0-1
Tampa	1-0
Truman State	1-1
Tri-State	1-0
Valparaiso	3-0
Vincennes	0-8
Wayne State	1-0
Wisconsin-Parkside	9-0
Wright State	2-2



## PLATINUM SPONSORS

Evansville Courier & Press  
G.E. Plastics  
Integra Bank  
Master Tire & Accessories

Pepsi Cola General Bottlers  
Shyler's Bar-B-Q  
West Side Nut Club

## VARSIITY CLUB ALL-AMERICAN EAGLES

ARC Construction  
Terry & Susan Babb  
William & Mary Jane Baechle  
Bruce & Carol Baker  
Ray & Cindy Bippus  
Bonnie Brill  
Ed & Holley Brundick  
Jack & Bert Burgdorf  
Steve & Terri Chancellor  
Bob & Pam Clayton  
Jerry & Mike Crawford  
David Deig  
Wayne & Patti Deig  
Ed & Gayle Derringe  
Gene & Genie Eades  
Craig & Margaret Ehlen  
Vic & Dot Feix  
Dan & Sondra Felker  
Jim & Judy Fleck  
Jef & Neal Franklin  
Ed & June Frederking  
Vic & Pam Gallagher  
Patrick J. Goen  
John & Helen Hamilton  
Joe & Sandy Hatfield

Dan & Kim Hermann  
Ron & Theresa Herrenbruck  
Loren Herrli  
Mark & Joyce Hubbard  
Industrial Contractors  
Ken & Dorothy Kaiser  
Rick & Jody Kissel  
Ralph & Judy Koressel  
Steven & Judi Kuric  
Mike & Debra Laster  
Aimee Luebben & Keith South  
Steve & Nancy McCullough  
Gary Patmore  
Bruce & Kim Pearl  
Jim & Jackie Pender  
Steve & Kim Pike  
Bernie Powers  
Rose Rexing  
Jack & Kate Siemers  
Earl & Ruth Smith  
Marvin & Joan Smith  
Larry & Kathy Vonderahe  
Paul & Eleanor Werner  
Jim & Eileen Will  
Jim & Karen Will  
John & Linda Willis  
Jeff & Laurie Wilmes  
Mark & Annette Wright  
Ray & Marilyn Wright

## GOLD SPONSORS

Casino Aztar  
Deaconess Hospital  
Denny's Classic Diner  
Old National Bank  
in Evansville  
Schultheis Insurance Agency  
Tri-State Athletic Club

## SILVER SPONSORS

ABC/25 WEHT TV  
Dausmann Chrysler Plymouth  
Dodge Jeep Eagle  
Expressway Dodge  
Fairfield Inn  
Fifth Third Bank  
Grandy's Restaurant  
Gerteisen Electric  
Hilliard Lyons of Evansville  
Ideal American Dairy  
Kenny Kent Toyota  
Lexus Mitsubishi  
Lewis Bakeries  
Lindsey Lincoln-Mercury Isuzu  
Shoe Carnival  
United Leasing  
Working Distributors

## BRONZE SPONSORS

Advantage Court & Fitness  
American General Finance  
Arby's  
Burger King  
Cameron Springs  
Cass Communications  
DiLegge's Restaurant  
D-Patrick Downtown Ford  
Elbrink Electric, Inc.  
Evansville Teachers Federal  
Credit Union  
Eyemart  
Fischer Candy Co.  
Golden Corral  
Hacienda Mexican Restaurants  
Haynie Travel  
Kight Home Center  
MAI Technologies  
Mattress Factory Showroom  
Mead Johnson Nutritionals  
Mulzer Crushed Stone  
O'Charley's Restaurant  
& Lounge  
Rafferty's Restaurant  
Rally's Hamburgers  
G.D. Ritzzy's  
Superior Concrete  
Tucker/Huber Realtors  
Turoni's Pizzeria & Brewery  
Wendy's Old Fashioned  
Hamburgers  
Zeidler Floral Co.



## USI Screaming Eagles Quick Facts

**Location:** Evansville, Ind. (population 279,000)  
**Enrollment:** 9,012 (Fall 2000)  
**Conference:** Great Lakes Valley Conference  
**Affiliation:** NCAA II  
**Nickname:** Screaming Eagles  
**Colors:** Red, White, and Blue  
**Home Court:** Physical Activities Center (cap. 3,300)  
**Web site:** www.usi.edu

## USI Board of Trustees

James L. Will, Sr., Evansville ..... Chair  
 Bruce H. Baker, Boonville ..... Vice Chair  
 Tina M. Kern, Evansville ..... Vice Chair  
 Louise S. Bruce, Tell City ..... Secretary  
 G. Patrick Hoehn, Jeffersonville  
 Thomas F. McKenna, Carmel  
 Ryan Helzerman, Newburgh  
 Harolyn G. Torain, Indianapolis

## USI Officers

Dr. H. Ray Hoops, President  
 Dr. John W. Byrd, Vice President for Student Affairs  
 Dr. Robert L. Reid, Vice President for Academic Affairs  
 Richard W. Schmidt, Vice President for Business Affairs  
 Sherrienne M. Standley, Vice President for Advancement

## USI Athletics

**Steve Newton**  
 Athletic Director .....812/464-1846  
**Jon Mark Hall**  
 Asst. Athletic Director/Men's Tennis Coach  
 NCAA Compliance Coordinator .....812/465-7164  
**Dr. Jack Marr**  
 Faculty Representative .....812/464-1814  
**Mike Goedde**  
 Baseball Coach .....812/464-1943  
**Bruce Pearl**  
 Men's Basketball Coach .....812/464-1908  
**Rick Herdes**  
 Assoc. Men's Basketball Coach .....812/465-1639  
**Ken Johnson**  
 Asst. Men's Basketball Coach .....812/465-1083

**Rick Stein**  
 Women's Basketball Coach .....812/465-7108  
**LeAnn Freeland**  
 Asst. Women's Basketball Coach .....812/464-1895  
**Randa Gatling**  
 Asst. Women's Basketball Coach .....812/465-1050  
**Mike Hillyard**  
 Cross Country Coach .....812/464-1846  
**Jim Brown**  
 Men's Golf Coach  
 and Athletic Academic Advisor .....812/464-1898  
**Don Bisesi**  
 Women's Golf Coach .....812/435-6075  
**Dan Hogan**  
 Men's Soccer Coach .....812/464-1946  
**Bill Wilkins**  
 Women's Soccer Coach .....812/465-1041

**Beth Watson**  
 Women's Softball Coach .....812/465-1664  
**Keely Porter**  
 Women's Tennis Coach .....812/465-1678  
**Katie Loyer**  
 Women's Volleyball Coach .....812/465-1789  
**Chris Johnston**  
 Head Athletic Trainer .....812/465-1298  
**Ray Simmons**  
 Sports Information Director .....812/465-1622  
 812/475-0373-H  
 812/465-7094-Fax

**Ticket Information**  
**812/465-7165**

**Community**

When the people of our community come together to support our teams, your friends at Old National are there to cheer them on.

**OLD NATIONAL BANK**  
 Your bank for life<sup>SM</sup>  
MEMBER OLD NATIONAL BANCORP MEMBER FDIC

SCREAMING EAGLES



# BE A PART OF THE EXCITEMENT of the **PEPSI/GLVC** BASKETBALL TOURNAMENT

Presented by Kenny Kent Toyota & Old National Bank



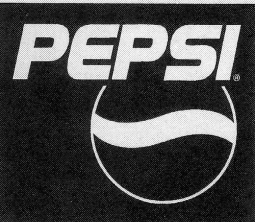
## Basketball Tournament



February 28, March 1-3, 2001  
Roberts Stadium • Evansville, IN

### Sessions

Wed., Feb. 28	Session 1	Game 1	Women's Quarterfinals	12:00 pm
		Game 2	Women's Quarterfinals	2:30 pm
	Session 2	Game 3	Women's Quarterfinals	6:00 pm
		Game 4	Women's Quarterfinals	8:30 pm
Thurs., March 1	Session 3	Game 5	Men's Quarterfinals	12:00 pm
		Game 6	Men's Quarterfinals	2:30 pm
	Session 4	Game 7	Men's Quarterfinals	6:00 pm
		Game 8	Men's Quarterfinals	8:30 pm
Fri., March 2	Session 5	Game 9	Women's Semifinals	12:00 pm
		Game 10	Women's Semifinals	2:30 pm
	Session 6	Game 11	Men's Semifinals	6:00 pm
		Game 12	Men's Semifinals	8:30 pm
Sat., March 3	Session 7	Game 13	Women's Finals	5:00 pm
		Game 14	Men's Finals	8:00 pm



For More Details Call  
812-476-1383

or visit our web site at [www.siu.edu/ATHLETIC/glvchome.html](http://www.siu.edu/ATHLETIC/glvchome.html)

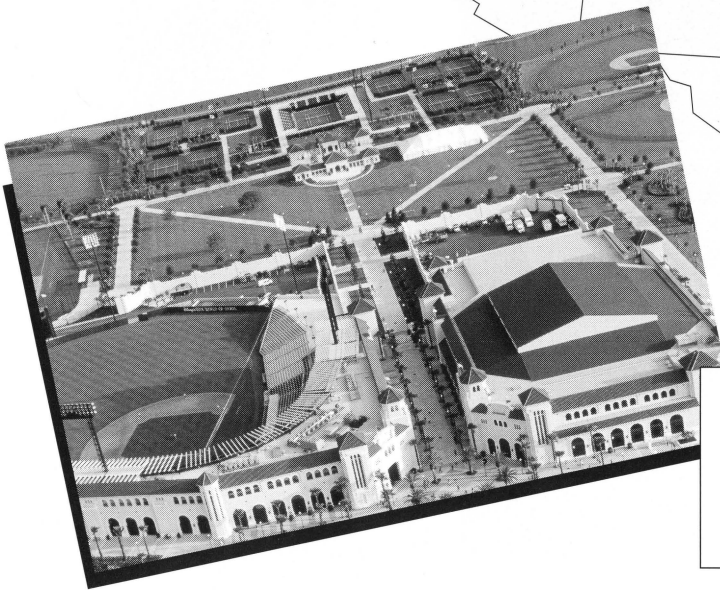
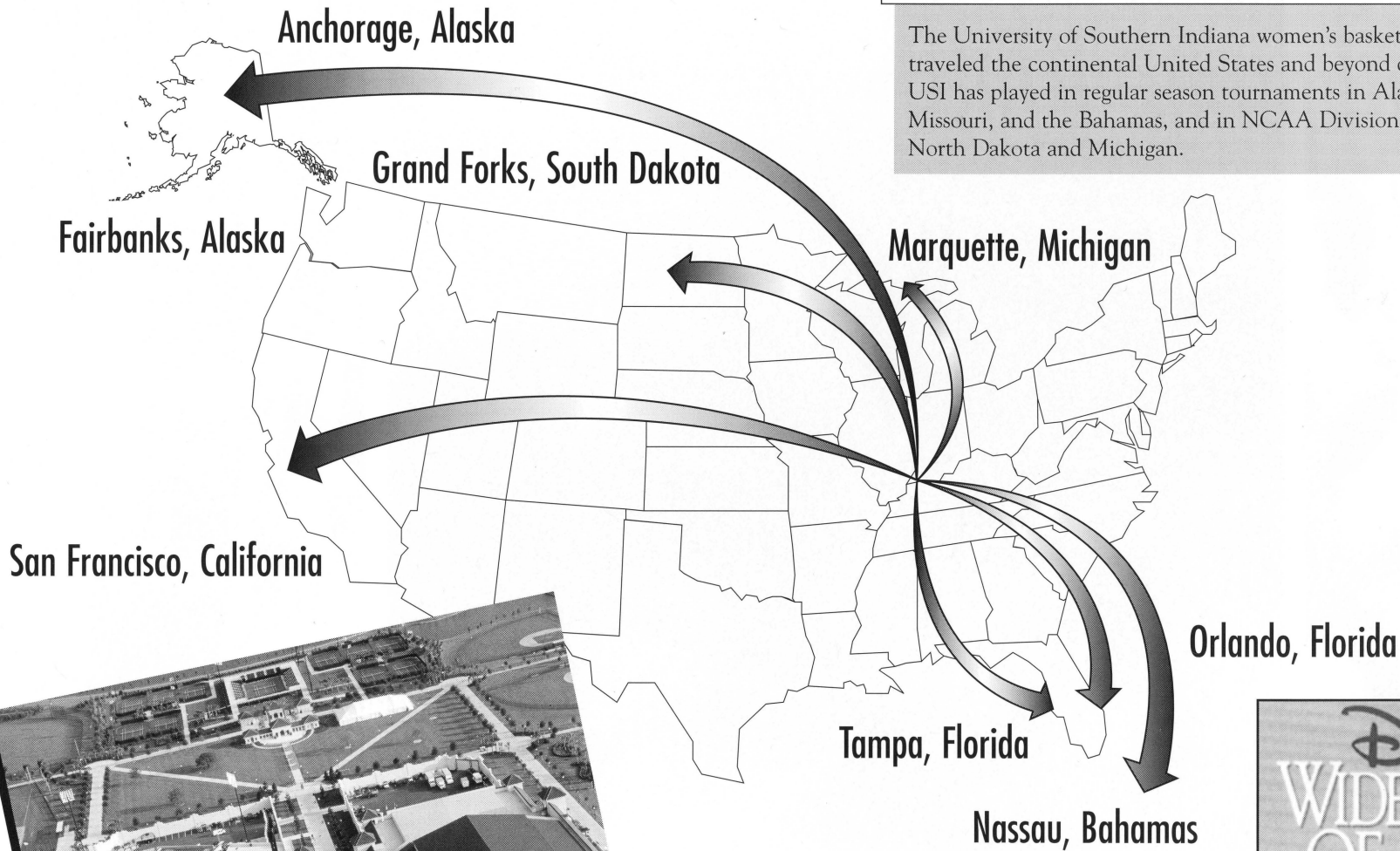


TOYOTA LEXUS Used Car SuperStore

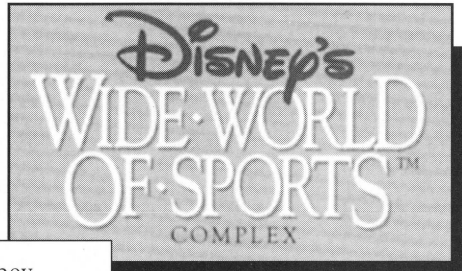
5600 Division Street - Evansville, Indiana 47715  
(812) 473-5600 - 1-800-321-KENT - [www.kennykent.com](http://www.kennykent.com)

## Screaming Eagles fly around the USA

The University of Southern Indiana women's basketball teams have traveled the continental United States and beyond over the last 10 years. USI has played in regular season tournaments in Alaska, California, Florida, Missouri, and the Bahamas, and in NCAA Division II Tournaments in North Dakota and Michigan.



In December 2000, the Eagles will fly to Orlando, Florida, and Disney World to play in Northwest Missouri State University's Disney Invitational. The trip will be the second time in as many seasons and the third time in six seasons that USI has visited Florida and/or played in Disney's Wide World of Sports.



SCREAMING EAGLES





S  
C  
R  
I  
A  
M  
I  
N  
G  
E  
A  
G  
L  
E  
S



**AIR CONDITIONING  
BRAKES  
TIRES & TUBES  
WHEEL ALIGNMENT**



# **MASTER TIRE & ACCESSORIES**

905 W. Columbia Street • Evansville, IN

Bryan Zeller  
David Zeller  
Jim Zeller  
Chuck Zeller

## **“GO EAGLES”**



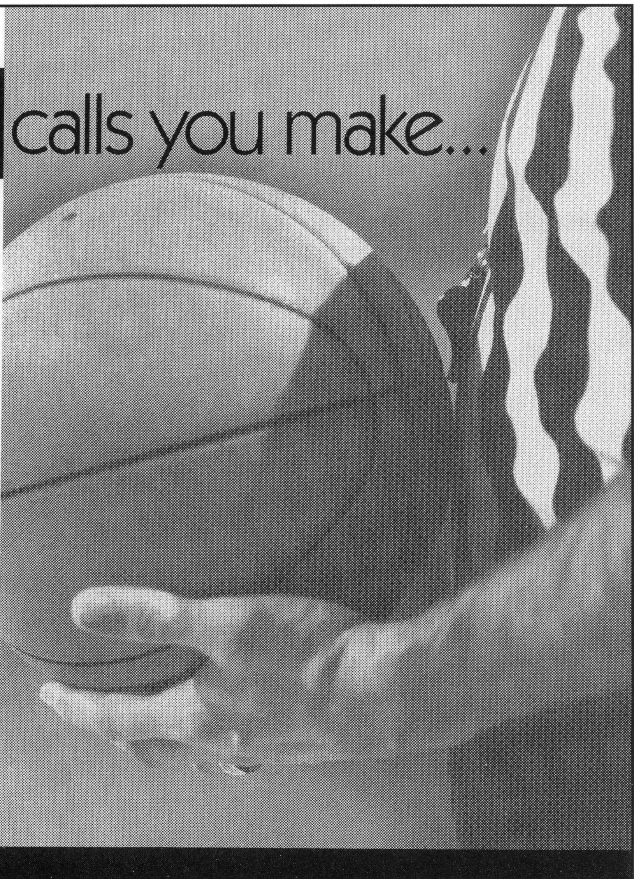
**AMERICAN OWNED • AMERICAN MADE**

SCREAMING EAGLES



for the tough

calls you make...



 **Schultheis**  
INSURANCE  
for what matters most





Listen, life's too short to settle for anything less than the best. Which is why you should be playing at Casino Aztar. We've got the best of everything. And you can get it all right now. High-energy slots cranking out giant jackpots.

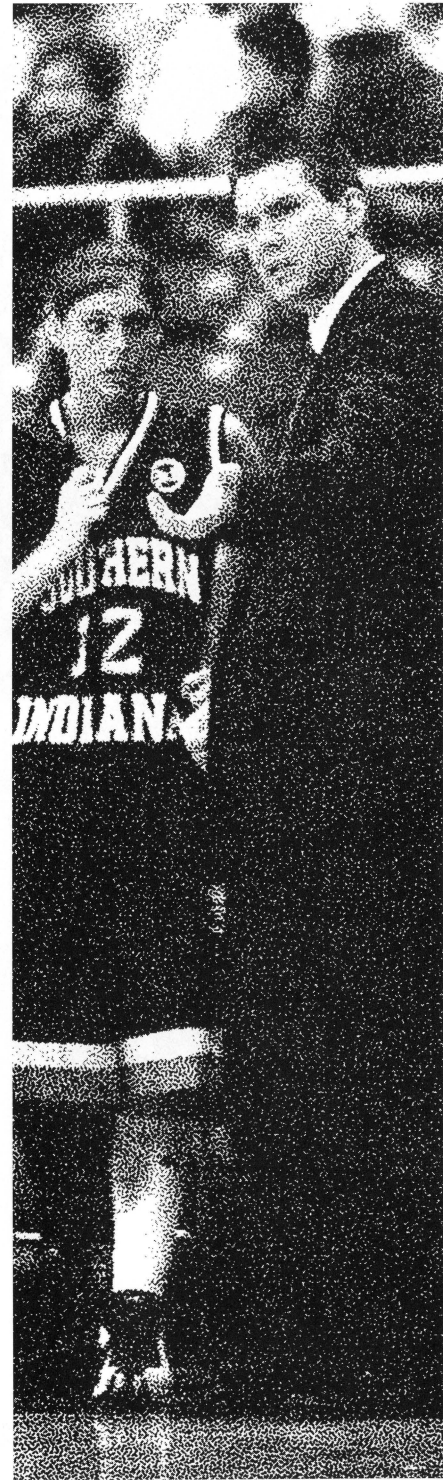
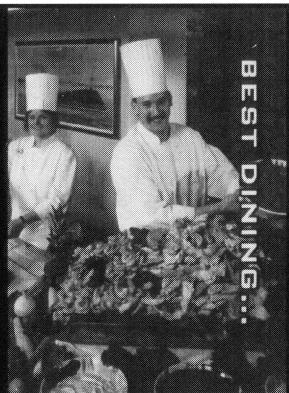


**1-800-DIAL FUN**

421 NW RIVERSIDE DRIVE  
EVANSVILLE, IN  
www.casinoaztar.com



Explosive table games action. A luxurious 250-room hotel. Five incredible restaurants offering a place for every taste. And FREE live headline entertainment all year long. Casino Aztar, we're the Best In The Midwest.. Just ask our players.



**www.deaconess.com**

**Your information link to Deaconess Hospital.**

Browse our Web pages to learn all that Deaconess has to offer. From our services to special events, you'll find it at [www.deaconess.com](http://www.deaconess.com).



SCREAMING EAGLES

SCREAMING EAGLES



**CLASSIC**

**DINER**

**OPEN  
24 HOURS**

*The Food's always Finer  
at Denny's Classic Diner.™*

**No Time To Cook?**

**BREAKFAST • LUNCH • DINNER**

**WE CATER: 1-800-274-5849**







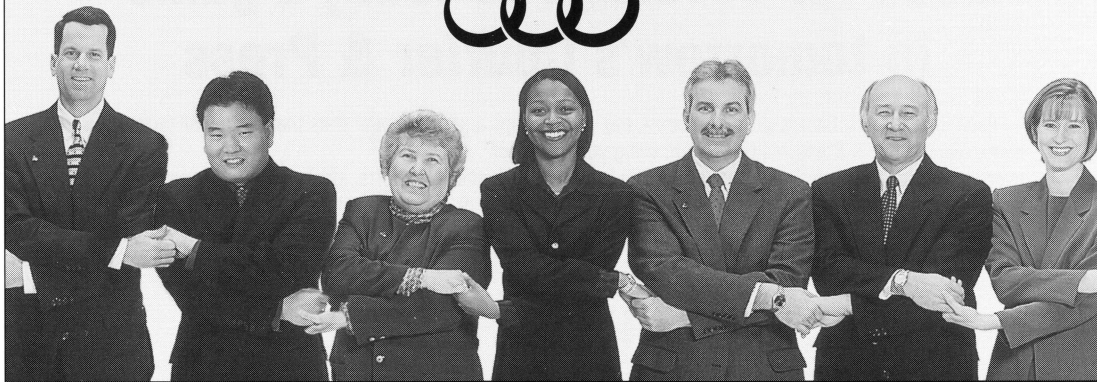
GO  
SCREAMING  
EAGLES

## Team play is our game plan.

From one Evansville institution  
to another – Go Team!

Thank you for making us your bank in Evansville.  
For over 150 years, we've delivered personal and  
business financial solutions to the tri-state area.  
Today, we're proud to be a part of many great teams.

Stop by your neighborhood Integra Bank today  
or call us at 800-467-1928



Together works...for you.

[integrabank.com](http://integrabank.com)

Member FDIC



SCREAMING EAGLES



# GO EAGLES!



## Look for coverage of today's game in tomorrow's Courier & Press

Each time the USI Eagles storm the court, the Evansville Courier & Press will be there to bring you every slam dunk, fast break and buzzer-beating 3 pointer.

You'll find features on your favorite players, game

recaps and all the vital stats that basketball fans expect.

Whether it's sports, local and world news, weather or entertainment, the Evansville Courier & Press provides the news that touches you.

Evansville  
**COURIER & PRESS**



# The Winning Game Plan!

For all your pre-game & post-game party plans, make the break to Shyler's Memphis Pit Bar-B-Q. Come on in for a delicious meal or carry-out a complete party for your entire crew.

## Shyler's Pick-Up Party

Everything you need for the perfect party. Enjoy tender pulled pork & two delicious side dishes, complete with bread, pickles, onions, paper supplies & utensils.

Approx.

# \$3.95

Per Person

Also, ask about Shyler's Complete Catering. We deliver & serve all-you-can-eat pulled pork & two sides for groups of 100-3,000 for approximately \$4.95 per person.



# SHYLER'S

MEMPHIS PIT BAR-B-Q

Green River Road, just south of Lloyd Expressway • 476-4599

S  
C  
R  
E  
A  
M  
I  
N  
G  
F  
A  
G  
I  
E  
S

# 2000-2001 WOMEN'S BASKETBALL TEAM

S  
C  
R  
E  
A  
M  
I  
N  
G  
E  
A  
G  
L  
E  
S



**NCAA II Finalist: 1997 • NCAA II Appearances: 1995, 1996, 1997, 1998 • GLVC Championships: 1995, 1997, 1998**

University of Southern Indiana