

THE SHIELD

University of Southern Indiana

September 12, 1985
Volume 14
Number 2



Activities Programming Board presents itself to students. Get involved — Join APB.

APB On The Move

by Paula Borman

The activities programming board (APB) will once again offer a wide variety of educational, social and recreational activities to USI students throughout the year.

The APB is now busy preparing for "Halloween Madness." This requires a lot of work, and new members would be welcome. Amy Baehl, Public Relations chairman said, "Although our first meeting for new members was held September 9, anyone can still join just by coming to a meeting." Meetings are held every Monday at 2 p.m. in UC 350. If this conflicts with a class, just call Amy Baehl at 464-1872. The

requirements to be a member of APB are to be active in two committees. Keith Jewell is the president of APB this year, with Alan Schroeder as vice president of Operations. Lori Muehlbauer will act as vice-president of Programming and Bobbi Hendrickson will be the treasurer.

Halloween Madness starts off a busy year on October 26. This all-campus Halloween party consists of best costume awards, portraits, palm readers, hay rides, a major motion picture, national entertainers, and a closing dance. The APB will then continue to hold events throughout the school year. Two major events, both to be held in the

Spring, are the Eagle Gran Prix, and Homecoming. Also held will be the Easter Egg Hunt, concerts, trips, and the montage of programs available during Spring Week.

The APB also has several special committees. The Historian is in charge of keeping a pictorial history of all APB events. Publicity advertises events by means of posters, fliers, banners and media spots. Public Relations informs students, clubs, and organizations of the philosophies of the APB. Many other committees exist, so one can be found to interest anyone. The APB can help any student, freshman or older get involved in school.

USI Reports Record Enrollment for '85-'86

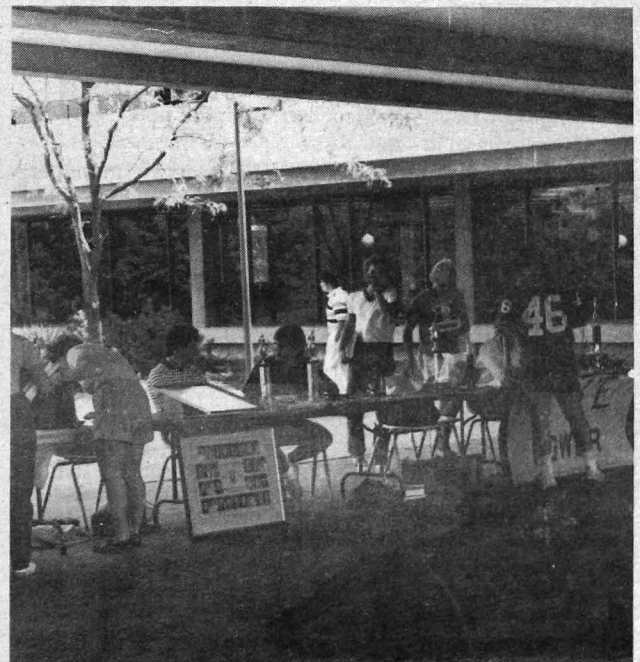
The University of Southern Indiana reached a record enrollment for the 1985-86 academic year, the Board of Trustees was told today by USI President David L. Rice.

Dr. Rice said the official enrollment figure of 4,025 is 177 students more than the 3,848 enrolled for 1984-85, a 4.6 percent increase.

He said he believes the

increase, which is contrary to nationwide trends, is a result of greater awareness in the Tri-State that public higher educational opportunities are available at USI.

"We are beginning to have an impact on the number of people going to college," he said, referring to statistics that show Indiana lagging behind the nation and Southwest Indiana running even farther behind in the number of people who go on to higher education.



Student Activities were presented in the University Mall

WSWI Ads Rock Program

by Marcy McDonald

Each and every day, sweet music flows out through the air waves from one of the numerous buildings on the USI campus. This building, located on the west side of the campus, is home to the WSWI radio station, host of a potpourri of programs ranging from classical music to album rock.

Housed in a small lab in the Technology Building, WSWI began its "air-life" on November 3, 1981 as a small, easy-listening station concentrating on classical music mixed in with numerous new spots. But, only two years later, the generosity of WIKY gave WSWI a new beginning: the small infamous WSWI was donated a new home by its more popular cousin, WIKY. WSWI was on its way!

Nearly two more years have passed since that well-remembered moving day. WSWI is making its mark on the campus and the community. It has been a tremendous aide to the communications program at USI as the staff consists mainly of Communication majors who began by working as volunteers for extra

credit and eventually became salaried workers. Side-by-side with these students are several experienced tri-state broadcasting specialists, such as Dr. Kenneth Creech. Dr. Creech explains that the station provides enthusiastic students with hands-on experience which in many cases will lead to good-paying jobs.

Programming at WSWI consists of music and entertainment varied enough to appeal to almost any taste. Through the week, the day begins in a classical mood at 7:00 A.M. until 11:00 A.M. Then the afternoon hours are livened up with the jazz/big band sounds. A new light rock program started in hopes of attracting listeners from MASH and, in general, the USI student body, follows from 2:00 to 4:00, and album rock beginning at approximately 4:30 takes you through the evening. In between these musical programs, WSWI finds time to report to its news-conscience listeners all the important happenings of the day. A network associated press broadcast will soon be heard each afternoon, rounding out the station's programming.

WNIN Negotiations Approved

Board members authorized university officials to open negotiations for a proposal that would allow WNIN-Channel 9 public television and radio to be relocated on the USI campus.

WNIN officials have searched for years for a new site for their facilities, now housed in the Old McCutchanville School north of Evansville. The school has been purchased by the McCutchanville Fire Department. Adequate land for development of a radio-television complex is available on the USI campus or on adequate parcels owned by the USI Foundation and Southern Indiana Higher Education, Inc.

Dr. Rice has stressed that negotiations are in preliminary stages. David Dial,

WNIN general manager, has said the advantages of relocating to the USI campus would make it a "win-win situation." The university would benefit from having an on-the-job training site for communications majors, while the station would benefit from student, staff, and faculty expertise.

The association might also enhance television instruction through IHETS (Indiana Higher Education Telecommunications System), the closed-circuit television service that allows schools to broadcast lectures and other programs to other universities and colleges throughout the state. USI now can receive the system's programs, but cannot originate them.



WSWI broadcast over the air waves.

Dimension — USI

What does independence really mean for the "New U?" This question, and many others, will be answered in the videotaped presentation: "Dimension — The University of Southern Indiana," produced by WFIE Channel 14, and presented by the Office of Student Activities.

The half-hour program, hosted by Channel 14's Rick Notter, focuses on the future of the University now that autonomy has been established.

Features include: an interview with University President Dr. David Rice; film footage of Governor Robert Orr signing the independence bill; a discussion with student and recently elected Board of Trustees member Eric Williams on the expanding Greek life for the USI campus; and also a look at the MASH Housing and how this will attract an entirely new group of students to the growing University.

The tape will be shown in the University Center Lounge (Snack Bar area) September 16-20, at 10:00 a.m., 12:00 p.m., and again at 5:15 p.m. each day.

Gillian Auditions

by Diane Holmes

September 16 and 17 auditions will be held for the fall play, *Gillian*. The play calls for five female and two male actors. Terry Schwab will direct the play, which will be presented at the USI Playhouse on November 14, 15, 16, 21, 22 and 23. If you'd like to audition or help out, contact theatre director Douglas Hubbell in the Humanities office or at the USI Playhouse.



The Shield Staff

Editor: Jodi Uebelhack
Managing Editor: Mark Ditsler
Sports Editor: Allen Stone
Layout Editor: Debbie Kissel
Business Manager: Doug Boes
Head Photographer: Ken Barkley
Copy Editor: Marie Sheffer
Photographers: Gred Wood, Mike Roeder, Gorden Wedding
Reporters: Patti Conia, Doug Puthoff, Marcy McDonald, Diane Holmes, Paula Borman, and Mary Rembusch.

University Services

Bodmer's America Exhibit

The New Harmony exhibit of Bodmer's original 81 prints is on permanent display in the Litchenberger Building in New Harmony, Indiana. This is the only complete exhibit on display in the United States open to the public. Only Lewis and Clark's exhibition is of more importance for the information gathered and artistic prints that were later published.

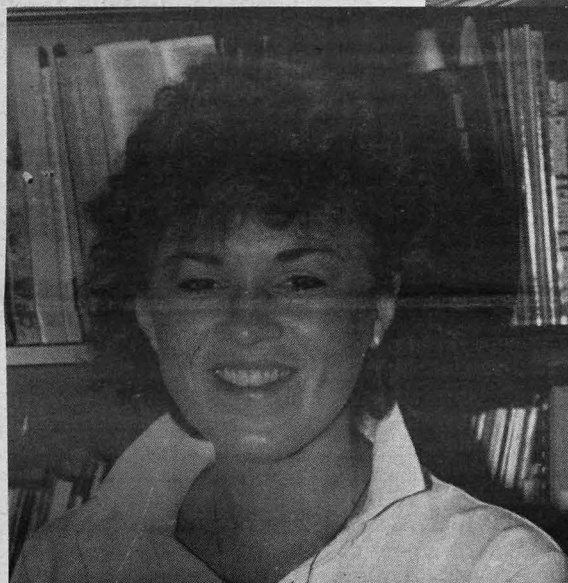
Karl Bodmer's America Exhibit, on loan from the Joslyn Art Museum in Omaha, Nebraska is on display through October 6, 1985 at the Metropolitan Museum of Art in New York City. The Exhibition of 109 watercolors and selection of aquatints and drawings commemorate the 150th anniversary of the Maximilian-Bodmer Exhibition of the upper Missouri River region.

Bodmer, a Swiss landscape artist, accompanied Prince Maximilian of Germany on a 13 month journey through the United States that included a winter in New Harmony, Indiana and the studying and recording of the Mandan Indians in Watercolor and Sketches.

Bodmer's depiction of realism and attention to the details of the landscape, wildlife, Indian Villages, and People disguise him as one of the best watercolorists of the American frontier.

The New Harmony Exhibit is part of the Maclurean - Science and Education - Era Tour which can be taken as part of the full tours starting at 9:30; 10:30; 12:00; and 1:00 everyday through October or as an individual exhibit site anytime on Sunday.

Don't be too shy to go to programs...



Above, Director of Counseling Center, Bob Harper

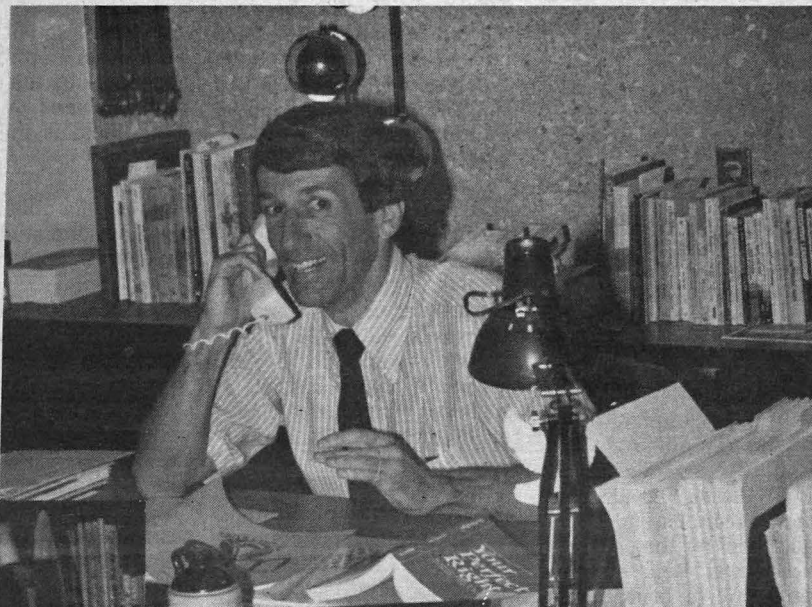
Left, Peer Counselor, Victoria Johnson

New Friends at the Counseling Center

by Diane Holmes

Do you like, dislike, or are you indifferent to repairing electrical wiring? Who would ask such a thing? Why would anyone ask it? The answer: USI's Counseling Center, in order to help you match your interests with possible careers.

That question is one of many asked on the *Strong-Campbell Interest Inventory*, one of the chief tools the Counseling Center uses in career counseling. Career counseling is one of four services that the Center offers. The Center's most important and widely used tools are people, who serve students with academic and personal problems, students with career questions and handicapped students.



This year, Counselor Bob Harper selected two student counselors, Victoria Johnson for traditional daytime students and Shirley Bullen—non-traditional students. Presently, Mr. Harper is looking for student counselors in each MASH building, and anyone interested should pick an application at the MASH office soon. Applications must be in by September 16 to either the MASH office or the Counseling Center.

The Center will offer two workshops and a program during the early fall. Each workshop will be repeated to give everyone a chance to attend, and all workshops will be held in the University Center.

The first workshop is a time management workshop, on Thursday, September 19 and Friday, September 20, both at 10 a.m. On Thursday, October 17 and Friday, October 18, at 10 a.m. also, a stress workshop will be given.

Steve Luzader will be the speaker at a program on a very contemporary problem, that of eating disorders. Mr. Luzader is a social worker at Welborn hospital, and his program will be held on Wednesday, September 25 at 11 a.m. and 12 p.m. in UC350.

Don't be too shy to go to programs, workshops or the Counseling Center. After all, as Mr. Harper says, student-to student counseling was instituted this year so "they (the students) can talk to someone who can relate more closely to their problems." In other words, the people at the Center are your friends, so if you have a problem, Ruth Cutheridge, the Counseling Center Secretary will help you make an appointment with a counselor. The Counseling Center's Phone number is 464-1867 and the Center is open from 8 a.m. to 4:30 p.m. All services are free—you have friends at the Counseling Center.

Delta Zeta's Travel to Phoenix

During the week of June 19-25, Sharon Rothrock, Delta Zeta President, and advisor, Carol Fehr, traveled to The Registry Resort, in Phoenix, Arizona to attend DZ's 39th biannual convention.

While in Arizona, they attended formal business meetings, workshops, firesides, an initiation, along with many other events. Some of the entertainment held throughout the week included Indian Dancers from a nearby reservation, a fun-filled evening "DZ Goes Western", complete with southern cooking and hospitality, and a Country and Western Band, and dancers from Galludet College school for the deaf.

Lambda Beta chapter was happy to bring home two membership awards which they received at the Awards banquet on Friday night. They were awarded a trophy for having pledged quota for six consecutive years, and also a plaque for being the largest sorority on the University of Southern Indiana campus. Over 400 Delta Zeta collegiates, alumnae, and National Officers were in attendance at the 39th Convention.

Sigma Sigma Sigma 1985 Pledge Class

The women of Sigma Sigma Sigma Sorority are pleased to announce their Fall 1985 pledge class: Sharon Lynn Nuebling, Darla Jo Lichtenberger, Cheryl Denise Goebel, Lori Ann Ellerbrook, Mary Beth Sartore and Lisa.

The officers of Sigma Sigma Sigma for the 1985-86 school year are: Cindy Goad-President; Becki Byrne-Vice President; Kathi Brinegar-Treasurer; Karla Robinson-Secretary; Renee Tigie-Membership Rush Director, and Vernica Brown-Education Director.

We would like to congratulate everyone on a successful rush and thank all of those who helped us out.

Respectfull Submitted,
Karla A. Robinson
P.R. Chairman



Speling isn't evrything!

Get Involved— Contact The Student Activities Office

Have you ever wondered how to get involved in a club or organization? The place to get information on any student activity is the Student Activities office located in the University Center. Student Activities does many things for the student body. Among them are Student ID's, a typing service, the Information Desk, reserving rooms for any club or organization, reserving banner space on the bridge,

the TV monitor system throughout the University, Audio-Visual equipment rental and assisting all students in enjoying their years at USI. Lists of all the clubs are available in Student Activities along with packets explaining how to start a new club.

Barry Schonberger is the director of Student Activities. If you have any questions, or simply need a friend, Mr. Schonberger is a good place to start. The office is open from 8 am to 4:30 pm Monday through Friday. The telephone number is 464-1862. Find a club that you enjoy and get involved in your school!

Shield, Transitions Student Published

The Transitions and Shield are publications sponsored by the university and published by students. The Shield is the USI student newspaper and the Transitions is the yearbook. Both publications have paid positions for students. The funding is supplemented by advertising.

The Shield is here to inform students and to provide a tool for expression or opinion. Published once every two weeks, the Shield concentrates on news from the university, student opinion and features.

The Transitions, USI yearbook, documents the year's happenings in a pictorial history. Photos of the faculty and senior class are included. The Transitions will be treasured as memories of a valued time in life.

The Transitions and Shield give the individual a unique opportunity to point out their views and utilize their abilities to the benefit of the entire student population. These attributes can be displayed through artistic talents in photography, layout or cartooning. Writing skills are valuable to both publications.

Letters to the Editor are accepted by the Shield, if they express a view with application to our student body in an effective manner. Pictures for Transitions express the feelings and views of the photographer.

Continuing Ed Is It for You?

by Mary E. Rembusch

Continuing Education offers 100 noncredited courses that range from courses concerned with small business, to courses dealing with folklore of Indiana. It offers seminars furthering the awareness of people already in their professional fields. Off campus programs include college credited courses at area high schools and institutions.

Continuing Education caters to the needs of the general public. The purpose of the organization is to help people further their education in various fields of study. The programs help the nontraditional and traditional student broaden their knowledge. Continuing Education provides non-credited courses, seminars, trips, and off campus study programs.

Continuing Education began approximately 15 years ago in the United States. The program at U.S.I. began 11 years ago. As the decline of traditional students came about, the program developed a new population of students at college campuses.

Linda Cleek, assistant director, is very optimistic. She hopes that more people will take advantage of the opportunities that Continuing Education offers. For any questions concerning the programs offered, contact Linda Cleek in the Continuing Education/General Studies office at phone # 1932.

Campus Ministry

Campus Ministry Programs Getting under way. A peer-counselor program at MASH and a cookout/get-acquainted session for persons interested in religious life activities on campus are among the activities now being organized by Father Anthony Kissel, Campus Ministry director, and Mr. Robert Harper, Counseling Center director.

Meetings already have started at MASH to explain the peer-counselor concept, gather ideas from MASH students, and recruit counselors. It is hoped there will be one peer counselor in each of the 10 apartment buildings who can serve as a resource person on questions of MASH and University policy and services. Faculty and staff members also are sought to assist Father Kissel and Mr. Harper as referral contacts for the peer counselors. A training retreat will be held for participants on Friday and Saturday, September 27-28, in MASH.

In addition, a Campus Ministry Evening cookout has been scheduled for 6 p.m. Tuesday, September 24, at Westwood Lodge, to bring together all students, faculty, and staff who are interested in participating in religious life activities on campus. Ministers in the community interested in serving campus needs will be invited.

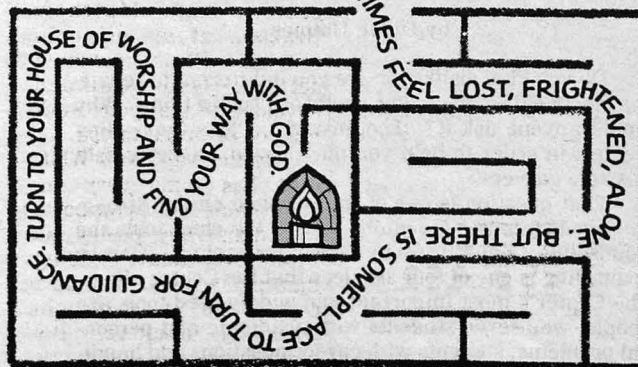
UC Typing

The UC Typing Service is back in action again! Angie Trimborn, the newest employee of the Student Activities Office, will be in the Graphics Office (lower level of the UC) to take papers from 1:00 p.m. until 4:00 p.m. Monday-Friday. Student workers at the UC Information Desk will also be accepting papers each day between 8:00 and 1:00 p.m.

The cost is \$1.00 per page and it is helpful to leave at least 2 days' notice for papers of average length (please allow more time for lengthy assignments.)

For all of your typing needs, remember the UC Typing Service!

LIFE IS FILLED WITH UNEXPECTED TWISTS
AND TURNS. SO WE SOMETIMES FEEL LOST, FRIGHTENED, ALONE.



Media Services

by Paula Borman

The Media Services of USI, located in Forum Wing Annex Room 184, includes a Production Center, Campus services and a film booking service. Together, they provide for both the production and delivery of instructional materials.

The production center provides photographic, graphic arts and other specialty services. Production work clients are charged on a "per-job" basis and pay only for materials. Trained photographers are available for assignments such as campus events, class projects, presentations and publicity. Photographic services also include black and white film processing and printing. Slide printing and duplicating and two day turn around one-6 color slide processing.

Graphic arts services available are overhead transparency production, instructional uses. The ser-

vice operates on a rental basis, with films available from both instructional and commercial services.

A film catalog and resource collection, along with trained personnel available to help in locating teaching materials. The media center requests that users place orders at least six weeks prior to desired use date.

The technician for media services is Dick Mills, the secretary Melanie Sensenbrenner and Larry Ordnor is coordinator.

Any of the media services can be contacted by dialing 1888. Office hours are:

Campus Services

Mon.-Thur. 8-6 p.m.

Fri. 8-4:30 p.m.

Film booking

Mon.-Fri. 8-4:30 p.m.

Production Center

Mon.-Fri. 8-12 p.m.

1-4:30 p.m.

Aerie Alert!

by Diane Holmes

Closet creative writers and graphic artists, it's your time to step out into the daylight! The Aerie, USI's literary magazine is now accepting poetry, short fiction and graphic art for the '85-86 edition.

Jared Carter, to whom English Instructor Matthew Graham conferred the title "Indiana's Poet Laureate," will judge the work, and thirty dollars will be awarded to the author of the work that he selects. Mr. Carter is a recipient of the coveted Walt Whitman award.

If you are a USI student, you may submit your entries to Matthew Graham, at his office in SCA 285. Please include a self-addressed, stamped envelope so that your work may be returned to you.

By the way, Walt Whitman has some very unpublished names for poets who didn't buy poetry, so before you start writing that masterpiece, pick up a copy of the '84-'85 Aerie in your USI bookstore. It's very affordable—only one dollar, and a good source of ideas.



Historic New Harmony, Inc.

Kunstfest

Fourth Annual Kunstfest (German Craft Fest) in New Harmony, Indiana Saturday and Sunday September 21 and 22. Saturday 10:00-5:00 and Sunday 1:00-5:00.

Craft Exhibits and Demonstrations will be intermingled with the business community when crafts particular to German heritage come to life for an exciting weekend in New Harmony.

The Harmonie Spinners and Weavers will present a fashion show at Thrall's Opera House on September 21 at 2:00 pm. A reception

and sale will follow the show. Tickets are \$7.00 and available through guild members or at Harmonie Weaving Institute — Rain-tree Center (Telephone 812-682-3578).

The New Harmony Theatre will have a rummage sale on the grounds of Murphy Auditorium September 21 from 9:00-4:00 and present *The Last of the Red Hot Lovers* at 8:00 pm Saturday and 2:00 pm on Sunday

Historic New Harmony will conduct tours and the Bake Oven will be in operation teasing the visitor with the aroma of hot bread.

Younger Scholars Program

Guidelines and application forms for the Younger Scholars Program of the National Endowment for the Humanities are now available for photocopying in the Placement Office. The Program will award up to 100 grants nationally to college and high school students to conduct their own research and writing projects in such fields as history, philosophy, and the study of literature. Applicants must be 21 years of age or under throughout the calendar year in which the application is submitted; or, if they are over 21, they must be full-time college students pursuing an undergraduate degree at the time of application. Individuals who will have received or expect to receive a bachelor's degree

by October 1, 1986, are not eligible to apply. The application deadline is November 1, 1985.

Recipients of these awards will receive a stipend of \$1,800 and be expected to work full time for nine weeks during the summer of 1986, researching and writing a humanities paper under the close supervision of a humanities scholar. Please note that this is not a financial aid program and that no academic credit should be sought for these projects.

If guidelines are not available at the Placement Office, please write to:

Younger Scholars Guidelines CN
Division of General Programs
Room 420
National Endowment for the Humanities
1100 Pennsylvania Avenue, N.W.
Washington, D.C. 20506

"Dracula"

The 60th Season of the Evansville Civic Theatre opens Sept. 20th with the classic thriller "Dracula".

Romance, mystery, chills, tears, fears and laughs await theatre-goers in the spectacular "Dracula", based on the Bram Stoker novel.

"A howling success", in its 1977 Broadway revival, ECT's production is under the direction of Kim Patrick Bitz with an accomplished cast of eight. Lisa R. Kolich will be seen as Miss Wells,

the maid; Larry Michael Conway as Jonathan Harker; Denny Sellers as Dr. Seward; David DeNoon as Abraham Van Helsing; Tim Kietzman as R.M. Renfield; Terry Cohen as But-terworth; Rhea Anne Cook as Lucy Seward; and as Count Dracula, Theodore Klipsch. The chilling sets and lights are being executed by Civic's designer, Wayne Idecker and the costuming the ECT stalwart, Danyne Gardner.

DON'T GET IN OVER YOUR HEAD.

Each year, millions of people learn water safety at a Red Cross class. Unfortunately, millions of others couldn't spare the time. What about you?



American Red Cross

University of Southern Indiana

STUDENT RIGHTS AND RESPONSIBILITIES

(Code of Conduct)

1.01 Authority

The Board of Trustees of University of Southern Indiana is empowered by the Legislature of the State of Indiana to operate the institution and to formulate such policies and regulations as are necessary to maintain that operation. Specific references to guidelines given by the General Assembly include:

Chapter 273 of the Acts of 1969

SECTION 1. It is the purpose of this act to recognize and define certain powers, duties and responsibilities of the boards of trustees of the several universities of the State of Indiana which are supported by appropriations made by the General Assembly. The powers, duties and responsibilities referred to by this act are not intended to include all powers, duties and responsibilities of the several boards and nothing contained in this act shall be deemed to diminish or abrogate any other of the powers, duties or responsibilities of the respective boards specifically conferred by statute or properly implied thereby.

SECTION 2. The boards of Ball State University Board of Trustees, Indiana State University Board of Trustees, the Trustees of Indiana University, the Trustees of Purdue University, and the Trustees of University of Southern Indiana each as to its respective institution, shall have the power and duty:

(a.) To govern the disposition and method and purpose of use of the property owned, used or occupied by the institution, including the governance of travel over and the assembly upon such property;

(b.) To govern, by specific regulation and other lawful means, the conduct of students, faculty, employees and others while upon the property owned by or used or occupied by the institution;

(c.) To govern, by lawful means, the conduct of its students, faculty, and employees, wherever such conducts might occur, to the end of preventing unlawful or objectionable acts which seriously threaten the ability of the institution to maintain its facilities available for performance of its educational activities or which are in violation of the reasonable rules and standards of the institution designed to protect the academic community from unlawful conduct or conduct which presents a serious threat to person or property of the academic community;

(d.) To dismiss, suspend or otherwise punish any student, faculty member or employee of the institution who violates the institution's rules or standards of conduct, after determination of guilt by lawful proceedings;

(e.) To prescribe the fees, tuition and charges necessary or convenient to the furthering of the purposes of the institution and to collect the same;

(f.) To prescribe the conditions and standards of admission of students upon such bases as are in its opinion in the best interests of the State and the institution;

(g.) To prescribe the conditions and standards of admission of students upon such bases as are in its opinion in the best interests of the State and the institution;

(h.) To award financial aid to students and groups of students out of the available resources of the institution through scholarships, fellowships, loans, remissions of fees, tuitions or charges, or otherwise, on the basis of financial need, excellence of academic achievement or potential achievement or such other basis as the governing board may find to be reasonable related to the educational purposes and objectives of the institution and in the best interest of the institution and the state. All awards of financial aid made or offered in good faith by the state universities to students of their respective institutions prior to the effective date of this act are hereby legalized. (Amended by PL 327, March 30, 1971)

(i.) To cooperate with other institutions to the end of better assuring the availability and utilization of its total resources and opportunities to provide excellent educational opportunity for all persons.

SECTION 3. Conduct which constitutes a violation of the rules of the institution may be punished, after determination of guilt by lawful procedures, without regard to whether such conduct also constitutes an offense under the criminal laws of any state or of the United States or whether it might result in civil liability of the violator to other persons.

SECTION 4. The individual governing boards are responsible to fulfill the powers, and duties conferred upon each by law. Each such board is authorized to employ such officers, faculty, employees, consultants and counsel as it may deem necessary or convenient to aid in the formulation and implementation of its policies and to execute its will within its particular institution. To such end each board may delegate to such persons and to others such authority as it may possess; provided, that no manner of delegation shall be irrevocable. Each board may provide (1) for the defense of such persons and of

members of the governing board in any suit arising out of the performance of his duties for, or employment with, its respective institution, provided the governing board by resolution determines that such action was taken in good faith, and (2) for saving any such person or member harmless from any liability, cost or damage in connection therewith, including, but not limited to the payment of any legal fees, except where such liability, cost or damage is predicated on, or arises out of the bad faith of such person or member, or is based on his malfeasance in office or employment. (Amended by PL 328, 1971)

SECTION 5. Nothing in this act shall be deemed to discourage or disparage the status of students, faculty, and other persons or the valid concerns of the public in matters of policy and of management of the universities of this State.

The Board of Trustees acting within its legal authority has established the policies and regulations of SECTION II, SECTION III, and SECTION IV concerning the conduct of students and the procedures for handling violations of these policies and regulations

1.02 Application

Each person who becomes a student at University of Southern Indiana has accepted conditions which are attached to his/her student status. This relationship between the student and the University is guided by some fundamental concepts:

A. Having been accepted for admission to the University, the student accepts the responsibility for utilizing the resources of the University in a positive and constructive manner for the purpose of achieving educational goals and without interfering with the rights of other students as they pursue their educational goals.

B. The University is enhanced by the contributions made by its students and graduates. Students have the opportunity as well as the responsibility to make positive contributions to the University through their daily interactions in the classroom and in campus life. In turn, the University provides opportunities for students to participate actively as members of the University community.

C. In any kind of human relationship, differences may exist. Members of a university community are committed to the use of intelligent, reasoned discussion as a means of resolving differences and problems.

By the time each student is graduated from this University, the taxpayers will have invested several thousand dollars in the student's education at this institution. The return expected by the taxpayers is not only technical knowledge, but also good citizenship and voluntary contribution in community service. If students are to realize these expectations upon graduation, they will offer to serve on committees, to hold elected offices, and to volunteer help in many valuable ways to make the University and the community better places in which to live and work.

The procedures, policies, and regulations described in SECTIONS II, III, and IV will apply to all students of University of Southern Indiana and will be considered a part of the terms and conditions of admission and enrollment of all students. The violation of any policy or regulation listed in SECTION II and SECTION III may subject a student to disciplinary action up to and including suspension and/or expulsion from the University. The regulations and policies will be enforced by the President of the University or his designates.

The procedures, policies, and regulations contained herein, supersede all prior university procedures, policies, and regulations regarding student conduct and disciplinary proceedings developed by the Student Life area of University of Southern Indiana and are in effect as of May 11, 1979, and shall remain in effect, as from time to time amended, until rescinded or modified by the Board of Trustees.

1.03 Definitions

Disciplinary action includes a range of sanctions up to and including Suspension, and Expulsion.

Suspension means termination of student status for a period of time. No academic credit can be earned or accepted on a transfer basis while a student is under suspension.

Expulsion means permanent termination of student status.

Disruption: Situations will be judged to be disruptive whenever any person or persons by physical, auditory, or other means, prevent, impede, hinder, hamper, or otherwise interfere with the ongoing operation of the University or University authorized activities.

Reside is the act or fact of living or regularly staying at or in some place.

University activity includes any teaching, research, administrative, or disciplinary function, proceedings, ceremony, event, or activity conducted by students, faculty, staff, or administrators that is being held by authority of the University.

University property means property owned, controlled, used or occupied by the University, including property physically removed from the main campus but in the vicinity of Evansville, such as USI Play House, and/or leased property.

University officials are those persons who have been given responsibility and authority by the appropriate agency or person and who are acting in the performance of their duties.

SECTION II

MISCONDUCT ACTIVITIES WHICH SUBJECT A STUDENT OR STUDENT ORGANIZATION TO DISCIPLINARY ACTION

Students or student organizations proven guilty of a violation of these procedures, policies, and regulations will have disciplinary action taken against them.

The following regulations are necessary for the orderly operation of the University:

2.01 Misconduct Activities which Subject a Student or Student Organization to Disciplinary Action.

Any of the following activities, or the aiding, abetting, inciting, encouraging or by his or her presence supporting of any of the following activities, constitutes misconduct for which students may be subject to disciplinary action up to and including suspension and/or expulsion from the University in addition to any civil action which may occur. Student organizations may be subject to disciplinary action up to and including revocation of registration.

2.01A Disturbing the peace on University property or the obstruction or disruption of any University activity by any means including any physical or auditory methods.

2.01B Unauthorized use, entry, or occupancy of any University facility, structure, equipment, or property such as furniture, building, grounds, flagpole, or sidewalks. (See also 2.04)

2.01C Misuse of safety equipment or engaging in activities dangerous to self or others which include, but are not limited, dropping objects from high places; tampering with fire equipment, exit lights, guard rails, elevators, or fire alarms; refusal to obey fire alarm; initiating a false fire alarm; or submitting a bomb threat.

2.01D Unauthorized use, possession, damage, destruction, or theft of public property or personal property other than one's own.

Students must assume responsibility for their personal property while it is on campus. It is the obligation of each student, as a citizen of the University community, to assist in the protection of the property of the State of Indiana. Payment for any property loss or damages which may occur will be obtained whenever culpability can be assigned.

2.01E Failure to comply with verbal and/or written instructions of University officials acting in the performance of their duties and made within the scope of their authority.

University Requests and the Student's Responsibility

University of Southern Indiana faculty and staff members have been assigned specific responsibilities by the Board of Trustees. In fulfilling these responsibilities, faculty and staff members have the authority which is commensurate with their position in the University and necessary to accomplish the task at hand. Therefore, students should honor the official request of any staff or faculty member. In the performance of his/her duties, each staff or faculty member represents the institution and the attack or threat of attack upon an official is a threat against the University itself. Such action cannot be tolerated. The above is also applicable to student employees when acting in the performance of their duties and within the scope of their authority.

Grievances against a staff or faculty member may be filed with the department head responsible for that area of the University.

2.01F Use, possession, sale, or transfer of narcotics, drugs, or hallucinogens, except as permitted by law. (See also 2.01G)

2.01G Drinking or possession of alcoholic beverages on University owned or leased property is prohibited except for private non-student functions which have received approval.

State Laws of Indiana Regarding use and Possession of Alcohol

Because liquor laws vary greatly among states, the relevant Indiana Law is quoted here for the benefit of out-of-state students.

Burns Indiana Statutes Annotated - Code Edition - Title 7, Sec. 7. 1-1-3-25 Minor. - The term "minor" means a person less than twenty-one (21) years of age. (IC 1971. 1-1-3-25, as added Acts 1973. P.L. 55, SEC. 1, p. 290)

Chapter 74 of the Acts of 1969

SECTION 1. It shall be unlawful for any minor to possess or have on his person for his own use, or to consume, or to transport on any public highway when not accompanied by at least one (1) of said minor's parents or guardians any alcoholic beverage of any kind or description.

Chapter 251 of the Acts of 1953

SECTION 2. Any person violating any of the provisions of this act shall be guilty of a misdemeanor, and upon conviction thereof shall be fined not less than five dollars (\$5) and not more than fifty dollars (\$50), to which may be added imprisonment in the county Jail for not less than five (5) days nor more than thirty (30) days for each offense.

Chapter 313 of the Acts of 1969

...it shall be unlawful for any person who is under the full age of twenty-one (21) years to be in any night club, road house, tavern, barroom, or in any public place, including a public dance hall or public concert hall, where alcoholic beverages are sold, bartered, exchanged, or given away, provided for or furnished to any person...

(h) Any person violating any of the provisions of this section shall be guilty of a misdemeanor, and upon conviction, shall be fined in any sum not exceeding five hundred dollars (\$500) to which may be added imprisonment not exceeding six (6) months.

Chapter 121 of the Acts of 1969

SECTION 1. It shall be unlawful for any person under the age of twenty-one (21) years, to make any false statements of his age to the holder of any alcoholic beverage permit or any of his agents or employees for the purpose of ordering, purchasing, attempting to purchase or otherwise procuring or attempting to procure the serving of any alcoholic beverage.

SECTION 2. (a) It shall be unlawful for any person to sell, give or furnish to any other person under the age of twenty-one (21) years, any false or fraudulent written, printed or photostatic evidence of majority or identity.

(b) It shall be unlawful for any person under the age of twenty-one (21) years to have in his possession any false or fraudulent written, printed or photostatic evidence of majority or identity. (c) It shall be unlawful for any person under the age of twenty-one (21) years to present or offer to any holder of any alcoholic beverage permit or his agents or employees any written, printed, or photostatic evidence of majority or identity which is false, fraudulent or not actually his own for the purpose of ordering, purchasing, attempting to purchase or otherwise procuring or attempting to procure the serving of any alcoholic beverages.

SECTION 4. Any person who violates any of the provisions of this act shall be guilty of a misdemeanor, and upon conviction thereof, shall be fined

an amount not to exceed five hundred dollars (\$500) to which may be added imprisonment for a period of not to exceed six (6) months.

2.01H Any kind of hazing, mental or physical abuse or threat of physical abuse against any person or his/her property, including such things as detention by personal or mechanical methods. (See also 2.01HA, 2.02, 2.03)

2.01HA The University defines hazing as any action taken or situation created, intentionally, to produce mental or physical discomfort, embarrassment, harassment or ridicule. Such activities and situations include paddling in any form; creation of excessive fatigue, physical and psychological shocks; quests, treasure hunts, scavenger hunts, road trips or any other such activities wearing, publicly, apparel which is conspicuous and not normally in good taste; engaging in public stunts morally degrading or humiliating games and activities; late work sessions which interfere with scholastic activities; and any other activities which are not consistent with ritual or policy or the regulations and policies of the educational institution.

* The use of any kind of mental or physical attack or threat of physical attack in order to win an argument, force agreement, or alter behavior is prohibited. (Adapted From Fraternity Executive Assoc. Statement of Position)

2.01I Transfer, use or possession of explosives, fireworks, firearms, dangerous chemicals, or any lethal weapon on University property under any circumstances except as part of a University authorized and scheduled activity. (See also 2.01H)

Fireworks and Explosives, Weapons, Physical Violence

A. Fireworks and Explosives — State law prohibits the sale, possession, or use of any kind of explosives or fireworks. Their sale, possession, or use by students is prohibited.

B. Weapons — Students may not possess or use firearms or other lethal weapons on any University property at any time, under any circumstances except as part of an organized, scheduled activity, and with prior approval. The storage of firearms or weapons in an automobile brought to the campus is also prohibited except for duly licensed officers of the law.

2.01J Falsification of information or misrepresentation of facts during any University hearing or on any University form or document and the unauthorized and/or improper use of University forms, documents, or records.

Falsification and Misrepresentation of Facts

A. Deliberate Misrepresentation of Facts — The falsification of information or misrepresentation of facts during any University hearing (either Administrative or in the Student Court System) will be considered in violation of this policy.

B. Forms, Records, and Documents — Falsification of records and/or misrepresentation of facts on any University form or document may result in disciplinary action and/or cancellation of registration. This includes but is not limited to registration materials, data sheets, fee receipts, checks for payment to the University, applications for vehicle registration, correct place of residence, or Event/Facility requests.

C. Correct Address — A student's address must be given at the time of registration and must be the actual place of residence. Any subsequent change of address is to be reported to the Office of Registrar.

Failure to register the actual current residence or a change of address is cause for the cancellation of registration and/or initiation of disciplinary proceedings which may result in disciplinary action up to and including suspension from the University.

D. ID Card Policies — It shall be illegal for a student to allow his/her Student Identification Card to be used by another person (whether a student or not). These cards are the property of the University and entitle the student to certain privileges. Therefore, no student shall have access to the privileges on the basis of any but his/her own Student Identification Card. Further, it is against University regulations for any person to alter in any way the information contained on the Student Identification Card. If it should be necessary to replace or change the card, the student should report to the Registrar's Office, where the student may begin the process of replacement. This card must be carried with the student at all times when on University owned or leased property and must be shown upon request.

2.01K Conduct that is a violation of the Criminal Code of the State of Indiana or of Federal law, or that by its nature poses a serious threat to the welfare or safety of persons or property.

University of Southern Indiana is legally obligated to establish whatever policies are deemed necessary to carry out its educational mission and processes. This obligation has existed since the founding of the University. The 1969 General Assembly of the State of Indiana elaborated and explicitly amplified its efforts to safeguard the welfare of the University by passage of several new laws. One of these laws is presented here.

The law is reported in its entirety because it pertains to higher education, and because it elaborates some expectations legally applied to student behavior. Students are expected to know the civil laws and the University policies and regulations which apply to their behavior.

Chapter 179 of the Acts of 1969

SECTION 1. It shall be a misdemeanor for any person intentionally to damage any property, real or personal, of any institution established for the purpose of the education of students enrolled therein.

SECTION 2. It shall be a misdemeanor for any person to go upon or remain upon any part of the real property of any institution established for the purpose of the education of students enrolled therein in violation of any rule or regulation of any such institution for the purpose of interfering with the lawful use of such property by others or in such manner as to have the effect of denying or interfering with the lawful use of such property by others.

SECTION 3. It shall be a misdemeanor for any person to go upon or remain within a public building for the purpose of interfering with the lawful use of such building by other persons or in such manner as to have the effect of denying to others the lawful use of such building.

SECTION 4. A person who commits a misdemeanor defined in this act shall be punished, upon conviction, by a fine of not to exceed five hundred dollars (\$500) or by both fine and imprisonment.

SECTION 5. Nothing in this act shall be interpreted as affecting the right of any person to engage in any conduct not in violation of this act or any rule or regulation of any such institution, or of any institution established for the purpose of education of students to discharge any employee, or expel, suspend, or otherwise punish any student, in accordance with its procedures for any conduct which may be a violation of any such rule or regulation of any such institution or rendered unlawful by this act or may otherwise be deemed a crime or misdemeanor. (See also: Chapter 273 of the Acts of 1969)

2.01L Conduct that is in contempt of the Student Court.

Contempt of Student Court

The Student Court has been established to help fulfill the administrative and educational functions of the University. Actions which hinder the court in fulfilling these purposes cannot be allowed and the following conditions may lead to charges of contempt of court:

A. The court shall have the authority to summons witnesses. Students refusing to acknowledge a summons shall be deemed in contempt of court and charged under the appropriate University regulation. (See also 2.01E)

B. The court shall be empowered to charge any individual who disrupts a court hearing in any way with contempt of court under the appropriate University regulation. (See also 2.01 A, E, H)

2.02 Failure to Abide by the Policies Guaranteeing the right of Expression of Students

The Board of Trustees of University of Southern Indiana recognizes the students legitimate interest in the administration and management of the ongoing affairs of this University, and recognizes their need to participate therein. To that end the University has established a legitimate student government with elected representatives of the student body and the various organizations on campus with whom the Administration and the Board of Trustees have worked in the past and will expect to work in the future. The board welcomes consultation with students and their participation in the administration of this University through the regular and orderly student channels.

The Board of Trustees has announced, approved, and published policies permitting peaceful demonstrations on the campus. The violation of these policies by the use of disorderly and unlawful actions as a method of presenting student demands to the Administration and Trustees of this institution will not be tolerated. Those students who engage in such activities will be subject to severe disciplinary action, including expulsion. Any requests, demands, or suggestions presented by such methods will neither be accepted nor acted upon by the Board of Trustees.

The University believes that the right of expression is as necessary as the right of inquiry and that both must be preserved as essential to the pursuit and dissemination of knowledge and truth. Consequently, students, individually and collectively, may express their views through the normal faculty, administrative, and student channels of communication. Students also may express their views by demonstrating peacefully for concepts they wish to make known, and the University will make every reasonable effort to protect that right.

The University also has equal and simultaneous obligation to protect the rights and freedoms of students who do not choose to participate in a demonstration. Similarly, the University is obliged to protect its property and to prohibit interference with scheduled activities of students, University personnel, and guests on the campus.

University of Southern Indiana is aware of the need for forbearance on its part in tolerance of peaceful demonstrations, protests, or other expressions of student attitudes. The University recognizes the fact that expression of opinion through demonstration or protest may, on occasion, lead to inconvenience and interruption of University activities or functions; therefore orderly and peaceful demonstrations are not forbidden unless they disrupt, as defined later in this policy, University functions or activities. The University has an obligation to assure the safety of individuals, the protection of property, and the continuity of the educational process. The object of the statement is, therefore, to provide through explicit reasonable limitations on expression a context in which expression may be protected and in which violence is avoided.

In order to meet all of the above obligations, the actions listed below are defined as exceeding the limits of appropriate expression or peaceful demonstration and are in violation of University policy for individuals or groups:

- A. Actions which endanger the safety and well-being of individuals.
- B. Actions which destroy property.

C. Actions which disrupt, by physical or auditory means, the on-going operations of the University or interfere with the rights of other individuals in their exercise of expression. (This is designed to protect administrative, faculty, and student functions such as classes, libraries, public and private meetings, health services, recreational activities, and on-campus recruitment. See also regulations regarding facilities priorities.)

Individuals holding views hostile to those presented by persons participating in a peaceful demonstration, protest, or other expression of student attitudes are subject to the same policies.

The initial judgement of the permissible limits of student expression should be made by the faculty member, administrator, or other University representative in charge of a specific University facility or function. Any member of the University community who believes the permissible limits of student expression have been exceeded may lodge a complaint to the University official in charge of the specific facility or function. If, after observation of the situation, the person in charge of a facility or function determines that said situation is no longer peaceful and orderly, he/she should:

1. Request, not direct, the students to desist from the activities causing the disturbance and allow a reasonable amount of time for such action to occur. In the event of the failure of his/her efforts at persuasion, he/she should inform the Office of Safety and Security of the nature of the disturbance and remain on the scene, except for extreme duress, until the arrival of the Security police.
2. Elect, when he/she believes personal safety or well-being will be endangered by direct involvement with the demonstrators, to inform immediately the Office of Safety and Security or the Office of the Vice President for Administration.

2.03 Adjudication of Violations of Policies Guaranteeing the Right of Expression of Students.

A. Violations of these limitations subject students to disciplinary action by the University.

B. The University disciplinary actions for students found guilty of disrupting legitimate University functions may range in severity from conduct warning to permanent expulsion.

C. Students involved in disruptive behavior will have their alleged offenses adjudicated in the same manner as those of students involved in other violations of University policy. This includes the opportunity to appeal.

D. Any charges by the University for violation of this policy must be made within six (6) months after the alleged violation.

2.04 Failure to comply with the Policies Regarding the Use of University Buildings and Facilities by University Organizations and Groups.

Every faculty group and every officially registered student organization has the right to the use of University facilities on a space-available basis for the purpose of holding meetings or conducting activities consistent with the objectives of that organization. Use of any facility is determined by the President or University officials designated by him according to the following priorities.

A. General Buildings and Grounds Space

1. Every person with legitimate business at the University has the privilege of free access to the public areas of the buildings and grounds during those hours when they are open, such hours to be determined by the President or a University official designated by him. These areas are defined to include sidewalks, the campus mall, athletic lockers, Reflection Lake, entrances to buildings, corridors in classroom and office buildings, library reading rooms, parking lots and common areas in the University Center.

2. The President or a University official designated by him may deny this privilege of free access to an individual or group which disrupts the normal operation of the University.

B. Student Activities Space

Student Activities Space of a general nature is available in the University Center. Space for social events, such as dances, movies, organizational meetings, and other such activities will be reserved through the Office of Student Activities after securing approval of the event from the Director of Student Activities.

C. Right of Usage

1. Use of space for purposes other than those for which it has been designated will not be allowed.

2. Neither individuals nor groups will be permitted to interrupt the use of space after it has been duly assigned, without the permission of the President or a University official designated by him.

3. Violations of 2.04, A-2, C-1, B and/or C-2, may be reason to initiate disciplinary proceedings as described in SECTION IV and subjects a student to disciplinary action up to and including expulsion.

D. Procedure for Requesting Approval of on Campus Events by Registered Clubs and Organizations

a. Responsibilities of Student Chairmen, Sponsors and Directors of Students Activities.

- 1.) Student organizations desiring approval of an on campus social event will secure the SA Form, Student Activity Event/Room Registration, from the office of Student Activities.
- 2.) The student who is to act as Chairman of the event will contact the organization's advisor for approval of the event. If the advisor approves the social event, he will sign the form in the appropriate space.
- 3.) The chairman of the event will then contact the office of Student Activities in order to get approval to proceed and to have the office of Student Activities coordinate the room or space needed and advise on any special arrangements or equipment.

- 4.) The completed document is then forwarded to the Director of Student Activities.
- b. Responsibilities of the Director of Student Activities.
It is the responsibility of the Director of Student Activities to consult with the Supervisor of Security to determine the number of officers needed at an event, and to notify, in writing, the Supervisor of Security as to the time and location of the event. It is determined that the number of security officers needed will exceed the number who are ordinarily on duty at the time of the event, the sponsor and the chairman of the event will be notified.
- c. All Social Events on Campus must be Approved at Least One Week Prior to the Event.

SECTION III

MISCONDUCT ACTIVITIES WHICH MAY SUBJECT A STUDENT OR STUDENT ORGANIZATION TO DISCIPLINARY ACTION

Student or Student Organizations proven guilty of a violation of these procedures, policies, and regulations may have disciplinary action taken against them as well as any action specifically stated in the regulation.

The following regulations are necessary for the orderly operation of the University:

3.01 Academic Dishonesty Including Plagiarism, Cheating, Submitting Another Person's Material as one's own, or Doing Work for Which Another Person will Receive Academic Credit.

The benchmarks of any great university are directly related to high standards of academic endeavor on the part of both teacher and student. It is in this relationship that truth and honesty are recognized as fundamental to a university community. The University expects both students and faculty to adhere to these principles and in so doing to foster the ideals for which the University was founded. Put simply, this means that the student will do his/her academic work without unauthorized aid or recourse to unauthorized means of any kind.

Although most students have well developed concepts of honesty, professors may need to explain carefully to them the special hazards to academic honesty that work in a given discipline may present. Professors should also exercise care in the planning and supervision of academic work so that honest effort will be encouraged.

Such breaches of academic honesty as may occur will be handled in the following way. In instances of cheating that appear to warrant a failing grade in a course, the professor will notify the Division Chairperson and the Vice President for Academic Affairs, in writing, of the circumstances. The student shall have the right of appeal of the professor's decision to both the Division Chairperson and the Vice President for Academic Affairs. After such an appeal, the student's grade will be determined by the instructor upon the advice of the Division Chairperson and the Vice President for Academic Affairs.

In instances of academic dishonesty in which the professor feels that action stronger than a failing grade in the course is indicated, the professor will report the situation to his/her division chairperson, and the Vice President for Academic Affairs. When in their judgment such action is warranted, the student may be referred to the Office of the Vice President for Administration, which will determine appropriate disciplinary action in keeping with the procedures utilized in the handling of student conduct situations.

3.02 All University Social Policies

- A. The use or presence of alcoholic beverages or illicit drugs at University funded and/or campus events is prohibited.
- B. All on-campus social events of student organizations must be approved and calendared in the Office of Student Activities (See section 3.03).
- C. One member of each couple attending a student event is to be a student of University of Southern Indiana, unless arrangements have been made to invite special guests.
- D. At student events sponsored by student organizations, the officers of the group must assume the responsibility of representing the University and its social policies.

3.02A Required Procedures for Social Events

A. Approval and Calendaring — The purpose of approval and calendaring social events is fourfold in nature:

1. To avoid or become aware of conflict of dates and places.
2. To receive assistance in planning both individual and overall programs.
3. To receive information about all-University policies which might affect the planned event.
4. To allow the outside public to attend the event if so desired.

B. Approval requires obtaining permission from the Director of Student Activities. This applies to fraternities, sororities, Activities Programming Board, and all other student organizations (departmental, honorary, religious, etc.).

C. Calendaring of an event will be coordinated by the Office of Student Activities through the appropriate calendaring procedures.

3.02B Approval and calendaring should be completed in ample time for the preceding purposes to be met.

3.02C It is the responsibility of the officers, members, and advisor(s) of an organization to establish specific hours at the time of request for approval for their social event.

These hours should be based upon the educational mission of the institution, the type of activity, and the location of the activity.

3.03 Policy on Sales and Solicitations

Sales and solicitations may be made only by an officially registered campus organization and only if they are for the general benefit of the University and/or the community. Permission must be granted by the Director of Student Activities.

Solicitation is defined as "that for which something is obtained, but nothing of equal value is given in return." (Examples: Homecoming Booster Buttons, etc.) Approved applications for sales and solicitations events must be on file in the Office of Student Activities. Application for approval for sales and solicitations events may be initiated in the Student Activities office.

Space in the University Center lobby and the Lounge may be used by registered student organizations for conducting campus-wide elections, distributing literature relating to student organizations, recruiting membership for student organizations, and activities, sales, and solicitations.

3.04 Failure to Comply with the Motor Vehicle Policy

All students who drive, operate, possess, or have the use of a motor vehicle of any type must register it with the University Security Office at the time they register as a student at the University. An annual registration fee of \$5 has been fixed by the University Board of Trustees, and is payable when the vehicle is registered.

Traffic regulations are enforced by the Office of Safety and Security by the authority granted by Indiana statutes and the University of Southern Indiana Board of Trustees. Copies of current Traffic Regulations are issued to students registering cars at registration, or may be secured at the University Security Office. Monetary assessments are made for failure to obey the Motor Vehicle Regulations and continued violations may result in disciplinary action up to and including suspension of Registration Privileges.

Summons may be appealed by written application to the Security Office, if requested within seventy-two (72) hours of the TIME appearing on the summons.

3.05 Failure to Comply with the Provisions of the Outside Speakers Policy

University of Southern Indiana considers freedom of inquiry and discussion essential to a student's educational development. Through open discussion of ideas and exchange of opinions, one can become informed, can test, and give expression to values as they relate to issues concerning society.

The University recognizes its responsibility to provide students with the opportunity to develop themselves as responsible, thinking, individuals. Further, citizens have not only the right, but also the obligation to inform themselves regarding various issues, views, and opinions. The appearance of visiting speakers is encouraged by the University as one means by which members of the University community are provided with an opportunity to explore a variety of views and opinions.

The University recognizes that any subject or view may be repugnant or distasteful to an individual or group holding divergent views. The University further recognizes that the question of appropriateness is not determined by the subject matter as such, but by the method of presentation and the extent to which there is critical examination through disciplined inquiry by faculty and students.

Restraints on activities connected with learning should be held to that minimum which is consistent with preserving an organized society in which peaceful, democratic means for change are utilized. Each individual has the right to express his/her ideas and opinions; however, he/she must recognize that those who have different opinions have the same rights. Exercise of rights involves acceptance of responsibility. And, true to the University's norms of advancing inquiry, a visiting speaker should expect and be prepared for critical examination of his/her presentation.

On the basis of these premises, University of Southern Indiana will encourage any University-registered group of students, faculty, administrators, or staff to invite speakers* to the campus subject only to the following provisions:

1. That the speaker not advocate violation of any Federal or State law and that the speaker be aware that any personal violation of any Federal or State laws will make him/her subject to action by authorities.
2. That following the speaker's presentation adequate time be allowed and opportunities provided for questions and criticisms from members of the audience. The speaker must be made aware of and agree to this condition.
3. That neither the sponsoring group nor the speaker attempt to indicate University support of the speaker or his/her ideas.
4. That a member or members of the sponsoring group be on the platform with the speaker to present the speaker and his/her topic as well as to conduct the question period.
5. That in order to schedule properly the event, to assure adequate facilities, to insure the necessary publicity and to assure proper procedure, the sponsoring group wishing to invite a visiting speaker to the University will make all arrangements for reservation of space with appropriate University officials seven days in advance of the speaker's appearance.**
6. That violation by the sponsoring group of the provisions or intent of the stated policy and procedure will subject

that group and its members only to those sanctions which are applicable in cases of violation of other University rules.

* These provisions do not pertain to speakers participating in regularly scheduled classes or University programs nor to persons seeking State or Federal offices as these speakers are covered under other provisions.

** Exceptions to the seven day advance notice may be given by the President of the University or some other official designated by the President.

3.06 Failure to Comply with the Procedures for Implementation of the Outside Speakers Policy

In order that the provisions and intent of the Outside Speakers Policy of University of Southern Indiana be implemented, the following procedures have been instituted. This procedure is intended to assist the sponsoring organization, the speaker, and the University community to receive maximum benefit from the presence of the speaker on campus.

To make this assistance equal and understandable to all concerned, the following steps have been established:

A. The Student Activities Event/Room Registration Form must be completed seven days in advance of the speaker's appearance.

B. Scheduling forms may be obtained from and completed forms must be submitted to the appropriate office as determined by the nature of the sponsoring organization:

1. Office of Student Activities — SGA, fraternities, sororities, Student Activities Board, and all other student organizations (departmental, honorary, religious, etc.)
2. Office of the Vice President for Academic Affairs — faculty, administration and staff.

C. Publicity by the sponsoring organization may be released only upon the completion of the Scheduling Form, and after approval by the appropriate office.

3.07 Policies for Posting Notices

All posters, banners, handbills, notices, etc., other than those distributed by University offices must be approved and distributed via the Office of Student Activities. Poster areas are limited to 7 and are placed in high traffic areas. Additional posters are recommended for replacement of lost or damaged ones. Posters will be removed the day following the event by the Student Activities employees. It is requested that poster size be limited to 17" x 22" because of space limitations. All questions, problems, or special requests should be directed to the Office of Student Activities.

SECTION IV

PROCEDURES FOR ADJUDICATION OF VIOLATIONS OF CODE OF STUDENT CONDUCT

4.01 General Overview for Handling Conduct Situations

The State of University of Southern Indiana with the responsibility for providing an orderly campus environment conducive to learning in which persons and property are protected from harm. As a state institution, University of Southern Indiana has further responsibility for upholding the laws of the State. A priority is inherent among these responsibilities.

1. protect persons and property;
2. uphold state law;
3. provide an orderly environment conducive to learning;
4. encourage the personal growth of students

The Board of Trustees of University of Southern Indiana has adopted University policies and procedures in exercise of the above responsibilities. The University administration is responsible for providing the process for dealing with violations of the policies.

An appropriate formal charge may be brought against a student by any member of the University community. In all cases, the complaint shall first be brought before the appropriate official of the University. If the charge or complaint is ruled not to fall within the jurisdiction of the student court by appropriate administrative officials the complaint will be adjudicated by the administrative hearing system. If the charge or complaint falls within the jurisdiction of the court the appropriate University official will communicate the official charges to the student or parties involved, who may then choose between the Student Court System if the Court is functioning or the Administrative hearing system for adjudication. If the student court system is not functioning at the time a charge is officially made, the case will be heard by the administrative hearing system. In all cases the parties involved will be encouraged to resolve their complaints before being forwarded for formal adjudication.

The process which has been developed for handling conduct situations contains two components: conduct discussion and conduct adjudication.

A. Conduct Discussion

Conduct Discussion is a process which may be utilized by an administrator when complaints are received for an alleged violation and the disciplinary action will be not result in change of student status. The accused student is informed of the complaint by an administrator and is given the opportunity to discuss the alleged violation. The student may admit to the violation, may deny involvement, or may request to have the complaint transferred to the conduct Adjudication process.

Should the student admit to the violation and the disciplinary action will not result in a change of student status, a record of the incident is main-

tained in the administrator's file for one (1) calendar year. If, during that year, the student becomes involved in another incident and is found guilty of a violation the Conduct Discussion record will be utilized in determining appropriate action.

Should the student admit or deny involvement and, through the discussion process the administrator finds the student is innocent or there is no basis for the complaint, the complaint is destroyed and no record of the discussion is kept.

Should the student deny involvement and the administrator does not agree, the student may request that the complaint be transferred to the Conduct Adjudication process.

B. Conduct Adjudication

Conduct Adjudication is a process which is used for all alleged violations which may result in a change of student status. The process contains three fundamental steps: (1) presentation of the charges, (2) hearing, and (3) decision and action by an administrator. An appeal opportunity is available to the student upon receipt of the decision.

4.02 Description of Rights in Disciplinary Situations

Students have been accorded rights in disciplinary situations by the Board of Trustees in keeping with procedural due process guidelines. These rights may be found in written detail in the Student Government Association Constitution. (Article IV, Section 8) Basically students have the right:

1. to examine all written information pertaining to the alleged violation;
2. to a fair hearing;
3. to know whether statements made in disciplinary situations can be used in student courts, administrative procedures, or civil courts;
4. to the choice of hearing body, when Student Court is in session; see Student Government Constitution Article VII, Section 4A
5. to bring an advisor from the University community to a hearing;
6. to appeal decision of the hearing body.

4.03 Conduct Adjudication Process

A. Presentation of Charges

A student who is accused of an alleged violation of a University policy meets with an administrator. The purpose of the meeting is to apprise the student of all written information which constitutes the complaint and charges. The student receives a thorough explanation of the Conduct Adjudication process which includes a review of rights in disciplinary situations, a comparison of hearing bodies, the right to waive the hearing, a detailed explanation of possible actions, and a description of the preservation of and release of information from the conduct records. The student is given forty-eight (48) hours to make a choice of hearing body.

B. Hearing

All hearings provide the opportunity for the accused student to respond to the charges, to present witnesses, and to raise questions. Hearings provide the opportunity for the complainant to amplify the allegation, to present witnesses, and to raise questions. The hearing officer or Student Court justices will, through questioning, seek to arrive at the truth. Should a student fail to appear at a scheduled hearing, after proper written notification, the hearing will be conducted in his/her absence.

C. Decision Giving Interviews

Student Court System

1. In this interview the student has the opportunity to read the continuity which is written by the court reporter and which is a compilation of the material available in reports and from the hearing. The student may make corrections pertaining to material presented in their defense at the hearing.
2. The student will receive the courts verdict in writing.
3. The student will be informed that the verdict of the court are recommendations to an administrator and must be concurred by that administrator before actions can be formulated.
4. The student will be informed that an administrator will give the student the decision about what action is being taken in his or her case. This decision will be presented by an administrator who has not previously been involved in that case. See Administrative Hearing System 2, 3, 4, & 5.

Administrative Hearing System

1. At this interview the student has the opportunity to read the continuity which is written by the hearing interviewer and which is a compilation of the material available in reports and from the hearing. The student may make corrections pertaining to material presented in the defense at the hearing.
2. The student will be informed of any restriction placed on him/her.
3. The student will be made aware of the individuals notified of this action.
4. The student will again be informed of his/her right to file for appeal.

- If necessary, the procedure for removal from a probationary status will be explained.

4.04 Types of Disciplinary Actions

The actions which may be taken when a student is charged with a violation of University regulations or public laws range from charges dropped up to and including expulsion from the University. The action taken depends upon the severity of the violation, the degree of involvement of the student, the individual circumstances of each case, the student's conduct record, and the student's academic progress.

A. Charges Dropped — All written material pertaining to the individual is destroyed.

B. Conduct Warning — A written warning is given, followed by a thorough discussion of University policies. Record is kept for one (1) calendar year. If student is not involved in any other conduct situation during the calendar year following the warning, the record is then destroyed.

C. Conduct Probation — This action is a formal probationary status during which the student is removed from good standing at the University. The probation may carry additional stipulations. Record is maintained for three (3) calendar years after the date of the last action taken, then destroyed.

D. Strict Conduct Probation — This action is a formal probationary status, very near suspension, during which the student is removed from good standing at the University. The probation may carry other restrictions and stipulations. Record is maintained for three (3) calendar years after the date of the last action taken, then destroyed.

E. Suspension — This action indicates that a student is excluded from the University for one (1) or more semesters, depending upon the severity of the disciplinary situation. Record is maintained permanently.

F. Interim Suspension — This action may be used to temporarily remove and exclude a student from the University community, when the student's action or threat of action indicates serious threat to the welfare and safety of persons or property. No hearing is necessary before the action is taken, but a regular hearing will be held within five (5) school days of the effective date. If the suspension stands, the record is kept permanently.

4.05 Appeals

A. A decision of the Student Court System or an administrative hearing officer may be appealed by the defendant or university officials to the Campus Appeals Commission, provided that:

- The request for appeal is received by the Campus Appeals Commission within forty-eight (48) hours of the decision giving interview;
- There is a question concerning the constitutionality of the rule, regulation, or student law allegedly violated;
- The failure of due process is claimed;
- Significant new evidence is to be introduced;
- The appropriateness of recommended action is questioned;
- The Campus Appeals Commission has not previously heard another appeal of the same case.

B. Decisions of the Campus Appeals Commission may be appealed to the President of Campus, who with the advice of the appropriate University officials or counsel shall have the final administrative jurisdiction.

C. The Campus Appeals Commission, consisting of an administrator, faculty member, and a student with one alternate appointed for each position, is a standing committee appointed by the President of Campus.

4.06 Violations of Regulations by a Student Organization

As in the case of a violation of a conduct regulation by an individual, a complaint may be filed accusing a student organization of a violation. Upon receipt of such a complaint, a charge will be given to the president or highest ranking officer in the organization, an administrative or student Court hearing will be conducted, and a decision will be given and disciplinary action taken. All proceedings will parallel those provided by Sections 4.01 through 4.05 of this part for the due process disposition of complaints lodged against individuals. The filing of charges against and taking disciplinary action with a student organization does not preclude the filing and taking of disciplinary action with individuals involved in the same violation(s).

4.07 Types of Disciplinary Action Which may be Taken With A Student Organization

A. Charges Dropped

- The charge may be dropped if there is insufficient evidence to support the charge.
- The charge will be dropped if there is evidence presented during the hearing that shows the organization is not guilty of the charge.

B. Conduct Warning

- The action is a verbal warning about conduct which has been judged to be not in keeping with the expectations of the University.

2. Record is kept for a calendar year only. If the organization is not involved in any other conduct situation during the calendar year, the record will be destroyed.

3. A thorough explanation of University policies is given.

4. The student officers and faculty advisor of the organization are instructed that further need for discussion in these areas, (Point 3), could be cause for additional disciplinary action.

5. Charges for any damage or costs incurred as a result of a violation may also be assessed.

C. Probation

1. This action is a formal probationary status during which the organization will have certain restrictions placed on it for a period of time.

2. Restrictions and provisions of the probation are individualized to the particular needs of the organization; these may include restrictions on social events, on use of University facilities, or on participation in campus-wide events.

3. Charges for any damages or costs incurred as a result of a violation may also be assessed.

4. Any further violation of University regulations or probation restrictions while on probation means that an organization subjects itself to further disciplinary action.

5. University officials with responsibility for adherence to restrictions placed on the organization will be notified, as well as the persons responsible for registration of student organizations. Additionally, National offices of affiliated student organizations will be notified.

D. Review of Registered Student Organizations

1. This action indicates that an organization's standing as a registered student organization of the University is in jeopardy and a formal review of the registration of the organization is being requested of the body with jurisdiction.

2. Action from such a review may ultimately result in revocation of registration of a student organization.

3. For those organizations with National affiliations, a request for formal review will also be made to the National President.

POSITION OPEN:

Choir Director

SALARY:

Negotiable

CONTACT:

Lawrence Becker

PHONE: 425-7526

St. Mark United Church
of Christ

7501 Hogue Road,
Evansville

Canadian Ski Trip to Highlight USI's Fall/Winter Excursions

A Thanksgiving skiing vacation in Canada will be a highlight of the fall excursions being offered by the University of Southern Indiana's Office of Continuing Education.

Also on the agenda are weekend trips to Indianapolis for the "Home in Indiana" Antiques Show and to the Shakertown community at Pleasant Hill, Kentucky. A trip to Chicago for a stage production and other enjoyment still is being worked out.

Skiers will spend a week at Sunshine Village, straddling the Continental Divide in beautiful Banff National Park, Alberta. There will be downhill and cross country skiing for all ability levels in a package that includes five 90-minute ski lessons, lift tickets, double-occupancy rooms, meals, and round-trip airfare from Evansville. Vacationers will have an opportunity to explore Calgary before going on to Banff.

The ski vacation package costs \$839. The deadline for registration is October 8. Skiers will leave Evansville at 7 a.m. Saturday, November 23, and return at 9:30 p.m. on Saturday, November 30.

The antique show at the Indiana State Fair Grounds, Indianapolis, will be the initial destination for a weekend trip on September 28-29. The show

will feature formal, country, and regional furniture, fine and folk art, metalware, textiles, and much more. Saturday will be spent at the show and Sunday at the Connor Prairie Pioneer Settlement, a living community recreating life of the 1830s.

The registration deadline is September 10. The package includes bus transportation, rooms at the Holiday Inn North (a Holidome facility featuring indoor pool, jacuzzi, sauna, and game room), and tickets to the antiques show and Connor Prairie. Fees range from \$100 per person for those sharing a room with three or more, \$110 for double occupancy, to \$135 for single occupancy.

Escorts for the trip will be James Sanders, director of Historic New Harmony, Inc., and an antique consultant, and Ms. Kinda Cleek, assistant director of USI's Office of Continuing Education.

The Shakertown trip is slated for mid-November and will have a mid-to-late-October deadline on registration. Details are still being worked out.

Persons interested in joining any of the trips, including Chicago, may contact the Office of Continuing Education, 464-1863, for details.

participate in one sport, or in several sports, qualifying them for the all-sports title. The sports in the intramural competition are tennis, softball, football, volleyball, basketball, bowling and golf.

Unlike the regular intramurals, the recreation portion does not count for the all-sports trophy. Many of the recreational activities are centered more toward leisure time pursuits, including co-ed volleyball, fribell softball, and horseshoes. Also included are many special events such as the upcoming Super Weekend, featuring co-ed softball and volleyball.

Intramurals

by Douglas A. Puthoff

"I want to entice people to be more interested in student activities," said Ruth Waller, Director of Intramurals and Recreation. "Not a lot of freshmen know about intramurals."

According to Waller, there are two types of intramurals: regular intramural sports such as basketball and volleyball, and informal leisure activities.

For the competitive intramural sports, any group of people can form a team. The athletes need only register with Mrs. Waller in her office (PAC 305). Aspiring sportsmen can either

The PAC, A Busy Place

by Douglas A. Puthoff

The Physical Activities Center (PAC) at USI is the center of many activities in the University, many of them, obviously having to do with physical activity.

The main feature of the PAC is the gym on the east side of building. The gym can seat up to 2,800 people. Besides being the location for several physical education classes, the gym is also the site for several intercollegiate sports. Currently, only the USI womens' volleyball team is in action in the gym, but soon the mens' and womens' basketball teams will start practice in preparation for the upcoming season. The PAC will also be the site for most of the home games for both teams. Several intramural sports programs are also held at the gym throughout the year.

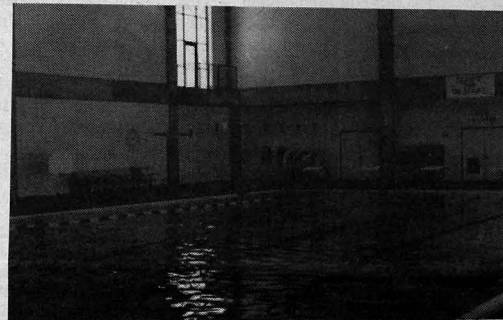
On the other side of the PAC is a 25-meter long swimming pool. The pool is open to all USI students weekdays from seven to nine in the morning, noon to 1:30 in the afternoon, and 8:30 to 10:30 at night. On Saturdays the pool is open from 1:00 to 3:45. The pool

is also the home for the USI swim team and the Mt. Vernon swim team, along with competition in synchronized swimming.

USI's sports medicine facility is also located in the PAC. Under the supervision of trainer Chris Diaz, the purpose of the facility is the prevention and care of injuries to USI's athletes. Diaz helps plan the conditioning of athletes, attends practices, and refers athletes to a doctor if the injury is serious. In addition, there is a doctor who gives athletes regular physical examinations, along with two assistant trainers.

One room in the PAC looks like something out of a medieval torture chamber, with various devices whose purpose seems to be inflicting pain on people. This room is the weight training center. Contained in the room is a Universal weight training machine, where students may work on lifting various weights. There are also other physical training devices, such as stationary bicycles.

According to Diaz, one problem with using the weight machines is that people sometimes over-exert themselves and get injured.



IHSAA-Sanctioned Athletic Officiating Courses Slated at USI

The increasing number of girls' athletic events and a high burn-out rate among those who officiate in area competition has contributed to a shortage of persons qualified to be officials at Indiana High School Athletic Association events.

To help ease the problem, six-week courses in officiating for basketball games and wrestling matches will be offered by the University of Southern Indiana's Office of Continuing Education, starting next week. Both classes will include an IHSAA licensing examination for those who want to become officials.

The wrestling course will be taught by Don Henry of Reitz High School, who said the shortage of officials in this area is the most critical because there are fewer people who know the

technicalities of wrestling than basketball.

The course is designed for those interested in taking the exam or for parents, youth coaches, and fans who want to learn more about the sport. The topics will include recent rule changes, weigh-in procedures, team and match scoring, tournament and dual meets, and officials' equipment and duties.

The class will meet from 6 to 9 p.m. on Wednesdays, September 11 to October 16, in the USI Administration Building, Room FWA 58. The registration fee will be \$30 for the course and text, \$50 if the IHSAA exam will be taken. The exam will be given on October 23.

The basketball course, to be taught by James Dunlap of Castle High

School, will be a thorough interpretation of the rules and officiating techniques designed for potential officials, fans, and coaching staffs. Topics will include equipment, officials and their duties, scoring and timing regulations, violations, fouls, and penalties.

The class will meet from 6 to 9 p.m. on Thursdays, September 13 to October 17, at Castle High School on Indiana 261. The registration fee is \$40 for the course and text, \$60 if the licensing exam will be taken. The exam will be given during the last class on October 17.

Interested persons may call the USI Office of Continuing Education, (812) 464-1863, for details or to register.

Eagles Ready to Run

by Allen Stone

University of Southern Indiana Men's Cross Country will open its seventh season on an optimistic note. After a string of four successive appearances at the NCAA II National Championships; with 3rd and 5th place finishes in 83 and 84, and four straight Indiana Little State Championships, the Eagles missed qualifying for the nationals by one spot and finished second in the Little State last year. The returnees are determined to return to the nationals and regain the Little State Championship. Seniors this year are Tom Rehl, Joe Lake, Garrick Walton and Graig Clemons. "Tom, Joe, and Garrick have run very well this past spring and summer, and are working for a great season," says Coach Bill Stegemoller.

Two juniors, David Roos and Rodney Sutherlin, should be right with them and Clemons, who was plagued with injuries last year, is now healthy.

A group of five freshman have been working hard and are making the adjustment to the demanding workouts. Leading the group and making a strong bid for the top five is Mike Orban, from Lake Central. Mike placed 5th in the 3200 meter run at the IHSAA State Finals this past spring. Other freshmen are Pat Barron, from South Vermillion; Brad Apple and Steve Jamell, both from Indianapolis Cathedral; and Steve Harrell, of North Daviess.

Rounding out this year's squad is an improved Bob Shaw and James Gabbard.

Nicaraguan Farmer to Speak at USI

Valentine Ponce, a farmer from Nacaragua and lay religious leader of BLOQUE, a Christian organization serving 150 base communities, will speak at 12 noon Monday, September 16, at the University of Southern Indiana.

The program will be held in Room 55 of the Administration Building, and is open to students, faculty, and the general public.

Mr. Ponce will discuss the conditions faced by peasants of his country who live in villages along the border with Honduras, where the Contras are waging a guerrilla war against the Sandinista Regime.

He currently is touring the United States under the sponsorship of Witness for Peace, and is being sponsored at USI by the Campus Ministry, the Seminar in Public Opinion, and the Program in Latin American Studies.

Women's Tennis Ready To Go

The Lady Eagles tennis team is hot into action and it looks to be a very good year for them. With a lot of experienced juniors and seniors returning, the Eagles will be a force to reckon with in the upcoming tennis season. So let's get out and support these gals and root them on to victory.

The Eagles were playing the University of Evansville in a tennis match but due to rain the match was cancelled half way through the meet. The game will be

finished at a later date.

Here is the rest of the September schedule for the tennis team.

Sept. 10 Home Kentucky Wesleyan

Sept. 13 Home Butler

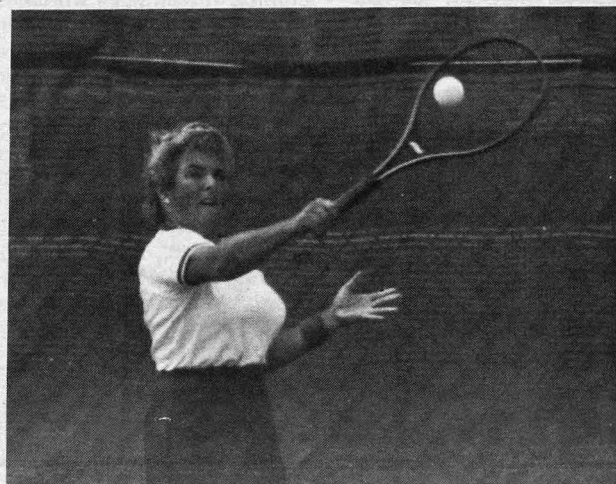
Sept. 21 Away IU Southeast

Sept. 27 Home Bellarmine

Sept. 28 Home Franklin College

Sept. 29 Away Northern Kentucky

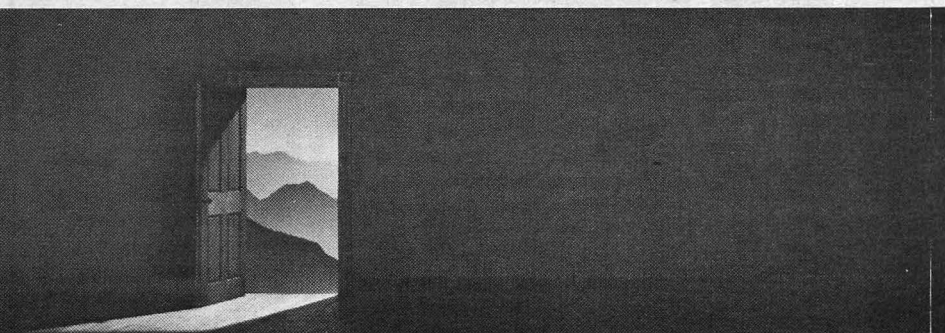
All home matches will be played at USI tennis courts here on campus.



USI cross country team as follows: Standing top Tom Rehl, Garrick Watson, Standing left Bob Shaw, Joe Lake, Standing Right Pat Barron, Rodney Sutherlin, Coach Bill Stegemoller, Kneeling David Ross, Steve Jarnell, Steve Harrell, Brad Apple, Mike Orban, James Gabbard, not in picture Graig Clemens

1985 Cross Country Schedule

Sept. 14	Kentucky Wesleyan Invitational	Owensboro, KY
Sept. 21	Nut Club Invitational	Home
Sept. 28	Illinois Invitational	Champaign, IL
Oct. 5	Indiana Invitational	Bloomington, IN
Oct. 12	Murray State Invitational	Murray, KY
Oct. 18	Indiana Intercollegiates	Bloomington, IN
Oct. 26	Great Lakes Valley Conference	Romeoville, IL
Nov. 9	NCAA II Great Lakes Regional	Ashland, OH
Nov. 23	NCAA II National Championships	East Stroudsburg, PA



The world is waiting. Be an exchange student.

Step into an adventure filled with opportunities and challenges. As part of International Youth Exchange, a Presidential Initiative for peace, you live abroad with your new host family. Learn new skills. Go to new schools. Make new friends.

Young people from all segments of American society are being selected. If you'd like to be one of them, write for more information on programs, costs and financial aid.

Help bring the world together, one friendship at a time.



Write: YOUTH EXCHANGE
Pueblo, Colorado 81009

Mid-America Student Housing, Inc.

by Marcy McDonald

An important contribution to the USI campus was opened last year. It consisted of ten buildings designed to house approximately 560 Southern students and a few staff members who were spirited enough to live in a very youth-oriented community.

The apartment complex, known as MASH (Mid-America Student Housing, Inc.) opened during the 1984-85 school year, although not all of the buildings were entirely finished. Since its completion, students have been beating down the MASH office doors in hopes of securing a spot in one of the 172 furnished apartments.

MASH was quite a problem-solver for many out-of-town students who, before MASH opened, were forced to drive many miles to school, get an apartment off-campus, or possibly

were discouraged by the lack of on-campus housing and chose not to attend USI. Now for the cost of \$495.00 a semester, plus a \$100.00 security deposit, many students are enjoying the comfort of a nice one or two bedroom apartment located only a hop, skip, and a jump from the USI campus.

Although the key word to describe MASH is freedom, there are still some rules that must be followed. Three rules were stressed throughout the building meetings, which were held during the first two weeks of school. They were the restriction of alcohol, cleanliness of the areas around the buildings, and a minimum amount of noise.

MASH managers Vicky Lewis and Gloria Kuhlenhoelter, along with Father Kissel (campus ministry) and Bob Harper (Director of Counseling) are currently in the process

of organizing a Resident Counsel Program. This program will employ one student from each building who, after extensive training sessions, will act as a peer counselor to the other students in his or her building. This student will also attend monthly board meetings with MASH management where student concerns and problems concerning MASH will be discussed. The management's enthusiasm for this new program will undoubtedly secure its success.

In general, the MASH management feels that as their new programs become effective and students learn to work together and demonstrate a "Good Neighbor Policy" toward each other, living at MASH will become a most rewarding part of a USI student's life.



MASH has become the familiar residence of many USI students.

LEARN TO FLY AT TRI-STATE AERO

Take an introductory flight.

For only \$20 actually be at the controls and fly the airplane.

FOR INFORMATION CALL

SALLY HACKER 426-1221 963-3903

Golf in the Swing

by Allen Stone

The USI golf team is swinging into action this year and are looking for a better than average year. Coach Jim Brown has only one returning player back, Dave McAtee who will be his number one player. Coach Brown also said he has a lot of junior college transfers, freshman, and first year players who will help the team out considerably.

Here is the September schedule for the golf team.

Sept. 5	Away	Butler Invitational at Eagle Creek Country Club, Indianapolis
Sept. 9	Away	Indiana Central Inv. at Prestwick Country Club, Indianapolis
Sept. 13	Away	St. Josephs Inv. at Curtis Creek Country Club, Rensselaer
Sept. 16	Away	Franklin Inv. at Hillview Country Club, Franklin
Sept. 23	Away	Indiana Intercollegiated Golf Championship, Lebanon
Sept. 26	Away	Ky. Wesleyan Inv. at Owensboro, Ky. Ben Hawes St. Park
Sept. 27	Home	USI Inv. at Helfrich Hills Country Club, Evansville

Library Services

August 17, 1985 - January 13, 1986

Regular Hours:

Monday through Thursday	7:45 a.m.-10 p.m.
Friday	7:45 a.m.-4:30 p.m.
Saturday	9:00 a.m.-1:00 p.m.
Sunday	1:00 p.m.-5:00 p.m.

Learning Resources Center and Special Collections/ University Archives observe shorter hours. Specific hours are posted in each area.

Exceptions:

Aug. 17, 18	Saturday & Sunday	CLOSED
Aug. 19	Monday	Close at 4:30 p.m.
Aug. 20	Tuesday (Registration)	Close at 6:30 p.m.
Aug. 21	Wednesday	Close at 4:30 p.m.
Aug. 22	Thursday (Registration)	Close at 6:30 p.m.
Aug. 24, 25	Saturday & Sunday	CLOSED
Aug. 26	Begin Fall Semester Hours	
Aug. 31	Saturday	CLOSED
Sept. 1, 2	Sunday & Monday	CLOSED
Nov. 27	Wednesday	Close at 4:30 p.m.
Nov. 28-30	Thursday-Saturday	CLOSED*
Dec. 1	Sunday	CLOSED*
Dec. 7	Saturday	9:00 a.m. - 4:30 p.m.
Dec. 8	Sunday	1:00 p.m. - Midnight
Dec. 9-11	Monday-Wednesday	Close at Midnight
Dec. 12	Thursday	Close at 7:00 p.m.
Dec. 14-15	Saturday & Sunday	CLOSED
Dec. 16-19	Monday-Thursday	Close at 4:30 p.m.
Dec. 21-25	Saturday-Wednesday	CLOSED
Dec. 26	Thursday	Close at 4:30 p.m.
Dec. 28-29	Saturday & Sunday	CLOSED
Dec. 30, 31	Monday & Tuesday	Close at 4:30 p.m.
Jan. 1	Wednesday	CLOSED
Jan. 2	Thursday	Close at 4:30 p.m.
Jan. 4, 5	Saturday & Sunday	CLOSED
Jan. 6-10	Monday-Friday	Close at 4:30 p.m.*
Jan. 11-12	Saturday & Sunday	CLOSED
Jan. 13	Begin Spring Semester Hours	

* If possible to have a Special Opening, hours will be posted nearer the time.

New Editor Makes Predictions

Hello sports fans, my name is Allen Stone and I'm the new sports editor for the *Shield*.

This is my first year at USI and I'm expecting great things from the university. I transferred from Henderson Community College in Henderson, Kentucky.

I'm a junior majoring in journalism. I played three years of high school football at Union County High in Morganfield Kentucky. I graduated in 1982. I also wrestled for two years and also played one year of college football.

My job this year will be to keep you informed of the sports that is happening here on campus, in the tri-state area, and also throughout this great country of ours. Any ideas that you the reader have will be greatly appreciated.

Now that baseball is coming to an end I've asked my best friend and world's greatest sports predictor "Stoney the Sleuth" to make his choices for the division winners for each division in major league baseball.

Let's start in the National League in the hot Eastern Division race. With

the New York Mets and the St. Louis Cardinals who are both playing excellent baseball. With Dwight Gooden the Mets have the best pitcher in baseball and with the hitting of Darryl Strawberry, George Foster, and Gary Carter the Mets have a clear hitting advantage. The Cardinals though have the second best pitcher in the league with Joaquin Andujar, the world's greatest shortstop in Ozzie Smith and of course seedster Vince Coleman don't look for the Cardinals to go down without a fight. The Sleuth picks the Mets by one game.

In the National League west the Los Angeles Dodgers will be a run away winner in that division by at least five games. That puts the Mets against the Dodgers for the pennant. The Mets will take the pennant 3 games to 2. Also in the National League Pete Rose of the Cincinnati Reds will surpass Ty Cobb as baseball's greatest hitter. Congratulations Pete.

In the American League in the eastern division the New York Yankees led by Evansville native Don Mattingly and fleet-footed Rickey Henderson

will overtake the Toronto Blue Jays and win by two games.

While in the Western Division the California Angeles will hold on to their slim lead and win the division by beating the Kansas City Royals. The Yankees will beat the Angeles 3 games to 0 to win the pennant.

So this looks like it will be a New York World Series with the Mets playing the Yankees. The Mets will have the advantage in the pitching department with the likes of Dwight Gooden and Ron Darling but the Yankees will have the distinct hitting edge because of the likes of Mattingly, Henderson, and Dave Winfield.

Look for the Yankees to take the series 4 games to 3. Mattingly will win the MVP for the series. You can look for Dwight Gooden of the Mets to win both the Cy Young award and the MVP for the National League. In the American League look for Rickey Henderson of the Yankees to win the MVP of the league while pitcher Ron Guidry also of the Yankees will win the Cy Young.

See you next issue!

Soccer Eagles Ready to Play

by Allen Stone

Coach Mike Ferrell's Soccer Eagles had a busy Labor Day weekend as they played three games in North Carolina. The Eagles were hoping to come back with a 2-1 record. Results of games were unavailable at press time as were the games played Sept. 4 against Cambell University and Sept. 11 against Ky. Wesleyan.

Coach Ferrell said that the teams goal this year was to beat Oakland City for the conference title then go to the NCAA. Here is the rest of the soccer games scheduled for September. Let's get out and support these fellows!

Sept. 14	Home	Vanderbilt
Sept. 21	Away	IU/PU Ft. Wayne
Sept. 25	Home	Bellarmine
Sept. 28	Home	Wright St.

Ball State Master's Course Will Augment USI Offerings

Ball State University will offer a master's level course in Production Management this fall on the campus of the University of Southern Indiana.

The course will be televised on the Indiana Higher Education Telecommunications System (IHETS) and will be received at USI on Saturday mornings from 9 a.m. to 12:30 p.m., beginning September 14.

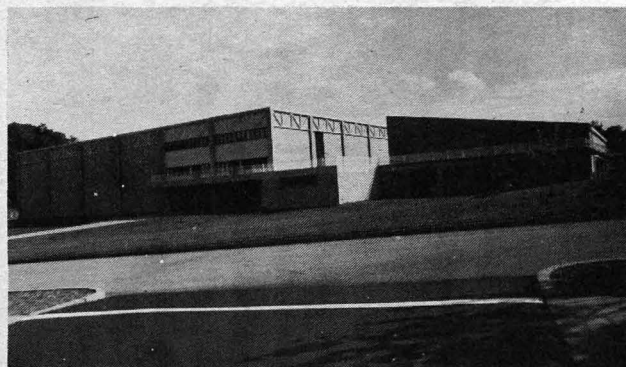
According to Dr. Robert L. Reid, USI vice president for academic affairs, this cooperative program between USI and Ball State is an effort to improve opportunities for Tri-State residents who wish to pursue graduate work.

The BSU course is applicable to the USI Master of Science in Industrial Management degree program, which recently was approved by the North Central Association of Colleges and Schools accrediting agency. It also meets the Ball State requirement for the Master of Business Administration degree pro-

gram. Two addition BSU graduate business courses will be offered at USI this winter, in BSU's winter quarter of classes. USI also has two other courses offered in its MSIM program, including Principles of Computer Aided Design and Manufacturing on Tuesday evenings, taught by Larry Goss, USI professor of engineering technology, and Personnel Management on Thursday evenings, taught by Dr. Emmet Edwards, USI associate professor of business.

Students who wish to enroll in the Ball State course may call USI, 464-1932, or attend an informational session with Ball State representatives from 4:30 to 7 p.m. next Tuesday, September 3, in Room 350 at the USI University Center.

The BSU courses each carry three quarter hours credit and will cost \$44 per quarter hour or a total of \$132 each. Students who have never attended Ball State before also must pay a \$15 matriculation fee.



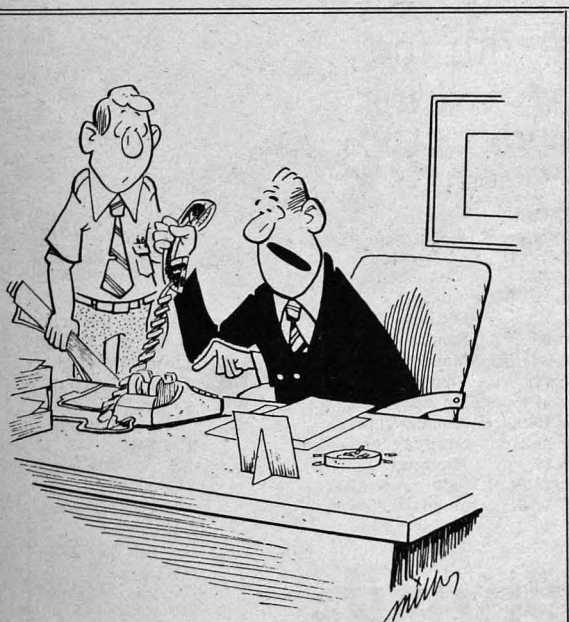
The PAC Building holds many opportunities for students.

Volleyball Team Serving Up

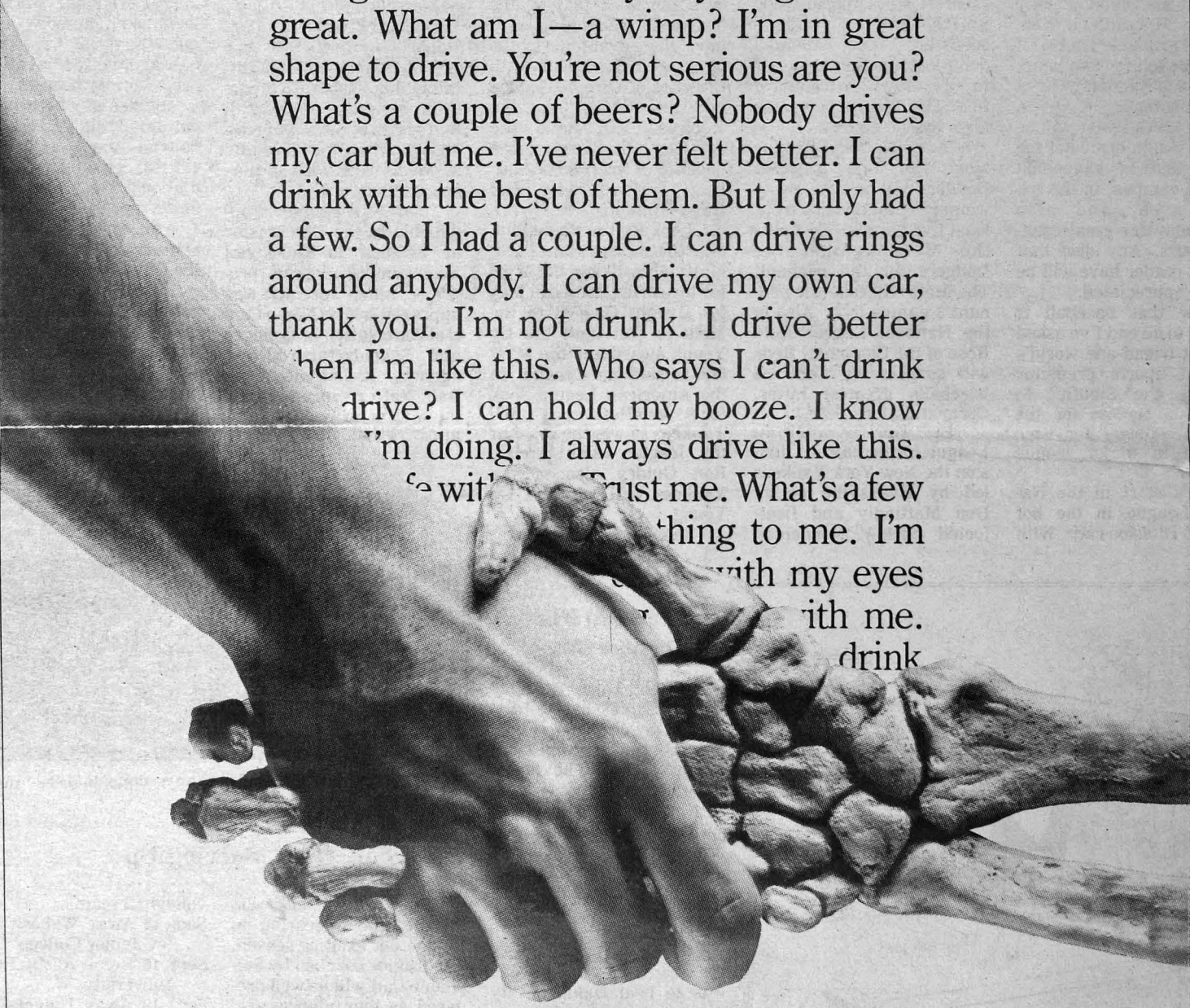
The USI women's volleyball team is gearing up for another exciting season. The Eagles coached by Stephanie Catt will be well prepared as they always are. With no injuries the Eagles will once again be flying on their way to another outstanding year. As of press time the team was playing in a tourney at the University of Missouri-St. Louis.

Here is the rest of the September schedule for the

volleyball team.
 Sept. 12 Away Wabash Valley Junior College
 Sept. 16 Home Austin Peay University
 Sept. 18 Away University of Evansville
 Sept. 25 Away Oakland City
 Sept. 28 Away IU/PU Indianapolis
 Results of the St. Louis game will be in the next issue.



"Every time I phone the Board of Education, I get the theme from Laurel and Hardy! What do you think that means, Mr. Turner?"



FAMOUS LAST WORDS FROM FRIENDS
TO FRIENDS. I'm perfectly fine. I can
drive with my eyes closed. There's nothing
wrong with me. Are you joking—I feel
great. What am I—a wimp? I'm in great
shape to drive. You're not serious are you?
What's a couple of beers? Nobody drives
my car but me. I've never felt better. I can
drink with the best of them. But I only had
a few. So I had a couple. I can drive rings
around anybody. I can drive my own car,
thank you. I'm not drunk. I drive better
when I'm like this. Who says I can't drink
and drive? I can hold my booze. I know
what I'm doing. I always drive like this.
Trust me. What's a few
beers? Nothing to me. I'm
driving with my eyes
closed. Trust me.
I can drink

**DRINKING AND DRIVING
CAN KILL A FRIENDSHIP.**