

1997 NCAA II Finalist • NCAA II Appearances: 1995, 1996, 1997, 1998, 2001

A Winning ATTITUDE

**UNIVERSITY OF
SOUTHERN INDIANA**



2001-02 Women's Basketball Media Guide

NCAA II ELITE EIGHT Appearances: 1997, 2001 • GLVC Championships: 1995, 1997, 1998, 2001

GE People

Family. Friends. Neighbors

**Committed to the continued prosperity
and safety of our community and the
environment.**



GE Plastics

Mt. Vernon, In.

2001-2002 USI Women's BASKETBALL SEASON

2001-2002 Women's Basketball Schedule

DATE	OPPONENTS	TIME
2001 Disney Division II Tip-off Classic <i>Disney's Wide World of Sports</i> Orlando, Florida		
Fri., November 9	vs. University of Nebraska-Omaha	Noon
Sat., November 10	vs Franklin Pierce College or University of Minnesota-Duluth	TBA
Sun., November 11	Opponent to be determined	TBA
Mon., November 19	MICHIGAN TECH UNIVERSITY	7:00 p.m.
Sat., November 24	@ University of Missouri-St. Louis*	5:30 p.m.
Mon., November 26	@ Quincy University*	5:15 p.m.
Thu., November 29	LEWIS UNIVERSITY*	5:15 p.m.
Sat., December 1	UNIVERSITY OF WISCONSIN-PARKSIDE*	1:00 p.m.
Thu., December 6	@ University of Indianapolis*	4:30 p.m.
Sat., December 8	@ Northern Kentucky University*	4:30 p.m.
Sat., December 15	GRACE COLLEGE	5:15 p.m.
Tue., December 18	NORTHERN MICHIGAN UNIVERSITY	5:15 p.m.
Fri., December 28	UNIVERSITY OF ILLINOIS-SPRINGFIELD	6:00 p.m.
Sun., December 30	@ Ferris State University	1:00 p.m.
Thu., January 3	KENTUCKY WESLEYAN COLLEGE*	5:15 p.m.
Thu., January 10	QUINCY UNIVERSITY*	5:15 p.m.
Sat., January 12	SOUTHERN ILLINOIS UNIVERSITY EDWARDSVILLE*	5:15 p.m.
Thu., January 17	@ University of Wisconsin-Parkside*	5:30 p.m.
Sat., January 19	@ Saint Joseph's College*	1:00 p.m.
Thu., January 24	NORTHERN KENTUCKY UNIVERSITY*	5:15 p.m.
Sat., January 26	BELLARMINE UNIVERSITY*	5:15 p.m.
Sat., February 2	UNIVERSITY OF MISSOURI-ST. LOUIS*	5:15 p.m.
Thu., February 7	@ Southern Illinois University Edwardsville*	5:30 p.m.
Sat., February 9	@ Lewis University*	1:00 p.m.
Thu., February 14	SAINT JOSEPH'S COLLEGE*	5:15 p.m.
Sat., February 16	UNIVERSITY OF INDIANAPOLIS*	5:15 p.m.
Thu., February 21	@ Bellarmine University*	4:45 p.m.
Sat., February 23	@ Kentucky Wesleyan College*	5:15 p.m.

Great Lakes Valley Conference Tournament
(Roberts Stadium, Evansville, Indiana)
Wed., February 27–Sat., March 2

NCAA Division II Tournament
Thu., March 7–Sun., March 10: Great Lakes Regional (site to be determined)
Wed., March 20–Sat., March 23: Elite Eight (Mayo Civic Center in Rochester, Minnesota)

*GLVC Game; HOME GAMES IN CAPS; All Times are CST

Table of Contents

About USI	2-3
H. Ray Hoops, President	4
Steve Newton, Director of Athletics	4
About USI from the Student Athletes	5
2001-02 Women's Basketball Outlook	6
Women's Basketball Coaching Staff	
Rick Stein, Head Coach	7
LeAnn Freeland, Asst. Coach	8
Randa Gatling, Asst. Coach	8
2001-02 USI Roster	9
Meet the Screaming Eagles	10-15
2001-02 USI Opponents	16-17
2000-01 Statistics and Results	18
2000-01 GLVC Standings and All-GLVC Teams	19
USI Record Book	20-23
Varsity Club All-Americans and Super Sponsors	24
USI Quick Facts	25
<hr/>	
Credits	
Layout & Design	Dan McDonnell
Writing	Ray Simmons
Photography	Elizabeth Courtney
.....	Mark Brendal
.....	LaVerne Jones

About the University of **SOUTHERN INDIANA**

Location

Founded in 1965, the University of Southern Indiana is located in Evansville, the state's third largest city. From its picturesque site on the Ohio River, Evansville is a comfortable drive from the major metropolitan areas of Indianapolis, Cincinnati, Louisville, Nashville, and St. Louis.

Academic Life

The University enrolls over 9,300 students and offers undergraduate majors in 60 areas of study. Several graduate degree programs also are available.

Campus Life

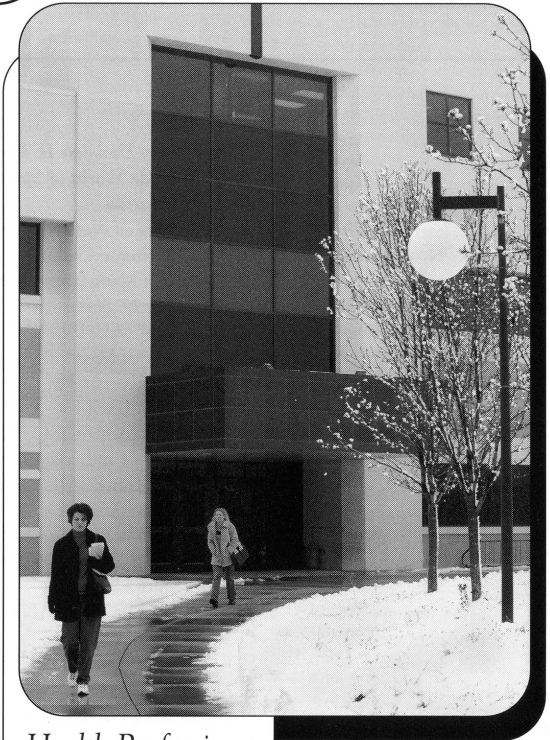
Beyond the classroom, students have opportunities to participate in more than 80 organizations offering co-curricular and extra-curricular activities. Special interest clubs, student government, sororities and fraternities, music and drama groups, and other organizations enable the students to enjoy and contribute to campus life.

Residence Life

USI offers two kinds of housing. One is the conventional apartment and the other is suite-style housing in a residence hall. Computer labs, laundromats, a convenience store, outdoor recreational areas, and student lounges contribute to an efficient living environment that has proven overwhelmingly popular with students. A meal plan is available in the University Center. More than 2,500 students live on campus.

Financial Assistance

Since USI is the most affordable four-year institution in the state of Indiana, many families find that they can handle the cost of a USI education without financial aid. Many others qualify for need-based financial aid packages, including grants, loans, and jobs.



Health Professions



Residence Life Office

About the University of **SOUTHERN INDIANA**

Degrees offered at USI

Undergraduate Degree Programs

The University of Southern Indiana confers nine undergraduate degrees: Bachelor of Arts, Bachelor of Science, Bachelor of Science in Nursing, Bachelor of General Studies, Bachelor of Social Work, Associate of Arts, Associate of Science, Associate of Science in Nursing, and Associate of Science in Occupational Therapy Assisting.

Baccalaureate Degree Programs

School of Business

• Accounting, Applied Computer Science • Business Administration (students may concentrate in the following areas of interest: Accounting, Computer Information Systems, Entrepreneurship/Small Business, Finance/Economics, Management, Marketing, or Office Information Systems) • Business Education • Computer Information Systems • Economics • Finance • Management • Marketing

Bower-Suhrheinrich School of Education and Human Services

• Elementary Education (includes Coaching, Computers, Junior High/Middle School, and Kindergarten endorsements) • Exercise Science • Physical Education • Senior High/Junior High/Middle School Education (grades 5-12) – certification is available for most majors • Social Work

Division of Extended Services

• General Studies

School of Liberal Arts

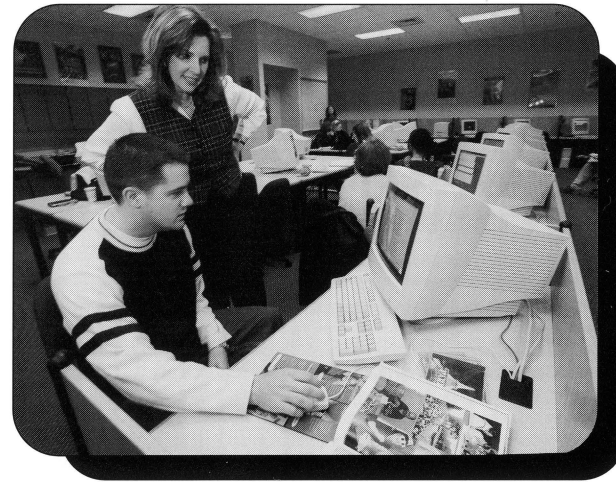
• Advertising/Public Relations • Art • Computer Publishing/Journalism • English • French • German • History • Interpersonal-Organizational Communications • Philosophy • Political Science • Psychology • Radio-Television • Sociology (concentration in Criminal Justice is available) • Spanish • Theatre Arts

School of Nursing and Health Professions

• Dental Hygiene Education • Health Occupations Education • Health Services • Nursing • Occupational Therapy • Radiologic and Imaging Sciences

Pott School of Science and Engineering Technology

• Biology • Biophysics • Chemistry • Civil Engineering Technology • Electrical Engineering Technology • Geology • Industrial Supervision • Mathematics • Mechanical Engineering Technology



Associate Degree Programs

School of Business

• Administrative Support Systems • Business • Computer Informations Systems

Bower-Suhrheinrich School of Education and Human Services

• Early Childhood Education

School of Liberal Arts

• Communications • Social Science

School of Nursing and Health Professions

• Dental Assisting • Dental Hygiene • Nursing • Occupational Therapy Assisting • Radiologic Technology • Respiratory Therapy

Pre-Professional Curricula

• Pre-Chiropractic • Pre-Dentistry • Pre-Engineering • Pre-Forestry • Pre-Law • Pre-Medical Technology • Pre-Medicine • Pre-Optometry • Pre-Osteopathy • Pre-Pharmacy • Pre-Physician Assistant • Pre-Physical Therapy • Pre-Podiatry • Pre-Veterinary

Graduate Programs

• Master of Arts in Liberal Studies • Master of Business Administration • Master of Health Administration • Master of Science in Education • Master of Science in Industrial Management • Master of Science in Accountancy • Master of Science in Nursing • Master of Science in Occupational Therapy • Master of Social Work



H. Ray Hoops, President

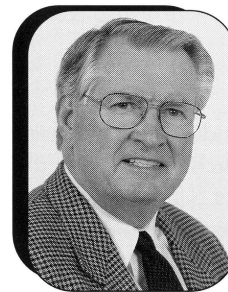
A native of Illinois, **H. Ray Hoops** received his undergraduate degree from Eastern Illinois University and master's and doctoral degrees in Audiology and Speech Sciences from Purdue University. He also completed an M.B.A. at Moorhead State University.

His career as a scientist and educator has included a faculty appointment jointly at the University of Michigan and Wayne State University. He published extensively and was nationally recognized for his contributions in the areas of rehabilitation of post-surgical patients with cancer of the larynx and in the analysis of language dynamics resulting from brain damage. Among his numerous publications in a variety of behavioral and medical journals was the report on a study which received the National Research Award, the highest honor of the American Speech and Hearing Association. Dr. Hoops also was named Fellow of the Association.

His administrative appointments included the directorship of the Division of Marketing in the U.S. Department of Health, Education, and Welfare. He received two national service awards for that work. He also was a Senior Fulbright-Hayes Research Scholar in the College of Medicine at the University of the Philippines. Other appointments included dean of the Graduate College of the University of Northern Iowa, associate vice chancellor for Academic Affairs for the Oregon State System of Higher Education, vice president for Academic Affairs at North Dakota State University and president of South Dakota State University.

In the six years prior to becoming the second president of the University of Southern Indiana in 1994, Dr. Hoops served as the vice chancellor for Academic Affairs at the University of Mississippi. While at "Ole Miss," Dr. Hoops received the National Council of State Governments Association Award for his pioneering work on Project '95, a blueprint for the reform of education in the state of Mississippi. He also received the Peterson's Guide Award for contributions to the education of minority students in the innovative and highly successful graduate participation initiative.

Dr. Hoops serves as a member of the Deaconess Hospital Board of Directors, the Welborne Foundation Board of Directors, the Salvation Army Advisory Board, the Youth Resources of Southwestern Indiana Board of Directors, and the WNIN Board of Directors.



**Steve Newton
USI Director of Athletics**

Steve Newton, a native of Terre Haute, Ind., was appointed athletic director in 1995.

Named to the NCAA II Great Lakes Regional Advisory Committee in 1997, Newton has brought enthusiasm and pride to the University and the Athletic Department. With an emphasis on community service, he has directed the creation of the Eagle Math program for grade school students, the Letterwinners Club, and the Screaming Eagles Scholarship program.

Newton also has placed an importance on assisting student athletes to reach their full potential both academically and athletically. To help the student athlete, he has overseen the creation of the extended aid program for fifth-year students.

Prior to taking the position at USI, Newton was serving as an assistant athletic director at the University of South Carolina. He was the head basketball coach at South Carolina from 1991 to 1993.

His duties at South Carolina included serving as the university representative for pre-Olympic preparations for the 1996 Olympic Games in Atlanta and the South Carolina steering committee for the Olympics.

Newton served as head coach at Murray State University from 1985 to 1991. During his eight seasons as head coach, he was 136-100 (.576). His Murray State team's best run in the NCAA Tournament was in 1988 when it defeated North Carolina State University before losing to eventual national champion University of Kansas, 61-58.

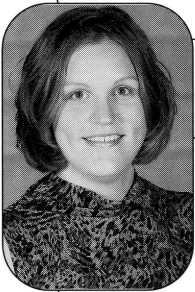
As a head coach, Newton was named the Ohio Valley Conference Coach of the Year in 1988 and 1990 and National Association of Basketball Coaches District VII Coach of the Year in 1988. He led Murray State to four consecutive Ohio Valley Conference championships and post-season tournament appearances (1988-91).

Newton received a bachelor's degree in physical education and master's in education from Indiana State University. He was named a member of the Indiana Basketball Hall of Fame Silver Anniversary team in 1984. Newton and his wife Kathy have four children—daughter LeAyer, and sons Harv, Jay, and Royce.

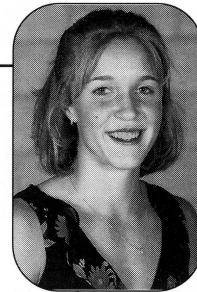
What the players say about USI



“USI has such an inviting atmosphere. The campus is beautiful and the people are all very friendly. The coaching staff has been extremely helpful.”
— **Jessica Stuckman, Sophomore**



“As soon as I stepped on campus for my visit, I knew USI was a great school. There is a great atmosphere of friendly people that care.”
— **Kim Witkowiak, Senior**



“USI has such a warm, comfortable atmosphere that you feel the moment you step on campus. The staff goes above and beyond the call of duty to make sure everyone succeeds.”
— **April Williams, Freshman**



“USI has the total package for me – a great biology program and great basketball. It just fits me.”
— **Stacy Karzin, Junior**

Women's Basketball **OUTLOOK**

The University of Southern Indiana is coming off the second best season in the history of the program, seeing the squad finish the year in the first round of the NCAA Division II Elite Eight. The Screaming Eagles produced a 28-4 overall record, won a share of the Great Lakes Valley Conference regular season title with a 17-3 league record, won their second GLVC Tournament crown and their second NCAA Division II Great Lakes Regional championship. USI also ranked sixth nationally in the final poll of the season.

Much of the credit for last year's elite season must be given to the USI coaching staff, who directed the team to 13 more wins in 2000-01 than in 1999-2000.

The Eagles stepped into the spotlight of Division II under the guidance of Head Coach **Rick Stein**. The third-year head coach was named the GLVC Coach of the Year and has a record of 43-16 (.729) in two seasons.

Stein, who is entering his 11th season with the USI program as a head coach and assistant, will have to reload part of the squad's firepower with the graduation of four seniors, three starters, from last year's team. Gone are All-GLVC performers Natalie Glaser and Liz Prewett, part-time starter Casey Nations, and super-sub Karrie Hochgesang. The four seniors averaged 39.5 points of USI's 85.9 points per contest.

While the graduating players will be missed, USI returns two All-GLVC performers and the 2001 GLVC Freshman of the Year.

Taking the mantle of leadership is senior guard/forward **Casey Hughes** (Bicknell, Indiana). Hughes, who was second team All-GLVC as a freshman and honorable mention as a sophomore, became a real force for the Eagles in February and March last season when she averaged 12.9 points and 4.9 rebounds. The senior, who averaged 10.9 ppg and 4.4 rpg for the year, finished the season ranked 8th in scoring and 15th in rebounds all-time at USI.

Hughes, who missed the Elite Eight with a shoulder injury, also became the eighth Eagle to score over 1,000 points in her career at USI.

Hughes will be joined by senior point guard **Jasmine Moore** (Chicago, Illinois), who was second team All-GLVC in 2000-01.

Moore directed the USI offense last season, averaging 4.8 assists per contest, and was a leader on defense, averaging 2.2 steals a game. She also averaged 9.7 ppg in addition to dishing the ball to her teammates.

In the frontcourt, the Eagles will look for the same production they received from last year's GLVC Freshman of the Year **Jessica Stuckman** (Quincy, Illinois). Stuckman, a forward, was third on the team with 14.8 ppg and second on the squad with 6.4 rpg despite missing eight games with a stress fracture.

Returning with Hughes and Stuckman in the frontcourt are senior forward/center **Michelle Irwin** (Louisville, Kentucky) and senior center **Kimberly Witkowiak** (Milwaukee, Wisconsin).

A complete season from Irwin, who averaged 5.5 ppg and 4.3 rpg, will be key for the Eagles in 2001-02. Irwin has missed 12 games the last two seasons due to illness.

In the backcourt, Stein and the Eagles have three strong returnees in junior **Bethany Miller** (Princeton, Indiana), sophomore **Erin Wall** (New Albany, Indiana), and senior **Mevett Wooley** (Carbondale, Indiana).

Miller played in all 32 contests, averaging 4.4 ppg and was second on the team with 64 steals. Wall saw increased action as the season went along, averaging 3.3 ppg in 31 games, 6.7 in the final nine contests.

Wooley saw limited playing time last season due to knee injuries, but still averaged 2.2 ppg.

To fill the void left by the departing seniors, Stein has five newcomers—three junior college players and two freshmen.

From Illinois, junior forward **Sarah McIntosh** (Cabery, Illinois) and junior center **Stacy Karzin** (Moline, Illinois) transferred to USI.

McIntosh led Kankakee Community College with 20.0 ppg and 5.8 rpg and was named first team All-Region. Karzin comes to USI from Blackhawk College where she posted 14.4 ppg and snatched 10.6 rpg and was named first team All-Region.

Out of Florida is junior forward/center **Africa Sherrod** (Ft. Lauderdale, FL). Sherrod averaged 7.1 ppg and 7.5 rpg in 2000-01, helping TCC to the Florida State Tournament crown and a third place finish nationally.

Coming to USI from the high school ranks are freshman guards **Amber Calhoun** (Evansville, Indiana) and **April Williams** (Lyons, Indiana).

Calhoun, who averaged 25.4 ppg, 4.5 rpg, and 4.0 steals as a senior for Bosse High School, was named All-City and All-SIAC all four seasons. Williams, who averaged 8.1 ppg and 3.7 assists as a senior at White River Valley High School, was AP Honorable Mention All-State, Regional MVP, and first team *Terre Haute Tribune-Star* All-Area.

The Screaming Eagles must travel a hard road to surpass last season's accomplishments.

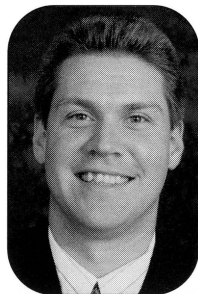
USI will face four of the six teams that made it to the NCAA II Regional Tournament last season. Home court will be in USI's favor, though, as both Michigan Tech University and Northern Michigan University will come to the PAC, a place where USI has won 14 consecutive games. The Eagles will play Northern Kentucky University and Southern Illinois University Edwardsville in a home-and-home series.

Revenge may be on the Eagles' minds when they travel to Florida on November 9 for the Disney Division II Tip-Off Classic at Disney's Wide World of Sports. USI will start the three-day tournament with a game against the University of Nebraska-Omaha, but could meet up with Columbus State University, the team that eliminated the Eagles from the Elite Eight last season, on the final day.

In addition to a tough conference schedule, the Eagles will face Ferris State University on the road and NCAA Division I Indiana State University in an exhibition game.

USI's first action at the PAC will be Monday, November 19, when it hosts Michigan Tech. The Eagles will open conference play Saturday, November 24, when they travel to the University of Missouri-St. Louis. The Eagles will open their GLVC home schedule Thursday, November 29, when they host Lewis University.

USI Head Coach Rick Stein



Rick Stein enters his third season at the helm of the University of Southern Indiana women's basketball program after leading the Screaming Eagles to their fourth Great Lakes Valley Conference Championship, second GLVC Tournament Championship, fifth NCAA Division II Tournament appearance, and second NCAA II Elite Eight appearance.

In just his second season with the Eagles, Stein led USI to a 28-4 record and the biggest season-to-season turn around in school history (+13 wins). In the process, Stein earned GLVC Coach of the Year honors.

In his first season, Stein went 15-12 overall, tying the record for most victories for a rookie head coach and setting the record for best winning percentage for a rookie coach (.556). Stein's overall winning percentage is the best in USI women's basketball history.

Stein is a 1992 USI graduate with a Bachelor of Science degree in business administration. He joined the Eagles program in 1991-92 as a graduate assistant under former Head Coach Chancellor Dugan. He was promoted to head assistant coach in 1994 and promptly helped Dugan and the Eagles to their best season as a varsity sport at USI.

In his eight seasons, Stein helped Dugan amass a 159-73 record with four straight NCAA Division II Tournament appearances (1994-95 to 1997-98) and three Great Lakes Valley Conference titles. The Eagles were the NCAA II Tournament finalist and produced the only perfect season in GLVC history (20-0) in 1997.

Since Stein became the assistant coach, coordinating recruiting and scouting in 1994-95, Southern Indiana has a record of 119-28, an .809 winning percentage. A native of Crete, Illinois, Stein was a two-year starter on the Southern Indiana men's basketball team from 1989-91. During his tenure as a player, he helped



USI to an appearance in the NCAA Division II South Central Regional in 1989-90 and a win over Division I University of Wisconsin in 1990-91. Before joining USI's team, he played basketball at Parkland College in Champaign, Illinois, and earned an associate degree. Parkland finished as the NJCAA Division II runner-up in 1988 and fourth nationally in 1989.

Stein and his wife Kari have a son, Alex, and a daughter, Mallorie.

Stein at USI

<u>Year</u>	<u>Record</u>	<u>Coaching Position</u>	<u>Season Highlights</u>
1991-99	159-73	Assistant Coach	3 GLVC Championships 2 GLVC Tournaments 1 GLVC Tournament Title 4 NCAA II Tournaments 1 Elite Eight 1997 National Runner-up
1990-00	15-12	Head Coach	Set USI record for winning percentage by a rookie head coach; GLVC Tournament
2000-01	28-4	Head Coach	GLVC Coach of the Year co-GLVC Champions GLVC Tournament Champions NCAA II Tournament NCAA II Elite Eight
10 seasons	202-89	8 seasons as Assistant Coach; 2 seasons as Head Coach;	2 NCAA II Elite Eight appearances; 5 NCAA II Tournament appearances; 4 GLVC Championships; and 4 GLVC Tournament appearances

Women's COACHING STAFF



LEANN FREELAND
Assistant Coach

Assistant Coach **LeAnn Freeland** begins her third season on the Eagle's bench. A native of Sims, Illinois, Freeland assists with recruiting, on-the-court coaching, game scouting, and individual player assessments. She has recently completed her master's degree at USI in elementary education.

Freeland, a 1998 USI graduate with a bachelor's degree in elementary education, spent two years in the Warrick County (Indiana) School Corporation. As a coach, Freeland had an overall record of 26-3, leading the Castle High School freshman team to a 13-1 record in 1997-98 and Castle Junior High School's eighth grade team to a 13-2 record in 1998-99.

In her four-year playing career at USI, Freeland was a three-time *Women's Basketball Coaches Association/Kodak All-American* and a two-time *GTE/College Sports Information Directors Academic All-American*. She holds the USI career records for scoring (2,269 points), rebounds (961), field goals made (887), and free throws made (738).

The Eagles were 91-24 (.791) during Freeland's four years as a player, including an appearance in the 1997 NCAA Division II Tournament Finals, three NCAA II Tournament berths, and two GLVC titles.



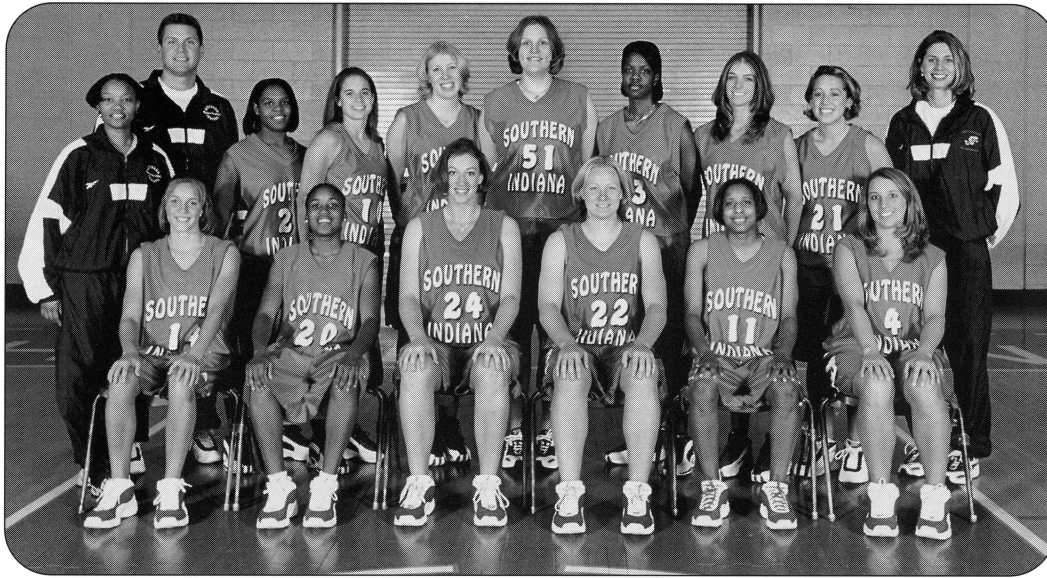
RANDA GATLING
Assistant Coach

A 1999 USI graduate with a bachelor's degree in social work, Assistant Coach **Randa Gatling** returns for her third season with the Eagles.

Gatling started her career at Evansville Central High School. She served as the head coach for the first-ever Central girl's freshman basketball team and was instrumental in its creation in 1998-99. Gatling volunteered two summers as a head coach for the Evansville girls' YMCA team in the midnight basketball league and in tournaments at the University of Evansville for two summers.

During her playing days at USI, Gatling, a native of Evansville, Indiana, was a member of the 1997 NCAA Division II Tournament Finalist team, 1995, 1996, 1997, 1998 teams which appeared in the NCAA II Tournament, and the 1995, 1997, and 1998 Great Lakes Valley Conference Championship teams. The Eagles were a dominating 100-16 (.862) during Gatling's four years as a player, including an amazing 67-9 (.881) in the GLVC.

2001-2002 SCREAMING EAGLES



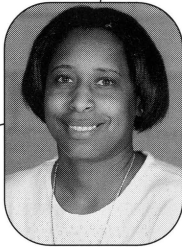
Back Row (L-R): Assistant Coach Randa Gatling, Head Coach Rick Stein, Amber Calhoun, Erin Wall, Stacy Karzin, Kim Witkowiak, Africa Sherrod, Casey Hughes, Sarah McIntosh, Assistant Coach LeAnn Freeland.

Front Row (L-R): April Williams, Jasmine Moore, Michelle Irwin, Jessica Stuckman, Mevett Wooley, Bethany Miller.

2001-2002 Roster

NO.	NAME	POS.	CL.	HT.	HOMETOWN (H.S., Previous School)	NO.	NAME	POS.	CL.	HT.	HOMETOWN (H.S., Previous School)
4	Bethany Miller	G	Jr.	5'8"	Princeton, IN (Princeton)	21	Sarah McIntosh	F	Jr.	5'9"	Caberly, Illinois (Tri-Point, Kankakee C.C.)
10	Erin Wall	G	So.	5'8"	New Albany, IN (New Albany)	22	Jessica Stuckman	G/F	So.	5'11"	Quincy, IL (Notre Dame HS)
11	Mevett Wooley	G	Sr.	5'6"	Carbondale, IL (Carbondale, Seminole Community College)	24	Michelle Irwin	C	Sr.	6'2"	Louisville, KY (Eastern, Univ. of Louisville)
12	Casey Hughes	G/F	Sr.	5'11"	Bicknell, IN (North Knox)	33	Africa Sherrod	F/C	Jr.	6'1"	Ft. Lauderdale, FL (Boyd Anderson, Tallahassee C.C.)
14	April Williams	G	Fr.	5'7"	Lyons, IN (White River Valley)	34	Stacy Karzin	C	Jr.	6'1"	Moline, Illinois (Moline, Black Hawk College)
15	Amber Calhoun	G	Fr.	5'6"	Evansville, IN (Bosse)	51	Kimberly Witkowiak	C	Sr.	6'4"	Milwaukee, WI (Vincent, Univ. of Nevada-Reno)
20	Jasmine Moore	G	Sr.	5'6"	Chicago, IL (Morgan Park, John A. Logan College)	Head Coach: Rick Stein (3rd season) Assistant Coach: LeAnn Freeland (3rd season) Assistant Coach: Randa Gatling (3rd season)					

Meet the 2001-2002 SCREAMING EAGLES

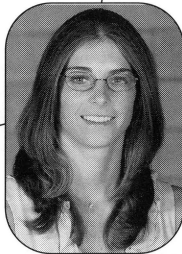
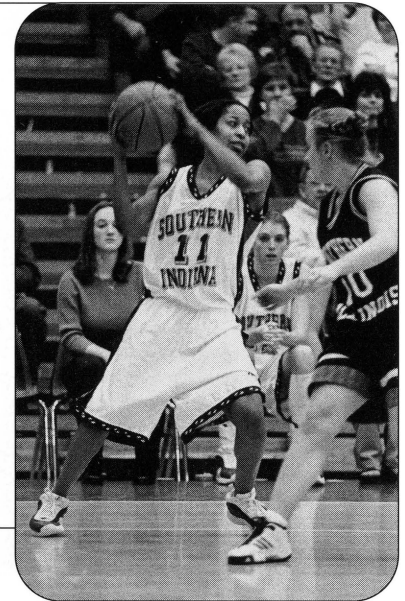


Mevett Wooley #11
5'6" Senior, Guard
Carbondale, Illinois
MAJOR: Physical Education

2000-01: Played in only 19 contests after being slowed by knee injuries...averaged 2.2 ppg and 1.0 rpg...dropped in a season-high eight points against Northwest Missouri State University and nine assists versus Saint Joseph's College. **TRANSFER:** Transferred to USI from Seminole Community College in Sanford, Florida...helped SCC to a 27-6 record and a 14th national ranking in 1999-2000...was named Florida Community College Activities Association All-Tournament and All-Mid Florida Conference...averaged 13.0 points, 4.5 assists, two rebounds, and two steals...had a season-high 18 points against Broward Community College and East Central Missouri College. **HIGH SCHOOL:** Lettered in basketball and track at Carbondale High School. **PERSONAL:** Born March 28, 1979...enjoys using the Internet.

Career Statistics

	G/GS	FGM/FGA	PCT.	3FGM/FGA	PCT.	FTM/FTA	PCT.	REB.	AVG.	AST.	STL.	BLK.	TP.	AVG.	MIN.
00-01	19/ 0	13/ 45	.289	1/ 11	.091	14/ 20	.700	19	1.0	41	19	1	41	2.2	210



Casey Hughes #12
5'11" Senior, Guard/Forward
Bicknell, Indiana
MAJOR: Elementary Education

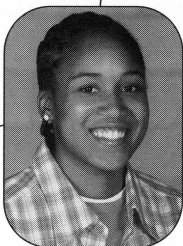
2000-01: Played in all but one contest, missing the NCAA Division II Elite Eight with a shoulder injury...averaged 10.9 ppg, 4.4 rpg, 2.2 steals, and 1.6 steals a game as a junior...had a career-high 30 points in the USI victory at Saint Joseph's College...also grabbed a season-high 10 rebounds at SJC...finished the season ranked eighth in scoring and 15th in rebound all-time at USI...became only the eighth player in USI history to score over 1,000 points in a career. **1999-2000:** Named honorable mention All-GLVC as a sophomore...led the team in scoring with 13.4 ppg and was third on the team with 5.1 rpg...also led the team by hitting 80 percent from the line (60-75)...moved into USI's top 20 all-time with 720 career points in two seasons...had a career-high 14 rebounds at home against the University of Wisconsin-Parkside...had a season-high 22 points against Saint Joseph's College. **1998-99:** Named second team All-GLVC, one of two freshmen named to the two league teams...led the Lady Eagles in scoring as a freshman, averaging 16.0 ppg, second in rebounding with 6.0 rpg, and 62 steals...ranked 12th in scoring and 16th in rebounding in the GLVC...played in 30 of 31 contests, started 28, and averaged 27.6 minutes per game...had a season-high 29 points against the University of Missouri-St. Louis and 12 rebounds against Bellarmine College...scored in double figures 25 times as a freshman...third on the team with 32 three-point field goals. **HIGH SCHOOL:** Averaged 22.8 ppg, 7.0 rpg, 3.7 assists, and 3.4 steals per game as a senior at North Knox High School...named first team All-State, Blue Chip All-Conference, All-Regional Team, sectional Most Valuable Player, Vincennes Sun-Commercial All-Area and Player of the Year, and Evansville Courier & Press first team All-Southwestern Indiana...also named a first team All-Star by Hoosier Basketball Magazine. **PERSONAL:** Born June 21, 1980...enjoys softball and swimming.

Career Statistics

	G/GS	FGM/FGA	PCT.	3FGM/FGA	PCT.	FTM/FTA	PCT.	REB.	AVG.	AST.	STL.	BLK.	TP.	AVG.	MIN.
98-99	30/28	172/361	.476	32/ 96	.333	103/148	.696	181	6.0	50	62	13	479	16.0	828
99-00	18/ 9	88/194	.454	5/ 20	.250	60/ 75	.800	91	5.1	18	26	14	241	13.4	463
00-01	31/24	133/274	.393	29/104	.279	53/ 72	.736	135	4.4	69	51	13	339	10.9	762
TOT.	79/61	293/829	.353	66/220	.300	216/295	.732	407	5.2	137	139	40	1,059	13.4	-



Meet the 2001-2002 SCREAMING EAGLES

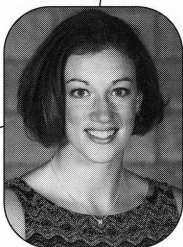


Jasmine Moore #20
5'6" Senior, Guard
Chicago, Illinois
MAJOR: Education

2000-01: Ran the Eagles offensively, dishing out 4.8 assists per game, and defensively with 2.2 steals per contest...ranked third in the GLVC in assists...named honorable mention All-GLVC...averaged 9.7 ppg... had a season-high 21 points at Bellarmine University, 11 assists at Lewis University, and nine rebounds at the University of Indianapolis. **TRANSFER:** Transferred to USI from John A. Logan College where she led the Lady Vols to the Region XXIV finals and finished with a 23-10 record...averaged 11.2 ppg 2.7 rpg, 3.1 assists, and 2.2 steals as a sophomore...named to the Region XXIV All-Tournament team in 1999-2000. **HIGH SCHOOL:** Lettered in basketball at Morgan Park High School...named the Chicago Defender of the Year as a senior. **PERSONAL:** Born April 27, 1980.

Career Statistics

	G/GS	FGM/FGA	PCT.	3FGM/FGA	PCT.	FTM/FTA	PCT.	REB.	AVG.	AST.	STL.	BLK.	TP.	AVG.	MIN.
00-01	31/26	108/275	.393	29/104	.279	56/78	.718	105	3.4	150	69	6	301	9.7	793

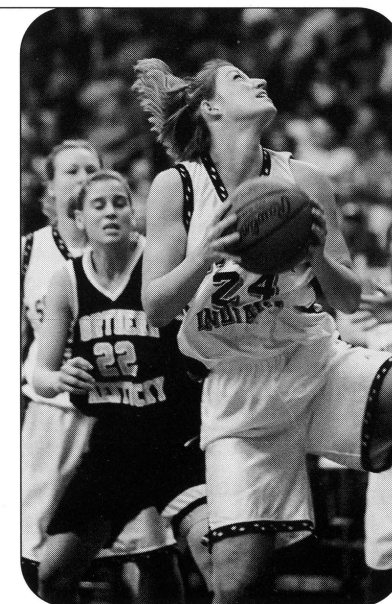


Michelle Irwin #24
6'2" Senior, Center
Louisville, Kentucky
MAJOR: Marketing

2000-01: Played in 26 games after missing the first month with an illness...averaged 5.5 ppg and 4.3 rpg off the bench for the Eagles...tied a career-high at USI with nine points against Northern Kentucky University at PAC Arena...also tied a career-high with eight rebounds in three different contests. **1999-2000:** Battled back from early-season ankle injuries to play in 20 games as a sophomore...averaged 3.0 ppg and 3.5 rpg...had a season-high nine points against Southern Illinois University Edwardsville and eight rebounds against nationally-ranked Northern Kentucky University...named Academic All-GLVC. **TRANSFER:** Transferred to USI from the University of Louisville...saw limited action in 12 contests, scoring three points and grabbing five rebounds. **HIGH SCHOOL:** Graduated from Eastern High School in Louisville...collected letters in basketball, softball, track, and volleyball...earned honorable mention All-State honors as a senior after averaging 16.0 ppg, 11.0 rpg, 2.0 steals, and 2.0 assists per game...had a career-high 23 points and 19 rebounds against Central Hardin High School...named All-Seventh Region as a senior and All-28th District as a junior and senior. **PERSONAL:** Born November 24, 1979.

Career Statistics

	G/GS	FGM/FGA	PCT.	3FGM/FGA	PCT.	FTM/FTA	PCT.	REB.	AVG.	AST.	STL.	BLK.	TP.	AVG.	MIN.
99-00	20/2	18/75	.240	0/0	.000	25/46	.543	70	3.5	13	2	17	61	3.0	305
00-01	26/5	52/108	.481	0/1	.000	38/105	.362	113	4.3	17	13	7	142	5.5	390
TOT.	46/7	70/183	.382	0/1	.000	63/151	.417	183	4.0	30	15	24	203	4.4	-



Meet the 2001-2002 SCREAMING EAGLES

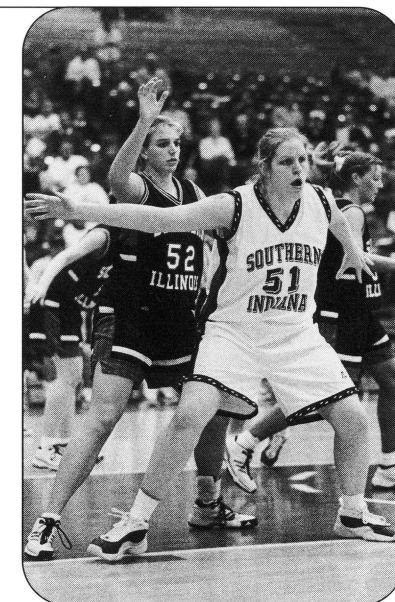


Kim Witkowiak #51
6'4" Senior, Center
Milwaukee, Wisconsin
MAJOR: Elementary Education

2000-01: Saw action in 26 contests for the Eagles, averaging 2.8 ppg and 1.8 rpg...had a season-high 11 points against Indiana Institute of Technology and five rebounds against Southern Illinois University Edwardsville and the University of Wisconsin-Parkside. **TRANSFER:** Played two seasons at the University of Nevada-Reno...averaged 1.2 ppg and 1.3 rpg for the Wolfpack, which won the Eastern Division of the Big West Conference in 1999-2000. **HIGH SCHOOL:** Earned eight letters competing in basketball, volleyball, and track and field at Milwaukee Vincent High School...helped MVHS to the Blue Division Championship in 1997-98. **PERSONAL:** Born March 26, 1980...enjoys volleyball, bowling, art, animals, and listening to music.

Career Statistics

	G/GS	FGM/FGA	PCT.	3FGM/FGA	PCT.	FTM/FTA	PCT.	REB.	AVG.	AST.	STL.	BLK.	TP.	AVG.	MIN.
00-01	26/0	30/70	.429	0/0	.000	13/30	.433	48	1.8	5	4	15	73	2.8	234

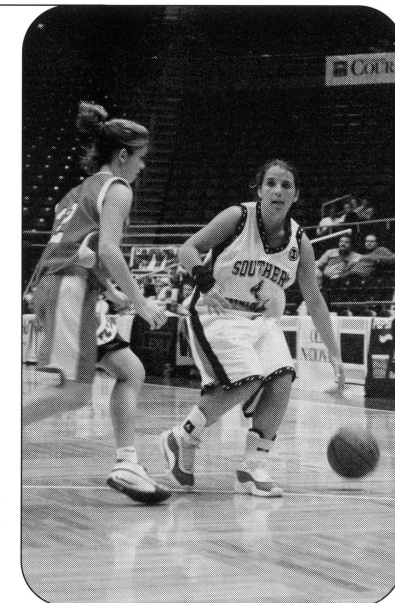


Bethany Miller #4
5'8" Junior, Guard
Princeton, Indiana
MAJOR: Exercise Science

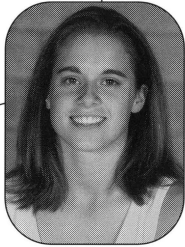
2000-01: Played in all 32 games for the Eagles, including a start in USI's NCAA II Elite Eight game...averaged 4.4 ppg, 2.4 rpg, and 3.2 assists per game as a sophomore...second on the team with 64 total steals...had a season-high 11 points at Southern Illinois University Edwardsville and at home against Kentucky Wesleyan College...also had a season-high eight assists against Purdue University-Calumet. **1999-2000:** Overcame injuries and illness at different points during the season to play in all 27 games and start the last 15 at the point guard position...led the team with 3.0 assists per contest and tied for third with 1.4 steals per game...averaged 5.1 ppg...had a career-high 16 points against the University of Wisconsin-Parkside and 10 assists and eight rebounds against Saint Joseph's College...named Academic All-GLVC as a freshman. **HIGH SCHOOL:** Earned letters in basketball, cross country, golf, and track at Princeton Community High School...became the PCHS career leader with 1,322 points and 364 assists...averaged 21.6 ppg, 8.7 rebounds, 5.3 assists, and 5.3 steals as a senior...was a starter on the PCHS team which advanced to the Indiana High School Final Four in 1996. **PERSONAL:** Born August 17, 1981...enjoys rollerblading and lifting weights.

Career Statistics

	G/GS	FGM/FGA	PCT.	3FGM/FGA	PCT.	FTM/FTA	PCT.	REB.	AVG.	AST.	STL.	BLK.	TP.	AVG.	MIN.
99-00	27/15	45/112	.402	3/ 16	.188	46/ 67	.687	74	2.7	80	38	2	139	5.1	578
00-01	32/11	43/111	.387	7/ 30	.233	47/ 70	.671	77	2.4	103	64	1	140	4.4	588
TOT.	59/26	88/223	.395	10/ 46	.217	93/137	.679	151	2.6	183	102	3	279	4.7	-



Meet the 2001-2002 SCREAMING EAGLES

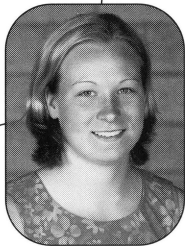
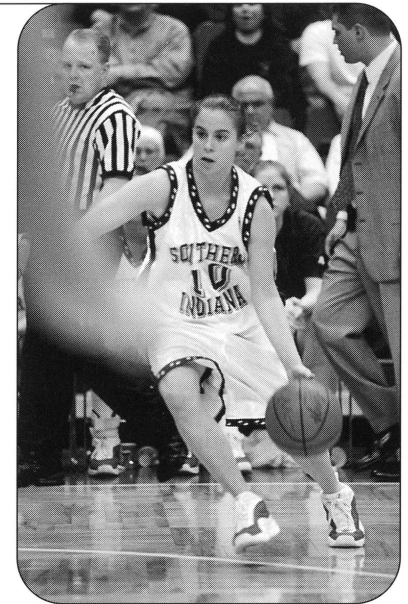


Erin Wall #10
5'8" Sophomore, Guard
New Albany, Indiana
MAJOR: Undecided

2000-01: Made increasing contributions to the team off the bench late in the season as USI pushed toward the NCAA II Elite Eight...average 3.3 ppg and 1.1 rpg as a freshman...had a season-high 12 points and six assists in the GLVC Tournament against Lewis University and four rebounds against Indiana University/Purdue University Ft. Wayne. **HIGH SCHOOL:** Graduated from New Albany High School...averaged 9.1 ppg, 2.9 rebounds, 3.3 assists, and 1.9 steals per game as a senior...helped lead NAHS to a 22-1 overall record...named to the All-Hoosier Hills Conference first team and was selected to the Hoosier Basketball Coaches Association All-Star team...holds the single-season record for free throw percentage (83 percent). **PERSONAL:** Born April 15, 1982.

Career Statistics

	G/GS	FGM/FGA	PCT.	3FGM/FGA	PCT.	FTM/FTA	PCT.	REB.	AVG.	AST.	STL.	BLK.	TP.	AVG.	MIN.
00-01	31/ 0	36/ 75	.480	18/ 43	.419	11/ 18	.611	33	1.1	44	11	0	101	3.3	363

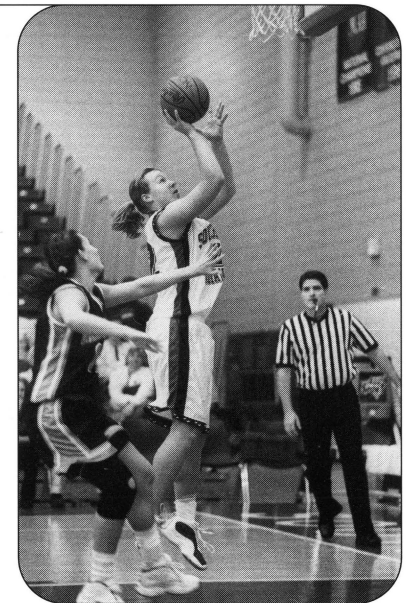


Jessica Stuckman #22
5'11" Sophomore,
Guard/Forward
Quincy, Illinois
MAJOR: Undecided

2000-01: Named the GLVC Freshman of the Year after averaging 14.8 ppg and 6.4 rpg in her first season with the Eagles...earned week one Player of the Week honors for the GLVC after averaging 28.2 ppg, 8.5 rebounds, and shot .818 from the field against Indiana University/Purdue University Ft. Wayne and Saint Joseph's College...had a season-high 30 points against Saint Joseph's College and 10 rebounds against Northwest Missouri State University...missed eight games in the middle of the campaign with an ankle injury. **HIGH SCHOOL:** Finished her career at Notre Dame High School as the second all-time leading scorer with 1,296 points...averaged 17.3 ppg, 9.1 rpg, 4.0 steals, and 3.0 assists as a senior at NDHS...was named All-State by the Illinois Basketball Coaches Association (first team) and the Associated Press (third team)...helped lead NDHS to a regional championship in 1999-2000 and to an appearance in the Illinois Class A Elite Eight...named first team All-State and second team All-State as a junior and senior in volleyball and first team All-State in soccer as a senior...helped lead NDHS to the volleyball state championships in 1998 and the state finals in 1999. **PERSONAL:** Born October 5, 1982.

Career Statistics

	G/GS	FGM/FGA	PCT.	3FGM/FGA	PCT.	FTM/FTA	PCT.	REB.	AVG.	AST.	STL.	BLK.	TP.	AVG.	MIN.
00-01	24/ 10	144/251	.574	0/ 1	.000	68/ 87	.782	153	6.4	24	37	4	356	14.8	538



Meet the 2001-2002 **NEWCOMERS**



Sarah McIntosh #21

5'9" Junior, Forward

Cabery, Illinois

MAJOR: Communication Study

TRANSFER: Transferred to USI from Kankakee Community College in Kankakee, Illinois...earned first-team All-Region honors and averaged 20.0 ppg (600 total points) and 5.8 rpg (174 total rebounds)...finished her career at Kankakee ranked sixth in scoring...helped Kankakee to a 55-14 record, a .797 winning percentage, and two regional finals in her career with the Lady Cavaliers. **HIGH SCHOOL:** Graduated from Tri-Point High School in Cullom, Illinois...named All-Area by the Bloomington/Normal (Illinois) Pontagraph in 1997-98 and 1998-99 in basketball and volleyball. The Kankakee Journal felt the same way about McIntosh's talents naming her All-Area in 1997-98 and 1998-99 in basketball and volleyball. **PERSONAL:** Born January 8, 1981.



Africa Sherrod #33

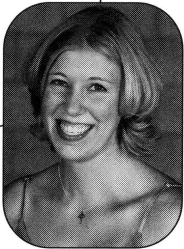
6'1" Junior, Forward/Center

Ft. Lauderdale, Florida

MAJOR: Criminology

TRANSFER: Transferring to USI from Tallahassee Community College in Florida...averaged 7.1 ppg and 7.5 rpg per contest for TCC in 2000-01...member of the 2000-01 TCC team which won the Florida State Tournament and placed third nationally. **HIGH SCHOOL:** Played basketball, volleyball, and track and field at Boyd Anderson High School and was the squad's Most Valuable Player as a junior and senior...averaged 12 ppg and 14.0 rpg as a senior. **PERSONAL:** Born January 23, 1981.

Meet the 2001-2002 **NEWCOMERS**



Stacy Karzin #34

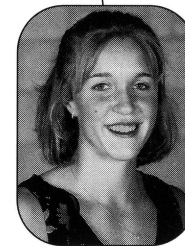
6'1" Junior, Center

Moline, Illinois

MAJOR: Biology

TRANSFER: Transferring to USI from Black Hawk College in Moline, Illinois...was the Black Hawk's Most Valuable Player and captain for the 2000-01 squad, averaging 14.4 ppg, 10.6 rpg, and 4.4 blocks per contest last season...a two-year letter winner helped lead Black Hawk to the Arrowhead Conference and the Region IV championships in 1999-2000 **HIGH SCHOOL:** Lettered in basketball at Moline High School in Moline, Illinois. **PERSONAL:** Born January 23, 1981.

HIGH SCHOOL: Lettered in basketball at White River Valley High School...named Associated Press Honorable Mention All-State and Hoosier Basketball Magazine All-State as a senior after averaging 8.1 ppg and 3.7 assists...earned All-Conference three straight seasons...named to the Terre Haute Tribune Star first team All-Area in 2000-01 and to the Bloomington Herald-Times first team All-Area in 1999-2000. **PERSONAL:** Born April 26, 1983.



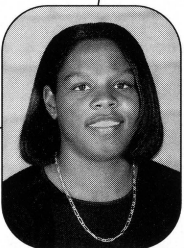
April Williams #14

5'7" Freshman, Guard

Lyons, Indiana

MAJOR: Political Science

HIGH SCHOOL: Lettered in basketball at Bosse High School...averaged 25.4 ppg, 4.5 rpg, and 4.0 steals as a senior...named All-City and All-SIAC for each of her seasons at BHS...finished her four-year career at BHS with 1,295 points...member of the USA Junior National All-Star team. **PERSONAL:** Born November 7, 1982.



Amber Calhoun #15

5'6" Junior, Guard

Evansville, Indiana

MAJOR: Undecided

2001-2002 Screaming Eagles **OPPONENTS**

Disney Division II Tip-Off Classic 2001 Disney's Wide World of Sports Orlando, Florida

Friday, November 9 at Orlando, FL
UNIVERSITY OF NEBRASKA-OMAHA
Location: Omaha, NE
Enrollment: 14,000
Nickname: Mavericks
Affiliation: NCAA II
Conference: North Central
Head Coach: Lisa Carlsen
2000-01 Record: 8-18

Saturday, November 10 at Orlando, FL
FRANKLIN PIERCE COLLEGE
Location: Rindge, NH
Enrollment: 1,450
Nickname: Ravens
Affiliation: NCAA II
Conference: Northeast-10
Head Coach: Sarah Behn
2000-01 Record: 8-18

or

UNIVERSITY OF MINNESOTA-DULUTH
Location: Duluth, MN
Enrollment: 9,300
Nickname: Bulldogs
Affiliation: NCAA II
Conference: NSIC
Head Coach: Karen Stromme
2000-01 Record: 21-11 (NCAA Tournament/13th in Final NCAA II Poll)

Sunday, November 11 at Orlando, FL
USI will face one of the following teams:
COLUMBUS STATE UNIVERSITY
Location: Columbus, GA
Enrollment: 5,500
Nickname: Cougars
Affiliation: NCAA II
Conference: Peach Belt
Head Coach: Jay Sparks
2000-01 Record: 31-1 (NCAA Elite Eight/3rd in Final NCAA II Poll)

CENTRAL MISSOURI STATE UNIVERSITY
Location: Warrensburg, MO
Enrollment: 11,000
Nickname: Jennies
Affiliation: NCAA II
Conference: MIAA
Head Coach: Scott Ballard
2000-01 Record: 19-9

FORT VALLEY STATE UNIVERSITY
Location: Fort Valley, GA
Enrollment: 2,480
Nickname: Lady Wildcats
Affiliation: NCAA II
Conference: SIAC
Head Coach: Lonnie Bartley
2000-01 Record: 21-6 (NCAA Tournament)

SOUTH DAKOTA STATE UNIVERSITY
Location: Brookings, SD
Enrollment: 8,540
Nickname: Jackrabbits
Affiliation: NCAA II
Conference: North Central
Head Coach: Aaron Johnston
2000-01 Record: 15-12

Non-Conference Schedule

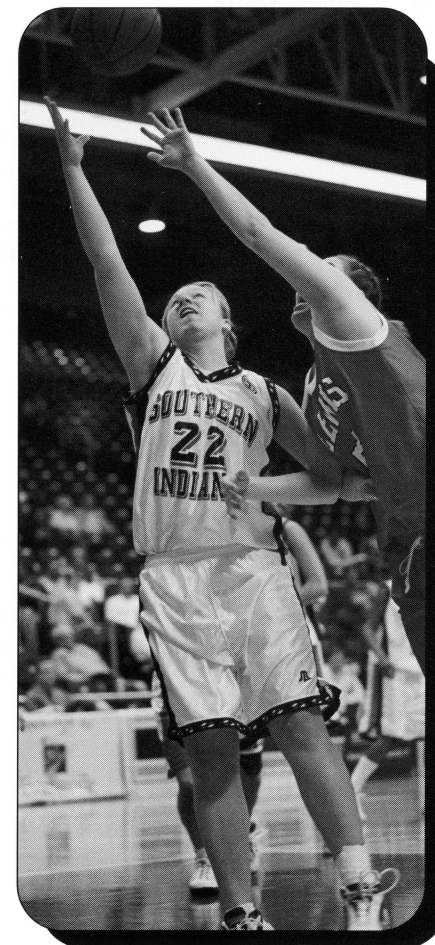
Monday, November 19 at the PAC ARENA
MICHIGAN TECH UNIVERSITY
Location: Houghton, MI
Enrollment: 6,300
Nickname: Huskies
Affiliation: NCAA II
Conference: GLIAC
Head Coach: Darla Olson
2000-01 Record: 26-4 (NCAA Tournament/22nd in Final NCAA II Poll)

Saturday, December 15 at the PAC ARENA
GRACE COLLEGE
Location: Winona Lake, IN
Enrollment: 1,055
Nickname: Lancers
Affiliation: NAIA II
Conference: Mid-Central
Head Coach: Steve Carlson
2000-01 Record: 9-21

Tuesday, December 18 at the PAC ARENA
NORTHERN MICHIGAN UNIVERSITY
Location: Marquette, MI
Enrollment: 8,000
Nickname: Wildcats
Affiliation: NCAA II
Conference: GLIAC
Head Coach: Mike Geary
2000-01 Record: 24-6 (NCAA Tournament/11th in Final NCAA II Poll)

Friday, December 28 at the PAC ARENA
UNIVERSITY OF ILLINOIS-SPRINGFIELD
Location: Springfield, IL
Enrollment: 4,300
Nickname: Prairie Stars
Affiliation: NAIA I
Conference: Region VII Independent
Head Coach: Wanda Nettles
2000-01 Record: 12-17

Sunday, December 30 at Big Rapids, MI
FERRIS STATE UNIVERSITY
Location: Big Rapids, MI
Enrollment: 10,930
Nickname: Bulldogs
Affiliation: NCAA II
Conference: GLIAC
Head Coach: Tracey Fisk
2000-01 Record: 16-11



2001-2002 Screaming Eagles **OPPONENTS**



GLVC Schedule

Saturday, Jan. 26: PAC ARENA
Thursday, Feb. 24: at Louisville, KY
BELLARMINE COLLEGE
 Location: Louisville, KY
 Enrollment: 2,600
 Nickname: Lady Knights
 Head Coach: David Smith
 2000-01 Record: 20-8
 2000-01 GLVC Record/Finish: 14-6/4th
 GLVC Tournament Finish: Lost in
 Semi-finals

Thursday, Dec. 6: at Indianapolis, IN
Saturday, Dec. 16: PAC ARENA
UNIVERSITY OF INDIANAPOLIS
 Location: Indianapolis, IN
 Enrollment: 4,000
 Nickname: Greyhounds
 Head Coach: Teri Moren
 2000-01 Record: 14-13
 2000-01 GLVC Record/Finish: 10-10/7th
 GLVC Tournament Finish: Lost in
 First round

Thursday, Jan. 3: PAC ARENA
Saturday, Feb. 23: Owensboro, KY
KENTUCKY WESLEYAN COLLEGE
 Location: Owensboro, KY
 Enrollment: 800
 Nickname: Panthers
 Head Coach: Tandy Bradford
 2000-01 Record: 8-18
 2000-01 GLVC Record/Finish: 5-15/10th

Thursday, Nov. 29: PAC ARENA
Saturday, Feb. 9: at Romeoville, IL
LEWIS UNIVERSITY
 Location: Romeoville, IL
 Enrollment: 4,300
 Nickname: Flyers
 Head Coach: Brian Michalak
 2000-01 Record: 11-16
 2000-01 GLVC Record/Finish: 8-12/9th
 GLVC Tournament Finish: Lost in
 First Round

Saturday, Nov. 24: at St. Louis, MO
Saturday, Feb. 2: PAC ARENA
UNIVERSITY OF MISSOURI-ST. LOUIS
 Location: St. Louis, MO
 Enrollment: 15,000
 Nickname: Rivermen
 Head Coach: Shelly Ethridge
 2000-01 Record: 14-12
 2000-01 GLVC Record/Finish: 10-10/6th
 GLVC Tournament Finish: Lost in
 First round

Saturday, Dec. 8: PAC ARENA
Saturday, Jan. 24: at Highland Heights, KY
NORTHERN KENTUCKY UNIVERSITY
 Location: Highland Heights, KY
 Enrollment: 11,600
 Nickname: Norse
 Head Coach: Nancy Winstel
 2000-01 Record: 25-5 (NCAA
 Tournament/21st in Final NCAA II Poll)
 2000-01 GLVC Record/Finish: 17-3/2nd
 GLVC Tournament Finish: Lost in Finals

Monday, Nov. 26: at Quincy, IL
Thursday, Jan. 10: at the PAC ARENA
QUINCY UNIVERSITY
 Location: Quincy, IL
 Enrollment: 1,250
 Nickname: Hawks
 Head Coach: Larry Just
 2000-01 Record: 12-15
 2000-01 GLVC Record/Finish: 8-12/8th
 GLVC Tournament Finish: Lost in
 First round

Saturday, Jan. 19: at Rensselaer, IN
Thursday, Feb. 14: PAC ARENA
SAINT JOSEPH'S COLLEGE
 Location: Rensselaer, IN
 Enrollment: 1,000
 Nickname: Pumas
 Head Coach: Lynn Plett
 2000-01 Record: 2-24
 2000-01 GLVC Record/Finish: 2-18/12th

Saturday, Jan. 12: PAC ARENA
Thursday, Feb. 7: at Edwardsville, IL
SOUTHERN ILLINOIS UNIVERSITY EDWARDSVILLE
 Location: Edwardsville, IL
 Enrollment: 12,400
 Nickname: Cougars
 Head Coach: Wendy Hedberg
 2000-01 Record: 20-9 (NCAA
 Tournament)
 2000-01 GLVC Record/Finish: 14-6/3rd
 GLVC Tournament Finish: Lost in
 Semi-finals

Saturday, Dec. 1: PAC ARENA
Thursday, Jan. 17: at Kenosha, WI
UNIVERSITY OF WISCONSIN-PARKSIDE
 Location: Kenosha, WI
 Enrollment: 5,100
 Nickname: Rangers
 Head Coach: Paulette Stein
 2000-01 Record: 6-20
 2000-01 GLVC Record/Finish: 3-17/11th



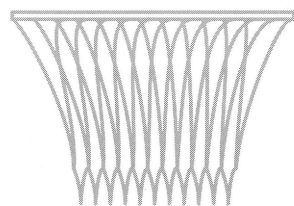
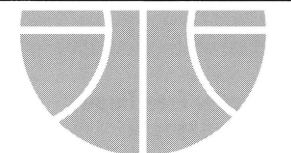
2000-2001 STATISTICS & RESULTS

Player	GP-GS	Min-Avg	TOTAL		3-PTS		FT-FTA	Pct	REBOUNDS				PF	FO	A	TO	Blk	Stl	Pts	Avg
			FG-FGA	Pct	3FG-FGA	Pct			Off	Def	Tot	Avg								
23 Glaser, Natalie	32-29	874-27.3	146-375	.389	64-164	.390	129-165	.782	54	64	118	3.7	69	2	67	65	8	35	485	15.2
25 Prewett, Elizabeth	32-27	872-27.2	186-359	.518	0-0	.000	108-156	.692	121	172	293	9.2	83	2	49	69	28	49	480	15.0
22 Stuckman, Jessica	24-10	538-22.4	144-251	.574	0-1	.000	68-87	.782	59	94	153	6.4	62	3	24	34	4	37	356	14.8
12 Hughes, Casey	31-26	762-24.6	133-274	.485	20-60	.333	53-72	.736	70	65	135	4.4	63	0	69	50	13	51	339	10.9
20 Moore, Jasmine	31-26	793-25.6	108-275	.393	29-104	.279	56-78	.718	23	82	105	3.4	50	0	150	121	6	69	301	9.7
24 Irwin, Michelle	26-5	390-15.0	52-108	.481	0-1	.000	38-105	.362	35	78	113	4.3	89	8	17	44	7	13	142	5.5
21 Hochgesang, Karrie	31-0	394-12.7	49-119	.412	25-67	.373	33-46	.717	15	28	43	1.4	50	1	31	40	0	18	156	5.0
04 Miller, Bethany	32-11	588-18.4	43-111	.387	7-30	.233	47-70	.671	27	50	77	2.4	65	1	103	69	1	64	140	4.4
44 Nations, Casey	31-16	432-13.9	54-122	.443	0-1	.000	26-55	.473	44	105	149	4.8	88	4	19	51	32	28	134	4.3
10 Wall, Erin	31-0	363-11.7	36-75	.480	18-43	.419	11-18	.611	9	24	33	1.1	44	0	34	22	0	11	101	3.3
51 Witkowiak, Kimberly	26-0	234 -9.0	30-70	.429	0-0	.000	13-30	.433	13	35	48	1.8	47	2	5	13	15	4	73	2.8
11 Wooley, Mevett	19-0	210-11.1	13-45	.289	1-11	.091	14-20	.700	10	9	19	1.0	27	0	41	38	1	19	41	2.2
TEAM									57	75	132	4.1	0		5					
Total	32	6450	994-2184	.455	164-482	.340	596-902	.661	537	881	1418	44.3	737	23	609	621	115	398	2748	85.9
Opponents.	32	6450	697-1818	.383	130-415	.313	627-887	.707	397	839	1236	38.6	727	-	432	839	57	291	2151	67.2

SCORE BY HALVES (and OTs):	1st	2nd	OT1	OT2	TOTAL
Opponents	1010	1129	9	3	2151
SOUTHERN INDIANA	1310	1403	9	26	2748

RECORD:	OVERALL	HOME	AWAY	NEUTRAL
ALL GAMES	(28-4)	(14-0)	(7-3)	(7-1)
CONFERENCE	(17-3)	(10-0)	(7-3)	(0-0)
NON-CONFERENCE	(11-1)	(4-0)	(0-0)	(7-1)

2000-2001 FINAL GLVC RESULTS



Great Lakes Valley Conference 2000-2001 FINAL Women's Basketball Standings

www.siue.edu/ATHLETIC/glvchome.html

	W-L	Pct.	W-L	Pct.	Home	Away	Neut.	Streak
yzSOUTHERN INDIANA	17-3	.850	28-4	.875	14-0	7-3	7-1	L-1
zNorthern Kentucky	17-3	.850	25-5	.833	14-0	8-3	3-2	L-2
zSIU-Edwardsville	14-6	.700	20-9	.690	10-2	8-5	2-2	L-2
Bellarmino	14-6	.700	20-8	.714	11-1	6-6	3-1	L-1
*IUPU Ft. Wayne	12-8	.600	19-8	.704	10-5	8-3	1-0	W-5
Missouri-St. Louis	10-10	.500	14-12	.539	8-6	5-6	0-1	L-3
Indianapolis	10-10	.500	14-13	.519	9-3	4-8	2-2	L-1
Quincy	8-12	.400	12-15	.444	6-7	4-6	2-1	L-3
Lewis	8-12	.400	11-16	.407	8-5	3-10	0-1	L-2
Kentucky Wesleyan	5-15	.250	8-18	.308	7-6	1-12	0-0	L-4
Wisconsin-Parkside	3-7	.150	6-20	.231	4-8	0-12	2-0	L-7
St. Joseph's	2-18	.100	2-24	.077	2-8	0-14	0-2	W-1

y-NCAA II Elite Eight Participant; z-NCAA II Participant; *Not eligible for GLVC Tournament

2000-2001 All-GLVC Teams

First Team

Player, School	Ht.	Year	Pos.	Hometown
Michelle Cottrell, NKU	6-0	Jr.	F	Florence, KY
Misi Clark, SIUE	5-10	Sr.	G	Paris, IL
Elizabeth Prewett, USI	6-0	Sr.	F/C	Washington, IN
Rachel Young, Bellarmine	5-8	Sr.	G	Alexandria, IN
Elizabeth Ramsey, Indianapolis	6-1	Sr.	F	Greenfield, IN

Second Team

Heather Livingstone, NKU	5-4	Sr.	G	Winneconne, WI
Trish Fleming, IPFW	5-10	So.	F	Westfield, IN
Jamie Holderman, IPFW	5-10	Sr.	G	Columbia City, IN
Nickie Randall, Bellarmine	5-4	So.	G	Mt. Washington, KY
Natalie Glaser, USI	5-9	Sr.	G	Evansville, IN

Honorable Mention

Lynette Wellen, UMSL; Michele Tuchfarber, NKU; Colleen Sexton, Quincy; Crystal Martin, KWC; **Jessica Stuckman, USI**; Lynne Johnson, BU; Stephanie Hutchcraft, BU; **Jasmine Moore, USI**; Laura Schmalstig, INDY; Heather Allen, SJC

Player-of-the-Year

Michelle Cottrell, NKU

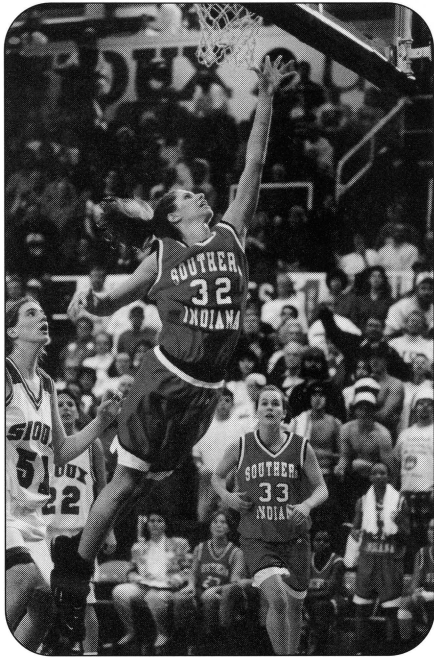
Coach-of-the-Year

Rick Stein, Southern Indiana

Freshman-of-the-Year

Jessica Stuckman, Southern Indiana

Women's Basketball RECORD BOOK



USI WOMEN'S BASKETBALL ALL-TIME RECORDS

Career: Leading Scorers

1. LeAnn Freeland (1993-97)	2,269
2. Eileen Weber (1994-98)	1,847
3. Kathy Lauck (1990-94)	1,573
4. Shelly Scott (1987-92)	1,414
5. Peggy Witsman (1982-86)	1,267
6. Connie VanMeter (1983-87)	1,163
7. Natalie Glaser (1998-01)	1,076
8. Casey Hughes (1998-Present)	1,059
9. Deb Pope (1992-96)	998
10. Penny Dietz (1985-87)	945
11. Holly Billings (1978-81)	889
12. Mindy Gingerich (1996-00)	843
13. Elizabeth Prewett (1997-01)	837
14. Glenna Bower (1991-94)	819
15. Debbie Frank (1983-87)	808
16. Jennifer Donner (1996-00)	803
17. Adrienne Seitz (1995-99)	780
18. Laura Perek (1990-94)	776
19. Sheri Kaiser (1990-93)	694
20. Debbie Schutte (1975-78)	675

Career: Leading Rebounders

1. LeAnn Freeland (1993-97)	961
2. Eileen Weber (1994-98)	842
3. Kathy Lauck (1990-94)	791
4. Shelly Scott (1987-92)	745
5. Vicky Branson (1982-86)	682
Debbie Frank (1983-87)	682
7. Debbie Schutte (1975-78)	600
8. Elizabeth Prewett (1997-01)	589
9. Mary Beaven (1978-81)	542
10. Connie VanMeter (1983-87)	465
11. Adrienne Seitz (1995-99)	460
12. Annette Elkin (1991-94)	439
13. Holly Billings (1978-81)	425
14. Cathy Teepool (1994-99)	415
15. Casey Hughes (1998-Present)	407

Career: Leaders in Games Played

1. Adrienne Seitz (1995-99)	120
2. Jennifer Donner (1996-00)	117
3. Mindy Gingerich (1996-00)	116
4. LeAnn Freeland (1993-97)	115
Eileen Weber (1994-98)	115

Career: Most Field Goals Made

1. LeAnn Freeland (1993-97)	887
2. Eileen Weber (1994-98)	705
3. Kathy Lauck (1990-94)	622
4. Shelly Scott (1987-92)	504
5. Peggy Witsman (1982-86)	496

Career: Most Field Goals Attempted

1. LeAnn Freeland (1993-97)	1,449
2. Eileen Weber (1994-98)	1,317
3. Kathy Lauck (1990-94)	1,258
4. Peggy Witsman (1982-86)	1,245
5. Shelly Scott (1987-92)	1,127

Career: Most Free Throws Made

1. LeAnn Freeland (1993-97)	491
2. Shelly Scott (1987-92)	385
3. Eileen Weber (1994-98)	348
4. Kathy Lauck (1990-94)	329
5. Peggy Witsman (1982-86)	273

Career: Most Free Throws Attempted

1. LeAnn Freeland (1993-97)	738
2. Shelly Scott (1987-92)	494
3. Kathy Lauck (1990-94)	484
4. Eileen Weber (1994-98)	474
5. Peggy Witsman (1982-86)	387

Career: Most Three-point Goals Made

1. Deb Pope (1992-96)	184*
2. Jennifer Donner (1996-00)	129
3. Glenna Bower (1991-94)	112
4. Natalie Glaser (1998-01)	106
5. Laura Perek (1990-94)	94

*GLVC Career Record with 122 in conference play.

Career: Most Three-point Field Goals Attempted

1. Deb Pope (1992-96)	416*
2. Jennifer Donner (1996-00)	334
3. Glenna Bower (1991-94)	326
4. Missy Hart (1991-95)	287
5. Natalie Glaser (1998-01)	282

*GLVC Career Record with 284 in conference play.

Career: Most Assists

1. Adrienne Seitz (1995-99)	565
2. Connie VanMeter (1983-87)	353
3. Sharon Agee (1986-89)	316
4. Daria Weitekamp (1994-96)	291
5. Lisa Wells (1992-94)	247

Career: Most Steals

1. Adrienne Seitz (1995-99)	198
2. Eileen Weber (1994-98)	188
3. LeAnn Freeland (1993-97)	167
4. Laura Perek (1990-94)	155
5. Mindy Gingerich (1996-00)	152

GAME & SEASON RECORD BOOK

Most Points

GAME-(50) LeAnn Freeland vs. IPFW, Jan. 28, 1995
SEASON-(674) LeAnn Freeland, 1996-97

Most Field Goals Made

GAME-(20) LeAnn Freeland vs. Ashland, Jan. 26, 1995
SEASON-(265) LeAnn Freeland, 1994-95

Most Field Goals Attempted

GAME-(28) Holly Billings vs. Columbia College, 1979-80
SEASON-(439) Penny Dietz, 1986-87

Most Free Throws Made

GAME-(19) Shelly Scott vs. Indianapolis, 1988-89
SEASON-(196) Shelly Scott, 1988-89

Most Consecutive Free Throws

(31) Kathy Lauck, 1993-94

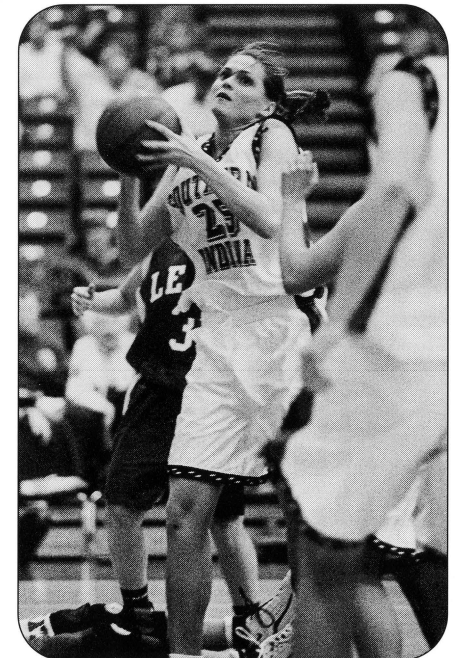
Most Three-point Field Goals Made

GAME-(8) Deb Pope vs. Kentucky State, Feb. 18, 1995*
SEASON-(76) Deb Pope, 1995-96

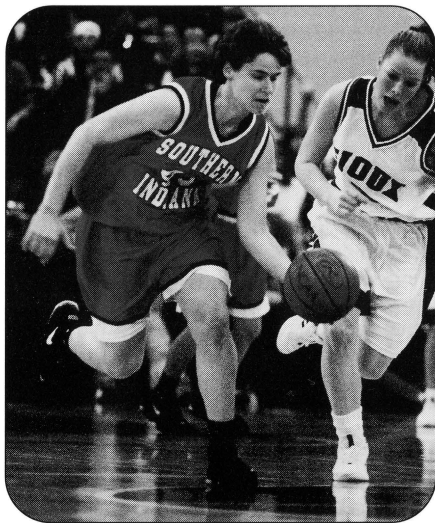
*Tied the GLVC record

Most Three-point Field Goals Attempted

GAME-(14) Deb Pope vs. Kentucky State, Feb. 18, 1995; vs. Lewis, Feb. 4, 1995
SEASON-(188) Deb Pope, 1995-96



Women's Basketball RECORD BOOK



Most Rebounds

GAME-(21) Debbie Schutte vs. Oakland City 1977; (21) Jill Padgett vs. Kentucky Wesleyan 1977
SEASON-(281) Shelly Scott, 1988-89

Most Steals

GAME-(10) Angie Cacello vs. Kentucky Wesleyan, Feb. 22, 1997
SEASON-(101) Connie VanMeter, 1986-87

Most Assists

GAME-(14) Adrienn Seitz vs. SIU Edwardsville, Feb. 9, 1999
SEASON-(194) Adrienne Seitz, 1998-99

Most Blocks

GAME-(10) LeAnn Freeland vs. Indianapolis, Dec. 29, 1994
SEASON-(69) LeAnn Freeland, 1994-95
CAREER-(194) LeAnn Freeland, 1993-97

Best Field Goal Percentage

(Minimum of 10 attempts)
GAME-(.933, 14-15) Eileen Weber vs. Kentucky Wesleyan, Feb. 17, 1998
SEASON-(.652, 259-397) LeAnn Freeland, 1996-97
CAREER-(.612, 887-1449) LeAnn Freeland, 1993-97 (Min. 300 attempts)

Best Free Throw Percentage

(Minimum of 10 attempts)
GAME-(1.000, 14-14) Shelly Scott vs. St. Joseph's, 1988-89
SEASON-(.855, 59-69) Cindy Huckabee, 1980-81
CAREER-(.779, 385-494) Shelly Scott, 1987-92 (Min. 200 Attempts)

Best Three-point Field Goal Percentage

(Minimum of 5 attempts)
GAME-(.857, 6-7) Deb Pope vs. Bellarmine, 1-21-95
SEASON-(.507, 74-146) Deb Pope, 1994-95 (Min. 40 Att.)
CAREER-(.442, 184-416) Deb Pope, 1992-96 (Min. 90 Att.)

Highest Rebounding Average

SEASON-(15.1) Debbie Schutte, 1976-77
CAREER-(14.3) Debbie Schutte, 1975-77

Highest Scoring Average

SEASON-(24.4) LeAnn Freeland, 1994-95
CAREER-(19.7) LeAnn Freeland, 1993-97

TEAM RECORDS

Most Points

GAME-(116) vs. Kentucky State, Feb. 13, 1993
GAME/BOTH TEAMS-(205) USI (99) vs. Bellarmine (106), March 5, 1992
SEASON-(2844) 1996-97

Most Field Goals Made

GAME-(48) vs. Kentucky State, Feb. 13, 1993
SEASON-(1069) 1996-97

Most Field Goals Attempted

GAME-(100) vs. Kentucky State, Feb. 13, 1993
SEASON-(2196) 1996-97

Most Free Throws Made

GAME-(38) vs. Alaska-Anchorage, Dec. 11, 1992; (38) vs. Indianapolis, Dec. 5, 1998
SEASON-(497) 1992-93

Most Free Throws Attempted

GAME-(50) vs. Alaska-Anchorage, Dec. 11, 1993; (50) vs. Indianapolis, Dec. 5, 1998
SEASON-(733) 1992-93

Most Three-point Field Goals Made

GAME-(14) VS. IUPUI Indianapolis, Dec. 4, 1992
SEASON-(217) 1992-93

Most Three-point Field Goals Attempted

GAME-(30) vs. Indianapolis, Jan. 30, 1993
SEASON-(623) 1992-93

Best Field Goal Percentage

GAME-(.609, 42-69) vs. St. Joseph's Jan. 11, 1997
SEASON-(.487, 1069-2196) 1996-97

Best Free Throw Percentage

(Minimum of 10 attempts)
GAME-(1.000, 13-13) vs. Kentucky Wesleyan, Feb. 17, 1990
SEASON-(.705, 488-692) 1995-96

Best Three-Point Percentage

(Minimum of 10 attempts)
GAME-(.667, 8-12) vs. Missouri-St. Louis, Feb. 13, 1999
SEASON-(.384, 175-456) 1994-95

Most Rebounds

GAME-(67) vs. Kentucky State, Feb. 13, 1993
SEASON-(1,418) 2000-01

Most Steals

GAME-(29) vs. Tri-State, Dec. 29, 1998 & vs. St. Francis, Dec. 7, 1996
SEASON-(468) vs. 1996-97

Most Blocks

GAME-(16) vs. Bellarmine, Feb. 22, 1996
SEASON-(157) 1995-96

Miscellaneous

WIDEST MARGIN OF VICTORY:
(95) vs. St. Mary's (113-18), 1978-79
MOST VICTORIES IN A SEASON:

(30) 1996-97
MOST VICTORIES IN THE GLVC:
(20) 1996-97 (Second year with a 20 game schedule)
LONGEST WINNING STREAK: (29) 1996-97
LONGEST WINNING STREAK
IN A SEASON: (29) 1996-97
BEST RECORD: (30-2, .938) 1996-97
HIGHEST SCORING AVERAGE: (88.9)
1996-97 (Best in the nation)

INDIVIDUAL HONORS

All-Americans

Kathy Lauck

- Kodak/WBCA 1994
- Division II Bulletin (First Team) 1994
- USA Today/Don Hansen's Weekly Basketball Gazette (Second Team) 1994
- GLVC Player of the Year, 1994
- All-GLVC 1993 (Second Team), 1994 (First Team)

LeAnn Freeland

- Kodak/WBCA 1995, 1996, 1997
- Division II Bulletin 1997
- College Sports All-American, 1995, 1996
- College Sports National Player of the Year, 1995
- GLVC Player of the Year, 1995, 1997
- All-GLVC 1995 (First Team), 1996 (First Team), 1997 (First Team)
- GTE-CoSIDA Academic All-American 1996 (Third Team), 1997 (First Team)
- Academic All-GLVC, 1995, 1996, 1997

Eileen Weber

- Kodak/WBCA All-American; Daktronics All-American (Second Team), 1998
- Kodak/WBCA 1997 (Honorable Mention)
- Division II Bulletin 1997 (Honorable Mention); 1998 (Second Team)
- GLVC Player of the Year, 1998
- GLVC Newcomer of the Year, 1995
- All-GLVC 1995 (Second Team), 1996 (Second Team), 1997 (First Team); 1998 (First Team)
- Academic All-GLVC 1996, 1997, 1998

(continued on page 22)

Women's Basketball RECORD BOOK

INDIVIDUAL HONORS

Elizabeth Prewett

- Daktronics All-American (Third Team), 2001
- All-Great Lakes Region (First Team), 2001
- NCAA II Great Lakes Region Tournament MVP, 2001
- All-GLVC (First Team), 2001
- GLVC All-Tournament Team, 2001

All-IAIAW District

Holly Billings—1981 Southern District All-Tournament Team
Cindy Huckabee—1981 Southern District All-Tournament Team

All-IAIAW State

Holly Billings—1981 All-State Tournament Team
Lisa Krieg—1982 All-State Tournament Team

State Awards

Holly Billings—1981 Eleanor St. John Award (presented to the top seven female athletes in Indiana)

NCAA Division II Player of the Year

LeAnn Freeland—1995 (College Sports Magazine)

Great Lakes Region

All-Tournament Selections

Eileen Weber—1997
LeAnn Freeland—1997 (MVP)
Jasmine Moore—2001
Elizabeth Prewett—2001 (MVP)

Great Lakes Valley Conference

Players of the Year

Kathy Lauck—1994
LeAnn Freeland—1995, 1997
Eileen Weber—1998

Great Lakes Valley Conference

Newcomers/Freshman of the Year

Eileen Weber—1995
Jessica Stuckman—2001

Great Lakes Valley Conference

All-Tournament Selections

Jessica Stuckman—2001 (MVP)
Elizabeth Prewett—2001

Great Lakes Valley Conference

Players of the Week

Connie VanMeter—1984
Kim Pearson—1988
Shelly Scott—1988-89 (Twice)
Kathy Lauck—1992, 1994 (Twice)
Glenna Bower—1992
Missy Hart—1995
LeAnn Freeland—1995 (Three Times), 1996 (Five Times), 1997 (Six Times)
Eileen Weber—1995, 1996, 1997
Karrie Hochgesang—2000
Nicole McDaniel—2000
Jessica Stuckman—2001
Elizabeth Prewett—2001
Casey Hughes—2001
Natalie Glaser—2001

All-Great Lakes Valley Conference Team

Peggy Witsman—1983-84 (Second Team)
Penny Dietz—1985-86 (Second Team), 1986-87 (Second Team)
Shelly Scott—1988-89 (Second Team), 1989-90 (Honorable Mention)
Kathy Lauck—1991-92 (Honorable Mention), 1992-93 (Second Team), 1993-94 (First Team)
Glenna Bower—1991-92 (Honorable Mention)
Charlene Tinner—1992-93 (Honorable Mention)
Lisa Wells—1992-93 (Honorable Mention), 1993-94 (Honorable Mention)
Laura Perek—1992-94 (Honorable Mention)
LeAnn Freeland—1994-95 (First Team), 1995-96 (First Team), 1996-97 (First Team)
Eileen Weber—1994-95 (Second Team), 1995-96 (Second Team), 1996-97 (First Team); 1997-98 (First Team)
Deb Pope—1994-95 (Honorable Mention), 1995-96 (Second Team)
Casey Hughes—1998-99 (Second Team), 1999-00 (Honorable Mention)
Adrienne Seitz—1998-99 (Honorable Mention)
Stosha DeShaiser—1998-99 (Honorable Mention)
Mindy Gingerich—1999-00 (Honorable Mention)
Elizabeth Prewett—2000-01 (First Team)
Natalie Glaser—2000-01 (Second Team)
Jessica Stuckman—2000-01 (Honorable Mention)
Jasmine Moore—2000-01 (Honorable Mention)

Great Lakes Valley Conference

Coch of the Year

Chance Dugan, 1997
Rick Stein, 2001

WBCA District IV Coach of the Year

Chance Dugan 1997
(Finalist for National Coach of the Year)

Great Lakes Valley Conference

All-Academic Team

Jane Weaver—1988*
Shelly Scott—1989, 1992
Shelly Kramer—1989
Amy McCord—1990
Laura Perek—1992, 1993, 1994
Sharie Sweet—1992
Sharon Gentry—1992
Sheri Kaiser—1992, 1993
Danielle Slaughter—1993, 1994
Jeanette Elkin—1994
Daria Weitekamp—1996
LeAnn Freeland—1995, 1996**, 1997**
Eileen Weber—1996, 1997, 1998
Adrienne Seitz—1996
Mindy Gingerich—1997, 1998
Darci Redenbaugh—1997, 1998
Angie Cacello—1998
Stosha DeShaiser—1998
Liz Prewett—1998

*Weaver graduated in 1989

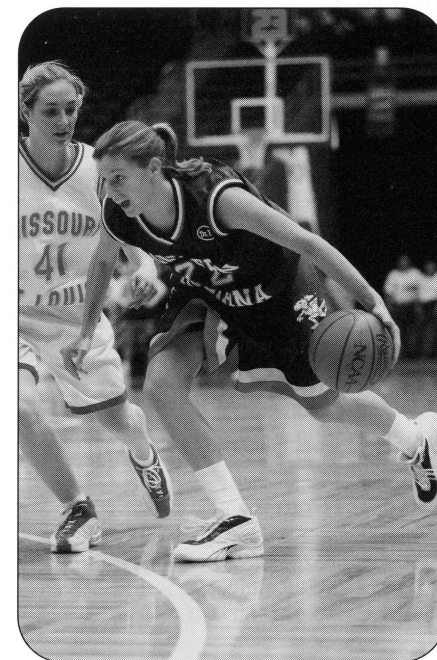
summa cum laude with a perfect 4.0 GPA

**Freeland was named GTE/CoSIDA Academic All-American

TEAM HONORS

1979-80 IAAIW Southern District Champions
Final Four in IAAIW Southern District
1980-81 Runner-up in the IAAIW Southern District
Final Four in IAAIW State Tournament
1994-95 Nationally Ranked third
GLVC Co-Champions
NCAA II Tournament Berth (Tied for fifth)
1995-96 Preseason Ranked third (Division II Bulletin)
NCAA II Tournament Great Lakes Regional (Tied for third)

1996-97 Preseason Ranked 6th (Division II Bulletin)
GLVC Champion (20-0)
NCAA II Great Lakes Regional Champions (Marquette, MI)
NCAA II National Finalist (Grand Forks, ND)
1997-98 Ranked NUMBER ONE nationally for six weeks.
GLVC regular season and tournament champions.
NCAA II Great Lakes Regional Semi-Finalist (HOSTED BY USI)
1998-99 Participated in the NCAA II Tip-Off Classic at Disney's Wide World of Sports (Orlando, FL)
Third in GLVC Tournament
1999-00 GLVC Tournament
2000-01 NWMSU Disney Classic participant (Orlando, FL)
GLVC Co-Champions (17-3)
GLVC Tournament Champions
NCAA II Great Lakes Regional Championa (Houghton, MI)
NCAA II Elite Eight Participant (Rochester, MN)
Ranked 6th in final WBCA Top 25 Poll



Women's Basketball RECORD BOOK

ALL-TIME COACHING RECORDS

1975-76	3-8	Ruth Waller
1976-77	7-11	Ruth Waller
1977-78	8-8	Ruth Waller
1978-79	14-6	Ruth Waller
1979-80	16-9	Ruth Waller
1980-81	14-11	Ruth Waller
1981-82	7-17	Ruth Waller
1982-83	4-24	Ruth Waller
1983-84	15-13	Ruth Waller
1984-85	14-14	Ruth Waller
	(102-94, .520)	
1985-86	15-13	Larry Shown
1986-87	12-15	Larry Shown
	(27-28, .491)	
1987-88	8-20	Bob Barrett
	(8-20, .400)	
1988-89	6-21	Felicia Cavallini
1989-90	2-26	Felicia Cavallini
1990-91	3-25	Felicia Cavallini
	(11-72, .133)	
1991-92	8-20	Chancellor Dugan
1992-93	15-15	Chancellor Dugan
1993-94	17-10	Chancellor Dugan
1994-95*!	22-5	Chancellor Dugan
1995-96!	22-7	Chancellor Dugan
1996-97*!	30-2	Chancellor Dugan
1997-98*!	26-2	Chancellor Dugan
1998-99	19-12	Chancellor Dugan
	(159-73, .685)	
1999-00	15-12	Rick Stein
2000-01*!	28-4	Rick Stein
	(43-16, .729)	
26 YEARS+	350-330	(.515)

*GLVC Championship
!NCAA II Tournament Berth

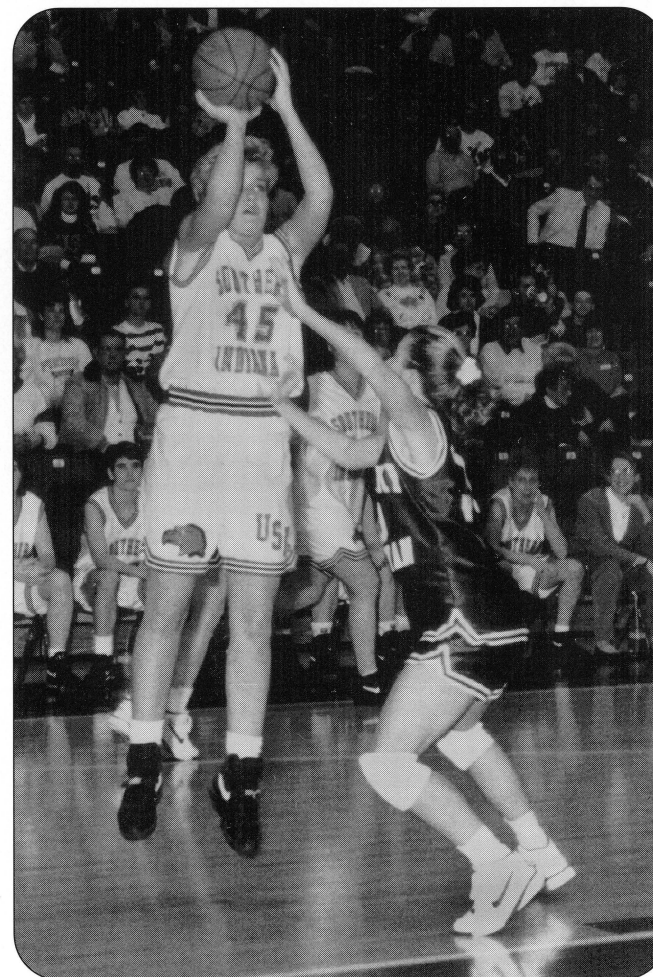
1975-01 ALL-TIME WOMEN'S BASKETBALL SERIES RECORDS

Abilene Christian	0-1
Anderson College	2-0
Ashland University	7-15
Angelo State	1-0
Austin Peay	0-6
Bellarmine College	14-28
Brescia	0-3
Butler University	1-6
Cal State Domingez Hills	1-0
Campbellsville	0-1
California-Davis	1-0

Charleston	1-0
Central Arkansas	1-0
Central Missouri	1-0
Central State	0-2
Columbia College	0-1
Columbus State	0-2
Chicago Circle	1-0
David Lipscomb	0-2
Delta State	2-0
DePauw University	2-0
Eastern Illinois	0-2
East Texas State	0-1
Evansville	7-15
Ferris State	3-0
Florida Tech	1-0
Fort Campbell	1-2
Franklin College-A	9-2
Gannon	2-0
Georgetown	1-0
Grand Valley State	1-0
Hanover	1-0
Indianapolis	20-3
Indiana Pa.	1-0
Indiana Tech	2-0
IUPU-Ft. Wayne	16-17
IUPU-Indianapolis	11-5
IU-Southeast	14-9
Indiana State	0-1
John A. Logan	4-0
John Hopkins	1-0
Kentucky State	12-3
Kentucky Wesleyan	31-21
Lake Superior State	1-0
Lewis	21-16
Lincoln Trail	6-2
Lincoln University	1-0
Lynn	0-1
Marian	0-3
Michigan Tech	3-2
Middle Tennessee St.	0-2
Missouri-Kansas City	1-2
Missouri-Rolla	0-2
Missouri-St. Louis	11-8
Missouri Southern State	0-1
Murray State	1-4
Nebraska Kearney	0-1
Northern Colorado	1-0
North Dakota	0-1
Northern Kentucky	13-24
Northern Michigan	2-1
NW Missouri State	1-0
Oakland University	1-1
Oakland City	22-11

Pikeville	0-1
Puerto Rico-Mayaguez	1-0
Purdue-Calumet	1-0
Quincy	12-4
Rockhurst	1-0
Scranton	1-0
School of the Ozarks	0-1
Southeast Missouri	1-11
SIU-Carbondale	4-2
SIU-Edwardsville	18-16
St. Ambrose	1-0
St. Francis	1-0
St. Joseph's	20-20

St. Louis	2-4
St. Mary's (Tex.)	1-0
St. Mary's of the Woods	4-0
St. Rose	0-1
Tampa	1-0
Truman State	1-1
Tri-State	1-0
Valparaiso	3-0
Vincennes	0-8
Wayne State	1-0
Wisconsin-Parkside	11-0
Wright State	2-2



PLATINUM SPONSORS

G.E. Plastics
Integra Bank
Master Tire & Accessories

Pepsi Cola General Bottlers
Sprint PCS
West Side Nut Club

**VARSITY CLUB
ALL-AMERICAN EAGLES**

Terry & Susan Babb
William & Mary Jane Baechle
Bruce & Carol Baker
Bonnie Brill
Ed & Holley Brundick
Jack & Bert Burgdorf
Steve & Terri Chancellor
Bob & Pam Clayton
Colonial Properties
Com-Tech Plastics
Jerry & Mike Crawford
David Deig
Wayne & Patti Deig
Gene & Genie Eades
Bettie Engelbrecht
Vic & Dot Feix
Dan & Rhonda Felker
Jim & Judy Fleck
Jef & Neal Franklin
Vic & Pam Gallagher
Patrick J. Goen
Ed Hafer & Associates
Joe & Sandy Hatfield
Dan & Kim Hermann
Ron & Theresa Herrenbruck
Loren Herrli

Mark & Joyce Hubbard
David & Sarah Huber
Industrial Contractors
Alan & Marilyn Johnson
Ken & Dorthy Kaiser
Rick & Jody Kissel
Steven & Judi Kuric
Mike & Debra Laster
Aimee Luebben & Keith South
Garey Patmore
Steve & Kim Pike
Bernie Powers
Rose Rexing
Jay & Kate Rhodes
John Schutz
Jack & Kate Siemers
Earl & Ruth Smith
Marvin & Joan Smith
Tri-State Trophies
Larry & Kathy Vonderahe
Paul & Eleanor Werner
West Side Nut Club
James & Karen Will
Jim & Eileen Will
John & Linda Willis
Jeff & Laurie Wilmes
Mark & Annette Wright
Ray & Marilyn Wright

GOLD SPONSORS

Applebee's
Casino Aztar
Denny's Restaurant
Lamar Outdoor Advertising
Old National Bank
of Evansville
Tri-State Athletic Club
Deaconess Hospital

SILVER SPONSORS

ABC 25 WEHT TV
Expressway Dodge
Fairfield Inn West
Fifth Third Bank
Gerteisen Electric
Hilliard Lyons of Evansville
Ideal American Dairy
Kenny Kent Toyota Lexus
Mitsubishi
Lewis Bakeries
Lindsey Lincoln Mercury Isuzu
Shyler's Bar-B- Q
Superior Concrete
United Leasing
Working Distributors

SILVER SPONSORS

Advantage Courts and Fitness
American General Finance
Blimpie Subs & Salads
Broerman Chevrolet
Burger King
Card Management Corporation
D Patrick Downtown Ford
Elbrink Electric
Empire Contractors
Evansville Courier & Press
Evansville Teachers Federal
Credit Union
Eye Mart
Fischer Candy Company
Golden Corral
Hacienda Mexican Restaurants
Hagedorn's Tavern
Haynie Travel Service
Jacob's Pub & Restaurant
Moore & Associates
Mattress Factory Showroom
Mead Johnson Nutritionals
Mulzer Crushed Stone
O'Charley's Restaurant &
Lounge
F.C. Tucker/Huber Realtors
Turon's Pizzeria & Brewery
Wendy's Old Fashioned
Hamburgers
Western Rib-Eye & Ribs
Restaurant
Zeidler Floral Company

USI QUICK FACTS

USI Screaming Eagles Quick Facts

Location: Evansville, Ind. (population 290,000*)
Enrollment: 9,362 (Fall 2001)
Conference: Great Lakes Valley Conference
Affiliation: NCAA II
Nickname: Screaming Eagles
Colors: Red, White, and Blue
Home Court: Physical Activities Center (cap. 3,300)
Web site: www.usi.edu
 *includes surrounding area.

USI Board of Trustees

James L. Will, Sr., Evansville Chair
 Bruce H. Baker, Boonville Vice Chair
 Tina M. Kern, Evansville Vice Chair
 Louise S. Bruce, Tell City Secretary
 G. Patrick Hoehn, Jeffersonville
 Thomas F. McKenna, Carmel
 Walter J. Jermakowicz III, Evansville
 Harolyn G. Torain, Indianapolis

USI Officers

Dr. H. Ray Hoops, President
 John L. Deem, Acting Vice President for Student Affairs
 Dr. Robert L. Reid, Vice President for Academic Affairs
 Richard W. Schmidt, Vice President for Business Affairs
 Sherrienne M. Standley, Vice President for Advancement

USI Athletics

Steve Newton
 Athletic Director812/464-1846
 Jon Mark Hall
 Asst. Athletic Director/Men's Tennis Coach
 NCAA Compliance Coordinator812/465-7164
 Dr. Scott Gordon
 Faculty Representative812/465-7137
 Mike Goedde
 Baseball Coach812/464-1943

Rick Herdes
 Men's Basketball Coach812/465-1639
 Marc Hostetter
 Asst. Men's Basketball Coach812/461-5279
 Stan Gouard
 Asst. Men's Basketball Coach812/465-1083
 Rick Stein
 Women's Basketball Coach812/465-7108
 LeAnn Freeland
 Asst. Women's Basketball Coach
 and Senior Women's Administrator812/464-1895
 Randa Gatling
 Asst. Women's Basketball Coach812/465-1050
 Mike Hillyard
 Cross Country Coach812/464-1846
 Jim Brown
 Men's Golf Coach812/464-1898
 Don Bisesi
 Women's Golf Coach812/435-6075

Dan Hogan
 Men's Soccer Coach
 and Athletic Academic Advisor812/464-1946
 Bill Wilkins
 Women's Soccer Coach812/465-1041
 Sue Kunkle
 Women's Softball Coach812/465-1664
 Keely Porter
 Women's Tennis Coach812/465-1678
 Chrissy Smith
 Women's Volleyball Coach812/465-1789
 Chris Johnson
 Head Athletic Trainer812/465-1298
 Ray Simmons
 Sports Information Director812/465-1622
 812/475-0373-H
 812/465-7094-Fax

Ticket Information
 812/465-7165



BE A PART OF THE EXCITEMENT of the **PEPSI/GLVC** BASKETBALL TOURNAMENT

Presented by Kenny Kent Toyota & Old National Bank



Basketball Tournament



February 27 & 28, March 1 & 2, 2002
Roberts Stadium • Evansville, IN

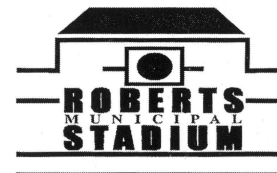
Sessions

Wed., Feb. 27	Session 1	Game 1	Women's Quarterfinals	12:00 pm
		Game 2	Women's Quarterfinals	2:30 pm
	Session 2	Game 3	Women's Quarterfinals	6:00 pm
		Game 4	Women's Quarterfinals	8:30 pm
Thurs., Feb. 28	Session 3	Game 5	Men's Quarterfinals	12:00 pm
		Game 6	Men's Quarterfinals	2:30 pm
	Session 4	Game 7	Men's Quarterfinals	6:00 pm
		Game 8	Men's Quarterfinals	8:30 pm
Fri., March 1	Session 5	Game 9	Women's Semifinals	12:00 pm
		Game 10	Women's Semifinals	2:30 pm
	Session 6	Game 11	Men's Semifinals	6:00 pm
		Game 12	Men's Semifinals	8:30 pm
Sat., March 2	Session 7	Game 13	Women's Finals	4:00 pm
		Game 14	Men's Finals	7:00 pm



For More Details Call
812-476-1383

or visit our web site at www.siu.edu/ATHLETIC/glvchome.html



TOYOTA LEXUS Used Car SuperStore

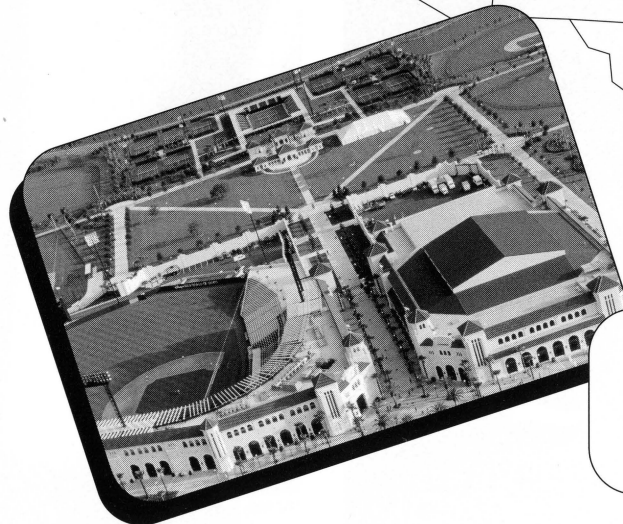
5600 Division Street - Evansville, Indiana 47715
(812) 473-5600 - 1-800-321-KENT - www.kennykent.com



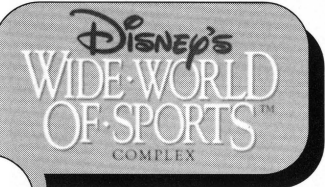
Screaming Eagles **ACROSS THE NATION**

Screaming Eagles fly around the USA

The University of Southern Indiana women's basketball teams have traveled the continental United States and beyond over the last 11 years. USI has played in regular season tournaments in Alaska, California, Florida, Missouri, and the Bahamas, and in NCAA Division II Tournaments in North Dakota, Michigan, and Minnesota.



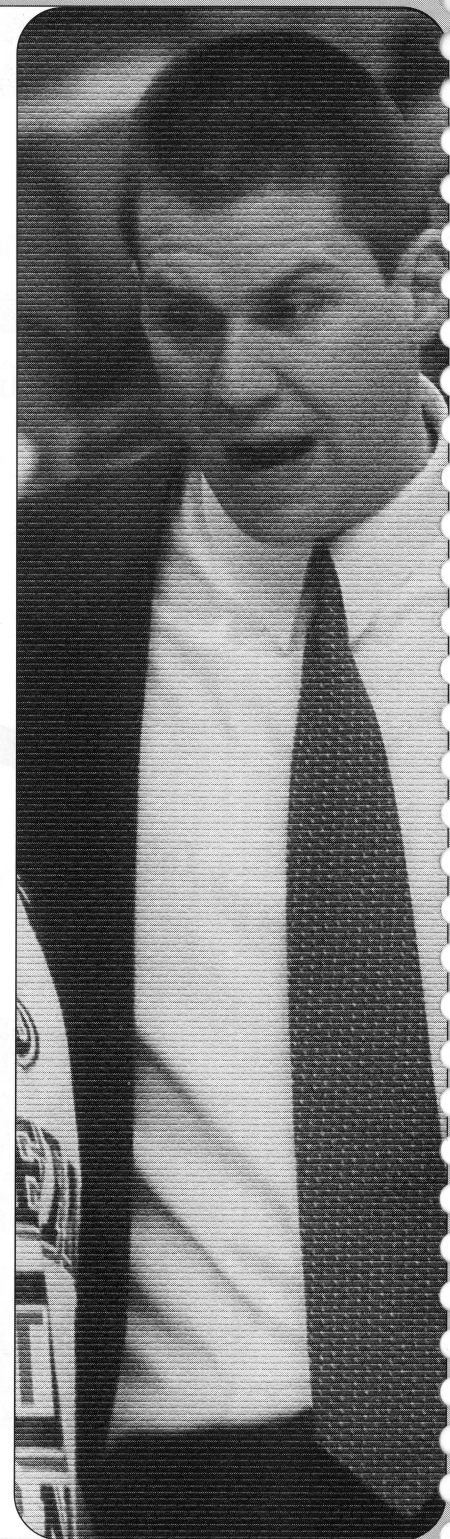
In November 2001, the Eagles will fly to Orlando, Florida, and Disney World to play in the 2001 Disney Division II Tip-off Classic. The trip will be the third time in as many seasons and the fourth time in seven seasons that USI has visited Florida and/or played in Disney's Wide World of Sports Complex.





GENERATION NEXT 

PEPSI, PEPSI-COLA, GENERATION NEXT and the Pepsi Globe design are trademarks of PepsiCo, Inc.





**AIR CONDITIONING
BRAKES
TIRES & TUBES
WHEEL ALIGNMENT**



ZELLER'S MASTER TIRE

4951 W. Lloyd Exwy • Evansville, IN

MASTER TIRE & ACCESSORIES

905 W. Columbia Street • Evansville, IN

Bryan Zeller
David Zeller
Jim Zeller
Chuck Zeller

“GO EAGLES”



AMERICAN OWNED • AMERICAN MADE





CASINO AZTAR
THE REWARDS ARE ENDLESS AT CASINO AZTAR!

WHAT COULD BE MORE REWARDING THAN ENJOYING A FULL-SERVICE CASINO RIGHT HERE IN THE MIDWEST?
Casino Aztar continues to deliver you more!

- ★ A place for every taste with five outstanding restaurants!
- ★ Action-packed gaming with popular and new slots arriving all the time!
- ★ A luxurious 250 room hotel!
- ★ Plus, Casino Aztar offers live entertainment seven nights a week!

The rewards are endless at Casino Aztar and they're all waiting for you!

CORRY'S RIBS & BBQ

OVER 1,300 HOT SLOTS!

CASINO AZTAR
 An Aztar Corporation Casino

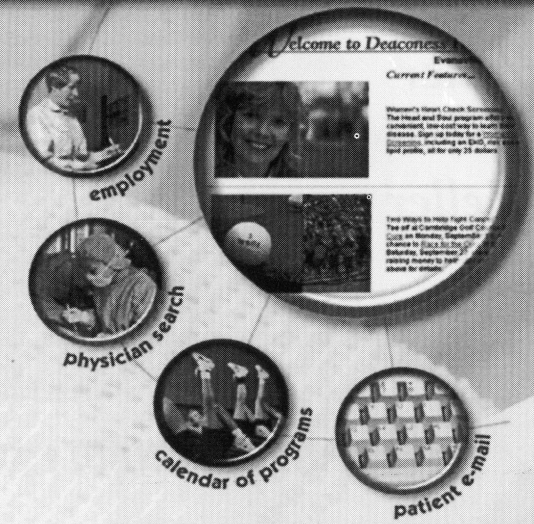
1-800-DIAL-FUN
 421 N.W. Riverside Drive
 Evansville, IN 47708
 www.casinoaztar.com

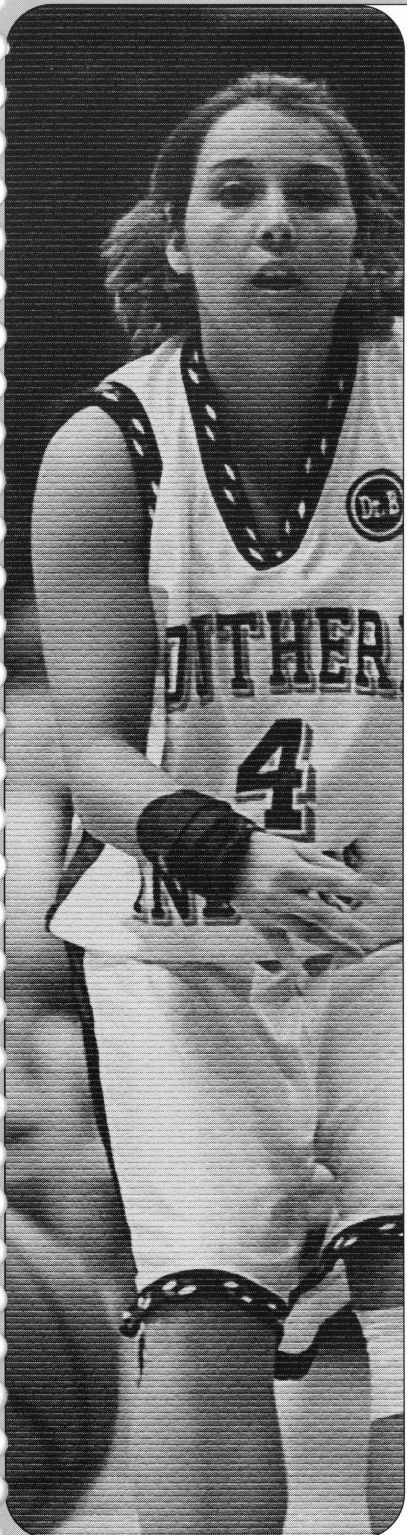
Every Day's A PARTY!

www.deaconess.com

Your information link to Deaconess Hospital.

Browse our Web pages to learn all that Deaconess has to offer. From our services to special events, you'll find it at www.deaconess.com.





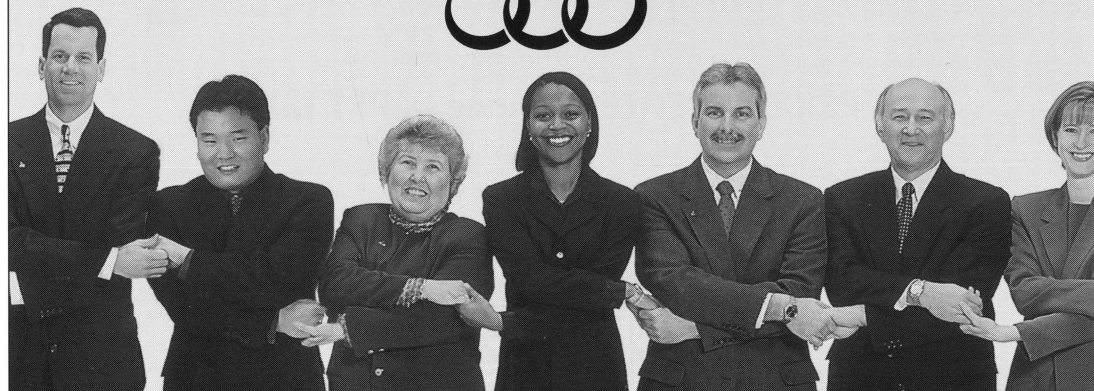
GO
SCREAMING
EAGLES

Team play is our game plan.

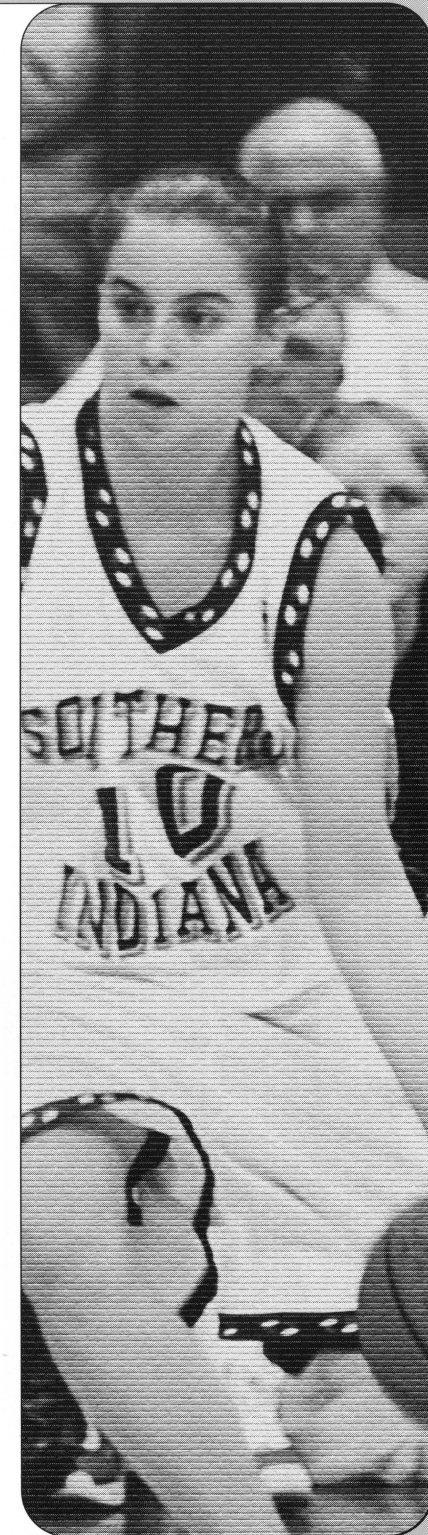
From one Evansville institution
to another – Go Team!

Thank you for making us your bank in Evansville.
For over 150 years, we've delivered personal and
business financial solutions to the tri-state area.
Today, we're proud to be a part of many great teams.

Stop by your neighborhood Integra Bank today
or call us at 800-467-1928



Together works...for you.





Cheering the Home Team.



Inside every player, beats the heart of a champion.
And in the heart of every champion,
lives the spirit of teamwork.

Yesterday. Today. Tomorrow.
OLD NATIONAL
Your bank for life!™



www.oldnational.com

MEMBER FDIC

*Best Wishes to the
University of Southern Indiana
Basketball Team!*

Join us after the game for
1/2 PRICE APPETIZERS during HAPPY HOUR!
3-7 pm & 10 pm 'til close

*Eatin' Good
In The Neighborhood*



www.tandk.com

Visit us at Either of Our Evansville Locations:

5100 East Morgan Avenue
471-0929

2506 South Third Street
232-2661





The Winning Game Plan!

For all your pre-game & post-game party plans, make the break to Shyler's Memphis Pit Bar-B-Q. Come on in for a delicious meal or carry-out a complete party for your entire crew.

Shyler's Pick-Up Party

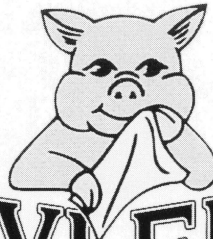
Everything you need for the perfect party. Enjoy tender pulled pork & two delicious side dishes, complete with bread, pickles, onions, paper supplies & utensils.

Approx.

\$3.95

Per Person

Also, ask about Shyler's Complete Catering. We deliver & serve all-you-can-eat pulled pork & two sides for groups of 100-3,000 for approximately \$4.95 per person.



SHYLER'S

MEMPHIS PIT BAR-B-Q

Green River Road, just south of Lloyd Expressway • 476-4599



1997 NCAA II Finalist • NCAA II Appearances: 1995, 1996, 1997, 1998, 2001

Screaming EAGLES

UNIVERSITY OF
SOUTHERN INDIANA



2001-02 Women's Basketball Team

NCAA II ELITE EIGHT Appearances: 1997, 2001 • GLVC Championships: 1995, 1997, 1998, 2001