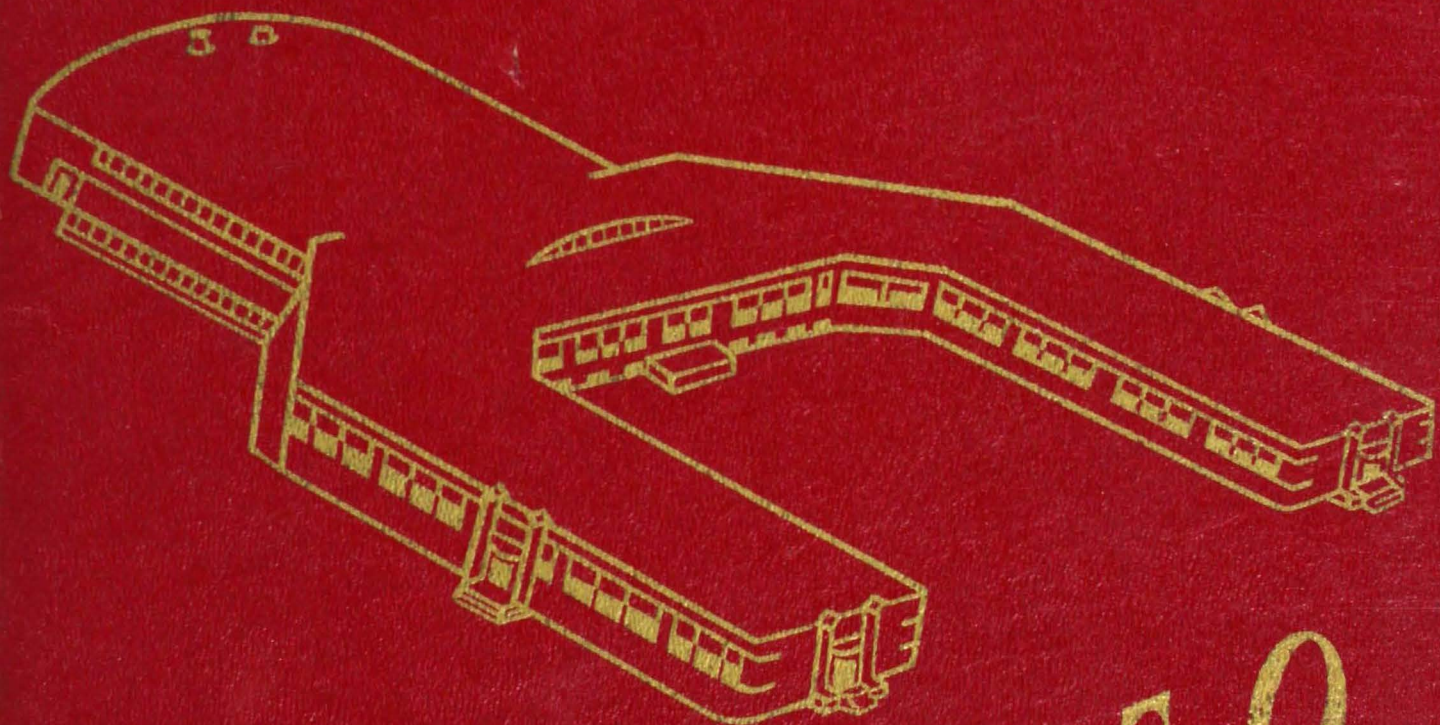


Hi-lights

MD



1950

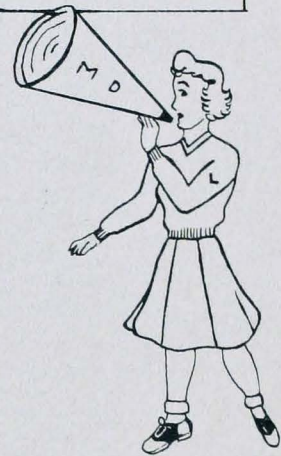


ST FERDINAND CHURCH
P. O. BOX 156
FERDINAND, IN. 47532



Mater Dei
Yearbook
Blank Page

M D Highlights
1950



LOIS FOLZ

Published by

MATER DEI WEST HIGH SCHOOL

1300 Harmony Way Evansville 12
Indiana

Editor	Jerry Riffert
Assistant Editor	Dorothy Hertel
Business Manager	Pat Marx
Advertising Manager	Ray Knoll
Circulation	Rita Ray
Treasurer	James Ochs
Faculty Consultants	Father Lautner
.	and Sister Irmgard, O.S.B.



Dedication

To Almighty God, to whom
be all honor and glory
from whom came the
grace and strength to all
those who were His willing
instruments in planning
and bringing to reality
our school.

To the Most Reverend Henry J.
Grimmelsman, S.T.D.,
Bishop of Evansville, whose
vision conceived and whose
untiring efforts gave birth
to our school.

To the thousands of loyal
clergy and laity of Evans-
ville and the Diocese
through whose cooperation
and generosity an ambi-
tious dream became a
glorious reality.

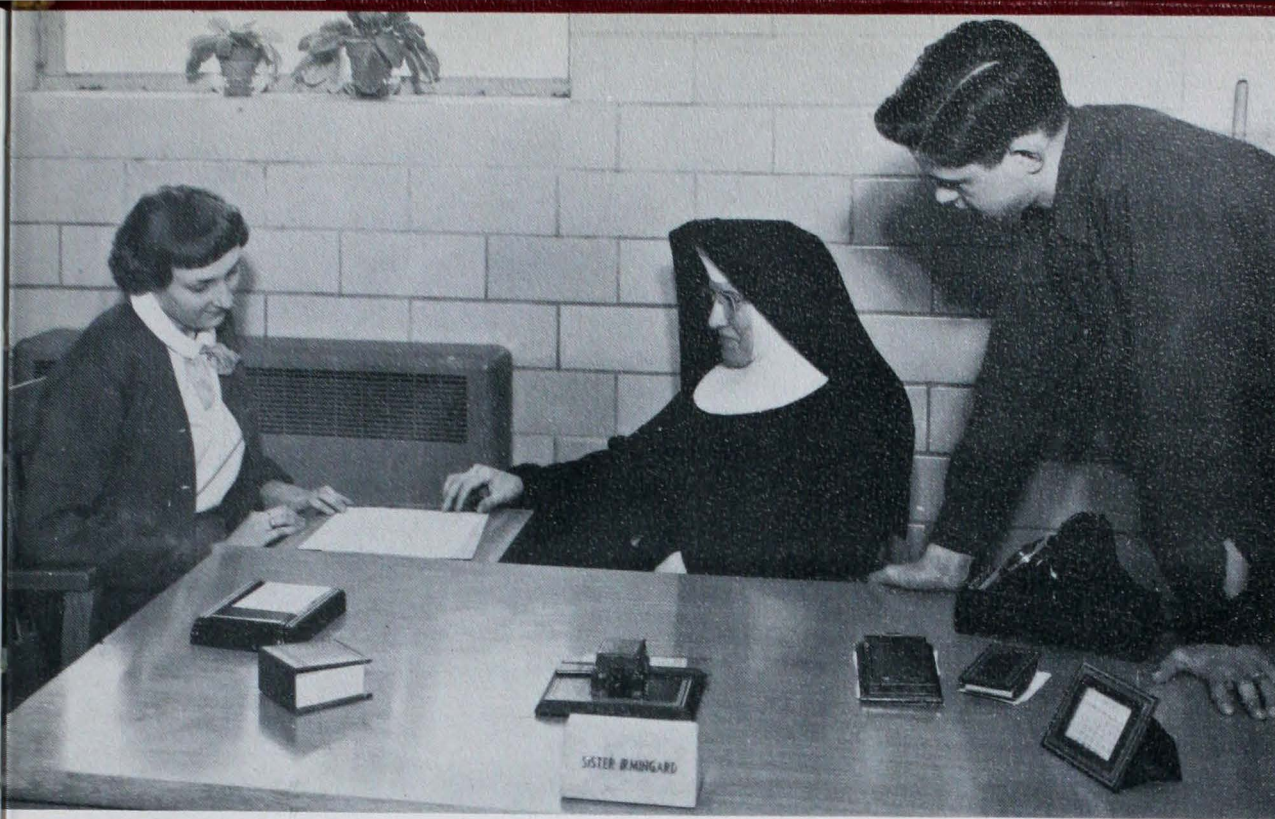
VERITAS ET PAX
EVANSVILLE



The Most Reverend Henry J. Grimmelsman, S.T.D.,

Bishop of the Catholic Diocese of

Evansville



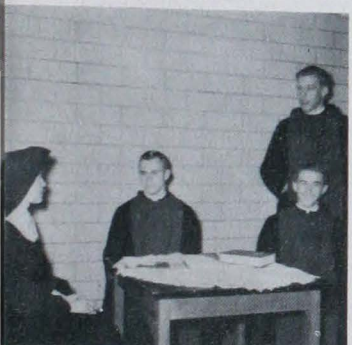
Catholic in Spirit

Benedictine in Method

"Hearken, O my son, to the precepts of thy master, and incline the ear of thy heart; willingly receive and faithfully comply with the admonition of thy loving father, that thou mayest return by the labor of obedience to Him from whom thou hast departed by the sloth of disobedience."

"We have, therefore, to establish a school of the Lord's service, in the institution of which we hope to ordain nothing that is harsh or difficult. But if anything somewhat severe be laid down, as reason may dictate, in order to amend faults or preserve charity, do not straight-way depart full of fear from the way of salvation which way cannot be entered upon except by beginnings which are difficult. But when one shall have advanced in this manner of life and in faith, he shall run with his heart enlarged and with an unspeakable sweetness of love on the way of God's commandments."

Prologue to the Holy Rule
written by St. Benedict.





REV. WILLIAM LAUTNER
SUPERINTENDENT
RELIGION; SOCIOLOGY



SISTER MARY IRMGARD O.S.B.
PRINCIPAL
CLOTHING

SISTER MARY AQUINA
ENGLISH; SOCIAL STUDIES

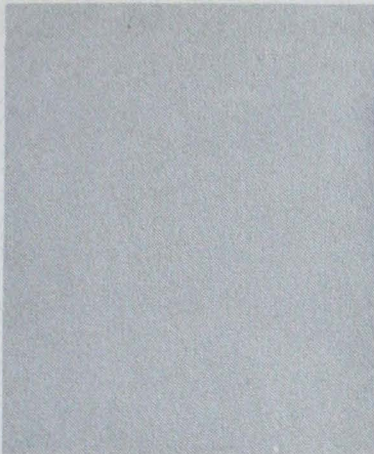
SISTER MARY BARBARA
MATHEMATICS



SISTER CLAUDIA
ART; SPANISH

MR. PAUL ELLERT
MATHEMATICS; BIOLOGY; PHYSICS





FATHER CLEM HUT (NOT PICTURED)
RELIGION

SISTER MARY JOSEPHA, R.N.
CHEMISTRY; FOODS



SISTER MARY KATHLEEN
MUSIC; GLEE CLUB

SISTER MARIETTA
MATHEMATICS; BIOLOGY



MISS ETHEL PARKS
PHYSICAL EDUCATION; OCCUPATIONS

SISTER MARY PRISCILLA
ENGLISH

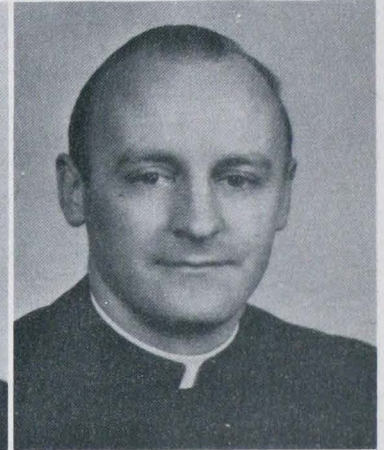
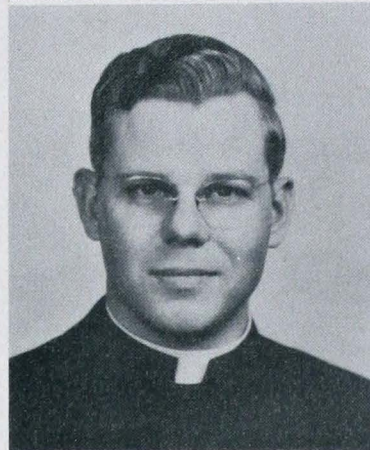
SISTER MARY REGIS
COMMERCIAL

SISTER MARY THERESE
LIBRARIAN; ENGLISH



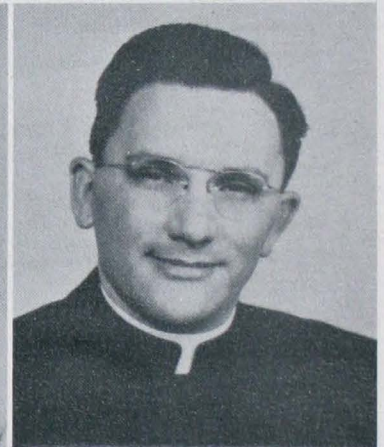
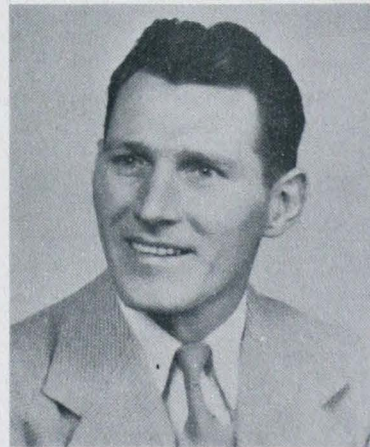
FATHER SYLVESTER SCHROEDER
ATHLETIC BUSINESS MANAGER;
RELIGION; LATIN

FATHER CARL SHETLER
RELIGION; LATIN



MR. LEN WILL
COACH; HEALTH

FATHER ROMAN VOLLMER
RELIGION; GLEE CLUB







SENIORS

Now and for the past three years

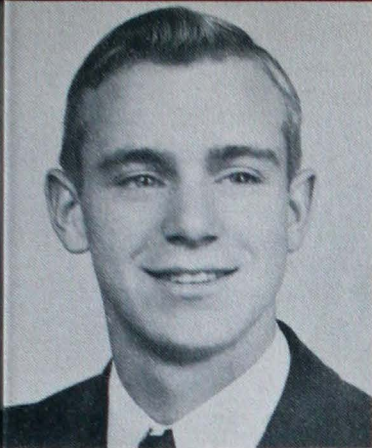
To her seniors a school must look for student leadership, school spirit, and scholastic idealism. It may be rightfully said that a school is seldom better than her seniors.

To the Seniors of 1949-50, MATER DEI'S first graduates, our school owes a special debt of gratitude. Our first graduates are real pioneers, having come to us as freshmen, the first and only class in the school; from there they and MATER DEI grew up together.

May the leadership, spirit, and idealism, which they gave to MATER DEI be indicative of that which they shall continue to give to a world that so sadly stands in need of these qualities.

Senior Class Officers 1949-50, reading left to right:

Treasurer	Clarence Schoenbachler
President	Tom Hartman
Secretary	Doris Ann Rexing
Vice-President	Susie Richey



BILL ALSTADT
 ENTERED JAN. 1949; GRADUATED ST. BONIFACE; ASSEMBLIES 3,4; GLEE CLUB 4; ROTARY AWARD 3; YEAR BOOK 4; O.A.T. AWARD 3.



JENNIE LOU ANSON
 ENTERED SEPT. 146; GRADUATED ST. BONIFACE; GLEE CLUB 1,2,3,4; SPRING MUSICAL 3; MISSIONS 1,2; G.A.A. 4; PAPER 1; ASSEMBLIES 1,2; ANNEXCAPADES 1.



BETTY ANN BRISTOW
 ENTERED SEPT. 146; GRADUATED SACRED HEART; ORCHESTRA 1,2,3; GLEE CLUB 1,2,3; SPRING MUSICAL 3; MAY CROWNING 1,2,3; MISSIONS 1,2; G.A.A. 4; SCHOOL PAPER 4; ASSEMBLIES 1,2,3,4; GREGG TYPING AWARD 3; ESSAY AWARD 3; HONOR MONOGRAM 1,2; C.T. GOLD PIN.



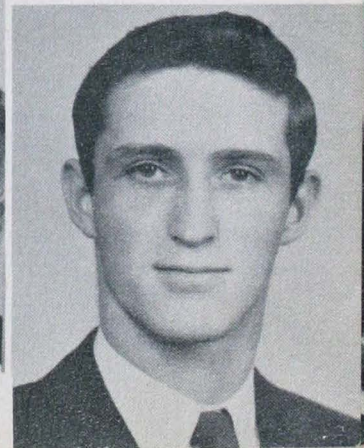
SHIRLEY ANN BUMB
 ENTERED SEPT. 146; GRADUATED SACRED HEART; GLEE CLUB 1,2,3,4; SPRING MUSICAL 3; MAY CROWNING 1,2; MISSIONS 1,2; G.A.A. 4; SCHOOL PAPER 4; ASSEMBLIES 1,2,4; DANCE COMMITTEE 4; LEADERS CLUB 4; TYPING GREGG AWARD 3; ANNEXCAPADES 1.

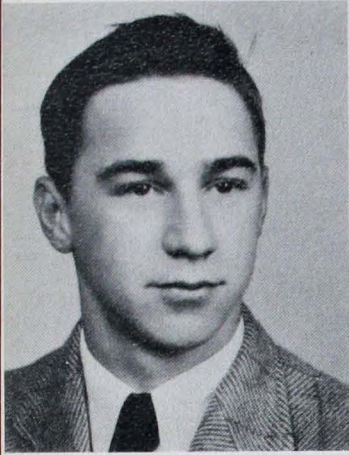
RONALD ANTEY
 ENTERED SEPT. 146; GRADUATED ST. BONIFACE; ORCHESTRA 1,2,3,4; ASSEMBLIES 1,2,3,4; GLEE CLUB 1,2; SCHOOL PAPER 1,2; GREGG TYPING AWARD 3; SPRING MUSICAL 3; MISSIONS 1,2; ANNEXCAPADES 1.

BETTY BERRY
 ENTERED SEPT. 147; GRADUATED ST. JOSEPH KY.; CLASS PRESIDENT 3; GLEE CLUB 2,3,4; SPRING MUSICAL 3; G.A.A. 4; ASSEMBLIES 2,3,4; DANCE COMMITTEE 3; TYPING GREGG AWARD 3; GREGG SHORT-HAND AWARD 3; MISSIONS 2.

DOROTHY MAE BITTNER
 ENTERED SEPT. 148; GRADUATED ST. JAMES; GLEE CLUB 4; MAY CROWNING 3; O.A.T. AWARD 3.

ROBERT BELL
 ENTERED SEPT. 146; GRADUATED SACRED HEART; ORCHESTRA 3; ASSEMBLIES 1,2,3; GLEE CLUB 1,2; FOOTBALL LETTER 4; SPRING MUSICAL 3; BENGAL BOUTS 2,3; ANNEXCAPADES 1; INTERMURAL CHAMPS 4.





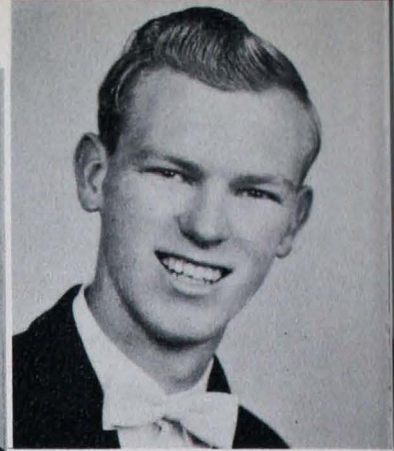
WALTER FOLZ
ENTERED SEPT. 146; GRADUATED ST. BONIFACE; ASSEMBLIES 1,2; DANCE COMMITTEES 3; CLASS SECRETARY 3; GLEE CLUB 2; FOOTBALL LETTER 4; MISSIONS 1,2; ANNEXCAPADES 1.



EARLENE FOX
ENTERED SEPT. 146; GRADUATED ST. BONIFACE; "YES MOTHER" 2; GLEE CLUB 1,2,3,4; SPRING MUSICAL 3; MAY CROWNING 1; MISSIONS 1,2; G.A.A. 4. SCHOOL PAPER 1,2; ASSEMBLIES 1; DANCE COMMITTEES 3,4; LEADERS CLUB 4; ACTIVITIES CHAIRMAN 4; ANNEXCAPADES 1; YEAR BOOK 4.



MARY ANN FUELNER
ENTERED SEPT. 146; GRADUATED SACRED HEART; GLEE CLUB 1,2,3,4; SPRING MUSICAL 3; MISSIONS 1,2; G. A.A. 4; ASSEMBLIES 1; GREGG TYPING AWARD 3; GREGG SHORTHAND AWARD 3.



JAMES CRUZ
ENTERED SEPT. 146; CHRISTMAS PROGRAM 2; GRADUATED ST. BONIFACE; MECHANIC ARTS 3,4; ORCHESTRA 1,2; MISSIONS 1,2.

ESTHER GREWE
ENTERED SEPT. 146; GRADUATED ST. BONIFACE; GLEE CLUB 1,2,3,4; SPRING MUSICAL 3; MISSIONS 1,2; ASSEMBLIES 1,2; G.A.A.



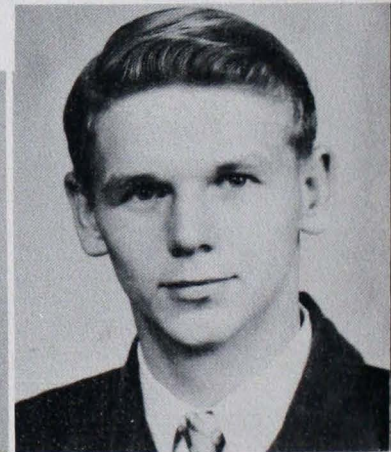
THOMAS HARTMAN
ENTERED JAN. 149; GRADUATED ST. ANTHONY; ASSEMBLIES 4; CLASS PRESIDENT 4; SCHOOL PAPER 4; ROTARY AWARD 4.



MARY ANN HART
ENTERED SEPT. 146; GRADUATED ST. WENDELL; GLEE CLUB 1,2,3; SPRING MUSICAL 3; MISSIONS 1,2; ASSEMBLIES 1,2.



BILL HELFRICH
ENTERED SEPT. 146; GRADUATED ST. JOSEPH; MECHANIC ARTS 3,4; MISSIONS 1,2.





CHARLES KERCHER
ENTERED 146; GRADUATED
ST. BONIFACE; "YES MOTHER"
2; GLEE CLUB 1; FOOTBALL
LETTER 4; STUDENT MANAGER
3,4; MISSIONS 1,2.



JOAN MARTIN
ENTERED SEPT. 146; GRADU-
ATED ST. BONIFACE; GLEE
CLUB 1,2,3,4; SPRING MUSI-
CAL 3; MISSIONS 1,2;
ASSEMBLIES 1,2; HONOR
MONOGRAM 1,2,3; G.A.A.
4; TYPING AWARD 3; SHORT-
HAND GREGG AWARD 3; LEADERS
CLUB 4.



PATRICIA KONRAD
ENTERED SEPT. 146; GRADU-
ATED ST. BONIFACE; GLEE
CLUB 1,2,3,4; SPRING MUSI-
CAL 3; MISSIONS 1,2;
ASSEMBLIES 1,2,3; G.A.A.
4.



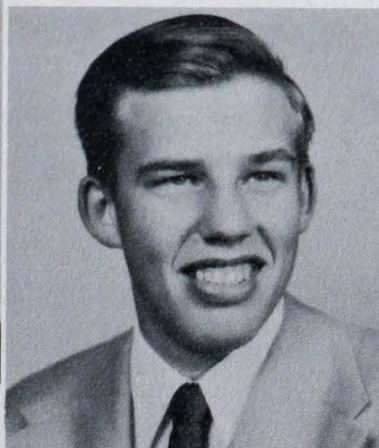
JOHN KISSEL
ENTERED SEPT. 146; GRADU-
ATED ST. JOSEPH; GLEE CLUB
2; CHRISTMAS PROGRAM 2;
MECHANIC ARTS 3,4.

MARY ANN MARX
ENTERED SEPT. 146; GRADU-
ATED ST. ANTHONY; GLEE
CLUB 1,2; MISSIONS 1,2;
SCHOOL PAPER 4; ASSEMBLIES
1,2,3; LEADERS CLUB 4;
TYPING GREGG AWARD 3;
SHORTHAND GREGG AWARD 3.

RAYMOND KNOLL
ENTERED 146; GRADUATED
SCOTT TOWNSHIP; ASSEMBLIES
1,2; "YES MOTHER" 2; DANCE
COMMITTEES 3; GLEE CLUB
1,2; SCHOOL PAPER 4; YEAR
BOOK 4; BOWLING CHAMPS
2,3; MISSIONS 1,2.

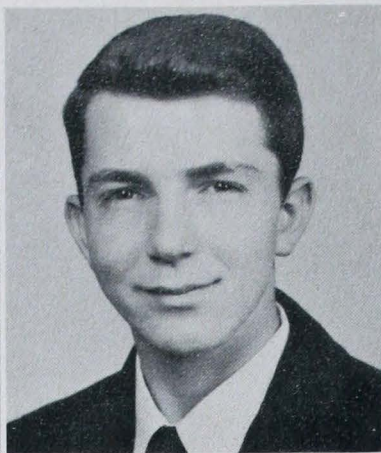
MARTHA KNEER
ENTERED SEPT. 146; GRADU-
ATED SACRED HEART; GLEE
CLUB 1,2,3,4; SPRING MUSI-
CAL 3; MISSIONS 1,2; ASSEM-
BLIES 1,2,4; G.A.A. 4.

PETE KNOWLES
ENTERED 146; GRADUATED
SACRED HEART; ASSEMBLIES
1,2,3; "YES MOTHER" 2;
DANCE COMMITTEES 2,3; GLEE
CLUB 1,2,3; FOOTBALL LET-
TER 4; ANNEXCAPADES 1;
BENGAL BOUT LETTER 3;
MISSIONS 1,2.





ROSE ANN MULLER
 ENTERED SEPT. 146; GRADUATED SACRED HEART; GLEE CLUB 1,2,3,4; SPRING MUSICAL 3; MAY QUEEN 3; MAY CROWNING 2; MISSIONS 1,2; STUDENT BOOSTER CLUB TREAS. 3; ASSEMBLIES 1,2,3; G. A. A. 4; TYPING GREGG AWARD 3; SHORTHAND GREGG AWARD 3; ANNEXCAPADES 1; HONOR MONOGRAM 1; YEAR BOOK 4.



JOHN MILLER
 ENTERED SEPT. 146; GRADUATED SACRED HEART; ASSEMBLIES 1,2,4; GLEE CLUB 1; ROTARY AWARD 1,2,3; SCHOOL PAPER 2; BASKETBALL LETTER 3,4; GOLF 2,3,4; MISSIONS 1,2; BOWLING CHAMPS 2,3.



BEVERLY ANN MOHR
 ENTERED SEPT. 146; GRADUATED SACRED HEART; "YES MOTHER" 2; GLEE CLUB 1,2,3,4; SPRING MUSICAL 3; MAY CROWNING 1,2,3; MISSIONS 1,2; ASSEMBLIES 1,2,3,4; G. A. A. TREASURER 4; TYPING GREGG AWARD 3; SHORTHAND GREGG AWARD.



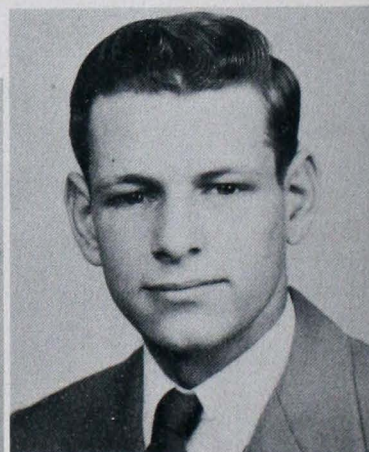
DONALD LITTLE
 ENTERED SEPT. 146; GRADUATED SACRED HEART; ASSEMBLIES 2; GLEE CLUB 1; SCHOOL PAPER 1,2,3,4; FOOTBALL LETTER 4; BASKETBALL LETTER 3; TYPING GREGG AWARD 3; YEAR BOOK 4; BOWLING CHAMPS 3.

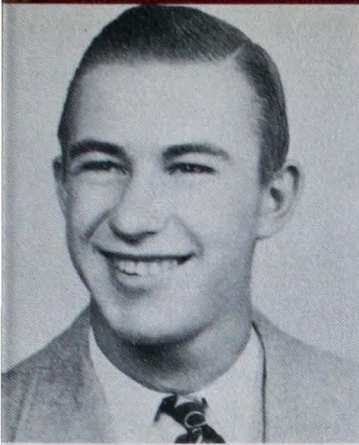
PATRICIA MARX
 ENTERED SEPT. 146; GRADUATED ST. AGNES; CLASS TREASURER 2; GLEE CLUB 1,2; MAY CROWNING 1,2,3; MISSIONS 1,2; SCHOOL PAPER 4; ASSEMBLIES 1,2; DANCE COMMITTEE 3,4; HONOR MONOGRAM 1,2,3; TYPING GREGG AWARDS 3; ANNEXCAPADES 1; YEAR BOOK 4.

PATRICIA MINNETTE
 ENTERED SEPT. 146; GRADUATED SACRED HEART; GLEE CLUB 1,2; MAY CROWNING 3; MISSIONS 1,2; ASSEMBLIES 1,2; ANNEXCAPADES 1.

DORIS JEAN McCLAIN
 ENTERED SEPT. 146; GRADUATED ST. BONIFACE; "YES MOTHER" 2; CLASS SECRETARY 1,2; GLEE CLUB 1,2; SPRING MUSICAL 3; MAY CROWNING 1,2; MISSIONS 1,2; SCHOOL PAPER 1,3,4; ASSEMBLIES 1,2,3,4; DANCE COMMITTEE 3,4; G. A. A. 4; LEADERS CLUB 4; TYPING GREGG AWARD 3; BOWLING CHAMPS 2.

KENNETH McATEE
 ENTERED SEPT. 146; GRADUATED ST. BONIFACE; ASSEMBLIES 1,2; GLEE CLUB 1,2,3; FOOTBALL LETTER 3,4; BASKETBALL LETTER 3; SPRING MUSICAL 3; MISSIONS 1,2; ANNEXCAPADES 1.





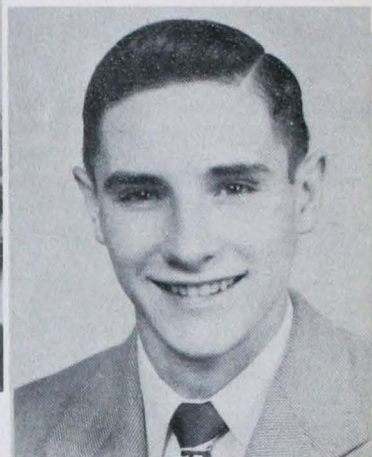
JOHN PAYNE
 ENTERED SEPT. 146; GRADUATED ST. AGNES; ASSEMBLIES 1,2,3,4; "YES MOTHER" 2; GLEE CLUB 1,2,3,4; ROTARY AWARD 2,3; SCHOOL PAPER 3; FOOTBALL LETTER 4; HONOR MONOGRAM 2,3; SPRING MUSICAL 3; MISSIONS 1,2; O.A. T. 3.



CHARLOTTE NEIMEIER
 ENTERED SEPT. 149; GRADUATED ST. JOSEPH; SCHOOL PAPER 4.



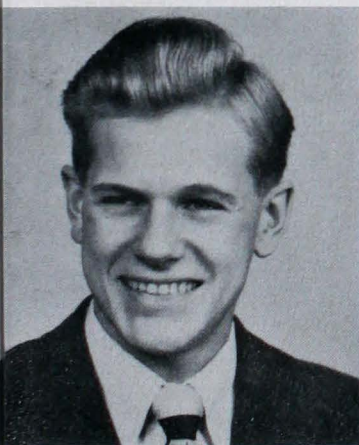
VIRGINIA LEE MAYER
 ENTERED SEPT. 148; GRADUATED ST. BONIFACE;; GLEE CLUB 3,4; SPRING MUSICAL 3; ASSEMBLIES 3; GREGG COMMITTEE 4; TYPING GREGG AWARD 3; YEAR BOOK 4.



JAMES OCHS
 ENTERED SEPT. 146; GRADUATED SACRED HEART; ASSEMBLIES 1,2,3,4; DANCE COMMITTEES 2,3; CLASS VICE-PRESIDENT 2,3; GLEE CLUB 1; ROTARY AWARD 1,2,3; FOOTBALL LETTER 4; BASKETBALL LETTER 3,4; HONOR MONOGRAM 1,2,3,4; MAY CROWN SPEECH 3; YEAR BOOK 4; MISSIONS 1,2.

MARY SUZANN RICHEY
 ENTERED SEPT. 146; GRADUATED SACRED HEART; "YES MOTHER" 2; CLASS VICE-PRESIDENT 4; GLEE CLUB 1,2,4; MAY CROWNING 2; MISSIONS 1,2; CHRISTMAS MADONNA 4; ASSEMBLIES 1,2,3,4; DANCE COMMITTEE 3,4; G.A.A. 4; TYPING GREGG AWARD 3; SHORTHAND GREGG AWARD 3; YEAR BOOK 4.

RICHARD PRESKE
 ENTERED SEPT. 148; GRADUATED ST. JOSEPH; ASSEMBLIES 4; GLEE CLUB 3,4; SPRING MUSICAL 3; YEAR BOOK 4.



MARY MARGARET ORTH
 ENTERED SEPT. 146; GRADUATED ST. BONIFACE; ORCHESTRA 1,2,3,4; GLEE CLUB 1,2,4; SPRING MUSICAL 3; MISSIONS 1,2; ASSEMBLIES 1,2; G.A.A. 4; ANEXCAPADES 1.

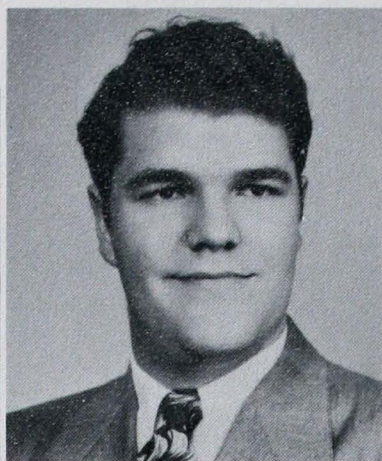
JEANETTE O'BRYAN
 ENTERED SEPT. 146; GRADUATED ST. MARY'S; GLEE CLUB 1,2,4; MAY CROWNING 2; MISSIONS 1,2; FALL FESTIVAL QUEEN 4; ASSEMBLIES 1,2,3; G.A.A. 4; LEADERS CLUB 4; QUEEN OF VALENTINE DANCE 2.





RITA RAY

GRADUATED ST. JAMES; ENTERED SEPT. 146; ORCHESTRA 1,2,3; CLASS TREASURER 3; SPRING MUSICAL 3; MAY CROWNING 1,2,3; MISSIONS 1,2; SCHOOL PAPER 2,3; ASSEMBLIES 1,2; ANNEXCAPADES; G.A.A. 4; LEADERS CLUB; YEAR BOOK 4.



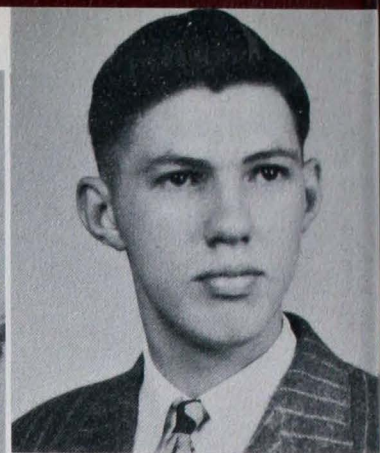
JERRY RIFFERT

ENTERED 146; GRADUATED ST. BONIFACE; ASSEMBLIES 1,2,3; "YES MOTHER" 2; DANCE COMMITTEES 2,4; GLEE CLUB 1,2; SCHOOL PAPER 1,2,3,4; HONOR MONOGRAM 3; SPRING MUSICAL 3; YEAR BOOK 4; MISSIONS 1,2; STUDENT BOOSTER CLUB PRES. 3; BOWLING CHAMPS 2; ANNEXCAPADES 1.



MARY ALICE REISING

GRADUATED SACRED HEART; ENTERED SEPT. 146; GLEE CLUB 1,2,3,4; MAY CROWNING 1,2,3; MISSIONS 1,2; SCHOOL PAPER 4; ASSEMBLIES 1,2,4; G.A.A. 4; ANNEXCAPADES 1; O.A.T. 3; C.T. AWARD 3.



CARL RALEY

ENTERED 146; GRADUATED HOLY TRINITY; ORCHESTRA 1,2; ASSEMBLIES 1; GLEE CLUB 1; SCHOOL PAPER 1; ANNEXCAPADES 1.

CAROLYN SCALES

GRADUATED ST. BONIFACE; ENTERED SEPT. 146; GLEE CLUB 1,2,3,4; SPRING MUSICAL 3; MISSIONS 1,2; ASSEMBLIES 1,2,3,4; DANCE COMMITTEE 4; G.A.A. 4; MAY CROWNING 2; O.A.T. 3; O.G.A. 3; YEAR BOOK 4; ESSAY AWARD 3.

DORIS ANN REXING

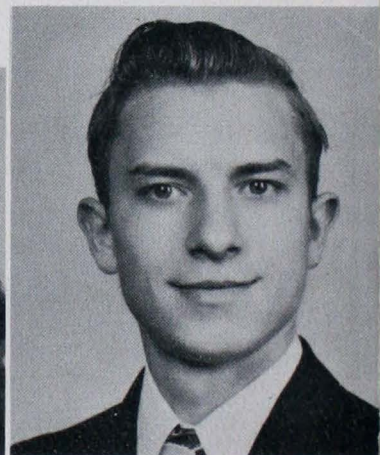
ENTERED JAN. 147; GRADUATED STS. PETER & PAUL; CLASS SECRETARY 4; GLEE CLUB 2,3,4; SPRING MUSICAL 3; MISSIONS 2; DANCE COMMITTEE 4; YEAR BOOK 4; G.A.A. 4.

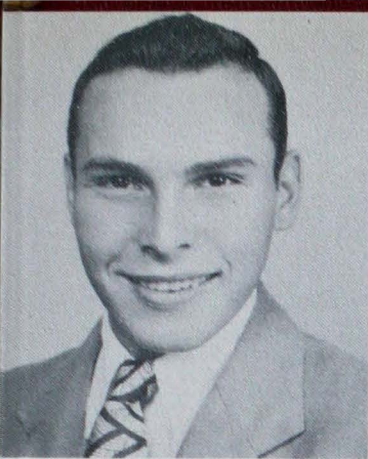
MARY ANN SCHELLER

GRADUATED ST. FRANCIS XAVIER; ENTERED SEPT. 147; GLEE CLUB 2,3,4; SPRING MUSICAL 3; MISSIONS 2; ASSEMBLY 2; O.A.T. 3.

JACOB SEIBERT

GRADUATED SACRED HEART; ENTERED SEPT. 146; MECHANIC ARTS 3,4.





RALPH SEIB
ENTERED SEPT. 146; GRADUATED SACRED HEART; ASSEMBLIES 1,4; GLEE CLUB 1; FOOTBALL LETTER 4; BASKETBALL LETTER 4; MISSIONS 1, 2.



BARBARA SCHAPKER
GRADUATED ST. BONIFACE; ENTERED SEPT. 146; GLEE CLUB 1,2,3,4; SPRING MUSICAL 3; MISSIONS 1,2; ASSEMBLIES 1,2,3; G.A.A. 4; O.A.T. 3.



BOB SCHENK
ENTERED SEPT. 146; GRADUATED ST. AGNES; ORCHESTRA 1,2,3,4; BASKETBALL LETTER 3; SPRING MUSICAL 3; BAND LETTER 4.



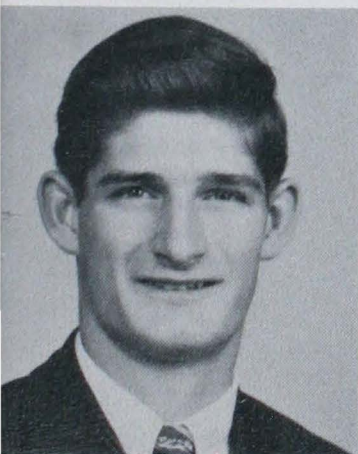
MARY JANE SCHELLER
GRADUATED ST. BONIFACE; ENTERED SEPT. 146; GLEE CLUB 1,2,3,4; SPRING MUSICAL 3; MISSIONS 1,2; STUDENT BOOSTER CLUB SEC. 3; SCHOOL PAPER 1; ASSEMBLIES 1,2,3; G.A.A. 4; ANNEXCAPADES 1; O.A.T. 3.

CLARENCE SCHOENBACHLER
ENTERED SEPT. 146; GRADUATED SACRED HEART; ASSEMBLIES 1,2,4; DANCE COMMITTEES 2,3; CLASS TREASURER 4; GLEE CLUB 1; KIWANIS AWARD 4 (FOOTBALL); FOOTBALL LETTER 4; BASKETBALL LETTER 3,4; GOLF 2,3,4; MISSIONS 1,2.

MARGARET SEILER
ENTERED SEPT. 146; GRADUATED SACRED HEART; GLEE CLUB 1,2,3,4; SPRING MUSICAL 3; MISSIONS 1,2; ASSEMBLIES 1,2; G.A.A. 4; O.A.T. 3.

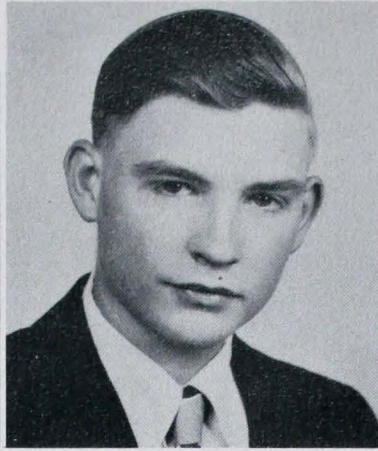
DELORES SIMPSON
ENTERED SEPT. 146; GRADUATION ASSUMPTION; ORCHESTRA 4; SCHOOL PAPER 4; LEADERS CLUB 4.

MARLENE SINGER
GRADUATED ST. BONIFACE; ENTERED SEPT. 146; "YES MOTHER" 2; GLEE CLUB 1,2,3,4; SPRING MUSICAL 3; MISSIONS 1,2; SCHOOL PAPER 1,2,3,4; ASSEMBLIES 1,2,3,4; LEADERS CLUB 4; G.A.A. 4; O.A.T. 3; O.G.A. 3.





IMOGENE STRATMAN
ENTERED SEPT. 146; GRADUATED ST. JAMES; GLEE CLUB 1,2,3,4; MISSIONS 1,2; SCHOOL PAPER 1; ASSEMBLIES 1,2; HONOR MONOGRAM 1,2,3; O.A.T. 3.



JOE TITZER
ENTERED SEPT. 149; GRADUATED ST. PHILLIPS.



JANE SMITH
GRADUATED ST. BONIFACE; ENTERED SEPT. 146; "YES MOTHER" 2; CLASS TREASURER 1; GLEE CLUB 1,2,3,4; SPRING MUSICAL 3; MISSIONS 1,2; SCHOOL PAPER 1,3,4; ASSEMBLIES 1,2,3,4; DANCE COMMITTEE 4; G.A.A. 4; LEADERS CLUB VICE-PRES. 4; HONOR MONOGRAM 1; ANNEXCAPADES 1; YEAR BOOK 4.



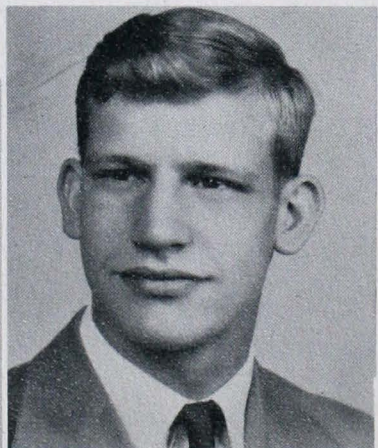
CHESTER SITZMAN
ENTERED SEPT. 146; GRADUATED ST. BONIFACE; BAND 1; CHRISTMAS ASSEMBLY 2; ASSEMBLIES 1; MECHANIC ARTS 3,4.

BETTY STRANGE
ENTERED SEPT. 146; GRADUATED ST. AGNES; GLEE CLUB 1,2,3,4; SPRING MUSICAL 3; MISSIONS 1,2; ASSEMBLIES 1,2; G.A.A. 4; QUOTO CLUB HONOR 4; LEADERS CLUB 4; O.A.T. 3; O. G.A. 3.

DON TEPOOL
ENTERED JAN. 149; GRADUATED ST. BONIFACE; SCHOOL PAPER 4; FOOTBALL LETTER 4; BASKETBALL LETTER 4; YEARBOOK 4.

SHIRLEY TOON
ENTERED SEPT. 146; GRADUATED ST. JOSEPH; "YES MOTHER" 2; GLEE CLUB 1,2; 3,4; MISSIONS 1,2; ASSEMBLIES 1,3; DANCE COMMITTEE 3,4; G.A.A. 4; LEADERS CLUB 4.

BILL STEPHAN
ENTERED SEPT. 146; GRADUATED ST. JOHN, ELBERFELD; ORCHESTRA 1,2,3,4; ASSEMBLIES 1,2,3; GLEE CLUB 1,2,3,4; ROTARY AWARD 2, 3; HONOR MONOGRAM 3; SPRING MUSICAL 3; BAND LETTER 2, 3,4; ANNEXCAPADES 1; MISSIONS 1,2; O.A.T. 3.





DELMAR WEIGAND
ENTERED SEPT. 146; GRAD-
UATED ST. JOSEPH; MECHANIC
ARTS 3,4.



ALVINA VEAL
ENTERED SEPT. 146; GRAD-
UATED ST. AGNES; GLEE CLUB
1,2,3,4; SPRING MUSICAL
3; MISSIONS 1,2; ASSEM-
BLIES 1,2; G.A.A. 4; LEAD-
ERS CLUB 4; O.A.T. 3; O.
G.A. 3.

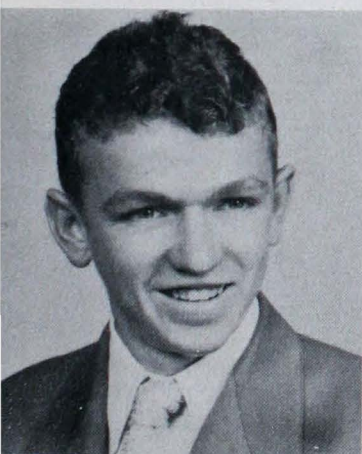


MILDRED WANNEMUEHLER
ENTERED SEPT. 146; GRAD-
UATED ST. PHILIPS; GLEE
CLUB 1,2,3,4; SPRING MUSI-
CAL 3; MISSIONS 1,2;
SCHOOL PAPER 1,4; ASSEM-
BLIES 1,2,3,4; DANCE COM-
MITTEE 3; HONOR MONOGRAM
1; G.A.A. 4; LEADERS CLUB
4; O.A.T. 3; MAY CROWNING
2; YEAR BOOK 4.



MARY JANE WOLFE
ENTERED SEPT. 146; GRAD-
UATED ST. PHILIPS; ORCHE-
STRA 1,2,3,4; GLEE CLUB 1,
2; SPRING MUSICAL 3; MAY
QUEEN 1,2; MAY ATTENDANT
3; MISSIONS 1,2; FALL FES-
TIVAL QUEEN 3; CHRISTMAS
MADONNA 1,2; SCHOOL PAPER
1; ASSEMBLIES 1,2,4; DANCE
COMMITTEE 3; G.A.A. VICE-
PRES. 4; LEADERS CLUB 4;
O.A.T. 3; ANNEXCAPADES 1;
HONOR MONOGRAM 2; YEAR
BOOK 4.

RALPH WINK
ENTERED SEPT. 146; GRAD-
UATED ST. BONIFACE; ME-
CHANIC ARTS 3,4.



ROSALIE WANNEMUEHLER
ENTERED SEPT. 146; GRAD-
UATED ST. BONIFACE; GLEE
CLUB 1,2,3,4; SPRING MUSI-
CAL 3; MISSIONS 1,2;
ASSEMBLIES 3; G.A.A. 4;
LEADERS CLUB 4; O.A.T. 3.



DOLORES WEINZAPFEL
ENTERED SEPT. 146; GRAD-
UATED ST. BONIFACE; SPRING
MUSICAL 3; MISSIONS 1,2;
SCHOOL PAPER 4; ASSEMBLIES
1,2,3,4; G.A.A. 4; HONOR
MONOGRAM 3; MAY CROWNING
2.



LETITIA SKEELS
ENTERED SEPT. 146; GRAD-
UATED SACRED HEART; GLEE
CLUB 1,2,3,4; SPRING MUSI-
CAL 3; MISSIONS 1,2;
SCHOOL PAPER 1; ASSEMBLIES
1; G.A.A. 4; O.A.T. 3.



SENIORS



DON TOELLE
 ENTERED SEPT. 146; GRADUATED SACRED HEART; ASSEMBLIES 1,2; CLASS TREASURER 1; GLEE CLUB 1; SCHOOL PAPER 1; GOLF 2,3,4.



BARBARA GOEBEL
 ENTERED SEPT. 146; GRADUATED ST. PHILIPS; GLEE CLUB 1,2,4; SPRING MUSICAL 3; MISSIONS 1,2; SCHOOL PAPER 1,3; ASSEMBLIES 1,2,3,4; DANCE COMMITTEE 3,4; G.A.A. 4; LEADERS CLUB PRESIDENT 4; HONOR MONOGRAM 1; TYPING GREGG AWARD 3; SHORTHAND 3; ANNEXCAPADES 1; MAY CROWNING 2.



CARL ZENTHOEFER
 ENTERED SEPT. 146; GRADUATED SACRED HEART; ASSEMBLIES 1,2,3; DANCE COMMITTEES 3; GLEE CLUB 1,3; GREGG TYPING AWARD 3; SPRING MUSICAL 3; MISSIONS 1,2; BENGAL BOUTS 3; ANNEXCAPADES 1; BOWLING CHAMPS 2.

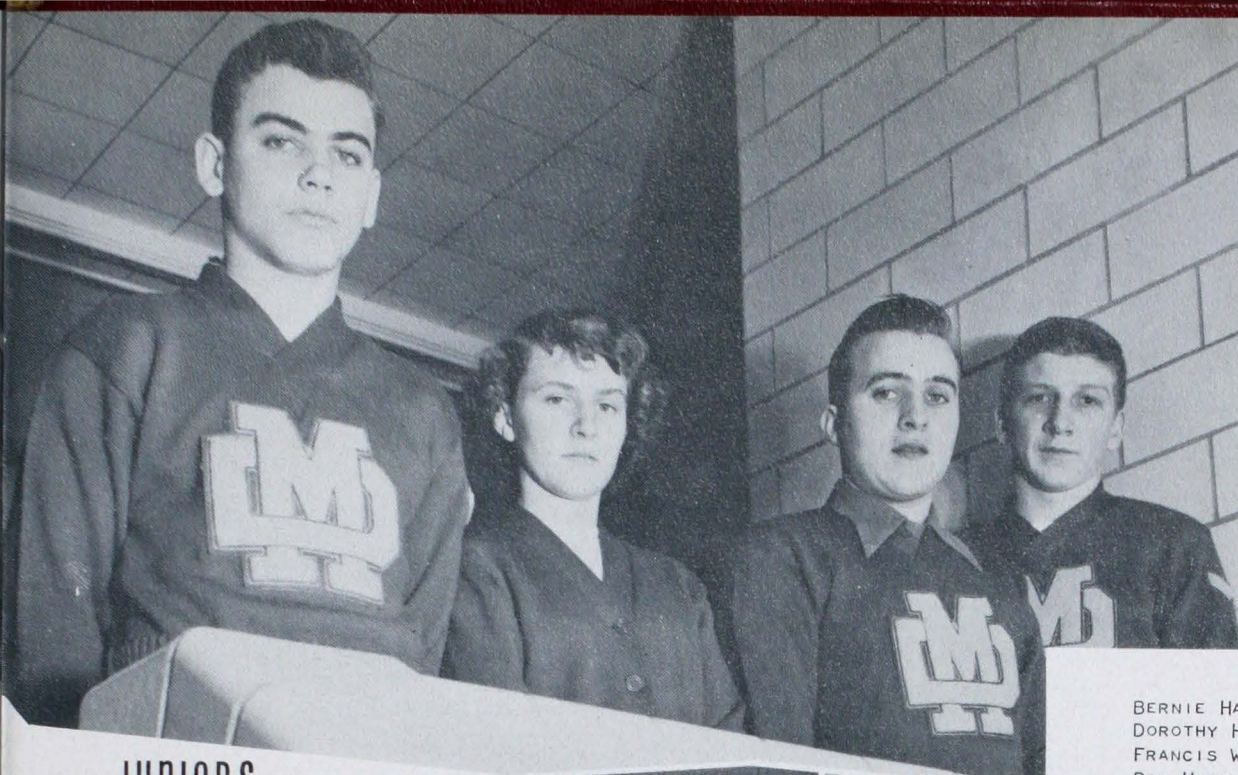
"God grant that I may grow
 to be,



that for which
 Thou hast destined me."

1950

C L A S S
O F F I C E R S



BERNIE HARTMAN
DOROTHY HERTEL
FRANCIS WITTMER
DON HOEFLING

JUNIORS



SOPHOMORES

SUZANNE FOLZ
BILL KRAMER
SUZANNE TOWNSEND
JERRY ALSTADT



FRESHMEN

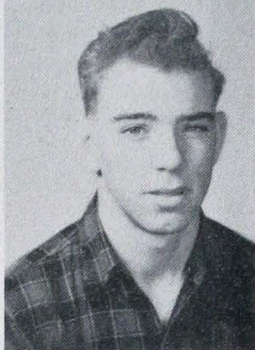
RONNIE REHRMAN
RUBY ANN SEIB
URBAN SEIBERT
GLORIA MARTIN



Charles Lindenschmidt

Virgil Mayer

JUNIORS 1951



Jerry MacAtee

George Meeks



Mary Miles

Jim Minnette

Barbara Moers



Jean Moers

Mary Lee Montgomery

Jim Muensterman



Teresa Neale

Jerry Neimeir

Bill Neimeir

Donald Debes

Helen Deitz



JUNIORS 1951

Doris DeVillez

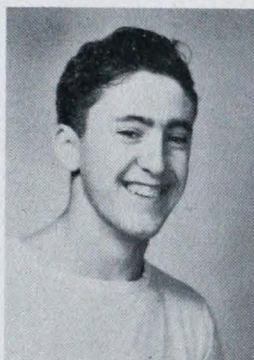
Patty Eberhard



Joseph Eickhoff

Helen Folz

Joan Folz



Lois Folz

Robert Gerst

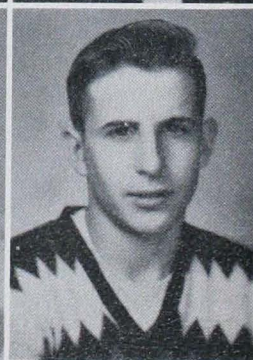
Dana Glaser



Evelyn Glaser

Harold Gossman

William Griesbacher





Robert Adams

Roy Backes

JUNIORS 1951



Franklin Baehl

Jeanine Barron



Eileen Berendes

Kenneth Bittner

Shirley Buehner



Bob Bumb

Thomas Caufield

Therese Clem



Ronald Coleman

Betty Sue Conrad

Sandra Cothern

JUNIORS 1951

Richard Hall

Joyce Hamel



Betty Hamer

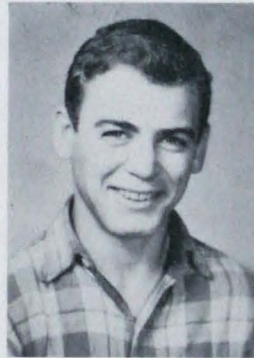
Jim Hardesty



Bernard Hartmann

Gloria Heneisen

Dorothy Hertel



Donald Hoefling

Mary Lou Humpert

Thomas Kempf

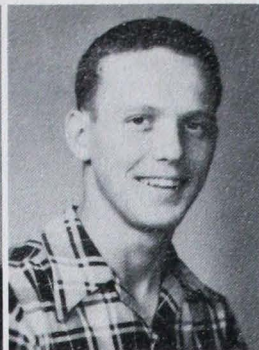


Jack Kollker

Donald Krack

Rebecca Lane





Margaret Nunning

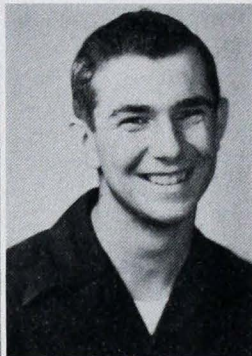
John Owen

JUNIORS 1951



Lawrence Paul

Carol Peters



Rose Mary Reising

Margie Scheller

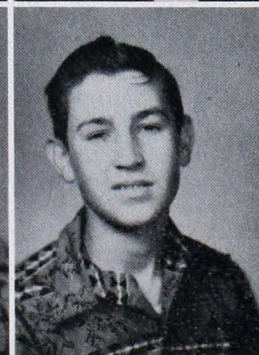
Jerry Schenk



Rita Schenk

Betty Schmitt

Florence Schmitt



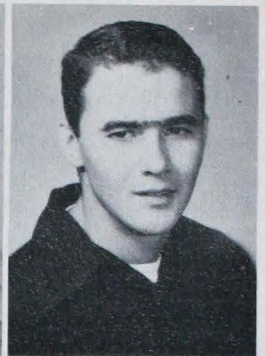
Robert Seibert

Vincent Sills

Barbara Singer

James Spillman

Robert Spillman



JUNIORS 1951

Patty Steckler

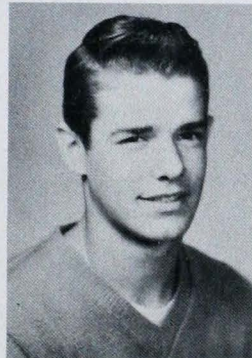
John Stephan



James Stratman

Ann Thole

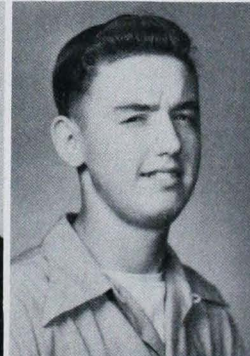
Mary Thole



Pauline Wannemuehler

Jim Will

Sharon Will



Richard Winterman

Lewis Wittmer

Margaret Wolf



SOPHOMORES 1952



1ST ROW: BILL KRAMER, GLEN MAGNESS, EVA MARIE HARTMANN, DAN MAURER, MARTHA HERTEL, NORMA HILLENBRAND. 2ND ROW: JOE MAY, RITA JARVIS, BERNARD MAYER, DONALD MAYSE, PAT KELLE, GERALD MEEKS. 3RD ROW: LEO MOERS, WALTER NEALE, BEVERLY KERCHER, JAMES NUNNING, MARY ANN KERN, DORETHA KISSEL. 4TH ROW: LEOJO NURRENBERN, MARGARET KNIGHT, JOHN OFFERMAN, PAUL PAYNE, GERALDINE KOCH, RICHARD RADIGAN. 5TH ROW: NORMAN RAY, THOMAS REYNOLDS, REGINA KOCH, DELANO SCHELLER, SYLVIA LEHMAN, MARGARET LUPFER. 6TH ROW: RICHARD SCHENK, CAROL MARX, LARRY SCHMIDT, WILLIAM SCHNAAR, DORIS MAYER, BOB SCHULZ.

SOPHOMORES 1952



1ST ROW: JERRY ALSTADT, NORBERT BELL, MARILYN BACKES, GERALD BERENDES, MARIETTA BAEHL, PAULINE BONE. 2ND ROW: FRANCIS BITTNER, PAT BROWNING, DON CHESHIRE, TED DANIELS, CAROL DEER, WILLIAM DAY, 3RD ROW: WILLIAM DEIG, JOHN DEZEMBER, BARBARA DEEVER, MERLE EFFING, BETTY JO EBERHARD, CONNIE ELPERS. 4TH ROW: DELMAR EVANS, MARY JANE ELSNER, GEORGE EVANS, ARNOLD FLITTNER, ROSALIE FEHRENBACHLER, LEONARD GANSMAN. 5TH ROW: JAMES HART, EDGAR HERTEL, CECELIA FLECK, DAVID HOLLINGSWORTH, SUSIE FOLZ, MARY JANE FULKERSON. 6TH ROW: BILL KEMPF, SHARON FRANK, CHARLES KOESTER, LAWRENCE KOEWLER, ROSELLA GOEBEL, RICHARD KORESSSEL.

SOPHOMORES 1952



1ST ROW: JOSEPH SEIBERT, RUDY SMITH, DELORES MESER, ERVIN SPAHN, JANE MUENSTERMAN, SHARON ROBERTS.
 2ND ROW: MARGIE ROLLETT, ELIZABETH SCHMIDT, HAROLD STECKLER, MARGARET SEIBERT, JAMES SULLIVAN, ALLEN SWAIN.
 3RD ROW: JERRY THOMPSON, RAYMOND WALTER, JANICE SINGER, LEO WEINZAPFEL, MARY STRANGE, JO ANN THOMAS.
 4TH ROW: DORIS TIEKEN, SUZANNE TOWNSEND, MARION WEIS, KATHLEEN VESSELS, JOHN WERNER, RAYMOND WEYER.
 5TH ROW: MARY WEBER, GUS WIESINGER, MARY AGNES WOLF.

NIGHT AND DAY
 IN THE WINTER



Blonnie Adams
Leonard Angermeier
Jane Antey
William Ball



Victor Barnett
Jerry Barron
Mary Frances Farron
Monna Barron



Richard Bassemeier
Bertha Bauer
Wilfred Baumgart
Robert Behme



Jack Board
Bob Bow
Joe Brenner
Pat Brenner



Sharon Brott
Carole Brown
David Buckman
George Caldwell



Anna Castleman
Paul Cheaney
Bonnie Clark
Shirley Claspell



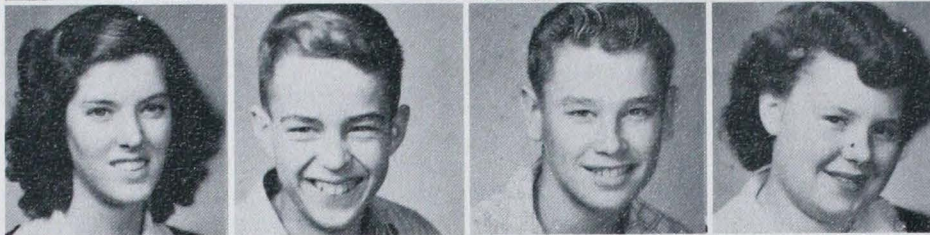
Nita Clevidence
Ervin Conrad
Jerry Craig
Betty Crow



FRESHMEN 1953



Mary Jane Dillman
Shirley Dosset
Bob Drone
Joe Dulin



Dellie Duncan
Neil Duncan
Gerald Eberhard
Shirley Eisenhauer



Evelyn Feller
Pat Ferguson
Ray Flittner
Alice Folz



Edna Folz
Rita Folz
Mary C. Frick
Joe Gardner



Gene Garnett
James Gerst
Joe Gerteisen



Jerry Geis
Darryl Glaser
James Glaser



Lowell Glass
Herbert Gorman
Val Grewe

FRESHMEN 1953

Pat Guetling
 Bob Hagel
 James Hagerman
 Jacqueline Hall



Ronald Hall
 Gloria Hart
 Jean Marie Hartman
 Don Hartman



Herman Hartweek
 Barbara Helfrich
 Joe Hertel
 Earl Hobbs



Joan Hoefling
 Bob Hornbrook
 Jerry Horstketter
 Billy Huett



Ronald Hupfer
 Virlee Jochum
 Carol Sue Kanowsky
 Jerry Kelle



Betty Kercher
 Agnes Kissel
 Cecilia Kissel
 Edward Kissel



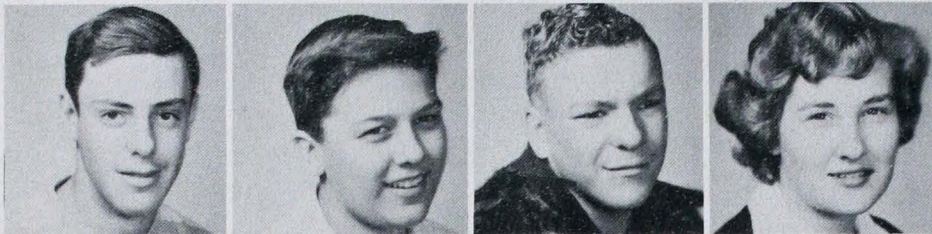
John Kissel
 Carolyn Knapp
 Mary Jane Koch
 Carolyn Kolb



FRESHMEN 1953



Irene Koressel
Francis Kormelink
Jim Kramer
Billy Kruchek



Donald Kuhr
Roger Lehr
Don MacGregor
Delores Martin



Gloria Martin
Ruth Matz
Rita Mayer
Shirley McGee



Monica Moers
Lucian Montgomery
Mary Mosby
Charles Moutoux



Verna Mueth
Thomas Mullen
Edward Muller
Herman Neuendorf



Harold Neuman
Charles Niemeier
Mary Anna Niemeier
Sylvia Niemeier



Don Noelke
Madeline Nunning
Richard Nunning
Jack O'Conner

FRESHMEN 1953

Betty Offerman
 Carolyn Orman
 John Orth
 James Parker



Verna Paul
 Gayla Peters
 Dixie Pike
 Jerry Preske



Marvin Preske
 Shirley Rebstock
 Ronald Rehrma
 Ronald Reiter



Jerry Reine
 Elgene Rexing
 Rita Rexing
 Bonnie Ritter



Irene Rummage
 Mary Joan Scales
 Mary Lee Schapker
 Joe Schenk



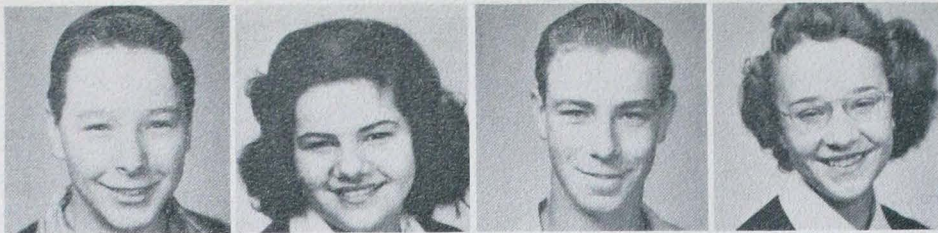
Mildred Schnur
 Rosie Schoenbachler
 Bill Scott
 Ruby Seib



Jim Seibert
 Urban Seibert
 Clayton Silver
 Carolyn Simon



FRESHMEN 1953



Richard Stolz
Charlotte Stratman
Herman Tenhumberg
Sharon Toelle



George Titzer
Bob Trainer
Mary Joan Tribble
Leonard Ulrich



Jack Varner
Joe Vessels
Sylvia Wagner
Annette Wannemuehler



Jim Wannemuehler
Sylvester Wargel
Robert Weber
Harold Weinzapfel



Shirley Winiger
Bertha Will
Carol Will
Mary Ann Will

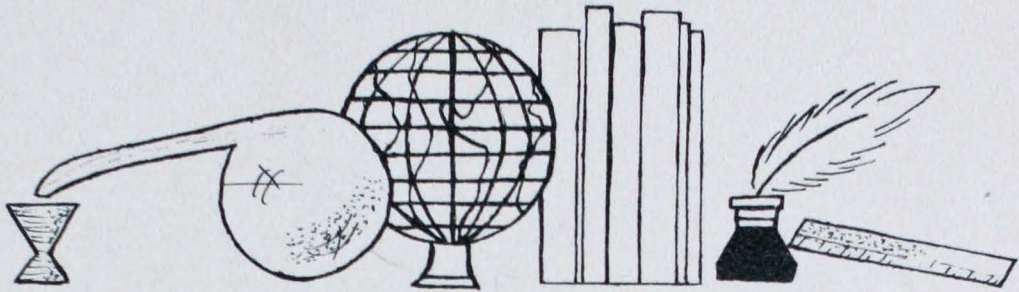


Rita Wink
Jerry Winterman
Joann Winterman
Betty Woods



Alice Wolf
Cecilia Zenthoefler
Richard Wuerth

FRESHMEN 1953



The most prized possession of any school is the Scholarship of its students. MATER DEI awards "High Honors" to those students who merit a mark of 95% or above in Conduct and Effort and whose class work merits grades distinguishing them among their fellow students as "outstanding."

The following students have merited this distinction for at least one grading period in each of their years at MATER DEI:

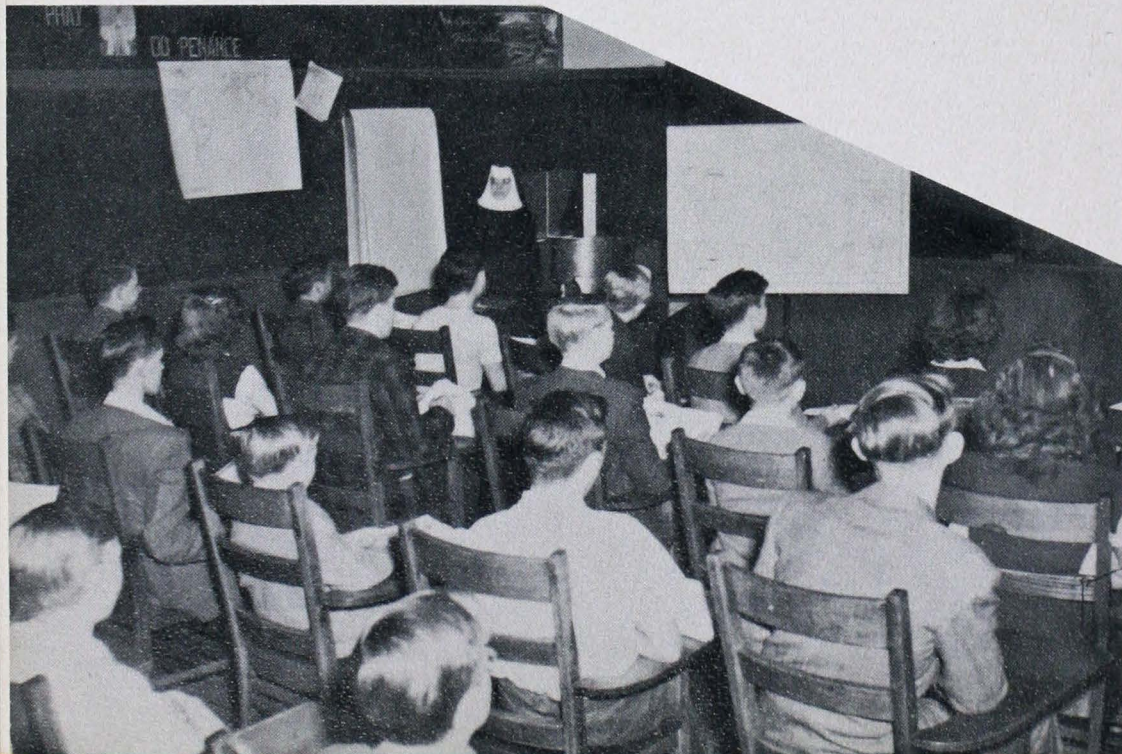
Seniors: Joan Martin, James Ochs, Imogene Stratman.

Juniors: Eileen Berendes, Margaret Nunning, Carol Peters, Patricia Eberhard, Jean Moers.

Sophomores: Suzanne Townsend, Delmar Evans, Rosella Goebel, Suzanne Folz, Carol Marx.



CLASSES



AT
THE
ANNEX

GIRLS'

CLASSES



Dream Girls



Judas
Judas
Who wants a
Judas
bag



ABCE
KLMP
TUVW
abcd
klmn
tuvw

ART IN DRAWING



ART IN COOKING





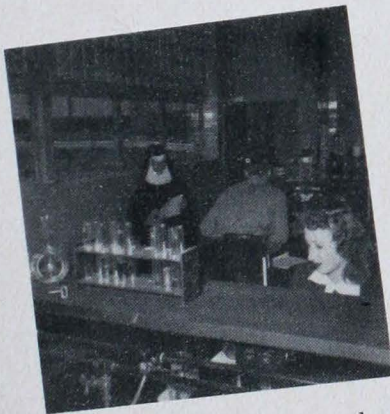
Deep in Thought

YOUNG

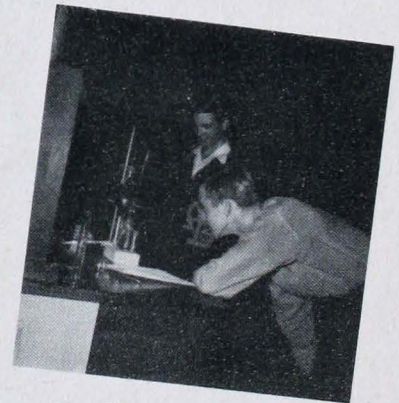


Any Questions?

SCIENTISTS

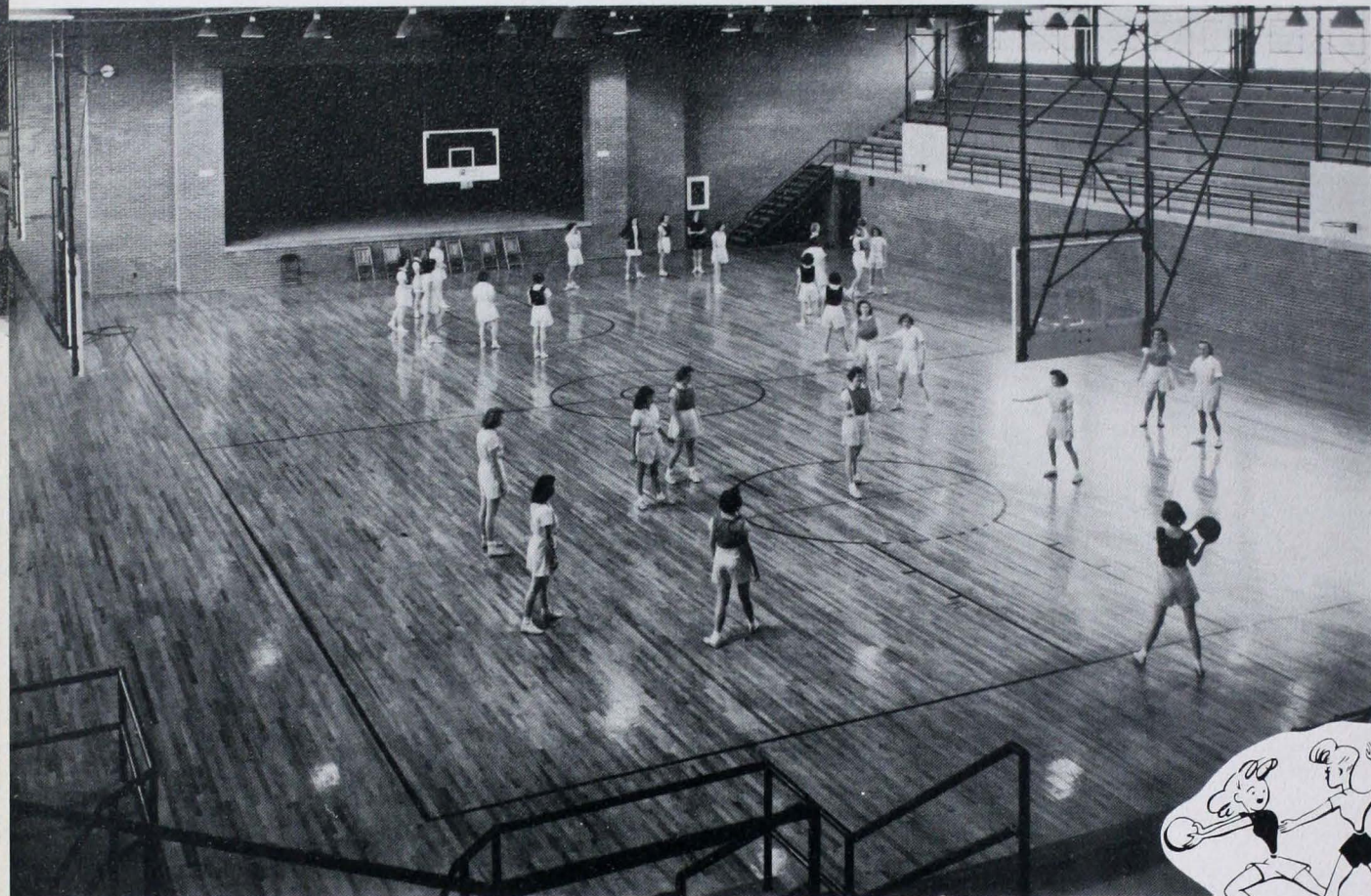


Everything in Hand



Distilling?
Water, that is.

GIRLS IN AND OUT OF ACTION



GYM

HOME NURSING



MD HIGHLIGHTS

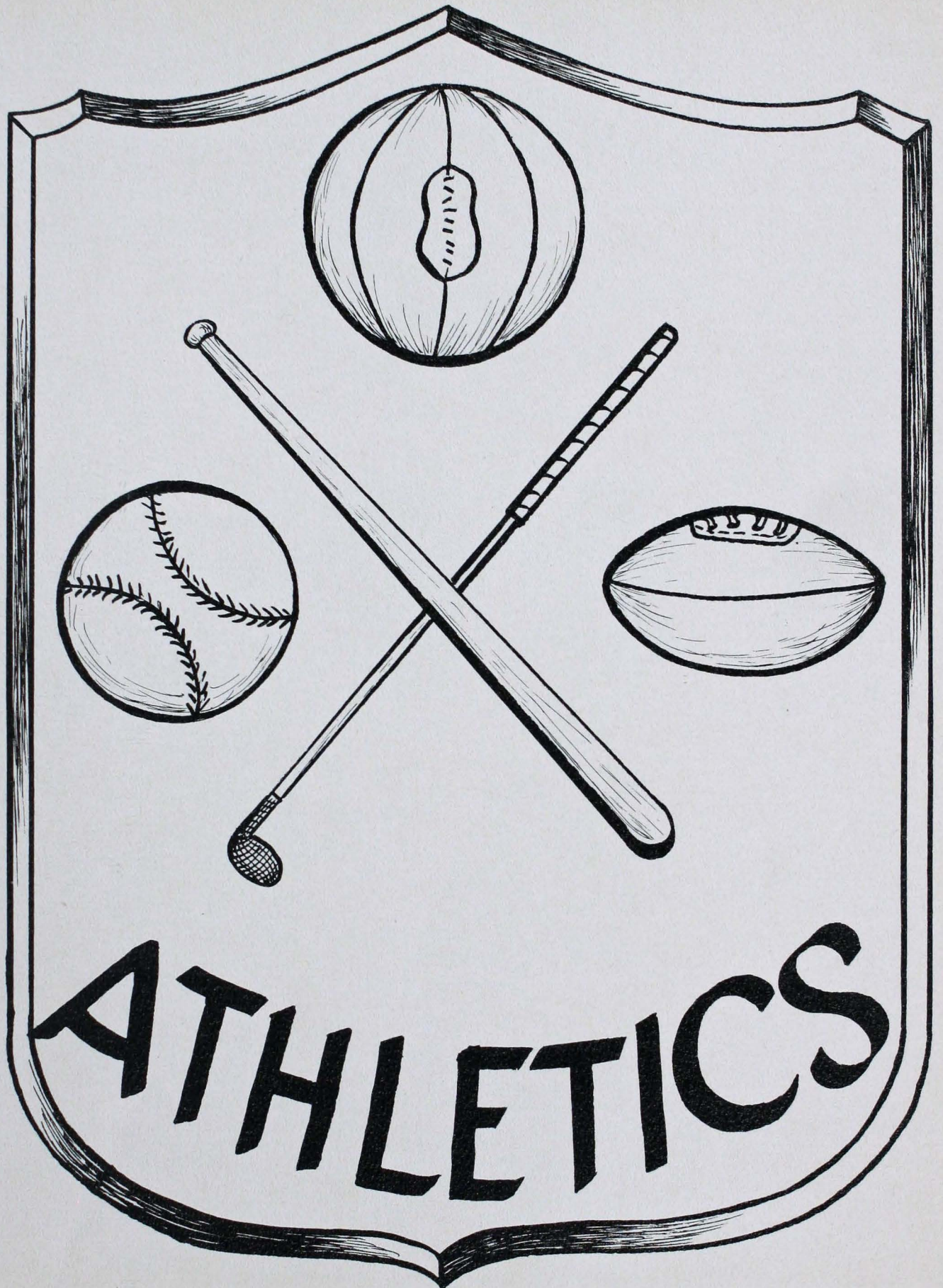


LEFT TO RIGHT, SEATED: EILEEN BERENDES, BETTY BRISTOW, JIM WILL - JR. EDITOR, JERRY RIFFERT - SR. EDITOR, MARLENE SINGER. STANDING, 1ST ROW: DOLORES SIMPSON, JANIE SMITH, DOLORES WEINZAPFEL, PAT EBERHARD, CAROL PETERS, SISTER THERESE, ROGER LEHR, SHIRLEY BUMB. STANDING, 2ND ROW: MARY ANN MARX, MARY ALICE REISING, RITA SCHENK, CHARLOTTE NIEMEIER, MILDRED SCHNUR, PAT MARX, BERNIE HARTMAN. STANDING, 3RD ROW: DORIS McCLAIN, MILDRED WANNEMUEHLER, DON TEPOOL, JACK KOLLKER, DON LITTLE, RAY KNOLL, ROY BACKES.

MD Highlights

LEFT TO RIGHT, SEATED: DOROTHY HERTEL, JIM OCHS, PAT MARX, JERRY RIFFERT, RITA RAY, RAY KNOLL. STANDING, 1ST ROW: DORIS REXING, VIRGINIA MAYER, MARLENE SINGER, SHIRLEY TOON, DORIS McCLAIN, SHIRLEY BUMB, SUE RICHEY, MILDRED WANNEMUEHLER, LOIS FOLZ. STANDING, 2ND ROW: BILL NIEMEIER, DON TEPOOL, BILL ALTSTADT, RICHARD PRESKE, DELORES WEINZAPFEL, JANIE SMITH, CAROLYN SCALES.

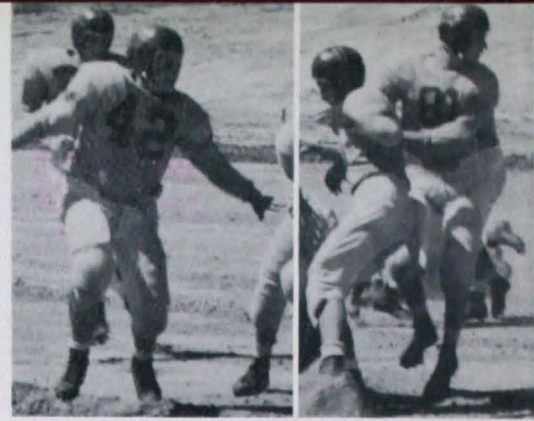




ATHLETICS



Varsity



Shinny



Ochs



Senator

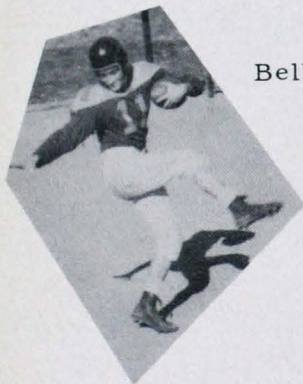


Gus



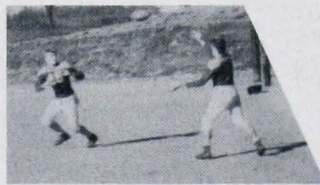
Shinny

VARSITY	
Mater Dei	6
Mater Dei	14
Mater Dei	19
Mater Dei	7
Mater Dei	0
Mater Dei	14
Mater Dei	18
Mater Dei	13



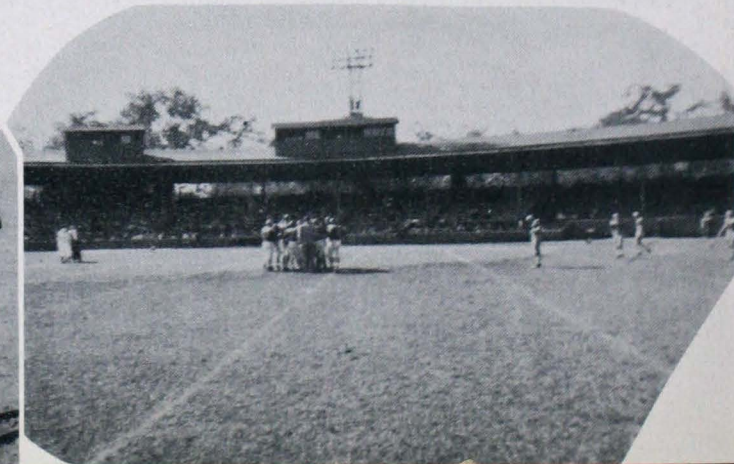
Bell

Bell and Teeps



Chub

Mac





Seniors



Waldo



Pete

SCHEDULE	
Carmi	0
Cadiz, Trigg High	0
Owensboro, St. Francis	0
Huntingburg	6
Sturgis	32
South Bend Central	7
Owensboro, St. Francis	6
Lincoln	27



Jim



Coach



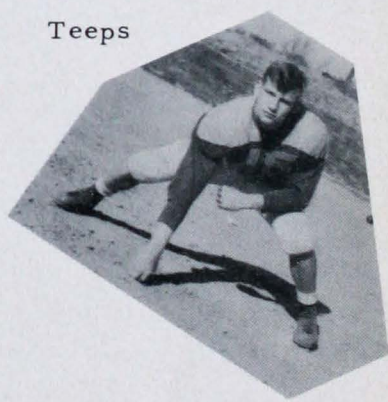
Toelle



Zen

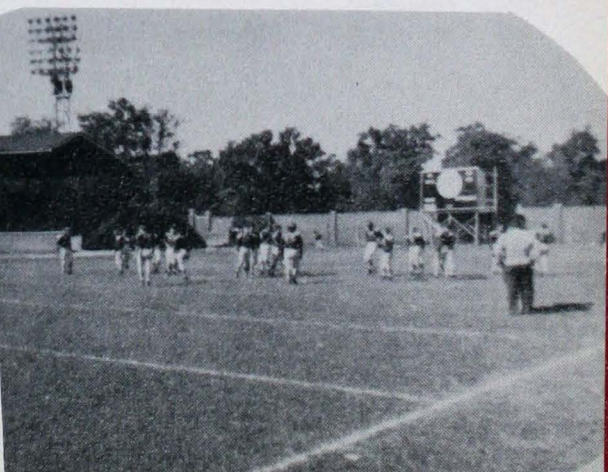


Seib



Teeps

Little





1ST ROW: COACH LEN WILL, KEN MCATEE, DON TEPOOL, JERRY SCHENK, BERNIE HARTMAN, JIM MUENSTERMAN, JOHN OWEN, WALTER FOLZ, JOHN PAYNE, BOB BELL, ASSISTANT COACH GUS PETERS. 2ND ROW: JIM HARDESTY, JIM STRATMAN, PETE KNOWLES, JIM MINETTE, DON LITTLE, CLARENCE SCHOENBACHLER, JIM OCHS, RALPH SEIB, BILL NEIMIER, CHARLES KERCHER, CARL ZENTHOEFER. 3RD ROW: DON HOEFLING, BOB SEIBERT, DON TOELLE, LEN GANSMAN, KEN BITTNER, BOB BUMB, LOUIE WITTMER, VIRGIL MAYER, ALLEN SWAIN, MERLE EFFING. 4TH ROW: JACK BOARD, GLEN MAGNESS, BOB TRAINER, DAVID BUCKMAN, URBAN SEIBERT, BOB BOW, JERRY HORSTKETTER, EARL HOBBS, PAUL PAYNE, JOHN DEZEMBER, FRANCIS KORMELINK. 5TH ROW: JIM WANNEMUEHLER, JOE DULIN, ANTHONY KUHLMAN, GEORGE MEEKS, LEO NURRENBURN, JOE MAY, BILL KRUCHECK, JIM SEIBERT, BOB DRONE, JERRY PRESKE. 6TH ROW: RICHARD EMGE, RICHARD BASSEMIER, GUS WIESINGER, ATHLETIC DIRECTOR FATHER SCHROEDER, VINCENT SILLS, BOB HAGEL, RONALD REHRMAN, CHARLES NIEMEIER.

FOOTBALL VARSITY

With Mater Dei in her Infancy, Coach Len Will issued the first call for candidates and was answered with a turnout of fifty-five boys.

With only three weeks before the first game in which to practice, Coach Will converted a determined group of raw inexperienced recruits into a group of well drilled and high spirited Wildcats.

The small but mighty Wildcats fielded their first football eleven September 16, 1949, as they met Carmi's Bulldogs on foreign soil and after a terrifically hard fought battle came home with their first football victory by a 6 to 0 count. They later went on to defeat Cadiz, Owensboro (2), Huntingburg and South Bend Central Catholic. Losing only to Sturgis's Golden Bears and Lincoln's Lions.



CAT'S PA!



FIRST ROW: JIM STRATMAN, CLARENCE SCHOENBACHLER, BOB SCHULTZ, JIM MINNETTE, JACK KOLLKER, JIM OCHS. SECOND ROW: ASSISTANT COACH MIKE ELLERT, JERRY ALSTADT, DON TEPOOL, JOHN MILLER, JERRY NIEMEIER, ROBERT GERST, RALPH SEIB, COACH LEN WILL.

Individual Scoring

Schoenbachler	169	Tepool	25
Miller	145	Kollker	25
Stratman	122	Minnette	22
Seib	109	Alstadt	7
Ochs	79	Schultz	2
Niemeier	37		

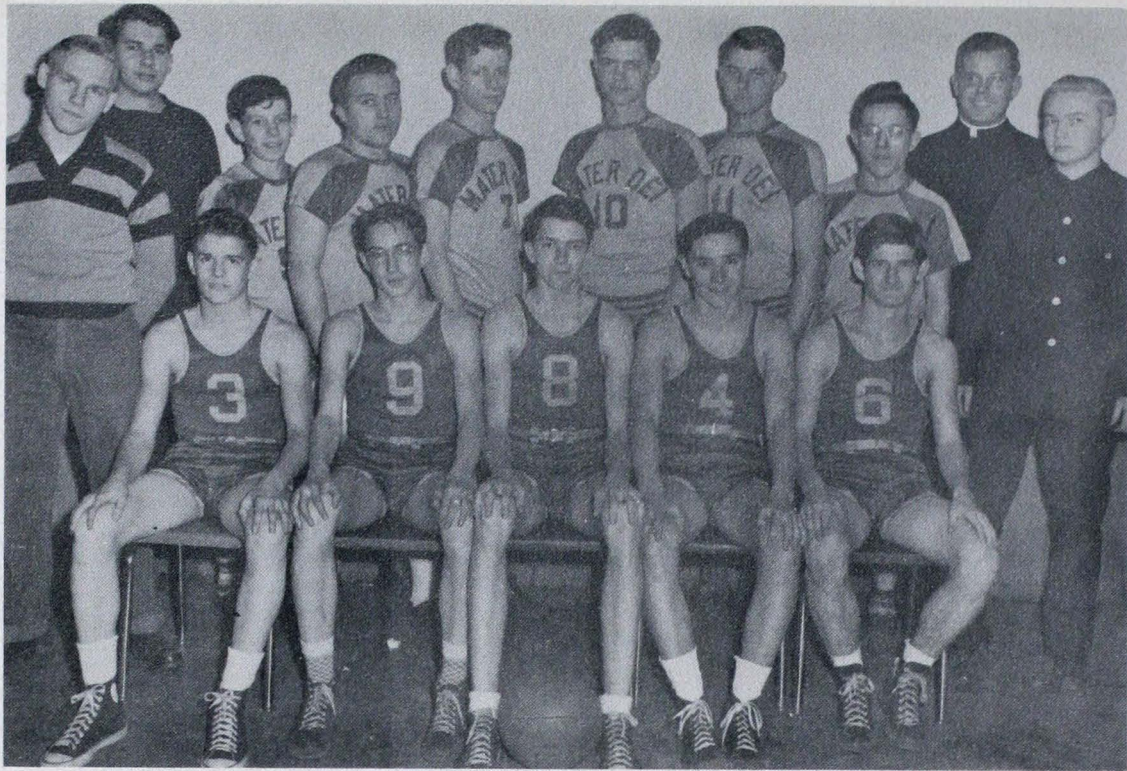
Mater Dei 32	New Harmony 36	Mater Dei 31	Indiana Deaf 20
Mater Dei 35	Chandler 42	Mater Dei 49	Owensboro 59
Mater Dei 39	Newburgh 26	Mater Dei 37	Washington 34
Mater Dei 26	Vinnennes 31	Mater Dei 36	Hammond Noll 41
Mater Dei 37	Mt. Vernon 49	Mater Dei 53	Hebbardsville 25
Mater Dei 29	Lincoln 42	Mater Dei 30	Silver Creek 43
Mater Dei 36	Princeton 59	Mater Dei 43	Rockport 42
Mater Dei 30	Holland 42	Mater Dei 45	Cannelton 67
Mater Dei 42	Henderson 41	Mater Dei 38	Vinnennes 36

HOLIDAY TOURNAMENT

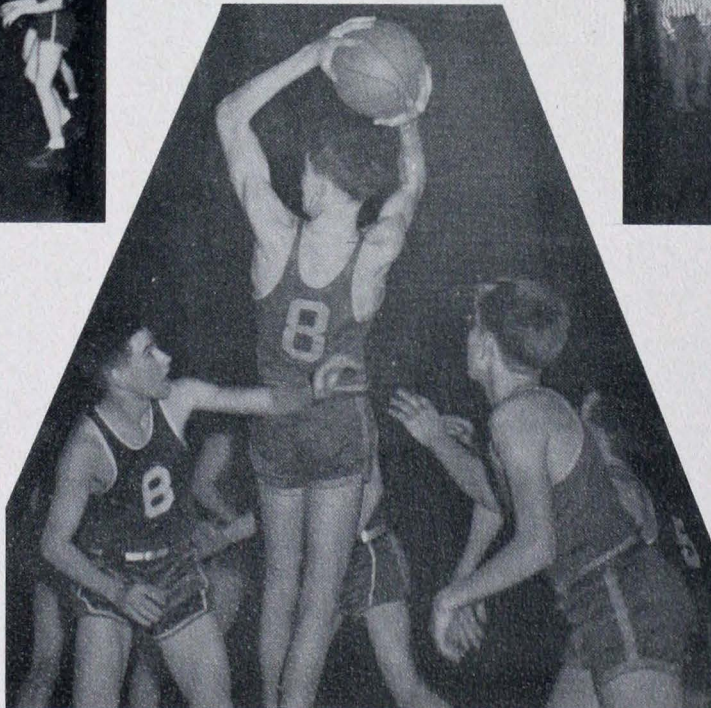
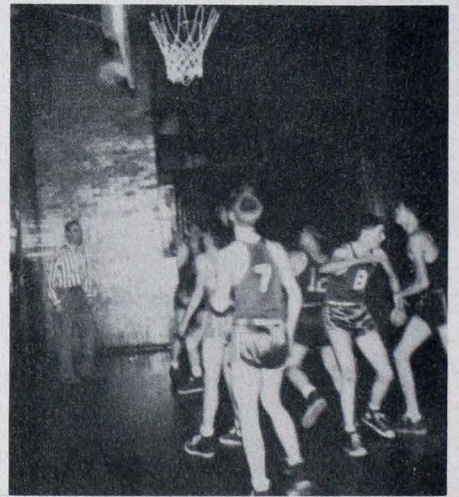
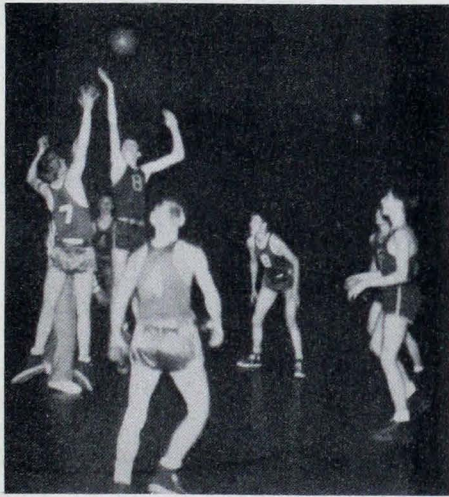
Mater Dei 37	Lynville 46
Mater Dei 40	Holland 48

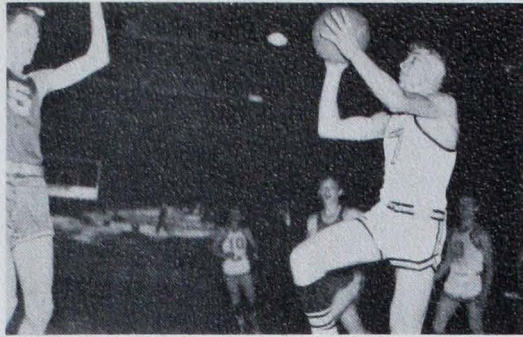
Sectional

Mater Dei 52	Poseyville 34
Mater Dei 40	Lincoln 51



BASKETBALL 1948 — '49





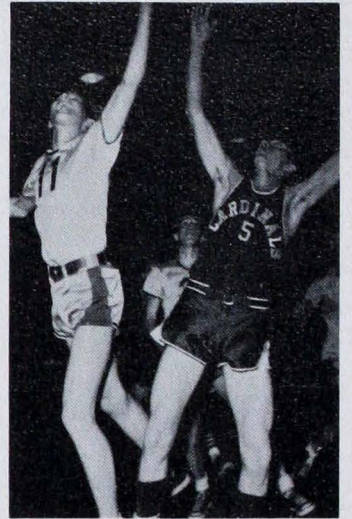
Oh no !!



Going up-



Just about in!



Where is it?

KIWANIS AWARD



Father receives plaque.



Isn't it a beauty!



Congratulations!



1ST ROW: DICKEY MOERS, JERRY MEEKS, NORMAN RAY, ED HERTEL, MARION WEIS, CHEERLEADERS. 2ND ROW: JIM STRATMAN, CLARENCE SCHOENBACHLER, BOB SCHULTZ, JIM MINNETTE, JACK KOLLKER, JIM OCHS. 3RD ROW: ASSISTANT COACH MIKE ELLERT, JERRY ALTSTADT, DON TEPOOL, JOHN MILLER, JERRY NEIMIER, BOB GERST, RALPH SEIB, COACH LEN WILL. 4TH ROW: STUDENT MANAGER GUS WIESINGER, FATHER SCHROEDER, STUDENT MANAGERS - CHARLES KERCHER, CHARLES MOUTOUX, BILLY KRUCHECK, STATICIAN, GUS PETERS. 5TH ROW: RICHARD KORESSSEL, KEN BITTNER, LOUIE WITTMER, VINCENT SILLS, LEO NURRENBERN, ALLEN SWAIN, JOHN DEIG, DAVE HOLLINGSWORTH, RESERVES. 6TH ROW: JIM SEIBERT, JOE HERTEL, JOE VESSELS, DARRYL GLASER, URBAN SEIBERT, EARL HOBBS, JAMES GERST, FRESHMEN. 7TH ROW: DAVID BUCKMAN, JOE DULIN, BOB BOW, RONALD REHRMAN, LOWELL GLASS, BILL SCOTT, FRESHMEN.

VARSITY BASKETBALL

On December 7, Mater Dei's first basketball team took the floor for their initial encounter on their brand new gym.

The early part of the season was rather disappointing, but as the season grew older, the team, guided by our able coaching staff and backed by a loyal rooting section, headed into the last half of the season and clawed out some victories.

ANNEX



B
O
W
L
I
N
G



C
H
A
M
P
S

BOOSTERS

READY AND WILLING
TO BOOST



OFFICERS 1949-50

HENRY PRESKESECT.
FRANK SPAHNTREAS.
CARL ZENTHOEFERPRES.
CLARENCE ALSTADTV. PRES.

OFFICERS 1950-51

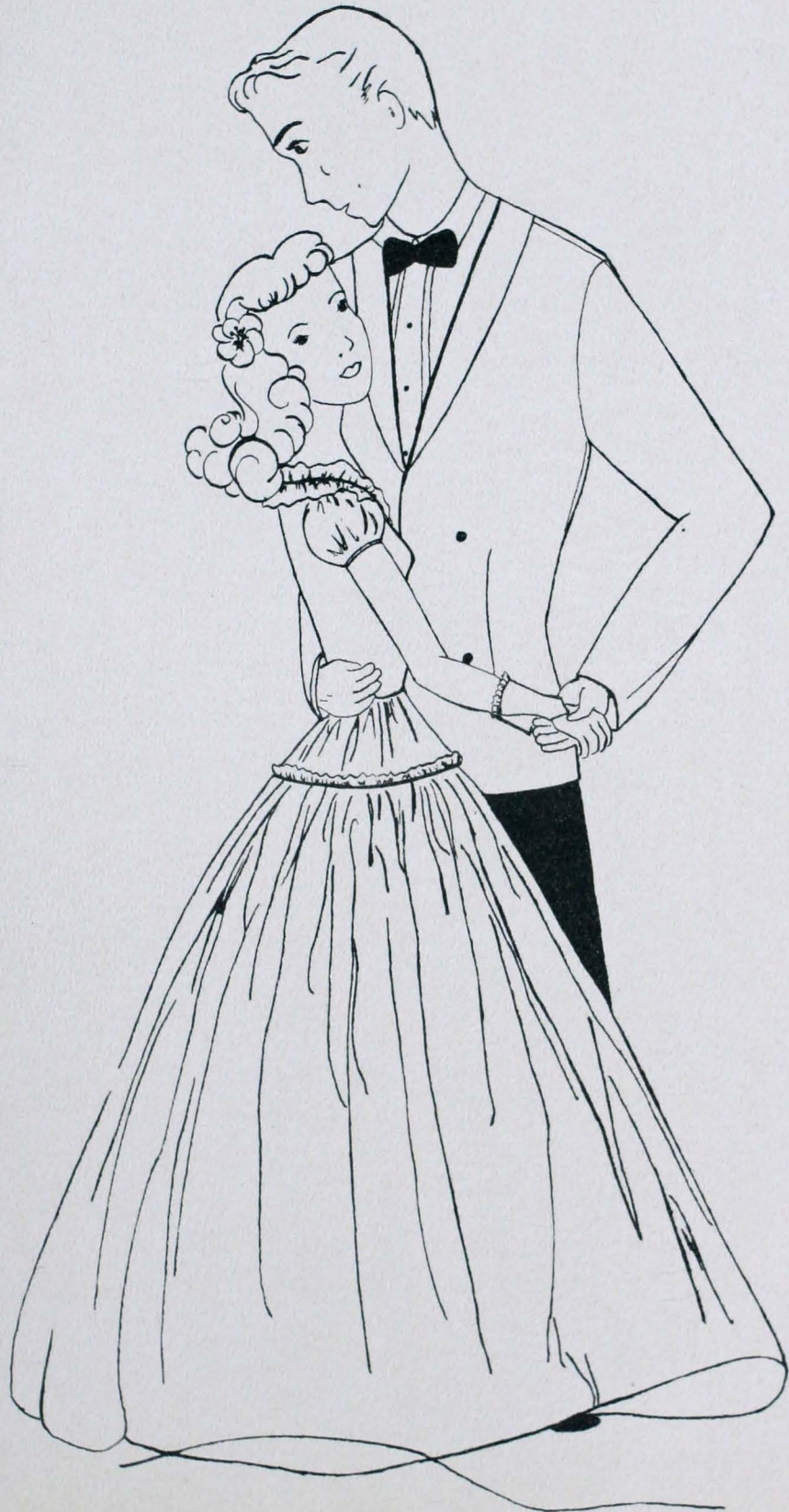
CLARENCE ALSTADTV. PRES.
BOB WILLTREAS.
DICK EMGEPRES.
MRS. JAMES SCHAFFERSECT.

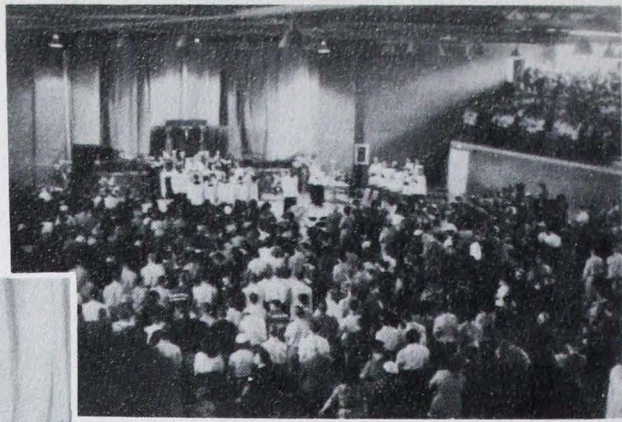
CHANGE OF THE GUARD
ZENTHOEFER TO EMGE

P. T. A.

MRS. ROY MARX, SECT.-TREAS.; LEO NURRENBERN.;PRES.; MRS. ROY BACKES, VICE PRES.







FOR
GOD



AND COUNTRY



MAY QUEEN



Our Heavenly
Queen



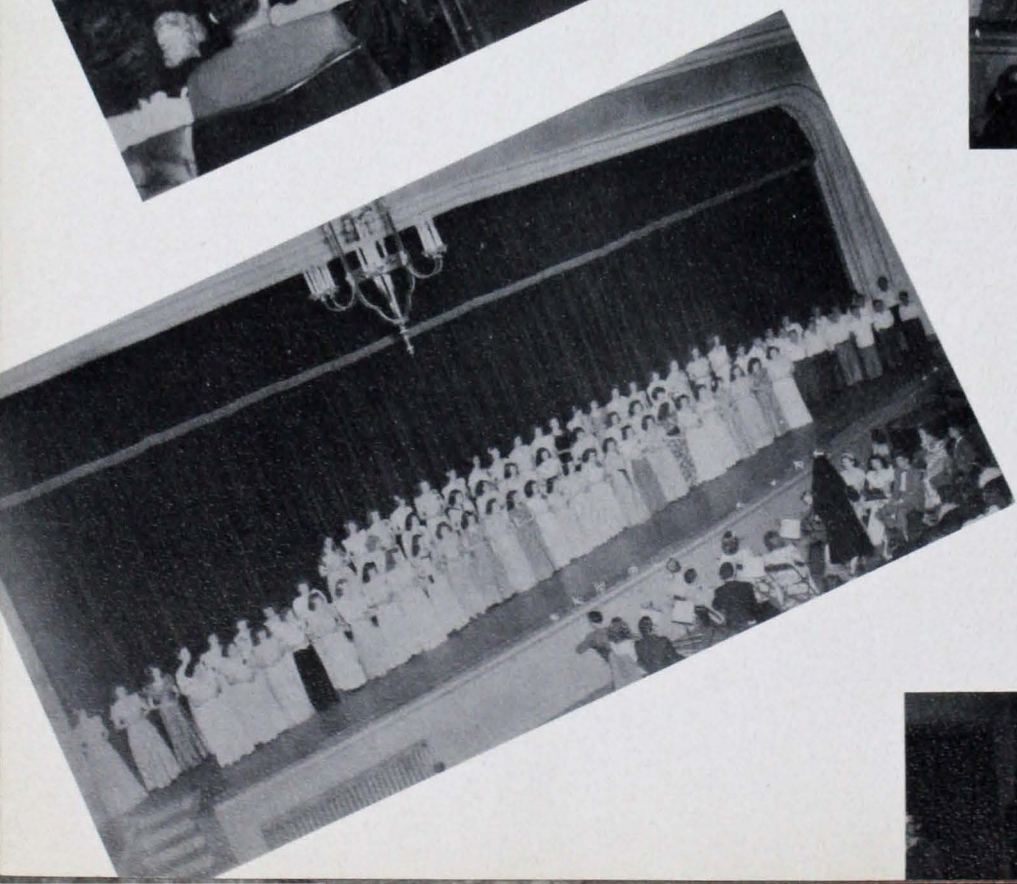
May Crowning

Breakfast for the Queen
and her court



Blossoms for the fair





MUSICAL
BEGINNINGS



ORCHESTRA



LEFT TO RIGHT, FIRST ROW: MADELYN NUNNING, FLORENCE SCHMITT, EILEEN BERENDES, ROSE MARY REISING, MARY STRANGE, MARY ORTH, RICHARD BASSEMIER, JIM SIEBERT, MARGIE ROLLETT. SECOND ROW: LARRY BALL, WALTER NEALE, JOHN ORTH, RONALD ANTEY, JOHN STEPHAN, JOYCE HAMEL, MARGARET NUNNING, TERESA NEALE, JOHN DEIG. THIRD ROW: DELORES SIMPSON, FATHER LAUTNER, JOE SCHENK, MARY JANE WOLFE, BOB SCHENK, SISTER KATHLEEN, URBAN SEIBERT, JIMMY HAGERMAN.

INSTRUMENTAL MUSIC

Instrumental Music offers the students two distinct opportunities: cultural pursuit and training in cooperation. Few things in the school so graphically demonstrate to participating students their interdependence as does ensemble music to members of the Orchestra. Mater Dei is proud of its young orchestra, even though it is poorly instrumented. Her young musicians come each day forty-five minutes before the opening of the regular class day; private practice, and patient tutoring have produced much with little. Assemblies, Home Basketball Games, and special P. T. A. Meetings have come to be considered incomplete without the Orchestra. The group has become distinguished especially for its rendition of "Alexander's Ragtime Band."

GLEE CLUB



LEFT TO RIGHT, KNEELING: MARTHA KNEER, BARBARA MOERS, PAT KONRAD, VIRGINIA MAYER, ANN THOLE, SEATED: EVELYN GLASER, MARY LEE MONTGOMERY, ROSEMARY WOODS, ESTHER GREWE, LETITIA SKEELS, PAULINE WANNEMUEHLER, MARY THOLE, BEVERLY MOHR, DORIS DEVILLEZ, SANDRA COTHERN, ROSALIE WANNEMUEHLER, BARBARA SCHAPKER, HELEN FOLZ. STANDING, 1ST ROW: BETTY STRANGE, DORIS REXING, EARLENE FOX, BETTY BERRY, JOYCE HAMEL, THERESA NEALE, GLORIA HENEISEN, DOROTHY BITTNER, MARY ANN SCHELLER, DANA GLASER, JEAN MOERS, BETTY SCHMITT, SUE RICHEY, LOIS FOLZ. STANDING, 2ND ROW: MARY LOU HUMPERT, CAROLYN SCALES, JANIE SMITH, JENNIE LOU ANSON, MARY JANE SCHELLER, MARY FEULNER, MARGIE SCHELLER, ROSE ANN MULLER, BARBARA GOEBEL, ALVINA VAAL, MARY MILES, SHIRLEY BUEHNER, MARY ORTH, JOAN MARTIN. STANDING, 3RD ROW: JIM MUESTERMAN, LAWRENCE PAUL, RONALD COLEMAN, BILL GRIESBACHER, DON HOEFLING, VIRGIL MAYER, RICHARD PRESKE, JIM HARDESTY, DON KRACK, JOHN PAYNE.

"He is not bad who loves to sing," is an old saying that has been found to contain much truth with the passing of the ages. Vocal music holds an important place at Mater Dei. Many of these pictured here have been members of a choral group at the school since the early days of the Annex; they have taken part in the "Annexcapades" of '47, the Spring Production of '48, and the "Concert" of '49.

The group here pictured sing simply for the love of singing, they are not members of the vocal music class.

Sister Clarice, O. S. B., inaugurated the musical program now thriving at Mater Dei; Sister Kathleen, O. S. B., is the present teacher; associated with Sister in Glee Club work is Father Vollmer.



Friendly! that's the way they look and that's the way they are. Their smiling faces greeted us on the first day of school and they have been that way every since.

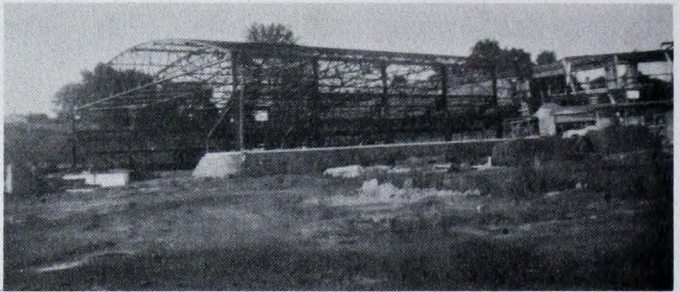
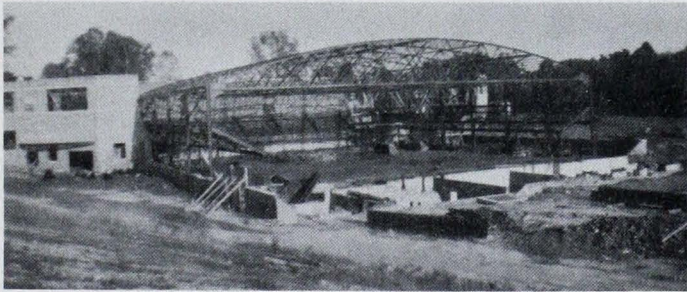
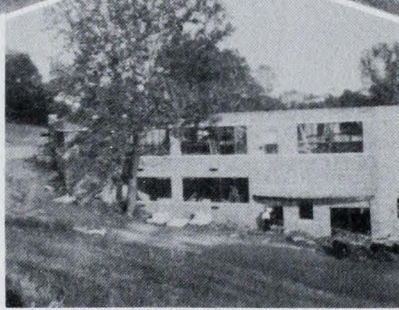
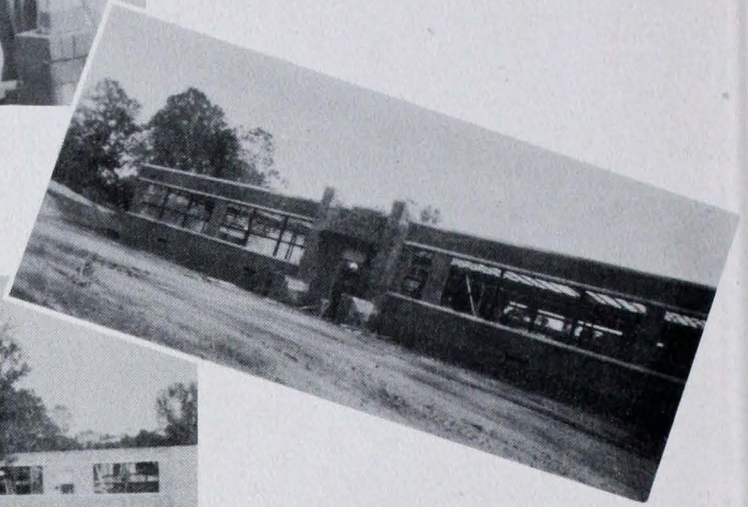
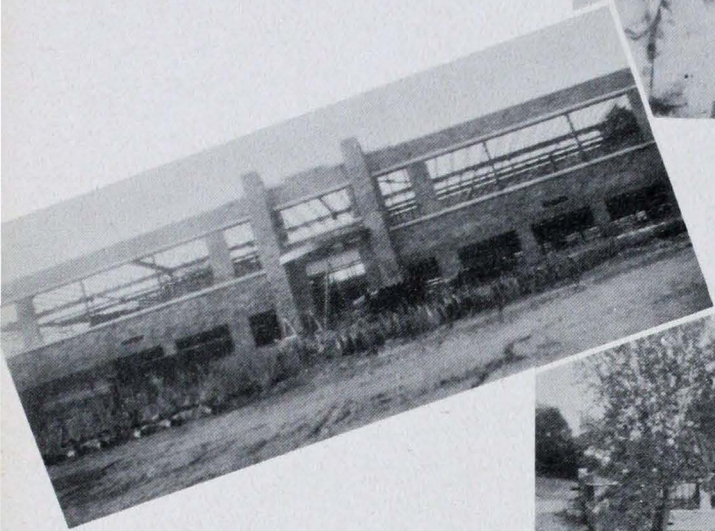
Our school has been blessed with one of the finest faculties in the city. Each one a real master in his field. They make their classes interesting along with teaching us something. This creates a harmonious atmosphere at Mater Dei.

None of them try to stand aloof from the students; they are willing to listen to our troubles and help us with them whenever possible.

MATER



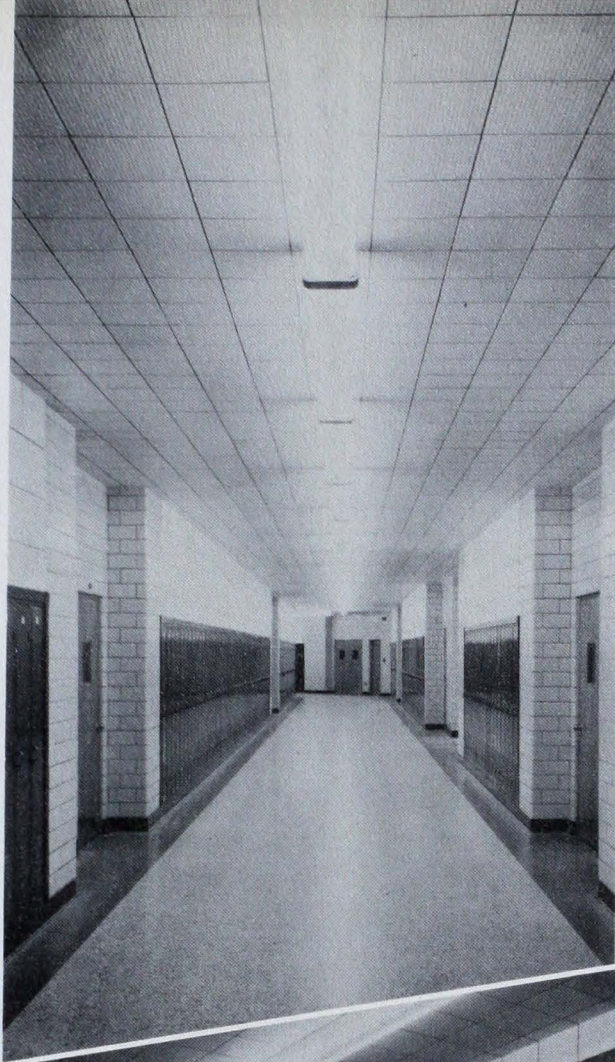
DEI



A SCHOOL GROWS IN EVANSVILLE



THE
Q
U
E
E
N
S



P
A
L
A
C
E



CALENDAR



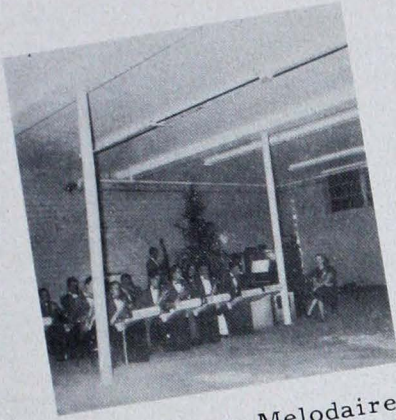
Good Cook



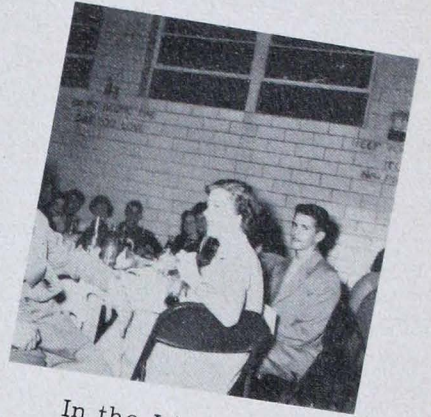
Looks Good!



DREAMER'S



Music from Melodaires

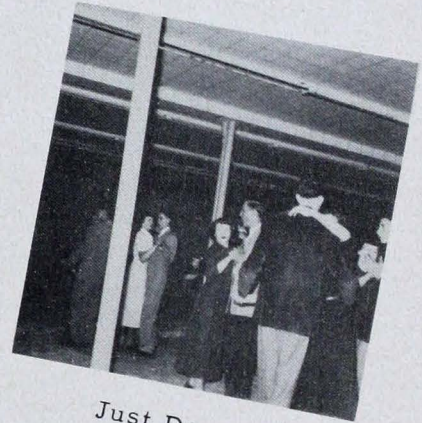


In the Lime Light

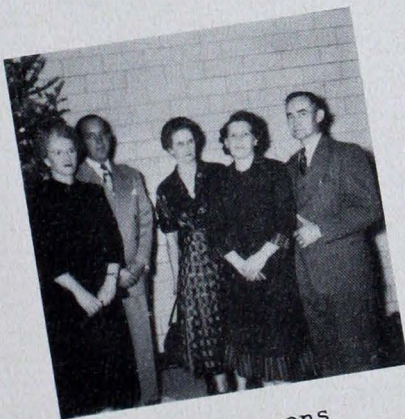
H O L I D A Y



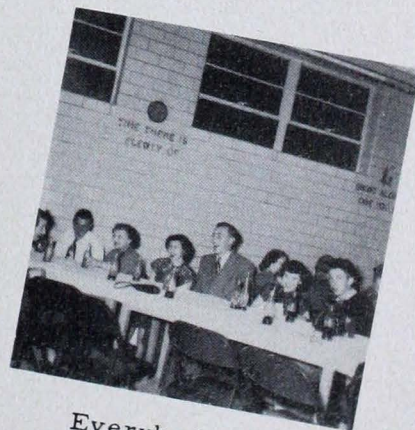
Friends



Just Dancing



Chaperons



Everybody Happy

SNAP SHOTS



1. Among the rubbish!
2. Squares and strips forever
3. Traitors??
4. Berrys on the bush
5. May they rest in peace
6. Legs!!
7. Hay, what's so funny?
8. Look behind you!
9. Posies!
10. High and low--
11. Puppy Love
12. Long arm John!
13. Bev's lucky number (13)
14. Hold-up!
15. Window shopping
16. Flying Home
17. Remember when. . .??
18. W O W !
19. Our boys!
20. I'll buy that dream!

SNAP SHOTS

1. Bring on the Men
2. You name it
3. 8th graders
4. Come up and see me sometime
5. Lonesome
6. Hay!
7. On your mark!
8. Madame Fifi
9. Pro.
10. Four of a kind
11. Heave Ho!
12. The ole swimming hole
13. Nature girls!
14. Carl's jacket
15. Where is the Groom??
16. Saints???
17. Which twin has the Toni??
18. Shh! Here she comes!
19. Maintenance Engineer
20. Posing
21. Sweater girls
22. Going My Way
23. No love in Return
24. Strike up the band
25. When I was young and slim
26. Sittin' pretty
27. Hold -Me
28. Sittin' and sippin'
29. Peepin' Pete
30. Killer at large!
31. Oh-o-o-o-o!
32. Great pals!
33. No leaning, Pleze!
34. Trees??
35. That's not nice!
36. Oh my!
37. Christ the King
38. Relaxing



SNAP SHOTS



1. Hugging and a chalkin'
2. Ain't love grand!
3. Friends
4. Faces???
5. Syl and friends
6. Going places
7. Cover girl
8. Heads
9. Noon hour
10. Let's all eat!
11. Something different
12. Two huskies
13. School days
14. Onward
15. String alongs
16. Principal--
17. What is it???
18. Lose something?
19. Studying??
20. Looking back
21. Hold on--!
22. Got a match?
23. Our old building--
Memorial Annex
24. That'll teach yu!!

SNAP SHOTS

1. Lady-in-waiting
2. What is it, Father?
3. So!
4. Wreck on the highway
5. Janitor?
6. Twins
7. Head men of Memorial and MD
8. Two to one
9. Lunch time
10. Brotherly love
11. Seniors
12. Baby It's Cold Outside
13. Pioneers
14. I'M petrified!
15. Billy Boy
16. Four of a kind
17. St. Louis Woman
18. She's loaded
19. All in a row!
20. Three Musketeers
21. Smile Pretty
22. Smiling Jake
23. Just like old times
24. Frilly Milly
25. Poor Carolyn!
26. Scared stiff!
27. Good when asleep--



SNAP SHOTS



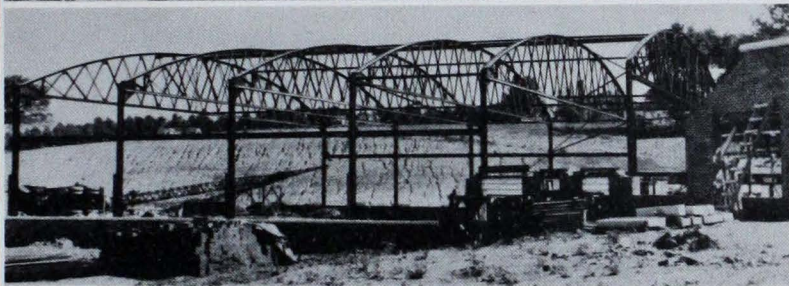
1. An on-looker
2. Row, row your boat!
3. Scrambel.
4. Going places
5. Hi, Nennie!
6. Susie-Mae
7. Bathing beauty??
8. May Day at the K.C.
9. Everyone wants to get into the act!
10. Pull, Willie!
11. Chemistry lab
12. Annie!
13. Sleepy??
14. Jitter's experiment!
15. Bashful!
16. All alone
17. Rodey!
18. All the monkeys aren't in the zoo!
19. Five snow balls!
20. Lennie and Flo
21. Mike and angles
22. Senior sec.
23. Sunny!
24. Jr. gals
25. Sun-water-sand-frowns-Ah! Boys!
26. Rev. Sil
27. Bushes and weeds!
28. In a huddle
29. Would'ca look!
30. Bottoms-up!
31. The Reverend Father
32. Janie is speaking!
33. Horns!
34. Glamor Boys

SNAP SHOTS



1. Lonesome
2. Youngen's
3. Is it love???
4. Janie's friends
5. Happy-go-lucky
6. A garden of roses!
7. Strong at it!
8. Roseanna, Roseanna!
9. "I baptise you---
10. What say?
11. Freshman
12. I wanna do home-work!
13. Play man, play!
14. Struttin!
15. Annex chicks
16. Coo'n
17. Push 'em in!
18. Annie get your hachet!
19. Who's the bag??
20. Mert!
21. Sweet Carolyn
22. Dimples and 'nanners!
23. Watch the birdie!
24. Turkey in the straw!
25. Long John and short beer!
26. Football sweaters!
27. Half there!
28. Pete Boy

STEEL Goes to School



◀ This is how part of Mater Dei High School looked during construction. Underneath its beautiful exterior is steel from International Steel — guaranteeing strength, durability, safety.

Yes, even steel goes to school, for it takes a lot of steel to construct beautiful, long-lasting buildings like the new Mater Dei High School.

International Steel Company, supplier of the steel for Evansville's newest high school, is pleased to be associated with the growth of this badly needed institution of learning.

Already Mater Dei has become an important part of Evansville's life. Its reputation has become well established in a very short time.

International Steel, too, has become a major phase of Evansville building and industry. Through its many years of operation, International Steel has built a

reputation of dependability . . . efficiency . . . fairness.

We are proud that Mater Dei was built with International steel. It marks another step in the progress of education today . . . of International Steel's part in that progress.

INTERNATIONAL Steel Co.



1821 EDGAR ST.
EVANSVILLE, IND.

ALSO MAKERS OF VAN KANNEL REVOLVING DOORS,
HANGARS, HANGAR DOORS, AND ORNAMENTAL STEEL

For Your Every Electrical Need

Call

SWANSON - NUNN ELECTRIC

8th & Oak

Phone 53321

Compliments

Of

NATIONAL FURNITURE MFG. CO.

1501 W. Keller St.

Evansville, Ind.

Manufacturers of Upholstered Living Room Furniture

Flowers
For All Occasions

Call 5-7274

ZEIDLER FLORAL CO.

2019 N. Fulton Ave.

Men's & Boys' Clothing

Shoes, Furnishings & Luggage
Your Complete Men's Store

SIEGEL'S

Fourth At Locust 2-0133

TRI-STATE PRINTING CO.

Commercial Printing - Publications
Engraving

18-20 Vine St. Phone 5-9201
Evansville, Ind.

H. HERMANN

Fine Candies Since 1860
Sodas - Sundaes - Sandwiches

123 Main St. Phone 3-1186

SOUTHERN CATHOLIC SUPPLY
COMPANY

428 South Fifth Street
Louisville, Ky.

"Serving the South"

Compliments Of

THE HELDT & VOELKER CO.

Garden & Field Seeds
Paints & Hardware
Sporting Goods

WEINZAPFEL & SONS

Tavern - Gen. Merchandise
Coal Trucking Service

Phone St. Philips Exchange
St. Philips, Indiana

Compliments Of

SMITH & BUTTERFIELD

305-307 Main Street
Evansville 2, Ind.

For Better Snapshots - Prompt Service
Let S & B do your photofinishing

WARWEG AND HAGEL

ARCHITECTS

306 Grein Bldg.

Evansville

Ind.

Congratulations To

Mater Dei High School

Schultze
LUMBER COMPANY INC.

When it is lumber & building materials you are needing,
It will pay you to

Call 5-6218

INDIAN

World's Finest Motorcycle
Sold, Serviced and Guaranteed

BY BUD BAYS' INDIAN SALES

1426 W. Franklin St.
Phone 38304

Congratulations And Best Wishes

HARDING'S 5¢ to \$1.00 STORE

2315-17 W. Franklin St.
Evansville, Ind.

Compliments

CLEM J. TEPOOL

Prescription Druggist
2023 W. Franklin St.
Evansville, Ind.
Phone 2-4566

Compliments Of

HILLSIDE FLOWERS

Flower & Gift Shop
2413 W. Franklin St.

FRANKLIN PASTRY SHOP

2325 W. Franklin St.

Ph. 4-1745

Compliments of

FRANKLIN SHOE CO.

Ed. Shellenberger
2323 West Franklin

Compliments of

CRAIG RADIO SERVICE

2531 W. Franklin St.

WEBER'S SERVICE STATION

2667 Mount Vernon Ave.

Gas, Oil, Washing
and Lubrication

TEKOPPEL BLOCK CO.

Manufacturers Of

Vibrated
Concrete
Blocks

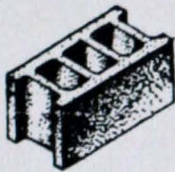
Plaster - Sewer Pipe
Cement - Lime

All types of Waterproofing Materials
for

Basements - Brick Walls
In colors or Colorless

Phone 2-2491
531 North St. Joseph Avenue

Over A Half Century Of Service



BEARD'S

It Pays To Play

Evansville's Sporting
Goods Headquarters

14 S. E. Fourth

Good Health
To All From Rexall

REITZ DRUG STORE

Phone 3-6432 2301 W. Franklin
 Evansville, Ind.

In Business For Your Health



For The Best In
Sewing Machines

*Repairs
*Parts
*Service
*Converting your old
Machine into an Electric



See

J. SCHAFFSTEIN & SONS

710 N. Main St. Near Col.

39 Years Of Continuous Service

Evansville, Ind. Ph. 23897

CONGRATULATIONS FOR YOUR FIRST YEAR BOOK

From

SWANS DOWN

THE FAMOUS NAME FOR HOME BAKING

Swans Down
Instant Cake Mix

Swans Down
Family Flour

Swans Down
Cake Flour

Swans Down
Devil's Food Mix



IGLEHEART BROTHERS DIVISION

General Foods Corporation

Established 1856

Congratulations
TRI-STATE FORD CO.
Evansville, Indiana
Riverside at Sycamore
1825 W. Franklin
Phone 4-8277

E. DETERMANN CO., INC.
104 Main St.
Complete Church Supplies

A
FRIEND

A. J. BRUNE COMPANY
Crosley Sales and Service
Since 1925
Radios - Refrigerators - Ranges
Washers - Automobiles
Duo-Therm Oil Heater Appliances
1922 W. Franklin Phone 4-7077

Better Paints for Home & Industry
RED SPOT PAINT & VARNISH CO.
110-14 Main Street
Evansville, Indiana

Compliments Of
LERNER'S DEPT. STORE
2303 W. Franklin St.
Evansville, Ind.
The popular Store on the West Side

MILLER'S MEN'S WEAR
2115 W. Franklin St.
Evansville 12, Ind.

Congratulations
To The Senior Class Of 1950
KISSEL PRINTERS
2015 W. Franklin St.
Phone 2-6784

Compliments Of

THE TOGGERY

18th South E. Fourth St.
"The" Store for Men

Compliments Of

BELLMAN JEWELRY & GIFT SHOP

2313 W. Franklin St.
Phone 2-4341

Good Luck
To
Class Of 1950

THOMAS P. TOON
City Clerk

Records - Sheet Music
Music Accessories - Pianos
Phonographs - Organs

SCHUTTLEER MUSIC SHOP

"The Music Center"

18 N. W. 6th St. Phone 2-6269

We Rent Band Instruments

Compliments Of

EVANSVILLE LUGGAGE SHOP

Leather Goods Of Distinction

FRANK J. SPAHN, AGENCY

General Insurance
Fire - Casualty
Auto - Bonds

425-26 Indiana Bank Bldg.
Phone 59063 Res. 29673
Evansville, Indiana

Best Wishes

From

THE JOAN SHOP
MAY SPECIALTY SHOP

Double Measure - Double Pleasure

Drink

DOUBLE COLA

Compliments Of

FRANKLIN DRUG STORE

NABORHOOD DRUGS INC.

Compliments Of

Unique Cleaners

2110 W. Franklin St.

Evansville, Indiana

WEST SIDE HARDWARE COMPANY

"The True Value Store"

West Franklin St. at 12th Ave.

Phone 2-2781 Evansville, Ind.

ELITER'S

1030 Harmony Way

Complete Fountain Service
Sandwiches

Medicines - Sundries
Jumbo Malts - Banana Splits

Phone 5-6707

Compliments Of

FASHIONETTE HAT & DRESS SHOP

"Fashion Center Of The West Side"

NUGENT ROOFING
& SUPPLY CO., INC.

Applicators of All Types of

Roofing and Siding

Dixon's
Variety Store

FOUNTAIN SERVICE

LUNCHES

1323 Harmony Way

S. L. STIEBEL CO.

Incorporated

Exclusive Distributors
Of

Seeburg Music Systems
And
Scientific Sound Distribution

12-16 N. W. Sixth St.

Evansville 8, Ind.

Fred O. Baker
Vice-Pres.

TELEPHONE 3-3050 - 710-714 N.W. SECOND STREET, EVANSVILLE 10, INDIANA.

Weber Equipment Company
INCORPORATED
RESTAURANT, TAVERN, STORE EQUIPMENT AND SUPPLIES

Telephone 58135

Mobile Ambulance Service

Ziemer Funeral Home

FIRST AVENUE AND DELAWARE STREET

Evansville, Indiana

Compliments
Of

ARKETEX CERAMIC CORPORATION

BRAZIL • INDIANA

"First with the Finest"
CERAMIC GLAZED STRUCTURAL TILE

3rd Floor Citizens Bank Bldg.

A Happy Pair



MILK

ICE CREAM

Compliments

NURRENBERN FURNITURE CO.

Household Furnishings

2109 W. Franklin Street

Phone 24478

Evenings by appointment

B-4-U-BUY - Give Us A Try

EVANSVILLE LUMBER CO.

1700 W. Franklin Street

Phone 34221

Evansville's "House-pital" For Run Down Houses

KARES

Contracting Paint Store

Phone 4-5653 1421 E. Division Street

Evansville, 14, Indiana

Complete Painting Service

Interior - Exterior

Paperhanging - Wall Washing - Floor Sanding

Full line of Glidden Paints We Deliver

Consult Us about Your Painting Problems - We Can Help You

Free Estimates

D. M. SANTAROSSA



L. TOFFOLO

SANTAROSSA MOSAIC & TILE CO.

CONTRACTORS

Tile Terrazzo Mosaic

PRECAST TERRAZZO

2707 ROOSEVELT AVENUE
INDIANAPOLIS 1, IND.

In Evansville It's The

HOTEL VENDOME

Here indeed the discriminating guest will find the epitome
of Modern Luxury Living.

The New TOWN ROOM
Luncheons - Dinners
Dancing Nightly

For Delicious Meals
The Popular Priced
Bourbon Dining Room

Compliments Of

Sater's
406 MAIN ST.

Compliments Of
Ed. Goebel
Vanderburg Treasurer

If it's Classie
If it's Casual
If it's Sports
If it's Smart

You will find it in
The Shop Around the Corner

Schanberg's

8 N. S. Third St.
For the Smarter High School Girl

Congratulations

From the Interstate
Folks

INTERSTATE LOAN
CORP.

2126 W. Franklin St.
Jerry Nurrenbern, Mgr.



Compliments

Of

WOLF HEATING & AIR CONDITIONING CO.

PLUMBING * HEATING * SHEET METAL

Grimes Sprinkler Equipment

511 Oak Street

Telephone 5-7188

Evansville 9, Indiana

Plumbing & Heating Contractors

Of

Mater Dei High School

Best Wishes From
STANLEY CLOTHING CO.

111-115 Main St.

Established 1888

ORWIC E. SEILER, AGENCY
Dependable Service For All Your
Insurance Needs

Deryl A. Blackburn

2314 W. Franklin St.

Phone 2-2544 Evansville, Ind.

Congratulations To The Class Of '50

SMITH CONSTRUCTION CO.

General Contractors

484 S. Governor

Evansville Ind.



CONGRATULATIONS

ALTHOFF - HOWARD ELECTRIC CO. INC.

ELECTRICAL CONTRACTORS

"Always The Choice Of Discriminating Buyers"

427 N. W. Fourth St.

Evansville, Indiana

Phone 5-8886

"CONGRATULATIONS"

MATER DEI

BOOSTER

CLUB

<p>ZUBER'S RADIO SERVICE</p> <p>Motorola Sales & Service Appliances & Records Phone 2-6406 1916 W. Franklin St. Evansville 12, Ind.</p>	<p>Compliments Of</p> <p>FISHER GROCERY CO.</p> <p>Ph. 2-1159 2128-30 W. Franklin St. Evansville, Indiana</p>
<p>BUCK'S PLACE</p> <p>2226 W. Franklin St.</p> <p>Compliments Of Mrs. Milton Buckman</p>	<p>S. J. LUDDEN</p> <p>BARBER SHOP</p> <p>2210 W. Franklin St.</p>
<p>Best Wishes</p> <p>Hoffman's</p> <p>CLOTHING CO.</p>	<p>A. & H. TRUCK LINES, INC.</p> <p>2125 W. Maryland Ph. 3-4448</p> <p>For overnight service to Memphis, Louisville, Paducah, Owensboro, Cincinnati, & Tell City</p>
<p>Better Brand Meats</p> <p>STAHL PACKING COMPANY, INC.</p> <p>326 N. W. 6th St. Evansville, Indiana</p>	<p>Compliments Of</p> <p>SYL'S TAVERN</p> <p>Syl Englert, Prop. 813 N. St. Joe Ave. Phone 2-0963</p>
<p>Compliments Of</p> <p>HALLERT'S</p>	<p>KASBOHM DRY CLEANERS</p> <p>Shoe Repair 2310 W. Franklin Street Phone 5-7992</p>
<p>HUMPERT'S TAVERN</p> <p>Grocery & Service Station</p> <p>Saint Philips, Indiana</p>	<p>FLOWERS BY TOLLIVER</p> <p>11 Main St.</p> <p>Ph. 5-2271</p>
<p>BERT & RUTH LEHR'S TAVERN</p> <p>Draught Beer - Wine Sandwiches Phone 3-0730 2659 Mt. Vernon Ave. Evansville 12, Indiana</p>	<p>Congratulations On Your First Year Book Ask for Lucky Jim Popcorn</p> <p>J. A. McCARTY SEED CO.</p> <p>Ph. 5-5131 Evansville, Ind.</p>
<p>"A FRIEND"</p>	<p>Compliments Of</p> <p>GOLFMORE DRIVE-INN</p> <p>1001 N. St. Joe Ave.</p>

Compliments

Of

MR. & MRS. E. H. RIFFERT
DALE & JERRY

Congratulations!

Class Of '50

MELODY INN RESTAURANT

Harmony Way & Maryland St.

Phone 3-0641

SARTORE BROS.

Bud 2-1018 Gene 4-1620

Spray & Brush Painting

Interior - Exterior
Decorating

2010 W. Penn Evansville 12, Ind.

A Home again!
With Inselbric's Siding
Carpeting - Painting
& General Repair Work

2616 W. Virginia
Ph. 59984
Free Estimates

ANTON J. SCHENK

THE ALPINE HOUSE



Noon Lunches Every day
Chicken Special on Saturday
Soups & Sandwiches

BOB SCHLOTTER'S CAFE

220 S. E. 4th St.
Phone 3-0002

Water Well Drilling
And Pumps
Call

JOSEPH B. GOEBEL

St. Philips Exchange
Rural Route 2 Mt. Vernon, Indiana

Best Wishes Class Of '50

Miller Oschman Implement Co.

2518 First Avenue

Bowl For
Health

Finest Lanes In The
Entire Tri-State

ROSE BOWL
LANES

116 N. W. First

Instruction Sessions Now Starting Up

Ph. 3-0893 For Details

LA FENDRICH

Now . . . with
AIR-VENT

**SMOKES
COOLER**



**DRAWS
FREER**

LOMAX & NICHOLSON

Sporting Goods

126 Locust Street

Ph.-5-9411 Evansville 8, Indiana

For Your Refreshment

Drink

COCA-COLA

In
Bottles

Compliments

Of

MATER DEI
CAFETERIA

Mrs. Gerst
Mrs. Leimgruber
Mrs. Tenbarge
Mrs. Will

Compliments Of

LENSING BROS., INC.

409-421 E. Illinois Street
Dealers in the Following Materials:

Angle Irons
Air Grates
Ash Dumps
Basements Sash
Building Paper
Bolts
Calcium Chloride
Cements
Cement Colors
Cess Pools
Coal Chutes
Clean Outs
Cornerbead
Corner Tie
Channel Irons
Caulking Guns
Caulking Compound
Dome Damers
Expansion Joint

Flue Lining
Fire Brick
Hi-Temp Cements
Hard Board
Insulation
Louvers
Lime
Metal Arches
Metal Lath
Metal Casing
Metal Door Frames
Mortar
Mortar Colors
Mortar Boxes
Masonry Paint
Nails
Plaster
Perlite
Partition Block

Plaster Bond
Plastic Fire Brick
Roofing
Rocklath
Reinforcing Rods
Reinforcing Mesh
Steel Columns
Sheetrock
Sewer Pipe
Steel Sliding Doors
Tie Wire
Vermiculite
Windows
Weatherboard Corners
Wall Ties
Wire Ties
Wheelbarrows
Wall Coping
Water Proofing

Telephone 2-1144

Evansville, Indiana

LEX COMPANY, INC.

Everything for Acetylene
& Electric Welding

All types Fire Extinguishers
Fence for Home - School - Industrial Plants

8th and Court Phone 5-7119



Considering
A Banquet?

Let
the
MATER DEI
BOOSTERS
serve you!

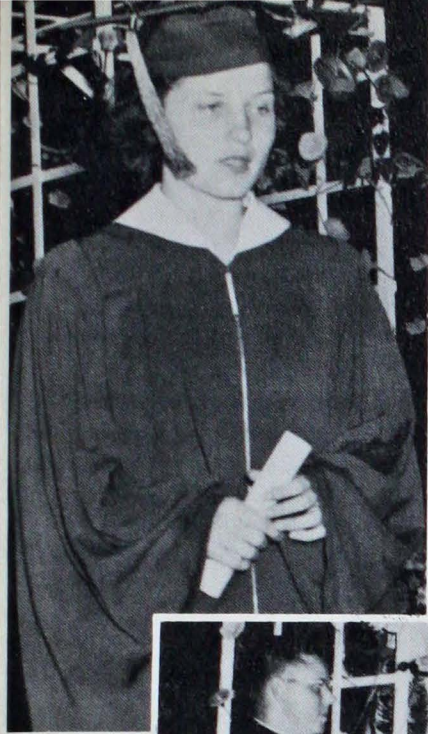
Good food * Excellent Service
Beautiful dining room

Thanks!

We wish to thank all those who cooperated with us in the preparation of this MATER DEI'S First Yearbook. We ask of you our readers to patronize the advertisers who have patronized us.

M-D Highlights Staff
Jerry Riffert, Editor
Dorothy Hertel, Associate Editor

AUTOGRAPHS



GOODBYE

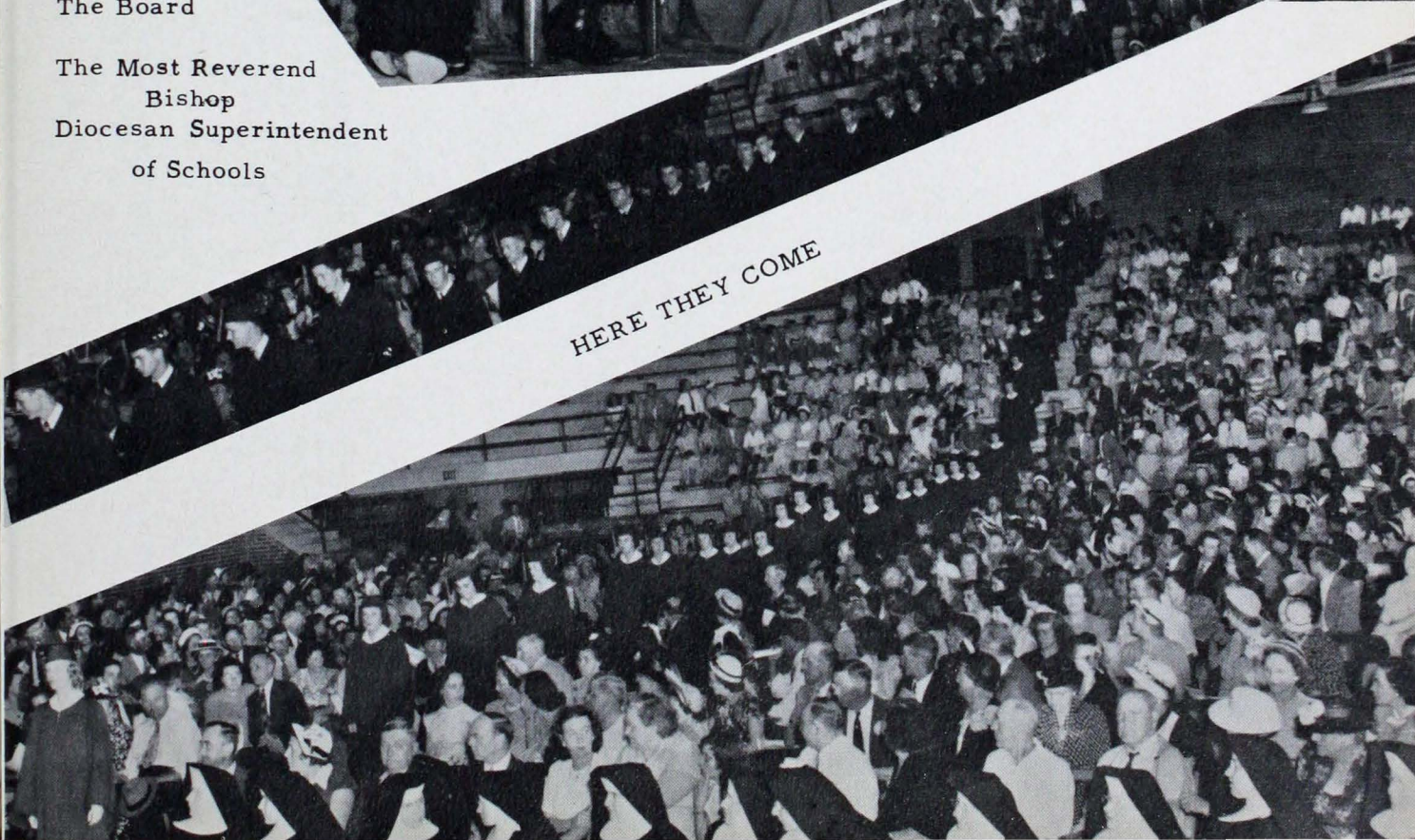
CONGRATULATIONS



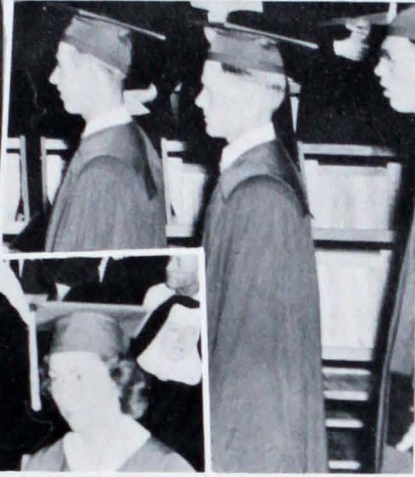
President
of
The Board

The Most Reverend
Bishop
Diocesan Superintendent
of Schools

HERE THEY COME







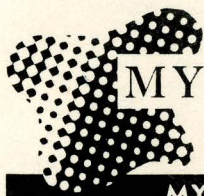


First in Religion

First in Scholarship

First in the hearts of her Alumni





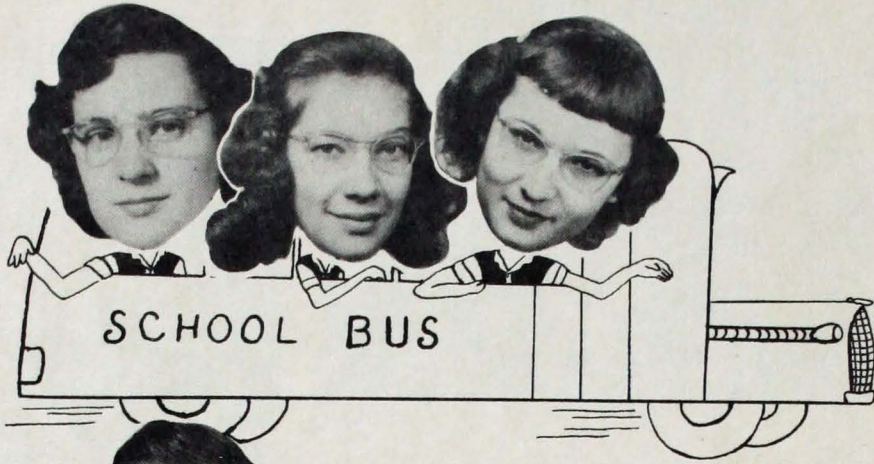
MYERS *deep-tone* YEARBOOKS

THE PACEMAKERS OF QUALITY

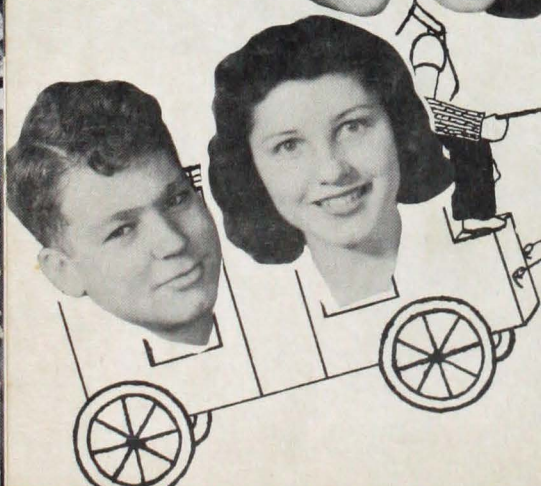
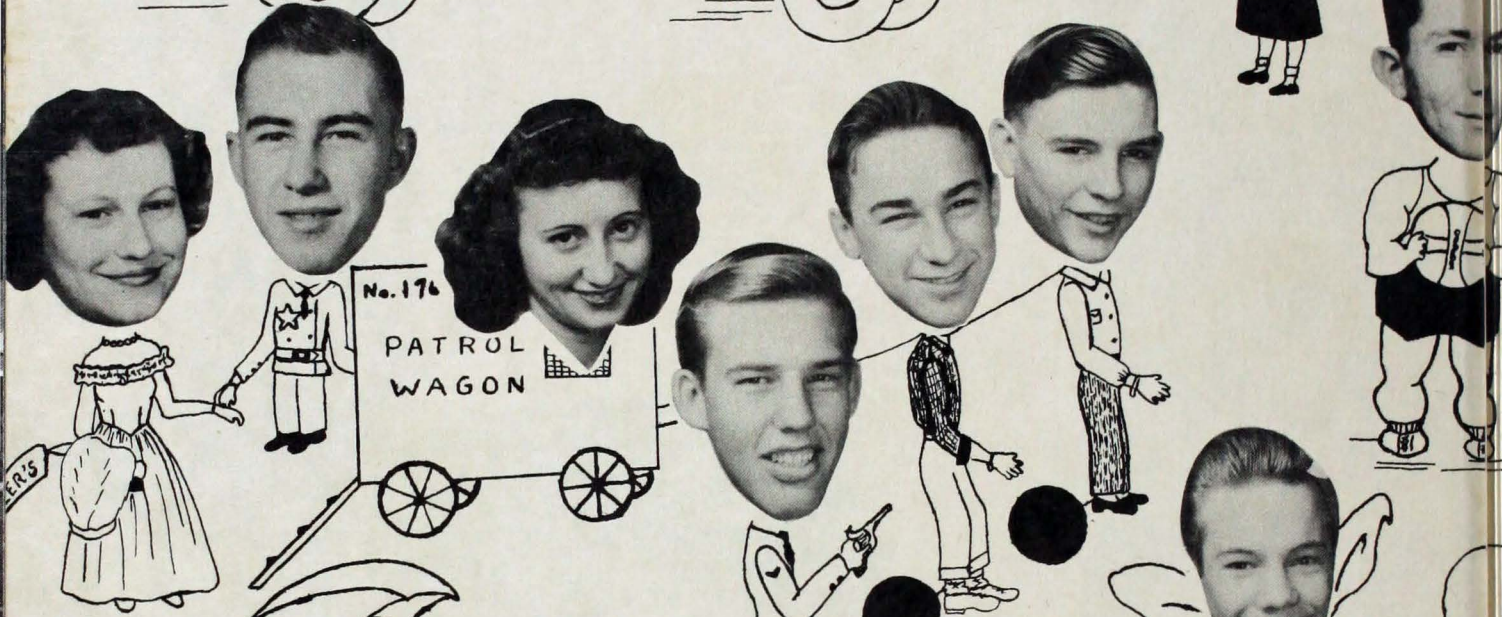
MYERS AND CO. INC.

TOPEKA, KANSAS

CRAZY



STOP!!



STREET

