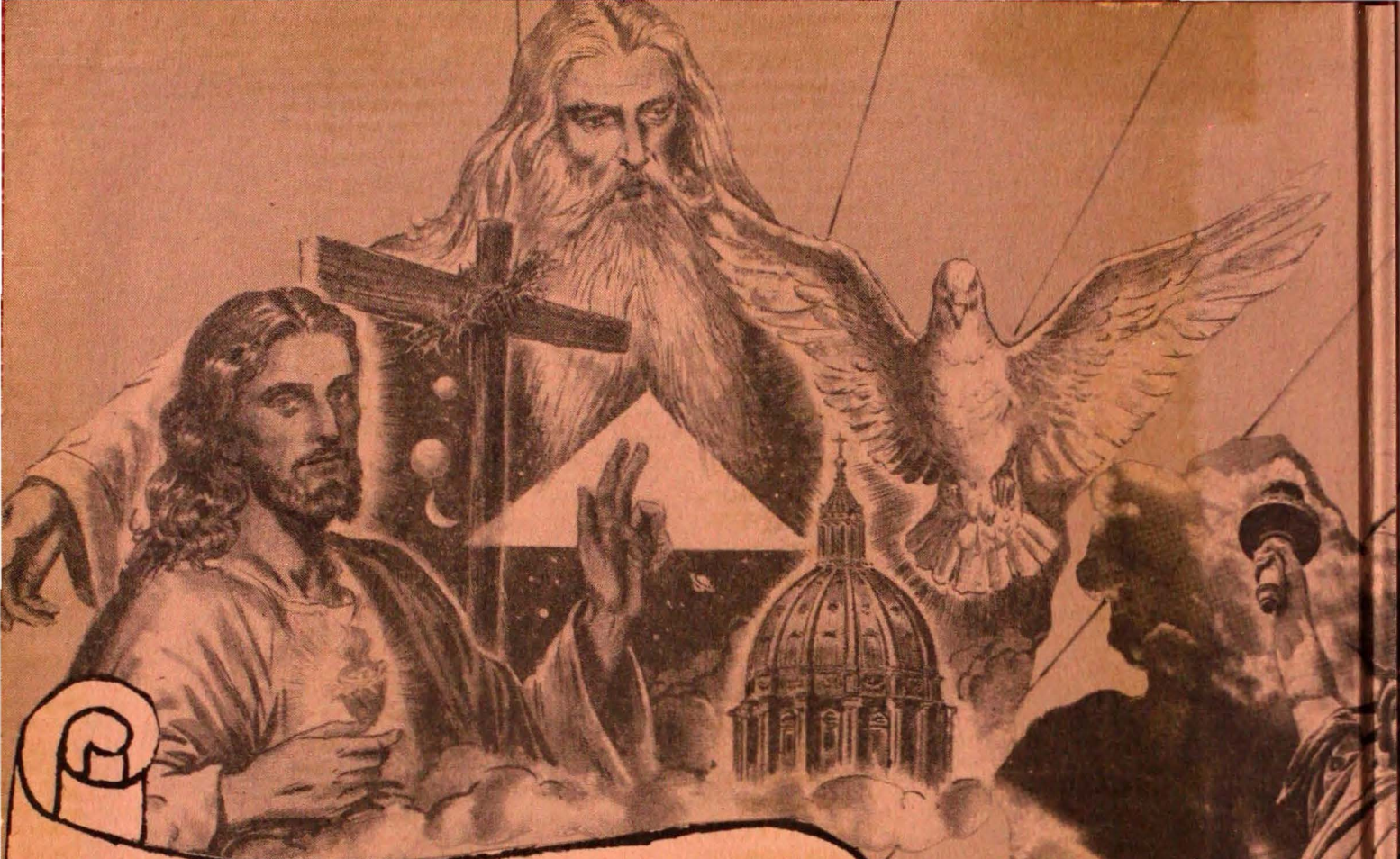




HI-LIGHTS

1953



For GOD

For COU



HILL
GHTS



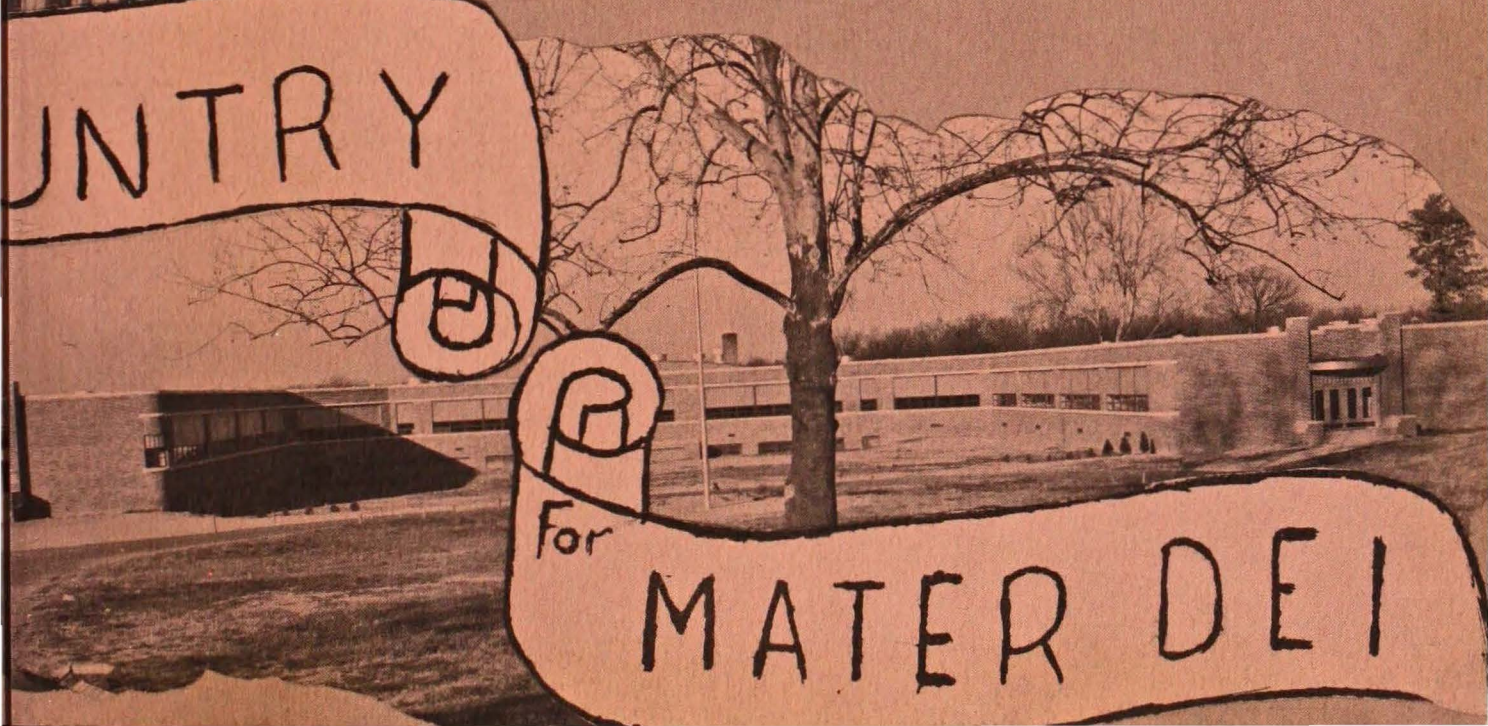
UNTRY

H

R

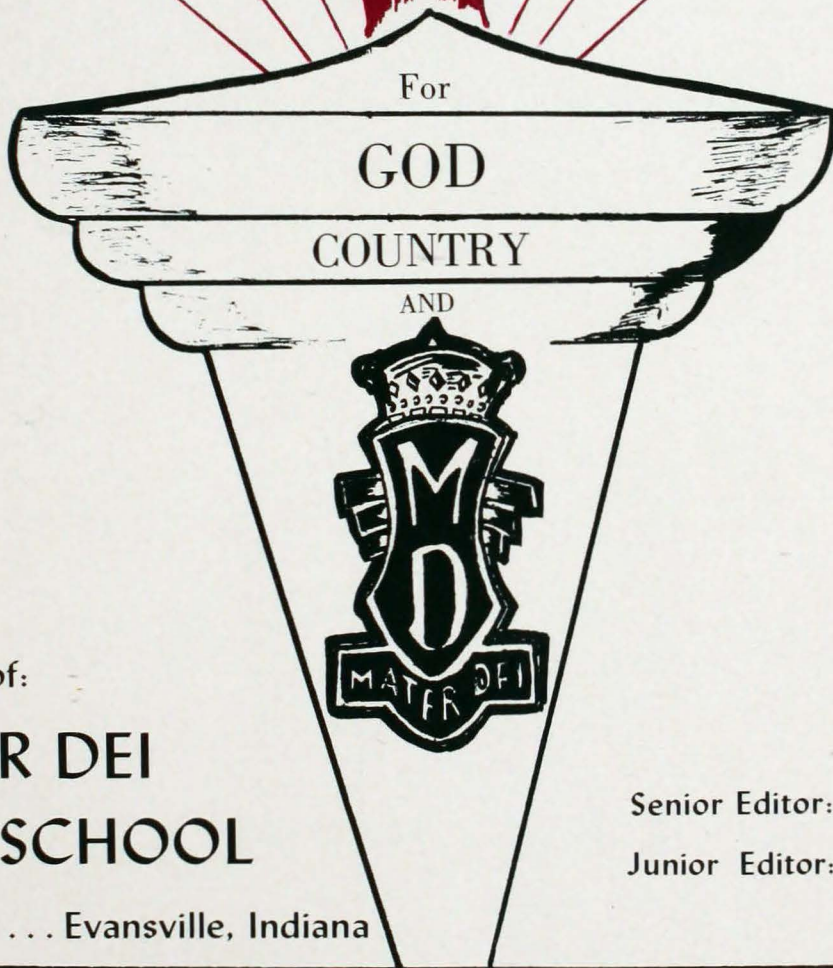
For

MATER DEI



M. R. LAHEE
1505 NEW GREEN RIVER RD.
EVANSVILLE, IND.

H I L L I G H T S



Yearbook of:

**MATER DEI
HIGH SCHOOL**

Harmony Way . . . Evansville, Indiana

Senior Editor: Bob Hagel,

Junior Editor: Carol Kollker

DEDICATION

Four years ago when Father Lautner opened the doors of Mater Dei for us freshmen, he wasn't swinging the glass doors of the present Mater Dei. But doors were only one of the many items still needed at that time. Father's persistent working and planning brought about the cooperation of the community so that as seniors we are enjoying the BEST. Father always told us that if Mater Dei was to be "just another school" it would not be worth the effort and sacrifice necessary for its building. He envisioned "The Queen's Palace", where in a family spirit, all work together "for God, for Country and for Mater Dei". No one person has devoted as much of his effort, time and self towards the accomplishment of this ideal as has Father Lautner. As a tribute of gratitude for the many blessings and benefits we have received through Mater Dei, we dedicate this our 1953 Yearbook to our greatest benefactor at Mater Dei, our Superintendent,

FATHER LAUTNER



The Most Reverend Henry J. Grimmelman, S.T.D., Bishop of Evansville; who with the thousands of loyal clergy and laity of Evansville has made Mater Dei a reality.



The Gentlemen of the

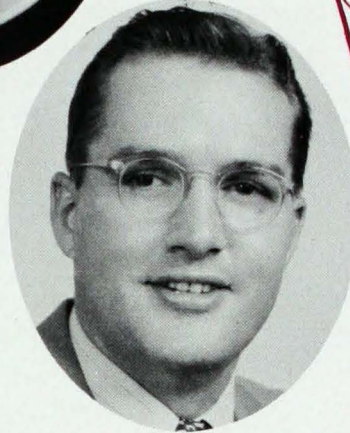
Rev. Richard Hoffman
Religion



Rev. Walden W. Schiffer
Religion



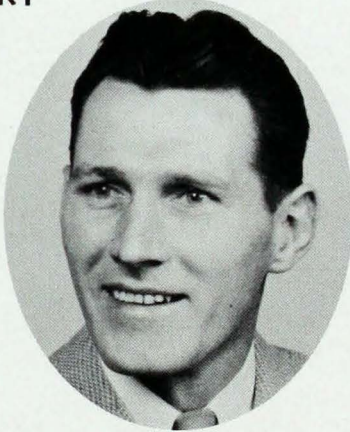
for
GOD



Mr. Ralph Joest
Agriculture
Chemistry

for
COUNTRY

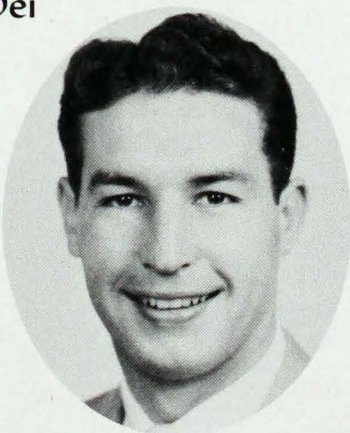
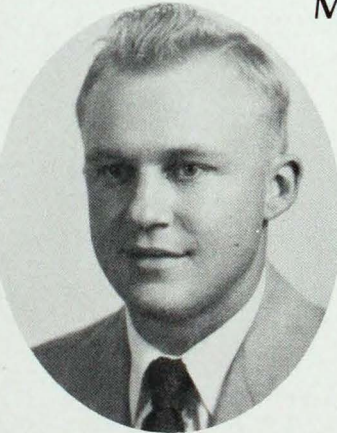
Mr. Paul Ellert
Biology
Physical Science
Physics



Mr. Len Will
Coach
Physical Ed.
Gen. Science

for
Mater Dei

Mr. Robert Hormuth
Band, Orchestra



Mr. Gene Logel
Assistant Coach
Physical Ed.
U. S. History

F
A
C
U
L
T
Y

F
A
C
U
L
T
Y

Sister Marietta
Biology, Math, Religion



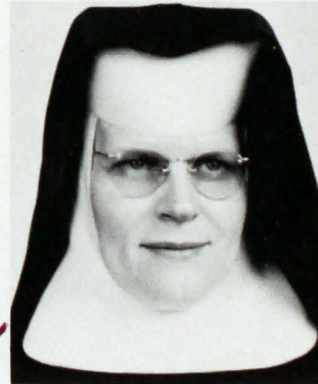
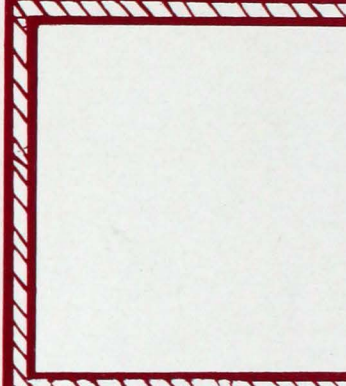
Sister Mary Lambert
Mathematics, English



Mrs. R. P. Patry
English, Gym



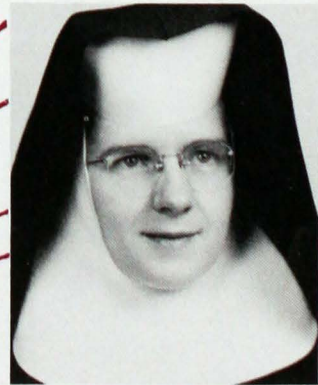
Sister Damian
Home Making, Religion,
Consumer Econ.



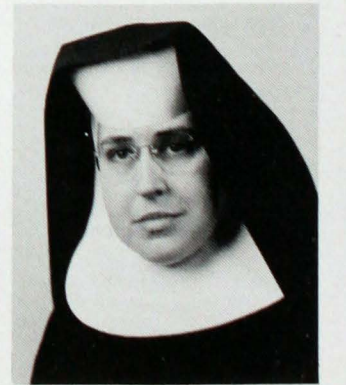
Sister Mary Angela
Journalism, Speech, Li-
brary, English



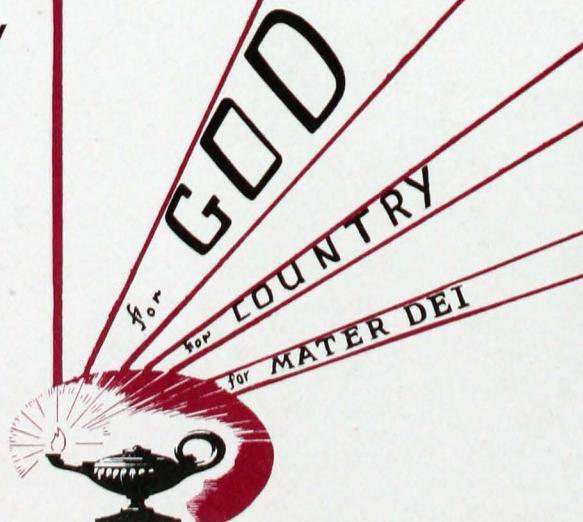
Sister Mary Clare
English, Algebra, Reli-
gion



Sister Benedicta
Home Making, Speech,
Religion.



Sister Mary Esther
English, Religion

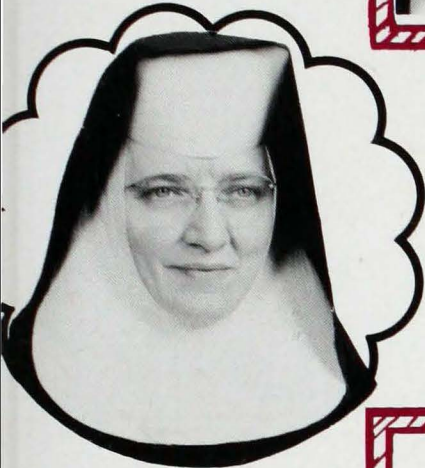




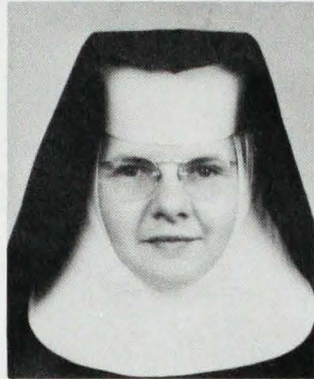
Sister Claudia
Art, Mechanical Drawing



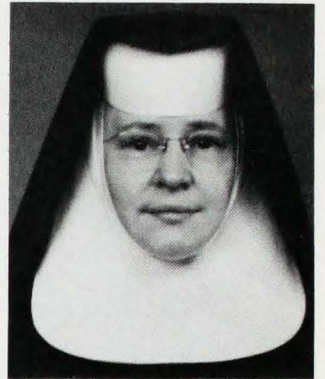
Sister Aquina
World History, World
Geography, Algebra



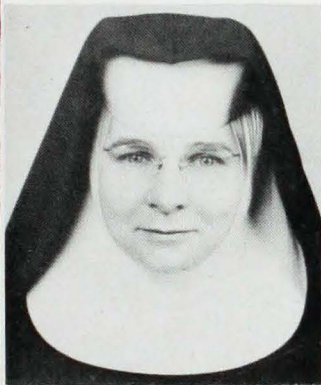
Sister Irmingard
Principal, Citizenship



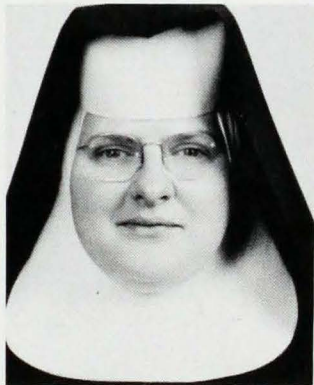
Sister Mary Regis
Typing, Shorthand, Book-
keeping, Journalism



Sister Mary Charles
Math, Literature



Sister Kathleen
Band, Glee Club, Music



Sister Mary Victor
Spanish, Latin



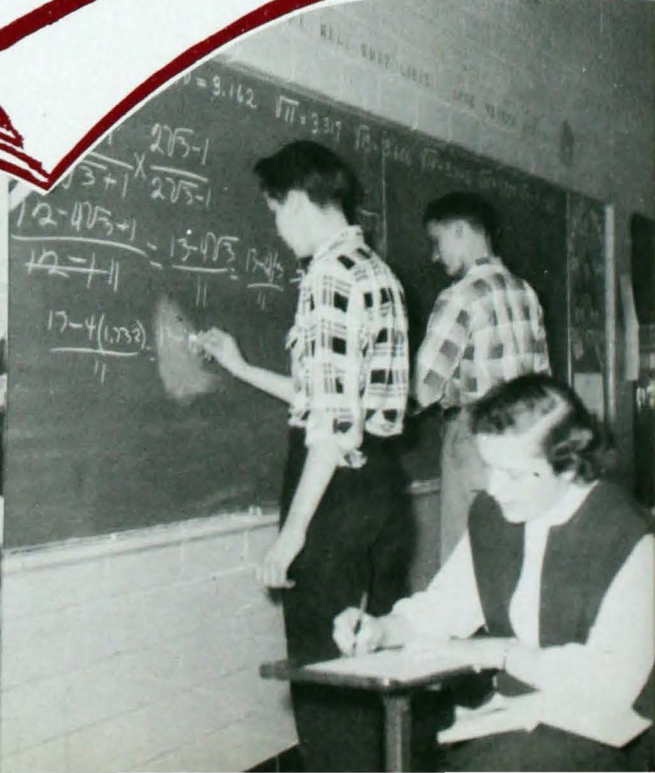
Sister Mary Elise
Typing, Bookkeeping



Sister Generose
Health, English, Religion



Sister Mary Judith
Typing, Shorthand, Book-
keeping





Seniors

Richard Bassemier, President; Betty Kercher, Vice President (behind flag); Roger Lehr, Treasurer; Madelyn Nunning, Secretary. One of the duties faithfully performed by the Senior officers is the daily raising of the flag.





Blonnie Adams; R.R. 7 Box 401; (Parish) St. Joseph; Choral Club 4; Drama 3; Glee Club 1,2,3,4; Prom 3; Musicals 1,2,3,4.



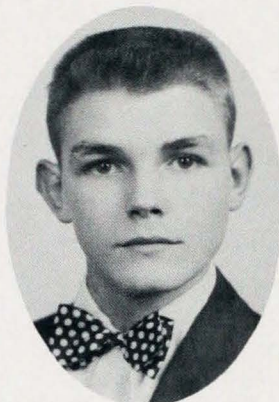
Leonard Angermeier; R.R. 4; Ph. 37769; (Parish) St. Joseph; Agriculture Club 3,4.



Jane Antey; 1526 W. Florida; Ph. 22918; (Parish) St. Boniface; Choral Club 4; Glee Club 2,3,4; Musicals 2; Paper 1; G.A.A. 1.



William Ball; 2325 W. Ohio; Ph. 29600; (Parish) St. Boniface; College Club 4; Drama 3; Glee Club 2,3; Honor Roll 1,2,3; Band 1,2,3,4; Musicals 1,2,3,4.



Vic Barnett; R.R. 12 Darmstadt Rd; Ph. 36764; (Parish) St. Anthony; Prom 3.



Jerry Barron; 2515 W. Indiana; Ph. 33208; (Parish) Sacred Heart; Drama 3; Glee Club 1,2,3; Prom 3; Musicals 2,3,4; Band 2,3,4; Cheerleaders 2; Band Treas. 3.



Richard Bassemier; 725 Georgette; Ph. 29668; (Parish) Sacred Heart; Drama 3; Glee Club 1,2,3,4; Band 1,2,3,4; Musicals 1,2,3,4; Honor Roll 1; Prom 3; Football 1; Soph. Vice-pres. Senior Pres; Band Pres. 3; Drum Major 3,4.



Monna J. Barron; 514 N. 10th Ave.; Ph. 47448; (Parish) St. Boniface; Choral Club 4; Glee Club 4; Musicals 1,2,3,4; G.A.A. 1; Soph. Treas.



Mary F. Barron; 2128 W. Columbia; Ph. 57643; (Parish) St. Boniface; Glee Club 2,3; Prom 3; Musicals 2,3; Paper 4.

We know
we can
never repay



Robert Behme; 1022 N. Ful-
ton; Ph. 34273; (Parish) St.
Anthony; Honor Roll 2,3;
Drama 3; Red and Gold Rat-
ing 3.



Wilfred Baumgart; R.R. 9; Ph.
20480; (Parish) Sacred Heart;
Agriculture Club 3,4; Athle-
tic Club 3,4; Red and Gold
Rating 2,3; Football 2,3,4.



Bertha Bauer; 2420 W. Frank-
lin; Ph. 29170; (Parish) Sac-
red Heart; Honor Roll 3; Prom
3; Red and Gold Rating 3.

all we

owe to our

Mater Dei



Carole Brown; 501 Vanness
Ave.; Ph. 47839; (Parish)
Sacred Heart; Glee Club 1;
Prom 3; Musicals 1; School
Paper 1; G.A.A. 1.



Pat Brenner; R.R. 1; Ph. Marrs
914; (Parish) St. Matthews;
Drama 3; Glee Club 1,2;
Prom 3; Musicals 1,2; G.A.A.
1,2,3,4.



Bob Bow; 2200 W. Virginia;
Ph. 49562; (Parish) St. Boni-
face; Glee Club 1; Athletic
Club 3,4; Basketball 1,2,3,4;
Football 1,2,3,4.



Dorothy Burns; 313 Schroeder
Ave.; Ph. 25641; (Parish)
Sacred Heart.



David Buckman; 2226 W.
Delaware; Ph. 36504; (Parish)
St. Boniface; Athletic Club
4; Basketball 1; Football 1,2,
3,4; Baseball 1,2,3,4; Wrest-
ling 2.



Joyce Browning; R. R. 2
Chandler; Ph. 67991; (Parish)
St. Joseph; Choral Club 4;
Pep Club 4; Musicals 4.



Anna Castleman; 1918 W. Delaware; Ph. 31482; (Parish) St. Boniface; Pep Club 4; Choral Club 4; Glee Club 1, 2, 3, 4; Musicals 1, 2, 3, 4; Honor Roll 1, 2, 4; Prom 3; G.A.A. 1, 2; Red and Gold Rating 2.



Paul Cheaney; 725 Joan Ave.; Ph. 58938; (Parish) St. Theresa; Glee Club 1, 2; Athletic Club 4; Prom 3; Basketball 2, 3, 4; Baseball 1, 2, 3, 4.



Bonnie Clark; 401 E. Franklin; Ph. 34319; (Parish) St. Joseph; Drama 3; Glee Club 1, 2, 3; Paper 4; Musicals 1, 2, 3; Prom 3.

As
Freshies
we
always
seemed
to lose our
books;



Shirley Claspell; 847 W. Idlewild; Ph. 32589; (Parish) Holy Redeemer; Choral Club 4; Drama 3; Glee Club 1, 2, 4; Pep Club 4; Prom 3; Musicals 2, 4; G.A.A. 1, 2, 3, 4.



Jerry Craig; 2117 W. Franklin; Ph. 22621; (Parish) St. Boniface.



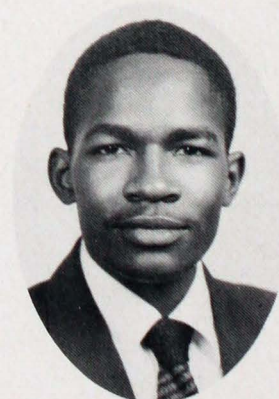
Sharon Crowe; 1336 N. 3rd Ave.; Ph. 37245; (Parish) St. Anthony; Glee Club 1.



Shirley Dossett; 2224 W. Illinois; Ph. 56671; (Parish) St. Boniface; Honor Roll 1, 2, 3; Musicals 3; Choral Club 4; Glee Club 1.



Robert Crone; 2915 Mt. Vernon Ave.; Ph. 35507; (Parish) Sacred Heart; Football 1, 2, 3, 4; Wrestling 2, 3, 4.



Joe Dulin; 1818 N. 3rd Ave.; Ph. 45367; (Parish) St. John; Basketball 1, 2, 3, 4.



Pat Ferguson; 2504 N. Kentucky; Ph. 41945; (Parish) Assumption.



Rita Folz; R.R. 4; Ph. 42038; (Parish) St. Joseph; Drama 3; Prom 3; Honor Roll 1,2,3; Red and Gold Rating 3.



Gerry Eberhard; 304 E. Parkland; Ph. 29586; (Parish) St. Theresa; Athletic Club 4; Prom 3; Basketball 2,3,4; Baseball 3,4.

'Bet the teachers thought we were Snooks!!!



Edna Folz; R.R. 1; Ph. Caborn 214; (Parish) St. Phillip's; Drama 3; Honor 1,2,3; G.A. A. 4.



Alice Folz; 3418 W. Maryland; Ph. 43801; (Parish) Sacred Heart; Drama 3; Glee Club 2; Musicals 2; Honor 1, 2; Paper 4; G.A.A. 1.



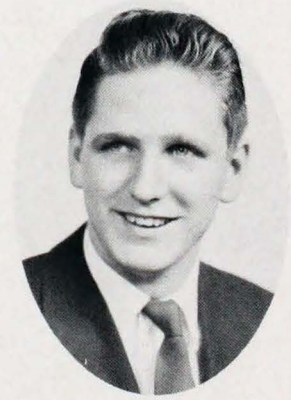
Ray Flittner; R.R. 5; Ph. 35669; (Parish) St. James; Agriculture Club 4; Prom 3; Agriculture Club Vice-pres. 4.



Barbara Garrison; 308 N. 3rd Ave.; Ph. 34195; (Parish) St. Anthony; Drama 3; Glee Club 2,3; Musicals 2; Paper 4; Prom 3.



Mary Frick; R.R. 7; Ph. Armstrong 517; (Parish) St. Wendel; Drama 3; Glee Club 1; Prom 3; Musicals 1; Honor Roll 1,2,3; Red and Gold Rating 2,3.



Richard Emge; 2101 W. Indiana; Ph. 23138; (Parish) Sacred Heart; College Club 4; Choral Club 4; Drama 3,4; Band 2,3,4; Cheerleaders 4; Prom 3; Musicals 1,2,3,4; Honor Roll 2,3; Football 1; Student Manager 2,3; College Club V.-pres.



Jim Gerst; 820 Harriett; Ph. 38338; (Parish) St. Anthony; College Club 4; Science Club 3; Choral 4; Drama 3; Glee Club 1,2,3; Athletic Club 3; Musicals 1,2,3; Prom 3.



Joe Gerteisen; R.R. 4; (Parish) St. Joseph; Prom 3; Agriculture Club 4.



Jerry Gies; 1010 N. 4th Ave.; Ph. 44246; (Parish) St. Anthony; Drama 3; Glee Club 1,2.



Darryl Glaser; 921 W. Maryland; Ph. 32266; (Parish) St. Anthony; Glee Club 2; Cheerleaders 2; Baseball 4; Basketball 1.



Jim Glaser; 921 W. Maryland; Ph. 32266; (Parish) St. Anthony; Prom 3; Glee Club 2; Basketball 3; Baseball 4.



Lowell Glass; 1717 B. 3rd. Ave.; Ph. 52517; (Parish) St. John; Honor Roll 1,2,3; College Club 4; Drama 3; Basketball 1,2,3,4.

When Sophs
our class
was silly as
any other;



Herbert Gorman; 615 N. Garfield; Ph. 41898; (Parish) St. Anthony; Prom 3.



Val Grewe; 307 N.W. 7th; Ph. 49933; (Parish) Assumption; Honor Roll 1,2,3.



Clarence Grimwood;



Rosemary Hall; R.R. 7; Ph. 36805; (Parish) St. Boniface; Drama 3; College Club 4; Paper 4; Prom 3; Honor Roll 1,2,3; G.A.A. 1,2.



Jacqueline Hall; 620 N. Main; Ph. 42365; (Parish) St. Joseph.



Bob Hagel; 4617 Stringtown; Ph. 31659; (Parish) Assumption; Pep Club 4; College Club 4; Choral Club 4; Drama 3,4; Honor 1,2,3; Prom 3; Musicals 3,4; Yearbook 3,4; Cheerleaders 4; Football 1,2; College Club Pres. 4; Choral Pres. 4.

Could we
make the
noise,
Oh Brother!



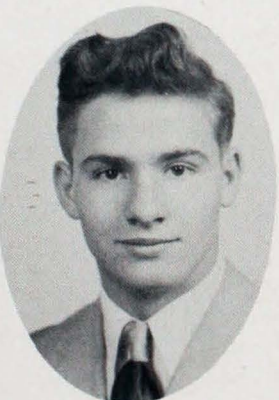
Jean Hartman; R.R. 4; Ph. 36931; (Parish) Sacred Heart.



Herman Hartweck; R.R. 4; Ph. 35951; (Parish) St. Joseph; College Club 4; Choral Club 4.



Gloria Hart; 3015 Claremont; Ph. 51890; (Parish) St. Boniface; Drama 3.



Earl Hobbs; 1404 Oakley; Ph. 38477; (Parish) St. Anthony; Football 1,2,3.



Joe Hertel; 310 N. 3rd Ave.; Ph. 42568; (Parish) Assumption; Basketball 1, 2, 3, 4; Football 3; Stu. Manager 1,2; Soph. Pres.; School Mayor.



Barbara Helfrich; 1412 Mesker Pk. Dr.; Ph. 57828; (Parish) Sacred Heart; Drama 4; College Club 4; Pep Club 4; Paper 4; Prom 3; Musicals 2, 3,4; G.A.A. 1,2,3.



Bob Hornbrook; 3715 Broadway; Ph. 28762; (Parish) St. Agnes.



Jerry Horstketter; 5809 Stringtown; Ph. 47840; (Parish) Sacred Heart; Athletic Club 1,2; Basketball 1,2,3,4; Baseball 1,2; Football 1,2,3,4; Wrestling 1.



Virlee Jochum; 409 W. Iowa; (Parish) St. Anthony; Pep Club 4; Choral Club 4; Drama 3,4; Prom 3; Honor Roll 1,2,3,4; Musicals 1,2,3,4.



Carol Kanowsky; 200 N. Marine; Ph. 55816; (Parish) Sacred Heart; Pep Club 4; Paper 3,4; Musicals 1,2,3; Prom 3; G.A.A. 1,2,3.



Jerry Kelle; R.R. 4; Ph. 51045; (Parish) St. Joseph; Agriculture Club 4; Agriculture Club Pres. 4.



Carolyn Knapp; 912 W. Michigan; Ph. 53630; (Parish) St. Anthony; Choral Club 4; Musicals 1,2,3; Prom 3; G.A.A. 1.



Betty Kercher; 501 N. 11th Ave.; Ph. 27658; (Parish) St. Boniface; Choral Club 4; Pep Club 4; Yearbook 4; Prom 3; Musicals 1,2,3,4; G.A.A. 1,2,3,4; G.A.A. Pres. 4; City Clerk 4; Senior Vice-pres.



Cecilia Kissel; R.R. 7; Ph. Inglefield; (Parish) St. James; Honor Roll 2,3,4; Prom 3.



Agnes Kissell; 2227 W. Indiana; Ph. 57548; (Parish) St. Boniface; Pep Club 4; Drama 3; Paper 3,4; Musicals 1,2,3; Prom 3; G.A.A. 1,2,4; Senior Editor of Paper.

As Juniors
we grew up
quite a bit.



Frances Kormelink; R.R. 9; Ph. 39707; (Parish) Sacred Heart; Pep Club 4; Choral Club 4; Band 2,3,4; Musicals 2,3,4; Football 1.



Carolyn Kolb; 1175 E. Virginia; Ph. 57892; (Parish) St. Joseph; Glee Club 1,2,3; Paper 3,4; Musicals 1,2,3; Prom 3; G.A.A. 1,2.



Mary J. Koch; 1128 W. Columbia; Ph. 56493; (Parish) St. Anthony; Drama 3,4; Honor Roll 1,2,3,4.

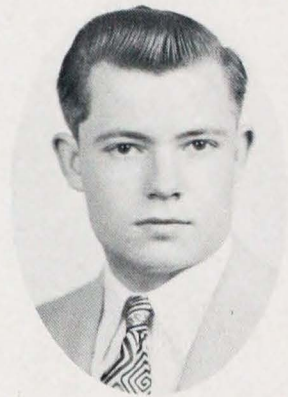
Those football
and
basketball
letters
of red
and gold;



Donald Kuhr; 910 Harriett; Ph. 21957; (Parish) St. Anthony.



Bill Kruchek; 1111 1st Ave.; Ph. 56703; (Parish) St. Anthony; Choral Club 4; Musicals 4; Football 1,2,3,4; Athletic Club 4.



Jim Kramer; 1006 N. 3rd Ave.; Ph. 30366; (Parish) St. Anthony; Band 2,3; Musicals 2,3.



Gloria Martin; 2410 W. Virginia; Ph. 58011; (Parish) St. Boniface; Musicals 1; Prom 3; Honor Roll 1,2,3,4; Freshman Vice-pres.



Dolores Martin; Upper Red Bank; Ph. 37047; (Parish) Sacred Heart; College Club 4; Drama 3; Musicals 1; Prom 3; G.A.A. 1; Junior Treas.



Roger Lehr; 2659 Mt. Vernon Ave.; Ph. 44430; (Parish) Sacred Heart; Drama 3,4; Yearbook 1,2,3,4; Paper 1,2,3; Musicals 2; Prom 3; Football 3; Senior Treasurer; Drama Pres. 3.



Ruth Matz; R.R. 12; Ph. 47507; (Parish) Sacred Heart; Drama 3; Glee Club 3; Paper 4; Musicals 3; Prom 3; Honor Roll 2,3.



Rita Mayer; 512 N. St. Joe Ave.; Ph. 39368; (Parish) St. Boniface; Drama 3; Glee Club 1,2,3,4; Pep Club 4; Paper 3,4; Musicals 1,2; Prom 3; G.A.A. 1,2,3,4.



Monica Moers; 616 W. Columbia; Ph. 26618; (Parish) St. Anthony; Glee Club 1,2,3; Musicals 1,2; Prom 3; G.A.A. 1,2.



Mary J. Mosby; 1614 Helfrich Ave.; Ph. 35586; (Parish) St. Agnes; Choral Club 4; Glee Club 1,2,3; Musicals 1,2,3,4; G.A.A. 1.



Charles Moutoux; 24 W. Louisiana; Ph. 25301; (Parish) St. Joseph.



Tom Mullen; 2701 Mt. Vernon Ave.; Ph. 3486; (Parish) Sacred Heart; College Club 4; Honor Roll 1; Football 3.

Which adorn
the chests of
our
classmates,
so brave
and bold



Verna Mueth 3158 N. Bedford; Ph. 55315; (Parish) St. Theresa; Choral 4; Glee Club 1,2,3; Band 2,3; Musicals 1,2,3,4; Honor Roll 1,2,3,4; G.A.A. 1; Band Sec. 3.



Edward Muller; 2526 W. Illinois; Ph. 42651; (Parish) Sacred Heart; Honor Roll 1,2,3.



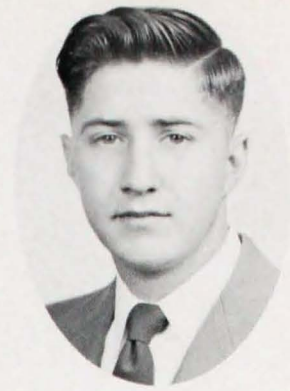
Sylvia Niemeier; 619 N. St. Joe; Ph. 37518; (Parish) St. Boniface Honor Roll 1,2,3; Prom 3; Drama 3,4.



Richard Nunning; 1712 Hollywood; Ph. 58020; (Parish) St. Agnes.



Verna Paul; 718 Hess; Ph. 58794; (Parish) St. Boniface; Glee Club 1,2; Drama 3; Paper 3,4; Musicals 1,2; Prom 3; G.A.A. 1,2.



Don Noelke; 601 N. St. Joe; Ph. 45444; (Parish) St. Boniface; Paper 3.

Oh! That
wonderful
tie with
Bosse in
Football
'51



John Orth; 1019 Grave; Ph. 40732; (Parish) St. Boniface; Drama 3; Glee Club 1; Band 1,2,3,4; Musicals 1,2,3.



Carolyn Orman; R.R. 13; (Parish) Sacred Heart; Honor Roll 3; Prom 3; Paper 3,4.



Betty Offerman; R.R. 1; Ph. Armstrong 506; (Parish) St. Wendel; Drama 3,4; Glee Club 1; Paper 4; Musicals 1; Honor Roll 1,2,3,4.



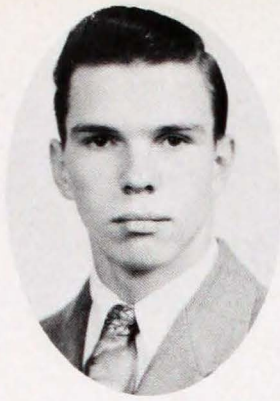
Jerry Preske; 1416 Harmony Way; Ph. 56838; (Parish) St. Boniface; Prom 3; Agriculture Club 4; Athletic 4; Football 1,4; Wrestling 1,4.



Dixie Pike; R.R. 1; Ph. 41209; (Parish) St. Agnes; Glee Club 1; College Club 4; Musicals 1; Prom 3; G.A.A. 1,2.



Madelyn Nunning; R.R. 13; Ph. 43930; (Parish) St. Boniface; Drama 3; College Club 4; Yearbook 4; Paper 3,4; Musicals 1,2,3; Prom 3; Honor Roll 1,2,3; Band 2,3,4; Orchestra 1,2,4; G.A.A. 1,4; Senior Sec.; Band Treas. 4; Drama Sec. 3.



Jim Purcell; 626 Market; (Parish) Holy Trinity; Glee Club 2,3; Musicals 2.



Ron Rehrman; 321 W. Columbia; Ph. 59550; (Parish) St. Anthony; Glee Club 1; Musicals 1; Basketball 1,2,3; Football 1,2,3; Freshman Treas.



Irene Rummage; R.R. 12; Ph. 37097; (Parish) St. Anthony.



Mary J. Scales; 1922 W. Michigan; Ph. 24498; (Parish) St. Boniface; Choral Club 3,4; Drama 3; Glee Club 2,3,4; Musicals 2,3,4; Prom 3; G.A.A. 1,2.



Rita Rexing; R.R. 5; Ph. Haubstadt 34F21; (Parish) St. James; Choral Club 4; Glee Club 3; Drama 3; Pep Club 4; Musicals 3,4; Prom 3; G.A.A. 1.



Elgene Rexing; Haubstadt; Ph. Inglefield; (Parish) St. James; Drama 3,4; Choral 4; College Club 4; Paper 4; Prom 3; Honor Roll 1,2,3,4.

But in '52

We Won

We Won

We Won



Jerry Reine; 2511 W. Virginia; Ph. 32819; (Parish) St. Boniface; Drama 3; College Club 4; Yearbook 4; Musicals 1,2,3,4; Prom 3; Honor Roll 3; Band 1,2,3,4; Band Vice-pres. 3; College Club Treas. 4.



Bonnie Ritter; 724 N. Bell; Ph. 38260; (Parish) Sacred Heart; Choral Club 4; Drama 3; Glee Club 1,2,3; Pep Club 4; Yearbook 4; Paper 3,4; Musicals 1,2,3,4; Prom 3; G.A.A. 1,2,3,4.



Jim Schenk; 2601 W. Franklin; Ph. 36471; (Parish) Sacred Heart; Athletic Club 3,4; Yearbook 4; Football 3,4; Wrestling 2,3.

ORS



Rose Schoenbachler; 703 N. St. Joe; Ph. 48741; (Parish) Sacred Heart; Choral 3,4; Glee Club 1,2,3,4; Pep Club 4; Yearbook 4; Prom 3; Musicals 1,2,3,4; G.A.A. 1,2,3,4.



Urban Seibert; R.R. 9; Ph. 37708; (Parish) St. Boniface; Band 1; Athletic Club 4; Musicals 1; Wrestling 2,3,4; Baseball 2,3,4; Basketball 1,2; Football 1,2,3,4.



Yvonne Schmitt; 207 W. Columbia; Ph. 55478; (Parish) St. Joseph; Drama 3; Honor Roll 3.

All these

things

and

many more

we say



Ricnard Stolz; 804 N. 3rd Ave; (Parish) St. Anthony; Glee Club 2.



Carolyn Simon; 410 N. St. Joe; Ph. 21263; (Parish) St. Boniface.



Bill Scott; 6 W. Mill Rd; Ph. 33584; (Parish) St. Theresa; Glee Club 1; Basketball 1,3; Golf 1,2,3,4.



Jim Seibert; R.R. 9; Ph. 37708; (Parish) St. Boniface; Glee Club 1,2; Athletic Club 4; Band 1; Honor Roll 1; Baseball 2,3; Wrestling 2,3,4; Football 1,2,3,4; Basketball 1,2.



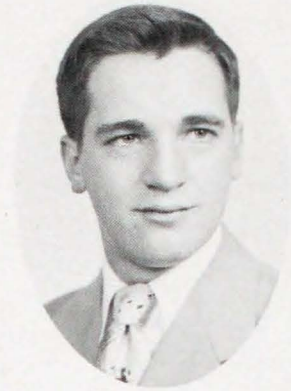
Ruby Seib; 2803 W. Virginia; Ph. 29438; (Parish) Sacred Heart; Choral Club 3,4; Glee Club 1,2,3,4; Pep Club 4; Yearbook 1; Musicals 1,2,3,4; Prom 3; G.A.A. 1,2,3,4; Freshman Sec.



Mildred Schnur; R.R. 2; Ph. 37731; (Parish) St. Agnes; Drama 3; Glee Club 1,2; Band 2,3,4; Yearbook 4; Paper 1,3,4; Musicals 1,2,3,4; Prom 3; Honor Roll 1,2,3; G.A.A. 1,2,3,4; Junior Vice-pres.; Drama Vice-pres. 3; Orchestra 3.



Annette Wannemuehler; 2608 W. Illinois; Ph. 26898; (Parish) Sacred Heart; Prom 3; Musicals 2; Drama 3; Glee Club 2; G.A.A. 1,2,3,4; G.A. A. Vice-president 3; Junior Sec.



Jim Wannemuehler; R.R. 2; Ph. St. Philip's 361; (Parish) St. Philip's Honor Roll 1; Musicals 1; Football 1.



Bill Weber; 3026 W. Virginia; Ph. 39654; (Parish) Sacred Heart; Musicals 2,3; College Club 4; Science Club 4; Band 2,3; Science Club Pres. 4.



Harold Weinzapfel; R.R. 2; Ph. St. Philip's 123; (Parish) St. Philip's; Agriculture Club 4.



Dorothy Wilhite; 665 Line Street; Ph. 48562; (Parish) St. John; Drama 3,4.



Carol Will; 2618 W. Virginia; Ph. 43794; (Parish) Sacred Heart; Prom 3; Musicals 1,2,3; Paper 3,4; Pep Club 4; Glee Club 1,2,3; G.A.A. 1,2,3,4.



Shirley Winiger; 825 W. Idlewild; Ph. 55036; (Parish) St. Boniface; Prom 3; Musicals 2; Drama 3; Glee Club 2; G. A.A. 1,2.



Rita Wink; 1906 W. Delaware; Ph. 42269; (Parish) St. Boniface; Honor Roll 2; Prom 3; Musicals 2,3,4; Choral Club 3,4; Drama 3; Glee Club 2,3,4; G.A.A. 1,2.



JoAnn Winterman; 2220 W. Maryland; Ph. 56859; (Parish) St. Boniface; Musicals 1,2; Choral Club 4; Glee Club 1,2,3.

Good Luck,
Seniors!



George Titzer; R.R. 13; Ph. 4-Parker; (Parish) St. Philip's.



Charlotte Stratman; 1602 Hollywood; Ph. 55553; (Parish) St. Agnes; Drama 3; Glee Club 2,3; Musicals 2,3; Prom 3; G.A.A. 2.



Shirley Story; 1021 W. Iowa Street; Ph. 39996; (Parish) St. Anthony.

But really

we love

and

honor you



Mary Tribble; 307 Oakley; Ph. 53223; (Parish) Assumption; Prom 3; Drama 3,4; G.A.A. 1,2.



Bob Trainer; 1010 W. Delaware; Ph. 28071; (Parish) St. Anthony; Musicals 3,4; Band 2,3,4.



Sharon Toelle; 2807 W. Virginia; Ph. 55511; (Parish) Sacred Heart; Prom 3; Musicals 1,2,3,4; Pep Club 4; Choral Club 3,4; Glee Club 1,2,3,4.

Dear

Mater Dei



Gala Peters; R.R. 4; Happe Road (Parish) Sacred Heart; Honor 1,2.



Joe Vessels; 2304 W. Columbia; Ph. 34786; (Parish) St. Boniface; Prom 3; Drama 3; Basketball 1; Freshman President.



Leonard Ulrich; 1316 N. 5th; 48427; (Parish) St. Anthony; Choral 4; Athletic Club 4; Football 4.

SENIORS



Richard Wrerth; 1002 B. Grove; Ph. 25240; (Parish) St. Anthony.



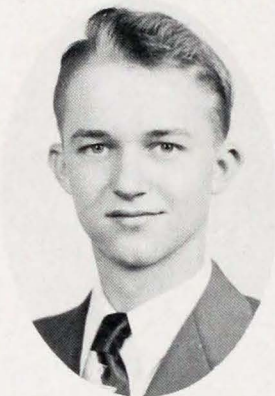
Cecilea Zenthofer; 2726 W. Franklin; Ph. 56830; (Parish) Sacred Heart.



Robert Weber; R.R. 1, Box 665 Ph. 43969; (Parish) St. Agnes; Mechanic Arts 3,4.



Urban Conrad; St. James; (Parish) Mechanic Arts 3,4.



Joe Schenck; St. Agnes (Parish) Mechanic Arts 3,4.



Neil Duncan; 101 Althaus Ave. Ph. 41312; (Parish) Sacred Heart; Mechanic Arts 3, 4.



Marvin Preske; St. Boniface; (Parish) Mechanic Arts 3,4.



William Huett; 1114 W. Tennessee St. (Parish) St. Anthony; Mechanic Arts 3,4.



William Beyer; 2720 First Ave. (Parish) St. Anthony; Mechanic Arts 3,4.



Roland Reiter; 1013 Second Ave; (Parish) St. Anthony; Mechanic Arts 3,4.

Seniors Not Pictured; Ronald Hall, Herman Neuendorf, Ronald Hupfer.



Junior Officers
Jackie Parkinson,
secretary; Bill
Reine, president;
Carolyn Town-
send, treasurer;
Charles Wargel,
vice-president.

JUNIOrs





Bob Allen



John Antey



Margie Bachman



Bill Baches



Kenneth Baehl



Martha Baehl



Virgil Baehl



Margaret Barron



Sondra Barth



Delores Bassemeier



Rose Mary Bates



Betty Ann Becht



Martha Becker



Ed Bergwitz



Leandra Bitter



Delores Blume



hiya

Martha Bregger

Bob Brenner

Bill Brown

Yvonne Browning

Donna Bufkin





Mary Magdalen Busch



Barbara Carlisle



Marcia Carter



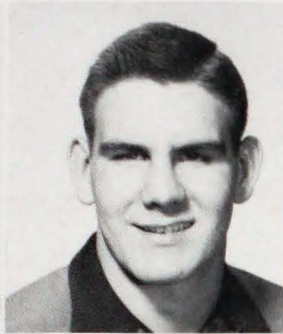
Walter Clevidence



Glenda Crowe



Charlene Daugherty



Don Deer



Dan Deibler



Don DeVillez



Dixie Doerr



Audrey Duncan



Marlene Effing



Phil Elliot



Darlene Elpers



Janice Ferguson



Rose Mary Ferguson

Ruth Feulner



Mary Folz



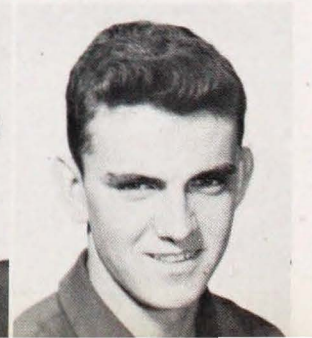
Herman Froehle



Darlene Frick

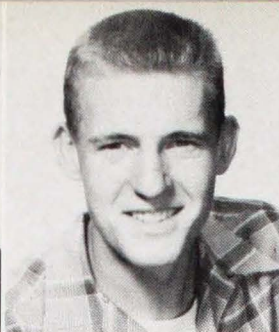


Carli Glaser





Joe Goebel



Joe Goelzhauser



Wilma Graves



Shirley Greenwell



Ruth Ann Gries



Carol Griesbacher



Sharon Hall



Betty Hamilton



Larry Hammerstein



Barbara Hartman



Bernice Hartman



Doris Head



Clarence Hertel



Mildred Hertel



Joan Jackson



Harold Kempf



p. 28

Good Times



Janith Kissel

Carol Kollker

Maurice Konrad

Paul Koresel

Tom Korressel





Charles Kneer



Delorah Kuester



Conrad Laib



Mary Rita Laubner



Bill Lintzneich



Colleen Logel



Margaret Lynch



Dale Magness



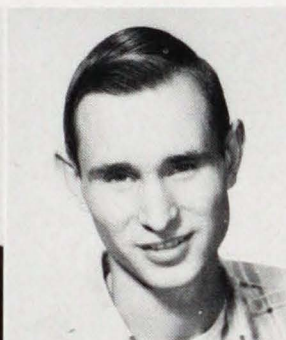
Hilda Martin



Laverne Mayer



Sharon Meier



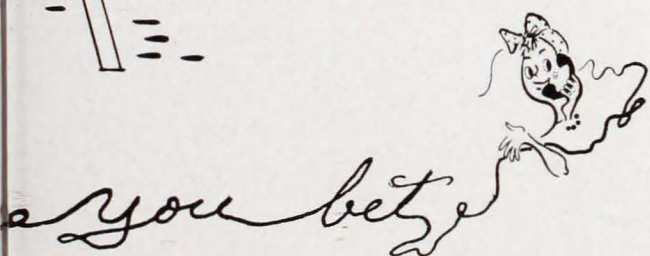
Don Metzler



Sylvia Metzler



Kathleen Miller



Martha Jean Miller



Pat Miller

Margie Miles



Connie Mohr



Don Niemeier



Clara Nurrenbern



Patty O'Daniel





Jackie Parkinson



Sharon Pate



Richard Paul



Tom Payne



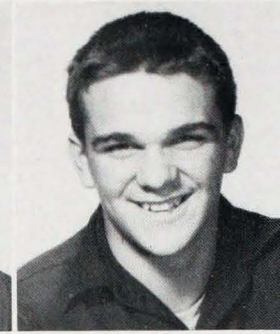
John Pepper



Bill Perkins



Tom Porter



Don Pyle



Caroline Reel



Bill Reine



June Reisz



Alvin Rexing



Mary Lou Rheinlander



Bill Roberson



Nancy Roberts



Dorothy Rollett



Soylong

Roselle Roy

Gerry Rummage

Frances Russler

Larry Schaefer

Herman Schapker

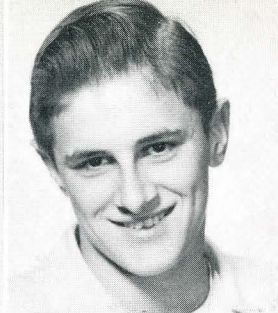




Janette Schauss



Betty Scheller



Don Scheller



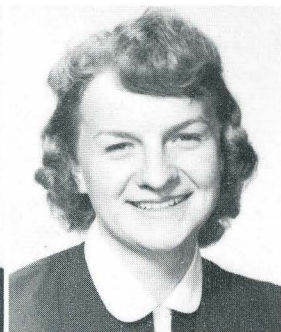
Donald Scheu



Charles Schmitt



Mary Gertrude Schnieider



Marilyn Schnur



Lorina Seibert



Pat Seibert



Mary Seng



Norma Simpson



William Skelton



Marian Snyder



William Spahn



till next year



Mary Ann Sproatt



Joan Steckler

Ronald Stolz



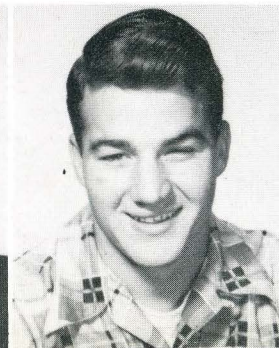
Carolyn Stricker



Carolyn Townsend



Bill Trainer



Montex Vrabe





Richard Wahl



Patricia Walker



Charlotte Walters



Charles Wargel



Sally Waters



Don Weinzapfel



Richard Wienzapfel



Mary Jane Wigger



Rose Mary Wildeman



Betty Jo Will



Mary Sue Will



Mary Lou Willett



Carolyn Winiger



Albert Wolf



Pat Wolf



Rita Wuerst



Don Zirkelbach



Albert Duncan



Carolyn Gehlhausen



MECHANIC ARTS



Kenny Bumb



Tom Dick



Francis Folz



Jerry Gossman



Don Kiesel



Ralph Koressel



James Loehr



William Milligan



Charles Niemeier



Gary Pace



Paul Silver



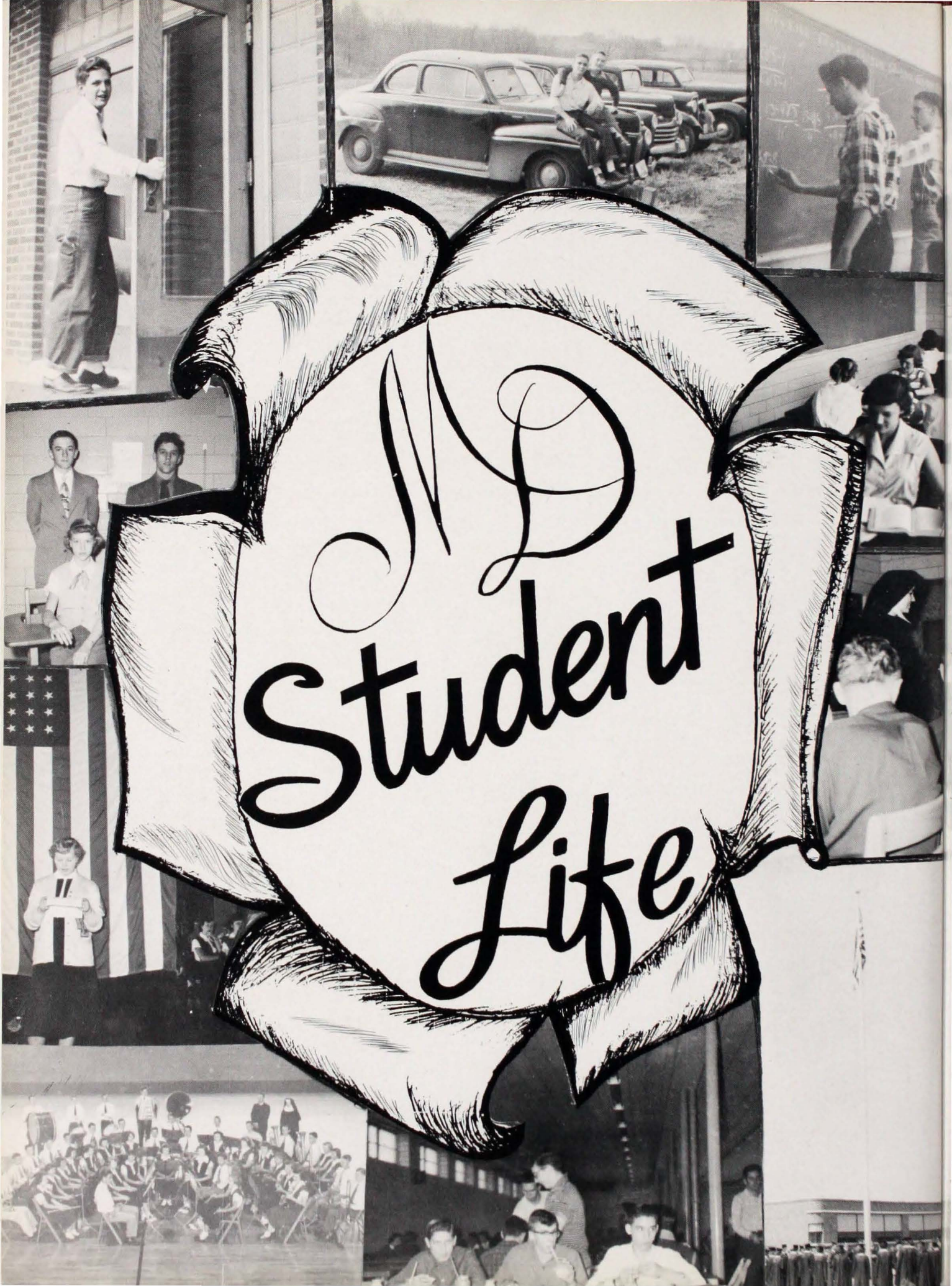
Douglas Smith



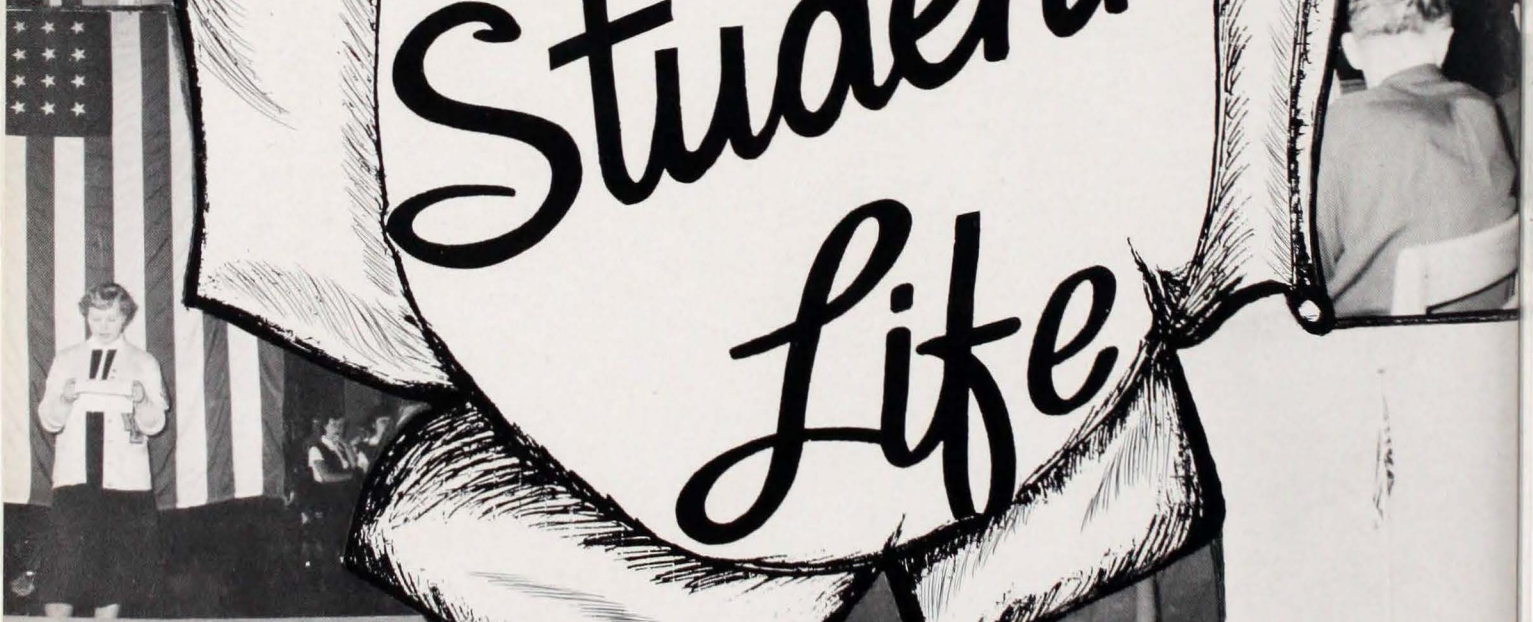
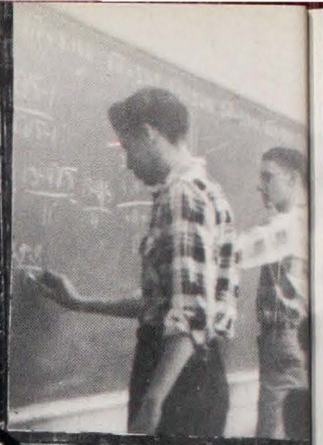
Dennis Williamson



Urban Wolf



High School
Student
Life



For GOD
for COUNTRY
for MATER DEI



Mary Koressel, president;
Steve Stuart, vice pres.;
Madonna Muensterman,
secretary; James Miller,
treasurer

Sophomores



Gilbert Adler



James Aldstadt



Jozetta Barron



Robert Baughn



Don Baumgart



William Baumgartner



Delores Bergert



Darlene Berendes



Joan Berendes



Marilyn Berendes



James Birk



Joseph Bitter

SOPHO



James Bittner



Leo Bittner



David Boger



Donald Borup



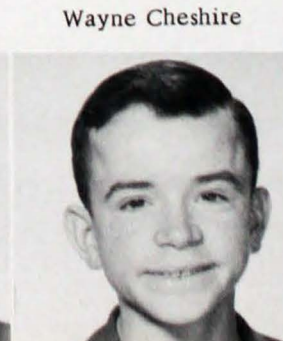
Pat Breivogel



Rosemary Brenner



Charles Castleman



Wayne Cheshire



Kenneth Coudret



Charlene Crawford



Coneda Crockett



James Deig



Pat Dillman



Jerry Drone



Francis J. Duncan



Ronald Durbin



Marilyn Effinger



John Elpers

MORES



Lawrence Elpers



Judith Emge



Carolyn Feller



Georgie Fisher



Kenneth Fisher



Betty Foster



Sharon Freeman

Teresa Fulkerson

Irving Glass

Robert Goebel

Ronald Goebel

William Goebel





JoAnn Goodrid



Doris Gossman



Clifford Grewe



Betty Gries



Silvia Hagen



Carol Sue Halbig



Orville Hall



Carol Sue Hamel



Margie Hamilton



Patricia Happel



Bob Hawes



Norman Hayden

SOPHO



Paul Hayden



Pat Hayden



Jeanette Helfrich



Julietta Helfrich



Steve Helfrich

Carolyn Helmer

Robert Heitzman

Charles Henderson

Esther Hertel





Ronald Hertel



James Hess



Charles Hicks



John Hildenbrand



Rose Mary Hobbs



Harold Hoefling



Regina Hollander



Mary Hollingsworth



Roberta Holtz

MORES



Robert House



Ronald Horney



Norman Humpert



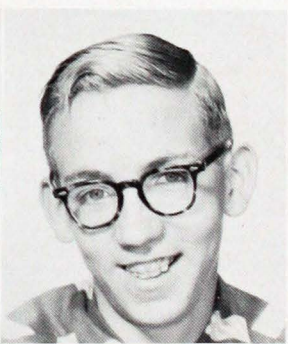
Carolyn Hummel



Nellie Jeffers

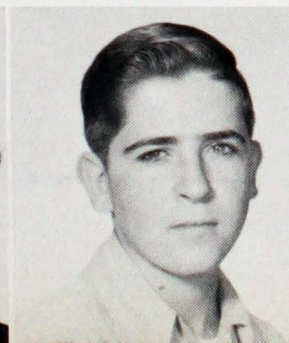


Doris Jenkins



David Jordan

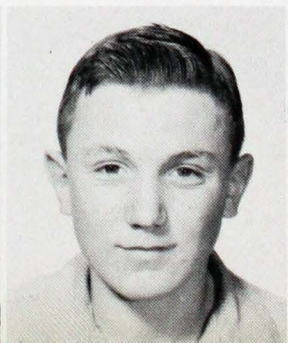
Carolyn Kercher



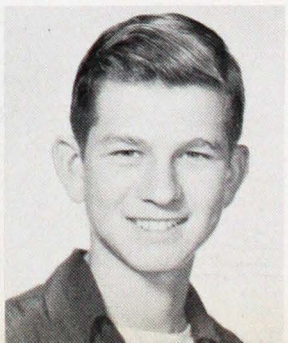
John Kern



Shirley Kissel



Ralph Kissel



Clarence Kissinger



Evelyn Koester



Dorothy Kolb



Ed Korff



Mary Koressel



Helen Kormelink



Alvin Krack



Rose Marie Kuhn



Susan Laib



Bob Lehmen



Deanna Lambie



Betty Lane



Lodine Laurence

SOPHO



Bob Ludwig



Martha Luigs



Mary Helen Marx



Michael McAtee



Fern McBride

James Miller

John Miller

Duane Mills

Peggy Minnette





Violet Moore



Jackie Muehlbauer



Walter Muehlbauer



Madonna Muensterman



Roger Muensterman



Eugene Muller



Tommy Niemeier



Richard Norman



Mary Elizabeth Oschner

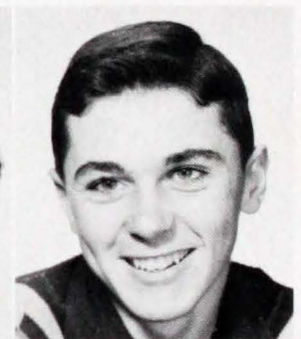
MORES



Rita Patry



Frances Raley



John Rebstock



Robert Rehrman



Lawrence Reine



Mary Alice Reiter



Mary Alice Reiter

William Rettig

Wilma Rexing

Peggy Reynolds

Patricia Richter

Helen Gene Rode

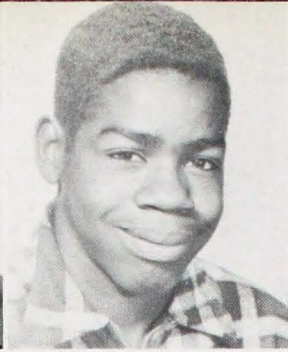




Carolyn Roedel



Robert Rollett



Alfred Rooney



Jo Ann Rudd



Mary Rummage



Delores Runau



Charles Russler



Janet Sartore



Dorothy Schaefer



Bernice Schenk



Donald Schenk



Jeanette Schenk

SOPHO



Ronald Schnepfer



Phyllis Schu



Don Schulz



William Schutz



James Scott

Clarence Seib

Curtis Seib

Pat Seibert





Robert Seibert



Sharon Seng



Virginia Stephan



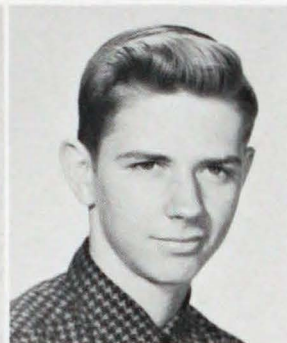
William Stocker



Joseph Staffleth



Jerry Stricker



Steve Stuart



Judy TeVault



Donald Thompson

MORES



Patricia Thompson



Charlene Titzer



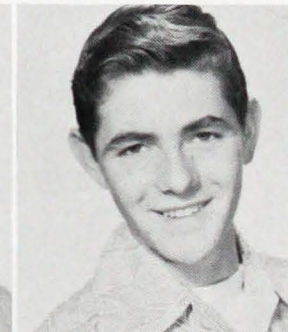
Gerald Toelle



Jerry Trainer



William Tribble



Wayne Vowels



Hazel Walker

William Wannemuehler



Joan Wannemuehler



Benedict Wargel



Kathryn Weber



John Weil



Alphons Weinzapfel



Jeanette Weinzapfel



Martha Weinzapfel



Ralph Weinzapfel



Arthur Werner



Don White



Susie Will



Barbara Willett



Lawrence Wink



Margie Wolf



Patricia Wolf



Thomas Wolf



James Woods



Colleen Wuerth



Shirley Zeller



Rosalie Zenthoefer

Thomas Zenthoefer



Sophomores not pictured: Mary Black, John Browning, John Christian, Mary Englert, Doris Frick, John Geuss, Paul Helfert, Jerry Lannon, Thomas Preske, Victor Weinzapfel, Anthony Witmer.

Freshmen



Betty Overfield, secretary;
Thomas May, treasurer;



Barbara Tepool, vice pres.;
Robert Koch, president



For GOD



for COUNTRY



for MATER DEI



Janet Abernathy



David Adams



Janet Alstadt



Carolyn Baehl



James Baehl



Donald Baehl



Ronald Baehl



Mary Ball



*I left for my first
day at high school
Feeling as fine
as could be.*

FRESHM



Ronald Barth



Joe Bassemier



James Bates



Susan Bauer



Betty Jo Bayer



Larry Bennett



Johnny Bergwitz



Barbara Berry



Chester Bittner



Larry Bittner

Judith Blackman

Mary Lee Blume

Robert Brandsasse

Larry Breivogel

Alberta Brenner





Tommy Hamilton

Sondra Harl

Martha Hartman

Robert Hartman

Patricia Hartman

MEN

*Not realizing
that I'd soon hear
"There goes another
green Freshie."*



Janet Hartweck

Joseph Hatfield

Julie Hayden



Rosalie Head

Rose Marie Henderson

Robert Herrman

Wayne Herrman

Wanda Hobbs



Robert Hoerner

Bob Hollowell

Marilou Horney

Betty Hosick

Rita Jackson

Martha Jochum

Janie Jones

Anita Jost

Ronald Kempf

Dorothy Keown





Larry Duncan



Donald Eickhoff



Karleen Feldhaus



Darwin Feller



Mary Feller



Donna Ferguson



Norbert Flittner



Jim Folz



FRESH

*The first Group
I met
Were Sophomores
You Bet!*



Ronald Frank



Roy Frankenberger



Bob Froehle



Patricia Gelhausen



Henry Guess



Mary Gies



Ruth Glaser



Pat Gorman



Marion Grabowski



Therese Arannan

Darrell Graves

Betty Greenwell

Arthur Guthery

Donald Haller

Mike Hamel





Bob Brinkmeyer



Alice Buckman



Spencer Bufkin



Marilyn Bumb



Norman Burdick

MEN

*They Didn't
Say Much To Me*

*Just Three Words
"Freshie Drop Dead"*



Norman Burnes



Georgia Busch



James Cain



Phyllis Carrico



Sam Carter



Delores Clark



Paul Clem



Justin Clemens



Ken Clevidence



Kerru Crane



Shirley Crockett



Carl Conningham



Phyllis Cutteridge

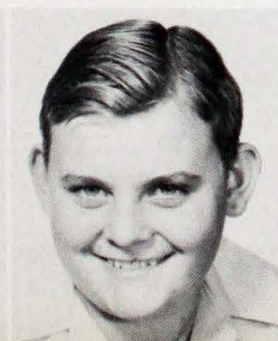
Jimmy Daugherty

Elmer Debes

Peter Dixon

Ann Duncan

Jerome Duncan





Delores Killebrew



Janice Killian



August Kissel



Mary Ann Klenck



Judith Knapp



Bob Kouk



Robert Louis



Sherrill Kockersperger



FRESH

*To This New
Little Freshie*

*Standing in the Middle
Of the Hall*



William Koester



Anthony Keowler



Robert Kormelink



Delores Krack



James Keuber



John Lane



George Laubner



Ronald Lehr



David Leinenbach



Sue Lewis

Phyllis Lewis

Jim Liggett

Carol Lincoln

David Lindenschmidt

Peter Lintzenick





Kathleen Loehr



Larry Luig



James Lutz



Larry Lutz



Lonnie Maidlow

MEN

*The Second Group
I Passed
Were Juniors*

*They All Looked
So Big and Tall*



Thomas May



Jack McCaslin



Sharon Meredith



Sharon Miller



Donald Moore



Bernadette Mosby



Bobbie Moss



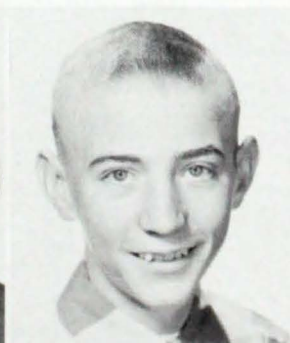
Ronald Neale



Haelene Nicholson



Loraine Norris



Bernard Nunning



Marian Offerman



Betty Overfield

Catherine Pepper

Mary Ann Petrig

Joan Pfeffer

Alice Phelps

Kenneth Reising





Johnny Rexing



Jim Reynolds



William Reinlander



James Riger



Earl Robertson



Pat Rohrbacher



Ann Rollett



Ruth Ann Rollett



FRESH

*The Next Groups
Were Seniors*

*Proud as Proud
Could Be.*



Patty Rubsam



James Sartore



Anthony Schapher



Carl Schenk



Carolyn Schmitt



Georgia Schnarr



Harold Schnarr



Dennis Scherider



Robert Schreiber



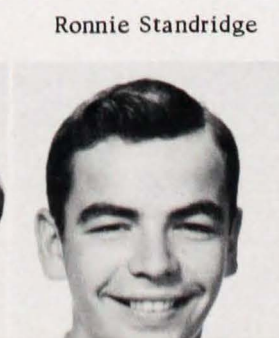
Donald Seng



Gene Slaughter



Margaret Synder



Ronnie Standridge



Donald Steckler



Janice Stephenson



Gary Stolz



Rex Strange



Mary Swain



Paul Tenborge



Anna Tenhumberg

MEN

*They Soon
Let Me Know*

*I was Just Another
Green Freshie*



Barbara Tepool



Shirley Thomas



Ronald Titzer



Mary Toelle



Paul Tornatta



Mary Uebing



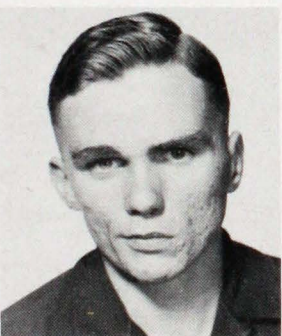
Betty Ann Utter



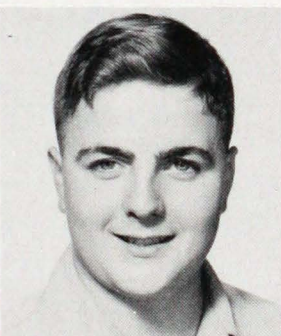
James Vessels



Kenneth Vowels



Gilbert Wannemuehler



Marcus Wassmer



DeRoo Weber



Elaine Weber

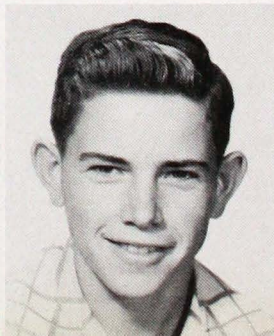
Ray Weber

Daniel Weinzapfel

Jeanette Weinzapfel

Martha Weinzapfel

Robert Weinzapfel





Allen Wentzel



Rose Ann Will



Joann Wingerter



Gerald Winiger

*Many Things More Could Be Written
But I Choose Only To Say*

*I Go To The Best School In Town
The School Called Mater Dei*



Tom Yackle



Harlon Ziliak



Shirley Ziliak



Alice Dillman



Betty Martin



Robert Wagner



Robert Wigger



Ronnie Wannemuehler



Frances Wargel



Neal Kuhlman



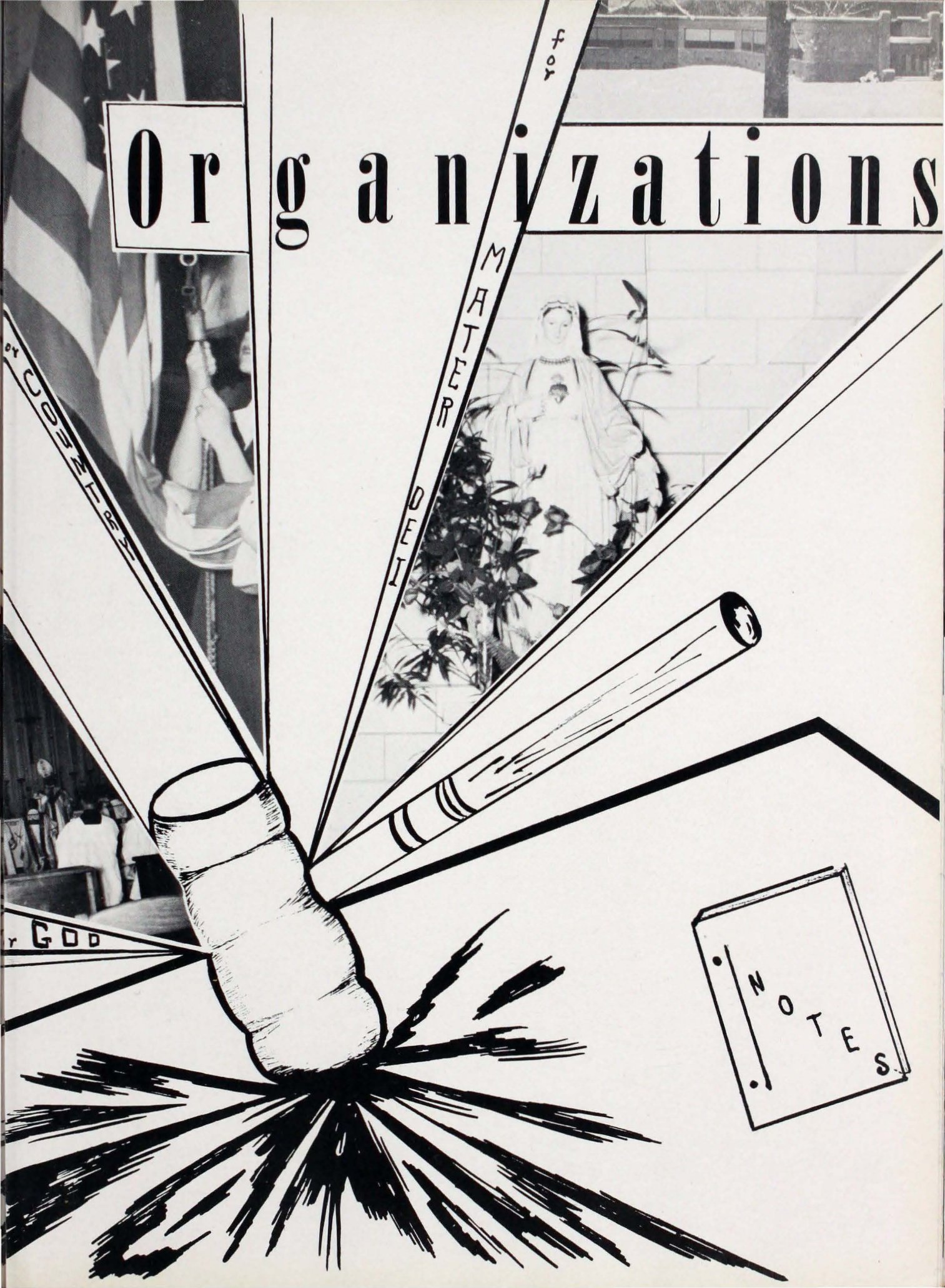
Janice Higgs



Richard Jordan

F
R
E
S
H
M
E
N

Organizations



COOPER

M
A
T
T
E
R

D
E
I

f
o
r

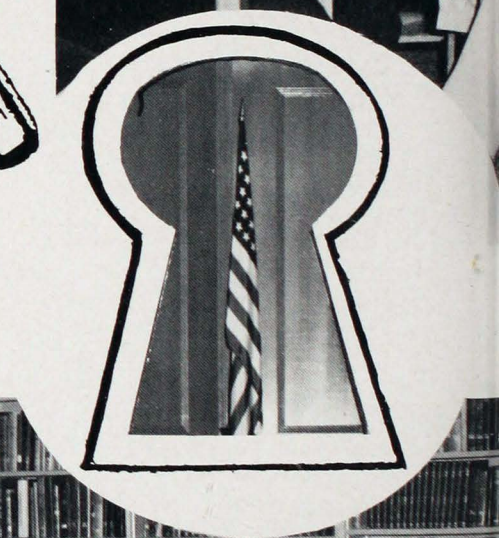
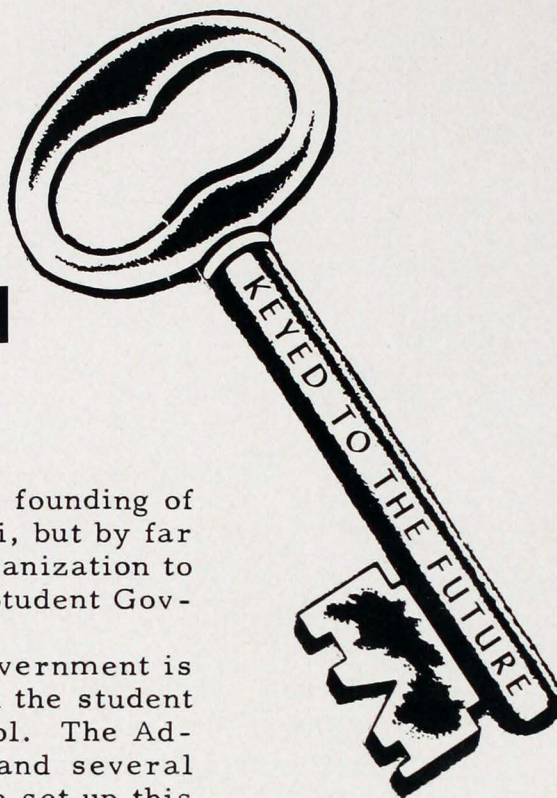
r
G
O
D

NOTES

They Govern The City of MATER DEI

This year has seen the founding of many clubs at Mater Dei, but by far the most important organization to come into being is the Student Government.

Every detail of city government is to have its counterpart in the student government of our school. The Administrative, Judicial, and several other departments were set up this year. The Student City also elected it's Student Council with one councilman from each homeroom.





Student Government Officials:

Betty Kercher, City Clerk; Joe Hertel, Mayor; Bill Kruchek, Fire Chief; Jerry Horstketter, Traffic Commissioner; Mildred Schnur, Comtroller; Richard Emge, Recreation Director; Bob Drone, Police Chief; Bob Allen, Safety Commissioner; Roger Lehr, Health Commissioner; Charles Moutoux, Recreation Commissioner. (in front of table) Bob Hagel, Judge.

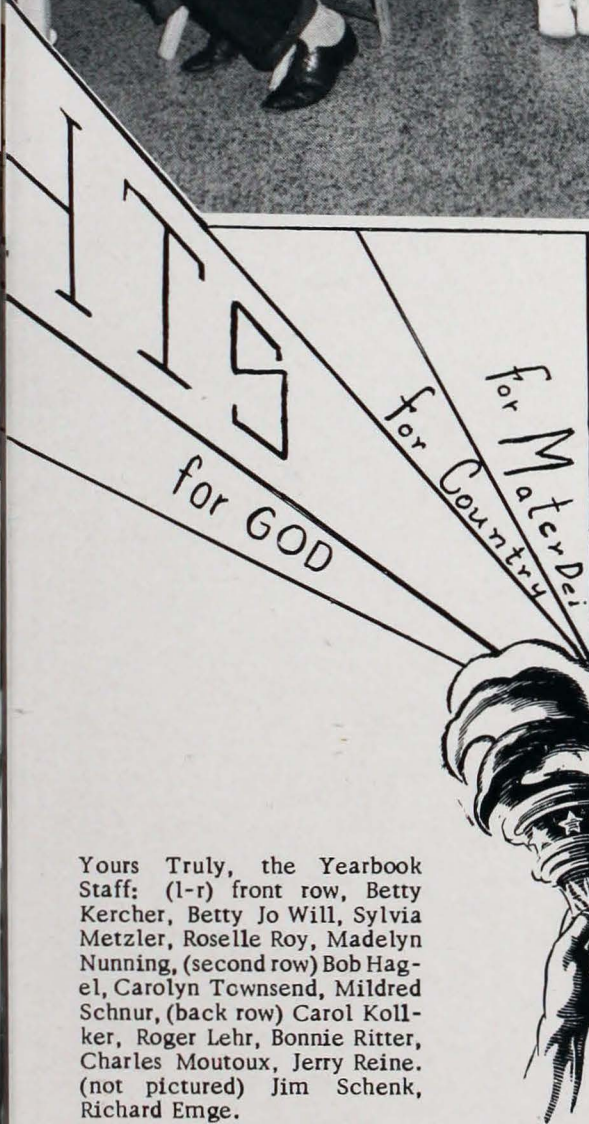


Student Council

(in front of table) Gilbert Wannemuehler, Mildred Hertel, Carolyn Townsend, Don Deer, Steve Stuart. (behind table) Tommy Hamilton, Larry Lutz, Alice Dillman, Joe Vessels, Mayor Joe Hertel, Jerry Kelle, Susan Laib, Joan Berendes, Tom Niemeier, Bill Goebel. Student Councilman not pictured: Jerry Barron, Bill Reine, Norman Burnes.

Every year since Mater Dei has been built, the Yearbook Staff has grown in the understanding of how to give the school a bigger and better annual. This year's staff has an advantage over all the other Yearbook Staffs because we have Sister Mary Angela as Faculty Advisor. When Sister came to us from Ferdinand, she not only brought along her knowledge of a library but also her knowledge of how to put a yearbook together. So, the Staff with the help of Sister hopes to have given the students the biggest and best Yearbook ever.





Hi-Lights

Member of Catholic School Press Association
 Published Every Three Weeks Through the School Year
 By The Journalism Students of Mater Dei High School
 Subscription rate: \$1.00 per year

EDITORIAL STAFF

- Editor Agnes Kissell
- Assistant Editor Bonnie Clark
- Page One Editors Bonnie Ritter, Betty Jo Will
- Page Two Editors Mary Frances Barron, Sylvia Metzler
- Page Three Editors Rita Mayer, Mildred Hertel
- Page Four Editors Carli Glaser, Virgil Baehl
- Sports Writers Carol Kollker, Don Niemeier, Jim Schenk
- Alumni Editors Carol Will, Celie Zenthoefter
- Photographer Bonnie Ritter
- Reporters Roselle Roy, Madelyn Nunning, Mary Folz,
 Bill Lintzenich, Carl Glaser, Rita Patry, Helen Kormelink, Barbara
 Tepool, Mildred Schnur.

BUSINESS STAFF

- Business Managers Elgene Rexing, Rosemary Hall
- Circulation Manager Barbara Garrison
- Typists and Circulation Staff Alice Folz, Verna Paul,
 Betty Offerman, Rosemary Hall, Elgene Rexing
- Advertising Managers Ruth Matz, Carolyn Orman

Yours Truly, the Yearbook Staff: (l-r) front row, Betty Kercher, Betty Jo Will, Sylvia Metzler, Roselle Roy, Madelyn Nunning, (second row) Bob Hageel, Carolyn Townsend, Mildred Schnur, (back row) Carol Kollker, Roger Lehr, Bonnie Ritter, Charles Moutoux, Jerry Reine. (not pictured) Jim Schenk, Richard Emge.

Uphold Catholic Ideals
 Promote Better Citizenship
 Commend Good Scholarship

Here Comes the

BAND

The Mater Dei Band under the Direction of Mr. Robert Hormuth and the encouragement of Father Lautner, has made great strides toward its goal of perpetuating the art of music at Mater Dei.

This year marked the first appearance of the organization in uniform. The uniform, strictly military, consists of black trousers, and red coats with gold piping.

The Band appeared in uniform at all home football games, several local parades, community gatherings, and religious services.

The concert band plays at school assemblies and all important school functions. Highlighting the season are the Spring Concert, Solo and Ensemble Contest, and State Band Contest.

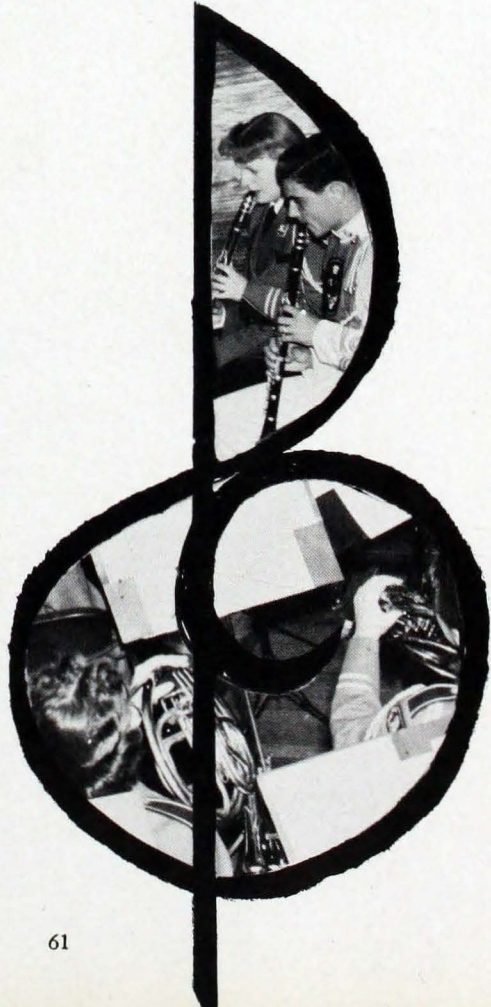
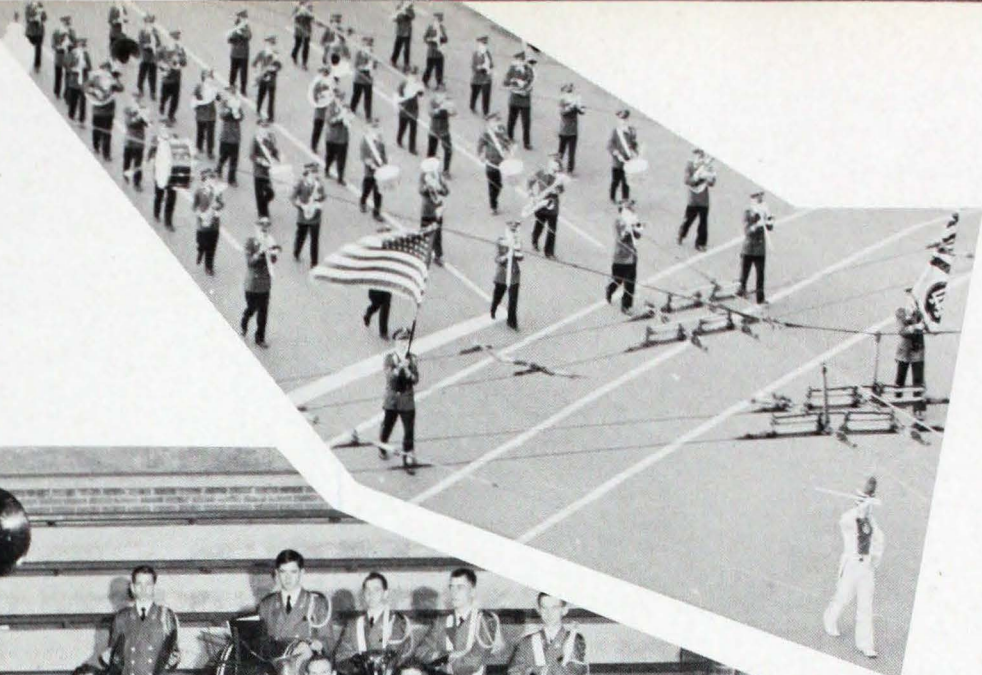
In July 1952, the Mater Dei Band accepted the invitation of the Knights of St. John to furnish the music for their National Convention held in Indianapolis.

Band officers for the year are Bill Reine, president; Mary Mag. Busch, veep; Connie Mohr, secretary; and Madelyn Nunning, treasurer.



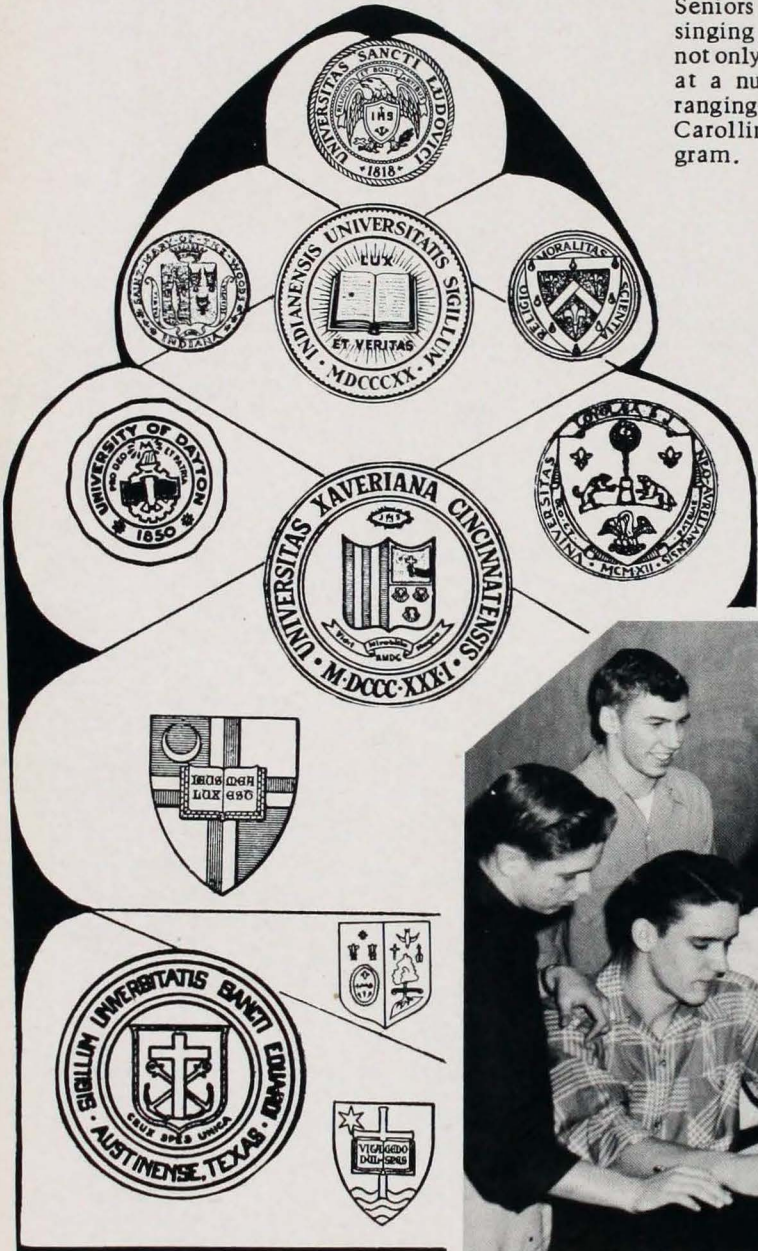
Mr. Robert Hormuth, director





Choral Club

This select group of Juniors and Seniors have known the joy of singing beautifully together, not only here at Mater Dei, but at a number of performances, ranging from the Christmas Carolling to a local T-V program.



College Club





Choral Club

Row 1: P. Seibert, S. Toelle, J. Antey, S. Claspell, F. Russler.
 Row 2: P. Walker, R. Wink, R. Schoenbachler, B. Adams, M. Sch-nieder, M. Becker. Row 3: M. Barron, A. Castleman, V. Jochum, C. Knapp, R. Seib, R. Gries, M. Laubner. Row 4: R. Roy, S. Met-zler, D. Burns, N. Simpson, M. Scales, Kerch. Row 5: W. Clevi-dence, B. Hagel, F. Kormelink, B. Lintzenich, V. Baehl, H. Hart-wick, R. Bassemeier, C. Moutoux, B. Kruchek.



When students are planning to continue their educa-tion after high school, they want to find the best college to study the particular subject in which they wish to major. Mater Dei has solved this problem by forming a College Club. In this club the students not only find out what each college has to offer in the way of studies but also the cost of tuition, board, and many other aspects of college life which will enable the student to choose the best school for his higher education.

Jerry Reine, Charles Moutoux, Rich Emge, Jim Gerst, Joe Stofleth, John Weil, Bill Ball, Phil Elliott, Bill Weber, Lowell Glass. 2nd row: Bob Hagel, Lorraine Dorris, Martha Jean Miller, Margaret Lynch, Elgene Rexing, Pat Wolf, Delorah Kuester, Marilyn Schnur, Madelyn Nunning, Rosemary Hall. 3rd row: Sister Irmingard, Joe Dulin, Carolyn Winiger.

Glee Club





(Bottom l-r) Phyllis Lewis, Janet Abernathy, Marilyn Bumb, Barbara Berry, Patricia Gorman, Judith Blackman, Carol Lincoln, Sherrill Kockersperger, Mary Toelle (Second row) Joann Wingerter, Georgia Busch, Rose Marie Henderson, Janet Hartweck, Anna Tenhumberg, Julie Hayden, Shirley Thomas, Therese Gran- nan, Mary Ball, Dolores Killebrew, Janice Killian (Third row) Mary Feller, Kathleen Loehr, Phyllis Cut- teridge, Marian Offerman, Betty Greenwell, Susan Bauer, Janet Alstadt, Sharon Miller, Pat Rohrbacher, Rosalie Head, Alice Buckman (Top row) Betty Ann Utter, Shirley Ziliak, Mary Ann Klenck, Anita Jost, Patty Rubsam, Ann Rollett, Ruth Rollett, Janice Stephenson, Bernadette Mosby, Rose Ann Will.



Sophomore Glee Club (Bottom row 1-4) Rita Patry, Regina Hollander, Shirley Zeller, Mary Rumage, Carol Kercher, Esther Hertel, Jo Ann Rudd, Rosalie Zenthoefer, Peggie Minnette, Madonna Muensterman (Second row) Deanna Lambie, Jackie Muehlbauer, Susie Will, Mary Koressel, Betty Foster, Martha Luigs, Roberta Holtz, Darlene Berendes, Virginia Stephan (Third row) Helen Gene Rode, Pat Thompson, Pat Hayden, Sylvia Hagan, Judy Tevault, Dorothy Schaefer, Mary Eliz. Oschner, Carolyn Helmer (Fourth row) Joan Wannemuehler, Carolyn Feller, Jozetta Barron, Nellie Jeffers, Doris Gossman, Carol Sue Hamel, Frances Roley (Fifth row) Marilyn Efinger, Martha Weinzapfel, Hazel Walker, Dolores Bengert, Coneda Crockett, Georgie Fischer, Pat Richter (Top row) Janet Sartore, David Boger, Barbara Willett, Clarence Kissinger, Fern McBride.

AGRICULTURE CLUB

Making tests in the lab is only one of the activities of the busy Future Christian Farmers, under the direction and encouragement of Mr. Ralph Joest.





Bill Baumgart, Jerry Preske, Tom Scheller, Joe Gerteisen, Leonard Angermeier, George Titzer, John Pepper, Alvin Rexing, Kenneth Baehl, Mr. Joest, Clarence Hertel, Don Shceu, Joe Goebel, Ray Flittner, Harold Kempf.

Under the diversified family-centered home-making program all activities go on simultaneously as in family life. The students rotate putting all equipment, automatic washers, dryer, electric ranges, refrigerator, home freezer, and hand irons to work.

The primary objective of the club is to develop worthy attitudes and ideals in Christian Family Living by contributing to the happiness of the family, by assuming a share in its responsibilities and its social experiences, by promoting a closer contact between the home and the school and by living up to the worthy ideals of a happy, useful, and satisfying Christian Family Life.

The following are Club members:

President: Helen Kormelink

Vice Pres.: Patricia Dillman

Sec. Treas.: Ladine Lawrence

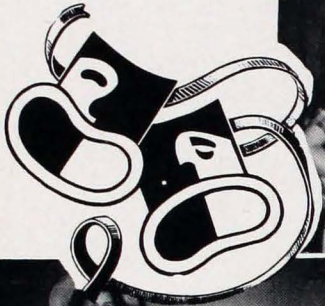
Mary Lee Blume, Patricia Breivogel, Marilyn Bumb, Charleen Crawford, Charlene Daugherty, Marlene Effing, Marilyn Efinger, Janice Ferguson, Teresa Fulkerson, Joan Goodrid, Betty Gries, Carol Sue Halbig, Dorothy Kolb, Mary Ann Petrig, Barbara Tepool, Betty Utter, Hazel Walker, Barbara Willet.



HOMEMAKING CLUB

DRAMATICS CLUB

The Mater Deites who are ready to put on a show any time belong to the Dramatics Club. A peppy bunch of over sixty members, under the direction of Sister Benedicta, with Betty Jo Will, Pres.; Mike Hamel, Vice Pres.; Sylvia Metzler, Sec.; Marilyn Schnur, Treas. We present the Dramatics club "in preview".



LATIN CLUB

Mater Dei students interested in the Classics have a chapter in the national organization of the Junior Classical League. You will see the members wearing a silver pin, an emblem of their membership. Kathryn Weber is Consul assisted by the Scriba Ann Rollett. Martha Weinzapfel, Ruth Rollett, Marian Offerman, Mary Ball and Betty Martin are the other members of the society.



LATIN CLUB

Betty Martin, Ruth Rollett, Martha Weinzapfel, Ann Rollett, Kathryn Weber, Mary Ball, Marian Offerman, Sister Mary Victor, Faculty Sponsor.



SPANISH CLUB

La Madre de Dios Club Espanol has begun its program: to know, to study, to appreciate the life and customs of our neighbors who speak Spanish.

Officers: Sharon Hall - Pres.

Sharon Miller - V. Pres.

Dorothy Schaefer - Sec. - Treas.

Members (Top row l-r) John Antey, Clifford Grewe, Jim Gerst, George Laubner, Pat Rohrbacher, Karleen Feldhaus, Martha Hartman, Rosalie Head, Carolyn Kercher, Mary Lou Geis, Coleen Logel, Sharon Miller, Sharon Hall, Dorothy Schaefer, Sister Mary Victor, Sponsor.

SCIENCE CLUB



President: Bill Weber



Vice Pres:
Ed Bergwitz

ALL YE WORKS OF THE LORD

BLESS THE LORD



Name chosen was L.A.B.'s "Little Atomic Brains". Patron Saint: St. Albert the Great. Roll Call answered by giving name of scientist with brief sketch of his work. Special topics of discussion and activity; telescope, taxidermy, wind tunnels and wing structures.

Faculty Sponsor: Sister Marietta



(First row) Annette Wannemuehler, Pat Brenner, Mildred Schnur, Bonnie Ritter, Ruby Seib, Rosie Zenthoefer, Mary Koressel, Carol Kollker, Betty Kercher, Madelyn Nunning, Mary Lou Rheinlander, Sondra Barth, Rita Patry, Susie Laib (Second row) Charlotte Walters, Connie Mohr, Kathleen Miller, Carolyn Townsend, Colleen Logel, Betty Jo Will, Sharon Holl, Norma Simpson, Margie Bachman, Leandra Bitter, Caroline Reel, Sharon Pate, Judy Tevault, Nellie Jeffers (Third row) Mary Busch, Dolores Bassemeier, Margie Miles, Pat Seibert, Frances Russler, Peggie Minnette, Colleen Wuerth, Dorothy Kolb.

G.
A.
A.

Darlene Berendes, Jo Ann Rudd, Susie Will, Janis Killian, Ruth Glaser, (Fourth row) Delores Krack, Alice Buckman, Mary Ann Klenk, Anita Joest, Donna Ferguson, Sondra Harl, Pat Gorman, Marilyn Bumb, Mary Lou Gies, Rosalie Heal, Mary Lee Blume, Rita Jackson, Betty Hoesick, Mary Ruth Ball, Phyllis Lewis, (Fifth row) Marhta Hartman, Mary Rumage, Shirley Zeller, Mary C. Swain, Sharon Meredith, Betty Jo Bayer, Sue Lewis, Alice Dillamn, Susan Bauer, Carol Lincoln, Sherrill Kokie, Mary Toelle, Shirley Thomas, Delores Kellebrew, Dorothy Keown, (Not pictured) Pat Gehlhausen, Rosie Schoenbachler.

Mrs. Mary Patry Director





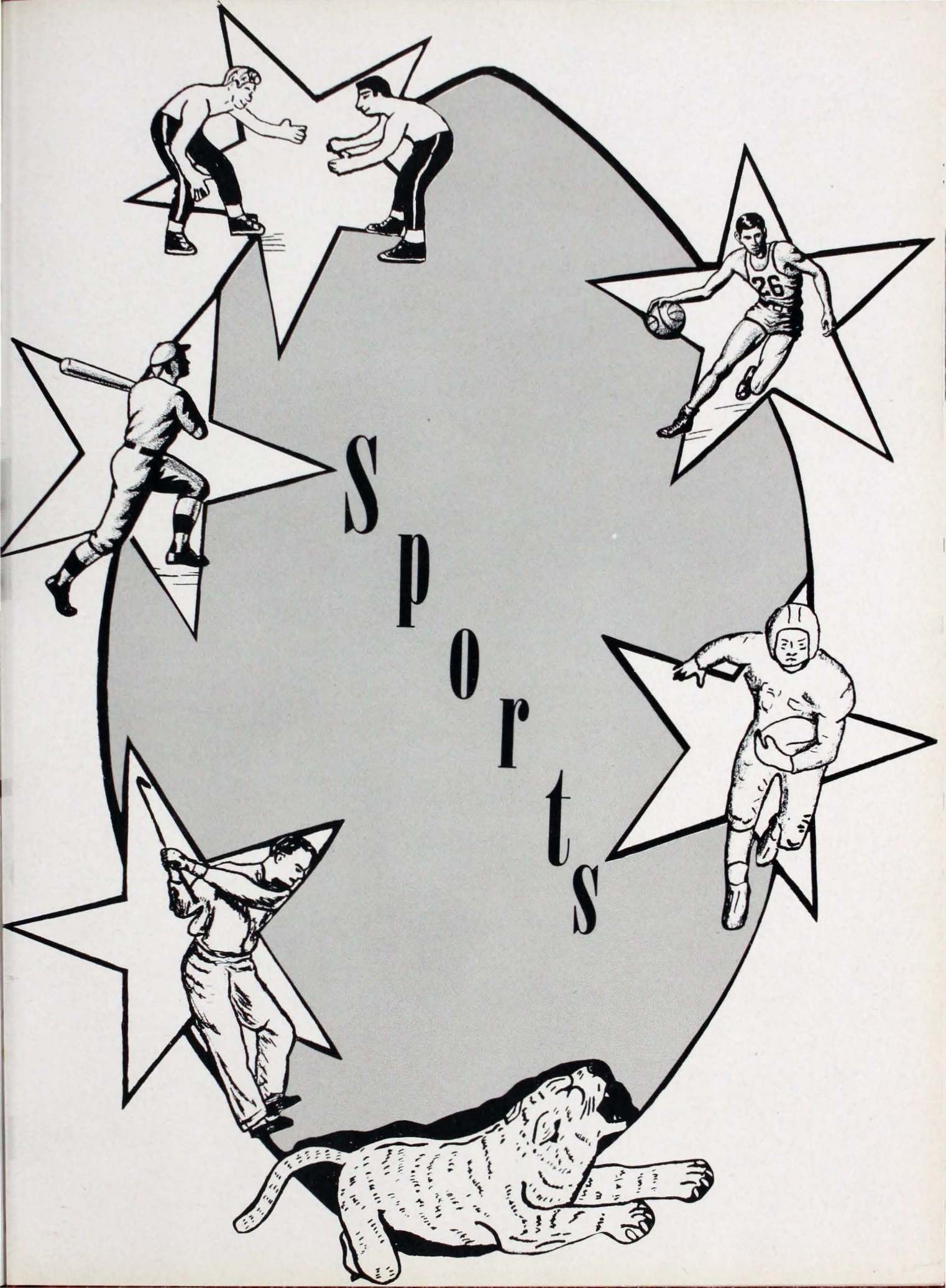
PEP CLUB



Pep Club Officers: Virgil Baehl, Walt Clevidence, Agnes Kissel

Those who came to our basketball games noticed a white-clad cheering section. It was the Mater Dei Pep Club - The Spirit of the School! Through the untiring efforts of these boys and girls, and especially of the club sponsor, Mr. "Mike" Ellert, Mater Dei could always yell the opposition, whether the team was winning or losing. The cheers for the Red and Gold Teams were led by: Cheerleaders Mike Hamel, Charles Moutoux, Jerry Reine, Richard Emge and Bob Hagel (above)





S
P
O
R
T
S

FOOTBALL

Wildcat's of '52'

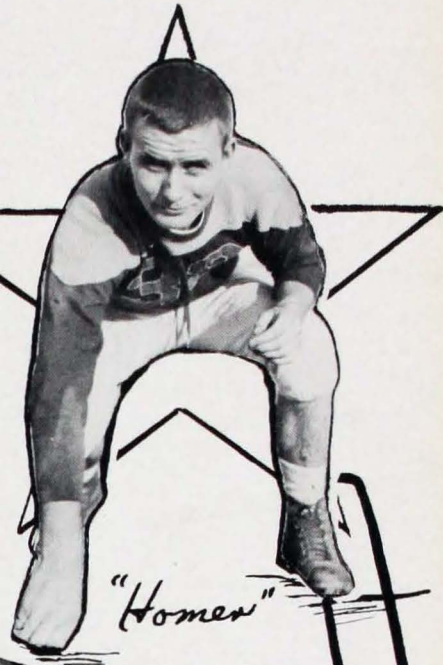


(Front row l-r) J. Seibert, C. Niemeier, R. Allen, J. Horstketter, B. Perkins, U. Seibert, R. Drone, B. Trainer, B. Bow, C. Kneer, D. Buckman, (Second row) J. Trainer, J. Schenk, J. Goelzhausen, L. Ulrich, W. Baker, W. Kruchek, T. Payne, J. Preske, W. Lintzenich, C. Wargel, D. Niemeier, (Third row) Assistant Coach, Gene Logel, B. Baumgart, J. Duncan, D. Baumgart, K. Coudret, B. Stocker, M. McAtee, J. Drone, J. Miller, T. Niemeier, R. Weinzafel, Coach Len Will, (Fourth row) H. Hoefling, K. Fisher, B. Wannemuehler, D. Schenk, S. Helfrich, E. Muller, W. Baumgartner, J. Rebstock, R. Seibert, D. Magness, Student Manager, L. Hannerstein, Student Manger.

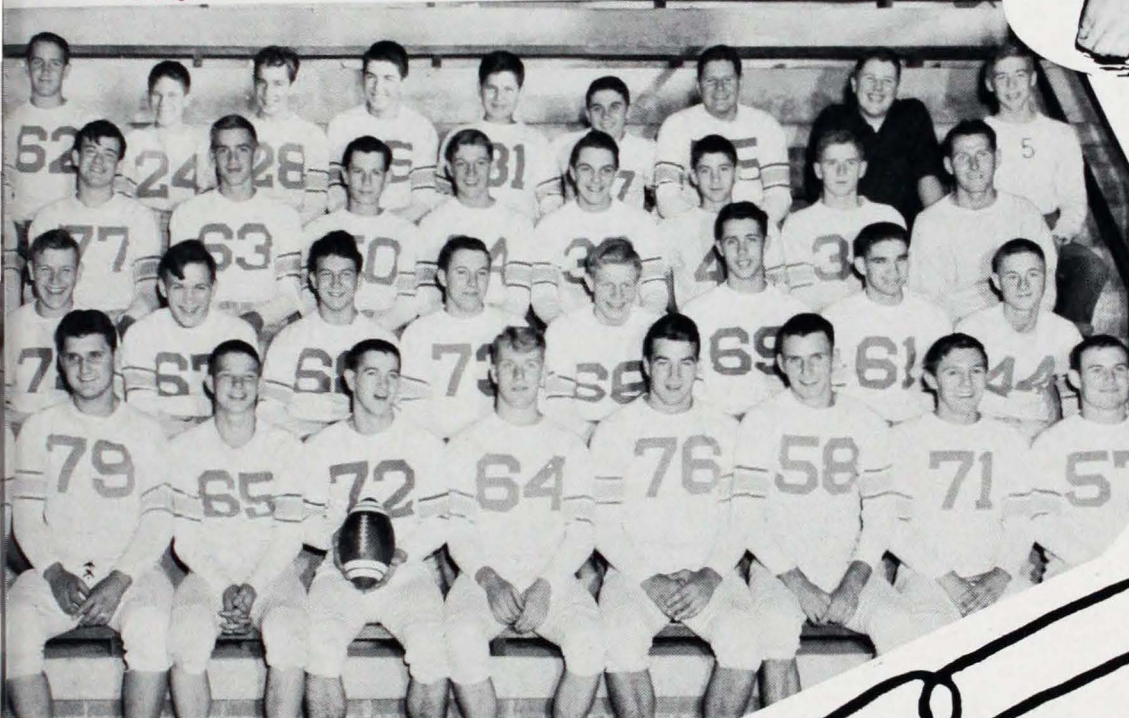




Bob



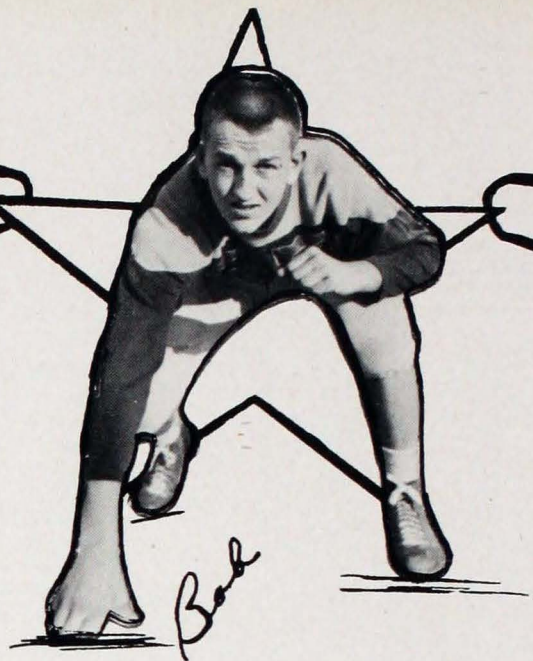
"Homer"



Horsie

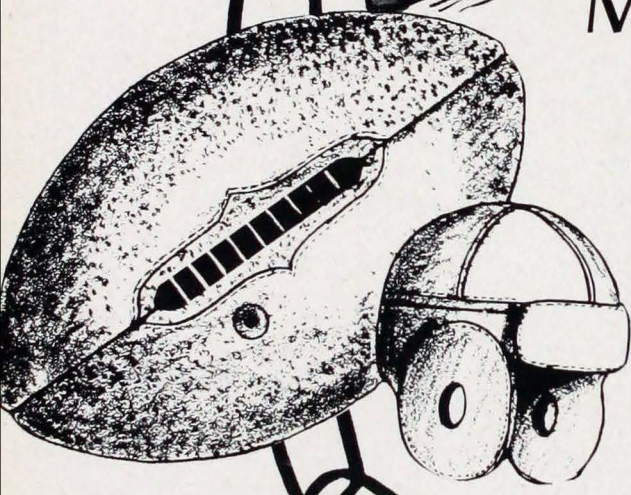


Bill



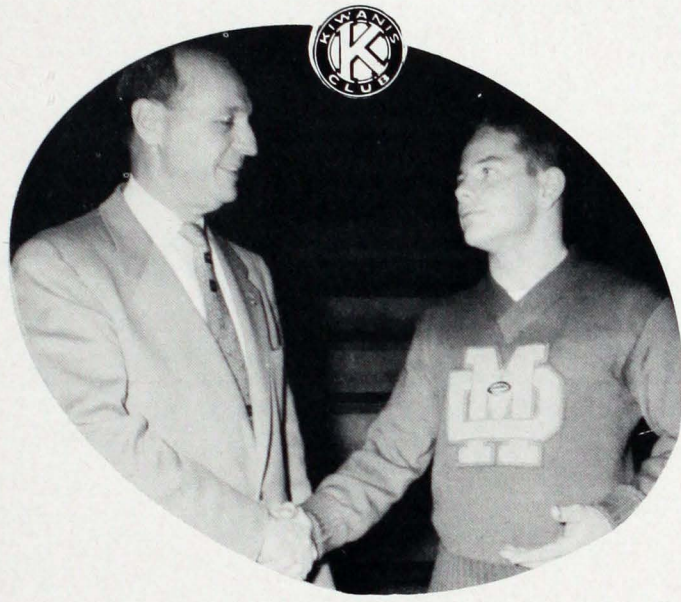
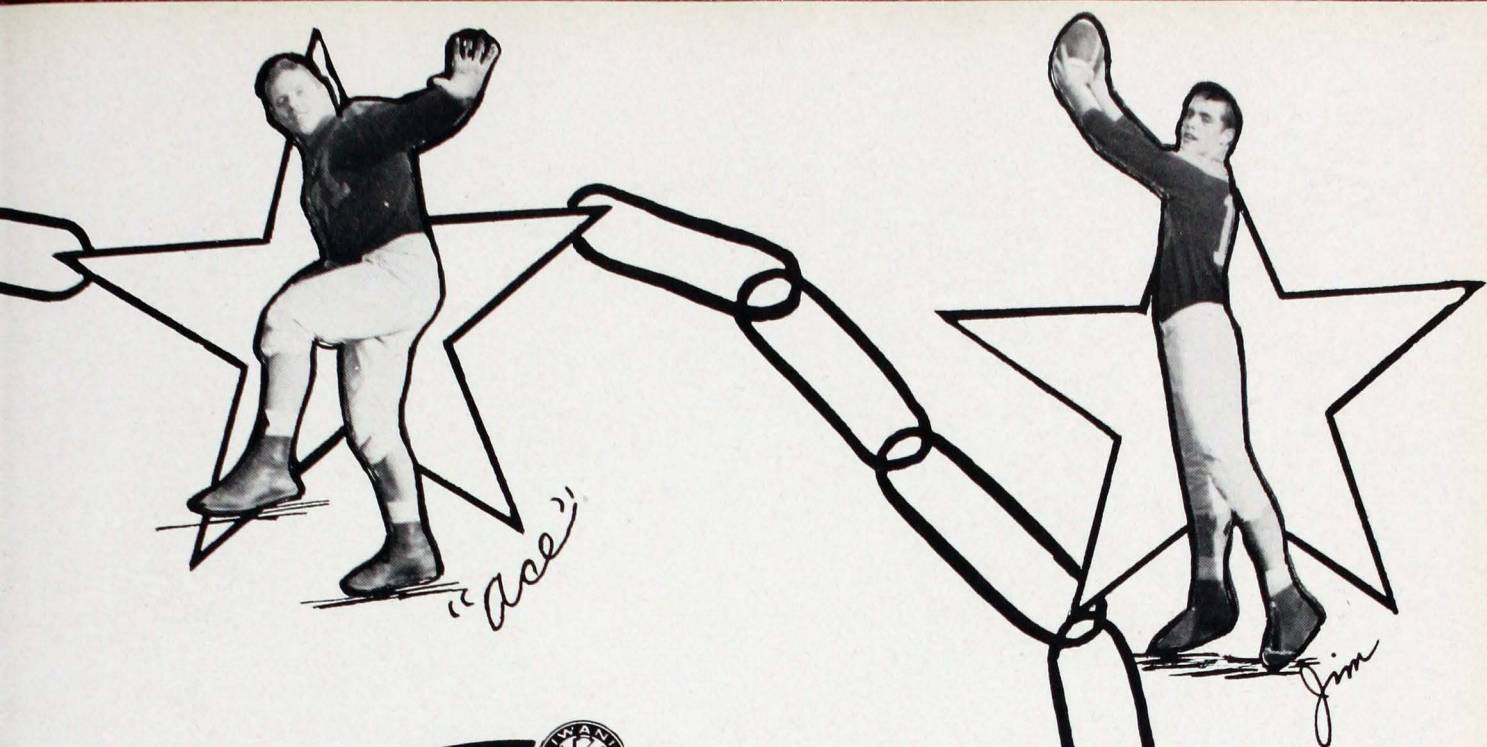
MATER DEI WILDCATS

1952 SCHEDULE

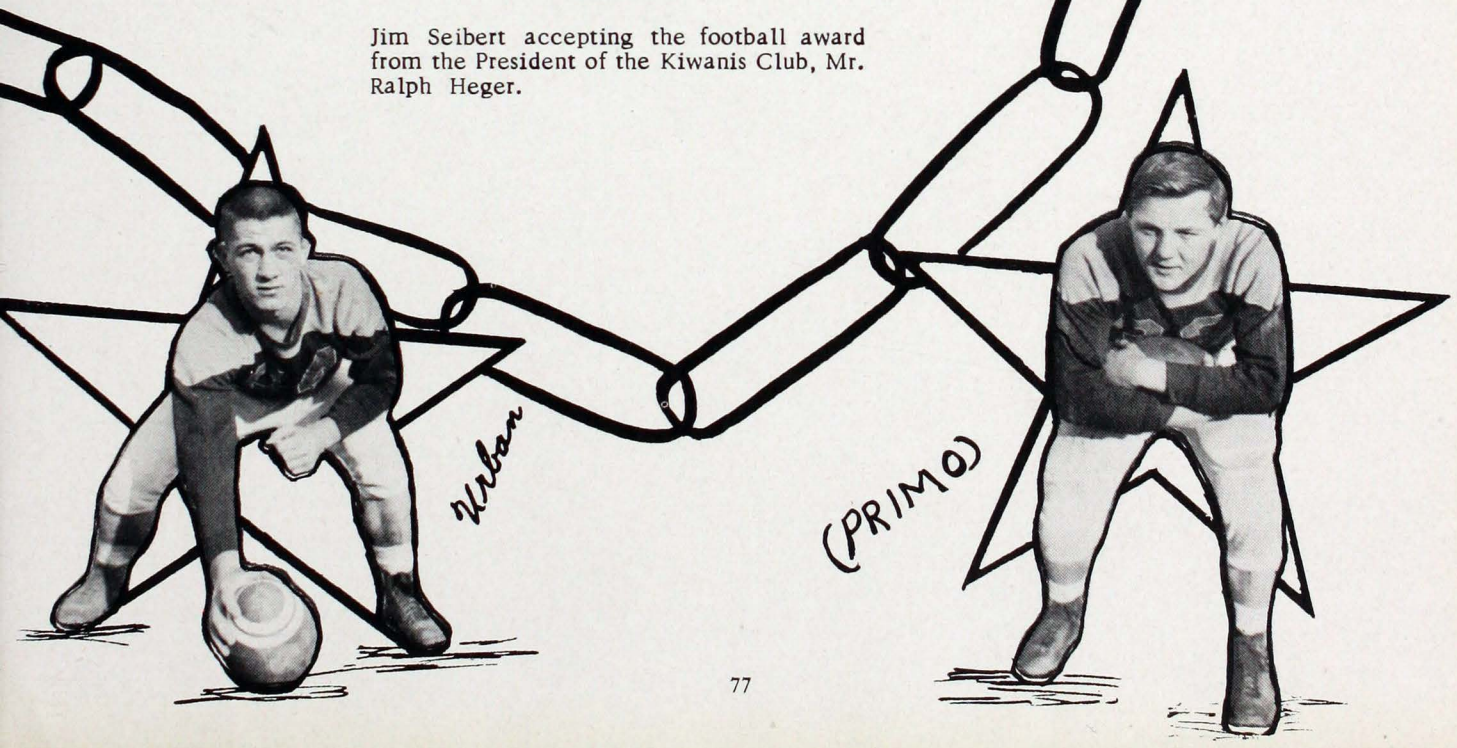


Boonville	7	Mater Dei	12
Central	20	Mater Dei	0
Carmi	21	Mater Dei	38
Bosse	7	Mater Dei	12
Reitz	19	Mater Dei	7
Sturgis	25	Mater Dei	20
Memorial	27	Mater Dei	0
O'boro Catholic	20	Mater Dei	20
Lincoln	6	Mater Dei	67

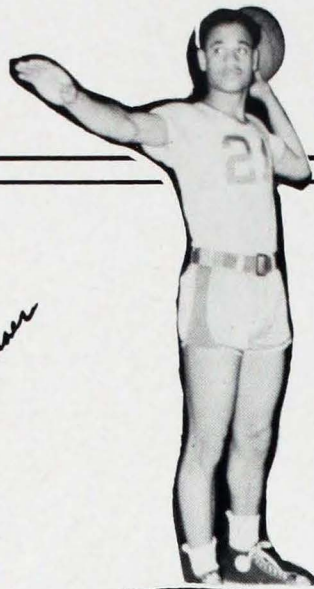




Jim Seibert accepting the football award from the President of the Kiwanis Club, Mr. Ralph Heger.



*Sayell
Class*



Joe Halghammer



Don Niemais

Joe Hertel



BASKETBALL

Larry Elberhard



Joe Sulkin



Paul Ahemey

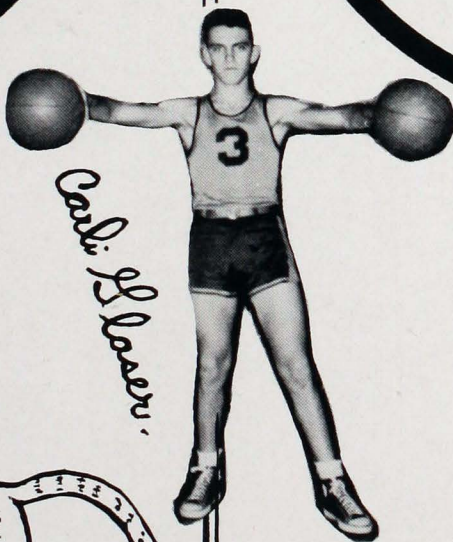


1952 Basketball 1953

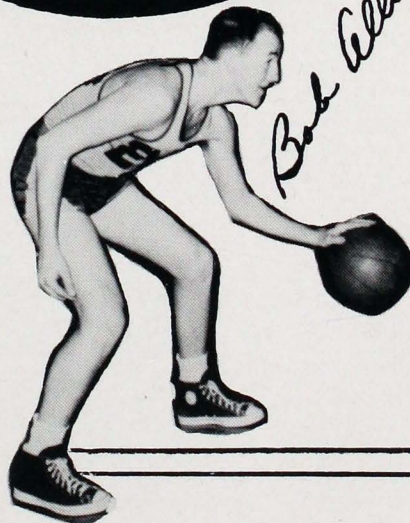
New Harmony	71	Mater Dei	56
Memorial	58	Mater Dei	66
Chandler	48	Mater Dei	62
Vin. Catholic	75	Mater Dei	52
Holland	64	Mater Dei	53
Mt. Vernon	64	Mater Dei	42
Elberfeld	49	Mater Dei	72
Silver Creek	69	Mater Dei	43
Boonville	55	Mater Dei	44
St. Mary Paducah	80	Mater Dei	72
Dubois	85	Mater Dei	71
Ft. Branch	59	Mater Dei	60
St. John's	69	Mater Dei	68
Rockport	55	Mater Dei	57
Cannelton	57	Mater Dei	56
Niagara	44	Mater Dei	51
Lincoln	63	Mater Dei	41
Wash. Catholic	91	Mater Dei	71

MATER DEI WILDCATS

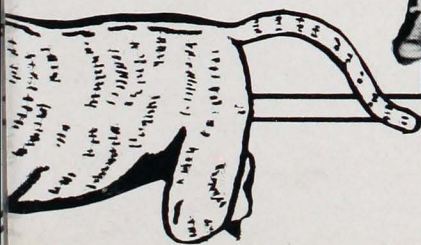
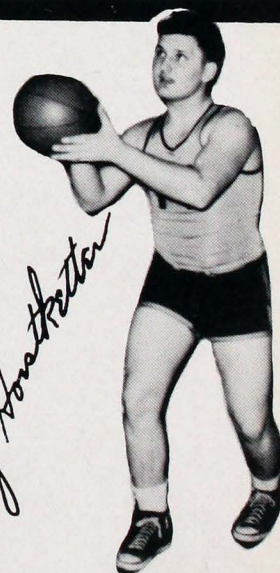
Carlin Lawson



Bob Allen



Jerry Konstantin



'CAT



103 lb. Curtis Seib



95 lb. Don Moors



112 lb. Ronnie Lehr



120 lb. Bob Brenner



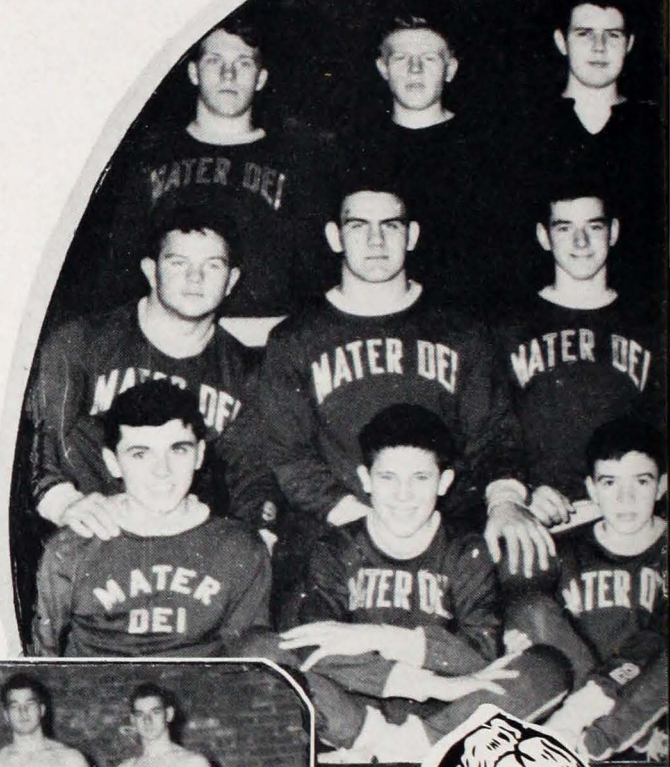
127 lb. Ed. Bergwitz



133 lb. Jim Schenk

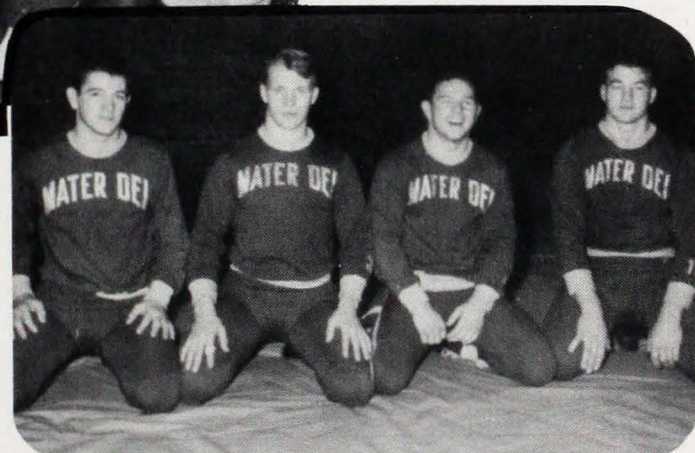
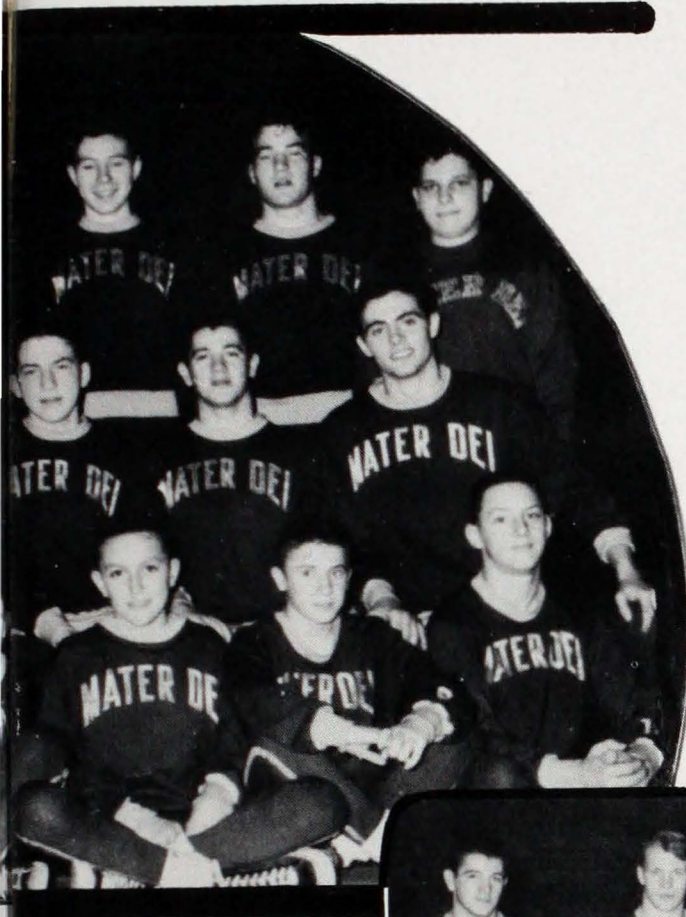
WILDCAT WRESTLING TEAM:
 Front row, (l-r) Brebstock, D. Schenk, D. Schnieder, C. Seib, D. Moore, R. Lehr. 2nd row: J. Seibert, D. Deer, T. Scheller, B. Brenner, U. Seibert, J. Schenk. 3rd row: B. Drone, J. Preske, J. Duncan, B. Kormelink, B. Trainer, B. Baumgartner.

SECTIONAL RIBBON WINNERS (l-r)
 J. Schenk, J. Seibert, U. Seibert, C. Seib, B. Drone, B. Trainer, T. Scheller.



SEASON SCORES		Opponents
Mater Dei	8	Southport 38
	34	University 15
	20	Decater Cen 26
	33	University 15
	51	Reitz 2
	49	Central 3
	8	Decater Central 38
	35	Reitz 9
	49	Central 9

MAT MEN



Eligible for State Championship: U. Seibert, Bob Drone, Jim Seibert, Bill Trainer.

"THE CHAMP"

Bill Trainer, Indiana State High School Heavyweight Champion, was undefeated in 14 matches during the season. Bill is the first teenage wrestler to bring a State Championship to Evansville in 33 years of prep wrestling.

WILDCAT MAT RECORD

4th in Southern Indiana Sectional Match, 13th in State Prep Wrestling Tourney.

Heavyweight Bill Trainer
State Champion



138 lb. Tom Scheller



145 lb. Urban Seibert



Mr. Gus Peters, Head Coach.
He was assisted by Jack Walsh.



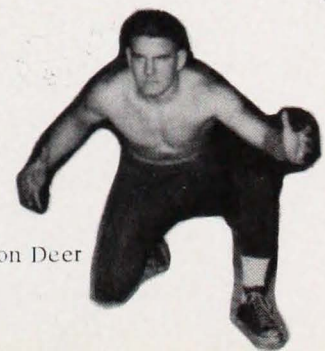
154 lb. Jim Seibert



165 lb. Bob Drone



175 lb. Don Deer



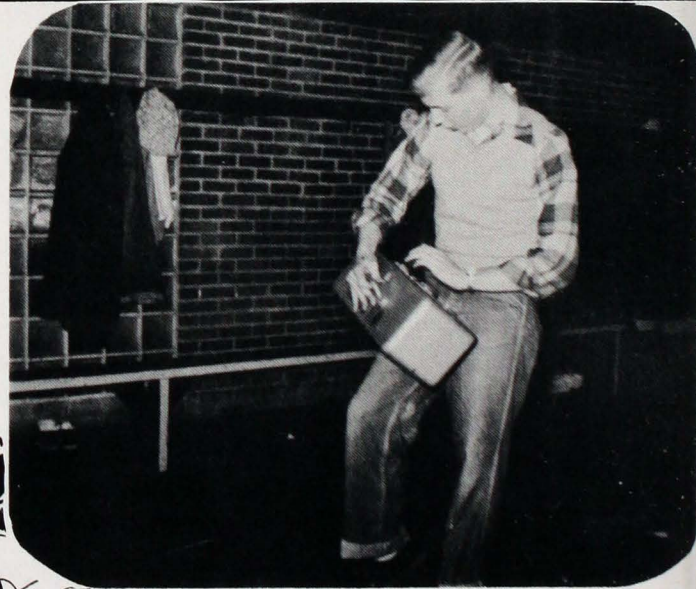


Two of the earliest birds on the golf course, Paul Koressel & Walter Clevidence, posed during a few practice shots at school. However, we cannot bring you the golf team, because we go to press before the Golf season opens. Baseball, too, opens its season too late for us. We promise pictures of this year's Golf and Baseball teams in the '54 Hi-Lights.

GOLF

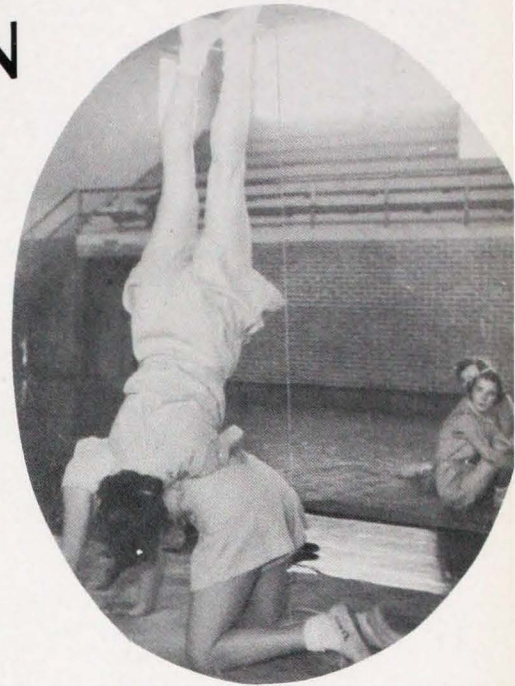


BEHIND THE TEAMS



The Athletic Manager, Mr. Paul "Mike" Ellert stands by every Wildcat Team. With every ticket he gives a hearty smile free, and with every game he gives "One big Rah". "Miney" and the student managers: Larry Hamerstien, Tony Koeller, Dale Magness, do more than wave flags, pennants, and dust rags. Keeping the Gym, the equipment and everything in shape, is a big job, and they do it well.

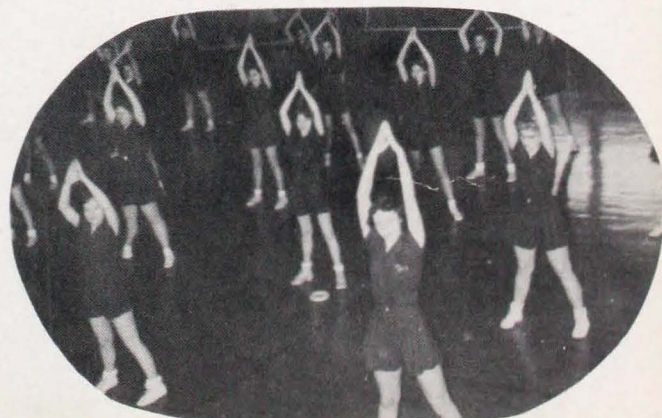
THE WILDCAT WOMEN



TUMBLING
BASEBALL
VOLLEYBALL
BASKETBALL
BOWLING



Betty Kercher, Carol Kollker and Bonnie Ritter take a bit of early practice at baseball.





Planning the Girls' Sports Program in the G.A.A. Office are: (l-r) Carol Kollker, Sister Mary Victor, Betty Kercher, Mrs. Mary Party, Mary Koessel, Rosalie Zenthoefer.



VOLLEYBALL WINNERS (Bottom row, r-l) Coleen Logel, Carol Kollker, Kathleen Miller, Betty Jo Will, Connie Mohr, Charlotte Walter, Carolyn Townsend, Frances Russler, Pat Seibert.



GOD

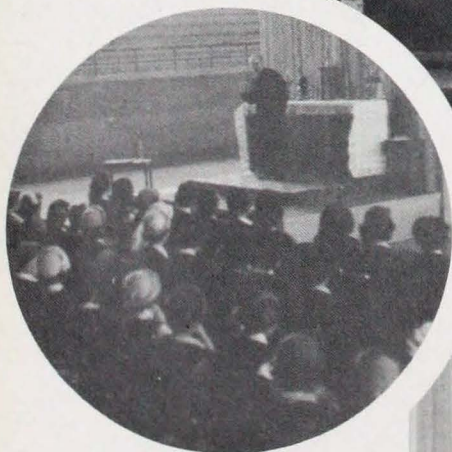
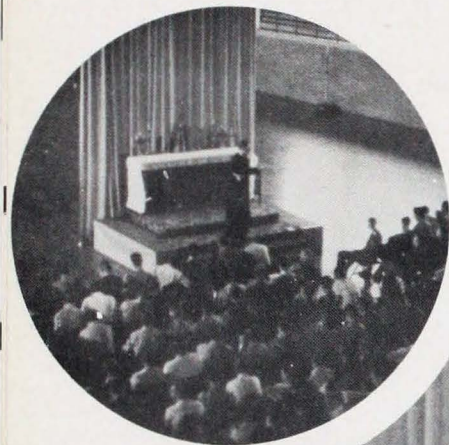
Country

Mater Dei



The annual RETREAT held during the first three days of Holy Week, is a time of special guidance. The Retreats both last year and this year were under the direction of Rev. John Dickson, S.M. (top) and Rev. Father Koch, S.J. Both retreat masters proved able speakers and effective guidance directors.

RELIGIOUS



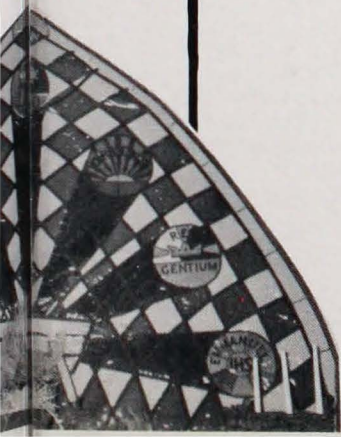
The Advent Window made by Rev. Robert Dieg last year was repaired and replaced by a group of Junior and Senior girls this advent.

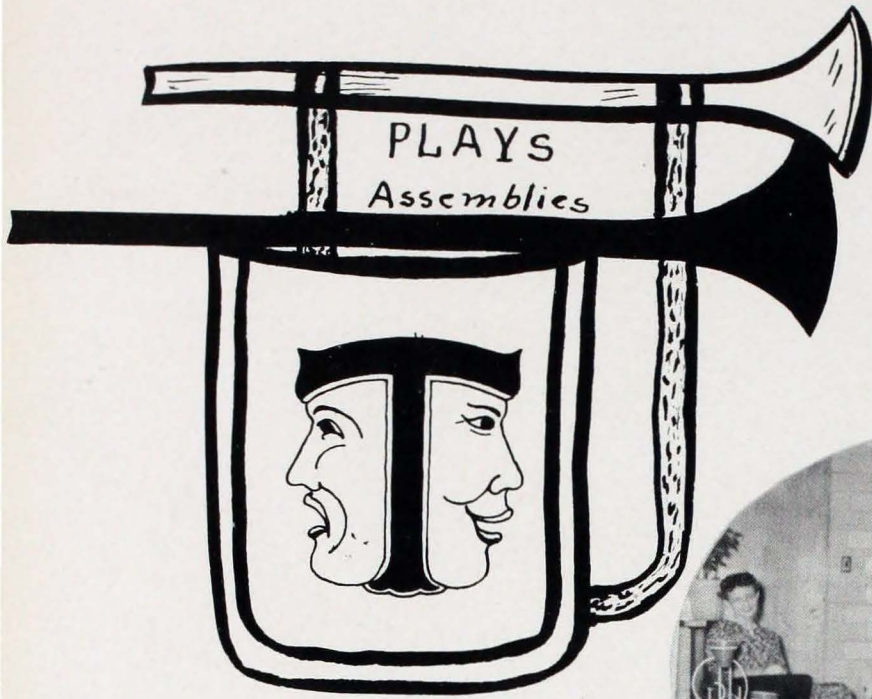


ACTIVITIES

On special days, at intervals throughout the year, the Holy Sacrifice of the Mass is offered in the Gym and the whole Student Body attends. One cannot attend without being impressed with the solemnity of the occasion by the conduct of the 700 Mater Dei Students as well as by the sacred ceremonies. The pictures below show Mass on Oct. 11, Inauguration Day and on Ash Wednesday.

During February, Mother M. Clarissa, Superior of the 17 Benedictine teachers at Mater Dei, visited Mater Dei for the first time. She is telling Sister M. Irmingard, principal, how well she was impressed with the school.





Martha Luigs & Rita Patry, leads in, "Our Lady's Dancer", Dec. 5, Assembly.



Thanksgiving Plays: (top) Dramatic Club players, Betty J. Will, J. Parkinson, Roselle Roy, Mike Hamel, Bob Hagel in Thanksgiving Without. (lower) Speech Students shown in Thanksgiving at Rubino's: Jim Schenk, Bob Bow, Bill Kruchek, Jerry Preske, Dixie Pike, Richard Nunning.



Remember the witches at the Halloween Assembly, before the Sturgis game?

ACTIVITIES



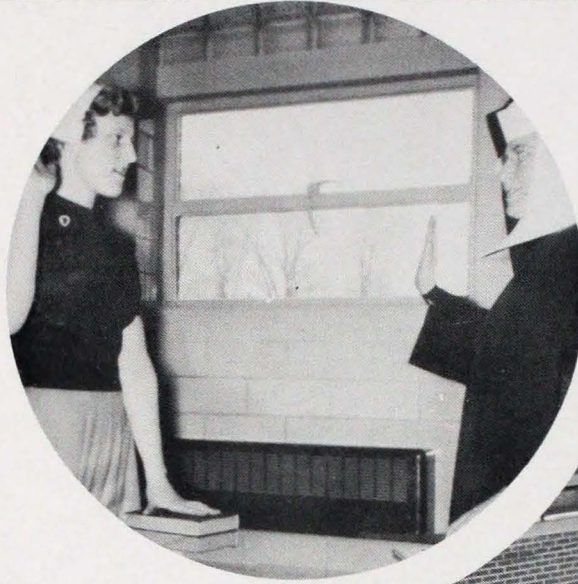
THE CHRISTMAS PLAY with its Gypsy setting, was the first play to be presented on the M.D. stage. Using the stage necessitated a double cast, The Actors (above) Jackie Parkinson, Mike Hamel, Bob Froehle, Julie Hayden, Sylvia Metzler, Bob Bow, Roger Lehr. (not in picture) Susie Laib, Helen J. Rode. The Voices (at left) Sharon Meridith, Dixie Pike, Judy Knapp, Susie Will, (back row) Rex Strange, Jim Schenk, Bob Behme, Ronald Neal. (not pictured) Pat Thompson.

The play was directed by Sister M. Benedicta and Sister Mary Angela.

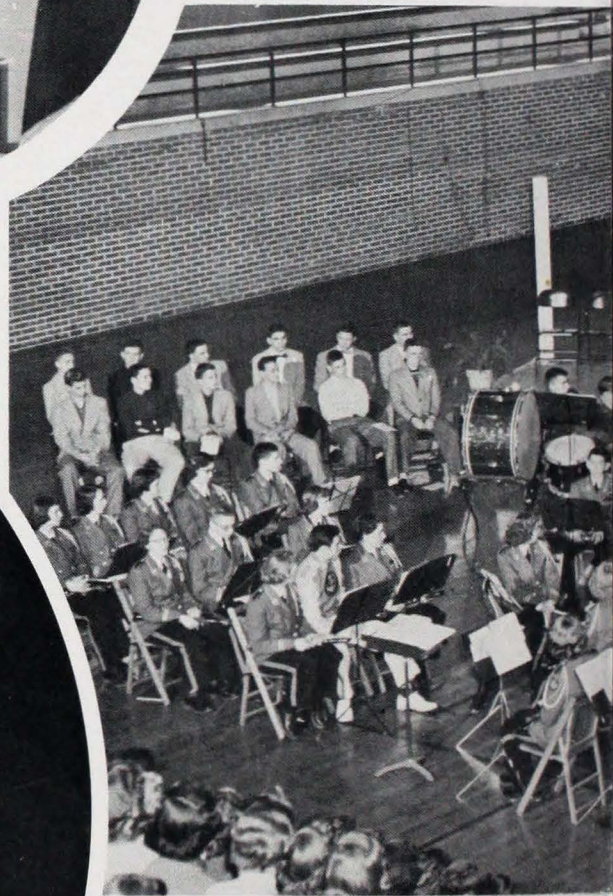
INAUGURATION



Betty Kercher is sworn in as City Clerk, by the Principal in the office before the inaugural ceremonies begin.



Clerk Betty Kercher Swears in Judge Hagel.



Joe Hertel officially becomes First Mayor of Mater Dei when he is sworn in by Judge Bob Hagel.



The setting of the Inaugural ceremonies was designed and arranged by a committee under the direction of Roger Lehr. Mildred Schnur, Comptroller, addresses the student city after the official swearing in. Bob Drone, Chief of police also gave an eloquent address.



SEASONAL

Initation - Mater Dei's Last!



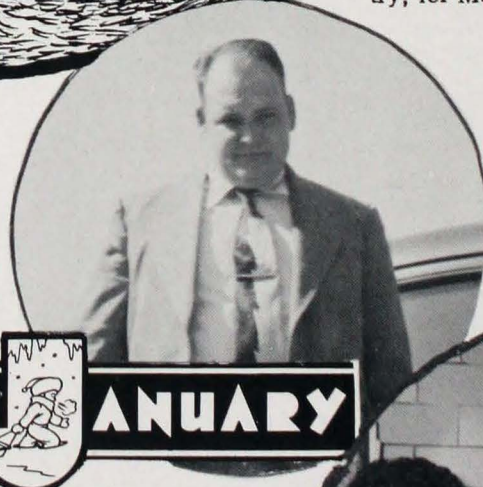
SEPTEMBER



The Prize Float - "We finally got first". Mona Jean Barron, Festival Queen posed as the Madonna, Betty Kercher, as Statue of Liberty, and a group (not on picture) Represented the school - For God, for Country, for Mater Dei.



OCTOBER



JANUARY

Mr. William Graves, joined the faculty second semester, teaching classes, regularly taught by Mr. Ellert.

Parents - go - to-School Night was lots of fun.



NOVEMBER

ACTIVITIES



FEBRUARY



(above) Mother Daughter Luceon Party, given by the Homemaking Club, was a very successful affair.
 (right) The Library Club helped sponsor Catholic Book Week.

The St. Thomas Day Breakfast, a Gala Affair, with Bassemier as toastmaster.

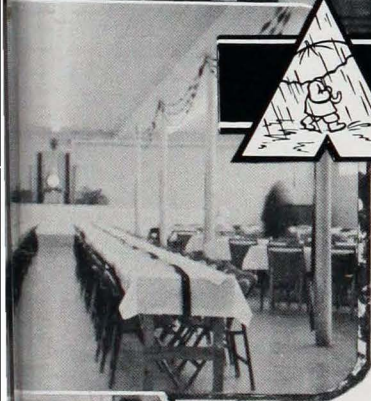


MARCH



APRIL

The Booster Club Officers (above) joined with the P. T.A. leaders (below) to sponsor the Achievement Banquet.



MAY

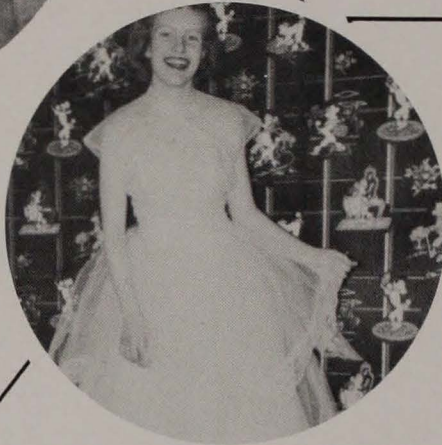


The May Crowning - one of the prettiest events of the year. Rosie Fehrenbacher, the '52 May Queen is shown here; The '53 May Queen was . . .

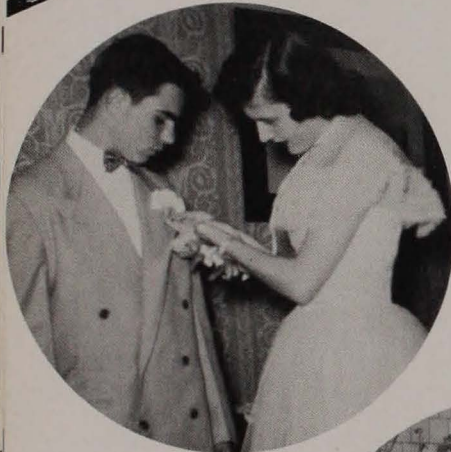
DANCES



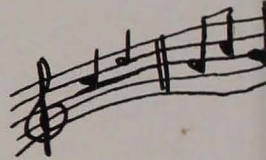
Complete with dimples



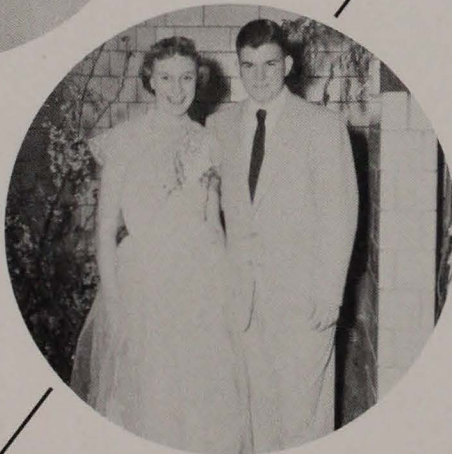
"Bonnie's the girl, and bonnie's the dress"



Before the Prom



Daisies won't tell, so men can talk



At the Prom

After the Prom



PARTIES

"Frosty" was the host for Mater Dei's Mid-Winter Frolic.



Another Holiday dance found some of Mater Dei's "big wheels" spinning.

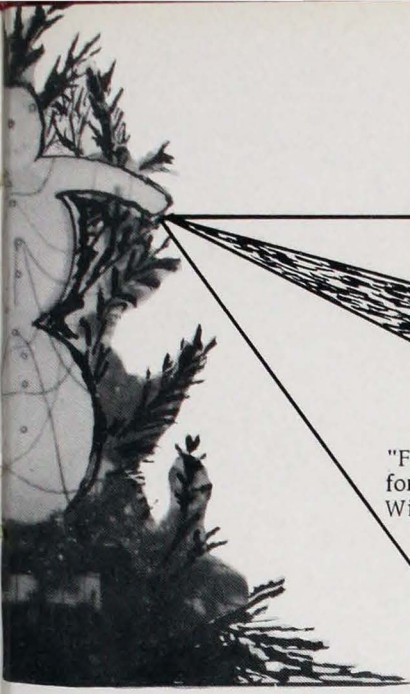
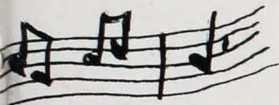


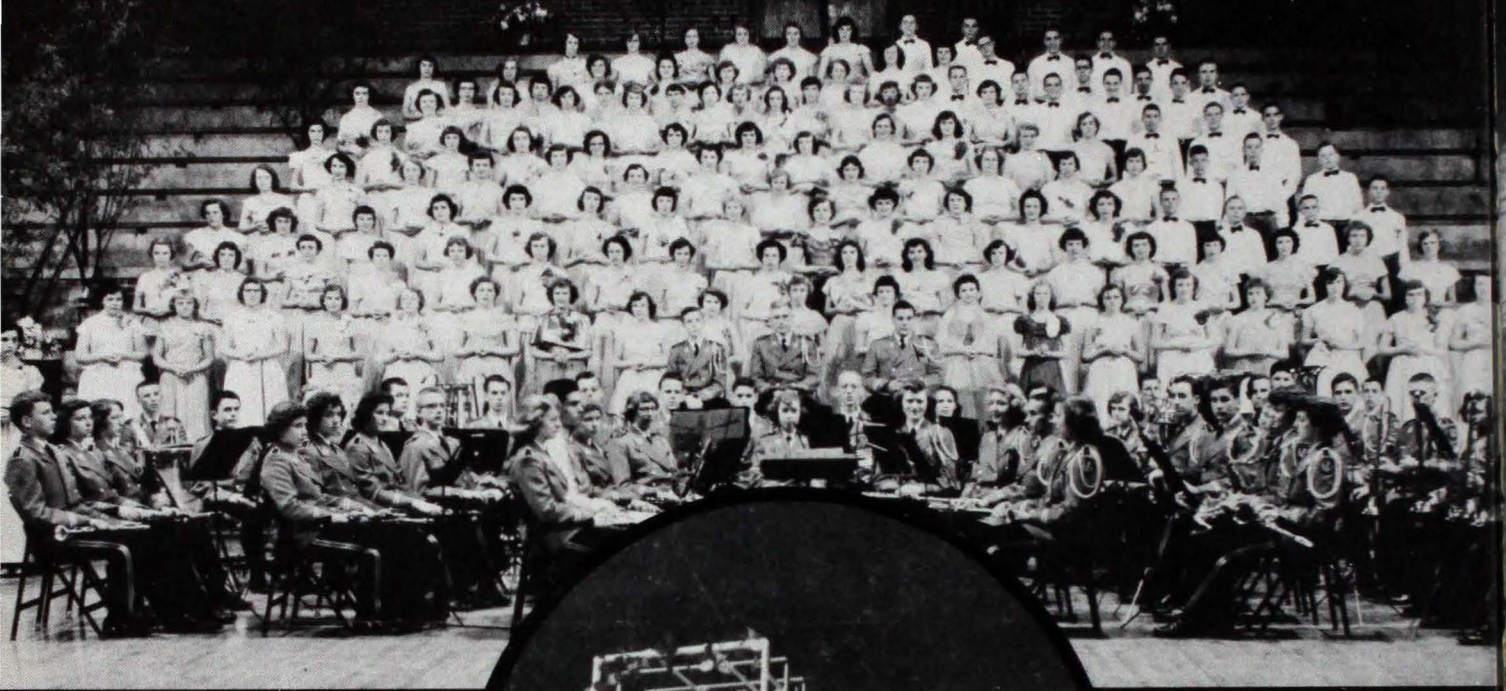
Was this at the dance called "Chick -a-loo"?

What is Jackie saying to Johnnie?

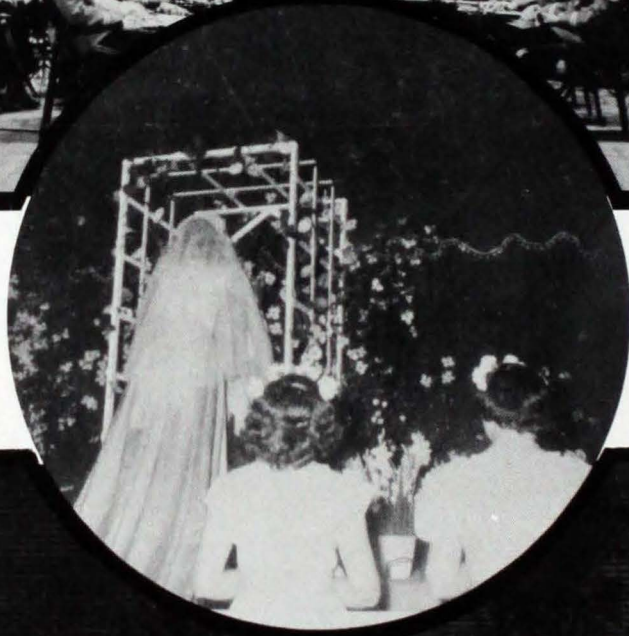


Remember The Sock Hops? Mrs. Patry brought the idea to M. D.





SPRING
CONCERT



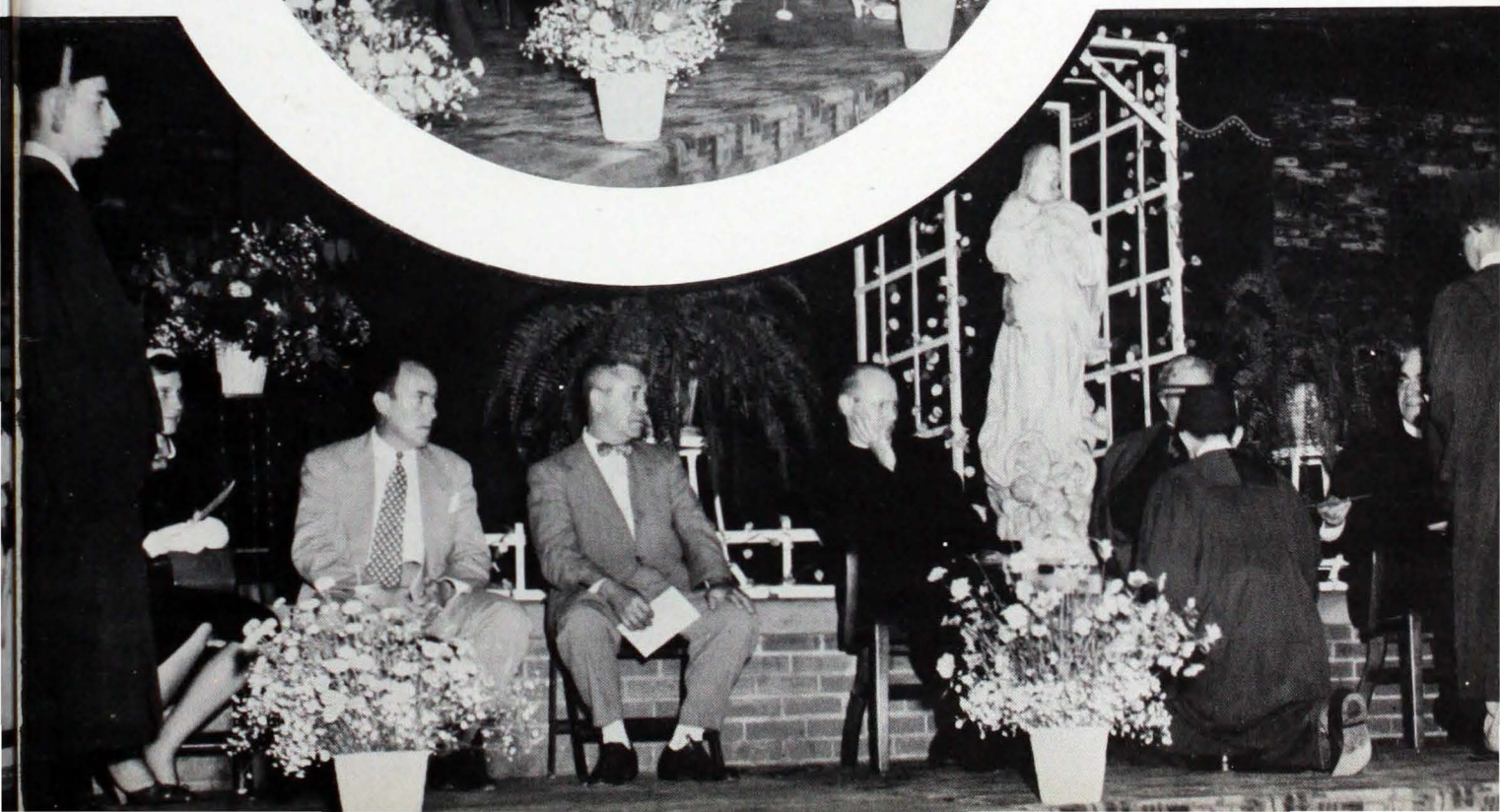
MAY DAY





'52

GRADUATION





H. Herman

Fine Candies Since 1860
Sodas - Sundaes - Sandwiches

123 Main St.

Phone No. 3-1186

Compliments of

DIETCH'S PAINTS
(DuPont)

2013 West Franklin Street
Evansville, Indiana

Compliments of

SERVICE TRANSFER COMPANY

540 Keck Avenue
Evansville, Indiana


LOCAL & LONG DISTANCE MOVING

Phone 2-5047

The Lindenschmidt Co
EST. 1882 IRON WORKS INC. 1908

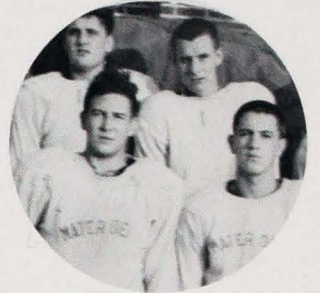
FRONT END ALIGNING
WHEEL BALANCING

Ingle & Market Sts.

<p>Best Wishes Kaylor's Shoe Store 1344 Division at Willow Rd. Your Headquarters for Weather-Bird Golly-Wogs</p>	<p>Miller & Miller Funeral Home 219 E. Franklin Street Evansville, Indiana</p>
<p>Congratulations from the <i>Joan Shop</i> "between Main & Sycamore" Evansville, Indiana 23 N.W. Fourth St.</p>	<p>BEST WISHES CLASS OF '51  Hats, Furnishings, and Clothing</p>
<p>Compliments of ALVA'S MEN'S WEAR AND SHOES 2115 W. Franklin St.</p>	<p>Res. Phone 5-8838 Bus. Phone 4-4734 Agent for Greyvan Lines, Inc. BALLARD TRANSFER COMPANY Local and Long Distance Moving Packing - Storage</p>
<p>Seiler's Market Fresh Fruits & Vegetables Quality Meats 2227 W. Franklin Phone 2-3716</p>	<p>BENTHALL GARAGE CO. 3510 BROADWAY PHONE 4-8850 EVANSVILLE, INDIANA</p>
<p>Compliments Alpine House New Harmony Way</p>	<p>A. J. Koressel 2209 W. Franklin Street Evansville, Indiana Phone 2-2901</p>
<p>KORMELINK'S STANDARD SERVICE STATION St. Joseph at Maryland St. Phone 2-0700 Evansville, Indiana</p>	<p>ZUBERS RADIO SERVICE Motorola Appliances Sales and Service Television Phone 2-6406 1916 W. Franklin St. Evansville 12, Ind.</p>
<p>Compliments of Robert (Bob) Kollker County Assessor</p>	<p>  HALLENBERGER, Inc. SPECIALISTS IN CUSTOM-BUILT BODIES & TRUCK BODY REPAIRS 2730 MT. VERNON AVE. EVANSVILLE 12, INDIANA</p>
<p>Compliments of American Cleaners & Dyers 9 East Tennessee</p>	<p>Moutous Auto and Machine Co. Your G. E. Dealer 1930 W. Franklin St. at Wabash Ave.</p>



Over the limit



Saturday's heroes



Why so sad?



Mr. Band

Watch it, Toelle





In my merry oldsmobile



Gruesome twosome



Junior Party



Music maestro



Which one is the dog

<p>Broadway Market Fancy Foods 3118 Broadway Street Phone 2-4685</p>	<p><i>Congratulations Seniors</i></p> <p>Muehlbauer Restaurant</p> <p>2101 W. Pennsylvania St.</p>
<p><i>Compliments</i></p> <p>Craig Radio Sales & Service Motorola TV - Emerson TV 2117 W. Franklin St.</p>	<p><i>Compliments</i></p> <p>Dr. S. F. Groves Dr. A. F. Brown Dentists 200 N. St. Joseph Ave.</p>
<p><i>Congratulations to the</i> <i>Class of '53</i></p> <p>KLEIN'S 2205 W. Franklin Street Phone 3-9608</p>	<p>WEINGARTEN'S <i>Evansville's Oldest Furrier</i></p> <p>212 MAIN ST.</p>
<p>Golfmore Drive-In</p> <p>1001 N. St. Joseph Ave. Evansville Indiana</p>	<p>HUMPERT'S</p> <p>Lunches Groceries Service Station Phone St. Philips Exchange St. Phillips Indiana</p>
<p>Evansville Auto & Home Supply <i>gifts - novelties - hardware - paint</i> 2201 N. Heidelberg Ave. Evansville Indiana Phone 3-7589</p>	<p><i>Compliments</i></p> <p>Pete's Place 12 S.E. 3rd</p>
<p>A. J. BRUNE CO. Crosley Sales and Service Since 1925 1922 W. Franklin St. Phone 4-7077</p>	<p><i>Compliments</i></p> <p>UNIQUE CLEANERS Dial 4-9204 2110 W. Franklin</p>

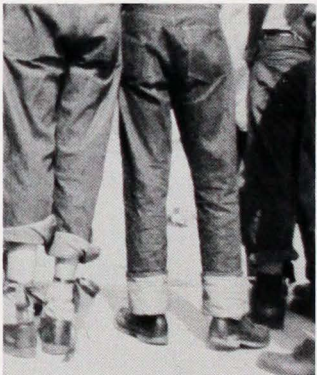
<p>Strouse & Bros.</p> <p>203 Main</p>	<p><i>Compliments of</i></p> <p>Boots Market</p>
<p>Schultze Lumber Company</p>	<p>Stanley Clothing</p> <p>111-115 Main</p> <p>Phone 55353</p>
<p>K. & W. Shell Station</p> <p>Corner Fulton at Franklin</p> <p>Phone 20854</p>	<p>Bud Bays</p> <p>Motorcycle Headquarters & Home of the Indian 3 Speed Bicycle</p> <p>1420 W. Franklin Phone 38304</p>
<p>A B C Radio Television</p> <p>2212 W. Franklin</p>	<p>Stock's Food Market</p> <p>2217 W. Penn. St.</p> <p>Phone 48171</p>



Will & Will



The phone is not to eat



The end approaching



Get to work



Hurry up we're cold



Hail! Hail! the gang's all here



The thinkers

Let's show em how!



CONGRATULATIONS

TO

THE

CLASS

OF 1953

KNIGHTS OF COLUMBUS

Best Wishes

A FRIEND



Compliments of

THE BRIDAL SHOP

6 N.W. Second Street
Evansville, Indiana



J. Vogel & Sons

600 Market

Phone 3-5624

DOUBLE MEASURE

**DOUBLE
COLA**

DOUBLE PLEASURE

Compliments of

**IDEAL PURE
MILK CO.**

201 S. E. 8th Street

Phone 5-5212



Now read this



Yep that is pretty

**SWANSON-
NUNN**

**For your every
electrical need call**

8th and Oak

Phone 5-3321

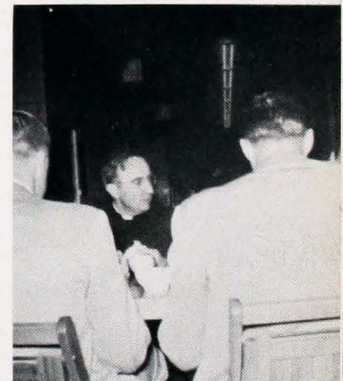
Congratulations

To

SENIORS

Will's Market

501 North Tekoppel



Between What

Just the girls





A-B-C-D Monkey



Long Long Ago?



Where'd that foot come from



Beautiful Dreamers

Compliments of

C. A. Frank
(Builder)



*"Quality Printing
Helpful Service"*

Moser Printing Co.

1110-1112 Main St. Phone 2-7362

**Altoff - Howard
Electric Co.**

**Electrical Contractors
Specializing in Power House
Industrial & Commercial
Electrical Wiring**

427 N.W. Fourth St. Phone 58886

First Ave. Lumber Co.

1723 - 1st Ave.
Phone 5-1200

Ed. Goebel, Owner

MALOTT DRUG STORE

Prescriptions & Cosmetics

2107 W. Franklin St.

*Congratulations
to the Senior Class of 1953*

Kissel Printers

2015 W. Franklin St.
Phone 2-6784

Compliments of

Huggin's Dry Cleaner

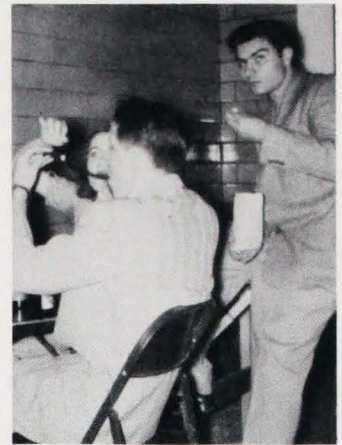
410 N. Tekoppel Ave.
123 N.W. 5th St.

Compliments of

Finke Furniture Co.

"37 steps from Main - on 7th."

<p><i>Compliments of</i></p> <p>Bitterman Bros.</p> <p>202 Main St.</p>	<p><i>Compliments of</i></p> <p>Bud's Self Serving Market</p> <p>Helfrich Avenue</p> <p>Evansville Indiana</p> <p>Phone 2-7729</p>
--	---



Down the Hatch

<p><i>Compliments of</i></p> <p>Stocker Insurance</p> <p>2333 W. Franklin St.</p>	<p><i>Compliments of</i></p> <p>Lerner's Department Store</p> <p>2303 Franklin Street</p> <p>Evansville Indiana</p> <p>Phone 2-7542</p>
--	--



Will you come to lunch

<p><i>Compliments of</i></p> <p>Key Motors</p> <p>121 S.E. Fifth</p> <p>Phone 58207</p>	<p><i>Compliments of</i></p> <p>Lloyd's Motor Sales</p> <p>of</p> <p>Evansville, Ind.</p> <p>2214-18 West Franklin St.</p>
--	---



Oh Happy Day

<p><i>Compliments of</i></p> <p>Sater's</p> <p>317-19 Main</p>	<p><i>Compliments of</i></p> <p>Bellman Jewelry and Gift Shop</p> <p>Phone 2-4341</p>
---	--



Double decker style



Going to get something to eat



What's in a locker?



Bookworm



Pretty boys

Say there girls



Congratulations Seniors

From

OHIO VALLEY HARDWARE & ROOFING CO.

300 4th Avenue

Phone 3-3131

Evansville, Indiana

Sears, Roebuck and Co.



101 N.W. 4th. Street

Phone 3-4431

*Around the Corner
from Anywhere*



DRINK
Coca-Cola 5¢
REG. U.S. PAT. OFF.

BOTTLED UNDER AUTHORITY OF THE COCA-COLA COMPANY BY
COCA-COLA BOTTLING WORKS OF EVANSVILLE, Inc.

Compliments

of

Salm's



Isn't that sweet?



Give it a pill Maybe it'll go away



Son Buck Wow!



Must be funny

My Hero





Buddies



Urb & Jim



Superman



Where have you been?

When you're interested in a
LAYETTE -
(or a baby gift)
visit

THE BABY SHOP

404 Main Street

Phone 3-0392

HILLSIDE FLOWERS

Cut Flowers - Corsages -

Potted Plants

2413 W. Franklin Street
Evansville 12, Indiana

**SHETLER MOVING & STORAGE
CO.**

*"Across the Street, or
Across The Nation"*

1311 First Ave. Phone: 5-2609

**U. S. SHEET METAL &
ROOFING CO., INC.**

1701 First Avenue Phone 5-2428



Evansville, Ind.

Phone No. 5-5779

GRUSINS DEPT. STORE

The Place To Trade

Corner Main & Iowa Sts.

Open evenings Fridays & Saturdays
until 8:30

No Parking Problems

Congratulations

Topper's Standard Service

Evansville Indiana

Phone 3-0712

Bill's Auto Stores

2122 W. Franklin Street

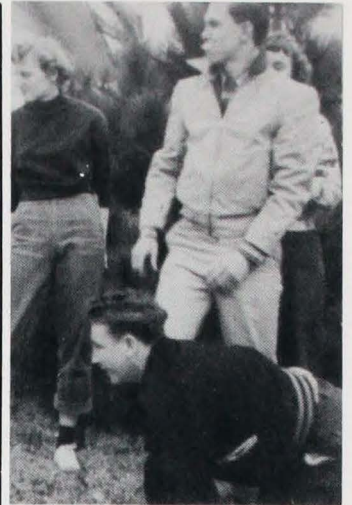
Evansville Indiana

Congratulations Seniors
KLEITZ FLOWERS, INC.
 "Flowers for all occasions"

721 Main Phone 2-1164

JOSEPH B. GOEBEL
 Water Wells, Pumps,
 Plumbing and Electrical Appliances

Rural Route 2
 St. Philips Exchange



Let us see, too!

REITZ DRUG STORE

*Your Rexall Druggist
 in The West Side*

12th Ave. Franklin

Prescription Specialist.
 3 Registered Pharmacists

Compliments of

Chris Droll

**INTERSTATE FINANCE CO.,
 INC.**

2126 W. Franklin St. Phone 3-1195

The Friendly Interstate Man



Mmmmm Good

Schultze
LUMBER COMPANY INC.

Kruckemeyer and Cohn

Jewelers for over half a century

321 Main Street



Don't let her scare you



Fourth at Locust

COMPLETE MEN'S & BOYS' WEAR

**BETTER PAINTS
 FOR
 HOME AND INDUSTRY**

RED SPOT
 PAINT AND VARNISH CO.
 EVANSTON, ILL. 110-14 MAIN ST.



Oh You Wouldn't!



Jolly Juniors



How can you be so cruel?



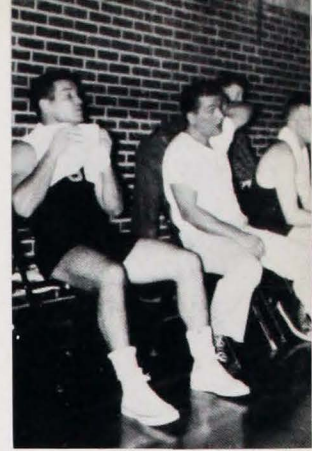
What a Change

Is it good?



<p>Compliments of Evansville Lumber Co.</p>	<p>Compliments Clem J. Tepool Prescription Druggist 2023 W. Franklin Street Evansville, Ind. Phone 2-4566</p>
<p>Compliments of The Furniture Mart 20 S.E. Third St.</p>	<p>DeGroot's Standard Service 2905 Broadway Phone 20045</p>
<p>The Hunters Co. Venetian Blind Laundry Blinds and Metal Awnings Re-Finishing - Re-Taping - Recording 307 N. Main St. Phone 4-7484</p>	<p>Compliments of Franklin Pastry Shop 2325 West Franklin St.</p>
<p>Compliments of Shell Oil Co.</p>	<p>Barthel's Hillside Grocery Fresh Meats - Vegetables Ice Cream 2531 Pennsylvania St. We Deliver</p>

<p>Frank A. Goebel Groceries and Meats 3414 Mt. Vernon Avenue</p>	<p>Compliments Wm. (Bill) Sexton Cleaners 208 S.E. 4th</p>
<p>Schulz's Clothing Ladies & Children's Wear 2203 W. Franklin St.</p>	<p>Compliments Drucker's 224 Main St.</p>
<p>Eagle Pharmacy Prescriptions - Free Delivery 1201 First Ave. Phone 2-4343</p>	<p>Howell Variety Store Complete Line of Red Spot Paint General Merchandise</p>
<p>Compliments of Grusin's Department Store Cor. Main & Iowa Sts. Open Evenings, Friday and Saturday until 8:30</p>	<p>Bachman Buick, Your Friendly Buick Dealer Opposite the Court House in Evansville</p>
<p>Flowers for all occasions Zeidlers Floral Company 2019 North Fulton</p>	<p>Marx Food Market Phone 2-0405 We Deliver Groceries, Meats, Vegetables</p>
<p>Congratulations to Class of 53 Dr. Clarence Smith Dentist</p>	<p>Acme Gas, Inc. 1179 Diamond Ave. Phone 5-2607 Bottle Gas Gas Appliances Hot - Clean - Safe</p>
<p>Willard's Marathan Station 3100 Broadway Avenue Evansville, Indiana</p>	<p>Flowers by Tolliver 13 Main St.</p>
<p>Compliments Belcher Barber Shop 1609 Helfrich Avenue</p>	<p>Your Auto Glass Specialist Art's Glass Service, Inc. 426 Carpenter St.</p>



Best Faculty team in town



How Expressive!



Healthy Line-up

Cute Freshies!



Compliments of

CORAL INN



What are you waiting
for, girls?

Compliments of

THE CRYSTAL PEARL PRODUCTS CO.



Casey at the bat

Evansville

Indiana



Contented

S. L. STIEBEL CO.
incorporated

**Exclusive Distributors of Seeburg Music Systems and
Scientific Sound Distribution**

105 N.W. Sixth Street

Evansville, 8, Indiana



Don't watch your feet,
Kerch.

EVANSVILLE GRAIN COOPERATIVE

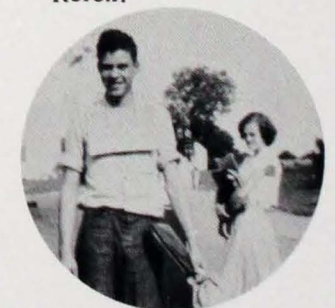
division of

Indiana Farm Bureau Cooperative Ass'n, Inc.

Evansville, Indiana
Station B

2400 Broadway, Zone 12

Phone 3-6756

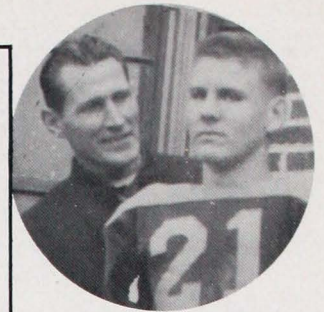


Pretty Boy

Compliments of

BERNARDIN BOTTLE CAP COMPANY

Evansville, Indiana



Deer Coach

Compliments of

G. A. Beard & Son



My Hero

Compliments of

Franklin Shoe Co.

Weatherbird City Club - Velvet Step Shoes

2322 W. Franklin St.

Ed. Shellenberger



Hold em tight

Eliter's

1030 Harmony Way

Complete Fountain Service

Sandwiches - Medicines - Sundries

Jumbo Malts - Banana Splits

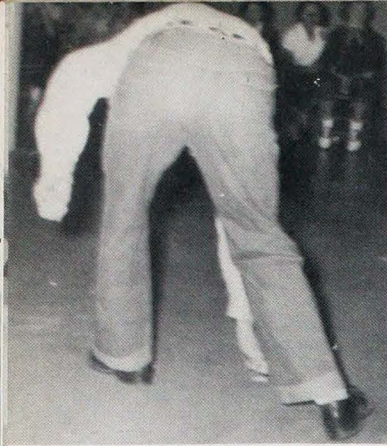
Phone 5-6707



Miss Liberty

Open Your eyes Monna





This is the beginning of the end



One of Mater Dei's big men



Green Freshes

And the band played on



YES BUSINESS PAYS WELL

A few months of intensive training after High School will prepare you for one of the better office jobs.

LOCKYEAR'S BUSINESS COLLEGE

Evansville, Indiana

Compliments of

BOETTICHER & KELLOGG CO. INC.

Evansville

Indiana

Telephone 3-1121

Compliments of

CHARLES LEICH & CO.

Wholesalers Since 1854

WARWEG AND HAGEL

306 Grein Bldg.

Evansville, Indiana

Phone 5-2935

TEKOPPEL BLOCK COMPANY

Makers of Concrete Building Blocks

Also Dealers in Portland Cement,

Lime, Plaster, Sewer Pipe, and

Waterproofing Material

Dial 2-2491 531 N. St. Joseph Avenue

COMPLIMENTS OF
PURITY DAIRY CO.

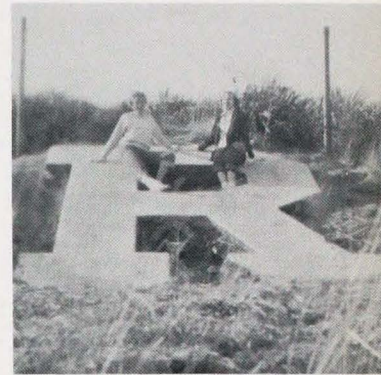
EVANSVILLE, INDIANA

MILK

ICE CREAM



Where did you pick him up?



Resting place?



Too tired to get up

Ruby now has three hands





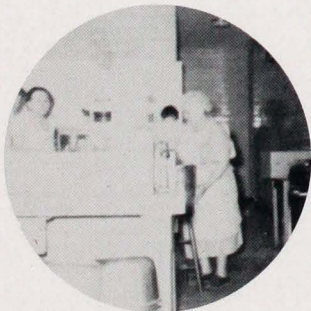
Slaving away?



Who's that Peeping through?



You Watch It. Hoff.



They Cook It
We Eat It

Laughing boy



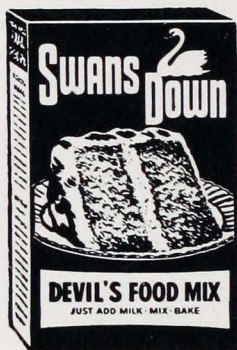
CONGRATULATIONS

From

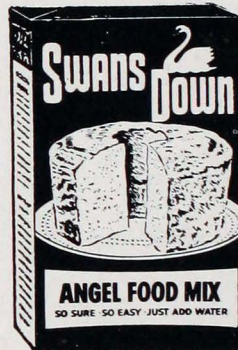
SWANS DOWN

THE FAMOUS NAME FOR HOME BAKING

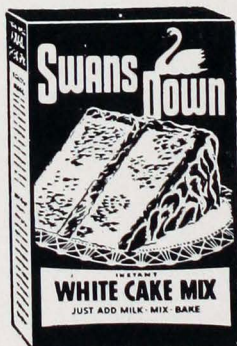
SWANS DOWN
DEVIL'S FOOD MIX



SWANS DOWN
ANGEL FOOD MIX



SWANS DOWN INSTANT
WHITE CAKE MIX



SWANS DOWN
CAKE FLOUR



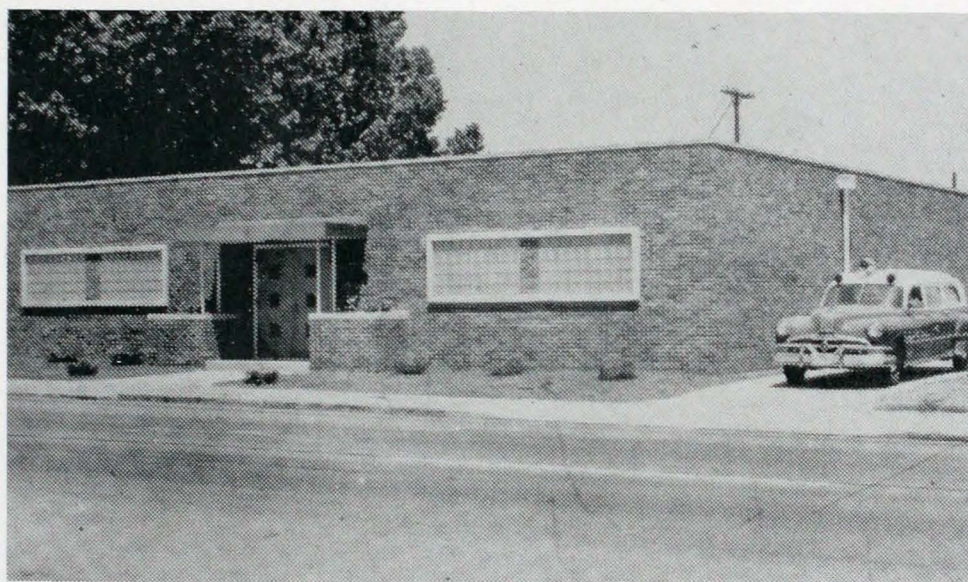
IGLEHEART BROTHERS DIVISION

Established 1856

GENERAL FOODS CORPORATION

CONGRATULATIONS
TO THE CLASS OF 1953
SCHENK & PIERRE

Funeral Home



24 Hour Ambulance Service

2601 West Franklin Street Phone 3-6471



First Senior Round-up



Mr. & Mrs. Chemistry



What's wrong, Schenk?



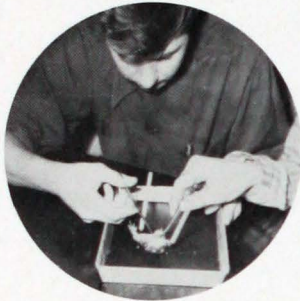
Hear ye! Hear ye!

What'cha Lookin' at, Irene?





Working?



Preparing Dinner



Where's Pete, Joan?



Glaser and Baehl at it again.

Little Elf



CLEM A. WEISS GARAGE

General Repair – Brakes Relined



Upper Mt. Vernon Road

Telephone: 3-8011

A. J. HORMUTH FURNITURE CO.

Furniture – Lamps – Appliances
Television – Floor Coverings

A. J. Hormuth
Creal Stout

Al Vote
Velma Rhoads

Bob Hormuth
Dorothy Jamison

1252-54 Division St.
Evansville, 14, Indiana

WEBER EQUIPMENT COMPANY

Phone: 3-3050

714 N. W. 2nd

THE KOKIES INC.

Phone 3-7606
2911 W. Maryland St.
Evansville 12, Indiana

Open to the Public

Saturday Evenings 4 to 9 p.m



*Catering to: Wedding Parties – Banquets
Dinner Meetings – Private Parties*

SCHMITT PHOTO SERVICE

Eastman
and
Ansco Cameras
films
and
supplies

516 West Franklin
Evansville, 10, Indiana

Film developing,
printing,
and
enlarging

Geo. W. Schmitt

Geo. J. Schmitt

Complete line of color film: Movie and Still



Buddies?



Get that hair out of your eyes,
Kerch!



That's fattening, Sylvia.



Watch'a you got Charlie?

Big mouth Hagel.



Compliments of

MULLEN CRAFTS

2304 Ohio Street

WEINZAPFEL & SONS

Mt. Vernon, Ind. R.R. 2 - St. Phillips, Ind.

*Dealer In,
Coal, Feed, Fertilizer
Trucking Services*

ALEXANDER FUNERAL HOME

2100 W. Illinois Street



Did you find it?



The Lineup



Two Lonesome Seniors

Showing off as usual



Compliments of

NURRENBERN FURNITURE CO.

Household Furnishings

2109 W. Franklin Street

Phone 2-4478

Evenings by appointment

FRANK C. SCHULER

Roofing And Sheet Metal Contractor

Roofing of all kinds – Brick Siding – Furnaces and
Furnace Repairs

Guttering and Window Glass

2233 W. Franklin St.

Phone: 2-1421

Free Estimates

EVANSVILLE SHEET METAL WORKS INC.

1923 West Franklin Street

Phone: 3-6444

Heating – Air-Conditioning

Residential – Commercial

OLLIE H. HARTMANN

Contractor

Stone, Brick, Block, and Concrete

Estimates Cheerfully Given

Phone: St. Phillip's Exchange

R.R. 2, Mt. Vernon, Ind.

**AUTO
BURGLARY
TORNADO**

**COMPENSATION
PUBLIC LIABILITY
FIRE**

WILL & WILL
General Insurance

2314 W. Franklin St.

Phone 2-2544

Smith & Butterfield

315 Main Street

Evansville, Indiana

Miller's 5-1.00 Store

2315-17 W. Franklin Street

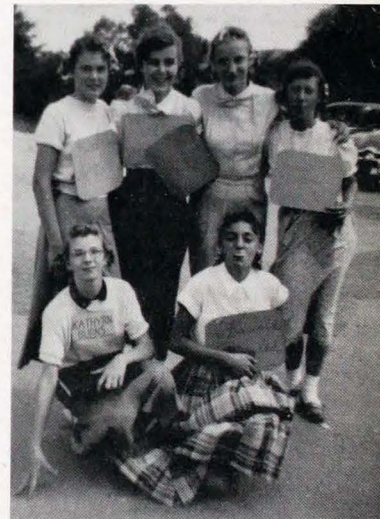
Compliments of
College Corner



Nature Girls



You got to play GUTS Football



Them was the days

It happened on Reitz Hill





On To Torture



All "Catted" up



W. for winner

Gerry's little girl



Compliments of

Joseph Schaefer & Sons,

Phone 3-5431

311-315 N. W. 5th St.

Evansville 10, Ind.

In Evansville It's the

HOTEL VENDOME

Here indeed the discriminating guest will find
The Epitome of Modern Luxury Living

The New Town Room for Delicious Meals

Luncheons - Dinners
Dancing Nightly

Popularly Priced
The Bourbon Dining Room

Congratulations Seniors

INTERNATIONAL STEEL COMPANY

1321 Edgar Street, Evansville 7, Indiana

Phone 5-3311

Telephone 5-8135

Mobile Ambulance Service

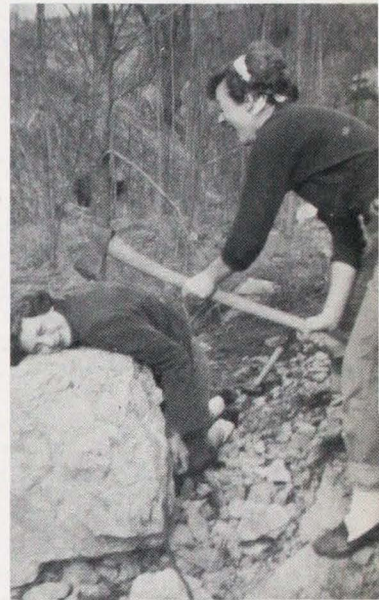
ZIEMER FUNERAL HOME

First
Avenue
and
Delaware
Street

Evansville, Indiana



Found on Rietz Hill
Please Claim



Off With Her head



Will's in on everything

Glamour Gals



*W*hen

you want a photograph . . .
you want a *fine* photograph

and that's the only kind
your official photographer takes!

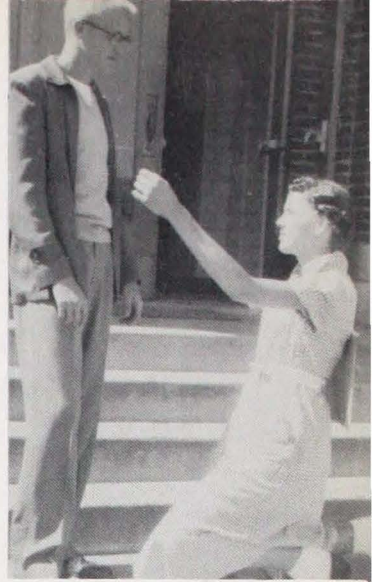
Scheer's

Fourth at Locust

CRAWFORD
GARAGE DOORS

421 Fulton Avenue

Phone 3-6192



Hail mighty Senior



Lone Wolf

First Page Editor





Pretty Chaprones



Who's No. 12



Shine em bright



M.D.'s exciting game?

Is it interesting?



Compliments of

George Busch Service Station

Harmony Way & Wimberg Avenue

Evansville, Indiana



**for
Tops in Flavor
and Freshness**

THE EXCLUSIVE HONEY BREAD

Compliments of

HI CLASS BAKING CO.

1329 Division Street

Compliments of

DETERMAN'S

104 Main Street

Compliments of

LAMASCO BANK

The Bank of Friendly Service

220 N. Fulton Ave.
Evansville, Indiana
Phone 4-5495

Compliments of

Professional Laundries

Evansville's

Atles Laundry & Cleaning Co.
Best Launderers & Cleaners, Inc.
Krauss Cleaners - Launderers
Pearl Steam Laundry & Dry Cleaners
Peerless Laundry & Cleaning Corp.
White Swan Laundry & Cleaners

Bernard G. Schenk Agency

Fire - Auto - Health - Life

Insurance and Real Estate

3002 Broadway
Phones - Office 5-3161 - Res. 5-6321



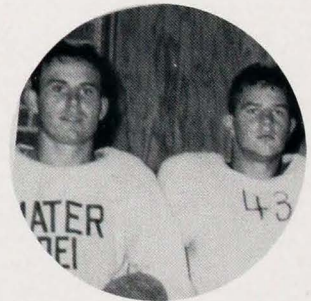
Sour Juice?



Mr. Microphone

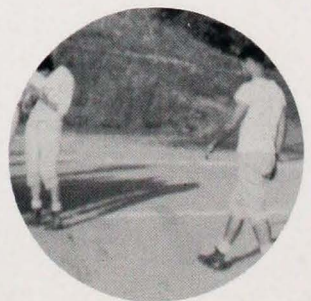


What's wrong Coach?



Muscle Boys'

Hm! What a physique!





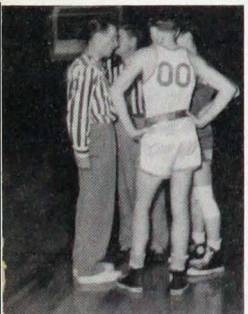
After the Memorial game



They have to eat them

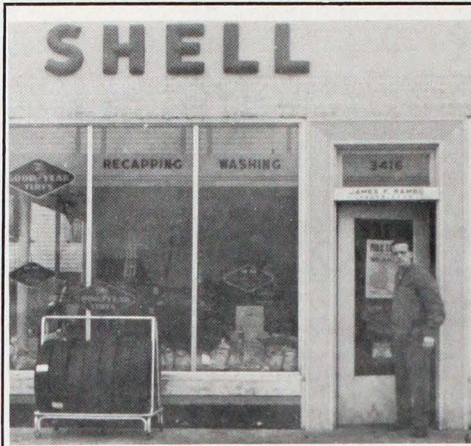


Now listen you wise guys



Talking things over

Little Miss Golf



**Rambo's
Shell Station**

Corner, Tekoppel and Virginia
Phone 3-0695

Complete tune-up service

Compliments of

**Concrete Supply Company
Inc.**

2020 West Iowa Street

A FIVE-STAR RATING

- ★ Costly imported blend
- ★ Mello-rich flavor
- ★ Fragrant bouquet
- ★ Mild . . . yet satisfying
- ★ Easy drawing Air-Vent



Compliments of

H. FENDRICH, INC.

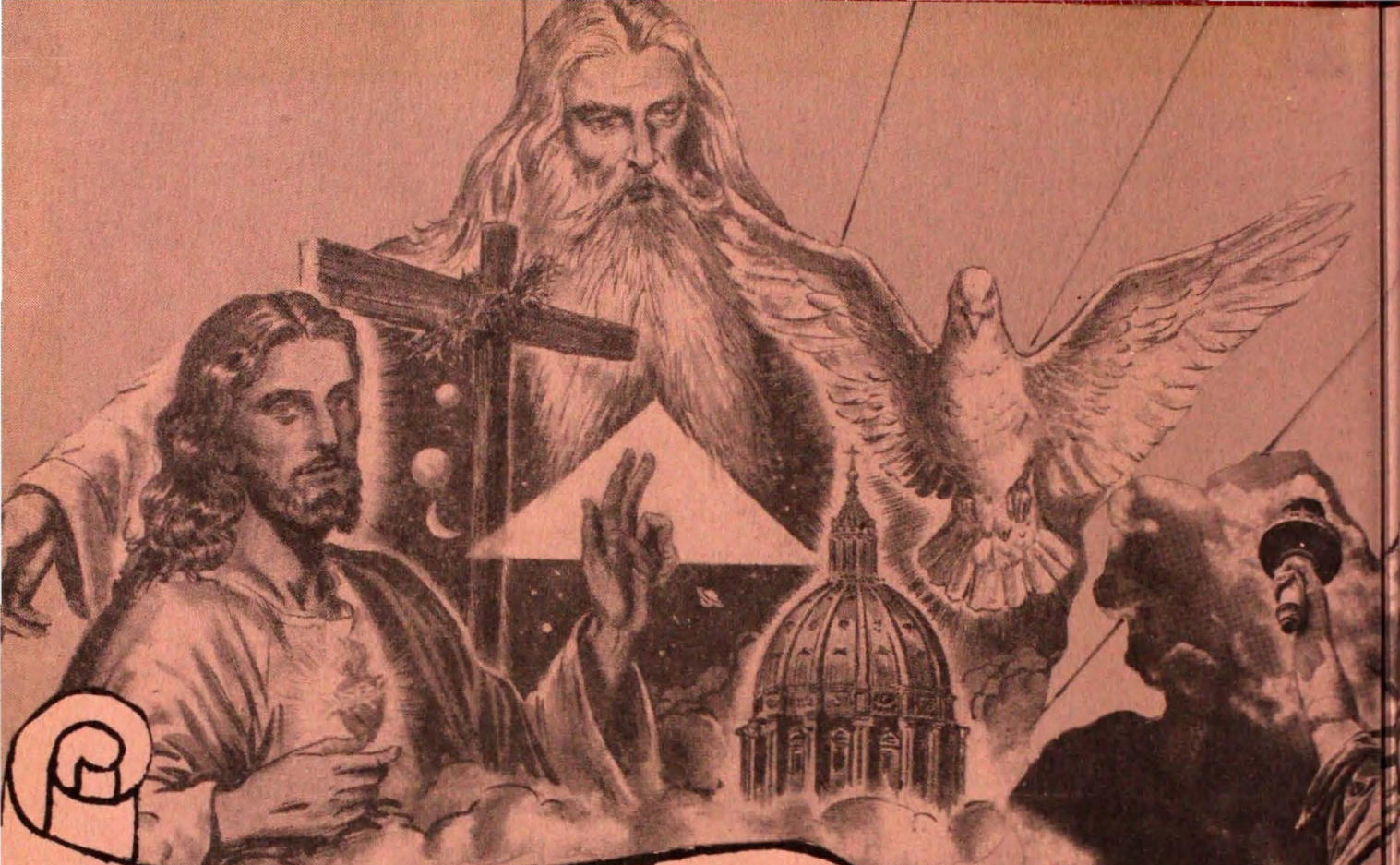
119 Locust Street
Phone 5-8600

Compliments of

Charles Leich & Company

Wholesalers Since 1854

M. R. LAHEE
1505 NEW GREEN RIVER RD.
EVANSVILLE, IND.



For GOD

For CO



HILLGHITES



COUNTRY



For

MATER DEI

